

QUANTITIES				
ITEMS	QUANTITIES ESTIMATED	AS-BUILT		
		QUANTITIES	TYPE	MANUFACTURER/SUPPLIER
8" Water	354 L.F.	350 L.F.	DIP CLASS 52	U.S. FILTER / ATLANTIC STATES
6" Water	50 L.F.	70 L.F.	" "	" "
4" Water	26 L.F.	22.3 L.F.	" "	" "
Fire Hydrant	1 Ea.	1 Ea.		U.S. FILTER / MUELLER
6" Sewer	10 L.F.	6 L.F.	SDR 35	U.S. FILTER / DIAMOND
8" Sewer	322 L.F.	319.67 L.F.	SDR 35	" "
4" Manhole	4 Ea.	4 Ea.	PRECAST	ATLANTIC STATES
8"x8" Tee	1 Ea.	1 Ea.	MS	U.S. FILTER / UNION
8"-1/8 B.	3 Ea.	4 Ea.	MS	" "
8"x4" Tee	1 Ea.	1 Ea.	MS	" "
8"x4" Reducer	2 Ea.	2 Ea.	MS	U.S. FILTER / UNION
4" Valve	3 Ea.	2 Ea.	GATE-OR	U.S. FILTER / MUELLER
8"x6" FHT TEE	1 Ea.	1 Ea.	MS	U.S. FILTER / Union
4" Cap	3 Ea.	2 Ea.	MS	" "
6" Valve	2 Ea.	2 Ea.	GATE-OR	" "
8"x6" TEE	1 Ea.	1 Ea.	MS	" "
8" VALVE	1 Ea.	1 Ea.	LATE-OR	" "

NAME OF UTILITY CONTRACTOR: HTI CONTRACTORS

SURVEY AND DRAFTING DIV. _____ CHECKBOX _____ AS-BUILT DATE _____

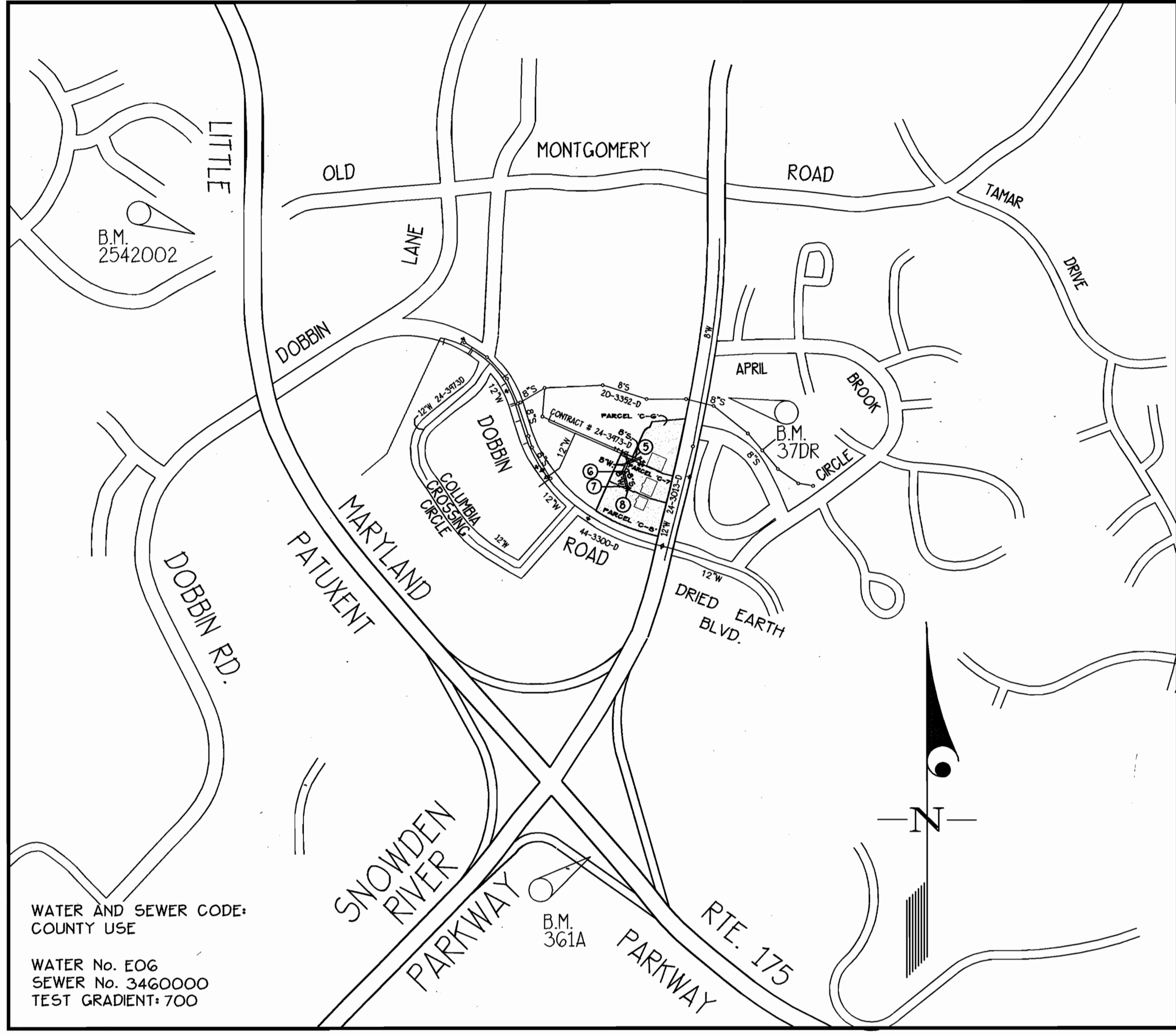
BENCH MARK DESCRIPTIONS

STATION 2542002 (Concrete Monument)
ELEV. = 363.638 For vertical control only.
Station is located 1000' +/- west of Rte. 175 on transmission line at G+E tower 19-E near Hanovers Restaurant entrance.

STATION 37DR (1/4" Rebar)
N 169881.1794, E 416566.7155 For horizontal control only.
Station is located 0.45' +/- miles north of Rte. 175 + 76' +/- east pf the east curb of Snowden River Parkway.

STATION 361A (Concrete Monument)
N 169205.9263, E 416313.5119 For horizontal control only.
Station is located at the southwest corner of the intersection of Snowden River Parkway and Rte. 175 3' +/- from curb and 5.7' +/- from end of guard rail.

TYPE OF BUILDING	Commercial
NUMBER OF UNITS	-3-
NUMBER OF S.H.C.'s	-3-
NUMBER OF W.H.C.'s	-3-
DRAINAGE AREA	DORSEY RUN
TREATMENT PLANT	LITTLE PATUXENT RECLAMATION PLANT



VICINITY MAP
SCALE: 1"=600'

CONTRACT No. 24-4035-D
ROUTE 175 COMMERCIAL
PARCELS 'C-6' THRU 'C-8'
SECTION 1 AREA 2
HOWARD COUNTY, MARYLAND
DEPARTMENT OF PUBLIC WORKS

- GENERAL NOTES**
- PART I
- Approximate locations of existing mains are shown. The contractor shall take all necessary precautions to protect existing mains and services and maintain uninterrupted service. Any damage incurred shall be repaired immediately to the satisfaction of the Engineer at the contractor's expense.
 - All horizontal controls are based on Maryland State Coordinates, NAD 83.
 - All vertical controls are based on NAVD 88.
 - All pipe elevations shown are invert elevations unless otherwise noted on the plans.
 - Clear all utilities by a minimum of 12". Clear all poles by 5'-0" minimum or tunnel as required unless otherwise noted. The owner has contacted the utility companies and has made arrangements for bracing of poles as shown on the drawings. In the event the contractor's work requires the bracing of additional poles, any cost incurred by the owner for the bracing of additional poles or damages shall be deducted from monies owed the contractor. The contractor shall coordinate with the utility companies to schedule the bracing of the poles.
 - For details not shown on the drawings, and for materials and construction methods use Howard County Design Manual, Volume IV, Standard Specifications and Details for Construction (Latest Edition). The contractor shall have a copy of Volume IV on the job.
 - Where test pits have been made on existing utilities, they are noted by the symbol (circle with cross) at the locations of the test pit. A note or notes containing the results of the test pit or pits is included on the drawings. Existing utilities in the vicinity of the proposed work for which test pits have not been dug shall be located by the contractor two weeks in advance of construction operations at his own expense.
 - The contractor shall notify the following utility companies or agencies at least (5) working days before starting work shown on these plans:
 - AT+T 1-800-252-1133
 - BGE (Contractor Services) 410-850-4620
 - BGE (Under Ground Damage Control) 410-787-9068
 - Bureau of Utilities 410-313-4900
 - Colonial Pipeline Co. 410-785-1390
 - Miss Utility 1-800-257-7777
 - State Highway Administration 410-531-5533
 - Verizon 1-800-743-0033/410-224-9210
 - Trees and shrubs are to be protected from damage to maximum extent. Trees and shrubs located within the construction strip are not to be removed or damaged by the contractor.
 - The contractor shall remove trees, stumps and roots along line of excavation. Payment for such removal shall be included in the unit price bid for construction of the main.
 - The contractor shall notify the Bureau of Highways, Howard County, at 410-313-7450 at least five (5) working days before any open cutting or boring/jacking of any County road for laying water/sewer mains or house connections. The approval of these will constitute compliance with DPW requirement per Section 18.114(c) of the Howard County Code.
- PART II - WATER
- All water mains shall be D.I.P. Class 52 unless otherwise noted.
 - Tops of all water mains shall have a minimum of 3'-6" cover unless otherwise noted.
 - Valves adjacent to tees shall be strapped to tees.
 - All fittings shall be buttressed or anchored with concrete in accordance with the Standard Details unless otherwise provided for on the drawings.
 - Fire hydrants shall be set to the bury line elevations shown on the drawings. All fire hydrants shall be installed in accordance with Standard Details. Soil around the fire hydrant shall be compacted in accordance with Section 1000 and 1005 of the Standard Specifications.
 - The contractor shall not operate any water main valves on the existing water system.
- PART III - SEWER
- All sewer mains shall be D.I.P. or P.V.C. unless otherwise noted.
 - All manholes shall be 4'-0" inside diameter unless otherwise noted.
 - Force mains shall be D.I.P. only.
 - Manholes shown with 12" and 16" walls are for brick manholes only.
 - Manholes designated W.T. in plan and profile shall have watertight frame and cover, Standard Detail G5.52. Where watertight manhole frames and covers are used, set top of frame 1'-6" above finished grade unless otherwise noted on the drawings.
 - House(s) with the symbol "C.N.S." indicates that the cellar cannot be served.

Sediment Control Measures will be implemented in accordance with Section 219 of the Specifications + with Site Plan SDP 01-04, Drawings For Sediment + Erosion Control.

REVIEWED FOR HOWARD SOIL CONSERVATION DISTRICT AND MEETS TECHNICAL REQUIREMENT.

Jim Meyer 7/3/02
SIGNATURE DATE
U.S.D.A. NATURAL RESOURCES CONSERVATION SERVICE

THIS DEVELOPMENT PLAN IS APPROVED FOR SOIL EROSION AND SEDIMENT CONTROL BY THE HOWARD SOIL CONSERVATION DISTRICT.

APPROVED:
John P. Robertson 7/3/02
HOWARD STAFF

DEPARTMENT OF PUBLIC WORKS
HOWARD COUNTY, MARYLAND

Robert B... 6-21-02
DATE
CHIEF, BUREAU OF UTILITIES

DEPARTMENT OF PLANNING AND ZONING
HOWARD COUNTY, MARYLAND

John D... 7/1/02
DATE
CHIEF, DEVELOPMENT ENGINEERING DIVISION

GLW GUTSCHICK LITTLE & WEBER, P.A.
CIVIL ENGINEERS, LAND SURVEYORS, LAND PLANNERS, LANDSCAPE ARCHITECTS
3909 NATIONAL DRIVE - SUITE 250 - BURTONSVILLE OFFICE PARK
BURTONSVILLE, MARYLAND 20866
TEL: 301-421-4024 BALT: 410-880-1820 DC/VA: 301-989-2524 FAX: 301-421-4186



DES: Wsj				
DRN: Wsj				
CHK: rot				
DATE: June 2002	KCI	1	AS-BUILT DATA ADDED	9/5/02
	BY	NO	REVISION	DATE

TITLE SHEET
SCALE: AS SHOWN

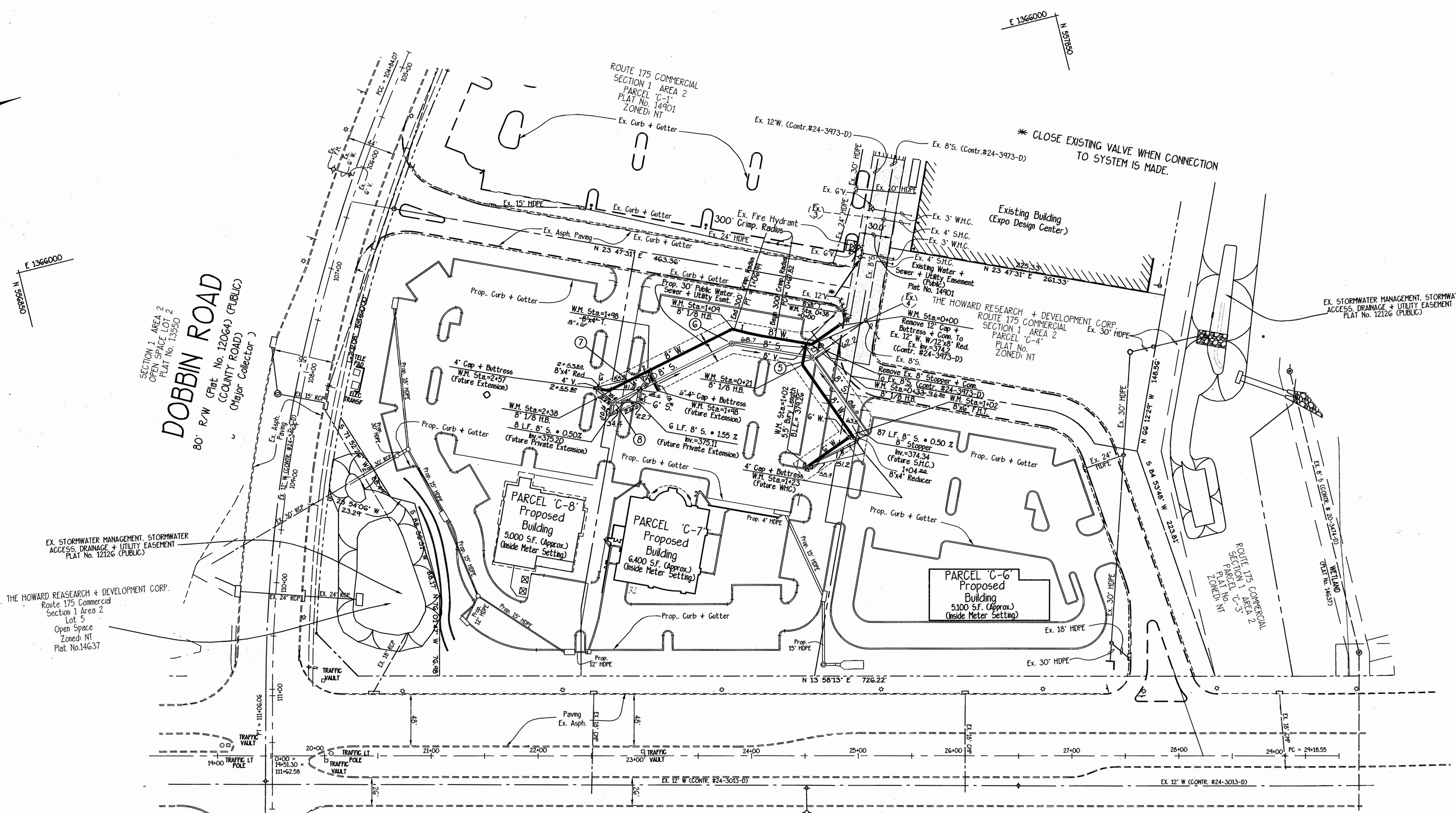
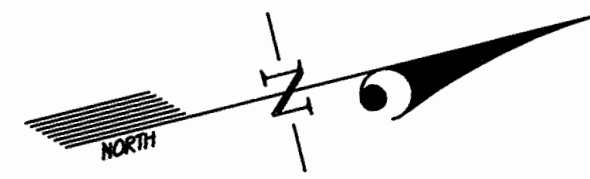
600' SCALE MAP NO. 36+37 BLOCK NO. 18+17 ELECTION DISTRICT No. 6

ROUTE 175 COMMERCIAL
PARCELS 'C-6' THRU 'C-8'
SECTION 1 AREA 2
CONTRACT No. 24-4035-D

SCALE AS SHOWN
SHEET 1 OF 3

HOWARD COUNTY, MARYLAND

GLW FILE No. 95003



SECTION 1, AREA 2
OPEN SPACE, LOT 2
FLAT No. 13550

DOBBIN ROAD
80' R/W (Flat No. 12064) (PUBLIC)
(COUNTY ROAD)
(Major Collector)

EX. STORMWATER MANAGEMENT, STORMWATER ACCESS, DRAINAGE + UTILITY EASEMENT
FLAT No. 12126 (PUBLIC)

THE HOWARD RESEARCH + DEVELOPMENT CORP.
Route 175 Commercial
Section 1 Area 2
Lot 5
Open Space
Zoned: NT
Flat No. 14637

DRIED EARTH BLVD.
VARIABLE WIDTH R/W (PLAT No. 11595)
(PUBLIC) (COUNTY ROAD)

SNOWDEN RIVER PARKWAY
(PUBLIC) (COUNTY ROAD)
150' PUBLIC R/W (PLAT No. 9611)

VILLAGE OF LONGREACH
SECTION 4 AREA 2
FLAT No. 11032

Plan Scale:
1"=50'

GLW FILE #95003
Water + Sewer Final

DEPARTMENT OF
PUBLIC WORKS
HOWARD COUNTY, MARYLAND

DEPARTMENT OF
PLANNING AND ZONING
HOWARD COUNTY, MARYLAND

GLWGUTSCHICK LITTLE & WEBER, P.A.
CIVIL ENGINEERS, LAND SURVEYORS, LAND PLANNERS, LANDSCAPE ARCHITECTS
3909 NATIONAL DRIVE - SUITE 250 - BURTONSVILLE OFFICE PARK
BURTONSVILLE, MARYLAND 20866
TEL: 301-421-4024 BAL: 410-880-1820 DC/VA: 301-989-2524 FAX: 301-421-4188



DES: WsJ					
DRN: WsJ					
CHK: ngt					
DATE: June 2002	BY: N/A	NO: 1	REVISION: ASBUILT DATUM ADDED TO PLAN	DATE: 9/5/02	

WATER and SEWER EXTENSION
PLAN

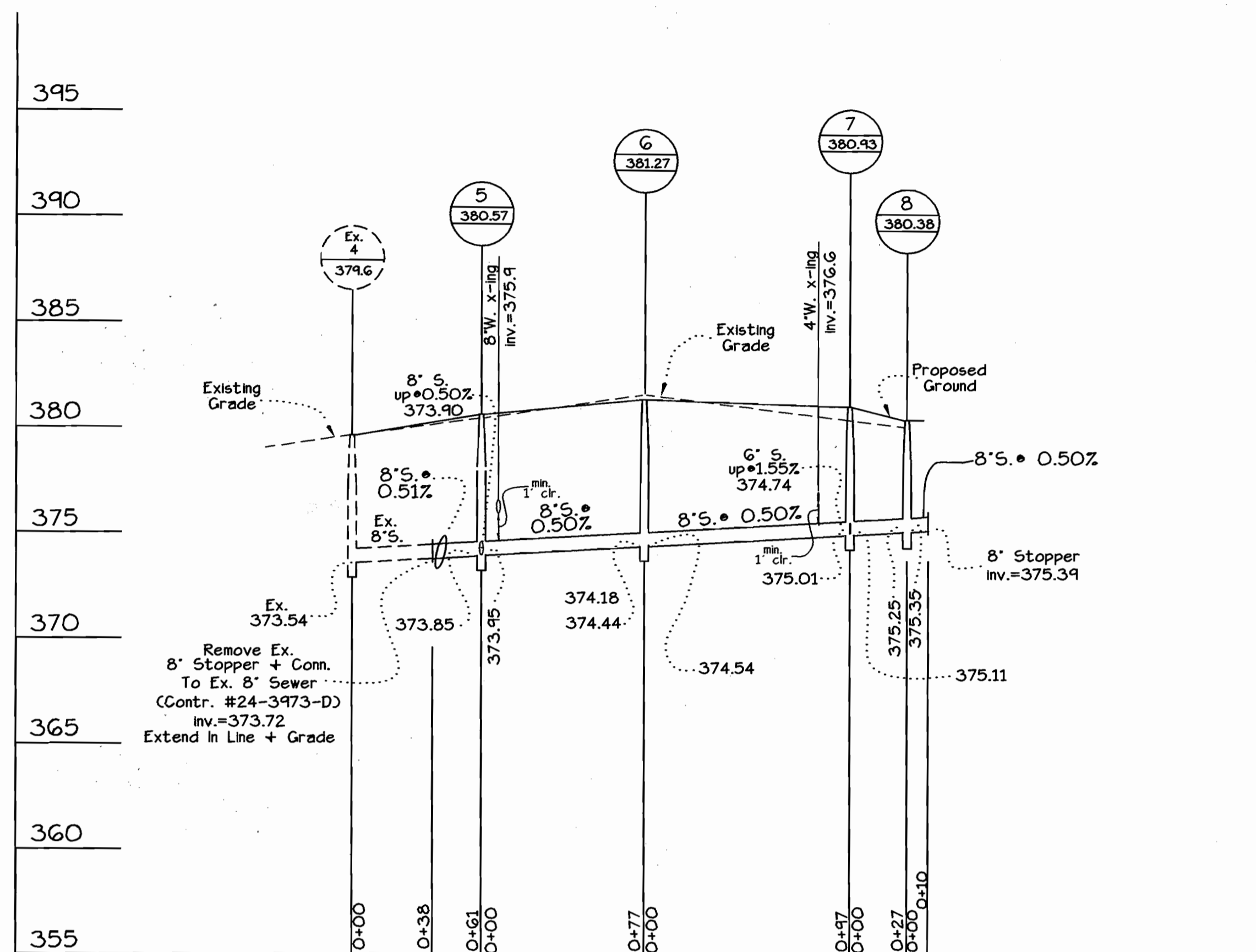
ROUTE 175 COMMERCIAL
PARCELS 'C-6' THRU 'C-8'
SECTION 1 AREA 2
CONTRACT No. 24-4035-D

SCALE
1"=50'
SHEET
2 OF 3

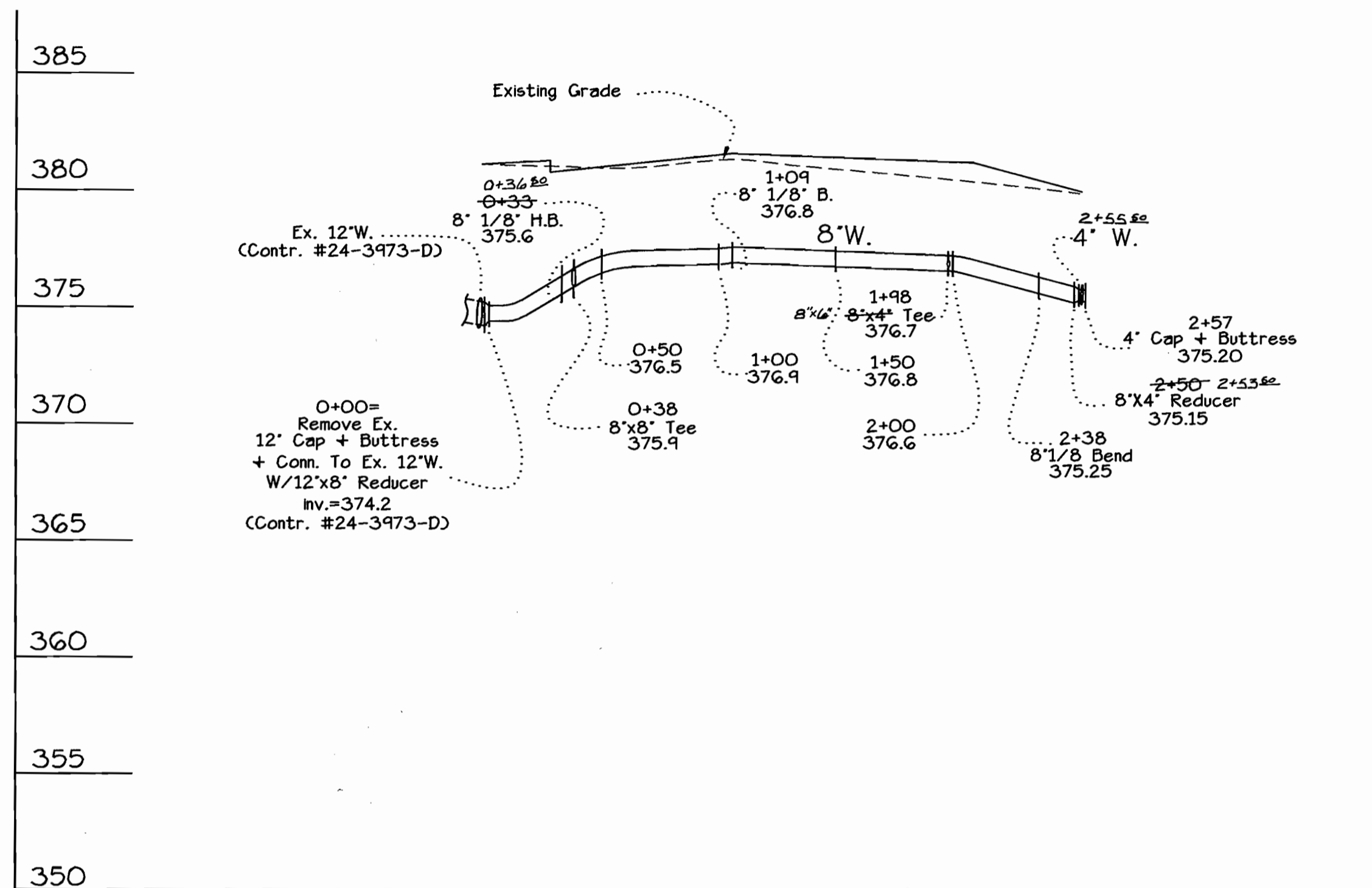
600' SCALE MAP No. 36+37 BLOCK No. 18+17

ELECTION DISTRICT No. 6

HOWARD COUNTY, MARYLAND

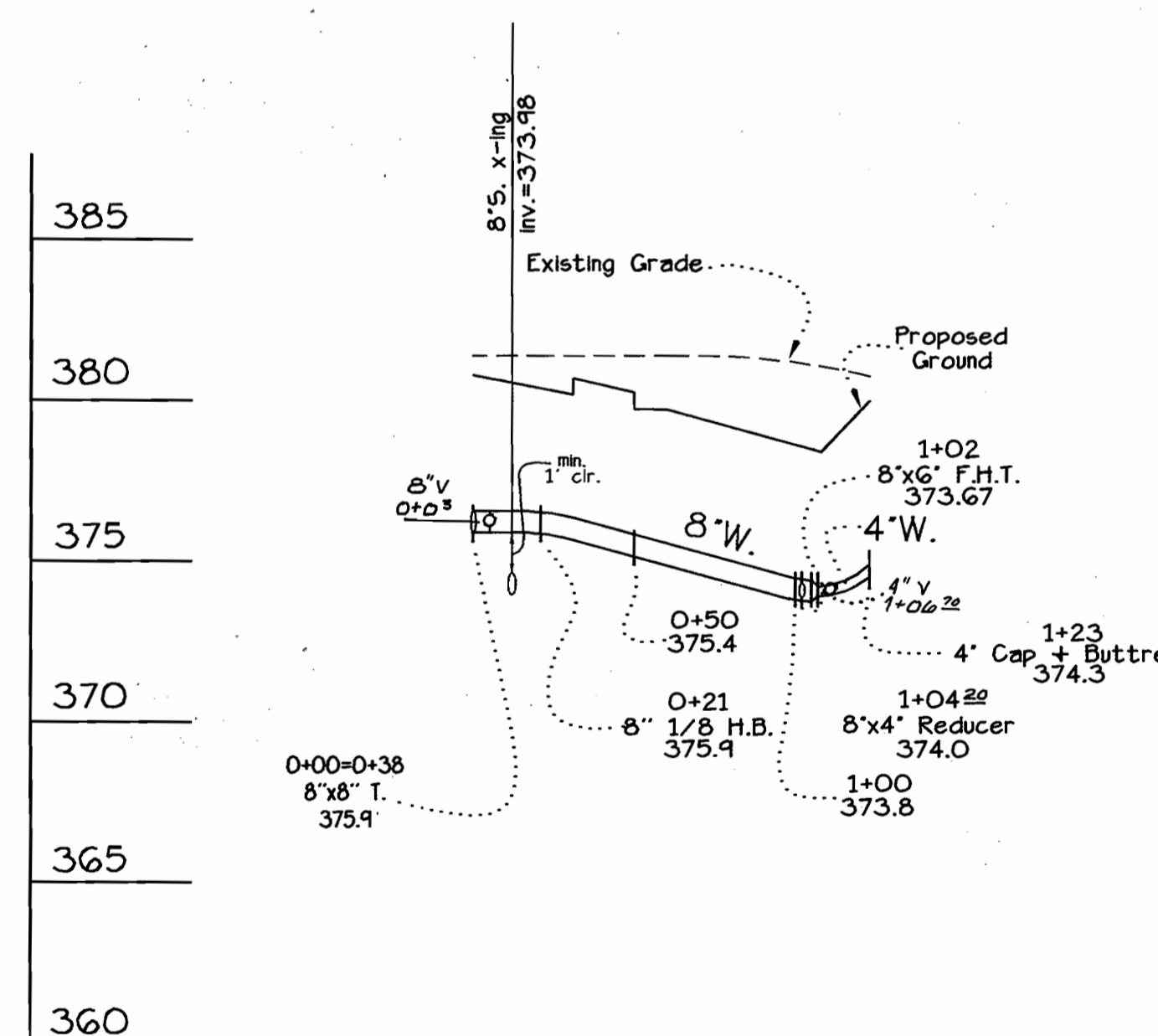


SEWER PROFILE

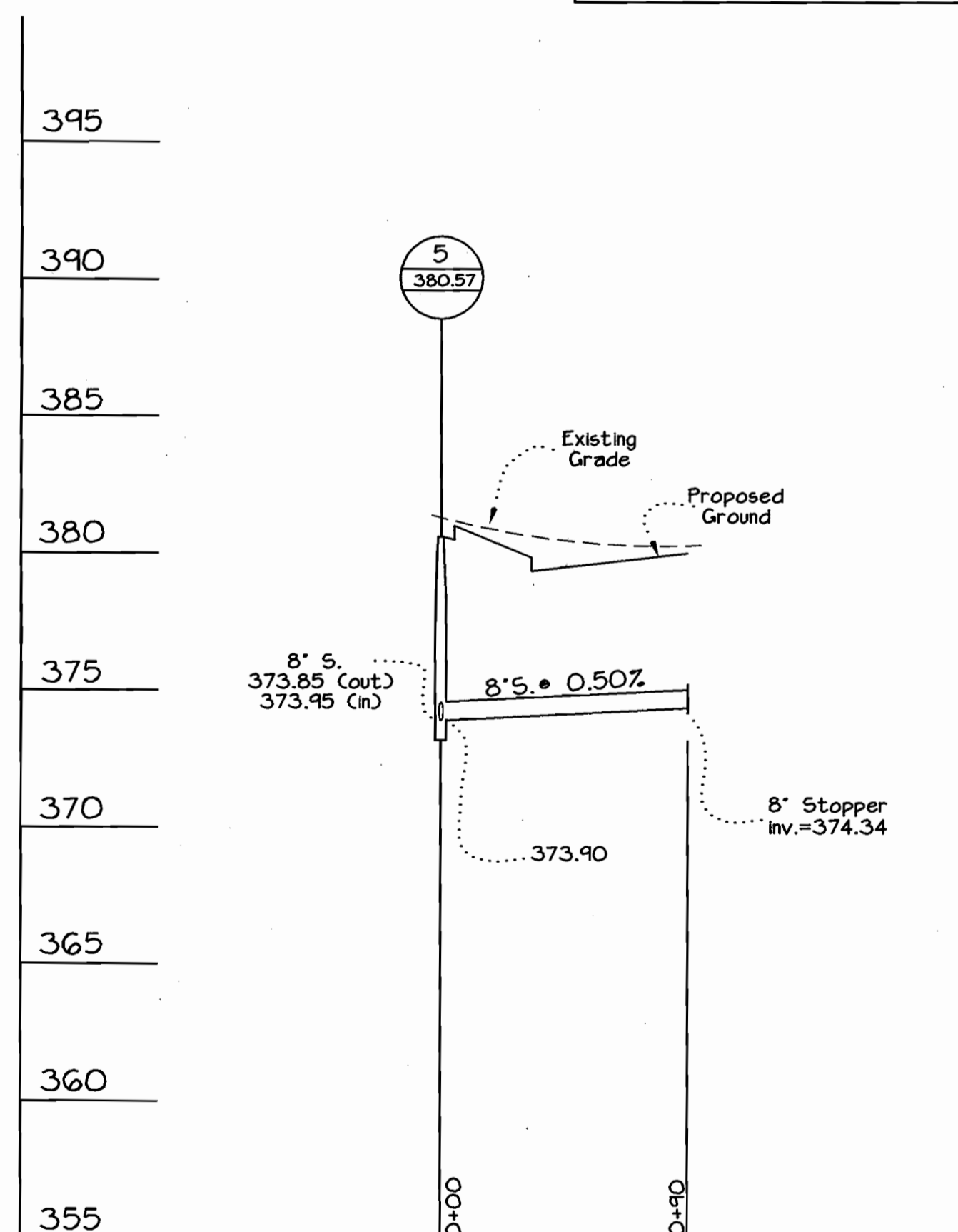


WATER PROFILE

Profile Scales:
Horizontal: 1"=50'
Vertical: 1"=5'



WATER PROFILE



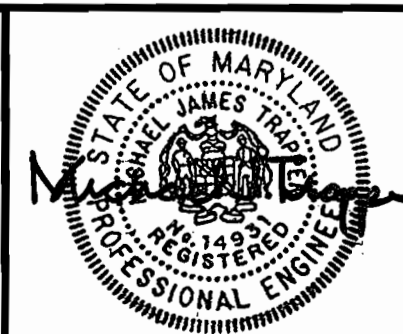
SEWER PROFILE

GLW FILE #95003
Water + Sewer Final

DEPARTMENT OF
PUBLIC WORKS
HOWARD COUNTY, MARYLAND
R. J. ...
6-21-02
DATE

DEPARTMENT OF
PLANNING AND ZONING
HOWARD COUNTY, MARYLAND
M. ...
7/1/02
DATE

GLW GUTSCHICK LITTLE & WEBER, P.A.
CIVIL ENGINEERS, LAND SURVEYORS, LAND PLANNERS, LANDSCAPE ARCHITECTS
3909 NATIONAL DRIVE - SUITE 250 - BURTONSVILLE OFFICE PARK
BURTONSVILLE, MARYLAND 20866
TEL: 301-421-4024 BAL: 410-880-1820 DC/VA: 301-989-2524 FAX: 301-421-4188



DES: Wsj					
DRN: Wsj					
CHK: not					
DATE: June 2002	KCI	1	REBUILD DATA ADDED TO PLAN	9/5/02	
BY	NO		REVISION	DATE	

WATER and SEWER EXTENSION
PROFILES
600' SCALE MAP NO. 36 + 37, BLOCK NO. 18 + 17

ROUTE 175 COMMERCIAL
PARCELS 'C-6 THRU C-8'
SECTION 1 AREA 2
CONTRACT No. 24-4035-D
ELECTION DISTRICT No. 6
HOWARD COUNTY, MARYLAND

SCALE
As
Shown
SHEET
3 OF 3