

**GENERAL NOTES**

**PART I**

- APPROXIMATE LOCATION OF EXISTING MAINS ARE SHOWN. THE CONTRACTOR SHALL TAKE ALL NECESSARY PRECAUTIONS TO PROTECT EXISTING MAINS AND SERVICES AND MAINTAIN UNINTERRUPTED SERVICE. ANY DAMAGE INCURRED SHALL BE REPAIRED IMMEDIATELY TO THE SATISFACTION OF THE ENGINEER AT THE CONTRACTOR'S EXPENSE.
- ALL HORIZONTAL CONTROLS ARE BASED ON MARYLAND STATE COORDINATES, NAD 83.
- ALL VERTICAL CONTROLS ARE BASED ON NAVD 88.
- ALL PIPE ELEVATIONS SHOWN ARE INVERT ELEVATIONS, UNLESS OTHERWISE NOTED ON THE PLAN.
- CLEAR ALL UTILITIES BY A MINIMUM OF 12". CLEAR ALL POLES BY 5'-0" MINIMUM OR TUNNEL AS REQUIRED. THE OWNER HAS CONTACTED THE UTILITY COMPANIES AND HAS MADE ARRANGEMENTS FOR BRACING OF POLES AS SHOWN ON DRAWINGS. IN THE EVENT THE CONTRACTOR'S WORK REQUIRES THE BRACING OF ADDITIONAL POLES, ANY COST INCURRED BY THE OWNER FOR BRACING OF ADDITIONAL POLES OR DAMAGES SHALL BE DEDUCTED FROM MONEY OWED THE CONTRACTOR. THE CONTRACTOR SHALL COORDINATE WITH THE UTILITY COMPANIES TO SCHEDULE THE BRACING OF THE POLES.
- FOR DETAILS NOT SHOWN ON THE DRAWINGS, AND FOR MATERIALS AND CONSTRUCTION METHODS USE HOWARD COUNTY DESIGN MANUAL, VOLUME IV, STANDARD SPECIFICATIONS AND DETAILS FOR CONSTRUCTION (LATEST EDITION). THE CONTRACTOR SHALL HAVE A COPY OF VOLUME IV ON THE JOB.
- WHERE TEST PITS HAVE BEEN MADE ON EXISTING UTILITIES, THEY ARE NOTED BY THE SYMBOL AT THE LOCATION OF THE TEST PIT. A NOTE OR NOTES CONTAINING THE RESULTS OF THE TEST PIT OR PITS IS INCLUDED ON THE DRAWINGS. EXISTING UTILITIES IN THE VICINITY OF THE PROPOSED WORK FOR WHICH TEST PITS HAVE NOT BEEN DUG SHALL BE LOCATED BY THE CONTRACTOR TWO WEEKS IN ADVANCE OF CONSTRUCTION AT HIS OWN EXPENSE.
- THE CONTRACTOR SHALL NOTIFY THE FOLLOWING UTILITY COMPANIES OR AGENCIES AT LEAST FIVE WORKING DAYS BEFORE STARTING WORK SHOWN THESE PLANS:
 

AT&T	1-800-252-1133
BGE (CONTRACTOR SERVICES)	410-850-4620
BGE (UNDERGROUND DAMAGE CONTROL)	410-287-6088
BUREAU OF UTILITIES	410-313-4900
COLONIAL PIPELINE CO.	410-795-1390
MISS UTILITY	1-990-257-7777
STATE HIGHWAY ADMINISTRATION	410-531-5533
VERIZON	1-800-743-0033/410-224-9210
- TREES AND SHRUBS ARE TO BE PROTECTED FROM DAMAGE TO THE MAXIMUM EXTENT. TREES AND SHRUBS LOCATED WITHIN THE CONSTRUCTION STRIP ARE NOT TO BE REMOVED OR DAMAGED BY THE CONTRACTOR.
- THE CONTRACTOR SHALL REMOVE TREES, STUMPS AND ROOTS ALONG LINE OF EXCAVATION. PAYMENT FOR SUCH REMOVAL SHALL BE INCLUDED IN THE UNIT PRICE BID FOR THE CONSTRUCTION OF THE MAIN.
- THE CONTRACTOR SHALL NOTIFY THE BUREAU OF HIGHWAYS, HOWARD COUNTY, AT (410) 313-2450 AT LEAST FIVE WORKING DAYS BEFORE ANY OPEN CUT OF ANY COUNTY ROAD OR BORING/JACKING OPERATION IN COUNTY ROADS FOR LAYING WATER/SEWER MAIN OR HOUSE CONNECTIONS. THE APPROVAL OF THESE DRAWINGS WILL CONSTITUTE COMPLIANCE WITH DPW REQUIREMENTS PER SECTION 18.114(g) OF THE HOWARD COUNTY CODE.

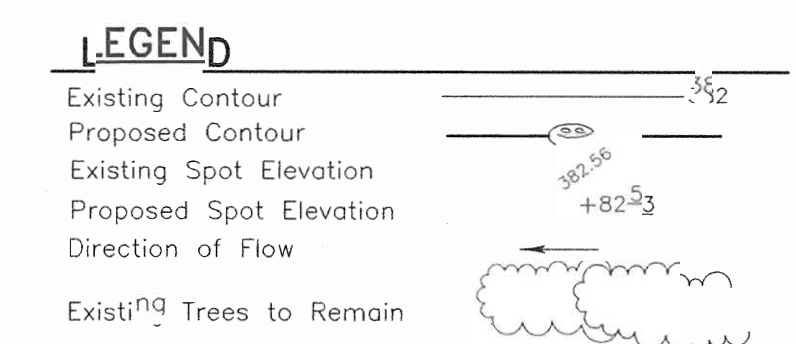
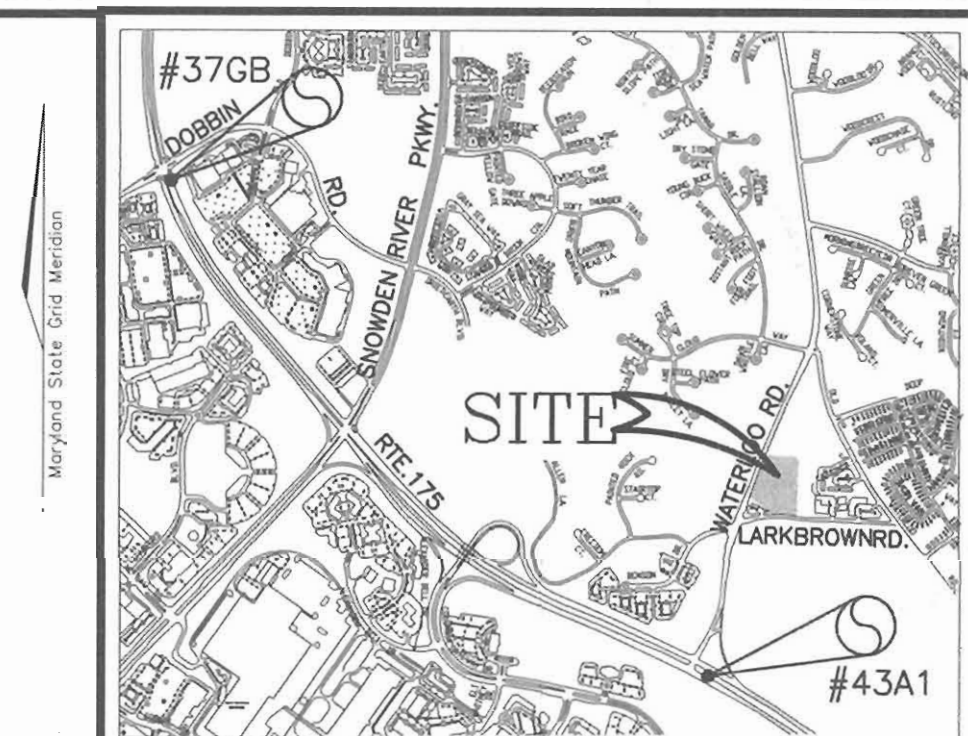
**PART II - WATER**

- ALL WATER MAINS TO BE D.I.P. CLASS 52 UNLESS OTHERWISE NOTED.
- TOPS OF ALL WATER MAINS TO HAVE A MINIMUM OF 3'-1/2' COVER UNLESS OTHERWISE NOTED.
- VALVES ADJACENT TO TEES SHALL BE STRAPPED TO TEES.
- ALL FITTINGS SHALL BE BUTTRESSED OR ANCHORED WITH CONCRETE IN ACCORDANCE WITH THE STANDARD DETAILS UNLESS OTHERWISE PROVIDED FOR ON THE DRAWINGS.
- FIRE HYDRANTS SHALL BE SET TO THE BURY LINE ELEVATIONS SHOWN ON THE DRAWINGS. ALL FIRE HYDRANTS SHALL BE RESTRAINED AND BUTTRESSED WITH CONCRETE IN ACCORDANCE WITH STANDARD DETAILS. SOIL AROUND FIRE HYDRANT SHALL BE COMPACTED IN ACCORDANCE WITH SECTION 1000 AND 1005 OF THE STANDARD SPECIFICATIONS.
- THE CONTRACTOR SHALL NOT OPERATE ANY WATER MAIN VALVES ON THE EXISTING WATER SYSTEM.

**PART III - SEWER**

- ALL SEWER MAINS SHALL BE D.I.P. OR P.V.L. UNLESS OTHERWISE NOTED.
- ALL MANHOLES SHALL BE 4'-0" INSIDE DIAMETER UNLESS OTHERWISE NOTED.
- SEWER MAINS SHALL BE D.I.P. ONLY.
- MANHOLES SHOWN WITH 12" AND 16" WALLS ARE FOR BRICK MANHOLES ONLY.
- MANHOLES DESIGNATED W.T. IN PLAN AND PROFILE SHALL HAVE WATERTIGHT FRAME AND COVERS, STANDARD DETAIL 05.22. WHERE WATERTIGHT MANHOLE FRAME AND COVER IS USED, SET TOP OF FRAME 18" ABOVE FINISHED GRADE UNLESS OTHERWISE NOTED ON THE DRAWINGS.
- HOUSE(S) WITH THE SYMBOL "C.N.S." INDICATES THAT CELLAR CANNOT BE SERVED.

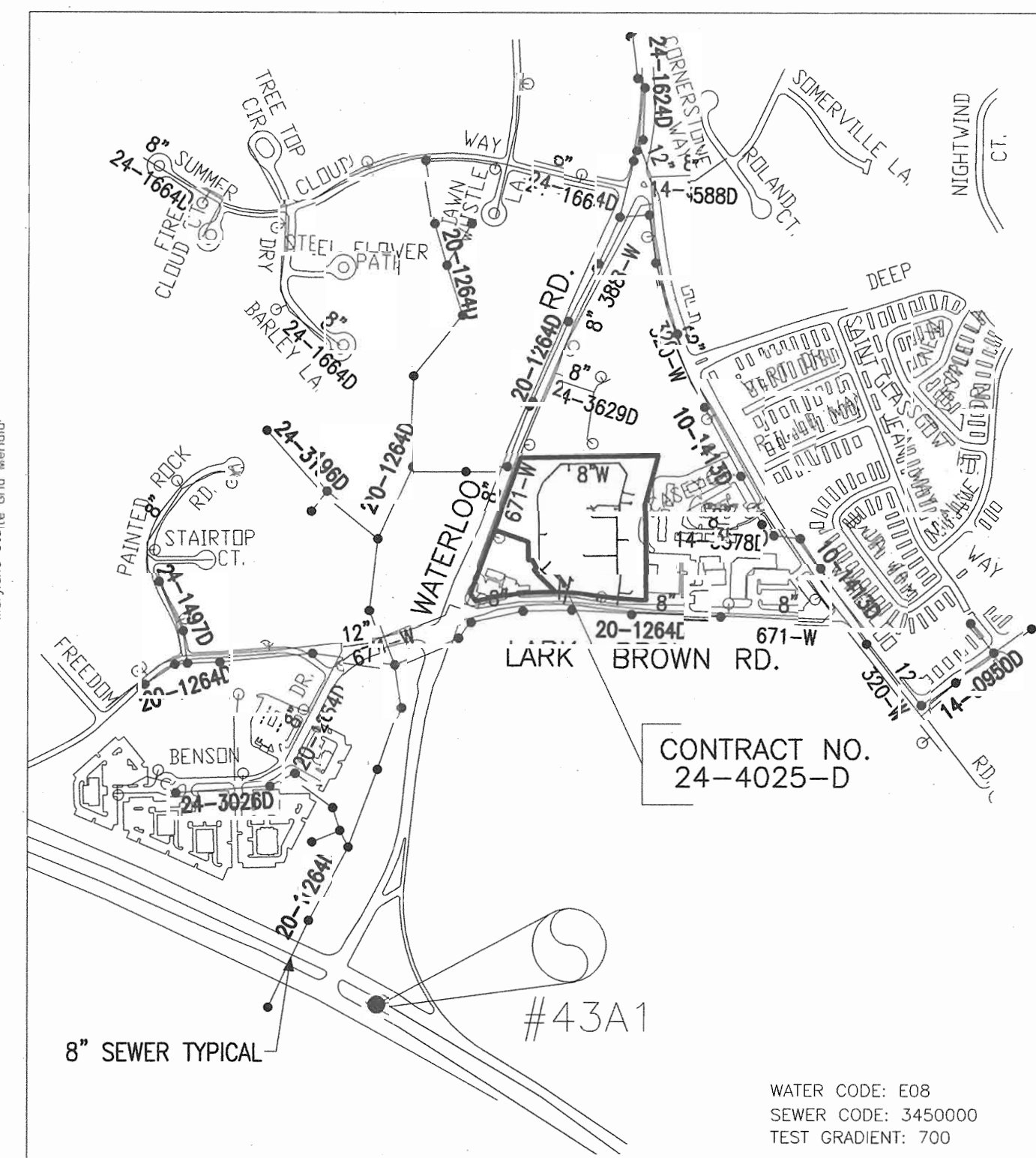
# PUBLIC WATER AND SEWER PLAN GATEWAY OFFICE PARK PARCEL 'A' CONTRACT NO. 24-4025-D



**BENCHMARKS**

HOWARD COUNTY MONUMENT #37GB  
N 553452.821 E 1368503.167  
ELEV. 325.937  
REBAR & CAP - 3.1' FROM NORTH SIDE OF RTE. 175, 6.7' FROM CORNER OF PKG LOT AND 44.9' SW OF INLET.

HOWARD COUNTY MONUMENT #43A1  
N 552081.823 E 1370625.811  
ELEV. 341.471  
STD. CONC. MON. IN THE MEDIAN OFF RTE. 175, AT THE TURN AROUND LOCATED 0.25 MI. FROM THE TRAFFIC LIGHT AT RTE. 10R.



Type of Buildings :	OFFICE
No. of Lots/Parcels :	1
No. of single Water House <sup>90</sup> Connections :	9
No. of twin Water House <sup>90</sup> Connections :	0
No. of Sewer House Connections :	9
Drainage Area :	LITTLE PATUXENT WATERSHED
Treatment Plant :	LITTLE PATUXENT RIVER

VICINITY MAP  
SCALE: 1"=600'

**DEVELOPER**  
CHARTWELL PROFESSIONAL PARK, L.L.C.  
C/O JAMES M. JOST & CO., INC.  
7370 GRACE DRIVE, SUITE A  
COLUMBIA, MARYLAND 21044  
(410) 535-9200  
CONTACT: JAMES JOST

**OWNERS**  
CAROLYN PATRICIA HAWKINS  
8180 LARK BROWN ROAD  
ELK RIDGE, MD 21075

JARRIE V. NORMAN  
8170 LARK BROWN ROAD  
ELK RIDGE, MD 21075-6420

SHEET INDEX	
DESCRIPTION	SHEET NO.
COVER SHEET	1 of 3
SITE PLAN	2 of 3
WATER AND SEWER PROFILES	3 of 3

THIS DEVELOPMENT IS APPROVED FOR SOIL EROSION AND SEDIMENT CONTROL BY THE HOWARD COUNTY SOIL CONSERVATION DISTRICT.

*John R. Roberts* 8/27/02  
SOIL CONSERVATION DISTRICT

*Jim Meyer* 8/27/02  
SOIL CONSERVATION DISTRICT

DEPARTMENT OF PUBLIC WORKS  
HOWARD COUNTY, MARYLAND

DEPARTMENT OF PLANNING & ZONING  
HOWARD COUNTY, MARYLAND

*R. H. Benjamin* 8-20-02  
CHIEF, BUREAU OF UTILITIES

*John Meyer* 8/20/02  
CHIEF, DEVELOPMENT & ENGINEERING DIVISION

**FREDERICK WARD ASSOCIATES, INC.**  
7125 Riverwood Drive Columbia, Maryland 21046-2354  
Phone: 410-290-9550 Fax: 410-720-6226  
Bel Air, Maryland Columbia, Maryland Warrenton, Virginia

**STATE OF MARYLAND**  
ROBERT HARRIS VOGEL  
REGISTERED PROFESSIONAL ENGINEER  
No. 1833

DES:	KO	D.F.		Revise WHC to Building 1A.	10-20-04
CHK:	JAJ				
CHK:	RHV				
DATE:	AUGUST 2002	BY:	NO.	REVISION	DATE

**FINAL  
PUBLIC WATER AND SEWER MAIN  
PLAN AND PROFILES**

SCALE AS SHOWN

600' SCALE MAP NO. 37

BLOCK NO. 19 & 20

**GATEWAY OFFICE PARK  
PARCELS A & B  
A RESUBDIVISION OF LOTS 1 & 2  
CONTRACT NO. 24-4025-D**

TYPICAL MAP #37 GRID #19 & 20  
60' ELEVATION DISTRICT

PARCEL 265  
HOWARD COUNTY, MARYLAND

SCALE AS SHOWN

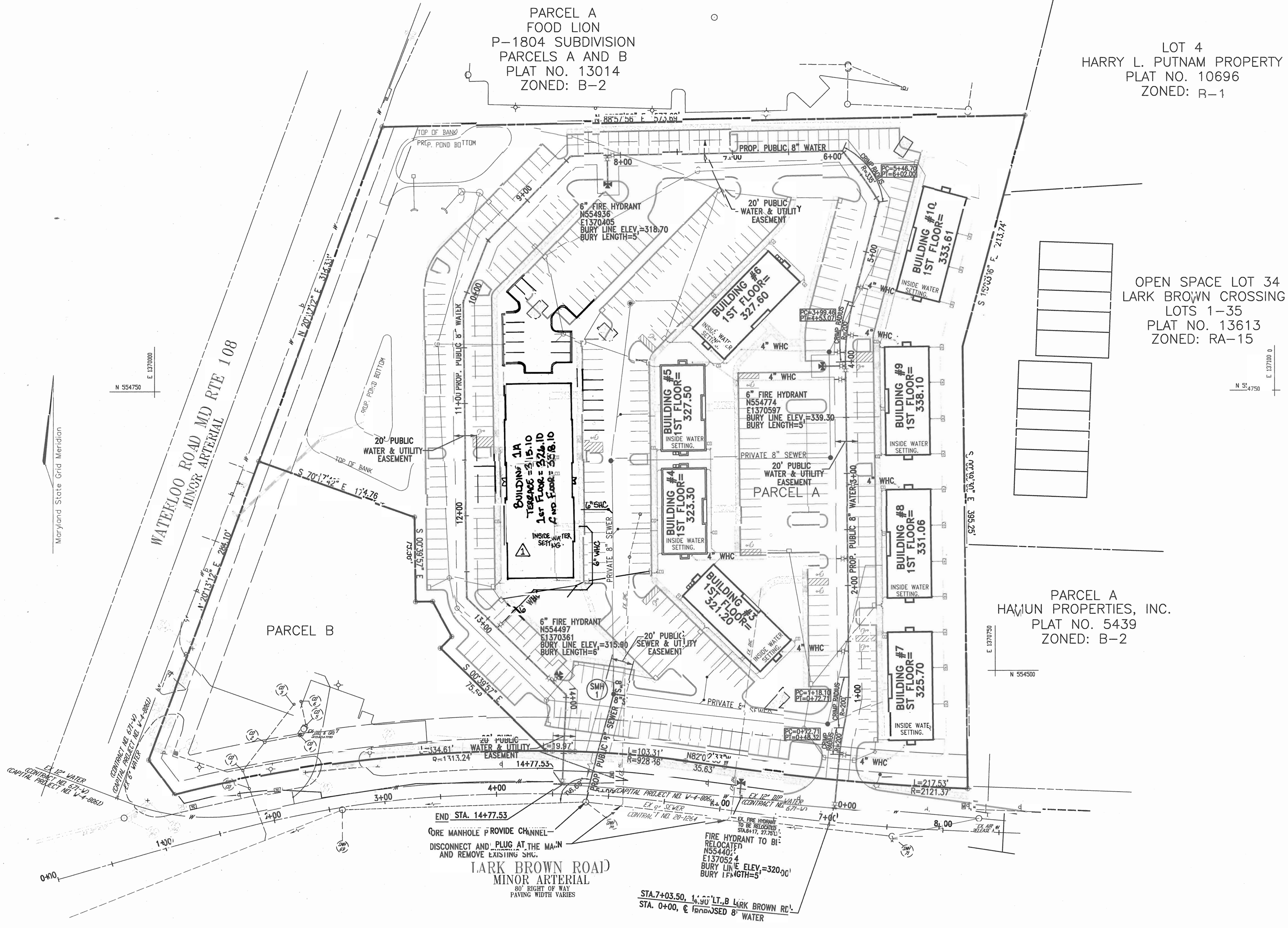
SHEET 1 OF 3



WATER STRUCTURE SCHEDULE		
STATION	DESCRIPTION	BLDG.
0+00.00	12" x 8" TAPPING SLEEVE AND VALVE	-
0+48.50	8" x 4" TEE, 4" WHC W/4" VALVE	7
1+35.50	8" x 4" TEE, 4" WHC W/4" VALVE	3
2+24.20	8" x 4" TEE, 4" WHC W/4" VALVE	4
2+90.00	8" x 4" TEE, 4" WHC W/4" VALVE	8
3+84.00	8" x 4" TEE, 4" WHC W/4" VALVE	5
3+91.20	8" ISOLATION VALVE	-
3+96.00	8" x 6" TEE W/6" VALVE AND 6" F.H.	-
4+08.00	8" x 4" TEE, 4" WHC W/4" VALVE	6
4+24.00	8" x 4" TEE, 4" WHC W/4" VALVE	9
4+68.00	8" x 4" TEE, 4" WHC W/4" VALVE	10
5+46.70	8" - 1/4 BEND	-
6+02.00	8" - 1/4 BEND	-
8+07.00	8" ISOLATION VALVE	-
8+12.00	8" x 6" TEE W/6" VALVE AND 6" F.H.	-
8+45.00	8" - 1/4 BEND	-
9+50.00	8" - 1/8 BEND	-
10+04.00	8" - 1/8 BEND	-
12+74.00	8" - 1/8 BEND	2
13+11.00	8" x 6" TEE, 6" WHC W/6" VALVE	1A
13+71.00	8" ISOLATION VALVE	-
13+76.00	8" x 6" TEE W/6" VALVE AND 6" F.H.	-
13+97.00	8" - 1/4 BEND	-
14+77.53	12" x 8" TAPPING SLEEVE AND VALVE	-

QUANTITIES				
NAME OF UTILITY CONTRACTOR :				
SURVEY AND DRAFTING DIVISION AS-BUILT DATE :				
ITEMS	QUANTITIES ESTIMATED	QUANTITIES AS-BUILT	TYPE	MANUFACTURER/SUPPLIER
4" D.I.P.	120 LF			
4" VALVE	10 EA			
6" D.I.P.	63 LF			
6" VALVE	3 EA			
5" FIRE HYDRANT	3 EA			
8" 1/8 BEND	3 EA			
8" 1/4 BEND	4 EA			
8"x4" TEE	0 EA			
8"x6" TEE	3 EA			
8" ISOLATION VALVE	3 EA			
2"x8" TAPPING SLEEVE AND VALVE	2 EA			
8" SEWER	102 LF			
8" D.I.P.	1480 LF			
SEWER MANHOLE	1 EA			

SEDIMENT CONTROL MEASURES WILL BE IMPLEMENTED IN ACCORDANCE WITH SECTION 219 OF THE SPECIFICATIONS AND WITH SITE DEVELOPMENT PLAN SDP-02-52.



PLAN VIEW  
SCALE: 1"=50'

THIS DEVELOPMENT IS APPROVED FOR SOIL EROSION AND SEDIMENT CONTROL BY THE HOWARD COUNTY SOIL CONSERVATION DISTRICT.

REVIEWED FOR HOWARD COUNTY SOIL CONSERVATION DISTRICT AND MEETS TECHNICAL REQUIREMENTS.

*John R. Robertson* 8/27/02 *Jim Myers* 8/27/02  
SOIL CONSERVATION DISTRICT DATE SOIL CONSERVATION DISTRICT DATE

DEPARTMENT OF PUBLIC WORKS  
HOWARD COUNTY, MARYLAND

*R. Robinson* 8-20-02  
CHIEF, BUREAU OF UTILITIES DATE

DEPARTMENT OF PLANNING & ZONING  
HOWARD COUNTY, MARYLAND

*Chris Robinson* 8/29/02  
CHIEF, DEVELOPMENT ENGINEERING DIVISION DATE

**FREDERICK WARD ASSOCIATES, INC.**  
7125 Riverwood Drive Columbia, Maryland 21046-2354  
Phone: 410-290-9550 Fax: 410-720-6226  
Bel Air, Maryland Columbia, Maryland Warrenton, Virginia

STATE OF MARYLAND  
ROBERT HARRIS VEGEL  
REGISTERED PROFESSIONAL ENGINEER  
EXPIRES 12/31/04  
REPORT H. WARE, PE, No. 16193

DES:	CLS	D.#:	23	Revised WHC to Building 1A.	10-20-04
DRN:	JAJ				
CHK:	RHV				
DATE:	AUGUST 2002	BY:	NO.	REVISION	DATE

**FINAL  
PUBLIC WATER AND SEWER MAIN  
PLAN AND PROFILES**

600' SCALE MAP NO. 37  
BLOCK NO. 19 & 20

**GATEWAY OFFICE PARK  
PARCELS A & B  
A RESUBDIVISION OF LOTS 1 & 2  
CONTRACT NO. 24-4025-D**

TX MAP #17 GRID #19 & 20  
4th ELECTION DISTRICT

PARCEL 205  
2 OF 3  
HOWARD COUNTY, MARYLAND



