

GENERAL NOTES

PART I - GENERAL

- Approximate location of existing mains are shown. The contractor shall take all necessary precautions to protect existing mains and services and maintain uninterrupted supply. Any damage incurred shall be repaired immediately to the satisfaction of the Engineer at the Contractor's expense.
- All horizontal controls are based on Maryland State Coordinates. [North American Datum of 1983 (NAD '83)].
- All vertical controls are based on U.S.G.S. data.
- All pipe elevations shown are invert elevations.
- Clear all utilities by a minimum of 6". Clear all poles by 2'-0" minimum or tunnel as required. The owner has contacted the utility companies and has made arrangements for bracing of poles as shown on the drawings. In the event that the contractor's work requires the bracing of additional poles, any cost incurred by the owner for bracing of additional poles or damages shall be deducted from money owed the contractor. The contractor shall coordinate with the utility companies to schedule the bracing of the poles.
- For details not shown on the drawings, and for materials and construction methods, use Howard County Design Manual, Volume IV, Standard Specifications and Details for Construction (Latest Edition). The contractor shall have a copy of Volume IV on the job.
- Where test pits have been made on existing utilities, they are noted by the symbol at the location of the test pit. A note or notes containing the results of the test pit or pits is included on the drawings. Existing utilities in the vicinity of the proposed work for which test pits have not been dug shall be located by the contractor two weeks in advance of construction operations at his own expense.
- Contractor shall notify the following utility companies or agencies at least five working days before starting work shown on these plans:

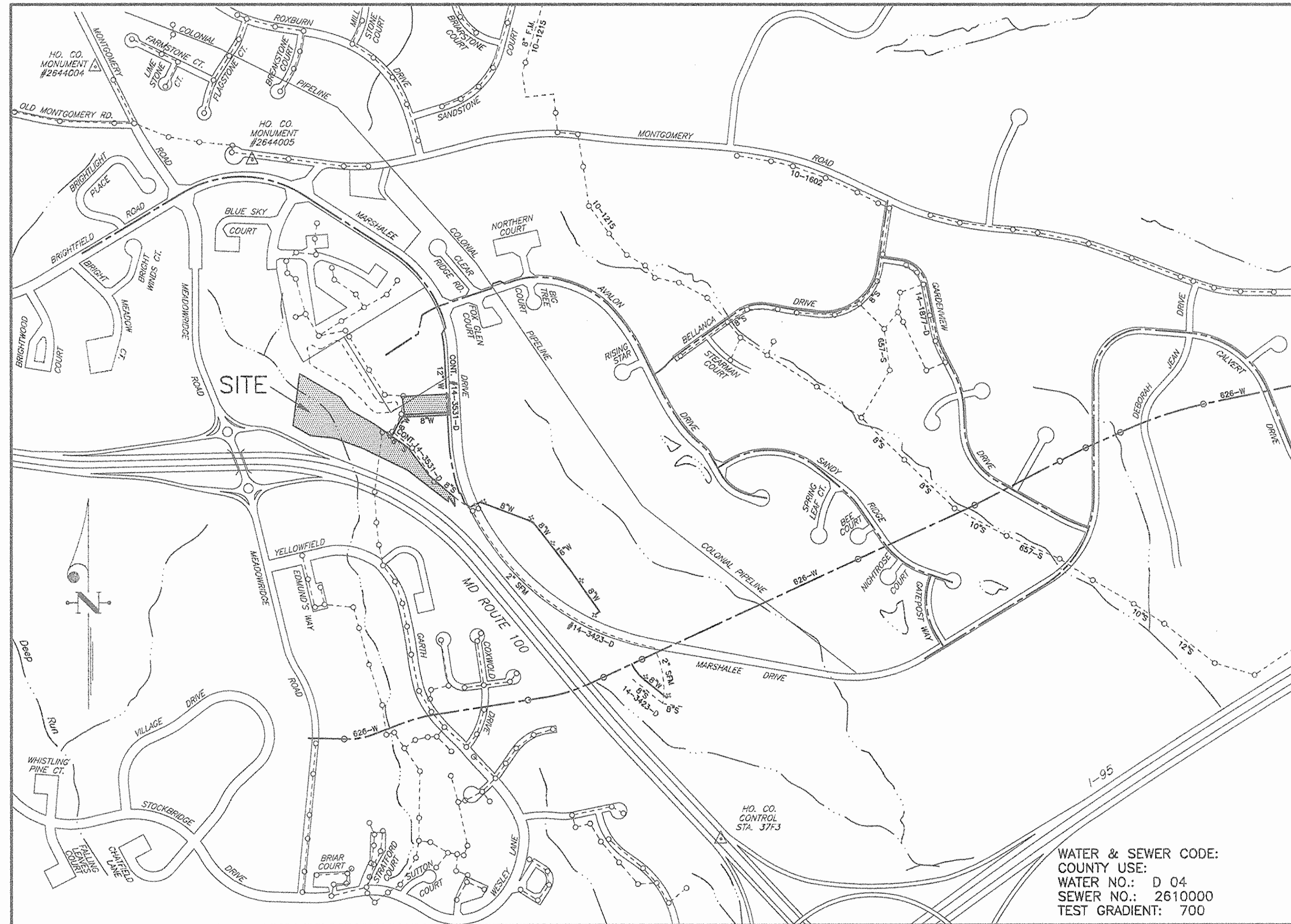
State Highway Administration	410-531-5533
BC&E Co. Contractor Services	410-850-4620
BC&E Co. Under Ground Damage Control	410-291-4607
Miss Utility	1-800-257-7777
Colonial Pipeline Co.	410-549-4120
Howard County Department of Public Works	410-313-4900
Bureau of Utilities	1-800-446-5266
Bell Atlantic	
- Trees and shrubs are to be protected from damage to maximum extent. Trees and shrubs located within the construction strip are not to be removed or damaged by the contractor.
- Contractor shall remove trees, stumps and roots along line of excavation. Payment for such removal shall be included in the unit price bid for construction of the main.
- The contractor shall notify the Bureau of Highways, Howard County, at (410) 313-2450 at least five working days before any open cut of any County road or boring/jacking operation in County roads for laying water/sewer mains or house connections. The approval of these drawings will constitute compliance with DPW requirements per Section 18.114(a) of the Howard County Code.

PART II - WATER

- All water mains to be D.I.P. Class 50 unless otherwise noted.
- Tops of all water mains to have a minimum of 3'-1/2' cover unless otherwise noted.
- Valves adjacent to tees shall be snapped to tees.
- All fittings shall be buttressed or anchored with concrete in accordance with the Standard Details unless otherwise provided for on the drawings.
- Fire hydrants shall be set to the bury line elevations shown on the drawings. All fire hydrants shall be restrained and buttressed with concrete in accordance with Standard Details. Soil around the fire hydrant shall be compacted in accordance with Sections 1000 and 1005 of the Standard Specifications.
- The contractor shall not operate any water main valves on the existing water system.
- All water house connections shall be for inside meter setting unless otherwise noted on plans or in specifications.
- For sprinkler system for all townhomes or multi-family dwelling units shall have a minimum of 1" connection with a 3/4" meter.

PART III - SEWER

- All sewer mains shall be DIP or P.V.C. unless otherwise noted.
- All manholes shall be 4'-0" inside diameter unless otherwise noted.
- Force mains shall be D.I.P. only.
- Manholes shown with 12" and 16" walls are for brick manholes only.
- Manholes designated W.T. in plan and profile shall have watertight frame and covers, Standard Detail 05.52. Where watertight manhole frame and cover is used, set top of frame 1" - 6" above finished grade unless otherwise noted on the drawings.
- House(s) with the symbol "C.N.S." indicates that cellar cannot be served.



LOCATION MAP
SCALE: 1" = 600'

WATER & SEWER CODE:
COUNTY USE:
WATER NO.: D 04
SEWER NO.: 2610000
TEST GRADIENT: 700

TYPE OF BUILDING	COMMERCIAL
NO. OF LOTS/PARCELS	1 (PARCEL)
NO. OF WATER HOUSE CONNECTIONS	1
NO. OF SEWER HOUSE CONNECTIONS	1
DRAINAGE AREA	DEEP RUN (PATAPSCO)
TREATMENT PLANT	PATAPSCO WASTEWATER TREATMENT PLANT

BENCH MARKS

HOWARD COUNTY MONUMENT #2644004 ELEV. 402.135
CONCRETE MONUMENT 0.1' BELOW SURFACE, SW CORNER OF INTERSECTION ROUTE 103 AND OLD MONTGOMERY ROAD.

HOWARD COUNTY MONUMENT #2644005 ELEV. 416.981
CONCRETE MONUMENT 0.2' BELOW SURFACE, SOUTH SIDE OF MONTGOMERY ROAD, EAST OF MEADOWRIDGE ROAD.

WATER & SEWER CONSTRUCTION PLANS
LYNDWOOD SQUARE
PARCELS A-7 AND E-1
1ST ELECTION DISTRICT HOWARD COUNTY, MARYLAND
CONTRACT No. 14-3996-D

SEDIMENT CONTROL MEASURES WILL BE IMPLEMENTED IN ACCORDANCE WITH SECTION 219 OF THE SPECIFICATIONS AND WITH SITE DEVELOPMENT PLAN, SDP-02-083, DRAWINGS 3 - 4 OF 5, SEDIMENT AND EROSION CONTROL.

REVIEWED FOR HOWARD SOIL CONSERVATION DISTRICT AND MEETS TECHNICAL REQUIREMENTS.

John M. Myers 4/16/02
SIGNATURE DATE
U. S. SOIL CONSERVATION SERVICE

THIS DEVELOPMENT PLAN IS APPROVED FOR SOIL EROSION AND SEDIMENT CONTROL BY THE HOWARD SOIL CONSERVATION DISTRICT.

APPROVED: *John R. Roberts* 4/16/02
HOWARD S. C. D. DATE

ITEMS	QUANTITIES ESTIMATED	AS-BUILT		
		QUANTITIES	TYPE	MANUFACTURER/SUPPLIER
6" SDIP	10 LF	130 LF	DIP CLASS 52	CRIPPA/HUGHES SUPPLY
6" DIP	V.F.	20.0 V.F.	"	"
6" W	10 LF	23 LF	"	"
8" W	515 LF	517 LF	"	"
FH & FHV	1 EA	1 EA	AWWA W250B 20" RESILIENT SEAT	KEENEY/HUGHES SUPPLY
12" X 8" TSKV	1 EA	1 EA	AWWA W250B 20" RESILIENT SEAT	"
6" VALVE	1 EA	1 EA	AWWA W250B 20" RESILIENT SEAT	"

NAME OF UTILITY CONTRACTOR: VEHTRESCA ELTERPRISES
SURVEY AND DRAFTING DIVISION AS-BUILT DATE: SEWER & WATER AS-BUILTS

DEPARTMENT OF PUBLIC WORKS
HOWARD COUNTY, MARYLAND

R. J. ... 4-9-02
DATE

DEPARTMENT OF PLANNING & ZONING
HOWARD COUNTY, MARYLAND

... 4/2/02
DATE

CLARK · FINEFROCK & SACKETT, INC.
ENGINEERS · PLANNERS · SURVEYORS

7135 MINSTREL WAY COLUMBIA, MD 21045
(410) 381-7500 BALT. (301) 621-8100 WASH.



DES:	JTR			
DRN:	LAI			
CHK:	CCM			
DATE:	8-8-00			
BY:	KCI	1	AS-BUILT DATA ADDED TO PLAN	10/28/02
			REVISION	DATE

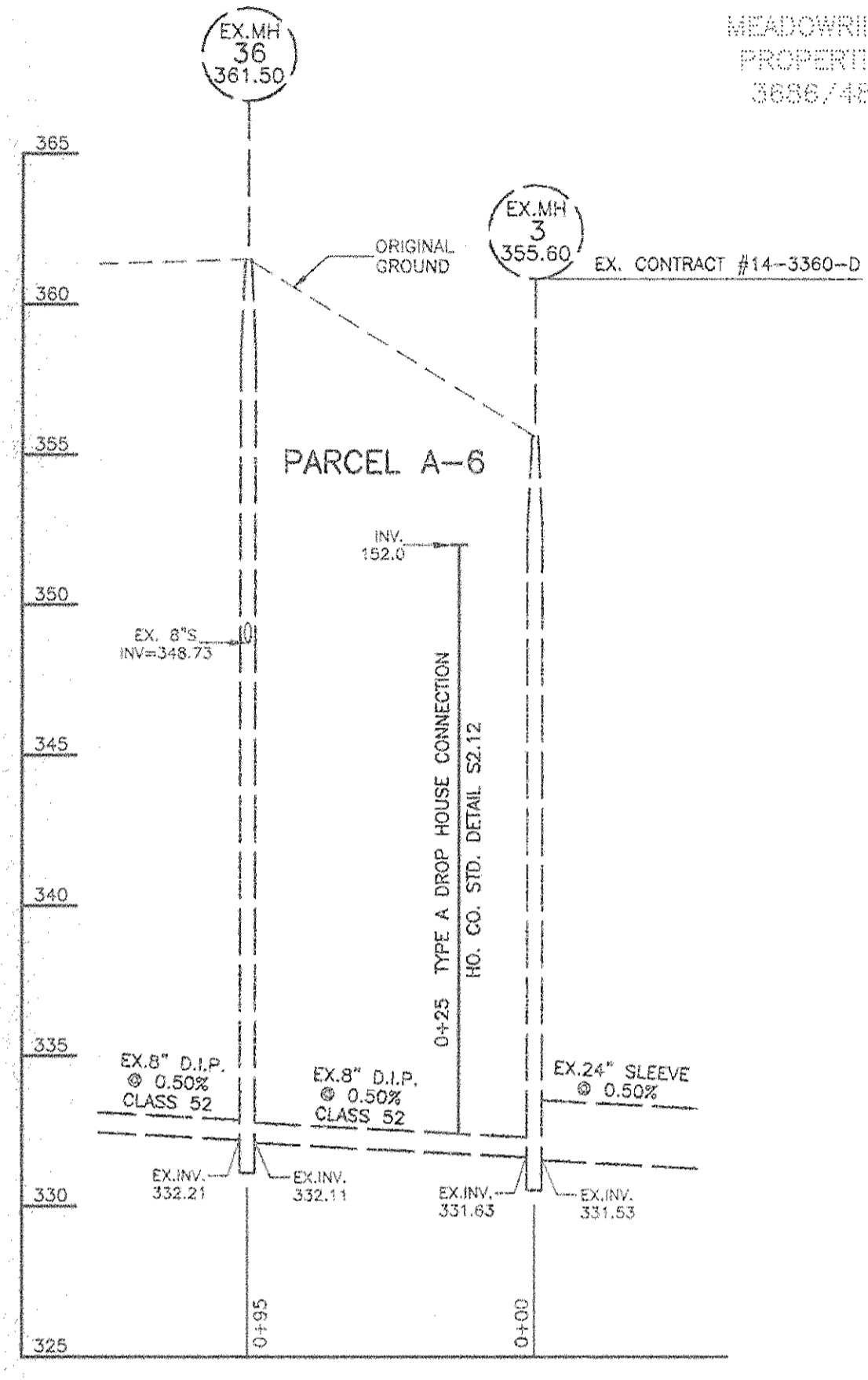
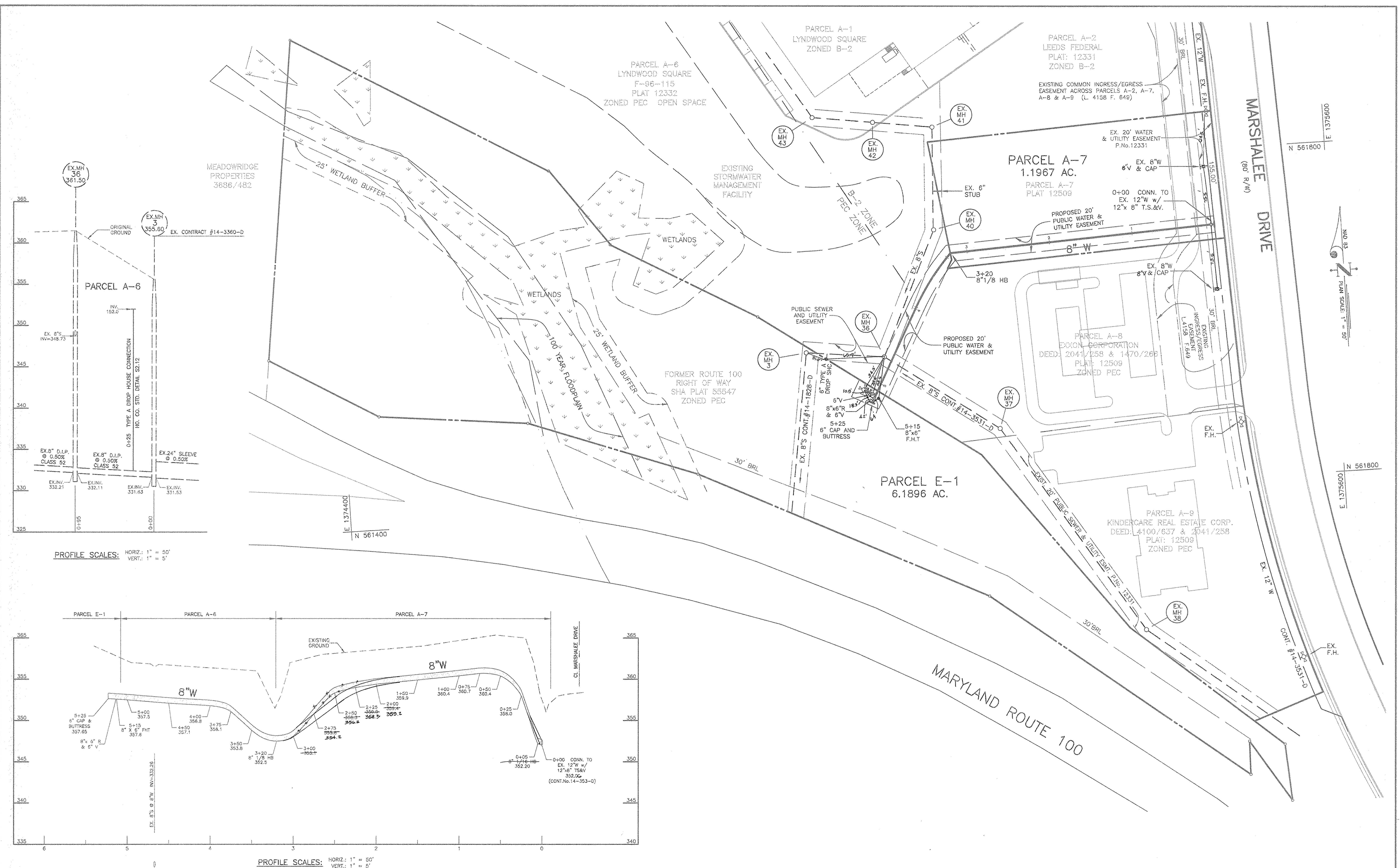
TITLE SHEET

600' SCALE MAP NO. 37 BLOCK NO. 10

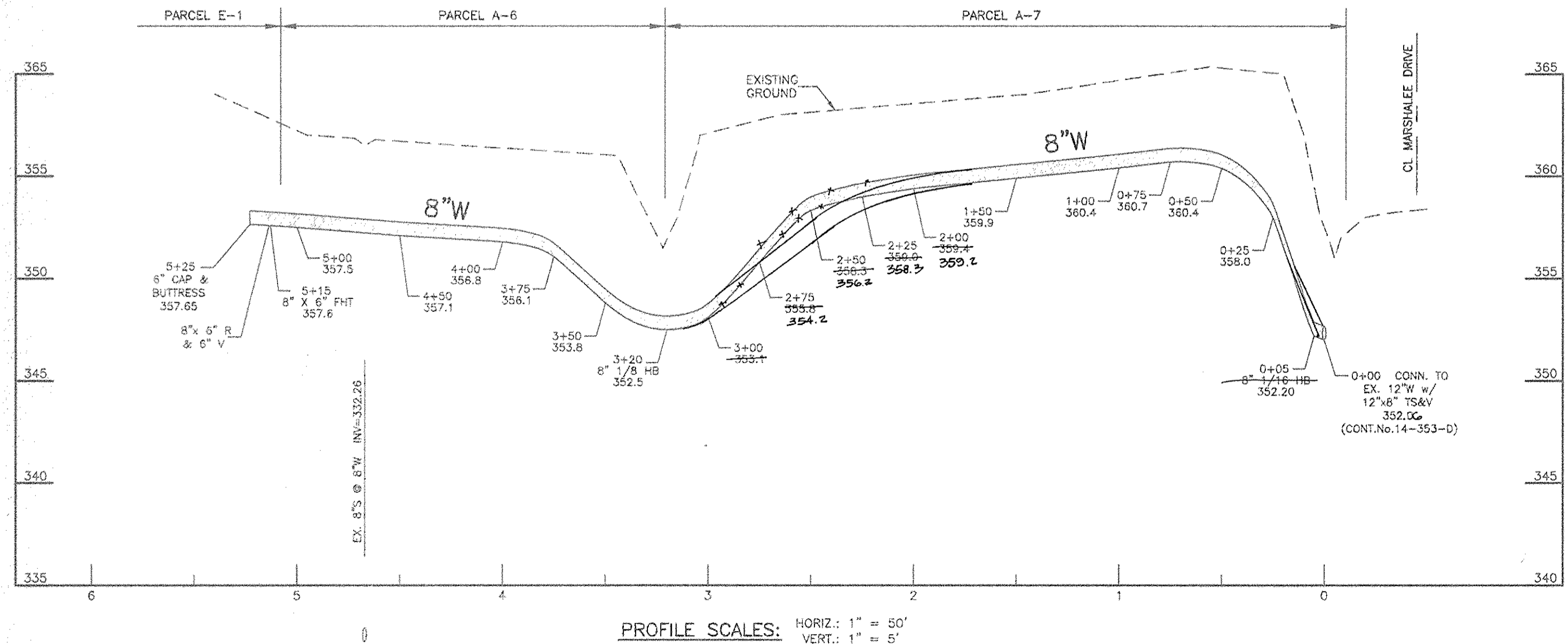
LYNDWOOD SQUARE
PARCELS A-7 AND E-1

1ST ELECTION DISTRICT
CONTRACT No. 14-3996-D

SCALE: AS SHOWN
SHEET 1 OF 2



PROFILE SCALES: HORIZ.: 1" = 50'
VERT.: 1" = 5'



PROFILE SCALES: HORIZ.: 1" = 50'
VERT.: 1" = 5'

DEPARTMENT OF PUBLIC WORKS
HOWARD COUNTY, MARYLAND
R.H. B...
4-9-02
CHIEF, BUREAU OF UTILITIES

DEPARTMENT OF PLANNING & ZONING
HOWARD COUNTY, MARYLAND
M.D. ...
4/20/02
CHIEF, DEVELOPMENT ENGINEERING DIVISION

CLARK • FINEFROCK & SACKETT, INC.
ENGINEERS • PLANNERS • SURVEYORS
7135 MINSTREL WAY COLUMBIA, MD 21045
(410) 381-7500 BALT. (301) 621-8100 WASH.



DES:	JTR			
DRN:	LAI			
CHK:	CCM			
DATE:	8-8-00			
BY:	K.C.I.	1	ASBUILT DATA ADDED TO PLAN	10/28/02
NO.			REVISION	DATE

WATER AND SEWER PLAN
AND PROFILES
600' SCALE MAP NO. 37 BLOCK NO. 10

LYNDWOOD SQUARE
PARCELS A-7 AND E-1
1ST ELECTION DISTRICT
CONTRACT No. 14-3996-D
SCALE: AS SHOWN
SHEET 2 OF 2

(#10) C:\DRAWING FILES\00034\E1-WS-SH2