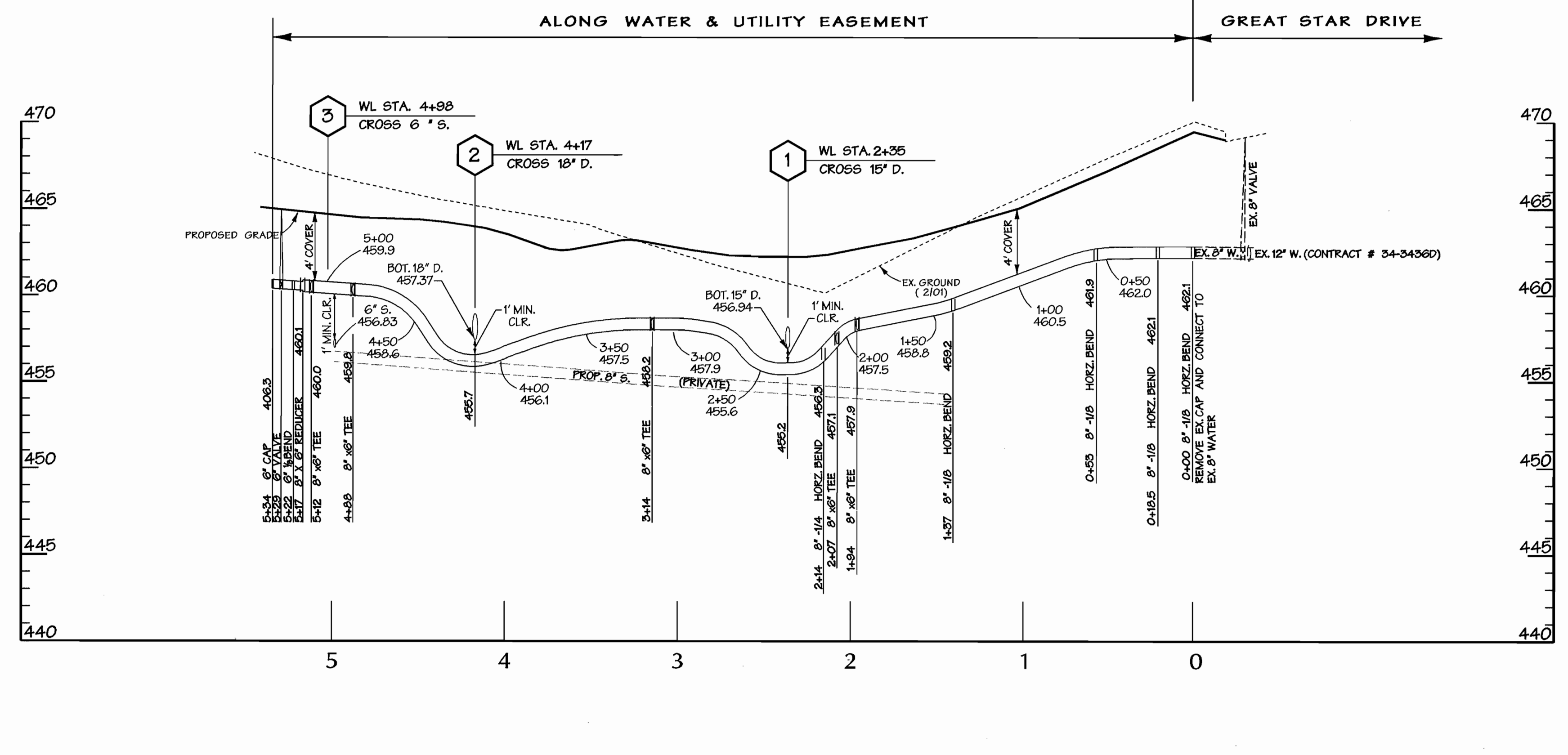
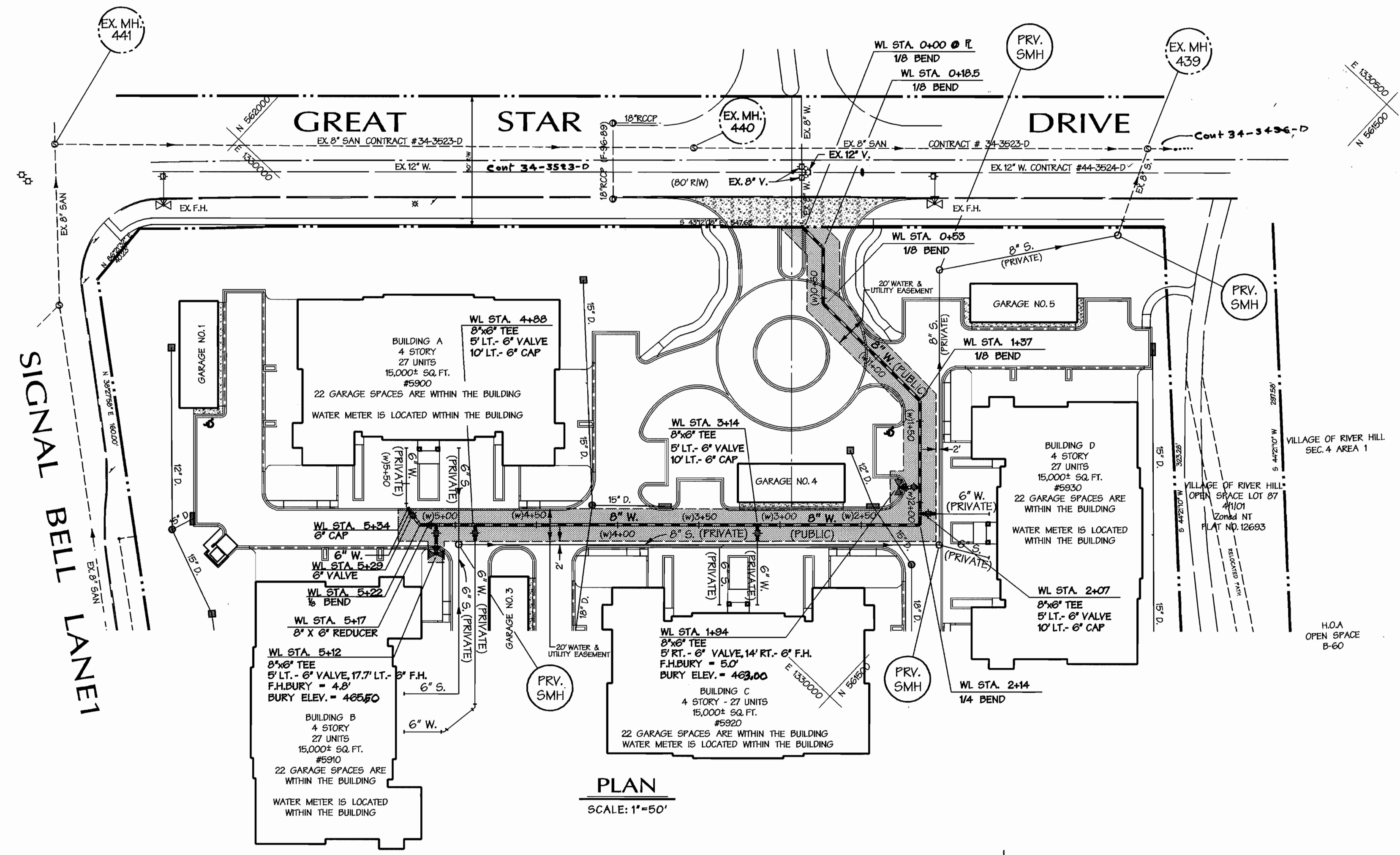




ITEMS	COORDINATES		STATION
	NORTH	EAST	
8" 1/8 BEND	561,710.7	1,330,198.8	0+00
8" 1/8 BEND	561,692.0	1,330,198.2	0+18.5
8" 1/8 BEND	561,668.5	1,330,173.2	0+53
8" 1/8 BEND	561,584.3	1,330,170.5	1+37
8" x 6" TEE	561,547.8	1,330,131.7	1+94
8" x 6" TEE	561,536.7	1,330,119.8	2+07
8" 1/4 BEND	561,531.9	1,330,114.7	2+14
8" x 6" TEE	561,604.7	1,330,046.2	3+14
8" x 6" TEE	561,731.3	1,329,927.0	4+88
8" x 6" TEE	561,748.8	1,329,910.6	5+12
8" x 6" REDUCER	561,752.5	1,329,907.2	5+17
6" 1/4 BEND	561,756.1	1,329,903.7	5+22
6" VALVE	561,763.3	1,329,905.0	5+29
6" CAP	561,768.3	1,329,906.0	5+34

CONTRACTOR TO TEST PIT TO DETERMINE ACTUAL LOCATION AND ELEVATION OF EXISTING 8" WATER PRIOR TO LAYING PIPE



DEPARTMENT OF PUBLIC WORKS  
HOWARD COUNTY, MARYLAND

*R. J. ...* 2-7-02  
CHIEF - BUREAU OF UTILITIES - DATE

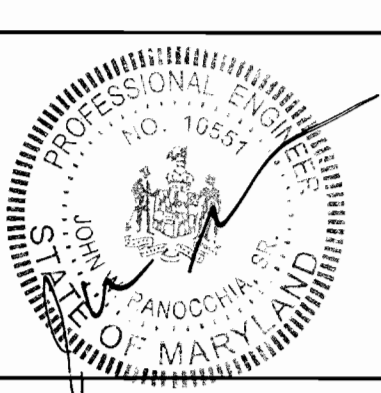
DEPARTMENT OF PLANNING & ZONING  
HOWARD COUNTY, MARYLAND

*...* 2/11/02  
CHIEF - DEVELOPMENT ENGINEERING DIVISION - DATE

**DMW**  
Daft-McCune-Walker, Inc.

A Team of Land Planners,  
Landscape Architects,  
Civil/Construction Architects,  
Engineers, Surveyors &  
Environmental Professionals

300 East Pennsylvania Avenue  
Towson, Maryland 21286  
(410) 296-3333  
Fax 296-4705



DESIGN BY:	DFM
DRAWN BY:	KDE
CHECKED BY:	
DATE:	11-20-01
BY NO.	
REVISION	
DATE	

**WATER PLAN & PROFILE**

600 SCALE MAP NO. 34 & 35 BLOCK NO. 6 & 12

COLUMBIA  
**FIELDSTONE AT PLEASANT RIDGE**  
VILLAGE OF RIVER HILL SECTION 4 AREA 1 PHASE 1 PARCEL B-1  
5th ELECTION DISTRICT  
Election District No. 5 Howard County, Maryland  
CONTRACT NO. 44-3989-D

SCALE:  
As Shown

SHEET  
**2 of 2**

Thu Jan 17 16:05:17 2002 n:\0005\000512.dwg

Thu Jan 17 16:05:17 2002 n:\0005\000512.dwg