

SHEET INDEX	
No.	DESCRIPTION
1	TITLE SHEET
2	PLAN AND PROFILE OF A WATER MAIN

WATER EXTENSION

ST. JOHN'S EPISCOPAL CHURCH

2nd ELECTION DISTRICT

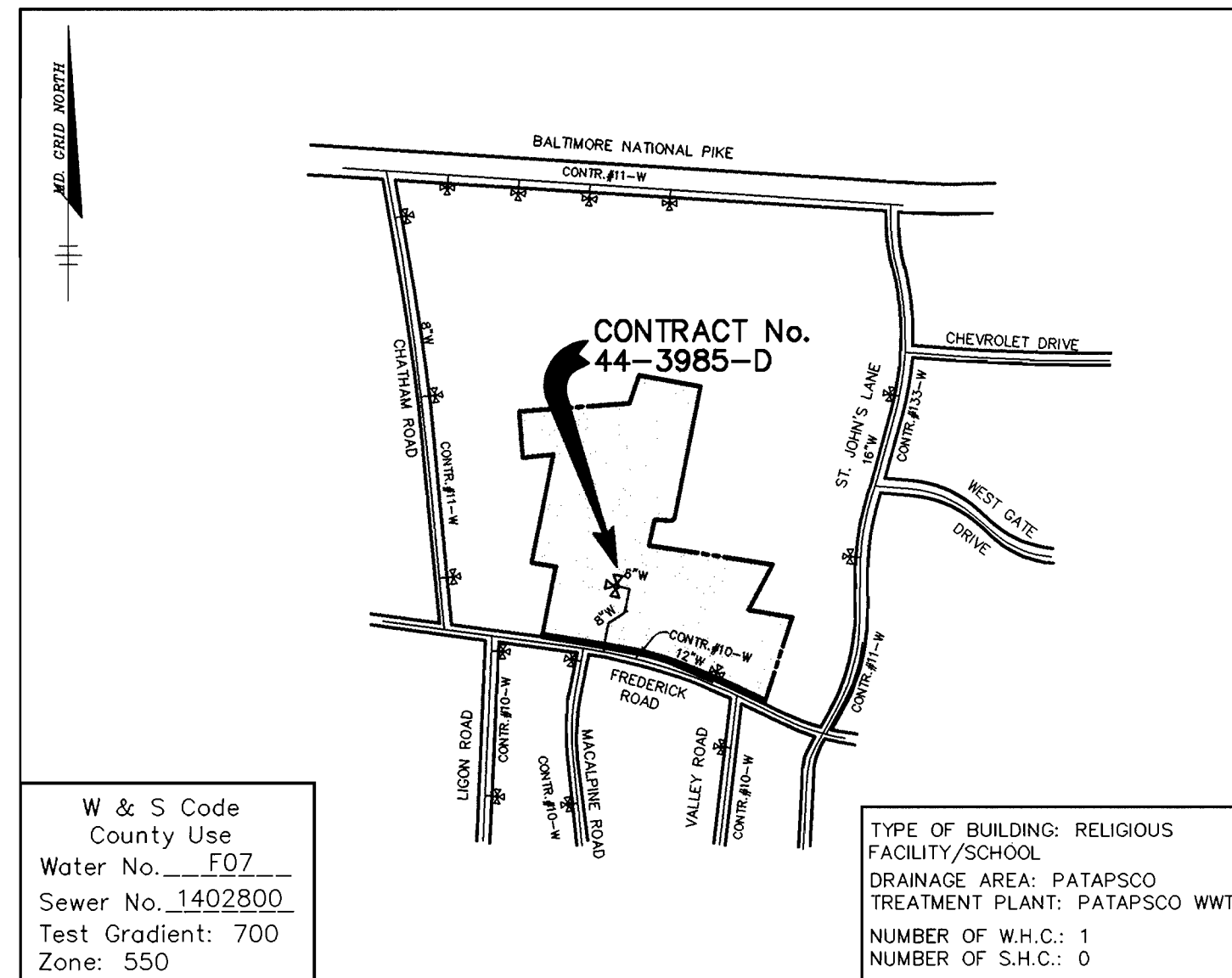
HOWARD COUNTY, MARYLAND

CONTRACT NO. 44-3985-D

GENERAL NOTES

- Approximate location of existing mains are shown. The contractor shall take all necessary precautions to protect existing mains and services and maintain uninterrupted supply. Any damage incurred shall be repaired immediately to the satisfaction of the Engineer at the Contractor's expense.
- All horizontal controls are based on Maryland State Coordinates.
- All vertical controls are based on U.S.G.S. data.
- All pipe elevations shown \odot are invert elevations.
- Clear all utilities by a minimum of 6". Clear all poles by 2'-0" minimum or tunnel as required. The owner has contacted the utility companies and has made arrangements for bracing of poles as shown on the drawings. In the event the contractor's work requires the bracing of additional poles, any cost incurred by the owner for bracing of additional poles or damages shall be deducted from money owed the contractor. The contractor shall coordinate with the utility companies to schedule the bracing of the poles.
- For details not shown on the drawings, and for materials and construction methods use Howard County Design Manual, Volume IV, Standard Specifications and Detail for Construction (Latest Edition). The contractor shall have a copy of Volume IV on the job.
- Where test pits have been made on existing utilities, they are noted by the symbol \oplus at the location of the test pit. A note on notes containing the results of the test pit or pits is included on the drawings. Existing utilities in the vicinity of the proposed work for which test pits have not been dug shall be located by the contractor two weeks in advance of construction operations at his own expense.
- Contractor shall notify the following utility companies or agencies at least five working days before starting work shown on these plans:

State Highway Administration	531-5533
Baltimore Gas & Electric Co. Contractor Services	850-4620
Baltimore Gas & Electric Co. Underground Damage Control	787-4068
Miss Utility	1-800-257-7777
Colonial Pipeline Co.	785-1340
Bureau of Utilities, Howard County Department of Public Works	313-4400
- Trees and shrubs are to be protected from damage to maximum extent. Trees and shrubs located within the construction strip are not to be removed or damaged by the contractor.
- Contractor shall remove trees, stumps and roots along line of excavation. Payment for such removal shall be included in the unit price bid for construction of the main.
- All water mains to be D.I.P. Class 52 unless otherwise noted.
- Tops of all water mains to have a minimum of 3'-1/2' cover unless otherwise noted.
- Valves adjacent to tees shall be strapped to tees.
- All fittings shall be buttressed or anchored with concrete in accordance with the Standard Details unless otherwise provided for on the drawings.
- Fire hydrants shall be set to the bury line elevations shown on the drawings. All fire hydrants shall be restrained and buttressed with concrete in accordance with Standard Details. Soil around the fire hydrant shall be compacted in accordance with Section 1000 and 1005 of the Standard Specifications.
- The contractor shall not operate any water main valves on the existing water system.
- All water house connections shall be for inside meter setting unless otherwise noted on plans or in specifications.
- Contractor is solely responsible for construction means, methods, techniques, sequences, procedures, and safety precautions and programs.
- The fire hydrant shall be installed as per standard detail M.1.1.1.
- Fire hydrants will be located 3' FROM BACK OF CURB unless otherwise noted.
- The contractor shall notify the Bureau of Highways, Howard County, at (410) 313-7450 at least five (5) working days before any open cut or any county road or boring/jacking operation in County roads for laying water/sewer mains or house connections. The approval of these drawings will constitute compliance with DFN requirements per Section 10.114(a) of the Howard County Code.



VICINITY MAP
SCALE: 1"=600'

QUANTITIES

ITEMS	QUANTITIES ESTIMATED	AS-BUILT		
		QUANTITIES	TYPE	MANUFACTURER / SUPPLIER
8" WATER	276 LF			
6" WATER	33 LF			
FIRE HYDRANTS	1 EA.			
6" VALVES	2 EA.			
12"x8" T, 54V	1 EA.			

NAME OF UTILITY CONTRACTOR :

Sediment control measures for this contract will be implemented in accordance with Section 219 of the Specifications and as shown on SDP-01-134

CHECKBOX	
AS-BUILT DATE	
SURVEY AND DRAFTING DIVISION	

Review for Howard Soil Conservation District and meets technical requirements.

Jim Myers 9/24/01
NATURAL RESOURCES CONSERVATION SERVICE DATE

This plan is approved for soil erosion and sediment control by the Howard Soil Conservation District.

John R. Roberts 9/24/01
HOWARD SOIL CONSERVATION DISTRICT DATE

DEPARTMENT OF PUBLIC WORKS HOWARD COUNTY, MARYLAND <i>Ralph Benjamin</i> 9-13-01 CHIEF, BUREAU OF UTILITIES DATE	DEPARTMENT OF PLANNING & ZONING HOWARD COUNTY, MARYLAND <i>Christopher J. Reid</i> 9/24/01 CHIEF, DEVELOPMENT ENGINEERING DIVISION DATE
---	--

RIEMER MUEGGE
a division of
Patton Harris Rust & Associates, pc
ENGINEERS • SURVEYORS • PLANNERS
LANDSCAPE ARCHITECTS • ENVIRONMENTAL SPECIALISTS
8918 Centre Park Drive, Columbia, MD 21046 • Tel: 410.297.2600 Fax: 410.297.2622
00286/WS1.dwg

STATE OF MARYLAND
CHRISTOPHER J. REID
REGISTERED PROFESSIONAL ENGINEER
No. 19949

DES: CJR					
DRN: MAD					
CHK: CJR					
DATE: 8/8/01	BY	NO.	REVISION	DATE	

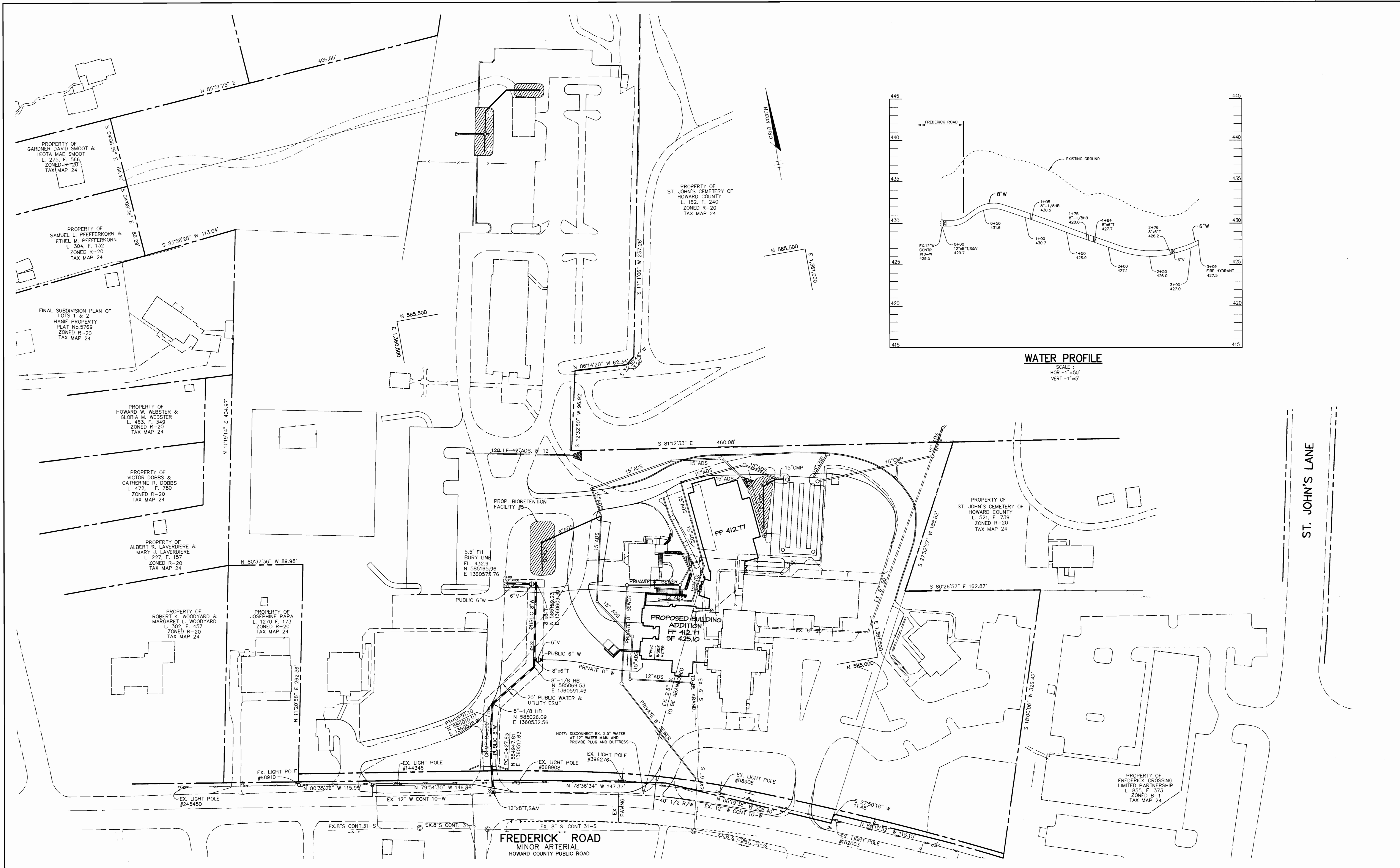
BENCHMARKS

HOWARD COUNTY SURVEY CONTROL STATION: 24 AA	
N 587380.601	E 1352603.657
HOWARD COUNTY SURVEY CONTROL STATION: 24 B5	
N 586956.212	E 1356570.816

TITLE SHEET
600' SCALE MAP NO. 24 BLOCK NO. 11

ST. JOHN'S EPISCOPAL CHURCH
2nd ELECTION DISTRICT
HOWARD COUNTY, MARYLAND
CONTRACT 44-3985-D

I:\project\00286\WS1.dwg Tue Aug 07 11:01:41 2001 Riemer Muegge, a division of PH&A



WATER PROFILE
 SCALE
 HOR. - 1"=50'
 VERT. - 1"=5'

DEPARTMENT OF PUBLIC WORKS
 HOWARD COUNTY, MARYLAND
 R. J. B...
 CHIEF, BUREAU OF UTILITIES
 9-13-01
 DATE

DEPARTMENT OF PLANNING & ZONING
 HOWARD COUNTY, MARYLAND
 M. J. ...
 CHIEF, DEVELOPMENT ENGINEERING DIVISION
 9/21/01
 DATE

RIEMER MUEGGE
 a dba of
 Patton Harris Rust & Associates, pc
 ENGINEERS • SURVEYORS • PLANNERS
 LANDSCAPE ARCHITECTS • ENVIRONMENTAL SPECIALISTS
 8210 Centre Park Drive, Columbia, MD 21046 • Tel: 410.997.2922 Fax: 410.997.2922
 00286/WS2.dwg



DES: CJR	BY	NO.	REVISION	DATE
DRN: MAD				
CHK: CJR				
DATE: 8/8/01				

PLAN AND PROFILE OF A WATER MAIN
 600' SCALE MAP NO. 24 BLOCK NO. 11

ST. JOHN'S EPISCOPAL CHURCH
 2nd ELECTION DISTRICT
 HOWARD COUNTY, MARYLAND
 CONTRACT 44-3985-D

SCALE
 1"=50'
 SHEET
 2 OF 2

D:\proj\00286\WS2.dwg Tue Aug 07 11:03:02 2001 Riemer Muegge, a division of PH&A

SHEET INDEX	
No.	DESCRIPTION
1	TITLE SHEET
2	PLAN AND PROFILE OF A WATER MAIN

WATER EXTENSION

ST. JOHN'S EPISCOPAL CHURCH

2nd ELECTION DISTRICT

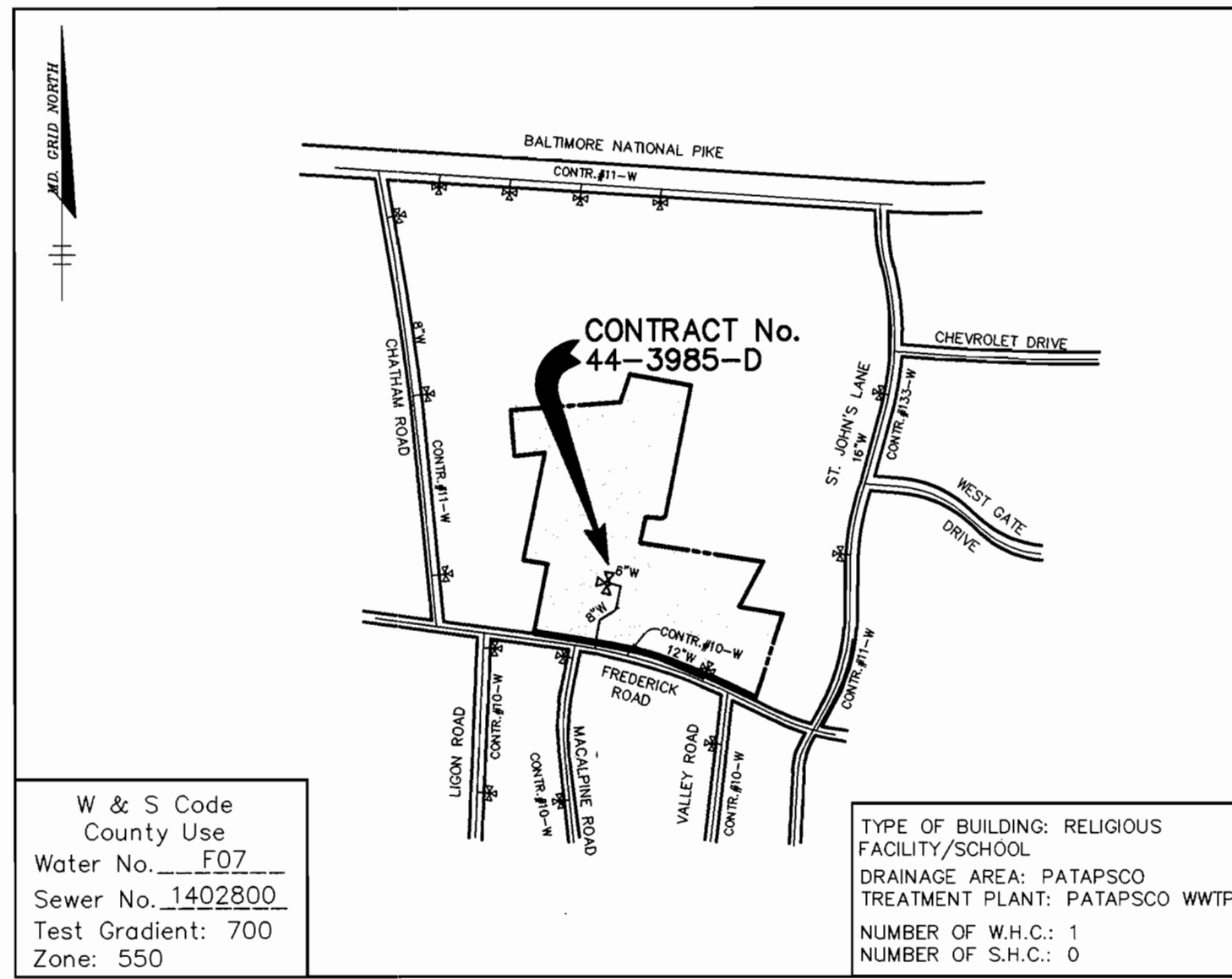
HOWARD COUNTY, MARYLAND

CONTRACT NO. 44-3985-D

GENERAL NOTES

- Approximate location of existing mains are shown. The contractor shall take all necessary precautions to protect existing mains and services and maintain uninterrupted supply. Any damage incurred shall be repaired immediately to the satisfaction of the Engineer at the Contractor's expense.
- All horizontal controls are based on Maryland State Coordinates.
- All vertical controls are based on U.S.G.S. data.
- All pipe elevations shown \curvearrowright are invert elevations.
- Clear all utilities by a minimum of 6". Clear all poles by 2'-0" minimum or tunnel as required. The owner has contacted the utility companies and has made arrangements for bracing of poles as shown on the drawings. In the event the contractor's work requires the bracing of additional poles, any cost incurred by the owner for bracing of additional poles or damages shall be deducted from money owed the contractor. The contractor shall coordinate with the utility companies to schedule the bracing of the poles.
- For details not shown on the drawings, and for materials and construction methods use Howard County Design Manual, Volume IV, Standard Specifications and Detail for Construction. (Latest Edition). The contractor shall have a copy of Volume IV on the job.
- Where test pits have been made on existing utilities, they are noted by the symbol \blacksquare at the location of the test pit. A note or notes containing the results of the test pit or pits is included on the drawings. Existing utilities in the vicinity of the proposed work for which test pits have not been dug shall be located by the contractor two weeks in advance of construction operations at his own expense.
- Contractor shall notify the following utility companies or agencies at least five working days before starting work shown on these plans:

State Highway Administration	531-5533
Baltimore Gas & Electric Co. Contractor Services	850-4620
Baltimore Gas & Electric Co. Underground Damage Control	781-4069
Miss Utility	1-800-257-1111
Colonial Pipeline Co.	745-1340
Bureau of Utilities, Howard County Department of Public Works	313-4400
- Trees and shrubs are to be protected from damage to maximum extent. Trees and shrubs located within the construction strip are not to be removed or damaged by the contractor.
- Contractor shall remove trees, stumps and roots along line of excavation. Payment for such removal shall be included in the unit price bid for construction of the main.
- All water mains to be D.I.P. Class 52 unless otherwise noted.
- Taps of all water mains to have a minimum of 3-1/2' cover unless otherwise noted.
- Valves adjacent to tees shall be strapped to tees.
- All fittings shall be buttressed or anchored with concrete in accordance with the Standard Details unless otherwise provided for on the drawings.
- Fire hydrants shall be set to the bury line elevations shown on the drawings. All fire hydrants shall be restrained and buttressed with concrete in accordance with Standard Details. Soil around the fire hydrant shall be compacted in accordance with Section 1000 and 1005 of the Standard Specifications.
- The contractor shall not operate any water main valves on the existing water system.
- All water house connections shall be for inside meter setting unless otherwise noted on plans or in specifications.
- Contractor is solely responsible for construction means, methods, techniques, sequences, procedures, and safety precautions and programs.
- The fire hydrant shall be installed as per standard detail R.1.11.
- Fire hydrants will be located 3' FROM BACK OF CURB unless otherwise noted.
- The contractor shall notify the Bureau of Highways, Howard County, at (410) 313-7450 at least five (5) working days before any open cut of any County road or boring/jacking operation in County roads for laying water/sewer mains or house connections. The approval of these drawings will constitute compliance with DPM requirements per Section 10.11(a) of the Howard County Code.



VICINITY MAP
SCALE: 1"=600'

QUANTITIES

ITEMS	QUANTITIES ESTIMATED	AS-BUILT		
		QUANTITIES	TYPE	MANUFACTURER / SUPPLIER
8" WATER	276 LF			
6" WATER	33 LF			
FIRE HYDRANTS	1 EA.			
6" VALVES	2 EA.			
12"x8" T, 54V	1 EA.			
\triangle 1/2" WATER	10 LF			
\triangle 1" WATER VAULT	1 EA.			

NAME OF UTILITY CONTRACTOR: _____

Sediment control measures for this contract will be implemented in accordance with Section 219 of the Specifications and as shown on SDP-01-134

CHECKBOX: AS-BUILT DATE: _____ SURVEY AND DRAFTING DIVISION

Review for Howard Soil Conservation District and meets technical requirements.

Jim Myers 9/24/01
NATURAL RESOURCE CONSERVATION SERVICE DATE

This plan is approved for soil erosion and sediment control by the Howard Soil Conservation District.

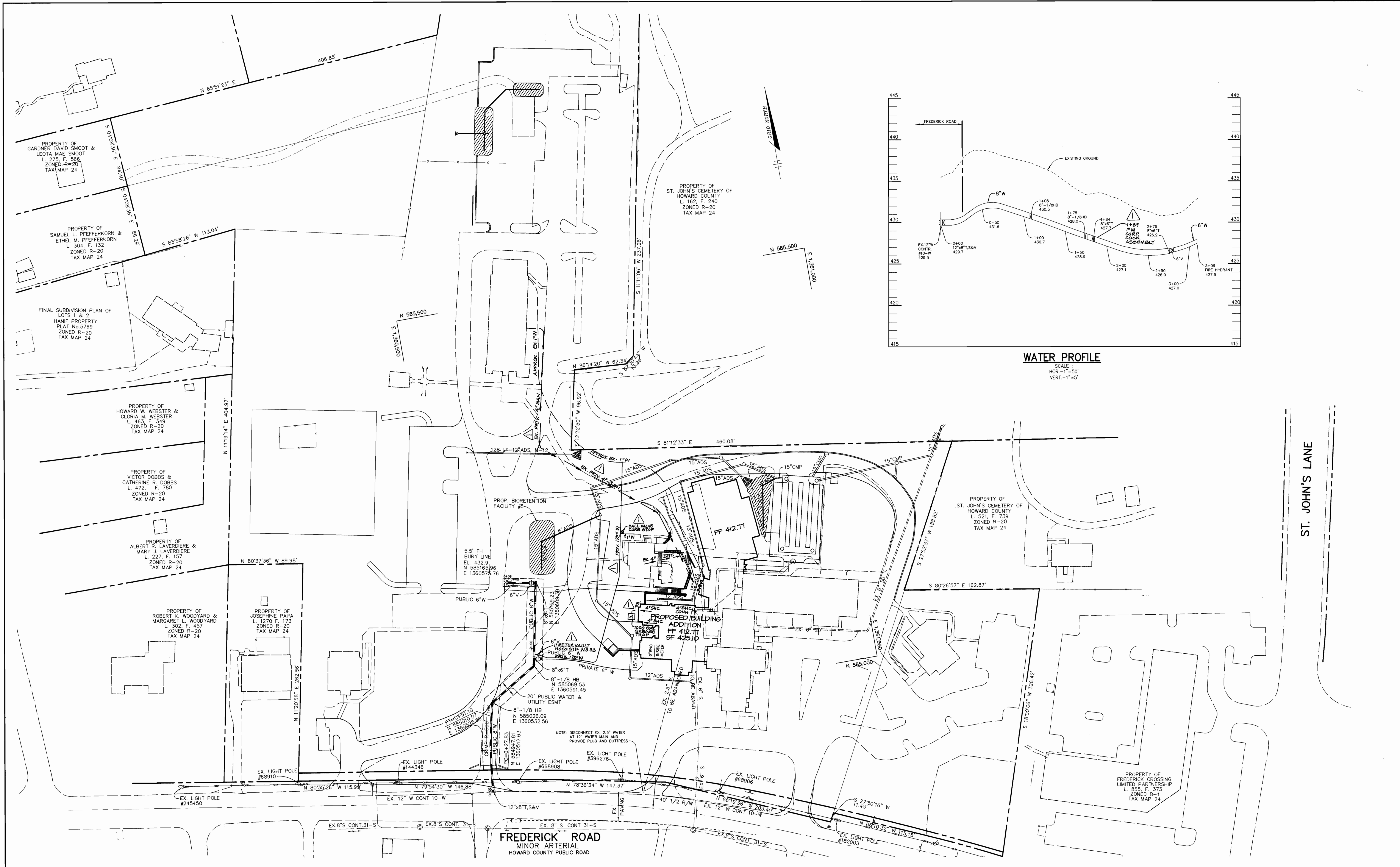
John R. Robertson 9/24/01
HOWARD SOIL CONSERVATION DISTRICT DATE

BENCHMARKS

HOWARD COUNTY SURVEY CONTROL STATION: 24 AA
N 587380.601 E 1352603.657

HOWARD COUNTY SURVEY CONTROL STATION: 24 B5
N 586956.212 E 1356570.816

DEPARTMENT OF PUBLIC WORKS HOWARD COUNTY, MARYLAND <i>Ruth Beaman</i> 9-13-01 CHIEF, BUREAU OF UTILITIES DATE	DEPARTMENT OF PLANNING & ZONING HOWARD COUNTY, MARYLAND <i>Christopher J. Reid</i> 9/24/01 CHIEF, DEVELOPMENT ENGINEERING DIVISION DATE	RIEMER MUEGGE a division of Patton Harris Rust & Associates, PC ENGINEERS • SURVEYORS • PLANNERS LANDSCAPE ARCHITECTS • ENVIRONMENTAL SPECIALISTS 8818 Centre Park Drive, Columbia, MD 21046 • tel 410.287.2800 fax 410.287.2802 00286/WS1.dwg CHRISTOPHER J. REID #19949	DES: CJR DRN: MAD CHK: CJR DATE: 8/8/01	BY NO. REVISION DATE CJR \triangle MODIFIED QUANTITIES 3-21-02 BY NO. REVISION DATE	TITLE SHEET 600' SCALE MAP NO. 24 BLOCK NO. 11	ST. JOHN'S EPISCOPAL CHURCH 2nd ELECTION DISTRICT HOWARD COUNTY, MARYLAND CONTRACT 44-3985-D	SCALE AS SHOWN SHEET 1 OF 2
--	--	--	--	---	--	--	------------------------------------



DEPARTMENT OF PUBLIC WORKS
HOWARD COUNTY, MARYLAND

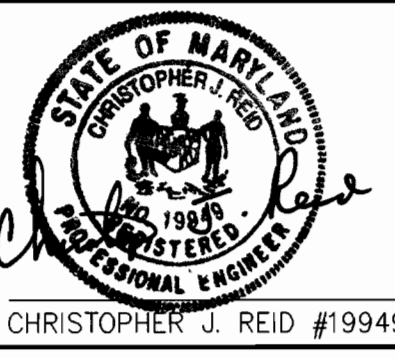
John B. ...
CHIEF, BUREAU OF UTILITIES
9-13-01 DATE

DEPARTMENT OF PLANNING & ZONING
HOWARD COUNTY, MARYLAND

Christopher J. Reid
CHIEF, DEVELOPMENT ENGINEERING DIVISION
9/24/01 DATE

RIEMER MUEGGE
Patton Harris Rust & Associates, pc
ENGINEERS • SURVEYORS • PLANNERS
LANDSCAPE ARCHITECTS • ENVIRONMENTAL SPECIALISTS
8918 Curtis Park Drive, Columbia, MD 21046 • TEL: 410-997-8900 FAX: 410-997-8922

00286/WS2.dwg



DES: CJR			
DRN: MAD			
CHK: CJR			
DATE: 8/8/01			
BY: CJR	ADDED 1" WATER & INDICATED EX. UTILITIES	3-21-02	
NO.	REVISION	DATE	

**PLAN AND PROFILE
OF A WATER MAIN**

600' SCALE MAP NO. 24 BLOCK NO. 11

ST. JOHN'S EPISCOPAL CHURCH
2nd ELECTION DISTRICT
HOWARD COUNTY, MARYLAND
CONTRACT 44-3985-D

SCALE
1"=50'

SHEET
2 OF 2