

QUANTITIES			
ITEMS	QUANTITIES ESTIMATED	AS-BUILT	
		QUANTITIES	MANUFACTURER/SUPPLIER
8" PVC SEWER	846 L.F.		
6" PVC SEWER	20 L.F.		
4" PVC SHC	24 L.F.		
4" STOPPER	3		
6" STOPPER	1		
8" STOPPER	1		
MANHOLES	4		
12" D.I. WATER	992 L.F.		
6" D.I. WATER	15 L.F.		
12"x12" T	1		
12" V	5		
12" 1/8 HB	3		
12" 1/16 HB	1		
12" CAP	1		
12"x6" FHT	2		
6" V (FH)	2		
5.5' FH	1		
5.0' FH	1		
2" WHC	50 L.F.		

NAME OF UTILITY CONTRACTOR: _____

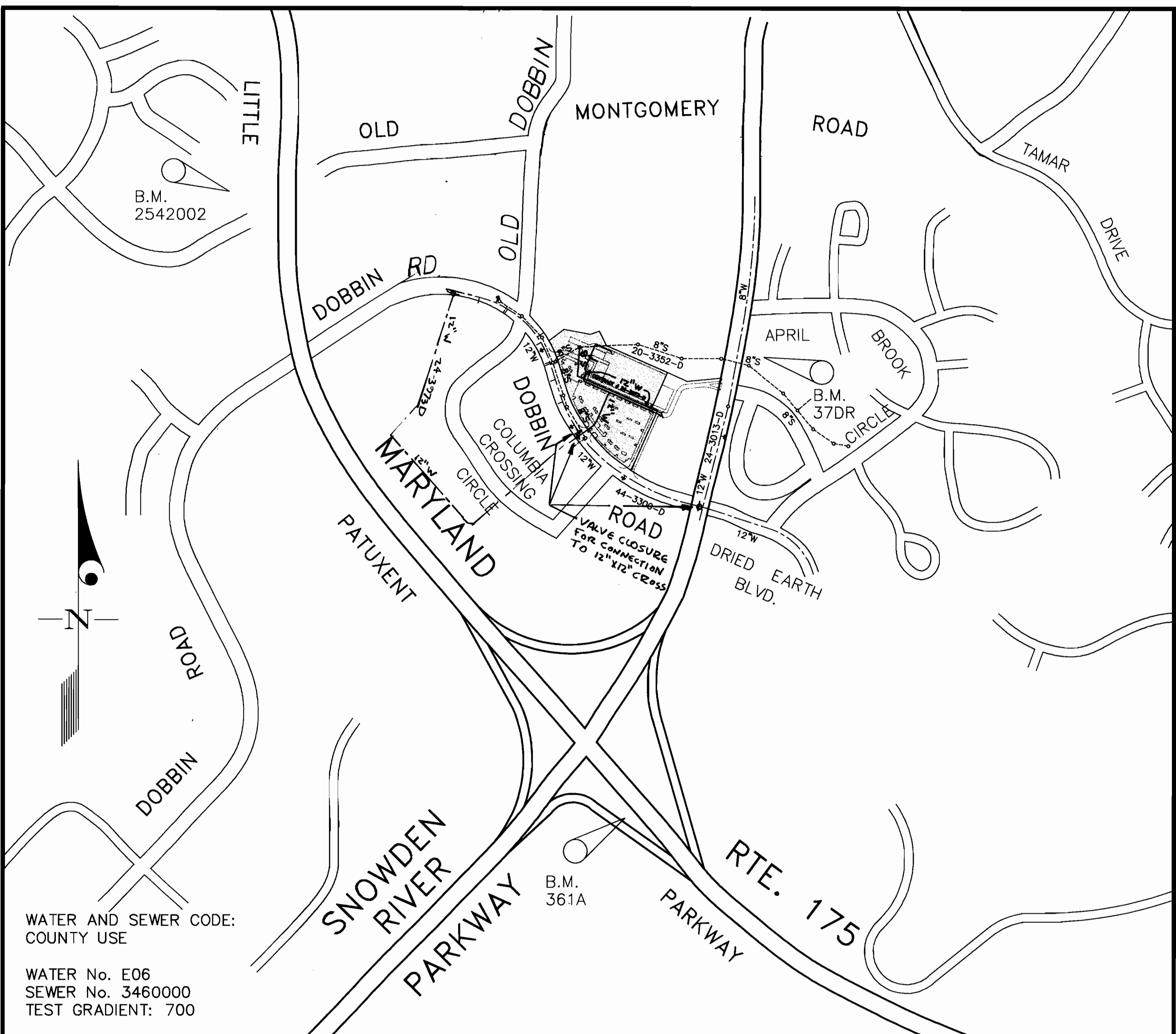
SURVEY AND DRAFTING DIV. CHECKBOX: _____ AS-BUILT DATE: _____

BENCH MARK DESCRIPTIONS

STATION 2542002 (CONCRETE MONUMENT)
ELEV. = 363.638 For vertical control only.

STATION 37DR (1/4" REBAR)
N 169881.1794, E 416566.7155 For horizontal control only.

STATION 361A (CONCRETE MONUMENT)
N 169205.9263, E 416313.5119 For horizontal control only.



VICINITY MAP
SCALE: 1"=600'

TYPE OF BUILDING	RETAIL
NUMBER OF UNITS	N/A
NUMBER OF S.H.C.'s	3
NUMBER OF W.H.C.'s	2
DRAINAGE AREA	DORSEY RUN
TREATMENT PLANT	LITTLE PATUXENT WATER RECLAMATION PLANT

GENERAL NOTES

- PART I**
- Approximate location of existing mains are shown. The contractor shall take all necessary precautions to protect existing mains and services and maintain uninterrupted supply. Any damage incurred shall be repaired immediately to the satisfaction of the Engineer at the Contractor's expense.
 - All horizontal controls are based on Maryland State Coordinates [North American Datum 1983 (NAD '83)].
 - All vertical controls are based on U.S.G.S. data.
 - All pipe elevations shown are invert elevations.
 - Clear all utilities by a minimum of 8". Clear all poles by 2'-0" minimum or tunnel as required. The owner has contacted the utility companies and has made arrangements for bracing of poles as shown on the drawings. In the event the contractor's work requires the bracing of additional poles, any cost incurred by the owner for bracing of additional poles or damages shall be deducted from money owed the contractor. The contractor shall coordinate with the utility companies to schedule the bracing of the poles.
 - For details not shown on the drawings, and for materials and construction methods use Howard County Design Manual, Volume IV, Standard Specifications and Detail for Construction (Latest Edition). The contractor shall have a copy of Volume IV on the job.
 - Where test pits have been made on existing utilities, they are noted by the symbol at the location of the test pit. A note or notes containing the results of the test pit or pits is included on the drawings. Existing utilities in the vicinity of the proposed work for which test pits have not been dug shall be located by the contractor two weeks in advance of construction operations at his own expense.
 - Contractor shall notify the following utility companies or agencies at least (5) working days before starting work shown on these plans:
 - State Highway Administration 531-5533
 - BGE Contractor Services 850-4620
 - BGE Under Ground Damage Control 787-9068
 - Miss Utility 1-800-257-7777
 - Colonial Pipeline Co. 795-1390
 - Howard County Department of Public Works Bureau of Utilities 313-4900
 - Trees and shrubs are to be protected from damage to maximum extent. Trees and shrubs located within the construction strip are not to be removed or damaged by the contractor.
 - Contractor shall remove trees, stumps and roots along line of excavation. Payment for such removal shall be included in the unit price bid for construction of the main.
 - The contractor shall notify the Bureau of Highways, Howard County, at (410) 313-2450 at least five (5) working days before any open cut of any County road or boring/jacking operation on County roads for laying water/sewer mains or house connections. The approval of these drawings will constitute compliance with DPW requirement per Section 18.114(a) of the Howard County Code.
- PART II - WATER**
- All water mains to be D.I.P. Class 52 unless otherwise noted.
 - Tops of all water mains to have a minimum of 3-1/2' cover unless otherwise noted.
 - Valves adjacent to tees shall be strapped to tees.
 - All fittings shall be buttressed or anchored with concrete in accordance with the Standard Details unless otherwise provided for on the drawings.
 - Fire hydrants shall be set to the bury line elevations shown on the drawings. All fire hydrants shall be restrained and buttressed with concrete in accordance with the Standard Details. Soil around the fire hydrant shall be compacted in accordance with Section 1000 and 1005 of the Standard Specifications.
 - The contractor shall not operate any water main valves on the existing water system.
 - All water house connections shall be for inside meter setting unless otherwise noted on plans or in specifications.
 - For sprinkler system for all townhomes or multi-family dwelling units should have a minimum of 1" connection with a 3/4" meter.
- PART III - SEWER**
- All sewer mains shall be DIP and P.V.C. unless otherwise noted.
 - All manholes shall be 4' - 0" inside diameter unless otherwise noted.
 - Force mains shall be D.I.P. only.
 - Manholes shown with 12" and 16" walls are for brick manholes only. Manholes designated W.T. in plan and profile shall have watertight frame and covers, Standard Detail C5.52. Where watertight frame and cover is used, set top of frame 1'-6" above finished grade unless otherwise noted on drawings.
 - House(s) with the symbol "C.N.S." indicates that cellar cannot be served.

CONTRACT No. 24-3973-D
EXPO DESIGN CENTER
LIBER 4118 FOLIO 16
HOWARD COUNTY, MARYLAND
DEPARTMENT OF PUBLIC WORKS

Sediment Control Measures will be implemented in accordance with Section 219 of the Specifications & with Site Development Plan SDP-01-132 for Sediment & Erosion Control.

REVIEWED FOR HOWARD SOIL CONSERVATION DISTRICT AND MEETS TECHNICAL REQUIREMENT.

John P. Robertson 8/16/01
SIGNATURE DATE
U.S.D.A. NATURAL RESOURCES CONSERVATION SERVICE

THIS DEVELOPMENT PLAN IS APPROVED FOR SOIL EROSION AND SEDIMENT CONTROL BY THE HOWARD SOIL CONSERVATION DISTRICT.

APPROVED: *John P. Robertson* 8/16/01
HOWARD S.C.D. DATE

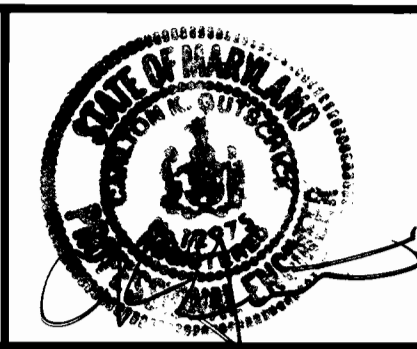
DEPARTMENT OF PUBLIC WORKS
HOWARD COUNTY, MARYLAND

Robert B. Reinger 7-26-01
CHIEF, BUREAU OF UTILITIES DATE

DEPARTMENT OF PLANNING AND ZONING
HOWARD COUNTY, MARYLAND

John P. Robertson 8/16/01
CHIEF, DEVELOPMENT ENGINEERING DIVISION DATE

GLW GUTSCHICK LITTLE & WEBER, P.A.
CIVIL ENGINEERS, LAND SURVEYORS, LAND PLANNERS, LANDSCAPE ARCHITECTS
3909 NATIONAL DRIVE - SUITE 250 - BURTONSVILLE OFFICE PARK
BURTONSVILLE, MARYLAND 20866
TEL: 301-421-4024 BAL: 410-880-1820 DC/VA: 301-989-2524 FAX: 301-421-4186



DES: _____				
DRN: WLB				
CHK: TMR				
DATE: 6/01				
BY: NO		REVISION		DATE

TITLE SHEET
SCALE: AS SHOWN

600' SCALE MAP NO. 36 & 37, BLOCK NO. _____

ROUTE 175 COMMERCIAL
CONTRACT # 24-3973-D
PARCELS 'C-1' THRU 'C-3'
SECTION 1, AREA 2
LIBER 4118, F16

WEST FRIENDSHIP ELECTION DISTRICT No. 6
HOWARD COUNTY, MARYLAND

GLW FILE No. 01014

SCALE AS SHOWN

SHEET 1 OF 3

D:\Projects\24-3973-D\24-3973-D.dwg 7/20/01 4:28:44 pm LST

QUANTITIES		AS-BUILT		
ITEMS	QUANTITIES ESTIMATED	QUANTITIES	TYPE	MANUFACTURER/SUPPLIER
8" PVC SEWER	846 L.F.			
6" PVC SEWER	20 L.F.			
4" PVC SHC	24 L.F.			
4" STOPPER	3			
6" STOPPER	1			
8" STOPPER	1			
MANHOLES	4			
12" D.I. WATER	992 L.F.			
6" D.I. WATER	15 L.F.			
12"x12" T	1			
12" V	5			
12" 1/8 HB	3			
12" 1/16 HB	1			
12" CAP	1			
12"x6" FHT	2			
6" V (FH)	2			
6.5' FH	1			
5.0' FH	1			
2" WHC	25 L.F.			
4" WHC	25 L.F.			
12" x 4" TEE	1			
4" V	1			

NAME OF UTILITY CONTRACTOR: _____

SURVEY AND DRAFTING DIV. CHECKBOX: _____ AS-BUILT DATE: _____

BENCH MARK DESCRIPTIONS

STATION 2542002 (CONCRETE MONUMENT)
ELEV. = 363.638 For vertical control only.

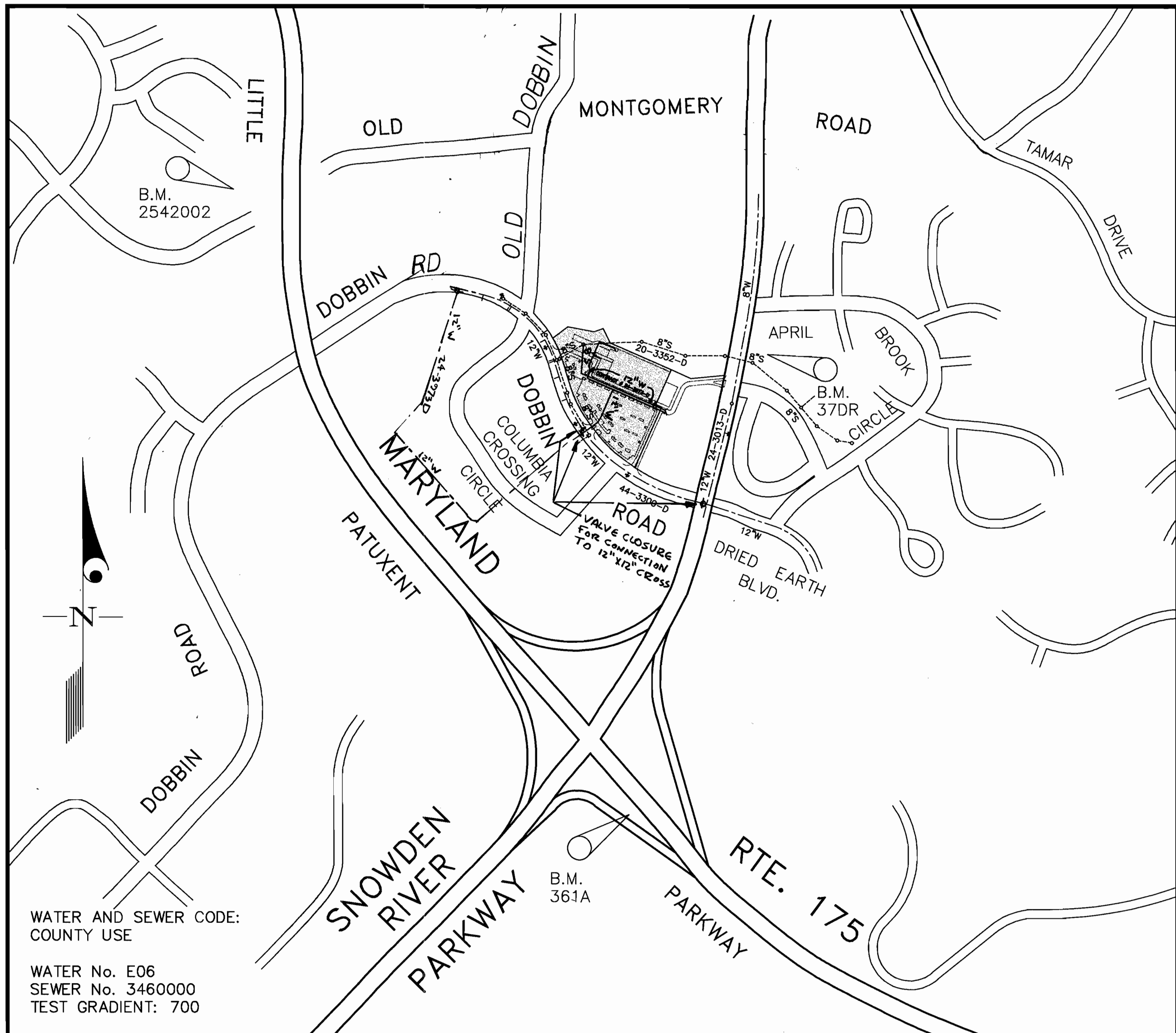
STATION 37DR (1/4" REBAR)
N 169881.1794, E 416566.7155 For horizontal control only.

STATION 361A (CONCRETE MONUMENT)
N 169205.9263, E 416313.5119 For horizontal control only.

Station is located 1000' +/- west of Rte. 175 on transmission line at G&E tower 19-E near Hanovers Restaurant entrance.

Station is located 0.45' +/- miles north of Rte. 175 and 76' +/- east of the east curb of Snowden River Parkway.

Station is located at the southeast corner of the intersection of Snowden River Parkway and Rte. 175 3' +/- from curb and 5.7' +/- from end of guard rail.



VICINITY MAP
SCALE: 1"=600'

TYPE OF BUILDING	RETAIL
NUMBER OF UNITS	N/A
NUMBER OF S.H.C.'s	3
NUMBER OF W.H.C.'s	2
DRAINAGE AREA	DORSEY RUN
TREATMENT PLANT	LITTLE PATUXENT WATER RECLAMATION PLANT

GENERAL NOTES

- PART I**
- Approximate location of existing mains are shown. The contractor shall take all necessary precautions to protect existing mains and services and maintain uninterrupted supply. Any damage incurred shall be repaired immediately to the satisfaction of the Engineer at the Contractor's expense.
 - All horizontal controls are based on Maryland State Coordinates [North American Datum 1983 (NAD '83)].
 - All vertical controls are based on U.S.G.S. data.
 - All pipe elevations shown are invert elevations.
 - Clear all utilities by a minimum of 8". Clear all poles by 2'-0" minimum or tunnel as required. The owner has contacted the utility companies and has made arrangements for bracing of poles as shown on the drawings. In the event the contractor's work requires the bracing of additional poles, any cost incurred by the owner for bracing of additional poles or damages shall be deducted from money owed the contractor. The contractor shall coordinate with the utility companies to schedule the bracing of the poles.
 - For details not shown on the drawings, and for materials and construction methods use Howard County Design Manual, Volume IV, Standard Specifications and Detail for Construction (Latest Edition). The contractor shall have a copy of Volume IV on the job.
 - Where test pits have been made on existing utilities, they are noted by the symbol at the location of the test pit. A note or notes containing the results of the test pit or pits is included on the drawings. Existing utilities in the vicinity of the proposed work for which test pits have not been dug shall be located by the contractor two weeks in advance of construction operations at his own expense.
 - Contractor shall notify the following utility companies or agencies at least (5) working days before starting work shown on these plans:
 - State Highway Administration 531-5533
 - BGE Contractor Services 850-4620
 - BGE Under Ground Damage Control 787-9068
 - Miss Utility 1-800-257-7777
 - Colonial Pipeline Co. 795-1390
 - Howard County Department of Public Works Bureau of Utilities 313-4900
 - Trees and shrubs are to be protected from damage to maximum extent. Trees and shrubs located within the construction strip are not to be removed or damaged by the contractor.
 - Contractor shall remove trees, stumps and roots along line of excavation. Payment for such removal shall be included in the unit price bid for construction of the main.
 - The contractor shall notify the Bureau of Highways, Howard County, at (410) 313-2450 at least five (5) working days before any open cut of any County road or boring/jacking operation on County roads for laying water/sewer mains or house connections. The approval of these drawings will constitute compliance with DPW requirement per Section 18.114(a) of the Howard County Code.
- PART II - WATER**
- All water mains to be D.I.P. Class 52 unless otherwise noted.
 - Tops of all water mains to have a minimum of 3'-1/2' cover unless otherwise noted.
 - Valves adjacent to tees shall be strapped to tees.
 - All fittings shall be buttressed or anchored with concrete in accordance with the Standard Details unless otherwise provided for on the drawings.
 - Fire hydrants shall be set to the bury line elevations shown on the drawings. All fire hydrants shall be restrained and buttressed with concrete in accordance with the Standard Details. Soil around the fire hydrant shall be compacted in accordance with Section 1000 and 1005 of the Standard Specifications.
 - The contractor shall not operate any water main valves on the existing water system.
 - All water house connections shall be for inside meter dwelling unless otherwise noted on plans or in specifications.
 - For sprinkler system for all townhomes or multi-family dwelling units should have a minimum of 1' connection with a 3/4" meter.
- PART III - SEWER**
- All sewer mains shall be DIP and P.V.C. unless otherwise noted.
 - All manholes shall be 4' -0" inside diameter unless otherwise noted.
 - Force mains shall be D.I.P. only.
 - Manholes shown with 12" and 16" walls are for brick manholes only.
 - Manholes designated W.T. in plan and profile shall have watertight frame and covers, Standard Detail G5.52. Where watertight frame and cover is used, set top of frame 1'-6" above finished grade unless otherwise noted on drawings.
 - House(s) with the symbol "C.N.S." indicates that cellar cannot be served.

CONTRACT No. 24-3973-D
EXPO DESIGN CENTER
LIBER 4118 FOLIO 16
HOWARD COUNTY, MARYLAND
DEPARTMENT OF PUBLIC WORKS

Sediment Control Measures will be implemented in accordance with Section 219 of the Specifications & with Site Development Plan SDP-01-132 for Sediment & Erosion Control.

REVIEWED FOR HOWARD SOIL CONSERVATION DISTRICT AND MEETS TECHNICAL REQUIREMENT.

John P. Reardon 8/11/01
SIGNATURE DATE
U.S.D.A. NATURAL RESOURCES CONSERVATION SERVICE

THIS DEVELOPMENT PLAN IS APPROVED FOR SOIL EROSION AND SEDIMENT CONTROL BY THE HOWARD SOIL CONSERVATION DISTRICT.

APPROVED: *John P. Reardon* 8/11/01
HOWARD S.C.D. DATE

DEPARTMENT OF PUBLIC WORKS
HOWARD COUNTY, MARYLAND

John P. Reardon 7-26-01
CHIEF, BUREAU OF UTILITIES DATE

DEPARTMENT OF PLANNING AND ZONING
HOWARD COUNTY, MARYLAND

John P. Reardon 8/11/01
CHIEF, DEVELOPMENT ENGINEERING DIVISION DATE

GLW GUTSCHICK LITTLE & WEBER, P.A.
CIVIL ENGINEERS, LAND SURVEYORS, LAND PLANNERS, LANDSCAPE ARCHITECTS
3809 NATIONAL DRIVE - SUITE 250 - BURTONSVILLE OFFICE PARK
BURTONSVILLE, MARYLAND 20866
TEL: 301-421-4024 BALT: 410-880-1820 DC/VA: 301-989-2524 FAX: 301-421-4186



DES:	
DRN:	WLB
CHK:	TMR
DATE:	6/01
BY:	
NO:	
REVISION:	
DATE:	

TITLE SHEET
SCALE: AS SHOWN

600' SCALE MAP NO. 36 & 37, BLOCK NO. _____

ROUTE 175 COMMERCIAL
CONTRACT # 24-3973-D
PARCELS 'C-1' THRU 'C-3'
SECTION 1, AREA 2
L4118, F16

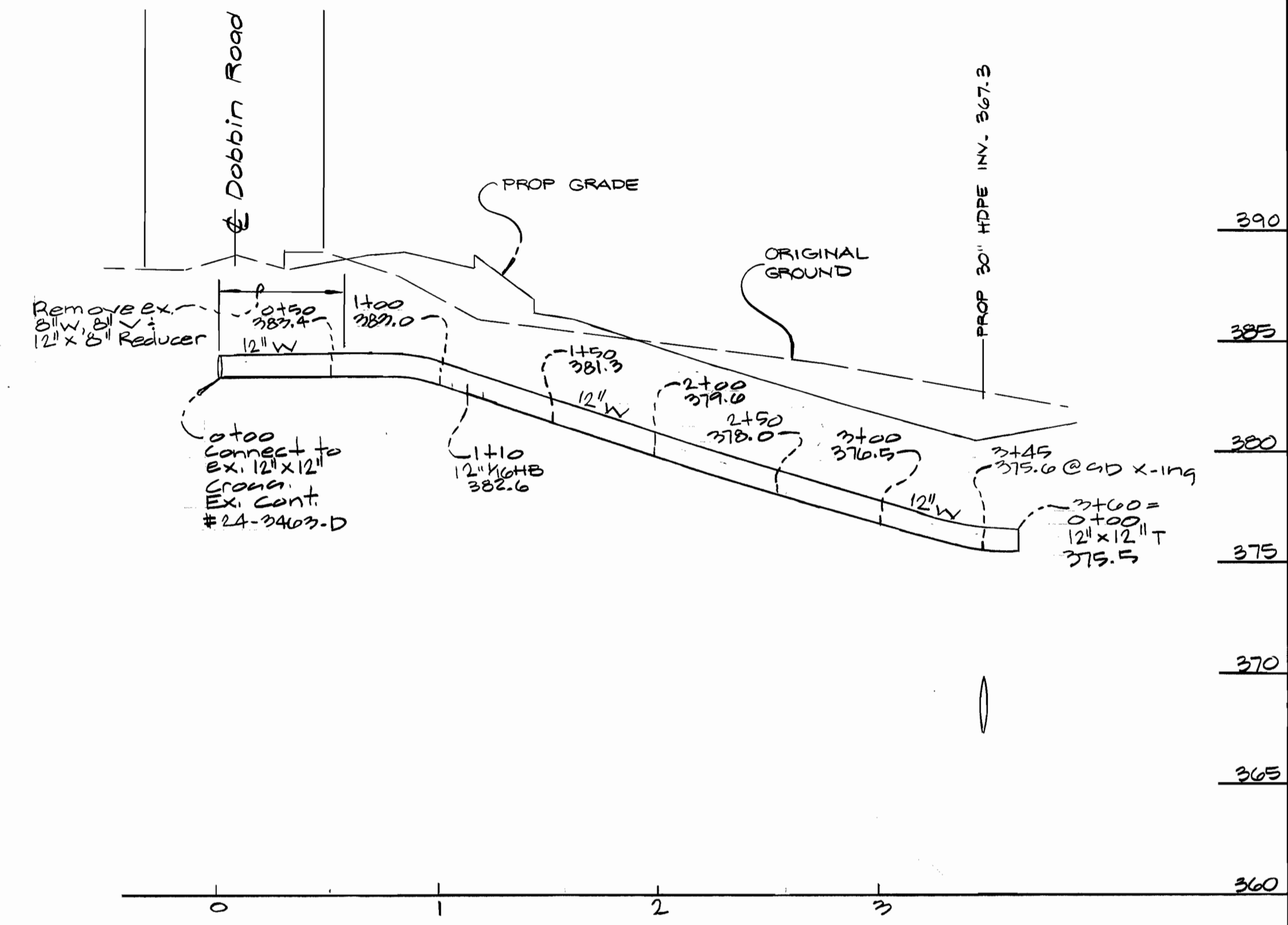
WEST FRIENDSHIP ELECTION DISTRICT No. 6 HOWARD COUNTY, MARYLAND

GLW FILE No. 01014

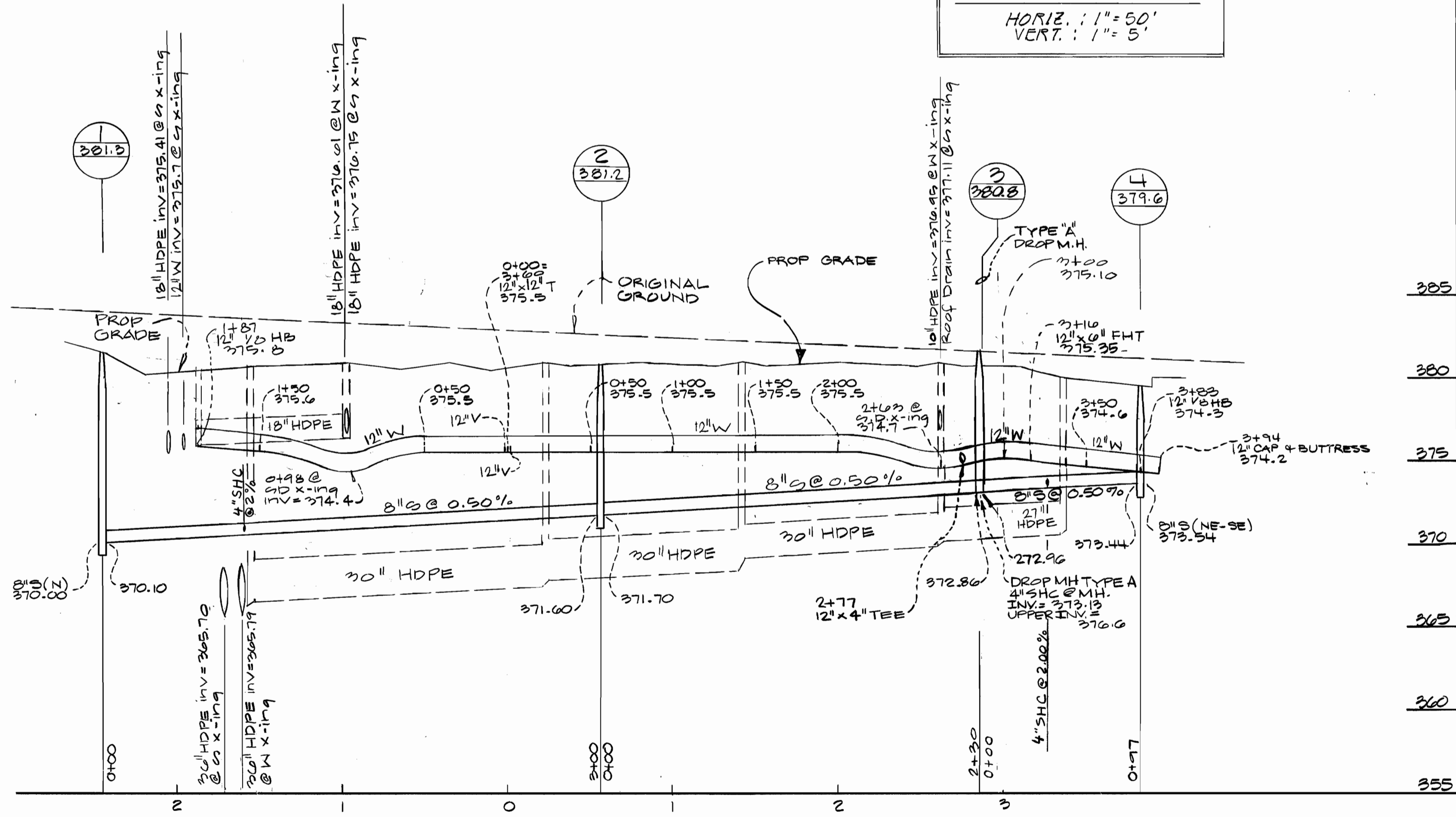
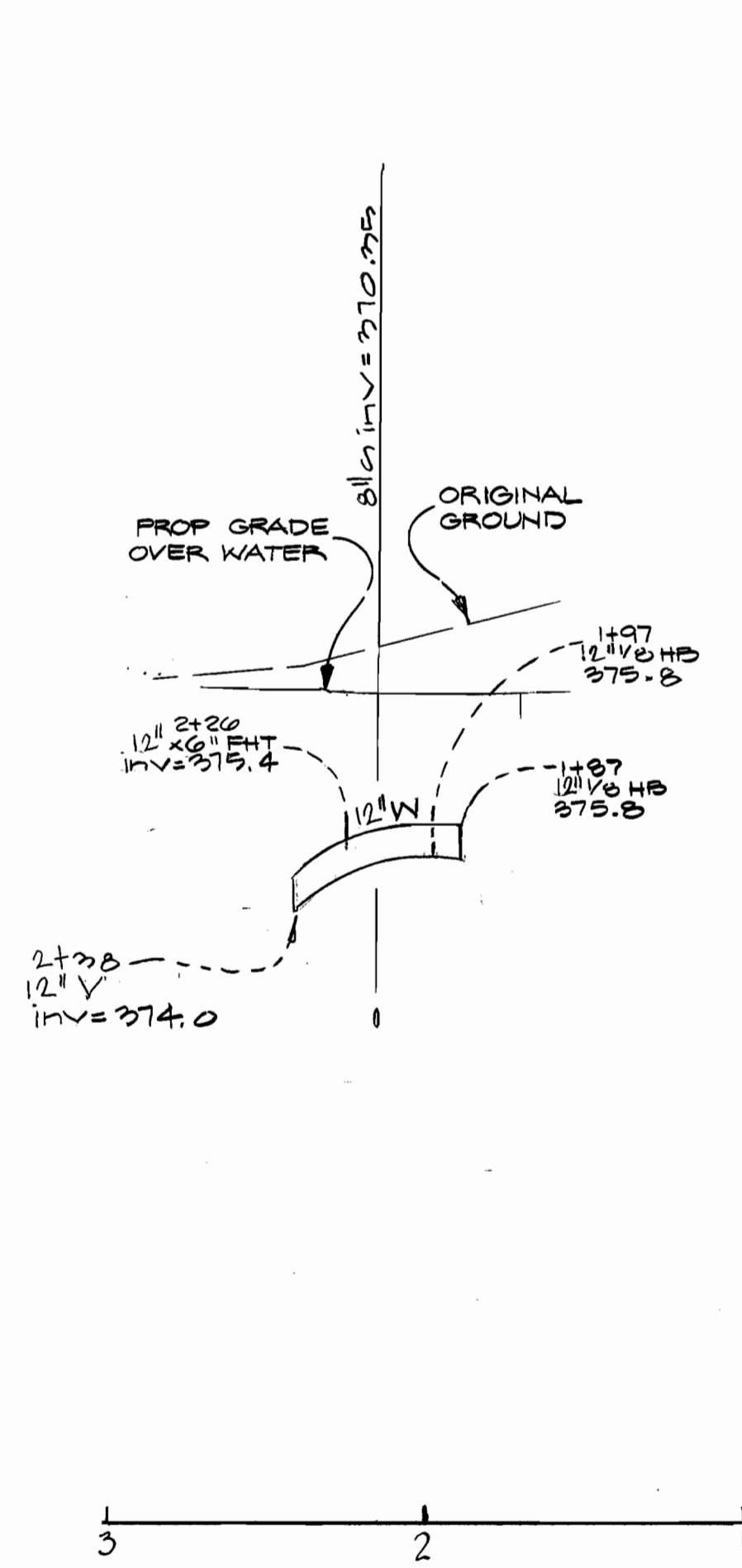
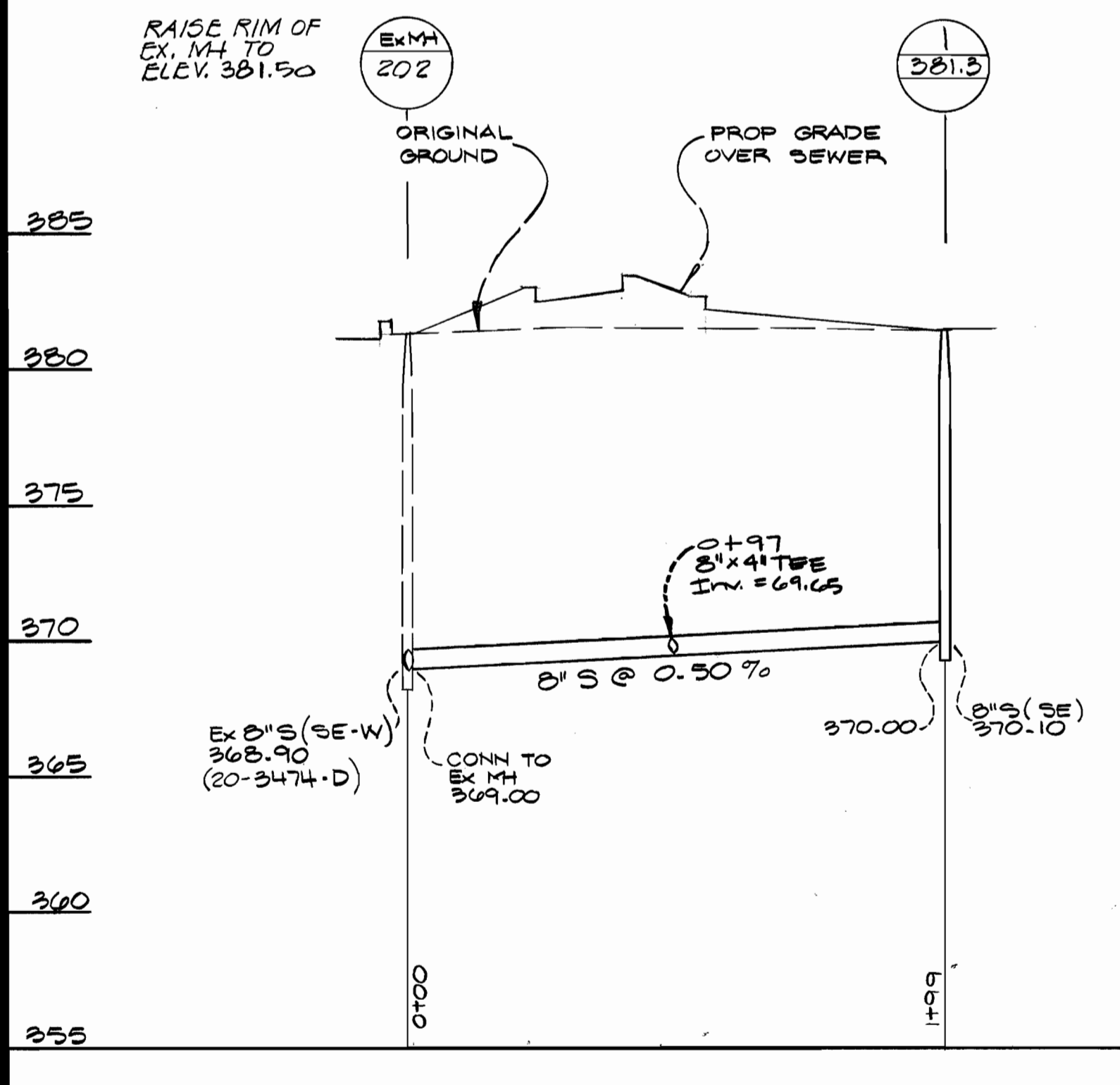
SCALE AS SHOWN

SHEET 1 OF 3

01014\DESIGN\WCSOVY.dwg 7-20-01 4:28:44 pm EST



PROFILE SCALE
 HORIZ. : 1" = 50'
 VERT. : 1" = 5'



DEPARTMENT OF PUBLIC WORKS
 HOWARD COUNTY, MARYLAND
 7-26-01
 CHIEF, BUREAU OF UTILITIES

DEPARTMENT OF PLANNING AND ZONING
 HOWARD COUNTY, MARYLAND
 1/6/01
 CHIEF, DEVELOPMENT ENGINEERING DIVISION

GLW GUTSCHICK LITTLE & WEBER, P.A.
 CIVIL ENGINEERS, LAND SURVEYORS, LAND PLANNERS, LANDSCAPE ARCHITECTS
 3909 NATIONAL DRIVE - SUITE 250 - BURTONSVILLE OFFICE PARK
 BURTONSVILLE, MARYLAND 20886
 TEL: 301-421-4024 BAL: 410-388-1523 DC/VA: 301-889-2524 FAX: 301-421-4186



DES:	
DRN:	
CHK:	
DATE: 6/01	
BY:	
NO:	
REVISION:	ADD 8x4 SHC TEE REVISOR LOCATION MH 3, ADD 12x4 TEE
DATE:	12-27-01

PUBLIC WATER AND SEWER PROFILE
 600' SCALE MAP NO. 36 & 37, BLOCK NO. _____

Route 175 Commercial
 CONTRACT # 24-3973-D
 PARCELS 'C-1' thru 'C-3'
 SECTION 1, AREA 2
 L.4118, P.16
 WEST FRIENDSHIP ELECTION DISTRICT No. 6
 HOWARD COUNTY, MARYLAND

SCALE AS SHOWN
 SHEET 3 OF 3

GLW FILE No. 01014