
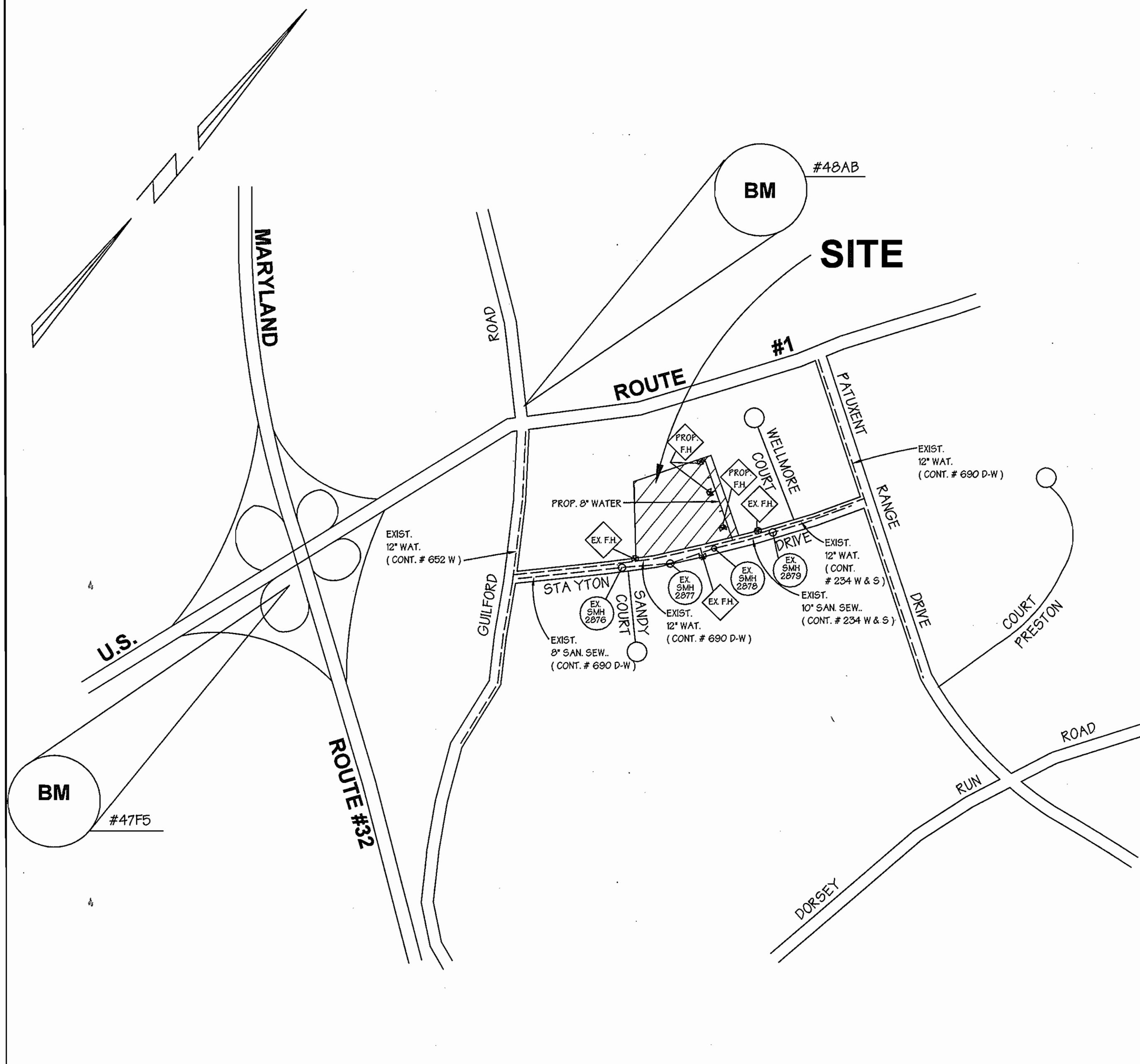


# GENERAL NOTES

- Approximate location of existing mains are shown. The contractor shall take all necessary precautions to protect existing mains and services and maintain uninterrupted supply. Any damage incurred shall be repaired immediately to the satisfaction of the Engineer at the Contractor's expense.
- All horizontal controls are based on Maryland State Coordinates.
- All vertical controls are based on U.S.G.S. data.
- All pipe elevations shown are invert elevations.
- Clear all utilities by a minimum of 6". Clear all poles by 2'-0" minimum or tunnel as required. The owner has contacted the utility companies and has made arrangements for bracing of poles as shown on the drawings. In the event the contractor's work requires the bracing of additional poles, any cost incurred by the owner for bracing of additional poles or damages shall be deducted from money owed the contractor. The contractor shall coordinate with the utility companies to schedule the bracing of the poles.
- For details not shown on the drawings, and for materials and construction methods use Howard County Design Manual, Volume IV, Standard Specifications and Detail for Construction (Latest Edition). The contractor shall have a copy of Volume IV on the job.
- Where test pits have been made on existing utilities, they are noted by the symbol  at the location of the test pit. A note or notes containing the results of the test pit or pits is included on the drawings. Existing utilities in the vicinity of the proposed work for which test pits have not been dug shall be located by the contractor two weeks in advance of construction operations at his own expense.
- Contractor shall notify the following utility companies or agencies at least five working days before starting work shown on these plans:
 

State Highway Administration	531-5533
Baltimore Gas & Electric Co. Contractor Services	850-4620
Baltimore Gas & Electric Co. Underground Damage Control	787-9068
Miss Utility	1-800-257-7777
Colonial Pipeline Co.	795-1390
Bureau of Utilities, Howard County Department of Public Works	313-4900
- Contractor shall remove trees, stumps and roots along line of excavation. Payment for such removal shall be included in the unit price bid for construction of the main.
- All fill areas within future roadway and under structures to be compacted to a minimum of 95% compaction as determined by AASHTO T-100.
- Valves adjacent to tees shall be strapped to tees.
- All water mains to be D.I.P. Class 52 unless otherwise noted.
- Tops of all water mains to have a minimum of 3'-1/2' cover unless otherwise noted.
- All fittings shall be buttressed or anchored with concrete in accordance with the Standard Details unless otherwise provided for on the drawings.
- Fire hydrants shall be set to the bury line elevations shown on the drawings. All fire hydrants shall be restrained and buttressed with concrete in accordance with Standard Details. Soil around the fire hydrant shall be compacted in accordance with Section 1000 and 1005 of the Standard Specifications.
- The contractor shall notify the Bureau of Highways, Howard County, at (410) 313-2450 at least five working days before any open cut of any County road or boring/jacking operation in County roads for laying water/sewer mains or house connections. The approval of these drawings will constitute compliance with DPW requirements per Section 10.114(a) of the Howard County Code.
- The contractor shall not operate any water main valves on the existing water system.
- All water house connections shall be for inside meter setting unless otherwise noted on plans or in specifications.
- All sewer mains shall be D.I.P. or P.V.C., unless otherwise noted.
- All manholes shall be 4'-0" inside diameter unless otherwise noted.
- Manholes to be precast concrete structure.
- Manholes shown with 12" and 16" area are for brick manholes only.
- All fire hydrants to be 3.0' behind back of curb.



## LOCATION MAP

SCALE: 1" = 600'

### WATER CONSTRUCTION PLANS

# STAYTON BUSINESS CENTER II BALTIMORE WASHINGTON INDUSTRIAL PARK

Block B,  
PARCEL D-1

6th ELECTION DISTRICT HOWARD COUNTY, MARYLAND

CONTRACT NO. 44-3931-D

TYPE OF BLDG:	OFFICE/WAREHOUSE
NO. OF LOTS:	1
NO. OF WATER H.C.:	2
NO. OF SEWER H.C.:	0
DRAINAGE AREA:	SHALLOW RUN
WATER CODE:	B02
SEWER CODE:	420B00
TEST GRADIENT ELEV:	500
TREATMENT PLANT:	FATAFSCO HOWARD COUNTY, MARYLAND

## BENCHMARKS

BENCHMARK #47F5  
AKA- 1943015 HOWARD COUNTY GEODETIC CONTROL  
NAD 83  
N 535985.052 E 1365653.509  
ELEVATION = 235.716'

BENCHMARK #48AB  
AKA-N/A HOWARD COUNTY GEODETIC CONTROL  
N 538384.463 E 1366415.854  
NAD 83  
ELEVATION = 226.367'

## QUANTITIES

ITEMS	QUANTITIES ESTIMATED	AS-BUILT		
		QUANTITIES	TYPE	MANUFACTURER/ SUPPLIER
8" D.I.P. Water Main	668 L.F.	675 L.F.	DIP CLASS 52	U.S. PIPE
6" D.I.P. Water Main	67 L.F.	65 L.F.	DIP CLASS 52	U.S. PIPE
Fire Hydrants	3 Each	3 EACH	—	MUELLER CO.
8"X8" TEE	2 Each	2 EACH	DIP	U.S. PIPE
8"X6" TEE	3 Each	3 EACH	DIP	U.S. PIPE
8" Valve and Roadway Box	3 Each	3 EACH	—	MUELLER CO.
8" Valve Without Roadway Box	1 Each	—	—	—
6" Valve and Roadway Box	3 Each	3 EACH	—	MUELLER CO.
12" x 8" Tapping Sleeve	1 Each	1 EACH	—	MUELLER CO.
1/32 Vertical Bend	1 Each	1 EACH	—	U.S. PIPE

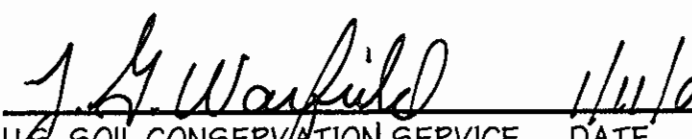
NAME OF UTILITY CONTRACTOR: **CTG INC.**  
SURVEY AND DRAFTING DIVISION AS-BUILT DATE: **JAN. 6, 2005**

SEDIMENT CONTROL MEASURES FOR THIS CONTRACT WILL BE IMPLEMENTED IN ACCORDANCE WITH SECTION 219 OF THE STANDARD SPECIFICATIONS, SDP 01-054

THE DEVELOPMENT PLAN IS APPROVED FOR SOIL EROSION AND SEDIMENT CONTROL BY THE HOWARD SOIL CONSERVATION DISTRICT.

APPROVED:  DATE: 1/12/05  
HOWARD SOIL CONSERVATION DISTRICT

REVIEWED FOR HOWARD SOIL CONSERVATION DISTRICT AND MEETS TECHNICAL REQUIREMENTS.

 DATE: 1/12/05  
U.S. SOIL CONSERVATION SERVICE

OWNER  
**JOSEPH J. HOCK, INC.  
C/O LEE ORGANIZATION, INC.**  
5905 WILMARY LANE  
BALTIMORE, MARYLAND 21210  
410-532-9455

DEVELOPER  
**HOCK / BAVAR STAYTON II, L.L.C.  
C/O BAVAR PROPERTIES GROUP, L.L.C.**  
1966 GREENSPRING DRIVE SUITE # 508  
TIMONIUM, MARYLAND 21093  
410-580-0300

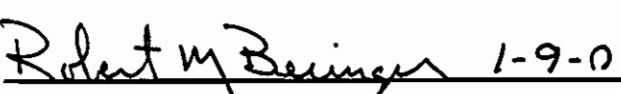
**AS BUILT**  
DATE: **JAN. 6, 2005**

## INDEX OF SHEETS

SHEET NO.	TITLES
1	COVER SHEET, GENERAL NOTES & LOCATION MAP
2	PLAN VIEW AND WATER SEWER PROFILES

BY	NO.	REVISION	DATE

DEPARTMENT OF PUBLIC WORKS  
HOWARD COUNTY, MARYLAND

 DATE: 1-9-01  
CHIEF, BUREAU OF UTILITIES

DEPARTMENT OF PLANNING & ZONING  
HOWARD COUNTY, MARYLAND

 DATE: 1/12/05  
CHIEF, DEVELOPMENT  
ENGINEERING DIVISION



**GEORGE W. STEPHENS, JR.  
AND ASSOCIATES, INC.**  
Civil Engineers and Land Surveyors  
1020 Cromwell Bridge Road  
Towson Maryland 21286  
(410) 825-8120



DESIGNED: PRC, KE  
DRAFTED: KE  
CHECKED: PRC

## COVER SHEET, GENERAL NOTES & LOCATION MAP

CONTRACT NO. 44-3931-D

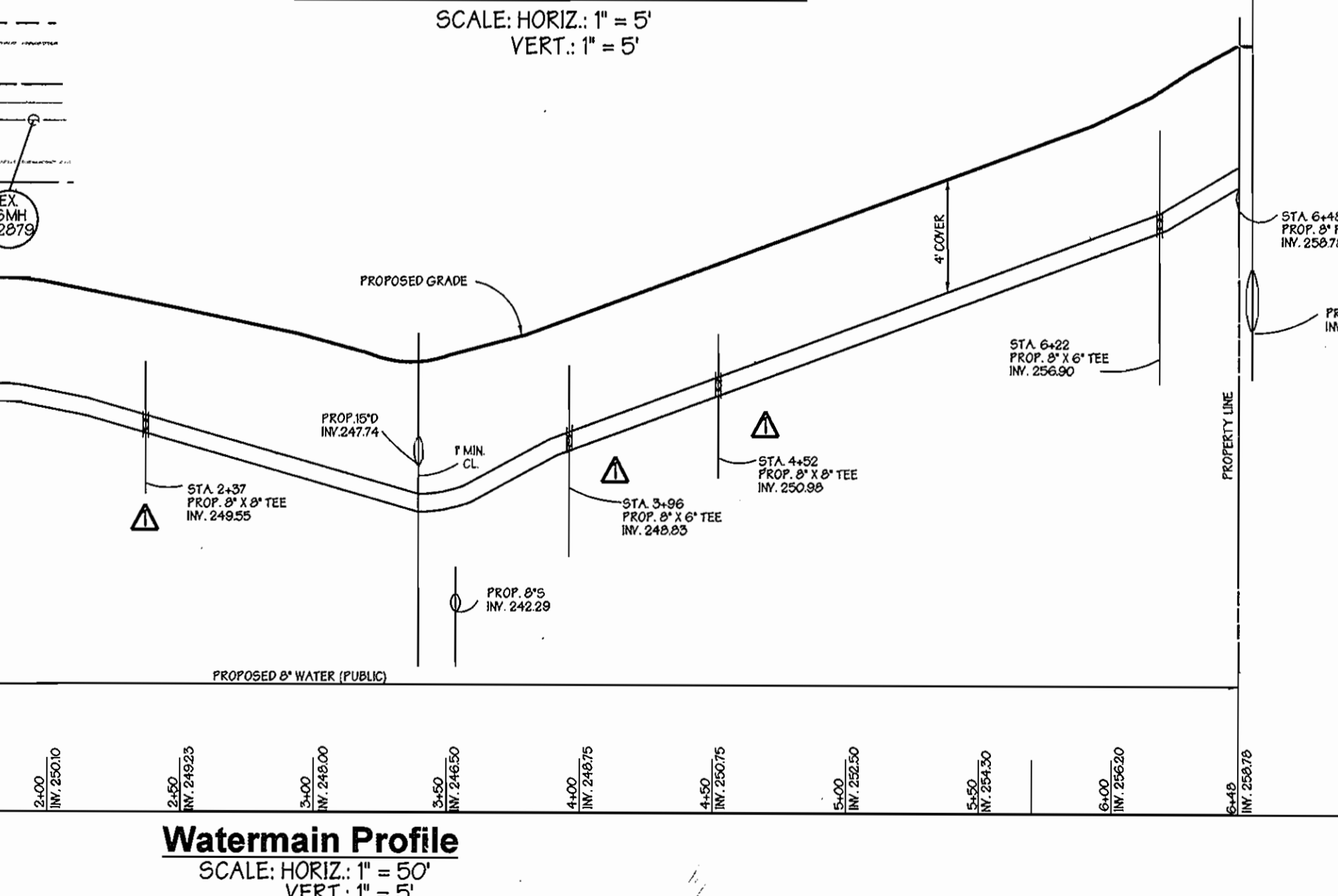
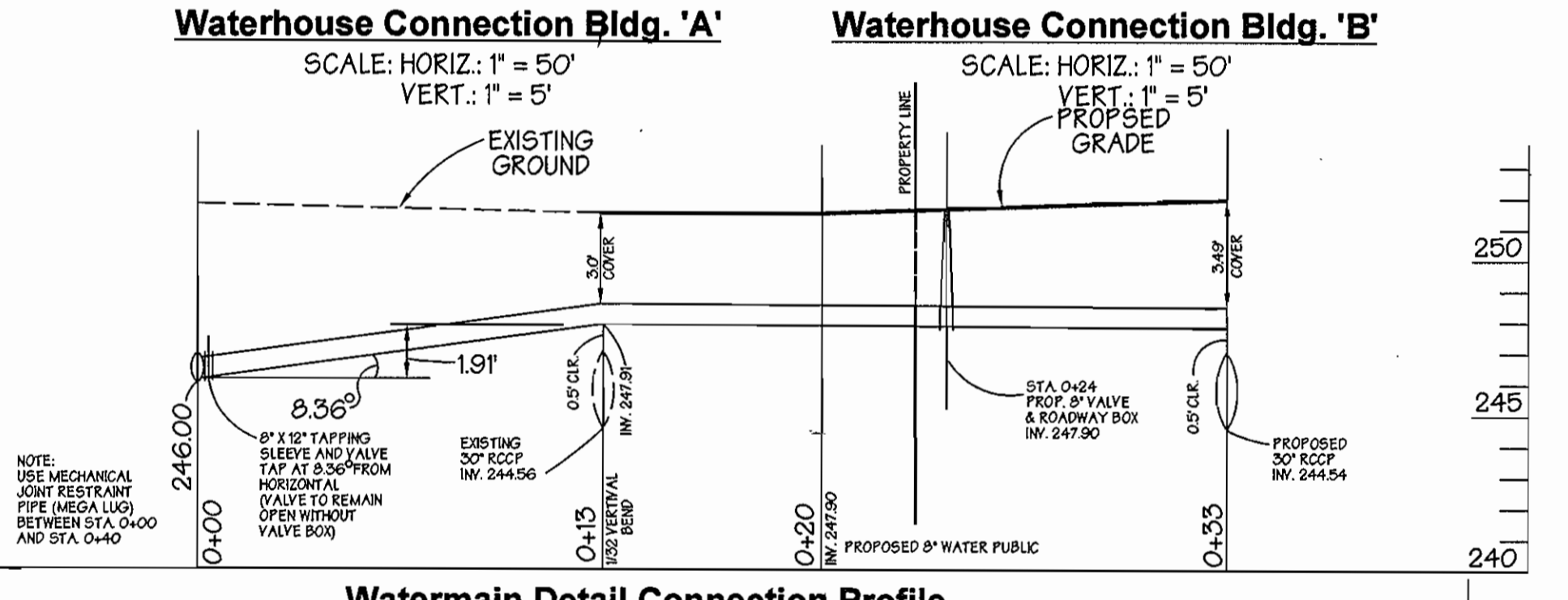
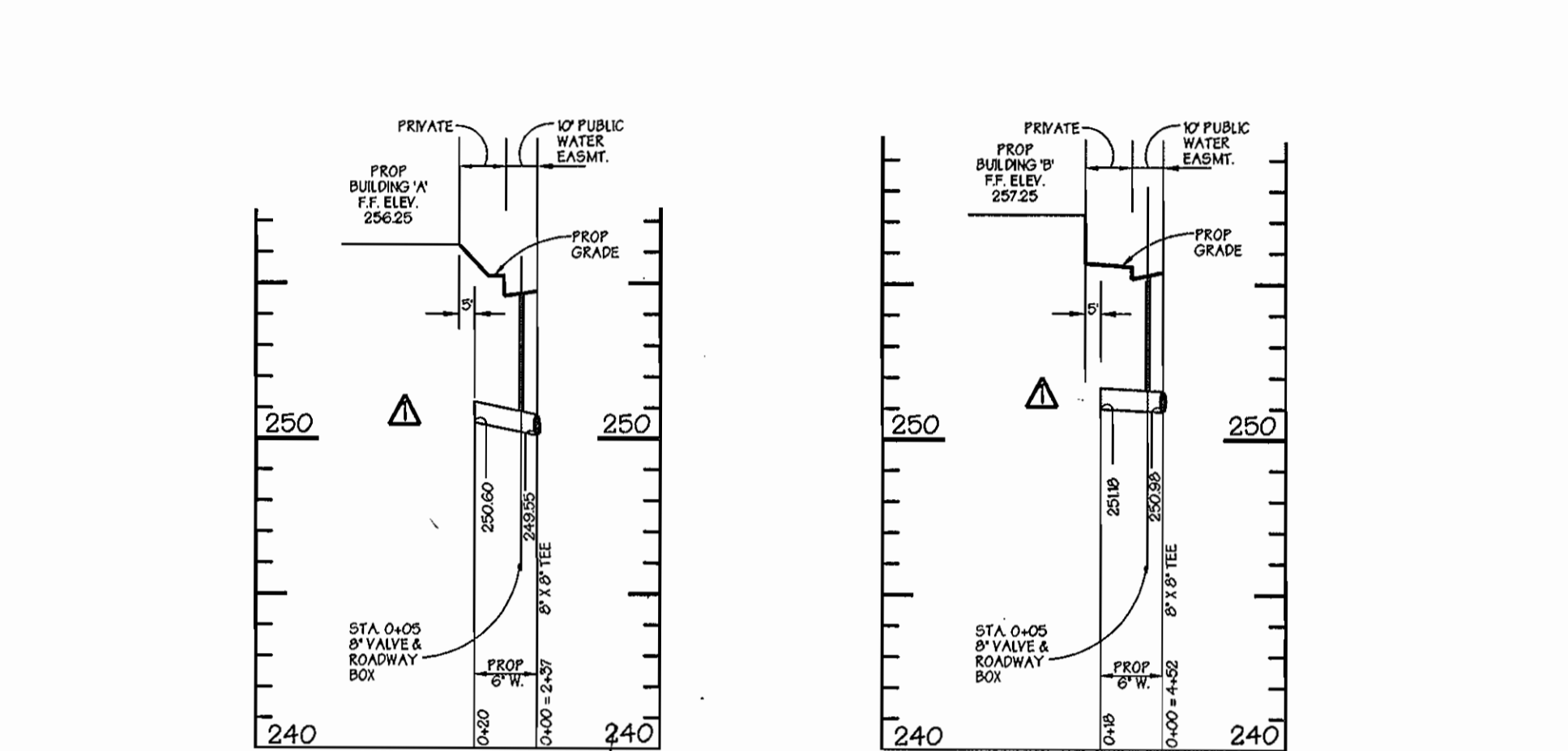
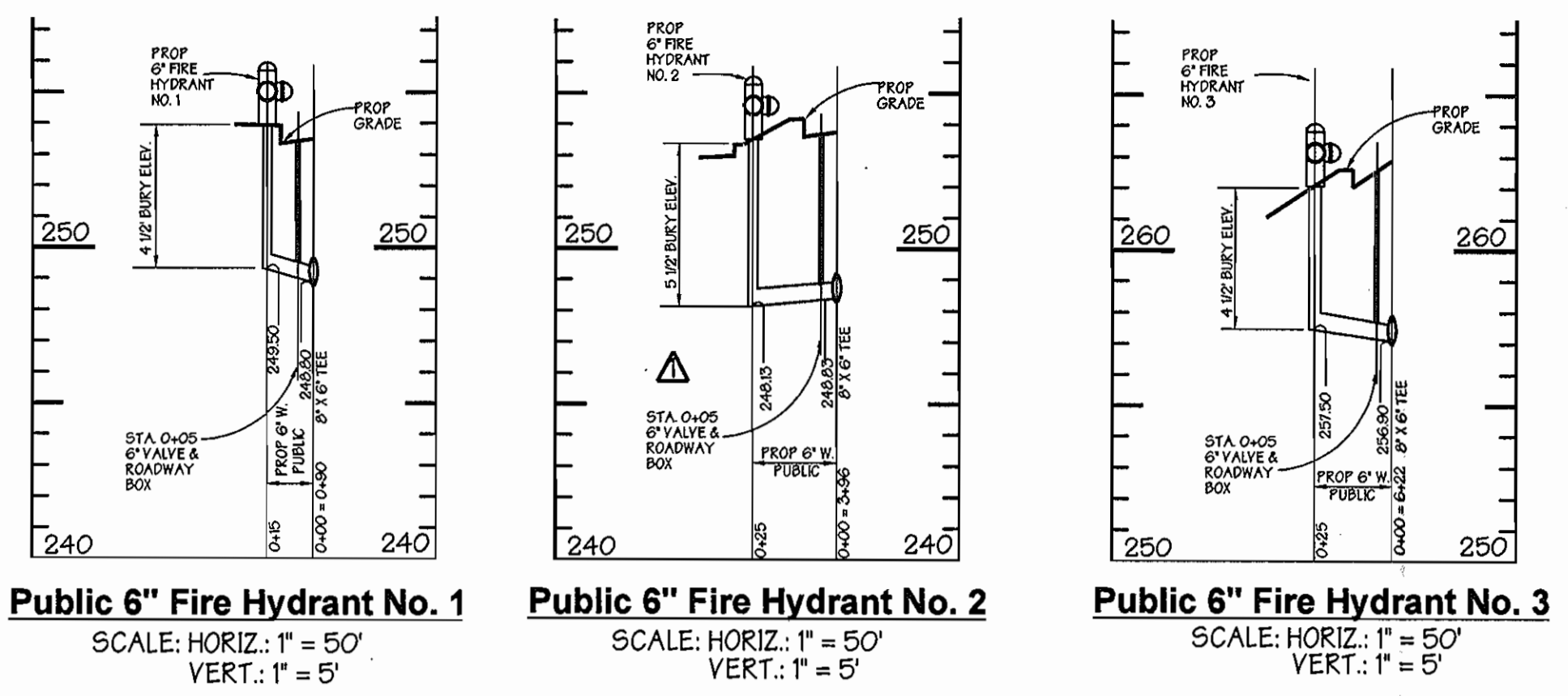
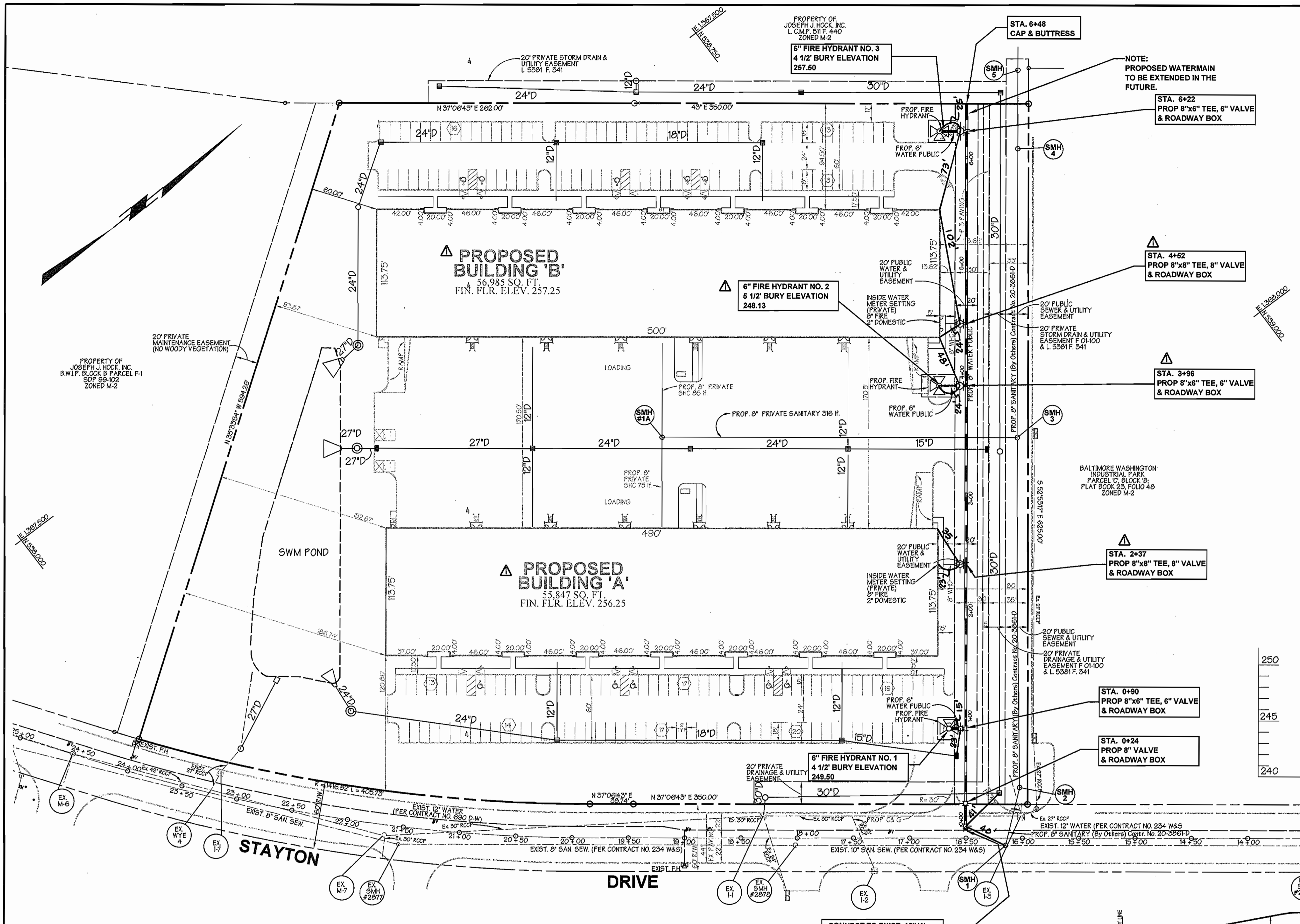
600 SCALE MAP NO. 48

BLOCK NO. 1

## PUBLIC WATER MAIN STAYTON BUSINESS CENTER II BALTIMORE WASHINGTON INDUSTRIAL PARK PARCEL D-1

HOWARD COUNTY, MARYLAND  
ELECTION DISTRICT #06

OCTOBER 04, 2000  
SHEET 1 OF 2



**PLAN**  
SCALE: 1" = 50'

**AS BUILT**  
DATE: JAN. 0, 2005

CONNECT TO EXIST. 12" W (CONT. 234 W & S) W/ 12" X 8" TAPPING SLEEVE VALVE TAP AT 8.36' FROM HORIZONTAL (VALVE TO REMAIN OPEN WITHOUT VALVE BOX SEE PROFILE & DETAIL)

NOTE: THIS DRAWING SUPERSEDES PREVIOUSLY APPROVED DRAWING DATED JANUARY 12, 2001

OWNER	BY	NO.	REVISION	DATE
JOSEPH J. HOCK, INC. C/O LEE ORGANIZATION, INC. 5908 WILMARY LANE BALTIMORE, MARYLAND 21210 410-532-9455	GWS	Δ	REVISED BUILDING 'A' AND 'B' LAYOUT AND RELATED ITEMS, REVISED WATER HOUSE CONNECTIONS	NOVEMBER 04, 2003
			BUILDINGS 'A' AND 'B' AND MOVED FIRE HYDRANT NO. 2	
DEVELOPER HOCK / BAVAR STAYTON II, L.L.C. C/O BAVAR PROPERTIES GROUP, L.L.C. 1988 GREENSPRING DRIVE SUITE # 508 TIMONIU, MARYLAND 21093 410-560-0300			REVISED PROFILES ACCORDINLY	

DEPARTMENT OF PUBLIC WORKS  
HOWARD COUNTY, MARYLAND  
*Richard B. ...* 11-7-03  
CHIEF, BUREAU OF UTILITIES DATE

DEPARTMENT OF PLANNING & ZONING  
HOWARD COUNTY, MARYLAND  
*...* 11/14/03  
CHIEF, DEVELOPMENT ENGINEERING DIVISION DATE

**GWS**  
GEORGE W. STEPHENS, JR.  
AND ASSOCIATES, INC.  
Civil Engineers and Land Surveyors  
1020 Cromwell Bridge Road  
Towson Maryland 21286  
(410) 825-8120



DESIGNED: PRC, KE  
DRAFTED: KE  
CHECKED: PRC

**PLAN & PROFILES**  
CONTRACT NO. 44-3931-D  
600 SCALE MAP NO. 48  
BLOCK NO. 1

**PUBLIC WATER MAIN**  
**STAYTON BUSINESS CENTER II**  
**BALTIMORE WASHINGTON INDUSTRIAL PARK** PARCEL D-1  
HOWARD COUNTY, MARYLAND  
ELECTION DISTRICT #06  
OCTOBER 26, 2000  
SHEET 2 OF 2  
P/N 9522-FILE NAME 9522waterplan1.s01