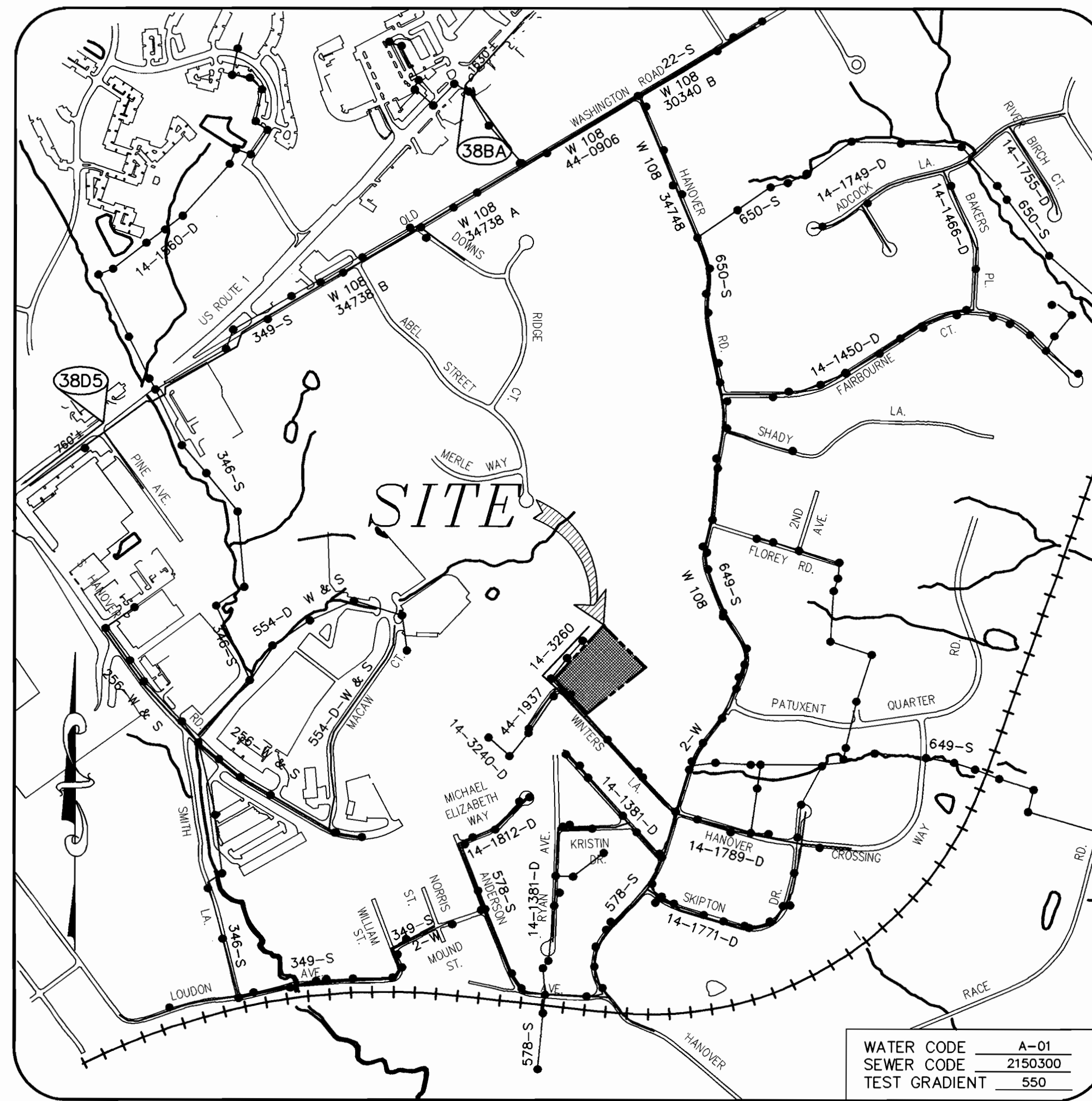


QUANTITY TABLE				
ITEMS	QUANTITIES ESTIMATED	QUANTITIES		
		QUANTITIES	TYPE	MANUFACTURER/SUPPLIER
STANDARD MH (HO. CO. STD. G-5.01)	4			
MANHOLE, VERTICAL FEET	65 L.F.			
8" SEWER	402 L.F.			
4" SEWER HOUSE CONNECTION	110 L.F.			
# SEWER HOUSE CONNECTION	7 EACH			
# MH HOUSE CONNECTIONS	2 EACH			
1" WATER HOUSE CONNECTION	100 L.F.			
# WATER HOUSE CONNECTIONS	7 EACH			
6" WATER	400 L.F.			
8" X 6" TAPPING SLEEVE	1 EACH			
6" VALVE	1 EACH			
6" CAP & BUTTRESS	1 EACH			
1/32 H.B. (6")	2 EACH			
1/4 H.B. (6")	2 EACH			
VALVE AND BLOW-OFF (HO. CO. STD. W-4.13)	1 EACH			
NAME OF UTILITY CONTRACTOR:				
SURVEY AND DRAFTING DIVISION AS-BUILT DATE				



VICINITY MAP
SCALE: 1"=600'

TYPE OF BUILDING	SINGLE FAMILY DETACHED
No. OF UNITS	7
No. OF WATER HOUSE CONNECTION	7
No. OF SEWER HOUSE CONNECTIONS	7
DRAINAGE AREA	PATAPSCO
TREATMENT PLANT	PATAPSCO WASTEWATER TREATMENT PLANT, BALTIMORE

GENERAL NOTES

- APPROXIMATE LOCATION OF EXISTING MAINS ARE SHOWN. THE CONTRACTOR SHALL TAKE ALL NECESSARY PRECAUTIONS TO PROTECT EXISTING MAINS AND SERVICES AND MAINTAIN UNINTERRUPTED SUPPLY. ANY DAMAGE INCURRED SHALL BE REPAIRED IMMEDIATELY TO THE SATISFACTION OF THE ENGINEER AT THE CONTRACTOR'S EXPENSE.
- ALL HORIZONTAL CONTROLS ARE BASED ON MARYLAND STATE COORDINATES (NAD 83).
- ALL VERTICAL CONTROLS ARE BASED ON U.S.S.S. DATA.
- ALL PIPE ELEVATIONS SHOWN ARE INVERT ELEVATIONS.
- CLEAR ALL UTILITIES BY A MINIMUM OF 12". CLEAR ALL POLES BY 2'-0" MINIMUM OR TUNNEL AS REQUIRED. THE OWNER HAS CONTACTED THE UTILITY COMPANIES AND HAS MADE ARRANGEMENTS FOR BRACING OF POLES AS SHOWN ON THE DRAWINGS. IN THE EVENT THE CONTRACTOR'S WORK REQUIRES THE BRACING OF ADDITIONAL POLES, ANY COST INCURRED BY THE OWNER FOR BRACING OF ADDITIONAL POLES OR DAMAGES SHALL BE DEDUCTED FROM MONEY OWED THE CONTRACTOR. THE CONTRACTOR SHALL COORDINATE WITH THE UTILITY COMPANIES TO SCHEDULE THE BRACING OF THE POLES.
- FOR DETAILS NOT SHOWN ON THE DRAWINGS, AND FOR MATERIALS AND CONSTRUCTION METHODS USE HOWARD COUNTY DESIGN MANUAL, VOLUME IV, STANDARD SPECIFICATIONS AND DETAIL FOR CONSTRUCTION (LATEST EDITION). THE CONTRACTOR SHALL HAVE A COPY OF VOLUME IV ON THE JOB.
- WHERE TEST PITS HAVE BEEN MADE ON EXISTING UTILITIES, THEY ARE NOTED BY THE SYMBOL AT THE LOCATION OF THE TEST PIT. A NOTE OR NOTES CONTAINING THE RESULTS OF THE TEST PIT OR PITS IS INCLUDED ON THE DRAWINGS. EXISTING UTILITIES IN THE VICINITY OF THE PROPOSED WORK FOR WHICH TEST PITS HAVE NOT BEEN DUG SHALL BE LOCATED BY THE CONTRACTOR TWO WEEKS IN ADVANCE OF CONSTRUCTION OPERATIONS AT HIS OWN EXPENSE.
- CONTRACTOR SHALL NOTIFY THE FOLLOWING UTILITY COMPANIES OR AGENCIES AT LEAST FIVE WORKING DAYS BEFORE STARTING WORK SHOWN ON THESE PLANS:

STATE HIGHWAY ADMINISTRATION	(410) 531-5533
BG & E CO. CONTRACTOR SERVICES	(410) 850-4620
BG & E CO. UNDERGROUND DAMAGE CONTROL	(410) 787-9068
MISS UTILITY	1-800-257-7777
COLONIAL PIPELINE CO.	(410) 795-1390
HOWARD COUNTY DEPARTMENT OF PUBLIC WORKS	(410) 313-4900
BUREAU OF UTILITIES	(410) 313-4900
- TREES AND SHRUBS ARE TO BE PROTECTED FROM DAMAGE TO THE MAXIMUM EXTENT. TREES AND SHRUBS LOCATED OUTSIDE THE CONSTRUCTION STRIP ARE NOT TO BE REMOVED OR DAMAGED BY THE CONTRACTOR.
- CONTRACTOR SHALL REMOVE TREES, STUMPS AND ROOTS ALONG LINE OF EXCAVATION. PAYMENT FOR SUCH REMOVAL SHALL BE INCLUDED IN THE UNIT PRICE BID FOR CONSTRUCTION OF THE MAIN.
- THE CONTRACTOR SHALL NOTIFY THE BUREAU OF HIGHWAYS, HOWARD COUNTY, AT (410)313-2450 AT LEAST FIVE (5) WORKING DAYS BEFORE ANY OPEN CUT OF ANY COUNTY ROAD OR BORING/JACKING OPERATION IN COUNTY ROADS FOR LAYING WATER/SEWER MAINS OR HOUSE CONNECTIONS. THE APPROVAL OF THESE DRAWINGS WILL CONSTITUTE COMPLIANCE WITH DPW REQUIREMENTS PER SECTION 18.114(g) OF HOWARD COUNTY CODE.
- ALL WATER MAINS TO BE D.I.P. CLASS 52 UNLESS OTHERWISE NOTED.
- TOPS OF ALL WATER MAINS TO HAVE A MINIMUM OF 3-1/2' COVER UNLESS OTHERWISE NOTED.
- VALVES ADJACENT TO TEES SHALL BE STRAPPED TO TEES.
- ALL FITTINGS SHALL BE BUTTRESSED OR ANCHORED WITH CONCRETE IN ACCORDANCE WITH THE STANDARD DETAILS UNLESS OTHERWISE PROVIDED FOR ON THE DRAWINGS.
- FIRE HYDRANTS SHALL BE SET TO THE BURY LINE ELEVATIONS SHOWN ON THE DRAWINGS. ALL FIRE HYDRANTS SHALL BE STRAPPED AND BUTTRESSED WITH CONCRETE IN ACCORDANCE WITH STANDARD DETAILS. SOIL AROUND THE FIRE HYDRANT SHALL BE COMPACTED IN ACCORDANCE WITH SECTION 1000 AND 1005 OF THE STANDARD SPECIFICATIONS.
- THE CONTRACTOR SHALL NOT OPERATE ANY WATER MAIN VALVES ON THE EXISTING WATER SYSTEM.
- ALL WATER HOUSE CONNECTIONS SHALL BE FOR INSIDE METER SETTING UNLESS OTHERWISE NOTED ON PLANS OR IN SPECIFICATIONS.
- ALL SEWER MAINS SHALL BE P.V.C. OR D.I.P. CLASS 52 UNLESS OTHERWISE NOTED.
- ALL MANHOLES SHALL BE 4'-0" INSIDE DIAMETER UNLESS OTHERWISE NOTED.
- FORCE MAINS SHALL BE D.I.P. ONLY.
- MANHOLES DESIGNATED W.T. IN PLAN AND PROFILE SHALL HAVE WATERTIGHT FRAME AND COVERS, STANDARD DETAIL G5.52, WHERE WATERTIGHT MANHOLE FRAME AND COVER IS USED, SET TOP OF FRAME 1" - 6" ABOVE FINISHED GRADE UNLESS OTHERWISE NOTED ON THE DRAWINGS.
- HOUSE(S) WITH THE SYMBOL "C.N.S." INDICATES THAT CELLAR CANNOT BE SERVED.
- STATIONING SHOWN IS WATER MAIN AND CENTER LINE STATIONING.
- CONTRACTOR TO VERIFY THE LOCATION OF ALL EXISTING UTILITIES PRIOR TO COMMENCING CONSTRUCTION.
- SEDIMENT CONTROL TO BE PROVIDED BY F 01-39.
- ALL SEWER HOUSE CONNECTIONS TO BE 4" IN SIZE.
- ALL WATER HOUSE CONNECTIONS TO BE 1" IN SIZE UNLESS OTHERWISE NOTED.
- ALL BUILDINGS WILL HAVE SERVICE TO LOWEST FLOOR UNLESS OTHERWISE NOTED.
- STORM DRAIN SYSTEM INDICATED FOR INFORMATIONAL PURPOSES ONLY, SEE ROAD PLANS (F 01-39) FOR CONSTRUCTION DATA.
- COMPACTION IN FILL AREAS TO BE 95% AS DETERMINED PER AASHTO T-180.

EROSION AND SEDIMENT CONTROL FOR THIS CONTRACT IS PROVIDED UNDER F-01-39

CONTRACT # 14-3930-D

WINTERS RIDGE - LOTS 1 THRU 8

A RESUBDIVISION OF LOT 3

THE NORRIS E. POOL SUBDIVISION

WATER AND SEWER MAIN EXTENSIONS

HOWARD COUNTY, MARYLAND

DEPARTMENT OF PUBLIC WORKS

INDEX OF DRAWINGS

NO.	DESCRIPTION
1	COVER SHEET
2	WATER AND SEWER PLAN AND PROFILE

I/WE CERTIFY THAT ALL DEVELOPMENT AND CONSTRUCTION WILL BE DONE ACCORDING TO THIS PLAN, AND THAT ANY RESPONSIBLE PERSONNEL INVOLVED IN THE CONSTRUCTION PROJECT WILL HAVE A CERTIFICATE OF ATTENDANCE AT A DEPARTMENT OF THE ENVIRONMENT APPROVED TRAINING PROGRAM FOR THE CONTROL OF SEDIMENT AND EROSION BEFORE BEGINNING THE PROJECT. I ALSO AUTHORIZE PERIODIC ON-SITE INSPECTION BY THE HOWARD SOIL CONSERVATION DISTRICT.

James L. Newburn 6-27-01
DEVELOPER'S SIGNATURE DATE
DEVELOPER'S NAME

I HEREBY CERTIFY THAT THIS PLAN FOR EROSION AND SEDIMENT CONTROL REPRESENTS A PRACTICAL AND WORKABLE PLAN BASED ON MY PERSONAL KNOWLEDGE OF THE SITE CONDITIONS AND THAT IT WAS PREPARED IN ACCORDANCE WITH THE REQUIREMENTS OF THE HOWARD SOIL CONSERVATION DISTRICT.

R. Jacob Hixson 6/15/01
ENGINEER'S SIGNATURE DATE
ENGINEER'S NAME

REVIEWED FOR HOWARD SCD AND MEETS TECHNICAL REQUIREMENTS.

Jim Myers 7/10/01
DATE

THIS DEVELOPMENT PLAN IS APPROVED FOR SOIL EROSION AND SEDIMENT CONTROL BY THE SOIL CONSERVATION DISTRICT.

John R. Roberts 7/10/01
DATE

DPZ FILE NUMBERS	
F 75-18	F 01-39
S 99-06	WP 87-132
P 00-10	

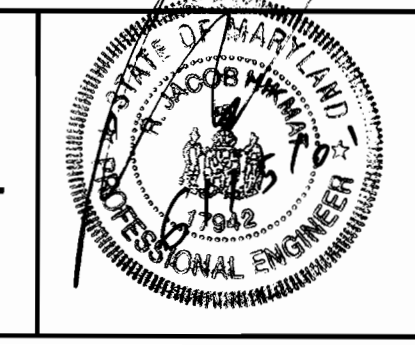
DEPARTMENT OF PUBLIC WORKS
HOWARD COUNTY, MARYLAND

Ruth Remington 7-06-01
CHIEF, BUREAU OF UTILITIES DATE

DEPARTMENT OF PLANNING & ZONING
HOWARD COUNTY, MARYLAND

John P. ... 7/10/01
CHIEF, DEVELOPMENT ENGINEERING DIVISION DATE

MILDENBERG, BOENDER & ASSOC., INC.
Engineers Planners Surveyors
5072 Dorsey Hall Drive, Suite 202, Ellicott City, Maryland 21042
(410) 997-0296 Bult. (301) 621-5521 Wash. (410) 997-0298 Fax.



engineering	KR				
illustration	KR				
approval					
project	99003				
date	JUNE 2001	BY	NO.	REVISION	DATE

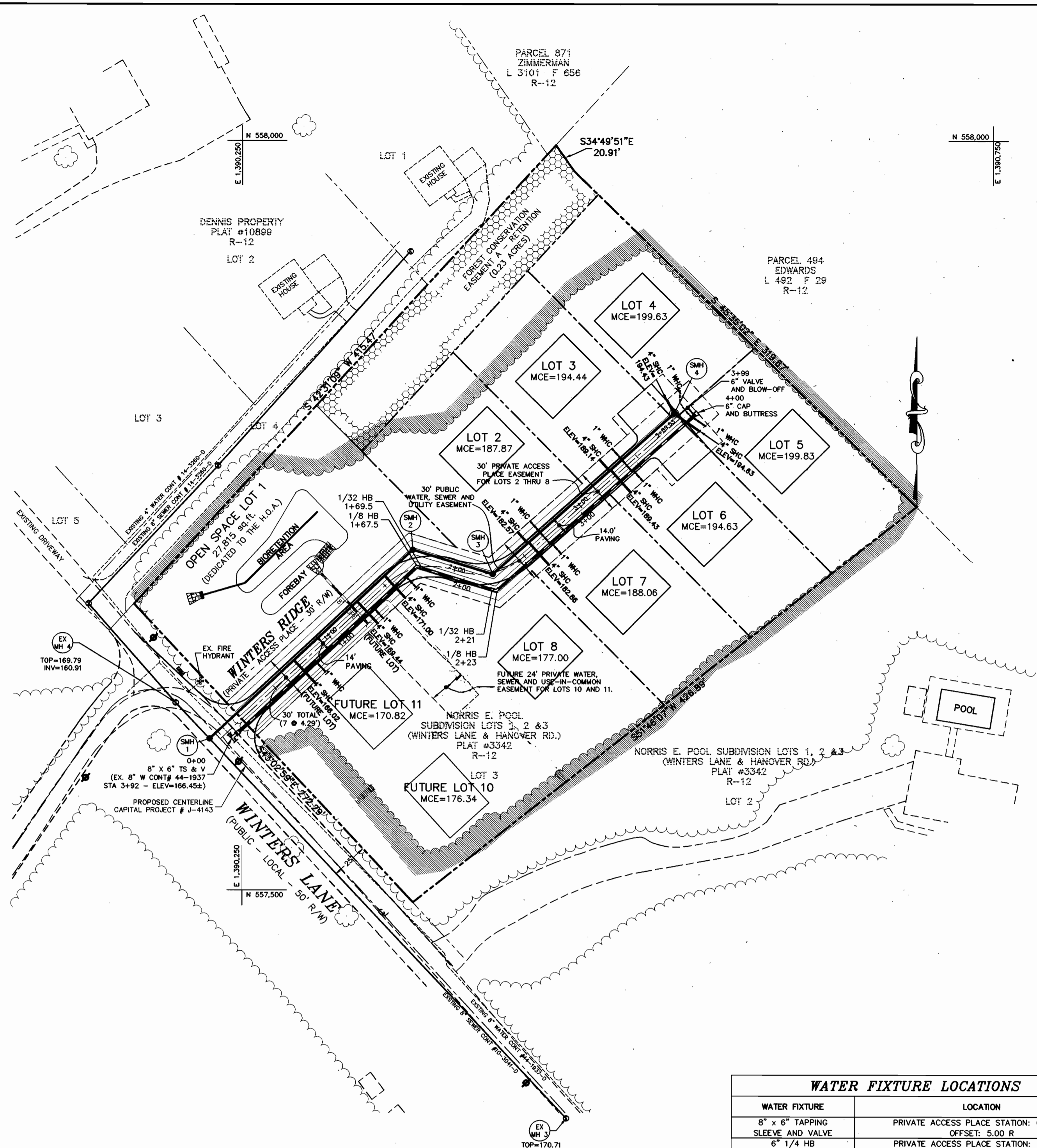
COVER SHEET

600' SCALE MAP NO. 38 BLOCK NO. 15

WINTERS RIDGE
LOTS 1 THRU 8
CONTRACT # 14-3930-D
FIRST ELECTION DISTRICT
HOWARD COUNTY, MARYLAND

scale
N/A
1 OF 2

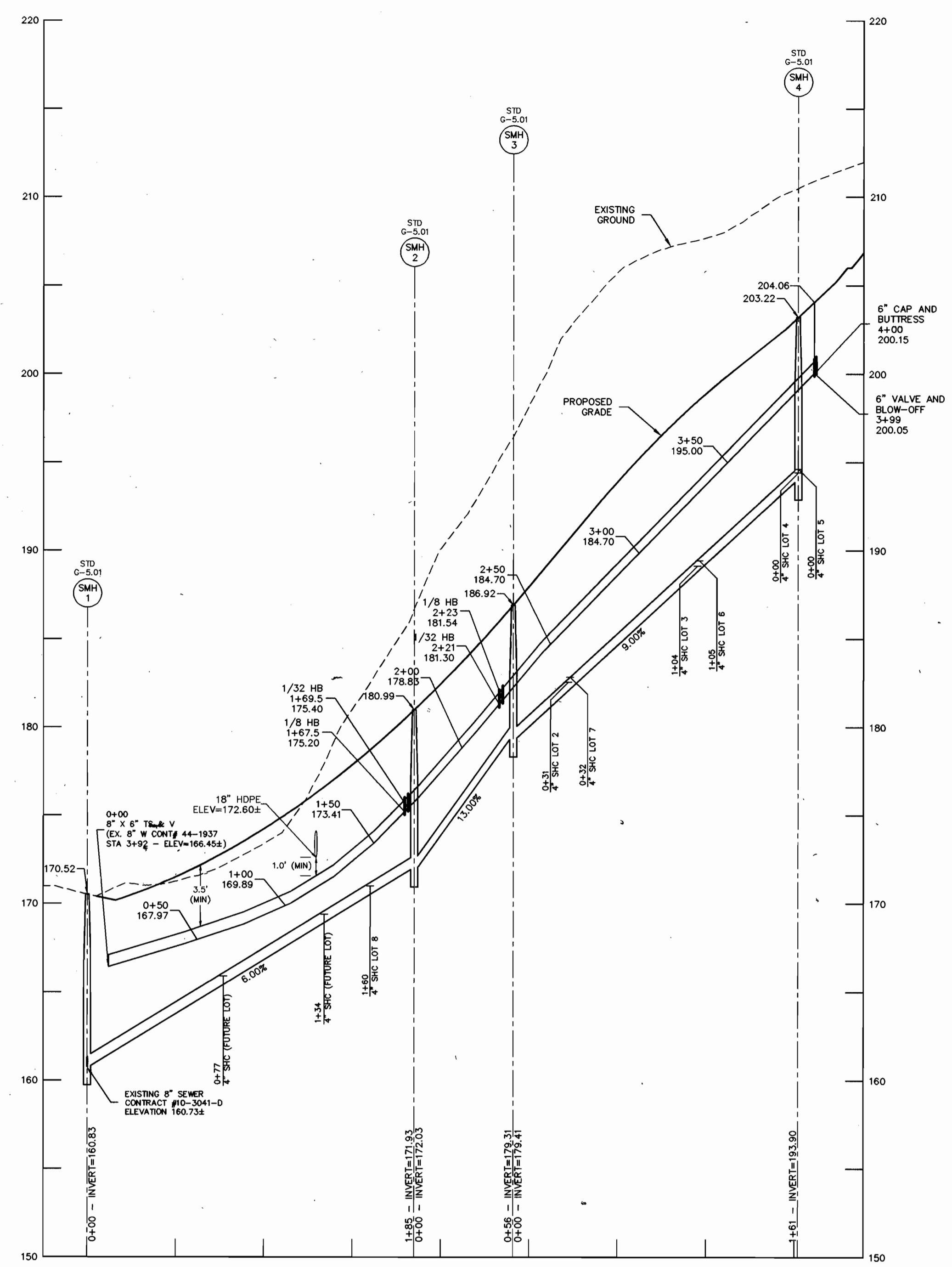
99003.DWG (FINAL) W&S (02)-FINAL_W&S



WATER AND SEWER PLAN
SCALE
1"=50' HORIZONTAL

WATER FIXTURE LOCATIONS	
WATER FIXTURE	LOCATION
8" x 6" TAPPING SLEEVE AND VALVE	PRIVATE ACCESS PLACE STATION: 0+06.67 OFFSET: 5.00 R
6" 1/4 HB	PRIVATE ACCESS PLACE STATION: 1+74.60 WL STA. 1+67.5 OFFSET: 1.19 R
6" 1/32 HB	PRIVATE ACCESS PLACE STATION: 1+76.32 WL STA. 1+69.5 OFFSET: 0.22 R
6" 1/32 HB	PRIVATE ACCESS PLACE STATION: 2+24.20 WL STA. 2+21 OFFSET: 11.38 R
6" 1/4 HB	PRIVATE ACCESS PLACE STATION: 2+25.59 WL STA. 2+23 OFFSET: 12.33 R
6" VALVE AND BLOW-OFF	PRIVATE ACCESS PLACE STATION: 3+96.53 WL STA. 3+99 OFFSET: 5.00 R
BLOW-OFF VAULT	PRIVATE ACCESS PLACE STATION: 3+96.53 WL STA. 3+99 OFFSET: 2.14 L
6" CAP AND BUTTRISS	PRIVATE ACCESS PLACE STATION: 3+61.52 WL STA. 4+00 OFFSET: 5.00 R

SEWER FIXTURE LOCATIONS	
SEWER MANHOLE	LOCATION
MH #1 HO. CO. STD G-5.01	PRIVATE ACCESS PLACE STATION: -0+05.06 OFFSET: 5.00 R
MH #2 HO. CO. STD G-5.01	PRIVATE ACCESS PLACE STATION: 1+74.60 OFFSET: 12.74 L
MH #3 HO. CO. STD G-5.01	PRIVATE ACCESS PLACE STATION: 2+25.59 OFFSET: 0.87 R
MH #4 HO. CO. STD G-5.01	PRIVATE ACCESS PLACE STATION: 3+87.53 OFFSET: 5.00 L



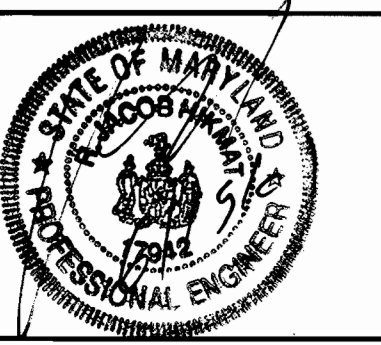
WATER AND SEWER PROFILE
SCALE
1"=50' HORIZONTAL
1"=5' VERTICAL

99003.DWG (FINAL) W&S (03)-FINAL.W&S

DEPARTMENT OF PUBLIC WORKS
HOWARD COUNTY, MARYLAND
R. J. ...
7-6-01
CHIEF, BUREAU OF UTILITIES DATE

DEPARTMENT OF PLANNING & ZONING
HOWARD COUNTY, MARYLAND
M. ...
7/10/01
CHIEF, DEVELOPMENT ENGINEERING DIVISION DATE

MILDENBERG, BOENDER & ASSOC., INC.
Engineers Planners Surveyors
5072 Dorsey Hall Drive, Suite 202, Ellicott City, Maryland 21042
(410) 997-0296 Fax (301) 621-5521 Wash (410) 997-0298 Fax



engineering	KR				
illustration	KR				
approval					
project	99003				
date	JUNE 2001	BY	NO.		
				REVISION	
				DATE	

WATER AND SEWER PLAN AND PROFILE
600' SCALE MAP NO. 38 BLOCK NO. 15

WINTERS RIDGE
LOTS 1 THRU 8
CONTRACT # 14-3930-D
FIRST ELECTION DISTRICT
HOWARD COUNTY, MARYLAND

scale
1"=50'
2 OF 2