

SHEET INDEX	
No.	
1	TITLE SHEET
2	PLAN OF WATER AND SEWER MAINS
3	PROFILES OF WATER AND SEWER MAINS

WATER AND SEWER EXTENSIONS

DORSEY RUN INDUSTRIAL PARK

6th ELECTION DISTRICT

HOWARD COUNTY, MARYLAND

CONTRACT NO.24-3911-D

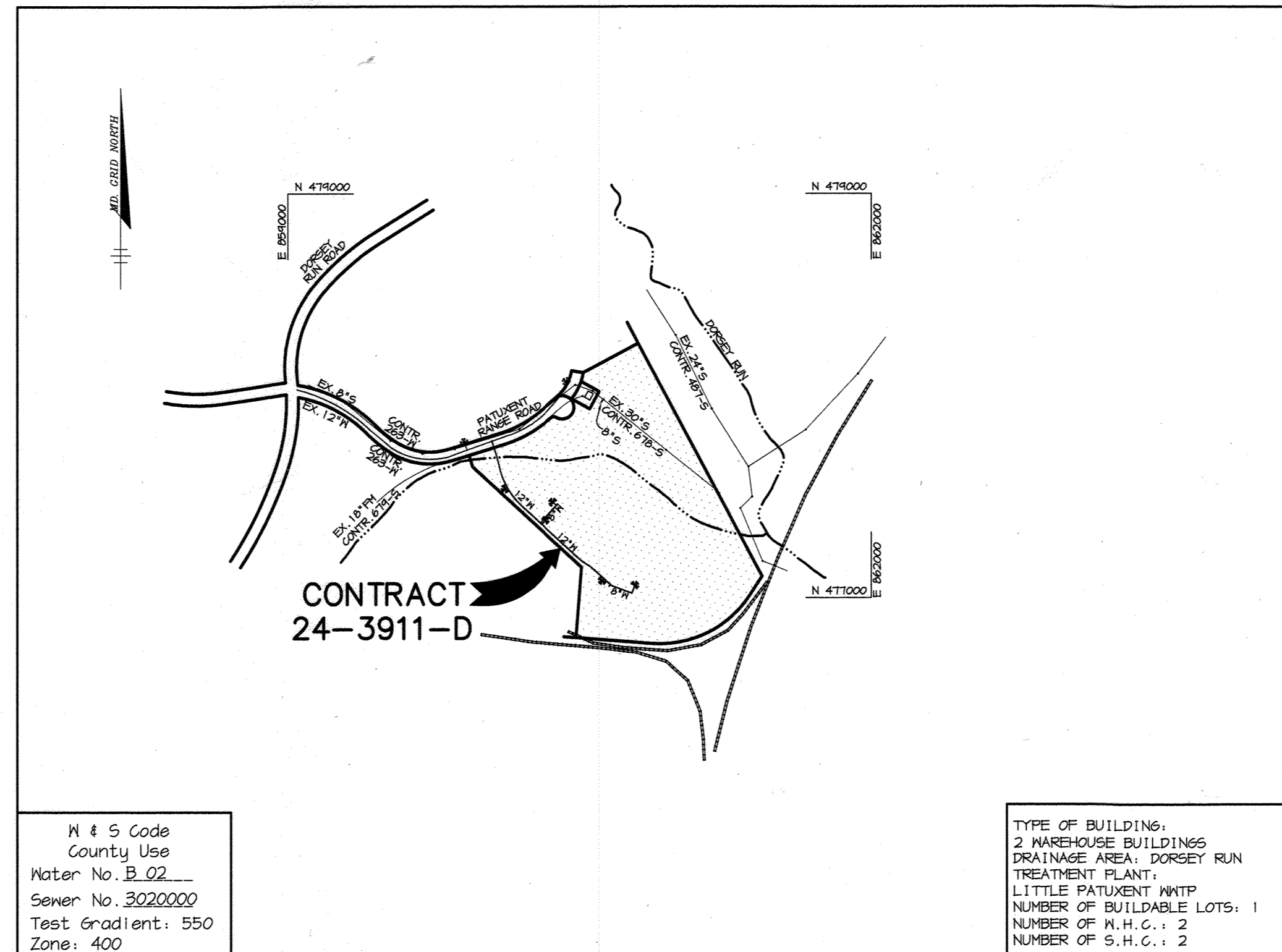
BENCHMARKS

BENCHMARK #1
 HOWARD COUNTY SURVEY CONTROL
 STATION: 2043004
 N 477,550.978 E 857,445.252
 ELEVATION: 230.274
 CONCRETE MONUMENT, 0.2' ABOVE
 SURFACE, 500' EAST OF UNITED
 STATES TRUCKING WAREHOUSE

BENCHMARK #2
 HOWARD COUNTY SURVEY CONTROL
 STATION: 2044008-R
 N 476,924.101 E 859,060.366
 ELEVATION: 210.767
 REBAR LOCATED ON B40 RAILROAD
 SPUR 3' NORTH OF TOP BANK
 0.3' BELOW SURFACE, 350' EAST
 OF BRIDGE ABUTMENT AT DORSEY
 RUN ROAD

GENERAL NOTES

- Approximate location of existing mains are shown. The contractor shall take all necessary precautions to protect existing mains and services and maintain uninterrupted supply. Any damage incurred shall be repaired immediately to the satisfaction of the Engineer at the contractor's expense.
- All horizontal controls are based on Maryland State Coordinates.
- All vertical controls are based on U.S.G.S. data.
- All pipe elevations shown \curvearrowright are invert elevations.
- Clear all utilities by a minimum of 6'. Clear all poles by 2'-0" minimum or tunnel as required. The owner has contacted the utility companies and has made arrangements for bracing of poles as shown on the drawings. In the event the contractor's work requires the bracing of additional poles, any cost incurred by the owner for bracing of additional poles or damages shall be deducted from money owed the contractor. The contractor shall coordinate with the utility companies to schedule the bracing of the poles.
- For details not shown on the drawings, and for materials and construction methods use Howard County Design Manual, Volume IV, Standard Specifications and Detail for Construction, (Latest Edition). The contractor shall have a copy of Volume IV on the job.
- Where test pits have been made on existing utilities, they are noted by the symbol \blacksquare at the location of the test pit. A note or notes containing the results of the test pit or pits is included on the drawings. Existing utilities in the vicinity of the proposed work for which test pits have not been dug shall be located by the contractor two weeks in advance of construction operations at his own expense.
- Contractor shall notify the following utility companies or agencies at least five working days before starting work shown on these plans:
 State Highway Administration 410-331-5533
 Baltimore Gas & Electric Co. Contractor Services 410-250-4620
 Baltimore Gas & Electric Co. Underground Damage Control 410-291-4607
 Miss Utility 1-800-257-7777
 Colonial Pipeline Co. 410-544-4120
 Bureau of Utilities, Howard County Department of Public Works 410-313-4400
 BELL ATLANTIC 1-800-446-5266
- Trees and shrubs are to be protected from damage to maximum extent. Trees and shrubs located within the construction strip are not to be removed or damaged by the contractor.
- Contractor shall remove trees, stumps and roots along line of excavation. Payment for such removal shall be included in the unit price bid for construction of the main.
- All water mains to be D.I.P. Class 52 unless otherwise noted.
- Tops of all water mains to have a minimum of 3-1/2' cover unless otherwise noted.
- Valves adjacent to tees shall be strapped to tees.
- All fittings shall be buttressed or anchored with concrete in accordance with the Standard Details unless otherwise provided for on the drawings.
- Fire hydrants shall be set to the bury line elevations shown on the drawings. All fire hydrants shall be restrained and buttressed with concrete in accordance with Standard Details. Soil around the fire hydrant shall be compacted in accordance with Section 1000 and 1005 of the Standard Specifications.
- The contractor shall not operate any water main valves on the existing water system.
- All water house connections shall be for inside meter setting unless otherwise noted on plans or in specifications.
- All sewer mains shall be D.I.P. and P.V.C. unless otherwise noted.
- All manholes shall be 4'-0" inside diameter unless otherwise noted.
- Force mains shall be D.I.P. only.
- Manholes shown with 12" and 16" walls are for brick manholes only.
- Manholes designated N.T. in plan and profile shall have watertight frame and covers, Standard Detail 65-52. Where watertight manhole frame and cover is used, set top of frame 1'-6" above finished grade unless otherwise noted on the drawings.
- House(s) with the symbol "C.N.S." indicates that cellar cannot be served.
- Manholes can be either brick or precast concrete structures.
- Contractor is solely responsible for construction means, methods, techniques, sequences, procedures, and safety precautions and programs.
- The fire hydrant shall be installed as per standard detail N.1.11.
- Fire hydrants will be located 3' FROM BACK OF CURB unless otherwise noted.
- For sprinkler systems, all townhomes or multi-family dwelling units should have a minimum of 1" connection with a 3/4" meter.
- The contractor shall notify the Bureau of Highways, Howard County, at (410) 313-7450 at least five (5) working days before any open cut of any County road or boring/jacking operation in County roads for laying water/sewer mains or house connections. The approval of these drawings will constitute compliance with DPM requirements per Section 18.114(a) of the Howard County Code.
- Howard County DPM is hereby granted permission to access private lots shown on these plans in order to maintain public water and sewer house connections at the curb stops and/or cleanouts.



QUANTITIES				
ITEMS	QUANTITIES ESTIMATED	AS-BUILT		
		QUANTITIES	TYPE	MANUFACTURER / SUPPLIER
12" WATER	990 LF	990	CL 52 DIP	U.S. PIPE/SAME
8" WATER	240 LF	240	" " "	" " "
6" WATER	116 LF	116	" " "	" " "
FIRE HYDRANTS	5 EA.	5	KENNEDY	KENNEDY/HUGHES
12"x12"TS&V	1 EA.	1	TYLER AMERICAN	" "
6" VALVES	5 EA.	5	KENNEDY & C.V.	" "
8" VALVES	4 EA.	4	" "	" "
12" VALVES	1 EA.	1	" "	" "
8" PLUG & BUTTRESS	1 EA.	1	M.J.	TYLER/HUGHES
8" DIP CL52	10 LF	10	CL 52 DIP	U.S. PIPE/SAME
SEWER MANHOLE (TYPE B)	1 EA. 24 VF	1	PRECAST	ATLANTIC/SAME

NAME OF UTILITY CONTRACTOR: T.L. SIMONS, INC.

Sediment control measures for this contract will be implemented in accordance with Section 219 of the Specifications and as shown on SDP-01-14

CHECKBOX
 AS-BUILT DATE: 10-16-01
 SURVEY AND DRAFTING DIVISION

Review for Howard Soil Conservation District and meets technical requirements.

J.A. Warfield 12/1/00
 NATURAL RESOURCES CONSERVATION SERVICE DATE

This plan is approved for soil erosion and sediment control by the Howard Soil Conservation District.

John Robertson 12/1/00
 HOWARD SOIL CONSERVATION DISTRICT DATE

DEPARTMENT OF PUBLIC WORKS
 HOWARD COUNTY, MARYLAND

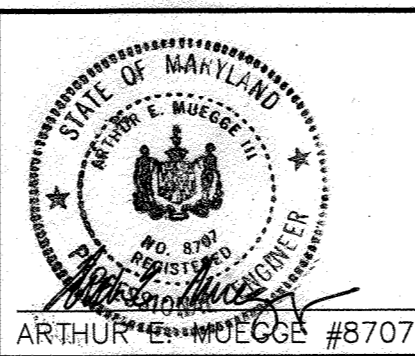
Robert M. Beaman 12-4-00
 CHIEF, BUREAU OF UTILITIES DATE

DEPARTMENT OF PLANNING & ZONING
 HOWARD COUNTY, MARYLAND

William Damman 12/13/00
 CHIEF, DEVELOPMENT ENGINEERING DIVISION DATE

RIEMER MUEGGE
 a division of
 Patton Harris Rust & Associates, PC
 ENGINEERS • SURVEYORS • PLANNERS
 LANDSCAPE ARCHITECTS & ENVIRONMENTAL SPECIALISTS
 8818 Centre Park Drive, Columbia, MD 21046 • tel 410.987.8800 fax 410.987.9262
 DRAWING: 00099/WS1.DWG

ARTHUR MUEGGE #8707



DES: K.E.V.
 DRN: DAM
 CHK: C.J.R.
 DATE: 11/16/00

BY: KCI 1
 NO. AS-BUILT DATA ADDED TO PLAN
 REVISION DATE: 04/19/01

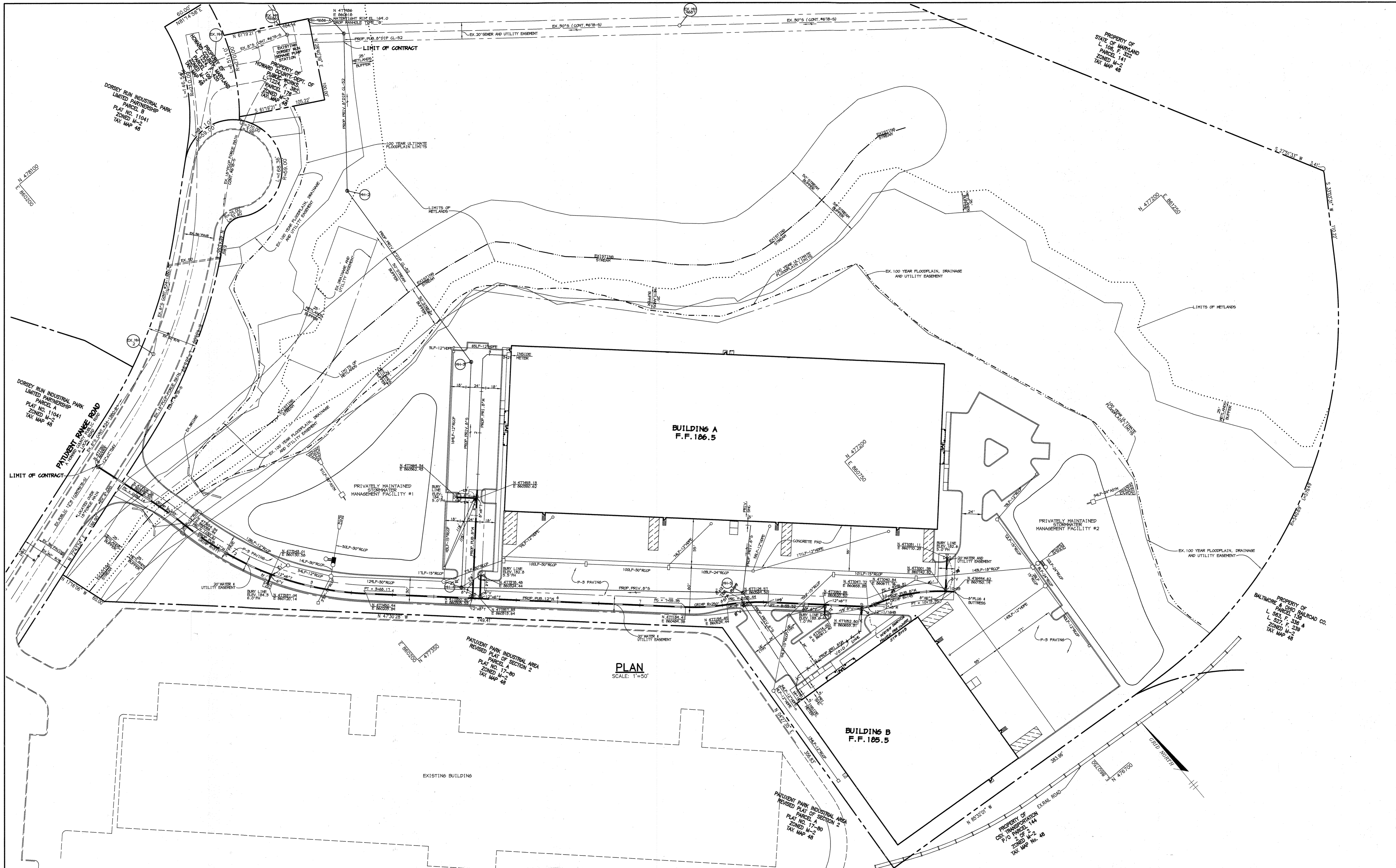
TITLE SHEET

600' SCALE MAP NO. 48 BLOCK NO. 3 & 9

DORSEY RUN INDUSTRIAL PARK
 PARCEL C
 6th ELECTION DISTRICT
 HOWARD COUNTY, MARYLAND
 CONTRACT # 24-3911-D

SCALE AS SHOWN

SHEET 1 OF 3



F:\PROJECT\0099\WS2.dwg Fri Dec 01 10:52:09 2000 Riemer Muegge & Associates, Inc.

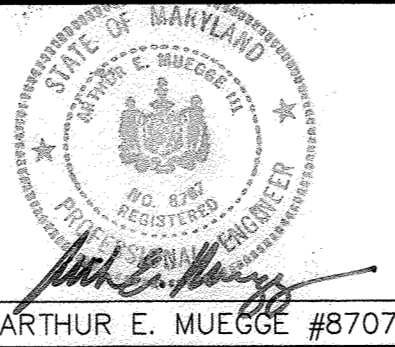
DEPARTMENT OF PUBLIC WORKS
HOWARD COUNTY, MARYLAND

Robert Berman 12-4-00
CHIEF, BUREAU OF UTILITIES DATE

DEPARTMENT OF PLANNING & ZONING
HOWARD COUNTY, MARYLAND

Michael D. ... 12/15/00
CHIEF, DEVELOPMENT ENGINEERING DIVISION DATE

RIEMER MUEGGE
a division of
Patton Harris Rust & Associates, pc
ENGINEERS • SURVEYORS • PLANNERS
LANDSCAPE ARCHITECTS • ENVIRONMENTAL SPECIALISTS
8818 Centre Park Drive, Columbia, MD 21045 • tel 410.997.8800 fax 410.997.8282
DRAWING: 00999/WS2.DWG



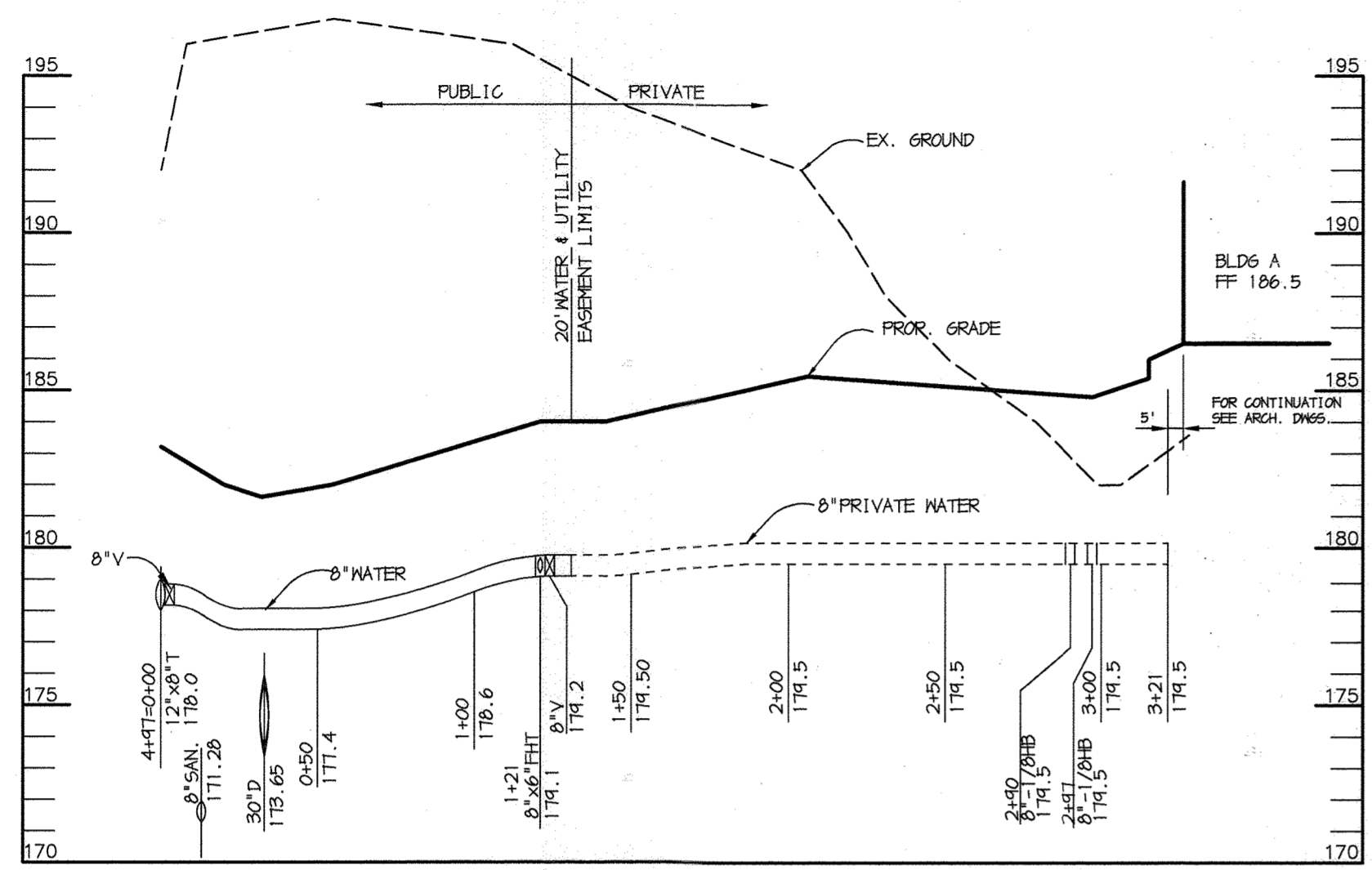
DES:	K.E.V.		
DRN:	DAM		
CHK:	C.J.R.		
DATE:	11/16/00		
BY:	K.E.I.	1	AS BUILT DATA ADDED TO PLAN
NO.:			
REVISION:			
DATE:	04/29/02		

PLAN OF WATER AND SEWER MAINS

600' SCALE MAP NO. 48 BLOCK NO. 3 & 9

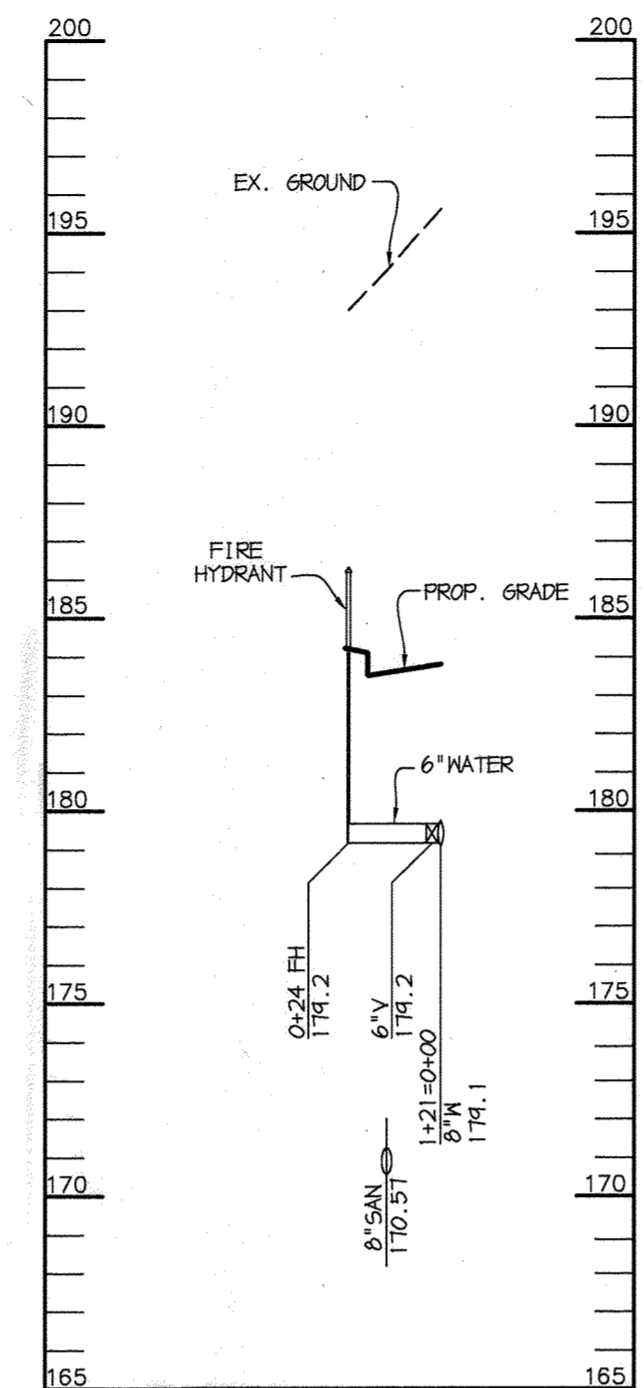
DORSEY RUN INDUSTRIAL PARK PARCEL C
6th ELECTION DISTRICT
HOWARD COUNTY, MARYLAND
CONTRACT # 24-3911-D

SCALE AS SHOWN
SHEET 2 OF 3



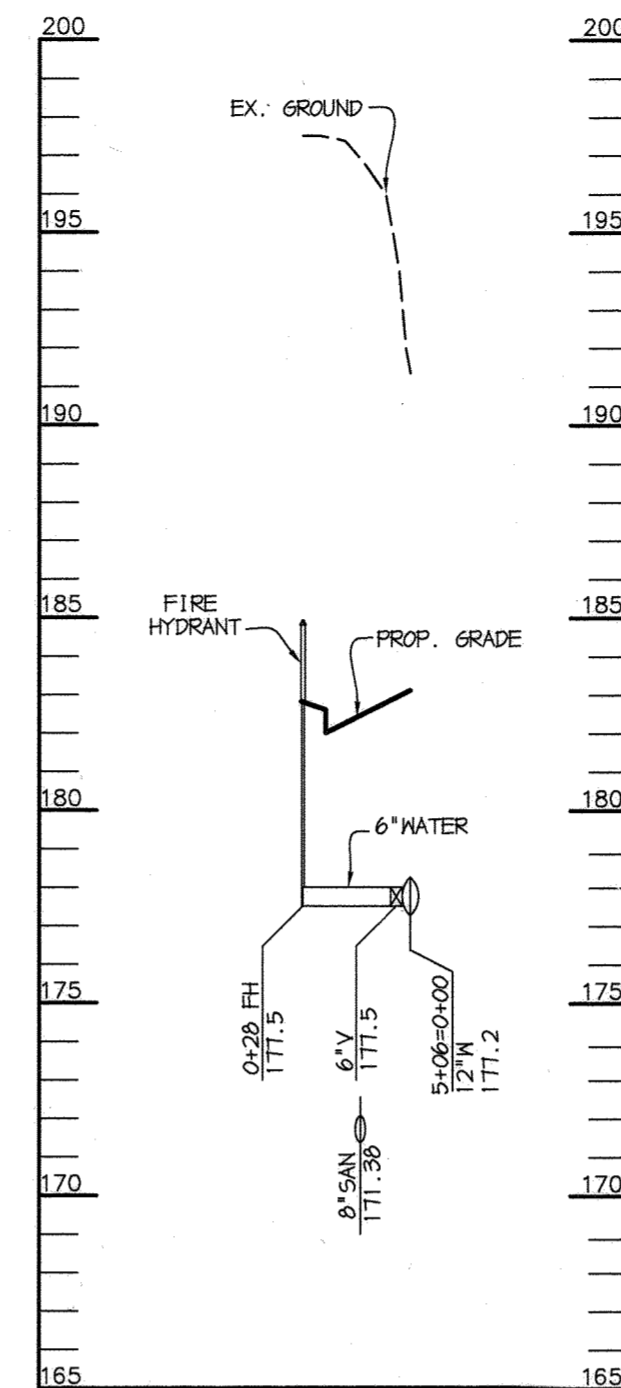
WATER PROFILE FOR BUILDING 'A'

SCALE:
HOR. - 1"=50'
VERT. - 1"=5'



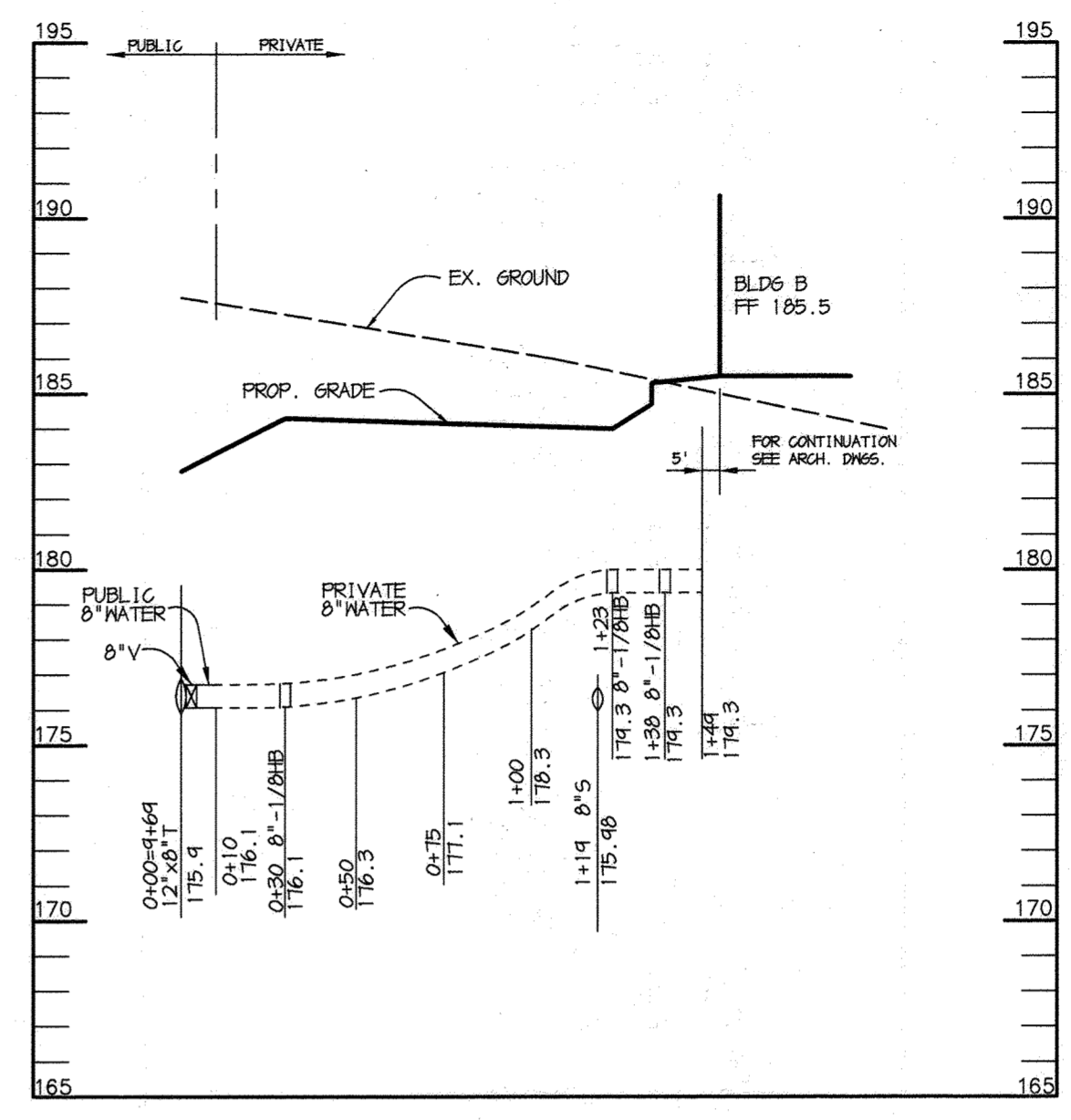
**FIRE HYDRANT PROFILE
@STATION: 1+21**

SCALE:
HOR. - 1"=50'
VERT. - 1"=5'



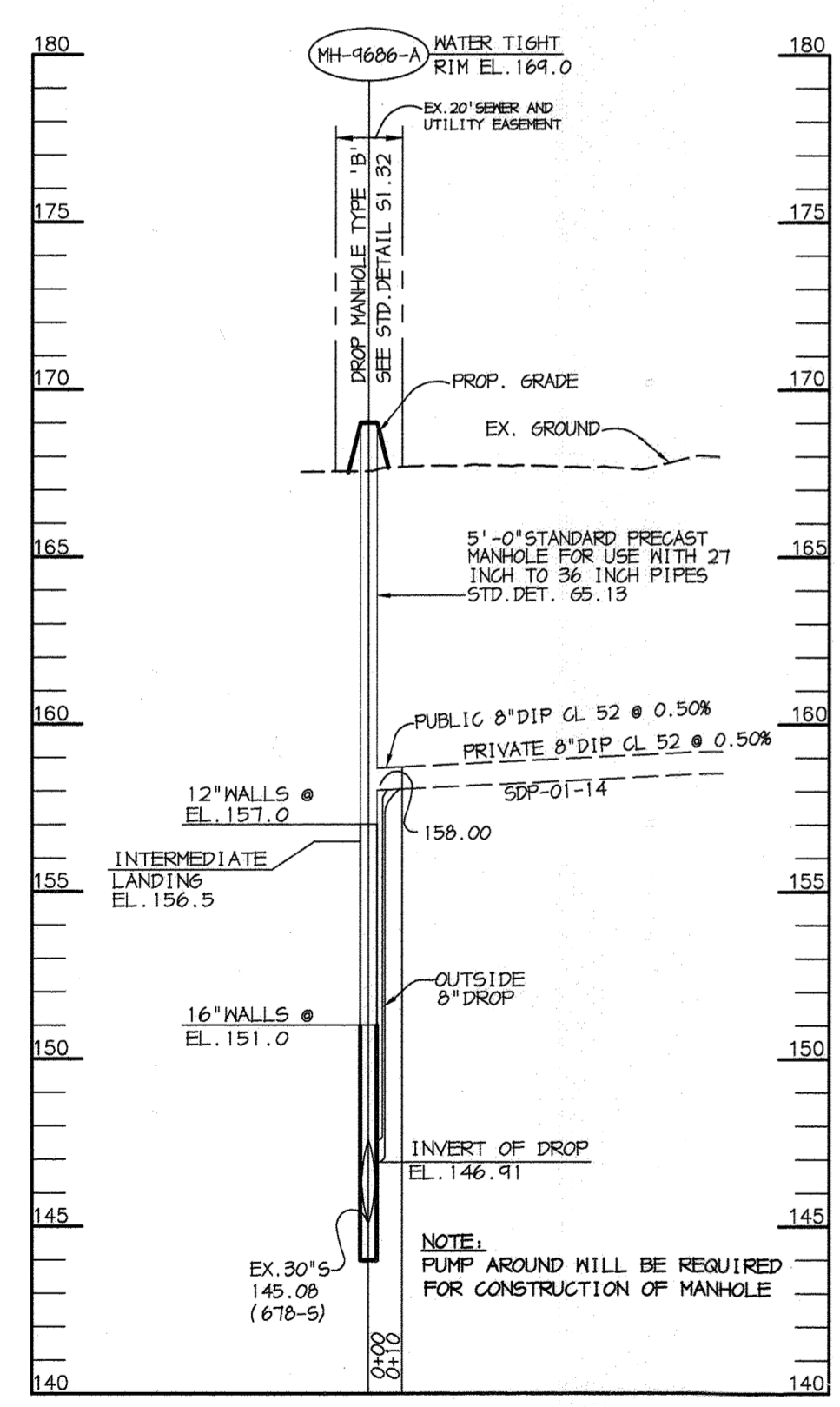
**FIRE HYDRANT PROFILE
@STATION: 5+06**

SCALE:
HOR. - 1"=50'
VERT. - 1"=5'



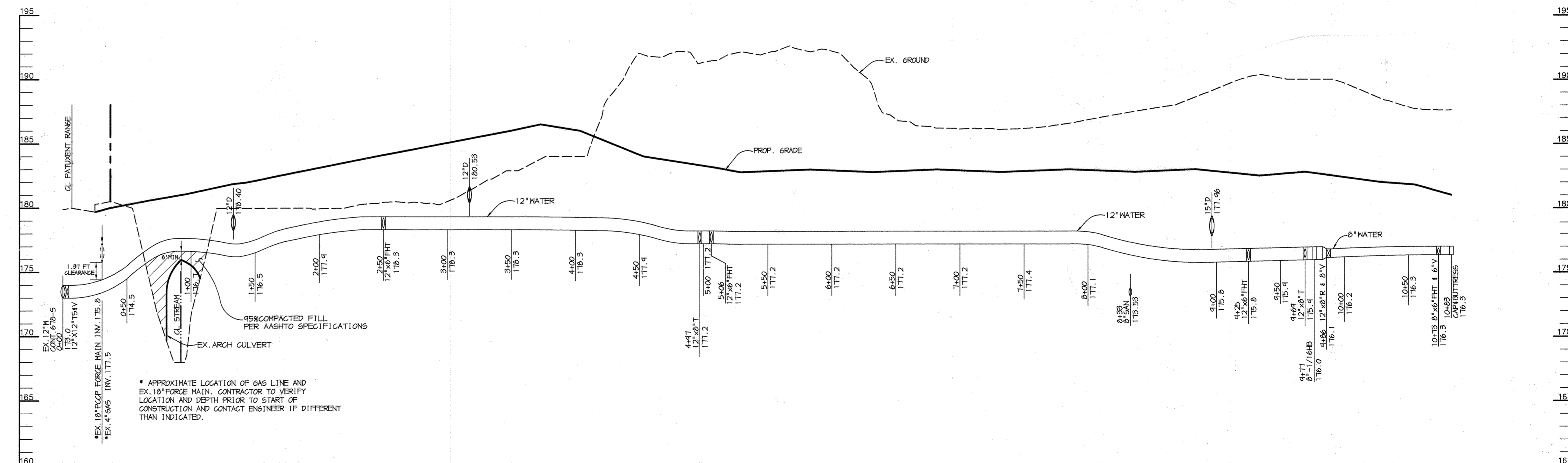
WATER PROFILE FOR BUILDING 'B'

SCALE:
HOR. - 1"=50'
VERT. - 1"=5'



SEWER PROFILE

SCALE:
HOR. - 1"=50'
VERT. - 1"=5'



WATER PROFILE

SCALE:
HOR. - 1"=50'
VERT. - 1"=5'

F:\PROJECT\00099\WS3.dwg F:\1 Dec 01 10:51:51 2000 Riemer Muegge & Associates, Inc.

DEPARTMENT OF PUBLIC WORKS HOWARD COUNTY, MARYLAND R. M. Bennett CHIEF, BUREAU OF UTILITIES 12-4-00 DATE		DEPARTMENT OF PLANNING & ZONING HOWARD COUNTY, MARYLAND M. Damm CHIEF, DEVELOPMENT ENGINEERING DIVISION 12/13/00 DATE		RIEMER MUEGGE a division of Patton Harris Rust & Associates, pc ENGINEERS & SURVEYORS & PLANNERS LANDSCAPE ARCHITECTS & ENVIRONMENTAL SPECIALISTS 8818 Centre Park Drive, Columbia, MD 21045 • Tel 410.997.8000 fax 410.997.8282 DRAWING: 00099/WS3.DWG ARTHUR E. MUEGGE #8707		DES: K.E.V. DRN: DAM CHK: C.J.R. DATE: 11/16/00 BY NO. REVISION DATE		PROFILES OF WATER AND SEWER MAINS 600' SCALE MAP NO. 48 BLOCK NO. 3 & 9		DORSEY RUN INDUSTRIAL PARK PARCEL C 6th ELECTION DISTRICT HOWARD COUNTY, MARYLAND CONTRACT # 24-3911-D SCALE AS SHOWN SHEET 3 OF 3	
---	--	--	--	---	--	--	--	---	--	---	--