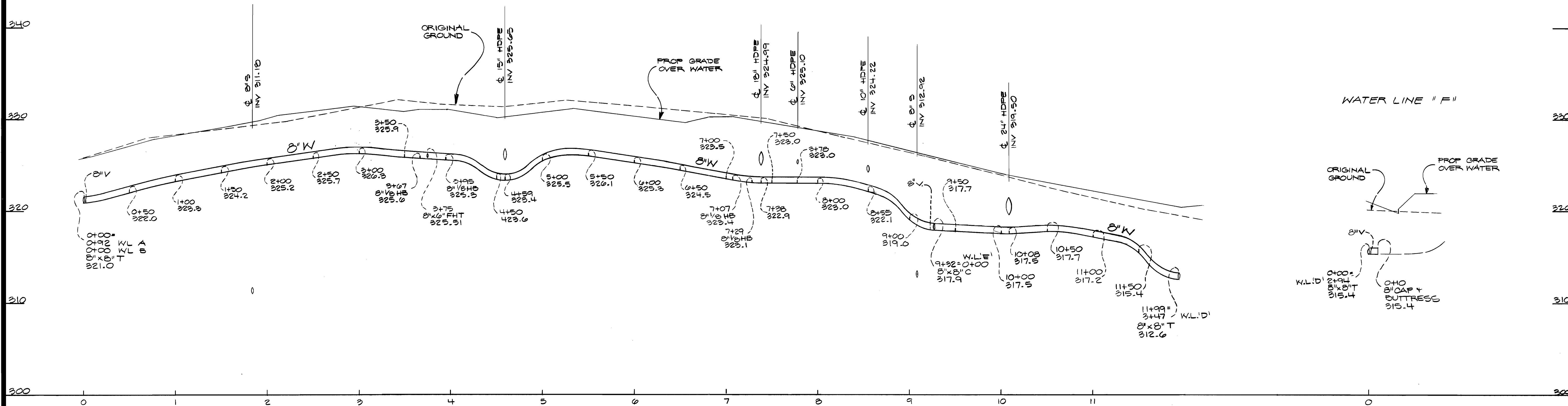
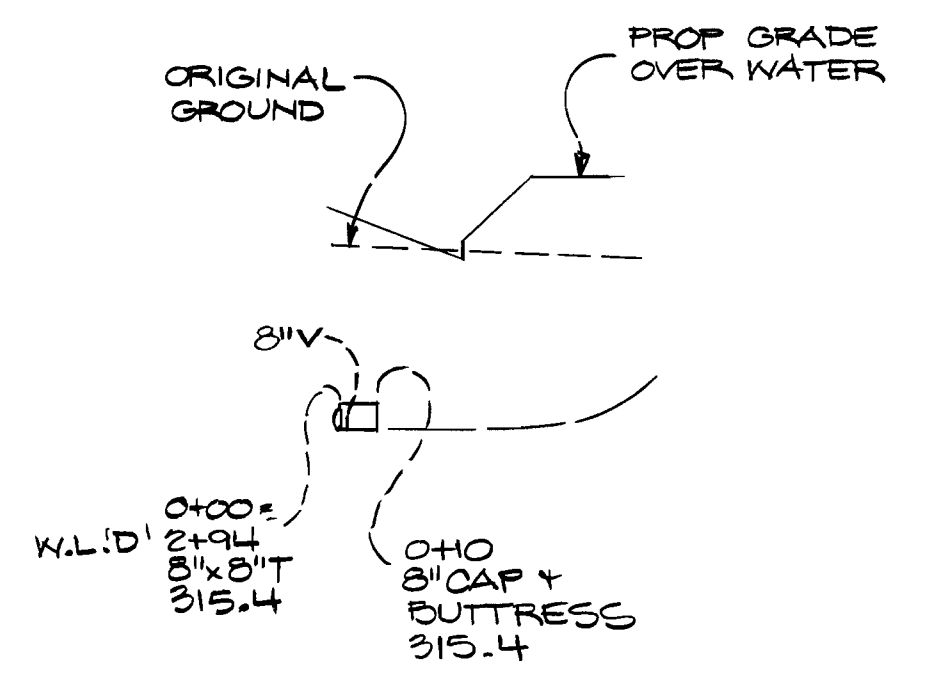


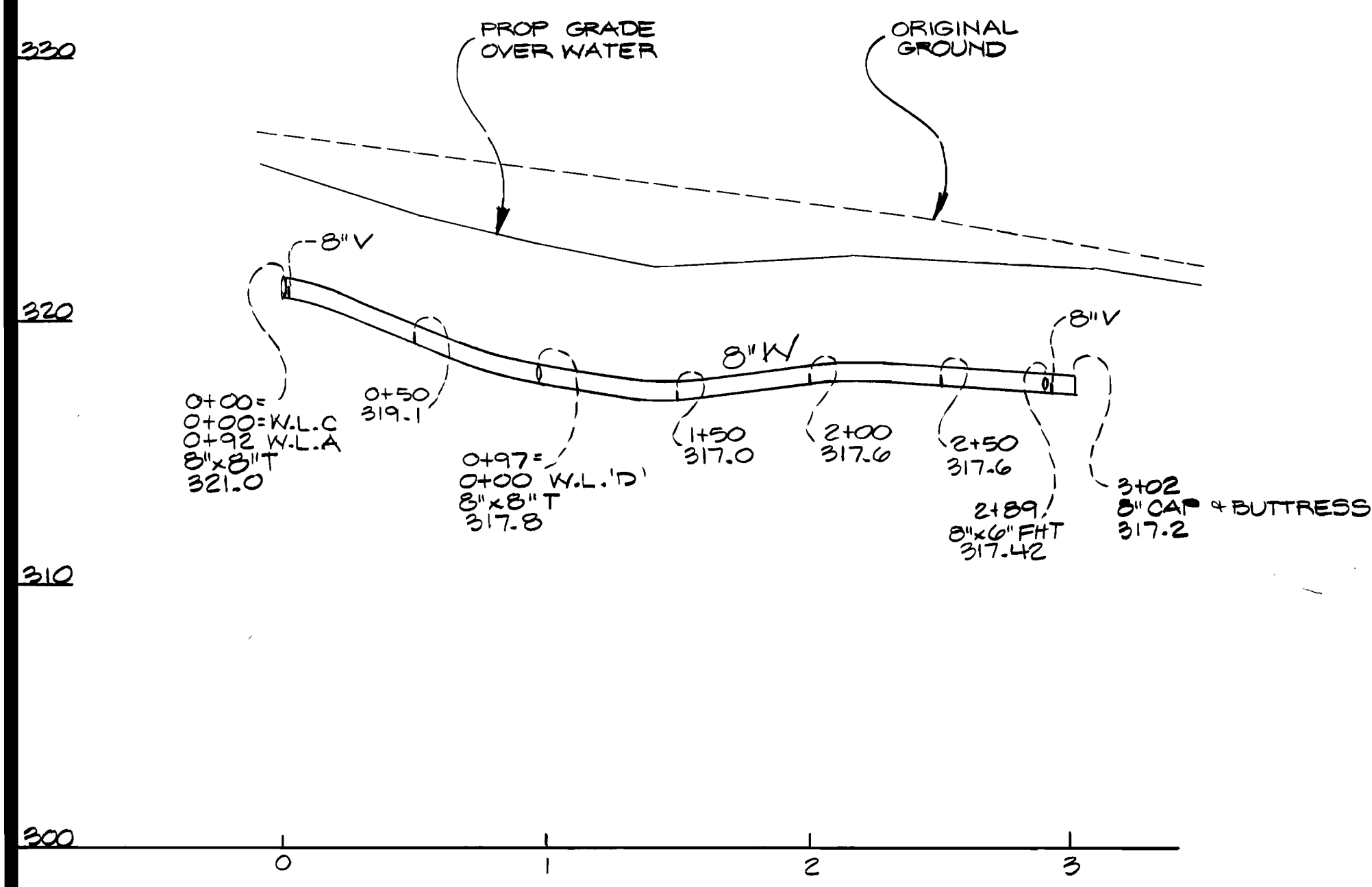
WATER LINE "C"



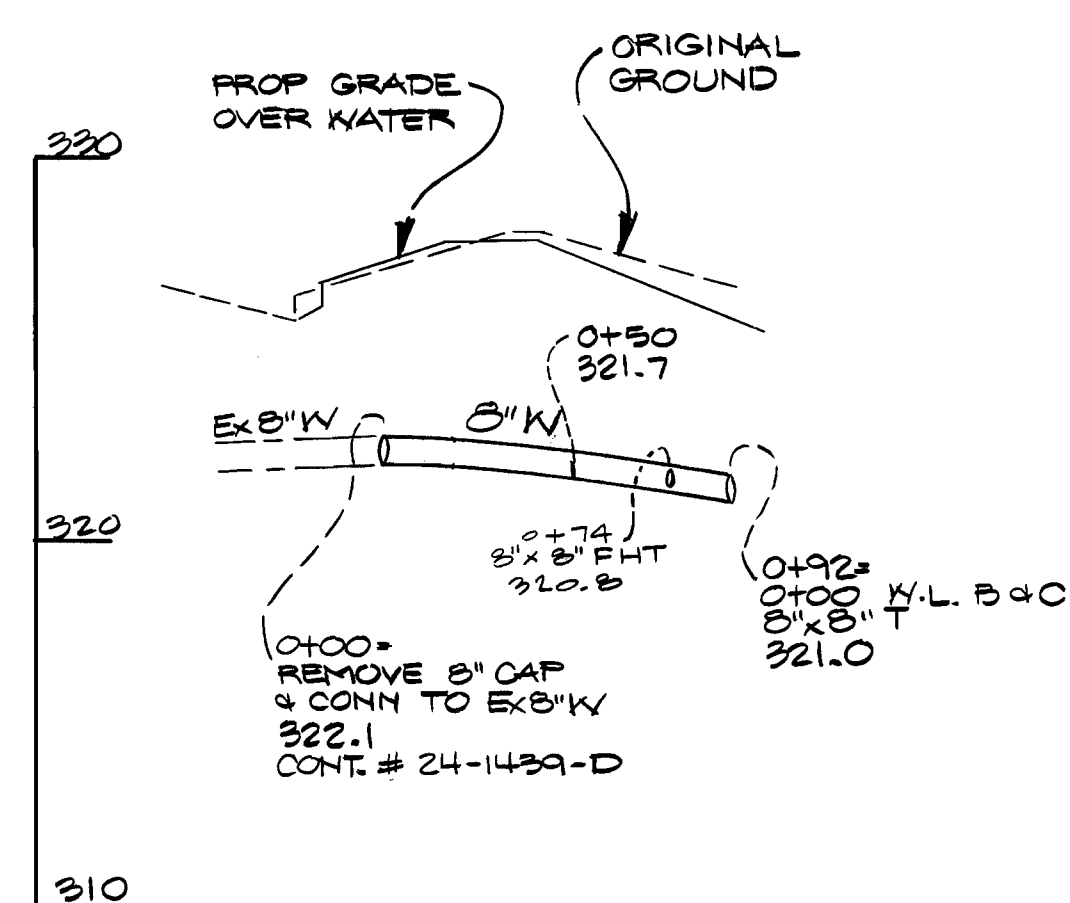
WATER LINE "F"



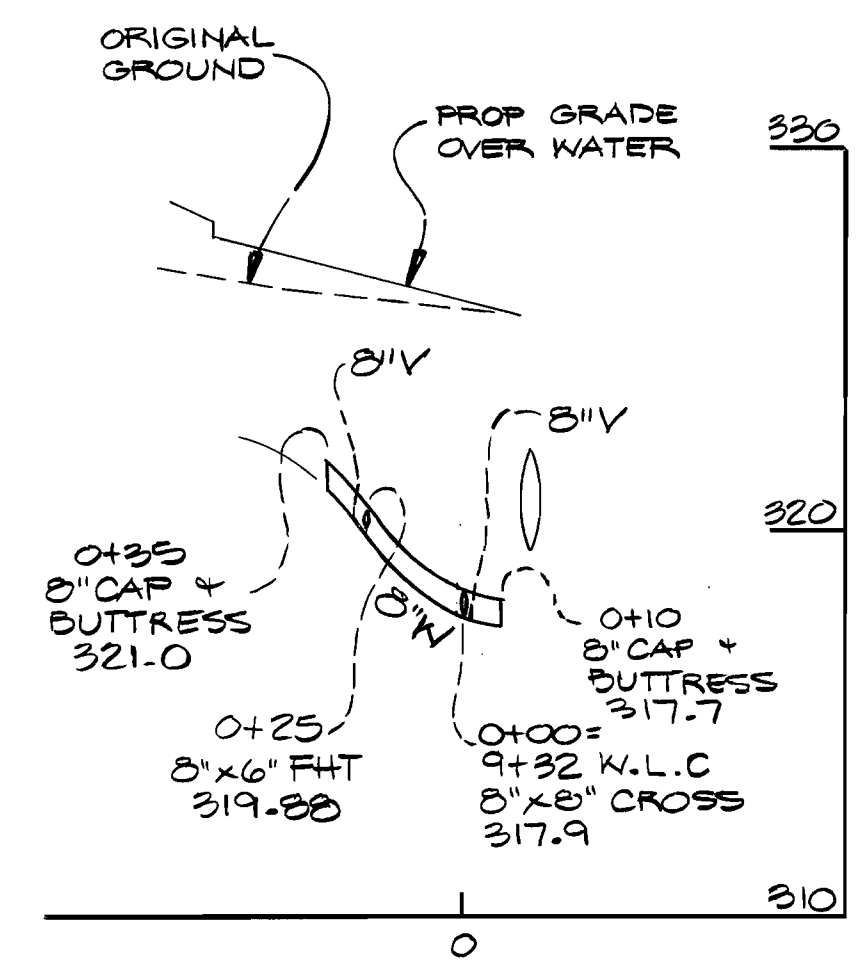
WATER LINE "B"



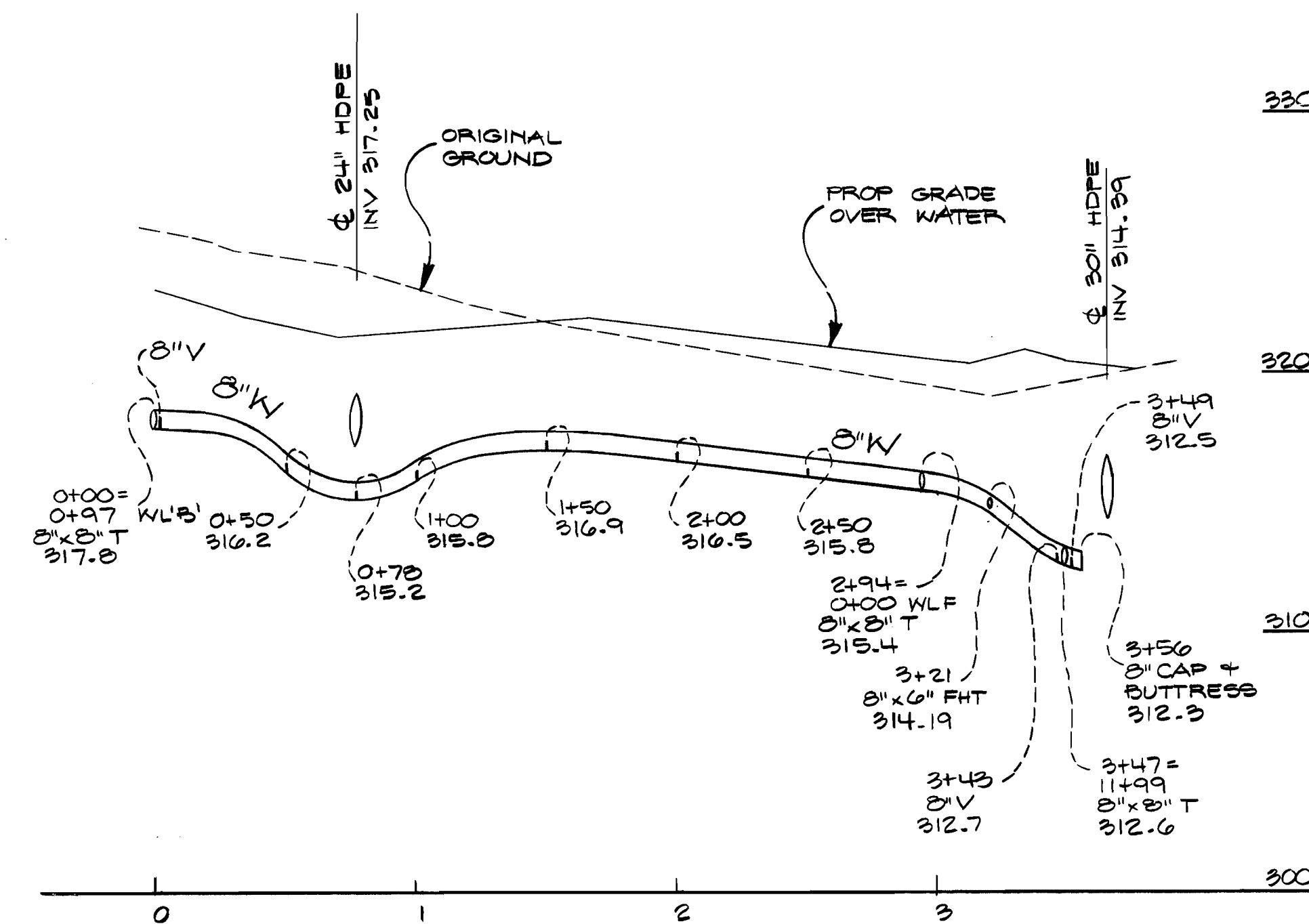
WATER LINE "A"



WATER LINE "E"



WATER LINE "D"



PROFILE SCALE
Hor. 1" = 50'
Vert. 1" = 5'

DEPARTMENT OF PUBLIC WORKS
HOWARD COUNTY, MARYLAND
9-12-00

DEPARTMENT OF PLANNING AND ZONING
HOWARD COUNTY, MARYLAND
9/15/00

GLW GUTSCHICK LITTLE & WEBER, P.A.
CIVIL ENGINEERS, LAND SURVEYORS, LAND PLANNERS, LANDSCAPE ARCHITECTS
3909 NATIONAL DRIVE - SUITE 250 - BURTONSVILLE OFFICE PARK
BURTONSVILLE, MARYLAND 20886
TEL: 301-421-4024 BAL: 410-880-1820 DC/VA: 301-989-2524 FAX: 301-421-4186



DES: BSL				
DRN: RSP				
CHK:				
DATE: 9/1/00	BY: NO	REVISION	DATE	

WATER MAIN PROFILES
600' SCALE MAP NO. 3743 BLOCK NO. 19/1

COLUMBIA GATEWAY, PARCELS D-4 & D-5
HOWARD COUNTY, MARYLAND
ELECTION DISTRICT No. 6
CONTRACT No. 44-3907-D
GLW FILE No. 00052
SCALE AS SHOWN
SHEET 2 OF 3

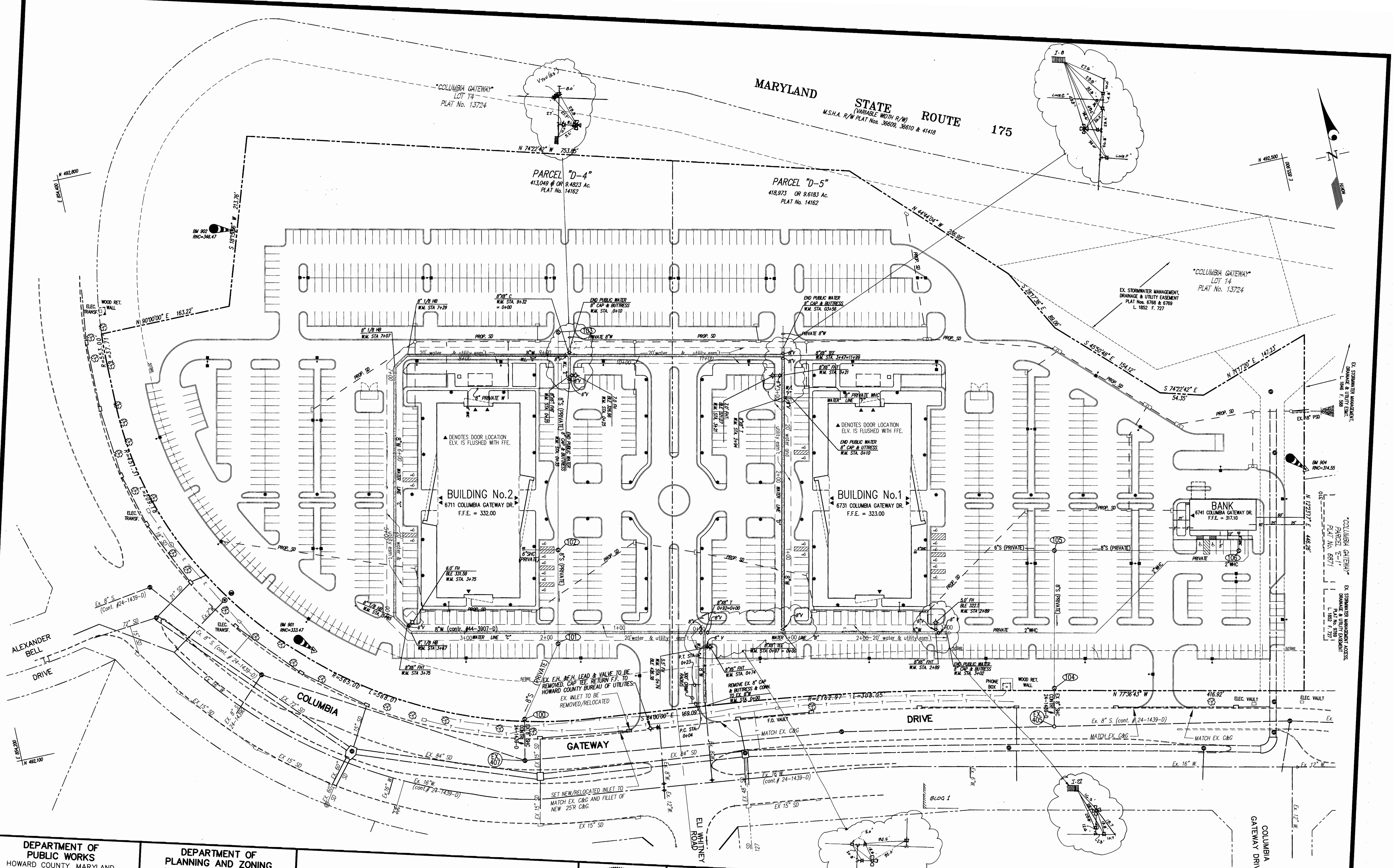
MARYLAND STATE ROUTE 175
 (VARIABLE WIDTH R/W)
 M.S.H.A. R/W PLAT Nos. 36609, 36610 & 41418

"COLUMBIA GATEWAY" LOT 14
 PLAT No. 13724

PARCEL "D-4"
 413,049 ± OR 9,482.3 Ac.
 PLAT No. 14162

PARCEL "D-5"
 418,973 ± OR 9,618.3 Ac.
 PLAT No. 14162

"COLUMBIA GATEWAY" LOT 14
 PLAT No. 13724



DEPARTMENT OF PUBLIC WORKS
 HOWARD COUNTY, MARYLAND
 Chief, Bureau of Utilities

DEPARTMENT OF PLANNING AND ZONING
 HOWARD COUNTY, MARYLAND
 Chief, Development Engineering Division

GLW GUTSCHICK LITTLE & WEBER, P.A.
 CIVIL ENGINEERS, LAND SURVEYORS, LAND PLANNERS, LANDSCAPE ARCHITECTS
 3809 NATIONAL DRIVE - SUITE 250 - BURTONSVILLE OFFICE PARK
 BURTONSVILLE, MARYLAND 20866
 TEL: 301-421-4024 FAX: 301-421-4186



DES:	BSL
DRN:	ROS
CHK:	CKG
DATE:	9/1/00
BY:	NO
REVISION:	1 AS-BUILT CONDITIONS ADDED TO PLAN
DATE:	8/10/01

WATER EXTENSION PLAN

COLUMBIA GATEWAY, PARCELS D-4 & D-5
 HOWARD COUNTY, MARYLAND
 ELECTION DISTRICT No. 6

SCALE
 1"=50'

CONTRACT No. 44-3007

SHEET

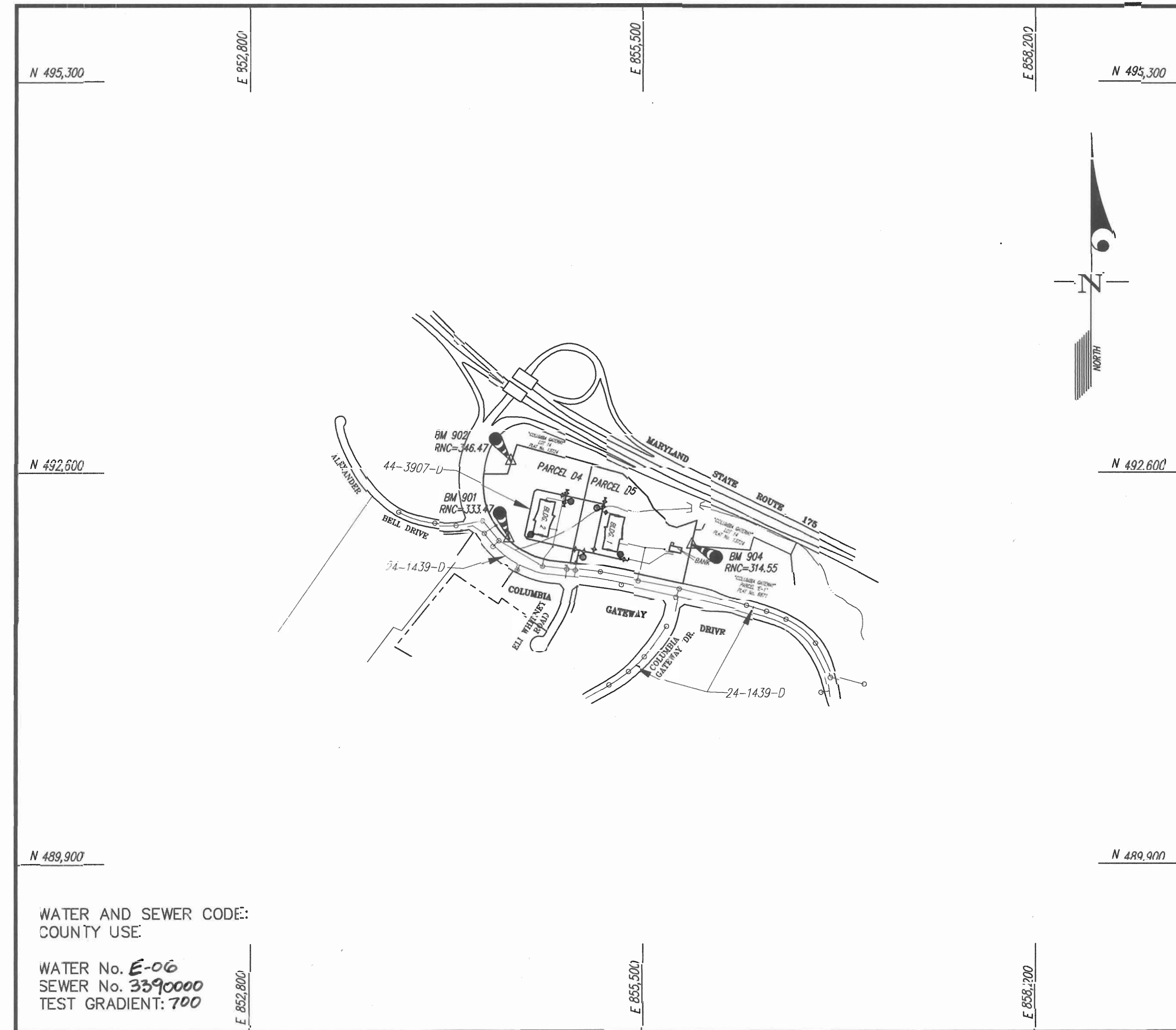
GLW FILE #00-052
 00052ws1.dwg

600' SCALE MAP NO. 37/43 BLOCK NO. 197

QUANTITIES				
ITEMS	QUANTITIES ESTIMATED	AS-BUILT		
		QUANTITIES	TYPE	MANUFACTURER/SUPPLIER
8" WATER	2004 L.F.	2134 L.F.	D.I.P.	CHIFFIN PIPE
8" VALVE	9 EA.	10 EA.	CLASS 52	HOUGHES SUPPLY
8" - 1/8" HB	4 EA.	4 EA.	WATER VALVE	HOUGHES SUPPLY
6" WATER	51 L.F.	58 L.F.	D.I.P. M.J.	HOUGHES SUPPLY
6" VALVE	5 EA.	5 EA.	CLASS 52	HOUGHES SUPPLY
8" X 6" FHT	5 EA.	5 EA.	DIP - M.J.	HOUGHES SUPPLY
FIRE HYDRANT	5 EA.	5 EA.	WATER VALVE	HOUGHES SUPPLY
8" CAP & BUTTRESS	5 EA.	4 EA.	DIP - M.J.	HOUGHES SUPPLY
8" X 8" CROSS	1 EA.	1 EA.	DIP - M.J.	HOUGHES SUPPLY
8" X 8" TEE	3 EA.	4 EA.	DIP - M.J.	HOUGHES SUPPLY
8" Sewer Main (PVC)	100 L.F.			
8" DIP	070 L.F.			
4" Sewer Manhole	4 EA.			
Type 'A' Drop Conn.	1 EA.			
6" Sewer House Conn.	8 L.F.			
Type 'B' Drop Conn.	1 EA.			

NAME OF UTILITY CONTRACTOR: C. J. MILLER

SURVEY AND DRAFTING DIV.	CHECKBOX: _____
	AS-BUILT DATE: _____



VICINITY MAP
SCALE: 1"=600'

CONTRACT No. 24-3907-D
COLUMBIA GATEWAY
PARCELS 'D4' and 'D5'
HOWARD COUNTY, MARYLAND
DEPARTMENT OF PUBLIC WORKS

TYPE OF BUILDING	GENERAL OFFICES & BANK
NUMBER OF UNITS	3 (BUILDINGS)
NUMBER OF S.H.C.'s	3
NUMBER OF W.H.C.'s	3
DRAINAGE AREA	Little Patuxent
TREATMENT PLANT	Little Patuxent Water Quality Mgmt Ctr.

Via Dorsey Pumping Station

GENERAL NOTES

- PART I
- Approximate location of existing mains are shown. The contractor shall take all necessary precautions to protect existing mains and services and maintain uninterrupted supply. Any damage incurred shall be repaired immediately to the satisfaction of the Engineer at the Contractor's expense.
 - All horizontal controls are based on Maryland State Coordinates [North American Datum 1983 (NAD '83)].
 - All vertical controls are based on U.S.G.S. data.
 - All Pipe elevations shown are invert elevations.
 - Clear all utilities by a minimum of 6'. Clear all poles by 2'-0" minimum or tunnel as required. The owner has contacted the utility companies and has made arrangements for bracing of poles as shown on the drawings. In the event the contractor's work requires the bracing of additional poles, any cost incurred by the owner for bracing of additional poles or damages shall be deducted from money owed the contractor. The contractor shall coordinate with the utility companies to schedule the bracing of the poles.
 - For details not shown on the drawings, and for materials and construction methods use Howard County Design Manual, Volume IV, Standard Specifications and Detail for Construction (Latest Edition). The contractor shall have a copy of Volume IV on the job.
 - Where test pits have been made on existing utilities, they are noted by the symbol at the location of the test pit. A note or notes containing the results of the test pit or pits is included on the drawings. Existing utilities in the vicinity of the proposed work for which test pits have not been dug shall be located by the contractor two weeks in advance of construction operations at his own expense.
 - Contractor shall notify the following utility companies or agencies at least (5) working days before starting work shown on these plans:

State Highway Administration	531-5533
BGE Contractor Services	850-4620
BGE Under Ground Damage Control	787-9068
Miss Utility	1-800-257-7777
Colonial Pipe Co.	795-1390
Howard County Department of Public Works Bureau of Utilities	313-4900
 - Trees and shrubs are to be protected from damage to maximum extent. Trees and shrubs located within the construction strip are not to be removed or damaged by the contractor.
 - Contractor shall remove trees, stumps and roots along line of excavation. Payment for such removal shall be included in the unit price bid for construction of the main.
 - The Contractor shall notify the Bureau of Highways, Howard County, at (410) 313-2450 at least five (5) working days before any open cut of any County road or boring/jacking operation on County roads for laying water/sewer mains or house connections. The approval of these drawings will constitute compliance with DPW requirement per Section 18.114(a) of the Howard County Code.
- PART II - WATER
- All water mains to be D.I.P. Class 52 unless otherwise noted.
 - Tops of all water mains to have a minimum of 3-1/2' cover unless otherwise noted.
 - Valves adjacent to tees shall be strapped to tees.
 - All fittings shall be buttressed or anchored with concrete in accordance with the Standard Details unless otherwise provided for on the drawings.
 - Fire hydrants shall be set to the bury line elevations shown on the drawings. All fire hydrants shall be restrained and buttressed with concrete in accordance with the Standard Details. Soil around the fire hydrant shall be compacted in accordance with Section 1000 and 1005 of the Standard Specifications.
 - The contractor shall not operate any water main valves on the existing water system.
 - All water house connections shall be for inside meter setting unless otherwise noted on plans or in specifications.
 - For sprinkler system for all townhomes or multi-family dwelling units should have a minimum of 1' connection with a 3/4" meter.
- Part III - Sewer
- All Sewer Mains shall be D.I.P. or P.V.C. unless otherwise noted.
 - All manholes shall be 4'-0" inside diameter unless otherwise noted.
 - Force mains shall be D.I.P. only.
 - Manholes shown with the 12" and 16" walls are for brick manholes only.
 - Manholes designated W.T. in plan and profile shall have watertight frame and cover, standard detail 65.52. Where watertight manhole frames and covers are used, set top of frame 1'-0" above finished grade unless otherwise noted on the drawings.
 - House(s) with the symbol "C.N.S." indicates the cellar cannot be served.

Sediment Control Measures will be implemented in accordance with Section 219 of the Specifications & with the SITE DEVELOPMENT PLAN SDP-01-26 ; drawings 6 thru 8 for Sediment & Erosion Control.

REVIEWED FOR HOWARD SOIL CONSERVATION DISTRICT AND MEETS TECHNICAL REQUIREMENT.

John Robertson 9/12/00
SIGNATURE DATE

U.S.D.A. NATURAL RESOURCES CONSERVATION SERVICE

THIS DEVELOPMENT PLAN IS APPROVED FOR SOIL EROSION AND SEDIMENT CONTROL BY THE HOWARD SOIL CONSERVATION DISTRICT.

APPROVED: *Cheryl Simmons* 9/12/00
DATE

HOWARD COUNTY

DEPARTMENT OF PUBLIC WORKS
HOWARD COUNTY, MARYLAND

Robert Beaman 9-12-00
CHIEF, BUREAU OF UTILITIES DATE

DEPARTMENT OF PLANNING AND ZONING
HOWARD COUNTY, MARYLAND

Cheryl Simmons 9/12/00
CHIEF, DEVELOPMENT ENGINEERING DIVISION DATE

GLW GUTSCHICK LITTLE & WEBER, P.A.
CIVIL ENGINEERS, LAND SURVEYORS, LAND PLANNERS, LANDSCAPE ARCHITECTS
3909 NATIONAL DRIVE - SUITE 250 - BURTONSVILLE OFFICE PARK
BURTONSVILLE, MARYLAND 20866
TEL: 301-421-4024 BALTE 410-880-1820 DC/VA 301-989-2524 FAX 301-421-4186



DES:	
DRN:	
CHK:	
DATE: 9/11/00	BY: NO
REVISION	
1	AS-BUILT CONDITIONS ADDED TO PLAN 8/8/01

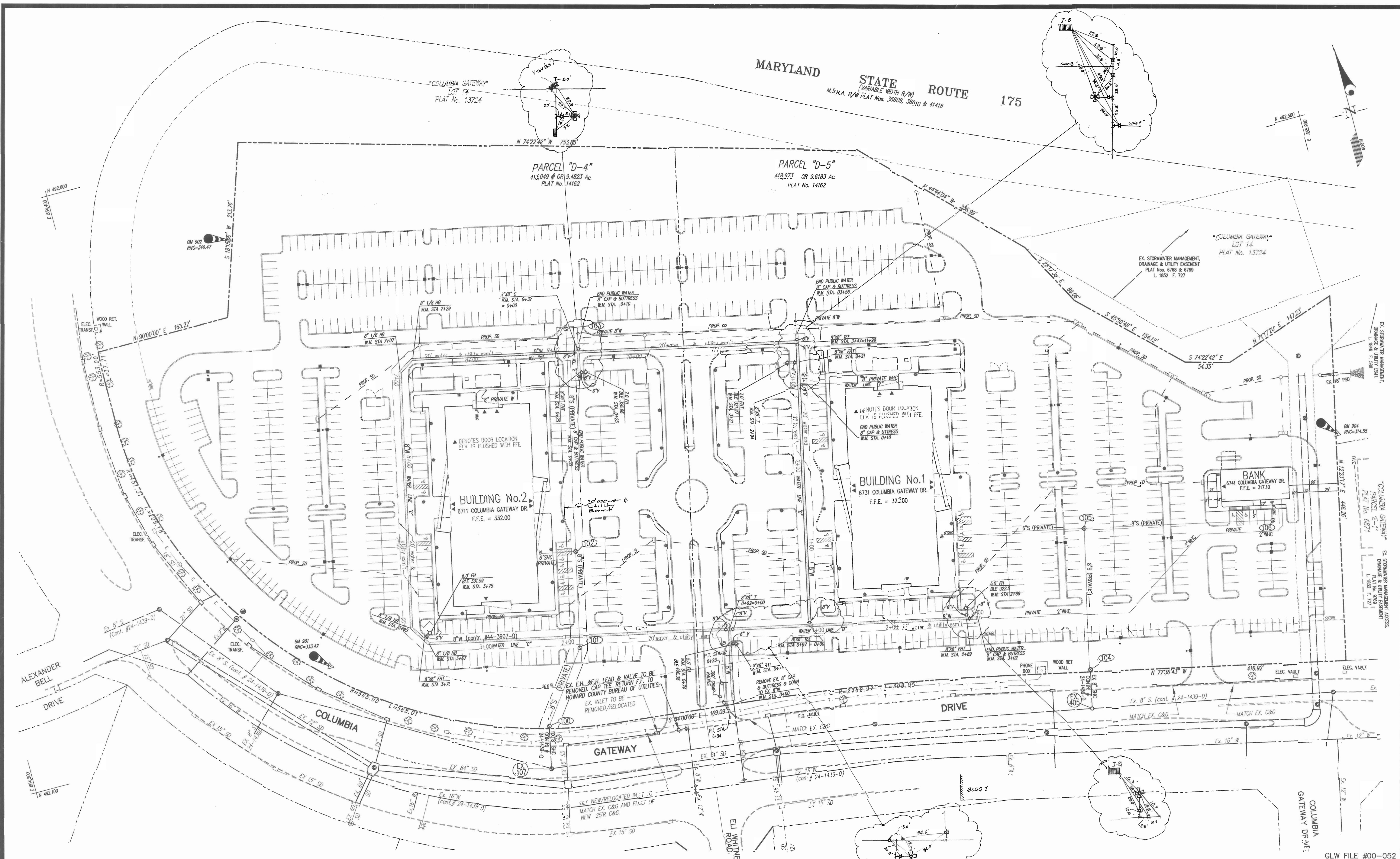
Water & Sewer
EXTENSION PLAN
AND PROFILES
300' SCALE MAP NO. 57/42 19/1

COLUMBIA GATEWAY, PARCELS D-4 & D-5
HOWARD COUNTY, MARYLAND
ELECTION DISTRICT No. 6

CONTRACT No. 24-3907-D

GLW FILE #00-052
00052wsc.dwg

SCALE AS SHOWN
SHEET 1 OF 3



GLW FILE #00-052
00052ws1.dwg

DEPARTMENT OF
PUBLIC WORKS
HOWARD COUNTY, MARYLAND

Robert Berger
CHIEF, BUREAU OF UTILITIES

9-12-07
DATE

DEPARTMENT OF
PLANNING AND ZONING
HOWARD COUNTY, MARYLAND

John W. ...
CHIEF, DEVELOPMENT ENGINEERING DIVISION

9/13/07
DATE

GLW GUSCHICK LITTLE & WEBER, P.A.
CIVIL ENGINEERS, LAND SURVEYORS, LAND PLANNERS, LANDSCAPE ARCHITECTS
3909 NATIONAL DRIVE - SUITE 250 - BURTONSVILLE OFFICE PARK
BURTONSVILLE, MARYLAND 20866
TEL: 301-421-4024 BAL: 410-880-1820 DC/VA: 301-989-2524 FAX: 301-421-4188



DES: BSL	DRN: ROS	CHK: CKG	DATE: 9/11/07
REVISION 1 added sewer count AS BUILT CONDITIONS ADDED TO PLAN 8/10/07 DATE			

Water & Sewer
Extension Plan

600 SCALE MAP NO. 37/43 BLOCK NO. 19/1

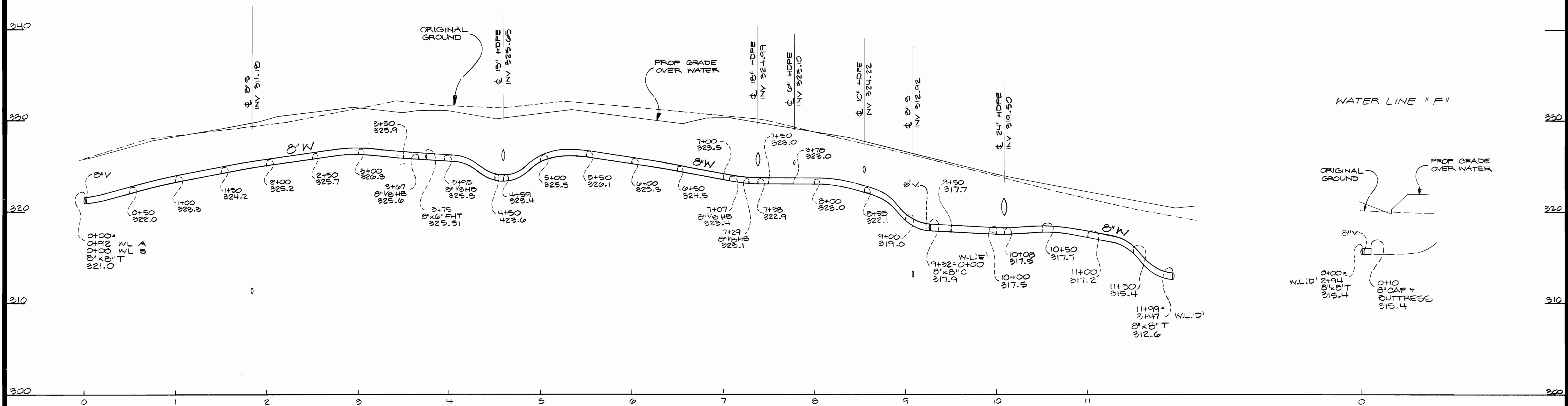
COLUMBIA GATEWAY, PARCELS D-4 & D-5
HOWARD COUNTY, MARYLAND
ELECTION DISTRICT No. 6

CONTRACT No. 24-3907-D

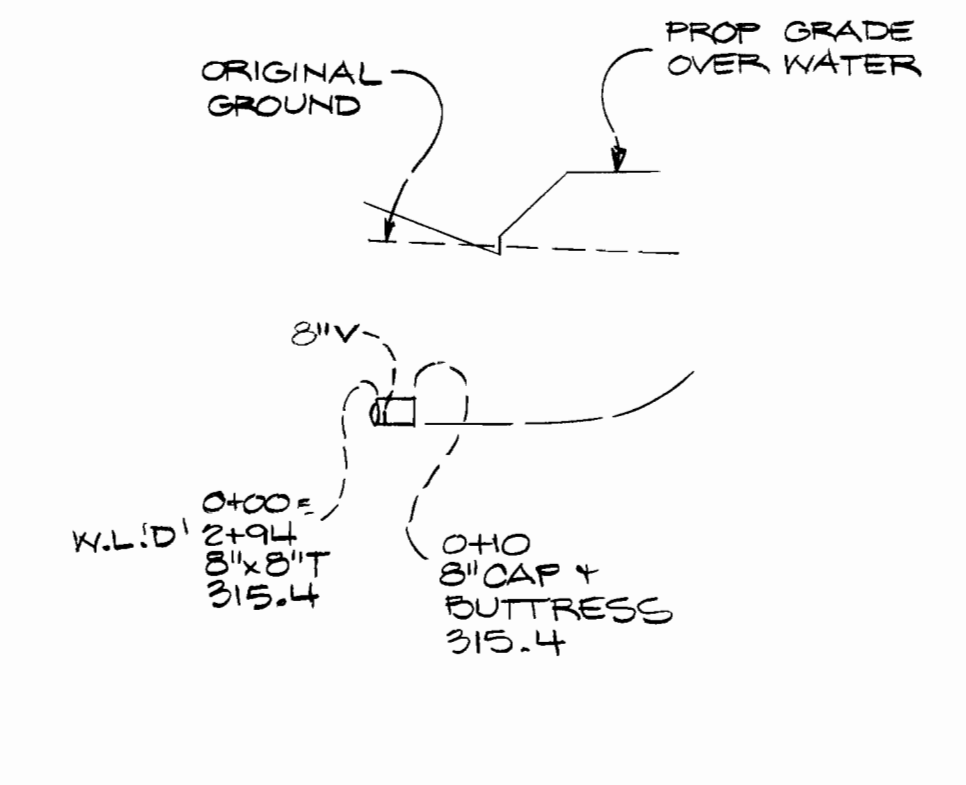
SCALE
1"=50'

SHEET
2 OF 3

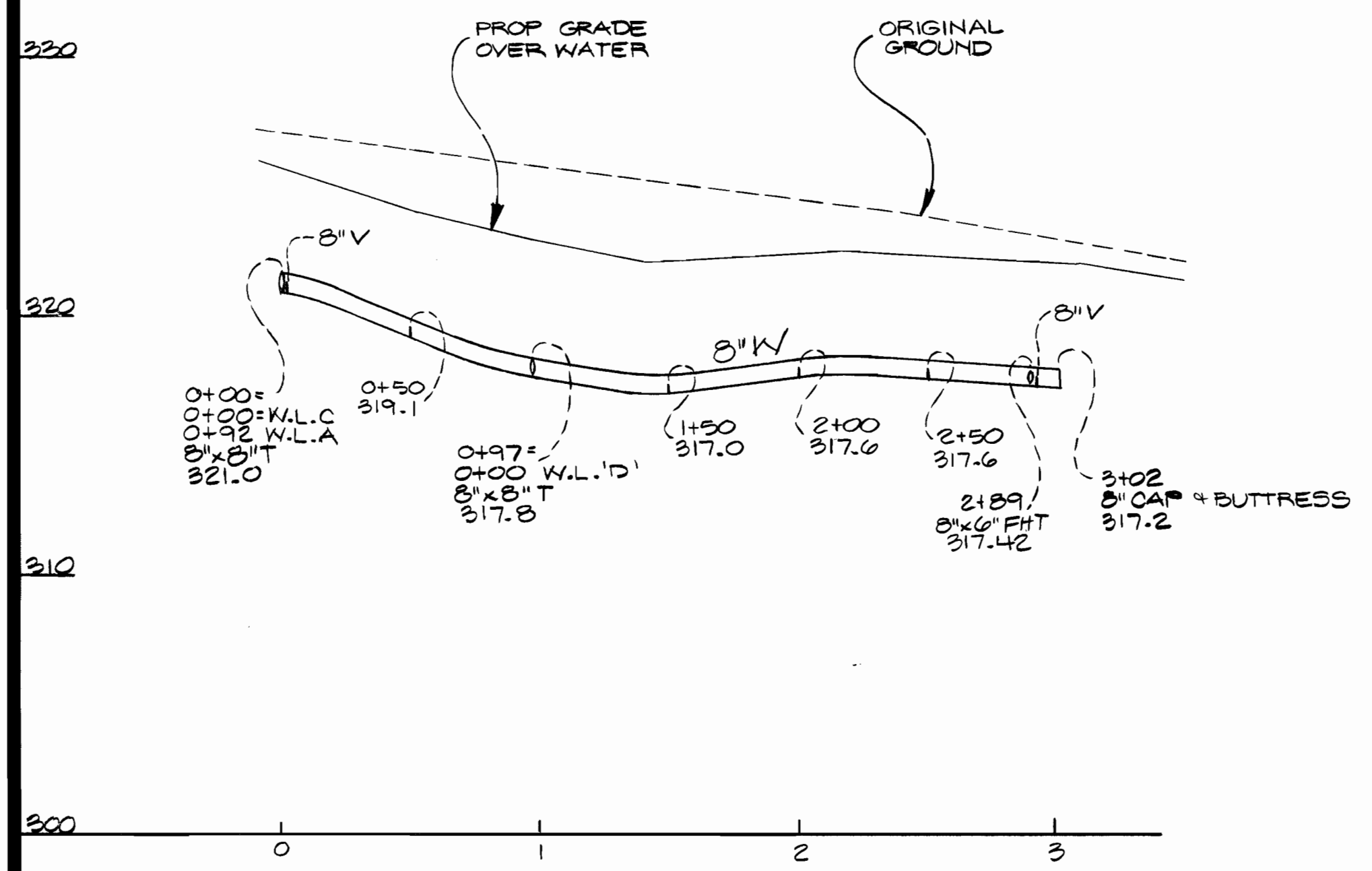
WATER LINE "C"



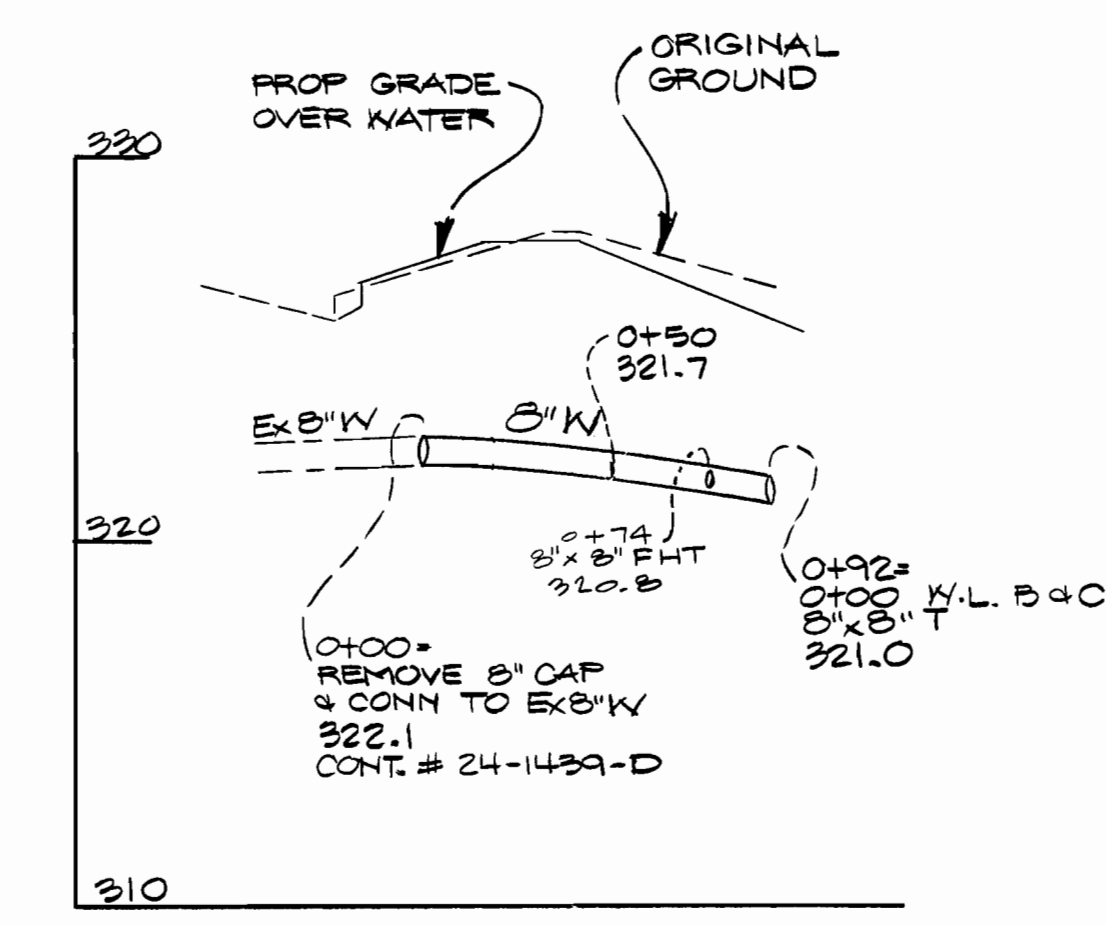
WATER LINE "F"



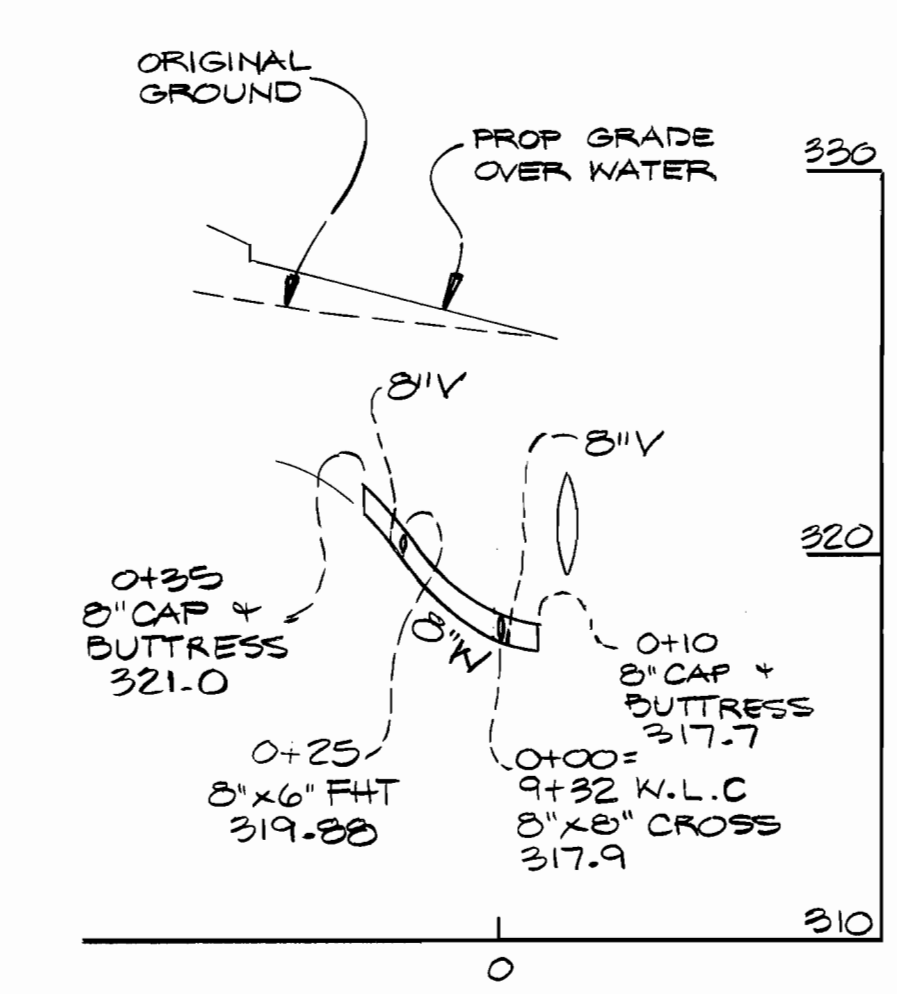
WATER LINE "B"



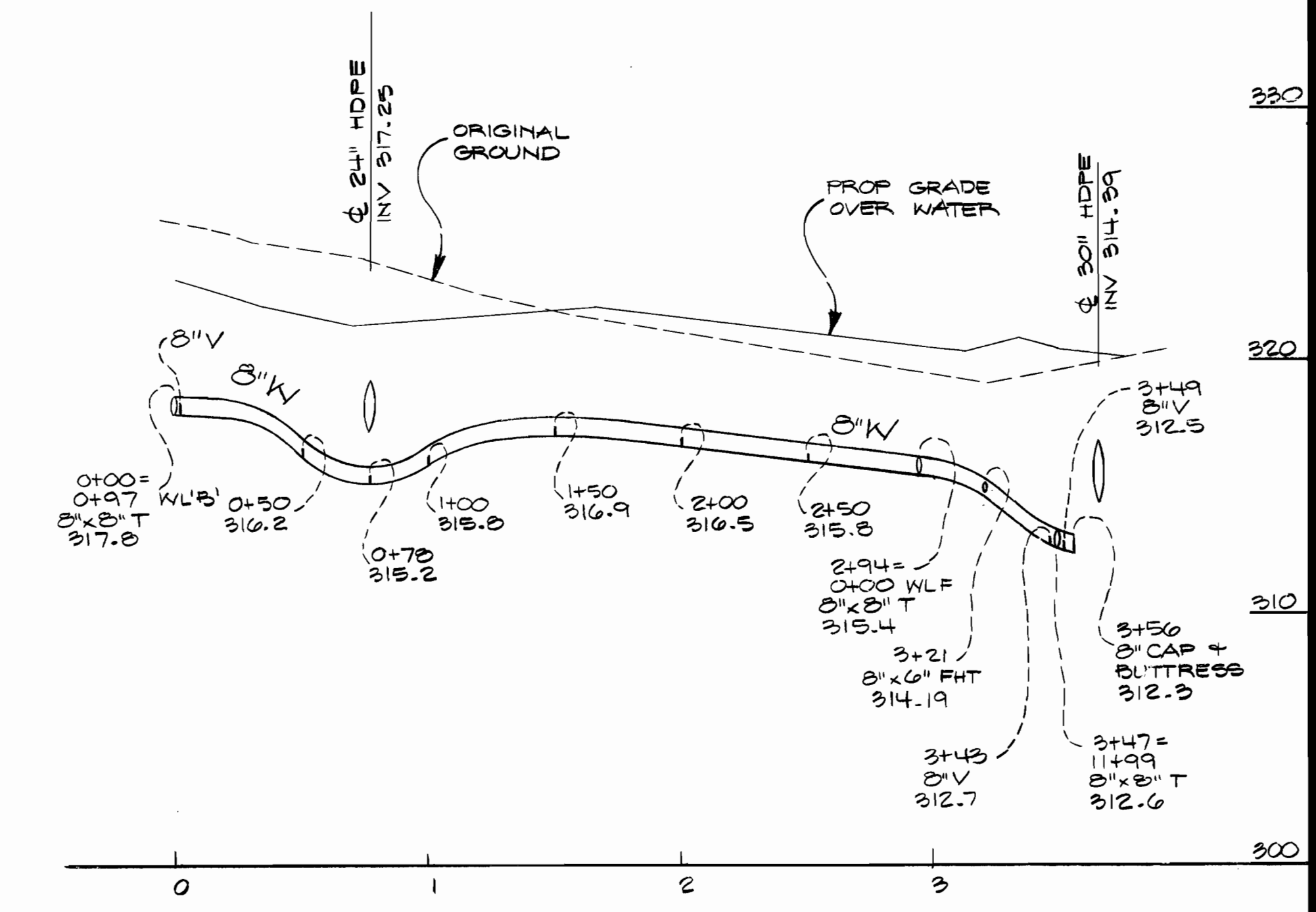
WATER LINE "A"



WATER LINE "E"



WATER LINE "D"



PROFILE SCALE
Hor. 1" = 50'
Vert. 1" = 5'

DEPARTMENT OF PUBLIC WORKS
HOWARD COUNTY, MARYLAND
9-12-00

DEPARTMENT OF PLANNING AND ZONING
HOWARD COUNTY, MARYLAND
9/15/00

GLW GUTSCHICK LITTLE & WEBER, P.A.
CIVIL ENGINEERS, LAND SURVEYORS, LAND PLANNERS, LANDSCAPE ARCHITECTS
3809 NATIONAL DRIVE - SUITE 250 - BURTONSVILLE OFFICE PARK
BURTONSVILLE, MARYLAND 20886
TEL: 301-421-4024 BAL: 410-880-1820 DC/VA: 301-989-2524 FAX: 301-421-4186



DES: BSL				
DRN: RSP				
CHK:				
DATE: 9/1/00	BY: NO	REVISION:	DATE:	

WATER MAIN PROFILES
600' SCALE MAP NO. 37/43 BLOCK NO. 19/1

COLUMBIA GATEWAY, PARCELS D6-D9
HOWARD COUNTY, MARYLAND
ELECTION DISTRICT No. 6
CONTRACT No. 24-3907-D

GLW FILE No. 00052
SCALE AS SHOWN
SHEET 2 OF 4

QUANTITIES				
ITEMS	QUANTITIES ESTIMATED	AS-BUILT		
		QUANTITIES	TYPE	MANUFACTURER/SUPPLIER
8" WATER	2004 L.F.	2134 L.F.	D.I.P.	CHIFFRA PIPE
8" VALVE	9 EA.	10 EA.	CLASS 52	HUGHES SUPPLY
8"-1/8" HB	4 EA.	4 EA. PUBLIC	RESISTANT SEAT GATE	REINFORCED CONCRETE
6" WATER	51 L.F.	58 L.F.	D.I.P. M.O.	TYLER
6" VALVE	5 EA.	5 EA.	D.I.P.	HUGHES SUPPLY
8"X6" FHT	5 EA.	5 EA.	RESISTANT SEAT GATE	REINFORCED CONCRETE
FIRE HYDRANT	5 EA.	5 EA.	D.I.P. - M.J.	TYLER
8" CAP & BUTTRESS	5 EA.	4 EA.	SEA.	REINFORCED CONCRETE
8"X8" CROSS	1 EA.	1 EA.	D.I.P. - M.J.	TYLER
8"X8" TEE	3 EA.	4 EA.	D.I.P. - M.J.	TYLER
8" Sewer Main (PVC)	100 L.F.			
8" DIP	000 L.F.			
4" Sewer Manhole	4 EA.			
Type 'A' Drop Conn.	1 EA.			
6" Sewer House Conn.	8 L.F.			
Type 'B' Drop Conn.	1 EA.			
NAME OF UTILITY CONTRACTOR: C.J. MILLER				
SURVEY AND DRAFTING DIV.		CHECKBOX:		
		AS-BUILT DATE:		

TYPE OF BUILDING	GENERAL OFFICES & BANK
NUMBER OF UNITS	3 (BUILDINGS)
NUMBER OF S.H.C.'s	3
NUMBER OF W.H.C.'s	3
DRAINAGE AREA	Little Patuxent
TREATMENT PLANT	Little Patuxent Water Quality Mgmt Ctr.

Via Dorsey Pumping Station



VICINITY MAP
SCALE: 1"=600'

WATER AND SEWER CODE:
COUNTY USE
WATER No. E-06
SEWER No. 3390000
TEST GRADIENT: 700

CONTRACT No. 24-3907-D
COLUMBIA GATEWAY
PARCELS 'D6' thru 'D9'
HOWARD COUNTY, MARYLAND
DEPARTMENT OF PUBLIC WORKS

GENERAL NOTES

- PART I
- Approximate location of existing mains are shown. The contractor shall take all necessary precautions to protect existing mains and services and maintain uninterrupted supply. Any damage incurred shall be repaired immediately to the satisfaction of the Engineer at the Contractor's expense.
 - All horizontal controls are based on Maryland State Coordinates [North American Datum 1983 (NAD '83)].
 - All vertical controls are based on U.S.G.S. data.
 - All pipe elevations shown are invert elevations.
 - Clear all utilities by a minimum of 6". Clear all poles by 2'-0" minimum or tunnel as required. The owner has contacted the utility companies and has made arrangements for bracing of poles as shown on the drawings. In the event the contractor's work requires the bracing of additional poles or damages shall be deducted from money owed the contractor. The contractor shall coordinate with the utility companies to schedule the bracing of the poles.
 - For details not shown on the drawings, and for materials and construction methods use Howard County Design Manual, Volume IV, Standard Specifications and Detail for Construction (Latest Edition). The contractor shall have a copy of Volume IV on the job.
 - Where test pits have been made on existing utilities, they are noted by the symbol at the location of the test pit. A note or notes containing the results of the test pit or pits is included on the drawings. Existing utilities in the vicinity of the proposed work for which test pits have not been dug shall be located by the contractor two weeks in advance of construction operations at his own expense.
 - Contractor shall notify the following utility companies or agencies at least (5) working days before starting work shown on these plans:

State Highway Administration	531-5533
BGE Contractor Services	850-4620
BGE Under Ground Damage Control	787-9068
Miss Utility	1-800-257-7777
Colonial Pipeline Co.	795-1390
Howard County Department of Public Works Bureau of Utilities	313-4900
 - Trees and shrubs are to be protected from damage to maximum extent. Trees and shrubs located within the construction strip are not to be removed or damaged by the contractor.
 - Contractor shall remove trees, stumps and roots along line of excavation. Payment for such removal shall be included in the unit price bid for construction of the main.
 - The contractor shall notify the Bureau of Highways, Howard County, at (410) 313-2450 at least five (5) working days before any open cut of any County road or boring/jacking operation on County roads for laying water/sewer mains or house connections. The approval of these drawings will constitute compliance with DPW requirement per Section 18.114(a) of the Howard County Code.
- PART II - WATER
- All water mains to be D.I.P. Class 52 unless otherwise noted.
 - Tops of all water mains to have a minimum of 3'-1/2' cover unless otherwise noted.
 - Valves adjacent to tees shall be strapped to tees.
 - All fittings shall be buttressed or anchored with concrete in accordance with the Standard Details unless otherwise provided for on the drawings.
 - Fire hydrants shall be set to the bury line elevations shown on the drawings. All fire hydrants shall be restrained and buttressed with concrete in accordance with the Standard Details. Soil around the fire hydrant shall be compacted in accordance with Section 1000 and 1005 of the Standard Specifications.
 - The contractor shall not operate any water main valves on the existing water system.
 - All water house connections shall be for inside meter setting unless otherwise noted on plans or in specifications.
 - For sprinkler system for all townhomes or multi-family dwelling units should have a minimum of 1" connection with a 3/4" meter.
- Part III - Sewer
- All Sewer Mains shall be D.I.P. or P.V.C. unless otherwise noted.
 - All manholes shall be 4'-0" inside diameter unless otherwise noted.
 - Force mains shall be D.I.P. only.
 - Manholes shown with the 12" and 16" walls are for brick manholes only.
 - Manholes designated W.T. in plan and profile shall have watertight frame and cover, standard detail G5.52. Where watertight manhole frames and covers are used, set top of frame 1'-0" above finished grade unless otherwise noted on the drawings.
 - House (s) with the symbol "C.N.S." indicates the cellar cannot be served.

Sediment Control Measures will be implemented in accordance with Section 219 of the Specifications & with the SITE DEVELOPMENT PLAN SDP-01-26 ; drawings 6 thru 8 for Sediment & Erosion Control.

REVIEWED FOR HOWARD SOIL CONSERVATION DISTRICT AND MEETS TECHNICAL REQUIREMENT.
Frank Roberts 9/12/00
SIGNATURE DATE

U.S.D.A. NATURAL RESOURCES CONSERVATION SERVICE

THIS DEVELOPMENT PLAN IS APPROVED FOR SOIL EROSION AND SEDIMENT CONTROL BY THE HOWARD SOIL CONSERVATION DISTRICT.

APPROVED: *Cheryl Simmons* 9/12/00
DATE

DEPARTMENT OF PUBLIC WORKS
HOWARD COUNTY, MARYLAND
Cheryl Simmons 9-12-00
DATE

DEPARTMENT OF PLANNING AND ZONING
HOWARD COUNTY, MARYLAND
Cheryl Simmons 9/12/00
DATE

GLW GUTSCHICK LITTLE & WEBER, P.A.
CIVIL ENGINEERS, LAND SURVEYORS, LAND PLANNERS, LANDSCAPE ARCHITECTS
3909 NATIONAL DRIVE - SUITE 250 - BURTONSVILLE OFFICE PARK
BURTONSVILLE, MARYLAND 20866
TEL: 301-421-4024 BAL: 410-880-1820 DC/VA: 301-989-2524 FAX: 301-421-4186



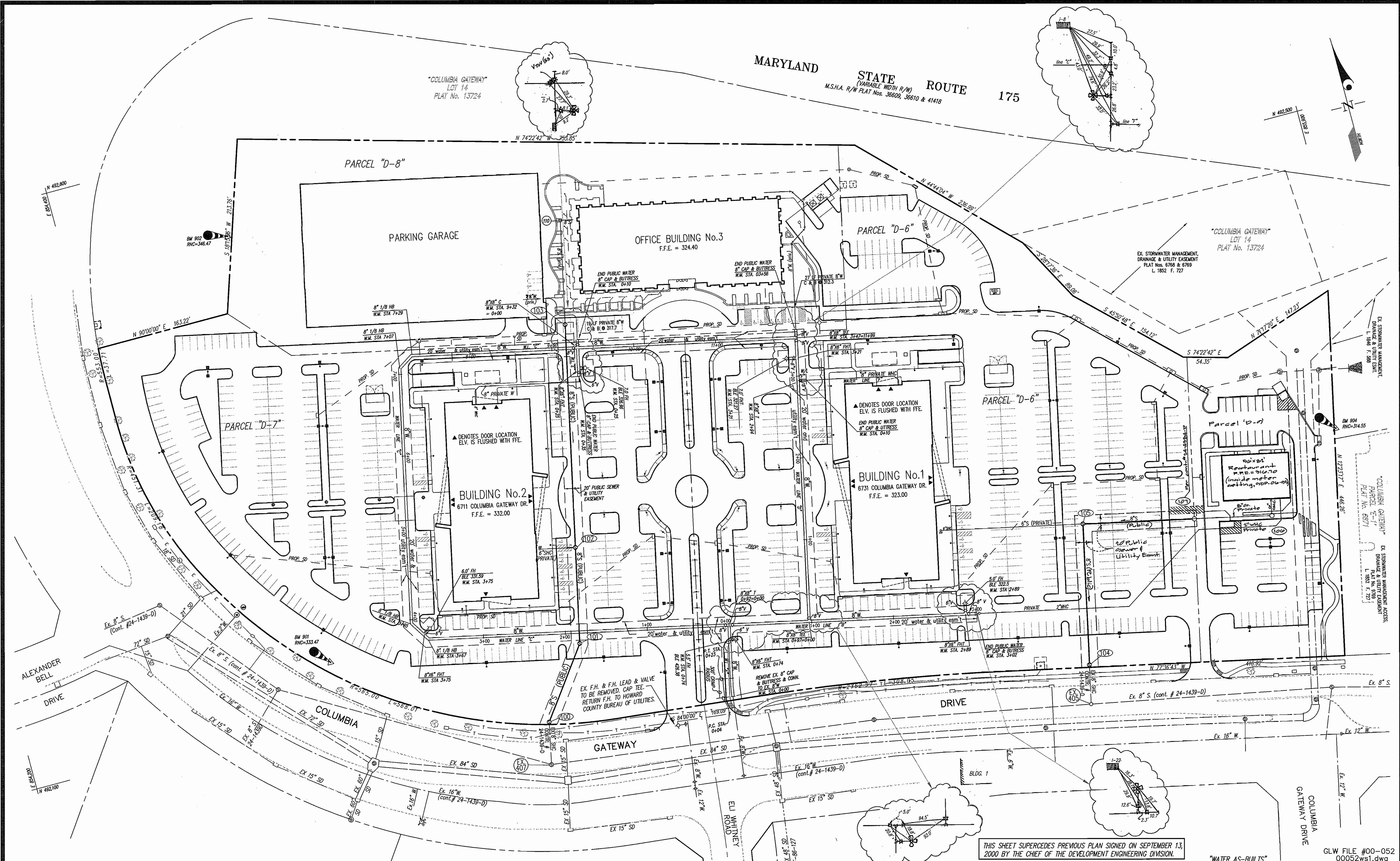
DES:			
DRN:			
CHK:			
DATE: 9/11/00	BY: K.E.I.	NO: 1	REVISION: Add Bldg. 2 & Cor. add new p. 1 A/10/00 AS-BUILT CONDITIONS ADDED TO PLAN 8/18/01

Water & Sewer
EXTENSION PLAN
AND PROFILES
600' SCALE MAP NO. 51/43 19/1

COLUMBIA GATEWAY, PARCELS D6-D9
HOWARD COUNTY, MARYLAND
ELECTION DISTRICT No. 6
CONTRACT No. 24-3907-D

GLW FILE #00-052
00052wsc.dwg

SCALE AS SHOWN
SHEET 1 OF 4



DEPARTMENT OF PUBLIC WORKS
 HOWARD COUNTY, MARYLAND

Ruth Beaman 5-16-06
 CHIEF, BUREAU OF UTILITIES DATE

DEPARTMENT OF PLANNING AND ZONING
 HOWARD COUNTY, MARYLAND

John J. ... 5/22/06
 CHIEF, DEVELOPMENT ENGINEERING DIVISION DATE

GLW GUTSCHICK LITTLE & WEBER, P.A.
 CIVIL ENGINEERS, LAND SURVEYORS, LAND PLANNERS, LANDSCAPE ARCHITECTS
 3909 NATIONAL DRIVE - SUITE 250 - BURTOWNSVILLE OFFICE PARK
 BURTOWNSVILLE, MARYLAND 20886
 TEL: 301-421-4024 BAL: 410-980-1820 DC/VA: 301-999-2524 FAX: 301-421-4186



DES: BSL			
DRN: ROS			
CHK: CKG			
DATE: 9/11/00			
BY: NO			
REVISION			

WATER & SEWER EXTENSION PLAN

600' SCALE MAP NO. 37/43 BLOCK NO. 19/1

COLUMBIA GATEWAY, PARCELS D6 - D9
 HOWARD COUNTY, MARYLAND
 ELECTION DISTRICT No.6

CONTRACT No. 24-3907-D

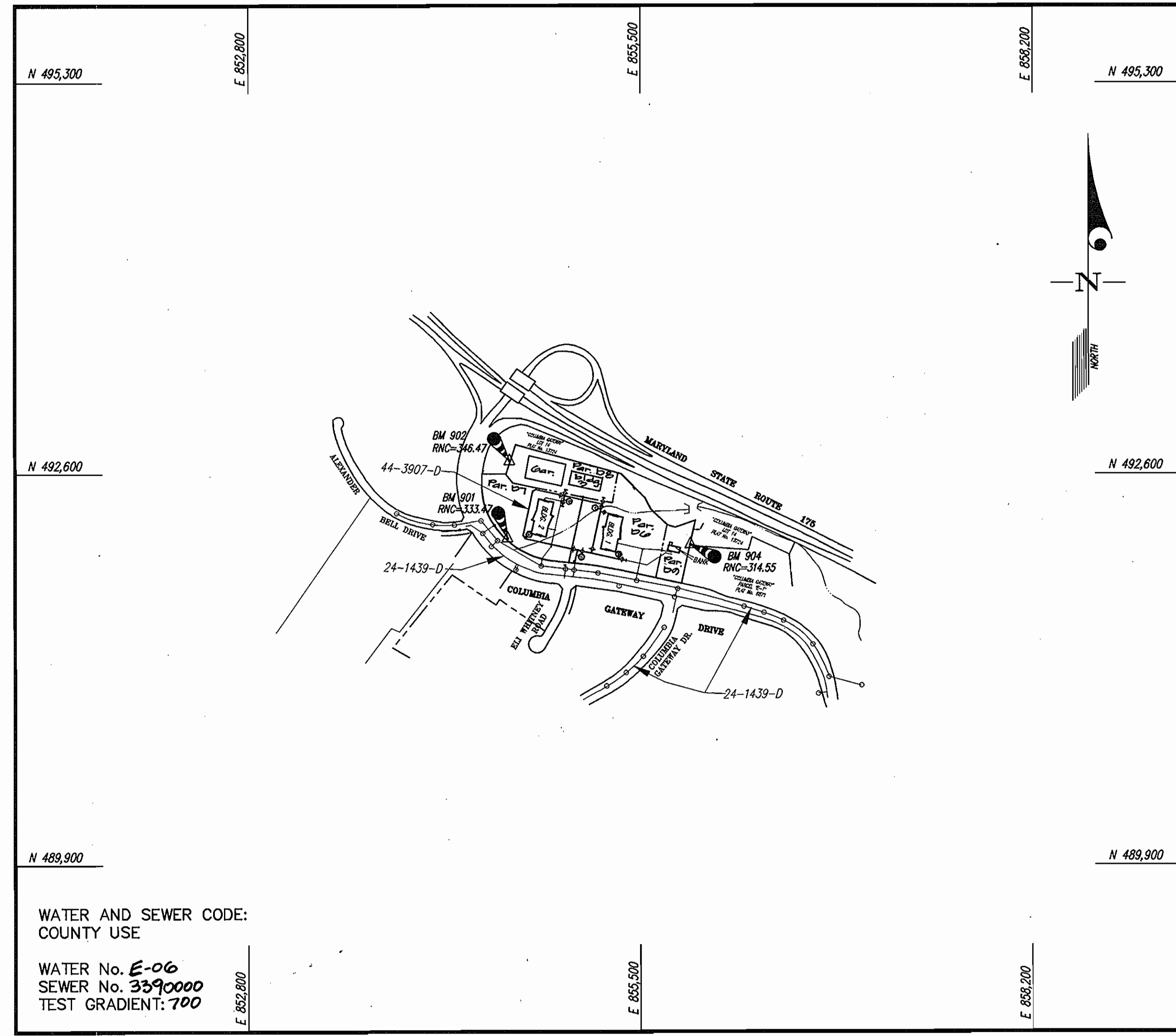
SCALE
 1"=50'

SHEET
 2 OF 4

QUANTITIES				
ITEMS	QUANTITIES ESTIMATED	AS-BUILT		
		QUANTITIES	TYPE	MANUFACTURER/SUPPLIER
8" WATER	2004 L.F.	2134 L.F.	D.I.P. CLASS 52	GRIFPAH PIPE SUPPLY
8" VALVE	9 EA.	10 EA.	REINFORCED DUCTILE IRON	HUGHES SUPPLY
8"-1/8" HB	4 EA.	4 EA. PUBLIC	D.I.P. M.S.	TULOK HUGHES SUPPLY
6" WATER	51 L.F.	58 L.F.	D.I.P. CLASS 52	GRIFPAH PIPE SUPPLY
6" VALVE	5 EA.	5 EA.	REINFORCED DUCTILE IRON	HUGHES SUPPLY
8"X6" FHT	5 EA.	5 EA.	D.I.P. - M.J.	TULOK HUGHES SUPPLY
FIRE HYDRANT	5 EA.	5 EA.	5EA	REINFORCED DUCTILE IRON
8" CAP & BUTTRESS	5 EA.	4 EA.	D.I.P. - M.J.	TULOK HUGHES SUPPLY
8"X8" CROSS	1 EA.	1 EA.	D.I.P. - M.J.	TULOK HUGHES SUPPLY
8"X8" TEE	3 EA.	4 EA.	D.I.P. - M.J.	TULOK HUGHES SUPPLY
8" Sewer Main (PVC)	4800 L.F.			
8" DIP	707 L.F.			
4" Sewer Manhole	6 EA.			
Type 'A' Drop Conn.	1 EA.			
6" Sewer House Conn.	8 L.F.			
Type 'B' Drop Conn.	2 EA.			
NAME OF UTILITY CONTRACTOR: C.J. MILLER				
SURVEY AND DRAFTING DIV.		CHECKBOX: AS-BUILT DATE: _____		

TYPE OF BUILDING	GENERAL OFFICES & restaurant
NUMBER OF UNITS	4 (BUILDINGS)
NUMBER OF S.H.C.'s	4
NUMBER OF W.H.C.'s	4
DRAINAGE AREA	Little Patuxent
TREATMENT PLANT	Little Patuxent Water Quality Mgmt Ctr.

Via Dorsey Pumping Station



VICINITY MAP
SCALE: 1"=600'

WATER AND SEWER CODE:
COUNTY USE
WATER No. E-06
SEWER No. 3390000
TEST GRADIENT: 700

CONTRACT No. 24-3907-D
COLUMBIA GATEWAY
PARCELS 'D6' thru 'D9'
HOWARD COUNTY, MARYLAND
DEPARTMENT OF PUBLIC WORKS

GENERAL NOTES

- PART I
- Approximate location of existing mains are shown. The contractor shall take all necessary precautions to protect existing mains and services and maintain uninterrupted supply. Any damage incurred shall be repaired immediately to the satisfaction of the Engineer at the Contractor's expense.
 - All horizontal controls are based on Maryland State Coordinates [North American Datum 1983 (NAD '83)].
 - All vertical controls are based on U.S.G.S. data.
 - All pipe elevations shown are invert elevations.
 - Clear all utilities by a minimum of 6". Clear all poles by 2'-0" minimum or tunnel as required. The owner has contacted the utility companies and has made arrangements for bracing of poles as shown on the drawings. In the event the contractor's work requires the bracing of additional poles or damages shall be deducted from money owed the contractor. The contractor shall coordinate with the utility companies to schedule the bracing of the poles.
 - For details not shown on the drawings, and for materials and construction methods use Howard County Design Manual, Volume IV, Standard Specifications and Detail for Construction (Latest Edition). The contractor shall have a copy of Volume IV on the job.
 - Where test pits have been made on existing utilities, they are noted by the symbol \oplus at the location of the test pit. A note or notes containing the results of the test pit or pits is included on the drawings. Existing utilities in the vicinity of the proposed work for which test pits have not been dug shall be located by the contractor two weeks in advance of construction operations at his own expense.
 - Contractor shall notify the following utility companies or agencies at least (5) working days before starting work shown on these plans:

State Highway Administration	531-5533
BOE Contractor Services	850-4620
BOE Under Ground Damage Control	787-9068
Miss Utility	1-800-257-7777
Colonial Pipeline Co.	795-1390
Howard County Department of Public Works Bureau of Utilities	313-4900
 - Trees and shrubs are to be protected from damage to maximum extent. Trees and shrubs located within the construction strip are not to be removed or damaged by the contractor.
 - Contractor shall remove trees, stumps and roots along line of excavation. Payment for such removal shall be included in the unit price bid for construction of the main.
 - The contractor shall notify the Bureau of Highways, Howard County, at (410) 313-2450 at least five (5) working days before any open cut of any County road or boring/jacking operation on County roads for laying water/sewer mains or house connections. The approval of these drawings will constitute compliance with DPW requirement per Section 18.114(a) of the Howard County Code.
- PART II - WATER
- All water mains to be D.I.P. Class 52 unless otherwise noted.
 - Tops of all water mains to have a minimum of 3'-1/2' cover unless otherwise noted.
 - Valves adjacent to tees shall be strapped to tees.
 - All fittings shall be buttressed or anchored with concrete in accordance with the Standard Details unless otherwise provided for on the drawings.
 - Fire hydrants shall be set to the bury line elevations shown on the drawings. All fire hydrants shall be restrained and buttressed with concrete in accordance with the Standard Details. Soil around the fire hydrant shall be compacted in accordance with Section 1000 and 1005 of the Standard Specifications.
 - The contractor shall not operate any water main valves on the existing water system.
 - All water house connections shall be for inside meter setting unless otherwise noted on plans or in specifications.
 - For sprinkler system for all townhomes or multi-family dwelling units should have a minimum of 1' connection with a 3/4" meter.
- Part III - Sewer
- All Sewer Mains shall be D.I.P. or P.V.C. unless Otherwise Noted.
 - All manholes shall be 4'-0" inside diameter unless Otherwise Noted.
 - Force mains shall be D.I.P. only.
 - Manholes shown with the 12" and 16" walls are for Brick manholes only.
 - Manholes designated W.T. in plan and profile shall have watertight frame and cover, standard detail 55.52. Where watertight manhole frames and covers are used, set top of frame 1'-0" above finished grade unless otherwise noted on the drawings.
 - House (s) with the symbol "C.N.S." indicates the cellar cannot be served.

Sediment Control Measures will be implemented in accordance with Section 219 of the Specifications & with the SITE DEVELOPMENT PLAN SDP-01-26 ; drawings 6 thru 8 for Sediment & Erosion Control.

REVIEWED FOR HOWARD SOIL CONSERVATION DISTRICT AND MEETS TECHNICAL REQUIREMENT.
John Roberts 9/12/00
SIGNATURE DATE
U.S.D.A. NATURAL RESOURCES CONSERVATION SERVICE
THIS DEVELOPMENT PLAN IS APPROVED FOR SOIL EROSION AND SEDIMENT CONTROL BY THE HOWARD SOIL CONSERVATION DISTRICT.
APPROVED: *Cheryl Simmons* 9/12/00
HOWARD COUNTY DATE

DEPARTMENT OF PUBLIC WORKS
HOWARD COUNTY, MARYLAND
Robert Beaman 9-12-00
CHIEF, BUREAU OF UTILITIES DATE

DEPARTMENT OF PLANNING AND ZONING
HOWARD COUNTY, MARYLAND
Cheryl Simmons 9/12/00
CHIEF, DEVELOPMENT ENGINEERING DIVISION DATE

GLW GUTSCHICK LITTLE & WEBER, P.A.
CIVIL ENGINEERS, LAND SURVEYORS, LAND PLANNERS, LANDSCAPE ARCHITECTS
3909 NATIONAL DRIVE - SUITE 250 - BURTNSVILLE OFFICE PARK
BURTNSVILLE, MARYLAND 20686
TEL: 301-421-4024 BAL: 410-880-1820 DC/VA: 301-989-2524 FAX: 301-421-4186

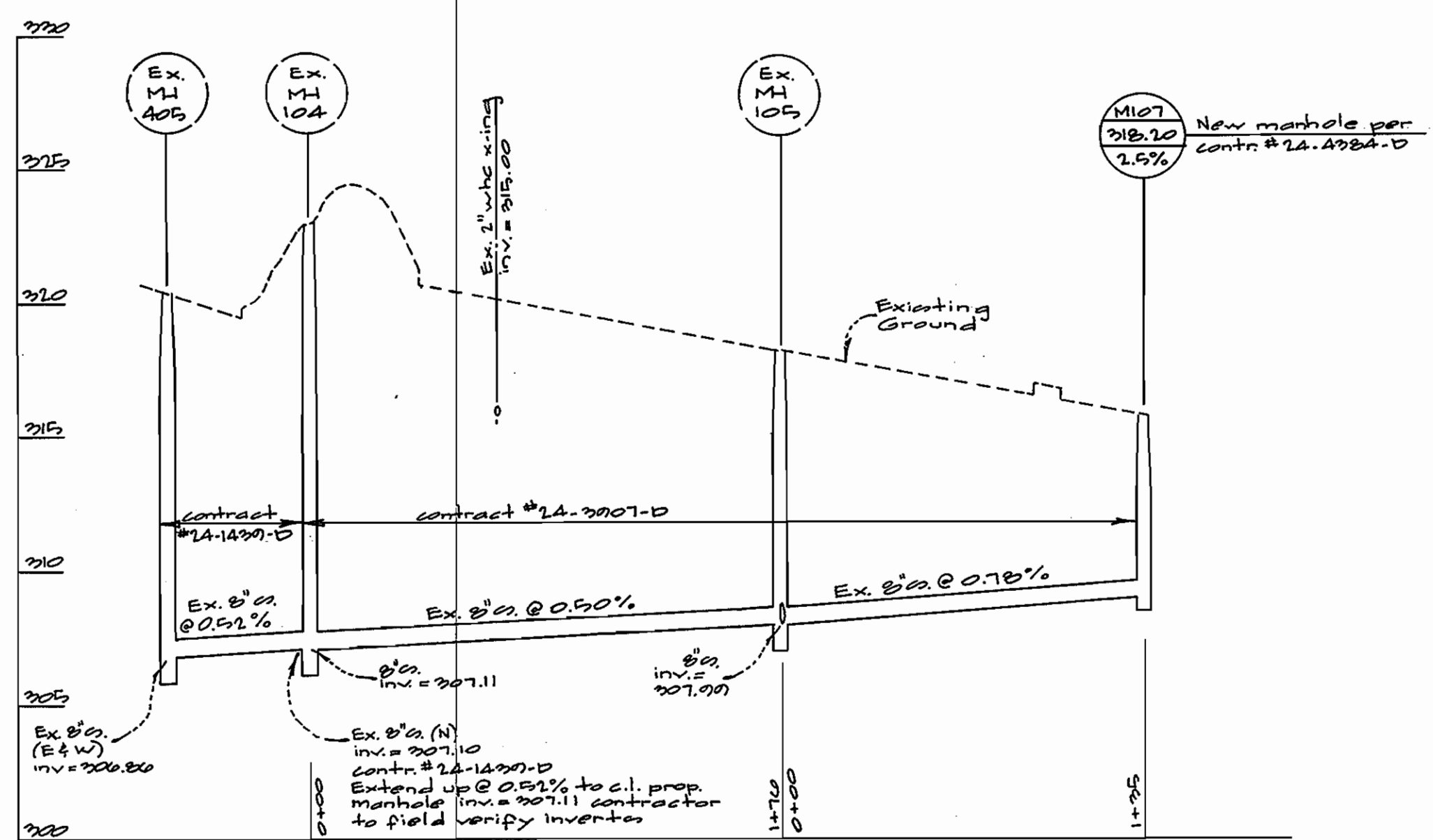
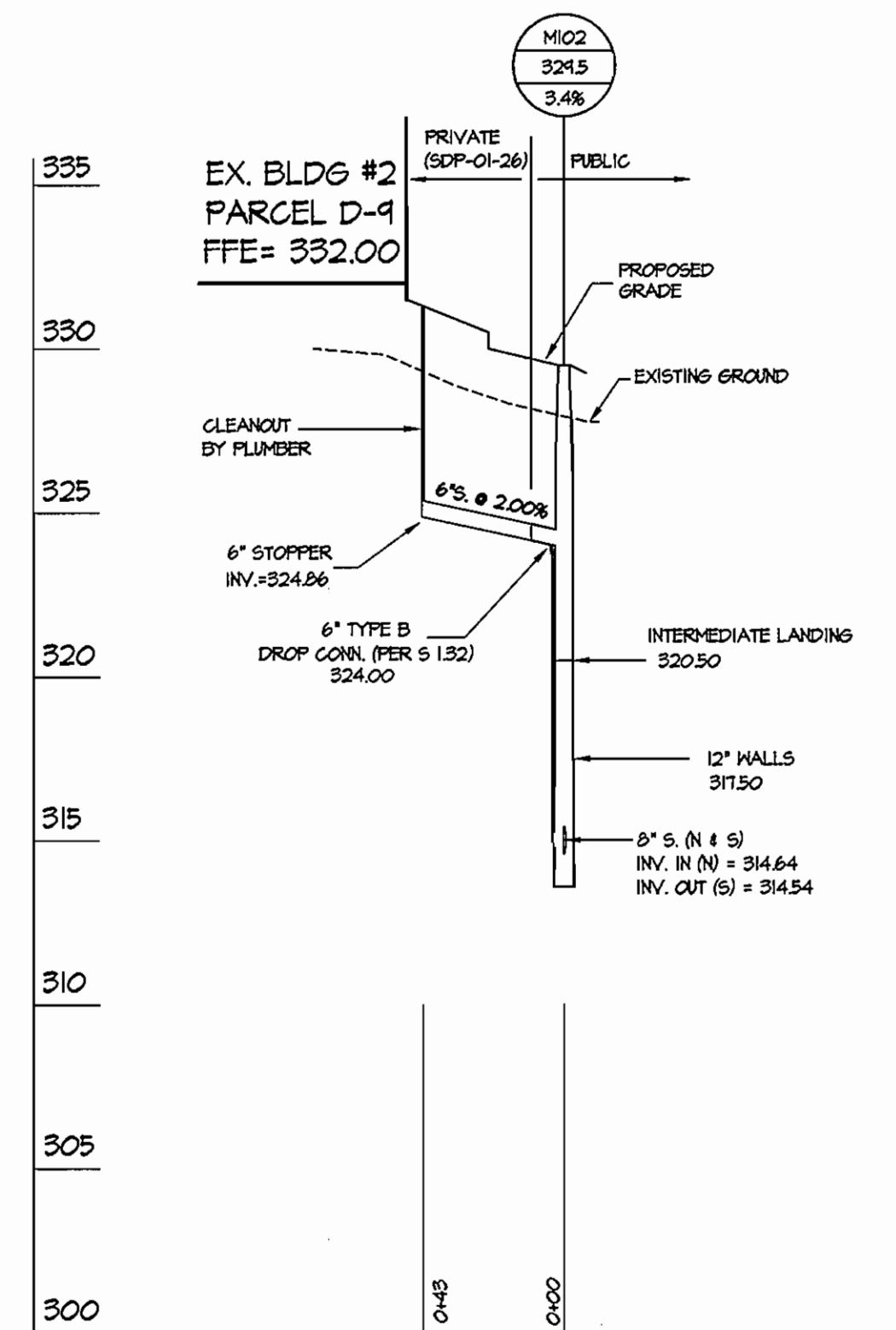
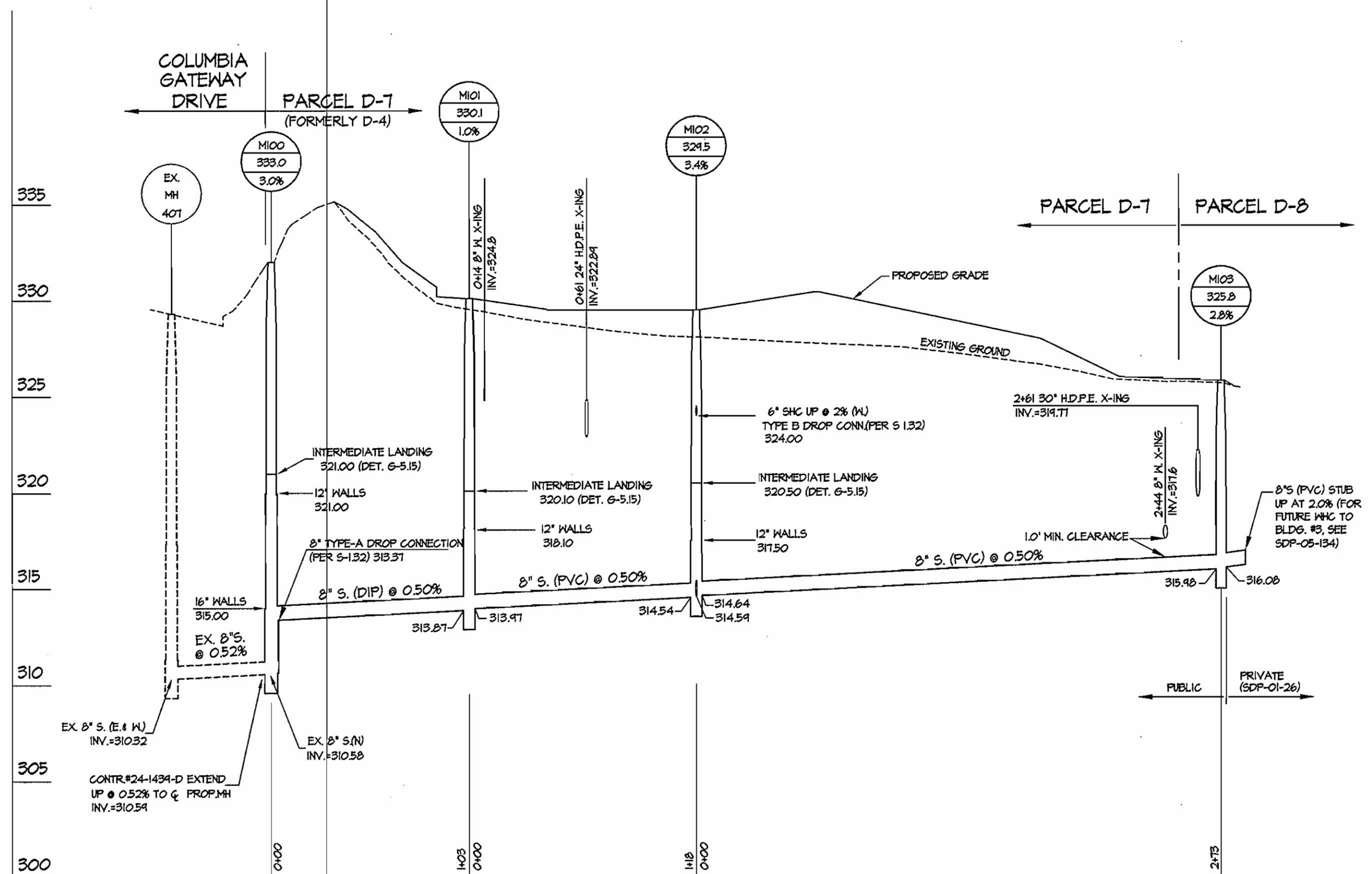


DES:	
DRN:	
CHK:	
DATE:	9/11/00
BY:	K.G.I.
NO:	1
REVISION:	Update Quant & Bldg. info sheets 3/12/01 Add Bldg. 2 & Gar. add new w.l. 4/10/00 AS-BUILT CONDITIONS ADDED TO PLAN 8/8/01
DATE:	9/11/00

Water & Sewer
EXTENSION PLAN
AND PROFILES
600' SCALE MAP NO. 57/42 19/1

GLW FILE #00-052
00052wsc.dwg
"WATER AS-BUILTS"
COLUMBIA GATEWAY, PARCELS D6-D9
HOWARD COUNTY, MARYLAND
ELECTION DISTRICT No.6
CONTRACT No. 24-3907-D

SCALE AS SHOWN
SHEET 1 OF 4



GLW FILE #04112
04112-PROFILES.dwg

DEPARTMENT OF
PUBLIC WORKS
HOWARD COUNTY, MARYLAND
R. J. ...
CHIEF, BUREAU OF UTILITIES

DEPARTMENT OF
PLANNING AND ZONING
HOWARD COUNTY, MARYLAND
...
CHIEF, DEVELOPMENT ENGINEERING DIVISION

GLWGUTSCHICK LITTLE & WEBER, P.A.
CIVIL ENGINEERS, LAND SURVEYORS, LAND PLANNERS, LANDSCAPE ARCHITECTS
3909 NATIONAL DRIVE - SUITE 250 - BURTONSVILLE OFFICE PARK
BURTONSVILLE, MARYLAND 20866
TEL: 301-421-4024 BALT: 410-880-1820 DC/VA: 301-989-2524 FAX: 301-421-4186

DES: MBT				
DRN: KLP				
CHK: MBT				
DATE: 2006				
BY	NO	REVISION	DATE	
		added profiles 6104-0107	01/12/07	

SEWER EXTENSION
PROFILES
SCALE: 1" = 5' HORIZ.
1" = 50' VERT.
600' SCALE MAP NO. 37143 BLOCK NO. 14/1

**COLUMBIA GATEWAY
PARCEL D-10 - D-9**
HOWARD COUNTY, MARYLAND
SIXTH ELECTION DISTRICT
CONTRACT No. 24-3907-D

SCALE
AS
SHOWN
SHEET
A of A