

QUANTITY TABLE

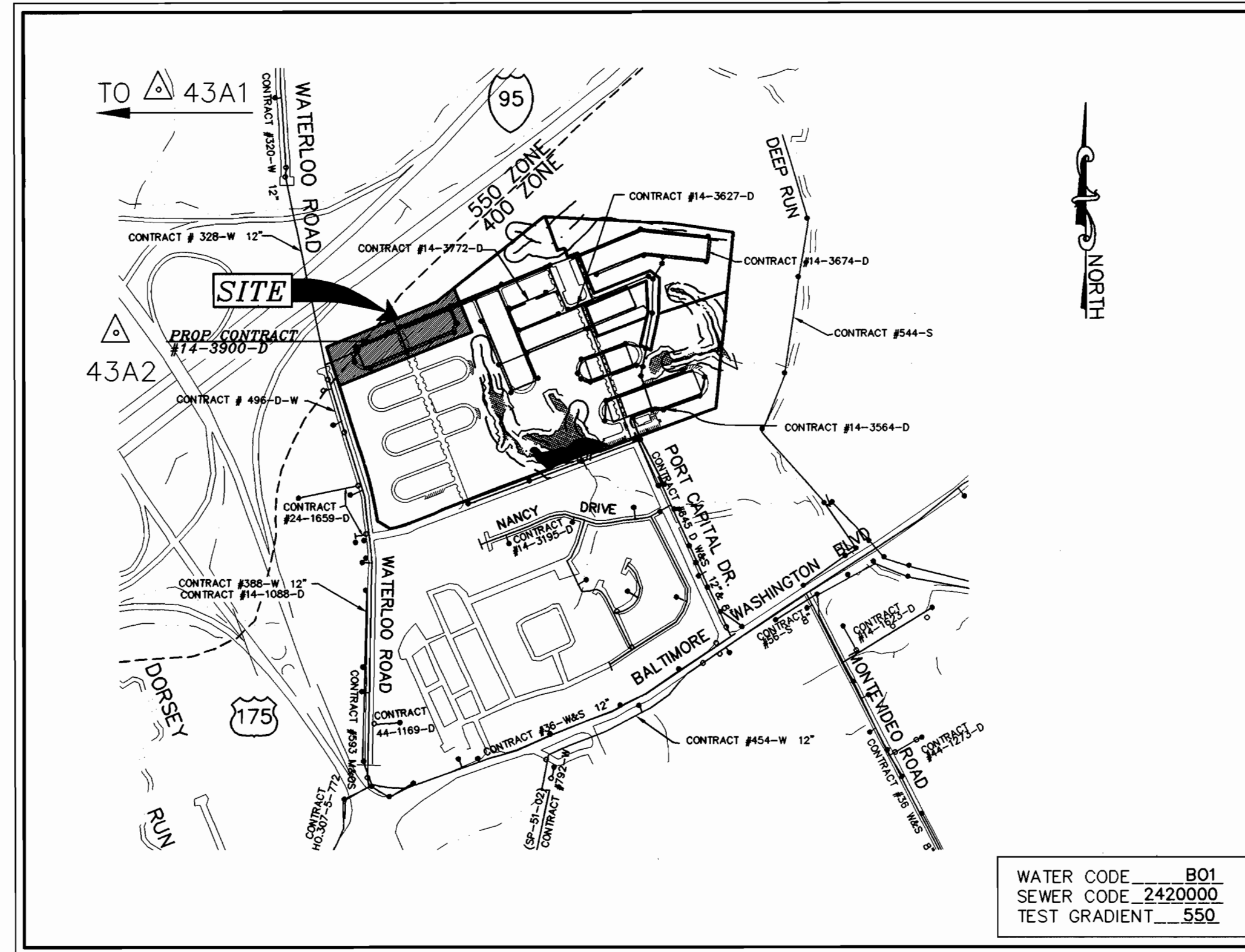
ITEMS	QUANTITIES ESTIMATED	QUANTITIES	TYPE	MANUFACTURER/SUPPLIER
STANDARD MH	10			
8" SEWER MAIN	1390 L.F.			
4" SEWER HOUSE CONNECTION	200 L.F.			
6" SEWER HOUSE CONNECTION	223 L.F.			
8" WATER MAIN	1788 L.F.			
1" WHC	160 L.F.			
1 1/2" WHC	300 L.F.			
F.H.	3			
8"x6" T	3			
8"x8" T	4			
8" V	7			
6" V	3			
8" CAP & BUTTRESS	2			
8" CROSS	1			
12"x8" T.S. & V.	1			
8" 1/8 H.B.	6			
SURVEY AND DRAFTING DIVISION AS-BUILT DATE				
NAME OF UTILITY CONTRACTOR:				

GENERAL NOTES

- APPROXIMATE LOCATION OF EXISTING MAINS ARE SHOWN. THE CONTRACTOR SHALL TAKE ALL NECESSARY PRECAUTIONS TO PROTECT EXISTING MAINS AND SERVICES AND MAINTAIN UNINTERRUPTED SUPPLY. ANY DAMAGE INCURRED SHALL BE REPAIRED IMMEDIATELY TO THE SATISFACTION OF THE ENGINEER AT THE CONTRACTOR'S EXPENSE.
- ALL HORIZONTAL CONTROLS ARE BASED ON MARYLAND STATE COORDINATES. [NORTH AMERICAN DATUM OF 1983 (NAD '83)]
- ALL VERTICAL CONTROLS ARE BASED ON U.S.C.S. DATA.
- ALL PIPE ELEVATIONS SHOWN ARE INVERT ELEVATIONS.
- CLEAR ALL UTILITIES BY A MINIMUM OF 1'. CLEAR ALL POLES BY 2'-0" MINIMUM OR TUNNEL REQUIRED. THE OWNER HAS CONTACTED THE UTILITY COMPANIES AND HAS MADE ARRANGEMENTS FOR BRACING OF POLES AS SHOWN ON THE DRAWINGS. IN THE EVENT THE CONTRACTOR'S WORK REQUIRES THE BRACING OF ADDITIONAL POLES, ANY COST INCURRED BY THE OWNER FOR BRACING OF ADDITIONAL POLES OR DAMAGES SHALL BE DEDUCTED FROM MONEY OWED THE CONTRACTOR. THE CONTRACTOR SHALL COORDINATE WITH THE UTILITY COMPANIES TO SCHEDULE THE BRACING OF THE POLES.
- FOR DETAILS NOT SHOWN ON THE DRAWINGS, AND FOR MATERIALS AND CONSTRUCTION METHODS USE HOWARD COUNTY DESIGN MANUAL, VOLUME IV, STANDARD SPECIFICATIONS AND DETAIL FOR CONSTRUCTION (LATEST EDITION). THE CONTRACTOR SHALL HAVE A COPY OF VOLUME IV ON THE JOB.
- WHERE TEST PITS HAVE BEEN MADE ON EXISTING UTILITIES, THEY ARE NOTED BY THE SYMBOL AT THE LOCATION OF THE TEST PIT. A NOTE OR NOTES CONTAINING THE RESULTS OF THE TEST PIT OR PITS IS INCLUDED ON THE DRAWINGS. EXISTING UTILITIES IN THE VICINITY OF THE PROPOSED WORK FOR WHICH TEST PITS HAVE NOT BEEN DUG SHALL BE LOCATED BY THE CONTRACTOR TWO WEEKS IN ADVANCE OF CONSTRUCTION OPERATIONS AT HIS OWN EXPENSE.
- CONTRACTOR SHALL NOTIFY THE FOLLOWING UTILITY COMPANIES OR AGENCIES AT LEAST FIVE WORKING DAYS BEFORE STARTING WORK SHOWN ON THESE PLANS:

AT & T	(410) 865-3803
BG & E CO. CONTRACTOR SERVICES	(410) 850-4620
BG & E CO. UNDERGROUND DAMAGE CONTROL	(410) 787-9068
HOWARD COUNTY DEPARTMENT OF PUBLIC WORKS	(410) 313-4900
BUREAU OF UTILITIES (DPW)	1-800-257-7777
MISS UTILITY	(410) 795-1390
COLONIAL PIPELINE CO.	(410) 531-5533
STATE HIGHWAY ADMINISTRATION	(410) 531-5533
- TREES AND SHRUBS ARE TO BE PROTECTED FROM DAMAGE TO THE MAXIMUM EXTENT. TREES AND SHRUBS LOCATED WITHIN THE CONSTRUCTION STRIP ARE NOT TO BE REMOVED OR DAMAGED BY THE CONTRACTOR.
- CONTRACTOR SHALL REMOVE TREES, STUMPS AND ROOTS ALONG LINE OF EXCAVATION. PAYMENT FOR SUCH REMOVAL SHALL BE INCLUDED IN THE UNIT PRICE BID FOR CONSTRUCTION OF THE MAIN.
- THE CONTRACTOR SHALL NOTIFY THE BUREAU OF HIGHWAYS, HOWARD COUNTY, AT (410) 313-2450 AT LEAST FIVE (5) WORKING DAYS BEFORE ANY OPEN CUT OF ANY COUNTY ROAD OR BORING/JACKING OPERATION IN COUNTY ROADS FOR LAYING WATER/SEWER MAINS OR HOUSE CONNECTIONS. THE APPROVAL OF THESE DRAWINGS WILL CONSTITUTE COMPLIANCE WITH DPW REQUIREMENTS PER SECTION 18.114 (a) OF THE HOWARD COUNTY CODE.
- ALL WATER MAINS TO BE D.I.P. CLASS 52 UNLESS OTHERWISE NOTED.
- TOPS OF ALL WATER MAINS TO HAVE A MINIMUM OF 3'-1/2" COVER UNLESS OTHERWISE NOTED.
- VALVES ADJACENT TO TEES SHALL BE STRAPPED TO TEES.
- ALL FITTINGS SHALL BE BUTTRESSED OR ANCHORED WITH CONCRETE IN ACCORDANCE WITH THE STANDARD DETAILS UNLESS OTHERWISE PROVIDED FOR ON THE DRAWINGS.
- FIRE HYDRANTS SHALL BE SET TO THE BURY LINE ELEVATIONS SHOWN ON THE DRAWINGS. ALL FIRE HYDRANTS SHALL BE STRAPPED AND BUTTRESSED WITH CONCRETE IN ACCORDANCE WITH STANDARD DETAILS. SOIL AROUND THE FIRE HYDRANT SHALL BE COMPACTED IN ACCORDANCE WITH SECTION 1000 AND 1005 OF THE STANDARD SPECIFICATIONS.
- THE CONTRACTOR SHALL NOT OPERATE ANY WATER MAIN VALVES ON THE EXISTING WATER SYSTEM.
- ALL WATER HOUSE CONNECTIONS SHALL BE FOR INSIDE METER SETTING UNLESS OTHERWISE NOTED ON PLANS OR IN SPECIFICATIONS.
- SPRINKLER SYSTEM FOR ALL TOWNHOMES OR MULTI-FAMILY DWELLING UNITS SHOULD HAVE A MINIMUM OF 1" CONNECTION WITH A 3/4" METER.
- ALL SEWER MAINS SHALL BE P.V.C. OR D.I.P. UNLESS OTHERWISE NOTED.
- THE CONTRACTOR SHALL PROVIDE A JOINT IN ALL SEWER MAINS WITHIN 2'-0" OF EXTERIOR MANHOLE WALL.
- ALL MANHOLES SHALL BE 4'-0" INSIDE DIAMETER UNLESS OTHERWISE NOTED.
- FORCE MAINS SHALL BE D.I.P. ONLY.
- MANHOLES SHOWN WITH 12" AND 16" WALLS ARE FOR BRICK MANHOLES ONLY.
- MANHOLES DESIGNATED W.T. IN PLAN AND PROFILE SHALL HAVE WATERTIGHT FRAME AND COVERS, STANDARD DETAIL 05.52. WHERE WATERTIGHT MANHOLE FRAME AND COVER IS USED, SET TOP OF FRAME 1' - 6" ABOVE FINISHED GRADE UNLESS OTHERWISE NOTED ON THE DRAWINGS.
- HOUSE(S) WITH THE SYMBOL "C.N.S." INDICATES THAT CELLAR CANNOT BE SERVED.
- ALL STATIONING SHOWN IS WATER MAIN STATIONING.
- ALL CLEANOUTS AND BALL VALVES ARE TO BE LOCATED AT THE WATER, SEWER AND UTILITY EASEMENT LINE.
- CONTRACTOR TO VERIFY THE LOCATION OF ALL EXISTING UTILITIES PRIOR TO COMMENCING CONSTRUCTION.
- EXISTING WATER AND SEWER EASEMENT ADJACENT TO PORT CAPITOL DRIVE IS RECORDED UNDER LIBER 727/FOLIO 098.
- SEDIMENT CONTROL APPROVED UNDER SDP-96-20.
- ALL ROADWAYS ARE STD. HOWARD COUNTY P-2 PAVEMENT UNLESS OTHERWISE SHOWN.
- HORIZONTAL AND VERTICAL DATUMS ARE RELATED TO THE MARYLAND STATE PLANE COORDINATE SYSTEM AS PROJECTED FROM HOWARD COUNTY CONTROL STATIONS NO. 43A1 AND 43A2.

STATION 43A2	NORTHING 550784.342654	STATION 43A1	NORTHING 552081.810532
	EASTING 1372040.182420		EASTING 1370625.809590
	ELEVATION 292.55		ELEVATION 306.79
- ALL WHCs & SHCs ARE TWIN UNLESS OTHERWISE NOTED.



VICINITY MAP

SCALE: 1" = 600'

TYPE OF BUILDING	RESIDENTIAL
No. OF UNITS	51
No. OF WATER HOUSE CONNECTIONS	51
No. OF SEWER HOUSE CONNECTIONS	51
DRAINAGE AREA	DEEP RUN, PATAPSCO
TREATMENT PLANT	PATAPSCO WASTEWATER TREATMENT PLANT, BALTIMORE

PLAN REFERENCE NUMBERS

SDP-97-115	SDP-96-20
SDP-97-114	SDP-00-70
SDP-97-03	SDP-97-88

I/WE CERTIFY THAT ALL DEVELOPMENT AND CONSTRUCTION WILL BE DONE ACCORDING TO THIS PLAN, AND THAT ANY RESPONSIBLE PERSONNEL INVOLVED IN THE CONSTRUCTION PROJECT WILL HAVE A CERTIFICATE OF ATTENDANCE AT A DEPARTMENT OF THE ENVIRONMENT APPROVED TRAINING PROGRAM FOR THE CONTROL OF SEDIMENT AND EROSION BEFORE BEGINNING THE PROJECT. I ALSO AUTHORIZE PERIODIC ON-SITE INSPECTION BY THE HOWARD SOIL CONSERVATION DISTRICT.

[Signature] 12/16/00
DEVELOPER'S SIGNATURE DATE

DEVELOPER'S NAME: *[Name]*

I HEREBY CERTIFY THAT THIS PLAN FOR EROSION AND SEDIMENT CONTROL REPRESENTS A PRACTICAL AND WORKABLE PLAN BASED ON MY PERSONAL KNOWLEDGE OF THE SITE CONDITIONS AND THAT IT WAS PREPARED IN ACCORDANCE WITH THE REQUIREMENTS OF THE HOWARD SOIL CONSERVATION DISTRICT.

[Signature] 11/17/00
ENGINEER'S SIGNATURE DATE

ENGINEER'S NAME: *[Name]*

REVIEWED FOR HOWARD SCD AND MEETS TECHNICAL REQUIREMENTS

[Signature] 12/16/00
DATE

USA-NATURAL RESOURCES CONSERVATION SERVICE

THIS DEVELOPMENT PLAN IS APPROVED FOR SOIL (SDP-00-10) EROSION AND SEDIMENT CONTROL BY THE SOIL CONSERVATION DISTRICT

[Signature] 12/16/00
DATE

HOWARD SCD

OWNER/DEVELOPER
RTE 175 LLC
C/O ROCK REALTY, INC.
25 MAIN STREET
REISTERSTOWN, MARYLAND 21136
(410) 526-4030

CONTRACT NO. 14-3900-D NEW COLONY VILLAGE PHASE 5 - UNITS 237-287 WATER AND SEWER MAIN EXTENSIONS HOWARD COUNTY, MARYLAND DEPARTMENT OF PUBLIC WORKS

INDEX OF DRAWINGS

NO.	DESCRIPTION
1	TITLE SHEET
2	WATER AND SEWER PLAN
3	WATER PROFILES
4	SEWER PROFILES

DEPARTMENT OF PUBLIC WORKS
HOWARD COUNTY, MARYLAND
[Signature] 11-27-00
CHIEF, BUREAU OF UTILITIES DATE

DEPARTMENT OF PLANNING & ZONING
HOWARD COUNTY, MARYLAND
[Signature] 12/16/00
CHIEF, DEVELOPMENT ENGINEERING DIVISION DATE

MILDENBERG, BOENDER & ASSOC., INC.
Engineers Planners Surveyors
5972 Dorsey Hall Drive, Suite 202, Ellicott City, Maryland 1042
(410) 597-0286 Fax: (901) 621-5521 Wash. (410) 597-0286 Fax



engineering	MP				
illustration	MP				
approval	RJH				
project	94044				
date	NOV. 2000	BY	NO.	REVISION	DATE

TITLE SHEET
600' SCALE MAP NO. 43 BLOCK NO. 3

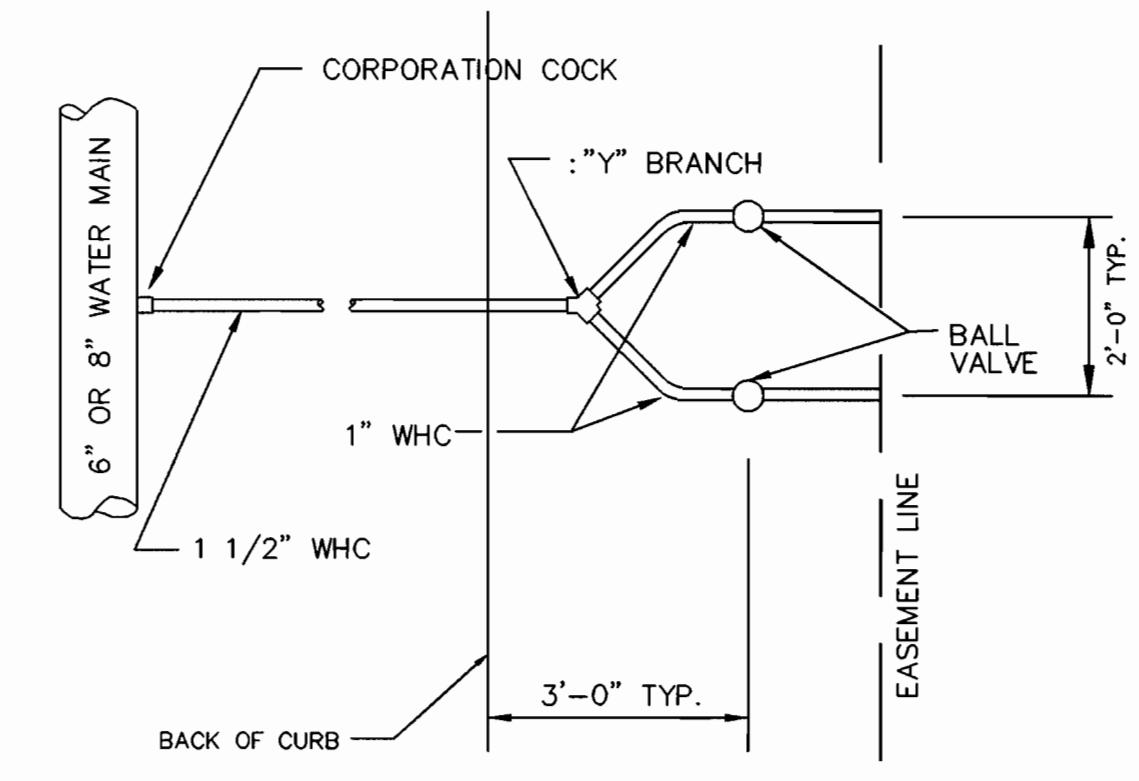
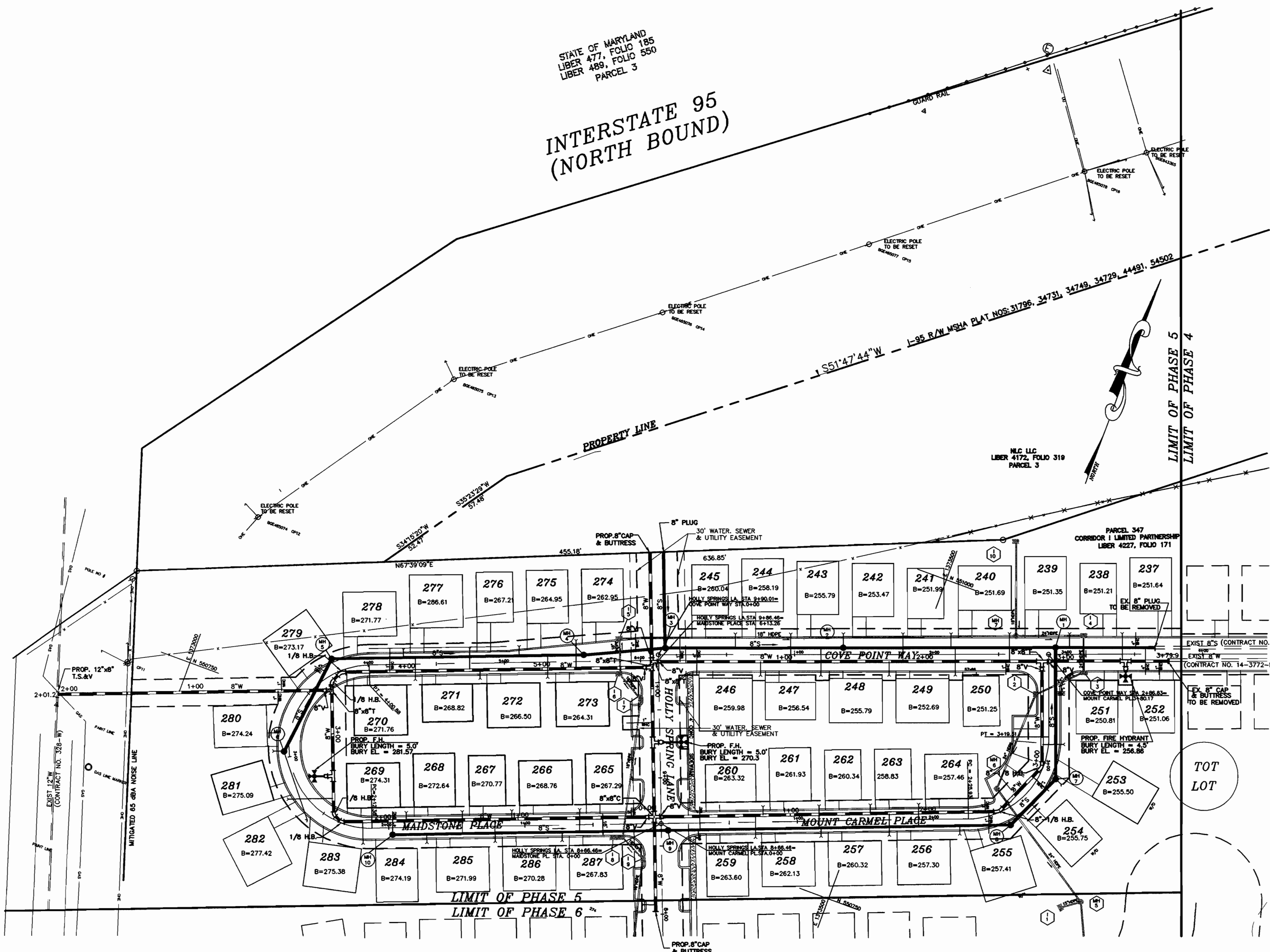
NEW COLONY VILLAGE
PHASE 5 - UNITS 237 TO 287
CONTRACT NO. 14-3900-D
FIRST ELECTION DISTRICT
HOWARD COUNTY, MARYLAND

scale AS SHOWN
1 OF 4

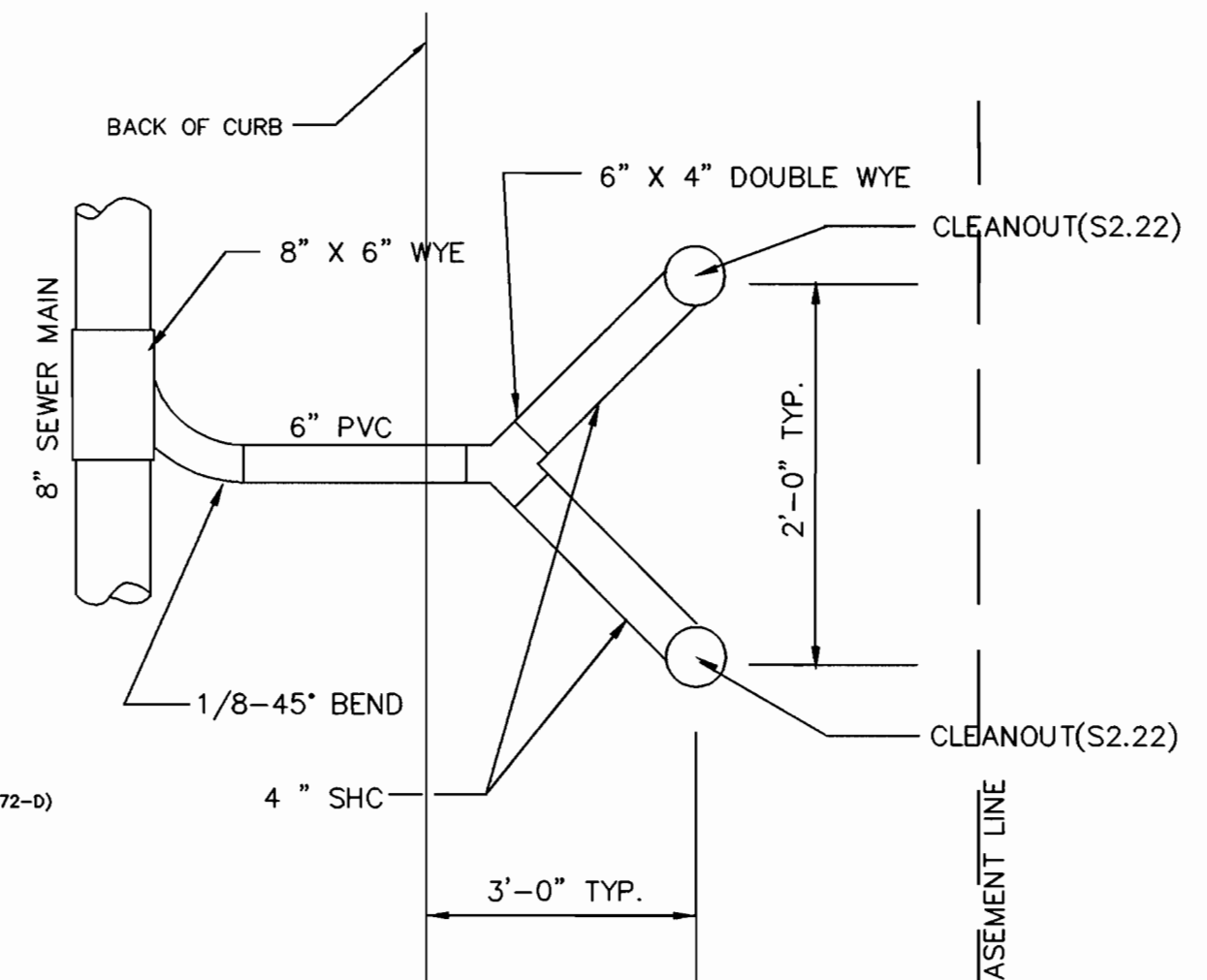
**WATER MAIN
TABULATION CHART**

MANHOLE LOCATION CHART			
MH #	ROAD	CL STATION	OFFSET
1	COVE POINT LANE	2+92	5' LT.
2	COVE POINT LANE	1+36	5' LT.
3	COVE POINT LANE	0+05	5' LT.
4	MAIDSTONE PLACE	5+59	5' LT.
5	MAIDSTONE PLACE	3+77	10.5' LT.
6	MAIDSTONE PLACE	3+04	3.5' LT.
7	MOUNT CARMEL PLACE	2+93	12' RT.
8	MOUNT CARMEL PLACE	2+53	12' RT.
9	MOUNT CARMEL PLACE	0+05	5' RT.
10	MAIDSTONE PLACE	1+97	5' LT.

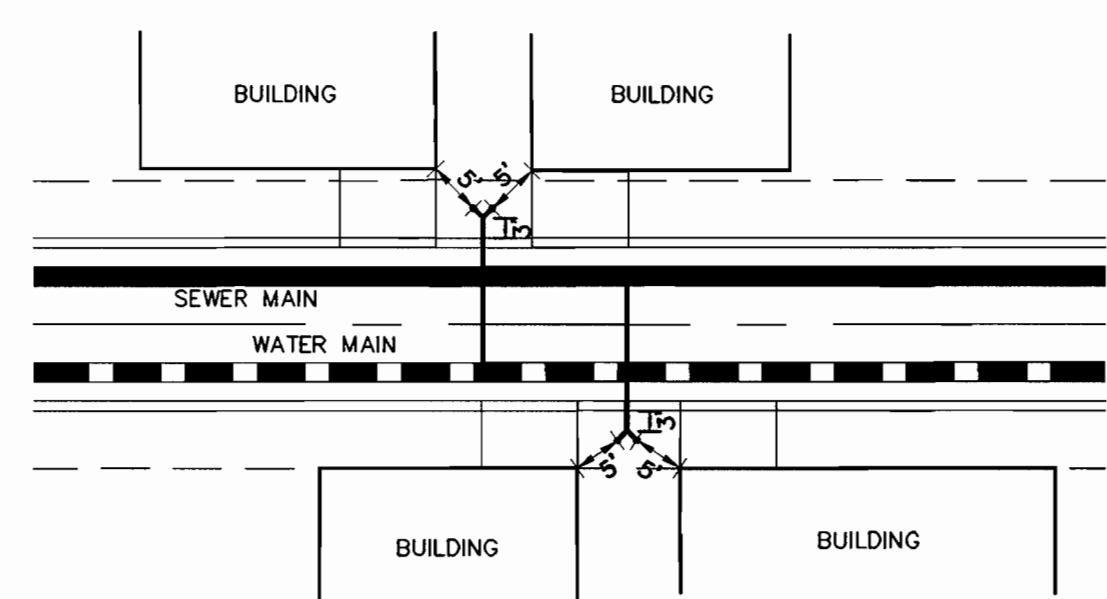
COVE POINT WAY		
WATER STA.	APPURTENANCE	OFFSET FROM ROAD E
0+00	8"x8" T	5' RT.
0+03	8" V	5' RT.
2+86.8	8"x8" T	5' RT.
2+90	8" V	5' RT.
3+50	8"x6" FHT	5' RT.
3+50	6" V	7' RT.
3+50	F.H.	16' RT.
HOLLY SPRING LANE		
WATER STA.	APPURTENANCE	OFFSET FROM ROAD E
0+00	8" C&B	5' RT.
0+80.1	8"x8" T	5' RT.
0+84.3	8"x8" T	5' RT.
1+40	8"x6" F.H.T.	5' RT.
1+40	6" V	3' RT.
1+40	F.H.	16' LT.
1+94.3	8"x8" C	5' RT.
2+63	8" C&B	5' RT.
MAIDSTONE PLACE		
WATER STA.	APPURTENANCE	OFFSET FROM ROAD E
0+00	8"x8" C	5' RT.
0+03	8" V	5' RT.
2+30	8" 1/8 H.B.	0.6' LT.
2+38	8" 1/8 H.B.	3' LT.
2+66	8"x6" FHT	25.5' RT.
2+66	8" V	23.5' RT.
2+66	F.H.	12' RT.
3+29	8"x8" T	6.9' RT.
3+35	8" 1/8 H.B.	1' LT.
3+45	8" 1/8 H.B.	4.5' LT.
5+77.6	8" V	5' RT.
5+80.6	8"x8" T	5' RT.
MOUNT CARMEL PLACE		
WATER STA.	APPURTENANCE	OFFSET FROM ROAD E
0+00	8"x8" C	5' LT.
0+03	8" V	5' LT.
2+53.3	8" 1/8 H.B.	0.6' LT.
2+99	8" 1/8 H.B.	0.8' LT.
3+73.8	8" V	5' LT.
3+76.8	8"x8" T	5' LT.



TYPICAL DETAIL -
TWIN WATER HOUSE CONNECTION (TWHC)



TYPICAL DETAIL -
TWIN SEWER HOUSE CONNECTION (TSHC)



TYPICAL DETAIL -
TWIN WHC & SHC LOCATIONS IN PLAN VIEW
SCALE: 1" = 20'

SEWER HOUSE CONNECTION TABLE				
UNIT #	% SLOPE	INV. @ EASE MIN.	CELLAR ELEV.	TYPE OF CONNECTION
237	2	247.00	250.87	SHC
238 & 239	2	247.25	250.95	TSHC
240 & 241	1	247.69	250.89	TSHC
242 & 243	2	249.11	253.25	MTSHC
244 & 245	2	253.28	257.28	TSHC
246	2	254.21	258.21	SHC
247 & 248	2	251.86	255.56	TSHC
249 & 250	1	247.77	250.97	TSHC
251	1	247.45	250.45	SHC
252	2	247.16	250.86	SHC
253 & 254	2	251.39	255.29	MTSHC
255 & 256	2	252.84	256.84	TSHC
257 & 258	2	255.26	259.36	TSHC
259	2	257.86	261.56	SHC
260	2	257.81	261.69	SHC
261 & 262	2	255.69	259.69	TSHC
263 & 264	2	253.74	257.24	TSHC
265 & 266	2	261.76	265.76	TSHC
267 & 268	2	266.11	270.11	TSHC
269	2	268.76	272.76	SHC
270 & 271	2	264.77	268.77	TSHC
272 & 273	2	259.72	263.02	TSHC
274	2	256.00	259.90	SHC
275 & 276	2	260.77	264.67	TSHC
277 & 278	2	265.02	269.02	TSHC
279	2	268.02	271.02	SHC
280 & 281	2	269.96	274.00	MTSHC
282 & 283	2	271.10	274.80	MTSHC
284 & 285	2	267.16	271.16	TSHC
286 & 287	2	262.16	266.16	TSHC

OWNER/DEVELOPER
RTÉ 175 LLC
C/O ROCK REALTY, INC.
25 MAIN STREET
REISTRETOWN, MARYLAND 21136
(410) 526-4030

DEPARTMENT OF PUBLIC WORKS
HOWARD COUNTY, MARYLAND
11-27-00
DATE

DEPARTMENT OF PLANNING & ZONING
HOWARD COUNTY, MARYLAND
12/13/00
DATE

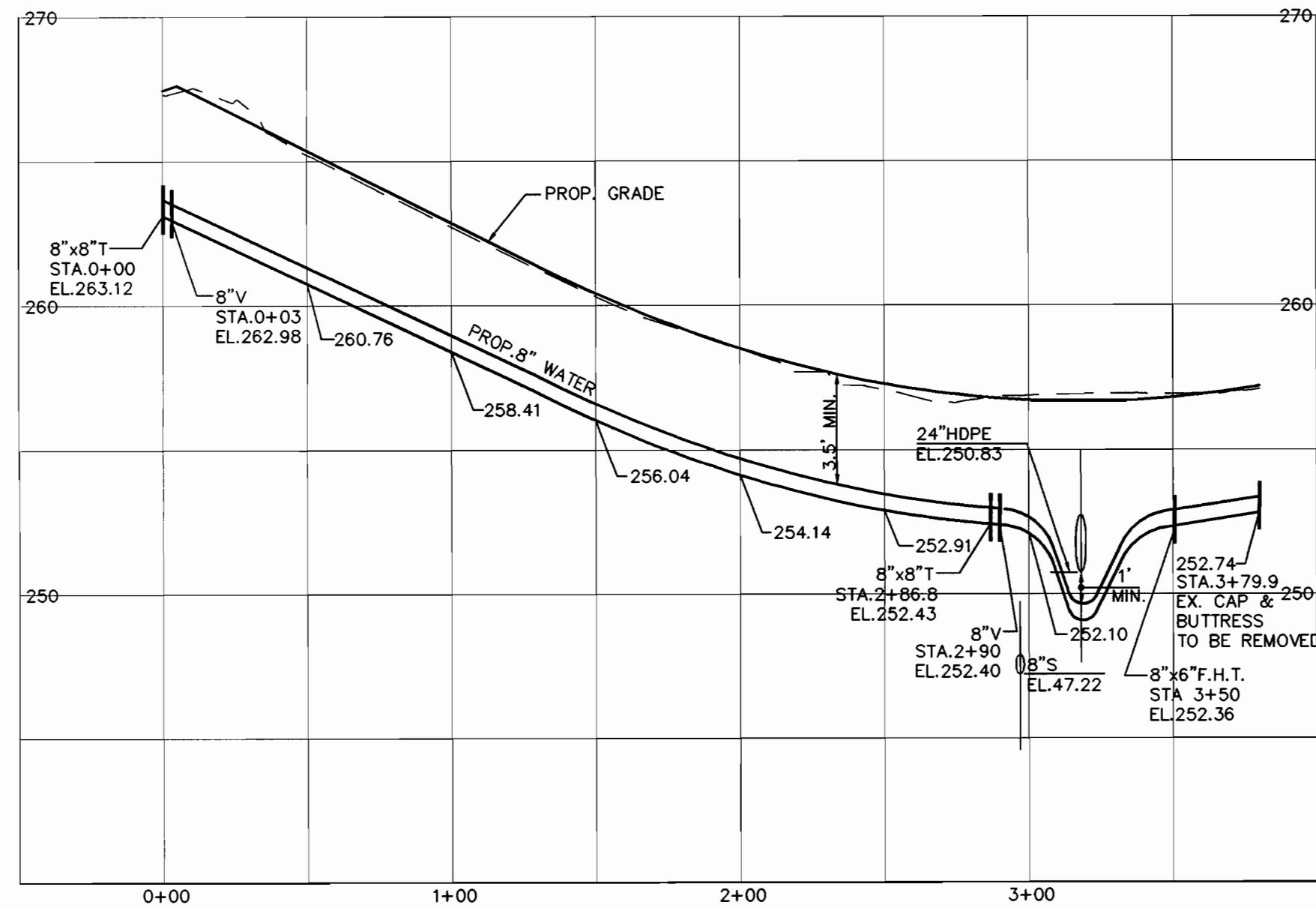
**MILDENBERG,
BOENDER & ASSOC., INC.**
Engineers Planners Surveyors
5972 Dorsey Hall Drive, Suite 202, Ellicott City, Maryland 21042
(410) 997-0286 (fax) (301) 821-5321 Wash. (410) 997-0286 (cell)

engineering	M.P.			
illustration	M.P.			
approval	J.H.			
project				
date	NOV.2000	BY	NO.	REVISION

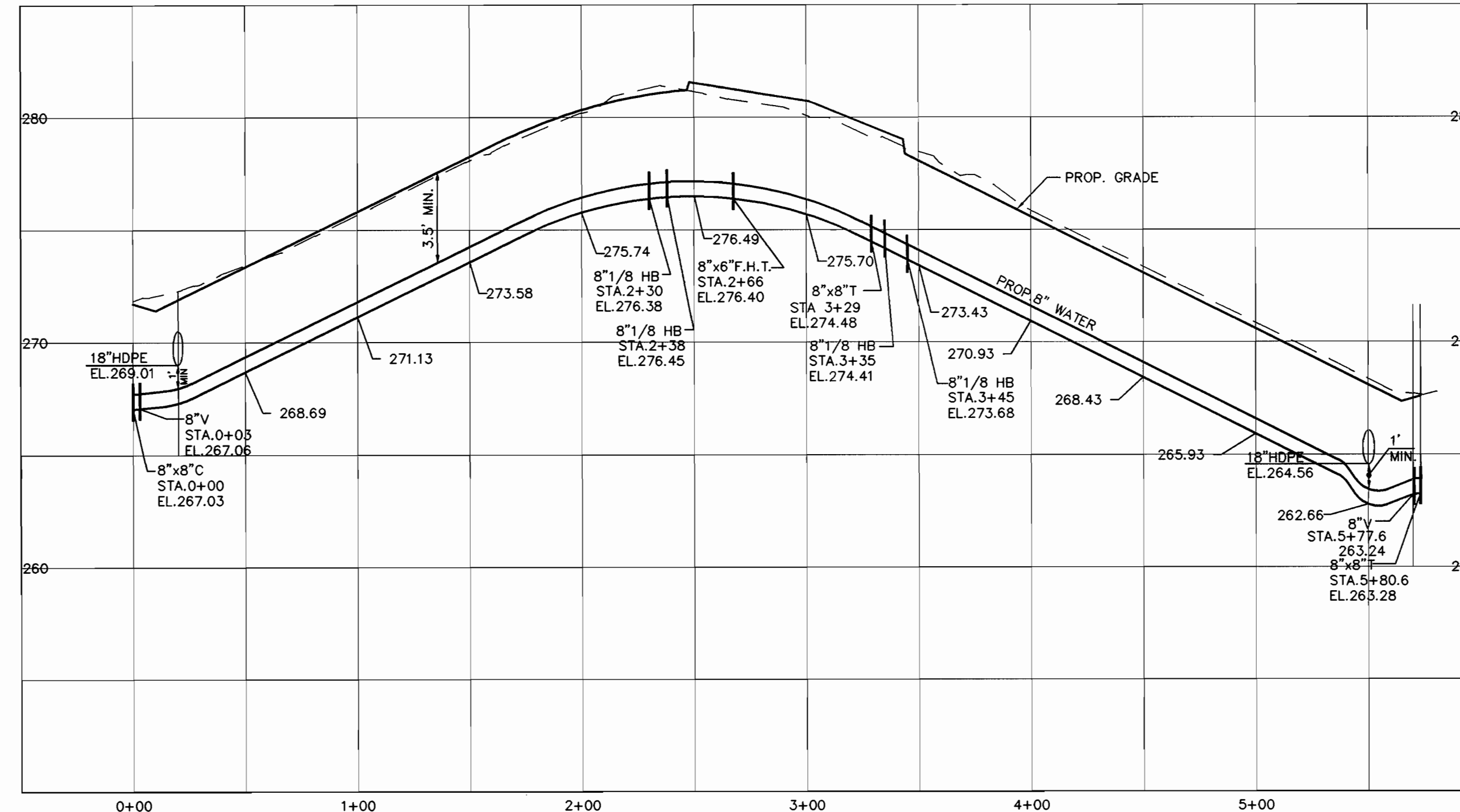
**WATER & SEWER
PLAN**

NEW COLONY VILLAGE
PHASE 5 - UNITS 237 TO 287
CONTRACT NO. 14-3900-D
FIRST ELECTION DISTRICT
HOWARD COUNTY

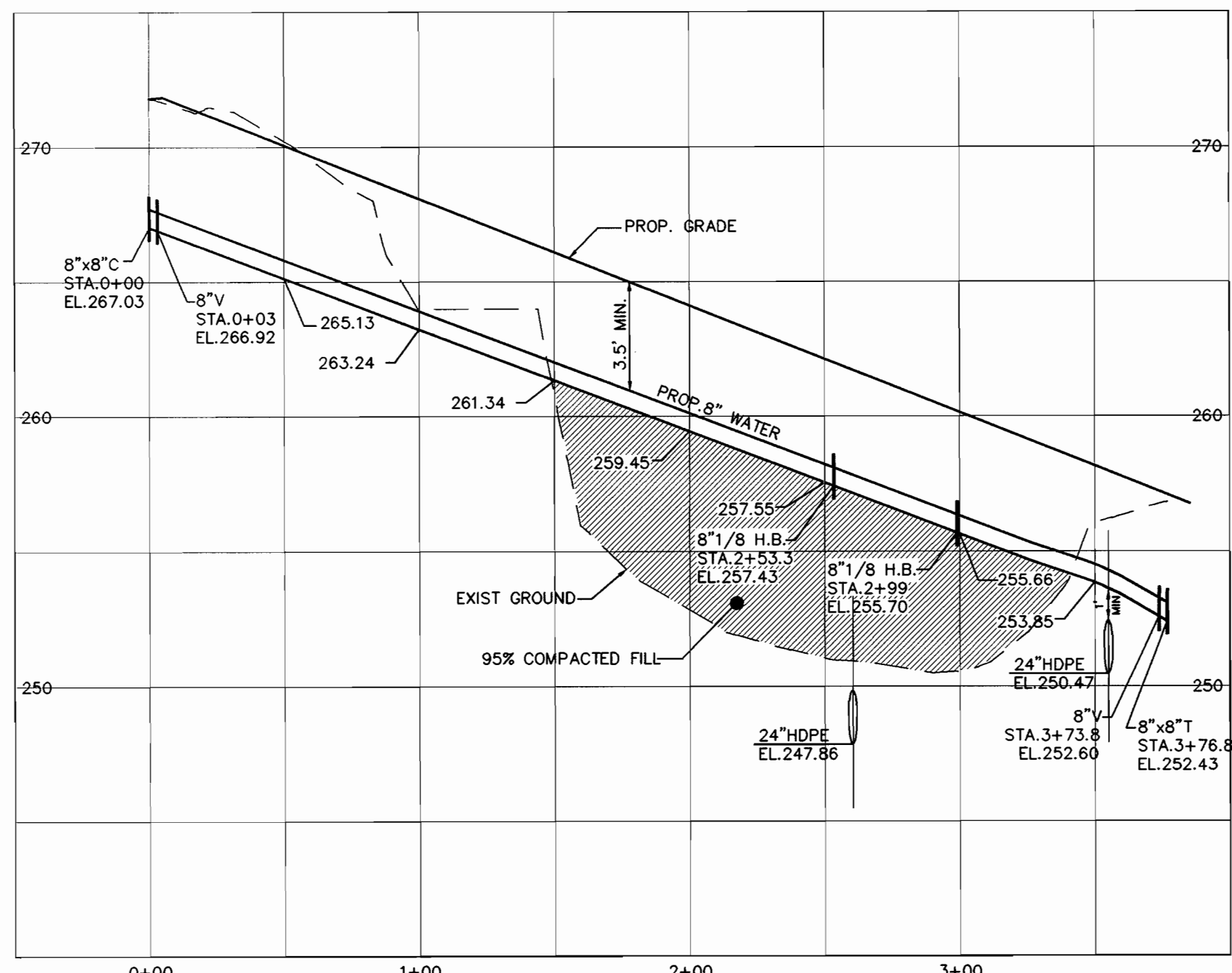
scale
1" = 50'
2 OF 4



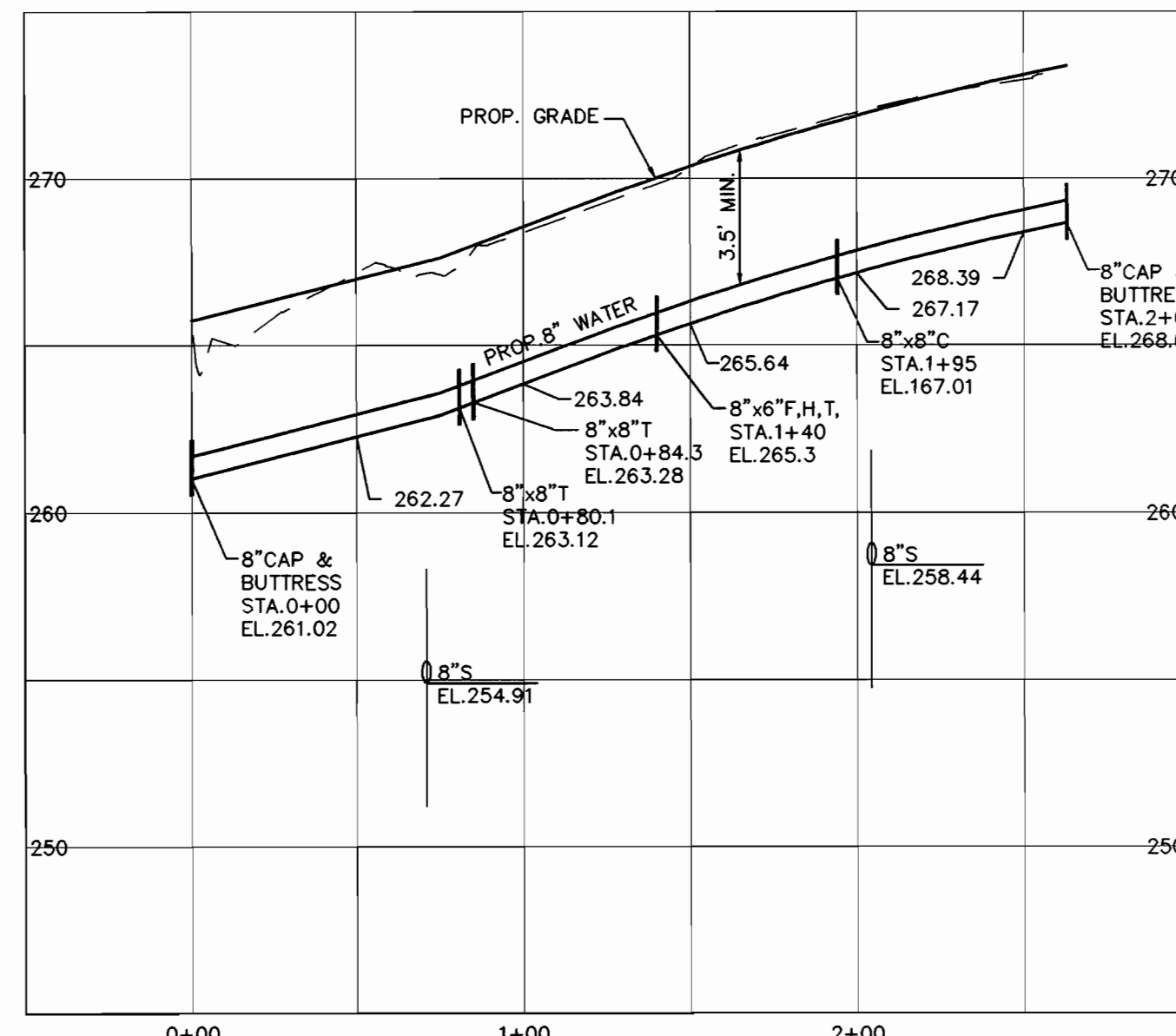
8" WATER PROFILE
COVE POINT LANE
HORIZONTAL SCALE : 1" = 50'
VERTICAL SCALE : 1" = 5'



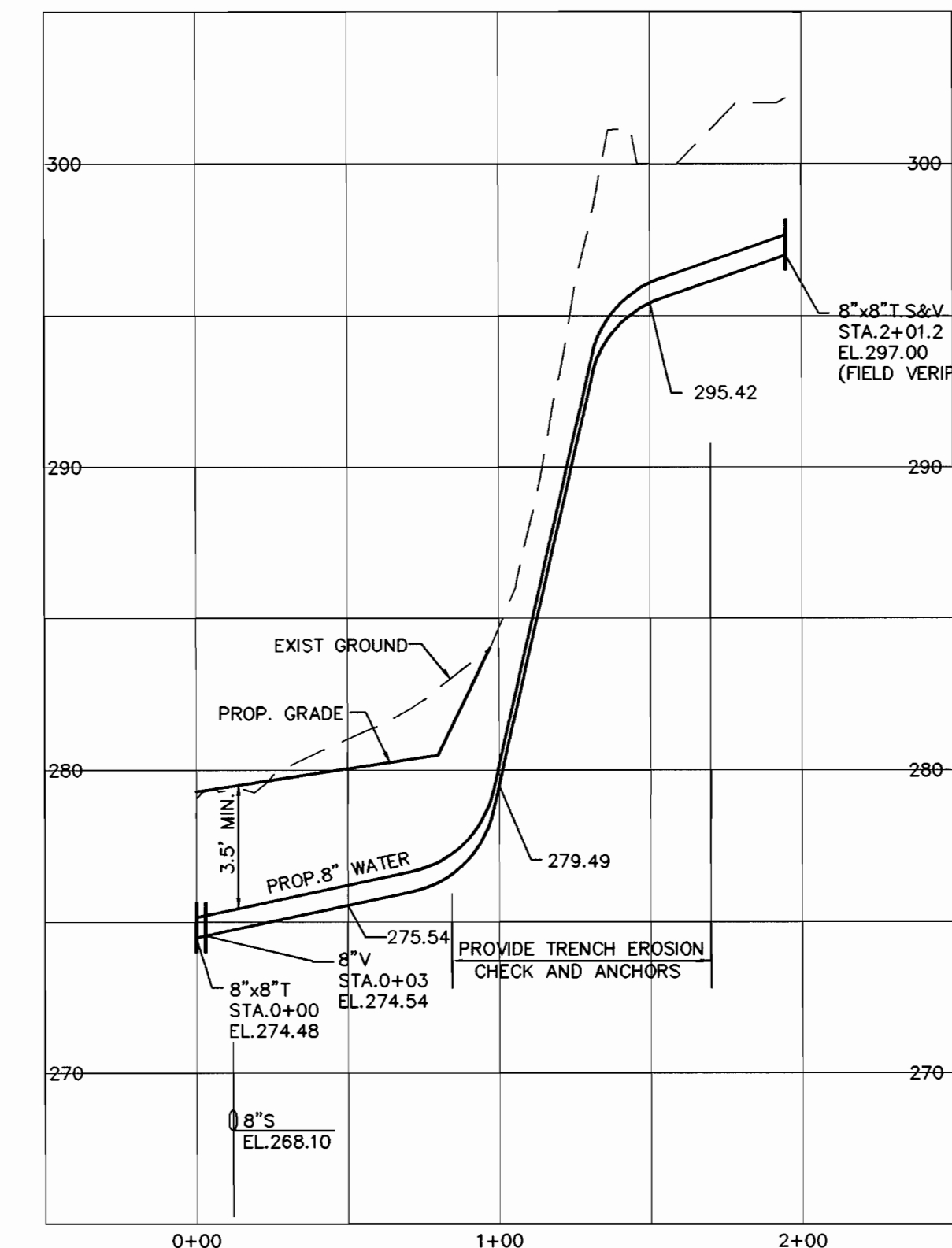
8" WATER PROFILE
MAIDSTONE PLACE
HORIZONTAL SCALE : 1" = 50'
VERTICAL SCALE : 1" = 5'



8" WATER PROFILE
MOUNT CARMEL PLACE
HORIZONTAL SCALE : 1" = 50'
VERTICAL SCALE : 1" = 5'



8" WATER PROFILE
HOLLY SPRING LANE
HORIZONTAL SCALE : 1" = 50'
VERTICAL SCALE : 1" = 5'



8" WATER PROFILE
EASEMENT
HORIZONTAL SCALE : 1" = 50'
VERTICAL SCALE : 1" = 5'

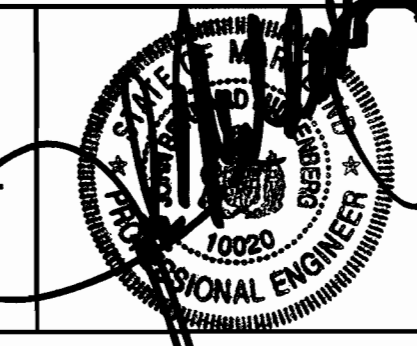
NOTE : THE EXISTING GROUND LINE IS BASED ON THE MASS GRADING PLAN FOR CORRIDOR ONE (SDP-96-20).

94044 (V.M.C.) PHASE 4 (W&S)

DEPARTMENT OF PUBLIC WORKS
HOWARD COUNTY, MARYLAND
Robert B. ... 11-27-00
CHIEF, BUREAU OF UTILITIES DATE

DEPARTMENT OF PLANNING & ZONING
HOWARD COUNTY, MARYLAND
... 12/15/00
CHIEF, DEVELOPMENT ENGINEERING DIVISION DATE

MILDENBERG, BOENDER & ASSOC., INC.
Engineers Planners Surveyors
5072 Dorsey Hall Drive, Suite 202, Ellicott City, Maryland 21042
(410) 997-0286 Fax: (301) 821-6521 Wash. (410) 997-0230 Fax

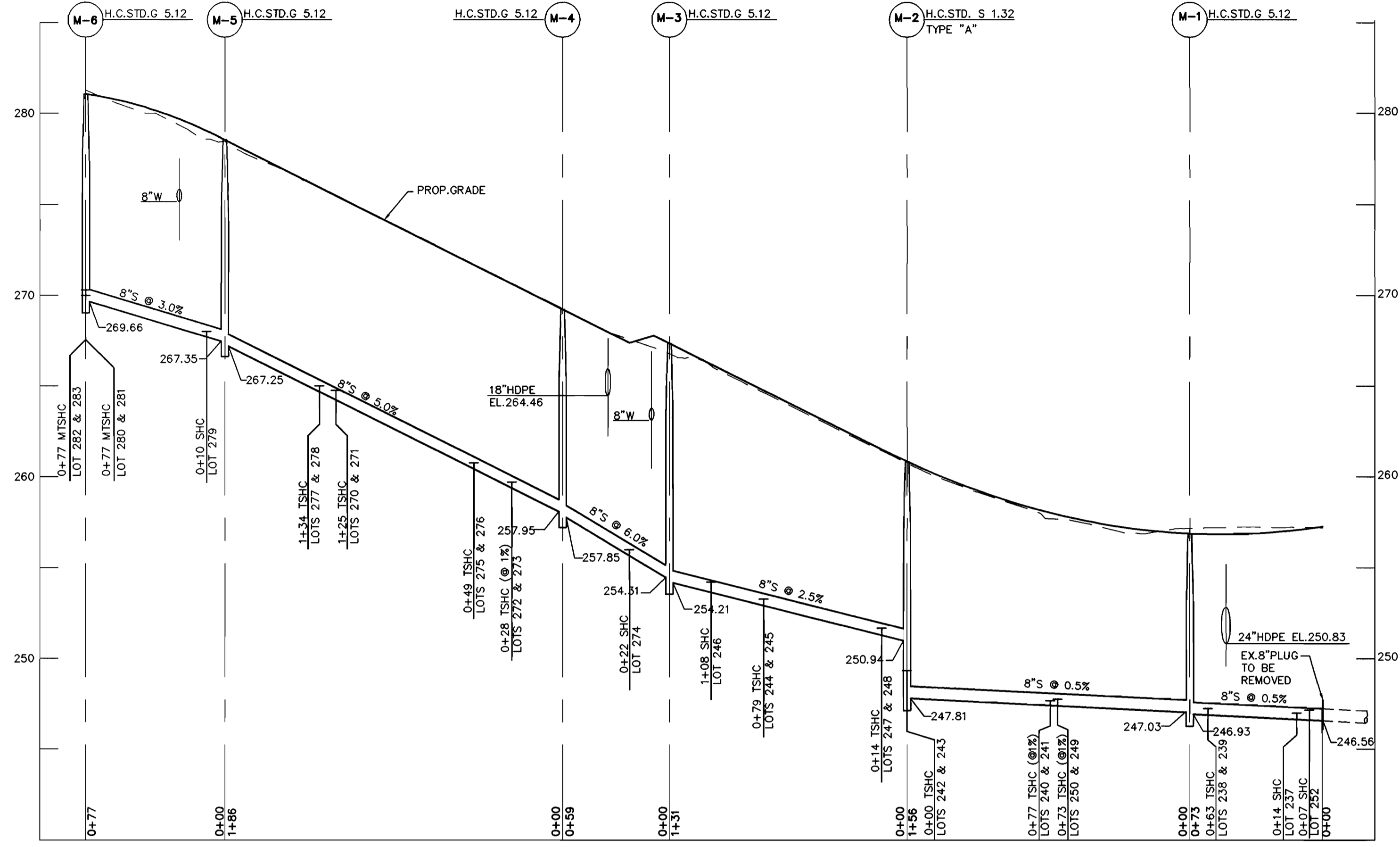


engineering	MMP				
illustration	MMP				
approval	RJH				
project	94044				
date	NOV. 2000	BY	NO.	REVISION	DATE

WATER PROFILES
600' SCALE MAP NO. 43 BLOCK NO. 3

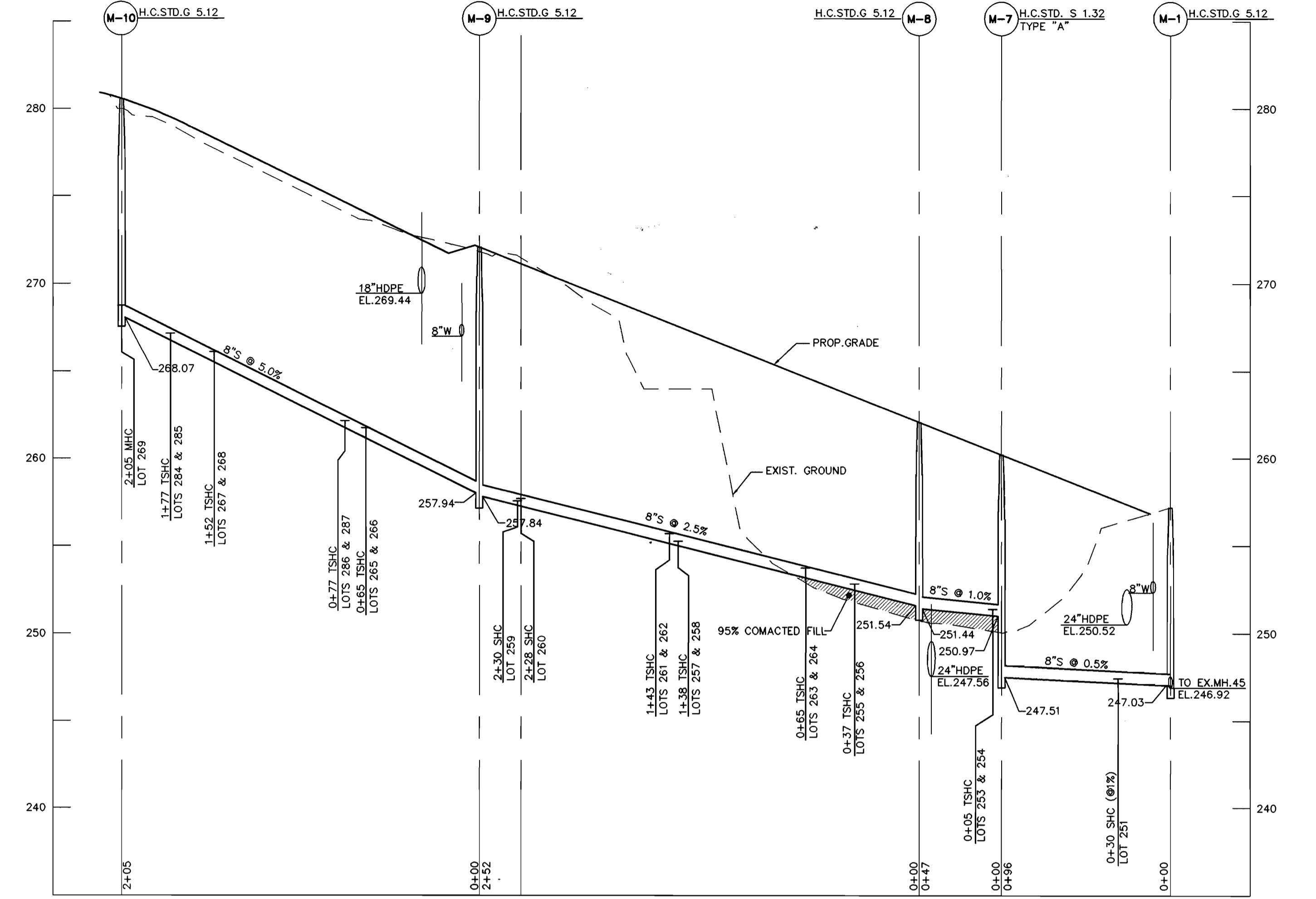
NEW COLONY VILLAGE
PHASE 5- UNITS 237 TO 287
CONTRACT NO. 14-3900-D
FIRST ELECTION DISTRICT
HOWARD COUNTY, MARYLAND

scale AS SHOWN
3 OF 4



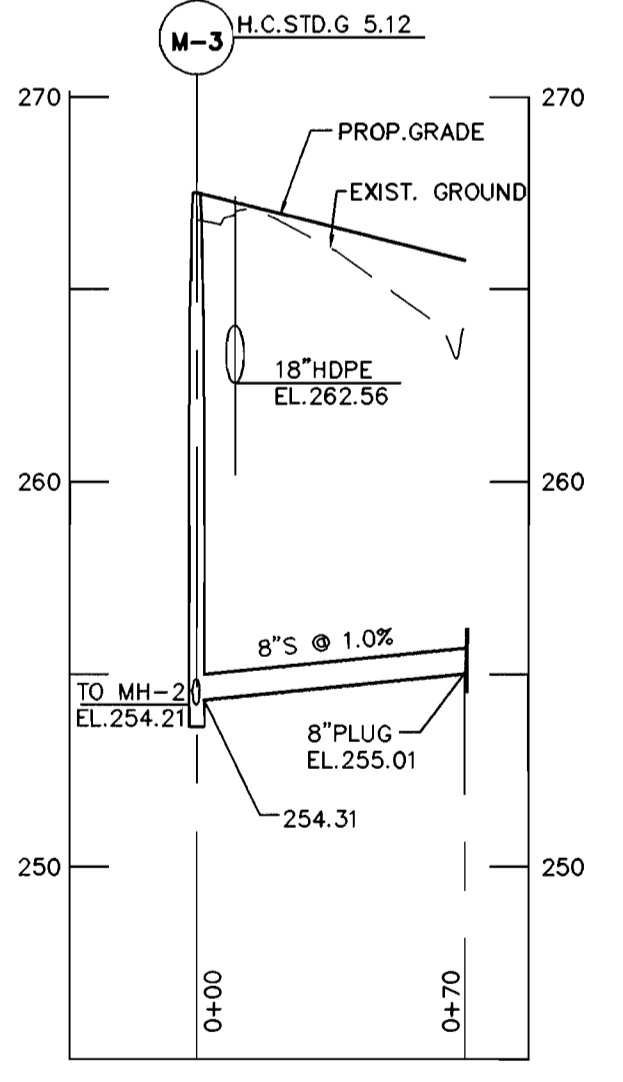
8" SEWER PROFILE
EXISTING 8" PLUG TO M-6

HORIZONTAL SCALE : 1" = 50'
 VERTICAL SCALE : 1" = 5'



8" SEWER PROFILE
M-1 TO M-9

HORIZONTAL SCALE : 1" = 50'
 VERTICAL SCALE : 1" = 5'



8" SEWER PROFILE
M-3 TO 8" PLUG

HORIZONTAL SCALE : 1" = 50'
 VERTICAL SCALE : 1" = 5'

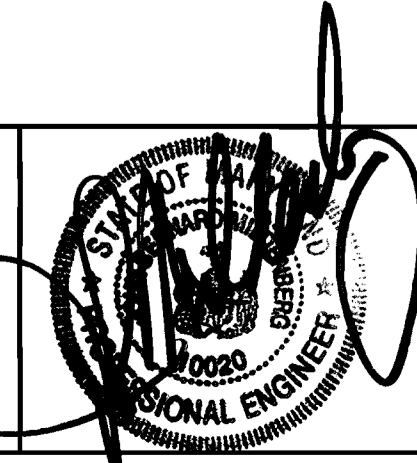
NOTE : THE EXISTING GROUND LINE IS BASED ON THE MASS GRADING PLAN FOR CORRIDOR ONE (SDP-96-20).

94044 (DWG) PHASE 5 (W&S)

DEPARTMENT OF PUBLIC WORKS
 HOWARD COUNTY, MARYLAND
 Chief, Bureau of Utilities
 11-27-00

DEPARTMENT OF PLANNING & ZONING
 HOWARD COUNTY, MARYLAND
 Chief, Development Engineering Division
 12/15/00

MILDENBERG, BOENDER & ASSOC., INC.
 Engineers Planners Surveyors
 5072 Dorsey Hall Drive, Suite 202, Ellicott City, Maryland 21042
 (410) 997-0296 Ball. (301) 621-5521 Wash. (410) 997-0298 Fax.



engineering	MMP				
illustration	MMP				
approval	RJH				
project	94044				
date	NOV.2000	BY	NO.	REVISION	DATE

SEWER PROFILES
 600' SCALE MAP NO. 43 BLOCK NO. 3

NEW COLONY VILLAGE
 PHASE 5 - UNITS 237 TO 287
 CONTRACT NO. 14-3900-D
 FIRST ELECTION DISTRICT
 HOWARD COUNTY, MARYLAND

scale AS SHOWN
 4 OF 4