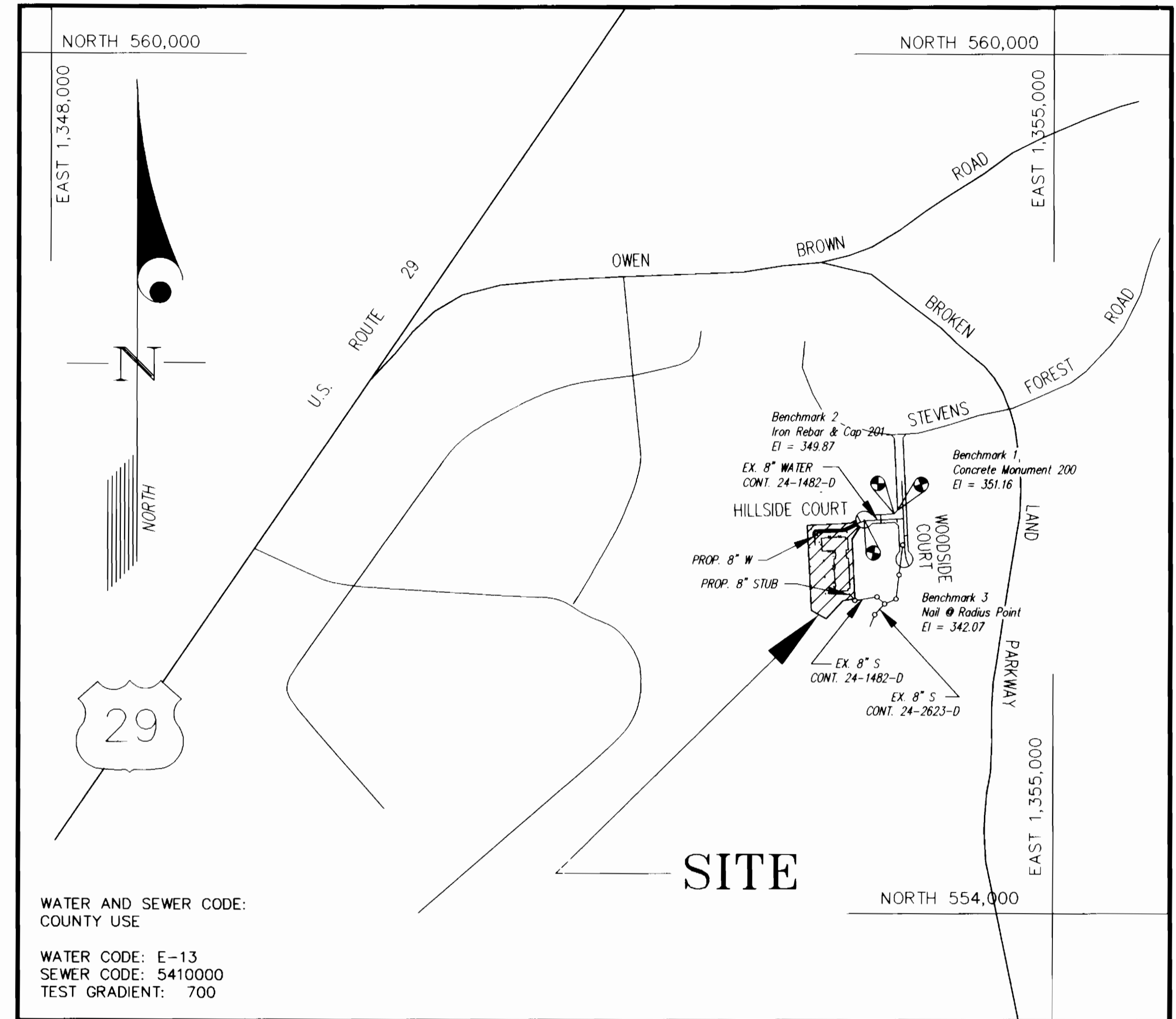


ITEMS	QUANTITIES ESTIMATED	AS-BUILT		
		QUANTITIES	TYPE	MANUFACTURER/SUPPLIER
8" 1/8 HB	3	2EA	J.F.	U.S. PIPE / A-1 PIPE
8" V	1	1EA	CATE VALVE	MUELLER/MUELLER
8"x6" FHT	1	1EA	M.J.F.	U.S. PIPE / A-1 PIPE
FIRE HYDRANT (4.5')	1	1EA	CENTURION	MUELLER/MUELLER
8" PLUG	1	~	~	~
8" D.I.P. (WATER)	331 L.F.	331 L.F.	TYTON JOINT	U.S. PIPE / A-1 PIPE
6" D.I.P. (WATER)	13 L.F.	10 L.F.	"	"
8" D.I.P. (SEWER)	16 L.F.	~	~	~
8" STOPPER	1	~	~	~

NAME OF UTILITY CONTRACTOR: IACOBI

SURVEY AND DRAFTING DIV. CHECKBOX: AS-BUILT DATE:



VICINITY MAP  
SCALE: 1"=600'

CONTRACT No. 24-3887-D

HOWARD COUNTY, MARYLAND  
DEPARTMENT OF PUBLIC WORKS

TYPE OF BUILDING	OFFICE
NUMBER OF UNITS	1
NUMBER OF S.H.C.'s	1
NUMBER OF W.H.C.'s	1
DRAINAGE AREA	LITTLE PATUXENT
TREATMENT PLANT	LITTLE PATUXENT

GENERAL NOTES

- PART I**
- Approximate location of existing mains are shown. The contractor shall take all necessary precautions to protect existing mains and services and maintain uninterrupted supply. Any damage incurred shall be repaired immediately to the satisfaction of the Engineer at the Contractor's expense.
  - All horizontal controls are based on Maryland State Coordinates [North American Datum 1983 (NAD '83)].
  - All vertical controls are based on U.S.G.S. data.
  - All pipe elevations shown are invert elevations.
  - Clear all utilities by a minimum of 6". Clear all poles by 2'-0" minimum or tunnel as required. The owner has contacted the utility companies and has made arrangements for bracing of poles as shown on the drawings. In the event the contractor's work requires the bracing of additional poles, any cost incurred by the owner for bracing of additional poles or damages shall be deducted from money owed the contractor. The contractor shall coordinate with the utility companies to schedule the bracing of the poles.
  - For details not shown on the drawings, and for materials and construction methods use Howard County Design Manual, Volume IV, Standard Specifications and Detail for Construction (Latest Edition). The contractor shall have a copy of Volume IV on the job.
  - Where test pits have been made on existing utilities, they are noted by the symbol at the location of the test pit. A note or notes containing the results of the test pit or pits is included on the drawings. Existing utilities in the vicinity of the proposed work for which test pits have not been dug shall be located by the contractor two weeks in advance of construction operations at his own expense.
  - Contractor shall notify the following utility companies or agencies at least (5) working days before starting work shown on these plans:
 

State Highway Administration	531-5533
BGE Contractor Services	850-4420
BGE Under Ground Damage Control	787-9068
Miss Utility	1-800-257-7777
Colonial Pipeline Co.	795-1390
Howard County Department of Public Works Bureau of Utilities	313-4900
  - Trees and shrubs are to be protected from damage to maximum extent. Trees and shrubs located within the construction strip are not to be removed or damaged by the contractor.
  - Contractor shall remove trees, stumps and roots along line of excavation. Payment for such removal shall be included in the unit price bid for construction of the main.
  - The contractor shall notify the Bureau of Highways, Howard County, at (410) 313-2450 at least five (5) working days before any open cut of any County road or boring/jacking operation on County roads for laying water/sewer mains or house connections. The approval of these drawings will constitute compliance with DPW requirement per Section 18.114(a) of the Howard County Code.
- PART II - WATER**
- All water mains to be D.I.P. Class 52 unless otherwise noted.
  - Tops of all water mains to have a minimum of 3-1/2' cover unless otherwise noted.
  - Valves adjacent to tees shall be strapped to tees.
  - All fittings shall be buttressed or anchored with concrete in accordance with the Standard Details unless otherwise provided for on the drawings.
  - Fire hydrants shall be set to the bury line elevations shown on the drawings. All fire hydrants shall be restrained and buttressed with concrete in accordance with the Standard Details. Soil around the fire hydrant shall be compacted in accordance with Section 1000 and 1005 of the Standard Specifications.
  - The contractor shall not operate any water main valves on the existing water system.
  - All water house connections shall be for inside meter setting unless otherwise noted on plans or in specifications.
  - For sprinkler system for all townhomes or multi-family dwelling units should have a minimum of 1" connection with a 3/4" meter.
- PART III - SEWER**
- All sewer mains shall be DIP and P.V.C. unless otherwise noted.
  - All manholes shall be 4' - 0" inside diameter unless otherwise noted.
  - Force mains shall be D.I.P. only.
  - Manholes shown with 12" and 16" walls are for brick manholes only.
  - Manholes designated W.T. in plan and profile shall have watertight frame and covers, Standard Detail C5.52. Where watertight frame and cover is used, set top of frame 1'-6" above finished grade unless otherwise noted on drawings.
  - House(s) with the symbol "C.N.S." indicates that cellar cannot be served.

Sediment Control Measures will be implemented in accordance with SDP 01-04.

REVIEWED FOR HOWARD SOIL CONSERVATION DISTRICT AND MEETS TECHNICAL REQUIREMENT.

*Cheryl Simmons* 8/30/00  
SIGNATURE DATE

U.S.D.A. NATURAL RESOURCES CONSERVATION SERVICE

THIS DEVELOPMENT PLAN IS APPROVED FOR SOIL EROSION AND SEDIMENT CONTROL BY THE HOWARD SOIL CONSERVATION DISTRICT

APPROVED:  
*John K. Robertson* 8/30/00  
HOWARD S.C.D. DATE

DEPARTMENT OF PUBLIC WORKS  
HOWARD COUNTY, MARYLAND

*Robert D. ...* 8-29-00  
CHIEF, BUREAU OF UTILITIES DATE

DEPARTMENT OF PLANNING AND ZONING  
HOWARD COUNTY, MARYLAND

*John D. ...* 9/5/00  
CHIEF, DEVELOPMENT ENGINEERING DIVISION DATE

GLW GUTSCHICK LITTLE & WEBER, P.A.  
CIVIL ENGINEERS, LAND SURVEYORS, LAND PLANNERS, LANDSCAPE ARCHITECTS  
3909 NATIONAL DRIVE - SUITE 250 - BURTONTOWN, MARYLAND 20866  
TEL. 301-421-4024 BALT. 410-880-1820 DC/VA. 301-989-2524 FAX. 301-421-4186



DES: SCC			
DRN: BB			
CHK: SCC			
DATE: 8/00			
KCI	I	AS-BUILT CONDITIONS ADDED TO PLAN	8/28/00
BY	NO	REVISION	DATE

WATER & SEWER COVER SHEET

600' SCALE MAP NO. 36 BLOCK NO. 14

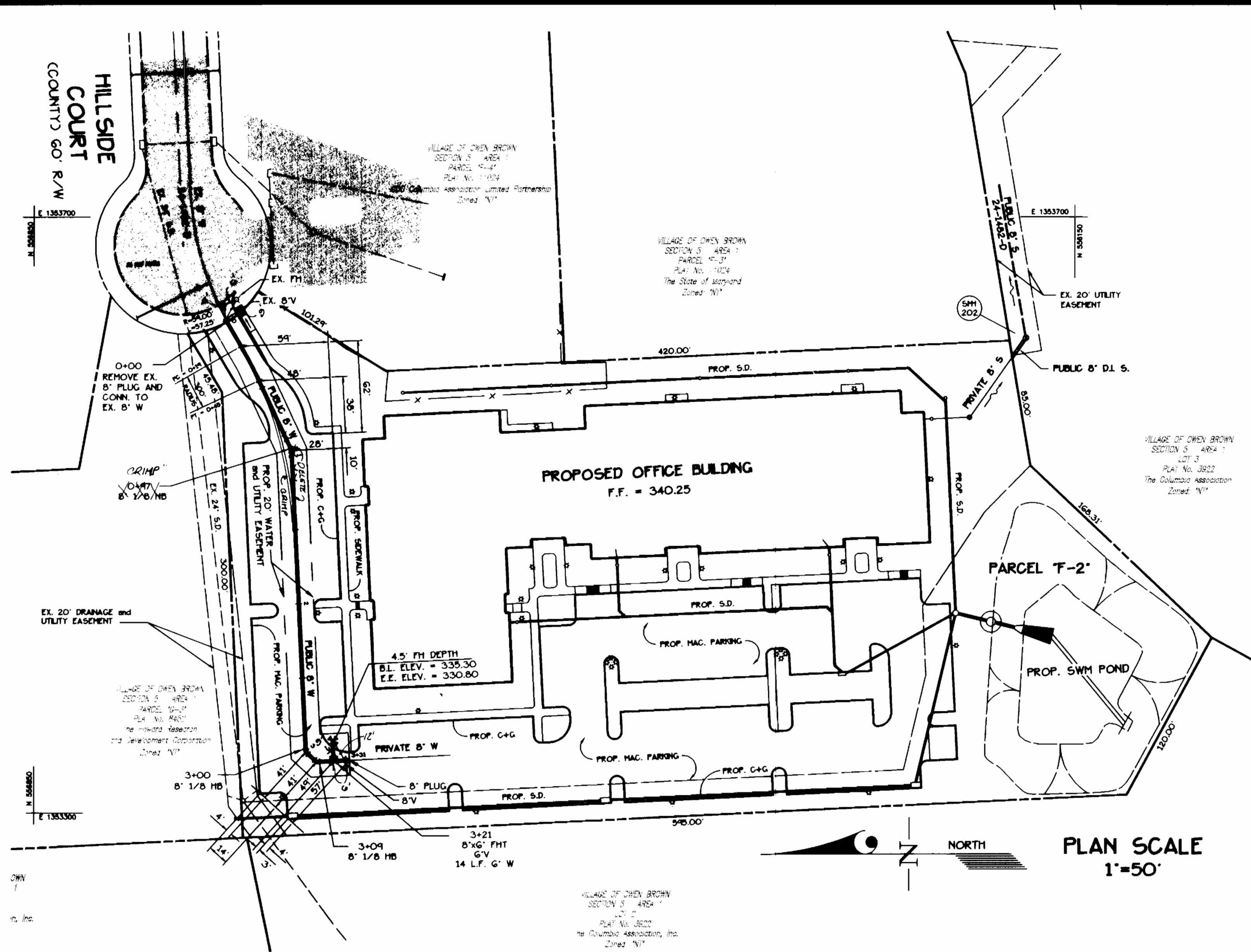
VILLAGE OF OWEN BROWN  
CONTRACT# 24-3887-D  
SECTION 5 AREA 1  
PARCEL "F-2"  
PLAT No. 7044

GLW ELECTION DISTRICT No. 6  
HOWARD COUNTY, MARYLAND

GLW FILE No. 99115

SCALE AS SHOWN

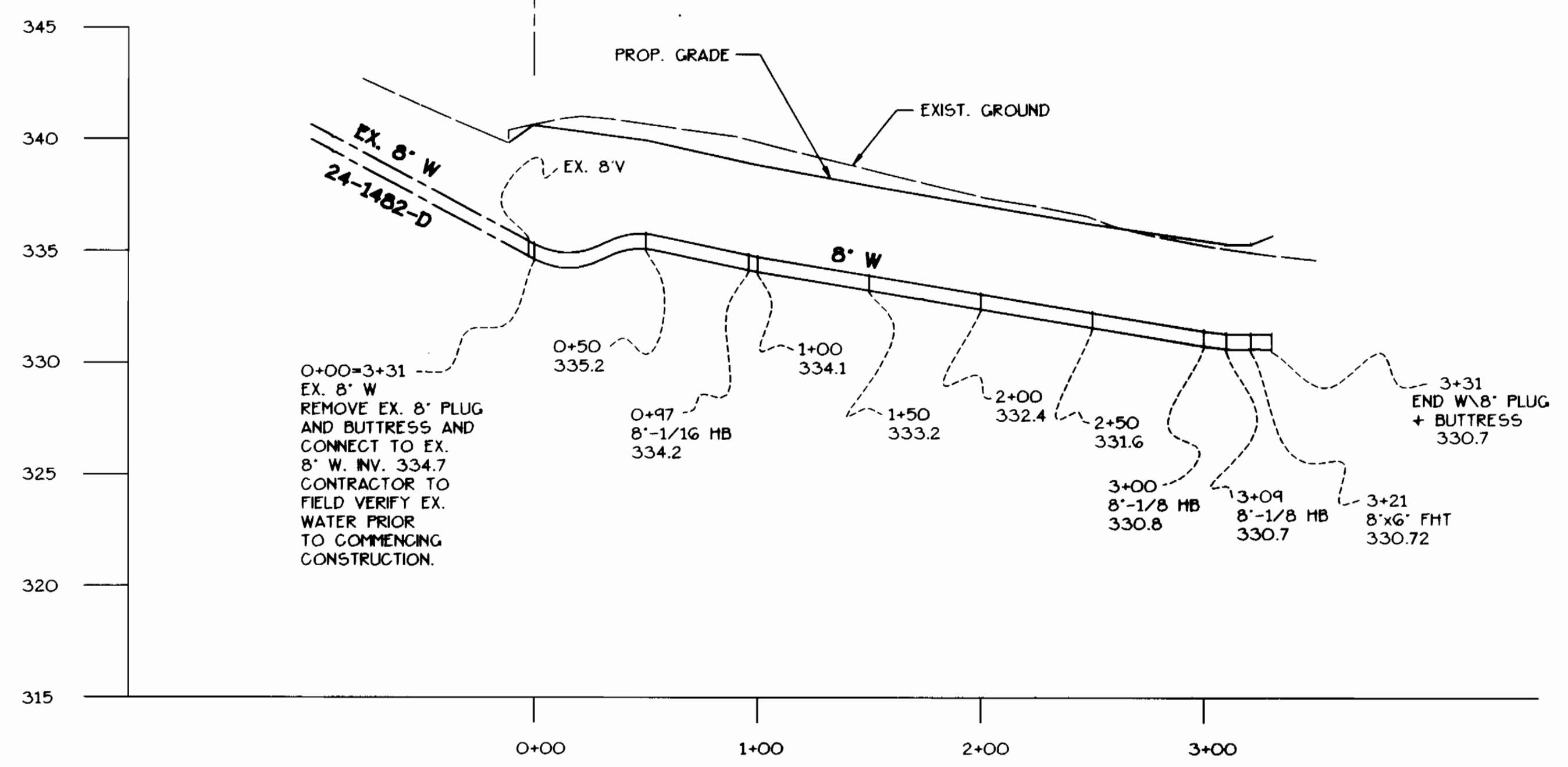
SHEET 1 OF 2



PLAN SCALE  
1"=50'

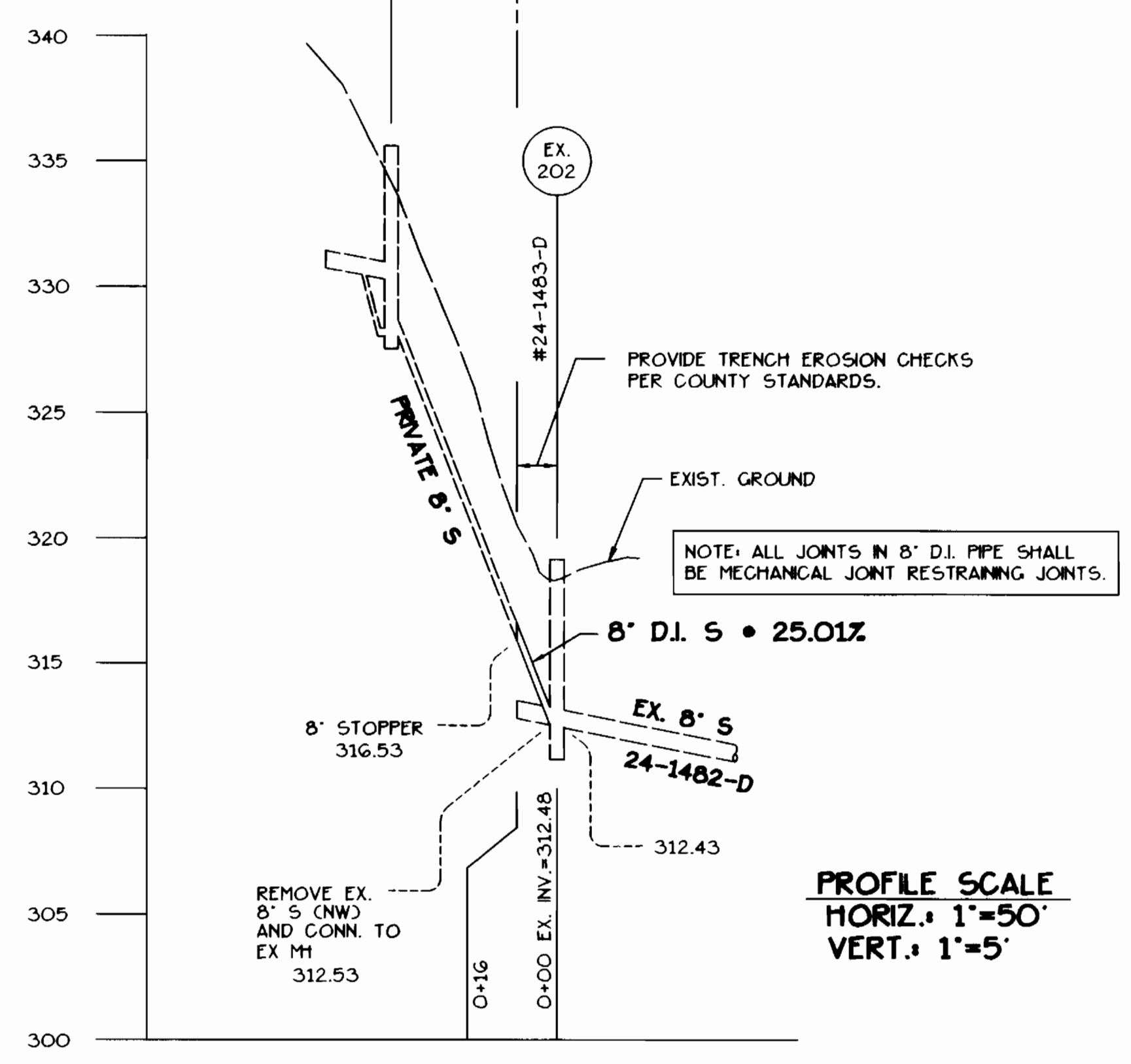
HILLSIDE COURT PARCEL F-2

PROFILE SCALE  
HORIZ. 1"=50'  
VERT. 1"=5'



PARCEL F-2 LOT 3

PROFILE SCALE  
HORIZ. 1"=50'  
VERT. 1"=5'



DEPARTMENT OF  
PUBLIC WORKS  
HOWARD COUNTY, MARYLAND  
8-29-00

DEPARTMENT OF  
PLANNING AND ZONING  
HOWARD COUNTY, MARYLAND

GLW GUTSCHICK LITTLE & WEBER, P.A.  
CIVIL ENGINEERS, LAND SURVEYORS, LAND PLANNERS, LANDSCAPE ARCHITECTS  
3909 NATIONAL DRIVE - SUITE 250 - BURTOWNSVILLE OFFICE PARK  
BURTOWNSVILLE, MARYLAND 20896  
TEL: 301-421-4024 BAL: 410-860-1820 DC/VA: 301-989-2524 FAX: 301-421-4186



DES: SCC				
DRN: BB				
CHK: SCC				
DATE: 8/00	KCI	1	AS BUILT CONDITIONS ADDED TO PLAN	8/29/01
	BY	NO	REVISION	DATE

PUBLIC WATER & SEWER  
PLAN and PROFILES  
600' SCALE MAP NO. 36 BLOCK NO. 14

VILLAGE OF OWEN BROWN  
CONTRACT# 24-3887-D  
SECTION 5 AREA 1  
PARCEL "F-2"  
PLAT No. 7044  
GLFORD ELECTION DISTRICT No. 6  
HOWARD COUNTY, MARYLAND

GLW FILE No.  
99115  
SCALE  
AS  
SHOWN  
SHEET  
2 OF 2