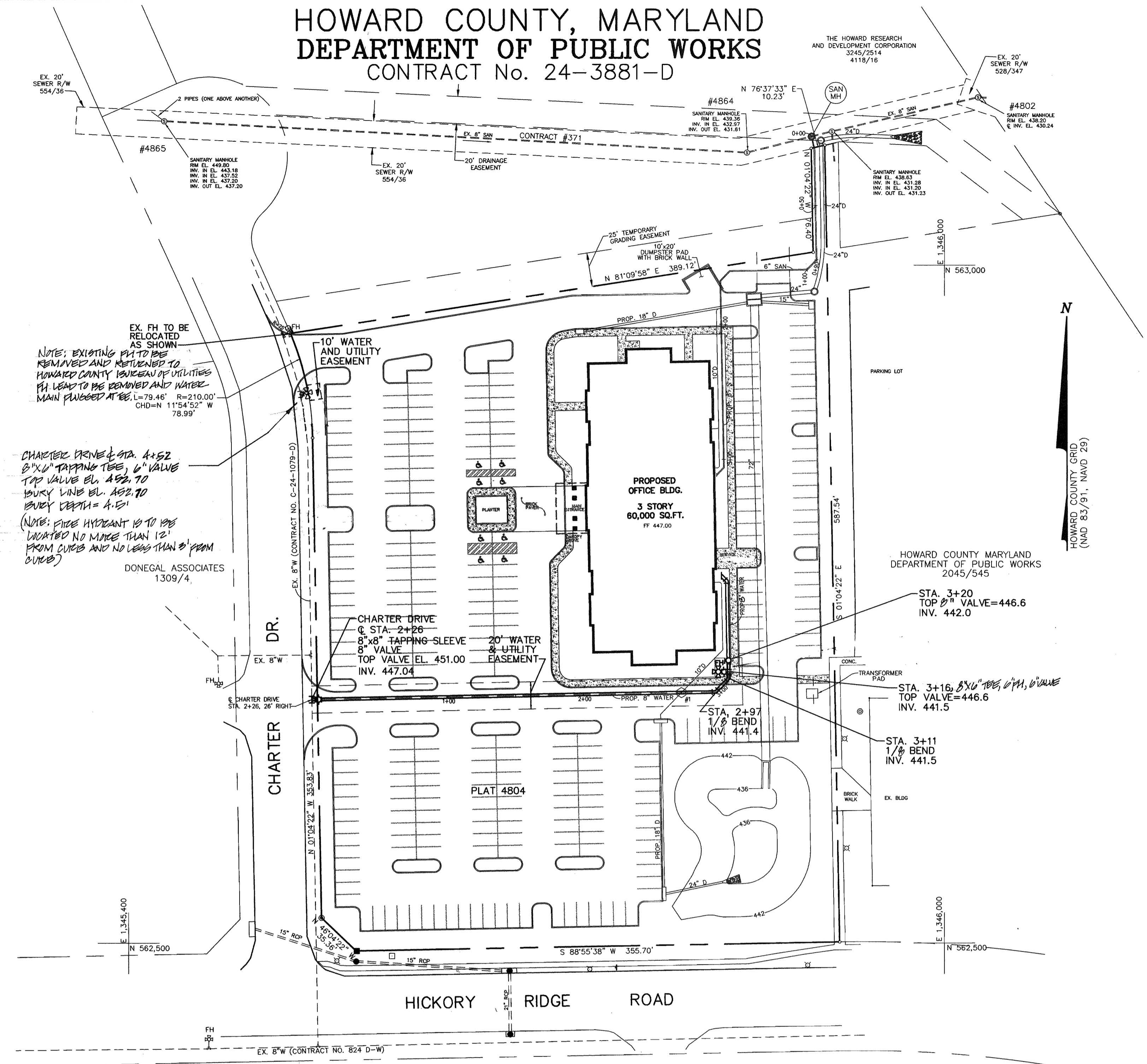


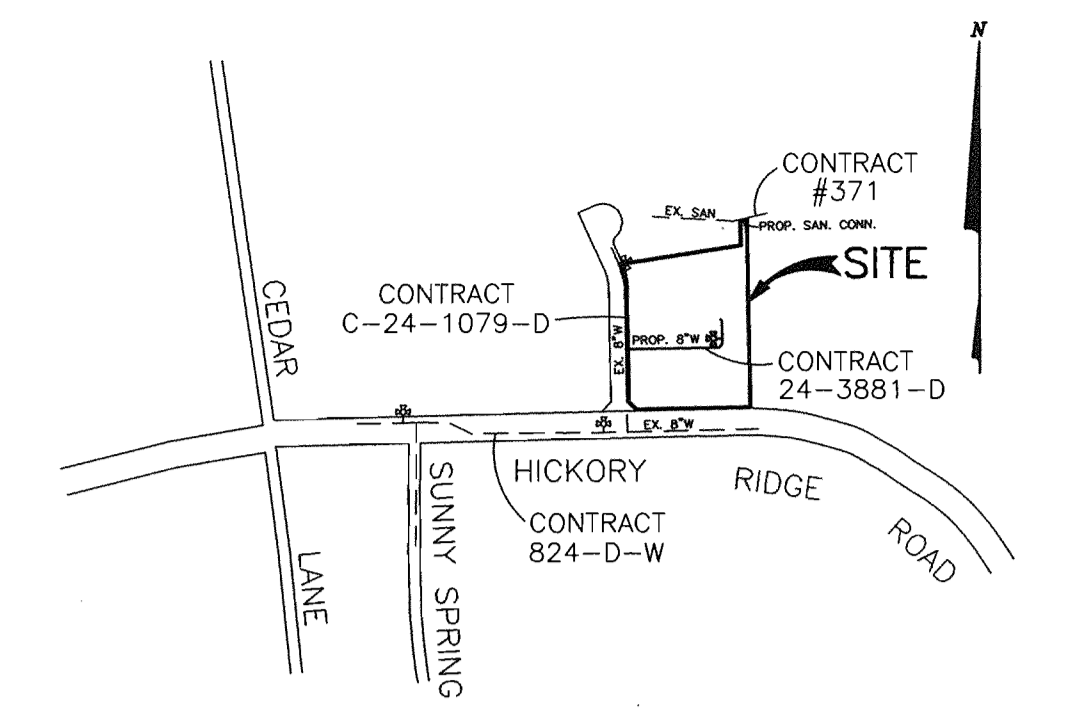
HOWARD COUNTY, MARYLAND
DEPARTMENT OF PUBLIC WORKS
CONTRACT No. 24-3881-D

| QUANTITIES | | AS-BUILT | | |
|------------------------------|----------------------|------------|------|-----------------------|
| ITEMS | QUANTITIES ESTIMATED | QUANTITIES | TYPE | MANUFACTURER/SUPPLIER |
| 8" WATER | 318 LF | | | |
| 6" WATER | 14 LF | | | |
| FIRE HYDRANT | 2 EA. | | | |
| 8" x 8" TAPPING SLEEVE 8" V. | 1 EA. | | | |
| 6" VALVE | 2 EA. | | | |
| 6" PVC | 10 LF | | | |
| SANITARY MANHOLE | 1 EA. | | | |
| 8" x 8" TAPPING TEE | 1 EA. | | | |
| NAME OF UTILITY CONTRACTOR: | | | | |

| | |
|--------------------|-----------------|
| TYPE OF BUILDING | COMMERCIAL |
| NUMBER OF UNITS | N/A |
| NUMBER OF S.H.C.'s | 1 |
| NUMBER OF W.H.C.'s | 1 |
| DRAINAGE AREA | LITTLE PATUXENT |
| TREATMENT PLANT | |



WATER AND SEWER CODE FOR COUNTY USE ONLY
SEWER CODE 5522500
WATER NO. 107

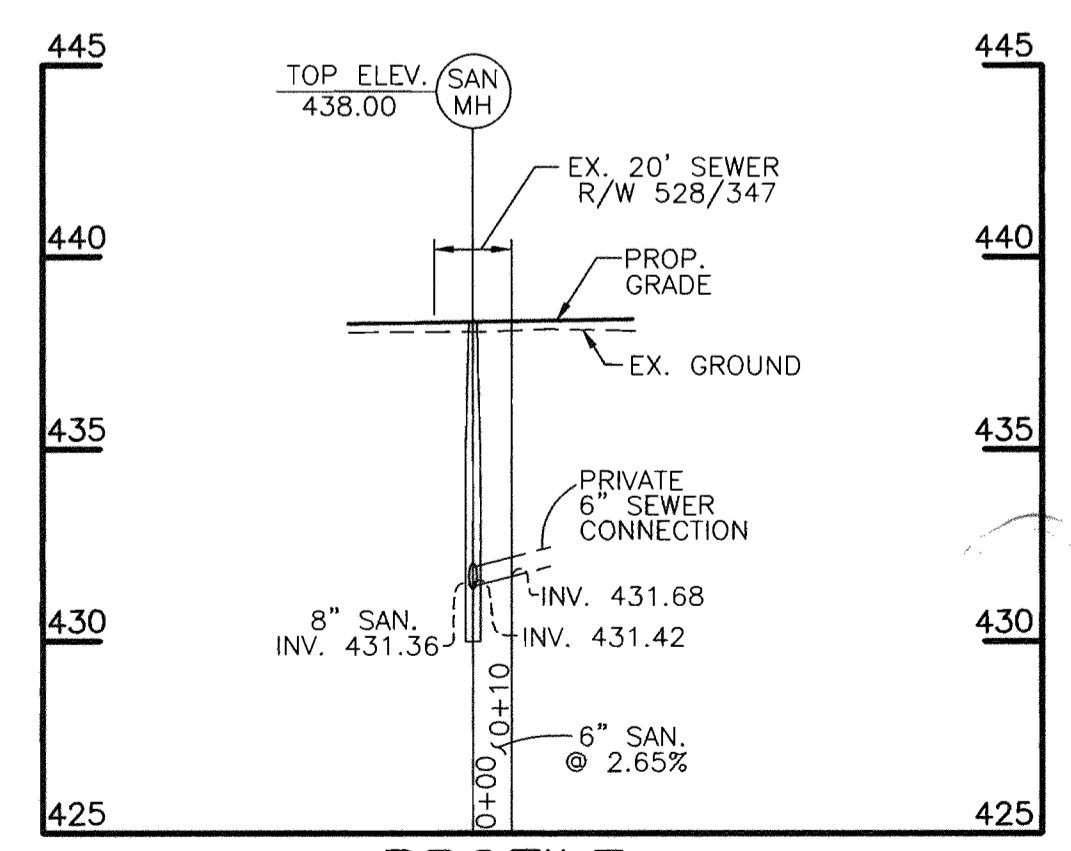


VICINITY MAP
SCALE: 1"=600'

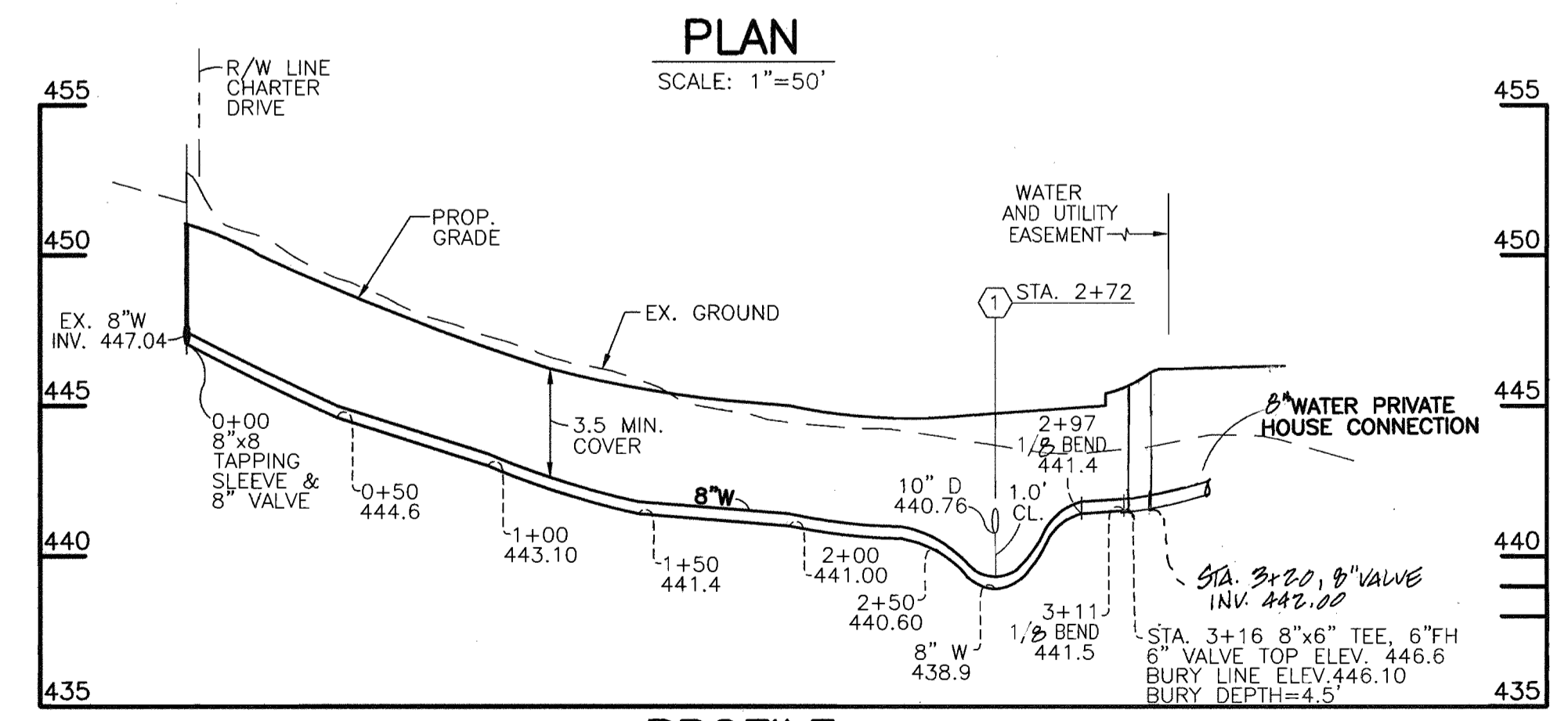
GENERAL NOTES

- PART I**
- Approximate location of existing mains are shown. The contractor shall take all necessary precautions to protect existing mains and services and maintain uninterrupted supply. Any damage incurred shall be repaired immediately to the satisfaction of the Engineer at the Contractor's expense.
 - All horizontal controls are based on Maryland State Coordinates [North American Datum 1983 (NAD '83)].
 - All vertical controls are based on U.S.G.S. data.
 - All pipe elevations shown are invert elevations.
 - Clear all utilities by a minimum of 6". Clear all poles by 2'-0" minimum or tunnel as required. The owner has contacted the utility companies and has made arrangements for bracing of poles as shown on the drawings. In the event the contractor's work requires the bracing of additional poles, any cost incurred by the owner for bracing of additional poles or damages shall be deducted from money owed the contractor. The contractor shall coordinate with the utility companies to schedule the bracing of the poles.
 - For details not shown on the drawings, and for materials and construction methods use Howard County Design Manual, Volume IV, Standard Specifications and Detail for Construction (Latest Edition). The contractor shall have a copy of Volume IV on the job.
 - Where test pits have been made on existing utilities, they are noted by the symbol \square at the location of the test pit. A note or notes containing the results of the test pit or pits is included on the drawings. Existing utilities in the vicinity of the proposed work for which test pits have not been dug shall be located by the contractor two weeks in advance of construction operations at his own expense.
 - Contractor shall notify the following utility companies or agencies at least (5) working days before starting work shown on these plans:
State Highway Administration
BGE Contractor Services
BGE Under Ground Damage Control
Miss Utility
Colonial Pipeline Co.
Howard County Department of Public Works
Bureau of utilities
 - Trees and shrubs are to be protected from damage to maximum extent. Trees and shrubs located within the construction strip are not to be removed or damaged by the contractor.
 - Contractor shall remove trees, stumps and roots along line of excavation. Payment for such removal shall be included in the unit price bid for construction of the main.
 - The contractor shall notify the Bureau of Highways, Howard County, at (410) 313-2450 at least five (5) working days before any open cut of any County road or boring/jacking operation on County roads for laying water/sewer mains or house connections. The approval of these drawings will constitute compliance with DPW requirement per Section 18.114(a) of the Howard County Code.
- PART II - WATER**
- All water mains to be D.I.P. Class 52 unless otherwise noted.
 - Tops of all water mains to have a minimum of 3-1/2' cover unless otherwise noted.
 - Valves adjacent to tees shall be strapped to tees.
 - All fittings shall be buttressed or anchored with concrete in accordance with the Standard Details unless otherwise provided for on the drawings.
 - Fire hydrants shall be set to the bury line elevations shown on the drawings. All fire hydrants shall be restrained and buttressed with concrete in accordance with the Standard Details. Soil around the fire hydrant shall be compacted in accordance with Section 1000 and 1005 of the Standard Specifications.
 - The contractor shall not operate any water main valves on the existing water system.
 - All water house connections shall be for inside meter setting unless otherwise noted on plans or in specifications.
 - For sprinkler system for all townhomes or multi-family dwelling units should have a minimum of 1' connection with a 3/4" meter.
- PART III - SEWER**
- All sewer mains shall be DIP and P.V.C. unless otherwise noted.
 - All manholes shall be 4'-0" inside diameter unless otherwise noted.
 - Force mains shall be D.I.P. only.
 - Manholes shown with 12" and 16" walls are for brick manholes only.
 - Manholes designated W.T. in plan and profile shall have watertight frame and covers, Standard Detail G5.52. Where watertight frame and cover is used, set top of frame 1'-6" above finished grade unless otherwise noted on drawings.
 - House(s) with the symbol "C.N.S." indicates that cellar cannot be served.

NOTE:
Plan shall utilize controls for sediment + erosion, installed under SDP.00.193



PROFILE
SCALE: HORIZ. 1"=50'
VERT. 1"=5'



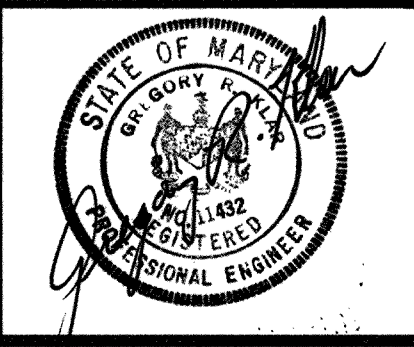
PROFILE
SCALE: HORIZ. 1"=50'
VERT. 1"=5'

REVIEWED FOR HOWARD SOIL CONSERVATION DISTRICT AND MEETS TECHNICAL REQUIREMENT.
[Signature] 9/25/00
U.S.D.A. NATURAL RESOURCES CONSERVATION SERVICE
APPROVED: *[Signature]* 9/25/00
NRC5

DEPARTMENT OF PUBLIC WORKS
HOWARD COUNTY, MARYLAND
9-15-00
DATE

DEPARTMENT OF PLANNING AND ZONING
HOWARD COUNTY, MARYLAND
9/16
DATE

CENTURY ENGINEERING, INC.
CONSULTING ENGINEERS, PLANNERS, SURVEYORS
32 WEST ROAD
TOWSON, MARYLAND 21204
(410) 823-8070



| | |
|----------|----|
| DES: | |
| DRN: | |
| CHK: | |
| DATE: | |
| BY | NO |
| REVISION | |
| DATE | |

CONTRACT 24-3881-D
600' SCALE MAP NO. 35 BLOCK NO. 5.6

TOWN CENTER
SECTION 8 AREA 4 PARCEL 'D'
WATER AND SEWER EXTENSION
5TH ELECTION DISTRICT
HOWARD COUNTY, MARYLAND

SCALE AS SHOWN
SHEET 1 OF 1

CONTRACT No. 24-3881-D

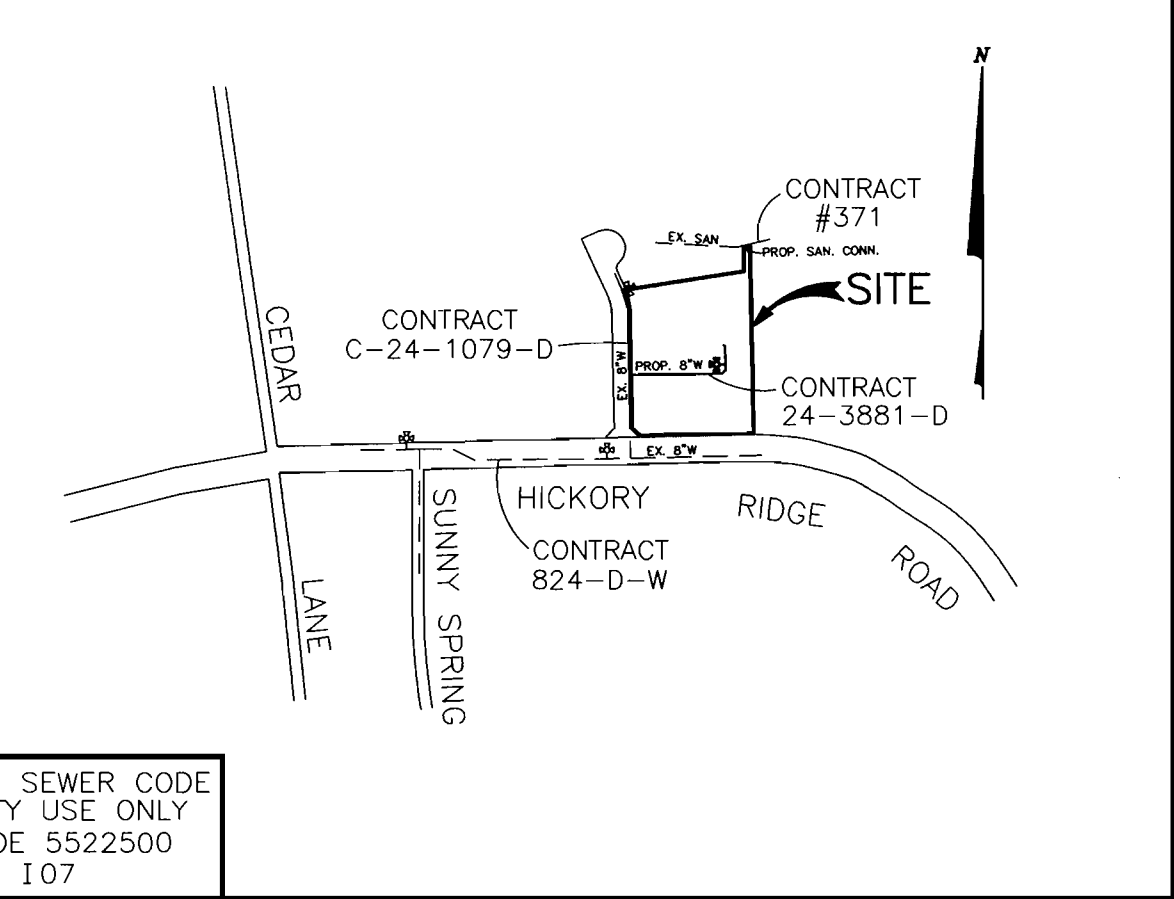
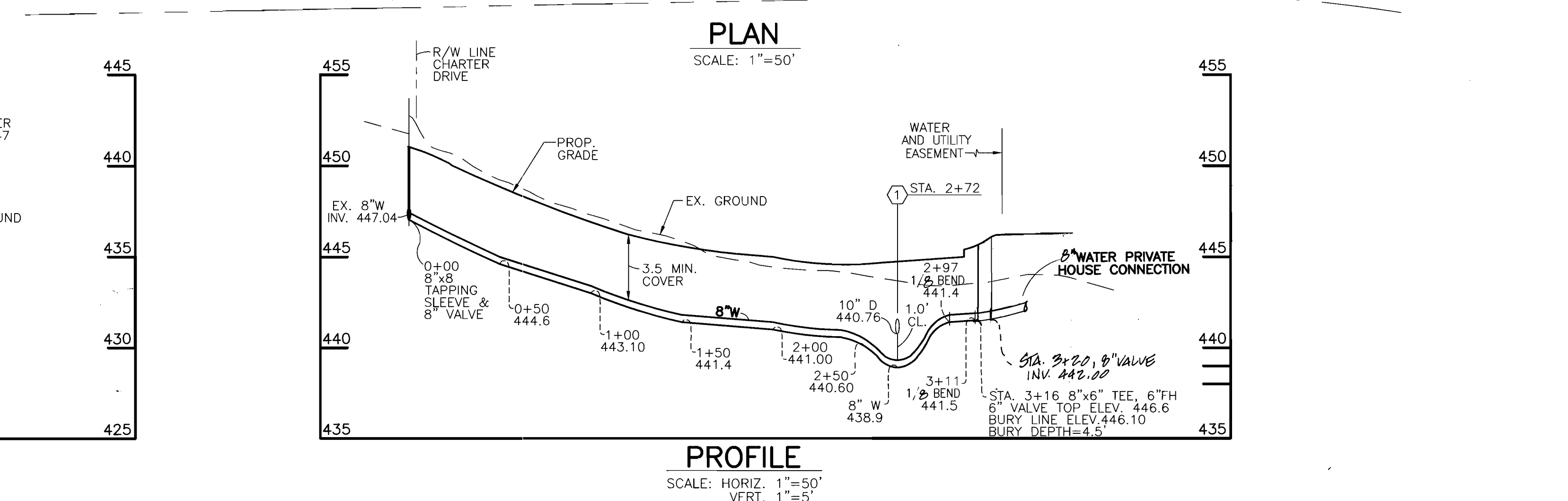
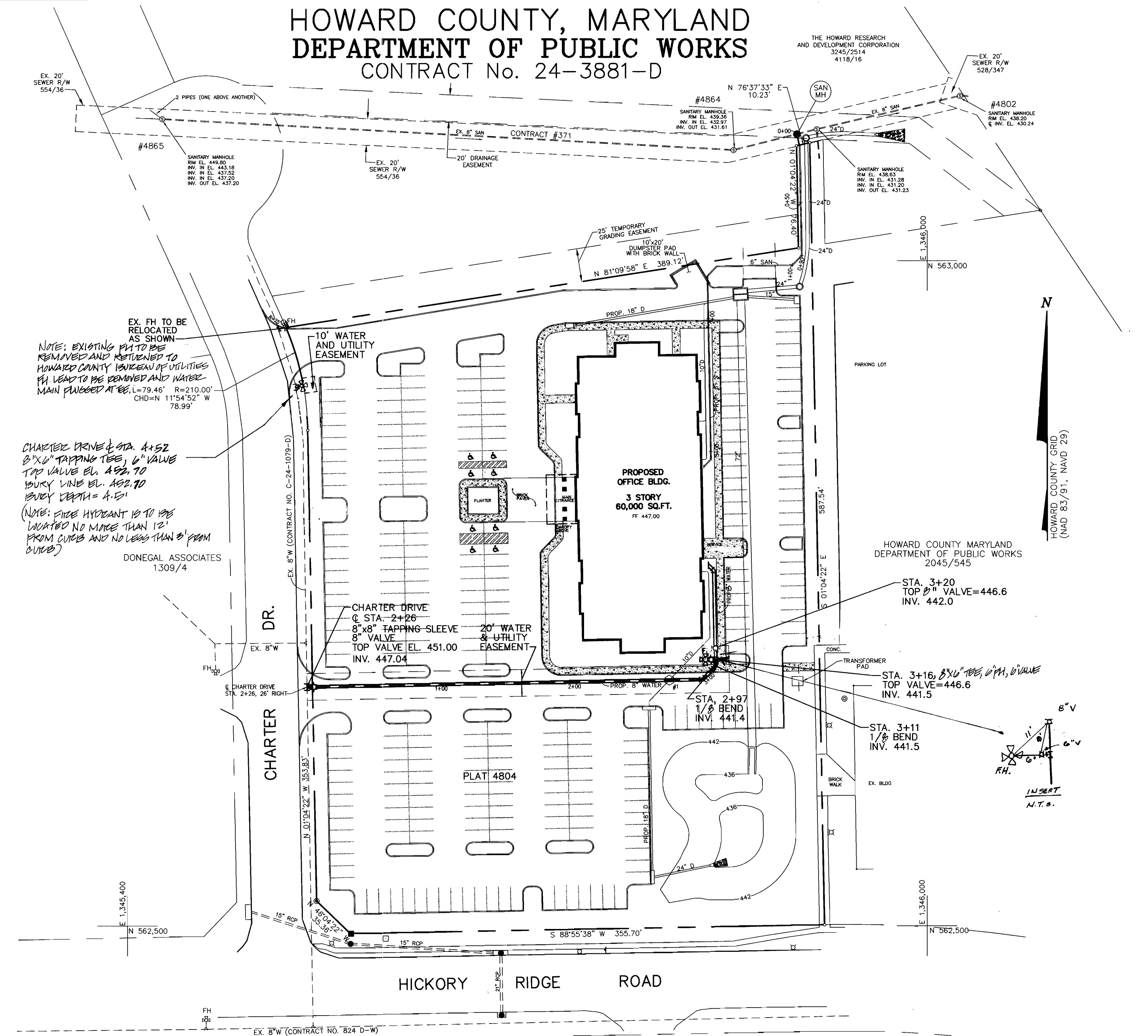
HOWARD COUNTY, MARYLAND
DEPARTMENT OF PUBLIC WORKS
CONTRACT No. 24-3881-D

| ITEMS | QUANTITIES ESTIMATED | AS-BUILT | | |
|---------------------------|----------------------|------------|--------|-----------------------|
| | | QUANTITIES | TYPE | MANUFACTURER/SUPPLIER |
| 8" WATER | 318 LF | 320 L.F. | D.I.P. | GRIFFIN PIPE |
| 6" WATER | 14 LF | 14 L.F. | D.I.P. | GRIFFIN PIPE |
| FIRE HYDRANT | 2 EA. | 2 EA. | | AMERICAN |
| 8"x8 TAPPING SLEEVE 8" V. | 1 EA. | 1 EA. | | AMERICAN |
| 6" VALVE | 2 EA. | 2 EA. | | AMERICAN |
| 6" PVC | 10 LF | 10 L.F. | P.V.C. | ATLANTIC CONCRETE |
| SANITARY MANHOLE | 1 EA. | 1 EA. | | AMERICAN |
| 8"x8 TAPPING TEE | 1 EA. | 1 EA. | | AMERICAN |

NAME OF UTILITY CONTRACTOR: ROSS

SURVEY AND DRAFTING DIV. CHECKBOX: AS-BUILT DATE:

| | |
|--------------------|-----------------|
| TYPE OF BUILDING | COMMERCIAL |
| NUMBER OF UNITS | N/A |
| NUMBER OF S.H.C.'s | 1 |
| NUMBER OF W.H.C.'s | 1 |
| DRAINAGE AREA | LITTLE PATUXENT |
| TREATMENT PLANT | |



WATER AND SEWER CODE FOR COUNTY USE ONLY
SEWER CODE 5522500
WATER NO. 107

VICINITY MAP
SCALE: 1"=600'

GENERAL NOTES

- PART I**
- Approximate location of existing mains are shown. The contractor shall take all necessary precautions to protect existing mains and services and maintain uninterrupted supply. Any damage incurred shall be repaired immediately to the satisfaction of the Engineer at the Contractor's expense.
 - All horizontal controls are based on Maryland State Coordinates [North American Datum 1983 (NAD '83)].
 - All vertical controls are based on U.S.G.S. data.
 - All pipe elevations shown are invert elevations.
 - Clear all utilities by a minimum of 6". Clear all poles by 2'-0" minimum or tunnel as required. The owner has contacted the utility companies and has made arrangements for bracing of poles as shown on the drawings. In the event the contractor's work requires the bracing of additional poles, any cost incurred by the owner for bracing of additional poles or damages shall be deducted from money owed the contractor. The contractor shall coordinate with the utility companies to schedule the bracing of the poles.
 - For details not shown on the drawings, and for materials and construction methods use Howard County Design Manual, Volume IV, Standard Specifications and Detail for Construction (Latest Edition). The contractor shall have a copy of Volume IV on the job.
 - Where test pits have been made on existing utilities, they are noted by the symbol \square at the location of the test pit. A note or notes containing the results of the test pit or pits is included on the drawings. Existing utilities in the vicinity of the proposed work for which test pits have not been dug shall be located by the contractor two weeks in advance of construction operations at his own expense.
 - Contractor shall notify the following utility companies or agencies at least (5) working days before starting work shown on these plans:
State Highway Administration
BGE Contractor Services
BGE Under Ground Damage Control
Miss Utility
Colonial Pipeline Co.
Howard County Department of Public Works
Bureau of utilities
 - Trees and shrubs are to be protected from damage to maximum extent. Trees and shrubs located within the construction strip are not to be removed or damaged by the contractor.
 - Contractor shall remove trees, stumps and roots along line of excavation. Payment for such removal shall be included in the unit price bid for construction of the main.
 - The contractor shall notify the Bureau of Highways, Howard County, at (410) 313-2450 at least five (5) working days before any open cut on any County road or boring/jacking operation on County roads for laying water/sewer mains or house connections. The approval of these drawings will constitute compliance with DPW requirement per Section 18.114(a) of the Howard County Code.
- PART II - WATER**
- All water mains to be D.I.P. Class 52 unless otherwise noted.
 - Tops of all water mains to have a minimum of 3-1/2' cover unless otherwise noted.
 - Valves adjacent to tees shall be strapped to tees.
 - All fittings shall be buttressed or anchored with concrete in accordance with the Standard Details unless otherwise provided for on the drawings.
 - Fire hydrants shall be set to the bury line elevations shown on the drawings. All fire hydrants shall be restrained and buttressed with concrete in accordance with the Standard Details. Soil around the fire hydrant shall be compacted in accordance with Section 1000 and 1005 of the Standard Specifications.
 - The contractor shall not operate any water main valves on the existing water system.
 - All water house connections shall be for inside meter setting unless otherwise noted on plans or in specifications.
 - For sprinkler system for all townhomes or multi-family dwelling units should have a minimum of 1' connection with a 3/4" meter.
- PART III - SEWER**
- All sewer mains shall be D.I.P. and P.V.C. unless otherwise noted.
 - All manholes shall be 4'-0" inside diameter unless otherwise noted.
 - Force mains shall be D.I.P. only.
 - Manholes shown with 12" and 16" walls are for brick manholes only. Manholes designated W.T. in plan and profile shall have watertight frame and covers, Standard Detail 65.52. Where watertight frame and cover is used, set top of frame 1'-6" above finished grade unless otherwise noted on drawings.
 - House(s) with the symbol "C.N.S." indicates that cellar cannot be served.

NOTE:
Plan shall utilize controls for sediment + erosion, installed under SDP.00.193

REVIEWED FOR HOWARD SOIL CONSERVATION DISTRICT AND MEETS TECHNICAL REQUIREMENT.

[Signature] 9/25/00
DATE

U.S.D.A. NATURAL RESOURCES CONSERVATION SERVICE

THIS DEVELOPMENT PLAN IS APPROVED FOR SOIL EROSION AND SEDIMENT CONTROL BY THE HOWARD SOIL CONSERVATION DISTRICT

APPROVED: *[Signature]* 9/25/00
DATE

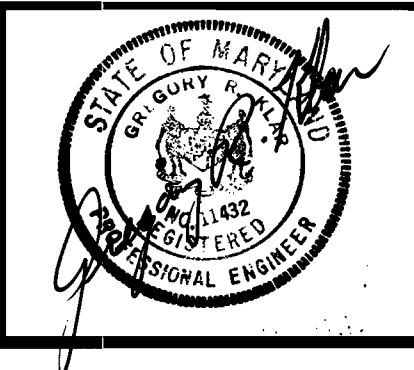
DEPARTMENT OF PUBLIC WORKS
HOWARD COUNTY, MARYLAND

[Signature] 9-15-00
DATE

DEPARTMENT OF PLANNING AND ZONING
HOWARD COUNTY, MARYLAND

[Signature] 9/16
DATE

CENTURY ENGINEERING, INC.
CONSULTING ENGINEERS, PLANNERS, SURVEYORS
32 WEST ROAD
TOWSON, MARYLAND 21204
(410) 823-8070



| | |
|-------|----------|
| DES: | |
| DRN: | |
| CHK: | |
| DATE: | 05/22/01 |

CONTRACT 24-3881-D

600' SCALE MAP NO. 35 BLOCK NO. 5.6

TOWN CENTER
SECTION 8 AREA 4 PARCEL 'D'
WATER AND SEWER EXTENSION
5TH ELECTION DISTRICT
HOWARD COUNTY, MARYLAND

SCALE AS SHOWN

SHEET 1 OF 1

CONTRACT NO. 24-3881-D