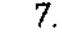
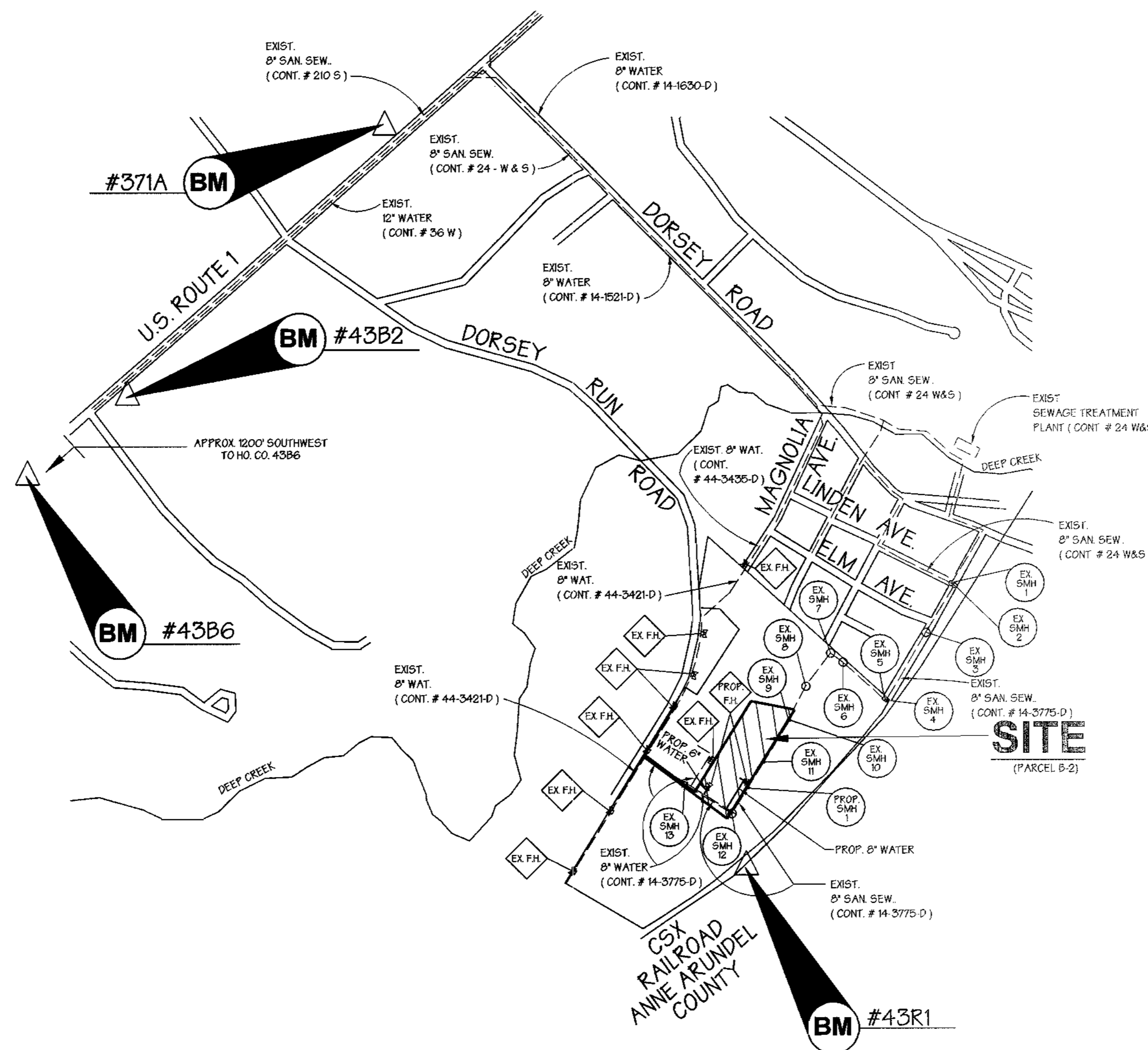


GENERAL NOTES

- Approximate location of existing mains are shown. The contractor shall take all necessary precautions to protect existing mains and services and maintain uninterrupted supply. Any damage incurred shall be repaired immediately to the satisfaction of the Engineer at the Contractor's expense.
- All horizontal controls are based on Maryland State Coordinates.
- All vertical controls are based on U.S.G.S. data.
- All pipe elevations shown are invert elevations.
- Clear all utilities by a minimum of 6". Clear all poles by 2'-0" minimum or tunnel as required. The owner has contacted the utility companies and has made arrangements for bracing of poles as shown on the drawings. In the event the contractor's work requires the bracing of additional poles, any cost incurred by the owner for bracing of additional poles or damages shall be deducted from money owed the contractor. The contractor shall coordinate with the utility companies to schedule the bracing of the poles.
- For details not shown on the drawings, and for materials and construction methods use Howard County Design Manual Volume IV, Standard Specifications and Detail for Construction (Latest Edition). The contractor shall have a copy of Volume IV on the job.
- Where test pits have been made on existing utilities, they are noted by the symbol  at the location of the test pit. A note or notes containing the results of the test pit or pits is included on the drawings. Existing utilities in the vicinity of the proposed work for which test pits have not been dug shall be located by the contractor two weeks in advance of construction operations at his own expense.
- Contractor shall notify the following utility companies or agencies at least five working days before starting work shown on these plans:

State Highway Administration	531-5533
Baltimore Gas & Electric Co. Contractor Services	850-4620
Baltimore Gas & Electric Co. Underground Damage Control	787-9068
Miss Utility	1-800-257-7777
Colonial Pipeline Co.	795-1390
Bureau of Utilities, Howard County Department of Public Works	313-4900
- Contractor shall remove trees, stumps and roots along line of excavation. Payment for such removal shall be included in the unit price bid for construction of the main.
- All fill areas within future roadway and under structures to be compacted to a minimum of 95% compaction as determined by AASHTO T-180.
- Valves adjacent to trees shall be strapped to trees.
- All water mains to be D.I.P. Class 52 unless otherwise noted.
- Tops of all water mains to have a minimum of 3 1/2' cover unless otherwise noted.
- All fittings shall be buttressed or anchored with concrete in accordance with the Standard Details unless otherwise provided for on the drawings.
- Fire hydrants shall be set to the bury line elevations shown on the drawings. All fire hydrants shall be restrained and buttressed with concrete in accordance with Standard Details. Soil around the fire hydrant shall be compacted in accordance with Section 1000 and 1005 of the Standard Specifications.
- The contractor shall notify the Bureau of Highways, Howard County, at (410) 313 2450 at least five working days before any open cut of any County road or boring/jacking operation in County roads for laying water/sewer mains or house connections. The approval of these drawings will constitute compliance with DPW requirements per Section 18.14(a) of the Howard County Code.
- The contractor shall not operate any water main valves on the existing water system.
- All water house connections shall be for inside meter setting unless otherwise noted on plans or in specifications.
- All sewer mains shall be D.I.P. or P.V.C., unless otherwise noted.
- All manholes shall be 4' 0" inside diameter unless otherwise noted.
- Manholes to be precast concrete structure.
- Manholes shown with 12" and 16" area are for brick manholes only.



LOCATION MAP

SCALE : 1" = 600'

WATER & SEWER CONSTRUCTION PLANS HOWARD BUSINESS PARK

PARCEL B-2

1st ELECTION DISTRICT HOWARD COUNTY, MARYLAND

CONTRACT NO. 14-3878-D

BENCHMARKS

NOTE: HORIZONTAL AND VERTICAL DATUMS BASED ON (NAD 83) MARYLAND STATE COORDINATE SYSTEM AS PROJECTED BY HOWARD COUNTY GEODETIC CONTROL STATIONS.

BENCHMARK #43B6
NAD 83
N 550,601.597 E 1,376,866.071
ELEVATION = 210.54'

BENCHMARK #43B2
NAD 83
N 551,654.993 E 1,378,176.951
ELEVATION = 209.59'

BENCHMARK #371A
NAD 83
N 553,315.147 E 1,379,982.153
ELEVATION = 195.75'

BENCHMARK #43R1
NAD 83
N 548,305.502 E 1,382,025.818
ELEVATION = 134.53'

QUANTITIES


ITEMS	QUANTITIES ESTIMATED	AS-BUILT		
		QUANTITIES	TYPE	MANUFACTURER/ SUPPLIER
8" D.I.P. Water Main	287 L.F.			
6" D.I.P. Water Main	44 L.F.			
Fire Hydrants	2 Each			
8"X6" TEE	1 Each			
8"X6" CROSS	1 Each			
6" Valve and Roadway Box	3 Each			
6" P.V.C. Sanitary Sewer	10 L.F.			
Type 'B' Drop Manhole (Ho. Co. Std. Dtl. G.5.14)	1 Each			
2" WHC	10 L.F.			
2" Corporation Cock Assembly	1 Each			
2" Valve and Roadway Box	1 Each			
NAME OF UTILITY CONTRACTOR :				
SURVEY AND DRAFTING DIVISION AS-BUILT DATE _____				

INDEX OF SHEETS

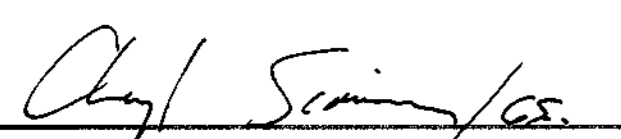
SHEET NO.	TITLES
1	COVER SHEET, GENERAL NOTES & LOCATION MAP
2	PLAN VIEW AND WATER SEWER PROFILES

BY	NO.	REVISION	DATE

SEDIMENT CONTROL MEASURES FOR THIS CONTRACT WILL BE IMPLEMENTED IN ACCORDANCE WITH SECTION 219 OF THE STANDARD SPECIFICATIONS, SDP 00-115

APPROVED:  7/19/00
HOWARD SOIL CONSERVATION DISTRICT DATE

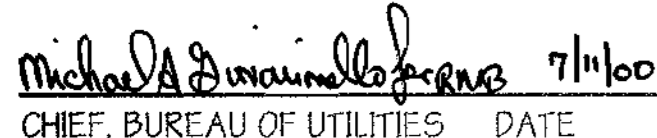
REVIEWED FOR HOWARD SOIL CONSERVATION DISTRICT AND MEETS TECHNICAL REQUIREMENTS.

 DATE


U.S. SOIL CONSERVATION SERVICE


OWNER / DEVELOPER
STONE RUN LLP
4253 MONTGOMERY ROAD
ELLCOTT CITY, MARYLAND 21043
(410) 465-6399

DEPARTMENT OF PUBLIC WORKS
HOWARD COUNTY, MARYLAND

 7/19/00
CHIEF, BUREAU OF UTILITIES DATE

DEPARTMENT OF PLANNING & ZONING
HOWARD COUNTY, MARYLAND

 7/19/00
CHIEF, DEVELOPMENT ENGINEERING DIVISION DATE

 **GEORGE W. STEPHENS, JR. AND ASSOCIATES, INC.**
Civil Engineers and Land Surveyors
1020 Cromwell Bridge Road
Towson Maryland 21286
(410) 825-8120



DESIGNED : PRC, KE
DRAFTED : KE
CHECKED : PRC

**COVER SHEET,
GENERAL NOTES & LOCATION MAP**

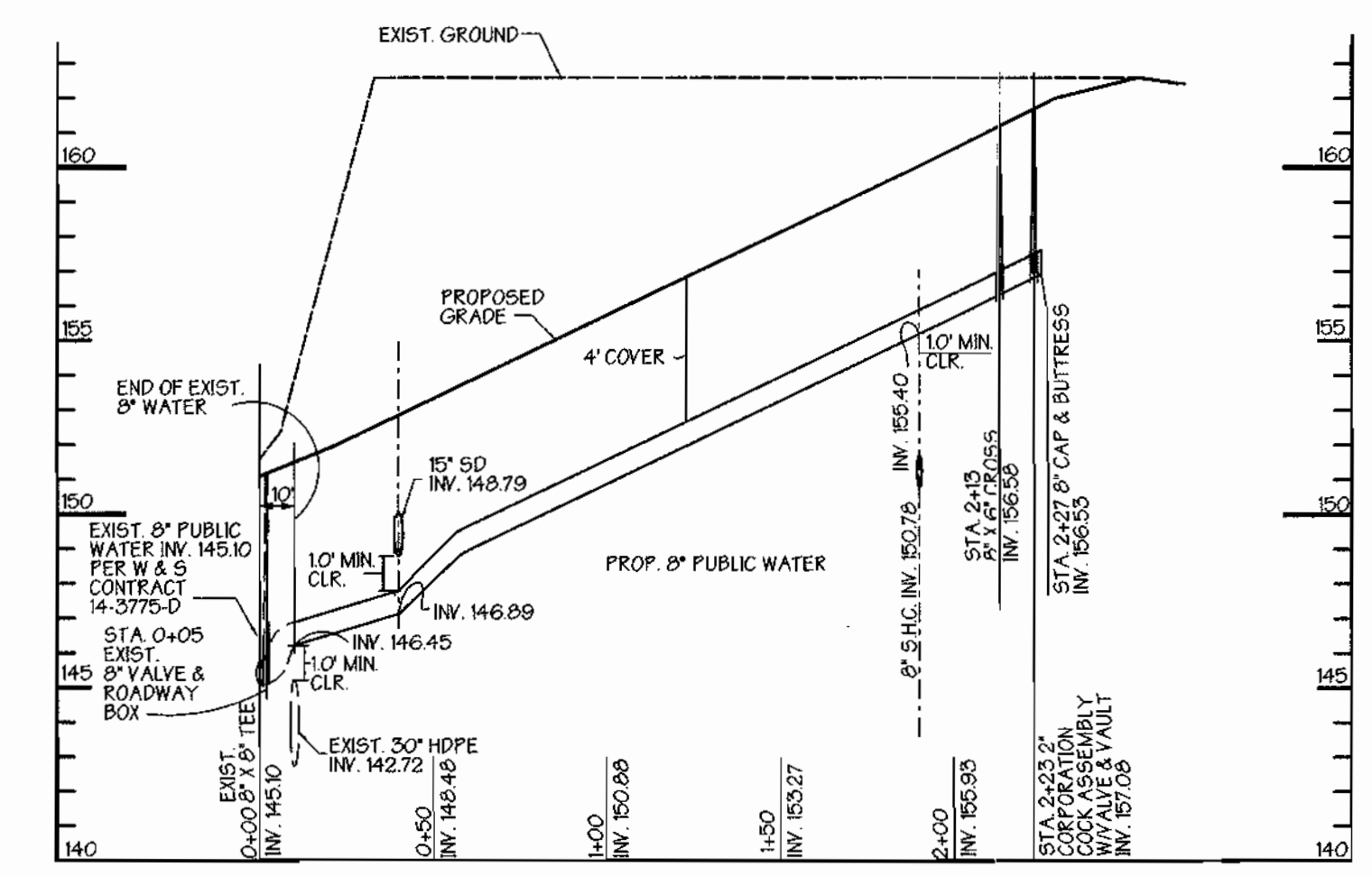
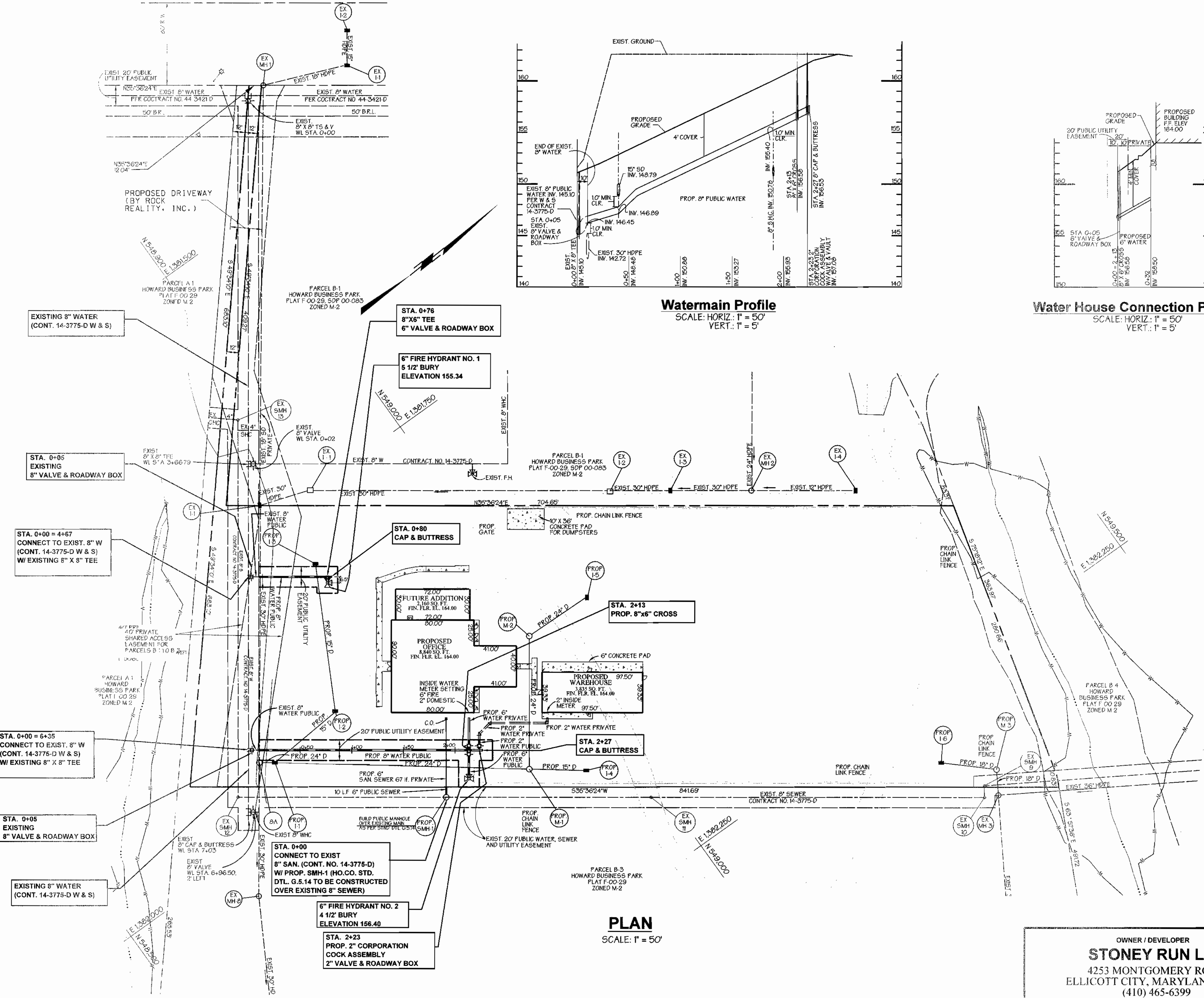
CONTRACT NO. 14-3878-D
600 SCALE MAP NO. 43

**PUBLIC WATER & SEWER MAIN
HOWARD BUSINESS PARK
PARCEL B-2**

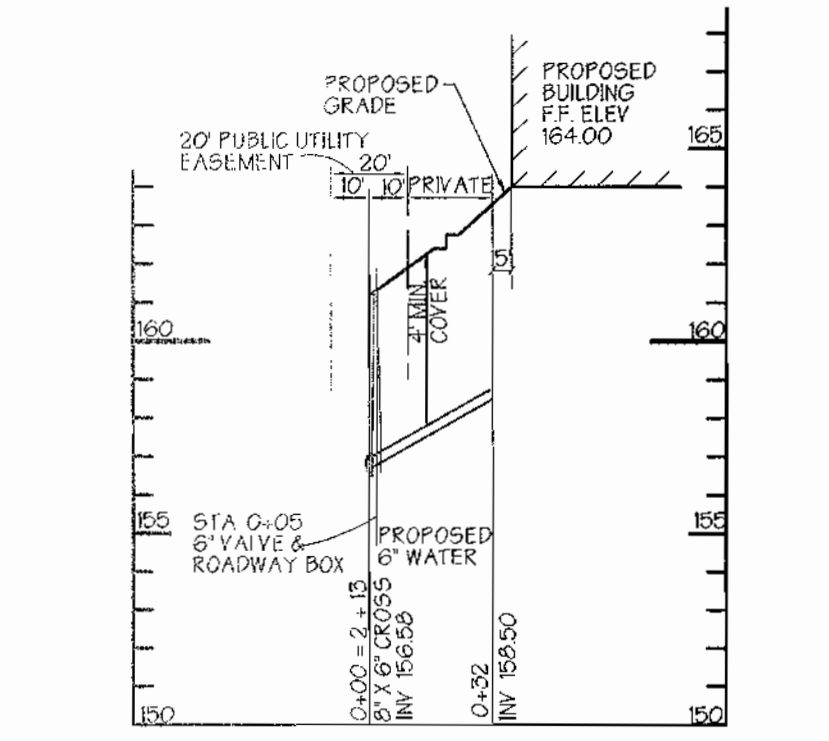
CONTRACT NO. 14-3878-D
HOWARD COUNTY, MARYLAND
ELECTION DISTRICT #01

APRIL 27, 2000
SHEET 1 OF 2

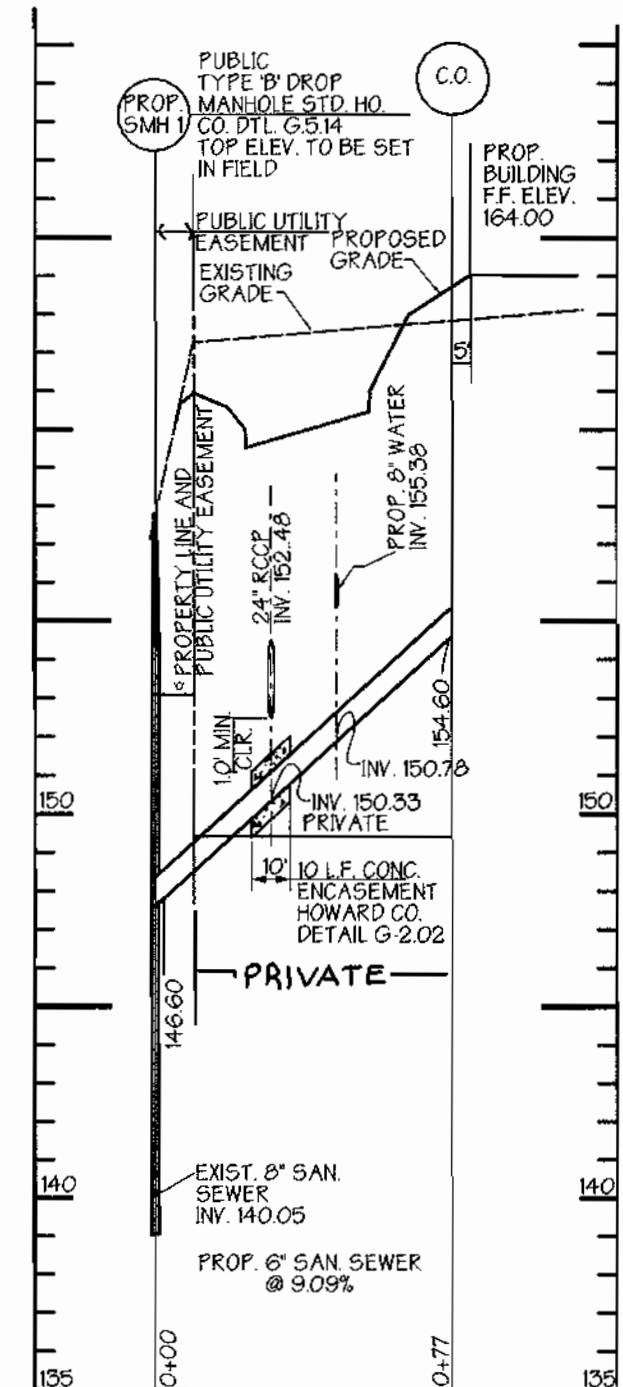
DORSEY RUN ROAD
 MAJOR COLLECTOR 80' ROW PUBLIC ROAD
 BALTIMORE WASHINGTON AUTO EXCHANGE, INC.
 PLATBOOK NO. 10215 & 10216
 ZONED M 2



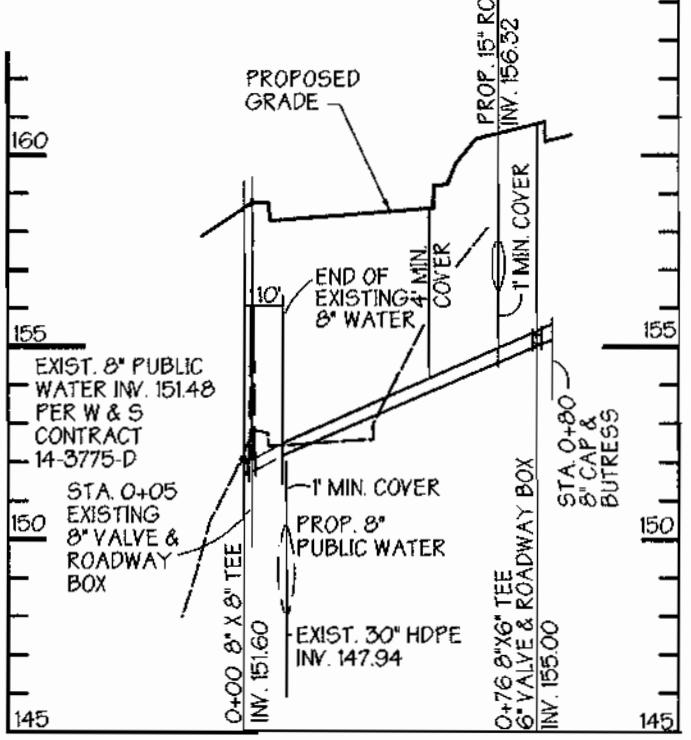
Watermain Profile
 SCALE: HORIZ.: 1" = 50'
 VERT.: 1" = 5'



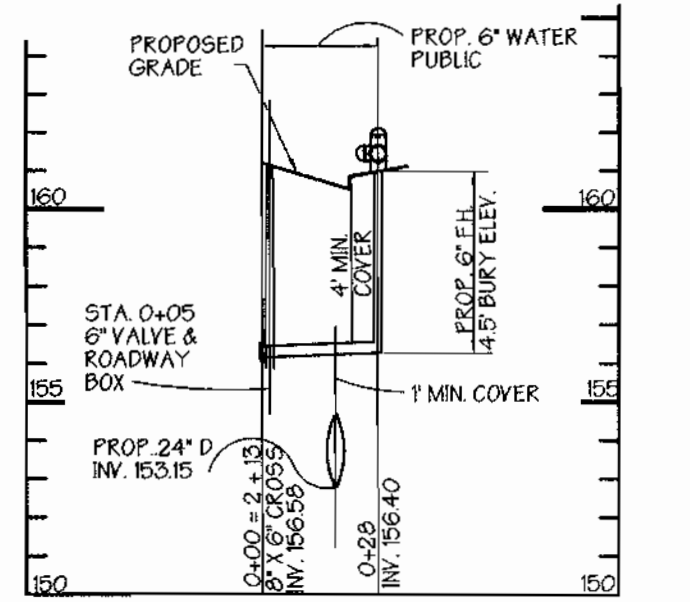
Water House Connection Profile
 SCALE: HORIZ.: 1" = 50'
 VERT.: 1" = 5'



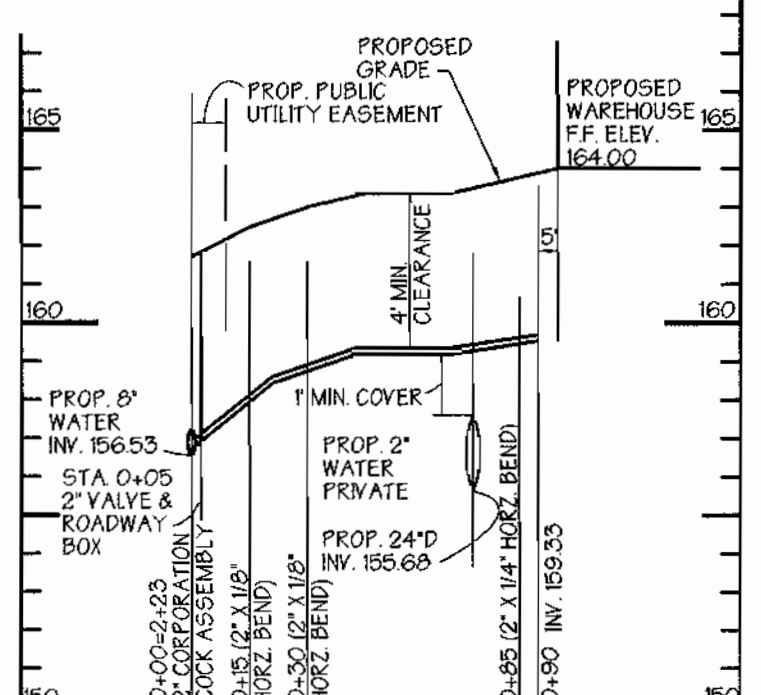
Sanitary Sewer House Connection Profile
 SCALE: HORIZ.: 1" = 50'
 VERT.: 1" = 5'



Public 6" Fire Hydrant No. 1
 SCALE: HORIZ.: 1" = 50'
 VERT.: 1" = 5'



Public 6" Fire Hydrant No. 2
 SCALE: HORIZ.: 1" = 50'
 VERT.: 1" = 5'



Water House Connection Profile
 SCALE: HORIZ.: 1" = 50'
 VERT.: 1" = 5'

OWNER / DEVELOPER
STONEY RUN LLP
 4253 MONTGOMERY ROAD
 ELLICOTT CITY, MARYLAND 211043
 (410) 463-6399

BY	NO.	REVISION	DATE

DEPARTMENT OF PUBLIC WORKS
 HOWARD COUNTY, MARYLAND
 Michael A. Swannick
 CHIEF, BUREAU OF UTILITIES
 DATE: 7/1/00

DEPARTMENT OF PLANNING & ZONING
 HOWARD COUNTY, MARYLAND
 [Signature]
 CHIEF, DEVELOPMENT
 ENGINEERING DIVISION
 DATE: 7/1/00

GWS
GEORGE W. STEPHENS, JR.
AND ASSOCIATES, INC.
 Civil Engineers and Land Surveyors
 1020 Cromwell Bridge Road
 Towson Maryland 21286
 (410) 825-8120

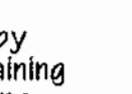


DESIGNED: PRC, KE
 DRAFTED: KE
 CHECKED: PRC

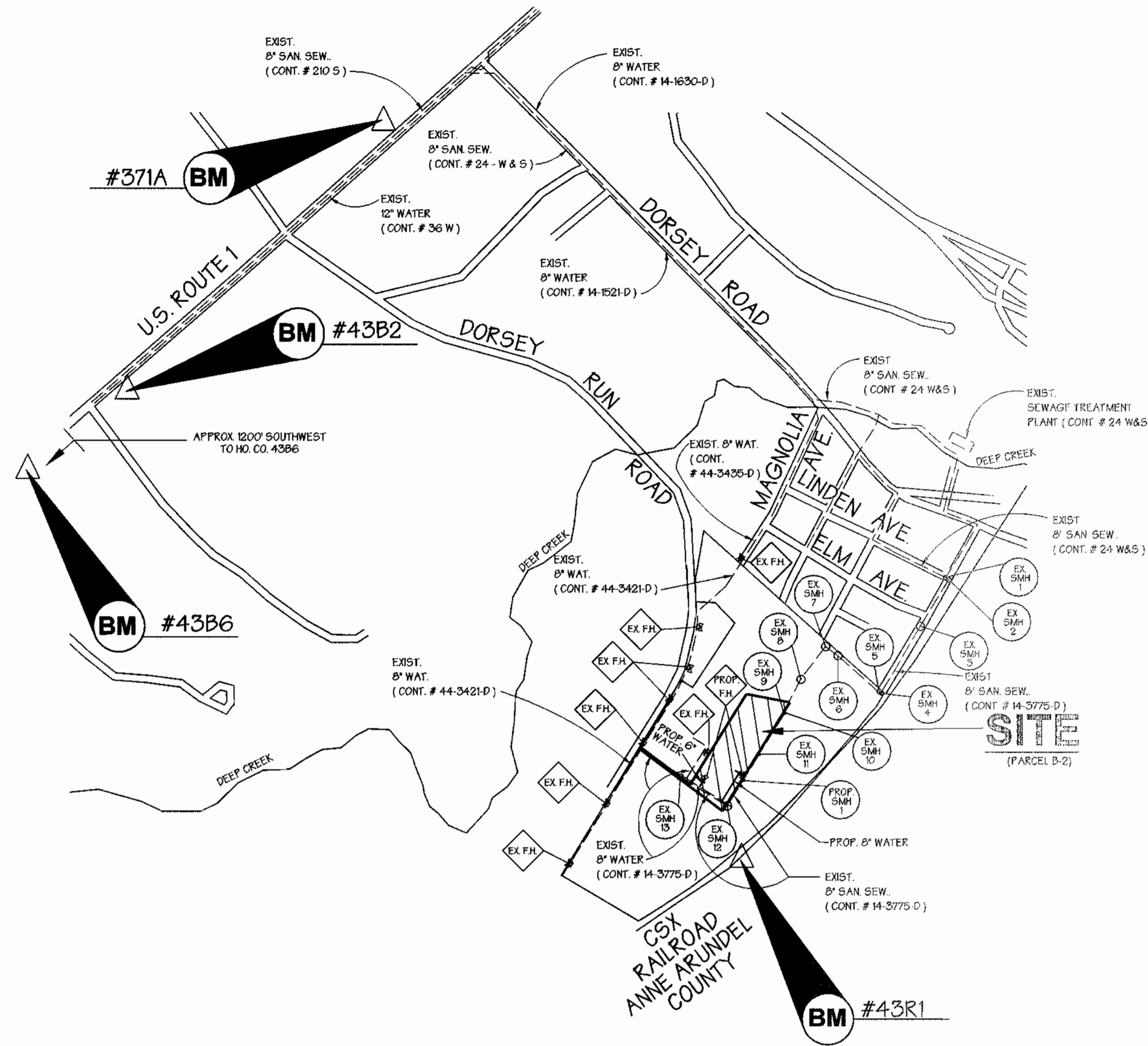
PLAN & PROFILES
 CONTRACT NO. 14-3878-D
 600 SCALE MAP NO. 43
 BLOCK NO. 6

PUBLIC WATER & SEWER MAIN
HOWARD BUSINESS PARK
PARCEL B-2
 CONTRACT NO. 14-3878-D
 HOWARD COUNTY, MARYLAND
 ELECTION DISTRICT #01
 APRIL 27, 2000
 SHEET 2 OF 2
 P/N 9408 - FILE NAME 9408waterplan1.s01

GENERAL NOTES

- Approximate location of existing mains are shown. The contractor shall take all necessary precautions to protect existing mains and services and maintain uninterrupted supply. Any damage incurred shall be repaired immediately to the satisfaction of the Engineer at the Contractor's expense.
- All horizontal controls are based on Maryland State Coordinates.
- All vertical controls are based on U.S.G.S. data.
- All pipe elevations shown are invert elevations.
- Clear all utilities by a minimum of 6". Clear all poles by 2'-0" minimum or tunnel as required. The owner has contacted the utility companies and has made arrangements for bracing of poles as shown on the drawings. In the event the contractor's work requires the bracing of additional poles, any cost incurred by the owner for bracing of additional poles or damages shall be deducted from money owed the contractor. The contractor shall coordinate with the utility companies to schedule the bracing of the poles.
- For details not shown on the drawings, and for materials and construction methods use Howard County Design Manual, Volume IV, Standard Specifications and Detail for Construct on (Latest Edition). The contractor shall have a copy of Volume IV on the job.
- Where test pits have been made on existing utilities, they are noted by the symbol  at the location of the test pit. A note or notes containing the results of the test pit or pits is included on the drawings. Existing utilities in the vicinity of the proposed work for which test pits have not been dug shall be located by the contractor two weeks in advance of construction operations at his own expense.
- Contractor shall notify the following utility companies or agencies at least five working days before starting work shown on these plans:

State Highway Administration	531-5533
Baltimore Gas & Electric Co. Contractor Services	850-4620
Baltimore Gas & Electric Co. Underground Damage Control	787-9068
Miss Utility	1-800-257-7777
Colonial Pipeline Co.	795-1390
Bureau of Utilities, Howard County Department of Public Works	313-4900
- Contractor shall remove trees, stumps and roots along line of excavation. Payments for such removal shall be included in the unit price bid for construction of the main.
- All fill areas within future roadway and under structures to be compacted to a minimum of 95% compaction as determined by AASHTO T-100.
- Valves adjacent to tees shall be strapped to tees.
- All water mains to be D.I.P. Class 52 unless otherwise noted.
- Tops of all water mains to have a minimum of 3 1/2' cover unless otherwise noted.
- All fittings shall be buttressed or anchored with concrete in accordance with the Standard Details unless otherwise provided for on the drawings.
- Fire hydrants shall be set to the bury line elevations shown on the drawings. All fire hydrants shall be restrained and buttressed with concrete in accordance with Standard Details. Soil around the fire hydrant shall be compacted in accordance with Section 1000 and 1005 of the Standard Specifications.
- The contractor shall notify the Bureau of Highways, Howard County, at (410) 313 2450 at least five working days before any open cut of any County road or boring/jacking operation in County roads for laying water/sewer mains or house connections. The approval of these drawings will constitute compliance with DFW requirements per Section 10.114(a) of the Howard County Code.
- The contractor shall not operate any water main valves on the existing water system.
- All water house connections shall be for inside meter setting unless otherwise noted on plans or in specifications.
- All sewer mains shall be D.I.P. or P.V.C., unless otherwise noted.
- All manholes shall be 4'-0" inside diameter unless otherwise noted.
- Manholes to be precast concrete structure.
- Manholes shown with 12" and 16" area are for brick manholes only.



LOCATION MAP

SCALE: 1" = 600'

TYPE OF BLDG:	OFFICE/WARHOUSE
NO. OF LOTS:	1
NO. OF WATER L.C.:	2
NO. OF SEWER L.C.:	1
DRAINAGE AREA:	PATAPSCO
WATER CODE:	801
SEWER CODE:	2250000
TEST GRADIENT ELEV.:	560
TREATMENT PLANT:	PATAPSCO HOWARD COUNTY, MARYLAND

WATER & SEWER CONSTRUCTION PLANS HOWARD BUSINESS PARK

PARCEL B-2

1st ELECTION DISTRICT HOWARD COUNTY, MARYLAND

CONTRACT NO. 14-3878-D

BENCHMARKS

NOTE: HORIZONTAL AND VERTICAL DATUMS BASED ON (NAD 83) MARYLAND STATE COORDINATE SYSTEM AS PROJECTED BY HOWARD COUNTY GEODETIC CONTROL STATIONS.

BENCHMARK #43B6
NAD 83
N 550,601.597 E 1,376,866.071
ELEVATION = 210.54'

BENCHMARK #43B2
NAD 83
N 551,654.993 E 1,378,176.951
ELEVATION = 209.59'

BENCHMARK #371A
NAD 83
N 553,315.147 E 1,379,982.153
ELEVATION = 195.75'

BENCHMARK #43R1
NAD 83
N 548,305.502 E 1,382,025.818
ELEVATION = 134.53'

QUANTITIES

ITEMS	QUANTITIES ESTIMATED	AS-BUILT		
		QUANTITIES	TYPE	MANUFACTURER/ SUPPLIER
8" D.I.P. Water Main	287 L.F.			
6" D.I.P. Water Main	44 L.F.			
Fire Hydrants	2 Each			
8"X6" TEE	1 Each			
8"X6" CROSS	1 Each			
6" Valve and Roadway Box	3 Each			
6" P.V.C. Sanitary Sewer	10 L.F.			
Type 'B' Drop Manhole (Ho. Co. Std. Det. G.5.14)	1 Each			
1" WHC	10 L.F.			
4" CAST IRON VALVE BOX	1 Each			
NAME OF UTILITY CONTRACTOR :				
SURVEY AND DRAFTING DIVISION AS-BUILT DATE _____				

INDEX OF SHEETS

SHEET NO.	TITLES
1	COVER SHEET, GENERAL NOTES & LOCATION MAP
2	PLAN VIEW AND WATER SEWER PROFILES

BY	NO.	REVISION	DATE
GWS	Δ	REVISED QUANTITY TABLE, REVISED 2" WATER LINE TO A 1" WATER LINE	AUGUST 24, 2000

SEDIMENT CONTROL MEASURES FOR THIS CONTRACT WILL BE IMPLEMENTED IN ACCORDANCE WITH SECTION 219 OF THE STANDARD SPECIFICATIONS, SDP 00-115

THE DEVELOPMENT PLAN IS APPROVED FOR SOIL EROSION AND SEDIMENT CONTROL BY THE HOWARD SOIL CONSERVATION DISTRICT.

APPROVED:  7/17/00
HOWARD SOIL CONSERVATION DISTRICT DATE

REVIEWED FOR HOWARD SOIL CONSERVATION DISTRICT AND MEETS TECHNICAL REQUIREMENTS

 7/17/00
U.S. SOIL CONSERVATION SERVICE DATE

OWNER / DEVELOPER
STONEY RUN LLP
4253 MONTGOMERY ROAD
ELLICOTT CITY, MARYLAND 21043
(410) 465-6399

DEPARTMENT OF PUBLIC WORKS
HOWARD COUNTY, MARYLAND

DEPARTMENT OF PLANNING & ZONING
HOWARD COUNTY, MARYLAND



**GEORGE W. STEPHENS, JR.
AND ASSOCIATES, INC.**

Civil Engineers and Land Surveyors

1020 Cromwell Bridge Road
Towson Maryland 21286
(410) 825-8120



DESIGNED: PRC, KE
DRAFTED: KE
CHECKED: PRC

COVER SHEET, GENERAL NOTES & LOCATION MAP

CONTRACT NO. 14-3878-D

600 SCALE MAP NO. 43

BLOCK NO. 6

PUBLIC WATER & SEWER MAIN HOWARD BUSINESS PARK PARCEL B-2

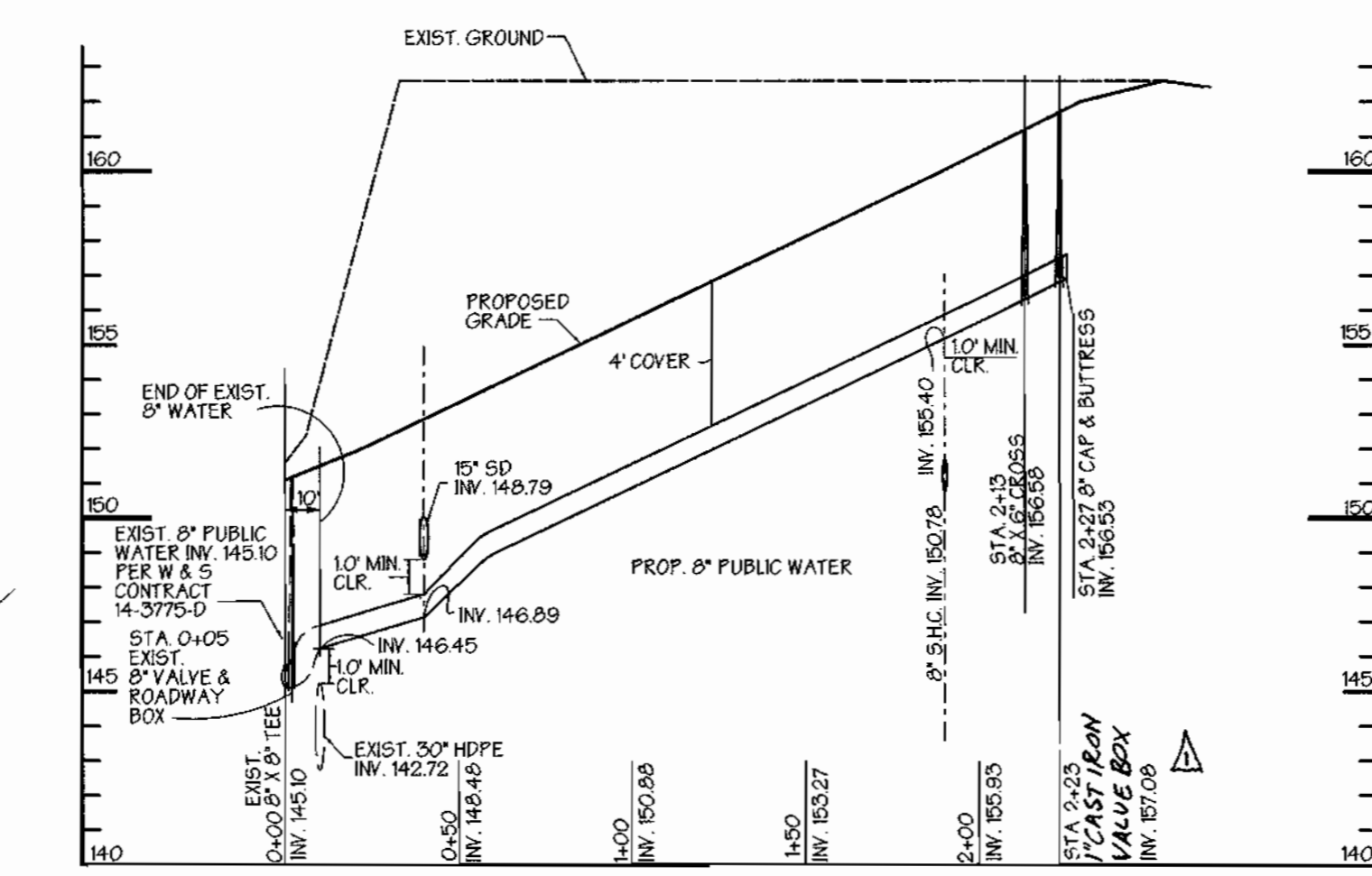
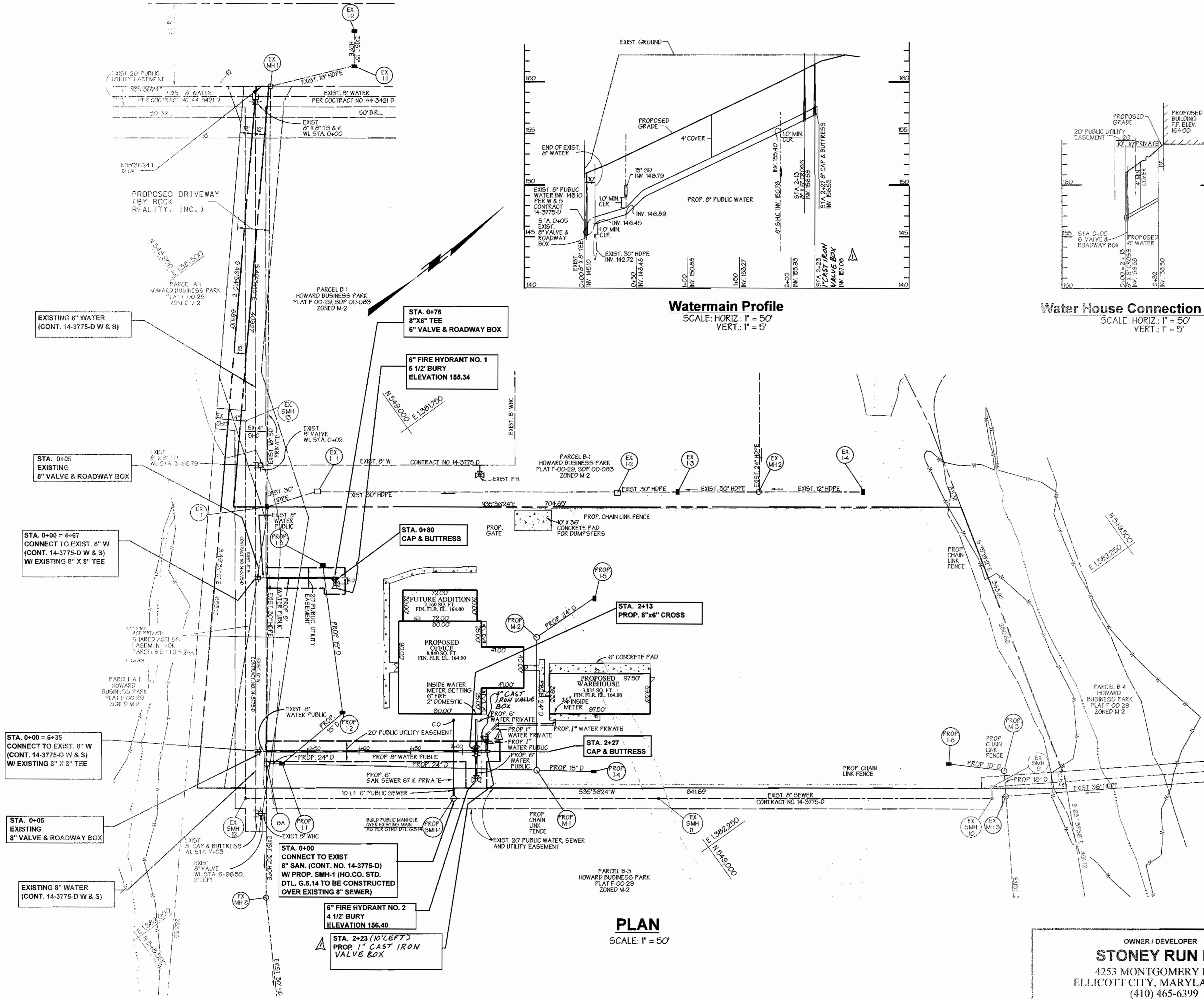
CONTRACT NO. 14-3878-D

HOWARD COUNTY, MARYLAND
ELECTION DISTRICT #01

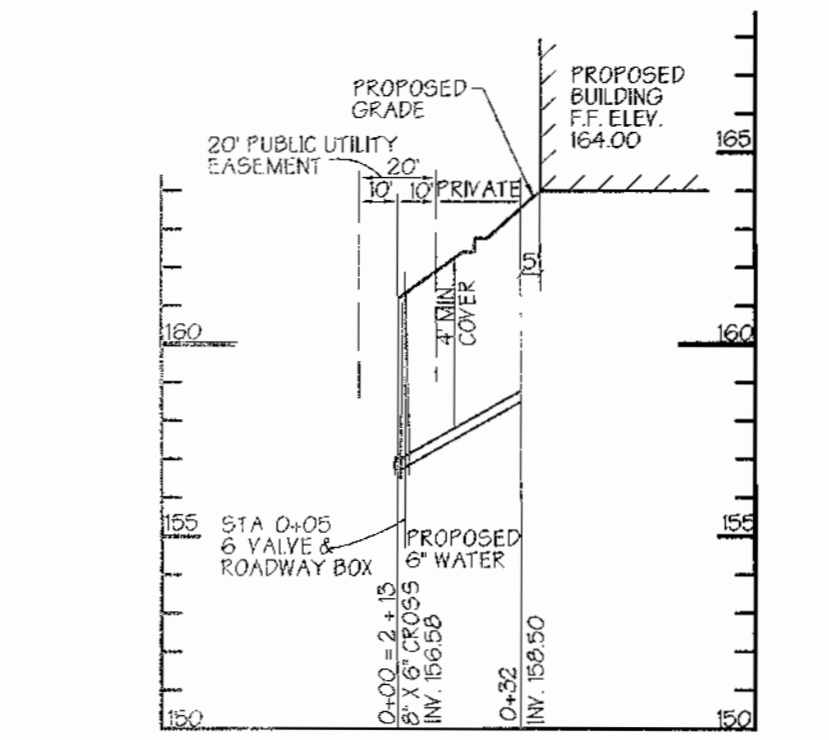
APRIL 27, 2000
SHEET 1 OF 2

PN 9408 - FILE NAME 9408waterplans01

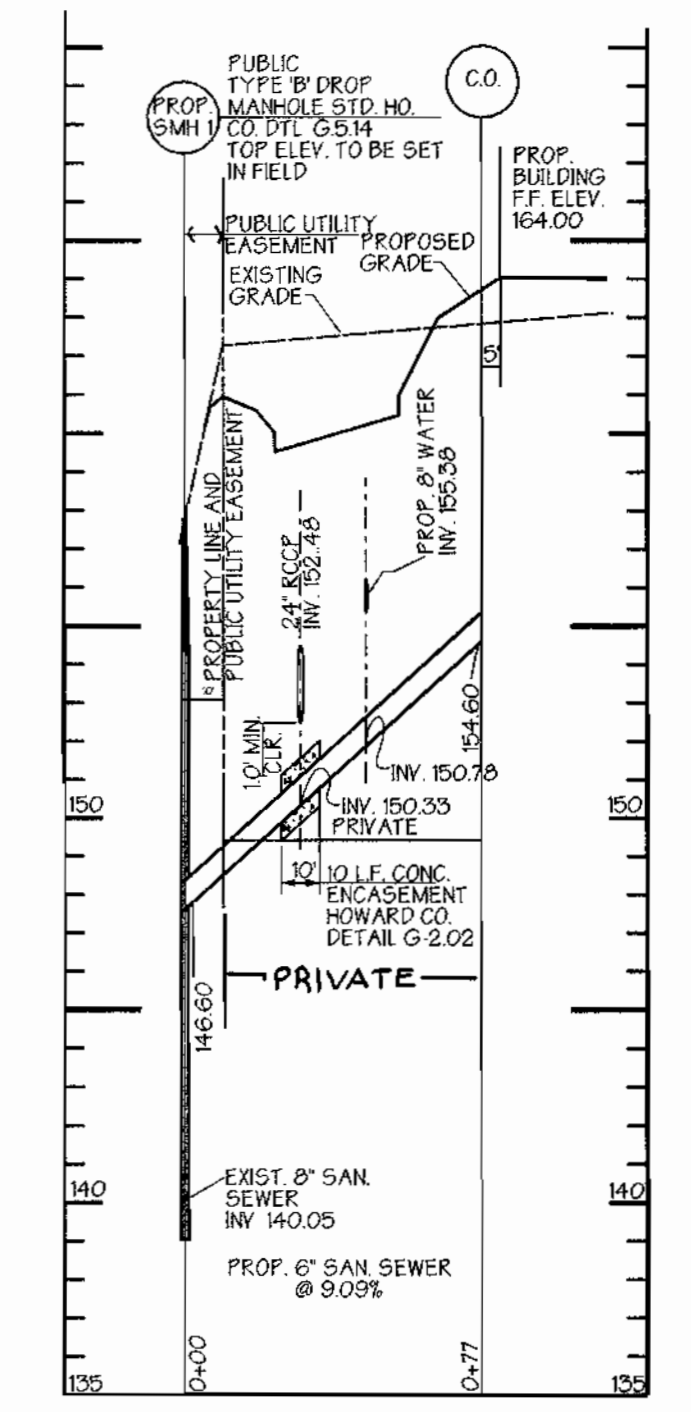
DORSEY RUN ROAD
 MAJOR COLLECTOR 80' ROW PUBLIC ROAD
 BALTIMORE WASHINGTON AUTO EXCHANGE, INC.
 PLATBOOK NO. 10215 & 10216
 ZONED M-2



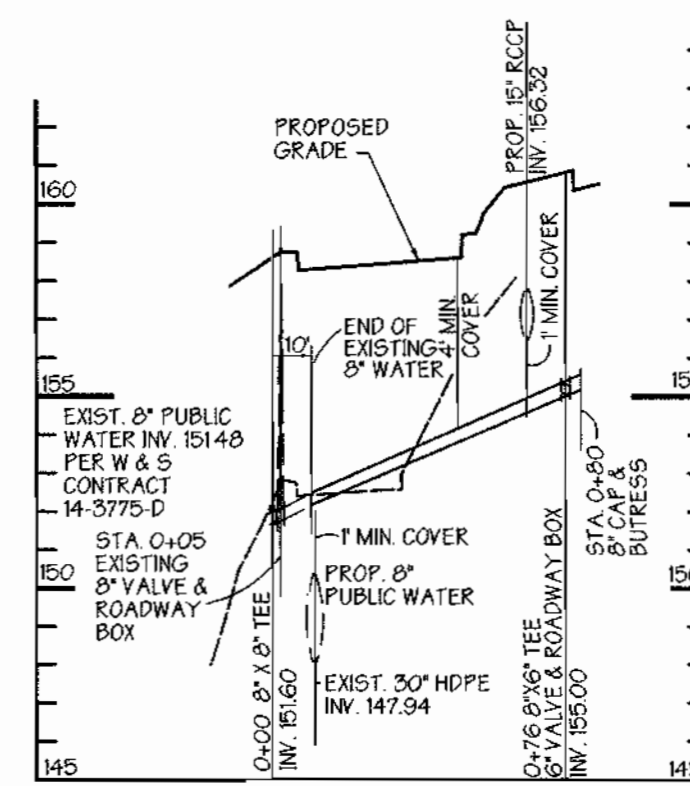
Watermain Profile
 SCALE: HORIZ.: 1" = 50'
 VERT.: 1" = 5'



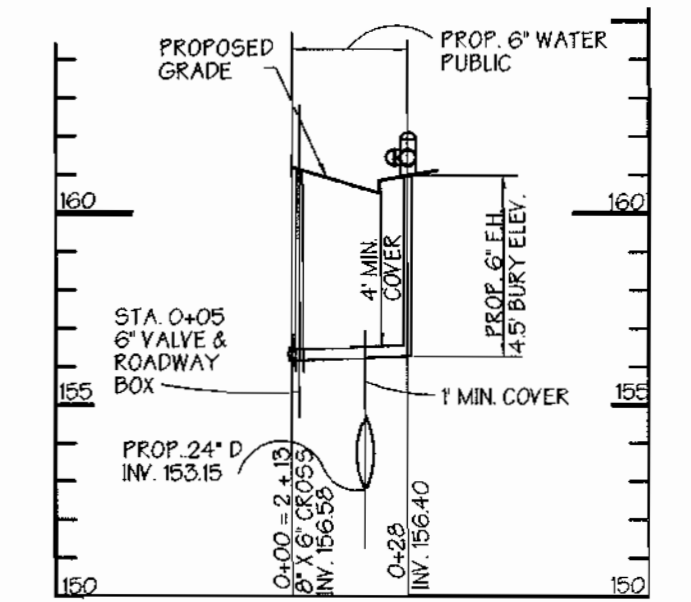
Water House Connection Profile
 SCALE: HORIZ.: 1" = 50'
 VERT.: 1" = 5'



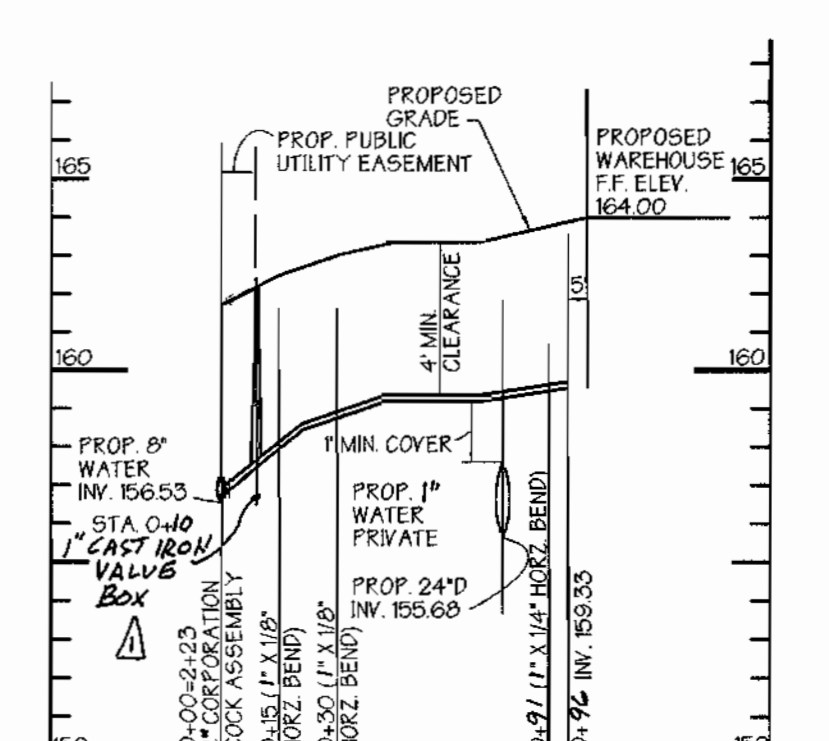
Sanitary Sewer House Connection Profile
 SCALE: HORIZ.: 1" = 50'
 VERT.: 1" = 5'



Public 6" Fire Hydrant No. 1
 SCALE: HORIZ.: 1" = 50'
 VERT.: 1" = 5'



Public 6" Fire Hydrant No. 2
 SCALE: HORIZ.: 1" = 50'
 VERT.: 1" = 5'



Water House Connection Profile
 SCALE: HORIZ.: 1" = 50'
 VERT.: 1" = 5'

PLAN
 SCALE: 1" = 50'

OWNER / DEVELOPER
STONEY RUN LLP
 4253 MONTGOMERY ROAD
 ELLICOTT CITY, MARYLAND 21043
 (410) 465-6399

BY	NO.	REVISION	DATE
GWS	Δ	REVISED 2" WATER LINE TO A 1" WATER LINE, REVISED PROFILES ACCORDINGLY AND REVISED 2" INSIDE METER FOR PROPOSED WAREHOUSE TO A 3/4" INSIDE METER	AUGUST 24, 2000

DEPARTMENT OF PUBLIC WORKS
 HOWARD COUNTY, MARYLAND
 Michael A. Szwarczewski
 CHIEF, BUREAU OF UTILITIES DATE: 7/17/00

DEPARTMENT OF PLANNING & ZONING
 HOWARD COUNTY, MARYLAND
 [Signature]
 CHIEF, DEVELOPMENT ENGINEERING DIVISION DATE: 7/17/00

GEORGE W. STEPHENS, JR. AND ASSOCIATES, INC.
 Civil Engineers and Land Surveyors
 1020 Cromwell Bridge Road
 Towson Maryland 21286
 (410) 825-8120



DESIGNED: PRC, KE
 DRAFTED: KE
 CHECKED: PRC

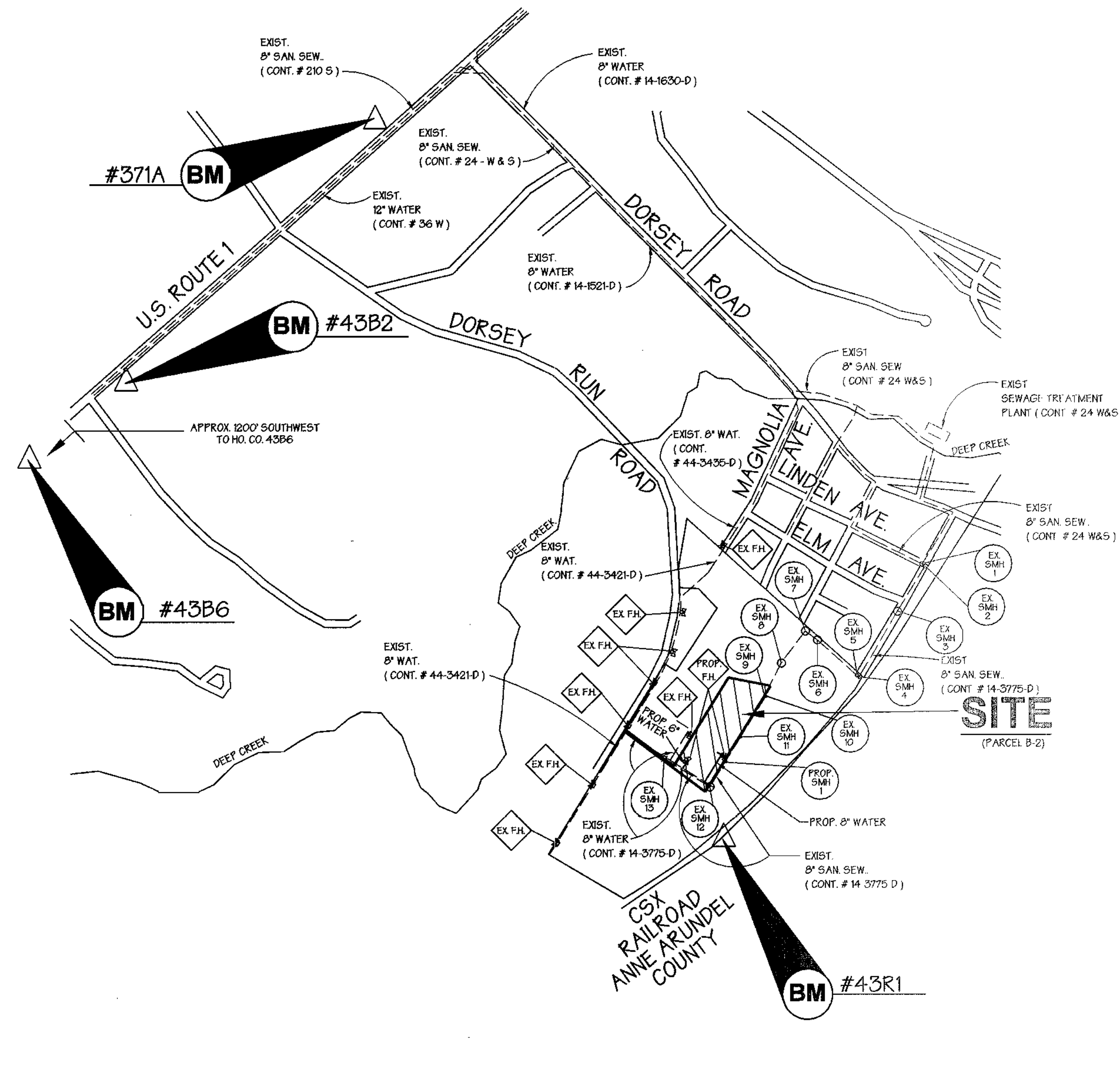
PLAN & PROFILES
 CONTRACT NO. 14-3878-D
 600 SCALE MAP NO. 43
 BLOCK NO. 6

PUBLIC WATER & SEWER MAIN
HOWARD BUSINESS PARK
PARCEL B-2
 CONTRACT NO. 14-3878-D
 HOWARD COUNTY, MARYLAND
 ELECTION DISTRICT #01
 APRIL 27, 2000
 SHEET 2 OF 2
 P/N 9408-FILE NAME 9408waterplan101

GENERAL NOTES

- Approximate location of existing mains are shown. The contractor shall take all necessary precautions to protect existing mains and services and maintain uninterrupted supply. Any damage incurred shall be repaired immediately to the satisfaction of the Engineer at the Contractor's expense.
- All horizontal controls are based on Maryland State Coordinates.
- All vertical controls are based on U.S.G.S. data.
- All pipe elevations shown are a zero elevation.
- Clear all utilities by a minimum of 6". Clear all poles by 2'-0" minimum or tunnel as required. The owner has contacted the utility companies and has made arrangements for bracing of poles as shown on the drawings. In the event the contractor is required to brace additional poles, any costs incurred by the owner for bracing of additional poles or damages shall be deducted from monies owed the contractor. The contractor shall coordinate with the utility companies to schedule the bracing of the poles.
- For details not shown on the drawings, and for materials and construction methods use Howard County Design Manual Volume IV, Standard Specifications and Detail for Construction (as applicable). The contractor shall have a copy of Volume IV on the job.
- Where test pits have been made on existing utilities, they are noted by the symbol at the location of the test pit. A note or notes containing the results of the test pit or tests is included on the drawings. Existing utilities in the vicinity of the proposed work for which test pits have not been dug shall be located by the contractor two weeks in advance of construction operations at his own expense.
- Contractor shall notify the following utility companies or agencies at least five working days before starting work shown on these plans:

State Highway Administration	531-5533
Baltimore Gas & Light Co. Consultant Services	850-4520
Baltimore Gas & Light Co. Underground Damage Control	787-9068
Miss Utility	1-800-257-7777
Colonial Pipeline Co.	795-1390
Bureau of Utilities, Howard County Department of Public Works	313-4900
- Contractor shall remove lines, stumps and roots along line of excavation. Payment for stump removal shall be included in the unit price bid for construction of the main.
- All fill areas within future roadway and under structures to be compacted to a minimum of 95% compaction as determined by AASHTO T-180.
- Valves adjacent to tees shall be stepped to tees.
- All water mains to be D. P. Class B2 unless otherwise noted.
- Tops of all water mains to have a minimum of 3 1/2' cover unless otherwise noted.
- All fittings shall be bolted or anchored with concrete in accordance with the Standard Details unless otherwise provided for on the drawings.
- Fire hydrants shall be set to the utility line elevations shown on the drawings. All fire hydrants shall be restrained and buttressed with concrete in accordance with Standard Details. Soil around the fire hydrant shall be compacted in accordance with Section 1000 and 1005 of the Standard Specifications.
- The contractor shall notify the Bureau of Highways, Howard County, at (410) 313-2450 at least five working days before any open cut of any County road or boring/jacking operation in County roads for laying water/sewer mains or house connections. The approval of these drawings will constitute compliance with 17CM requirements per Section 18.14(a) of the Howard County Code.
- The contractor shall not operate any water main valves on the existing water system.
- All water house connections shall be for inside meter setting unless otherwise noted on plans or in specifications.
- All sewer mains shall be D.P. or P.V.C. unless otherwise noted.
- All manholes shall be 4'-0" inside diameter unless otherwise noted.
- Manholes to be precast concrete structure.
- Manholes shown with 12" and 16" diam are for brick manholes only.



LOCATION MAP

SCALE: 1" = 600'

WATER & SEWER CONSTRUCTION PLANS HOWARD BUSINESS PARK

PARCEL B-2

1st ELECTION DISTRICT HOWARD COUNTY, MARYLAND

CONTRACT NO. 14-3878-D

TYPE OF BLDG :	OFFICE/WARHOUSE
NO. OF LOTS :	1
NO. OF WATER H.C. :	2
NO. OF SEWER H.C. :	1
DRAINAGE AREA :	FATAP'SCO
WATER CODE :	BO1
SEWER CODE :	2250000
TEST GRADIENT ELEV. :	550
TREATMENT PLANT :	FATAP'SCO
	HOWARD COUNTY, MARYLAND

QUANTITIES

ITEMS	QUANTITIES ESTIMATED	AS-BUILT		
		QUANTITIES	TYPE	MANUFACTURER/SUPPLIER
8" D.I.P. Water Main	287 L.F.	293.6 L.F.	D.I.P.	ATLANTIC STATES
6" D.I.P. Water Main	44 L.F.	44.6 L.F.	D.I.P.	ATLANTIC STATES
Fire Hydrants	2 Each	2 EA.		MUELLER
8"X6" TEE	1 Each	3 EA.		U.S. PIPE & FOUNDRY
8"X6" CROSS	1 Each	-		
6" Valve and Roadway Box	3 Each	3 EA.	COMPACT DUCTILE	CAPITAL FOUNDRY
6" P.V.C. Sanitary Sewer	10 L.F.	10 L.F.		J.M. MANUFACTURING
Type 'B' Drop Manhole (Ho. Co. Std. Dtl. G.5.14)	1 Each	1 EA.		ATLANTIC CONCRETE PRODUCTS
1" WHC	10 L.F.	10 L.F.	SOFT COPPER	CAMBRIDGE LEE
4" CAST IRON VALVE BOX	1 Each			
8"X8" STAINLESS STEEL TAPPING SLEEVE & VALVE		2		MUELLER

NAME OF UTILITY CONTRACTOR: IACABONI SITE SPECIALISTS INC.
SURVEY AND DRAFTING DIVISION AS-BUILT DATE: _____

BENCHMARKS

NOTE: HORIZONTAL AND VERTICAL DATUMS BASED ON (NAD 83) MARYLAND STATE COORDINATE SYSTEM AS PROJECTED BY HOWARD COUNTY GEODETIC CONTROL STATIONS.

- BENCHMARK #43B6**
NAD 83
N 550,601.597 E 1,376,866.071
ELEVATION = 210.54'
- BENCHMARK #43B2**
NAD 83
N 551,654.993 E 1,378,176.951
ELEVATION = 209.59'
- BENCHMARK #371A**
NAD 83
N 553,315.147 E 1,379,982.153
ELEVATION = 195.75'
- BENCHMARK #43R1**
NAD 83
N 548,305.502 E 1,382,025.818
ELEVATION = 134.53'

INDEX OF SHEETS

SHEET NO.	TITLES
1	COVER SHEET, GENERAL NOTES & LOCATION MAP
2	PLAN VIEW AND WATER SEWER PROFILES

BY	NO.	REVISION	DATE
GWS	1	REVISED QUANTITY TABLE, REVISED 2" WATER LINE TO A 1" WATER LINE	AUGUST 24, 2000
JMT	2	AS-BUILT	JAN. 23, 2001

SEDIMENT CONTROL MEASURES FOR THIS CONTRACT WILL BE IMPLEMENTED IN ACCORDANCE WITH SECTION 03 OF THE STANDARD SPECIFICATIONS, 507 OF 03.115

APPROVED: 7/17/00
HOWARD SOIL CONSERVATION DISTRICT DATE

REVIEWED FOR HOWARD SOIL CONSERVATION DISTRICT AND MEETS TECHNICAL REQUIREMENTS

7/17/00
U.S. SOIL CONSERVATION SERVICE DATE

OWNER / DEVELOPER
STONEY RUN LLP
4253 MONTGOMERY ROAD
ELLCOTT CITY, MARYLAND 21043
(410) 465-6399

DEPARTMENT OF PUBLIC WORKS
HOWARD COUNTY, MARYLAND

7/17/00
CHIEF, BUREAU OF UTILITIES DATE

DEPARTMENT OF PLANNING & ZONING
HOWARD COUNTY, MARYLAND

7/17/00
CHIEF, DEVELOPMENT ENGINEERING DIVISION DATE

GWS

GEORGE W. STEPHENS, JR. AND ASSOCIATES, INC.
Civil Engineers and Land Surveyors
1020 Cromwell Bridge Road
Towson Maryland 21286
(410) 825-8120



DESIGNED: PRC, KE
DRAFTED: KE
CHECKED: PRC

**COVER SHEET,
GENERAL NOTES & LOCATION MAP**

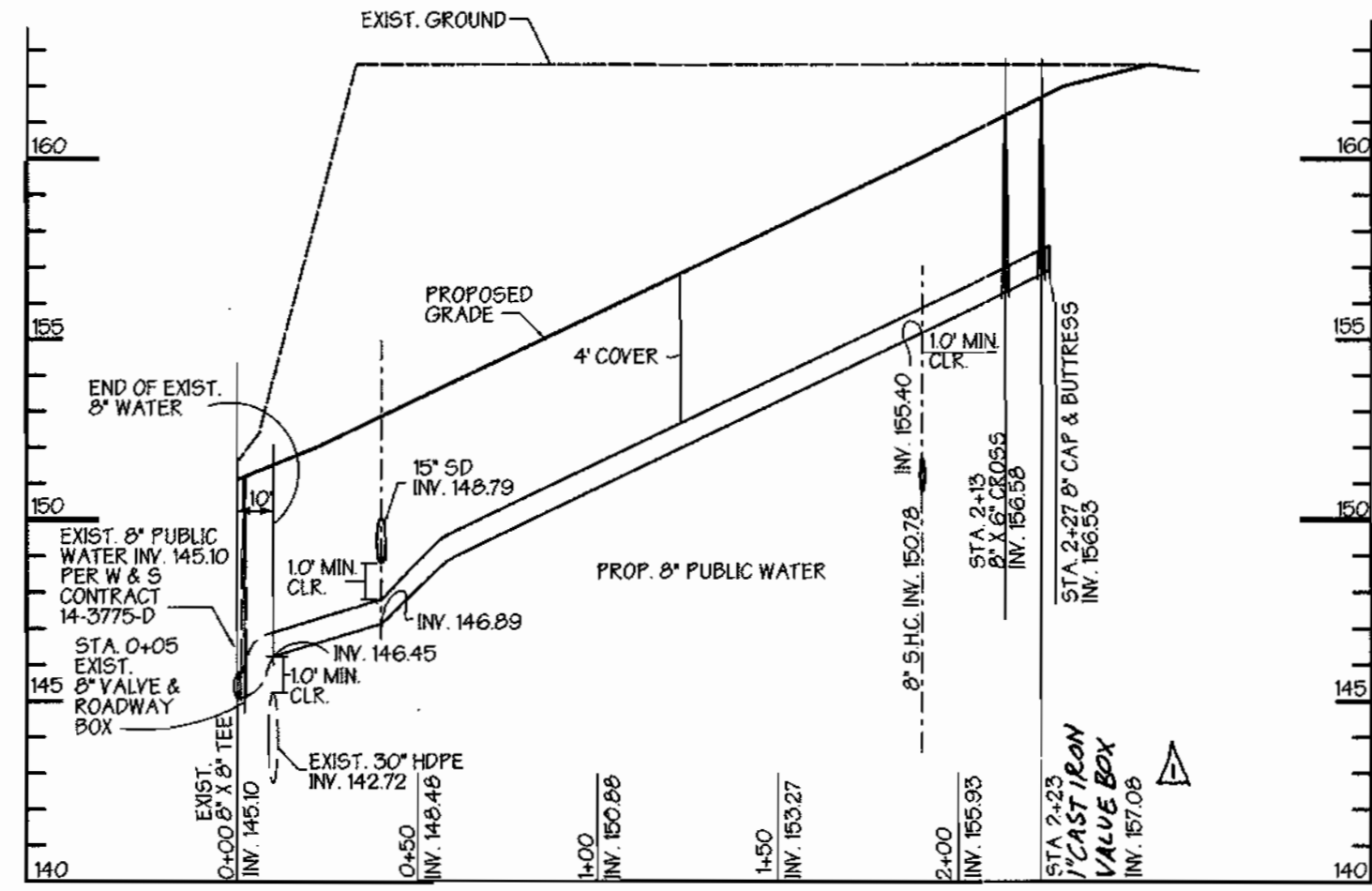
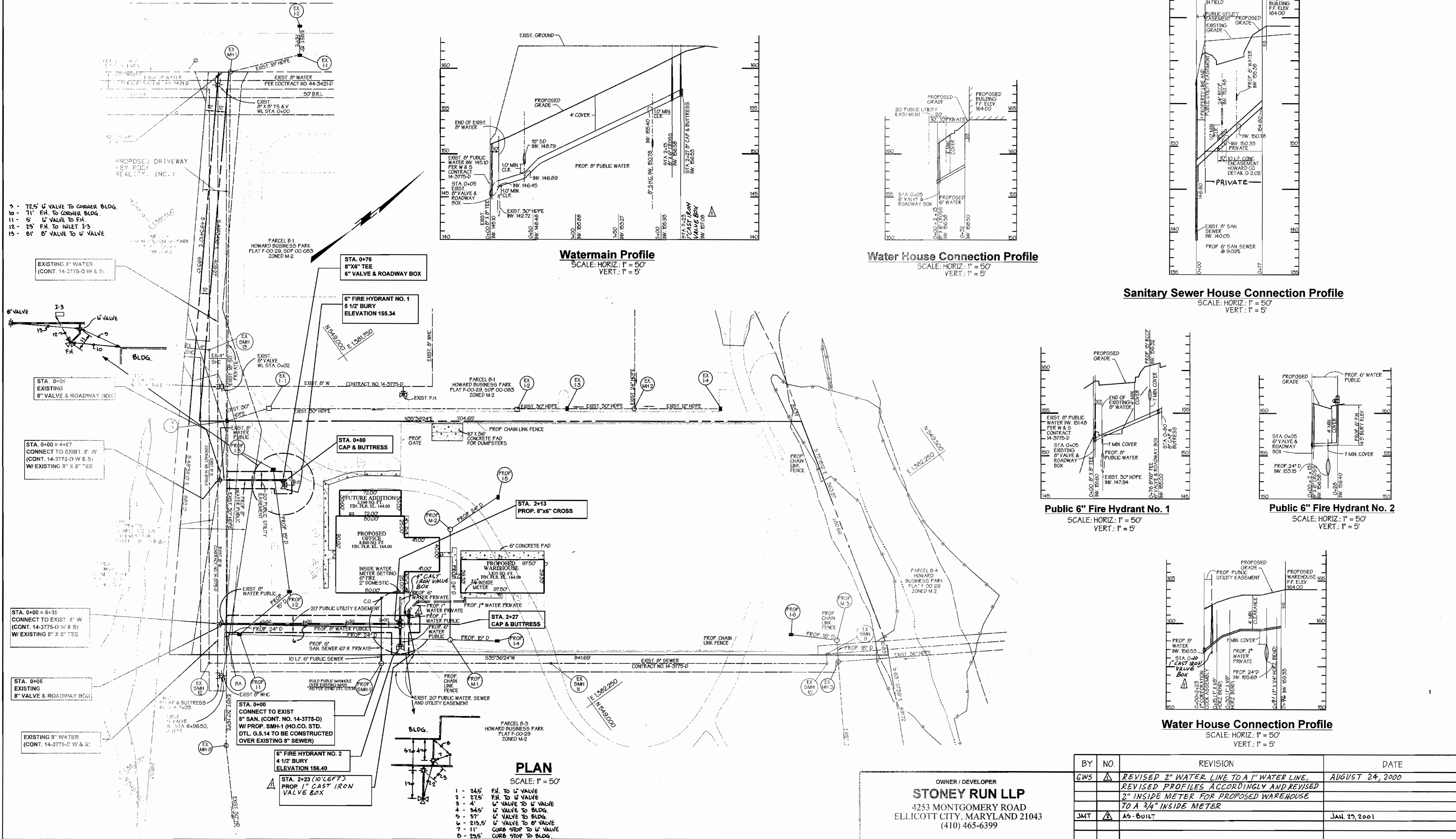
CONTRACT NO. 14-3878-D
600 SCALE MAP NO. 43

**PUBLIC WATER & SEWER MAIN
HOWARD BUSINESS PARK
PARCEL B-2**

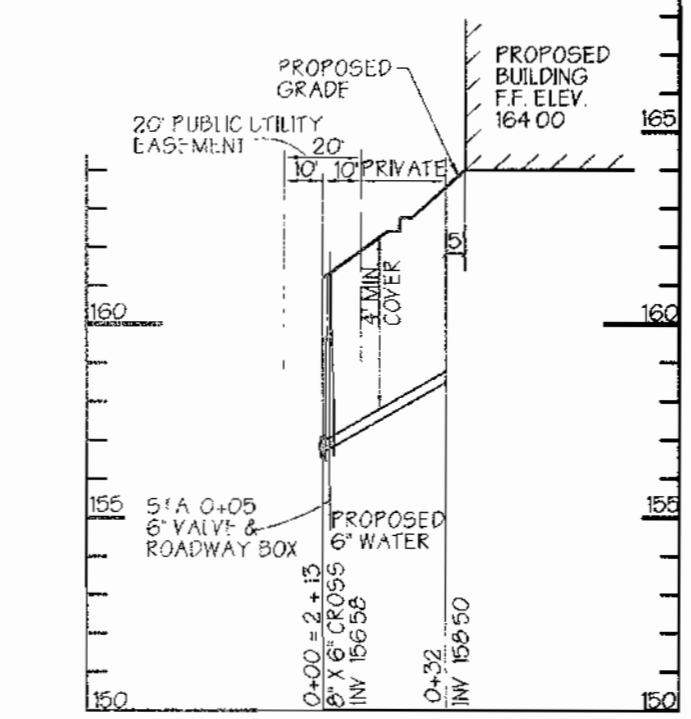
CONTRACT NO. 14-3878-D
HOWARD COUNTY, MARYLAND
ELECTION DISTRICT #01

APRIL 27, 2000
SHEET 1 OF 2

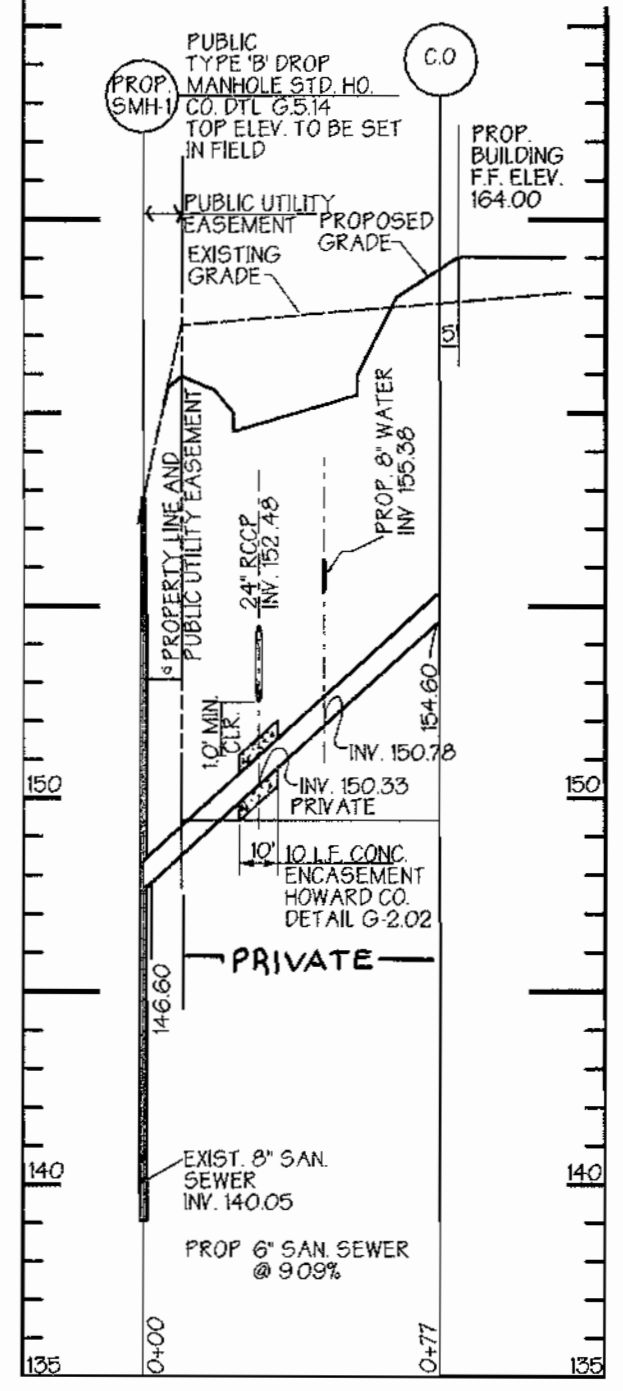
DORSEY RUN ROAD
 MAJOR COLLECTOR - 20' ROW PUBLIC ROAD
 BALTIMORE WASHINGTON AUTO EXCHANGE, INC.
 PLATBOOK NO. 12215 & 12216
 ZONED M-2



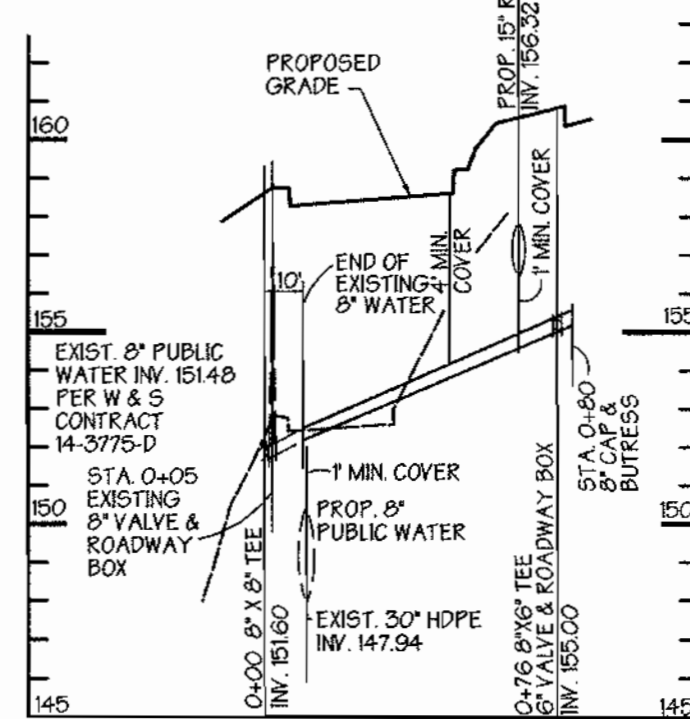
Watermain Profile
 SCALE: HORIZ.: 1" = 50'
 VERT.: 1" = 5'



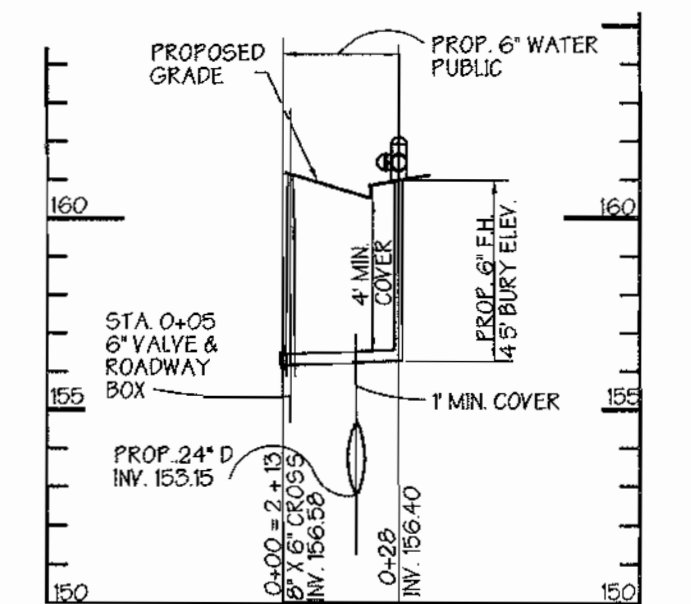
Water House Connection Profile
 SCALE: HORIZ.: 1" = 50'
 VERT.: 1" = 5'



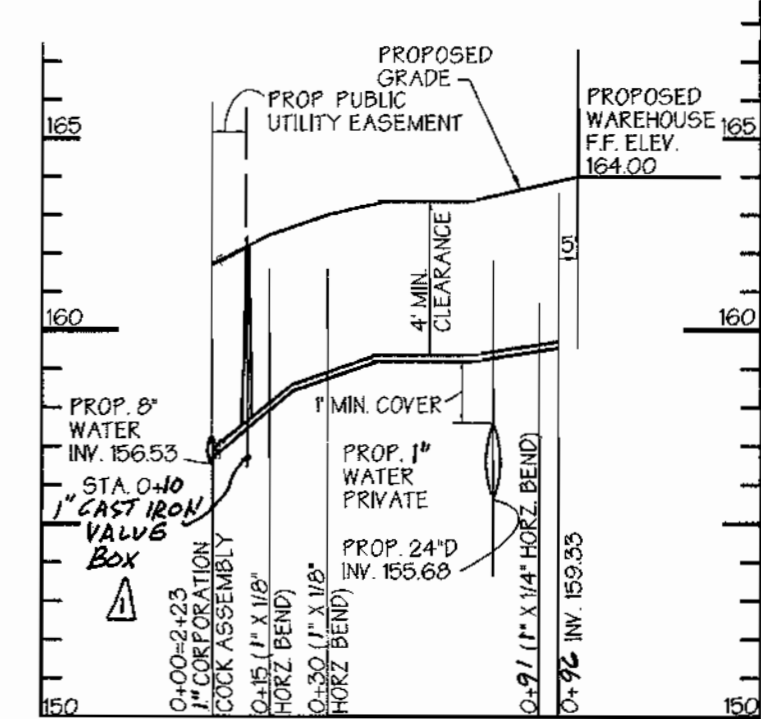
Sanitary Sewer House Connection Profile
 SCALE: HORIZ.: 1" = 50'
 VERT.: 1" = 5'



Public 6" Fire Hydrant No. 1
 SCALE: HORIZ.: 1" = 50'
 VERT.: 1" = 5'



Public 6" Fire Hydrant No. 2
 SCALE: HORIZ.: 1" = 50'
 VERT.: 1" = 5'



Water House Connection Profile
 SCALE: HORIZ.: 1" = 50'
 VERT.: 1" = 5'

OWNER / DEVELOPER
STONEY RUN LLP
 4253 MONTGOMERY ROAD
 ELLICOTT CITY, MARYLAND 21043
 (410) 465-6399

BY	NO.	REVISION	DATE
GWS	Δ	REVISED 2" WATER LINE TO A 1" WATER LINE, REVISED PROFILES ACCORDINGLY AND REVISED 2" INSIDE METER FOR PROPOSED WAREHOUSE TO A 3/4" INSIDE METER	AUGUST 24, 2000
JMT	Δ	A5-BUILT	JAN. 23, 2001

DEPARTMENT OF PUBLIC WORKS
 HOWARD COUNTY, MARYLAND
 Michael A. Suranillo
 CHIEF, BUREAU OF UTILITIES
 DATE: 7/1/00

DEPARTMENT OF PLANNING & ZONING
 HOWARD COUNTY, MARYLAND
 Chief Development Engineer
 DATE: 7/1/00

GWS
GEORGE W. STEPHENS, JR. AND ASSOCIATES, INC.
 Civil Engineers and Land Surveyors
 1020 Cromwell Bridge Road
 Towson, Maryland 21286
 (410) 825-8120



DESIGNED: PRC, KE
 DRAFTED: KE
 CHECKED: PRC

PLAN & PROFILES
 CONTRACT NO. 14 3878 D
 600 SCALE MAP NO. 43
 BLOCK NO. 6

PUBLIC WATER & SEWER MAIN
HOWARD BUSINESS PARK
PARCEL B-2
 CONTRACT NO. 14-3878-D
 HOWARD COUNTY, MARYLAND
 ELECTION DISTRICT #01
 APRIL 27, 2000
 SHEET 2 OF 2
 P/N 9408-FILE NAME 9408waterplan1.sct