

# CONTRACT No.44-3875-D

## EMERSON SECTION 2

### PHASE 2

(FORMERLY KEY PROPERTY)  
HOWARD COUNTY, MARYLAND  
DEPARTMENT OF PUBLIC WORKS

#### GENERAL NOTES

- PART 1
- APPROXIMATE LOCATION OF EXISTING MAINS ARE SHOWN. THE CONTRACTOR SHALL TAKE ALL NECESSARY PRECAUTIONS TO PROTECT EXISTING MAINS AND SERVICES AND MAINTAIN UNINTERRUPTED SUPPLY. ANY DAMAGE INCURRED SHALL BE REPAIRED IMMEDIATELY TO THE SATISFACTION OF THE ENGINEER AT THE CONTRACTOR'S EXPENSE.
  - ALL HORIZONTAL CONTROLS ARE BASED ON MARYLAND STATE COORDINATES. NORTH AMERICAN DATUM OF 1983 (NAD 83).
  - ALL VERTICAL CONTROLS ARE BASED ON U.S.G.S. DATA.
  - ALL PIPE ELEVATIONS SHOWN ARE INVERT ELEVATIONS.
  - CLEAR ALL UTILITIES BY A MINIMUM OF 6". CLEAR ALL POLES BY 2" OF MINIMUM OR TUNNEL AS REQUIRED. THE OWNER HAS CONTACTED THE UTILITY COMPANIES AND HAS MADE ARRANGEMENT FOR BRACING OF POLES AS SHOWN ON THE DRAWINGS. IN THE EVENT THE CONTRACTOR'S WORK REQUIRED THE BRACING OF ADDITIONAL POLES, ANY COST INCURRED BY THE OWNER FOR BRACING OF ADDITIONAL POLES OR DAMAGES SHALL BE DEDUCTED FROM MONEY OWED THE CONTRACTOR. THE CONTRACTOR SHALL COORDINATE WITH THE UTILITY COMPANIES TO SCHEDULE THE BRACING OF THE POLES.
  - FOR DETAILS NOT SHOWN ON THE DRAWINGS AND FOR MATERIALS AND CONSTRUCTION METHODS USE HOWARD COUNTY DESIGN MANUAL, VOLUME IV, STANDARD SPECIFICATIONS AND DETAILS FOR CONSTRUCTION (LATEST EDITION). THE CONTRACTOR SHALL HAVE A COPY OF VOLUME IV ON THE JOB.
  - WHERE TEST PITS HAVE BEEN MADE ON EXISTING UTILITIES, THEY ARE NOTED BY THE SYMBOL AT THE LOCATION OF THE TEST PIT. A NOTE OR NOTES CONTAINING THE RESULTS OF THE TEST PIT OR PITS IS INCLUDED ON THE DRAWINGS. EXISTING UTILITIES IN THE VICINITY OF THE PROPOSED WORK FOR WHICH TEST PITS HAVE NOT BEEN DUG SHALL BE LOCATED BY THE CONTRACTOR TWO WEEKS IN ADVANCE OF CONSTRUCTION OPERATIONS AT HIS OWN EXPENSE.
  - CONTRACTOR SHALL NOTIFY THE FOLLOWING UTILITY COMPANIES OR AGENCIES AT LEAST FIVE WORKING DAYS BEFORE STARTING WORK SHOWN ON THESE PLANS:

STATE HIGHWAY ADMINISTRATION	1-410-531-5533
BO&E CO. CONTRACTOR SERVICES	1-410-850-4620
BO&E CO. UNDER GROUND DAMAGE CONTROL	1-410-787-9068
MISS UTILITY	1-800-257-7777
COLONIAL PIPELINE CO.	1-410-795-1390
HOWARD COUNTY DEPARTMENT OF PUBLIC WORKS BUREAU OF UTILITIES	1-410-313-4900

- TREES AND SHRUBS ARE TO BE PROTECTED FROM DAMAGE TO MAXIMUM EXTENT. TREES AND SHRUBS LOCATED WITHIN THE CONSTRUCTION STRIP ARE NOT TO BE REMOVED OR DAMAGED BY THE CONTRACTOR. CONTRACTOR SHALL REMOVE TREES, STUMPS, AND ROOTS ALONG LINE OF EXCAVATION. PAYMENT FOR SUCH REMOVAL SHALL BE INCLUDED IN THE UNIT PRICE BID FOR CONSTRUCTION OF THE MAIN.
- THE CONTRACTOR SHALL NOTIFY THE BUREAU OF HIGHWAYS, HOWARD COUNTY, AT (410) 313-2450 AT LEAST FIVE WORKING DAYS BEFORE ANY OPEN CUT OF ANY COUNTY ROAD OR BORING/JACKING OPERATION IN COUNTY ROADS FOR LAYING WATER/SEWER MAINS OR HOUSE CONNECTIONS. THE APPROVAL OF THESE DRAWINGS WILL CONSTITUTE COMPLIANCE WITH DPW REQUIREMENTS PER SECTION 18.114(c) OF THE HOWARD COUNTY CODE.

#### PART II - WATER

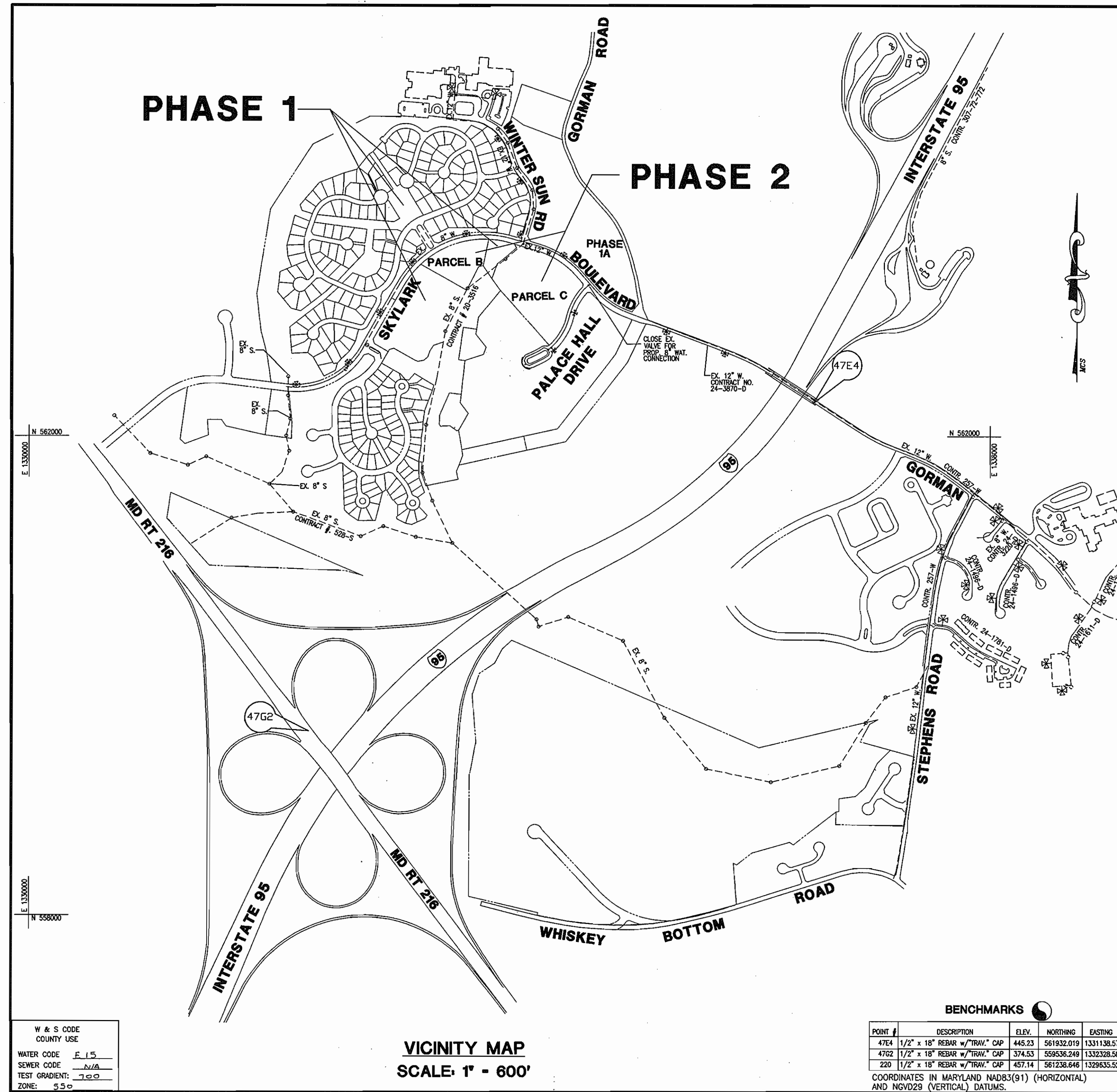
- ALL WATER MAINS TO BE D.I.P. CLASS 52 UNLESS OTHERWISE NOTED.
- TOPS OF ALL WATER MAINS TO HAVE A MINIMUM OF 3'-6" COVER UNLESS OTHERWISE NOTED.
- VALVES ADJACENT TO TEES SHALL BE STRAPPED TO TEES.
- ALL FITTINGS SHALL BE BUTTRESSED OR ANCHORED WITH CONCRETE IN ACCORDANCE WITH THE STANDARD DETAILS UNLESS OTHERWISE PROVIDED FOR ON THE DRAWINGS.
- FIRE HYDRANTS SHALL BE SET TO THE BURY LINE ELEVATIONS SHOWN ON THE DRAWINGS. ALL FIRE HYDRANTS SHALL BE RESTRAINED AND BUTTRESSED WITH CONCRETE IN ACCORDANCE WITH STANDARD DETAILS. SOIL AROUND THE FIRE HYDRANT SHALL BE COMPACTED IN ACCORDANCE WITH SECTION 1000 AND 1005 OF THE STANDARD SPECIFICATIONS.
- THE CONTRACTOR SHALL NOT OPERATE ANY WATER MAIN VALVES ON THE EXISTING WATER SYSTEM.
- ALL DIP FITTINGS SHALL BE IN ACCORDANCE WITH AWWA SPECIFICATIONS C-153 DUCTILE IRON COMPACT FITTINGS, 3-INCH THROUGH 12-INCH FOR WATER AND OTHER LIQUIDS
- ALL EXISTING VALVES TO BE CLOSED WHEN CONNECTION TO THE SYSTEM IS MADE.

SHEET INDEX	
NO.	DESCRIPTION
1	TITLE SHEET
2	PROPOSED 8" WATER MAIN PLAN & PROFILE - PALACE HALL DRIVE

QUANTITIES				
ITEMS	QUANTITIES ESTIMATED	AS-BUILT		
		QUANTITIES	TYPE	MANUFACTURER/SUPPLIER
<b>8" VERTICAL BEND</b>				
8" SLEEVE & SPACER	1 EA.	1 EA.	—	U.S. PIPE & FOUNDRY
6" WATER	50 L.F.	74 L.F.	CL.52 DIP	GRIFFIN
8" WATER	640 L.F.	625 L.F.	CL.52 DIP	GRIFFIN
FIRE HYDRANTS	2	2	—	MUELLER CO.
6" VALVE	2	2	MJ VALVES	MUELLER CO.
8" VALVE	1	1	MJ VALVES	MUELLER CO.
8" CAP	1	1	—	U.S. PIPE & FOUNDRY

NAME OF UTILITY CONTRACTOR : C. J. MILLER  
SURVEY AND DRAFTING DIVISION AS-BUILT DATE: MAY 2000

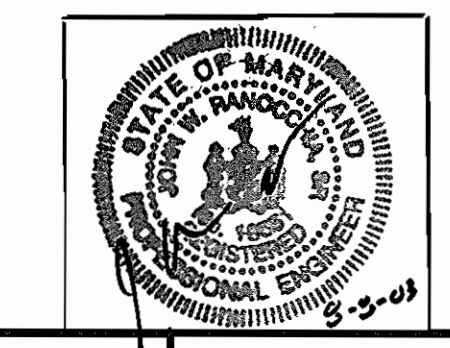
TYPE OF BUILDING:	—
NUMBER OF LOTS / PARCELS:	—
NUMBER OF WATER HOUSE CONNECTIONS:	—
NUMBER OF SEWER HOUSE CONNECTIONS:	—
DRAINAGE AREA:	MIDDLE PATUXENT
TREATMENT PLANT:	LITTLE PATUXENT WATER RECLAMATION PLANT SAVAGE HOWARD COUNTY



**AS BUILT**  
DATE: MAY 2000



THIS SEAL IS FOR REVISION #2 ONLY  
REVISION #2 BY:  
Christopher M. Householder, Hdr.  
712 Columbia Gateway Dr., Ste. 100  
Columbia, MD 21046  
410.872.8425 (Cell) - 410.872.8425 (Fax)



THIS SEAL IS FOR REVISION #1 ONLY  
REVISION #1 BY:  
RMW, INC.  
200 EAST PENNSYLVANIA AVE.  
TOWSON, MD 21286  
410.286.3333

REVIEWED FOR HOWARD SOIL CONSERVATION DISTRICT AND MEETS TECHNICAL REQUIREMENTS.  
*John A. Robertson* 9-10-01  
SIGNATURE DATE

THIS PLAN IS APPROVED FOR SOIL EROSION AND SEDIMENT CONTROL BY THE HOWARD SOIL CONSERVATION DISTRICT.  
*John M. Myers* 9-10-01  
HOWARD SOIL CONSERVATION DISTRICT DATE

SEDIMENT CONTROL MEASURES WILL BE IMPLEMENTED IN ACCORDANCE WITH SECTION 219 OF THE SPECIFICATIONS AND ROAD CONSTRUCTION PLANS F-01-AS

DEPARTMENT OF PUBLIC WORKS  
HOWARD COUNTY, MARYLAND  
*Robert M. W. Smith* 8-31-01  
CHIEF, BUREAU OF UTILITIES DATE

DEPARTMENT OF PLANNING & ZONING  
HOWARD COUNTY, MARYLAND  
*John M. Myers* 9/10/01  
CHIEF, DEVELOPMENT ENGINEERING DIVISION DATE

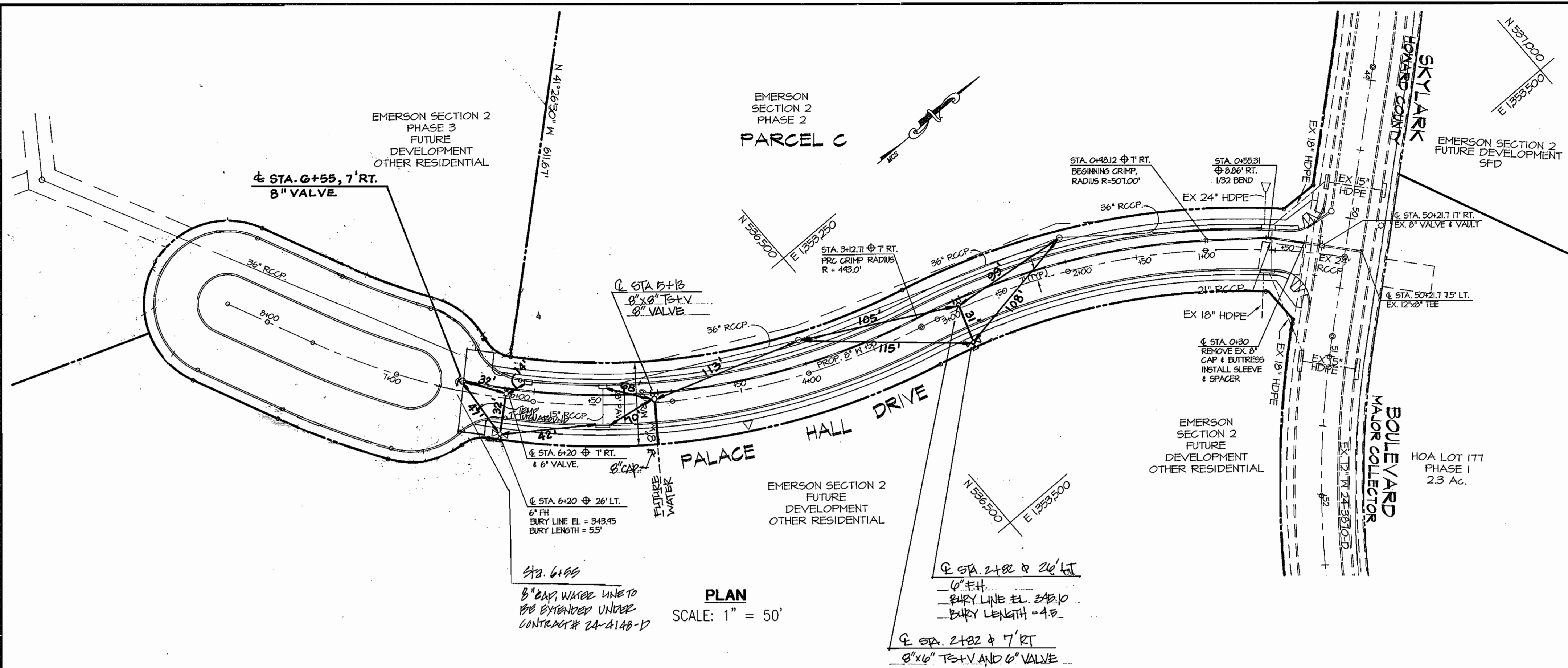
**MRA**  
MORRIS & RITCHIE ASSOCIATES, INC.  
ENGINEERS, PLANNERS, SURVEYORS  
AND LANDSCAPE ARCHITECTS  
110 WEST ROAD SUITE 105  
TOWSON, MARYLAND 21204  
(410) 821-1690  
FAX (410) 821-1748

DESIGN: TAM  
DRAWN: MLS  
CHECK: DNM  
DATE: 3/22/01

NO.	DESCRIPTION	DATE
1	RELLOCATE EX. F.H. ADD 8" W.H.C. EX. B+13	7/27/03
2	CAP W/8" S.C. W/8" S.C. DELETE REMAINING LINE	8/7/03

VICINITY MAP AND GENERAL NOTES  
TAX MAP 47  
6TH ELECTION DISTRICT  
PARCEL P.837, P.3 & P.462  
HOWARD COUNTY, MARYLAND  
CONTRACT NO. 44-3875-D

EMERSON SECTION 2  
PHASE 2  
PARCEL C  
SCALE AS SHOWN  
SHEET 1 OF 2

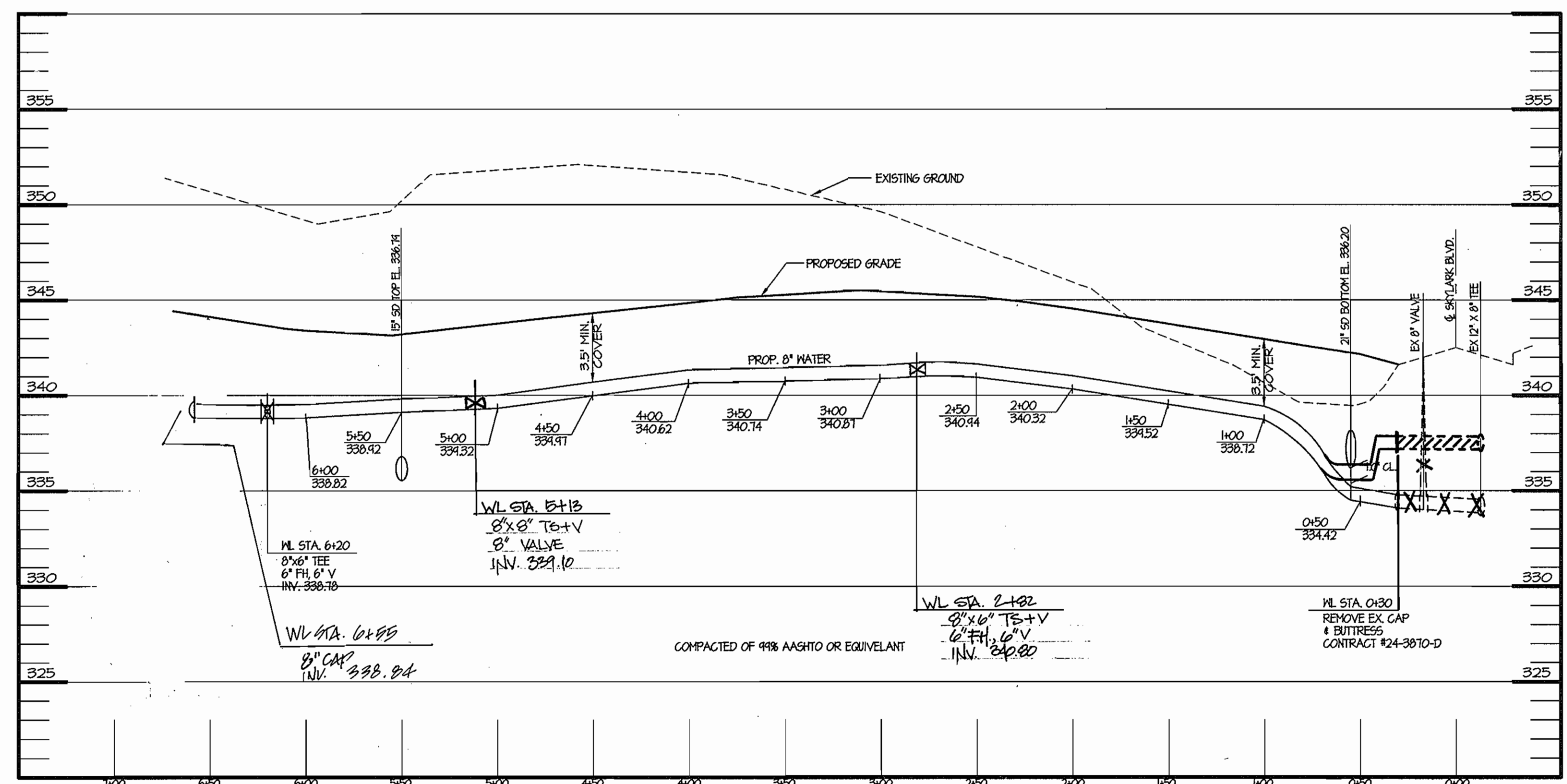


**PLAN**  
SCALE: 1" = 50'

STA. 6+55  
8" CAP. WATER LINE TO BE EXTENDED UNDER CONTRACT # 24-4148-D

STA. 2+82 & 2+26 LT  
6" FH  
BURY LINE EL. 343.10  
BURY LENGTH = 4.5

STA. 2+82 & 7' RT  
8" x 6" TE+V AND 6" VALVE



**AS BUILT**  
DATE: MAY 2000

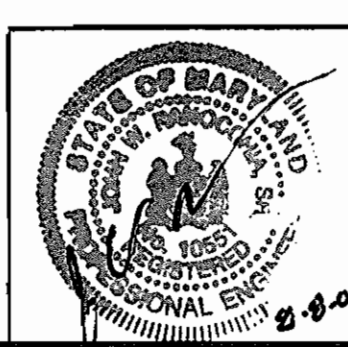


THIS SEAL FOR REVISION 2 ONLY

REVISION 2 BY:  
CHRISTOPHER CONSULTANTS, LLC

1772 COLUMBIA GATEWAY DR., STE. 100  
COLUMBIA, MD 21046

410.872.8400 (VOICE)  
410.872.8493 (FAX)



THIS SEAL FOR DESIGN #1 ONLY

DESIGNER #1 BY:  
DMW, INC.  
200 EAST PENNSYLVANIA AVE  
TOWSON, MD 21286  
410-286-9333

DEPARTMENT OF PUBLIC WORKS  
HOWARD COUNTY, MARYLAND

Robert R. ... 8-31-01  
CHIEF, BUREAU OF UTILITIES

DEPARTMENT OF PLANNING & ZONING  
HOWARD COUNTY, MARYLAND

... 9/1/01  
CHIEF, DEVELOPMENT ENGINEERING DIVISION

**MRA** MORRIS & RITCHE ASSOCIATES, INC.  
ENGINEERS, PLANNERS, SURVEYORS  
AND LANDSCAPE ARCHITECTS

110 WEST ROAD SUITE 105  
TOWSON, MARYLAND 21204  
(410) 821-1890  
FAX (410) 821-1748

DESIGN: TAM  
DRAWN: MLS  
CHECK: DNM  
DATE: 3/22/01

NO.	REVISION	DATE
1	RELocate EX FH, ADD 8" W/C @ STA. 5+13	07/05
2	Cap WL @ STA. 6+55, RELOC REMAINING LINE	8-7-03

**8" WATER MAIN PLAN & PROFILES**  
PALACE HALL DRIVE

600' SCALE MAP NO. BLOCK NO.

**EMERSON SECTION 2**  
**PHASE 2** PARCEL 'C'

TAX MAP 47  
6TH ELECTION DISTRICT  
/ PARCEL P.837, P.3 & P.462  
HOWARD COUNTY, MARYLAND  
CONTRACT NO. 44-3875-D

SCALE AS SHOWN  
SHEET 2 OF 2