

SHEET INDEX	
NO	DESCRIPTION
1	TITLE SHEET
2	PLAN OF SEWER AND WATER MAINS
3	PROFILE OF A WATER MAIN
4	PROFILE OF A SEWER MAIN

WATER & SEWER EXTENSION

TROY HILL CORPORATE CENTER

PARCELS A-21 AND A-22

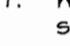
PHASE IIIB

1st ELECTION DISTRICT

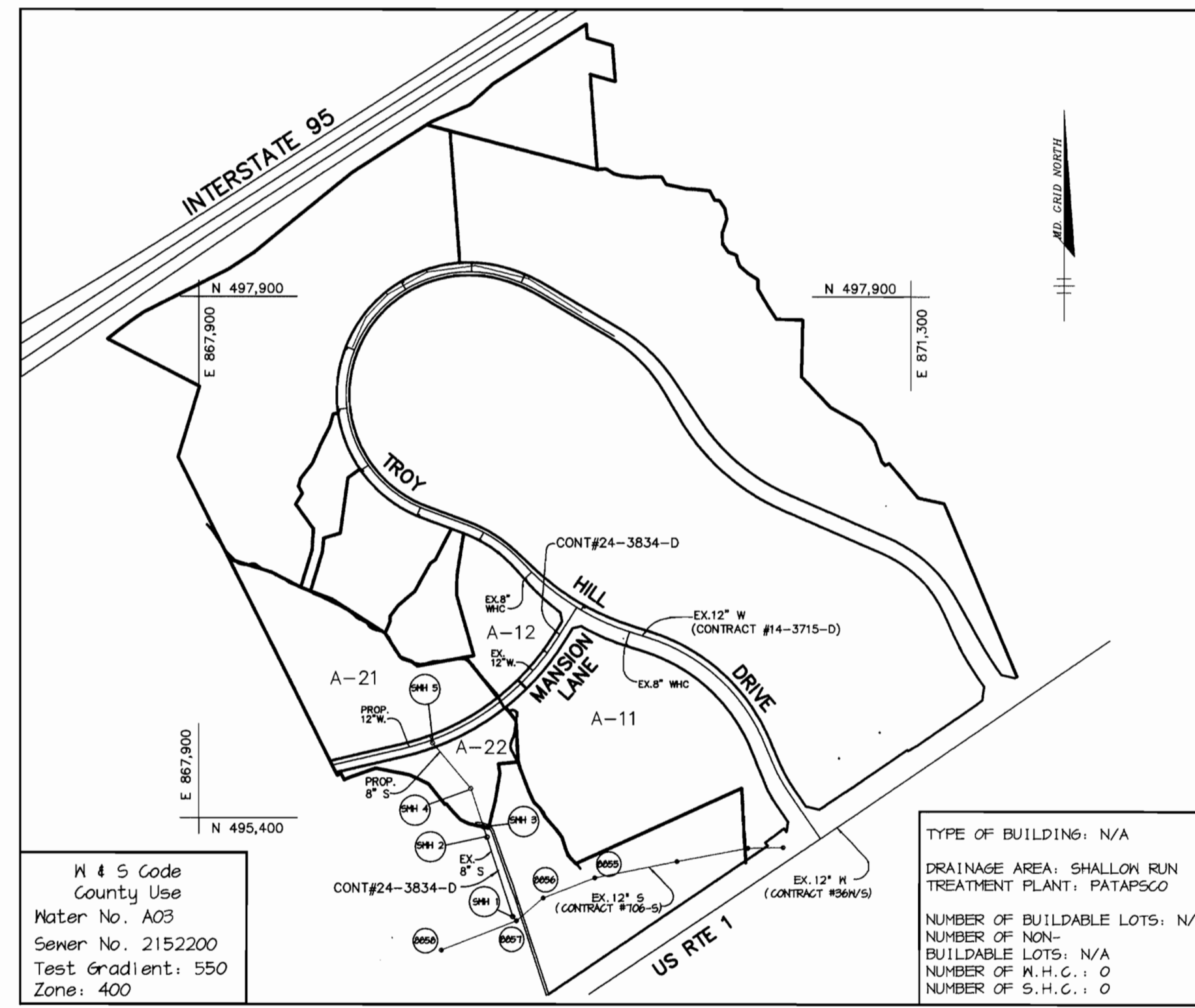
HOWARD COUNTY, MARYLAND

CONTRACT NO. 14-3873-D

GENERAL NOTES

- Approximate location of existing mains are shown. The contractor shall take all necessary precautions to protect existing mains and services and maintain uninterrupted supply. Any damage incurred shall be repaired immediately to the satisfaction of the Engineer at the contractor's expense.
- All horizontal controls are based on Maryland State Coordinates.
- All vertical controls are based on U.S.G.S. data.
- All pipe elevations shown are invert elevations.
- Clear all utilities by a minimum of 6". Clear all poles by 2'-0" minimum or tunnel as required. The owner has contacted the utility companies and has made arrangements for bracing of poles as shown on the drawings. In the event the contractor's work requires the bracing of additional poles, any cost incurred by the owner for bracing of additional poles or damages shall be deducted from money owed the contractor. The contractor shall coordinate with the utility companies to schedule the bracing of the poles.
- For details not shown on the drawings, and for materials and construction methods use Howard County Design Manual, Volume IV, Standard Specifications and Detail for Construction. (Latest Edition). The contractor shall have a copy of Volume IV on the job.
- Where test pits have been made on existing utilities, they are noted by the symbol  at the location of the test pit. A note or notes containing the results of the test pit or pits is included on the drawings. Existing utilities in the vicinity of the proposed work for which test pits have not been dug shall be located by the contractor two weeks in advance of construction operations at his own expense.
- Contractor shall notify the following utility companies or agencies at least five working days before starting work shown on these plans:

State Highway Administration	531-5533
Baltimore Gas & Electric Co. Contractor Services	850-4620
Baltimore Gas & Electric Co. Underground Damage Control	781-9066
Miss Utility	1-800-251-TITI
Colonial Pipeline Co.	345-1340
Bureau of Utilities, Howard County Department of Public Works	313-4900
- Trees and shrubs are to be protected from damage to maximum extent. Trees and shrubs located within the construction strip are not to be removed or damaged by the contractor.
- Contractor shall remove trees, stumps and roots along line of excavation. Payment for such removal shall be included in the unit price bid for construction of the main.
- All water mains to be D.I.P. Class 52 unless otherwise noted.
- Tops of all water mains to have a minimum of 3-1/2' cover unless otherwise noted.
- Valves adjacent to trees shall be strapped to trees.
- All fittings shall be buttressed or anchored with concrete in accordance with the Standard Details unless otherwise provided for on the drawings.
- Fire hydrants shall be set to the bury line elevations shown on the drawings. All fire hydrants shall be restrained and buttressed with concrete in accordance with Section 1000 and 1005 of the Standard Specifications.
- The contractor shall not operate any water main valves on the existing water system.
- All water house connections shall be for inside meter setting unless otherwise noted on plans or in specifications.
- All sewer mains shall be D.I.P. and P.V.C. unless otherwise noted.
- All manholes shall be 4'-0" inside diameter unless otherwise noted.
- Force mains shall be D.I.P. only.
- Manholes shown with 12" and 16" walls are for brick manholes only.
- Manholes designated M.T. in plan and profile shall have watertight frame and covers, Standard Detail 65.52. Where watertight manhole frame and cover is used, set top of frame 1'-6" above finished grade unless otherwise noted on the drawings.
- House(s) with the symbol "C.N.S." indicates that cellar cannot be served.
- Manholes can be either brick or precast concrete structures.
- Contractor is solely responsible for construction means, methods, techniques, sequences, procedures, and safety precautions and programs.
- The fire hydrant shall be installed as per standard detail M.1.11.
- Fire hydrants will be located 3' FROM BACK OF CURB unless otherwise noted.
- For sprinkler systems, all townhomes or multi-family dwelling units should have a minimum of 1" connection with a 3/4" meter.
- The contractor shall notify the Bureau of Highways, Howard County, at (410) 313-1450 at least five (5) working days before any open cut of any County road or boring/jacking operation in County roads for laying water/sewer mains or house connections. The approval of these drawings will constitute compliance with DPW requirements per Section 18.114(a) of the Howard County Code.
- Howard County DPW is hereby granted permission to access private lots shown on these plans in order to maintain public water and sewer house connections at the curb stops and/or cleanouts.



VICINITY MAP
SCALE: 1"=600'

QUANTITIES				
ITEMS	QUANTITIES ESTIMATED	AS-BUILT		
		QUANTITIES	TYPE	MANUFACTURER / SUPPLIER
12" WATER	990 LF			
6" WATER	48 LF			
FIRE HYDRANTS	3 EA.			
12" VALVES	2 EA.			
6" VALVES	3 EA.			
8" SEWER	517 LF			
SEWER MANHOLES	3 EA.			

NAME OF UTILITY CONTRACTOR :

Sediment control measures for this contract will be implemented in accordance with Section 219 of the specifications and as shown on F-00-130

Review for Howard Soil Conservation District and meets technical requirements.

Clayl Simmons 7/24/00
NATURAL RESOURCES CONSERVATION SERVICE DATE

This plan is approved for soil erosion and sediment control by the Howard Soil Conservation District.

John Roberts 7/24/00
HOWARD SOIL CONSERVATION DISTRICT DATE

DEPARTMENT OF PUBLIC WORKS HOWARD COUNTY, MARYLAND <i>Robert W. Reimer</i> 7-19-00 CHIEF, BUREAU OF UTILITIES DATE	DEPARTMENT OF PLANNING & ZONING HOWARD COUNTY, MARYLAND <i>Arthur E. Muegge</i> 7/26/00 CHIEF, DEVELOPMENT ENGINEERING DIVISION DATE
---	---

RIEMER MUEGGE & ASSOCIATES, INC.
 ENGINEERING • ENVIRONMENTAL SERVICES • PLANNING • SURVEYING
 8818 Centre Park Drive, Columbia, Maryland 21045
 tel 410.997.8900 fax 410.997.9282
 98357 / WS1B.DWG

Arthur E. Muegge
 ARTHUR E. MUEGGE #8707

DES: KCB					
DRN: KCB					
CHK: CJR					
DATE: 7/12/00	BY	NO.	REVISION	DATE	

TITLE SHEET

600' SCALE MAP NO. 37 BLOCK NO. 17 & 18

TROY HILL CORPORATE CENTER
 PHASE IIIB
 PARCELS A-21 AND A-22
 1st ELECTION DISTRICT
 HOWARD COUNTY, MARYLAND
 CONTRACT 14-3873-D

SCALE AS SHOWN

SHEET 1 OF 4

PROPERTY OF
HOWARD COUNTY, MARYLAND
L.577 F.414
PARCEL 561
ZONED M-1

PROPERTY OF
MARY D. WHITE
L.355, F.50
PARCEL 137
ZONED M-1

PROPERTY OF
JOHN P. WHITE
L.393, F.488
PARCEL 332
ZONED M-1

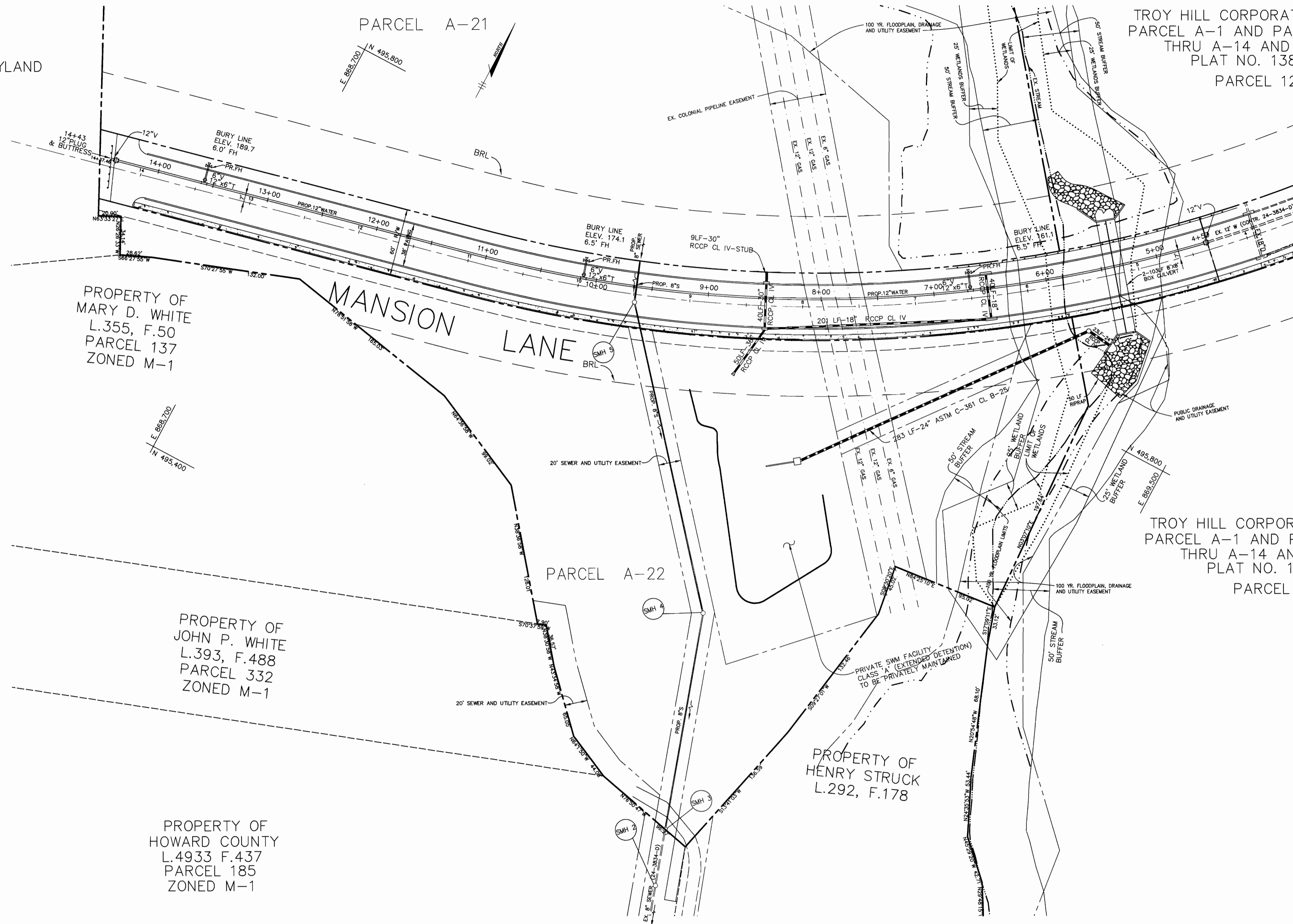
PROPERTY OF
HOWARD COUNTY
L.4933 F.437
PARCEL 185
ZONED M-1

PARCEL A-21

PARCEL A-22

TROY HILL CORPORATE CENTER
PARCEL A-1 AND PARCELS A-8
THRU A-14 AND A-16
PLAT NO. 13838
PARCEL 12

TROY HILL CORPORATE CENTER
PARCEL A-1 AND PARCELS A-8
THRU A-14 AND A-16
PLAT NO. 13838
PARCEL 11



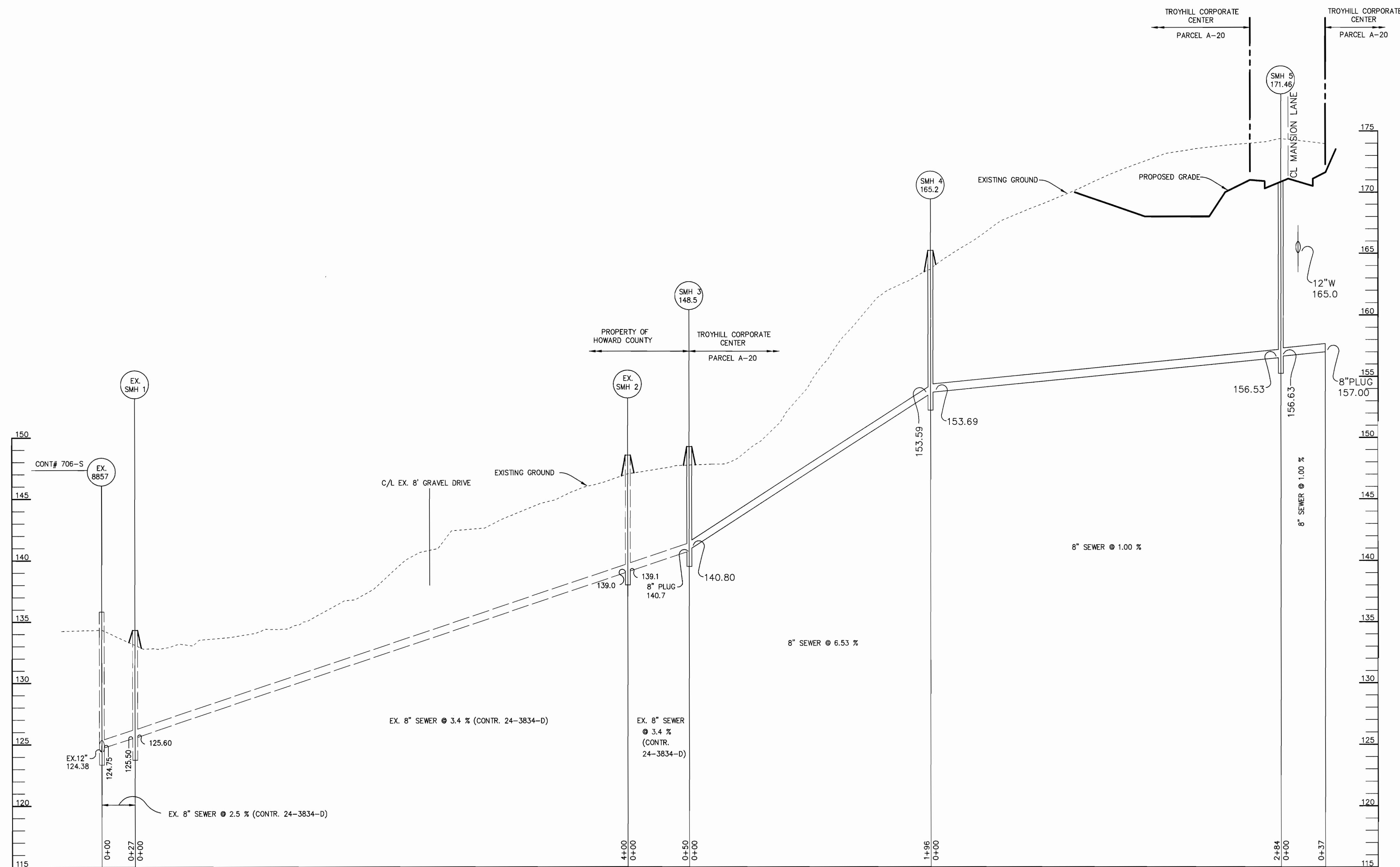
F:\PROJECT\98357\MS2B.dwg Thu Jul 13 08:09:17 2000 RIEMER MUEGGE & ASSOCIATES, INC.

DEPARTMENT OF PUBLIC WORKS HOWARD COUNTY, MARYLAND <i>Robert D. ...</i> CHIEF, BUREAU OF UTILITIES 7-19-00 DATE	DEPARTMENT OF PLANNING & ZONING HOWARD COUNTY, MARYLAND <i>Arthur E. Muegge</i> CHIEF, DEVELOPMENT ENGINEERING DIVISION 7/20/00 DATE	RIEMER MUEGGE & ASSOCIATES, INC. ENGINEERING • ENVIRONMENTAL SERVICES • PLANNING • SURVEYING 8818 Centre Park Drive, Columbia, Maryland 21045 tel 410.997.8900 fax 410.997.9282 98357 / WS2B.DWG	 ARTHUR E. MUEGGE #8707	DES: KCB DRN: KCB CHK: CJR DATE: 7/12/00 BY NO. REVISION DATE	<p style="text-align: center;">PLAN OF SEWER AND WATER MAINS</p> 600' SCALE MAP NO. 37 BLOCK NO. 17 & 18	<p style="text-align: center;">TROY HILL CORPORATE CENTER PHASE IIIB PARCELS A-21 AND A-22 1st ELECTION DISTRICT HOWARD COUNTY, MARYLAND CONTRACT 14-3873-D</p>	SCALE AS SHOWN SHEET 2 OF 4
--	---	---	----------------------------	---	---	--	---

STRUCTURE SCHEDULE

STRUCTURE	TYPE	LOCATION	INV. IN	INV. OUT	TOP	REMARKS
SMH-3	STD. MH	* N 495,311 E 869,263	140.80 (8")	140.70 (8")	148.5	HOCO STD. DETAIL 6 5.12
SMH-4	STD. MH	* N 495,497 E 869,202	153.69 (8")	153.59 (8")	165.2	HOCO STD. DETAIL 6 5.12
SMH-5	STD. MH	* N 495,713 E 869,019	156.63 (8")	156.53 (8")	171.46	HOCO STD. DETAIL 6 5.12

NOTES: * LOCATION OF MANHOLES IS AT CENTER OF TOP COVER.



PROFILE

SCALE:
HOR. - 1" = 50'
VERT. - 1" = 5'

F:\PROJECT\98357\WS4B.dwg Thu Jul 13 08:05:24 2000 RIEMER MUEGGE & ASSOCIATES, INC.

DEPARTMENT OF PUBLIC WORKS
HOWARD COUNTY, MARYLAND
Robert Berman
CHIEF, BUREAU OF UTILITIES
DATE 7-19-00

DEPARTMENT OF PLANNING & ZONING
HOWARD COUNTY, MARYLAND
Arthur E. Muegge
CHIEF, DEVELOPMENT ENGINEERING DIVISION
DATE 7/12/00

RIEMER MUEGGE & ASSOCIATES, INC.
ENGINEERING • ENVIRONMENTAL SERVICES • PLANNING • SURVEYING
8818 Centre Park Drive, Columbia, Maryland 21045
tel 410.997.8900 fax 410.997.9262
98357 / WS4B.DWG



DES:	KCB				
DRN:	KCB				
CHK:	CJR				
DATE:	7/12/00	BY:	NO.	REVISION	DATE

PROFILE OF A SEWER MAIN
600' SCALE MAP NO. 37 BLOCK NO. 17 & 18

TROY HILL CORPORATE CENTER
PHASE IIIB
PARCELS A-21 AND A-22
1st ELECTION DISTRICT
HOWARD COUNTY, MARYLAND
CONTRACT 14-3873-D

SCALE AS SHOWN
SHEET 4 OF 4