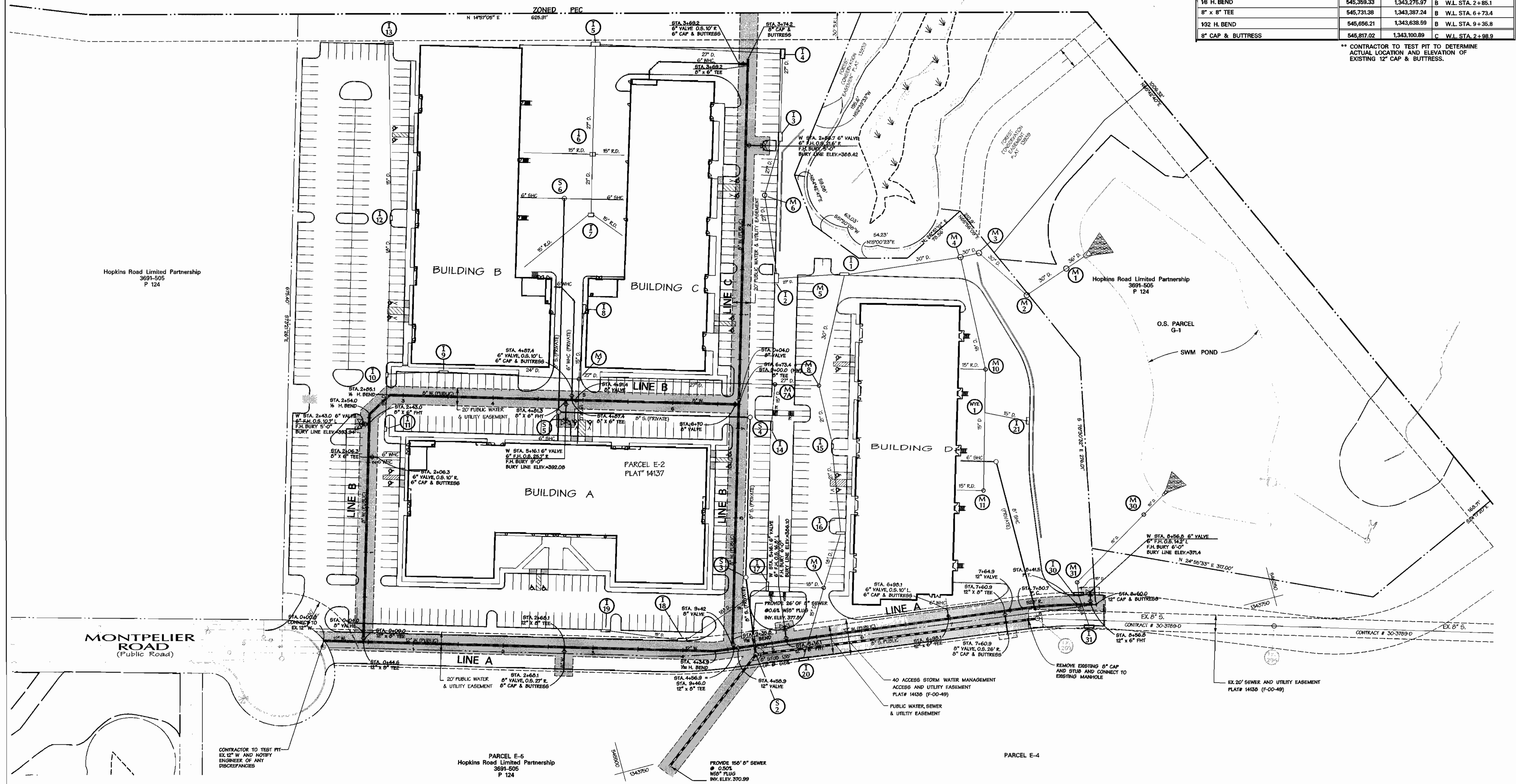




Johns Hopkins University  
Applied Physics Laboratory  
4009825  
P. 289

ITEMS	COORDINATES		STATION
	NORTH	EAST	
EXIST. 12" CAP AT PROP. CONNECTION	**	**	A W.L. STA. 0+00.0
12" X 8" TEE	545,259.17	1,343,534.08	A W.L. STA. 0+44.6
132 H. BEND	545,633.14	1,343,645.93	A W.L. STA. 4+34.9
12" X 8" TEE	545,654.93	1,343,648.68	A W.L. STA. 4+56.9
12" P. C.	545,976.20	1,343,689.18	A W.L. STA. 7+80.7
12" P. T.	546,035.84	1,343,700.76	A W.L. STA. 8+41.5
12" CAP & BUTTRESS	546,057.10	1,343,706.18	A W.L. STA. 8+63.4
16 H. BEND	545,331.95	1,343,290.74	B W.L. STA. 2+54.0
16 H. BEND	545,359.33	1,343,275.97	B W.L. STA. 2+85.1
8" X 8" TEE	545,731.38	1,343,387.24	B W.L. STA. 6+73.4
132 H. BEND	545,656.21	1,343,638.59	B W.L. STA. 9+35.8
8" CAP & BUTTRESS	545,817.02	1,343,100.89	C W.L. STA. 2+98.9

\*\* CONTRACTOR TO TEST PIT TO DETERMINE ACTUAL LOCATION AND ELEVATION OF EXISTING 12" CAP & BUTTRESS.



DEPARTMENT OF PUBLIC WORKS  
HOWARD COUNTY, MARYLAND

*R. J. ...*  
7-27-00  
CHIEF - BUREAU OF UTILITIES - DATE

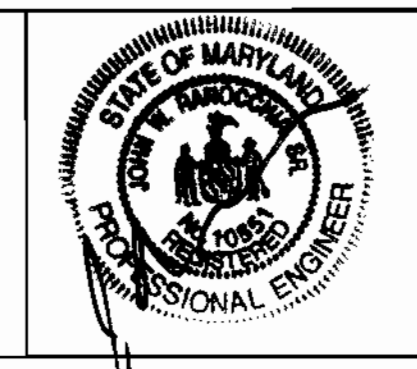
DEPARTMENT OF PLANNING & ZONING  
HOWARD COUNTY, MARYLAND

*H. ...*  
CHIEF - DEVELOPMENT ENGINEERING DIVISION - DATE

**DMW**  
Daft · McCune · Walker, Inc.

A Team of Land Planners, Landscape Architects, Engineers, Surveyors & Environmental Professionals

200 East Pennsylvania Avenue  
Towson, Maryland 21286  
410 296 3333  
Fax: 296 4705



DESIGN BY: CW  
DRAWN BY: CW  
CHECKED BY: JWR  
DATE: 7-13-00

BY	NO.	REVISION	DATE

**WATER & SEWER PLAN**

600 SCALE MAP NO. 41 BLOCK NO. 17

**Montpelier Research Park**  
Office & Commercial Buildings

Parcel E2 - Montpelier Research Park, 5th Election District, Howard County Maryland  
OWNER: HOPKINS ROAD LIMITED PARTNERSHIP 8030 RED BRANCH ROAD SUITE 200 - COLUMBIA, MD 21046  
DEVELOPER: TRAMMELL CROW COMPANY 6701 DEMOCRACY BLVD. SUITE 410-BETHESDA, MD 20817

CONTRACT NO. 34-3865-D

SCALE  
1" = 50'

SHEET  
2 OF 3

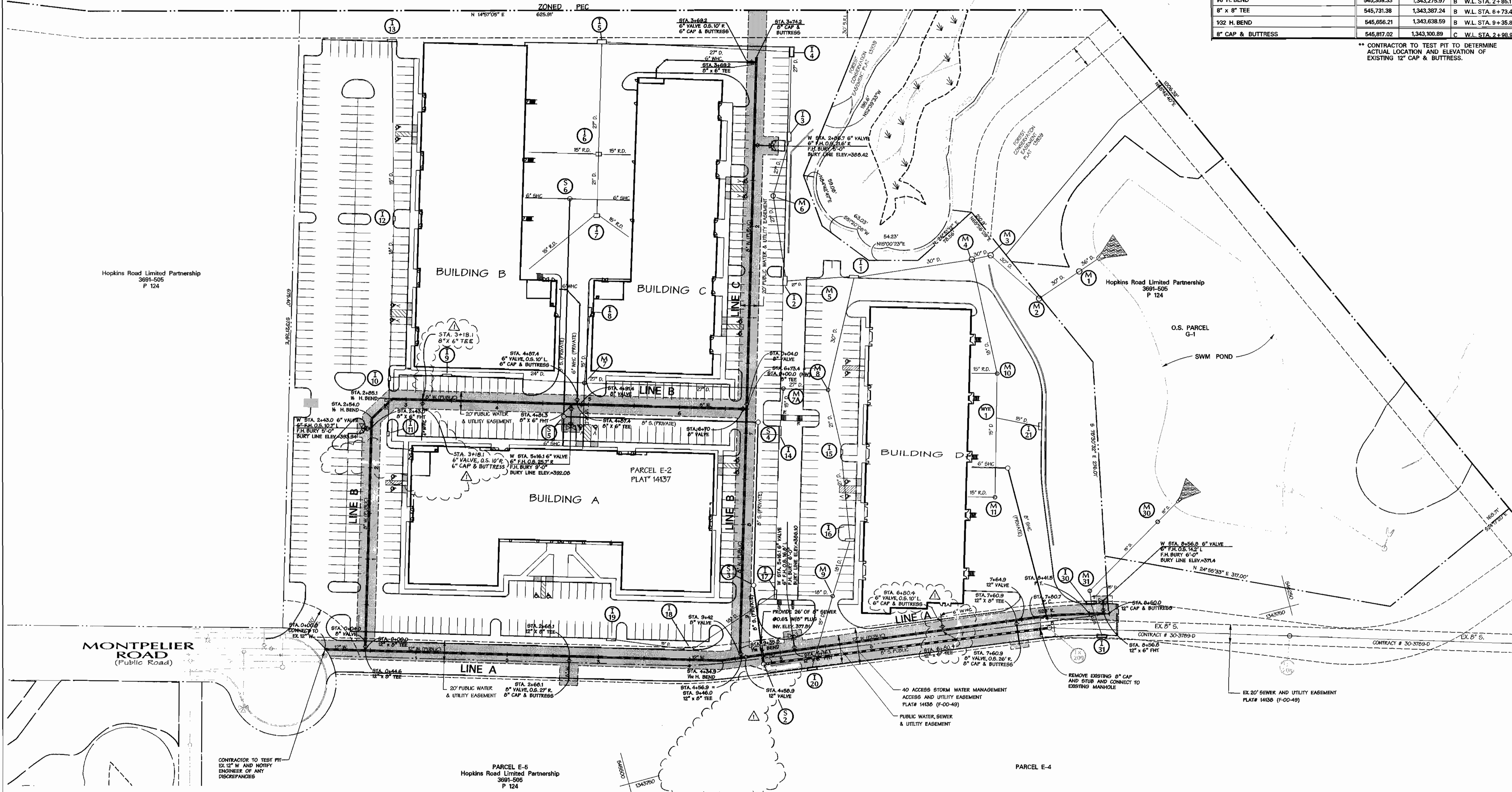




Johns Hopkins University  
Applied Physics Laboratory  
400625  
P 289

ITEMS	COORDINATES		STATION
	NORTH	EAST	
EXIST. 12" CAP AT PROP. CONNECTION	**	**	A W.L. STA. 0+00.0
12" X 8" TEE	545,259.17	1,343,534.08	A W.L. STA. 0+44.6
132 H. BEND	545,633.14	1,343,645.93	A W.L. STA. 4+34.9
12" X 8" TEE	545,654.93	1,343,648.68	A W.L. STA. 4+56.9
12" P. C.	545,976.20	1,343,689.18	A W.L. STA. 7+80.7
12" P. T.	546,035.84	1,343,700.76	A W.L. STA. 8+41.5
12" CAP & BUTTRESS	546,057.10	1,343,706.18	A W.L. STA. 8+63.4
18 H. BEND	545,331.95	1,343,290.74	B W.L. STA. 2+54.0
18 H. BEND	545,359.33	1,343,275.97	B W.L. STA. 2+85.1
8" X 8" TEE	545,731.38	1,343,387.24	B W.L. STA. 6+73.4
132 H. BEND	545,656.21	1,343,638.59	B W.L. STA. 9+35.8
8" CAP & BUTTRESS	545,917.02	1,343,100.89	C W.L. STA. 2+98.9

\*\* CONTRACTOR TO TEST PIT TO DETERMINE ACTUAL LOCATION AND ELEVATION OF EXISTING 12" CAP & BUTTRESS.



DEPARTMENT OF PUBLIC WORKS  
HOWARD COUNTY, MARYLAND

DEPARTMENT OF PLANNING & ZONING  
HOWARD COUNTY, MARYLAND

**DMW**  
Daft · McCune · Walker, Inc.  
A Team of Land Planners,  
Landscape Architects,  
Engineers, Surveyors &  
Environmental Professionals  
200 East Pennsylvania Avenue  
Towson, Maryland 21286  
410 296 3333  
Fax 296 4705



DESIGN BY:	PMW	REMOVE 8" S. THROUGH PARCELS E-4, E-5 RELOCATED WHC TO BLDG 'B' & 'D'	10/30/00
DRAWN BY:	CW		
CHECKED BY:	JWR		
DATE:	7-13-00		
BY NO.		REVISION	DATE

WATER & SEWER PLAN

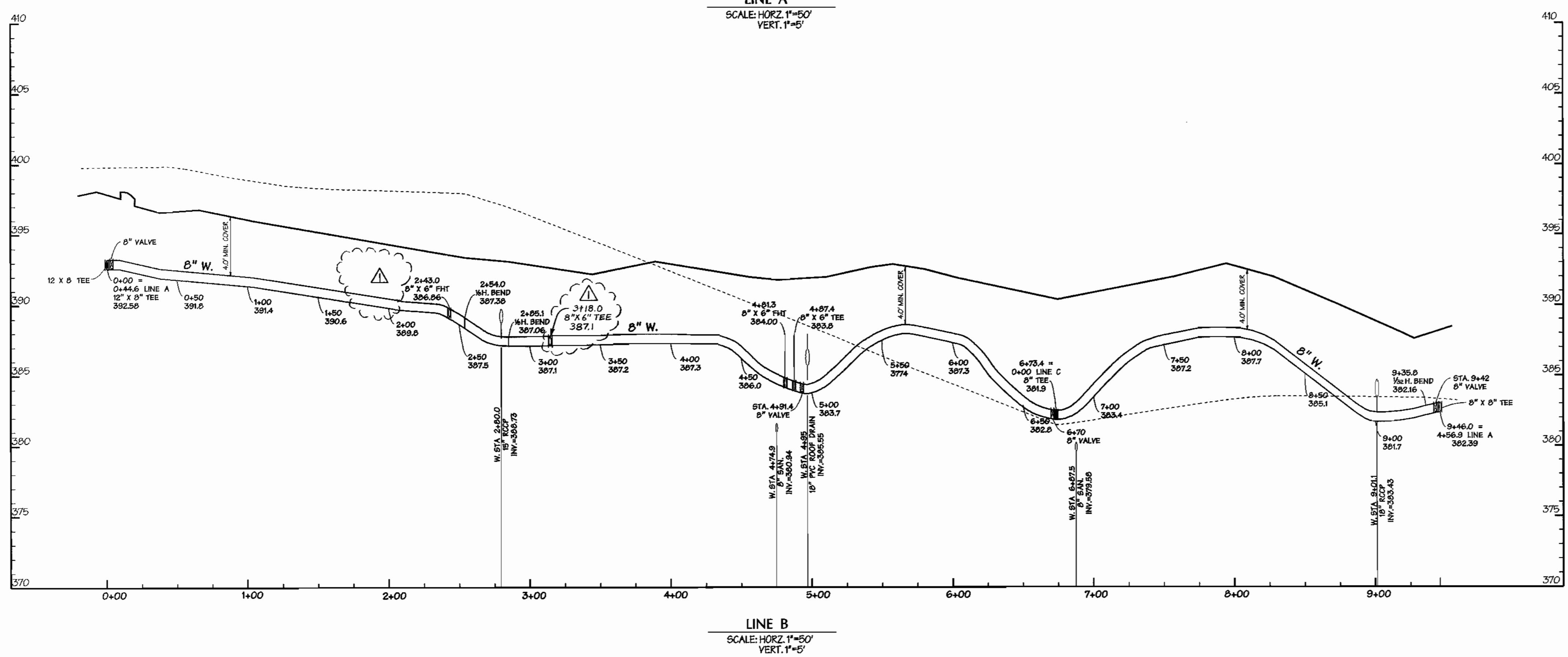
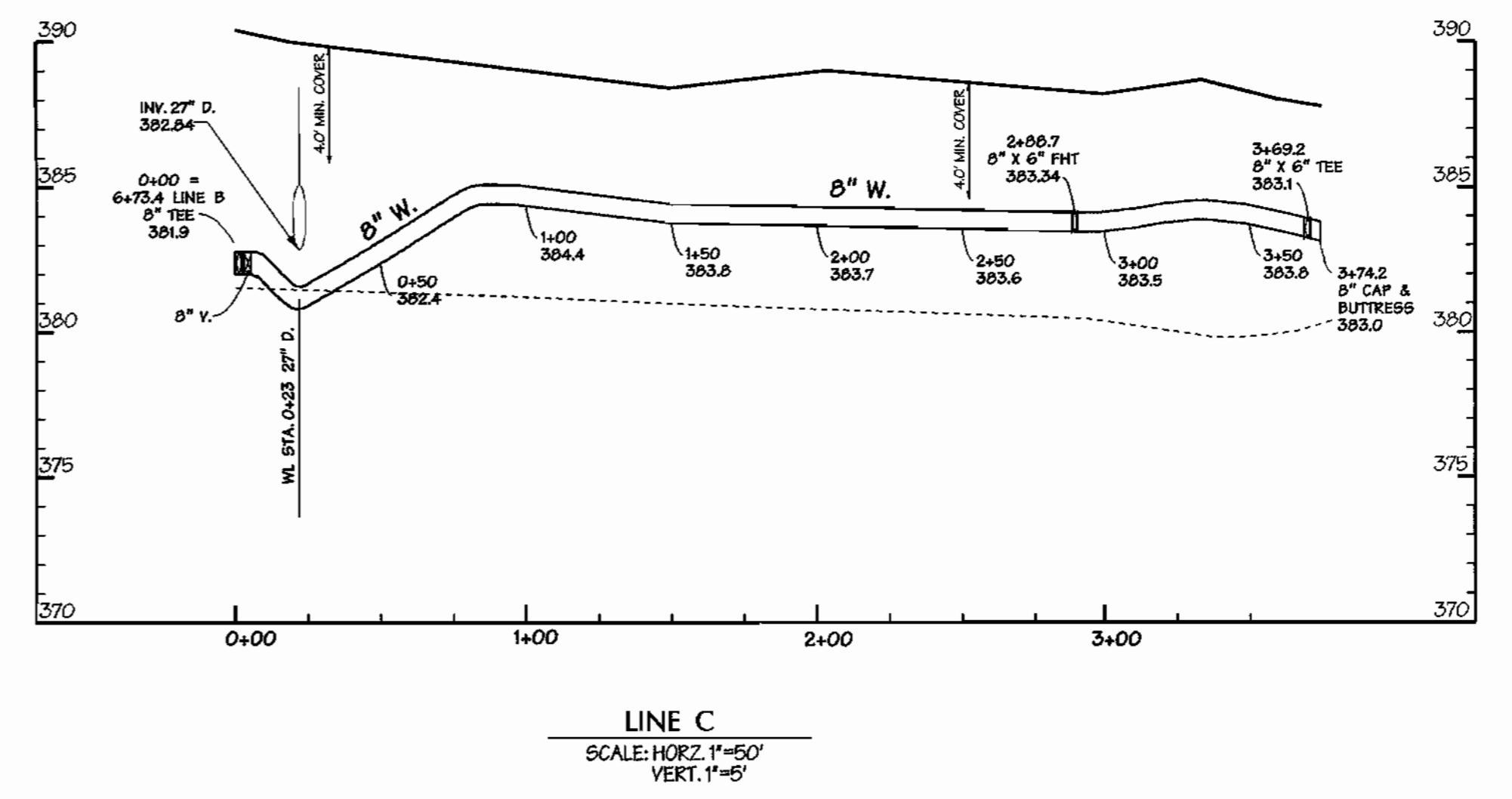
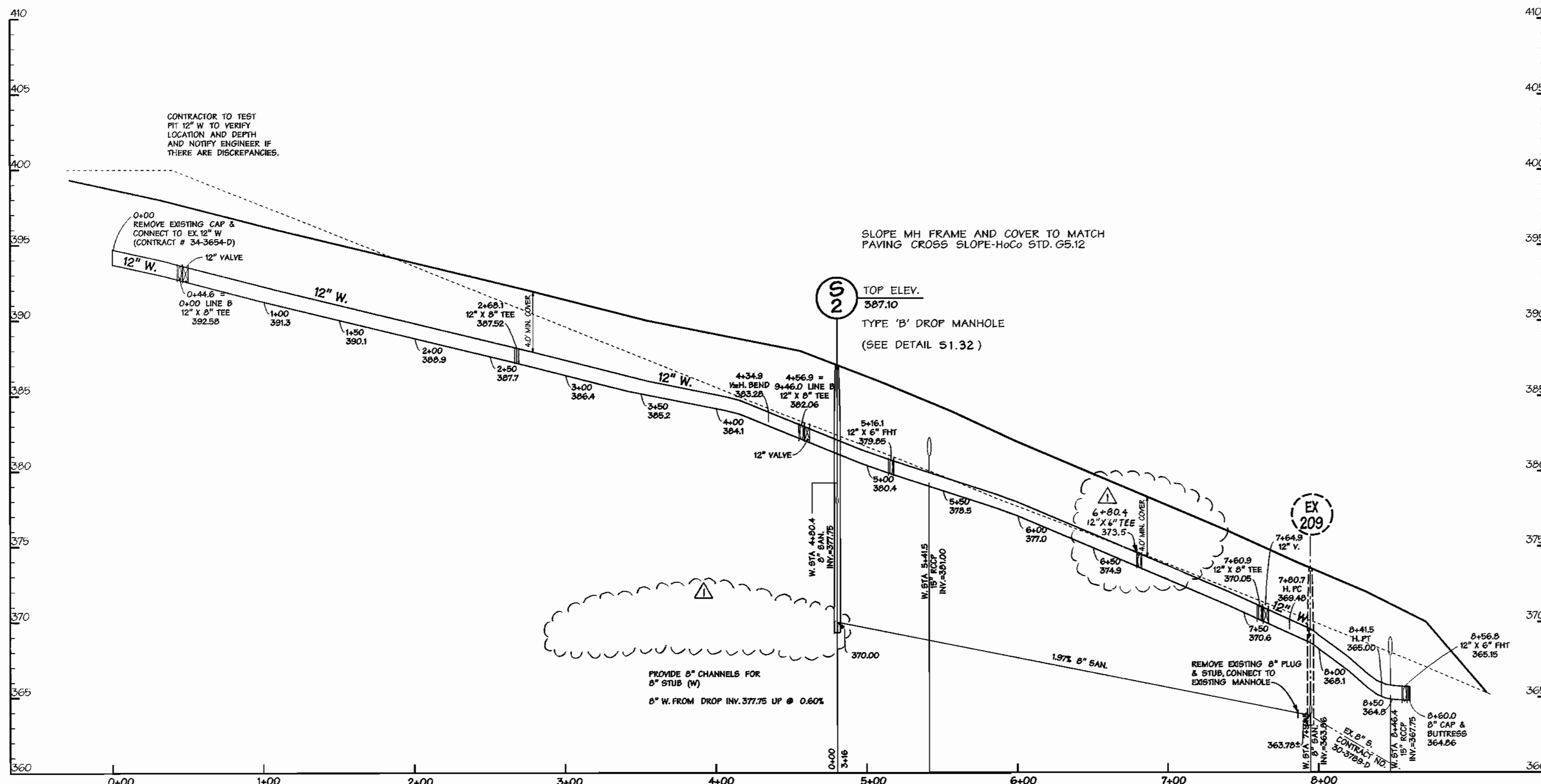
600 SCALE MAP NO. 41 BLOCK NO. 17

**Montpelier Research Park**  
Office & Commercial Buildings  
Parcel E2 - Montpelier Research Park, 5th Election District, Howard County Maryland  
OWNER: HOPKINS ROAD LIMITED PARTNERSHIP 8030 RED BRANCH ROAD SUITE 200 - COLUMBIA, MD 21046  
DEVELOPER: TRAMMELL CROW COMPANY 6701 DEMOCRACY BLVD. SUITE 410-BETHESDA, MD 20817  
CONTRACT NO. 34-3865-D

SCALE  
1" = 50'  
SHEET  
2 OF 3

7-27-00  
CHIEF - BUREAU OF UTILITIES - DATE

CHIEF - DEVELOPMENT ENGINEERING DIVISION - DATE



DEPARTMENT OF PUBLIC WORKS  
HOWARD COUNTY, MARYLAND

*Robert Berman* 7-27-00  
CHIEF - BUREAU OF UTILITIES - DATE

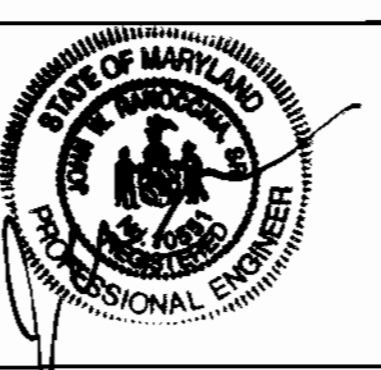
DEPARTMENT OF PLANNING & ZONING  
HOWARD COUNTY, MARYLAND

*Michael J. ...* 8/1/00  
CHIEF - DEVELOPMENT ENGINEERING DIVISION - DATE

**DMW**  
Daft · McCune · Walker, Inc.

A Team of Land Planners,  
Landscape Architects,  
Engineers, Surveyors &  
Environmental Professionals

200 East Pennsylvania Avenue  
Towson, Maryland 21286  
410 296 3333  
Fax 296 4705



DESIGN BY:	DMW	REMOVE 8" S. THROUGH PARCELS E-4, E-5 RELOCATED W.H.C. TO BLDG. 'B' & 'P'	10/30/00
DRAWN BY:	CW		
CHECKED BY:	JWR		
DATE:	7-13-00		
BY NO.		REVISION	DATE

WATER & SEWER PROFILES

600 SCALE MAP NO. 41 BLOCK NO. 17

**Montpelier Research Park**  
Office & Commercial Buildings

Parcel E2 - Montpelier Research Park, 5th Election District, Howard County Maryland  
OWNER: HOPKINS ROAD LIMITED PARTNERSHIP 8030 RED BRANCH ROAD SUITE 200 - COLUMBIA, MD 21046  
DEVELOPER: TRANMELL CROW COMPANY 6701 DEMOCRACY BLVD. SUITE 410-BETHESDA, MD 20817

CONTRACT NO. 34-3865-D

SCALE  
1" = 50'

SHEET  
3 OF 3

Thu Jul 13 09:44:51 2000 049471294712.mxd

Thu Jul 13 09:44:51 2000 049471294712.mxd

# Contract No. 34-3865-D

# MONTPELIER RESEARCH PARK

## PARCEL E2 WATER AND SEWER CONSTRUCTION PLANS Howard County, Maryland Department of Public Works

QUANTITIES			
AS-BUILT			
ITEMS	QUANTITIES ESTIMATED	QUANTITIES	MANUFACTURER /SUPPLIER
12" D.I.P.	860 LF		C 152 T.J. ATLANTIC STATES/A-I PIPE.
12" X 8" TEE	4	4	C 153 M.J. TYLER PIPE/A-I PIPE
12" X 6" TEE	3	3	C 153 M.J. TYLER PIPE/A-I PIPE
8" X 8" TEE	1	1	C 153 M.J. TYLER PIPE/A-I PIPE
8" D.I.P.	1320 LF		C 82 T.J. ATLANTIC STATES/A-I PIPE
8" VALVE	7	7	M.J.R.GATE. MUELLER/A-I PIPE.
12" VALVE	2	2	M.J.R.GATE. MUELLER/A-I PIPE.
12" 132 H BEND	1	1	O 1 M.J. 11/4 TYLER PIPE/A-I PIPE.
8" 132 H BEND	1	1	O 1 M.J. 11/4 TYLER PIPE/A-I PIPE.
8" 18 H BEND	2	2	O 1 M.J. 1/2 TYLER PIPE/A-I PIPE.
8" CAP	3	3	O 1 M.J. 3/4 TYLER PIPE/A-I PIPE.
12" CAP	1	1	O 1 M.J. 1/2 TYLER PIPE/A-I PIPE.
8" X 6" TEE	6	6	C 153 M.J. TYLER PIPE/A-I PIPE
8" PVC SEWER	334 LF		SDR-35 J-M MANUF/A-I PIPE.
8"x12" TYPE 'B' DROP MH	1	1	M. J. SLEEVES PRECAST.
6" D.I.P.	130 LF		C 152 T.S. ATLANTIC STATES/A-I PIPE.
6" CAP	4	4	O 1 M.J. 3/4 TYLER PIPE/A-I PIPE.
6" VALVE	9	9	M.J.R.GATE. MUELLER/A-I PIPE.
6" FIRE HYDRANT	5	5	MUELLER/A-I PIPE.

NAME OF UTILITY CONTRACTOR: PAVEX  
SURVEY AND DRAFTING DIVISION AS-BUILT DATE:

### GENERAL NOTES

- APPROXIMATE LOCATION OF EXISTING MAINS ARE SHOWN. THE CONTRACTOR SHALL TAKE ALL NECESSARY PRECAUTIONS TO PROTECT EXISTING MAINS AND SERVICES AND MAINTAIN UNINTERRUPTED SUPPLY. ANY DAMAGE INCURRED SHALL BE REPAIRED IMMEDIATELY TO THE SATISFACTION OF THE ENGINEER AT THE CONTRACTOR'S EXPENSE.
- ALL HORIZONTAL CONTROLS ARE BASED ON MARYLAND STATE COORDINATES.
- ALL VERTICAL CONTROLS ARE BASED ON U.S.G.S. DATA.
- ALL PIPE ELEVATIONS SHOWN ARE INVERT ELEVATIONS.
- CLEAR ALL UTILITIES BY A MINIMUM OF 6'. CLEAR ALL POLES BY 2'-0" MINIMUM OR TUNNEL AS REQUIRED. THE OWNER HAS CONTACTED THE UTILITY COMPANIES AND HAS MADE ARRANGEMENTS FOR BRACING OF POLES AS SHOWN ON THE DRAWINGS. IN THE EVENT THE CONTRACTOR'S WORK REQUIRES THE BRACING OF ADDITIONAL POLES, ANY COST INCURRED BY THE OWNER FOR BRACING OF ADDITIONAL POLES OR DAMAGES SHALL BE DEDUCTED FROM MONEY OWED TO THE CONTRACTOR. THE CONTRACTOR SHALL CORROBORATE WITH THE UTILITY COMPANIES TO SCHEDULE THE BRACING OF THE POLES.
- FOR DETAILS NOT SHOWN ON THE DRAWINGS, AND FOR MATERIALS AND CONSTRUCTION METHODS, USE HOWARD COUNTY DESIGN MANUAL, VOLUME IV, STANDARD SPECIFICATIONS AND DETAILS FOR CONSTRUCTION. THE CONTRACTOR SHALL HAVE A COPY OF VOLUME IV ON THE JOB.
- WHERE TEST PITS HAVE BEEN MADE ON EXISTING UTILITIES, THEY ARE NOTED BY THE SYMBOL AT THE LOCATION OF THE TEST PIT. A NOTE OR NOTES CONTAINING THE RESULTS OF THE TEST PIT OR PITS IS INCLUDED ON THE DRAWINGS. EXISTING UTILITIES IN THE VICINITY OF THE PROPOSED WORK FOR WHICH TEST PITS HAVE NOT BEEN DUG SHALL BE VERIFIED BY THE CONTRACTOR TO HIS OWN SATISFACTION. ANY DAMAGE TO EXISTING FACILITIES DUE TO THE CONTRACTOR'S NEGLIGENCE SHALL BE REPAIRED AT THE CONTRACTOR'S EXPENSE.
- CONTRACTOR SHALL NOTIFY THE FOLLOWING UTILITIES OR AGENCIES AT LEAST FIVE WORKING DAYS BEFORE STARTING WORK SHOWN ON THESE PLANS:  
STATE HIGHWAY ADMINISTRATION - (410) 531-5533  
BALTIMORE GAS & ELECTRIC CO. - CONTRACTOR SERVICES - (410) 850-4620  
BALTIMORE GAS & ELECTRIC CO. UNDERGROUND DAMAGE CONTROL - (410) 291-4607  
MESS UTILITY - (800) 257-7777  
COLONIAL PIPELINE CO. - (410) 549-4120  
BUREAU OF UTILITIES, HOWARD COUNTY DEPARTMENT OF PUBLIC WORKS - (410) 313-4900  
BELL ATLANTIC - 1-800-446-5266
- TREES AND SHRUBS ARE TO BE PROTECTED FROM DAMAGE TO MAXIMUM EXTENT. TREES AND SHRUBS LOCATED WITHIN THE CONSTRUCTION STRIP ARE NOT TO BE REMOVED OR DAMAGED BY THE CONTRACTOR.
- CONTRACTOR SHALL REMOVE TREES, STUMPS AND ROOTS ALONG LINE OF EXCAVATION. PAYMENT FOR SUCH REMOVAL SHALL BE INCLUDED IN THE UNIT PRICE BID FOR CONSTRUCTION OF THE MAIN.
- GENERAL NOTES (SEE ATTACHED)
- THE CONTRACTOR SHALL NOTIFY THE BUREAU OF HIGHWAYS, HOWARD COUNTY, AT 410-313-2450 AT LEAST FIVE (5) WORKING DAYS BEFORE ANY OPEN CUT OF ANY COUNTY ROAD OR BORING/JACKING OPERATION IN COUNTY ROADS FOR LAYING WATER/SEWER MAINS OR HOUSE CONNECTIONS. THE APPROVAL OF THESE DRAWINGS WILL CONSTITUTE COMPLIANCE WITH DPW REQUIREMENTS PER SECTION 18.14(c) OF THE HOWARD COUNTY CODE.

### PART II - WATER

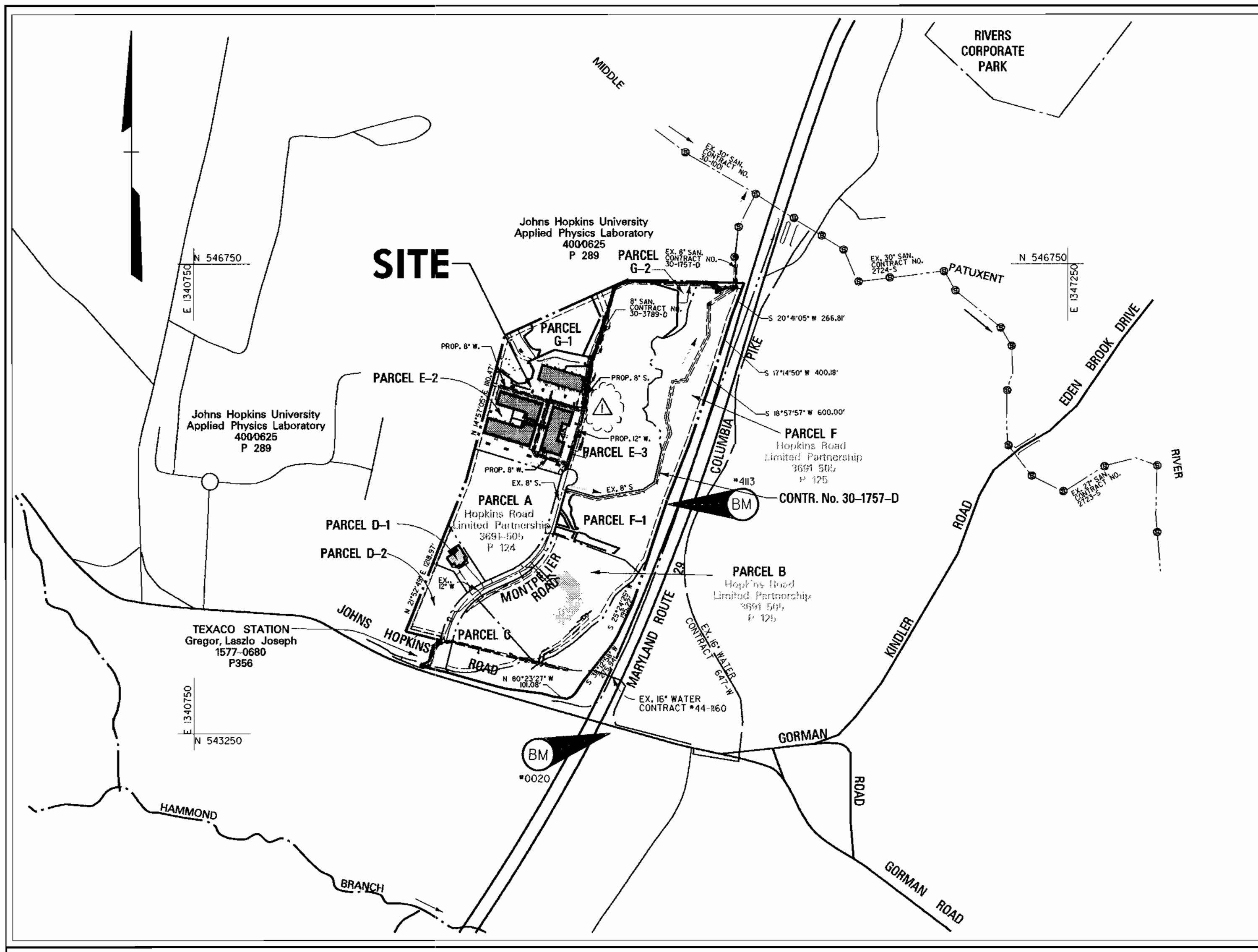
- ALL WATER MAINS TO BE D.I.P. CLASS 52 UNLESS OTHERWISE NOTED.
- TOPS OF ALL WATER MAINS TO HAVE A MINIMUM OF 3'-1/2" COVER UNLESS OTHERWISE NOTED.
- VALVES ADJACENT TO TEES SHALL BE STRAPPED TO TEES.
- ALL FITTINGS SHALL BE BUTTRESSED OR ANCHORED WITH CONCRETE IN ACCORDANCE WITH THE STANDARD DETAILS UNLESS OTHERWISE PROVIDED FOR ON THE DRAWINGS.
- FIRE HYDRANTS SHALL BE SET TO THE BURY LINE ELEVATIONS SHOWN ON THE DRAWINGS. ALL FIRE HYDRANTS SHALL BE BUTTRESSED WITH CONCRETE IN ACCORDANCE WITH STANDARD DETAIL 5. SOIL AROUND THE FIRE HYDRANT SHALL BE COMPACTED IN ACCORDANCE WITH SECTION 1003 OF THE STANDARD SPECIFICATIONS.
- THE CONTRACTOR SHALL NOT OPERATE ANY WATER MAIN VALVES ON THE EXISTING WATER SYSTEM.
- ALL WATER HOUSE CONNECTIONS SHALL BE FOR INSIDE METER SETTING, UNLESS OTHERWISE NOTED ON THE PLANS OR IN THE SPECIFICATIONS.
- ALL D.I.P. FITTINGS SHALL BE IN ACCORDANCE WITH A.W.W.A. SPECIFICATION C-153 DUCTILE IRON COMPACT FITTINGS, 3 INCH THROUGH 12 INCH FOR WATER AND OTHER LIQUIDS.
- ALL EXISTING VALVES TO BE CLOSED WHEN CONNECTION TO THE SYSTEM IS MADE.

### PART II - SEWER

- ALL SEWER MAINS SHALL BE P.V.C. OR D.I.P. CLASS 52 UNLESS OTHERWISE NOTED.
- THE CONTRACTOR SHALL PROVIDE A JOINT IN ALL SEWER MAINS WITHIN 2'-0" OF EXTERIOR MANHOLE WALL.
- ALL MANHOLES SHALL BE 4'-0" INSIDE DIAMETER UNLESS OTHERWISE NOTED.
- FORCE MAINS SHALL BE D.I.P. ONLY.
- MANHOLES SHOWN WITH 12" AND 18" WALLS ARE FOR BRICK MANHOLES ONLY. MANHOLES DESIGNATED W.T. IN PLAN AND PROFILE SHALL HAVE WATER TIGHT FRAME AND COVERS. STANDARD DETAIL 05.52, WHERE WATER TIGHT MANHOLE FRAME AND COVER IS USED, SET TOP OF FRAME 1'-6" ABOVE FINISHED GRADE UNLESS OTHERWISE NOTED ON THE DRAWINGS.
- HOUSES WITH THE SYMBOL "C.N.S." INDICATES THAT CELLAR CANNOT BE SERVED.

### BENCHMARK

DESCRIPTION
*413 N 544492.88 E 134177.82 ELEVATION = 391.65
CONCRETE MONUMENT 4" WEST OF TOP OF BANK OFF SOUTH BOUND LANE OF MARYLAND ROUTE 29 AT SURFACE.
*0020 N 543170.96 E 1343822.6 ELEVATION = 403.62
STANDARD MBS SURVEY DISC SET ON CONCRETE MONUMENT, FLUSH WITH THE GROUND.



### VICINITY MAP

SCALE: 1" = 600'

TYPE OF BUILDING:	COMMERCIAL
NO. OF LOTS / PARCELS:	2
NO. OF WATER CONNECTIONS:	2-6" 1-8"
NO. OF SEWER CONNECTIONS:	N/A
DRAINAGE AREA:	MIDDLE PATIENT
TREATMENT PLANT:	LITTLE PATIENT WATER RECLAMATION PLANT, SAVAGE, HOWARD COUNTY

WATER CODE:	E 21
TEST GRADIENT:	700
SEWER CODE:	6440000

SHEET INDEX	
SHEET No.	DESCRIPTION
1	COVER SHEET
2	WATER PLAN
3	WATER PROFILE

REVIEWED FOR NATURAL RESOURCE CONSERVATION SERVICE AND MEETS TECHNICAL REQUIREMENT  
*Chief Simmons* 8/4/00  
 SIGNATURE DATE

THIS DEVELOPMENT PLAN IS APPROVED FOR SOIL EROSION AND SEDIMENT CONTROL BY THE HOWARD COUNTY CONSERVATION DISTRICT.  
 APPROVED: *John K. Roberts* 8/4/00  
 HOWARD S.C.D. DATE

SEDIMENT CONTROL MEASURES WILL BE IMPLEMENTED IN ACCORDANCE WITH SECTION 219 OF THE SPECIFICATIONS AND SITE DEVELOPMENT PLAN SDP-00-112

DEPARTMENT OF PUBLIC WORKS  
 HOWARD COUNTY, MARYLAND  
*Robert W. Bennett* 7-27-00  
 CHIEF - BUREAU OF UTILITIES - DATE

DEPARTMENT OF PLANNING & ZONING  
 HOWARD COUNTY, MARYLAND  
*John K. Roberts* 8/1/00  
 CHIEF - DEVELOPMENT ENGINEERING DIVISION - DATE

**DMW**  
 Daft · McCune · Walker, Inc.  
 A Team of Land Planners, 200 East Pennsylvania Avenue, Towson, Maryland 21286  
 Landscape Architects, Engineers, Surveyors & Environmental Professionals  
 410 296 3333 Fax 296 4705



DESIGN BY:	DMW	REVISED QUANTITIES	10/30/00
DRAWN BY:	BIS		
CHECKED BY:	ADL		
DATE:	JWR	AS-BUILT CONDITIONS ADDED TO PLAN	4/30/01
BY NO.	K.C.I. 1	REVISION	DATE

600 SCALE MAP NO. 41 BLOCK NO. 17

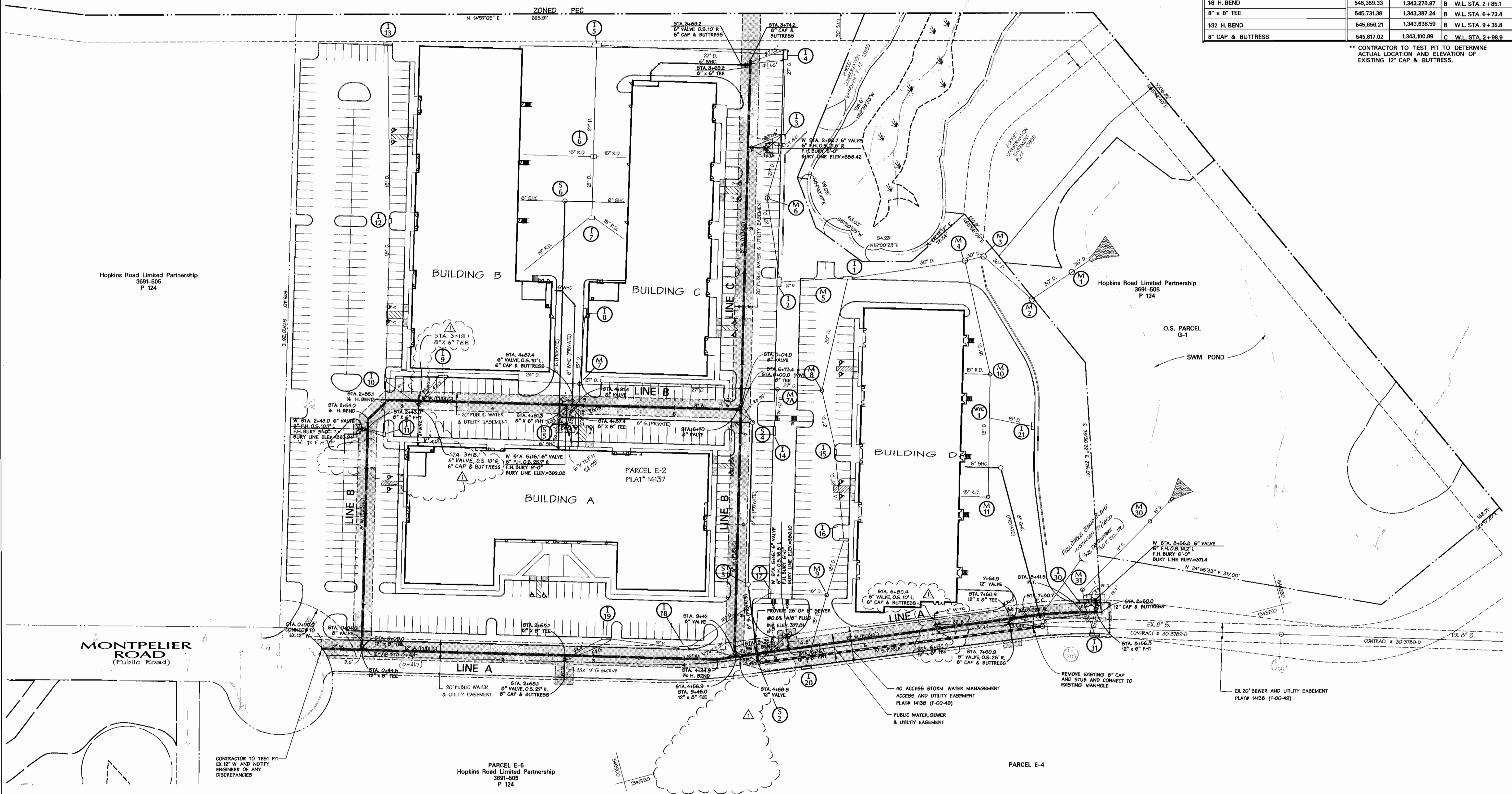
**Montpelier Research Park**  
 HOWARD COUNTY, MARYLAND  
 OWNER: HOPKINS ROAD LIMITED PARTNERSHIP SIA, Election District, 9030 RED BRANCH ROAD, SUITE 200, COLUMBIA, MD 21046  
 DEVELOPER: TRAMMELL CROW COMPANY, 6701 DEMOCRACY BLVD., SUITE 410, BETHESDA, MD 20817  
 CONTRACT NO. 34-3865-D

AS SHOWN  
 SHEET  
 1 OF 3

Johns Hopkins University  
Applied Physics Laboratory  
4000928  
P 289

ITEMS	COORDINATES		STATION
	NORTH	EAST	
EXIST. 12" CAP AT PROP. CONNECTION	**	**	A W.L. STA. 0+00.0
12" X 8" TEE	545,289.17	1,343,634.08	A W.L. STA. 0+44.6
132 H. BEND	545,633.14	1,343,645.93	A W.L. STA. 4+34.9
12" X 8" TEE	545,654.93	1,343,648.68	A W.L. STA. 4+56.9
12" P. C.	545,978.20	1,343,688.18	A W.L. STA. 7+80.7
12" P. T.	546,035.84	1,343,700.76	A W.L. STA. 8+41.5
12" CAP & BUTTRESS	546,057.10	1,343,706.18	A W.L. STA. 8+63.4
18 H. BEND	545,331.95	1,343,290.74	B W.L. STA. 2+54.0
18 H. BEND	545,359.33	1,343,275.97	B W.L. STA. 2+85.1
8" X 8" TEE	545,731.38	1,343,387.24	B W.L. STA. 6+73.4
132 H. BEND	545,656.21	1,343,638.59	B W.L. STA. 8+35.8
8" CAP & BUTTRESS	545,817.02	1,343,100.89	C W.L. STA. 2+88.9

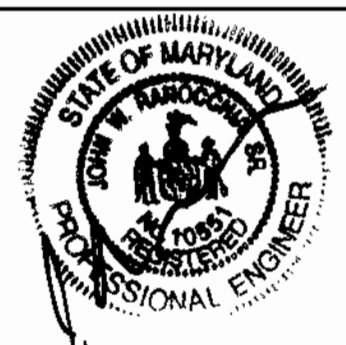
\*\* CONTRACTOR TO TEST PIT TO DETERMINE ACTUAL LOCATION AND ELEVATION OF EXISTING 12" CAP & BUTTRESS.



DEPARTMENT OF PUBLIC WORKS  
HOWARD COUNTY, MARYLAND

DEPARTMENT OF PLANNING & ZONING  
HOWARD COUNTY, MARYLAND

**DMW**  
Daft · McCune · Walker, Inc.  
A Team of Land Planners, Landscape Architects, Engineers, Surveyors & Environmental Professionals  
200 East Pennsylvania Avenue  
Towson, Maryland 21286  
410 296 3333  
Fax 296 4705



DESIGN BY:	PMW	REMOVE 8" S. THROUGH PARCELS E-4, E-5 RELOCATED WMC TO BLDGS 'B' & 'D'	10/30/00
DRAWN BY:	CW		
CHECKED BY:	JWR		
DATE:	7-13-00	AS-BUILT CONDITIONS ADDED TO RAW	4/30/01
BY NO.		REVISION	DATE

**WATER & SEWER PLAN**

600 SCALE MAP NO. 41 BLOCK NO. 17

**Montpelier Research Park**  
Office & Commercial Buildings  
Parcel E2 - Montpelier Research Park, 5th Election District, Howard County Maryland  
OWNER: HOPKINS ROAD LIMITED PARTNERSHIP 8030 RED BRANCH ROAD SUITE 200 - COLUMBIA, MD 21046  
DEVELOPER: TRAMMELL CROW COMPANY 6701 DEMOCRACY BLVD. SUITE 410-BETHESDA, MD 20817  
CONTRACT NO. 34-3865-D

SCALE  
1" = 50'  
SHEET  
2 OF 3

7-27-00  
CHIEF - BUREAU OF UTILITIES - DATE

CHIEF - DEVELOPMENT ENGINEERING DIVISION - DATE





# MONTPELIER RESEARCH PARK

PARCEL E2

## WATER AND SEWER CONSTRUCTION PLANS

Howard County, Maryland Department of Public Works

**GENERAL NOTES**

- APPROXIMATE LOCATION OF EXISTING MAINS ARE SHOWN. THE CONTRACTOR SHALL TAKE ALL NECESSARY PRECAUTIONS TO PROTECT EXISTING MAINS AND SERVICES AND MAINTAIN UNINTERRUPTED SUPPLY. ANY DAMAGE INCURRED SHALL BE REPAIRED IMMEDIATELY TO THE SATISFACTION OF THE ENGINEER AT THE CONTRACTOR'S EXPENSE.
- ALL HORIZONTAL CONTROLS ARE BASED ON MARYLAND STATE COORDINATES.
- ALL VERTICAL CONTROLS ARE BASED ON U.S.C.S. DATA.
- ALL PIPE ELEVATIONS SHOWN ARE INVERT ELEVATIONS.
- CLEAR ALL UTILITIES BY A MINIMUM OF 6" CLEAR ALL POLES BY 2'-0" MINIMUM OR TUNNEL AS REQUIRED. THE OWNER HAS CONTACTED THE UTILITY COMPANIES AND HAS MADE ARRANGEMENTS FOR BRACING OF POLES AS SHOWN ON THE DRAWINGS. IN THE EVENT THE CONTRACTOR'S WORK REQUIRES THE BRACING OF ADDITIONAL POLES, ANY COST INCURRED BY THE OWNER FOR BRACING OF ADDITIONAL POLES OR DAMAGES SHALL BE DEDUCTED FROM MONEY OWED THE CONTRACTOR. THE CONTRACTOR SHALL COORDINATE WITH THE UTILITY COMPANIES TO SCHEDULE THE BRACING OF THE POLES.
- FOR DETAILS NOT SHOWN ON THE DRAWINGS, AND FOR MATERIALS AND CONSTRUCTION METHODS, USE HOWARD COUNTY DESIGN MANUAL, VOLUME IV, STANDARD SPECIFICATIONS AND DETAILS FOR CONSTRUCTION. THE CONTRACTOR SHALL HAVE A COPY OF VOLUME IV ON THE JOB.
- WHERE TEST PITS HAVE BEEN MADE ON EXISTING UTILITIES, THEY ARE NOTED BY THE SYMBOL AT THE LOCATION OF THE TEST PIT. A NOTE OR NOTES CONTAINING THE RESULTS OF THE TEST PIT OR PITS IS INCLUDED ON THE DRAWINGS. EXISTING UTILITIES IN THE VICINITY OF THE PROPOSED WORK FOR WHICH TEST PITS HAVE NOT BEEN DUG SHALL BE VERIFIED BY THE CONTRACTOR TO HIS OWN SATISFACTION. ANY DAMAGE TO EXISTING FACILITIES DUE TO THE CONTRACTOR'S NEGLIGENCE SHALL BE REPAIRED AT THE CONTRACTOR'S EXPENSE.
- CONTRACTOR SHALL NOTIFY THE FOLLOWING UTILITIES OR AGENCIES AT LEAST FIVE WORKING DAYS BEFORE STARTING WORK SHOWN ON THESE PLANS:
  - STATE HIGHWAY ADMINISTRATION - (410) 531-5533
  - BALTIMORE GAS & ELECTRIC CO. - CONTRACTOR SERVICES - (410) 850-4620
  - BALTIMORE GAS & ELECTRIC UNDERGROUND DAMAGE CONTROL - (410) 291-4607
  - MSS UTILITY - 1-800-257-7777
  - COLORADO PIPELINE CO. - (410) 549-4120
  - BUREAU OF UTILITIES, HOWARD COUNTY DEPARTMENT OF PUBLIC WORKS - (410) 313-4900
  - BELL ATLANTIC - 1-800-446-5266
- TREES AND SHRUBS ARE TO BE PROTECTED FROM DAMAGE TO MAXIMUM EXTENT. TREES AND SHRUBS LOCATED WITHIN THE CONSTRUCTION STRIP ARE NOT TO BE REMOVED OR DAMAGED BY THE CONTRACTOR.
- CONTRACTOR SHALL REMOVE TREES, STUMPS AND ROOTS ALONG LINE OF EXCAVATION. PAYMENT FOR SUCH REMOVAL SHALL BE INCLUDED IN THE UNIT PRICE BID FOR CONSTRUCTION OF THE MAIN.
- GENERAL NOTES (SEE ATTACHED)
- THE CONTRACTOR SHALL NOTIFY THE BUREAU OF HIGHWAYS, HOWARD COUNTY, AT 410-313-2450 AT LEAST FIVE (5) WORKING DAYS BEFORE ANY OPEN CUT OF ANY COUNTY ROAD OR BORING/JACKING OPERATION IN COUNTY ROADS FOR LAYING WATER/SEWER MAINS OR HOUSE CONNECTIONS. THE APPROVAL OF THESE DRAWINGS WILL CONSTITUTE COMPLIANCE WITH DPW REQUIREMENTS PER SECTION 18.14(g) OF THE HOWARD COUNTY CODE.

**PART II - WATER**

- ALL WATER MAINS TO BE D.I.P. CLASS 52 UNLESS OTHERWISE NOTED.
- TOPS OF ALL WATER MAINS TO HAVE A MINIMUM OF 3'-1/2" COVER UNLESS OTHERWISE NOTED.
- VALVES ADJACENT TO TEES SHALL BE STRAPPED TO TEES.
- ALL FITTINGS SHALL BE BUTTRESSED OR ANCHORED WITH CONCRETE IN ACCORDANCE WITH THE STANDARD DETAILS UNLESS OTHERWISE PROVIDED FOR ON THE DRAWINGS.
- FIRE HYDRANTS SHALL BE SET TO THE BURY LINE ELEVATIONS SHOWN ON THE DRAWINGS. ALL FIRE HYDRANTS SHALL BE STRAPPED AND BUTTRESSED WITH CONCRETE IN ACCORDANCE WITH STANDARD DETAILS. SOIL AROUND THE FIRE HYDRANT SHALL BE COMPACTED IN ACCORDANCE WITH SECTION 1003 OF THE STANDARD SPECIFICATIONS.
- THE CONTRACTOR SHALL NOT OPERATE ANY WATER MAIN VALVES ON THE EXISTING WATER SYSTEM.
- ALL WATER HOUSE CONNECTIONS SHALL BE FOR INSIDE METER SETTING, UNLESS OTHERWISE NOTED ON THE PLANS OR IN THE SPECIFICATIONS.
- ALL D.I.P. FITTINGS SHALL BE IN ACCORDANCE WITH A.N.W.A. SPECIFICATION C-153 DUCTILE IRON COMPACT FITTINGS, 3 INCH THROUGH 12 INCH FOR WATER AND OTHER LIQUIDS.
- ALL EXISTING VALVES TO BE CLOSED WHEN CONNECTION TO THE SYSTEM IS MADE.

**PART II - SEWER**

- ALL SEWER MAINS SHALL BE P.V.C. OR D.I.P. CLASS 52 UNLESS OTHERWISE NOTED.
- THE CONTRACTOR SHALL PROVIDE A JOINT IN ALL SEWER MAINS WITHIN 2'-0" OF EXTERIOR MANHOLE WALL.
- ALL MANHOLES SHALL BE 4'-0" INSIDE DIAMETER UNLESS OTHERWISE NOTED.
- FORCE MAINS SHALL BE D.I.P. ONLY.
- MANHOLES SHOWN WITH 12" AND 16" WALLS ARE FOR BRICK MANHOLES ONLY.
- MANHOLES DESIGNATED W.T. IN PLAN AND PROFILE SHALL HAVE WATER-TIGHT FRAME AND COVERS, STANDARD DETAIL 05.52, WHERE WATER-TIGHT MANHOLE FRAME AND COVER IS USED, SET TOP OF FRAME 1'-6" ABOVE FINISHED GRADE UNLESS OTHERWISE NOTED ON THE DRAWINGS.
- HOUSE(S) WITH THE SYMBOL "C.N.S." INDICATES THAT CELLAR CANNOT BE SERVED.

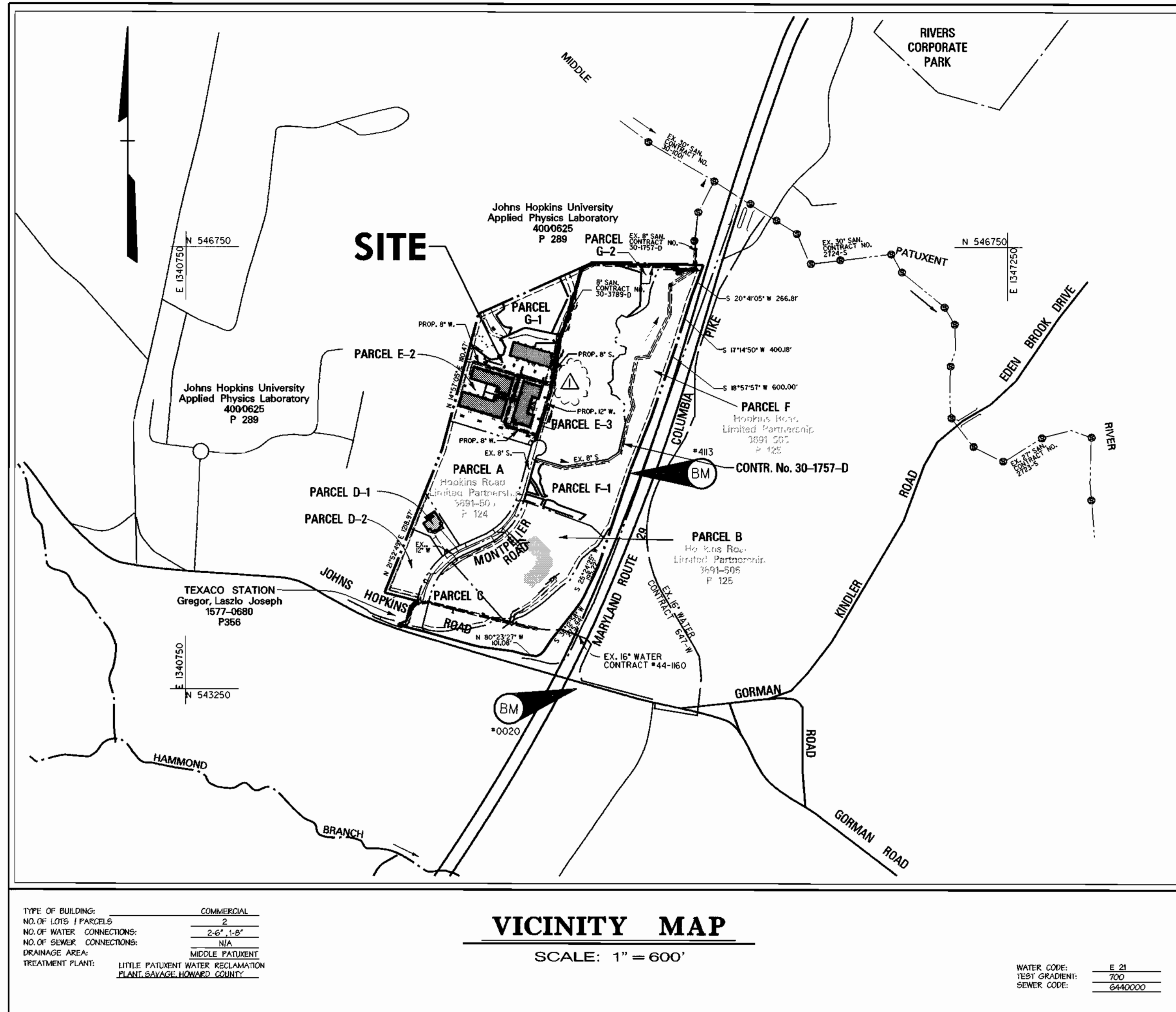
**BENCHMARK**

**DESCRIPTION**

- \*413  
N 544492.88  
E 134177.82  
ELEVATION = 391.65  
CONCRETE MONUMENT 4" WEST OF TOP OF BANK  
OFF SOUTH BOUND LANE OF MARYLAND ROUTE 29 AT SURFACE.
- \*0020  
N 543170.96  
E 1343822.16  
ELEVATION = 403.62  
STANDARD MBCS SURVEY DISC SET ON CONCRETE MONUMENT,  
FLUSH WITH THE GROUND.

QUANTITIES		AS-BUILT		
ITEMS	QUANTITIES ESTIMATED	QUANTITIES	TYPE	MANUFACTURER / SUPPLIER
12" D.I.P.	860 LF			
12" X 8" TEE	4	4	C152 T.J.	ATLANTIC STATES/A-1 PIPE.
12" X 6" TEE	3	3	C153 M.J.	TYLER PIPE/A-1 PIPE
8" X 8" TEE	1	1	C153 M.J.	TYLER PIPE/A-1 PIPE
8" D.I.P.	1320 LF			
8" VALVE	7	7	M.J.R.GATE	MUELLER/A-1 PIPE
12" VALVE	2	2	M.J.R.GATE	MUELLER/A-1 PIPE
12" 132 H BEND	1	1	O1 M.J.11/4	TYLER PIPE/A-1 PIPE
8" 132 H BEND	1	1	O1 M.J.11/4	TYLER PIPE/A-1 PIPE
8" 18 H BEND	2	2	O1 M.J.1/2	TYLER PIPE/A-1 PIPE
8" CAP	3	3	O1 M.J.2000	TYLER PIPE/A-1 PIPE
12" CAP	1	1	O1 M.J.5000	TYLER PIPE/A-1 PIPE
8" X 6" TEE	6	6	C153 M.J.	TYLER PIPE/A-1 PIPE
8" PVC SEWER	334 LF			
8" X 12" TYPE 'B' DROP MH	1	1	SDR-35	J-M MANUF/A-1 PIPE
				M.J. SLEEVE
				PRECAST
6" D.I.P.	130 LF			
6" CAP	4	4	C152 T.S.	ATLANTIC STATES/A-1 PIPE.
6" VALVE	9	9	O1 M.J.5000	TYLER PIPE/A-1 PIPE
6" FIRE HYDRANT	5	5	M.J.R.GATE	MUELLER/A-1 PIPE

NAME OF UTILITY CONTRACTOR: PAVEX  
SURVEY AND DRAFTING DIVISION AS-BUILT DATE:



SHEET INDEX	
SHEET No.	DESCRIPTION
1	COVER SHEET
2	WATER PLAN
3	WATER PROFILE

REVIEWED FOR NATURAL RESOURCE CONSERVATION SERVICE AND MEETS TECHNICAL REQUIREMENT  
*Cheyl Simmons* 8/4/00  
SIGNATURE DATE

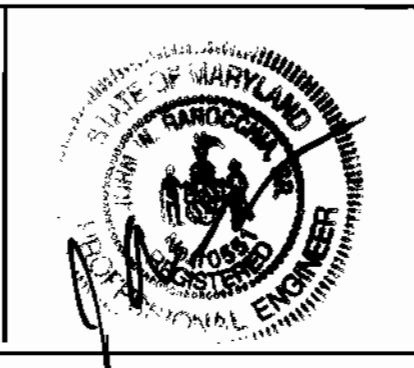
THIS DEVELOPMENT PLAN IS APPROVED FOR SOIL EROSION AND SEDIMENT CONTROL BY THE HOWARD COUNTY CONSERVATION DISTRICT.  
APPROVED: *John R. Roberts* 8/4/00  
HOWARD S.C.D. DATE

SEDIMENT CONTROL MEASURES WILL BE IMPLEMENTED IN ACCORDANCE WITH SECTION 219 OF THE SPECIFICATIONS AND SITE DEVELOPMENT PLAN SDP-00-112

DEPARTMENT OF PUBLIC WORKS  
HOWARD COUNTY, MARYLAND  
*Robert M. Bauman* 7-27-00  
CHIEF - BUREAU OF UTILITIES - DATE

DEPARTMENT OF PLANNING & ZONING  
HOWARD COUNTY, MARYLAND  
*John R. Roberts* 8/7/00  
CHIEF - DEVELOPMENT ENGINEERING DIVISION - DATE

**DMW**  
Daft · McCune · Walker, Inc.  
A Team of Land Planners, 200 East Pennsylvania Avenue  
Landscape Architects, Towson, Maryland 21286  
Engineers, Surveyors & Environmental Professionals 410 296 3333  
Fax 296 4705



DESIGN BY:	DMW	REVISED QUANTITIES	DATE
BIS			10/30/00
DRAWN BY:			
ADL			
CHECKED BY:			
JWR			
DATE:	K.C.I.	AS-BUILT CONDITIONS ADDED TO PLAN	4/30/01
7-13-00	BY NO.	REVISION	DATE

600 SCALE MAP NO. 41 BLOCK NO. 17

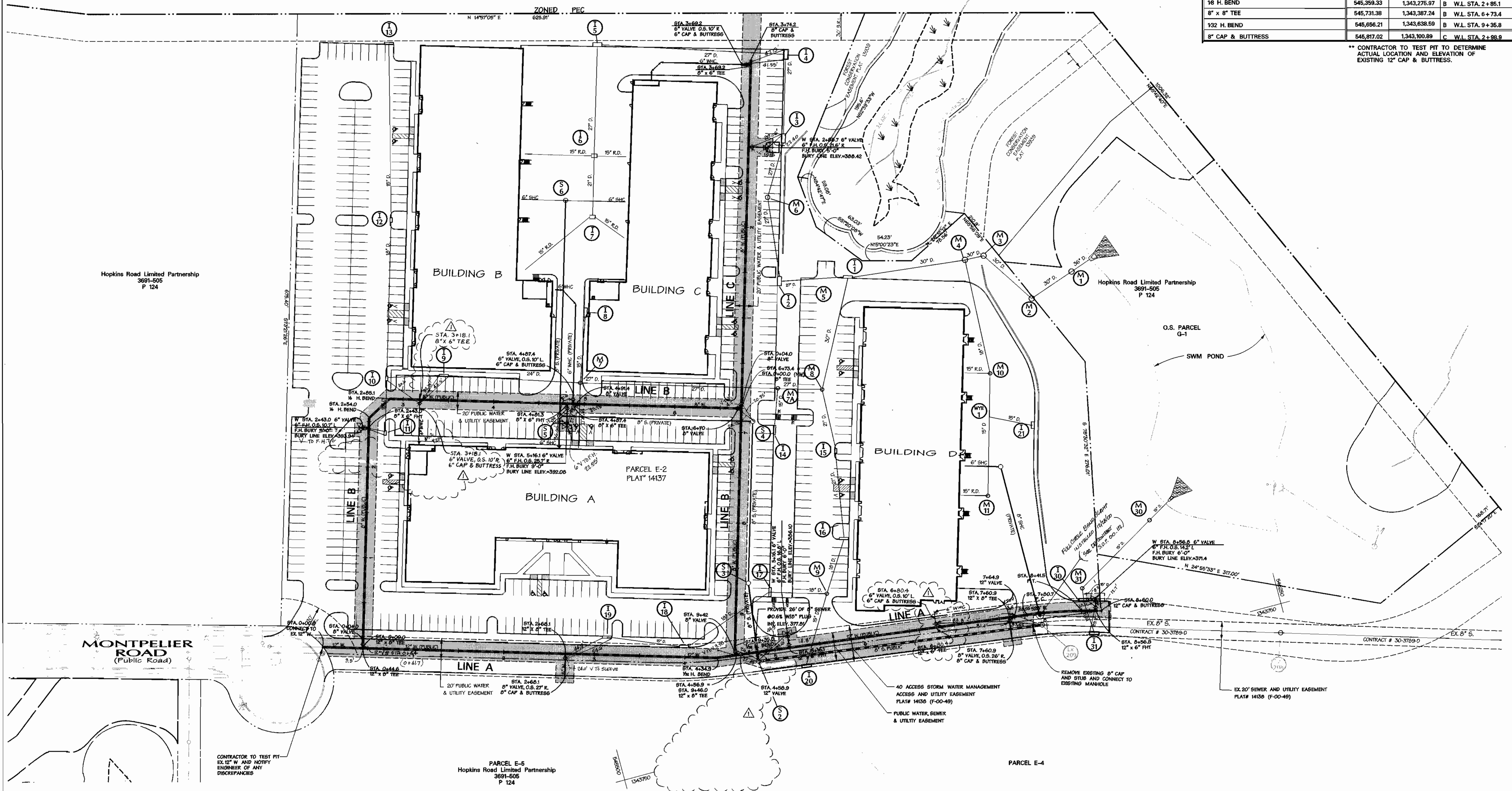
**Montpelier Research Park**  
HOWARD COUNTY, MARYLAND  
OWNER: HOPKINS ROAD LIMITED PARTNERSHIP 5th Election District  
9030 RED BRANCH ROAD, SUITE 200 COLUMBIA, MD 21046  
DEVELOPER: TRAMMELL CROW COMPANY  
6701 DEMOCRACY BLVD, SUITE 410, BETHESDA, MD 20817  
CONTRACT NO. 34-3865-D

AS SHOWN SHEET 1 OF 3

Johns Hopkins University  
Applied Physics Laboratory  
4000625  
P 289

ITEMS	COORDINATES		STATION
	NORTH	EAST	
EXIST. 12" CAP AT PROP. CONNECTION	**	**	A W.L. STA. 0+00.0
12" X 8" TEE	545,259.17	1,343,534.08	A W.L. STA. 0+44.6
132 H. BEND	545,633.14	1,343,645.93	A W.L. STA. 4+34.9
12" X 8" TEE	545,654.93	1,343,648.68	A W.L. STA. 4+56.9
12" P. C.	545,976.20	1,343,689.18	A W.L. STA. 7+80.7
12" P. T.	546,035.84	1,343,700.76	A W.L. STA. 8+41.5
12" CAP & BUTTRESS	546,067.10	1,343,706.18	A W.L. STA. 8+63.4
18 H. BEND	545,331.95	1,343,290.74	B W.L. STA. 2+54.0
18 H. BEND	545,359.33	1,343,275.97	B W.L. STA. 2+85.1
8" X 8" TEE	545,731.38	1,343,387.24	B W.L. STA. 6+73.4
132 H. BEND	545,656.21	1,343,638.59	B W.L. STA. 9+35.8
8" CAP & BUTTRESS	545,817.02	1,343,100.89	C W.L. STA. 2+88.9

\*\* CONTRACTOR TO TEST PIT TO DETERMINE ACTUAL LOCATION AND ELEVATION OF EXISTING 12" CAP & BUTTRESS.



DEPARTMENT OF PUBLIC WORKS  
HOWARD COUNTY, MARYLAND

DEPARTMENT OF PLANNING & ZONING  
HOWARD COUNTY, MARYLAND

**DMW**  
Daft · McCune · Walker, Inc.  
A Team of Land Planners,  
Landscape Architects,  
Engineers, Surveyors &  
Environmental Professionals  
200 East Pennsylvania Avenue  
Towson, Maryland 21286  
410 296 3333  
Fax 296 4705



DESIGN BY:	DMW	REMOVE 8" S. THROUGH PARCELS E-4, E-5 RELOCATED WMC TO BLDG 'B' & 'D'	10/30/00
DRAWN BY:	CW		
CHECKED BY:	JWR		
DATE:	7-13-00	ASBUILT CONDITIONS ADDED TO PLAN	4/30/01
BY NO.	K.C.I.		

**WATER & SEWER PLAN**

600 SCALE MAP NO. 41 BLOCK NO. 17

**Montpelier Research Park**  
Office & Commercial Buildings  
Parcel E2 - Montpelier Research Park, 5th Election District, Howard County Maryland  
OWNER: HOPKINS ROAD LIMITED PARTNERSHIP 3030 RED BRANCH ROAD SUITE 200 - COLUMBIA, MD 21046  
DEVELOPER: TRAMMELL CROW COMPANY 6701 DEMOCRACY BLVD. SUITE 410-BETHESDA, MD 20817  
CONTRACT NO. 34-3865-D

SCALE  
1" = 50'  
SHEET  
2 OF 3

7-27-00  
CHIEF - BUREAU OF UTILITIES - DATE

CHIEF - DEVELOPMENT ENGINEERING DIVISION - DATE

