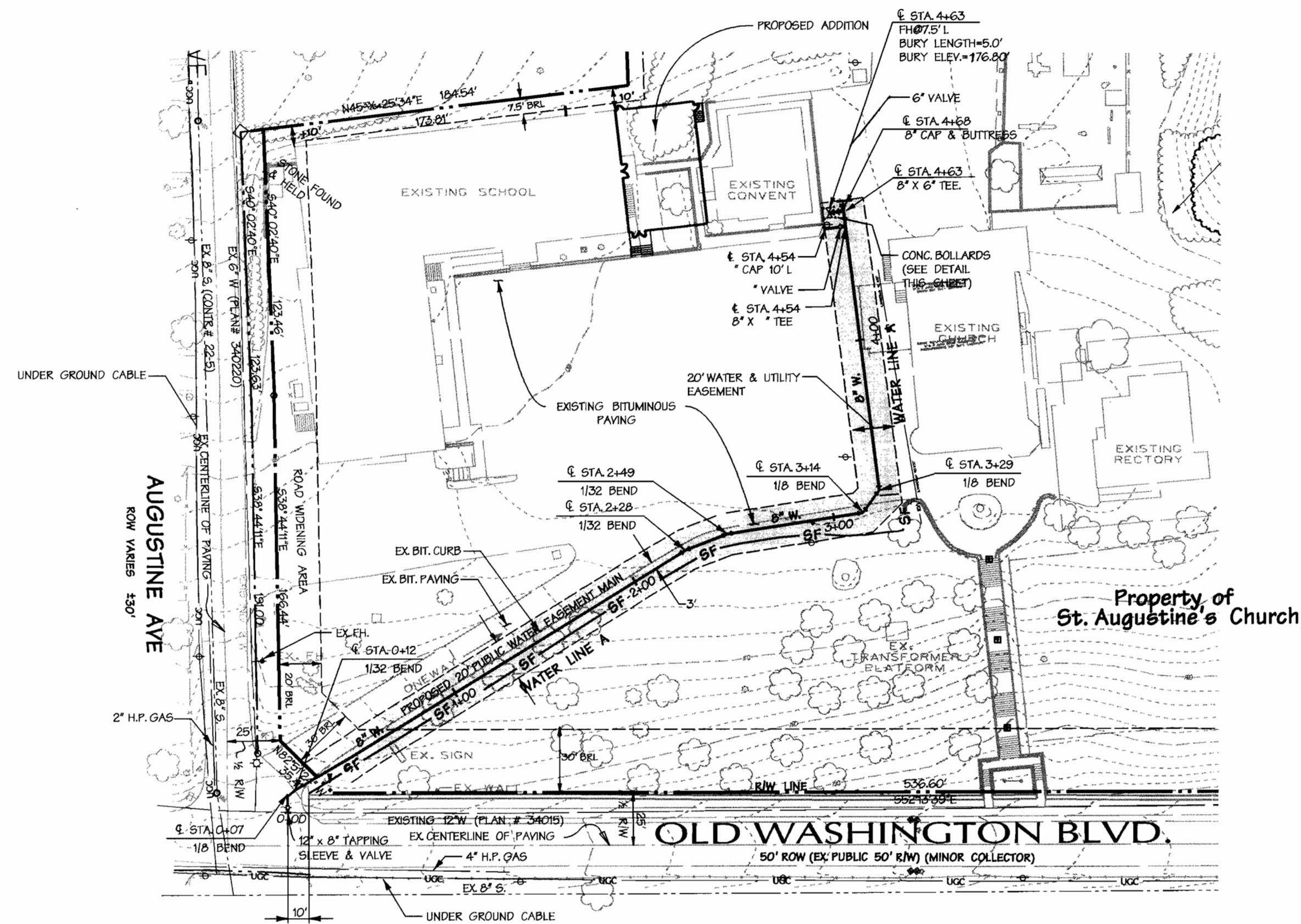
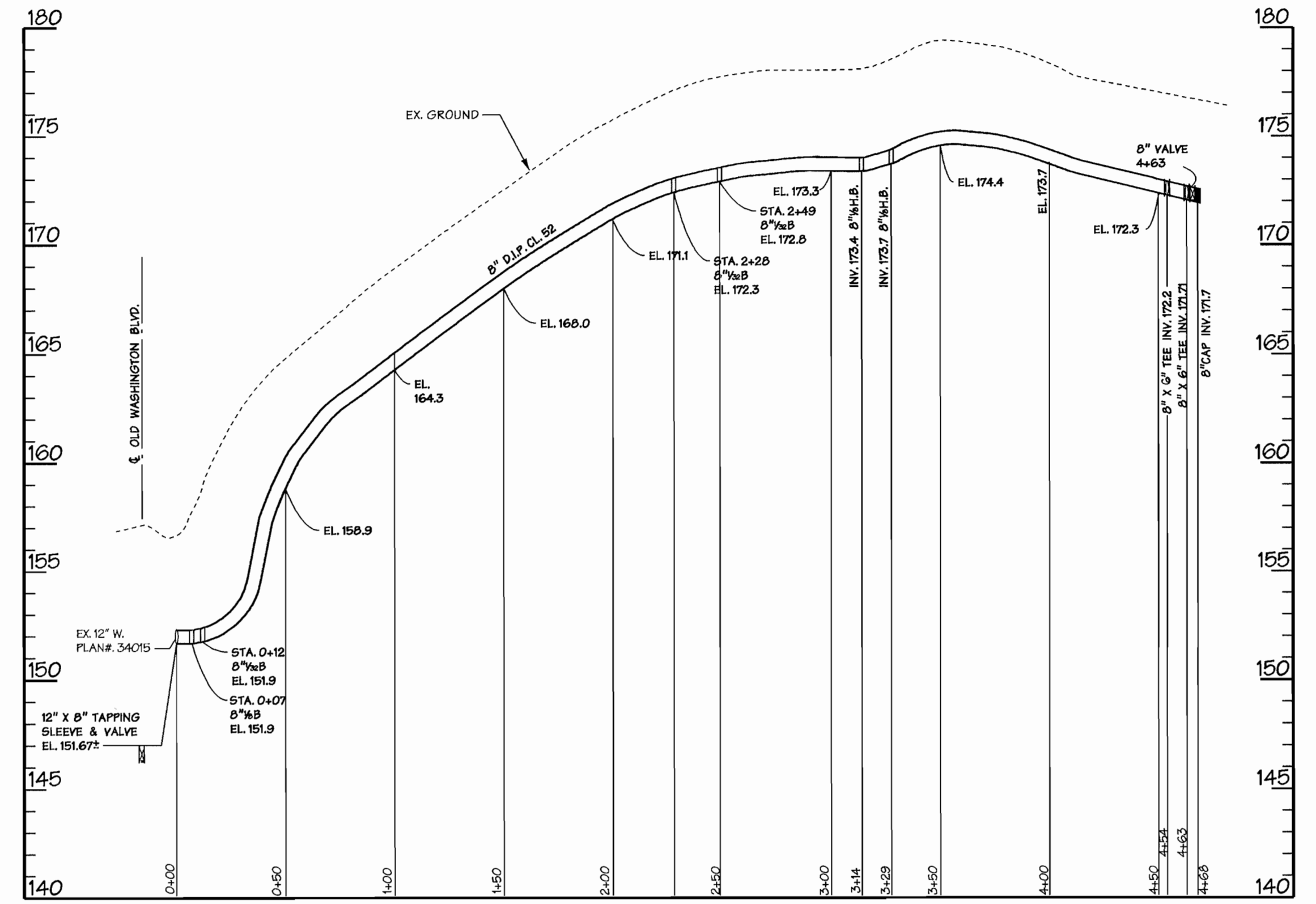


APPURTENANCE SCHEDULE				
WATER LINE	APPURTENANCE	NORTHING	EASTING	W.L. STATION
'A'	12" X 8" TAPPING SLEEVE & VALVE	SEE PLAN	SEE PLAN	STA. 0+00
	8" 18 H.B.	562,340.5	1,392,776.7	STA. 0+07
	8" 132 H.B.	562,344.8	1,392,777.6	STA. 0+12
	8" 132 H.B.	562,547.6	1,392,854.2	STA. 2+28
	8" 132 H.B.	562,565.9	1,392,865.2	STA. 2+49
	8" 18 H.B.	562,613.2	1,392,909.7	STA. 3+14
	8" 18 H.B.	562,626.6	1,392,911.2	STA. 3+29
	8" X 6" FHT TEE.	562,686.7	1,392,849.0	STA. 4+63
	FIRE HYDRANT	562,697.3	1,392,859.6	STA. 4+17 15' RT.
	8" X 6" TEE	562,715.8	1,392,819.9	STA. 4+54
	6" CAP	562,708.6	1,392,812.9	STA. 4+54 10' LT.
	8" CAP	562,723.1	1,392,812.6	STA. 4+68

CONTRACTOR TO PROVIDE WATER SERVICE TO THE PROPOSED ADDITION AT THE LOCATION AND OF THE SIZE SPECIFIED ON MECHANICAL ENGINEER'S DRAWINGS.



PLAN SCALE: 1"=50'



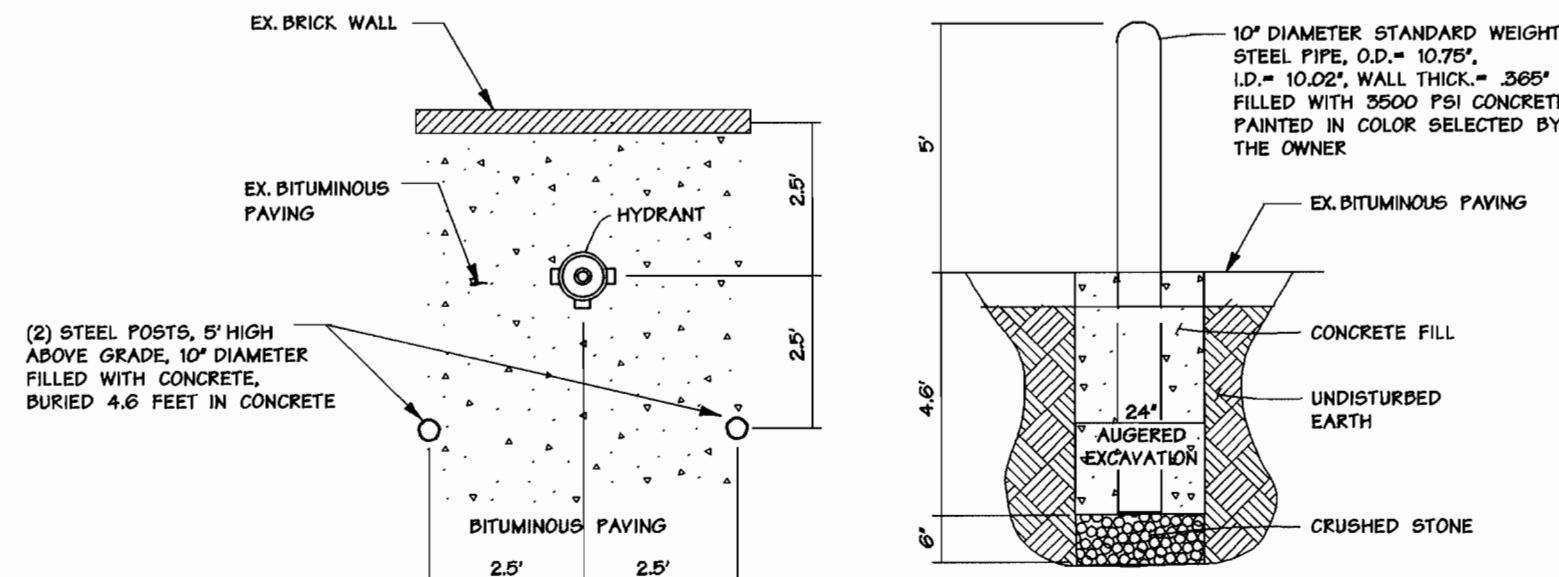
8" WATERLINE PROFILE

SCALE: 1"=50' HORIZ
1"=5' VERT.

ANY EXCAVATED TRENCH MATERIAL WILL BE PLACED ON UPPER SIDE OF WATER LINE TRENCH DURING CONSTRUCTION.

ANY SILT FENCE REMOVED DURING WATER CONSTRUCTION WILL BE REPLACED AT THE END OF THE DAY.

THE CONTRACTOR IS TO EXERCISE ALL DUE CARE IN ORDER TO LIMIT DRAINAGE TO EXISTING PAVING AND CURBS. PAVING CUTS ARE TO BE REPAIRED IN ACCORDANCE WITH STANDARD DETAIL G.401



Bollard Detail

Not To Scale

SPECIFICATIONS: HOWARD COUNTY (LATEST)
CONCRETE: SHA MIX NO. 3, 10" 3000 PSI
STEEL: ASTM A 36

DEVELOPER'S CERTIFICATION:

"I/WE CERTIFY THAT ALL DEVELOPMENT AND CONSTRUCTION WILL BE DONE ACCORDING TO THIS PLAN, AND THAT ANY RESPONSIBLE PERSONNEL INVOLVED IN THE CONSTRUCTION PROJECT WILL HAVE A CERTIFICATE OF ATTENDANCE AT A DEPARTMENT OF THE ENVIRONMENT APPROVED TRAINING PROGRAM FOR THE CONTROL OF SEDIMENT AND EROSION BEFORE BEGINNING THE PROJECT. I ALSO AUTHORIZE PERIODIC ON-SITE INSPECTION BY THE HOWARD SOIL CONSERVATION DISTRICT."

SIGNATURE OF DEVELOPER _____ DATE _____
PRINT NAME BELOW SIGNATURE

ENGINEER'S CERTIFICATION:

"I CERTIFY THAT THIS PLAN FOR EROSION AND SEDIMENT CONTROL REPRESENTS A PRACTICAL AND WORKABLE PLAN BASED ON MY PERSONAL KNOWLEDGE OF THE SITE CONDITIONS AND THAT IT WAS PREPARED IN ACCORDANCE WITH THE REQUIREMENTS OF THE HOWARD SOIL CONSERVATION DISTRICT."

SIGNATURE OF ENGINEER _____ DATE _____
PRINT NAME BELOW SIGNATURE

REVIEWED FOR HOWARD S.C.D. AND MEETS TECHNICAL REQUIREMENTS

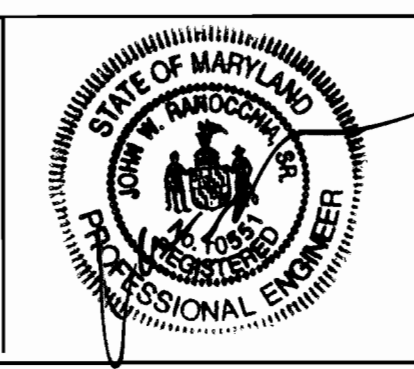
John R. Rhoads 7/3/16
U.S. NATURAL RESOURCE CONSERVATION SERVICE
DATE
THIS DEVELOPMENT PLAN IS APPROVED FOR EROSION AND SEDIMENT CONTROL BY THE HOWARD SOIL CONSERVATION DISTRICT.
John R. Rhoads 7/3/16
HOWARD S.C.D. DATE

Mon Jun 19 10:27:10 2006 n:\199401\199401.dwg

DEPARTMENT OF PUBLIC WORKS
HOWARD COUNTY, MARYLAND
John R. Rhoads 6-22-00
CHIEF - BUREAU OF UTILITIES - DATE

DEPARTMENT OF PLANNING & ZONING
HOWARD COUNTY, MARYLAND
John R. Rhoads 7/5/16
CHIEF - DEVELOPMENT ENGINEERING DIVISION - DATE

DMW
Daft · McCune · Walker, Inc.
A Team of Land Planners, Landscape Architects, Engineers, Surveyors & Environmental Professionals
200 East Pennsylvania Avenue
Towson, Maryland 21286
410 296 3333
Fax 296 4705



DESIGN BY:	BIS				
DRAWN BY:	ADL				
CHECKED BY:	JWR				
DATE:	6-19-00				
BY	NO.	REVISION	DATE		

PLAN & WATER PROFILE
600 SCALE MAP NO. 41 BLOCK NO. 17

St. Augustine Catholic Church
HOWARD COUNTY MARYLAND
SCALE 1"=50'
SHEET 2 OF 3
CONTRACT NO. 44-3864-D

QUANTITIES				
ITEMS	QUANTITIES ESTIMATED	AS-BUILT		
		QUANTITIES	TYPE	MANUFACTURER / SUPPLIER
8" D.I.P.	471 LF	468.0	CL-52	GRIFFIN PIPE PRODUCTS
6" D.I.P.	17.5 LF	17.5	CL-52	" " "
18 H.B.	3 EA.	3.0EA	DI 350	UNION FOUNDRY
132 H.B.	3 EA.	---	---	---
8 X 6 FHT	1 EA.	1.0EA	DI 350	UNION FOUNDRY
12 X 8 TAPPING SLEEVE & VALVE	1 EA.	1.0EA	DI 350	MUELLER CO.
8" VALVE	1 EA.	1.0EA	GATE	" "
4" D.I.P.	10 LF	---	---	---
6" VALVE	2EA.	2.0EA.	GATE	MUELLER CO.
6" FIRE HYDRANT	1 EA.	1.0EA	A423	MUELLER CO.
6" CAP	1 EA.	1.0EA	DI 350	UNION FOUNDRY
8" CAP	1 EA.	1.0EA	DI 350	" "
8" X 6" TEE	1 EA.	1.0EA	DI 350	" "
NAME OF UTILITY CONTRACTOR:				
SURVEY AND DRAFTING DIVISION AS-BUILT DATE:				

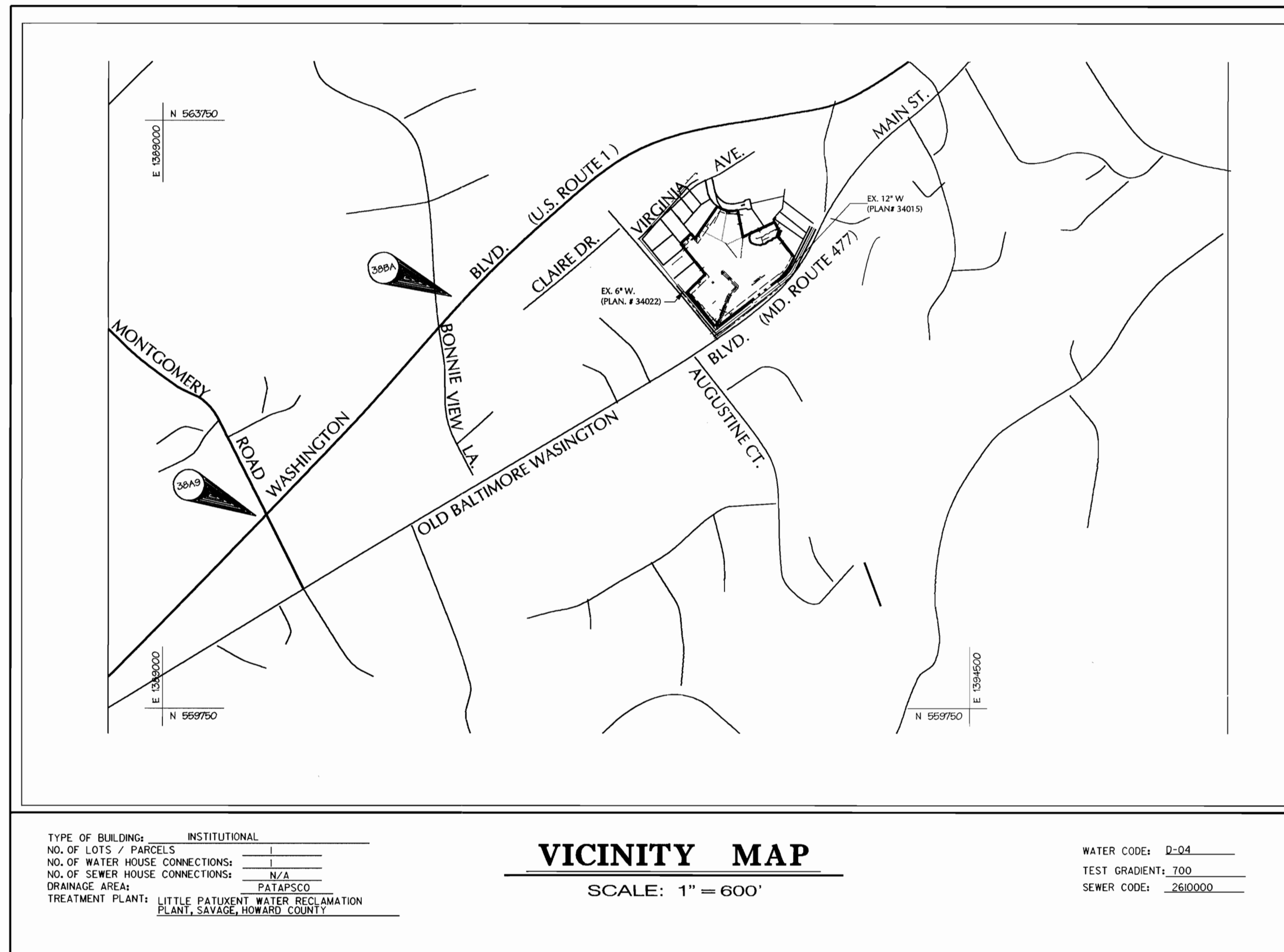
St. Augustine Catholic Church Water Plan

Contract No. 44-3864-D
 Howard County, Maryland Department of Public Works

GENERAL NOTES

- ### GENERAL NOTES
- APPROXIMATE LOCATION OF EXISTING MAINS ARE SHOWN. THE CONTRACTOR SHALL TAKE ALL NECESSARY PRECAUTIONS TO PROTECT EXISTING MAINS AND SERVICES AND MAINTAIN UNINTERRUPTED SUPPLY. ANY DAMAGE INCURRED SHALL BE REPAIRED IMMEDIATELY TO THE SATISFACTION OF THE ENGINEER AT THE CONTRACTOR'S EXPENSE.
 - ALL HORIZONTAL CONTROLS ARE BASED ON MARYLAND STATE COORDINATES.
 - ALL VERTICAL CONTROLS ARE BASED ON U.S.G.S. DATA.
 - ALL PIPE ELEVATIONS SHOWN ARE INVERT ELEVATIONS.
 - CLEAR ALL UTILITIES BY A MINIMUM OF 6". CLEAR ALL POLES BY 2'-0" MINIMUM OR TUNNEL AS REQUIRED. THE OWNER HAS CONTACTED THE UTILITY COMPANIES AND HAS MADE ARRANGEMENTS FOR BRACING OF POLES AS SHOWN ON THE DRAWINGS. IN THE EVENT THE CONTRACTOR'S WORK REQUIRES THE BRACING OF ADDITIONAL POLES, ANY COST INCURRED BY THE OWNER FOR BRACING OF ADDITIONAL POLES OR DAMAGES SHALL BE DEDUCTED FROM MONEY OWED THE CONTRACTOR. THE CONTRACTOR SHALL COORDINATE WITH THE UTILITY COMPANIES TO SCHEDULE THE BRACING OF THE POLES.
 - FOR DETAILS NOT SHOWN ON THE DRAWINGS, AND FOR MATERIALS AND CONSTRUCTION METHODS, USE HOWARD COUNTY DESIGN MANUAL, VOLUME IV, STANDARD SPECIFICATIONS AND DETAILS FOR CONSTRUCTION. THE CONTRACTOR SHALL HAVE A COPY OF VOLUME IV ON THE JOB.
 - WHERE TEST PITS HAVE BEEN MADE ON EXISTING UTILITIES, THEY ARE NOTED BY THE SYMBOL AT THE LOCATION OF THE TEST PIT. A NOTE OR NOTES CONTAINING THE RESULTS OF THE TEST PIT OR PITS IS INCLUDED ON THE DRAWINGS. EXISTING UTILITIES IN THE VICINITY OF THE PROPOSED WORK FOR WHICH TEST PITS HAVE NOT BEEN DUG SHALL BE VERIFIED BY THE CONTRACTOR TO HIS OWN SATISFACTION. ANY DAMAGE TO EXISTING FACILITIES DUE TO THE CONTRACTOR'S NEGLIGENCE SHALL BE REPAIRED AT THE CONTRACTOR'S EXPENSE.
 - CONTRACTOR SHALL NOTIFY THE FOLLOWING UTILITIES OR AGENCIES AT LEAST FIVE WORKING DAYS BEFORE STARTING WORK SHOWN ON THESE PLANS:
 STATE HIGHWAY ADMINISTRATION - (410) 531-5533
 BALTIMORE GAS & ELECTRIC CO. - CONTRACTOR SERVICES - (410) 850-4620
 BALTIMORE GAS & ELECTRIC CO. UNDERGROUND DAMAGE CONTROL - (410) 291-4607
 MISS UTILITY - 1-800-257-7777
 COLONIAL PIPELINE CO. - (410) 549-4120
 BUREAU OF UTILITIES, HOWARD COUNTY DEPARTMENT OF PUBLIC WORKS - (410) 313-4900
 BELL ATLANTIC - 1-800-446-5266
 - TREES AND SHRUBS ARE TO BE PROTECTED FROM DAMAGE TO MAXIMUM EXTENT. TREES AND SHRUBS LOCATED WITHIN THE CONSTRUCTION STRIP ARE NOT TO BE REMOVED OR DAMAGED BY THE CONTRACTOR.
 - CONTRACTOR SHALL REMOVE TREES, STUMPS AND ROOTS ALONG LINE OF EXCAVATION. PAYMENT FOR SUCH REMOVAL SHALL BE INCLUDED IN THE UNIT PRICE BID FOR CONSTRUCTION OF THE MAIN.
 - GENERAL NOTES (SEE ATTACHED)
 - THE CONTRACTOR SHALL NOTIFY THE BUREAU OF HIGHWAYS, HOWARD COUNTY, AT 410-313-2450 AT LEAST FIVE (5) WORKING DAYS BEFORE ANY OPEN CUT OF ANY COUNTY ROAD OR BORING/JACKING OPERATION COUNTY ROADS OR LAYING WATER/SEWER MAINS OR HOUSE CONNECTIONS. THE APPROVAL OF THESE DRAWINGS WILL CONSTITUTE COMPLIANCE WITH DPW REQUIREMENTS PER SECTION 18.14(d) OF THE HOWARD COUNTY CODE.

SHEET INDEX	
SHEET No.	DESCRIPTION
1	COVER SHEET
2	PLAN & PROFILE
3	EROSION AND SEDIMENT CONTROL DETAILS



REVIEWED FOR NATURAL RESOURCE CONSERVATION SERVICE AND MEETS TECHNICAL REQUIREMENT

Chris Summers 7/13/00
 SIGNATURE DATE

THIS DEVELOPMENT PLAN IS APPROVED FOR EROSION AND SEDIMENT CONTROL BY THE HOWARD COUNTY CONSERVATION DISTRICT

John K. Robertson 7/13/00
 APPROVED DATE
 HOWARD S.C.D.

SEDIMENT CONTROL MEASURES WILL BE IMPLEMENTED IN ACCORDANCE WITH SECTION 219 OF THE SPECIFICATIONS AND AS SHOWN ON THIS CONTRACT.

DEPARTMENT OF PUBLIC WORKS
 HOWARD COUNTY, MARYLAND

DEPARTMENT OF PLANNING & ZONING
 HOWARD COUNTY, MARYLAND

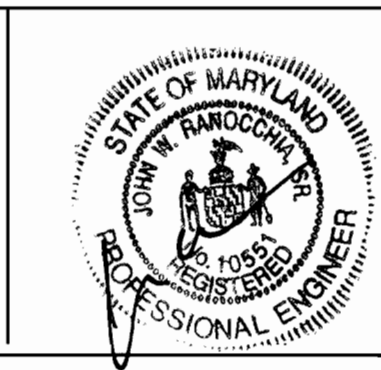
Robert J. ... 6-22-00
 CHIEF - BUREAU OF UTILITIES - DATE

John ... 7/5/00
 CHIEF - DEVELOPMENT ENGINEERING DIVISION - DATE

DMW
 Daft · McCune · Walker, Inc.

A Team of Land Planners, Landscape Architects, Engineers, Surveyors & Environmental Professionals

200 East Pennsylvania Avenue
 Towson, Maryland 21286
 410 296 3333
 Fax 296 4705



DESIGN BY:	BIS		
DRAWN BY:	ADL		
CHECKED BY:	JWR		
DATE:	6-19-00	BY NO.	KCI 1
		REVISION	AS-BUILT CONDITIONS ADDED TO PLAN
		DATE	12/16/00

COVER SHEET

600 SCALE MAP NO. 41 BLOCK NO. 17

St. Augustine Catholic Church
 HOWARD COUNTY MARYLAND

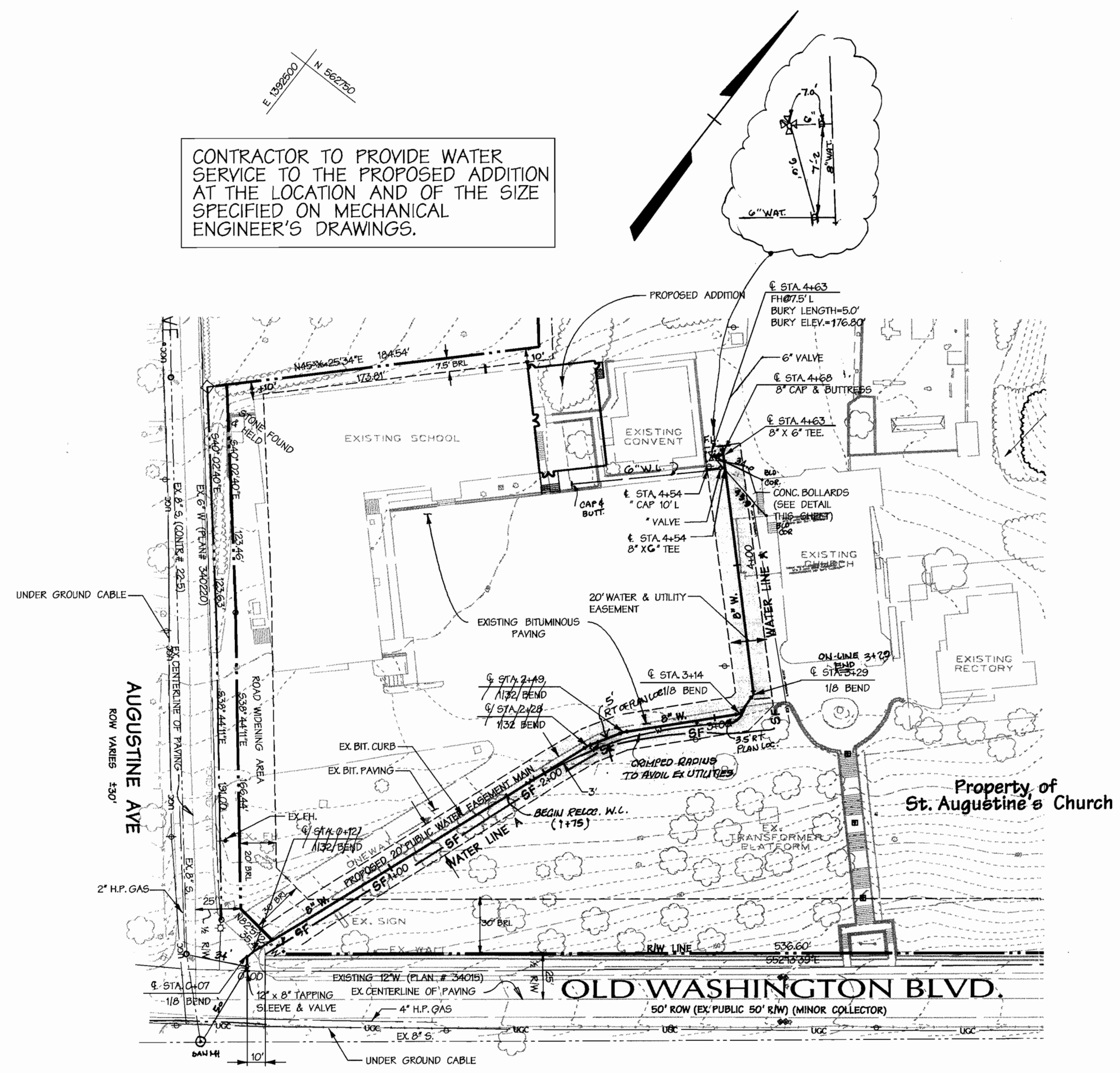
CONTRACT NO. 44-3864-D

SCALE
1" = 50'

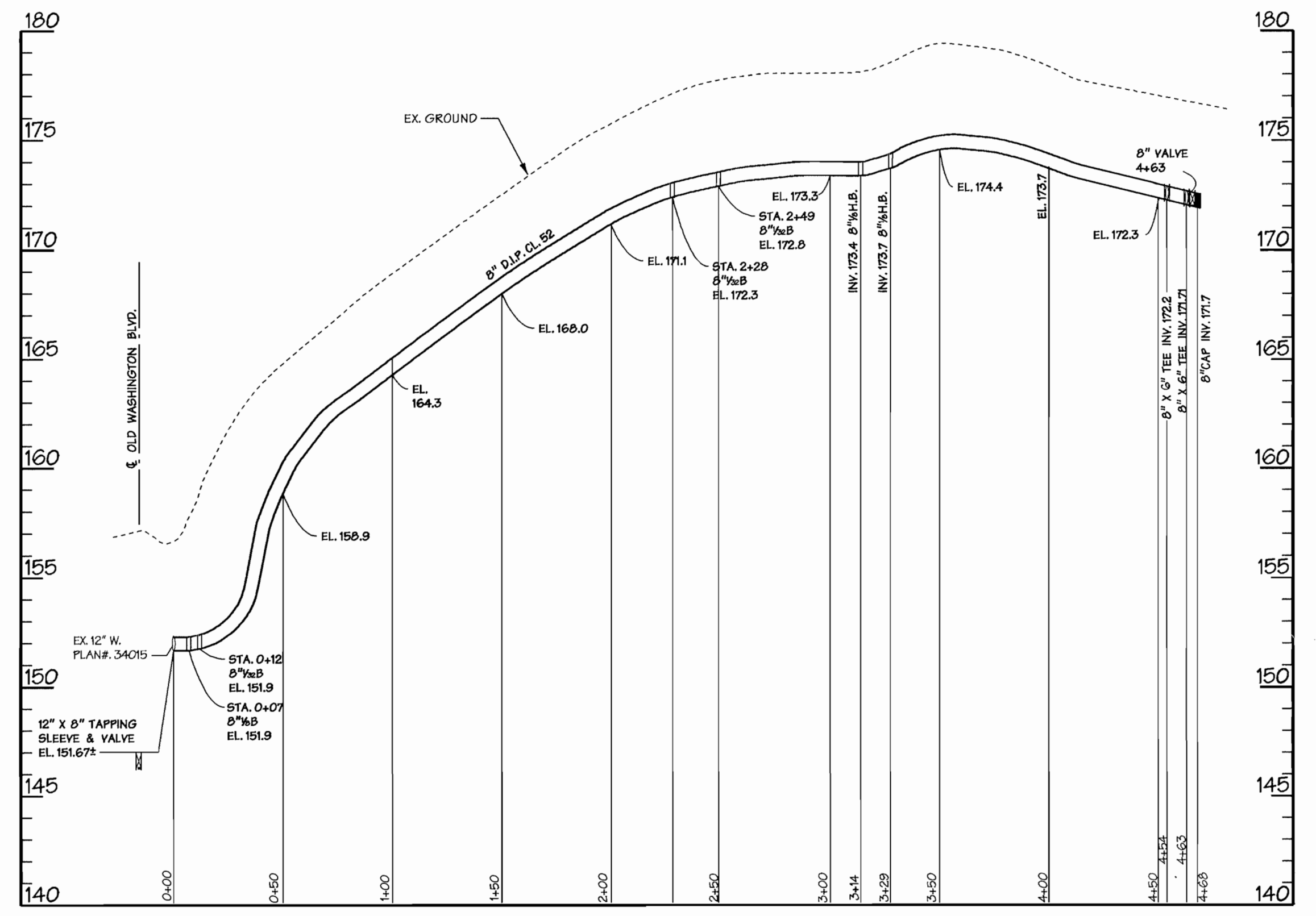
SHEET
1 OF 3

APPURTENANCE SCHEDULE				
WATER LINE	APPURTENANCE	NORTHING	EASTING	W.L. STATION
'A'	12" X 8" TAPPING SLEEVE & VALVE	SEE PLAN	SEE PLAN	STA. 0+00
	8" 18 H.B.	562,340.5	1,392,776.7	STA. 0+07
	8" 132 H.B.	562,344.8	1,392,777.6	STA. 0+12
	8" 132 H.B.	562,547.6	1,392,854.2	STA. 2+28
	8" 132 H.B.	562,565.9	1,392,865.2	STA. 2+49
	8" 18 H.B.	562,613.2	1,392,909.7	STA. 3+14
	8" 18 H.B.	562,626.6	1,392,911.2	STA. 3+29
	8" X 6" FHT TEE	562,686.7	1,392,849.0	STA. 4+63
	FIRE HYDRANT	562,697.3	1,392,859.6	STA. 4+17 15' RT.
	8" X 6" TEE	562,715.8	1,392,819.9	STA. 4+54
6" CAP	562,708.6	1,392,812.9	STA. 4+54 10' LT.	
8" CAP	562,723.1	1,392,812.6	STA. 4+68	

CONTRACTOR TO PROVIDE WATER SERVICE TO THE PROPOSED ADDITION AT THE LOCATION AND OF THE SIZE SPECIFIED ON MECHANICAL ENGINEER'S DRAWINGS.

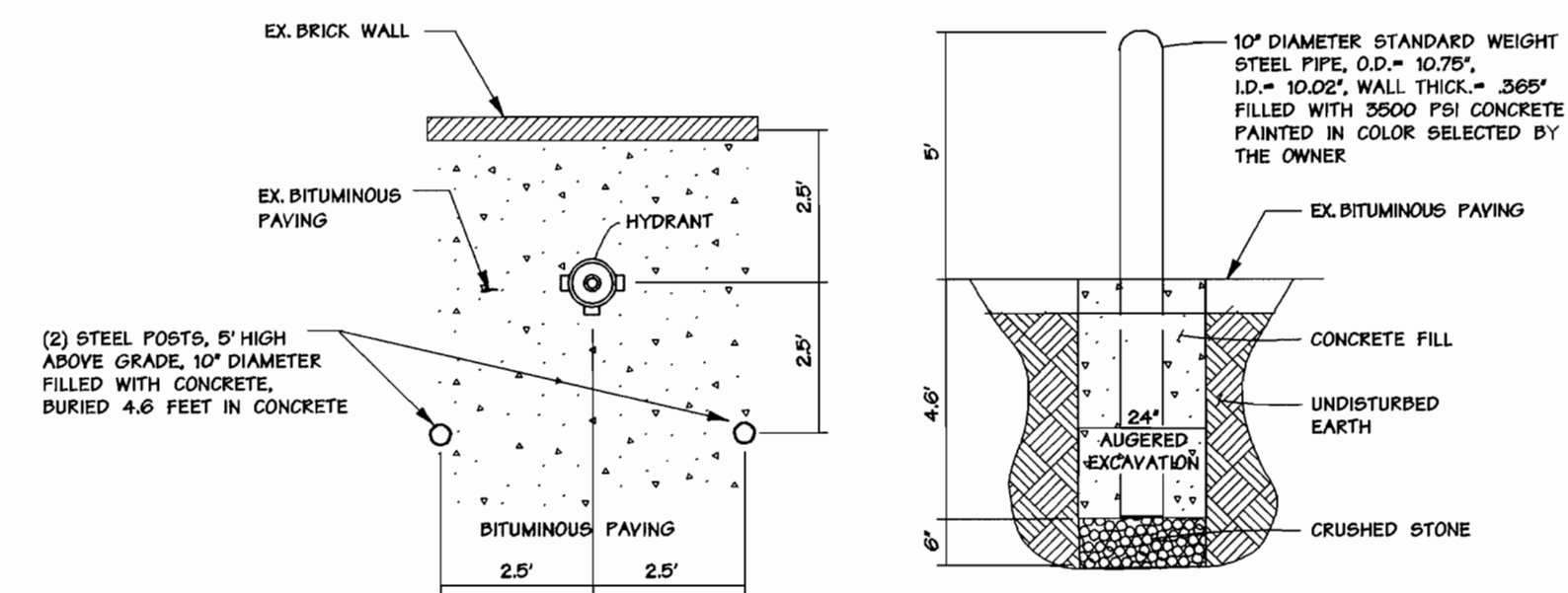


PLAN SCALE: 1"=50'



8" WATERLINE PROFILE
SCALE: 1"=50' HORIZ.
1"=6' VERT.

ANY EXCAVATED TRENCH MATERIAL WILL BE PLACED ON UPPER SIDE OF WATER LINE TRENCH DURING CONSTRUCTION.
ANY SILL FENCE REMOVED DURING WATER CONSTRUCTION WILL BE REPLACED AT THE END OF THE DAY.
THE CONTRACTOR IS TO EXERCISE ALL DUE CARE IN ORDER TO LIMIT DRAINAGE TO EXISTING PAVING AND CURBS. PAVING CUTS ARE TO BE REPAIRED IN ACCORDANCE WITH STANDARD DETAIL G.403



Bollard Detail Not To Scale

DEVELOPER'S CERTIFICATION:
"I/WE CERTIFY THAT ALL DEVELOPMENT AND CONSTRUCTION WILL BE DONE ACCORDING TO THIS PLAN, AND THAT ANY RESPONSIBLE PERSONNEL INVOLVED IN THE CONSTRUCTION PROJECT WILL HAVE A CERTIFICATE OF ATTENDANCE AT A DEPARTMENT OF THE ENVIRONMENT APPROVED TRAINING PROGRAM FOR THE CONTROL OF SEDIMENT AND EROSION BEFORE BEGINNING THE PROJECT. I/ALSO AUTHORIZE PERIODIC ON-SITE INSPECTION BY THE HOWARD SOIL CONSERVATION DISTRICT."
SIGNATURE OF DEVELOPER: _____ DATE: _____
PRINT NAME BELOW SIGNATURE: _____

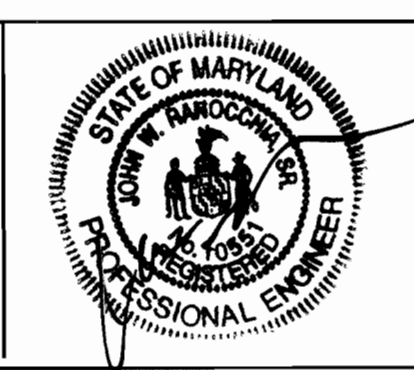
ENGINEER'S CERTIFICATION:
"I CERTIFY THAT THIS PLAN FOR EROSION AND SEDIMENT CONTROL REPRESENTS A PRACTICAL AND WORKABLE PLAN BASED ON MY PERSONAL KNOWLEDGE OF THE SITE CONDITIONS AND THAT IT WAS PREPARED IN ACCORDANCE WITH THE REQUIREMENTS OF THE HOWARD SOIL CONSERVATION DISTRICT."
SIGNATURE OF ENGINEER: _____ DATE: _____
PRINT NAME BELOW SIGNATURE: _____

REVIEWED FOR HOWARD S.C.D. AND MEETS TECHNICAL REQUIREMENTS
Chief Designer 7/13/06
U.S. NATURAL RESOURCE CONSERVATION SERVICE
THIS DEVELOPMENT PLAN IS APPROVED FOR EROSION AND SEDIMENT CONTROL BY THE HOWARD SOIL CONSERVATION DISTRICT.
John R. Rhoads 7/13/06
HOWARD S.C.D. DATE

DEPARTMENT OF PUBLIC WORKS
HOWARD COUNTY, MARYLAND
R. J. ... 6-22-00
CHIEF - BUREAU OF UTILITIES - DATE

DEPARTMENT OF PLANNING & ZONING
HOWARD COUNTY, MARYLAND
... 7/15/06
CHIEF - DEVELOPMENT ENGINEERING DIVISION - DATE

DMW
Daft · McCune · Walker, Inc.
A Team of Land Planners, 200 East Pennsylvania Avenue
Landscape Architects, Towson, Maryland 21286
Engineers, Surveyors & Environmental Professionals
410 296 3333
Fax 296 4705



DESIGN BY:	BIS			
DRAWN BY:	ADL			
CHECKED BY:	JWR			
DATE:	6-19-00			
BY NO.	K.C.I. 1	AS BUILT CONDITIONS ADDED TO PLAN	12/16/00	
REVISION				

PLAN & WATER PROFILE
600 SCALE MAP NO. 41 BLOCK NO. 17

St. Augustine Catholic Church
HOWARD COUNTY MARYLAND
SCALE 1"=50'
SHEET 2 OF 3
CONTRACT NO. 44-3864-D

