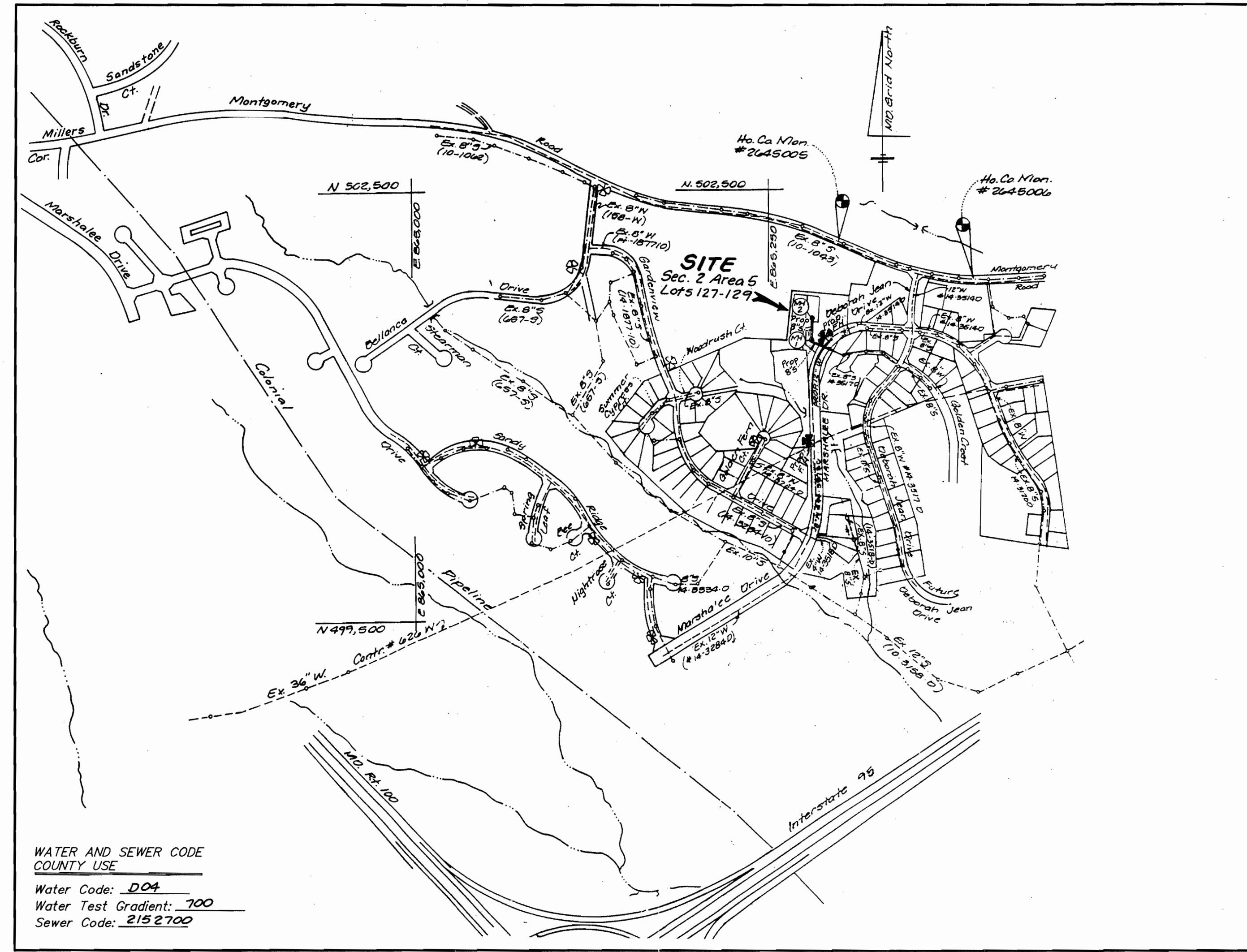


BENCH MARKS:

Ho. Co. Monument # 2645005
Elev 291.929
Concrete Monument 0.3' Below Surface
At Top OF Bank

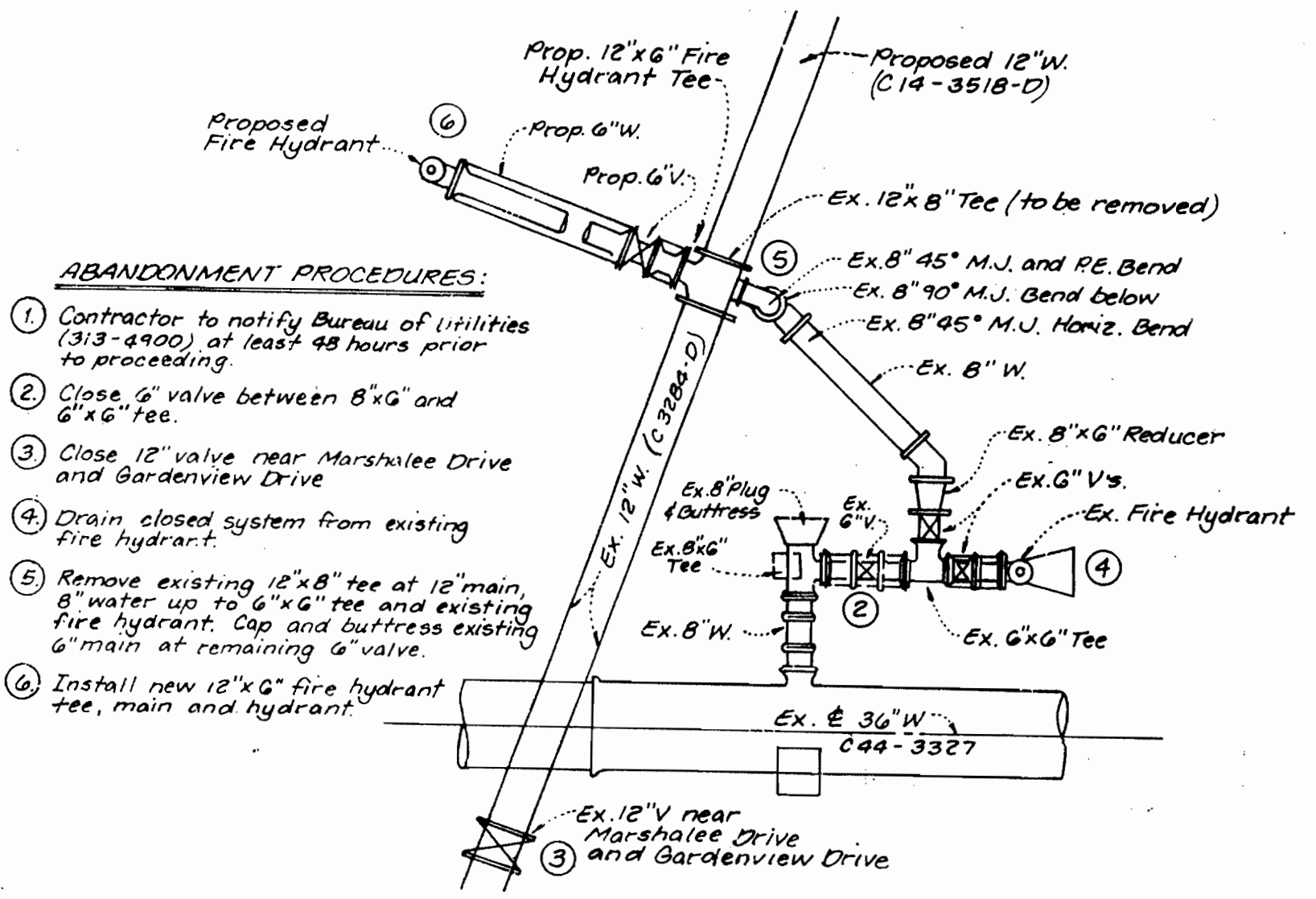
Ho. Co. Monument # 2645006
Elev N/A
Concrete Monument 0.2' Below Surface
At Top OF Bank

| INDEX OF SHEETS | |
|-----------------|-------------|
| SHEET NO. | TITLE |
| 1 | COVER SHEET |
| 2 | PLAN VIEW |
| 3 | PROFILES |
| | |
| | |



General Notes

- PART I**
- Approximate location of existing mains are shown. The Contractor shall take all necessary precautions to protect existing mains and services and maintain uninterrupted supply. Any damage incurred shall be repaired immediately to the satisfaction of the Engineer at the Contractor's expense.
 - All horizontal controls are based on Maryland State Coordinates.
 - All vertical controls are based on U.S.G.S. data.
 - All pipe elevations shown are invert elevations.
 - Clear all utilities by a minimum of 6". Clear all poles by 2' 0" minimum or tunnel as required. The owner has contacted the utility companies and has made arrangements for bracing of poles as shown on the drawings. In the event the Contractor's work requires the bracing of additional poles, any cost incurred by the Owner for bracing of additional poles or damages shall be deducted from money owed the Contractor. The Contractor shall coordinate with the utility companies to schedule the bracing of the poles.
 - For details not shown on the drawings and for materials and construction methods, use Howard County Design Manual, Volume IV, Standard Specifications and Details for Construction (latest edition). The Contractor shall have a copy of Volume IV on the job.
 - Where test pits have been made on existing utilities, they are noted by the symbol at the location of the test pit. A note or notes containing the results of the test pit or pits is included on the drawings. Existing utilities in the vicinity of the proposed work for which test pits have not been dug shall be located by the Contractor two weeks in advance of construction operations at his own expense.
 - Contractor shall notify the following utility companies or agencies at least five (5) working days before starting work shown on these plans:
 - SHA: (410) 531-5533
 - BGE (Contractor Services): (410) 850-4620
 - BGE (Underground damage control): (410) 787-9068
 - Miss Utility: 1-800-257-7777
 - Colonial Pipeline Company: (410) 795-1390
 - Howard County Dept. of Public Works, Bureau of Utilities: (410) 313-4900
 - Trees and shrubs are to be protected from damage to maximum extent. Trees and shrubs within the construction strip are not to be removed or damaged by the Contractor.
 - Contractor shall remove trees, stumps and roots along line of excavation. Payment for such removal shall be included in the unit price bid for construction of the main.
- PART II: WATER**
- All water mains to be D.I.P. Class 52 unless otherwise noted.
 - Tops of all water mains to have a minimum of 3 1/2' cover unless otherwise noted.
 - Valves adjacent to the tees shall be strapped to the tees.
 - All fittings shall be buttressed or anchored with concrete in accordance with the Standard Details unless otherwise provided for on the drawings.
 - Fire hydrants shall be set to the bury line elevations shown on the drawings. All fire hydrants shall be strapped and buttressed with concrete in accordance with the Standard Details. Soil around the fire hydrant shall be compacted in accordance with Section 1000 and 1005 of the Standard Specifications.
 - The Contractor shall not operate any water main valves on the existing water system.
 - All water house connections shall be for inside meter setting unless otherwise noted on plans or in specifications.
- PART III: SEWER**
- All sewer mains to be D.I.P. and P.V.C. unless otherwise noted.
 - All proposed sewers shall be public.
 - All manholes shall be 4' 0" inside diameter unless otherwise noted.
 - Force mains shall be D.I.P. only.
 - Manholes designated W.T. in plan and profile shall have water tight frame and covers; Standard Detail 65.52. Where watertight manhole frame and cover is used, set top of frame 1' 6" above finished grade unless otherwise noted on the drawings.
 - Houses with the symbol "C.N.S." indicates that cellar cannot be served.
 - Manholes shown with 12" and 16" walls are for brick manholes only.



DETAIL
PROPOSED 12" WATER TO EXISTING 8" WATER CONNECTION
(No Scale)

WATER AND SEWER CODE COUNTY USE

Water Code: DO4
Water Test Gradient: 700
Sewer Code: 212 2700

| | |
|-------------------------|-------------------------------------|
| Type of Buildings: | Single Family Detached |
| Number of Lots/Parcels: | 6 (3 Buildable - 30.5) |
| Number of W.H.C.'S: | 3 |
| Number of S.H.C.'S: | 3 |
| Drainage Area: | Deep Run |
| Treatment Plant: | Potapaco Wastewater Treatment Plant |

VICINITY MAP
Scale: 1"=600'

WATER & SEWER CONSTRUCTION PLANS
MARSHALEE WOODS
SECTION TWO AREA FIVE PHASE II
LOTS 127 - 129, 135 - 137

1st ELECTION DISTRICT HOWARD COUNTY, MARYLAND
CONTRACT NO. 14-3845-D

| ITEM | QUANTITIES ESTIMATED | QUANTITIES AS BUILT | | |
|------------------------|----------------------|---------------------|------|-----------------------|
| | | QUANTITIES | TYPE | MANUFACTURER/SUPPLIER |
| 3/4" WHC | 112 LF | | | |
| 4" SHC | 95 LF | | | |
| 8" San. | 239 LF | | | |
| Manhole | 2 Ea. | | | |
| 4" Water | 202 LF | | | |
| 4" Cap & Buttress | 1 Ea. | | | |
| 6" x 4" Reducer | 1 Ea. | | | |
| 12" Water | 974 LF | | | |
| 1/8 Bend | 2 Ea. | | | |
| 1/16 Bend | 1 Ea. | | | |
| 1/32 Bend | 1 Ea. | | | |
| 1/64 Bend | 1 Ea. | | | |
| 12" x 6" FHT | 2 Ea. | | | |
| 6" Water | 45 LF | | | |
| Fire Hydrants | 1 Ea. | | | |
| 12" x 6" Tee | 1 Ea. | | | |
| Relocated Fire Hydrant | 1 Ea. | | | |

REVIEWED FOR HOWARD SOIL CONSERVATION DISTRICT AND MEET TECHNICAL REQUIREMENTS.
Keyl Simmonds 3/22/00
Signature Date

THIS DEVELOPMENT PLAN IS APPROVED FOR SOIL EROSION AND SEDIMENT CONTROL BY THE HOWARD COUNTY SOIL CONSERVATION DISTRICT.
John K. Kolbert 3/22/00
Signature Date

SEDIMENT CONTROL MEASURES FOR THIS CONTRACT WILL BE IMPLEMENTED IN ACCORDANCE WITH SECTION 219 OF THE STANDARD SPECIFICATION AND FINAL ROAD CONSTRUCTION PLANS: F98-6G

DEPARTMENT OF PUBLIC WORKS
Robert M. Bunker 3-15-00
Signature Date

DEPARTMENT OF PLANNING & ZONING
John J. ... 3/21/00
Signature Date

LDE, INC.
9250 RUMSEY ROAD, SUITE 106
COLUMBIA, MARYLAND 21045
(410) 715-1070 (301) 596-3424

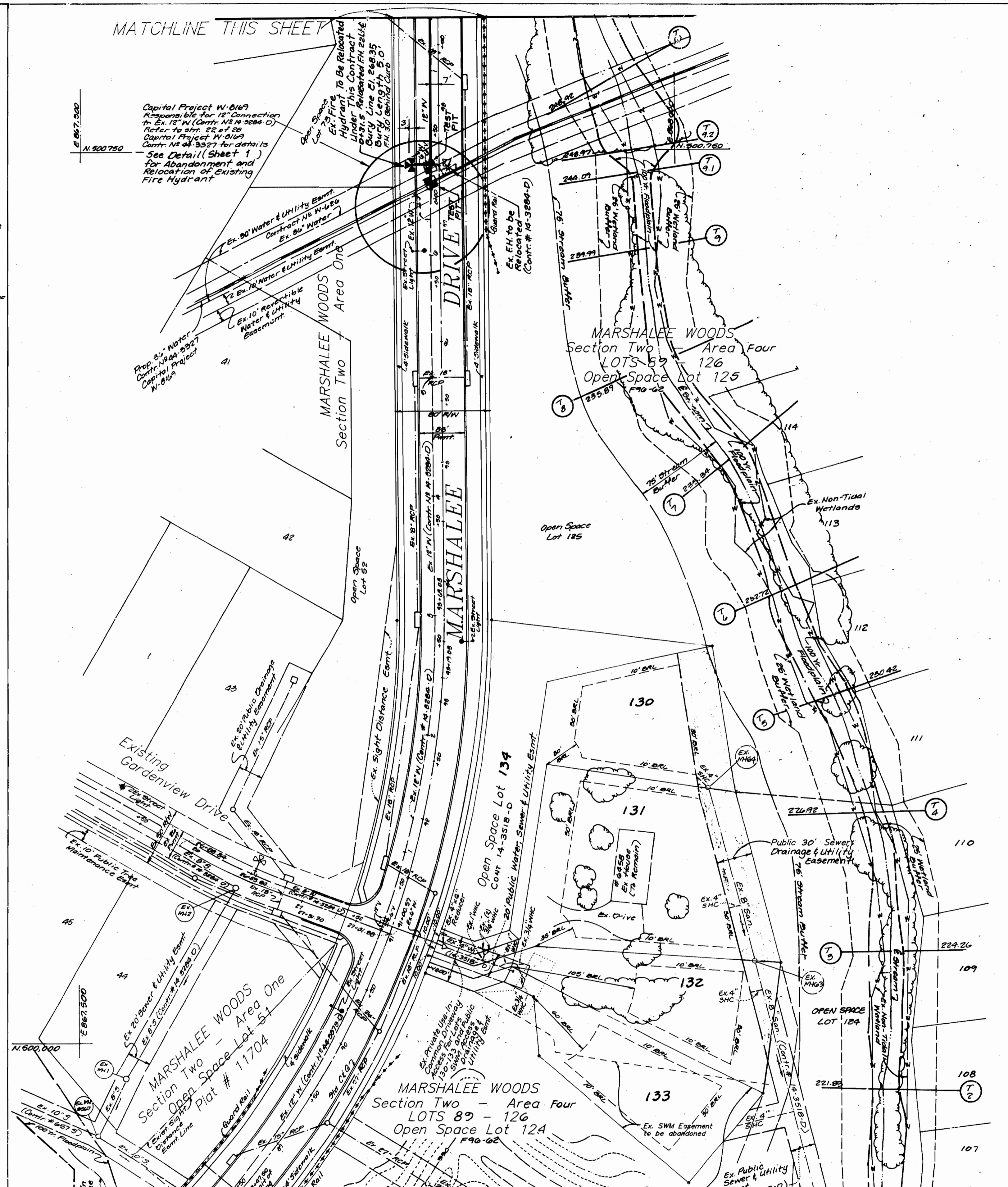
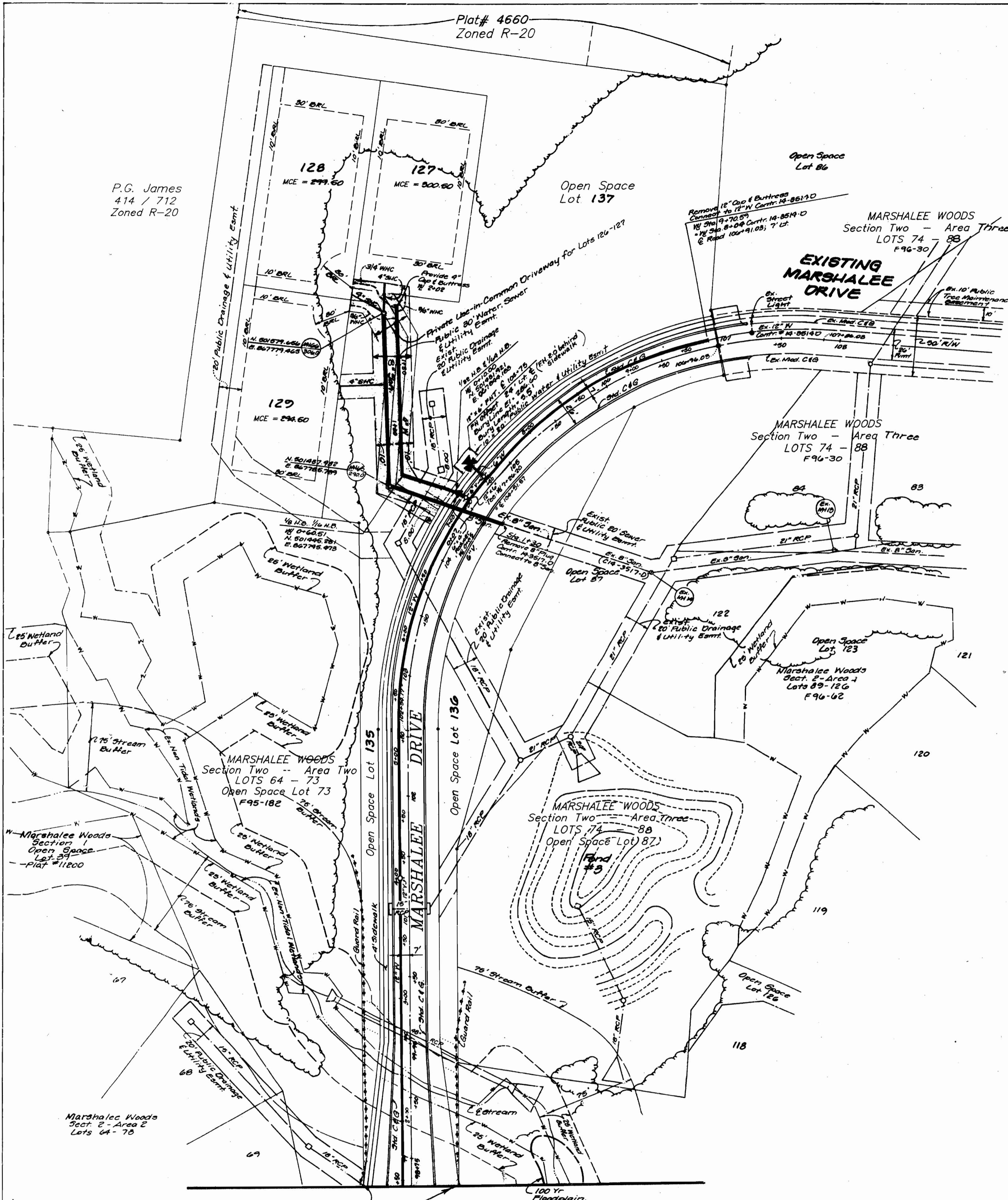


| | | | |
|-----------------|--------------|----------------|----------------------|
| DESIGNED EDS | DRAWN BEI | CHECKED BDB | DATE 2 / 2000 |
| BY NO. | REVISION | DATE | 600 SCALE MAP NO. 37 |

TITLE SHEET
BLOCK 11

MARSHALEE WOODS
SECTION TWO AREA FIVE PHASE II
LOTS 127 - 129, 135 - 137
1st ELECTION DISTRICT HOWARD COUNTY, MARYLAND
CONTRACT NO. 14-3845-D

SCALE AS SHOWN
SHEET 1 OF 3

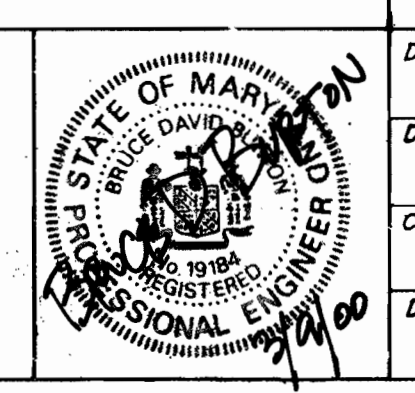


MATCHLINE THIS SHEET

SEDIMENT CONTROL MEASURES FOR THIS CONTRACT WILL BE IMPLEMENTED IN ACCORDANCE WITH SECTION 219 OF THE STANDARD SPECIFICATION AND FINAL ROAD CONSTRUCTION PLANS: F96-66

DEPARTMENT OF PUBLIC WORKS
 DEPARTMENT OF PLANNING & ZONING
 Robert M. Beaman 3-15-00
 CHIEF - BUREAU OF UTILITIES DATE

LDE, INC.
 9250 RUMSEY ROAD, SUITE 106
 COLUMBIA, MARYLAND 21045
 (410) 715-1070 (301) 596-3424

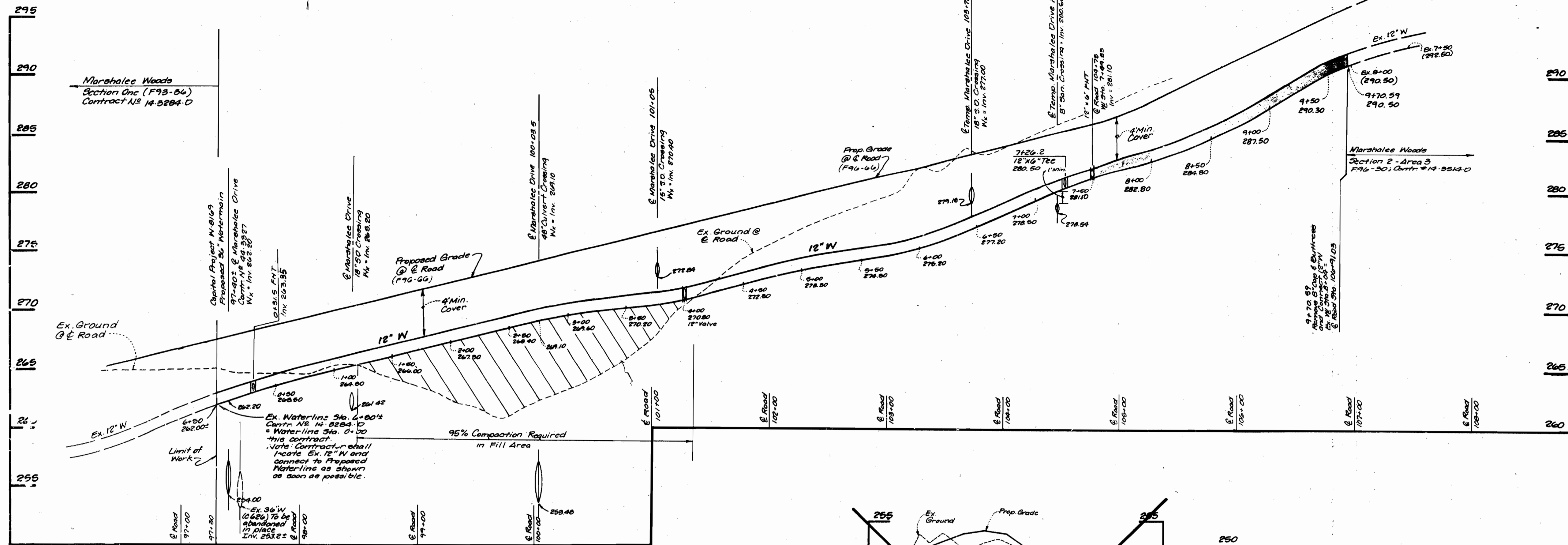


| | | | | | |
|----------|--------|----------|------|--|--|
| DESIGNED | EDS | | | | |
| DRAWN | BEI | | | | |
| CHECKED | BDB | | | | |
| DATE | 2/2000 | | | | |
| BY | NO. | REVISION | DATE | | |

PLAN
 600 SCALE MAP NO. 37
 BLOCK 11

MARSHALEE WOODS
 SECTION TWO - AREA FIVE PHASE II
 LOTS 127 - 129, 135-137
 1st ELECTION DISTRICT HOWARD COUNTY, MARYLAND
 Contract No 14-3845-D
 SCALE 1" = 50'
 SHEET 2 OF 3

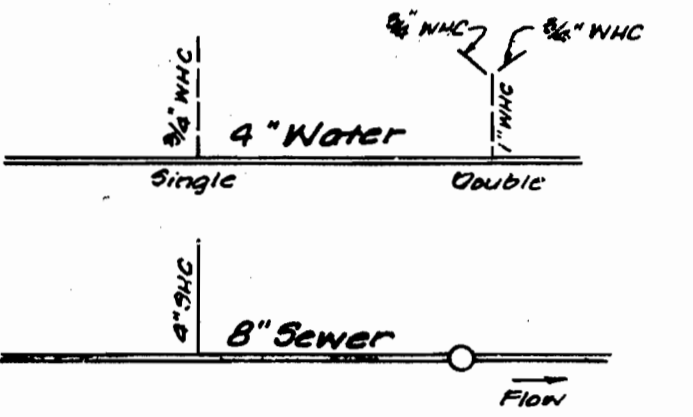
MARSHALEE DRIVE



| LOT # | INV. MAIN | INV. ESMT. / 2 | MIN. CELLAR EL. |
|-------|-----------|----------------|-----------------|
| 127 | 295.34 | 290.80 | 300.50 |
| 128 | 296.34 | 291.98 | 299.50 |
| 129 | 290.31 | 291.11 | 294.50 |
| | | | |
| | | | |

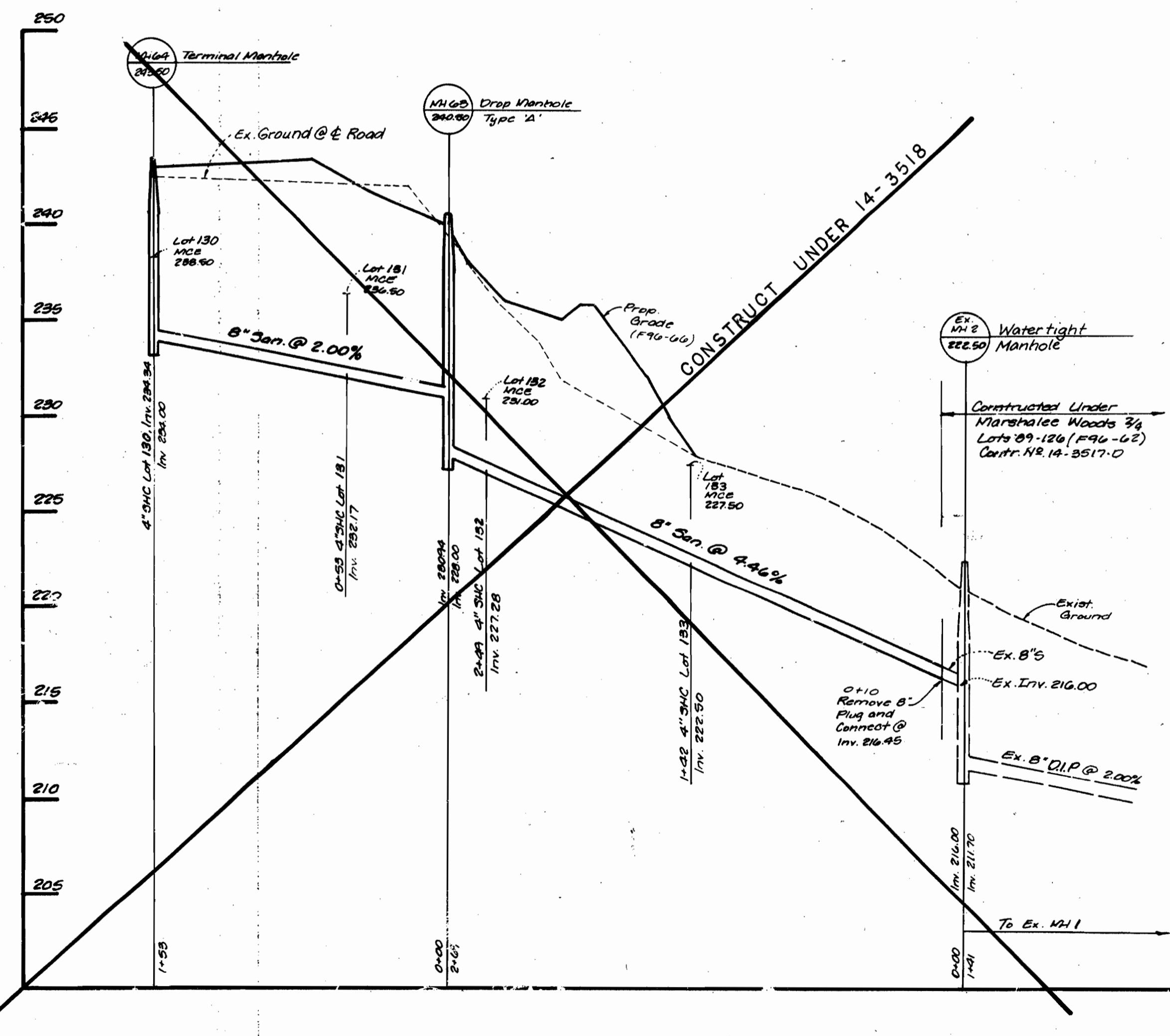
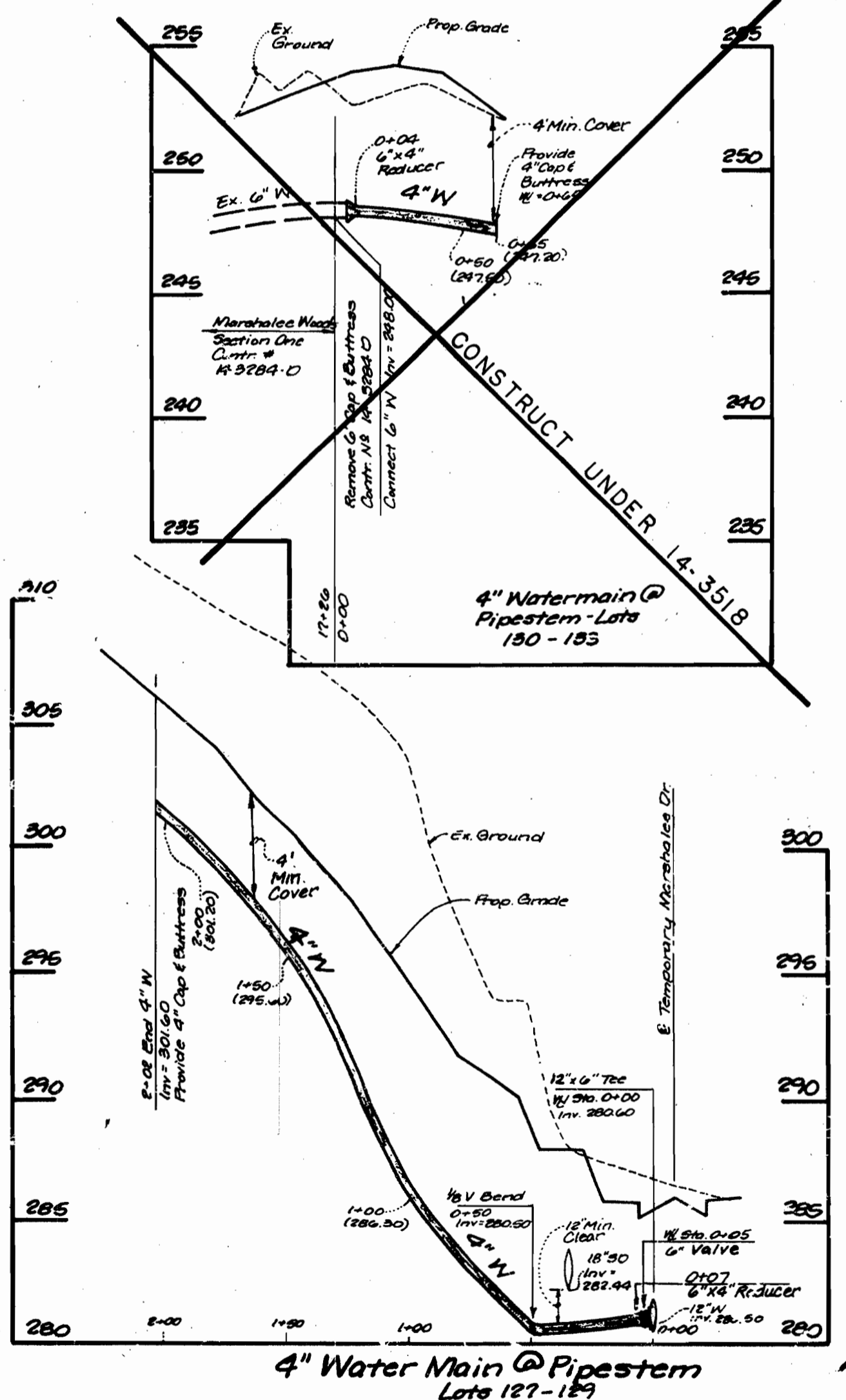
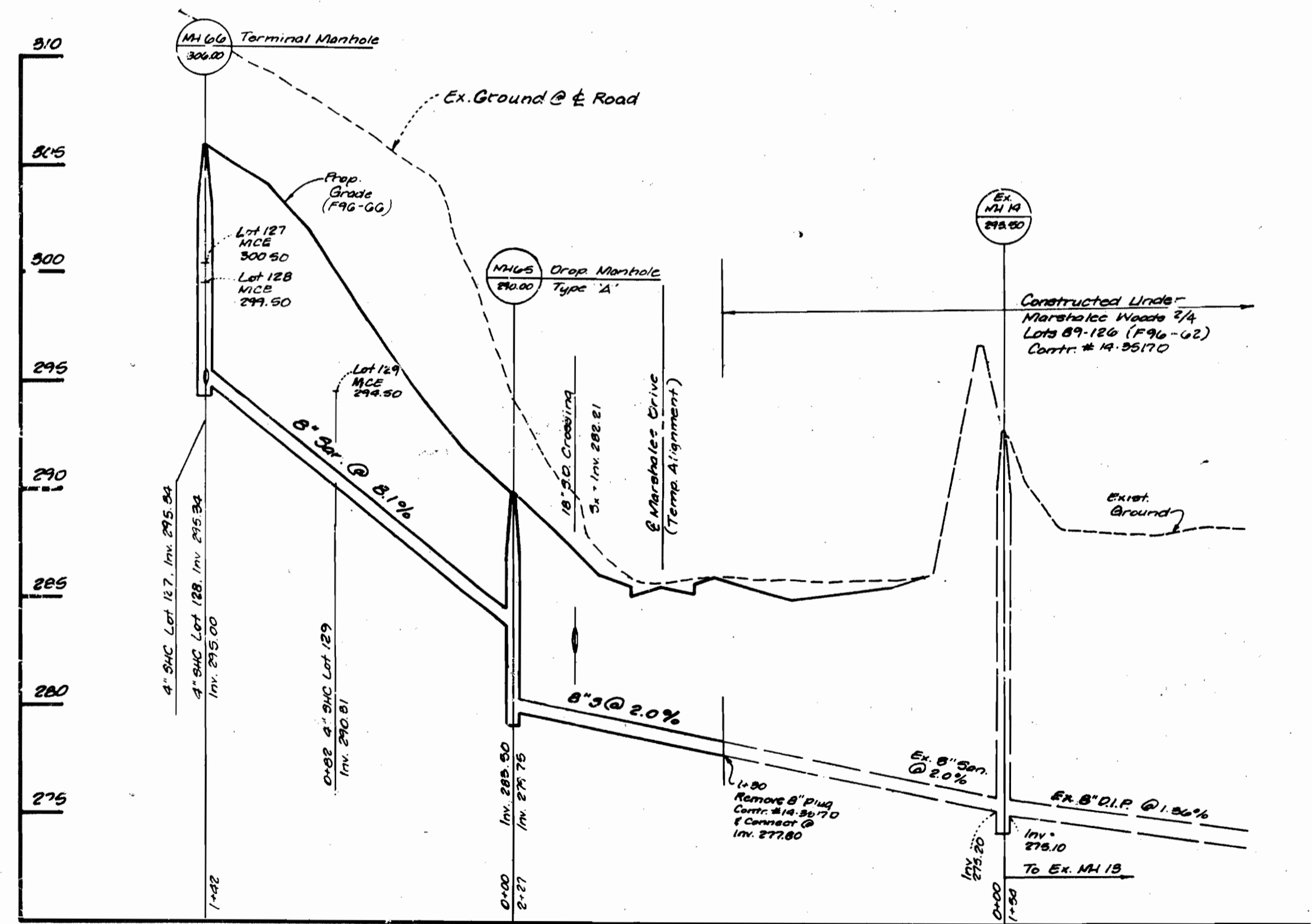
Note:
 1. All house connections are SHC unless otherwise noted.
 2. All SHC must be @ 2.0%

Water & Sewer House Connection Legend



Typical Detail
No Scale

Note: All NWC's shall be 3/4" inside meter setting.



SEDIMENT CONTROL MEASURES FOR THIS CONTRACT WILL BE IMPLEMENTED IN ACCORDANCE WITH SECTION 219 OF THE STANDARD SPECIFICATION AND FINAL ROAD CONSTRUCTION PLANS: F96-06

| | | | | | | | |
|--|---|---|---|----------------------|--|--|--------------------------------|
| DEPARTMENT OF PUBLIC WORKS Robert R. Reimer 3-15-00 CHIEF-BUREAU OF UTILITIES DATE | DEPARTMENT OF PLANNING & ZONING [Signature] 3/15/00 CHIEF-DEVELOPMENT ENGINEERING DIVISION DATE | LDE, INC. 9250 RUMSEY ROAD, SUITE 106 COLUMBIA, MARYLAND 21045 (410) 715-1070 (301) 596-3424 | DESIGNED EDS DRAWN DC1 CHECKED BDB DATE 2/2000 | BY NO. REVISION DATE | PROFILE 600 SCALE MAP NO. 37 BLOCK 11 | MARSHALEE WOODS SECTION TWO - AREA FIVE PHASE II LOTS 127 - 129, 135-137 1st ELECTION DISTRICT HOWARD COUNTY, MARYLAND Contract No 14 - 3845 - D | SCALE 1" = 50' SHEET 3 OF 3 |
|--|---|---|---|----------------------|--|--|--------------------------------|