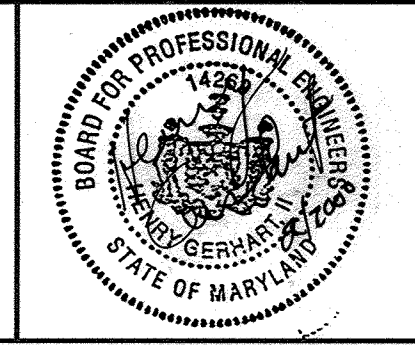
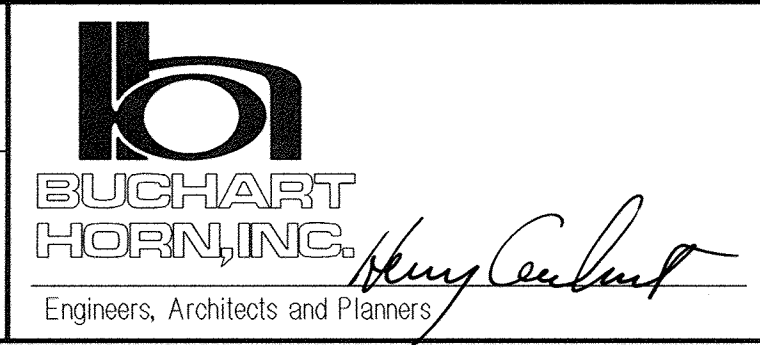


GENERAL OVERALL SITE PLAN / SITE DEVELOPMENT
 SCALE IN FEET 0 50 100 200 300
 SCALE: 1" = 100'

LEGEND:
 [Hatched Box] - INDICATES AREA OF NEW WORK.
 EX. - EXISTING
 HPA - HIGH PRESSURE AIR

DEPARTMENT OF PUBLIC WORKS
 HOWARD COUNTY, MARYLAND
 R. B. B. 5-31-02
 CHIEF, BUREAU OF UTILITIES

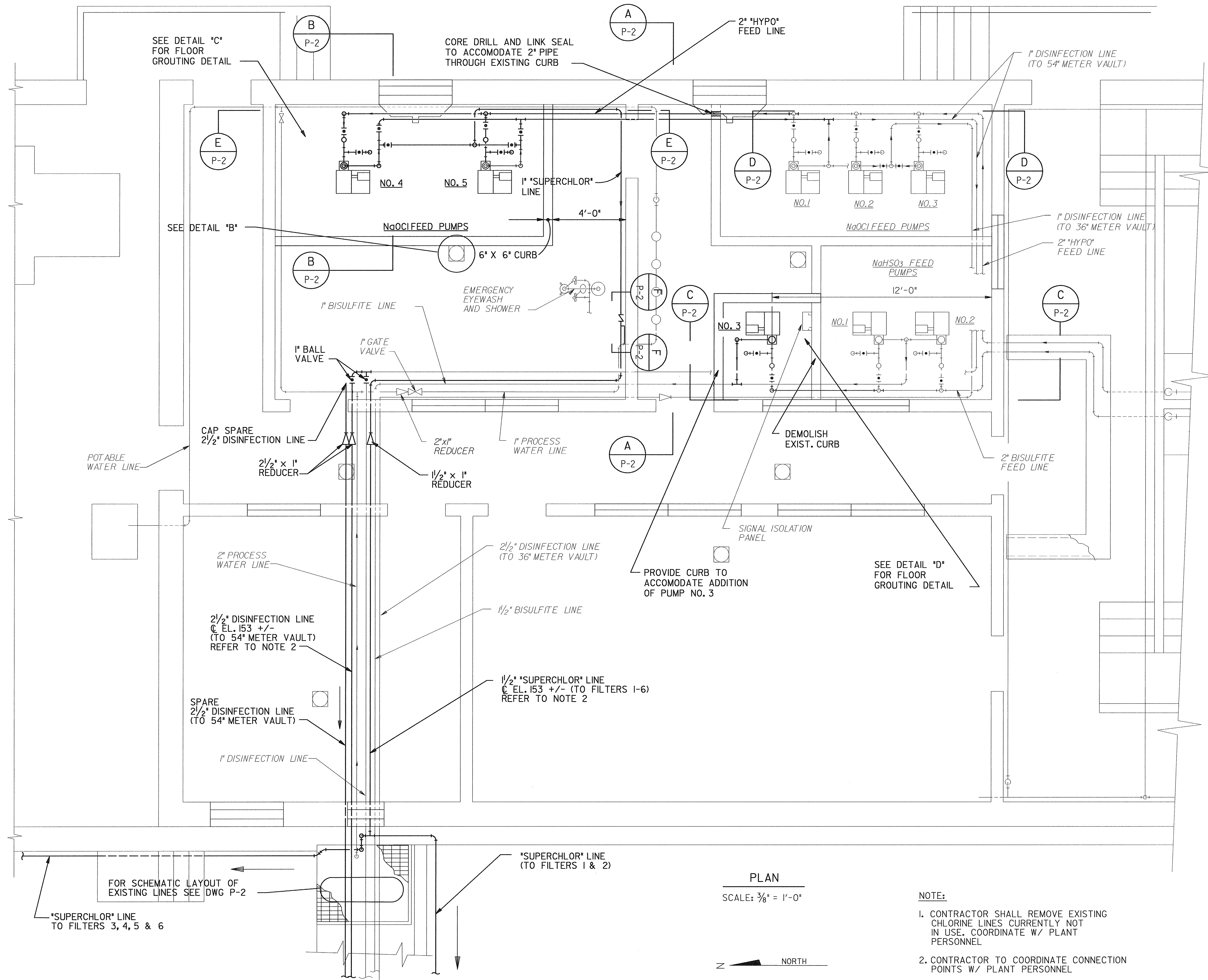


DES:	HG				
DRN:	RP				
CHK:	HG				
DATE:	2/14/00	BY	NO.	REVISION	DATE

OVERALL PLAN

LITTLE PATUXENT WATER RECLAMATION PLANT
 MULTIPLE IMPROVEMENTS
 CHLORINATION / DECHLORINATION
 CAPITAL PROJECT NO. S-6223
 CONTRACT NO. 20-3837
 ELECTION DISTRICT NO. 6
 HOWARD COUNTY, MARYLAND

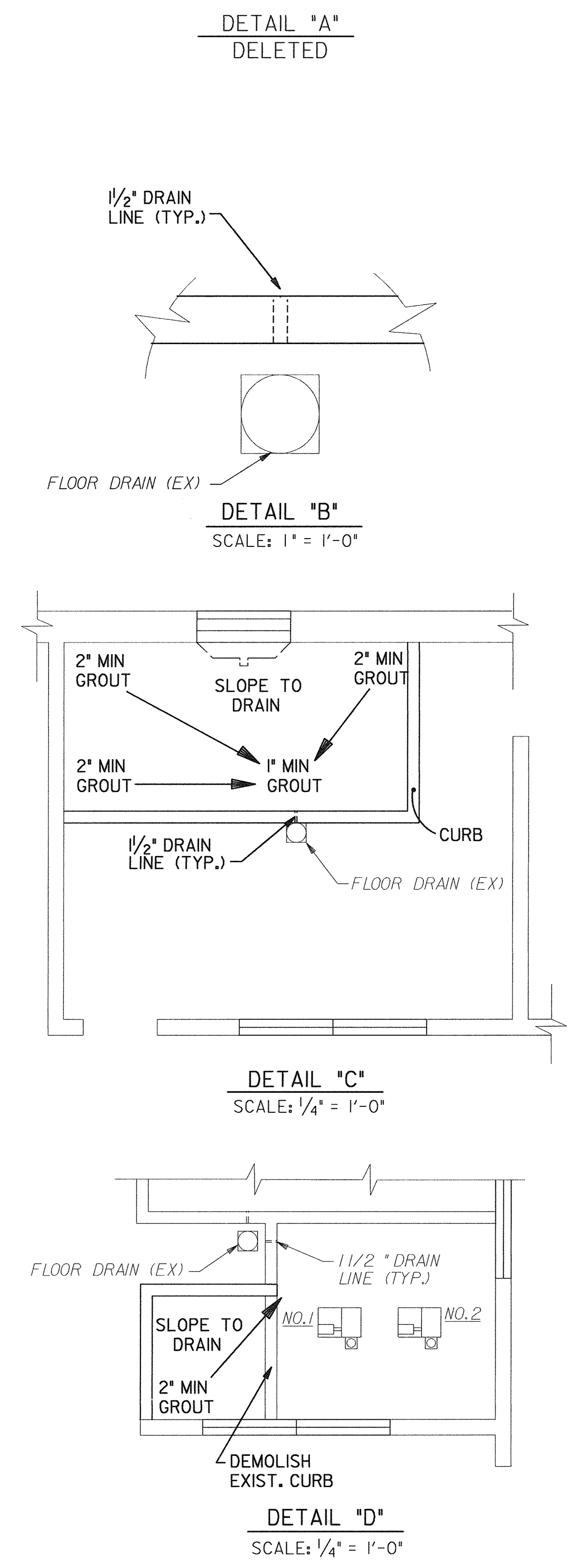
SCALE AS SHOWN
 SHEET 2 OF 10
 SI-1



PLAN
SCALE: 3/8" = 1'-0"



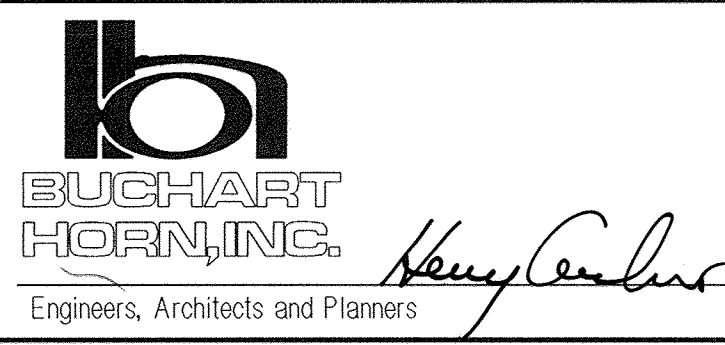
- NOTE:
- CONTRACTOR SHALL REMOVE EXISTING CHLORINE LINES CURRENTLY NOT IN USE. COORDINATE W/ PLANT PERSONNEL
 - CONTRACTOR TO COORDINATE CONNECTION POINTS W/ PLANT PERSONNEL



FOR SCHEMATIC LAYOUT OF EXISTING LINES SEE DWG P-2

SUPERCHLOR LINE TO FILTERS 3, 4, 5 & 6

DEPARTMENT OF PUBLIC WORKS
HOWARD COUNTY, MARYLAND



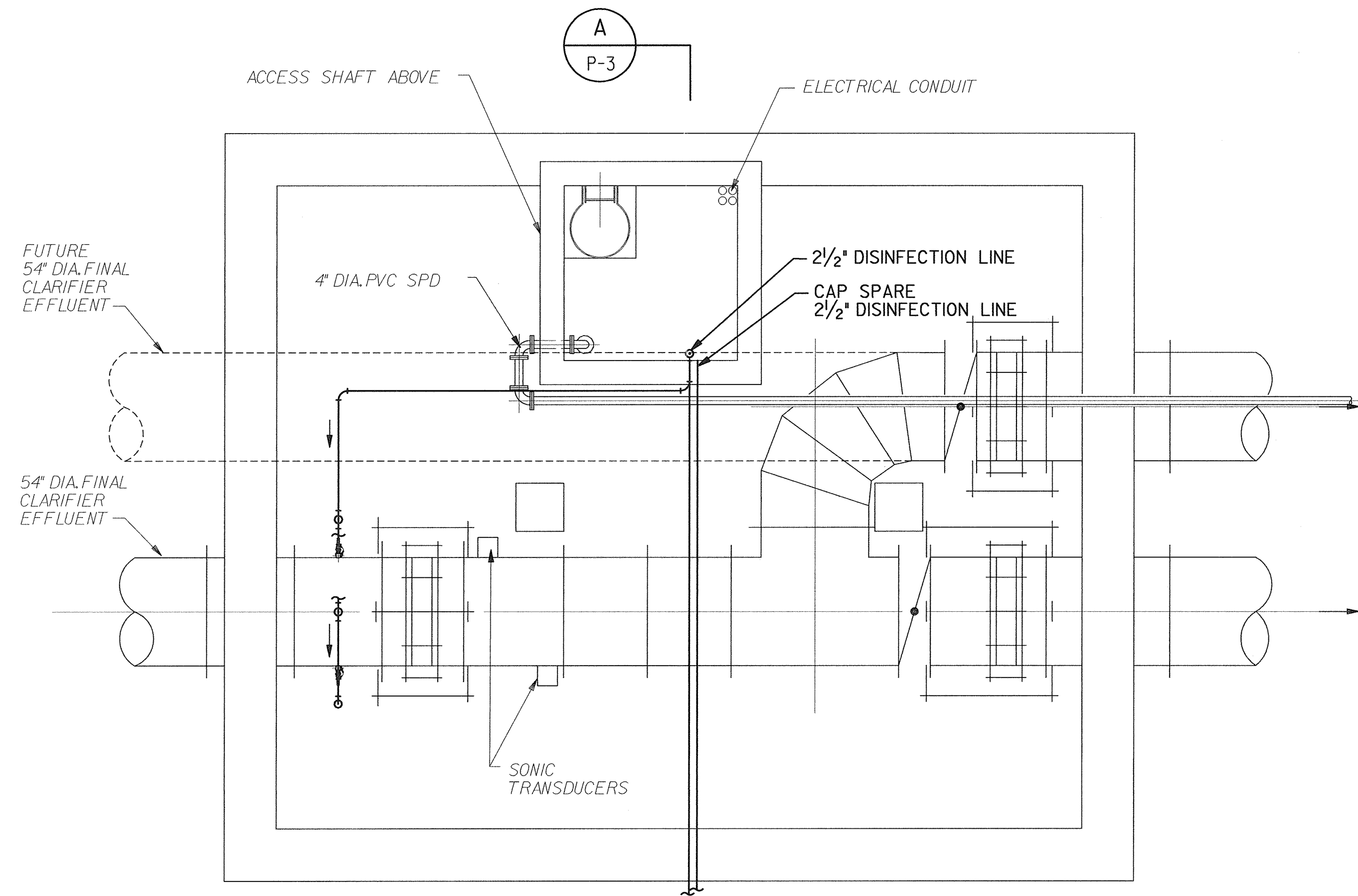
DES:	HG				
DRN:	RP				
CHK:	HG				
DATE:	2/14/00	BY:	NO.	REVISION	DATE

DISINFECTATION BUILDING
MODIFICATIONS
CHEMICAL FEED ROOM PLANS

LITTLE PATUXENT WATER RECLAMATION PLANT
MULTIPLE IMPROVEMENTS
CHLORINATION / DECHLORINATION
CAPITAL PROJECT NO. S-6223
CONTRACT NO. 20-3837
ELECTION DISTRICT NO. 6
HOWARD COUNTY, MARYLAND

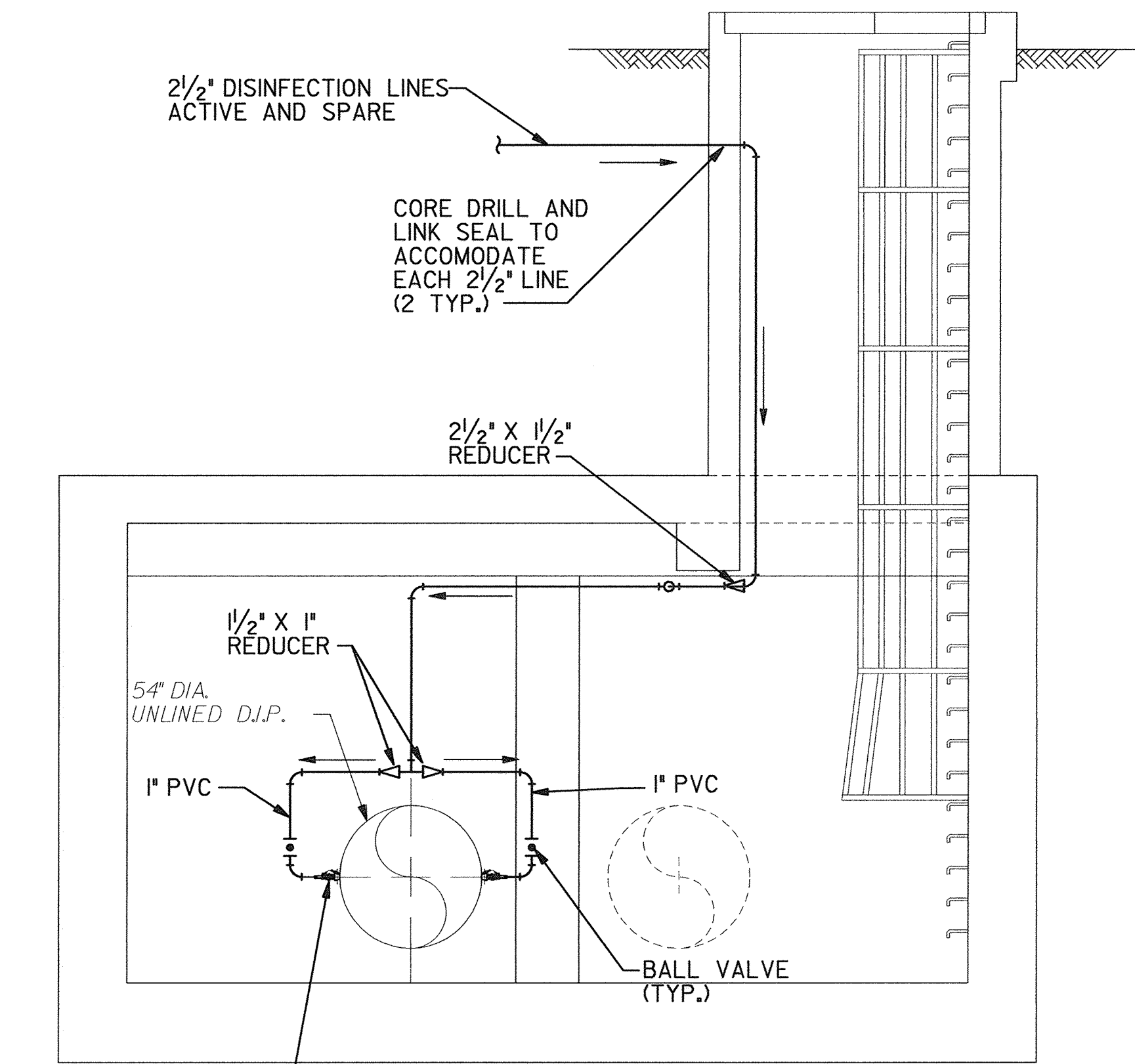
SCALE AS SHOWN
SHEET
4 OF 10
P-1

4PRF\$ 80GN\$
FILE: g:\p\17805\02_desig\chlor\feed\02.plt.dgn
DATE: 12-01-99 10:25

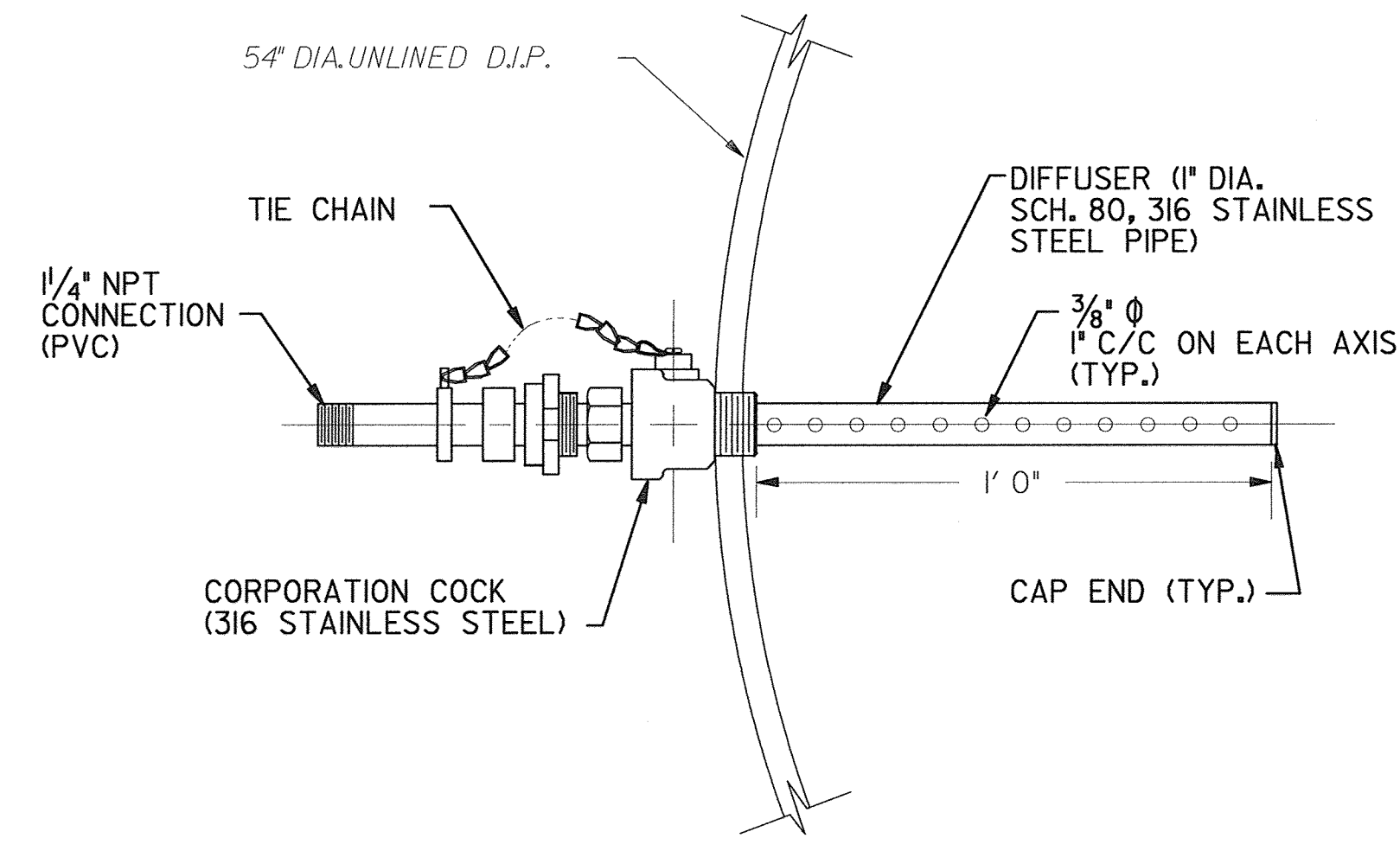


A
P-3

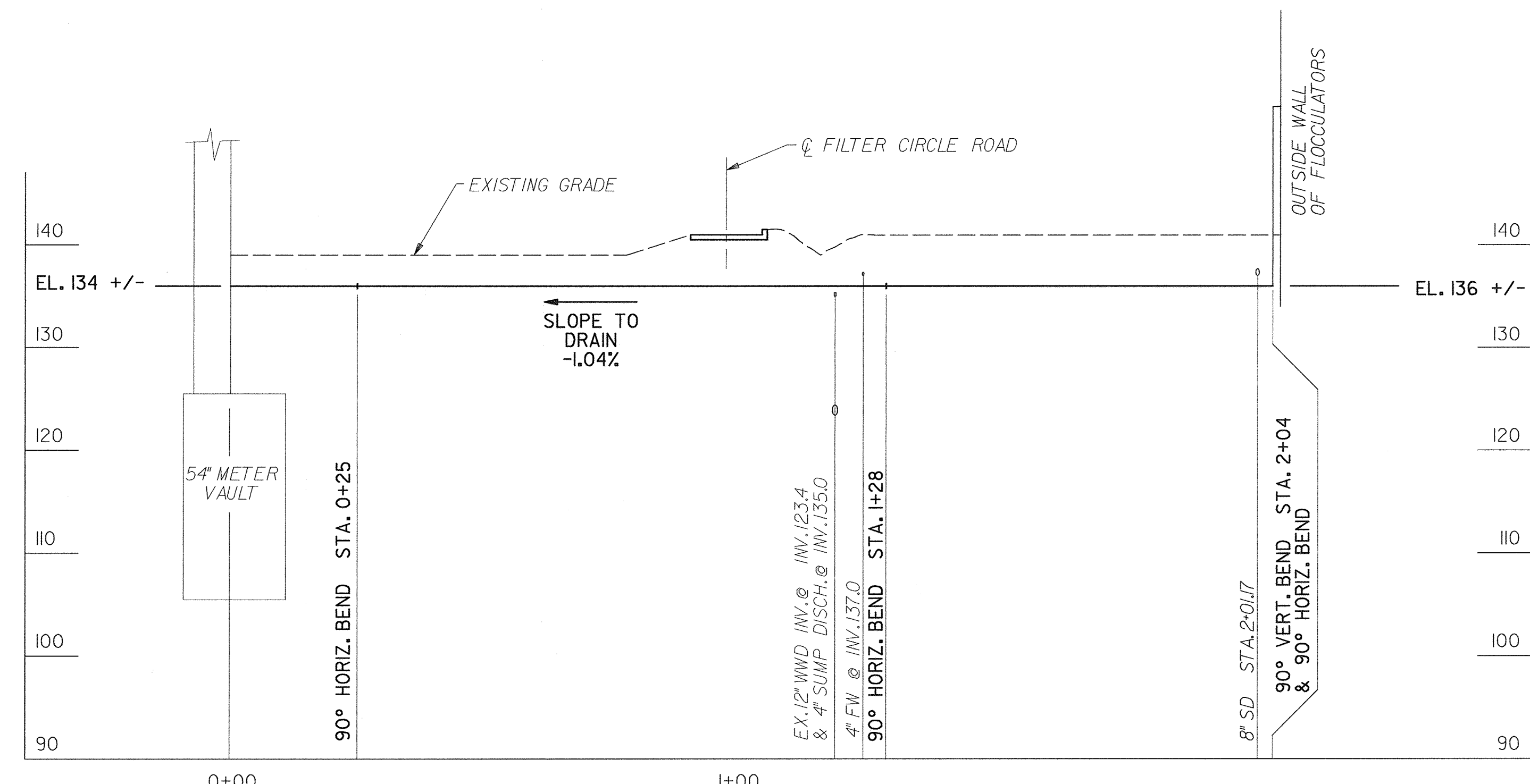
PLAN
SCALE: 1/4" = 1'-0"



SECTION A-A
SCALE: 1/4" = 1'-0"



CHLORINE DIFFUSER ASSEMBLY
SCALE: 3" = 1'-0"



2 1/2" DISINFECTION LINE
(REFER TO DWG C-1)
SCALE: HORIZ. 1" = 20'
VERT. 1" = 10'

DEPARTMENT OF PUBLIC WORKS
HOWARD COUNTY, MARYLAND

Robert Beniger 5-31-00
CHIEF, BUREAU OF UTILITIES DATE

BUCHART HORN, INC.
Engineers, Architects and Planners
Henry Culver



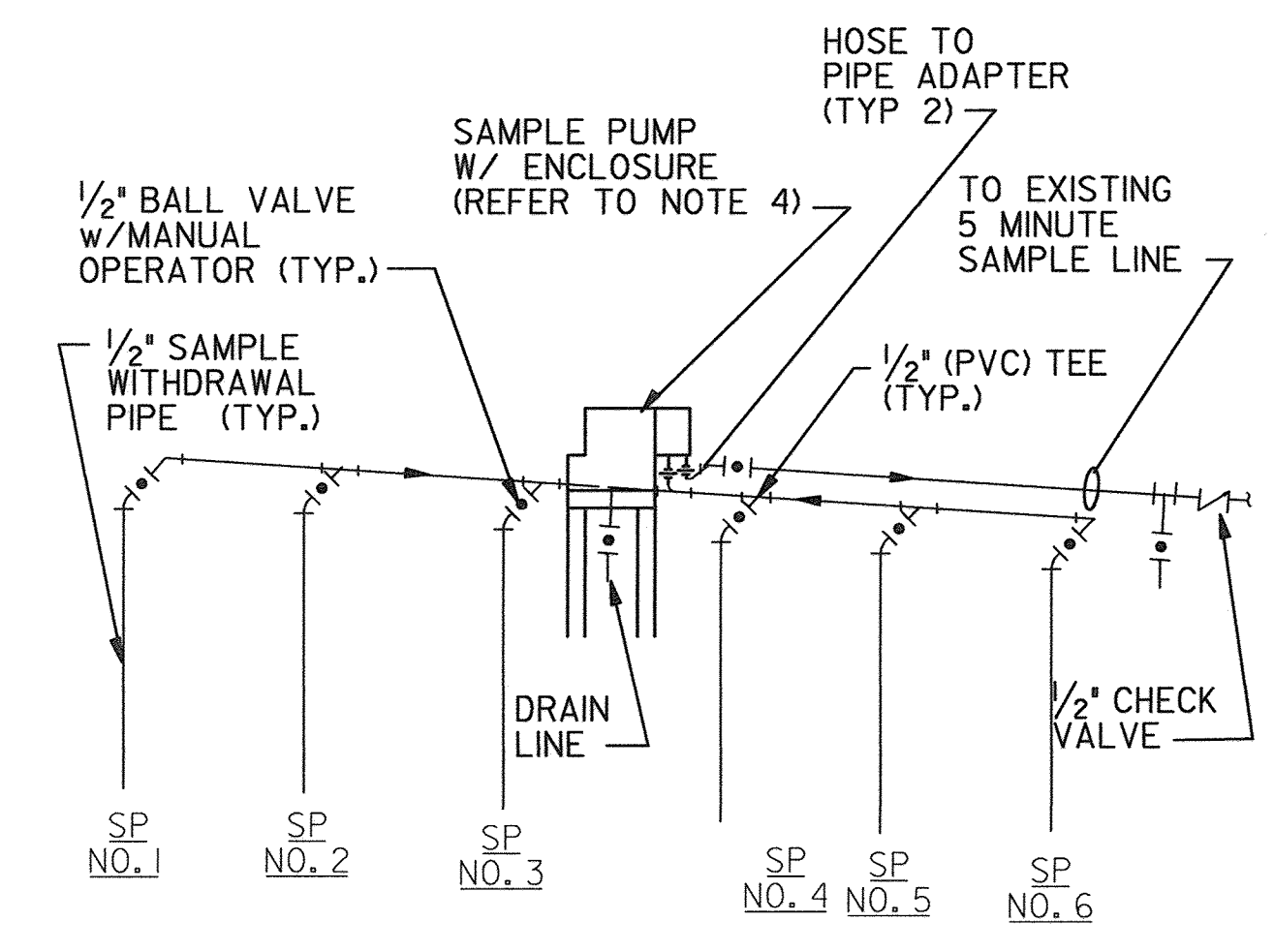
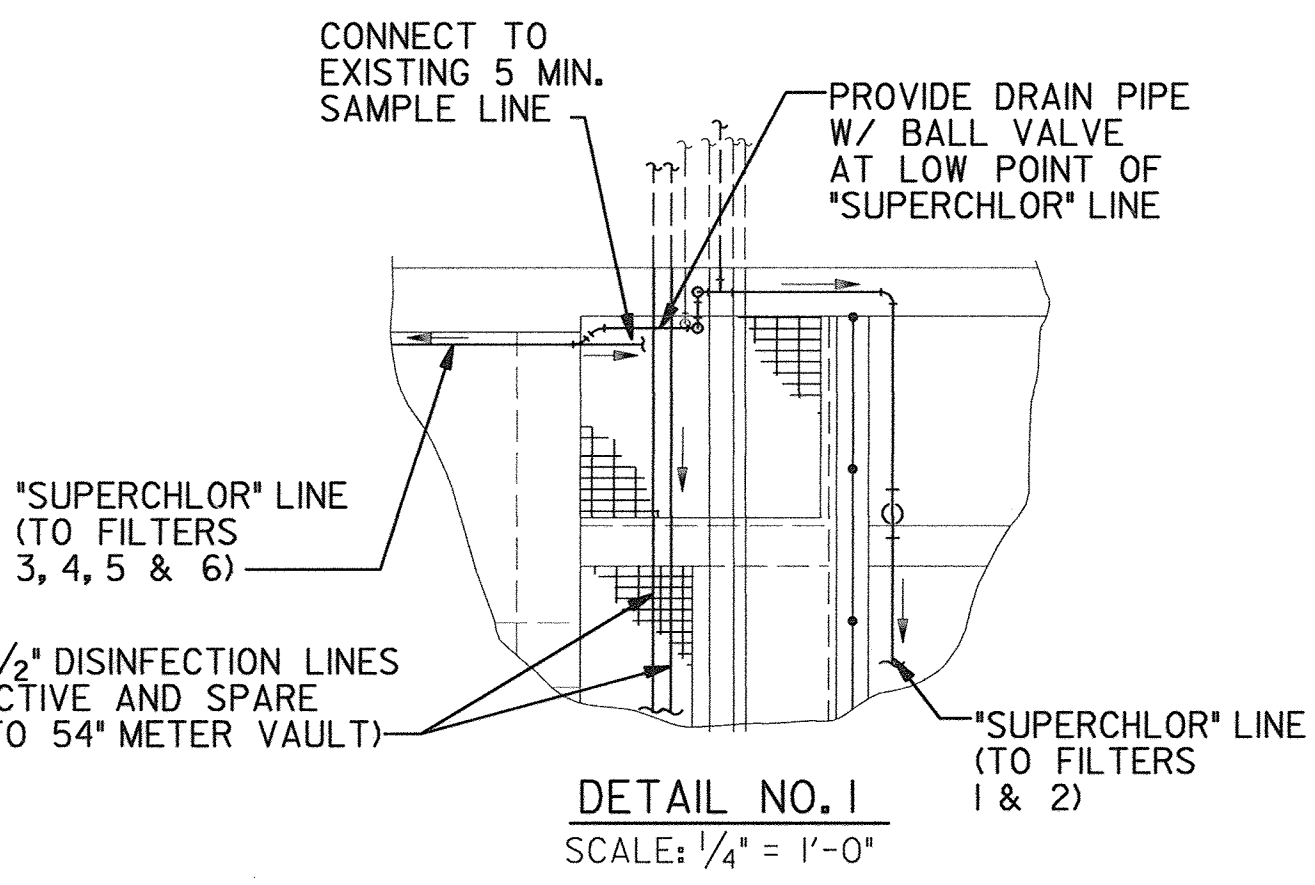
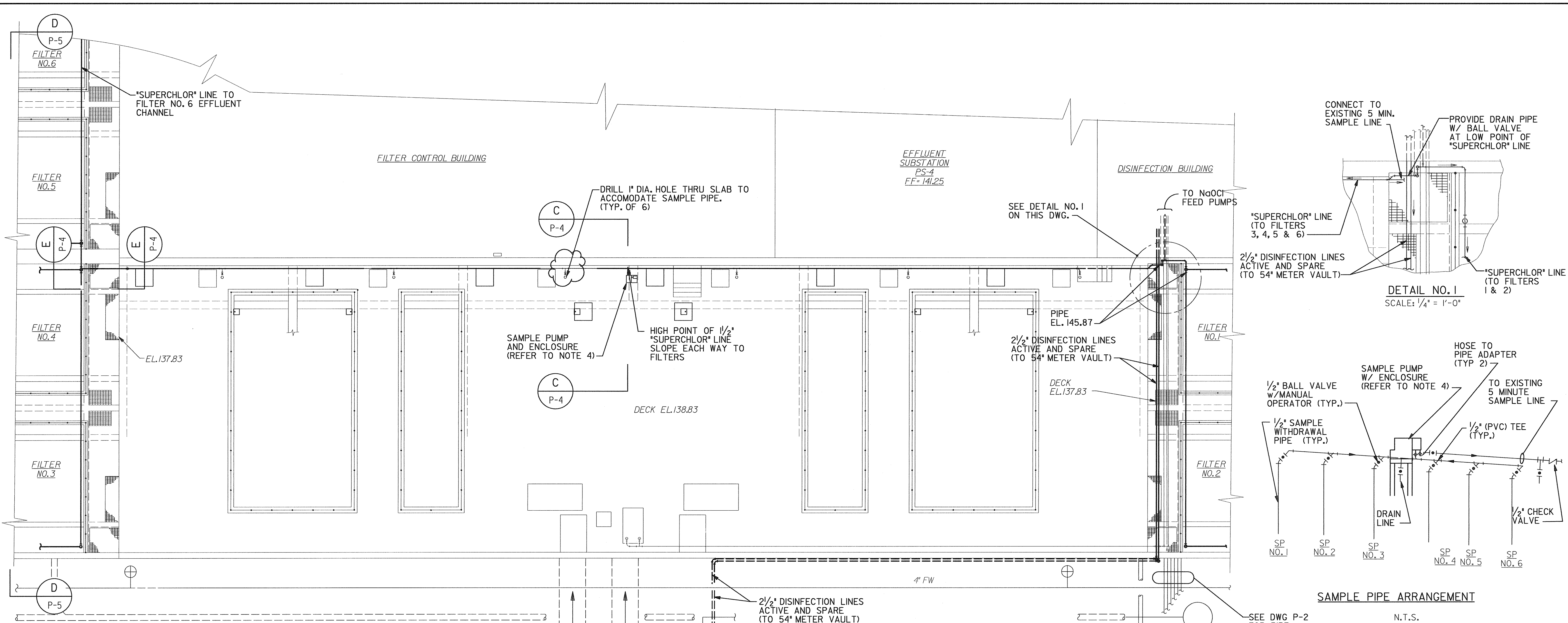
DES:	HG			
DRN:	RP			
CHK:	HG			
DATE:	2/14/00	BY:	NO.	REVISION
				DATE

METER VAULT
PLAN AND SECTION

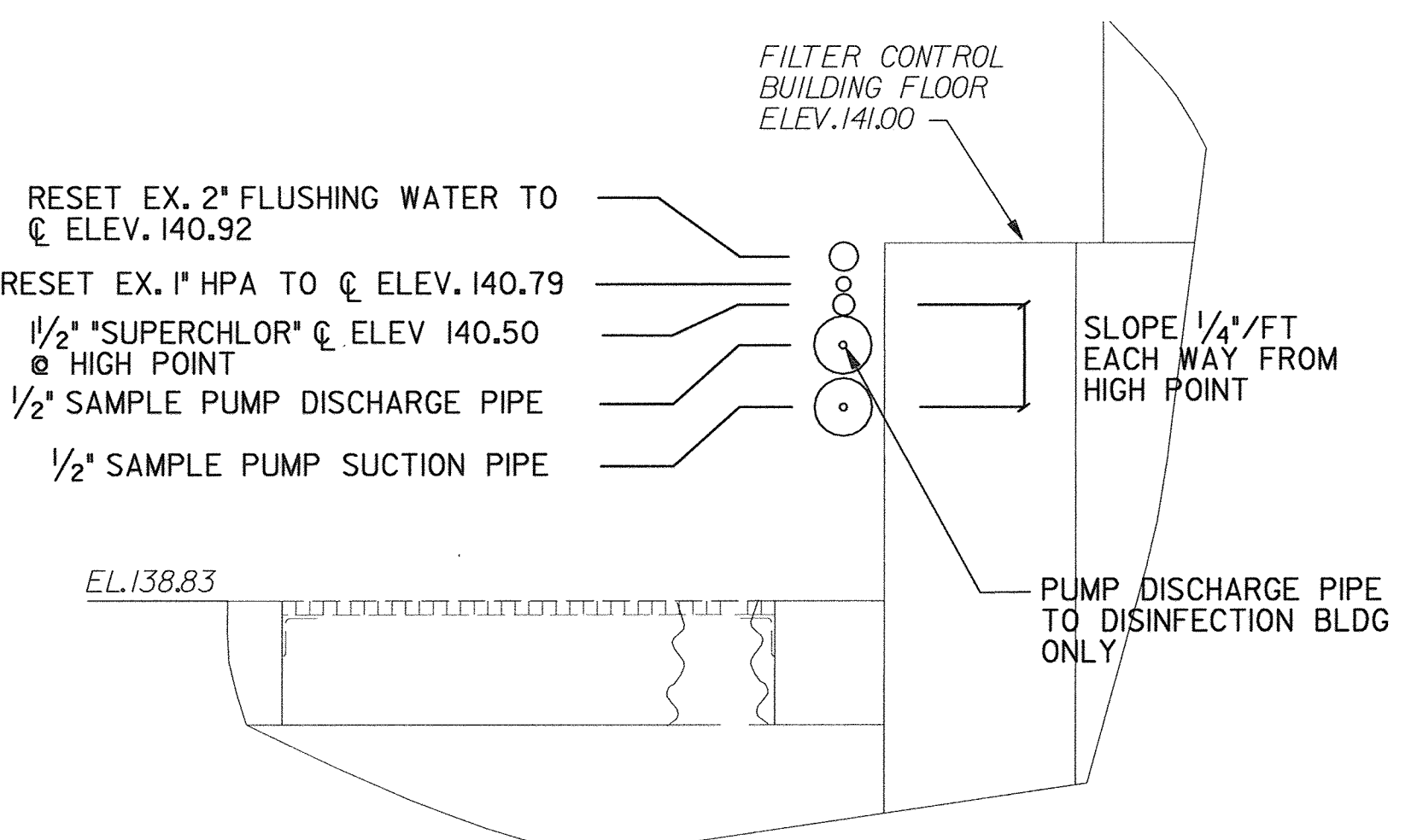
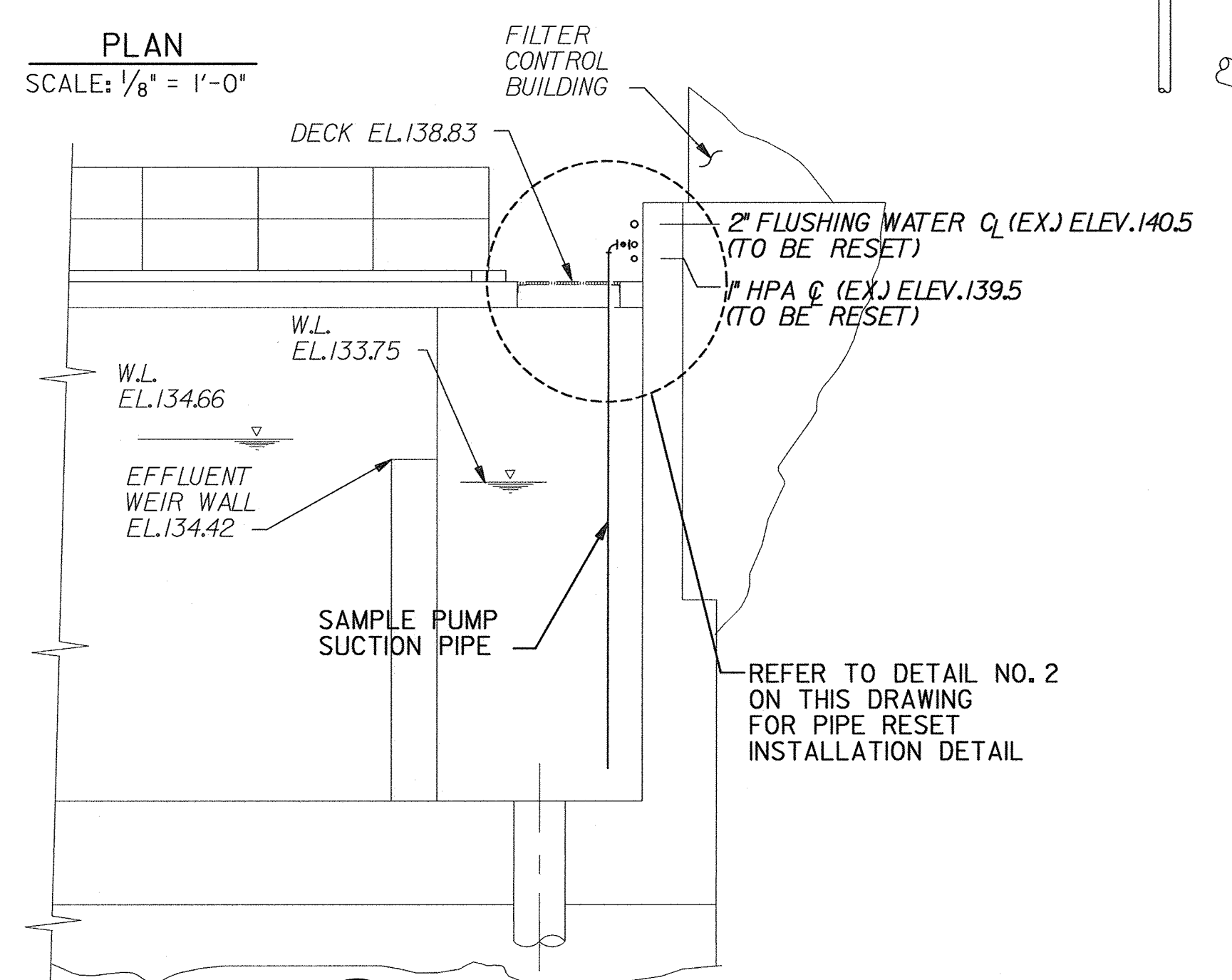
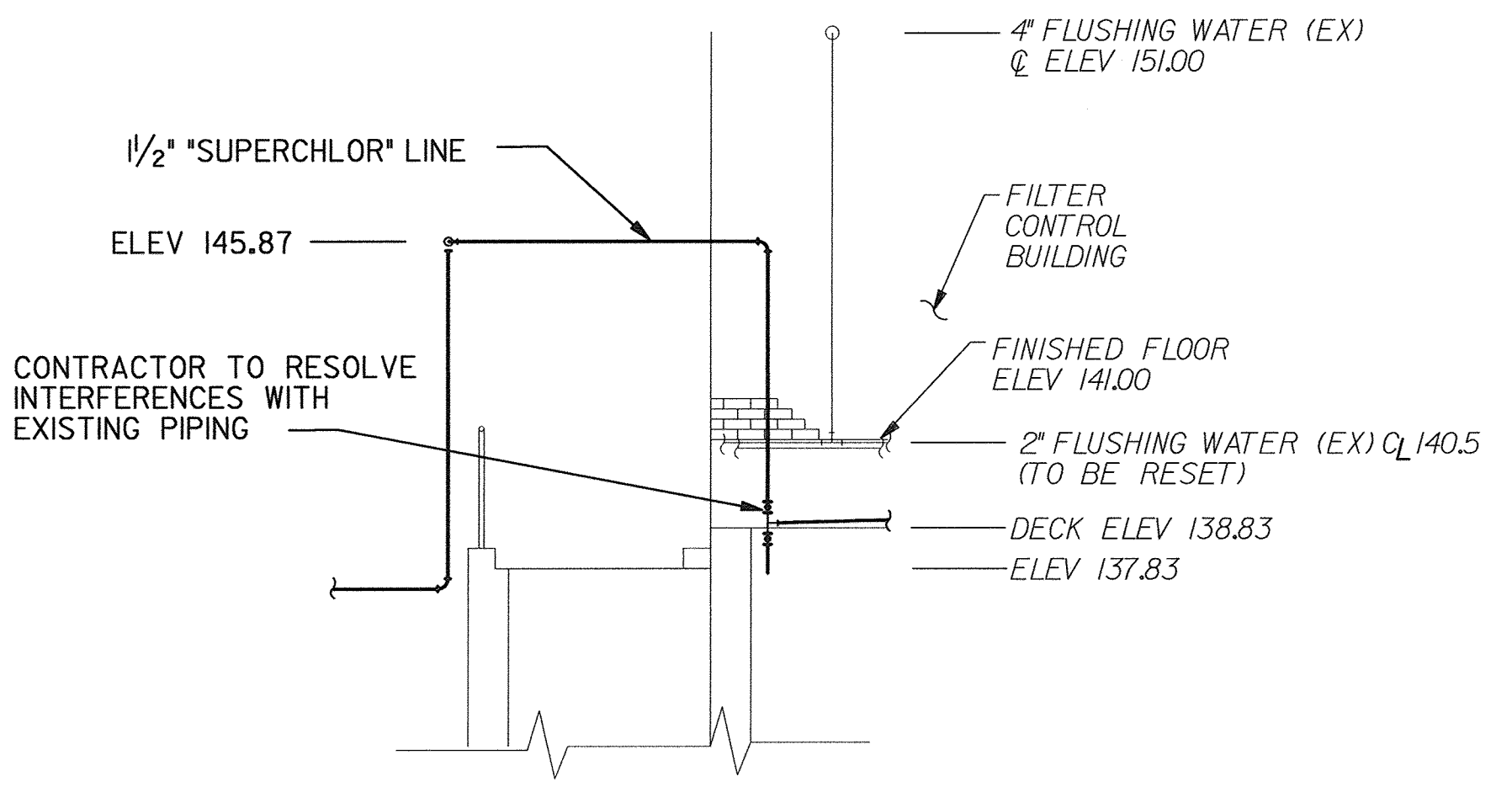
LITTLE PATUXENT WATER RECLAMATION PLANT
MULTIPLE IMPROVEMENTS
CHLORINATION / DECHLORINATION
CAPITAL PROJECT NO. S-6223
CONTRACT NO. 20-3837
ELECTION DISTRICT NO. 6
HOWARD COUNTY, MARYLAND

SCALE AS SHOWN
SHEET 6 OF 10
P-3

FILE: g:\09\71805\02_design\chlor\cad\02.p3.dgn
DATE: 12-Nov-99 15:08

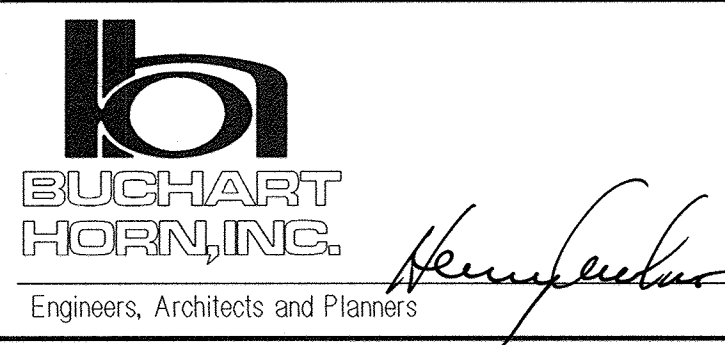


- NOTES:**
- SLOPE ALL LINES TO DRAIN
 - CONTRACTOR SHALL PROVIDE PIPE SUPPORTS AS NEEDED MAX. SPACING - 10' C-C
 - PIPES MAY BE STACKED
 - PROVIDE STANDARD PUMP ENCLOSURE AND ALUMINUM FRAME WITH BASE PLATE. ENCLOSURE TO BE PUMP GUARD MODEL PG-1500 AS MANUFACTURED BY HOT BOX, INC., JACKSONVILLE, FL., OR APPROVED EQUAL.



DEPARTMENT OF PUBLIC WORKS
HOWARD COUNTY, MARYLAND

Robert D. ... 5-31-02
CHIEF, BUREAU OF UTILITIES



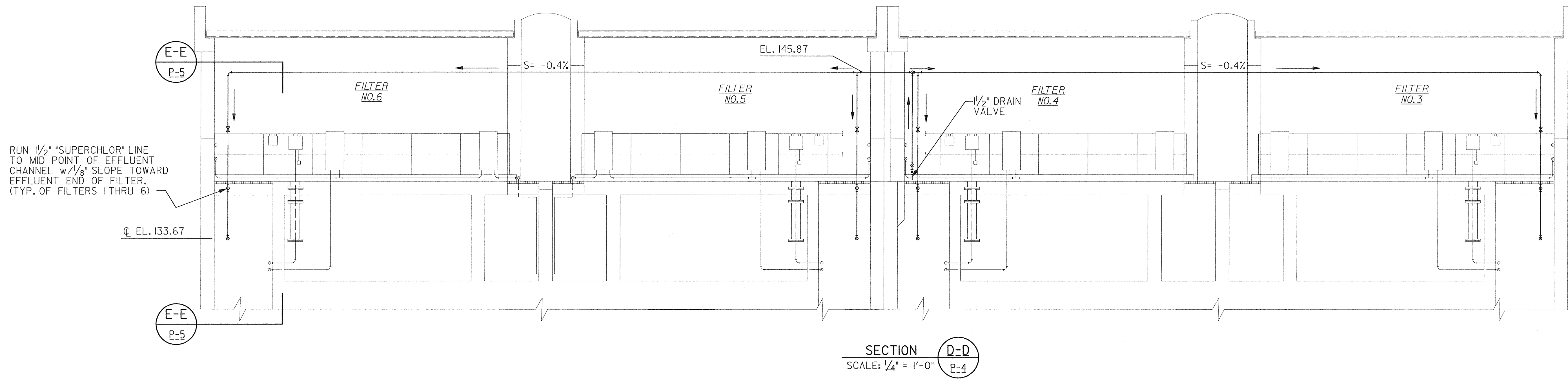
DES:	HG				
DRN:	RP				
CHK:	HG				
DATE:	2/14/00	BY:	NO.	REVISION	DATE

FLOCCULATION BASINS

LITTLE PATUXENT WATER RECLAMATION PLANT
MULTIPLE IMPROVEMENTS
CHLORINATION / DECHLORINATION
CAPITAL PROJECT NO. S-6223
CONTRACT NO. 20-3837
ELECTION DISTRICT NO. 6
HOWARD COUNTY, MARYLAND

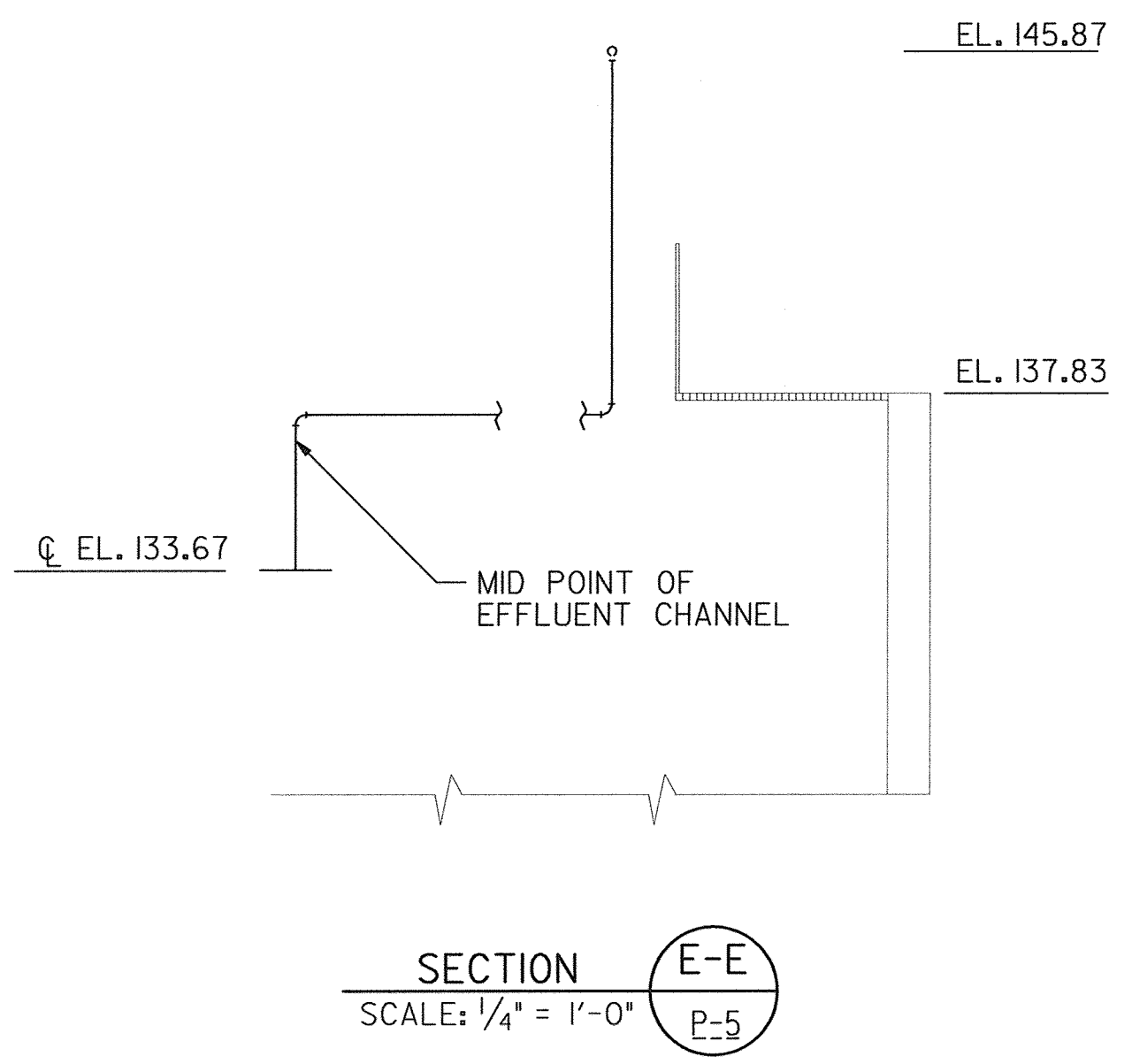
SCALE AS SHOWN SHEET
7 OF 10
P-4

FILE: g:\09\7805\02_desig\vhon\ccad\02_p1a.dgn
DATE: 07-Oct-99 08:53



RUN 1/2" SUPERCHLOR LINE TO MID POINT OF EFFLUENT CHANNEL w/1/8" SLOPE TOWARD EFFLUENT END OF FILTER. (TYP. OF FILTERS 1 THRU 6)

- NOTE:**
- CONTRACTOR SHALL PROVIDE PIPE SUPPORTS, MINIMUM 10' C/C
 - PIPE INSTALLATION FOR FILTERS #1 AND #2 SIMILAR TO ABOVE



DEPARTMENT OF PUBLIC WORKS
HOWARD COUNTY, MARYLAND

Robert Benjamin 5-31-00
CHP, BUREAU OF UTILITIES DATE

BUCHART HORN, INC.
Engineers, Architects and Planners



DES:	HG				
DRN:	RP				
CHK:	HG				
DATE:	2/14/00	BY:	NO.	REVISION	DATE

FILTER SECTIONS
3 THROUGH 6

LITTLE PATUXENT WATER RECLAMATION PLANT
MULTIPLE IMPROVEMENTS
CHLORINATION / DECHLORINATION
CAPITAL PROJECT NO. S-6223
CONTRACT NO. 20-3837
ELECTION DISTRICT NO. 6
HOWARD COUNTY, MARYLAND

SCALE AS SHOWN
SHEET 8 OF 10
P-5

4PRF\$ 8DCN\$
FILE: d:\09\7895\02_dest\chlor\cad\02.p5.dgn
DATE: 08-Nov-99 09:08

ELECTRICAL ABBREVIATIONS

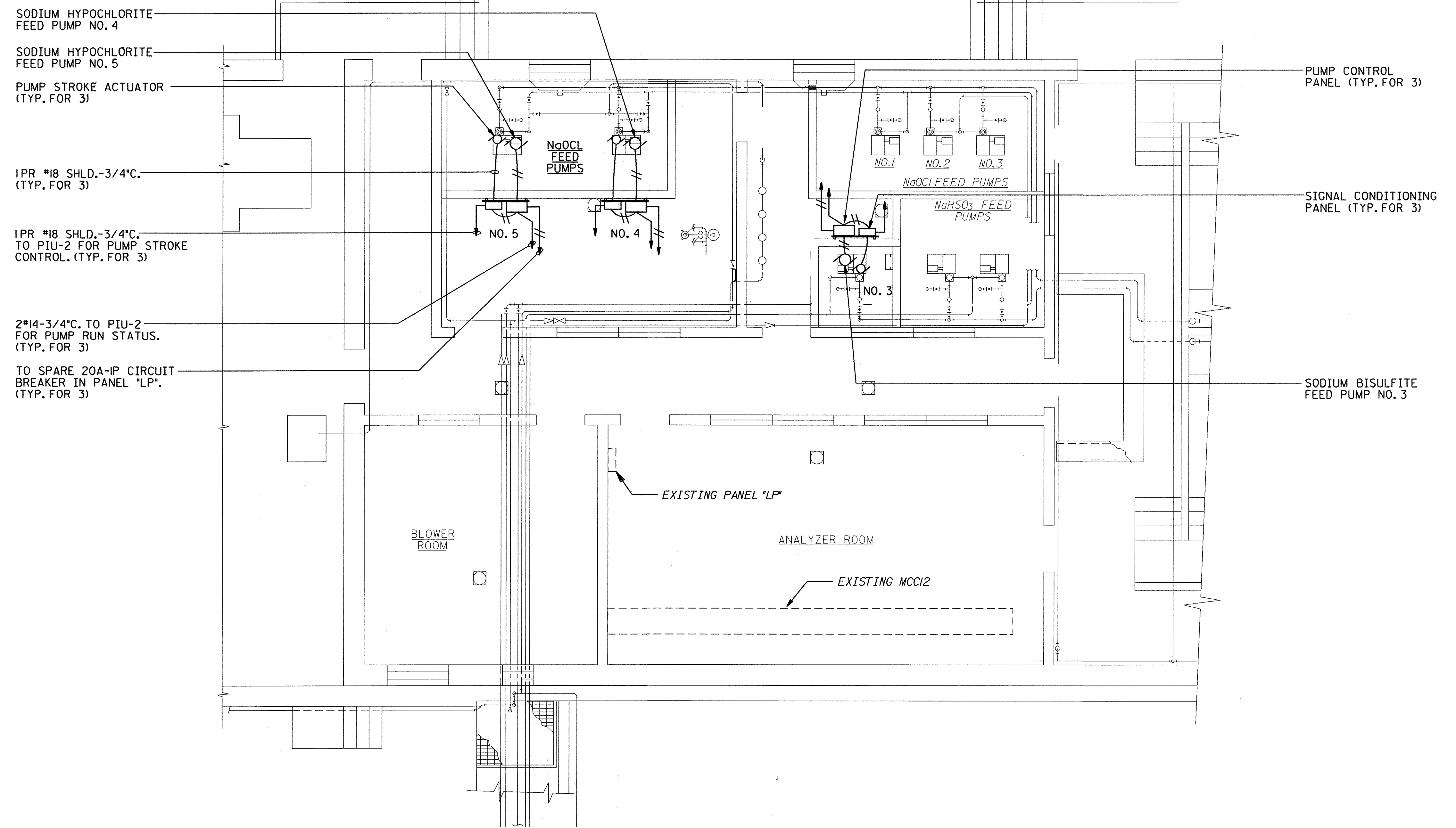
- A - AMPERE
- C - CONDUIT
- GRD. - GROUND
- HP - HORSEPOWER
- MCC - MOTOR CONTROL CENTER
- P - POLE
- PH - PHASE
- PR. - PAIR
- SHLD. - SHIELDED
- S.S. - STAINLESS STEEL
- TYP. - TYPICAL
- V - VOLTS
- W - WIRE

ELECTRICAL SYMBOLS

- - HOMERUN TO PANEL
- ≡ - TICKS INDICATE NUMBER OF WIRES NOT INCLUDING GROUND
- ⊕ - JUNCTION BOX
- ⊙ - MOTOR
- ⊖ - THERMOSTAT

ELECTRICAL NOTES

1. SLANTED LETTERING INDICATES EXISTING EQUIPMENT.
2. PROVIDE A GREEN INSULATED GROUND WIRE IN ALL CONDUIT RUNS. GROUND WIRE SHALL BE #12 UNLESS NOTED OTHERWISE.



DISINFECTON BUILDING - ELECTRICAL PLAN

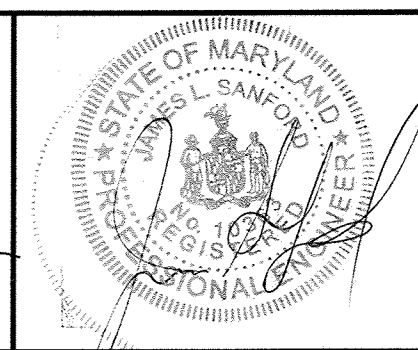


Plot Date: 02/17/2000 (KMARKLE:23,yof,k,dbdd)
 PRF: J:\proj\71805\cadd\elec\c12\805fel.dwg
 DGN: J:\proj\71805\cadd\elec\c12\805fel.dgn - LV11-63

DEPARTMENT OF PUBLIC WORKS
HOWARD COUNTY, MARYLAND

Robert Benjamin 5-31-00
CHIEF, BUREAU OF UTILITIES DATE

BUCHART HORN, INC.
Engineers, Architects and Planners



DES:				
DRN:				
CHK:				
DATE:	BY	NO.	REVISION	DATE

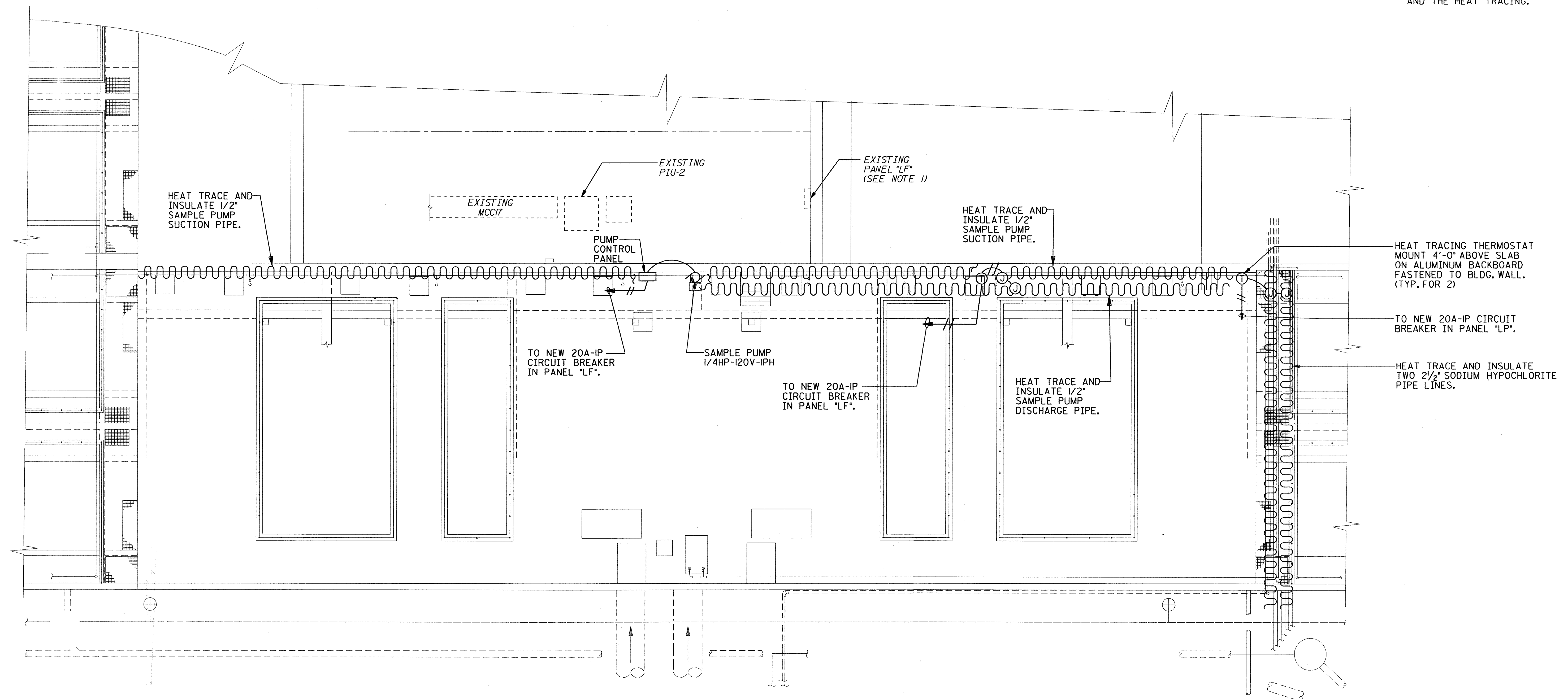
**DISINFECTON BUILDING
ELECTRICAL PLAN**

LITTLE PATUXENT WATER RECLAMATION PLANT
MULTIPLE IMPROVEMENTS
CHLORINATION / DECHLORINATION
CAPITAL PROJECT NO. S-6223
CONTRACT NO. 20-3837
ELECTION DISTRICT NO. 6
HOWARD COUNTY, MARYLAND

SCALE AS SHOWN
SHEET 9 OF 10
E-1

NOTES

1. PANEL "LF" IS A GE PANELBOARD. INSTALL THREE (3) 20A-1P CIRCUIT BREAKERS IN THIS PANEL TO FEED THE SAMPLE PUMP AND THE HEAT TRACING.



FLOCCULATION BASINS - ELECTRICAL PLAN



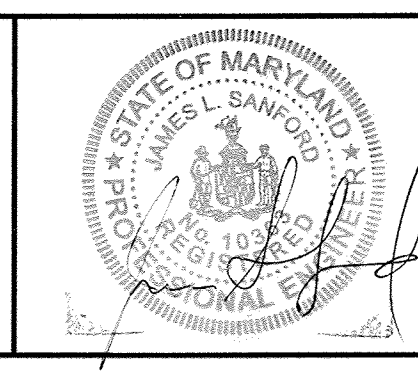
Plot Date: 02/17/2000 (KMARKLE:23.yor.k.dhbd)
 PRF: J:\proj\71805\cadd\elec\12\805fe2.dgn
 DGN: J:\proj\71805\cadd\elec\12\805fe2.dgn - LVH-63

DEPARTMENT OF PUBLIC WORKS
HOWARD COUNTY, MARYLAND

Robert Benning 5-31-00
CHIEF, BUREAU OF UTILITIES DATE

BUCHART HORN, INC.
Engineers, Architects and Planners

Henry Buchart



DES:					
DRN:					
CHK:					
DATE:	BY	NO.	REVISION	DATE	

**FLOCCULATION BASINS
ELECTRICAL PLAN**

LITTLE PATUXENT WATER RECLAMATION PLANT
MULTIPLE IMPROVEMENTS
CHLORINATION / DECHLORINATION
CAPITAL PROJECT NO. S-6223
CONTRACT NO. 20-3837
ELECTION DISTRICT NO. 6
HOWARD COUNTY, MARYLAND

SCALE AS SHOWN
SHEET 10 OF 10
E-2