

QUANTITIES

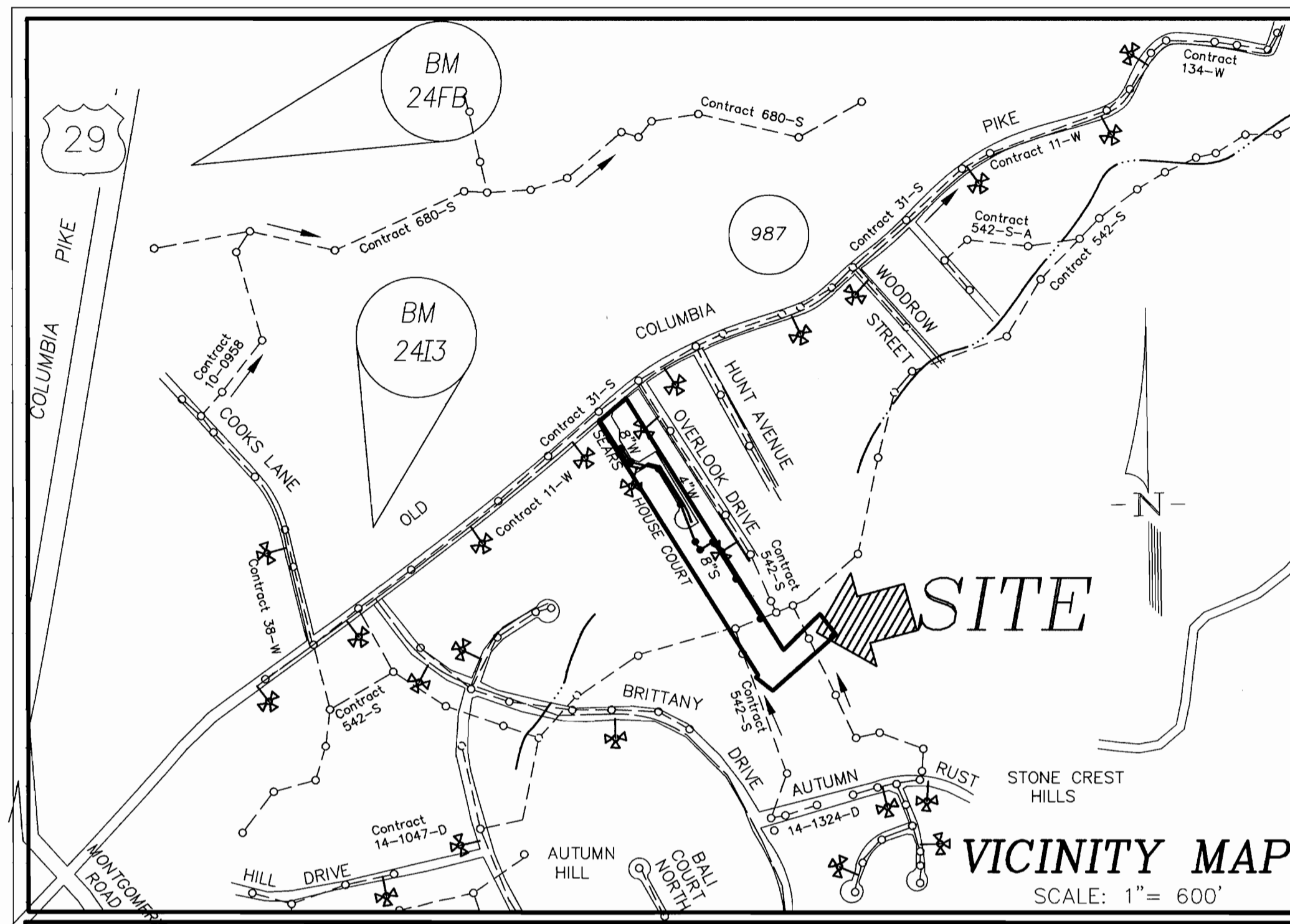
ITEM	QUANTITIES EST'D.	AS-BUILT	QUANTITIES	TYPE	SUPPLIER/MANUFACTURER
8" S (PVC)	1165 L.F.				
8" S (DIP) CL. 52					
4" MANHOLE	9				
4" SHC	10				
WHC	11				
8" W	31.3 L.F.				
6" W	21 L.F.				
4" W	4.39 L.F.				
F.H. and 6" V	1 EA.				
T.S. & 8" V	1 EA.				
4" CAP & BUTTRESS	1				
4" 1/8 HB	3				
8" 1/8 HB	1				
8"x4" REDUCER	1				
1 1/2" DRAIN	1				

NAME OF UTILITY CONTRACTOR: _____

CHECKBOX:
 AS-BUILT DATE: _____
 SURVEY AND DRAFTING DIVISION

WATER AND SEWER MAIN EXTENSION MILL TOWNE OVERLOOK

2nd ELECTION DISTRICT HOWARD COUNTY, MARYLAND CONTRACT NO. 14-3830-D



GENERAL NOTES:

- APPROXIMATE LOCATION OF EXISTING MAINS ARE SHOWN. THE CONTRACTOR SHALL TAKE ALL NECESSARY PRECAUTIONS TO PROTECT EXISTING MAINS AND SERVICES AND MAINTAIN UNINTERRUPTED SUPPLY. ANY DAMAGE INCURRED SHALL BE REPAIRED IMMEDIATELY TO THE SATISFACTION OF THE ENGINEER AT THE CONTRACTOR'S EXPENSE.
- ALL HORIZONTAL CONTROLS ARE BASED ON MARYLAND STATE COORDINATES.
- ALL VERTICAL CONTROLS ARE BASED ON U.S.G.S. DATUM.
- ALL PIPE ELEVATIONS SHOWN ARE INVERT ELEVATIONS.
- CLEAR ALL UTILITIES BY MINIMUM OF 6". CLEAR ALL POLES BY 2'-0" MINIMUM OR TUNNEL AS REQUIRED. THE OWNER HAS CONTACTED THE UTILITY COMPANIES AND HAS MADE ARRANGEMENTS FOR BRACING OF POLES AS SHOWN ON THE DRAWINGS. IN THE EVENT THE CONTRACTOR'S WORK REQUIRES THE BRACING OF ADDITIONAL POLES, A NOTE OR NOTES CONTAINING THE RESULTS OF THE TEST PIT OR PITS IS INCLUDED ON THE DRAWINGS. EXISTING UTILITIES IN THE VICINITY OF THE PROPOSED WORK FOR WHICH TEST PITS HAVE NOT BEEN DONE SHALL BE LOCATED BY THE CONTRACTOR TWO WEEKS IN ADVANCE OF CONSTRUCTION OPERATIONS AT HIS OWN EXPENSE.
- FOR DETAILS NOT SHOWN ON THE DRAWINGS, AND FOR MATERIALS AND CONSTRUCTION METHODS USE HOWARD COUNTY DESIGN MANUAL, VOLUME IV, STANDARD SPECIFICATIONS AND DETAILS FOR CONSTRUCTION (LATEST EDITION). THE CONTRACTOR SHALL HAVE A COPY OF VOLUME IV ON THE JOB.
- WHERE TEST PITS HAVE BEEN MADE ON EXISTING UTILITIES, THEY ARE NOTED BY SYMBOL AT THE LOCATION OF THE TEST PIT. A NOTE OR NOTES CONTAINING THE RESULTS OF THE TEST PIT OR PITS IS INCLUDED ON THE DRAWINGS. EXISTING UTILITIES IN THE VICINITY OF THE PROPOSED WORK FOR WHICH TEST PITS HAVE NOT BEEN DONE SHALL BE LOCATED BY THE CONTRACTOR TWO WEEKS IN ADVANCE OF CONSTRUCTION OPERATIONS AT HIS OWN EXPENSE.
- CONTRACTOR SHALL NOTIFY THE FOLLOWING UTILITY COMPANIES OR AGENCIES AT LEAST FIVE (5) WORKING DAYS BEFORE STARTING WORK SHOWN ON THESE PLANS:
 - STATE HIGHWAY ADMINISTRATION: 410-531-5533
 - BIG CONTRACTOR SERVICES: 410-850-4820
 - BIG UNDERGROUND DAMAGE CONTROL: 410-291-4607
 - MISS UTILITY: 410-800-257-7777
 - COLONIAL PIPELINE CO.: 410-549-4120
 - HOWARD COUNTY DEPARTMENT OF PUBLIC WORKS: 410-313-4900
 - BUREAU OF UTILITIES: 410-313-4900
 - BELL ATLANTIC: 410-446-5266
- TREES AND SHRUBS ARE TO BE PROTECTED FROM DAMAGE TO MAXIMUM EXTENT. TREES AND SHRUBS LOCATED WITHIN THE CONSTRUCTION STRIP ARE NOT TO BE REMOVED OR DAMAGED BY THE CONTRACTOR.
- CONTRACTOR SHALL REMOVE TREES, STUMPS AND ROOTS ALONG LINE OF EXCAVATION. PAYMENT FOR SUCH REMOVAL SHALL BE INCLUDED IN THE UNIT PRICE BID FOR CONSTRUCTION OF THE MAIN.
- THE CONTRACTOR SHALL NOTIFY THE BUREAU OF HIGHWAYS, HOWARD COUNTY, AT (410) 313-2450 AT LEAST FIVE (5) WORKING DAYS BEFORE ANY COUNTY ROAD OR BRIDGE/ARCHING OPERATION IN COUNTY ROADS FOR LAYING WATER/SEWER MAINS OR HOUSE CONNECTIONS. THE APPROVAL OF THESE DRAWINGS WILL CONSTITUTE COMPLIANCE WITH DPM REQUIREMENTS PER SECTION 16.114 (a) OF THE HOWARD COUNTY CODE.
- TEST PITS SHALL BE PERFORMED TO LOCATE THE EXISTING WATER, SEWER, GAS MAINS AND EX. SHC WHERE THE PROPOSED LINES CONNECT TO THE EXISTING MAINS. FIELD ADJUSTMENTS SHALL BE APPROVED BY HOWARD COUNTY DPM.

THE COORDINATES SHOWN HEREON ARE BASED UPON HOWARD COUNTY GEODETIC CONTROL WHICH IS BASED UPON THE MARYLAND STATE PLANE COORDINATE SYSTEM. HOWARD COUNTY MONUMENTS Nos. 24FB AND 2413.

24FB North 582652.103 East 1364255.930 Elev. 423.282

2413 North 580648.904 East 1364974.471 Elev. 404.481

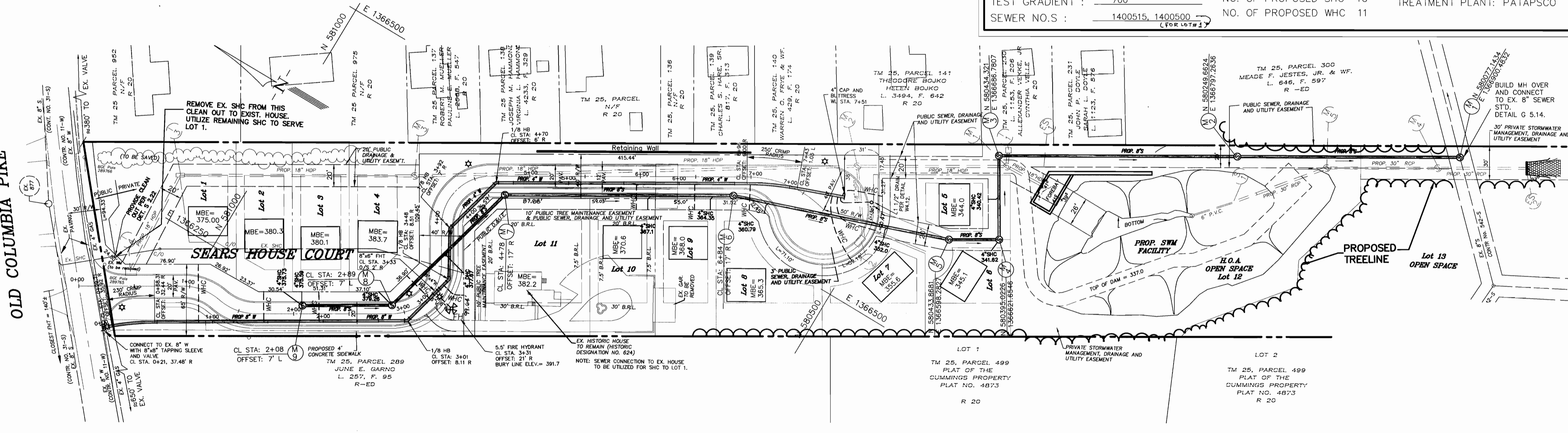
WATER AND SEWER CODE	COUNTY USE	NO. OF LOTS	13	TYPE OF BUILDING:	RESIDENTIAL
WATER NO. :	F 04	BUILDABLE LOTS	11	DRAINAGE AREA :	PATAPSCO
TEST GRADIENT :	700	NO. OF PROPOSED SHC	10	TREATMENT PLANT:	PATAPSCO
SEWER NO.S :	1400515, 1400500	NO. OF PROPOSED WHC	11		

SEWER NOTES:

- ALL SEWER MAINS SHALL BE DIP OR P.V.C. UNLESS OTHERWISE NOTED. ALL PROPOSED SHC'S ARE 4".
- ALL MANHOLES SHALL BE 4'-0" INSIDE DIAMETER UNLESS OTHERWISE NOTED.
- FORCE MAINS SHALL BE D.I.P. ONLY.
- MANHOLES SHOWN WITH 12" AND 16" WALLS ARE FOR BRICK MANHOLES ONLY.
- MANHOLES DESIGNATED W.T. IN PLAN AND PROFILE SHALL HAVE WATERIGHT FRAME AND COVERS, STANDARD DETAIL 05.52. WHERE WATERIGHT FRAME AND COVER IS USED, SET TOP OF FRAME 1" - 6" ABOVE FINISHED GRADE UNLESS OTHERWISE NOTED ON THE DRAWINGS.
- HOUSE (S) WITH THE SYMBOL "C.N.S." INDICATES THAT CELLAR CANNOT BE SERVED.
- ALL SEWER HOUSE CONNECTIONS ARE 2" UNLESS OTHERWISE NOTED ON PLANS.

WATER NOTES:

- ALL WATER MAINS TO BE D.I.P. CLASS 52 UNLESS OTHERWISE NOTED.
- TOPS OF ALL WATER MAINS TO HAVE A MINIMUM OF 3'-6" COVER UNLESS OTHERWISE NOTED.
- VALVES ADJACENT TO TREES SHALL BE STRAPPED TO TREES.
- ALL FITTINGS SHALL BE BUTTRESSED OR ANCHORED WITH CONCRETE IN ACCORDANCE WITH THE STANDARD DETAILS UNLESS OTHERWISE PROVIDED FOR ON THE DRAWINGS.
- FIRE HYDRANTS SHALL BE SET TO THE BURY LINE ELEVATIONS SHOWN ON THE DRAWINGS. ALL FIRE HYDRANTS SHALL BE RESTRAINED AND BUTTRESSED WITH CONCRETE IN ACCORDANCE WITH THE STANDARD DETAILS. SOIL AROUND THE FIRE HYDRANT SHALL BE COMPACTED IN ACCORDANCE WITH SECTION 1000 AND 1005 OF THE STANDARD SPECIFICATIONS.
- THE CONTRACTOR SHALL NOT OPERATE ANY WATER MAIN VALVES ON THE EXISTING WATER SYSTEM.
- ALL WATER HOUSE CONNECTIONS SHALL BE FOR INSIDE METER SETTING UNLESS OTHERWISE NOTED ON PLANS OR IN SPECIFICATIONS.
- ALL PROPOSED WATER HOUSE CONNECTIONS SHALL BE 1-INCH WITH 3/4 - INCH INSIDE METER SETTING.



WHC LOWERING SCHEDULE

LOT	DIST. OFF R.	WHC INV.
5	13'-23'	358.5
6	5'-16'	358.6
1 1/2" DRAIN	5'-10" FROM DRAIN	358.5

* THIS CHART SHOWS THE REQUIRED DIP IN THE WATER HOUSE CONNECTIONS/DRAIN TO PROVIDE THE MINIMUM CLEARANCE WITH THE PROPOSED STORM DRAIN.

SEDIMENT CONTROL MEASURES FOR THIS CONTRACT WILL BE IMPLEMENTED IN ACCORDANCE WITH SECTION 219 OF THE HOWARD COUNTY STANDARDS AND SPECIFICATIONS AND PER F-00-14

REVIEWED FOR HOWARD COUNTY SOIL CONSERVATION DISTRICT AND MEETS TECHNICAL REQUIREMENTS.
 Chief Simmons 4/25/00
 U.S. NATURAL RESOURCES CONSERVATION SERVICES

THIS DEVELOPMENT PLAN IS APPROVED FOR EROSION AND SEDIMENT CONTROL BY HOWARD COUNTY SOIL CONSERVATION DISTRICT.

APPROVED: J. M. Robertson 4/25/00
 HOWARD COUNTY SOIL CONSERVATION DISTRICT

DEPARTMENT OF PUBLIC WORKS
 HOWARD COUNTY, MARYLAND
 Michael A. Giovanniello 4/19/00
 CHEF, BUREAU OF UTILITIES

DEPARTMENT OF PLANNING & ZONING
 HOWARD COUNTY, MARYLAND
 [Signature] 4/25/00
 CHIEF, DEVELOPMENT ENGINEERING DIVISION

R.M. MOCHI GROUP, P.C.
 10120 A Old National Pike (301) 865-5858
 Jomsville, MD 21754-9706 Fax: (301) 865-5111

DES: P.F.B.					
DRN: K.M.B.					
CHK: R.M.M.					
PROJ. # 99011.20	by	no.	description	date	
DATE: 02-28-04			revisions		

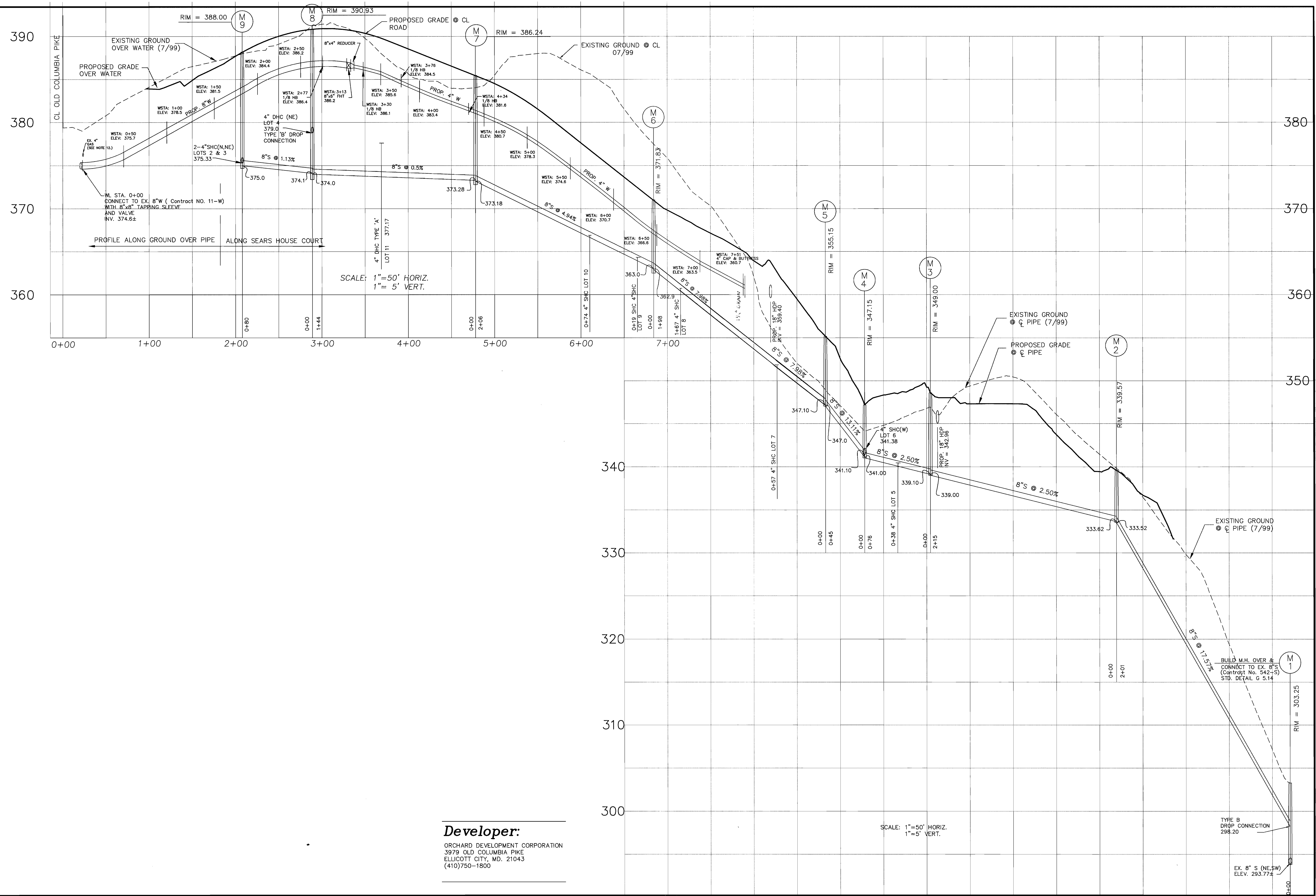
WATER AND SEWER MAIN
 PLAN AND PROFILE
 600' SCALE MAP NO. 24 BLOCK NO. _____

CONTRACT No. 14-3830-D
MILL TOWNE OVERLOOK
 LOTS 1-13
 ELECTION DISTRICT No. 2 HOWARD COUNTY, MD.

1" = 50'
 SHEET 1 OF 2



Developer:
 ORCHARD DEVELOPMENT CORPORATION
 3979 OLD COLUMBIA PIKE
 ELLICOTT CITY, MD. 21043
 (410) 750-1800



Developer:
 ORCHARD DEVELOPMENT CORPORATION
 3979 OLD COLUMBIA PIKE
 ELLICOTT CITY, MD. 21043
 (410)750-1800

DES:	P.F.B.		
DRN:	KMB/JMZ		
CHK:	R.M.M.		
PROJ. #	99011.20		
DATE:	02-28-00		
by	no.	description	date
		revisions	

**WATER AND SEWER MAIN
 PLAN AND PROFILE**

600' SCALE MAP NO. 24 BLOCK NO.

**CONTRACT No. 14-3830-D
 MILL TOWNE OVERLOOK**
 Lots 1-13
 ELECTION DISTRICT No. 2 HOWARD COUNTY, MD.

SCALE
 1" = 50'
 SHEET
 2 OF 2

DEPARTMENT OF PUBLIC WORKS
 HOWARD COUNTY, MARYLAND

Michael A. Diwanille 4/18/00
 CHIEF, BUREAU OF UTILITIES RMP DATE

DEPARTMENT OF PLANNING & ZONING
 HOWARD COUNTY, MARYLAND

John A. ... 4/18/00
 CHIEF, DEVELOPMENT ENGINEERING DIVISION DATE

R.M. MOCHI GROUP, P.C.
 CIVIL ENGINEERS
 LAND SURVEYORS
 PLANNING ENGINEERS

10120 A Old National Pike (301) 865-5858
 Gaithersburg, MD 20878-4706 Fax: (301) 865-5111

QUANTITIES

ITEM	QUANTITIES EST'D.	QUANTITIES	TYPE	AS-BUILT SUPPLIER/MANUFACTURER
8"S (PVC)	1165 L.F.	1,162 L.F.	SDR-35	FERGUSON/J-M MANUFACTURES
8"S (DIP) CL. 52				
4" MANHOLE	9	9		AMERICAST
4" SHC	10	10		
WHC	11	11		
8" W (D.I.P.)	313 L.F.	309 L.F.	CL-52	FERGUSON/GRIFFIN PIPE
6" W	21 L.F.	21 L.F.		
4" W	439 L.F.	434 L.F.		
F.H. and 6" V	1 EA.	1EA	B-84-B	" AMER. FLOW CTRL.
T.S. & 8" V	1 EA.	1EA		" TYLER PIPE/UNION FDI
4" CAP & BUTTRESS	1	1	D.I.P.	
4" 1/8 HB	3	3		
8" 1/8 HB	1	1		
8"x4" REDUCER	1	1		
1 1/2" DRAIN	1	1		

NAME OF UTILITY CONTRACTOR: **CHESAPEAKE SITE CONTRACTING**

CHECKBOX:
 AS-BUILT DATE: **DEC. 18, 2000**
 SURVEY AND DRAFTING DIVISION

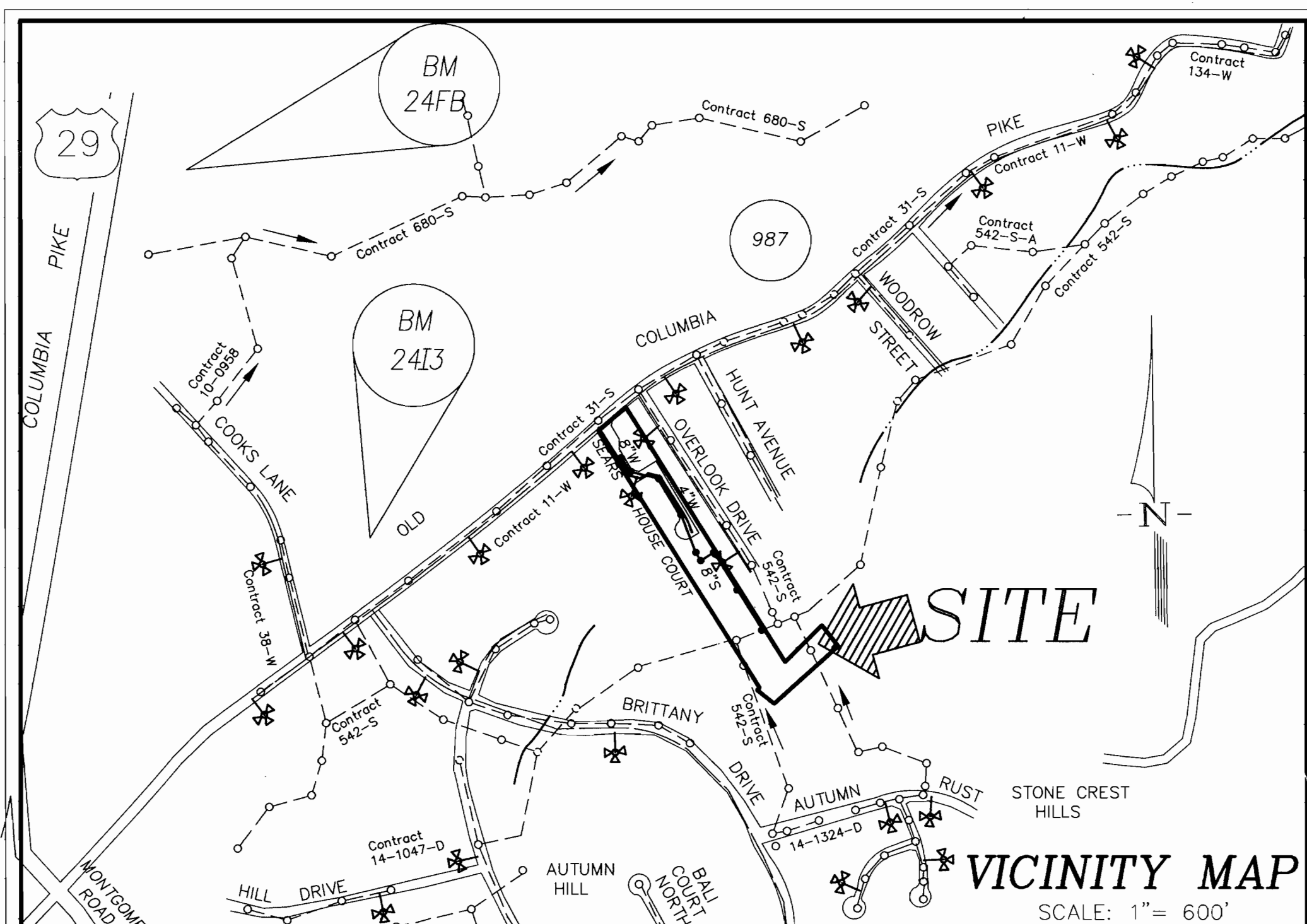
WATER AND SEWER MAIN EXTENSION

MILL TOWNE OVERLOOK

2nd ELECTION DISTRICT

HOWARD COUNTY, MARYLAND

CONTRACT NO. 14-3830-D



WATER AND SEWER CODE	COUNTY USE	NO. OF LOTS	13	TYPE OF BUILDING:	RESIDENTIAL
WATER NO. :	F 04	BUILDABLE LOTS	11	DRAINAGE AREA :	PATAPSCO
TEST GRADIENT :	700	NO. OF PROPOSED SHC	10	TREATMENT PLANT:	PATAPSCO
SEWER NO.S :	1400515, 1400500	NO. OF PROPOSED WHC	11		

GENERAL NOTES:

- APPROXIMATE LOCATION OF EXISTING MAINS ARE SHOWN. THE CONTRACTOR SHALL TAKE ALL NECESSARY PRECAUTIONS TO PROTECT EXISTING MAINS AND SERVICES AND MAINTAIN UNINTERRUPTED SUPPLY. ANY DAMAGE INCURRED SHALL BE REPAIRED IMMEDIATELY TO THE SATISFACTION OF THE ENGINEER AT THE CONTRACTOR'S EXPENSE.
- ALL HORIZONTAL CONTROLS ARE BASED ON MARYLAND STATE COORDINATES.
- ALL VERTICAL CONTROLS ARE BASED ON U.S.G.S. DATUM.
- ALL PIPE ELEVATIONS SHOWN ARE INVERT ELEVATIONS.
- CLEAR ALL UTILITIES BY MINIMUM OF 6". CLEAR ALL POLES BY 2'-0" MINIMUM OR TUNNEL AS REQUIRED. THE OWNER HAS CONTACTED THE UTILITY COMPANIES AND HAS MADE ARRANGEMENTS FOR BRACING OF POLES AS SHOWN ON THE DRAWINGS. THE CONTRACTOR SHALL BE RESPONSIBLE FOR BRACING OF ADDITIONAL POLES. ANY COST INCURRED BY THE OWNER FOR BRACING OF ADDITIONAL POLES OR DAMAGES SHALL BE DEDUCTED FROM MONEY OWED TO THE CONTRACTOR. THE CONTRACTOR SHALL COORDINATE WITH THE UTILITY COMPANIES TO SCHEDULE THE BRACING OF THE POLES.
- FOR DETAILS NOT SHOWN ON THE DRAWINGS, AND FOR MATERIALS AND CONSTRUCTION METHODS USE HOWARD COUNTY DESIGN MANUAL, VOLUME IV, STANDARD SPECIFICATIONS AND DETAILS FOR CONSTRUCTION (LATEST EDITION). THE CONTRACTOR SHALL HAVE A COPY OF VOLUME IV ON THE JOB.
- WHERE TEST PITS HAVE BEEN MADE ON EXISTING UTILITIES, THEY ARE NOTED BY SYMBOL AT THE LOCATION OF THE TEST PIT. A NOTE OR NOTES CONTAINING THE RESULTS OF THE TEST PIT OR PITS IS INCLUDED ON THE DRAWINGS. EXISTING UTILITIES IN THE VICINITY OF THE PROPOSED WORK FOR WHICH TEST PITS HAVE NOT BEEN DUG SHALL BE LOCATED BY THE CONTRACTOR TWO WEEKS IN ADVANCE OF CONSTRUCTION OPERATIONS AT HIS OWN EXPENSE.
- CONTRACTOR SHALL NOTIFY THE FOLLOWING UTILITY COMPANIES OR AGENCIES AT LEAST FIVE (5) WORKING DAYS BEFORE STARTING WORK SHOWN ON THESE PLANS:
 STATE HIGHWAY ADMINISTRATION 410-531-5533
 BGE CONTRACTOR SERVICES 410-850-4620
 BGE UNDERGROUND DAMAGE CONTROL 410-291-4607
 MISS. UTILITY 1-800-257-7777
 COLUMBIA PIPELINE CO. 1-800-257-7777
 HOWARD COUNTY DEPARTMENT OF PUBLIC WORKS 410-549-4120
 BUREAU OF UTILITIES 410-313-4900
 BELL ATLANTIC 1-800-445-5266
- TREES AND SHRUBS ARE TO BE PROTECTED FROM DAMAGE TO 10' MINIMUM EXTENT. TREES AND SHRUBS LOCATED WITHIN THE CONSTRUCTION STRIP ARE NOT TO BE REMOVED OR DAMAGED BY THE CONTRACTOR.
- CONTRACTOR SHALL REMOVE TREES, STUMPS AND ROOTS ALONG LINE OF EXCAVATION. PAYMENT FOR SUCH REMOVAL SHALL BE INCLUDED IN THE UNIT PRICE BID FOR CONSTRUCTION OF THE MAIN.
- THE CONTRACTOR SHALL NOTIFY THE BUREAU OF HIGHWAYS, HOWARD COUNTY, AT (410) 313-2450 AT LEAST FIVE (5) WORKING DAYS BEFORE ANY OPEN CUT OF ANY COUNTY ROAD OR BORING/JACKING OPERATION IN COUNTY ROADS FOR LAYING WATER/SEWER MAINS OR HOUSE CONNECTIONS. THE APPROVAL OF THESE DRAWINGS WILL CONSTITUTE COMPLIANCE WITH DPM REGULATIONS PER SECTION 18.14 (c) OF THE HOWARD COUNTY CODE.
- TEST PITS SHALL BE PERFORMED TO LOCATE THE EXISTING WATER, SEWER, GAS MAINS AND EX. SHC WHERE THE PROPOSED LINES CONNECT TO THE EXISTING MAINS. FIELD ADJUSTMENTS SHALL BE APPROVED BY HOWARD COUNTY DPM.

THE COORDINATES SHOWN HEREON ARE BASED UPON HOWARD COUNTY GEODETIC CONTROL WHICH IS BASED UPON THE MARYLAND STATE PLANE COORDINATE SYSTEM. HOWARD COUNTY MONUMENTS Nos. 24FB AND 2413.

24FB
 North 582652.103
 East 1364255.930
 Elev. 423.282

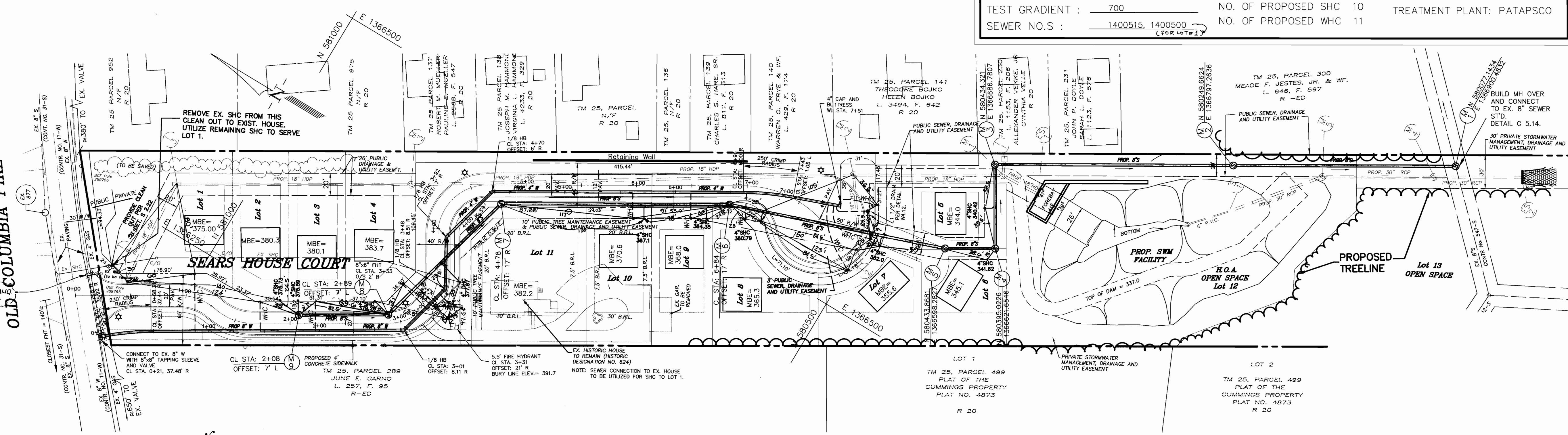
2413
 North 580648.904
 East 1364974.471
 Elev. 404.481

SEWER NOTES:

- ALL SEWER MAINS SHALL BE DIP OR P.V.C. UNLESS OTHERWISE NOTED. ALL PROPOSED SHC'S ARE 4".
- ALL MANHOLES SHALL BE 4'-0" INSIDE DIAMETER UNLESS OTHERWISE NOTED.
- FORCE MAINS SHALL BE D.I.P. ONLY.
- MANHOLES SHOWN WITH 12" AND 16" WALLS ARE FOR BRICK MANHOLES ONLY.
- MANHOLES DESIGNATED W.T. IN PLAN AND PROFILE SHALL HAVE WATERPROOF FRAME AND COVERS, STANDARD DETAIL 05.22. WHERE WATERPROOF FRAME AND COVER IS USED, SET TOP OF FRAME 1" - 6" ABOVE FINISHED GRADE UNLESS OTHERWISE NOTED ON THE DRAWINGS.
- HOUSE (S) WITH THE SYMBOL "C.N.S." INDICATES THAT CELLAR CANNOT BE SERVED.
- ALL SEWER HOUSE CONNECTIONS ARE 2" UNLESS OTHERWISE NOTED ON PLAN.

WATER NOTES:

- ALL WATER MAINS TO BE D.I.P. CLASS 52 UNLESS OTHERWISE NOTED.
- TOPS OF ALL WATER MAINS TO HAVE A MINIMUM OF 3'-6" COVER UNLESS OTHERWISE NOTED.
- VALVES ADJACENT TO TREES SHALL BE STRAPPED TO TREES.
- ALL FITTINGS SHALL BE BUTTRESSED OR ANCHORED WITH CONCRETE IN ACCORDANCE WITH THE STANDARD DETAILS UNLESS OTHERWISE PROVIDED FOR ON THE DRAWINGS.
- FIRE HYDRANTS SHALL BE SET TO THE BURY LINE ELEVATIONS SHOWN ON THE DRAWINGS. ALL FIRE HYDRANTS SHALL BE RESTRAINED AND BUTTRESSED WITH CONCRETE IN ACCORDANCE WITH THE STANDARD DETAILS. SOIL AROUND THE FIRE HYDRANT SHALL BE COMPACTED IN ACCORDANCE WITH SECTION 1000 AND 1005 OF THE STANDARD SPECIFICATIONS.
- THE CONTRACTOR SHALL NOT OPERATE ANY WATER MAIN VALVES ON THE EXISTING WATER SYSTEM.
- ALL WATER HOUSE CONNECTIONS SHALL BE FOR INSIDE METER SETTING UNLESS OTHERWISE NOTED ON PLANS OR IN SPECIFICATIONS.
- ALL PROPOSED WATER HOUSE CONNECTIONS SHALL BE 1-INCH WITH 3/4-INCH INSIDE METER SETTING.



WHC LOWERING SCHEDULE

LOT	DIST. OFF R.	WHC INV.
5	13'-23"	358.5
6	5'-16"	358.6
1 1/2" DRAIN	5'-10" FROM DRAIN	358.5

NOTE: ALL MEASUREMENTS ARE TAKEN FROM CENTER TO CENTER.

* THIS CHART SHOWS THE REQUIRED DIP IN THE WATER HOUSE CONNECTIONS/DRAIN TO PROVIDE THE MINIMUM CLEARANCE WITH THE PROPOSED STORM DRAIN.

SEDIMENT CONTROL MEASURES FOR THIS CONTRACT WILL BE IMPLEMENTED IN ACCORDANCE WITH SECTION 219 OF THE HOWARD COUNTY STANDARDS AND SPECIFICATIONS AND PER F-00-14

REVIEWED FOR HOWARD COUNTY SOIL CONSERVATION DISTRICT AND MEETS TECHNICAL REQUIREMENTS.
Chief Supervisor 4/25/00
 U.S. NATURAL RESOURCES CONSERVATION SERVICES DATE

THIS DEVELOPMENT PLAN IS APPROVED FOR EROSION AND SEDIMENT CONTROL BY HOWARD COUNTY SOIL CONSERVATION DISTRICT.

APPROVE: *John M. K... 4/25/00*
 HOWARD COUNTY SOIL CONSERVATION DISTRICT DATE

DEPARTMENT OF PUBLIC WORKS
 HOWARD COUNTY, MARYLAND

Michael A. D... 4/16/00
 RMB DATE

DEPARTMENT OF PLANNING & ZONING
 HOWARD COUNTY, MARYLAND

John A. G... 4/15/00
 DATE

R.M. MOCHI GROUP, P.C.

20120 A Old National Pike (301) 865-5858
 Jomsville, MD 21754-9706 Fax: (301) 865-5111

DES:	P.F.B.				
DRN:	K.M.B.				
CHK:	R.M.M.	K01	2	AS-BUILT CONDITIONS ADDED TO PLAN	5/8/01
PROJ. #	99011.20	K01	1	AS-BUILT CONDITIONS ADDED TO PLAN	3/01
DATE:	02-28-00	by	no.	description	date
				revisions	

WATER AND SEWER MAIN
 PLAN AND PROFILE

600' SCALE MAP NO. 24 BLOCK NO.

CONTRACT No. 14-3830-D
MILL TOWNE OVERLOOK
 LOTS 1-13

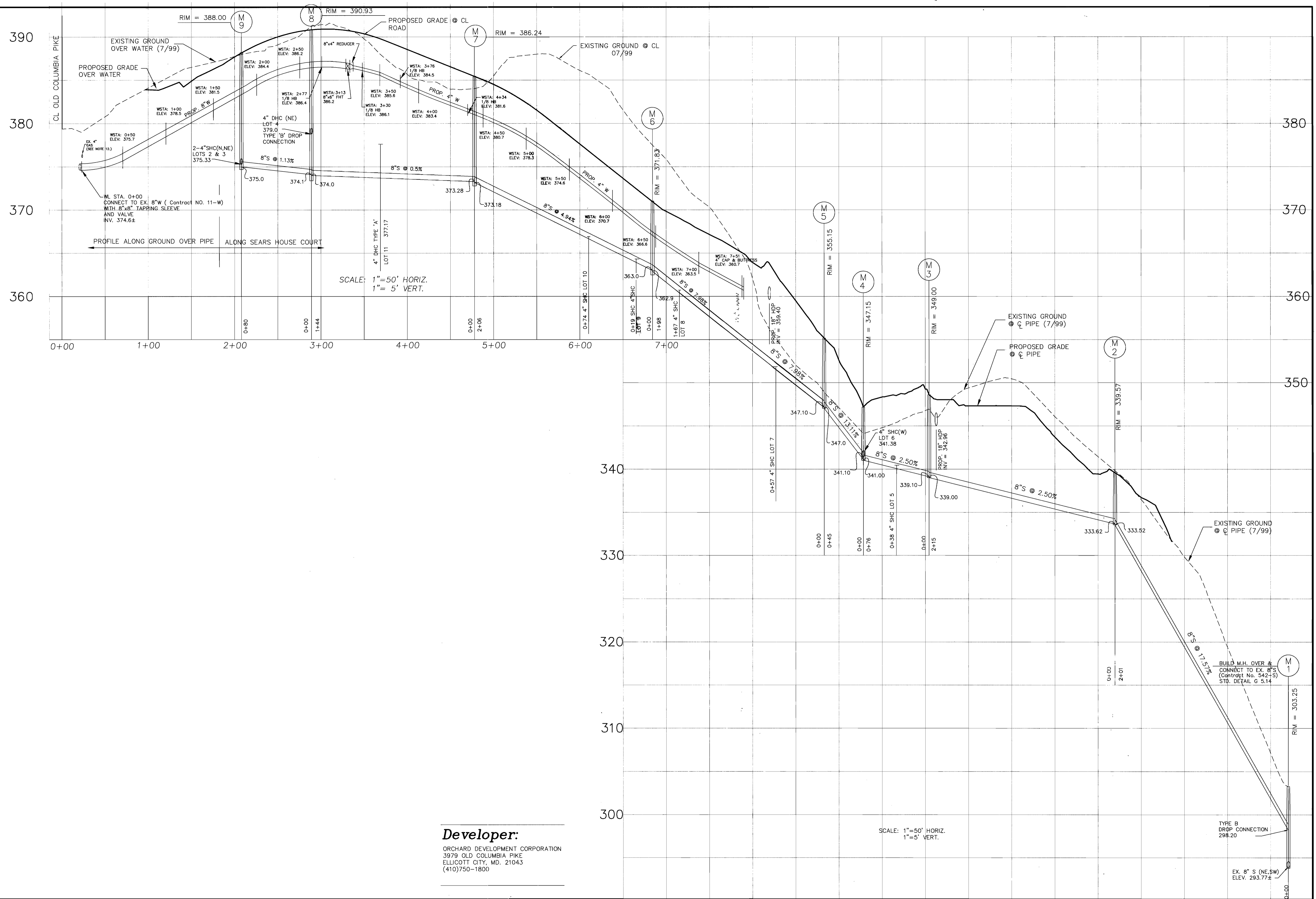
ELECTION DISTRICT No. 2 HOWARD COUNTY, MD.

1" = 50'

SHEET 1 OF 2



Developer:
 ORCHARD DEVELOPMENT CORPORATION
 3979 OLD COLUMBIA PIKE
 ELLICOTT CITY, MD. 21043
 (410)750-1800



SCALE: 1" = 50' HORIZ.
1" = 5' VERT.

SCALE: 1" = 50' HORIZ.
1" = 5' VERT.

Developer:
ORCHARD DEVELOPMENT CORPORATION
3979 OLD COLUMBIA PIKE
ELLCOTT CITY, MD. 21043
(410)750-1800

DEPARTMENT OF PUBLIC WORKS
HOWARD COUNTY, MARYLAND
Richard A. Bonanni 4/18/00
CHIEF, BUREAU OF UTILITIES RMP DATE

DEPARTMENT OF PLANNING & ZONING
HOWARD COUNTY, MARYLAND
John A. ... 4/18/00
CHIEF, DEVELOPMENT ENGINEERING DIVISION DATE

R.M. MOCHI GROUP, P.C.
PLANNING ENGINEERS AND SURVEYORS
10120 A Old National Pike
Jjansville, MD 21754-9706 (301) 865-5958
Fax: (301) 865-5111

DES: P.F.B.					
DRN: KMB/JMZ					
CHK: R.M.M.					
PROJ: #99011.20					
DATE: 02-28-00	by	no.	description	date	
			revisions		

**WATER AND SEWER MAIN
PLAN AND PROFILE**
600' SCALE MAP NO. 24 BLOCK NO.

CONTRACT No. 14-3830-D
MILL TOWNE OVERLOOK
LOTS 1-13
ELECTION DISTRICT No. 2 HOWARD COUNTY, MD.

SCALE
1" = 50'
SHEET
2 OF 2