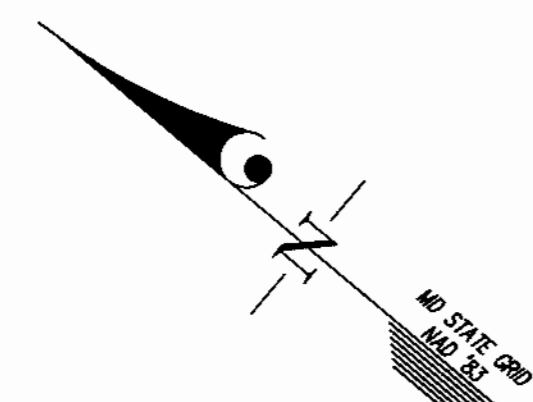


MARYLAND ROUTE 108
(100' PUBLIC R/W)
M.S.H.A. R/W PLAT Nos. 12453 & 12454

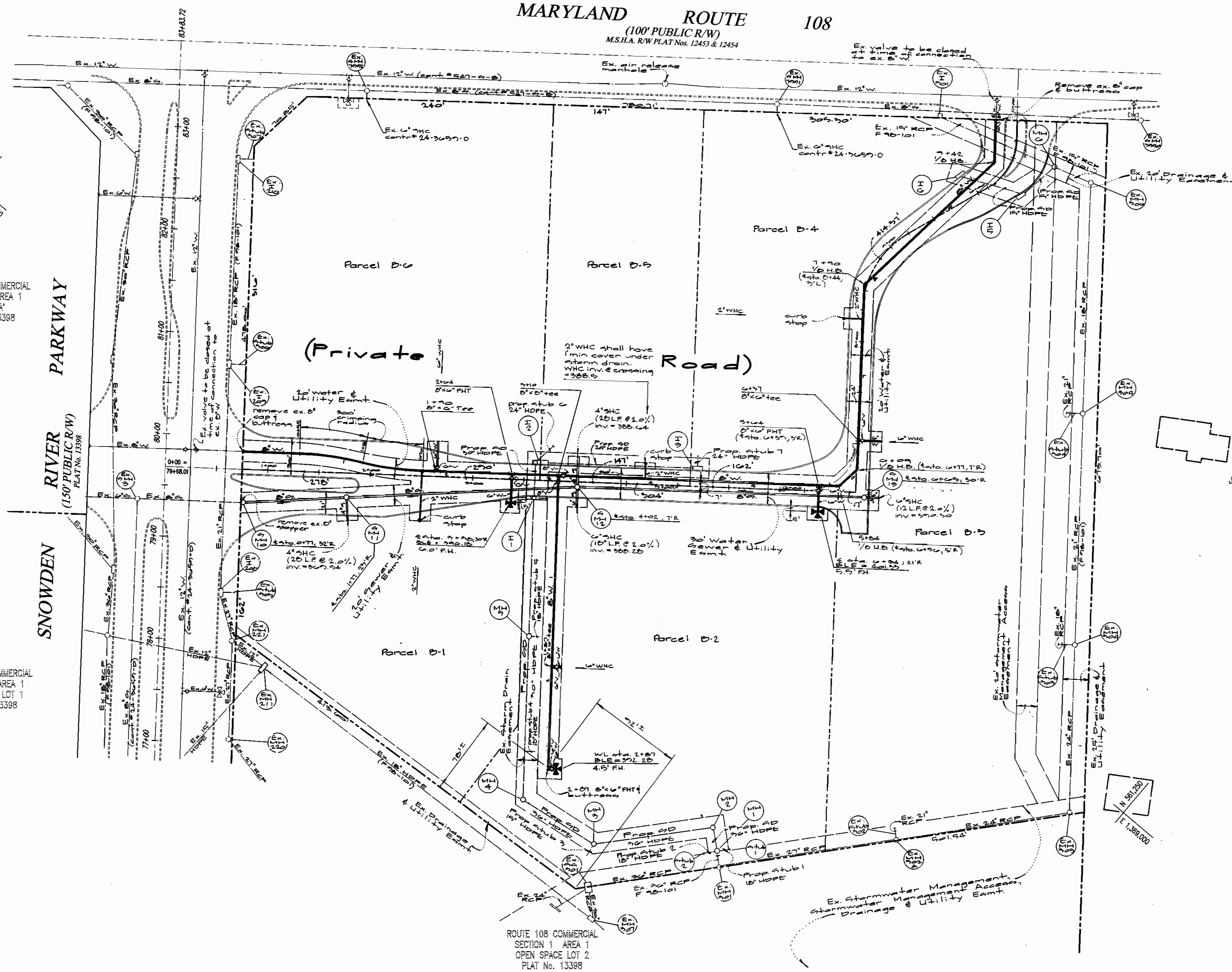


ROUTE 108 COMMERCIAL
SECTION 1 AREA 1
PARCEL 'A'
PLAT No. 13398

ROUTE 108 COMMERCIAL
SECTION 1 AREA 1
OPEN SPACE LOT 1
PLAT No. 13398

ROUTE 108 COMMERCIAL
SECTION 1 AREA 1
OPEN SPACE LOT 2
PLAT No. 13398

N/F PROPERTY OF
JOSEPH L. & SHIRLEY I. POITEE
L. 516 F. 196



DEPARTMENT OF
PUBLIC WORKS
HOWARD COUNTY, MARYLAND

Richard Benjamin 11-29-99
CHIEF, BUREAU OF UTILITIES DATE

DEPARTMENT OF
PLANNING AND ZONING
HOWARD COUNTY, MARYLAND

Michael Dorman 12/2/99
CHIEF, DEVELOPMENT ENGINEERING DIVISION DATE

GLW GUTSCHICK LITTLE & WEBER, P.A.
CIVIL ENGINEERS, LAND SURVEYORS, LAND PLANNERS, LANDSCAPE ARCHITECTS
3909 NATIONAL DRIVE - SUITE 250 - BURTNSVILLE OFFICE PARK
BURTONSVILLE, MARYLAND 20866
TEL: 301-421-4024 BALT: 410-880-1820 DC/VA: 301-988-2524 FAX: 301-421-4188



DES: FMM				
DRN: KLF				
CHK: DEV				
DATE: Oct 1999	BY: NO	REVISION	DATE	

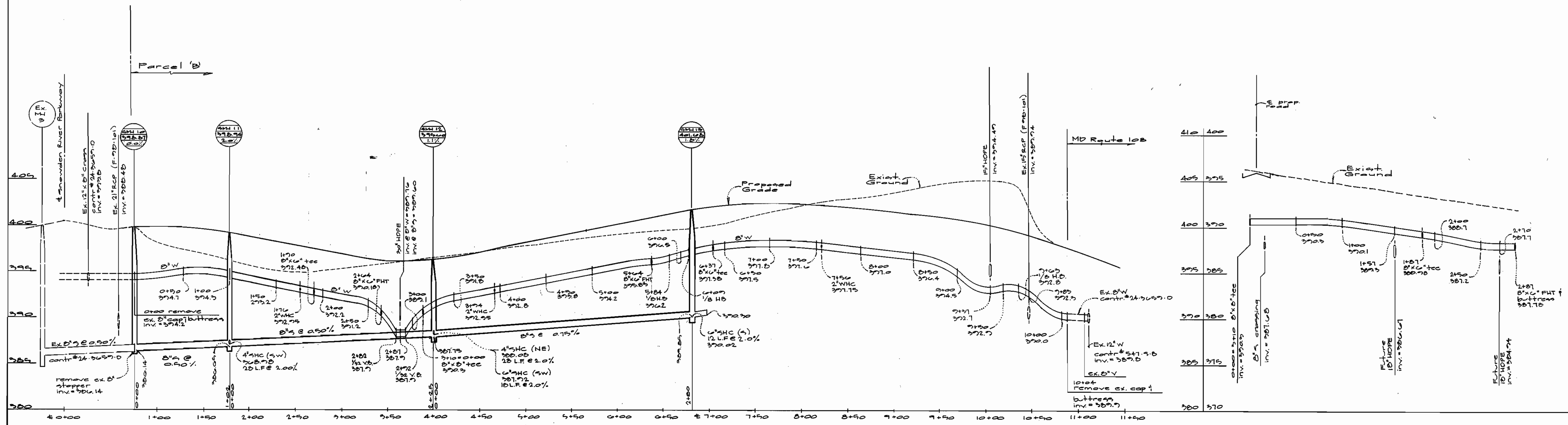
Plan
Water & Sewer
Scale: 1" = 50'

600' SCALE MAP NO. 37 BLOCK NO. 1-7

Route 108 Commercial
Section 1 Area 1
Water and Sewer Extension to
Parcels B-1 thru B-6, Snowden River Pkwy.
Contract No. 24-9813-D
Guilford Election District No. 6 Howard County, Maryland

SCALE
AS
SHOWN

SHEET
2 OF 3



Department of Public Works
Howard County, Maryland

Robert M. Benjamin
Chief, Bureau of Utilities

11-29-99
Date

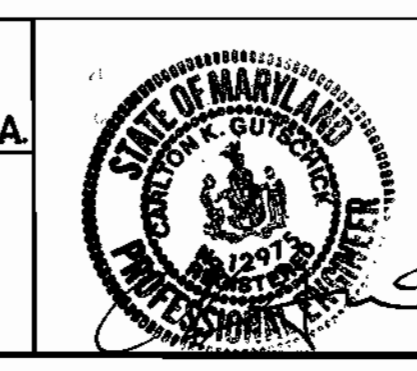
Department of Planning & Zoning
Howard County, Maryland

William J. ...
Chief Development Engineering Division

12/2/99
Date

GW GUTSCHICK LITTLE & WEBER, P.A.
ENGINEERS, PLANNERS, SURVEYORS

3909 NATIONAL DRIVE, SUITE 200, BURTCHVILLE OFFICE PARK
BURTCHVILLE, MD. 20866
(301) 421-4024



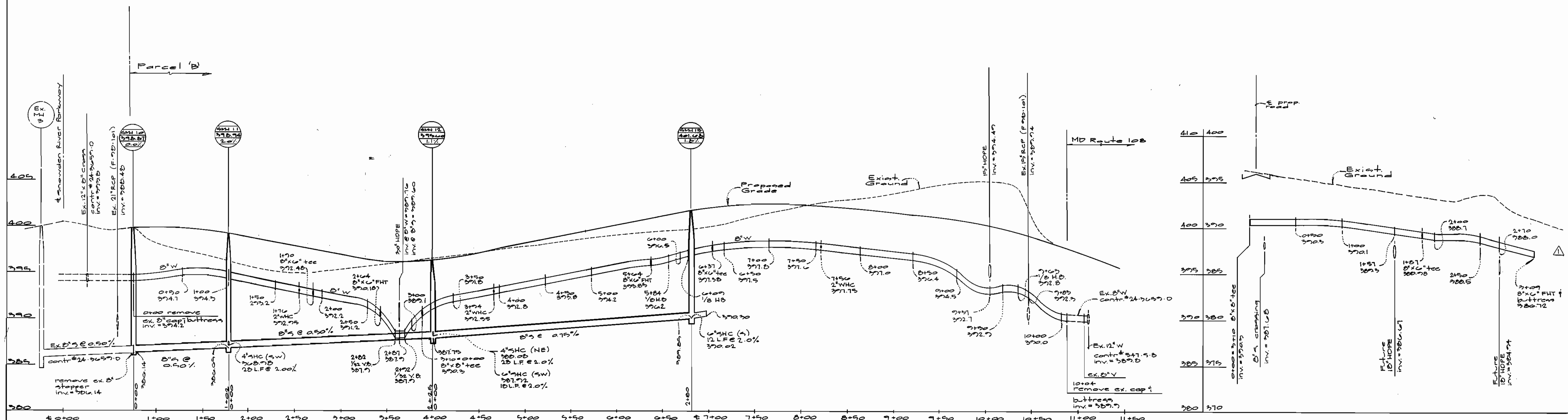
DES:	
DRN:	
CHK:	
DATE:	
BY NO.	
REVISION	

Water & Sewer Profiles
scales: 1" = 90' horiz.
1" = 5' vert.

600' SCALE MAP NO. 37 BLOCK NO. 1-7

Route 108 Commercial
Section 1 Area 1
Water and Sewer Extension to
Parcel B-1 thru B-6, Snowden River Pkwy.
Contract No. 24-3813-D
Suiford Election District No. 6 Howard County, Maryland

SCALE AS SHOWN
SHEET 2 OF 3



Department of Public Works
Howard County, Maryland

Robert W. Benjamin
Chief, Bureau of Utilities

11-29-99
Date

Department of Planning & Zoning
Howard County, Maryland

Thomas J. ...
Chief Development Engineering Division

12/2/99
Date

GW GUTSCHICK LITTLE & WEBER, P.A.
ENGINEERS, PLANNERS, SURVEYORS

3909 NATIONAL DRIVE - SUITE 250 - BURTORSVILLE OFFICE PARK
BURTORSVILLE, MD 20986
(301) 421-4024



DES:		⚠ Review watermain profiles to extend 8' w/ an additional 22'.
DRN:		
CHK:		
DATE:		
BY:	NO.	REVISION
DATE:		

Water & Sewer Profiles
scales: 1" = 90' horiz.
1" = 5' vert.

600' SCALE MAP NO. 27 BLOCK NO. 1-7

Route 10B Commercial Section 1 Area 1
Water and Sewer Extension to Parcels B-1 thru B-6, Snowden River Pkwy.
Contract No. 24-3813-D

Guilford Election District No. 6 Howard County, Maryland

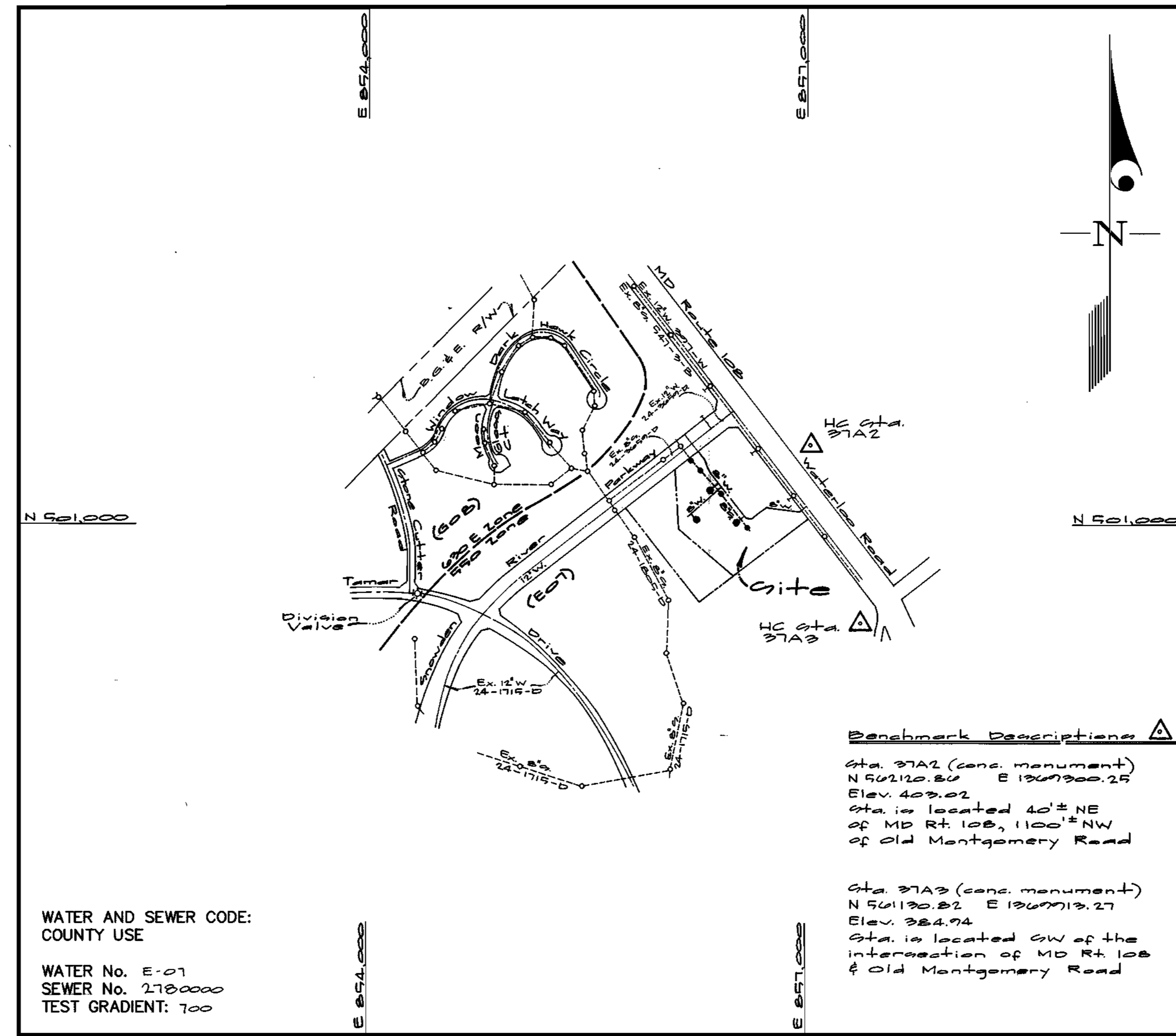
SCALE AS SHOWN
SHEET 2 OF 3

QUANTITIES				
ITEMS	QUANTITIES ESTIMATED	AS-BUILT		
		QUANTITIES	TYPE	MANUFACTURER/SUPPLIER
2" W/C	84 L.F.	84 L.F.	TYPE K	CAMBRIDGE CEE CONCRETE SALES
6" Water	124 L.F.	132 L.F.	TYTON CL 50	CAIFORN PIPE PRODUCTS
8" Water	1217 L.F.	1227 L.F.	TYTON CL 50	"
Fire hydrants	3 Ea.	3 EA	C 802	KENNEDY MANUFACTURING CORPORATION
8" x 8" FHT	3 Ea.	3 EA	HT 0153/153	TALOR MANUFACTURING CORPORATION
8" x 8" tee	1 Ea.	1 EA	M.J.C 500	HEBERD MANUFACTURING CORPORATION
6" Valve	3 Ea.	3 EA	M.J.C 500	HEBERD MANUFACTURING CORPORATION
8" Valve	2 Ea.	2 EA	M.J.C 500	"
8" x 6" tee	3 Ea.	3 EA	"	"
4" S/H	50 L.F.	56 L.F.	P.V.C. SDR-35	J.M. MONTGOMERY CONTRACTOR SALES
6" Sewer	30 L.F.	30 L.F.	P.V.C. SDR-35	"
8" Sewer	607 L.F.	630 L.F.	P.V.C. SDR-35	"
4" Std. Manholes	4 Ea.	4 EA	STD. SANITARY	ATLANTIC CONCRETE PRODUCTS

NAME OF UTILITY CONTRACTOR: _____

SURVEY AND DRAFTING DIV. CHECKBOX: _____ AS-BUILT DATE: _____

TYPE OF BUILDING	N/A
NUMBER OF UNITS	N/A
NUMBER OF S.H.C.'s	4
NUMBER OF W.H.C.'s	6
DRAINAGE AREA	Little Patuxent
TREATMENT PLANT	Little Patuxent Water Reclamation Plant



VICINITY MAP
SCALE: 1"=600'

CONTRACT No. 24 - 3813 - D
Route 108 Commercial
HOWARD COUNTY, MARYLAND
DEPARTMENT OF PUBLIC WORKS

GENERAL NOTES

- PART I
- Approximate location of existing mains are shown. The contractor shall take all necessary precautions to protect existing mains and services and maintain uninterrupted supply. Any damage incurred shall be repaired immediately to the satisfaction of the Engineer at the Contractor's expense.
 - All horizontal controls are based on Maryland State Coordinates [North American Datum 1983 (NAD '83)].
 - All vertical controls are based on U.S.G.S. data.
 - All pipe elevations shown are invert elevations.
 - Clear all utilities by a minimum of 6". Clear all poles by 2'-0" minimum or tunnel as required. The owner has contacted the utility companies and has made arrangements for bracing of poles as shown on the drawings. In the event the contractor's work requires the bracing of additional poles or damages shall be deducted from money owed the contractor. The contractor shall coordinate with the utility companies to schedule the bracing of the poles.
 - For details not shown on the drawings, and for materials and construction methods use Howard County Design Manual, Volume IV, Standard Specifications and Detail for Construction (Latest Edition). The contractor shall have a copy of Volume IV on the job.
 - Where test pits have been made on existing utilities, they are noted by the symbol \oplus at the location of the test pit. A note or notes containing the results of the test pit or pits is included on the drawings. Existing utilities in the vicinity of the proposed work for which test pits have not been dug shall be located by the contractor two weeks in advance of construction operations at his own expense.
 - Contractor shall notify the following utility companies or agencies at least (5) working days before starting work shown on these plans:

State Highway Administration	531-5533
BGE Contractor Services	850-4620
BGE Under Ground Damage Control	787-9068
Miss Utility	1-800-257-7777
Colonial Pipeline Co.	795-1390
Howard County Department of Public Works Bureau of Utilities	313-4900
 - Trees and shrubs are to be protected from damage to maximum extent. Trees and shrubs located within the construction strip are not to be removed or damaged by the contractor.
 - Contractor shall remove trees, stumps and roots along line of excavation. Payment for such removal shall be included in the unit price bid for construction of the main.
 - The contractor shall notify the Bureau of Highways, Howard County, at (410) 313-2450 at least five (5) working days before any open cut or any County road or boring/jacking operation on County roads for laying water/sewer mains or house connections. The approval of these drawings will constitute compliance with DPW requirement per Section 18.114(a) of the Howard County Code.
- PART II - WATER
- All water mains to be D.I.P. Class 52 unless otherwise noted.
 - Tops of all water mains to have a minimum of 3-1/2' cover unless otherwise noted.
 - Valves adjacent to tees shall be strapped to tees.
 - All fittings shall be buttressed or anchored with concrete in accordance with the Standard Details unless otherwise provided for on the drawings.
 - Fire hydrants shall be set to the bury line elevations shown on the drawings. All fire hydrants shall be restrained and buttressed with concrete in accordance with the Standard Details. Soil around the fire hydrant shall be compacted in accordance with Section 1000 and 1005 of the Standard Specifications.
 - The contractor shall not operate any water main valves on the existing water system.
 - All water house connections shall be for inside meter setting unless otherwise noted on plans or in specifications.
 - For sprinkler system for all townhomes or multi-family dwelling units should have a minimum of 1' connection with a 3/4" meter.
- PART III - SEWER
- All sewer mains shall be DIP and P.V.C. unless otherwise noted.
 - All manholes shall be 4' - 0" inside diameter unless otherwise noted.
 - Force mains shall be D.I.P. only.
 - Manholes shown with 12" and 16" walls are for brick manholes only.
 - Manholes designated W.T. in plan and profile shall have watertight frame and covers, Standard Detail G5.52. Where watertight frame and cover is used, set top of frame 1'-6" above finished grade unless otherwise noted on drawings.
 - House(s) with the symbol "C.N.S." indicates that cellar cannot be served.

Sediment Control Measures will be implemented in accordance with Section 219 of the Specifications & with Road Drawings Plan 500-44; Drawings 4-4c for Sediment & Erosion Control.

REVIEWED FOR HOWARD SOIL CONSERVATION DISTRICT AND MEETS TECHNICAL REQUIREMENT.
Chief Simmons 2/1/99
U.S.D.A. NATIONAL RESOURCES CONSERVATION SERVICE
THIS DEVELOPMENT PLAN IS APPROVED FOR SOIL EROSION AND SEDIMENT CONTROL BY THE HOWARD SOIL CONSERVATION DISTRICT.
APPROVED: *John Robertson* 12/1/99
HOWARD S.C.D. Date

DEPARTMENT OF PUBLIC WORKS
HOWARD COUNTY, MARYLAND
Robert M. Reinger 11-29-99
CHIEF, BUREAU OF UTILITIES DATE

DEPARTMENT OF PLANNING AND ZONING
HOWARD COUNTY, MARYLAND
John Simmons 12/2/99
CHIEF, DEVELOPMENT ENGINEERING DIVISION DATE

GLW GUTSCHICK LITTLE & WEBER, P.A.
CIVIL ENGINEERS, LAND SURVEYORS, LAND PLANNERS, LANDSCAPE ARCHITECTS
3909 NATIONAL DRIVE - SUITE 250 - BURTONSVILLE OFFICE PARK
BURTONSVILLE, MARYLAND 20866
TEL: 301-421-4024 BALT: 410-880-1820 DC/VA: 301-989-2524 FAX: 301-421-4186



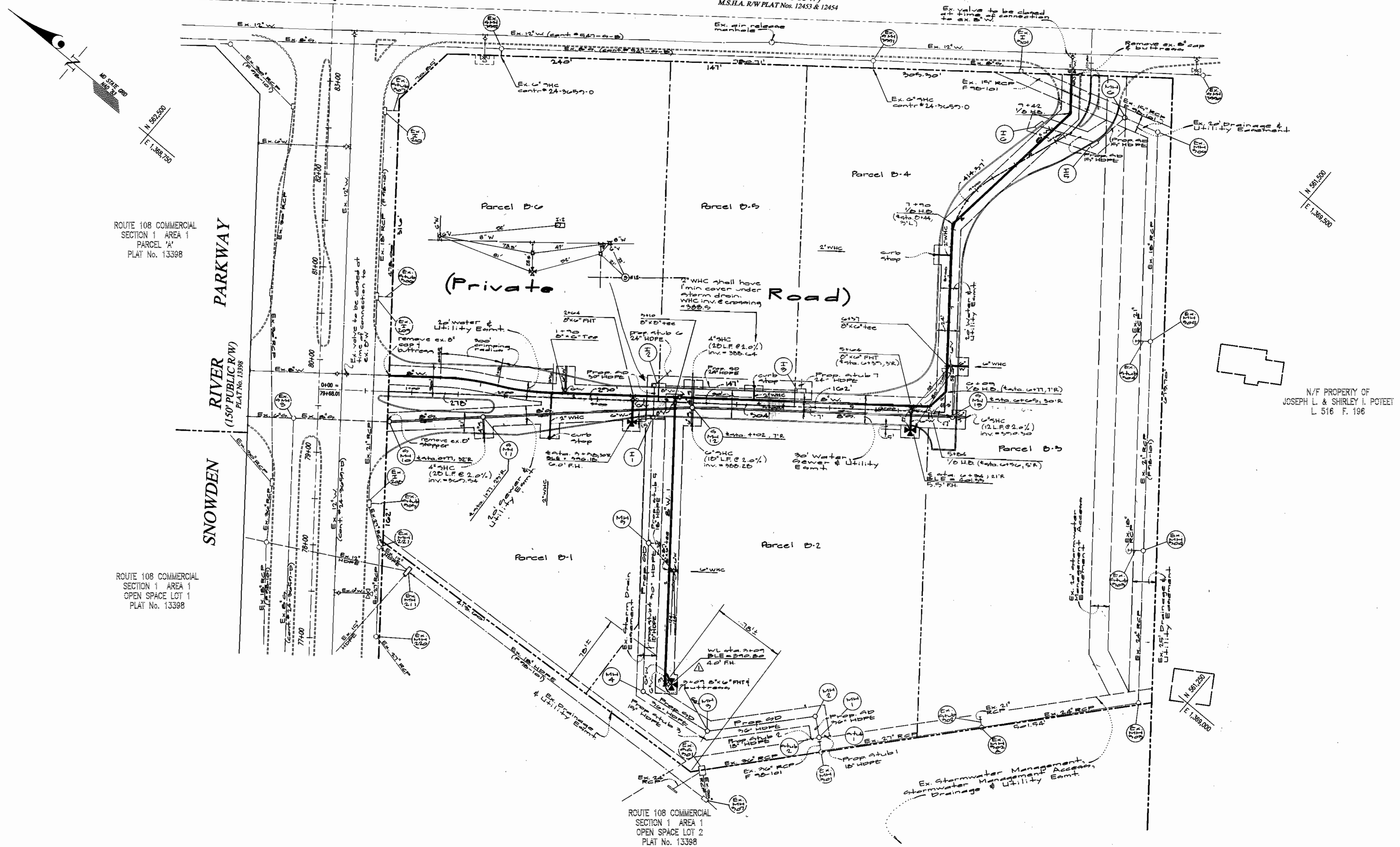
DES: FMM	FMM	Rev. 2nd quantity per calculation of E.H. on parcel B-2	2/1/00
DRN: KLP			
CHK: DEV			
DATE: Oct. 1999	KRT	AS-BUILT CONDITIONS ADDED TO PLAN	04/03/00
	BY NO	REVISION	DATE

Cover sheet
600' SCALE MAP NO. 37 BLOCK NO. 1-7

Route 108 Commercial
Section 1 Area 1
Water and Sewer Extension to Parcels B-1 thru B-6, Snowden River Pkwy.
Contract No. 24-3813-D
Gulford Election District No. 6 Howard County, Maryland

GLW FILE No. 97009
SHEET 1 OF 3

MARYLAND ROUTE 108
(100' PUBLIC R/W)
M.S.H.A. R/W PLAT Nos. 12453 & 12454



ROUTE 108 COMMERCIAL
SECTION 1 AREA 1
PARCEL 'A'
PLAT No. 13398

ROUTE 108 COMMERCIAL
SECTION 1 AREA 1
OPEN SPACE LOT 1
PLAT No. 13398

ROUTE 108 COMMERCIAL
SECTION 1 AREA 1
OPEN SPACE LOT 2
PLAT No. 13398

N/F PROPERTY OF
JOSEPH L. & SHIRLEY I. POTTEE
L 516 F. 196

DEPARTMENT OF
PUBLIC WORKS
HOWARD COUNTY, MARYLAND

DEPARTMENT OF
PLANNING AND ZONING
HOWARD COUNTY, MARYLAND

GLW GUTSCHICK LITTLE & WEBER, P.A.
CIVIL ENGINEERS, LAND SURVEYORS, LAND PLANNERS, LANDSCAPE ARCHITECTS
3909 NATIONAL DRIVE - SUITE 250 - BURTNSVILLE OFFICE PARK
BURTNSVILLE, MARYLAND 20886
TEL: 301-421-4024 FAX: 301-989-2524



DES: FMM	Rev. FH location on Parcel B-6
DRN: KLF	
CHK: DEV	
DATE: 04/09/00	ASBUILT CONDITIONS ADDED TO PLAN
BY: NO	REVISION

Plan
Water & Sewer
Scale: 1" = 50'

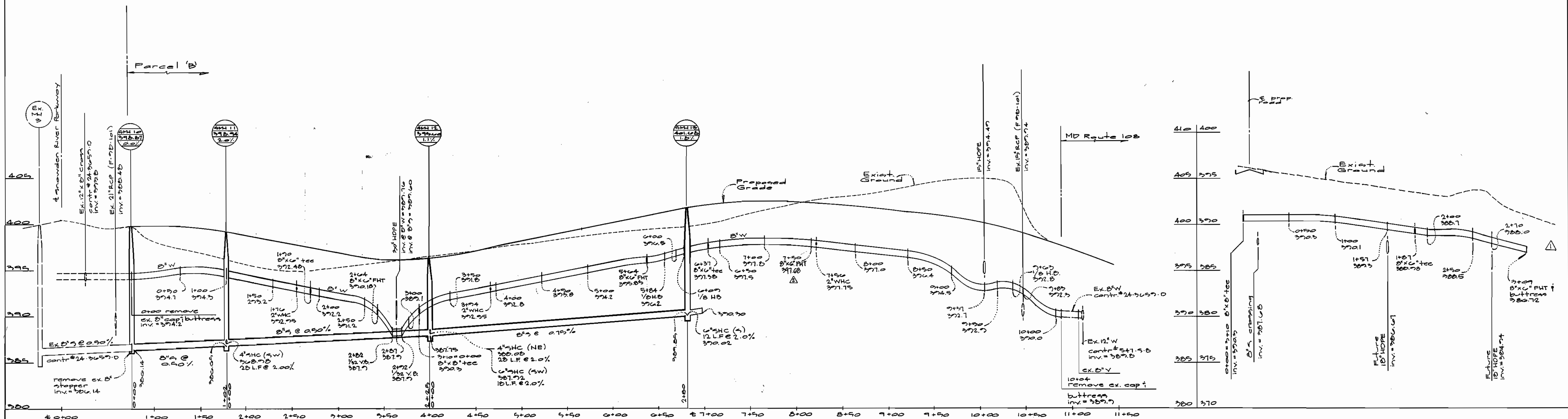
Route 108 Commercial
Section 1 Area 1
Water and Sewer Extension to
Parcels B-1 thru B-6, Snowden River Pkwy.
Contract No. 24-3813-D
Gulport Election District No. 6 Howard County, Maryland

SCALE
AS
SHOWN

SHEET
2 OF 3

Robert M. Bennett 11-29-99
CHIEF, BUREAU OF UTILITIES DATE

John P. Bennett 12/2/99
CHIEF, DEVELOPMENT ENGINEERING DIVISION DATE



Department of Public Works
Howard County, Maryland

Robert J. Bevington
Chief, Bureau of Utilities

11-29-99
Date

Department of Planning & Zoning
Howard County, Maryland

[Signature]
Chief, Development Engineering Division

12/1/99
Date

GLW GUTSCHICK LITTLE & WEBER, P.A.
ENGINEERS, PLANNERS, SURVEYORS

3909 NATIONAL DRIVE, SUITE 250 - BURTONSVILLE OFFICE PARK
BURTONSVILLE, MD. 20866
(301) 421-4024



DES:	f.m.m.	△	Revise watermain profile to extend	4/6/00
DRN:	m.c.f.	△	Add 8'-6" FHT @ Sta. 7+50	5/3/00
CHK:				
DATE:	BY	N.O.	REVISION	DATE

Water & Sewer Profiles
Scales: 1" = 50' horiz.
1" = 5' vert.

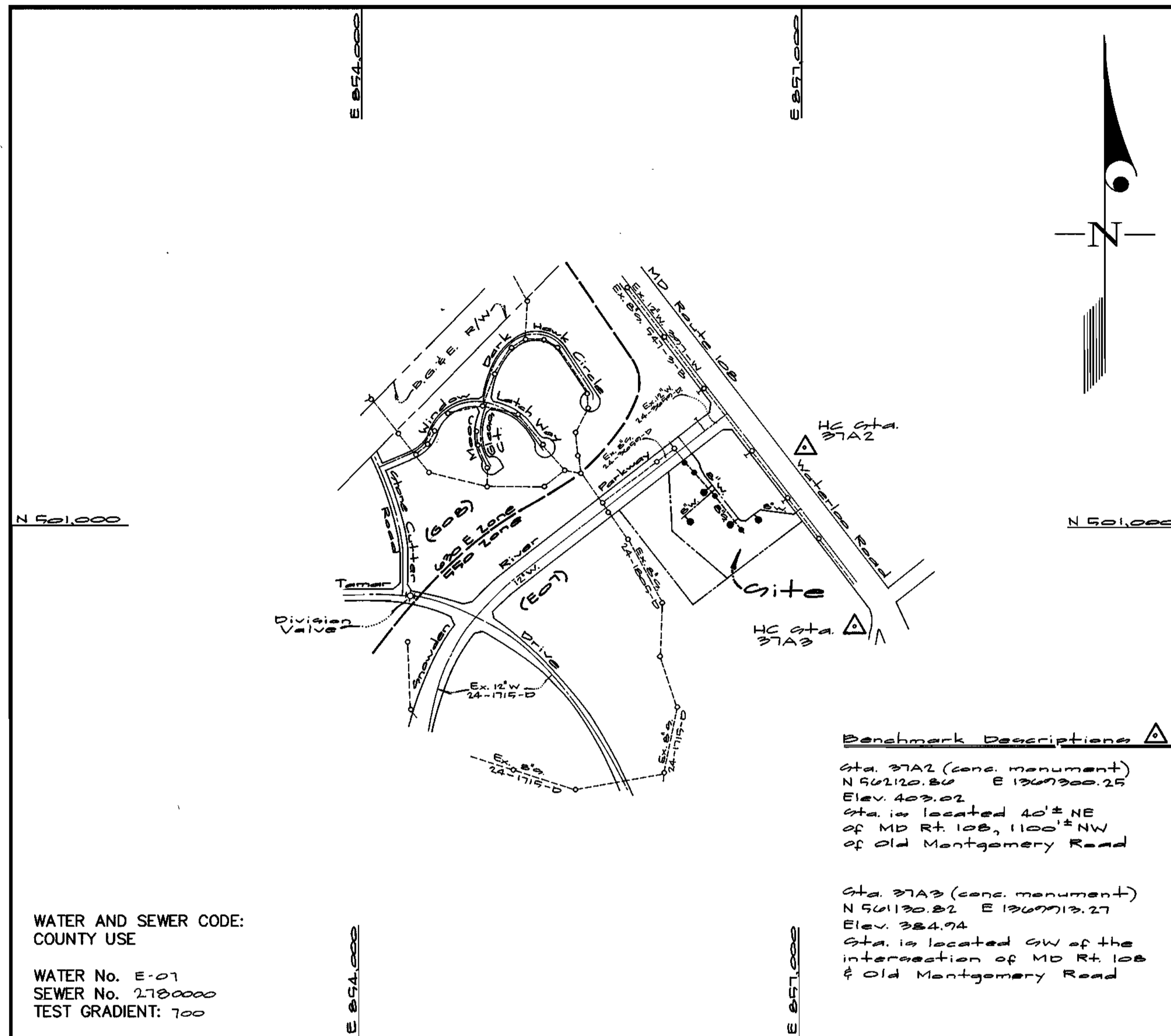
600' SCALE MAP NO. 37 BLOCK NO. 1-7

Route 108 Commercial
Section 1 Area 1
Water and Sewer Extension to
Parcels B-1 thru B-6, Snowden River Pkwy.
Contract No. 24-3813-D
Guilford Election District No. 6 Howard County, Maryland

SCALE AS SHOWN
SHEET 3 OF 3

QUANTITIES				
ITEMS	QUANTITIES ESTIMATED	AS-BUILT		
		QUANTITIES	TYPE	MANUFACTURER/SUPPLIER
2" W.C.	84 L.F.	84 L.F.	TYPE K	CAMBRIDGE LEE CONTRACTOR SALES
6" Water	161 L.F.	161 L.F.	TYTON CL 50	CALIFORNIA PIPE PRODUCTS
8" Water	1212 L.F.	1212 L.F.	TYTON CL 50	"
Fire hydrants	4 Ea.	3 EA	C 502	KEVINEDY MUNICIPAL CONTRACTOR SALES
8" x 8" FHT	4 Ea.	3 EA	MT 0103/103	TULLER MUNICIPAL CONTRACTOR SALES
8" x 8" tee	1 Ea.	1 EA	M.J.C 500	"
6" Valve	3 Ea.	2 EA	M.J.C 500	KEVINEDY MUNICIPAL CONTRACTOR SALES
8" Valve	2 Ea.	2 EA	M.J.C 500	"
8" x 8" tee	3 Ea.	3 EA	"	"
4" SHC	50 L.F.	50 L.F.	P.V.C. B.D.R. 35	J.M. MONTGOMERY CONTRACTOR SALES
6" Sewer	30 L.F.	30 L.F.	P.V.C. B.D.R. 35	"
8" Sewer	601 L.F.	601 L.F.	P.V.C. B.D.R. 35	"
4" Std. Manholes	4 Ea.	4 EA	STD. SANITARY	ATLANTIC CONCRETE PRODUCTS

TYPE OF BUILDING	N/A
NUMBER OF UNITS	N/A
NUMBER OF S.H.C.'s	4
NUMBER OF W.H.C.'s	4
DRAINAGE AREA	Little Patuxent
TREATMENT PLANT	Little Patuxent Water Reclamation Plant



VICINITY MAP
SCALE: 1"=600'

- GENERAL NOTES**
- PART I**
- Approximate location of existing mains are shown. The contractor shall take all necessary precautions to protect existing mains and services and maintain uninterrupted supply. Any damage incurred shall be repaired immediately to the satisfaction of the Engineer at the Contractor's expense.
 - All horizontal controls are based on Maryland State Coordinates [North American Datum 1983 (NAD '83)].
 - All vertical controls are based on U.S.G.S. data.
 - All pipe elevations shown are invert elevations.
 - Clear all utilities by a minimum of 6". Clear all poles by 2'-0" minimum or tunnel as required. The owner has contacted the utility companies and has made arrangements for bracing of poles as shown on the drawings. In the event the contractor's work requires the bracing of additional poles, any cost incurred by the owner for bracing of additional poles or damages shall be deducted from money owed the contractor. The contractor shall coordinate with the utility companies to schedule the bracing of the poles.
 - For details not shown on the drawings, and for materials and construction methods use Howard County Design Manual, Volume IV, Standard Specifications and Detail for Construction (Latest Edition). The contractor shall have a copy of Volume IV on the job.
 - Where test pits have been made on existing utilities, they are noted by the symbol at the location of the test pit. A note or notes containing the results of the test pit or pits is included on the drawings. Existing utilities in the vicinity of the proposed work for which test pits have not been dug shall be located by the contractor two weeks in advance of construction operations at his own expense.
 - Contractor shall notify the following utility companies or agencies at least (5) working days before starting work shown on these plans:
 - State Highway Administration 531-5533
 - BGE Contractor Services 850-4620
 - BGE Under Ground Damage Control 787-9068
 - Miss Utility 1-800-257-7777
 - Colonial Pipeline Co. 795-1390
 - Howard County Department of Public Works Bureau of Utilities 313-4900
 - Trees and shrubs are to be protected from damage to maximum extent. Trees and shrubs located within the construction strip are not to be removed or damaged by the contractor.
 - Contractor shall remove trees, stumps and roots along line of excavation. Payment for such removal shall be included in the unit price bid for construction of the main.
 - The contractor shall notify the Bureau of Highways, Howard County, at (410) 313-2450 at least five (5) working days before any open cut of any County road or boring/jacking operation on County roads for laying water/sewer mains or house connections. The approval of these drawings will constitute compliance with DPW requirement per Section 18.114(a) of the Howard County Code.
- PART II - WATER**
- All water mains to be D.I.P. Class 52 unless otherwise noted.
 - Tops of all water mains to have a minimum of 3'-1/2' cover unless otherwise noted.
 - Valves adjacent to tees shall be strapped to tees.
 - All fittings shall be buttressed or anchored with concrete in accordance with the Standard Details unless otherwise provided for on the drawings.
 - Fire hydrants shall be set to the bury line elevations shown on the drawings. All fire hydrants shall be restrained and buttressed with concrete in accordance with the Standard Details. Soil around the fire hydrant shall be compacted in accordance with Section 1000 and 1005 of the Standard Specifications.
 - The contractor shall not operate any water main valves on the existing water system.
 - All water house connections shall be for inside meter setting unless otherwise noted on plans or in specifications.
 - For sprinkler system for all townhomes or multi-family dwelling units should have a minimum of 1' connection with a 3/4" meter.
- PART III - SEWER**
- All sewer mains shall be DIP and P.V.C. unless otherwise noted.
 - All manholes shall be 4' -0" inside diameter unless otherwise noted.
 - Force mains shall be D.I.P. only.
 - Manholes shown with 12" and 16" walls are for brick manholes only.
 - Manholes designated W.T. in plan and profile shall have watertight frame and covers, Standard Detail G5.52. Where watertight frame and cover is used, set top of frame 1'-6" above finished grade unless otherwise noted on drawings.
 - House(s) with the symbol "C.N.S." indicates that cellar cannot be served.

CONTRACT No. 24 - 3813 - D
Route 108 Commercial
HOWARD COUNTY, MARYLAND
DEPARTMENT OF PUBLIC WORKS

Sediment Control Measures will be implemented in accordance with Section 219 of the Specifications & with Road Drawings Plan 90100-44; Drawings 4 and 4a for Sediment & Erosion Control.

REVIEWED FOR HOWARD SOIL CONSERVATION DISTRICT AND MEETS TECHNICAL REQUIREMENT.

Cheryl Simmons 2/1/99
SIGNATURE DATE
U.S.D.A. NATURAL RESOURCES CONSERVATION SERVICE

THIS DEVELOPMENT PLAN IS APPROVED FOR SOIL EROSION AND SEDIMENT CONTROL BY THE HOWARD SOIL CONSERVATION DISTRICT.

APPROVED: *John Robertson* 12/1/99
DATE
HOWARD S.C.D.

DEPARTMENT OF PUBLIC WORKS
HOWARD COUNTY, MARYLAND
John Robertson 11-29-99
CHIEF, BUREAU OF UTILITIES DATE

DEPARTMENT OF PLANNING AND ZONING
HOWARD COUNTY, MARYLAND
John Robertson 12/1/99
CHIEF, DEVELOPMENT ENGINEERING DIVISION DATE

GLW GUTSCHICK LITTLE & WEBER, P.A.
CIVIL ENGINEERS, LAND SURVEYORS, LAND PLANNERS, LANDSCAPE ARCHITECTS
3009 NATIONAL DRIVE - SUITE 250 - BURTONSVILLE OFFICE PARK
BURTONSVILLE, MARYLAND 20866
TEL: 301-421-4024 BALT: 410-880-1820 DC/VA: 301-959-2524 FAX: 301-421-4186



DES: FMM	F.M.M.	Rev. 01 quantity per	4/6/00
	M.C.F.	relocation of FH on panel B-2	
DRN: KLP		Rev. 02 quantity per new FH	5/5/00
CHK: DEV			
DATE: 02/1/99	KCI 1	AS-BUILT CONDITIONS ADDED TO PLAN	04/03/00
	BY NO	REVISION	DATE

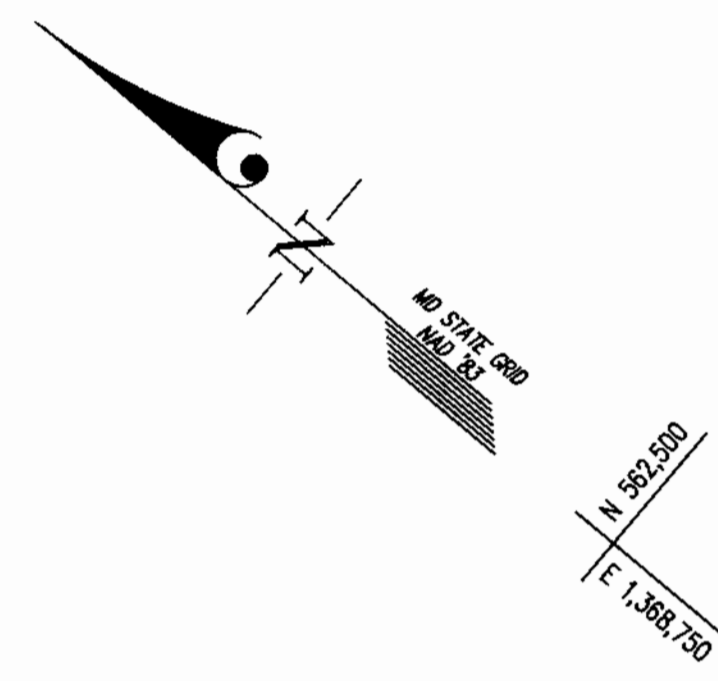
Cover sheet
600' SCALE MAP NO. 37 BLOCK NO. 1-7

Route 108 Commercial
Section 1 Area 1
Water and Sewer Extension to
Parcels B-1 thru B-6, Snowden River Parkway
Contract No. 24-3813-D
Guilford Election District No. 6 Howard County, Maryland

GLW FILE No. 97009

SCALE AS SHOWN
SHEET 1 OF 2

MARYLAND ROUTE 108
(100' PUBLIC R/W)
M.S.I.A. R/W PLAT Nos. 12453 & 12454

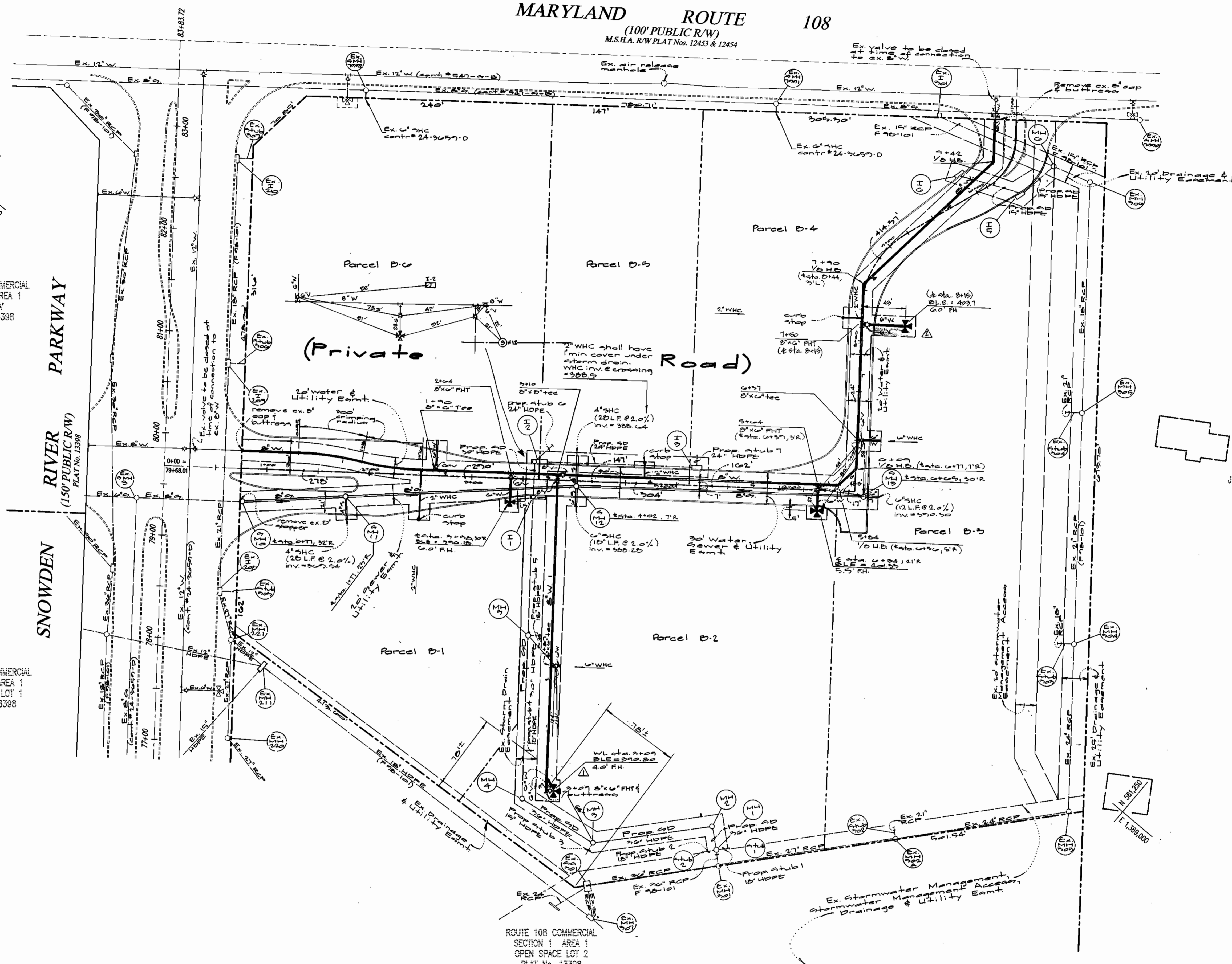


ROUTE 108 COMMERCIAL
SECTION 1 AREA 1
PARCEL 'A'
PLAT No. 13398

ROUTE 108 COMMERCIAL
SECTION 1 AREA 1
OPEN SPACE LOT 1
PLAT No. 13398

ROUTE 108 COMMERCIAL
SECTION 1 AREA 1
OPEN SPACE LOT 2
PLAT No. 13398

N/F PROPERTY OF
JOSEPH L. & SHIRLEY I. POJEET
L 516 F. 196



DEPARTMENT OF
PUBLIC WORKS
HOWARD COUNTY, MARYLAND

Robert M. Benjamin 11-29-99
CHIEF, BUREAU OF UTILITIES DATE

DEPARTMENT OF
PLANNING AND ZONING
HOWARD COUNTY, MARYLAND

Michael J. Dennis 12/2/99
CHIEF, DEVELOPMENT ENGINEERING DIVISION DATE

GLW GUTSCHICK LITTLE & WEBER, P.A.
CIVIL ENGINEERS, LAND SURVEYORS, LAND PLANNERS, LANDSCAPE ARCHITECTS
3909 NATIONAL DRIVE - SUITE 250 - BURTNSVILLE OFFICE PARK
BURTNSVILLE, MARYLAND 20866
TEL: 301-421-4024 FAX: 301-989-2524



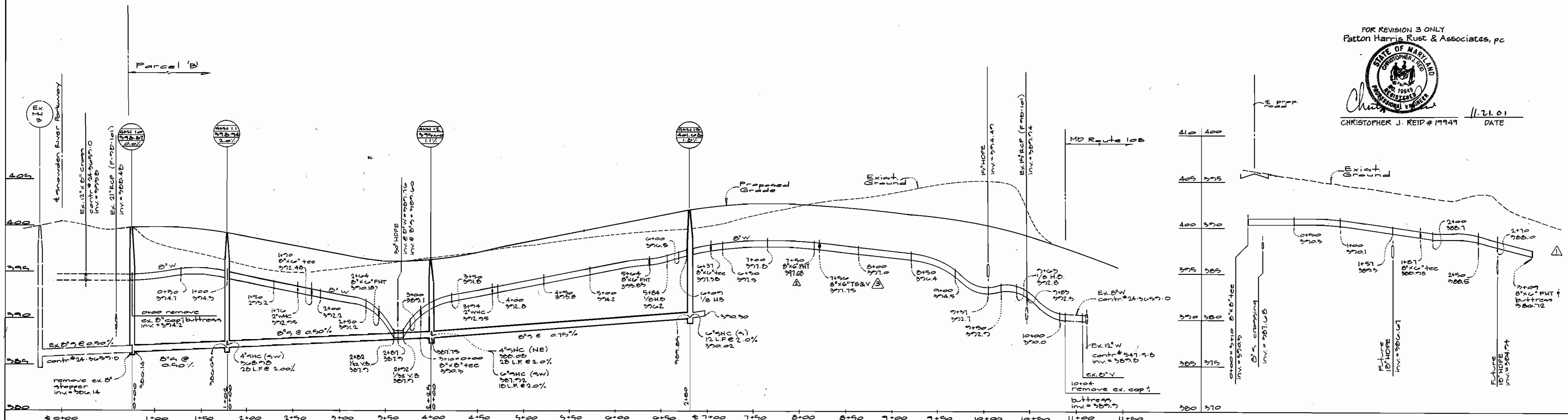
DES: PMM	mm	Δ	Rev. FH location on Parcel B-2	
DRN: KLF	mc	Δ	New FH location	9/3/00
CHK: DEV				
DATE: 04/03/00	K.E.I.	1	ASBUILT CONDITIONS ADDED TO PLAN	04/03/00
	BY	NO	REVISION	DATE


Plan
Water & Sewer
Scale: 1" = 50'

Route 108 Commercial
Section 1 Area 1
Water and Sewer Extension to
Parcels B-1 thru B-6, Snowden River Pkwy.
Contract No. 24-3813-D
Guilford Election District No. 6 Howard County, Maryland

SCALE
AS
SHOWN

SHEET
2 OF 3



FOR REVISION 3 ONLY
 Patton Harris Rust & Associates, pc

 CHRISTOPHER J. REID # 19949 DATE 11.21.01

Department of Public Works
 Howard County, Maryland
 Robert J. Bevington
 Chief, Bureau of Utilities

Department of Planning & Zoning
 Howard County, Maryland
 [Signature]
 Chief Development Engineering Division

GLW GUTSCHICK LITTLE & WEBER, P.A.
 ENGINEERS, PLANNERS, SURVEYORS
 3309 NATIONAL DRIVE SUITE 250 - BURTOWNSVILLE OFFICE PARK
 BURTOWNSVILLE, MD 20886
 (301) 421-4024



DES:	f.m.m.	△	Revise watermain profile to extend 4/6/00
DRN:	m.a.f.	△	Add 8" x 6" PHT @ sta. 7+50 5/2/00
CHK:	C.J.R.	△	MODIFIED PROFILE 11/20/01
DATE:	BY	NO.	REVISION

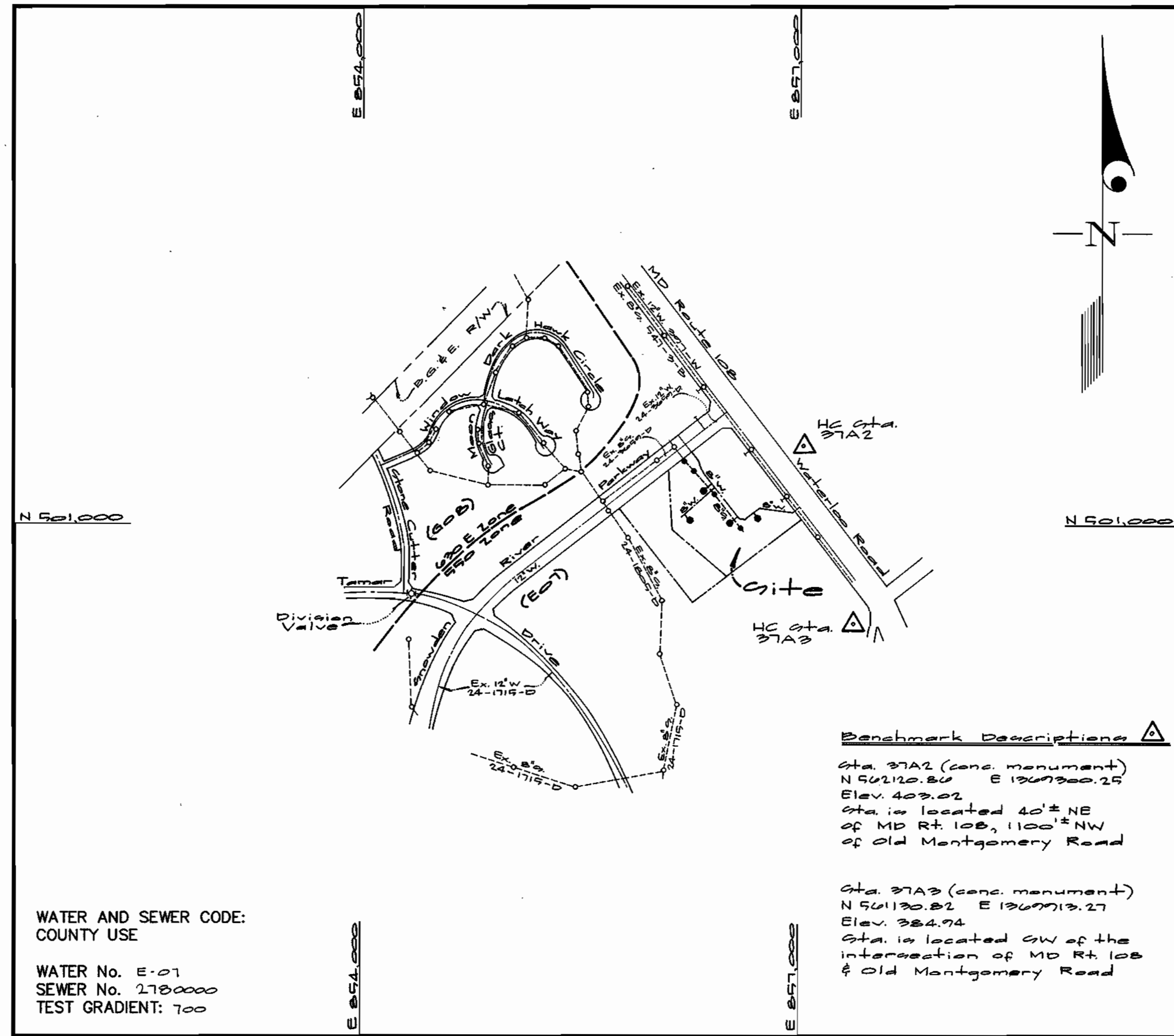
Water & Sewer Profiles
 scales: 1" = 50' horiz.
 1" = 5' vert.

Route 10B Commercial Section 1 Area 1
 Water and Sewer Extension to Parcels B-1 thru B-6, Snowden River Pkwy.
 Contract No. 24-3813-D
 Guilford Election District No. 6 Howard County, Maryland

SCALE AS SHOWN
 SHEET 3 OF 3

QUANTITIES				
ITEMS	QUANTITIES ESTIMATED	AS-BUILT		
		QUANTITIES	TYPE	MANUFACTURER/SUPPLIER
2" W/C	84 L.F.	84 L.F.	TYPE K	CAMBRIDGE LEE (CONCRETE)
6" Water	167 L.F.	167 L.F.	TYTON CLE52	TYTON PIPE PRODUCTS
8" Water	1217 L.F.	1207 L.F.	TYTON CLE52	"
Fire hydrants	4 Ea.	3 EA	C 502	KEY-BREDY MANUFACTURING CORPORATION
8" x 6" FHT	4 Ea.	3 EA	MT. CUBA 1421	TYTON PIPE PRODUCTS
8" x 6" tee	1 Ea.	1 EA	M.J. C500	KEY-BREDY MANUFACTURING CORPORATION
6" Valve	2 Ea.	2 EA	M.J. C500	KEY-BREDY MANUFACTURING CORPORATION
8" Valve	2 Ea.	2 EA	M.J. C500	"
8" x 6" tee	2 Ea.	2 EA	"	"
4" SHC	50 L.F.	56 L.F.	P.V.C. SDR-35	J.M. MONTGOMERY CONTRACTOR SALES
6" Sewer	30 L.F.	30 L.F.	P.V.C. SDR-35	"
8" Sewer	607 L.F.	630 L.F.	P.V.C. SDR-35	"
4" Std. Manholes	4 Ea.	4 EA.	STD. SANITARY	ATLANTIC CONCRETE PRODUCTS

TYPE OF BUILDING	N/A
NUMBER OF UNITS	N/A
NUMBER OF S.H.C.'s	4
NUMBER OF W.H.C.'s	0
DRAINAGE AREA	Little Patuxent
TREATMENT PLANT	Little Patuxent Water Reclamation Plant



VICINITY MAP
SCALE: 1"=600'

- GENERAL NOTES**
- PART I**
- Approximate location of existing mains are shown. The contractor shall take all necessary precautions to protect existing mains and services and maintain uninterrupted supply. Any damage incurred shall be repaired immediately to the satisfaction of the Engineer at the Contractor's expense.
 - All horizontal controls are based on Maryland State Coordinates [North American Datum 1983 (NAD '83)].
 - All vertical controls are based on U.S.G.S. data.
 - All pipe elevations shown are invert elevations.
 - Clear all utilities by a minimum of 6". Clear all poles by 2'-0" minimum or tunnel as required. The owner has contacted the utility companies and has made arrangements for bracing of poles as shown on the drawings. In the event the contractor's work requires the bracing of additional poles, any cost incurred by the owner for bracing of additional poles or damages shall be deducted from money owed the contractor. The contractor shall coordinate with the utility companies to schedule the bracing of the poles.
 - For details not shown on the drawings, and for materials and construction methods use Howard County Design Manual, Volume IV, Standard Specifications and Detail for Construction (Latest Edition). The contractor shall have a copy of Volume IV on the job.
 - Where test pits have been made on existing utilities, they are noted by the symbol at the location of the test pit. A note or notes containing the results of the test pit or pits is included on the drawings. Existing utilities in the vicinity of the proposed work for which test pits have not been dug shall be located by the contractor two weeks in advance of construction operations at his own expense.
 - Contractor shall notify the following utility companies or agencies at least (5) working days before starting work shown on these plans:

State Highway Administration	531-5533
BGE Contractor Services	850-4620
BGE Under Ground Damage Control	787-9068
Miss Utility	1-800-257-7777
Colonial Pipeline Co.	795-1390
Howard County Department of Public Works Bureau of Utilities	313-4900
 - Trees and shrubs are to be protected from damage to maximum extent. Trees and shrubs located within the construction strip are not to be removed or damaged by the contractor.
 - Contractor shall remove trees, stumps and roots along line of excavation. Payment for such removal shall be included in the unit price bid for construction of the main.
 - The contractor shall notify the Bureau of Highways, Howard County, at (410) 313-2450 at least five (5) working days before any open cut of any County road or boring/jacking operation on County roads for laying water/sewer mains or house connections. The approval of these drawings will constitute compliance with DPW requirement per Section 18.114(a) of the Howard County Code.
- PART II - WATER**
- All water mains to be D.I.P. Class 52 unless otherwise noted.
 - Tops of all water mains to have a minimum of 3'-1/2" cover unless otherwise noted.
 - Valves adjacent to tees shall be strapped to tees.
 - All fittings shall be buttressed or anchored with concrete in accordance with the Standard Details unless otherwise provided for on the drawings.
 - Fire hydrants shall be set to the bury line elevations shown on the drawings. All fire hydrants shall be restrained and buttressed with concrete in accordance with the Standard Details. Soil around the fire hydrant shall be compacted in accordance with Section 1000 and 1005 of the Standard Specifications.
 - The contractor shall not operate any water main valves on the existing water system.
 - All water house connections shall be for inside meter setting unless otherwise noted on plans or in specifications.
 - For sprinkler system for all townhomes or multi-family dwelling units should have a minimum of 1' connection with a 3/4" meter.
- PART III - SEWER**
- All sewer mains shall be DIP and P.V.C. unless otherwise noted.
 - All manholes shall be 4' -0" inside diameter unless otherwise noted.
 - Force mains shall be D.I.P. only.
 - Manholes shown with 12" and 18" walls are for brick manholes only. Manholes designated W.T. in plan and profile shall have watertight frame and covers, Standard Detail G5.52. Where watertight frame and cover is used, set top of frame 1'-6" above finished grade unless otherwise noted on drawings.
 - House(s) with the symbol "C.N.S." indicates that cellar cannot be served.

CONTRACT No. 24 - 3813 - D
Route 108 Commercial
HOWARD COUNTY, MARYLAND
DEPARTMENT OF PUBLIC WORKS

Sediment Control Measures will be implemented in accordance with Section 219 of the Specifications & with Road Drawings Plan 907-00-44; Drawings 4 of 4 for Sediment & Erosion Control.

REVIEWED FOR HOWARD SOIL CONSERVATION DISTRICT AND MEETS TECHNICAL REQUIREMENT.
Cheryl Simmons 2/1/99
U.S.E.A. NATIONAL RESOURCES CONSERVATION SERVICE
THIS DEVELOPMENT PLAN IS APPROVED FOR SOIL EROSION AND SEDIMENT CONTROL BY THE HOWARD SOIL CONSERVATION DISTRICT.
APPROVED: *John R. Johnson* 12/1/99
HOWARD S.C.D. DATE

DEPARTMENT OF PUBLIC WORKS
HOWARD COUNTY, MARYLAND
John R. Johnson 11-29-99
CHIEF, BUREAU OF UTILITIES DATE

DEPARTMENT OF PLANNING AND ZONING
HOWARD COUNTY, MARYLAND
John R. Johnson 12/1/99
CHIEF, DEVELOPMENT ENGINEERING DIVISION DATE

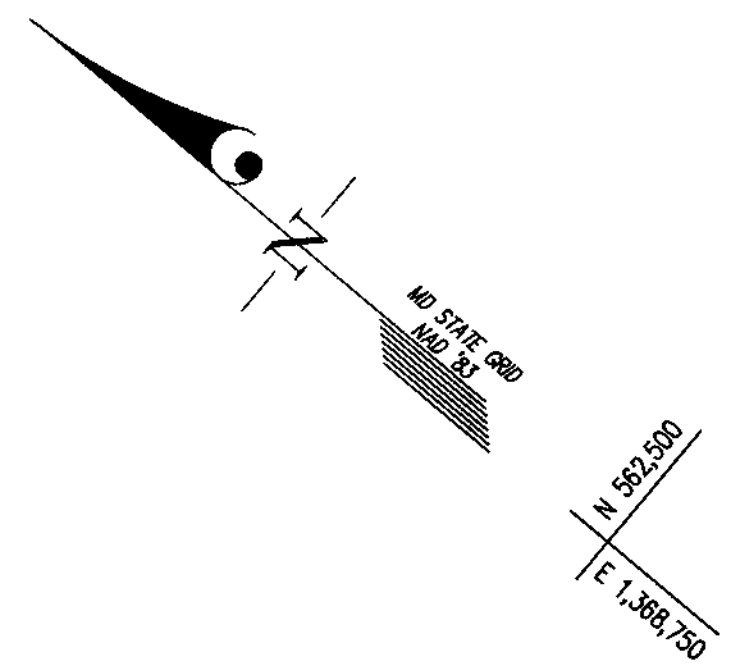
GLW GUTSCHICK LITTLE & WEBER, P.A.
CIVIL ENGINEERS, LAND SURVEYORS, LAND PLANNERS, LANDSCAPE ARCHITECTS
3909 NATIONAL DRIVE - SUITE 250 - BURTONSVILLE OFFICE PARK
BURTONSVILLE, MARYLAND 20866
TEL: 301-421-4024 BAL: 410-660-1820 DC/VA: 301-988-2524 FAX: 301-421-4186



DES: FMM	Fmm	Rev. B/W quantity per release of FH on parcel B-2	2/1/00
DRN: KLP	n.e.f.	Rev. G/W quantity per new FH	6/3/00
CHK: DEV	KCI	AS-BUILT CONDITIONS ADDED TO PLAN	06/06/01
DATE: 06-11-99	KCI	AS-BUILT CONDITIONS ADDED TO PLAN	04/03/00
BY: NO	REVISION	DATE	600' SCALE MAP NO. 27 BLOCK NO. 1-7

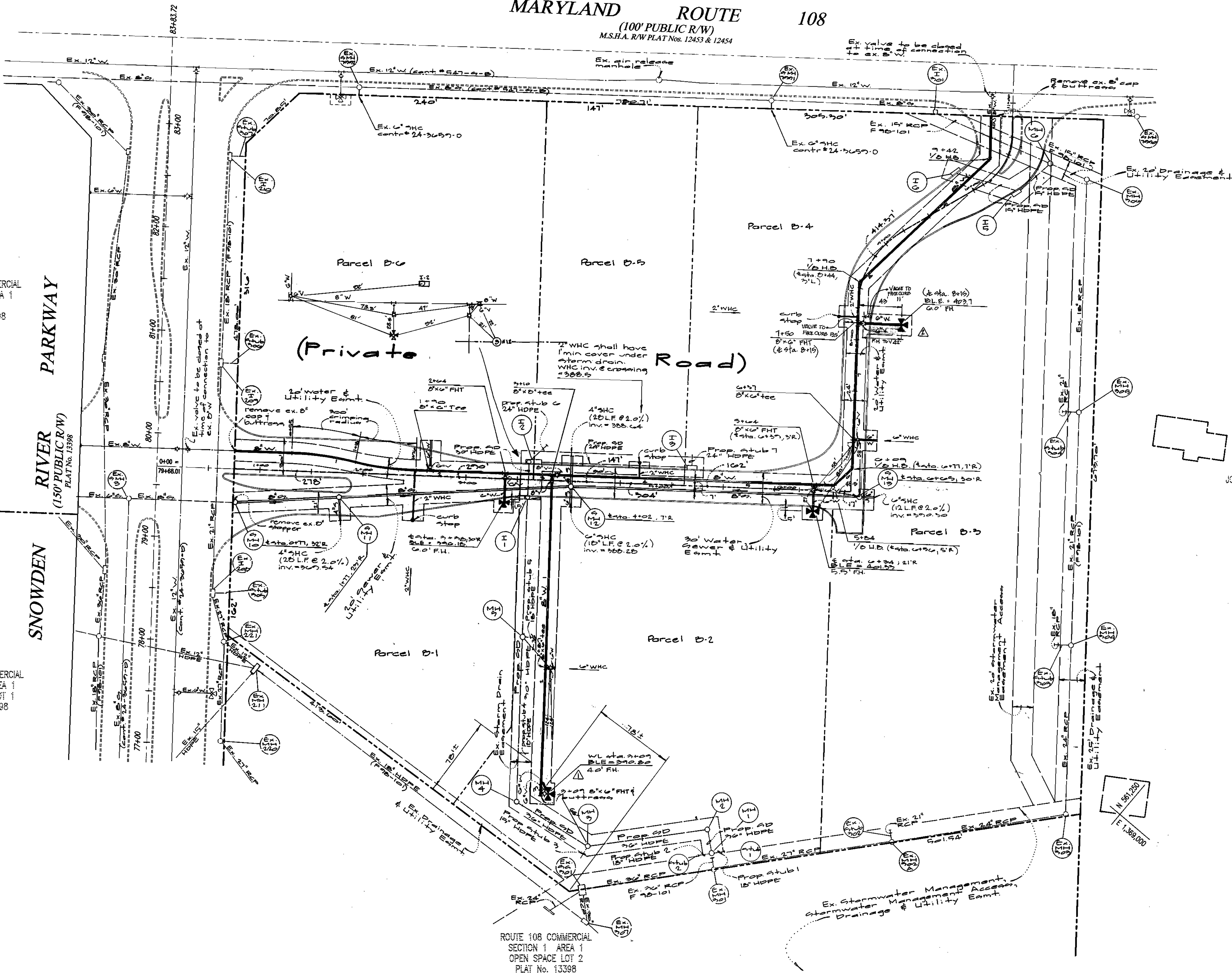
Route 108 Commercial
Section 1 Area 1
Water and Sewer Extension to
Parcels B-1 thru B-6, Snowden River Pkwy.
Contract No. 24-3813-D
Gulfport Election District No. 6 Howard County, Maryland
SCALE AS SHOWN
SHEET 1 OF 3

MARYLAND ROUTE 108
(100' PUBLIC R/W)
M.S.H.A. RW PLAT Nos. 12453 & 12454



ROUTE 108 COMMERCIAL
SECTION 1 AREA 1
PARCEL 'A'
PLAT No. 13398

ROUTE 108 COMMERCIAL
SECTION 1 AREA 1
OPEN SPACE LOT 1
PLAT No. 13398



N/F PROPERTY OF
JOSEPH L. & SHIRLEY I. POEET
L 516 F. 196

ROUTE 108 COMMERCIAL
SECTION 1 AREA 1
OPEN SPACE LOT 2
PLAT No. 13398

DEPARTMENT OF
PUBLIC WORKS
HOWARD COUNTY, MARYLAND

DEPARTMENT OF
PLANNING AND ZONING
HOWARD COUNTY, MARYLAND

GLW GUTSCHICK LITTLE & WEBER, P.A.
CIVIL ENGINEERS, LAND SURVEYORS, LAND PLANNERS, LANDSCAPE ARCHITECTS
3909 NATIONAL DRIVE - SUITE 250 - BURTONSVILLE OFFICE PARK
BURTONSVILLE, MARYLAND 20866
TEL: 301-421-4024 BAL: 410-880-1820 DC/VA: 301-889-2524 FAX: 301-421-4186



DES: FMM	Rev. FH location on Parcel B-2	9/3/00
DRN: KLF	New FH location	
CHK: DEV	ASBUILT CONDITIONS ADDED TO PLAN	02/01/01
DATE: 02/19/01	ASBUILT CONDITIONS ADDED TO PLAN	04/09/00
BY: NO	REVISION	DATE

Plan
Water & Sewer
Scale: 1"=50'

Routes 108 Commercial
Section 1 Area 1
Water and Sewer Extension to
Parcels B-1 thru B-6, Snowden River Pkwy.

SCALE
AS
SHOWN

Robert Bennett 11-29-99
CHIEF, BUREAU OF UTILITIES DATE

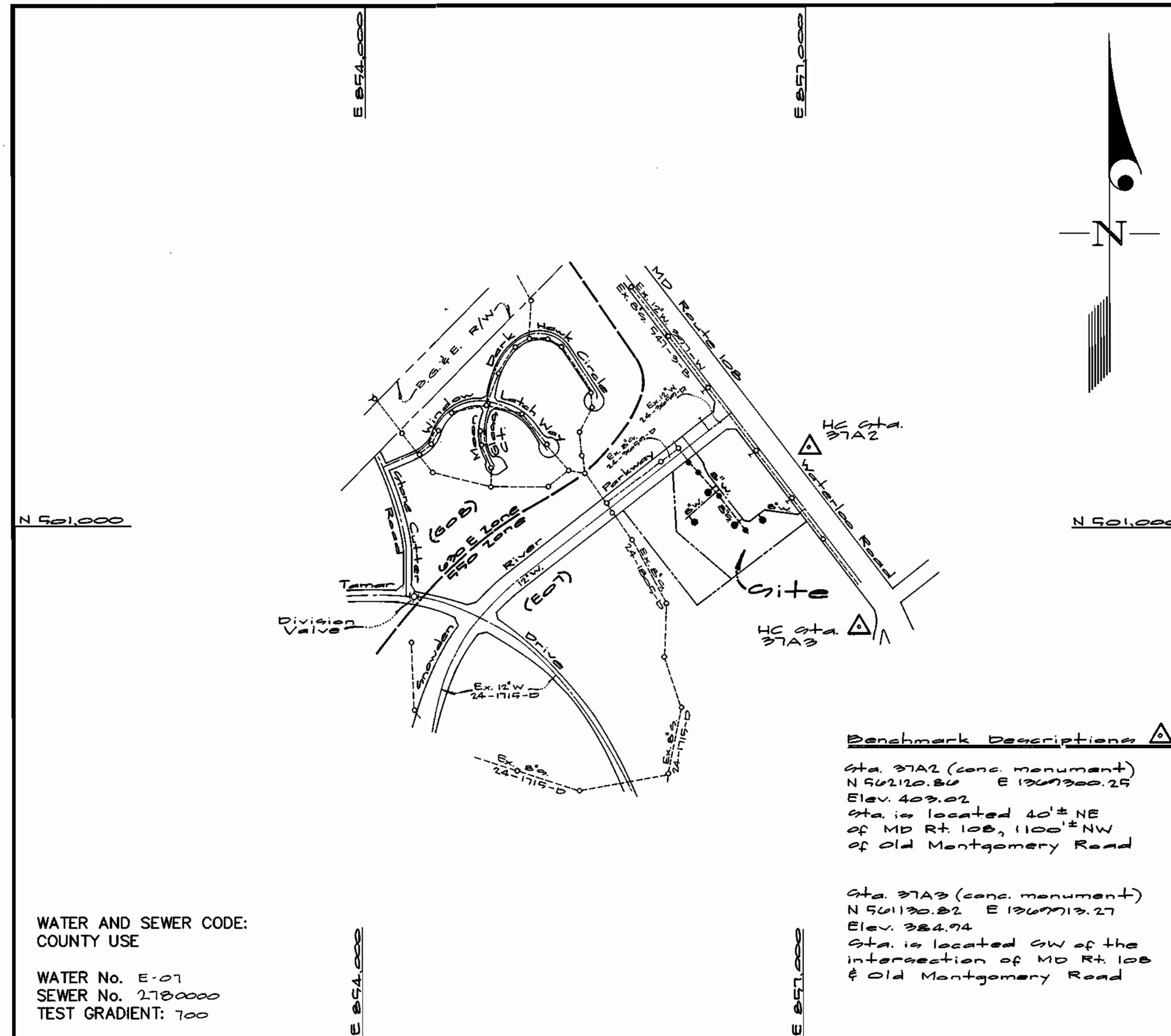
William Demmer 12/2/99
CHIEF, DEVELOPMENT ENGINEERING DIVISION DATE

Contract No. 24-3813-D
Guilford Election District No. 6 Howard County, Maryland

SHEET
2 OF 3

QUANTITIES				
ITEMS	QUANTITIES ESTIMATED	AS-BUILT		
		QUANTITIES	TYPE	MANUFACTURER/SUPPLIER
2" W/C	66 L.F.	64 L.F.	TYPE K	CAMBRIDGE CO. CONCRETE SALES
6" Water	204 L.F.	132 L.F.	TYTON CL50	CRIPPAH PIPE PRODUCTS
8" Water	1917 L.F.	1897 L.F.	TYTON CL50	"
Fire hydrants	5 Ea.	3 EA	C 502	KENNEDY MUNICIPAL CONTRACTOR
8" x 8" FHT	4 Ea.	3 EA	MT 0153/143	TALOR MUNICIPAL CONTRACTOR
8" x 8" tee	1 Ea.	1 EA	M.J.C 500	"
6" Valve	4 Ea.	6 EA	M.J.C 500	HOWARD MUNICIPAL CONTRACTOR
8" Valve	2 Ea.	2 EA	M.J.C 500	"
8" x 8" tee	3 Ea.	3 EA	"	"
4" SHC	50 L.F.	50 L.F.	P.V.C. SDR-35	J.M. MONTGOMERY CONTRACTOR SALES
6" Sewer	30 L.F.	30 L.F.	P.V.C. SDR-35	"
8" Sewer	607 L.F.	630 L.F.	P.V.C. SDR-35	"
4' Std. Manholes	4 Ea.	4 EA	STD. SPLIT	ATLANTIC CONCRETE PRODUCTS
6" x 6" Tee	1 Ea.			

TYPE OF BUILDING	N/A
NUMBER OF UNITS	N/A
NUMBER OF S.H.C.'s	4
NUMBER OF W.H.C.'s	6
DRAINAGE AREA	Little Patuxent
TREATMENT PLANT	Little Patuxent Water Reclamation Plant



VICINITY MAP
SCALE: 1"=600'

- GENERAL NOTES**
- PART I**
- Approximate location of existing mains are shown. The contractor shall take all necessary precautions to protect existing mains and services and maintain uninterrupted supply. Any damage incurred shall be repaired immediately to the satisfaction of the Engineer at the Contractor's expense.
 - All horizontal controls are based on Maryland State Coordinates [North American Datum 1983 (NAD '83)].
 - All vertical controls are based on U.S.G.S. data.
 - All pipe elevations shown are invert elevations.
 - Clear all utilities by a minimum of 6". Clear all poles by 2'-0" minimum or tunnel as required. The owner has contacted the utility companies and has made arrangements for bracing of poles as shown on the drawings. In the event the contractor's work requires the bracing of additional poles or damages shall be deducted from money owed the contractor. The contractor shall coordinate with the utility companies to schedule the bracing of the poles.
 - For details not shown on the drawings, and for materials and construction methods use Howard County Design Manual, Volume IV, Standard Specifications and Detail for Construction (Latest Edition). The contractor shall have a copy of Volume IV on the job.
 - Where test pits have been made on existing utilities, they are noted by the symbol at the location of the test pit. A note or notes containing the results of the test pit or pits is included on the drawings. Existing utilities in the vicinity of the proposed work for which test pits have not been dug shall be located by the contractor two weeks in advance of construction operations at his own expense.
 - Contractor shall notify the following utility companies or agencies at least (5) working days before starting work shown on these plans:

State Highway Administration	531-5533
BGE Contractor Services	850-4620
BGE Under Ground Damage Control	787-9068
Miss Utility	1-800-257-7777
Colonial Pipeline Co.	795-1390
Howard County Department of Public Works Bureau of Utilities	313-4900
 - Trees and shrubs are to be protected from damage to maximum extent. Trees and shrubs located within the construction strip are not to be removed or damaged by the contractor.
 - Contractor shall remove trees, stumps and roots along line of excavation. Payment for such removal shall be included in the unit price bid for construction of the main.
 - The contractor shall notify the Bureau of Highways, Howard County, at (410) 313-2450 at least five (5) working days before any open cut of any County road or boring/jacking operation on County roads for laying water/sewer mains or house connections. The approval of these drawings will constitute compliance with DPW requirement per Section 18.114(a) of the Howard County Code.
- PART II - WATER**
- All water mains to be D.I.P. Class 52 unless otherwise noted.
 - Tops of all water mains to have a minimum of 3'-1/2' cover unless otherwise noted.
 - Valves adjacent to tees shall be strapped to tees.
 - All fittings shall be buttressed or anchored with concrete in accordance with the Standard Details unless otherwise provided for on the drawings.
 - Fire hydrants shall be set to the bury line elevations shown on the drawings. All fire hydrants shall be restrained and buttressed with concrete in accordance with the Standard Details. Soil around the fire hydrant shall be compacted in accordance with Section 1000 and 1005 of the Standard Specifications.
 - The contractor shall not operate any water main valves on the existing water system.
 - All water house connections shall be for inside meter setting unless otherwise noted on plans or in specifications.
 - For sprinkler system for all townhomes or multi-family dwelling units should have a minimum of 1' connection with a 3/4" meter.
- PART III - SEWER**
- All sewer mains shall be DIP and P.V.C. unless otherwise noted.
 - All manholes shall be 4' - 0" inside diameter unless otherwise noted.
 - Force mains shall be D.I.P. only.
 - Manholes shown with 12" and 16" walls are for brick manholes only.
 - Manholes designated W.T. in plan and profile shall have watertight frame and covers, Standard Detail GS.52. Where watertight frame and cover is used, set top of frame 1'-6" above finished grade unless otherwise noted on drawings.
 - House(s) with the symbol "C.N.S." indicates that cellar cannot be served.

CONTRACT No. 24 - 3813 - D
Route 108 Commercial
HOWARD COUNTY, MARYLAND
DEPARTMENT OF PUBLIC WORKS

Sediment Control Measures will be implemented in accordance with Section 219 of the Specifications & with Road Drawings Plan 99-00-44; Drawings 4 of 4 for Sediment & Erosion Control.

REVIEWED FOR HOWARD SOIL CONSERVATION DISTRICT AND MEETS TECHNICAL REQUIREMENT.

Cheryl Simmons 2/1/99
SIGNATURE DATE
U.S.D.A. NATURAL RESOURCES CONSERVATION SERVICE

THIS DEVELOPMENT PLAN IS APPROVED FOR SOIL EROSION AND SEDIMENT CONTROL BY THE HOWARD SOIL CONSERVATION DISTRICT.

APPROVED: *Chris Reid* 12/1/99
HOWARD S.C.D. DATE

FOR REVISION 3 ONLY
Patton Harris Rust & Associates, pc

Chris Reid 11.21.01
CHRISTOPHER J. REID #19949 DATE

DEPARTMENT OF PUBLIC WORKS
HOWARD COUNTY, MARYLAND

Robert M. Bevinger 11-29-99
CHIEF, BUREAU OF UTILITIES DATE

DEPARTMENT OF PLANNING AND ZONING
HOWARD COUNTY, MARYLAND

Cheryl Simmons 12/2/99
CHIEF, DEVELOPMENT ENGINEERING DIVISION DATE

GLW GUTSCHICK LITTLE & WEBER, P.A.
CIVIL ENGINEERS, LAND SURVEYORS, LAND PLANNERS, LANDSCAPE ARCHITECTS
3909 NATIONAL DRIVE - SUITE 250 - BURTONSVILLE OFFICE PARK
BURTONSVILLE, MARYLAND 20886
TEL: 301-421-4024 BAL: 410-980-1020 DC/VA: 301-989-2524 FAX: 301-421-4186



DES: FMM	FMM	Rev. 2" W quantity per collection of FH on parcel B-2	4/6/00
DRN: KLP	KLP	Rev. 6" W quantity per new FH	6/3/00
CHK: BEV	KCI	REV. QUANTITIES	11/20/01
DATE: Oct. 1999	KCI	ASBUILT CONDITIONS ADDED TO PLAN	02/02/01
	KCI	ASBUILT CONDITIONS ADDED TO PLAN	04/03/00
	BY NO	REVISION	DATE

Cover sheet

600' SCALE MAP NO. 37 BLOCK NO. 1-7

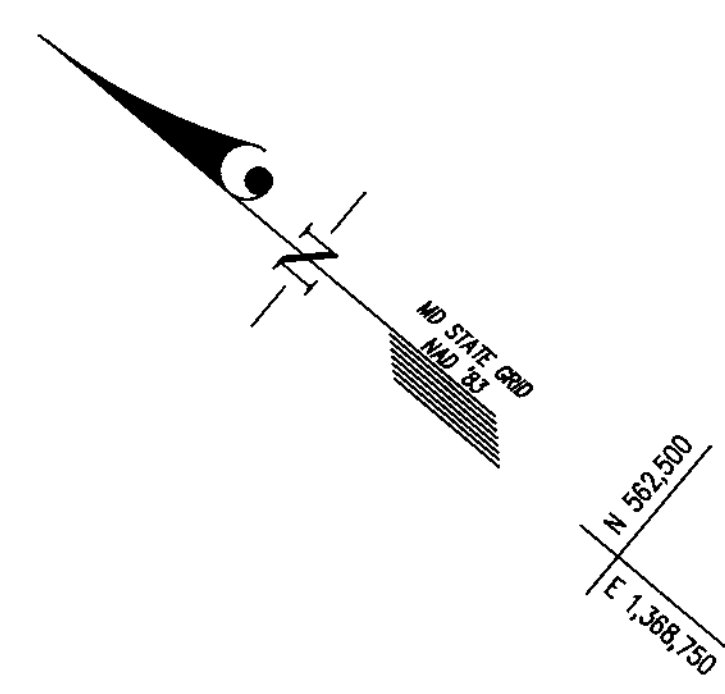
Route 108 Commercial
Section 1 Area 1
Water and Sewer Extension to
Parcels B-1 thru B-6, Snowden River Pkwy.

Contract No. 24-3813-D
Guilford Election District No. 6 Howard County, Maryland

GLW FILE No. 97009

SHEET 1 OF 3

MARYLAND ROUTE 108
(100' PUBLIC R/W)
M.S.H.A. RW PLAT Nos. 12453 & 12454



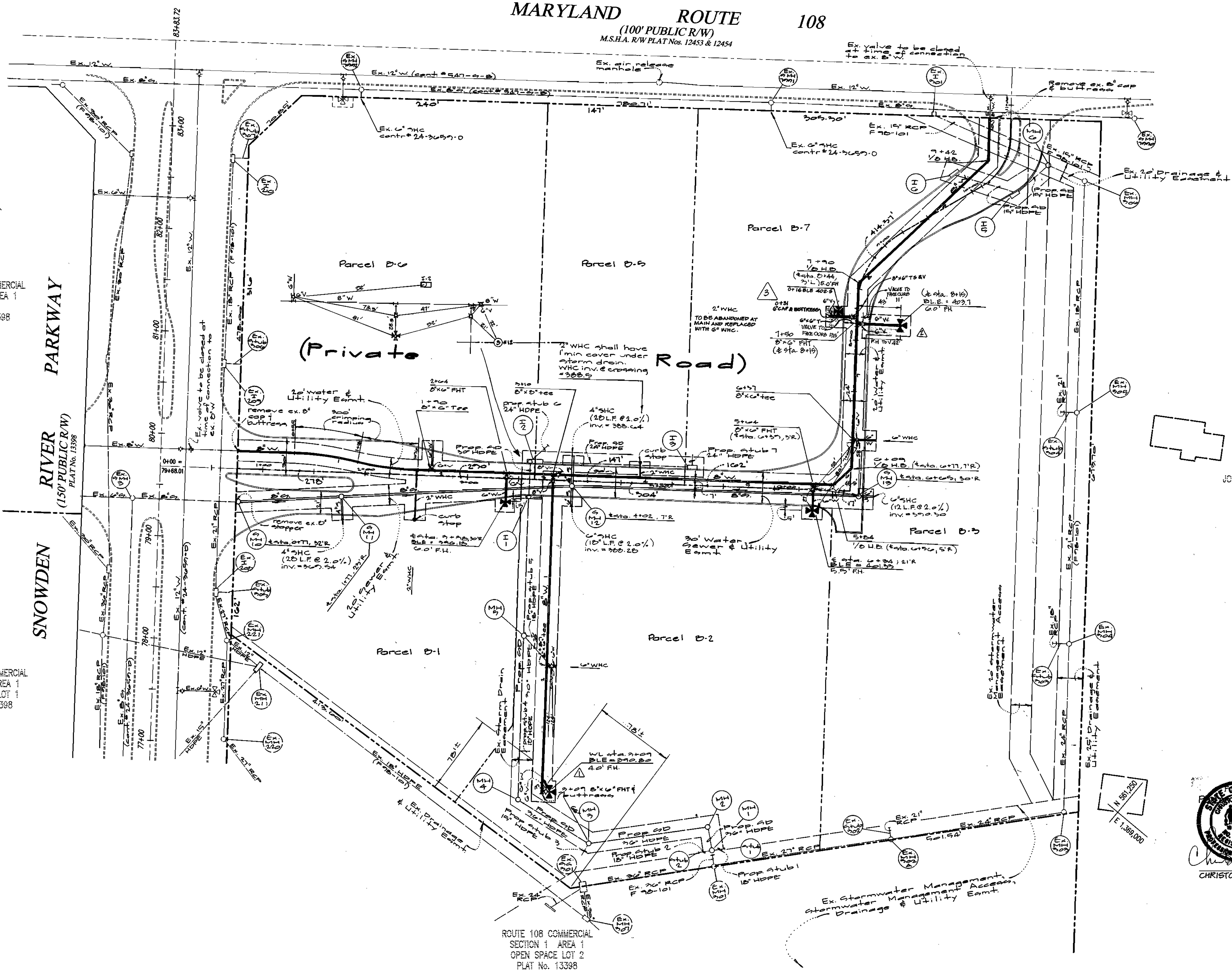
ROUTE 108 COMMERCIAL
SECTION 1 AREA 1
PARCEL 'K'
PLAT No. 13398

ROUTE 108 COMMERCIAL
SECTION 1 AREA 1
OPEN SPACE LOT 1
PLAT No. 13398

ROUTE 108 COMMERCIAL
SECTION 1 AREA 1
OPEN SPACE LOT 2
PLAT No. 13398

N/F PROPERTY OF
JOSEPH L. & SHIRLEY I. POTTEI
L 516 F. 196

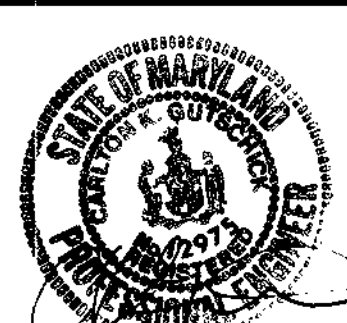
STATE OF MARYLAND
REGISTERED PROFESSIONAL ENGINEER
CHRISTOPHER J. REID #19949
DATE 11.21.01



DEPARTMENT OF PUBLIC WORKS
HOWARD COUNTY, MARYLAND
Robert M. Bessinger 11-29-99
CHIEF, BUREAU OF UTILITIES DATE

DEPARTMENT OF PLANNING AND ZONING
HOWARD COUNTY, MARYLAND
[Signature] 12/2/99
CHIEF, DEVELOPMENT ENGINEERING DIVISION DATE

GLW GUTSCHICK LITTLE & WEBER, P.A.
CIVIL ENGINEERS, LAND SURVEYORS, LAND PLANNERS, LANDSCAPE ARCHITECTS
3609 NATIONAL DRIVE - SUITE 250 - BURTNSVILLE OFFICE PARK
BURTONSVILLE, MARYLAND 20866
TEL: 301-421-4024 BALT: 410-880-1820 DC/VA: 301-988-2524 FAX: 301-421-4188



DES: FMM	F.M.M.	△	REV. FH LOCATION ON PARCEL B-2	9/9/00
DRN: KLP	K.L.P.	△	REV. NHC, ADDED FH AT PARCEL B-7	11/20/01
CHK: DEV	K.C.I.	2	ASBUILT CONDITIONS ADDED TO PLAN	02/01/01
DATE: Oct-1999	K.C.I.	1	ASBUILT CONDITIONS ADDED TO PLAN	04/09/00
BY: NO			REVISION	DATE

Plan Water & Sewer
Scale: 1" = 50'

Route 108 Commercial
Section 1 Area 1
Water and Sewer Extension to
Parcels B-1 thru B-6, Snowden River Pkwy.
Contract No. 24-3813-D
Guilford Election District No. 6 Howard County, Maryland

SCALE AS SHOWN
SHEET 2 OF 3