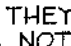


**GENERAL NOTES**

- PART I**
- APPROXIMATE LOCATION OF EXISTING MAINS ARE SHOWN. THE CONTRACTOR SHALL TAKE ALL NECESSARY PRECAUTIONS TO PROTECT EXISTING MAINS AND SERVICES AND MAINTAIN UNINTERRUPTED SUPPLY. ANY DAMAGE INCURRED SHALL BE REPAIRED IMMEDIATELY TO THE SATISFACTION OF THE ENGINEER AT THE CONTRACTOR'S EXPENSE.
  - ALL HORIZONTAL CONTROLS ARE BASED ON MARYLAND STATE COORDINATES.
  - ALL VERTICAL CONTROLS ARE BASED ON U.S.G.S DATA.
  - ALL PIPE ELEVATIONS SHOWN ARE INVERT ELEVATIONS.
  - CLEAR ALL UTILITIES BY A MINIMUM OF 6". CLEAR ALL POLES BY 2'-0" MINIMUM OR TUNNEL AS REQUIRED. THE OWNER HAS CONTACTED THE UTILITY COMPANIES AND HAS MADE ARRANGEMENTS FOR BRACING OF POLES AS SHOWN ON DRAWINGS. IN THE EVENT THE CONTRACTOR'S WORK REQUIRES THE BRACING OF ADDITIONAL POLES, ANY COST INCURRED BY THE OWNER FOR BRACING OF ADDITIONAL POLES OR DAMAGES SHALL BE DEDUCTED FROM MONEY OWED THE CONTRACTOR. THE CONTRACTOR SHALL COORDINATE WITH THE UTILITY COMPANIES TO SCHEDULE THE BRACING OF THE POLES.
  - FOR DETAILS NOT SHOWN ON THE DRAWINGS, AND FOR MATERIALS AND CONSTRUCTION METHODS USE HOWARD COUNTY DESIGN MANUAL, VOLUME IV, STANDARD SPECIFICATIONS AND DETAILS FOR CONSTRUCTION (LATEST EDITION). THE CONTRACTOR SHALL HAVE A COPY OF VOLUME IV ON THE JOB.
  - WHERE TEST PITS HAVE BEEN MADE ON EXISTING UTILITIES, THEY ARE NOTED BY THE SYMBOL  AT THE LOCATION OF THE TEST PIT. A NOTE OR NOTES CONTAINING THE RESULTS OF THE TEST PIT OR PITS IS INCLUDED ON THE DRAWINGS. EXISTING UTILITIES IN THE VICINITY OF THE PROPOSED WORK FOR WHICH TEST PITS HAVE NOT BEEN DUG SHALL BE LOCATED BY THE CONTRACTOR TWO WEEKS IN ADVANCE OF CONSTRUCTION.
  - THE CONTRACTOR SHALL NOTIFY THE FOLLOWING UTILITY COMPANIES OR AGENCIES AT LEAST FIVE WORKING DAYS BEFORE STARTING WORK SHOWN THESE PLANS:  

C. & P. TELEPHONE	597-8585
A.T. & T.	865-3803
STATE HIGHWAY ADMINISTRATION	531-5533
B.G. & E. CO. CONTRACTOR SERVICES	850-4620
B.G. & E. CO. UNDER GROUND DAMAGE CONTROL	767-9068
MISS UTILITY	1-800-257-7777
COLONIAL PIPELINE CO.	746-1590
HOWARD COUNTY DEPARTMENT OF PUBLIC WORKS BUREAU OF UTILITIES	313-4900
  - TREES AND SHRUBS ARE TO BE PROTECTED FROM DAMAGE TO THE MAXIMUM EXTENT. TREES AND SHRUBS LOCATED WITHIN THE CONSTRUCTION STRIP ARE NOT TO BE REMOVED OR DAMAGED BY THE CONTRACTOR.
  - THE CONTRACTOR SHALL REMOVE TREES, STUMPS AND ROOTS ALONG LINE OF EXCAVATION. PAYMENT FOR SUCH REMOVAL SHALL BE INCLUDED IN THE UNIT PRICE BID FOR THE CONSTRUCTION OF THE MAIN.
  - THE CONTRACTOR SHALL NOTIFY THE BUREAU OF HIGHWAYS, HOWARD COUNTY, AT (410) 313-2450 AT LEAST FIVE WORKING DAYS BEFORE ANY OPEN CUT OF ANY COUNTY ROAD OR BORING/JACKING OPERATION IN COUNTY ROADS FOR LAYING WATER/SEWER MAIN OR HOUSE CONNECTIONS. THE APPROVAL OF THESE DRAWINGS WILL CONSTITUTE COMPLIANCE WITH DPW REQUIREMENTS PER SECTION 18.14(a) OF THE HOWARD COUNTY CODE.

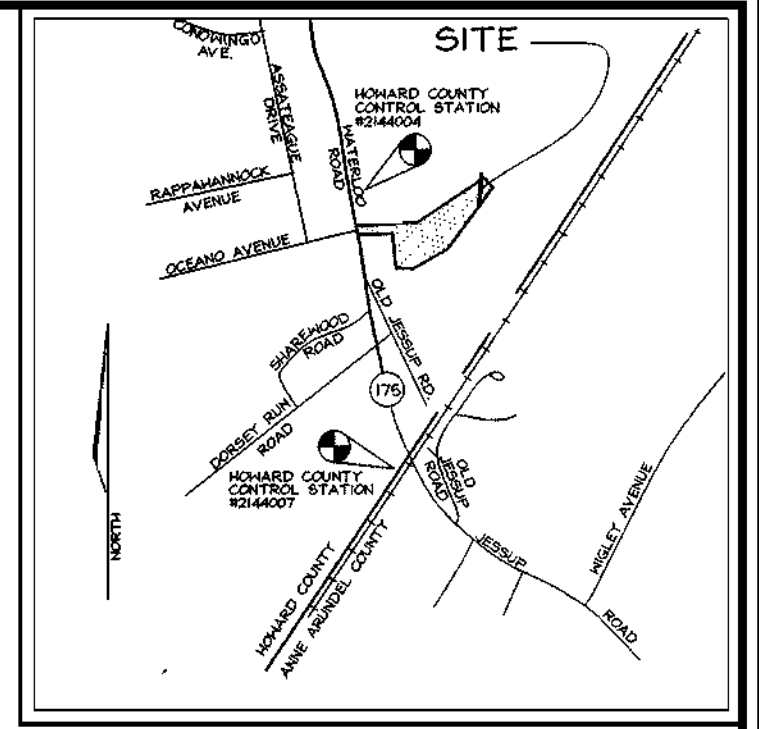
**PART II - WATER**

- ALL WATER MAINS TO BE D.I.P. CLASS 52 UNLESS OTHERWISE NOTED.
- TOPS OF ALL WATER MAINS TO HAVE A MINIMUM OF 3'-1/2' COVER UNLESS OTHERWISE NOTED.
- VALVES ADJACENT TO TEES SHALL BE STRAPPED TO TEES.
- ALL FITTINGS SHALL BE BUTTRESSED OR ANCHORED WITH CONCRETE IN ACCORDANCE WITH THE STANDARD DETAILS UNLESS OTHERWISE PROVIDED FOR ON THE DRAWINGS.
- FIRE HYDRANTS SHALL BE SET TO THE BURY LINE ELEVATIONS SHOWN ON THE DRAWINGS. ALL FIRE HYDRANTS SHALL BE RESTRAINED AND BUTTRESSED WITH CONCRETE IN ACCORDANCE WITH STANDARD DETAILS. SOIL AROUND FIRE HYDRANT SHALL BE COMPACTED IN ACCORDANCE WITH SECTION 1000 AND 1005 OF THE STANDARD SPECIFICATIONS.
- THE CONTRACTOR SHALL NOT OPERATE ANY WATER MAIN VALVES ON THE EXISTING WATER SYSTEM.
- ALL WATER HOUSE CONNECTIONS SHALL BE FOR INSIDE METER SETTING UNLESS OTHERWISE NOTED ON PLANS OR IN SPECIFICATIONS.

**PART III - SEWER**

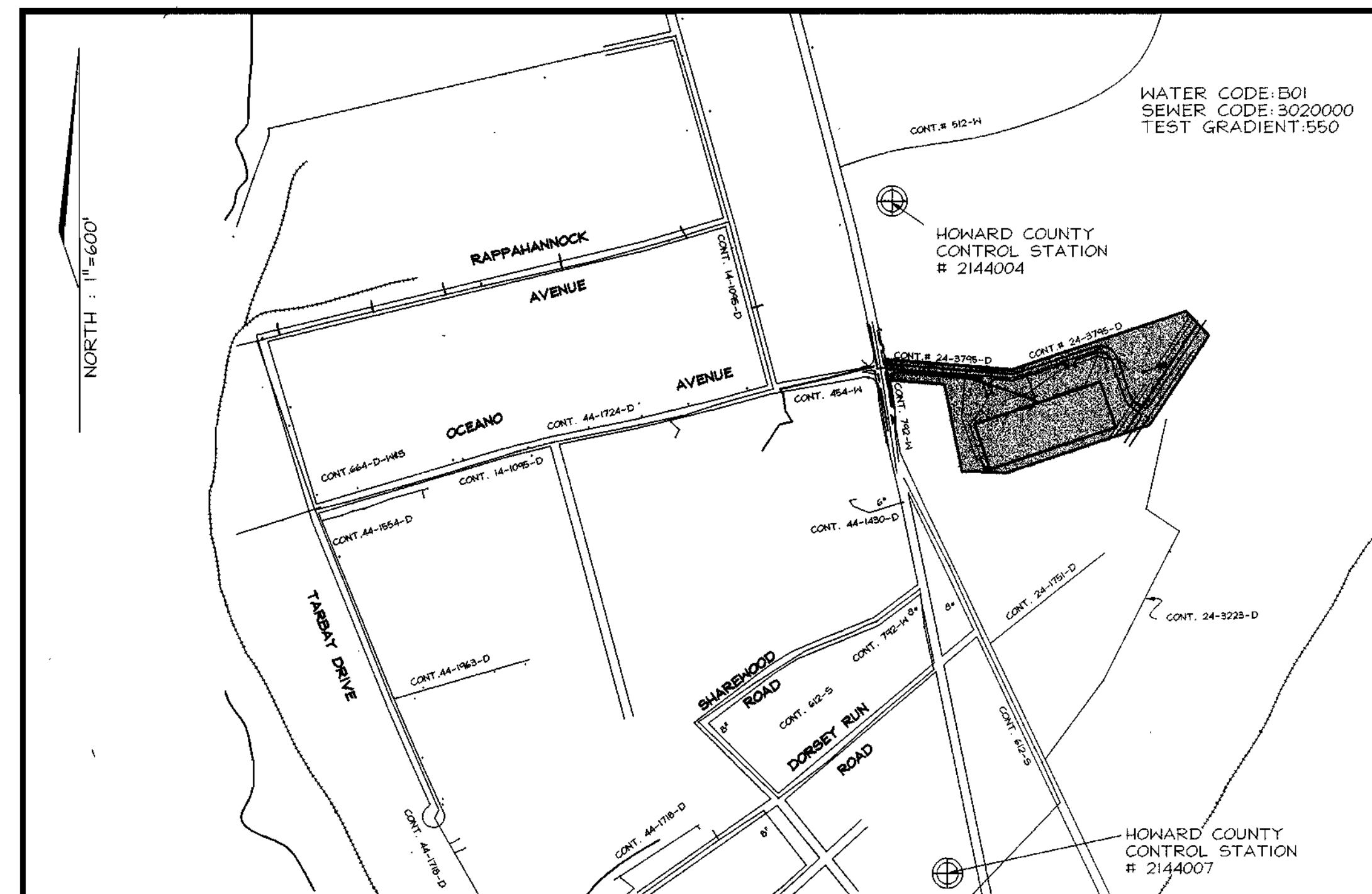
- ALL SEWER MAINS SHALL BE DIP CLASS 52 OR P.V.C. UNLESS OTHERWISE NOTED.
- THE CONTRACTOR SHALL PROVIDE A JOINT IN ALL SEWER MAINS WITHIN 2'-0" OF EXTERIOR MANHOLE WALL.
- ALL MANHOLES SHALL BE 4'-0" INSIDE DIAMETER UNLESS OTHERWISE NOTED.
- MANHOLES SHOWN WITH 12" AND 16" WALLS ARE FOR BRICK MANHOLES ONLY.
- MANHOLES DESIGNATED W.T. IN PLAN AND PROFILE SHALL HAVE WATER TIGHT FRAME AND COVERS, STANDARD DETAIL G5.52. WHERE WATER TIGHT MANHOLE FRAME AND COVER IS USED, SET TOP OF FRAME 18" ABOVE FINISHED GRADE UNLESS OTHERWISE NOTED ON THE DRAWINGS.
- HOUSE(S) WITH THE SYMBOL "C.N.S." INDICATES THAT CELLAR CANNOT BE SERVED.

# JESSUP PARK PUBLIC WATER AND SEWER PLANS HOWARD COUNTY, MARYLAND CONTRACT NO. 24-3795-D



VICINITY MAP  
SCALE: 1"=2000'

QUANTITIES				
NAME OF UTILITY CONTRACTOR :				
SURVEY AND DRAFTING DIVISION AS-BUILT DATE :				
ITEMS	QUANTITIES ESTIMATED	AS-BUILT		
		QUANTITIES	TYPE	MANUFACTURER/SUPPLIER
MANHOLE	1			
8" SEWER	146 LF			
6" VALVE	3			
8" VALVE	3			
8"x6" TEE	4			
8"x8" TEE	2			
FIRE HYDRANT	3			
6"x12" TAPPING SLEEVE AND	1			
8" CAP & BUTTRESS	2			
6" WATER	57			
8" WATER	1401			
2" MHC	10			



LOCATION PLAN  
SCALE: 1"=600'

TYPE OF BUILDING:	WAREHOUSE
NO. OF LOTS/PARCELS:	1
NO. OF WATER HOUSE CONNECTIONS:	1
NO. OF SEWER HOUSE CONNECTIONS:	0
DRAINAGE AREA:	LITTLE PATIENT VIC DORSEY PUMPING STATION
TREATMENT PLANT:	LITTLE PATIENT REGISTRATION AND PARK SAVAGE

SEDIMENT CONTROL MEASURES WILL BE IMPLEMENTED IN ACCORDANCE WITH SECTION 219 OF THE SPECIFICATIONS AND WITH SITE DEVELOPMENT PLAN SDP 99-161

THIS DEVELOPMENT IS APPROVED FOR SOIL EROSION AND SEDIMENT CONTROL BY THE HOWARD COUNTY SOIL CONSERVATION DISTRICT.

REVIEWED FOR HOWARD COUNTY SOIL CONSERVATION DISTRICT AND MEETS TECHNICAL REQUIREMENTS.

*John R. Pollock*  
SOIL CONSERVATION DISTRICT

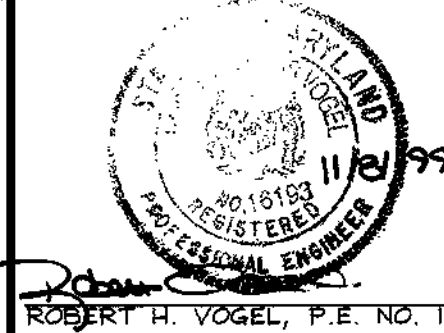
12/1/99  
DATE

*Keef Simmons*  
U.S. SOIL CONSERVATION DISTRICT

12/1/99  
DATE

DEPARTMENT OF PUBLIC WORKS  
HOWARD COUNTY, MARYLAND

DEPARTMENT OF PLANNING & ZONING  
HOWARD COUNTY, MARYLAND



DES: JCO  
DRN: RLP  
CHK: RHV  
DATE: NOV. 1999

TITLE SHEET

JESSUP PARK  
PARCELS A  
CONTRACT NO. 24-3795-D

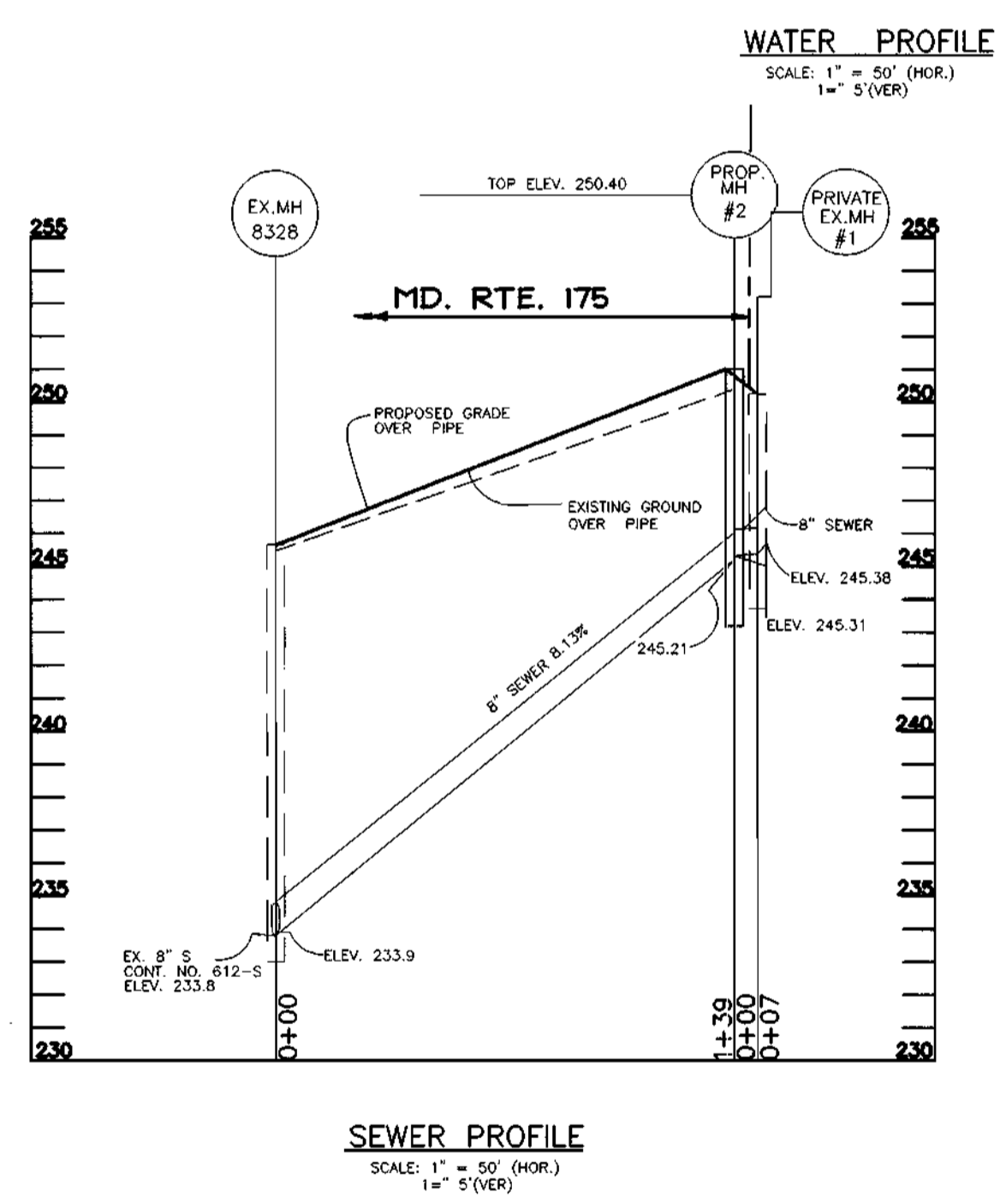
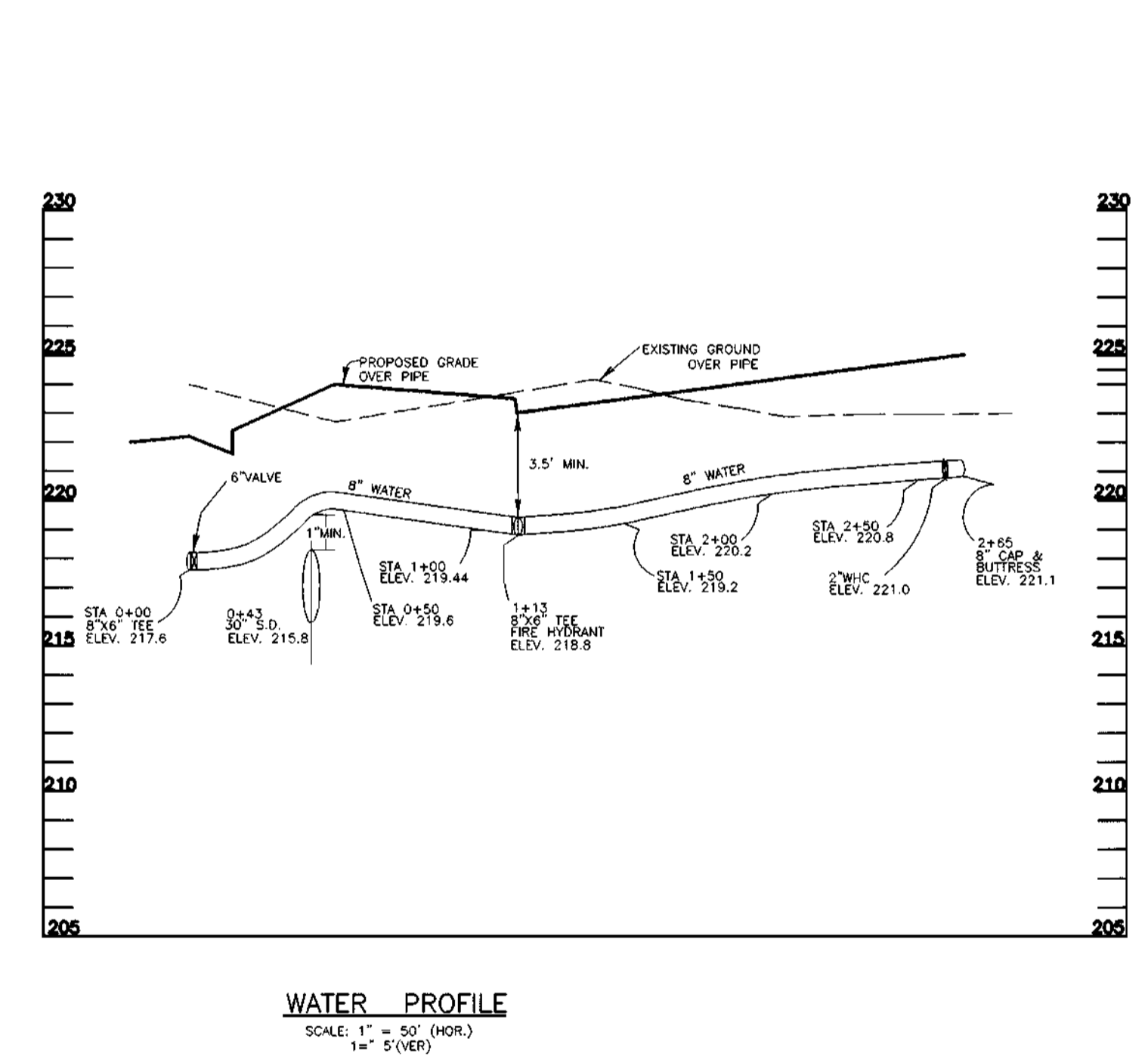
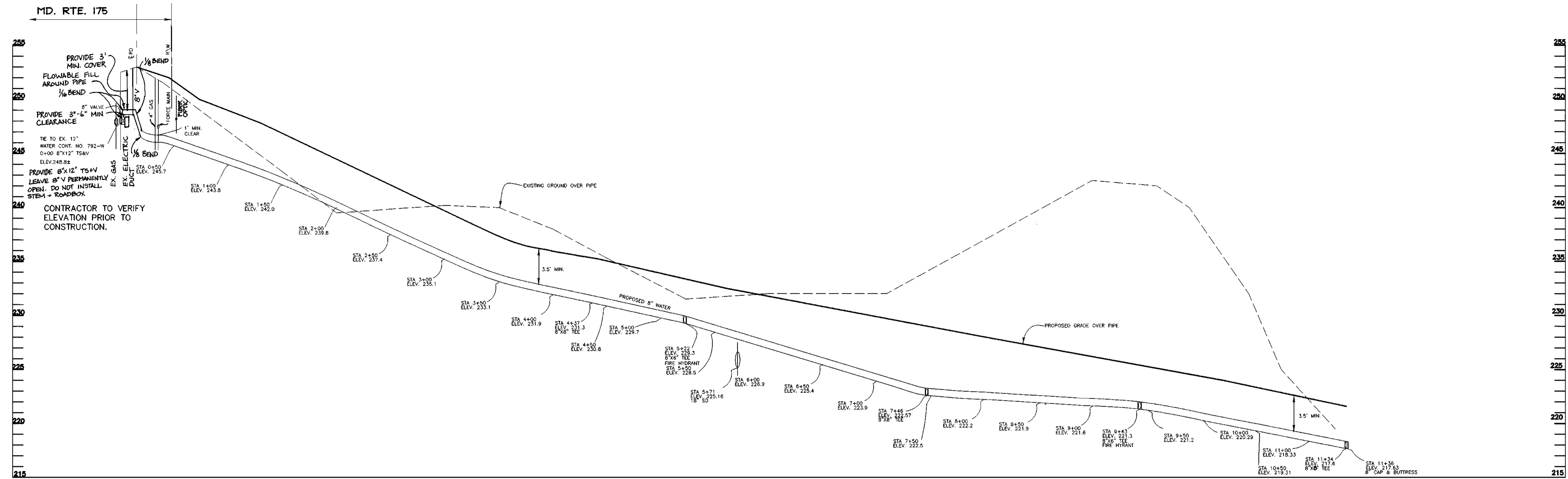
TAX MAP #43  
1ST ELECTION DISTRICT

PARCELS 109, 474, 475, 471, 674  
HOWARD COUNTY, MARYLAND

SCALE AS SHOWN

SHEET 1 OF 3





WATER PROFILE  
SCALE: 1" = 50' (HOR.)  
1" = 5' (VER.)

SEWER PROFILE  
SCALE: 1" = 50' (HOR.)  
1" = 5' (VER.)

DEPARTMENT OF PUBLIC WORKS  
HOWARD COUNTY, MARYLAND

*Robert H. Vogel*  
CHIEF, BUREAU OF UTILITIES

11-22-99  
DATE

DEPARTMENT OF PLANNING & ZONING  
HOWARD COUNTY, MARYLAND

*Robert H. Vogel*  
CHIEF, DEVELOPMENT ENGINEERING DIVISION

12/2/99  
DATE

**VOGEL & ASSOCIATES**  
ENGINEERS-SURVEYORS-PLANNERS

3691 Park Avenue, Suite 101 • Ellicott City, Maryland 21043  
Tel 410.461.5828 Fax 410.465.3966

*Robert H. Vogel*  
PROFESSIONAL ENGINEER  
NO. 16193  
ROBERT H. VOGEL, P.E. NO. 16193

DES: JCO					
DRN: RLP					
CHK: RHV					
DATE: NOV. 1999	JT	1	REVISE WATER LINE TO AVOID ELECTRIC DUCT	8/15/01	
	BY	NO.	REVISION	DATE	

**WATER AND SEWER PROFILES**

600' SCALE MAP NO. 43 BLOCK NO. 21

**JESSUP PARK**  
PARCEL A  
CONTRACT 24-3795-D

TAX MAP #43  
1ST. ELECTION DISTRICT

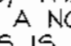
PARCELS 109, 474, 475, 471, AND 975  
HOWARD COUNTY, MARYLAND

SCALE AS SHOWN

SHEET 3 OF 3

**GENERAL NOTES**

**PART I**

- APPROXIMATE LOCATION OF EXISTING MAINS ARE SHOWN. THE CONTRACTOR SHALL TAKE ALL NECESSARY PRECAUTIONS TO PROTECT EXISTING MAINS AND SERVICES AND MAINTAIN UNINTERRUPTED SUPPLY. ANY DAMAGE INCURRED SHALL BE REPAIRED IMMEDIATELY TO THE SATISFACTION OF THE ENGINEER AT THE CONTRACTOR'S EXPENSE.
- ALL HORIZONTAL CONTROLS ARE BASED ON MARYLAND STATE COORDINATES.
- ALL VERTICAL CONTROLS ARE BASED ON U.S.G.S DATA.
- ALL PIPE ELEVATIONS SHOWN ARE INVERT ELEVATIONS.
- CLEAR ALL UTILITIES BY A MINIMUM OF 6". CLEAR ALL POLES BY 2'-0" MINIMUM OR TUNNEL AS REQUIRED. THE OWNER HAS CONTACTED THE UTILITY COMPANIES AND HAS MADE ARRANGEMENTS FOR BRACING OF POLES AS SHOWN ON DRAWINGS. IN THE EVENT THE CONTRACTOR'S WORK REQUIRES THE BRACING OF ADDITIONAL POLES, ANY COST INCURRED BY THE OWNER FOR BRACING OF ADDITIONAL POLES OR DAMAGES SHALL BE DEDUCTED FROM MONEY OWED THE CONTRACTOR. THE CONTRACTOR SHALL COORDINATE WITH THE UTILITY COMPANIES TO SCHEDULE THE BRACING OF THE POLES.
- FOR DETAILS NOT SHOWN ON THE DRAWINGS, AND FOR MATERIALS AND CONSTRUCTION METHODS USE HOWARD COUNTY DESIGN MANUAL, VOLUME IV, STANDARD SPECIFICATIONS AND DETAILS FOR CONSTRUCTION (LATEST EDITION). THE CONTRACTOR SHALL HAVE A COPY OF VOLUME IV ON THE JOB.
- WHERE TEST PITS HAVE BEEN MADE ON EXISTING UTILITIES, THEY ARE NOTED BY THE SYMBOL  AT THE LOCATION OF THE TEST PIT. A NOTE OR NOTES CONTAINING THE RESULTS OF THE TEST PIT OR PITS IS INCLUDED ON THE DRAWINGS. EXISTING UTILITIES IN THE VICINITY OF THE PROPOSED WORK FOR WHICH TEST PITS HAVE NOT BEEN DONE SHALL BE LOCATED BY THE CONTRACTOR TWO WEEKS IN ADVANCE OF CONSTRUCTION.
- THE CONTRACTOR SHALL NOTIFY THE FOLLOWING UTILITY COMPANIES OR AGENCIES AT LEAST FIVE WORKING DAYS BEFORE STARTING WORK SHOWN THESE PLANS:  

C. & P. TELEPHONE	597-8585
A.T. & T.	865-3503
STATE HIGHWAY ADMINISTRATION	531-5533
B.G. & E. CO. CONTRACTOR SERVICES	850-4620
B.G. & E. CO. UNDER GROUND DAMAGE CONTROL	787-9068
MISS. UTILITY	1-800-257-7777
COLONIAL PIPELINE CO.	795-1530
HOWARD COUNTY DEPARTMENT OF PUBLIC WORKS BUREAU OF UTILITIES	313-4900
- TREES AND SHRUBS ARE TO BE PROTECTED FROM DAMAGE TO THE MAXIMUM EXTENT. TREES AND SHRUBS LOCATED WITHIN THE CONSTRUCTION STRIP ARE NOT TO BE REMOVED OR DAMAGED BY THE CONTRACTOR.
- THE CONTRACTOR SHALL REMOVE TREES, STUMPS AND ROOTS ALONG LINE OF EXCAVATION. PAYMENT FOR SUCH REMOVAL SHALL BE INCLUDED IN THE UNIT PRICE BID FOR THE CONSTRUCTION OF THE MAIN.
- THE CONTRACTOR SHALL NOTIFY THE BUREAU OF HIGHWAYS, HOWARD COUNTY, AT (410) 313-2450 AT LEAST FIVE WORKING DAYS BEFORE ANY OPEN CUT OF ANY COUNTY ROAD OR BORING/JACKING OPERATION IN COUNTY ROADS FOR LAYING WATER/SEWER MAIN OR HOUSE CONNECTIONS. THE APPROVAL OF THESE DRAWINGS WILL CONSTITUTE COMPLIANCE WITH DPH REQUIREMENTS PER SECTION 18.14(a) OF THE HOWARD COUNTY CODE.

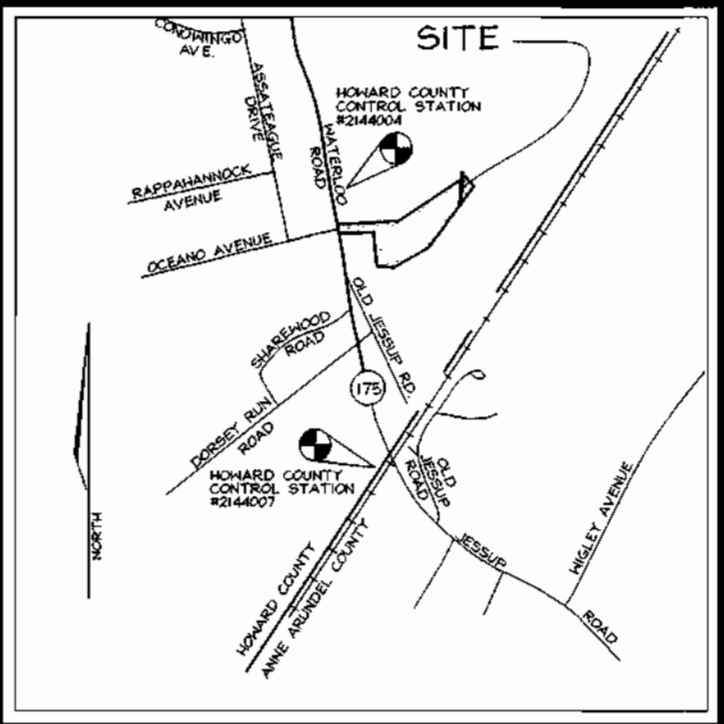
**PART II - WATER**

- ALL WATER MAINS TO BE D.I.P. CLASS 52 UNLESS OTHERWISE NOTED.
- TOPS OF ALL WATER MAINS TO HAVE A MINIMUM OF 3'-1/2' COVER UNLESS OTHERWISE NOTED.
- VALVES ADJACENT TO TEES SHALL BE STRAPPED TO TEES.
- ALL FITTINGS SHALL BE BUTTRESSED OR ANCHORED WITH CONCRETE IN ACCORDANCE WITH THE STANDARD DETAILS UNLESS OTHERWISE PROVIDED FOR ON THE DRAWINGS.
- FIRE HYDRANTS SHALL BE SET TO THE BURY LINE ELEVATIONS SHOWN ON THE DRAWINGS. ALL FIRE HYDRANTS SHALL BE RESTRAINED AND BUTTRESSED WITH CONCRETE IN ACCORDANCE WITH STANDARD DETAILS. SOIL AROUND FIRE HYDRANT SHALL BE COMPACTED IN ACCORDANCE WITH SECTION 1000 AND 1005 OF THE STANDARD SPECIFICATIONS.
- THE CONTRACTOR SHALL NOT OPERATE ANY WATER MAIN VALVES ON THE EXISTING WATER SYSTEM.
- ALL WATER HOUSE CONNECTIONS SHALL BE FOR INSIDE METER SETTING UNLESS OTHERWISE NOTED ON PLANS OR IN SPECIFICATIONS.

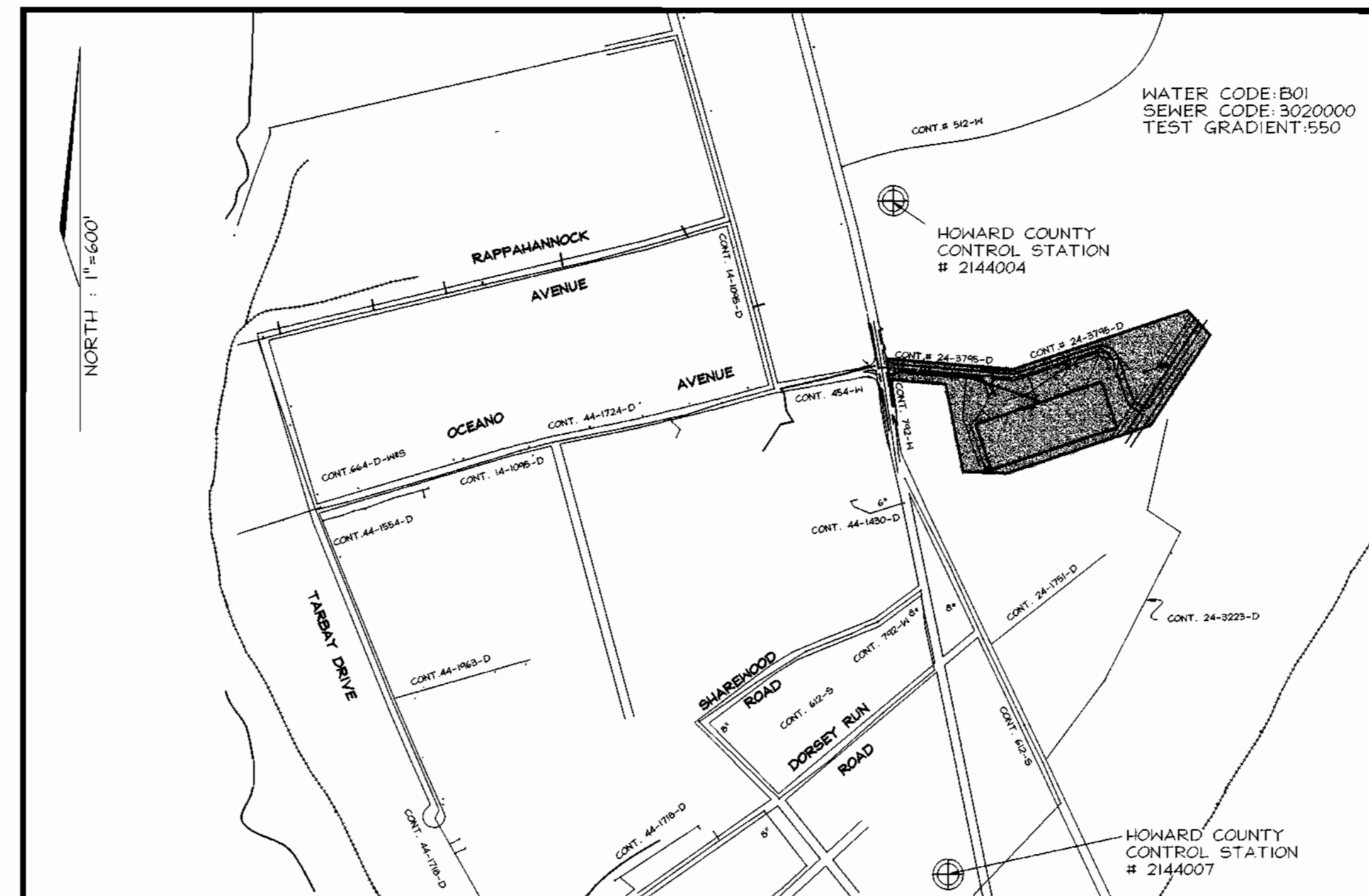
**PART III - SEWER**

- ALL SEWER MAINS SHALL BE DIP CLASS 52 OR P.V.C. UNLESS OTHERWISE NOTED.
- THE CONTRACTOR SHALL PROVIDE A JOINT IN ALL SEWER MAINS WITHIN 2'-0" OF EXTERIOR MANHOLE WALL.
- ALL MANHOLES SHALL BE 4'-0" INSIDE DIAMETER UNLESS OTHERWISE NOTED.
- MANHOLES SHOWN WITH 12" AND 16" WALLS ARE FOR BRICK MANHOLES ONLY.
- MANHOLES DESIGNATED W.T. IN PLAN AND PROFILE SHALL HAVE WATER-TIGHT FRAME AND COVERS. STANDARD DETAIL GE.52 WHERE WATER-TIGHT FRAME AND COVER IS USED, SET TOP OF FRAME 16" ABOVE FINISHED GRADE UNLESS OTHERWISE NOTED ON THE DRAWINGS.
- HOUSE(S) WITH THE SYMBOL "C.N.S." INDICATES THAT CELLAR CANNOT BE SERVED.

# JESSUP PARK PUBLIC WATER AND SEWER PLANS HOWARD COUNTY, MARYLAND CONTRACT NO. 24-3795-D



VICINITY MAP  
SCALE: 1"=2000'



LOCATION PLAN  
SCALE: 1"=600'

QUANTITIES				
NAME OF UTILITY CONTRACTOR :				
SURVEY AND DRAFTING DIVISION AS-BUILT DATE :				
ITEMS	QUANTITIES ESTIMATED	AS-BUILT		
		QUANTITIES	TYPE	MANUFACTURER/SUPPLIER
MANHOLE	1			
8" SEWER	146 LF			
6" VALVE	3			
8" VALVE	4			
8"X6" TEE	4			
8"X8" TEE	2			
FIRE HYDRANT	3			
8"X12" TAPPING SLEEVE AND 8" CAP & BUTTRESS	1			
6" WATER	57			
8" WATER	1401			
2" WHC	10			

TYPE OF BUILDING:	WAREHOUSE
NO. OF LOTS/PARCELS:	1
NO. OF WATER HOUSE CONNECTIONS:	1
NO. OF SEWER HOUSE CONNECTIONS:	0
DRAINAGE AREA:	LITTLE PATUXENT VIC DORSEY PUMPING STATION
TREATMENT PLANT:	LITTLE PATUXENT RECREATION AND PARK SAVAGE

SEDIMENT CONTROL MEASURES WILL BE IMPLEMENTED IN ACCORDANCE WITH SECTION 219 OF THE SPECIFICATIONS AND WITH SITE DEVELOPMENT PLAN SDP 99-161

THIS DEVELOPMENT IS APPROVED FOR SOIL EROSION AND SEDIMENT CONTROL BY THE HOWARD COUNTY SOIL CONSERVATION DISTRICT.

REVIEWED FOR HOWARD COUNTY SOIL CONSERVATION DISTRICT AND MEETS TECHNICAL REQUIREMENTS.

*John R. Roberts* 12/1/99 DATE  
SOIL CONSERVATION DISTRICT

*Clayton Simmons* 12/1/99 DATE  
U.S. SOIL CONSERVATION DISTRICT

DEPARTMENT OF PUBLIC WORKS  
HOWARD COUNTY, MARYLAND

*Robert V. Berman* 11-22-99 DATE  
CHIEF, BUREAU OF UTILITIES

DEPARTMENT OF PLANNING & ZONING  
HOWARD COUNTY, MARYLAND

*Clayton Simmons* 12/2/99 DATE  
CHIEF, DEVELOPMENT ENGINEERING DIVISION

**VOGEL & ASSOCIATES**  
ENGINEERS-SURVEYORS-PLANNERS

3691 Park Avenue, Suite 101 • Ellicott City, Maryland 21043  
Tel 410.461.5828 Fax 410.465.3966

*Robert H. Vogel* 11/21/99  
REGISTERED PROFESSIONAL ENGINEER  
ROBERT H. VOGEL, P.E. NO. 16193

DES: JCO  
DRN: RLP  
CHK: RHV  
DATE: NOV. 1999

BY	NO.	REVISION	DATE
JT	1	REVISE WATER LINE TO AVOID ELECTRIC DUCT	8/15/01

TITLE SHEET

600' SCALE MAP NO. 43 BLOCK NO. 21

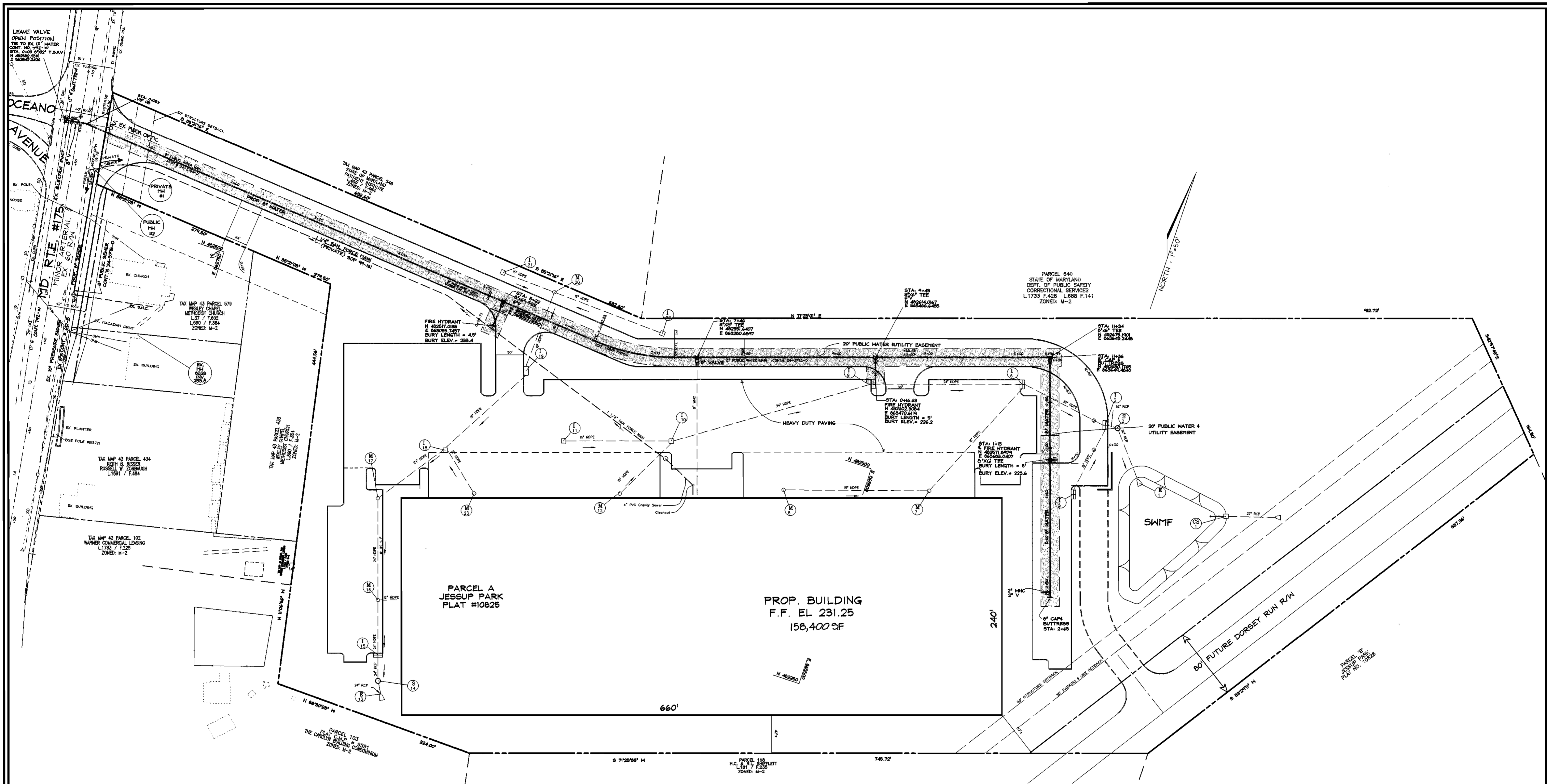
JESSUP PARK  
PARCEL A  
CONTRACT NO. 24-3795-D

TAX MAP #43  
1ST ELECTION DISTRICT

PARCELS 109, 474, 475, 471, 674  
HOWARD COUNTY, MARYLAND

SCALE AS SHOWN

SHEET 1 OF 3



PLAN  
SCALE: 1"=50'

SEDIMENT CONTROL MEASURES WILL BE IMPLEMENTED IN ACCORDANCE WITH SECTION 219 OF THE SPECIFICATIONS AND WITH SITE DEVELOPMENT PLAN SDP 99-161

THIS DEVELOPMENT IS APPROVED FOR SOIL EROSION AND SEDIMENT CONTROL BY THE HOWARD COUNTY SOIL CONSERVATION DISTRICT. <i>John R. Roberts</i> SOIL CONSERVATION DISTRICT DATE: 12/1/99	REVIEWED FOR HOWARD COUNTY SOIL CONSERVATION DISTRICT AND MEETS TECHNICAL REQUIREMENTS. <i>Cheryl Simmons</i> SOIL CONSERVATION DISTRICT DATE: 12/1/99
--	---

DEPARTMENT OF PUBLIC WORKS  
HOWARD COUNTY, MARYLAND  
*Robert H. Vogell*  
CHIEF, BUREAU OF UTILITIES  
DATE: 11-22-99

DEPARTMENT OF PLANNING & ZONING  
HOWARD COUNTY, MARYLAND  
*Cheryl Simmons*  
CHIEF, DEVELOPMENT ENGINEERING DIVISION  
DATE: 12/1/99

**VOGEL & ASSOCIATES**  
ENGINEERS-SURVEYORS-PLANNERS  
3691 Park Avenue, Suite 101 • Elkridge City, Maryland 21043  
Tel 410.461.5828 Fax 410.465.3966  
ROBERT H. VOGEL, P.E. NO. 16193

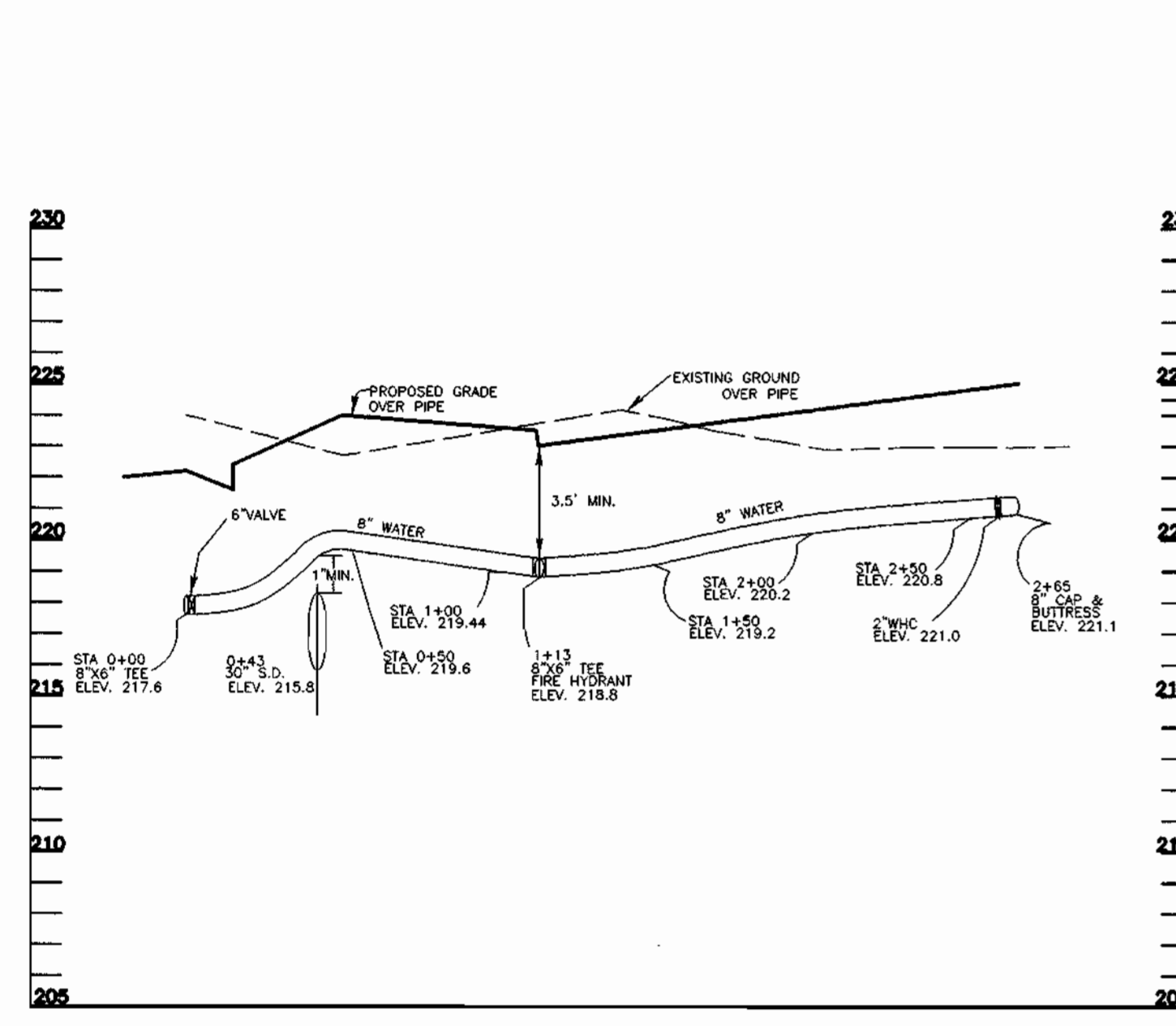
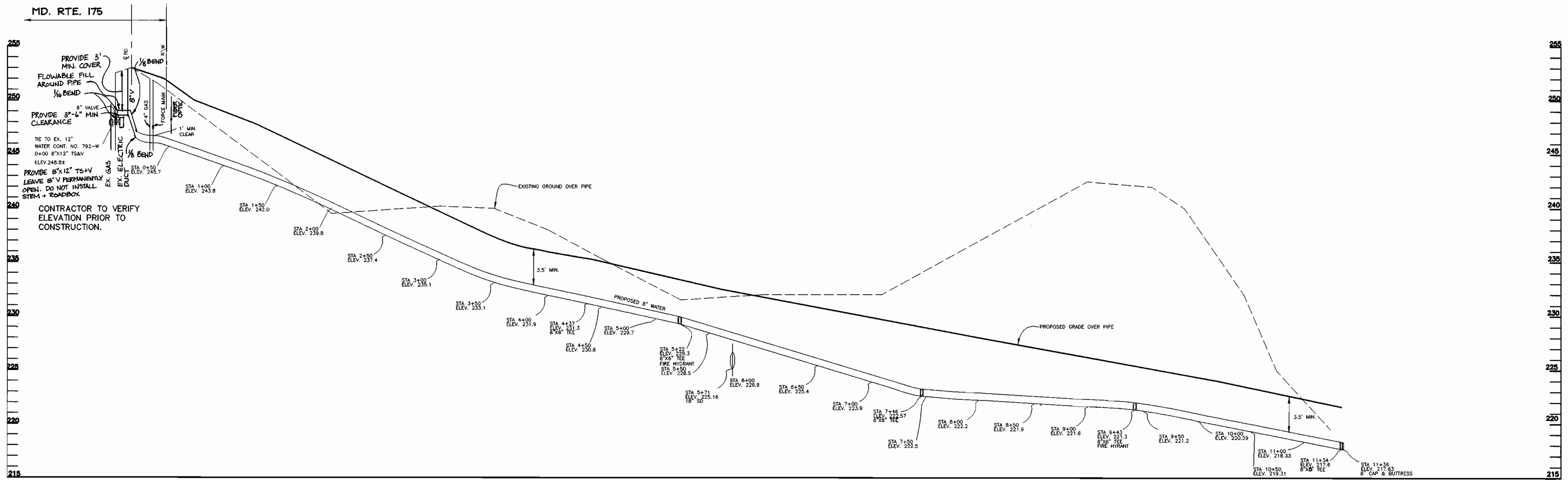


DES:	JCO				
DRN:	RLP				
CHK:	RHV				
DATE:	NOV. 1999	JT	1	REVISE WATER LINE TO AVOID ELECTRIC DUCT	8/15/01
BY:	NO.			REVISION	DATE

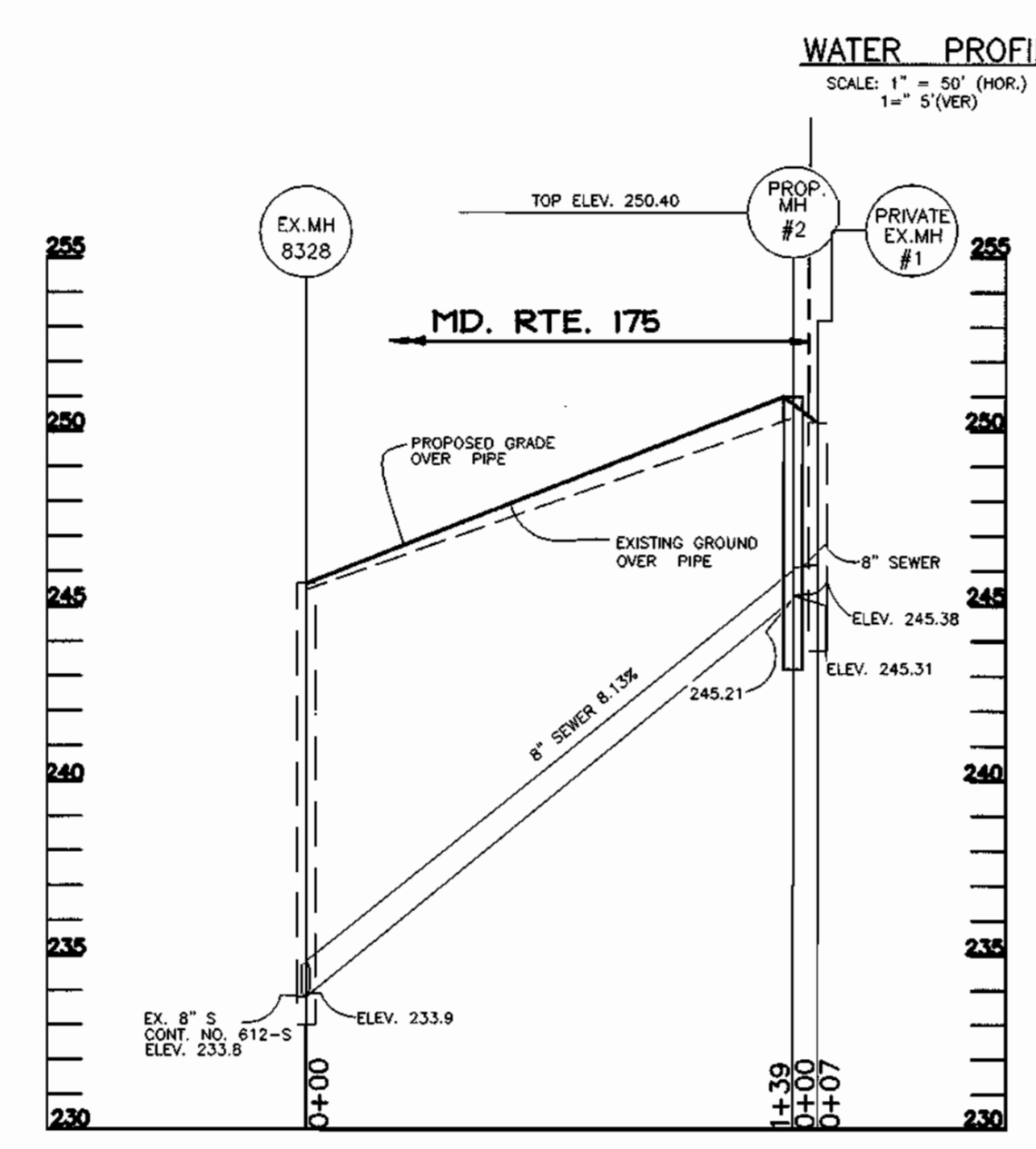
WATER AND SEWER PLAN  
600' SCALE MAP NO. 43 BLOCK NO. 21

**JESSUP PARK**  
PARCEL 'A'  
CONTRACT 24-3795-D  
TAX MAP #43  
1ST TELELECTION DISTRICT  
PARCELS 109,474,475,471,674  
HOWARD COUNTY, MARYLAND

SCALE AS SHOWN  
SHEET 2 OF 3



**WATER PROFILE**  
SCALE: 1" = 50' (HOR.)  
1" = 5' (VER.)

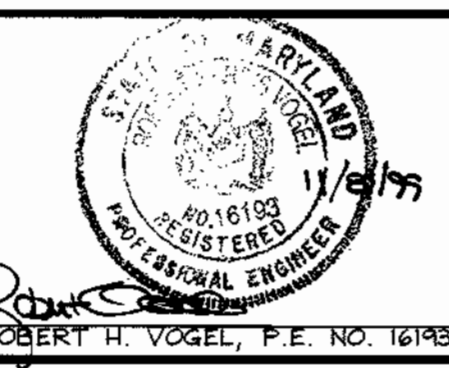


**SEWER PROFILE**  
SCALE: 1" = 50' (HOR.)  
1" = 5' (VER.)

DEPARTMENT OF PUBLIC WORKS  
HOWARD COUNTY, MARYLAND  
*Robert H. Vogel*  
CHIEF, BUREAU OF UTILITIES  
11-22-99

DEPARTMENT OF PLANNING & ZONING  
HOWARD COUNTY, MARYLAND  
*Robert H. Vogel*  
CHIEF, DEVELOPMENT ENGINEERING DIVISION  
12/2/99

**VOGEL & ASSOCIATES**  
ENGINEERS-SURVEYORS-PLANNERS  
3691 Park Avenue, Suite 101 • Ellicott City, Maryland 21043  
Tel 410.461.5828 Fax 410.465.3966



DES: JCO					
DRN: RLP					
CHK: RHV					
DATE: NOV. 1999	JT	I	REVISE WATERLINE TO AVOID ELECTRIC DUCT	8/15/01	
	BY	NO.	REVISION	DATE	

**WATER AND SEWER PROFILES**  
600' SCALE MAP NO. 43 BLOCK NO. 21

**JESSUP PARK**  
PARCEL 'A'  
CONTRACT 24-3795-D  
TAX MAP #43 PARCELS 109,474, 475, 471, AND 975  
1ST. ELECTION DISTRICT HOWARD COUNTY, MARYLAND

SCALE AS SHOWN  
SHEET 3 OF 3

**GENERAL NOTES**

**PART I**

- APPROXIMATE LOCATION OF EXISTING MAINS ARE SHOWN. THE CONTRACTOR SHALL TAKE ALL NECESSARY PRECAUTIONS TO PROTECT EXISTING MAINS AND SERVICES AND MAINTAIN UNINTERRUPTED SUPPLY. ANY DAMAGE INCURRED SHALL BE REPAIRED IMMEDIATELY TO THE SATISFACTION OF THE ENGINEER AT THE CONTRACTOR'S EXPENSE.
- ALL HORIZONTAL CONTROLS ARE BASED ON MARYLAND STATE COORDINATES.
- ALL VERTICAL CONTROLS ARE BASED ON U.S.G.S DATA.
- ALL PIPE ELEVATIONS SHOWN ARE INVERT ELEVATIONS.
- CLEAR ALL UTILITIES BY A MINIMUM OF 6'. CLEAR ALL POLES BY 2'-0" MINIMUM OR TUNNEL AS REQUIRED. THE OWNER HAS CONTACTED THE UTILITY COMPANIES AND HAS MADE ARRANGEMENTS FOR BRACING OF POLES AS SHOWN ON DRAWINGS. IN THE EVENT THE CONTRACTOR'S WORK REQUIRES THE BRACING OF ADDITIONAL POLES, ANY COST INCURRED BY THE OWNER FOR BRACING OF ADDITIONAL POLES OR DAMAGES SHALL BE DEDUCTED FROM MONEY OWED THE CONTRACTOR. THE CONTRACTOR SHALL COORDINATE WITH THE UTILITY COMPANIES TO SCHEDULE THE BRACING OF THE POLES.
- FOR DETAILS NOT SHOWN ON THE DRAWINGS, AND FOR MATERIALS AND CONSTRUCTION METHODS USE HOWARD COUNTY DESIGN MANUAL, VOLUME IV, STANDARD SPECIFICATIONS AND DETAILS FOR CONSTRUCTION (LATEST EDITION). THE CONTRACTOR SHALL HAVE A COPY OF VOLUME IV ON THE JOB.
- WHERE TEST PITS HAVE BEEN MADE ON EXISTING UTILITIES, THEY ARE NOTED BY THE SYMBOL AT THE LOCATION OF THE TEST PIT. A NOTE OR NOTES CONTAINING THE RESULTS OF THE TEST PIT OR PITS IS INCLUDED ON THE DRAWINGS. EXISTING UTILITIES IN THE VICINITY OF THE PROPOSED WORK FOR WHICH TEST PITS HAVE NOT BEEN DUG SHALL BE LOCATED BY THE CONTRACTOR TWO WEEKS IN ADVANCE OF CONSTRUCTION.
- THE CONTRACTOR SHALL NOTIFY THE FOLLOWING UTILITY COMPANIES OR AGENCIES AT LEAST FIVE WORKING DAYS BEFORE STARTING WORK SHOWN THESE PLANS:  

C. & P. TELEPHONE	597-8585
A.T. & T.	265-3603
STATE HIGHWAY ADMINISTRATION	531-5533
B.G.#E. CO. CONTRACTOR SERVICES	850-4620
B.G.#E. CO. UNDER GROUND DAMAGE CONTROL	787-9068
MISSISSIPPI UTILITY	1-800-257-7777
COLONIAL PIPELINE CO.	795-1390
HOWARD COUNTY DEPARTMENT OF PUBLIC WORKS	313-4900
BUREAU OF UTILITIES	
- TREES AND SHRUBS ARE TO BE PROTECTED FROM DAMAGE TO THE MAXIMUM EXTENT. TREES AND SHRUBS LOCATED WITHIN THE CONSTRUCTION STRIP ARE NOT TO BE REMOVED OR DAMAGED BY THE CONTRACTOR.
- THE CONTRACTOR SHALL REMOVE TREES, STUMPS AND ROOTS ALONG LINE OF EXCAVATION. PAYMENT FOR SUCH REMOVAL SHALL BE INCLUDED IN THE UNIT PRICE BID FOR THE CONSTRUCTION OF THE MAIN.
- THE CONTRACTOR SHALL NOTIFY THE BUREAU OF HIGHWAYS, HOWARD COUNTY, AT (410) 313-2450 AT LEAST FIVE WORKING DAYS BEFORE ANY OPEN CUT OF ANY COUNTY ROAD OR BORING/JACKING OPERATION IN COUNTY ROADS FOR LAYING WATER/SEWER MAIN OR HOUSE CONNECTIONS. THE APPROVAL OF THESE DRAWINGS WILL CONSTITUTE COMPLIANCE WITH DPW REQUIREMENTS PER SECTION 18.14(a) OF THE HOWARD COUNTY CODE.

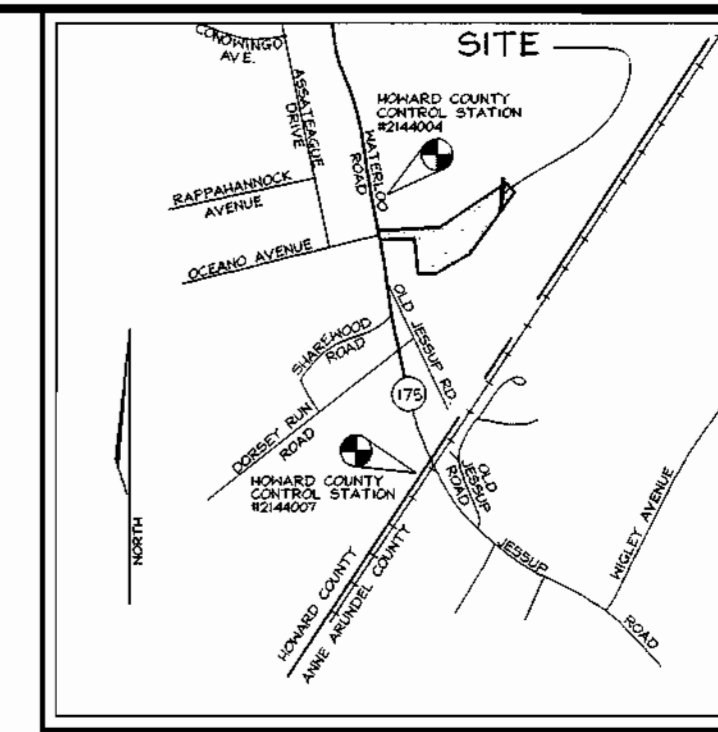
**PART II - WATER**

- ALL WATER MAINS TO BE D.I.P. CLASS 52 UNLESS OTHERWISE NOTED.
- TOPS OF ALL WATER MAINS TO HAVE A MINIMUM OF 3-1/2' COVER UNLESS OTHERWISE NOTED.
- VALVES ADJACENT TO TEES SHALL BE STRAPPED TO TEES.
- ALL FITTINGS SHALL BE BUTTRESSED OR ANCHORED WITH CONCRETE IN ACCORDANCE WITH THE STANDARD DETAILS UNLESS OTHERWISE PROVIDED FOR ON THE DRAWINGS.
- FIRE HYDRANTS SHALL BE SET TO THE BURY LINE ELEVATIONS SHOWN ON THE DRAWINGS. ALL FIRE HYDRANTS SHALL BE RESTRAINED AND BUTTRESSED WITH CONCRETE IN ACCORDANCE WITH STANDARD DETAILS. SOIL AROUND FIRE HYDRANT SHALL BE COMPACTED IN ACCORDANCE WITH SECTION 1000 AND 1005 OF THE STANDARD SPECIFICATIONS.
- THE CONTRACTOR SHALL NOT OPERATE ANY WATER MAIN VALVES ON THE EXISTING WATER SYSTEM.
- ALL WATER HOUSE CONNECTIONS SHALL BE FOR INSIDE METER SETTING UNLESS OTHERWISE NOTED ON PLANS OR IN SPECIFICATIONS.

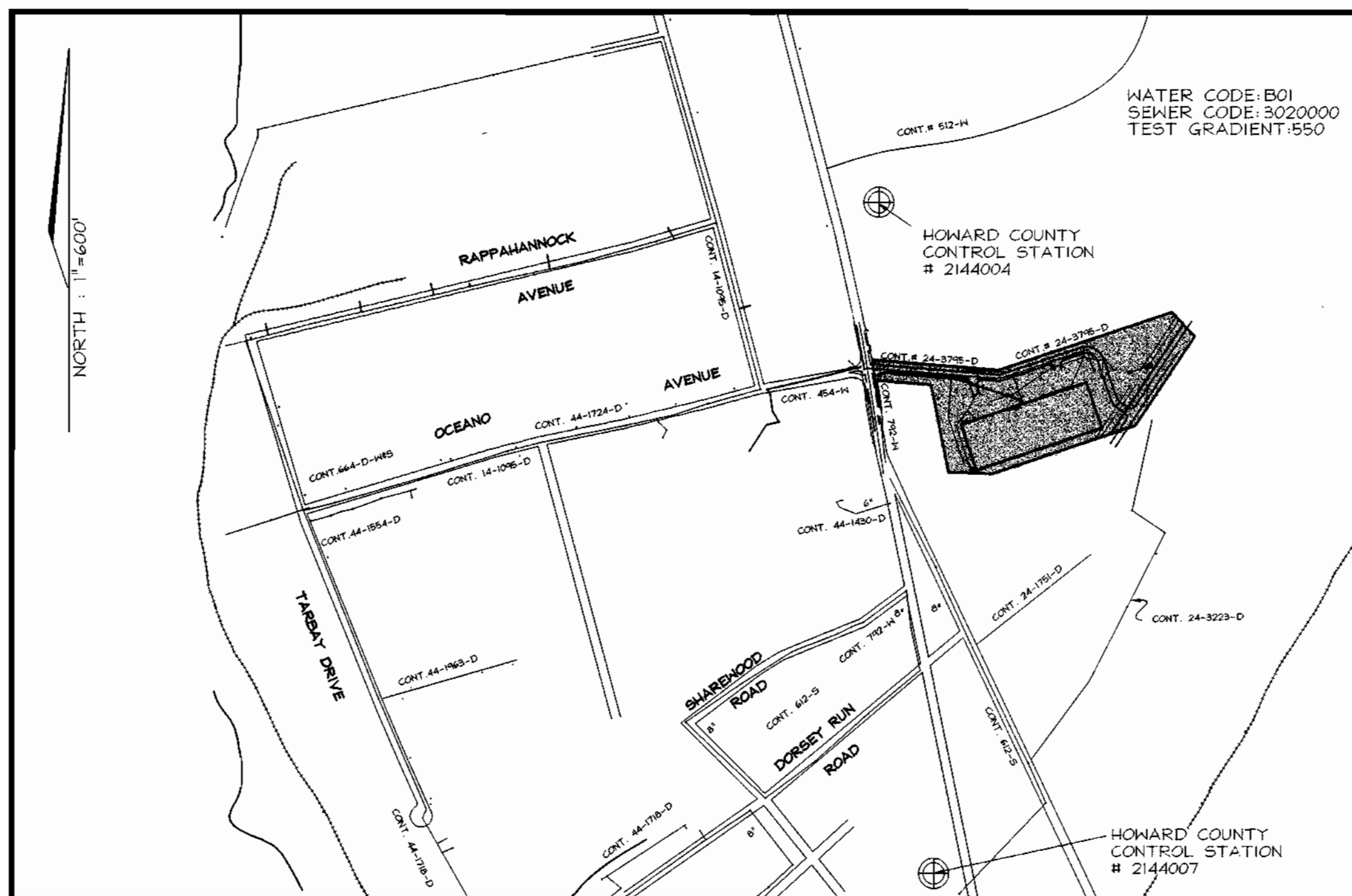
**PART III - SEWER**

- ALL SEWER MAINS SHALL BE DIP CLASS 52 OR P.V.C. UNLESS OTHERWISE NOTED.
- THE CONTRACTOR SHALL PROVIDE A JOINT IN ALL SEWER MAINS WITHIN 2'-0" OF EXTERIOR MANHOLE WALL.
- ALL MANHOLES SHALL BE 4'-0" INSIDE DIAMETER UNLESS OTHERWISE NOTED.
- MANHOLES SHOWN WITH 12" AND 16" WALLS ARE FOR BRICK MANHOLES ONLY.
- MANHOLES DESIGNATED W.T. IN PLAN AND PROFILE SHALL HAVE WATERTIGHT FRAME AND COVERS, STANDARD DETAIL G5.52. WHERE WATERTIGHT MANHOLE FRAME AND COVER IS USED, SET TOP OF FRAME 18" ABOVE FINISHED GRADE UNLESS OTHERWISE NOTED ON THE DRAWINGS.
- HOUSE(S) WITH THE SYMBOL "C.N.S." INDICATES THAT CELLAR CANNOT BE SERVED.

# JESSUP PARK PUBLIC WATER AND SEWER PLANS HOWARD COUNTY, MARYLAND CONTRACT NO. 24-3795-D



VICINITY MAP  
SCALE: 1"=2000'



LOCATION PLAN  
SCALE: 1"=600'

**QUANTITIES**

NAME OF UTILITY CONTRACTOR : TAYLOR CONTRACTING				
SURVEY AND DRAFTING DIVISION AS-BUILT DATE :				
ITEMS	QUANTITIES ESTIMATED	AS-BUILT		
		QUANTITIES	TYPE	MANUFACTURER/SUPPLIER
MANHOLE	1	1		ATLANTIC
8" SEWER	146 LF	146	SOR 36	J-M PIPE
6" VALVE	3	3	GATE VALVE	MUELLER CO.
8" VALVE	4	4	GATE VALVE	" "
8"x6" TEE	4	3	MJ TEE	UNION FOUNDRY
8"x8" TEE	2	2	MJ TEE	" "
FIRE HYDRANT	3	3		MUELLER CO.
8"x12" TAPPING SLEEVE AND	1	1	TOP SLEEVE	" "
8" CAP & BUTTRESS	2	2	CAP	UNION FOUNDRY
6" WATER	57	59	D.I.P.	ATLANTIC STATES
8" WATER	1401	1403	D.I.P.	" "
2" WHC	10			

WAREHOUSE	
TYPE OF BUILDING:	1
NO. OF LOTS/PARCELS:	1
NO. OF WATER HOUSE CONNECTIONS:	1
NO. OF SEWER HOUSE CONNECTIONS:	0
DRAINAGE AREA:	LITTLE PATUXENT VIC DORSEY PUMPING STATION
TREATMENT PLANT:	LITTLE PATUXENT REGULATION AND PARK SAVAGE

SEDIMENT CONTROL MEASURES WILL BE IMPLEMENTED IN ACCORDANCE WITH SECTION 219 OF THE SPECIFICATIONS AND WITH SITE DEVELOPMENT PLAN SDP 99-161

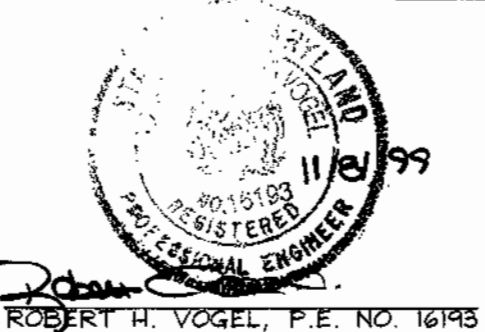
THIS DEVELOPMENT IS APPROVED FOR SOIL EROSION AND SEDIMENT CONTROL BY THE HOWARD COUNTY SOIL CONSERVATION DISTRICT. REVIEWED FOR HOWARD COUNTY SOIL CONSERVATION DISTRICT AND MEETS TECHNICAL REQUIREMENTS.

*John R. Roberts* 12/1/99 SOIL CONSERVATION DISTRICT  
 DATE  
*Cheryl Simmons* 12/1/99 U.S. SOIL CONSERVATION DISTRICT  
 DATE

DEPARTMENT OF PUBLIC WORKS  
HOWARD COUNTY, MARYLAND  
*Robert B. Berman* 11-22-99  
CHIEF, BUREAU OF UTILITIES DATE

DEPARTMENT OF PLANNING & ZONING  
HOWARD COUNTY, MARYLAND  
*Robert H. Vogel* 12/1/99  
CHIEF, DEVELOPMENT ENGINEERING DIVISION DATE

**VOGEL & ASSOCIATES**  
ENGINEERS-SURVEYORS-PLANNERS  
3291 Park Avenue, Suite 101 • Elkocott, City, Maryland 21043  
Tel 410.461.5828 Fax 410.465.3966

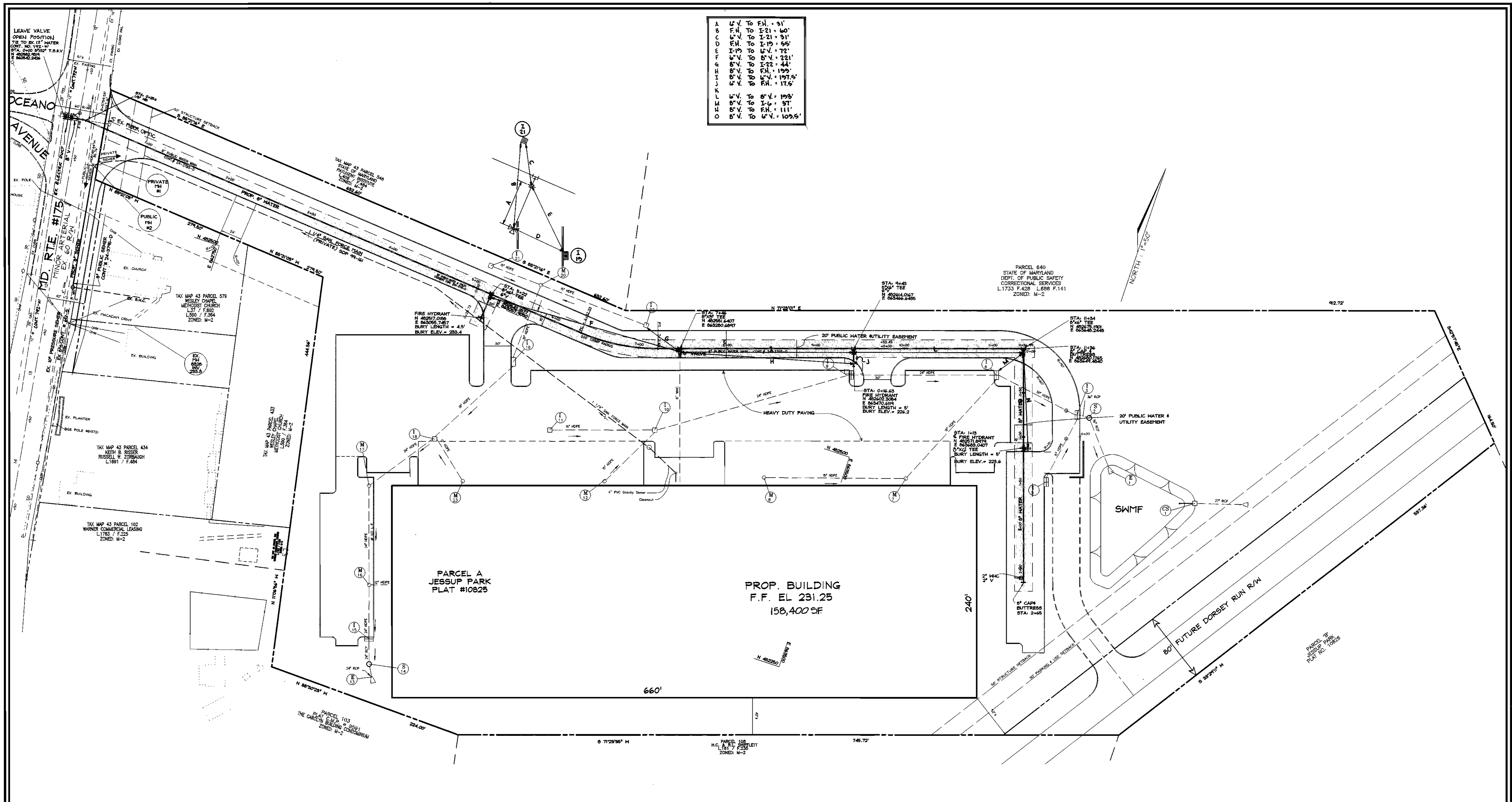


DES: JCO			
DRN: RLP			
CHK: RHV	JMT 2	PER AS-BUILT	10-04-01
DATE: NOV. 1999	JT 1	REVISE WATER LINE TO AVOID ELECTRIC DUCT	8/15/01
	BY NO.	REVISION	DATE

TITLE SHEET  
600' SCALE MAP NO. 43 BLOCK NO. 21

JESSUP PARK  
PARCEL A  
CONTRACT NO. 24-3795-D  
TAX MAP #43 1ST ELECTION DISTRICT  
PARCELS 109, 474, 475, 471, 674 HOWARD COUNTY, MARYLAND

SCALE AS SHOWN  
SHEET 1 OF 3



A	W.V. TO F.H. = 31'
B	F.H. TO I-21 = 60'
C	W.V. TO I-21 = 31'
D	F.H. TO I-19 = 55'
E	I-19 TO W.V. = 72'
F	W.V. TO S.V. = 221'
G	S.V. TO I-22 = 44'
H	S.V. TO F.H. = 199'
I	S.V. TO W.V. = 197.5'
J	W.V. TO F.H. = 17.5'
K	
L	W.V. TO S.V. = 193'
M	S.V. TO I-4 = 37'
N	S.V. TO F.H. = 111'
O	S.V. TO W.V. = 109.5'

PLAN  
SCALE: 1"=50'

SEDIMENT CONTROL MEASURES WILL BE IMPLEMENTED IN ACCORDANCE WITH SECTION 219 OF THE SPECIFICATIONS AND WITH SITE DEVELOPMENT PLAN SDP 99-161

THIS DEVELOPMENT IS APPROVED FOR SOIL EROSION AND SEDIMENT CONTROL BY THE HOWARD COUNTY SOIL CONSERVATION DISTRICT.

*John R. Roberts* 12/1/99  
SOIL CONSERVATION DISTRICT DATE

REVIEWED FOR HOWARD COUNTY SOIL CONSERVATION DISTRICT AND MEETS TECHNICAL REQUIREMENTS.

*Cheryl Simmons* 12/1/99  
SOIL CONSERVATION DISTRICT DATE

DEPARTMENT OF PUBLIC WORKS  
HOWARD COUNTY, MARYLAND

*Robert H. Summers* 11-22-99  
CHIEF, BUREAU OF UTILITIES DATE

DEPARTMENT OF PLANNING & ZONING  
HOWARD COUNTY, MARYLAND

*Cheryl Simmons* 12/1/99  
CHIEF, DEVELOPMENT ENGINEERING DIVISION DATE

**VOGEL & ASSOCIATES**  
ENGINEERS-SURVEYORS-PLANNERS

3591 Park Avenue, Suite 101 • Ellicott City, Maryland 21043  
Tel 410.461.5828 Fax 410.465.3966

*Robert H. Vogel* 11/21/99  
ROBERT H. VOGEL, P.E. NO. 16193



DES:	JCO				
DRN:	RLP				
CHK:	RHV	JMT	2	PER AS-BUILT	10-04-01
		JT	1	REVISE WATER LINE TO AVOID ELECTRIC DUCT	8/15/01
DATE:	NOV. 1999	BY	NO.	REVISION	DATE

WATER AND SEWER PLAN

600' SCALE MAP NO. 43 BLOCK NO. 21

**JESSUP PARK**  
PARCEL 'A'  
CONTRACT 24-3795-D

TAX MAP #43  
1ST TELELECTION DISTRICT

PARCELS 109, 474, 475, 471, 674  
HOWARD COUNTY, MARYLAND


SCALE AS SHOWN

SHEET 2 OF 3



GENERAL NOTES

PART I

- APPROXIMATE LOCATION OF EXISTING MAINS ARE SHOWN. THE CONTRACTOR SHALL TAKE ALL NECESSARY PRECAUTIONS TO PROTECT EXISTING MAINS AND SERVICES AND MAINTAIN UNINTERRUPTED SUPPLY. ANY DAMAGE INCURRED SHALL BE REPAIRED IMMEDIATELY TO THE SATISFACTION OF THE ENGINEER AT THE CONTRACTOR'S EXPENSE.
- ALL HORIZONTAL CONTROLS ARE BASED ON MARYLAND STATE COORDINATES.
- ALL VERTICAL CONTROLS ARE BASED ON U.S.G.S DATA.
- ALL PIPE ELEVATIONS SHOWN ARE INVERT ELEVATIONS.
- CLEAR ALL UTILITIES BY A MINIMUM OF 6". CLEAR ALL POLES BY 2'-0" MINIMUM OR TUNNEL AS REQUIRED. THE OWNER HAS CONTACTED THE UTILITY COMPANIES AND HAS MADE ARRANGEMENTS FOR BRACING OF POLES AS SHOWN ON DRAWINGS. IN THE EVENT THE CONTRACTOR'S WORK REQUIRES THE BRACING OF ADDITIONAL POLES, ANY COST INCURRED BY THE OWNER FOR BRACING OF ADDITIONAL POLES OR DAMAGES SHALL BE DEDUCTED FROM MONEY OWED THE CONTRACTOR. THE CONTRACTOR SHALL COORDINATE WITH THE UTILITY COMPANIES TO SCHEDULE THE BRACING OF THE POLES.
- FOR DETAILS NOT SHOWN ON THE DRAWINGS, AND FOR MATERIALS AND CONSTRUCTION METHODS USE HOWARD COUNTY DESIGN MANUAL, VOLUME IV, STANDARD SPECIFICATIONS AND DETAILS FOR CONSTRUCTION (LATEST EDITION). THE CONTRACTOR SHALL HAVE A COPY OF VOLUME IV ON THE JOB.
- WHERE TEST PITS HAVE BEEN MADE ON EXISTING UTILITIES, THEY ARE NOTED BY THE SYMBOL  AT THE LOCATION OF THE TEST PIT. A NOTE OR NOTES CONTAINING THE RESULTS OF THE TEST PIT OR PITS IS INCLUDED ON THE DRAWINGS. EXISTING UTILITIES IN THE VICINITY OF THE PROPOSED WORK FOR WHICH TEST PITS HAVE NOT BEEN DUG SHALL BE LOCATED BY THE CONTRACTOR TWO WEEKS IN ADVANCE OF CONSTRUCTION.
- THE CONTRACTOR SHALL NOTIFY THE FOLLOWING UTILITY COMPANIES OR AGENCIES AT LEAST FIVE WORKING DAYS BEFORE STARTING WORK SHOWN THESE PLANS:  

C. & P. TELEPHONE	597-8585
A.T. & T.	865-3803
STATE HIGHWAY ADMINISTRATION	531-5533
B.G.E. CO. CONTRACTOR SERVICES	850-4620
B.G.E. CO. UNDER GROUND DAMAGE CONTROL	787-9068
MISSISSIPPI UTILITY	1-800-257-7777
COLONIAL PIPELINE CO.	795-1390
HOWARD COUNTY DEPARTMENT OF PUBLIC WORKS	313-4900
BUREAU OF UTILITIES	
- TREES AND SHRUBS ARE TO BE PROTECTED FROM DAMAGE TO THE MAXIMUM EXTENT. TREES AND SHRUBS LOCATED WITHIN THE CONSTRUCTION STRIP ARE NOT TO BE REMOVED OR DAMAGED BY THE CONTRACTOR.
- THE CONTRACTOR SHALL REMOVE TREES, STUMPS AND ROOTS ALONG LINE OF EXCAVATION. PAYMENT FOR SUCH REMOVAL SHALL BE INCLUDED IN THE UNIT PRICE BID FOR THE CONSTRUCTION OF THE MAIN.
- THE CONTRACTOR SHALL NOTIFY THE BUREAU OF HIGHWAYS, HOWARD COUNTY, AT (410) 313-2450 AT LEAST FIVE WORKING DAYS BEFORE ANY OPEN CUT OR ANY COUNTY ROAD OR BORING/JACKING OPERATION IN COUNTY ROADS FOR LAYING WATER/SEWER MAIN OR HOUSE CONNECTIONS. THE APPROVAL OF THESE DRAWINGS WILL CONSTITUTE COMPLIANCE WITH DPW REQUIREMENTS PER SECTION 10.114(a) OF THE HOWARD COUNTY CODE.

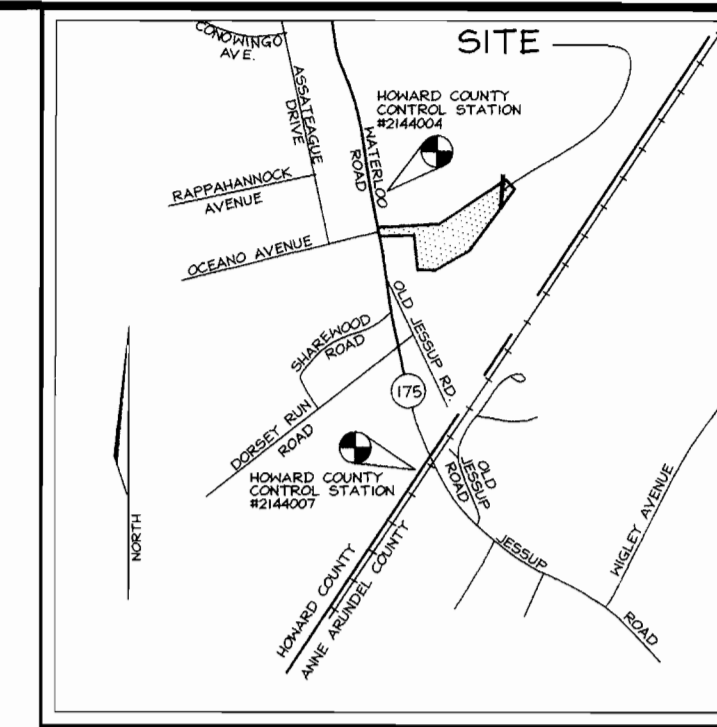
PART II - WATER

- ALL WATER MAINS TO BE D.I.P. CLASS 52 UNLESS OTHERWISE NOTED.
- TOPS OF ALL WATER MAINS TO HAVE A MINIMUM OF 3'-1/2' COVER UNLESS OTHERWISE NOTED.
- VALVES ADJACENT TO TEES SHALL BE STRAPPED TO TEES.
- ALL FITTINGS SHALL BE BUTTRESSED OR ANCHORED WITH CONCRETE IN ACCORDANCE WITH THE STANDARD DETAILS UNLESS OTHERWISE PROVIDED FOR ON THE DRAWINGS.
- FIRE HYDRANTS SHALL BE SET TO THE BURY LINE ELEVATIONS SHOWN ON THE DRAWINGS. ALL FIRE HYDRANTS SHALL BE RESTRAINED AND BUTTRESSED WITH CONCRETE IN ACCORDANCE WITH STANDARD DETAILS. SOIL AROUND FIRE HYDRANT SHALL BE COMPACTED IN ACCORDANCE WITH SECTION 1000 AND 1005 OF THE STANDARD SPECIFICATIONS.
- THE CONTRACTOR SHALL NOT OPERATE ANY WATER MAIN VALVES ON THE EXISTING WATER SYSTEM.
- ALL WATER HOUSE CONNECTIONS SHALL BE FOR INSIDE METER SETTING UNLESS OTHERWISE NOTED ON PLANS OR IN SPECIFICATIONS.

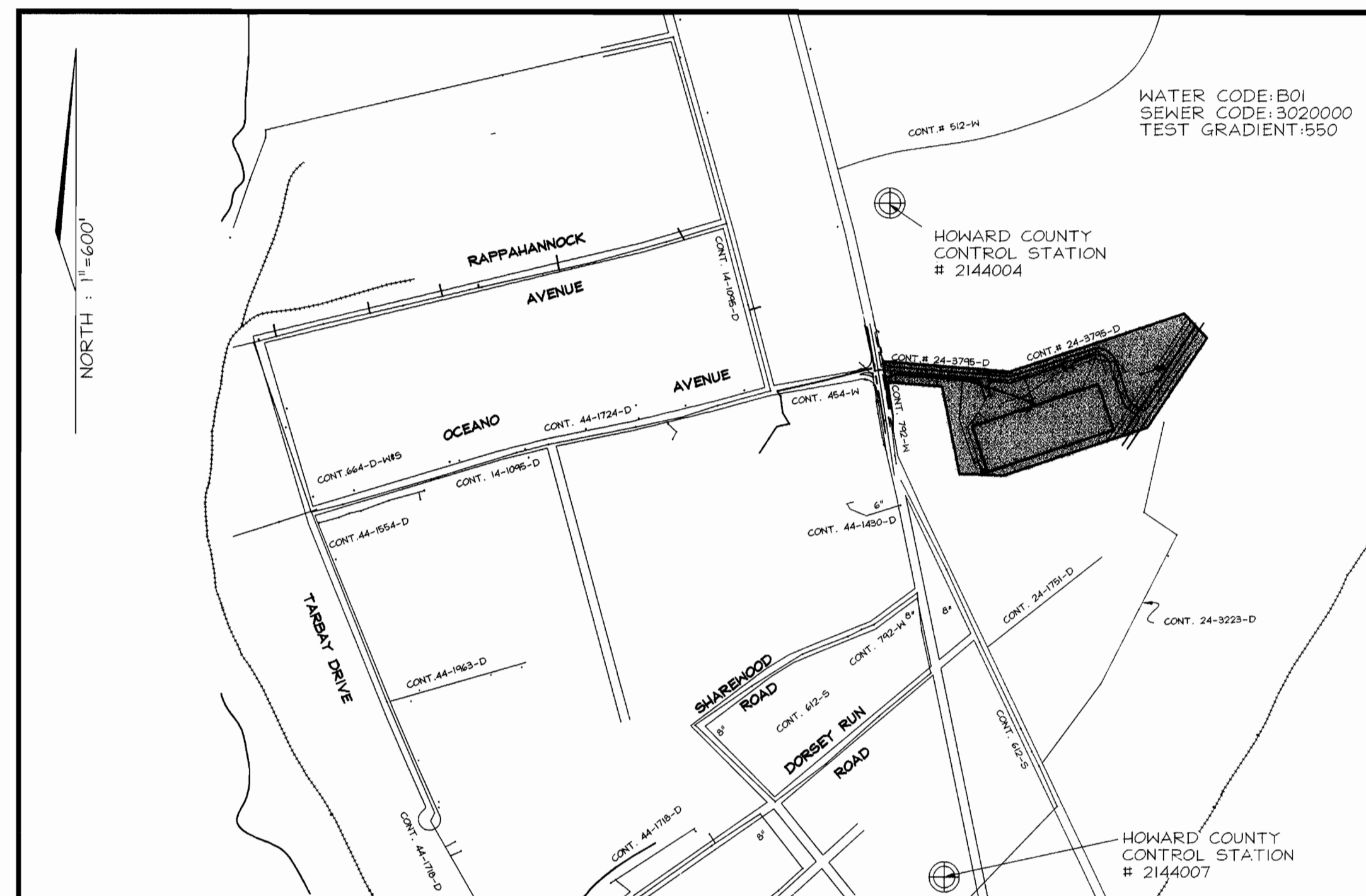
PART III - SEWER

- ALL SEWER MAINS SHALL BE DIP CLASS 52 OR P.V.C. UNLESS OTHERWISE NOTED.
- THE CONTRACTOR SHALL PROVIDE A JOINT IN ALL SEWER MAINS WITHIN 2'-0" OF EXTERIOR MANHOLE WALL.
- ALL MANHOLES SHALL BE 4'-0" INSIDE DIAMETER UNLESS OTHERWISE NOTED.
- MANHOLES SHOWN WITH 12" AND 16" WALLS ARE FOR BRICK MANHOLES ONLY.
- MANHOLES DESIGNATED W.T. IN PLAN AND PROFILE SHALL HAVE WATERTIGHT FRAME AND COVERS, STANDARD DETAIL G5.52. WHERE WATERTIGHT MANHOLE FRAME AND COVER IS USED, SET TOP OF FRAME 18" ABOVE FINISHED GRADE UNLESS OTHERWISE NOTED ON THE DRAWINGS.
- HOUSE(S) WITH THE SYMBOL "C.N.S." INDICATES THAT CELLAR CANNOT BE SERVED.

# JESSUP PARK PUBLIC WATER AND SEWER PLANS HOWARD COUNTY, MARYLAND CONTRACT NO. 24-3795-D



VICINITY MAP  
SCALE: 1"=2000'



LOCATION PLAN  
SCALE: 1"=600'

QUANTITIES				
NAME OF UTILITY CONTRACTOR : TAYLOR CONTRACTING				
SURVEY AND DRAFTING DIVISION AS-BUILT DATE :				
ITEMS	QUANTITIES ESTIMATED	AS-BUILT		
		QUANTITIES	TYPE	MANUFACTURER/SUPPLIER
MANHOLE	1	1		ATLANTIC
8" SEWER	146 LF	146	SDR 35	J-M PIPE
6" VALVE	3	3	GATE VALVE	MUELLER CO.
8" VALVE	4	4	GATE VALVE	" "
8"x6" TEE	4	3	MJ TEE	UNION FOUNDRY
8"x8" TEE	2	2	MJ TEE	" "
FIRE HYDRANT	3	3		MUELLER CO.
8"x12" TAPPING SLEEVE AND 8" CAP & BUTTRESS	1	1	TOP SLEEVE	" "
6" WATER	57	59	D.I.P.	ATLANTIC STATES
8" WATER	1401	1403	D.I.P.	" "

WAREHOUSE	
TYPE OF BUILDING:	1
NO. OF LOTS/PARCELS:	1
NO. OF WATER HOUSE CONNECTIONS:	0
NO. OF SEWER HOUSE CONNECTIONS:	0
DRAINAGE AREA:	LITTLE PATUXENT VIC DORSEY PUMPING STATION
TREATMENT PLANT:	LITTLE PATUXENT RECREATION AND PARK SAVAGE

SEDIMENT CONTROL MEASURES WILL BE IMPLEMENTED IN ACCORDANCE WITH SECTION 219 OF THE SPECIFICATIONS AND WITH SITE DEVELOPMENT PLAN SDP 99-161

THIS DEVELOPMENT IS APPROVED FOR SOIL EROSION AND SEDIMENT CONTROL BY THE HOWARD COUNTY SOIL CONSERVATION DISTRICT.

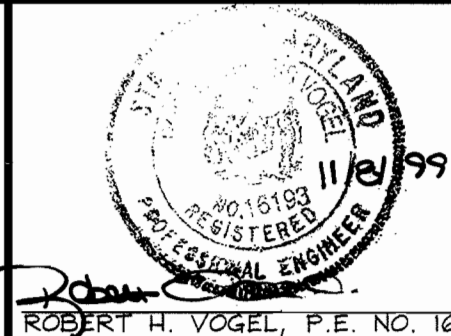
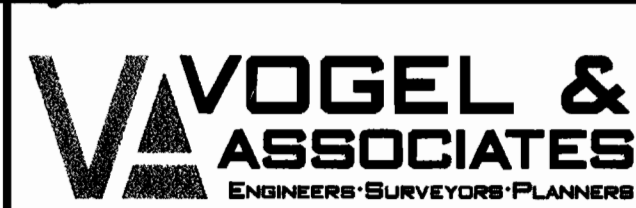
REVIEWED FOR HOWARD COUNTY SOIL CONSERVATION DISTRICT AND MEETS TECHNICAL REQUIREMENTS.

*John R. Polster*  
SOIL CONSERVATION DISTRICT  
DATE: 12/1/99

*Geoff Simmons*  
U.S. SOIL CONSERVATION DISTRICT  
DATE: 12/1/99

DEPARTMENT OF PUBLIC WORKS  
HOWARD COUNTY, MARYLAND

DEPARTMENT OF PLANNING & ZONING  
HOWARD COUNTY, MARYLAND



DES:	JCO			
DRN:	RLP			
CHK:	RHV			
DATE:	NOV. 1999			
BY:	NO.			
		RV 3	EXTEND 20' EASEMENT; DELETE 2' W.H.C.	07-26-04
		JMT 2	PER AS-BUILT	10-04-01
		JT 1	REVISE WATER LINE TO AVOID ELECTRIC DUCT	8/15/01
		BY NO.	REVISION	DATE

TITLE SHEET

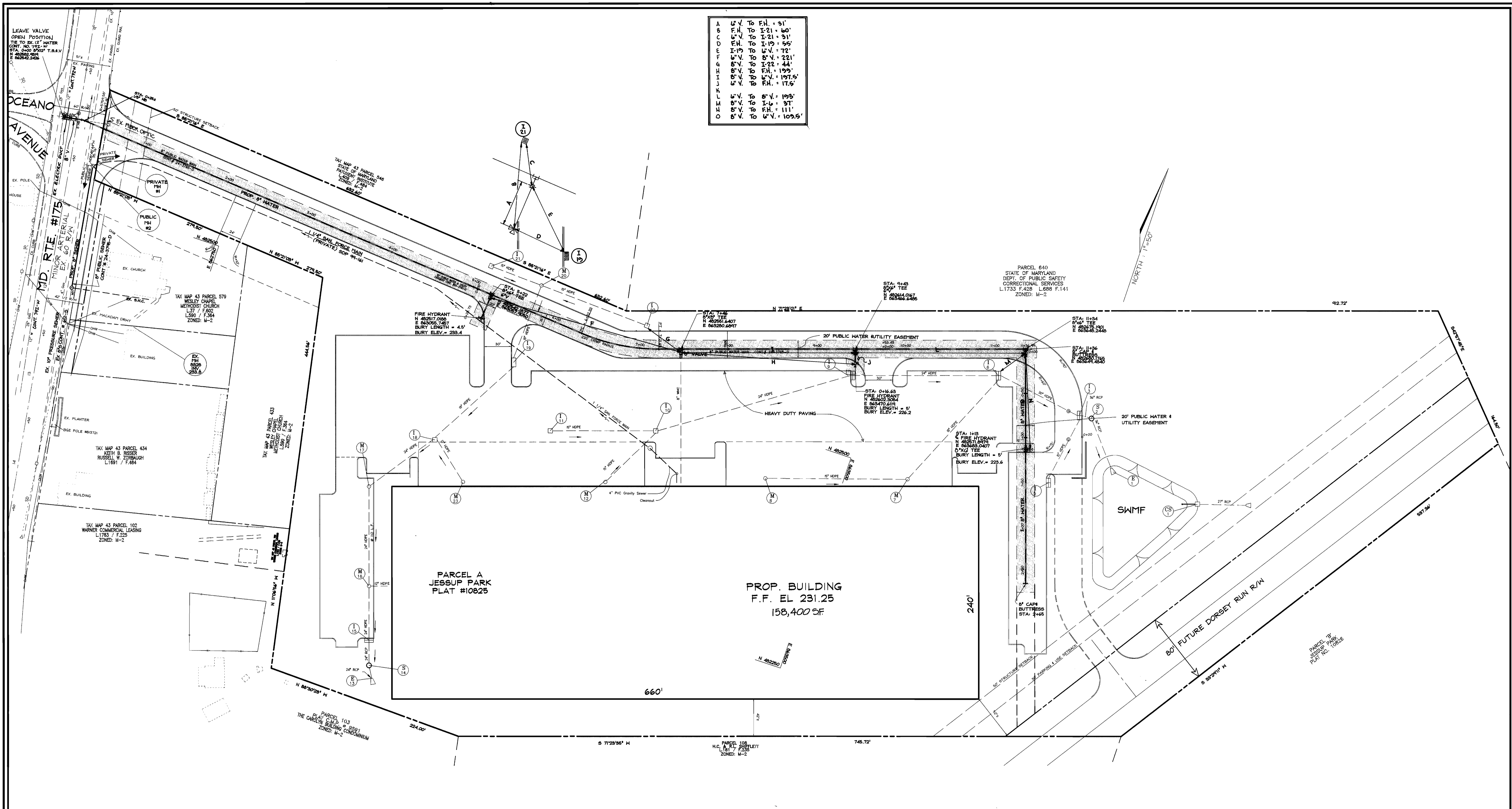
JESSUP PARK  
CONTRACT NO. 24-3795-D

TAX MAP #43  
1ST ELECTION DISTRICT

PARCELS 109, 474, 475, 471, 674  
HOWARD COUNTY, MARYLAND

SCALE AS SHOWN

SHEET 1 OF 3



A	W.V. To F.H. = 91'
B	F.H. To I-21 = 60'
C	W.V. To I-21 = 91'
D	F.H. To I-19 = 56'
E	I-19 To W.V. = 72'
F	W.V. To B.V. = 221'
G	B.V. To I-22 = 44'
H	B.V. To F.H. = 199'
I	B.V. To W.V. = 197.5'
J	W.V. To F.H. = 17.5'
K	
L	W.V. To B.V. = 193'
M	B.V. To I-6 = 37'
N	B.V. To F.H. = 111'
O	B.V. To W.V. = 109.5'

**PLAN**  
SCALE: 1"=50'

SEDIMENT CONTROL MEASURES WILL BE IMPLEMENTED IN ACCORDANCE WITH SECTION 219 OF THE SPECIFICATIONS AND WITH SITE DEVELOPMENT PLAN SDP 99-161

THIS DEVELOPMENT IS APPROVED FOR SOIL EROSION AND SEDIMENT CONTROL BY THE HOWARD COUNTY SOIL CONSERVATION DISTRICT.

REVIEWED FOR HOWARD COUNTY SOIL CONSERVATION DISTRICT AND MEETS TECHNICAL REQUIREMENTS.

*John R. Roberts* 12/1/99 DATE  
SOIL CONSERVATION DISTRICT

*Clayton Simmons* 12/1/99 DATE  
SOIL CONSERVATION DISTRICT

DEPARTMENT OF PUBLIC WORKS  
HOWARD COUNTY, MARYLAND

*Robert J. Sumner* 11-22-99 DATE  
CHIEF, BUREAU OF UTILITIES

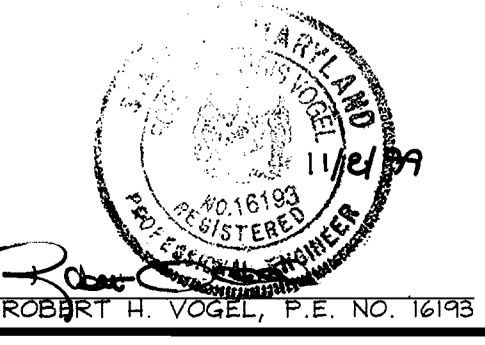
DEPARTMENT OF PLANNING & ZONING  
HOWARD COUNTY, MARYLAND

*William D. Sumner* 12/1/99 DATE  
CHIEF, DEVELOPMENT ENGINEERING DIVISION

**VOGEL & ASSOCIATES**  
ENGINEERS SURVEYORS PLANNERS

3691 Park Avenue, Suite 101 • Elkridge City, Maryland 21043  
Tel 410.461.5828 Fax 410.465.3966

*Robert H. Vogel* 11/21/99  
REGISTERED PROFESSIONAL ENGINEER  
ROBERT H. VOGEL, P.E. NO. 16193



DES:	JCO		
DRN:	RLP		
CHK:	RHV		
DATE:	NOV. 1999		
BY:	NO.	REVISION	DATE
	RV 3	EXTEND 20' EASEMENT; DELETE 2" WHC	07-26-01
	JMT 2	PER AS-BUILT	10-04-01
	JT 1	REVISE WATER LINE TO AVOID ELECTRIC DUCT	8/15/01

**WATER AND SEWER PLAN**

600' SCALE MAP NO. 43 BLOCK NO. 21

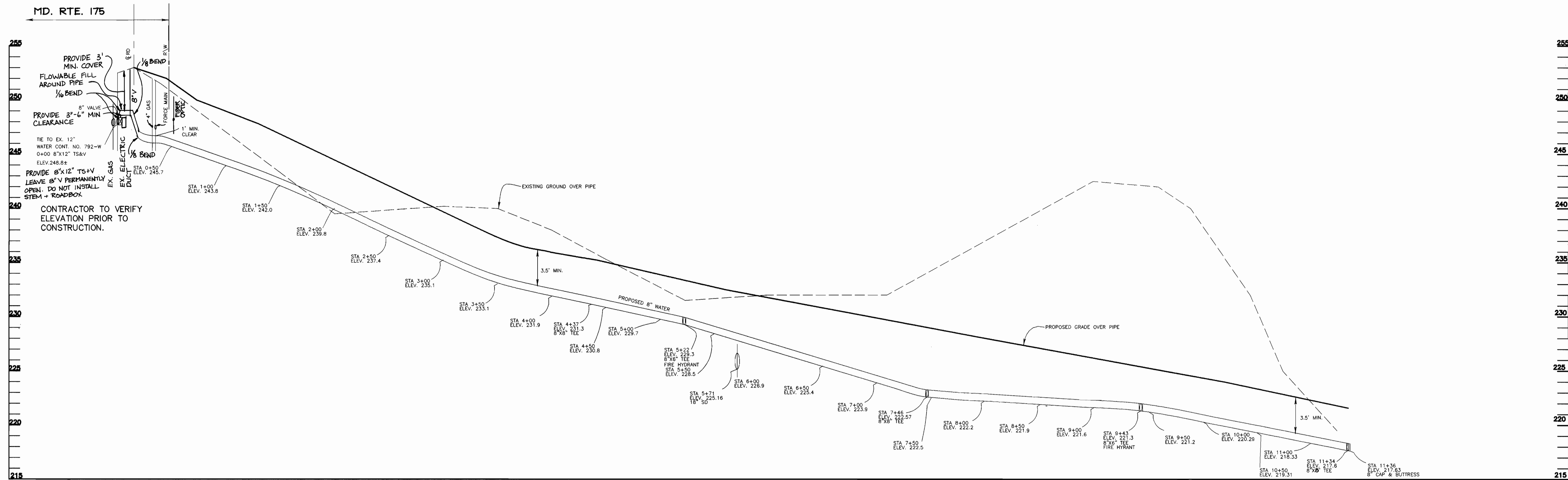
**JESSUP PARK**  
PARCEL 'A'  
CONTRACT 24-3795-D

TAX MAP #43  
1ST TELELECTION DISTRICT

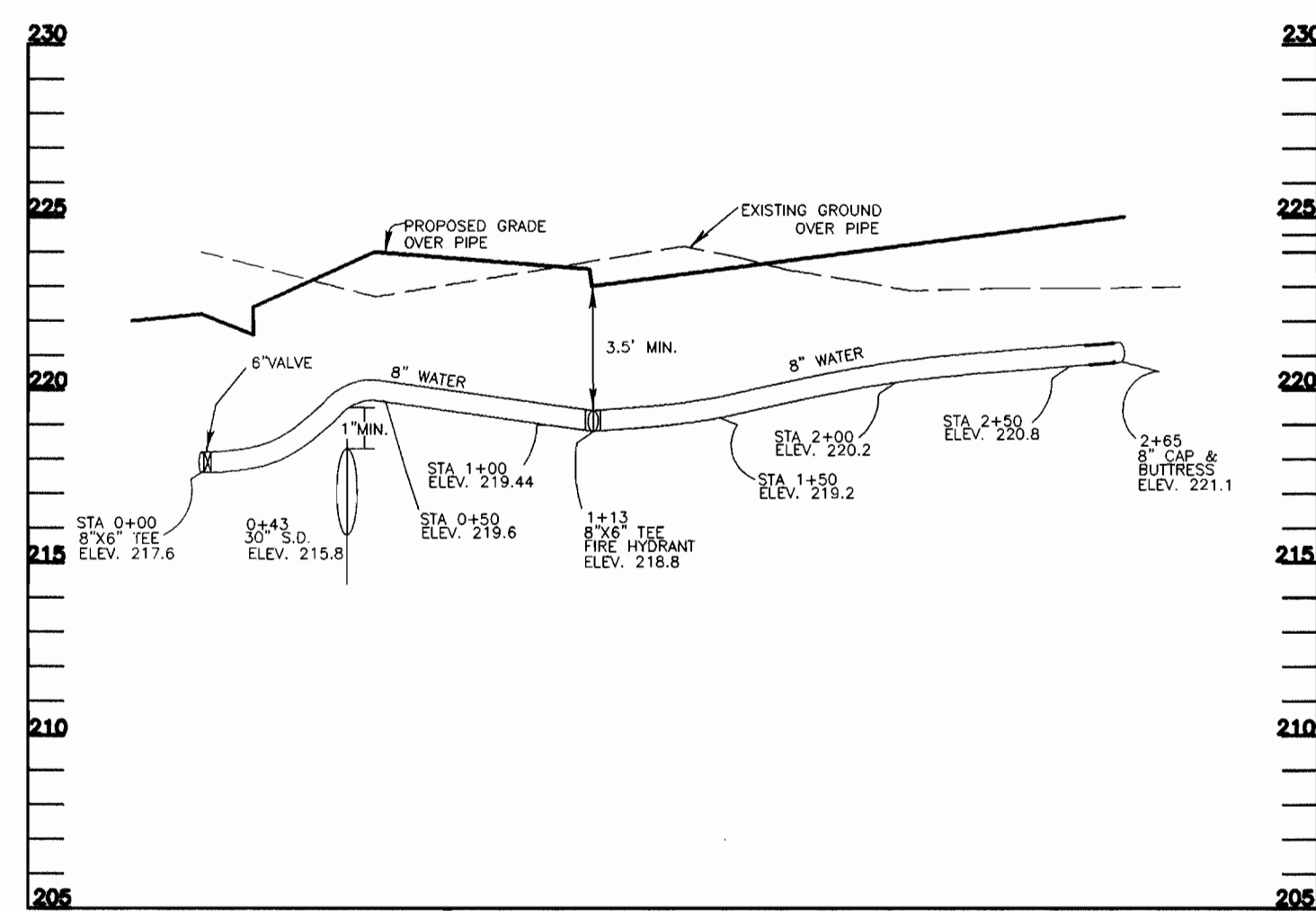
PARCELS 109,474,475,471,674  
HOWARD COUNTY, MARYLAND

SCALE AS SHOWN

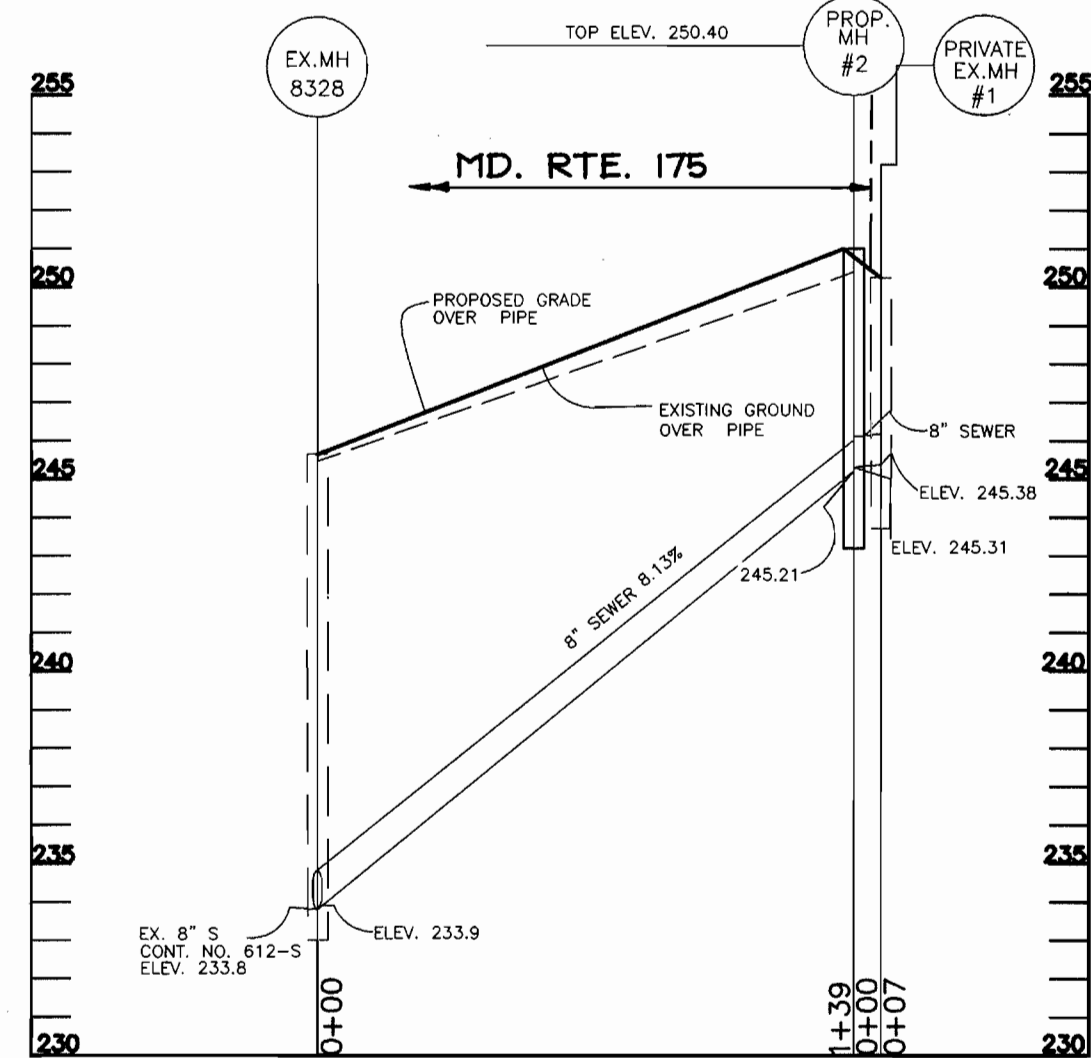
SHEET 2 OF 3



WATER PROFILE  
SCALE: 1" = 50' (HOR.)  
1" = 5' (VER.)



WATER PROFILE  
SCALE: 1" = 50' (HOR.)  
1" = 5' (VER.)



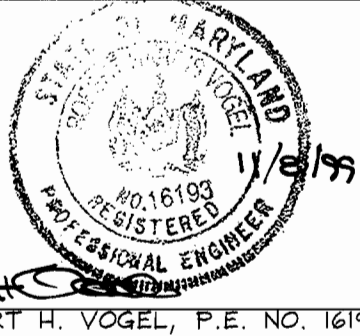
SEWER PROFILE  
SCALE: 1" = 50' (HOR.)  
1" = 5' (VER.)

DEPARTMENT OF PUBLIC WORKS  
HOWARD COUNTY, MARYLAND

DEPARTMENT OF PLANNING & ZONING  
HOWARD COUNTY, MARYLAND

**VOGEL & ASSOCIATES**  
ENGINEERS-SURVEYORS-PLANNERS

3691 Park Avenue, Suite 101 • Ellicott City, Maryland 21043  
Tel 410.461.5828 Fax 410.465.3966



DES: JCO

DRN: RLP

CHK: RHV

DATE: NOV. 1999

RV	3	EXTEND 20' EASEMENT; DELETE 2" WWC	07-26-01
JT	1	REVISE WATER LINE TO AVOID ELECTRIC DUCT	8/15/01
BY NO.		REVISION	DATE

WATER AND SEWER  
PROFILES

JESSUP PARK  
PARCEL 'A'  
CONTRACT 24-3795-D

TAX MAP #43  
1ST. ELECTION DISTRICT

PARCELS 109,474, 475, 471, AND 975  
HOWARD COUNTY, MARYLAND

SCALE  
AS  
SHOWN

SHEET  
3 OF 3