

SHEET INDEX	
NO.	
1	TITLE SHEET
2	PLAN OF WATER MAINS
3	PROFILES OF WATER MAINS

# WATER EXTENSIONS

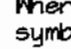
# MEADOWRIDGE BUSINESS CENTER

## 1st ELECTION DISTRICT

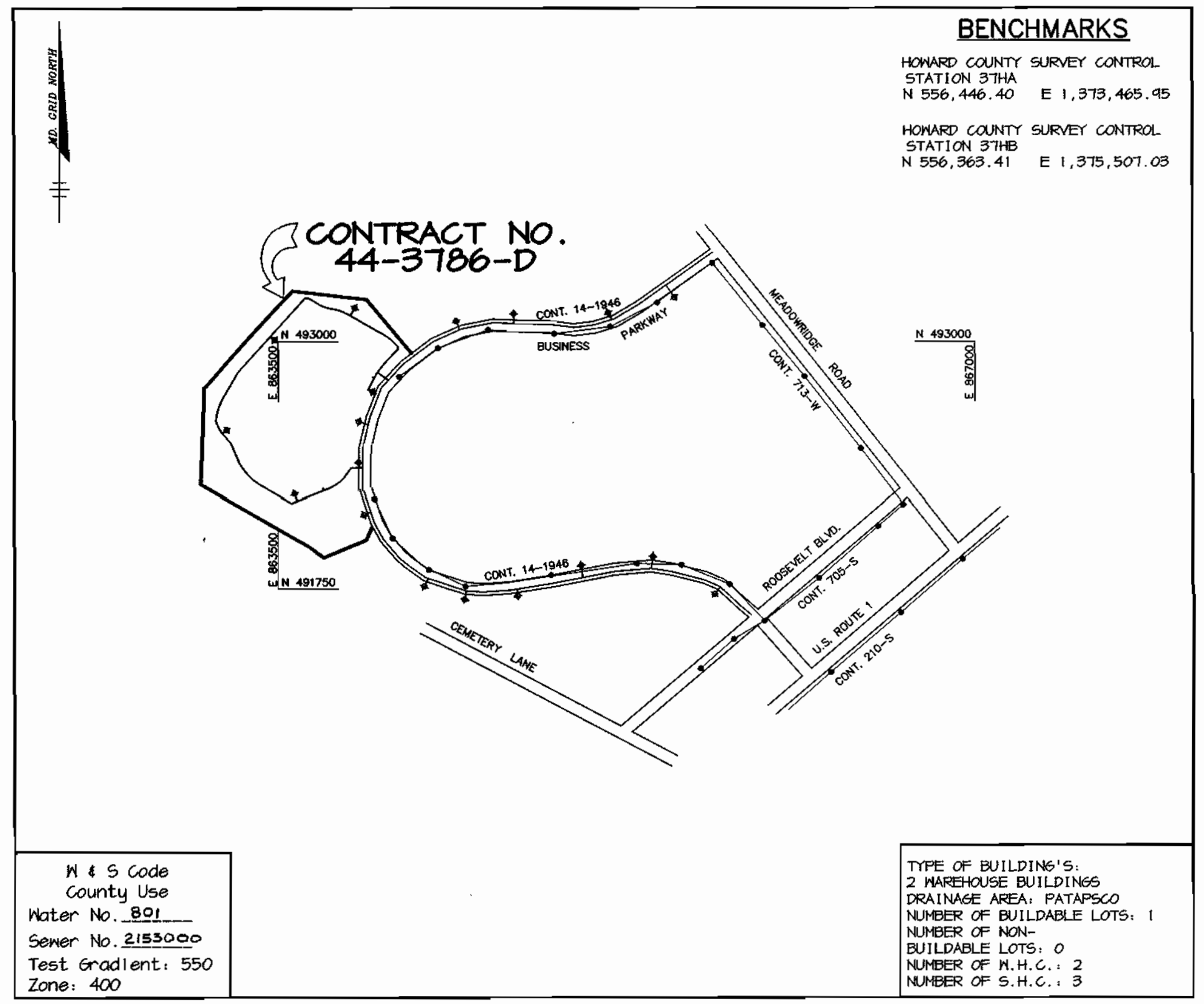
## HOWARD COUNTY, MARYLAND

## CONTRACT NO. 44-3786-D

### GENERAL NOTES

- Approximate location of existing mains are shown. The contractor shall take all necessary precautions to protect existing mains and services and maintain uninterrupted supply. Any damage incurred shall be repaired immediately to the satisfaction of the Engineer at the contractor's expense.
- All horizontal controls are based on Maryland State Coordinates.
- All vertical controls are based on U.S.G.S. data.
- All pipe elevations shown are invert elevations.
- Clear all utilities by a minimum of 6'. Clear all poles by 2'-0" minimum or tunnel as required. The owner has contacted the utility companies and has made arrangements for bracing of poles as shown on the drawings. In the event the contractor's work requires the bracing of additional poles, any cost incurred by the owner for bracing of additional poles or damages shall be deducted from money owed the contractor. The contractor shall coordinate with the utility companies to schedule the bracing of the poles.
- For details not shown on the drawings, and for materials and construction methods use Howard County Design Manual, Volume IV, Standard Specifications and Detail for Construction. (Latest Edition). The contractor shall have a copy of Volume IV on the job.
- Where test pits have been made on existing utilities, they are noted by the symbol  at the location of the test pit. A note or notes containing the results of the test pit or pits is included on the drawings. Existing utilities in the vicinity of the proposed work for which test pits have not been dug shall be located by the contractor two weeks in advance of construction operations at his own expense.
- Contractor shall notify the following utility companies or agencies at least five working days before starting work shown on these plans:
 

State Highway Administration	591-5533
Baltimore Gas & Electric Co. Contractor Services	850-4620
Baltimore Gas & Electric Co. Underground Damage Control	787-9269
Miss Utility	1-800-257-7777
Colonial Pipeline Co.	795-1340
Bureau of Utilities, Howard County Department of Public Works	313-4400
- Trees and shrubs are to be protected from damage to maximum extent. Trees and shrubs located within the construction strip are not to be removed or damaged by the contractor.
- Contractor shall remove trees, stumps and roots along line of excavation. Payment for such removal shall be included in the unit price bid for construction of the main.
- All water mains to be D.I.P. Class 52 unless otherwise noted.
- Top of all water mains to have a minimum of 3'-1/2' cover unless otherwise noted.
- Valves adjacent to trees shall be strapped to trees.
- All fittings shall be buttressed or anchored with concrete in accordance with the Standard Details unless otherwise provided for on the drawings.
- Fire hydrants shall be set to the bury line elevations shown on the drawings. All fire hydrants shall be restrained and buttressed with concrete in accordance with Standard Details. Soil around the fire hydrant shall be compacted in accordance with Section 1000 and 1005 of the Standard Specifications.
- The contractor shall not operate any water main valves on the existing water system.
- All water house connections shall be for inside meter setting unless otherwise noted on plans or in specifications.
- Contractor is solely responsible for construction means, methods, techniques, sequences, procedures, and safety precautions and programs.
- The fire hydrant shall be installed as per standard detail H.1.11.
- Fire hydrants will be located 3' FROM BACK OF CURB unless otherwise noted.
- For sprinkler systems, all townhomes or multi-family dwelling units should have a minimum of 1" connection with a 3/4" meter.
- The contractor shall notify the Bureau of Highways, Howard County, at (410) 313-7450 at least five (5) working days before any open cut of any county road or boring/jacking operation in County roads for laying water/sewer mains or house connections. The approval of these drawings will constitute compliance with DPM requirements per Section 18.11(a) of the Howard County Code.
- Howard County DPM is hereby granted permission to access private lots shown on these plans in order to maintain public water and sewer house connections at the curb stops and/or cleanouts.



QUANTITIES				
ITEMS	QUANTITIES ESTIMATED	AS-BUILT		
		QUANTITIES	TYPE	MANUFACTURER / SUPPLIER
8" WATER	2574 LF			
6" WATER	82 LF			
8" VALVES	3 EA.			
6" VALVES	6 EA.			
2" PVC	15 LF			
8" x 8" T	2 EA.			
8" x 6" T	6 EA.			
8" - 1/8 HB	7 EA.			
8" - 1/16 HB	1 EA.			
FIRE HYDRANTS	6 EA.			
8" - 1/32 VB	1 EA.			
8" WATER VAULT	1 EA.			

NAME OF UTILITY CONTRACTOR:

Sediment control measures for this contract will be implemented in accordance with Section 219 of the Specifications and as shown on SDP-99-168

Review for Howard Soil Conservation District and meets technical requirements.

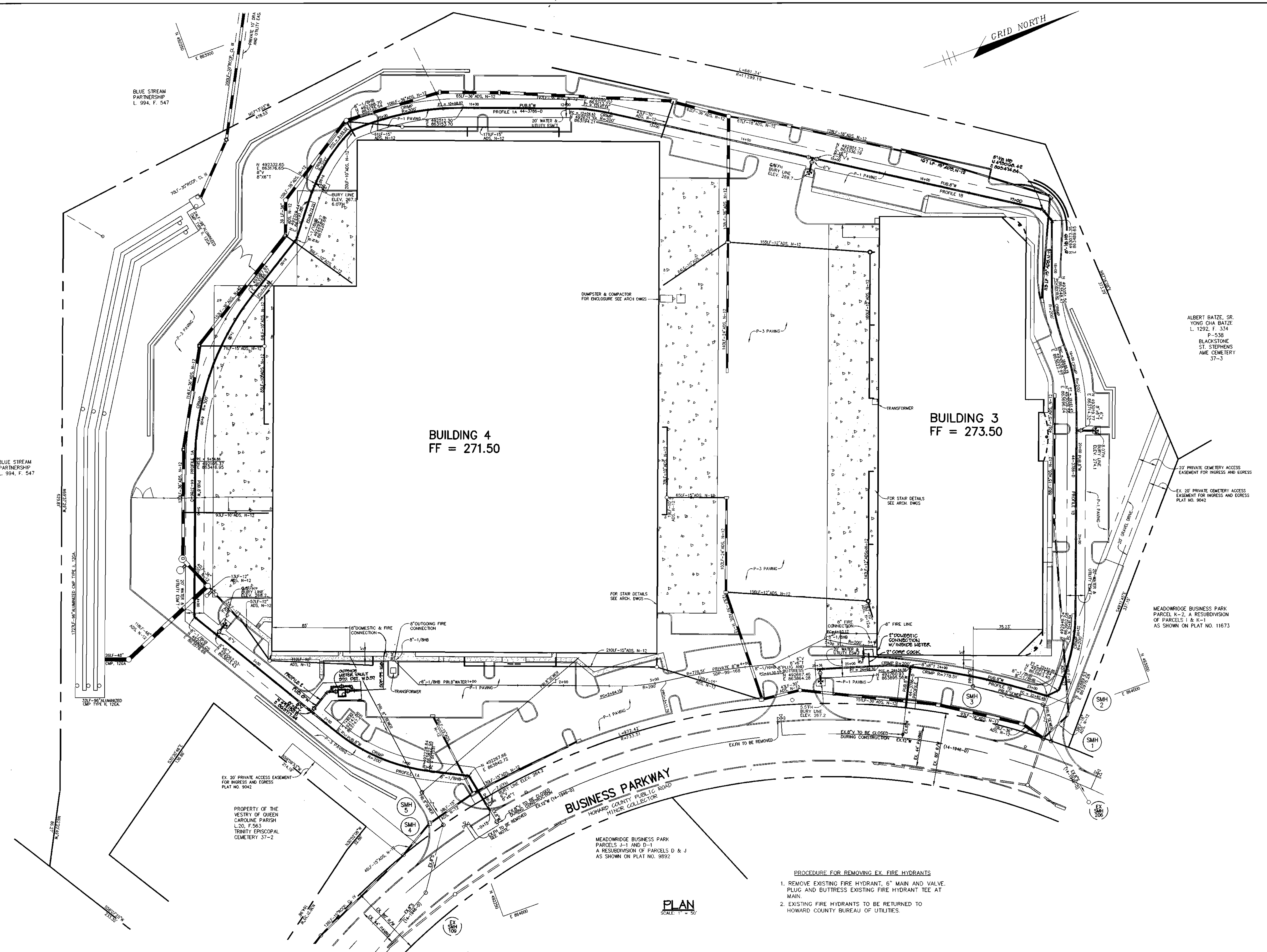
*Cheryl Simon* / 05 / 8/24/99  
NATURAL RESOURCES CONSERVATION SERVICE DATE

This plan is approved for soil erosion and sediment control by the Howard Soil Conservation District.

*Arthur E. Muegge* / 05 / 8/26/99  
HOWARD SOIL CONSERVATION DISTRICT DATE

DEPARTMENT OF PUBLIC WORKS HOWARD COUNTY, MARYLAND <i>R. J. ...</i> 8-23-99 CHIEF, BUREAU OF UTILITIES DATE	DEPARTMENT OF PLANNING & ZONING HOWARD COUNTY, MARYLAND <i>Arthur E. Muegge</i> 8/26/99 CHIEF, DEVELOPMENT ENGINEERING DIVISION DATE	<b>RIEMER MUEGGE &amp; ASSOCIATES, INC.</b> ENGINEERING • ENVIRONMENTAL SERVICES • PLANNING • SURVEYING 8818 Centre Park Drive, Columbia, Maryland 21045 tel 410.997.8900 fax 410.997.9282 97320/PARCEL_G 931.DWG	DES: C.J.R. DRN: DAM CHK: DATE: 07/30/99	BY NO. REVISION DATE	<b>TITLE SHEET</b> MEADOWRIDGE BUSINESS PARK PARCEL G-2 1st ELECTION DISTRICT HOWARD COUNTY, MARYLAND CONTRACT 44-3786-D	SCALE AS SHOWN SHEET 1 OF 3
--	---	---	---	----------------------	---	--------------------------------

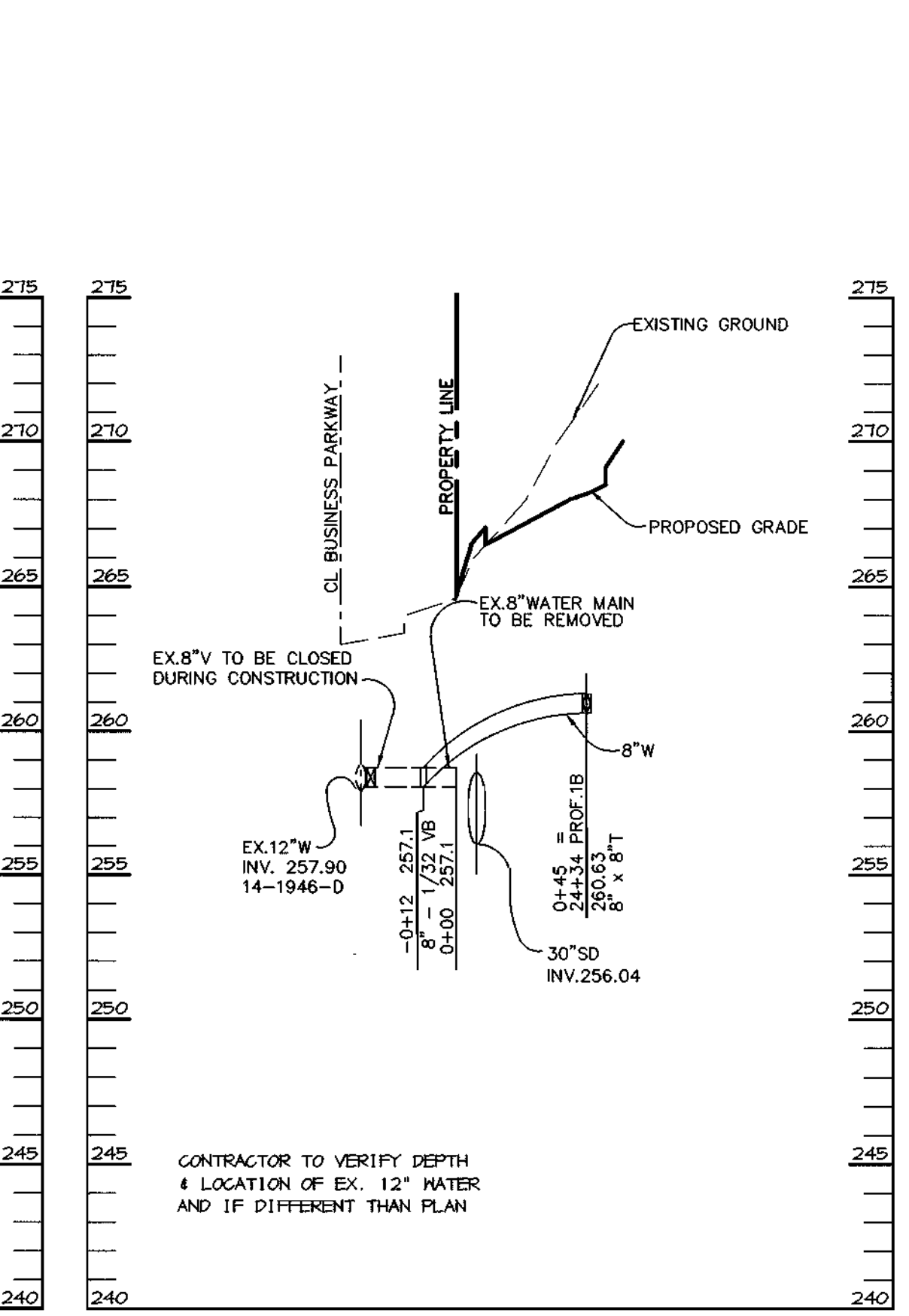
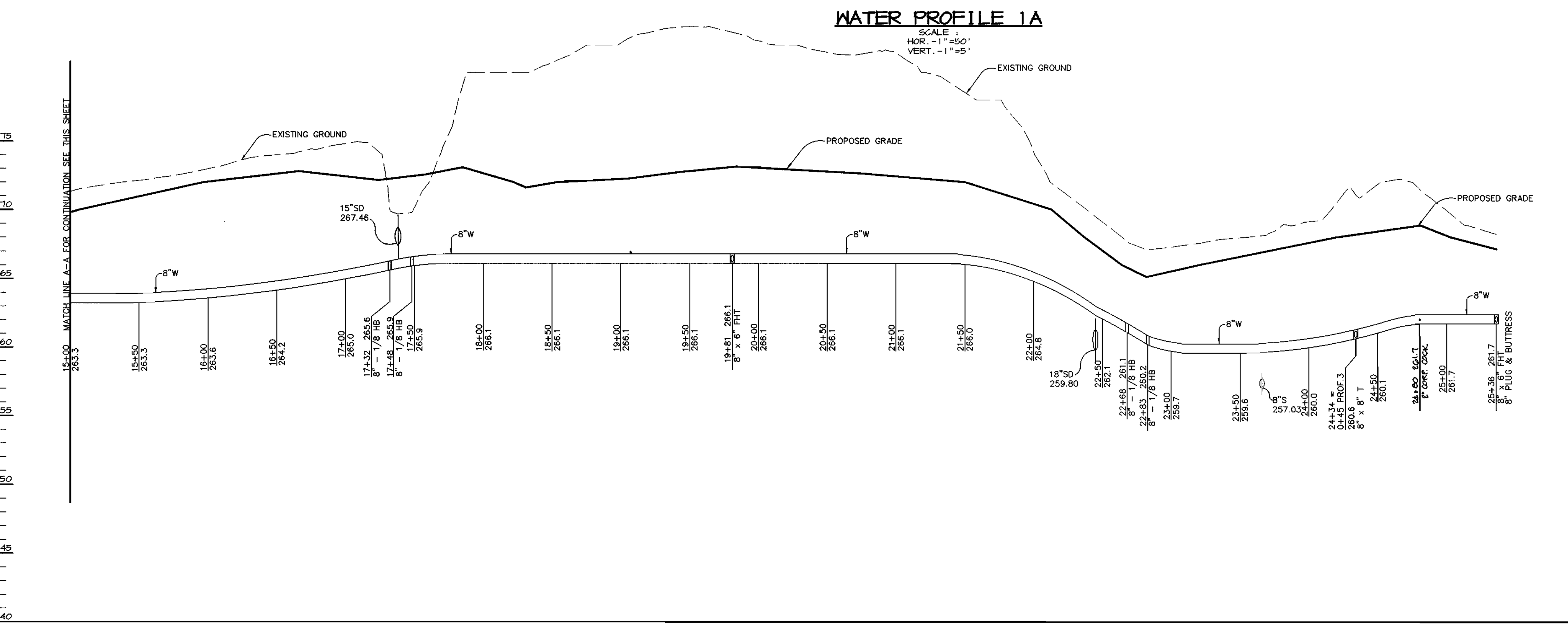
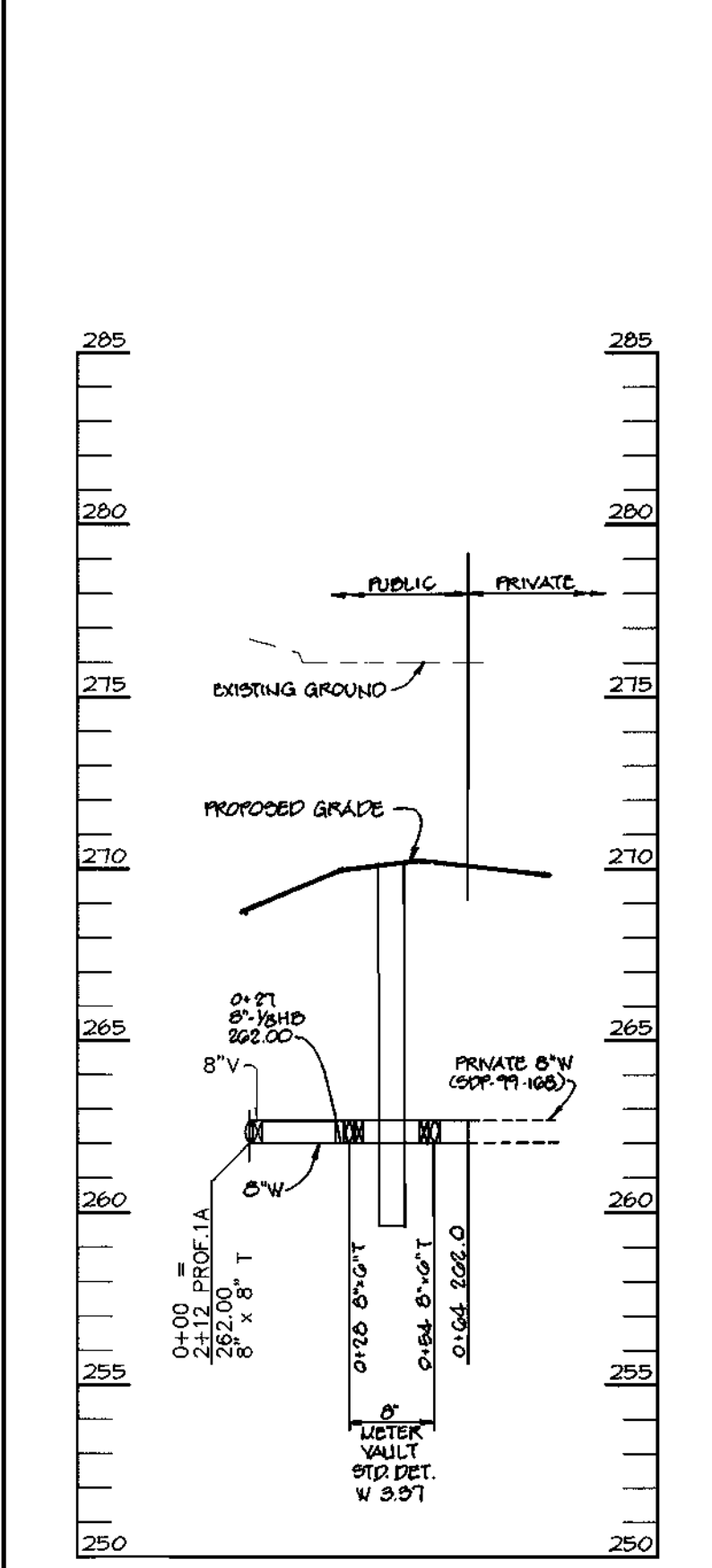
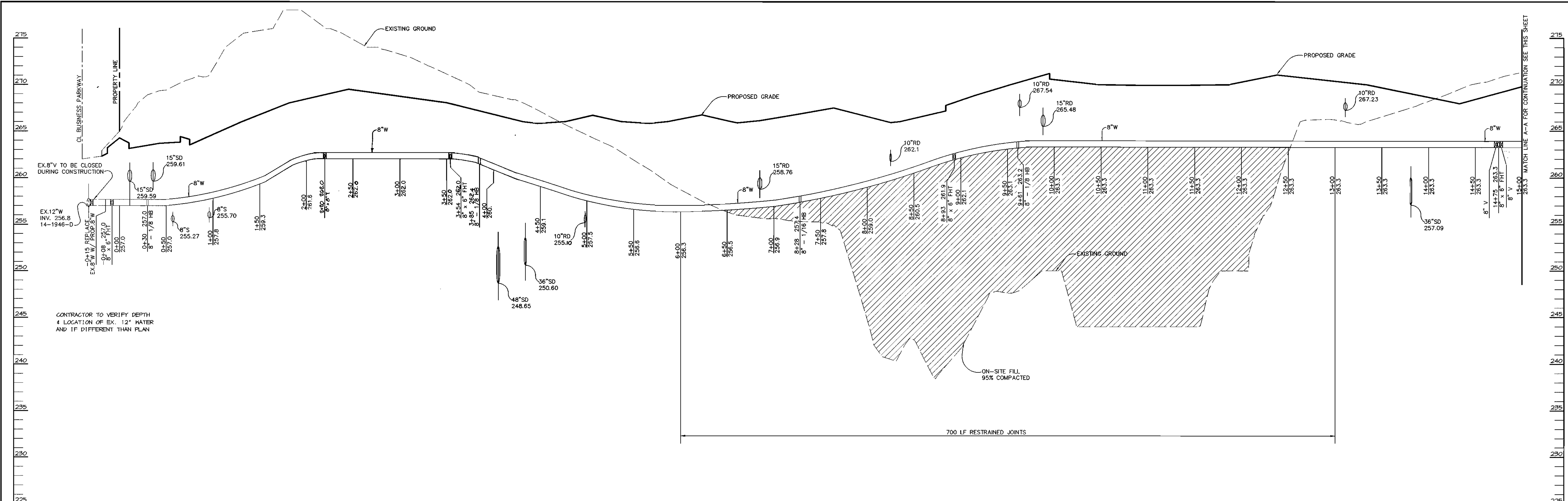
H:\PROJECT\97320\PARCEL\_G\WS1.DWG



- PROCEDURE FOR REMOVING EX. FIRE HYDRANTS
1. REMOVE EXISTING FIRE HYDRANT, 6" MAIN AND VALVE. PLUG AND BUTTRESS EXISTING FIRE HYDRANT TEE AT MAIN.
  2. EXISTING FIRE HYDRANTS TO BE RETURNED TO HOWARD COUNTY BUREAU OF UTILITIES.

DEPARTMENT OF PUBLIC WORKS HOWARD COUNTY, MARYLAND [Signature] CHIEF, BUREAU OF UTILITIES	DEPARTMENT OF PLANNING & ZONING HOWARD COUNTY, MARYLAND [Signature] CHIEF, DEVELOPMENT ENGINEERING DIVISION	RIEMER MUEGGE & ASSOCIATES, INC. ENGINEERING • ENVIRONMENTAL SERVICES • PLANNING • SURVEYING 8818 Centre Park Drive, Columbia, Maryland 21045 tel 410.997.8900 fax 410.997.9252 97389/PARCEL_G WSS.DWG	ARTHUR E. MUEGGE #8707	DES: C.J.R. DRN: DAM CHK: DATE: 07/30/99 BY NO. REVISION DATE	<p style="text-align: center;"><b>PLAN OF WATER MAINS</b></p> 600' SCALE MAP NO. 37 BLOCK NO. 22	<p style="text-align: center;"><b>MEADOWRIDGE BUSINESS PARK</b>          PARCEL G-2          1st ELECTION DISTRICT          HOWARD COUNTY, MARYLAND          CONTRACT 44-3786-D</p> SCALE AS SHOWN SHEET 2 OF 3
--	--	--	------------------------	---	--	--

I:\PROJECT\197320\PARCEL\_G\WSS.DWG Thu Jul 29 17:02:27 1999 RIEMER MUEGGE & ASSOCIATES, INC.



<p>DEPARTMENT OF PUBLIC WORKS HOWARD COUNTY, MARYLAND</p> <p><i>Robert J. ...</i> CHIEF, BUREAU OF UTILITIES</p>	<p>DEPARTMENT OF PLANNING &amp; ZONING HOWARD COUNTY, MARYLAND</p> <p><i>Arthur E. Muegge</i> CHIEF, DEVELOPMENT ENGINEERING DIVISION</p>	<p><b>RIEMER MUEGGE &amp; ASSOCIATES, INC.</b> ENGINEERING • ENVIRONMENTAL SERVICES • PLANNING • SURVEYING 8818 Centre Park Drive, Columbia, Maryland 21045 tel 410.997.8900 fax 410.997.9282 97200/PAID/KEL_G 955.070</p> <p style="text-align: center;">   <b>ARTHUR E. MUEGGE #8707</b> </p>	<p>DES: C.J.R.</p> <p>DRN: DAM</p> <p>CHK:</p> <p>DATE: 07/30/99</p> <p>BY: NO. REVISION DATE</p>	<p><b>PROFILES OF WATER MAINS</b></p> <p>600' SCALE MAP NO. <u>37</u> BLOCK NO. <u>22</u></p>	<p><b>MEADOWRIDGE BUSINESS PARK</b> PARCEL G-2 1st ELECTION DISTRICT HOWARD COUNTY, MARYLAND CONTRACT 44-3786-D</p> <p>SCALE AS SHOWN</p> <p>SHEET <u>3</u> OF <u>3</u></p>
--	---	---	---	---	---

M:\PROJECT\197320\PARCEL\_G\MSS3.DWG F1 Jul 30 09:21:28 1999

SHEET INDEX	
NO.	
1	TITLE SHEET
2	PLAN OF WATER MAINS
3	PROFILES OF WATER MAINS

# WATER EXTENSIONS

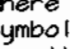
# MEADOWRIDGE BUSINESS CENTER

## 1st ELECTION DISTRICT

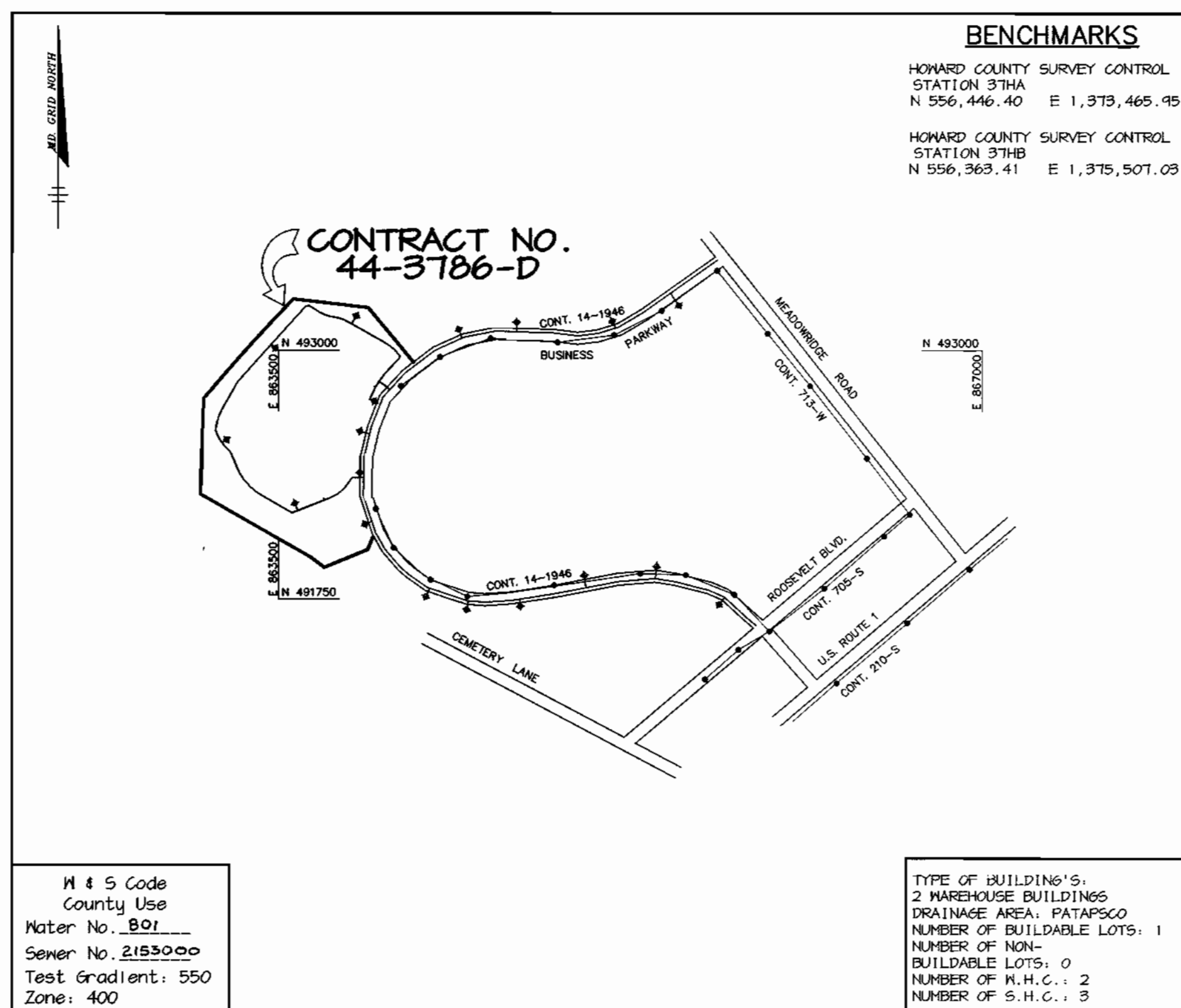
## HOWARD COUNTY, MARYLAND

## CONTRACT NO. 44-3786-D

### GENERAL NOTES

- Approximate location of existing mains are shown. The contractor shall take all necessary precautions to protect existing mains and services and maintain uninterrupted supply. Any damage incurred shall be repaired immediately to the satisfaction of the Engineer at the Contractor's expense.
- All horizontal controls are based on Maryland State Coordinates.
- All vertical controls are based on U.S.G.S. data.
- All pipe elevations shown are invert elevations.
- Clear all utilities by a minimum of 6'. Clear all poles by 2'-0" minimum or tunnel as required. The owner has contacted the utility companies and has made arrangements for bracing of poles as shown on the drawings. In the event the contractor's work requires the bracing of additional poles, any cost incurred by the owner for bracing of additional poles or damages shall be deducted from money owed the contractor. The contractor shall coordinate with the utility companies to schedule the bracing of the poles.
- For details not shown on the drawings, and for materials and construction methods use Howard County Design Manual, Volume IV, Standard Specifications and Detail for Construction (Latest Edition). The contractor shall have a copy of Volume IV on the job.
- Where test pits have been made on existing utilities, they are noted by the symbol  at the location of the test pit. A note or notes containing the results of the test pit or pits is included on the drawings. Existing utilities in the vicinity of the proposed work for which test pits have not been dug shall be located by the contractor two weeks in advance of construction operations at his own expense.
- Contractor shall notify the following utility companies or agencies at least five working days before starting work shown on these plans:
 

State Highway Administration	531-5533
Baltimore Gas & Electric Co. Contractor Services	950-4620
Baltimore Gas & Electric Co. Underground Damage Control	787-9669
Miss Utility	1-800-257-7777
Colonial Pipeline Co.	785-1940
Bureau of Utilities, Howard County Department of Public Works	315-4900
- Trees and shrubs are to be protected from damage to maximum extent. Trees and shrubs located within the construction strip are not to be removed or damaged by the contractor.
- Contractor shall remove trees, stumps and roots along line of excavation. Payment for such removal shall be included in the unit price bid for construction of the main.
- All water mains to be D.I.P. Class 52 unless otherwise noted.
- Tops of all water mains to have a minimum of 3'-1/2' cover unless otherwise noted.
- Valves adjacent to tees shall be strapped to tees.
- All fittings shall be buttressed or anchored with concrete in accordance with the Standard Details in the Specifications.
- Fire hydrants shall be set to the bury line elevations shown on the drawings. All fire hydrants shall be restrained and buttressed with concrete in accordance with Standard Details. Soil around the fire hydrant shall be compacted in accordance with Section 1000 and 1005 of the Standard Specifications.
- The contractor shall not operate any water main valves on the existing water system.
- All water house connections shall be for inside meter setting unless otherwise noted on plans or in specifications.
- Contractor is solely responsible for construction means, methods, techniques, sequences, procedures, and safety precautions and programs.
- The fire hydrant shall be installed as per standard detail H.1.1.1.
- Fire hydrants will be located 3' FROM BACK OF CURB unless otherwise noted.
- For sprinkler systems, all townhomes or multi-family dwelling units should have a minimum of 1" connection with a 3/4" meter.
- The contractor shall notify the Bureau of Highways, Howard County, at (410) 315-7450 at least five (5) working days before any open cut of any county road or boring/jacking operation in County roads for laying water/sewer mains or house connections. The approval of these drawings will constitute compliance with DPM requirements per Section 10.114(a) of the Howard County Code.
- Howard County DPM is hereby granted permission to access private lots shown on these plans in order to maintain public water and sewer house connections at the curb stops and/or cleanouts.



QUANTITIES				
ITEMS	QUANTITIES ESTIMATED	AS-BUILT		
		QUANTITIES	TYPE	MANUFACTURER / SUPPLIER
8" WATER	2539 LF			
6" WATER	82 LF			
8" VALVES	3 EA.			
6" VALVES	6 EA.			
2" N/C	10 LF			
8" x 8" T	2 EA.			
8" x 6" T	6 EA.			
8" - 1/8" HB	7 EA.			
8" - 1/16" HB	1 EA.			
FIRE HYDRANTS	6 EA.			
8" - 1/32" VB	1 EA.			
8" METER VAULT	1 EA.			

NAME OF UTILITY CONTRACTOR:

Sediment control measures for this contract will be implemented in accordance with Section 219 of the Specifications and as shown on SDP-99-168

CHECKBOX	
AS-BUILT DATE	
SURVEY AND DRAFTING DIVISION	

Review for Howard Soil Conservation District and meets technical requirements.

*Cheryl Simon / GS* 8/24/99  
NATURAL RESOURCES CONSERVATION SERVICE DATE

This plan is approved for soil erosion and sediment control by the Howard Soil Conservation District.

*Arthur E. Muegge* 8/26/99  
HOWARD SOIL CONSERVATION DISTRICT DATE

DEPARTMENT OF PUBLIC WORKS  
HOWARD COUNTY, MARYLAND

DEPARTMENT OF PLANNING & ZONING  
HOWARD COUNTY, MARYLAND

**RIEMER MUEGGE & ASSOCIATES, INC.**  
ENGINEERING • ENVIRONMENTAL SERVICES • PLANNING • SURVEYING  
8818 Centre Park Drive, Columbia, Maryland 21045  
tel 410.997.8900 fax 410.997.9282  
97300/PARCEL.G WSI.DWG



DES: C.J.R.

DRN: DAM

CHK:

DATE: 07/30/99

CJR	MODIFIED QUANTITY OF 8" W	41/400
BY	NO.	REVISION
		DATE

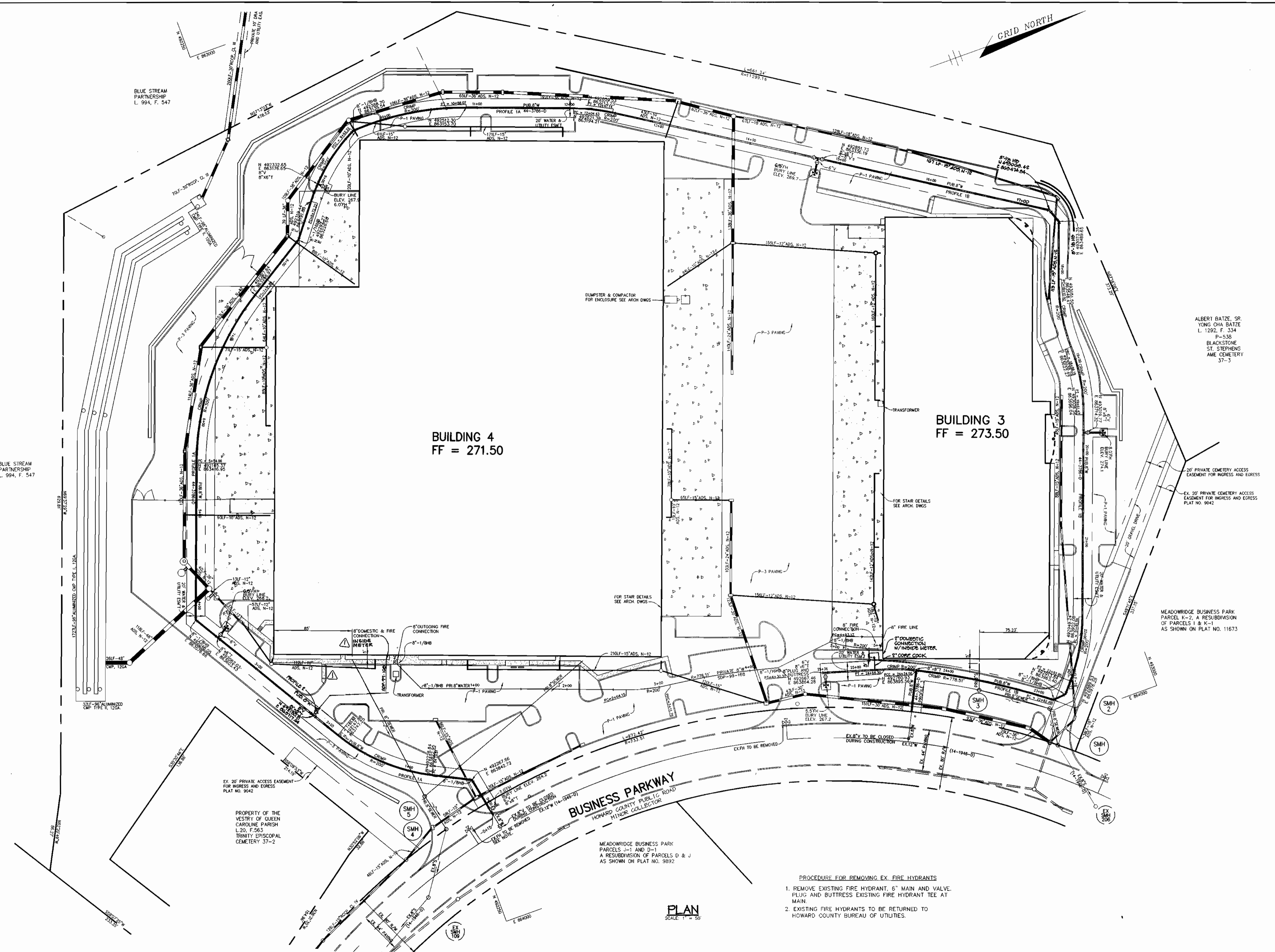
TITLE SHEET

600' SCALE MAP NO. 31 BLOCK NO. 22

MEADOWRIDGE BUSINESS PARK  
PARCEL G-2  
1st ELECTION DISTRICT  
HOWARD COUNTY, MARYLAND  
CONTRACT 44-3786-D

SCALE AS SHOWN

SHEET 1 OF 3



**BUILDING 4**  
FF = 271.50


**BUILDING 3**  
FF = 273.50

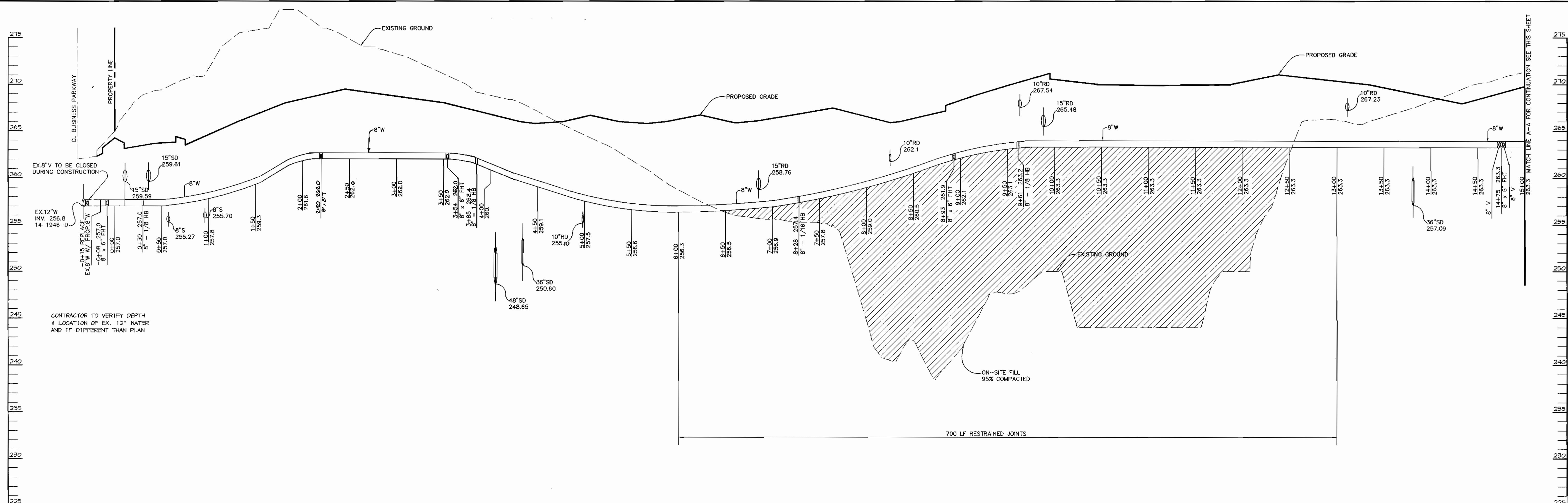
**BUSINESS PARKWAY**  
HOWARD COUNTY PUBLIC ROAD  
MINOR COLLECTOR

**PLAN**  
SCALE: 1" = 50'

- PROCEDURE FOR REMOVING EX. FIRE HYDRANTS
1. REMOVE EXISTING FIRE HYDRANT, 6" MAIN AND VALVE. PLUG AND BUTTRESS EXISTING FIRE HYDRANT TEE AT MAIN.
  2. EXISTING FIRE HYDRANTS TO BE RETURNED TO HOWARD COUNTY BUREAU OF UTILITIES.

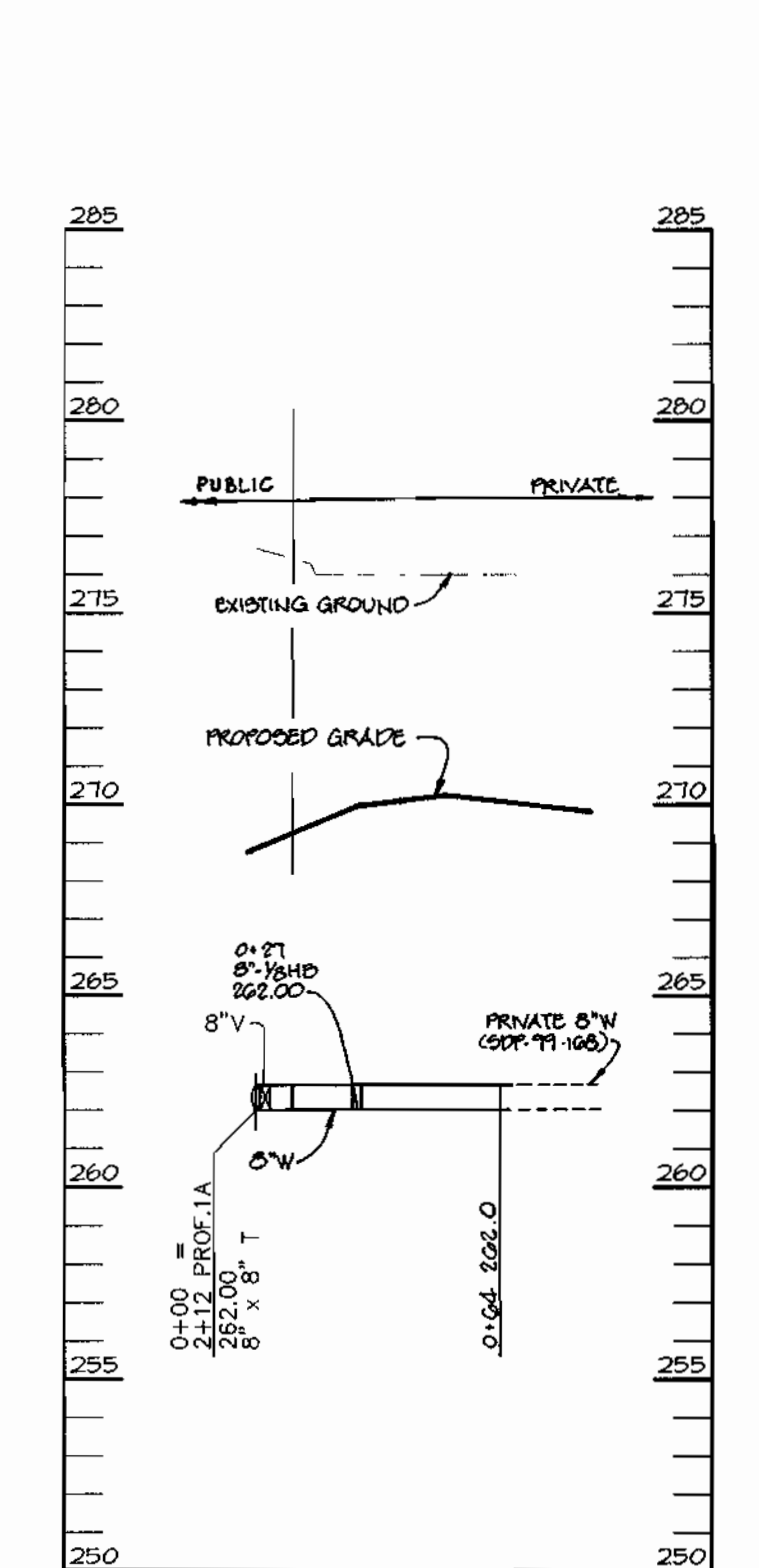
PROJECT: 97320/PARCEL\_G1632.DWG Thu Jul 29 17:02:27 1999 RIEMER MUEGGE & ASSOCIATES, INC.

DEPARTMENT OF PUBLIC WORKS HOWARD COUNTY, MARYLAND  <i>[Signature]</i> CHIEF, BUREAU OF UTILITIES 8-23-99 DATE	DEPARTMENT OF PLANNING & ZONING HOWARD COUNTY, MARYLAND  <i>[Signature]</i> CHIEF, DEVELOPMENT ENGINEERING DIVISION 8/30/99 DATE	<b>RIEMER MUEGGE &amp; ASSOCIATES, INC.</b> ENGINEERING • ENVIRONMENTAL SERVICES • PLANNING • SURVEYING 8818 Centre Park Drive, Columbia, Maryland 21045 Tel 410.997.8900 fax 410.997.9282 97320/PARCEL_G 1632.DWG	 ARTHUR E. MUEGGE #8707	DES: C.J.R. DRN: DAM CHK: DATE: 07/30/99 BY: NO. REVISION DATE	<p style="text-align: center;"><b>PLAN OF WATER MAINS</b></p> <p>DELETED OUTDOOR VAULT, ADDED INSIDE METER-BLDG 4 4/14/00</p> <p>600' SCALE MAP NO. 37 BLOCK NO. 22</p>	<p style="text-align: center;"><b>MEADOWRIDGE BUSINESS PARK</b> PARCEL G-2 1st ELECTION DISTRICT HOWARD COUNTY, MARYLAND CONTRACT 44-3786-D</p> <p style="text-align: right;">SCALE AS SHOWN SHEET 2 OF 3</p>
--	--	--	---	--	---	---



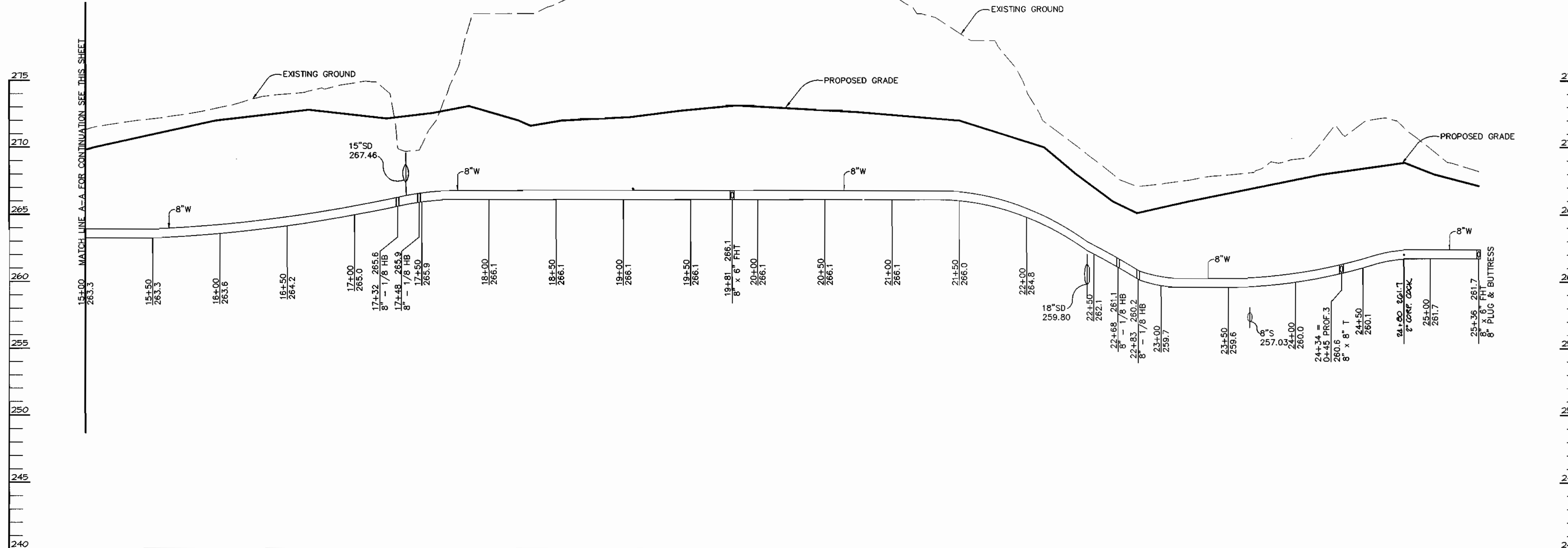
**WATER PROFILE 1A**

SCALE  
HOR. - 1"=50'  
VERT. - 1"=5'



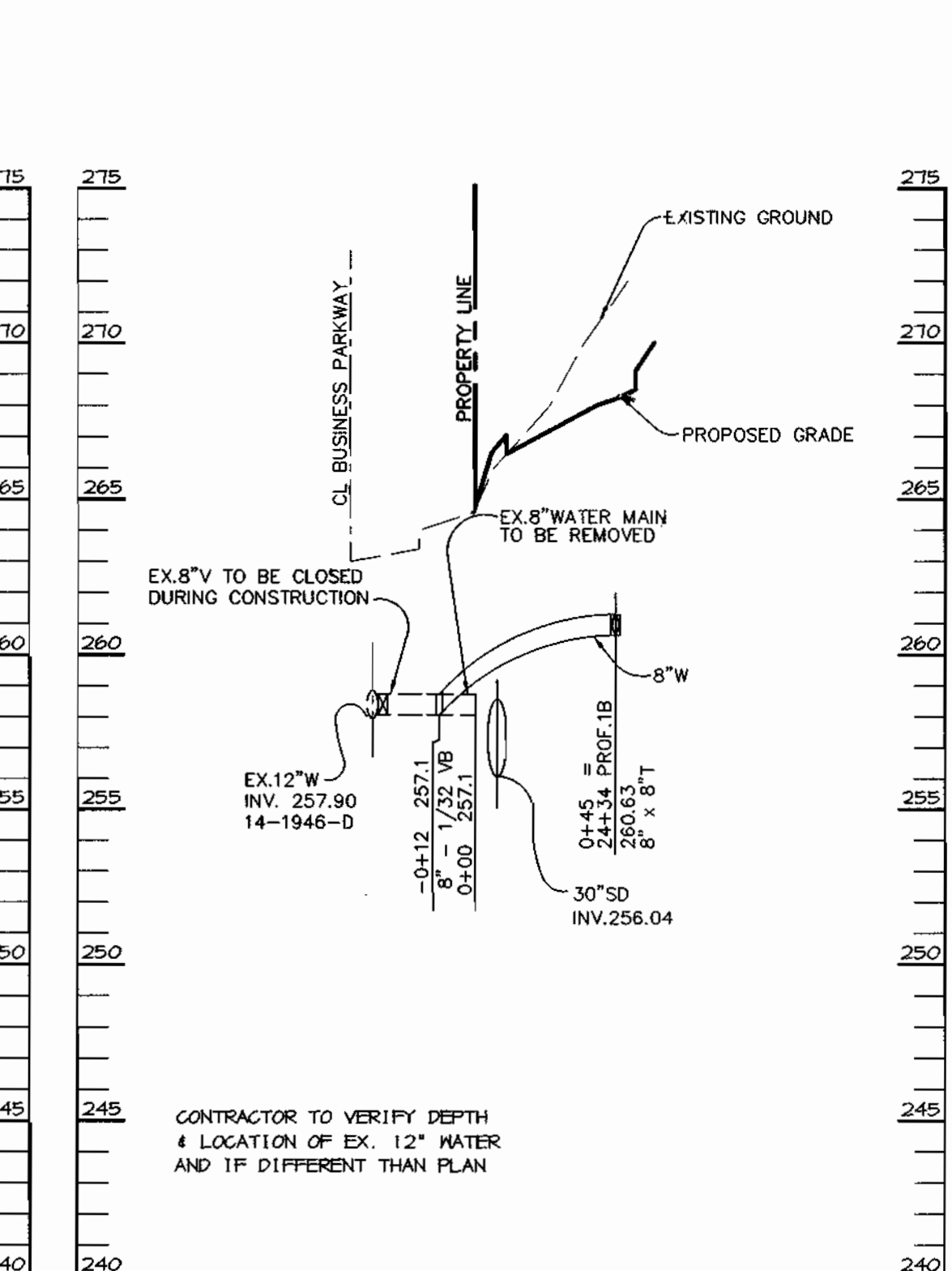
**WATER PROFILE 2**

SCALE  
HOR. - 1"=50'  
VERT. - 1"=5'



**WATER PROFILE 1B**

SCALE  
HOR. - 1"=50'  
VERT. - 1"=5'



**WATER PROFILE 3**

SCALE  
HOR. - 1"=50'  
VERT. - 1"=5'

DEPARTMENT OF PUBLIC WORKS  
HOWARD COUNTY, MARYLAND  
*Robert B. ...*  
CHIEF, BUREAU OF UTILITIES  
8-23-99  
DATE

DEPARTMENT OF PLANNING & ZONING  
HOWARD COUNTY, MARYLAND  
*Chris ...*  
CHIEF, DEVELOPMENT ENGINEERING DIVISION  
8/23/99  
DATE

**RIEMER MUEGGE & ASSOCIATES, INC.**  
ENGINEERING • ENVIRONMENTAL SERVICES • PLANNING • SURVEYING  
8818 Centre Park Drive, Columbia, Maryland 21045  
tel 410.997.8900 fax 410.997.5282  
97255/PARCEN\_G\_WSS.DWG

STATE OF MARYLAND  
ARTHUR E. MUEGGE #8707  
PROFESSIONAL ENGINEER

DES: C.J.R.  
DRN: DAM  
CHK:  
DATE: 07/30/99  
BY: C.J.R.  
NO. 1

MODIFIED WATER PROFILE 2, ELIMINATE METER VAULT  
4/14/00  
REVISION  
DATE

**PROFILES OF WATER MAINS**  
600' SCALE MAP NO. 31 BLOCK NO. 22

**MEADOWRIDGE BUSINESS PARK**  
PARCEL G-2  
1st ELECTION DISTRICT  
HOWARD COUNTY, MARYLAND  
CONTRACT 44-3786-D  
SCALE AS SHOWN  
SHEET 3 OF 3

SHEET INDEX	
NO.	
1	TITLE SHEET
2	PLAN OF WATER MAINS
3	PROFILES OF WATER MAINS

# WATER EXTENSIONS

# MEADOWRIDGE BUSINESS CENTER

## 1st ELECTION DISTRICT

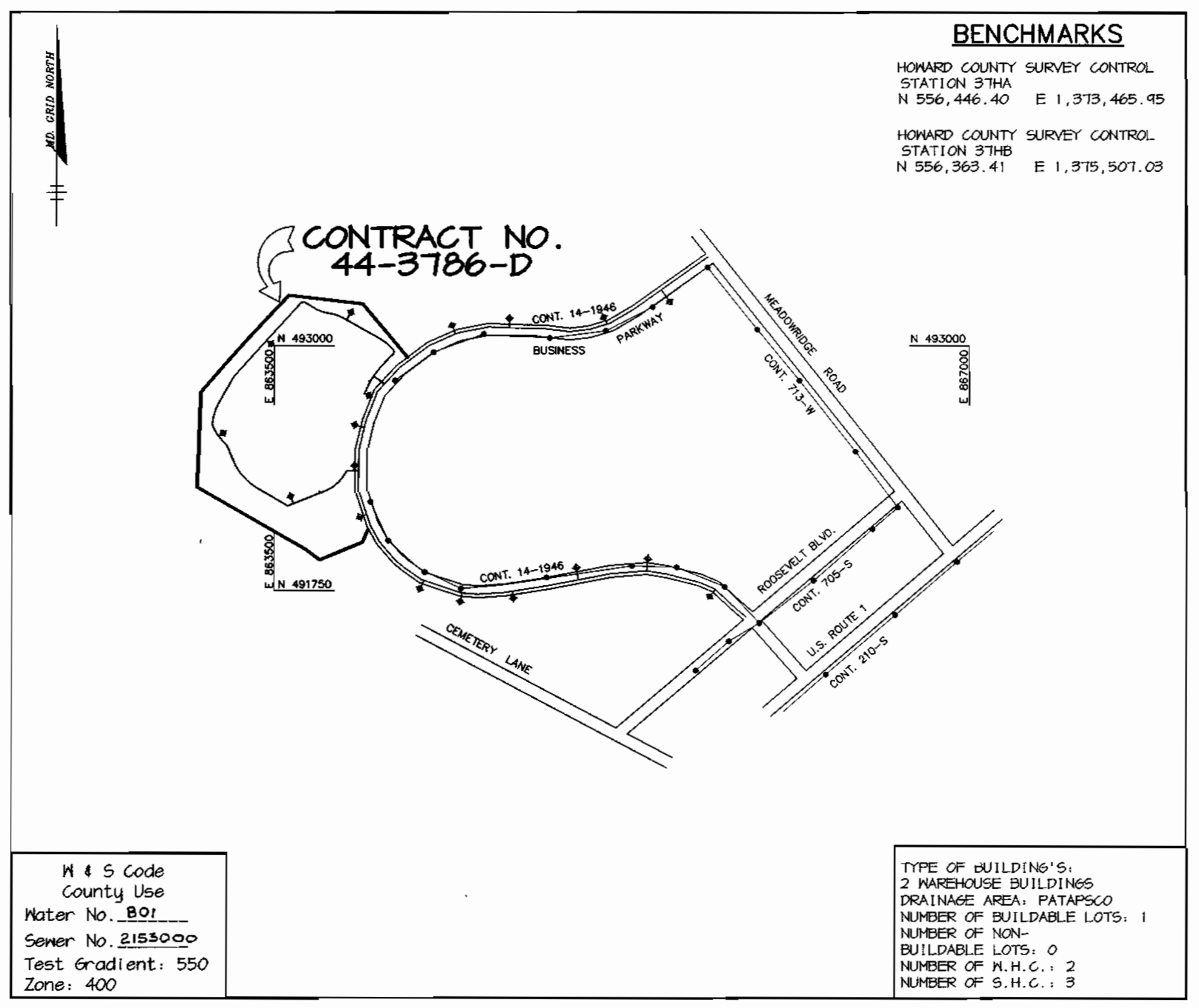
## HOWARD COUNTY, MARYLAND

## CONTRACT NO. 44-3786-D

### GENERAL NOTES

- Approximate location of existing mains are shown. The contractor shall take all necessary precautions to protect existing mains and services and maintain uninterrupted supply. Any damage incurred shall be repaired immediately to the satisfaction of the Engineer at the contractor's expense.
- All horizontal controls are based on Maryland State Coordinates.
- All vertical controls are based on U.S.G.S. data.
- All pipe elevations shown  $\ominus$  are invert elevations.
- Clear all utilities by a minimum of 6'. Clear all poles by 2'-0" minimum or tunnel as required. The owner has contacted the utility companies and has made arrangements for bracing of poles as shown on the drawings. In the event the contractor's work requires the bracing of additional poles, any cost incurred by the owner for bracing of additional poles or damages shall be deducted from money owed the contractor. The contractor shall coordinate with the utility companies to schedule the bracing of the poles.
- For details not shown on the drawings, and for materials and construction methods use Howard County Design Manual, Volume IV, Standard Specifications and Detail for Construction, (Latest Edition). The contractor shall have a copy of Volume IV on the job.
- Where test pits have been made on existing utilities, they are noted by the symbol  $\oplus$  at the location of the test pit. A note or notes containing the results of the test pit or pits is included on the drawings. Existing utilities in the vicinity of the proposed work for which test pits have not been dug shall be located by the contractor two weeks in advance of construction operations at his own expense.
- Contractor shall notify the following utility companies or agencies at least five working days before starting work shown on these plans:
 

State Highway Administration	591-5599
Baltimore Gas & Electric Co. Contractor Services	850-4620
Baltimore Gas & Electric Co. Underground Damage Control	787-4066
Miss Utility	1-800-257-7777
Colonial Pipeline Co.	785-1390
Bureau of Utilities, Howard County Department of Public Works	313-4400
- Trees and shrubs are to be protected from damage to maximum extent. Trees and shrubs located within the construction strip are not to be removed or damaged by the contractor.
- Contractor shall remove trees, stumps and roots along line of excavation. Payment for such removal shall be included in the unit price bid for construction of the main.
- All water mains to be D.I.P. Class 52 unless otherwise noted.
- Tops of all water mains to have a minimum of 3'-1/2' cover unless otherwise noted.
- Valves adjacent to tees shall be strapped to tees.
- All fittings shall be buttressed or anchored with concrete in accordance with the Standard Details unless otherwise provided for on the drawings.
- Fire hydrants shall be set to the bury line elevations shown on the drawings. All fire hydrants shall be restrained and buttressed with concrete in accordance with Standard Details. Soil around the fire hydrant shall be compacted in accordance with Section 1000 and 1005 of the Standard Specifications.
- The contractor shall not operate any water main valves on the existing water system.
- All water house connections shall be for inside meter setting unless otherwise noted on plans or in specifications.
- Contractor is solely responsible for construction means, methods, techniques, sequences, procedures, and safety precautions and programs.
- The fire hydrant shall be installed as per standard detail M.1.11.
- Fire hydrants will be located 3' FROM BACK OF CURB unless otherwise noted.
- For sprinkler systems, all townhomes or multi-family dwelling units should have a minimum of 1" connection with a 3/4" meter.
- The contractor shall notify the Bureau of Highways, Howard County, at (410) 313-7450 at least five (5) working days before any open cut of any County road or boring/jacking operation in County roads for laying water/sewer mains or house connections. The approval of these drawings will constitute compliance with DPM requirements per Section 18.114(a) of the Howard County Code.
- Howard County DPM is hereby granted permission to access private lots shown on these plans in order to maintain public water and sewer house connections at the curb stops and/or cleanouts.



QUANTITIES			
ITEMS	QUANTITIES ESTIMATED	AS-BUILT	
		QUANTITIES	TYPE
8" WATER $\Delta$ # 2530	2539 LF	2530 LF	DIP CLASS 52 ATLANTIC/A-1
6" WATER	82 LF	82 LF	DIP CLASS 52 ATLANTIC/A-1
8" VALVES	3 EA.	3	GATE MUELLER
6" VALVES	6 EA.	6	GATE "
2" NHC	15 LF	15 LF	COPPER "
8" x 8" T	2 EA.	2	O.I.M.-5 "
8" x 6" T	6 EA.	6	AWWA C502 "
8" - 1/8 HB	7 EA.	7	O.I.M.-5 "
8" - 1/16 HB	1 EA.	1	O.I.M.-5 "
FIRE HYDRANTS	6 EA.	6	C 502-85 "
8" - 1/32 VB	1 EA.	1	O.I.M.-5 "
8" METER VAULT	1 EA.	0	DELETED "

NAME OF UTILITY CONTRACTOR: HANERHILL CONTRACTING CO.

Sediment control measures for this contract will be implemented in accordance with Section 219 of the Specifications and as shown on SDP-99-168

Review for Howard Soil Conservation District and meets technical requirements.

Cheryl Simon / GS 8/26/99  
NATURAL RESOURCES CONSERVATION SERVICE DATE

This plan is approved for soil erosion and sediment control by the Howard Soil Conservation District.

Arthur E. Muegge 8/26/99  
HOWARD SOIL CONSERVATION DISTRICT DATE

DEPARTMENT OF PUBLIC WORKS  
HOWARD COUNTY, MARYLAND

DEPARTMENT OF PLANNING & ZONING  
HOWARD COUNTY, MARYLAND

Richard Simon 8-23-99  
CHIEF, BUREAU OF UTILITIES DATE

Arthur E. Muegge 8/30/99  
CHIEF, DEVELOPMENT ENGINEERING DIVISION DATE

**RIEMER MUEGGE & ASSOCIATES, INC.**  
ENGINEERING • ENVIRONMENTAL SERVICES • PLANNING • SURVEYING  
8818 Centre Park Drive, Columbia, Maryland 21045  
Tel 410.997.8900 Fax 410.997.9282  
9700/PARCEL.C WSI.DWG

ARTHUR E. MUEGGE #8707

DES: C.J.R.			
DRN: DAM			
CHK: K&I	-	AS-BUILT CONDITIONS ADDED TO PLAN	6/1/00
DATE: 07/30/99	CJR	MODIFIED QUANTITY OF 8" W	4/14/00
BY NO.		REVISION	DATE

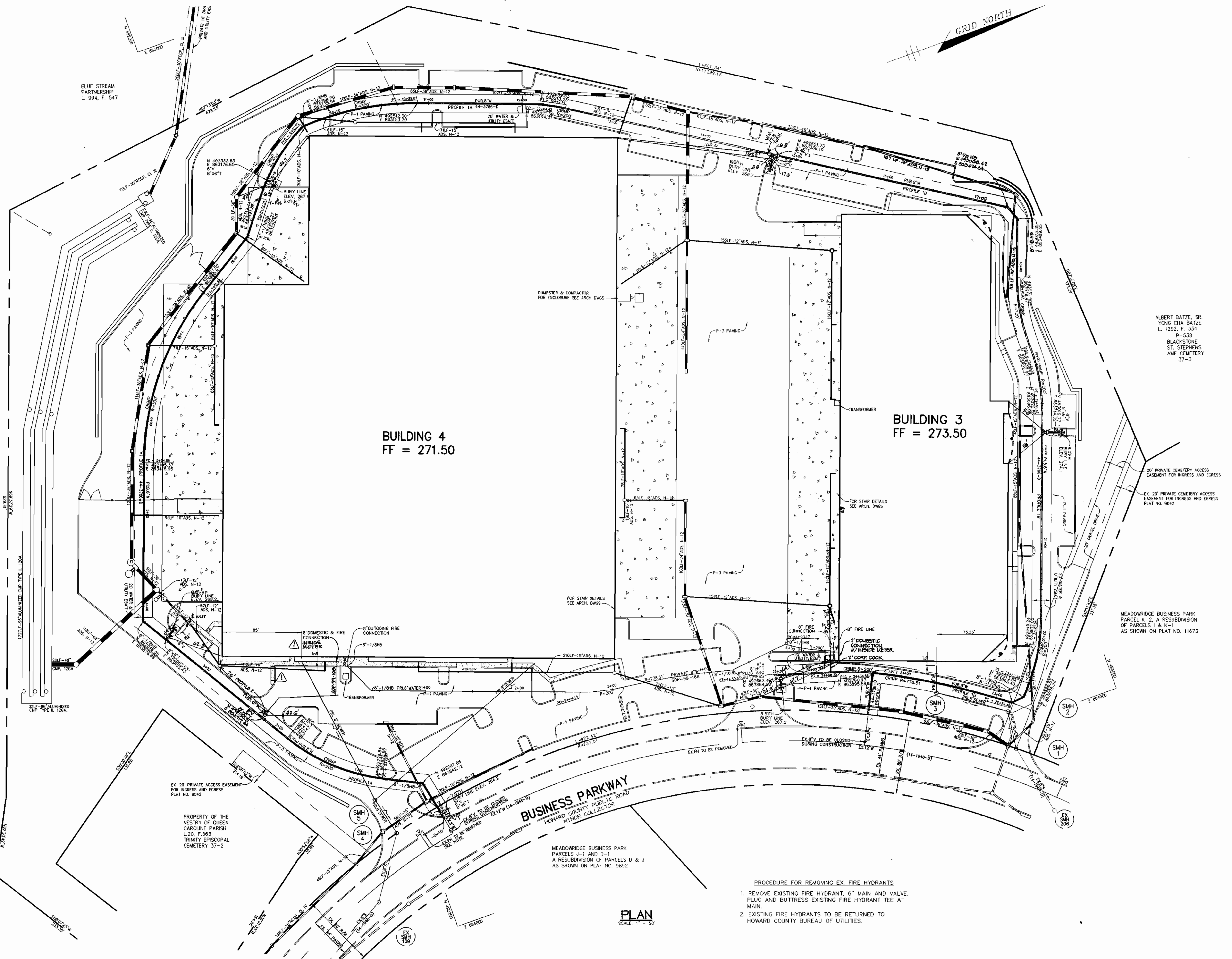
TITLE SHEET

600' SCALE MAP NO. 37 BLOCK NO. 22

MEADOWRIDGE BUSINESS PARK  
PARCEL G-2  
1st ELECTION DISTRICT  
HOWARD COUNTY, MARYLAND  
CONTRACT 44-3786-D

SCALE AS SHOWN

SHEET 1 OF 3



PLAN  
SCALE 1" = 50'

- PROCEDURE FOR REMOVING EX. FIRE HYDRANTS
1. REMOVE EXISTING FIRE HYDRANT, 6" MAIN AND VALVE. PLUG AND BUTTRESS EXISTING FIRE HYDRANT TEE AT MAIN.
  2. EXISTING FIRE HYDRANTS TO BE RETURNED TO HOWARD COUNTY BUREAU OF UTILITIES.

PROJECT: 97320/PARCEL\_G.WMS.DWG Thu Jul 29 17:02:27 1999 RIFWEN MUEGGE & ASSOCIATES, INC.

DEPARTMENT OF PUBLIC WORKS HOWARD COUNTY, MARYLAND Chief, Bureau of Utilities 8-23-99	DEPARTMENT OF PLANNING & ZONING HOWARD COUNTY, MARYLAND Chief, Development Engineering Division 8/30/99	<b>Riemer Muegge &amp; Associates, Inc.</b> ENGINEERING • ENVIRONMENTAL SERVICES • PLANNING • SURVEYING 8818 Centre Park Drive, Columbia, Maryland 21045 tel 410.997.8900 fax 410.997.9282 97320/PARCEL_G.WMS.DWG	ARTHUR E. MUEGGE #8707	DES: C.J.R. DRN: DAM CHK: K.C.I. DATE: 07/30/99	AS-BUILT CONDITIONS ADDED TO PLAN DELETED OUTDOOR VAULT, ADDED INSIDE METER-BLDG 4 BY: C.J.R. NO. 1 REVISION DATE: 4/14/00	600' SCALE MAP NO. 37 BLOCK NO. 22	<b>MEADOWRIDGE BUSINESS PARK</b> PARCEL G-2 1st ELECTION DISTRICT HOWARD COUNTY, MARYLAND CONTRACT 44-3786-D SCALE AS SHOWN SHEET 2 OF 3
--	--	---	------------------------	--	---	------------------------------------	--