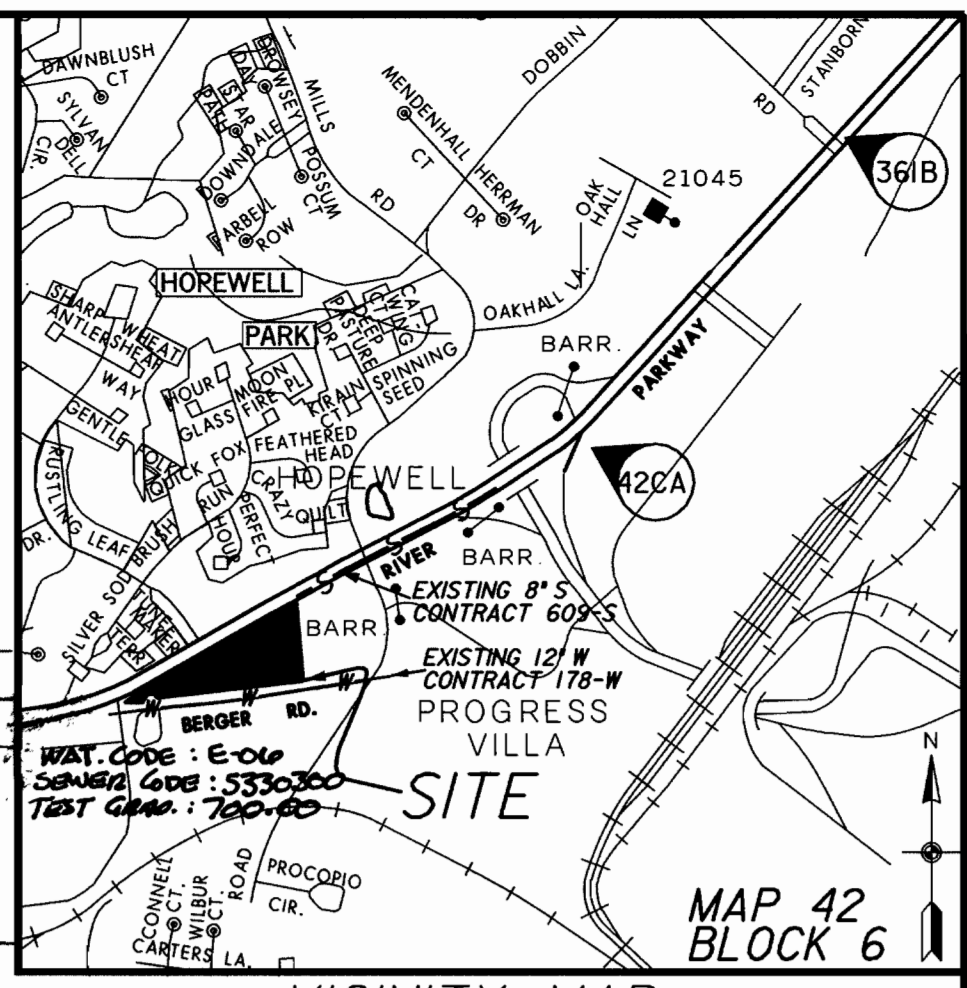


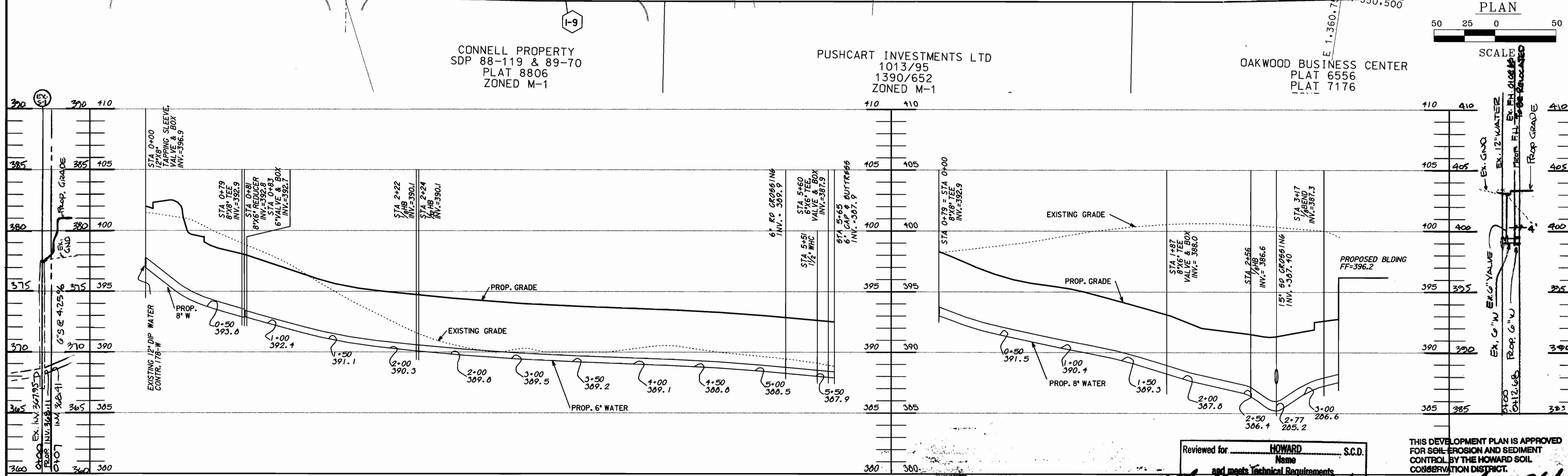
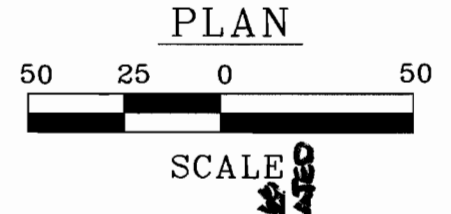
BENCH MARK: HOWARD CO. GEODETIC CONTROL
 STA 42CA NORTH 551695.723
 EAST 1362506.439
 STA 361B NORTH 553348.642
 EAST 1364085.211
 ELEV.=386.337'

PIPE CHART		AS-BUILT	
TYPE	EST QUANTITY	QUANTITY	TYPE
6" DIP	460 LF		
8" DIP	409 LF		
FIRE HYDRANT	2		
RELOCATED FIRE HYDRANT	2		
6" VALVE & BOX	2		
1/2" COPPER	33 LF		



TYPE OF BUILDING: OFFICE/WAREHOUSE
 NO. OF LOTS: 1
 NO. OF HOUSE CONNECTIONS: 1
 NO. OF SEWER HOUSE CONNECTIONS: 1 (EXISTING)
 DRAINAGE AREA:
 TREATMENT PLANT: PATAPSCO
 WATER CODE EOE
 SEWER CODE 5330300

- GENERAL NOTES
 PART I
- APPROXIMATE LOCATION OF EXISTING MAINS ARE SHOWN. THE CONTRACTOR SHALL TAKE ALL NECESSARY PRECAUTIONS TO PROTECT EXISTING MAINS AND SERVICES AND MAINTAIN UNINTERRUPTED SUPPLY. ANY DAMAGE INCURRED SHALL BE REPAIRED IMMEDIATELY TO THE SATISFACTION OF THE ENGINEER AT THE CONTRACTOR'S EXPENSE.
 - ALL HORIZONTAL CONTROLS ARE BASED ON MARYLAND STATE COORDINATES (NORTH AMERICAN DATUM OF 1984 (NAD 83)).
 - ALL VERTICAL CONTROLS ARE BASED ON U.S.G.S. DATA.
 - ALL PIPE ELEVATIONS SHOWN ARE INVERT ELEVATIONS.
 - CLEAR ALL UTILITIES BY A MINIMUM OF 6' CLEAR ALL POLES BY 2'-0" MINIMUM OR TUNNEL AS REQUIRED. THE OWNER HAS CONTACTED THE UTILITY COMPANIES AND HAS MADE ARRANGEMENTS FOR BRACING OF POLES AS SHOWN ON THE DRAWINGS. IN THE EVENT THE CONTRACTOR'S WORK REQUIRES THE BRACING OF ADDITIONAL POLES, ANY COST INCURRED BY THE OWNER FOR BRACING OF ADDITIONAL POLES OR DAMAGES SHALL BE DEDUCTED FROM MONEY OWED TO THE CONTRACTOR. THE CONTRACTOR SHALL COORDINATE WITH THE UTILITY COMPANIES TO SCHEDULE THE BRACING OF THE POLES.
 - FOR DETAILS NOT SHOWN ON THE DRAWINGS, AND FOR MATERIALS AND CONSTRUCTION METHODS USE HOWARD COUNTY DESIGN MANUAL, VOLUME IV, STANDARD SPECIFICATIONS AND DETAIL FOR CONSTRUCTION (LATEST EDITION). THE CONTRACTOR SHALL HAVE A COPY OF VOLUME IV ON THE JOB.
 - WHERE TEST PITS HAVE BEEN MADE ON EXISTING UTILITIES, THEY ARE NOTED BY THE SYMBOL AT THE LOCATION OF THE TEST PIT. A NOTE OR NOTES CONTAINING THE RESULTS OF THE TEST PIT OR PITS IS INCLUDED ON THE DRAWINGS. EXISTING UTILITIES IN THE VICINITY OF THE PROPOSED WORK FOR WHICH TEST PITS HAVE NOT BEEN DUG SHALL BE LOCATED BY THE CONTRACTOR TWO WEEKS IN ADVANCE OF CONSTRUCTION OPERATIONS AT HIS OWN EXPENSE.
 - CONTRACTOR SHALL NOTIFY THE FOLLOWING UTILITY COMPANIES OR AGENCIES AT LEAST FIVE (5) WORKING DAYS BEFORE STARTING WORK SHOWN ON THESE PLANS:
 STATE HIGHWAY ADMINISTRATION (410) 531-5533
 BGE CONTRACTOR SERVICES (410) 850-4620
 BGE UNDER GROUND DAMAGE CONTROL (410) 291-4607
 MISS UTILITY (800) 257-7777
 COLONIAL PIPELINE CO. (410) 549-4120
 HOWARD COUNTY DEPARTMENT OF PUBLIC WORKS, BUREAU OF UTILITIES (410) 313-4900
 BELL ATLANTIC (800) 446-5266
 - TREES AND SHRUBS ARE TO BE PROTECTED FROM DAMAGE TO MAXIMUM EXTENT. TREES AND SHRUBS LOCATED WITHIN THE CONSTRUCTION STRIP ARE NOT TO BE REMOVED OR DAMAGED BY THE CONTRACTOR.
 - CONTRACTOR SHALL REMOVE TREES, STUMPS AND ROOTS ALONG LINE OF EXCAVATION. PAYMENT FOR SUCH REMOVAL SHALL BE INCLUDED IN THE UNIT PRICE BID FOR CONSTRUCTION OF THE MAIN.
 - GENERAL NOTES (SEE ATTACHED).
 - THE CONTRACTOR SHALL NOTIFY THE BUREAU OF HIGHWAYS, HOWARD COUNTY, AT (410) 313-2450 AT LEAST FIVE (5) WORKING DAYS BEFORE ANY OPEN CUT OF ANY COUNTY ROAD OR BORING/JACKING OPERATION IN COUNTY ROADS FOR LAYING WATER/SEWER MAINS OR HOUSE CONNECTIONS. THE APPROVAL OF THESE DRAWINGS WILL CONSTITUTE COMPLIANCE WITH OPW REQUIREMENTS PER SECTION 18.11(a) OF THE HOWARD COUNTY CODE.



WATER PROFILES
 SCALE 1"=50'H, 1"=5'V

Reviewed for: HOWARD S.C.D.
 Name: [Signature]
 Date: 8/14/99
 USDA, NATURAL RESOURCES CONSV. SERVICE

THIS DEVELOPMENT PLAN IS APPROVED FOR SOIL EROSION AND SEDIMENT CONTROL BY THE HOWARD SOIL CONSERVATION DISTRICT.

WATER CODE E-06
 SEWER CODE 5330300
 VILLAGE OF OWEN BROWN
 SECTION 2/ AREA 3
 CONTRACT 44-3784-D
 COLUMBIA TECH CENTER
 VILLAGE OF OWEN BROWN
 SECTION 2, AREA 3
 BERGER ROAD

APPROVED: DEPARTMENT OF PUBLIC WORKS
 HOWARD COUNTY, MARYLAND
 Robert R. Bunn 8-26-99
 CHIEF, BUREAU OF UTILITIES

APPROVED: DEPARTMENT OF PLANNING AND ZONING
 HOWARD COUNTY, MARYLAND
 [Signature] 8/27/99
 CHIEF, DEVELOPMENT ENGINEERING DIVISION

PURDUM and JESCHKE, LLC
 Consulting Engineers and Land Surveyors Civil - Structural - Environmental
 The Professional Engineering Center
 8005 Harford Road - Baltimore, Maryland 21234
 Phone: 410-668-8800 - Fax: 410-668-8801



DESIGNED BY:	PCR		
DRAWN BY:	JLP		
CHECKED BY:	PCR		
DATE:	7/13/99		
BY	NO.	REVISION	DATE

PLAN & PROFILE SHEET

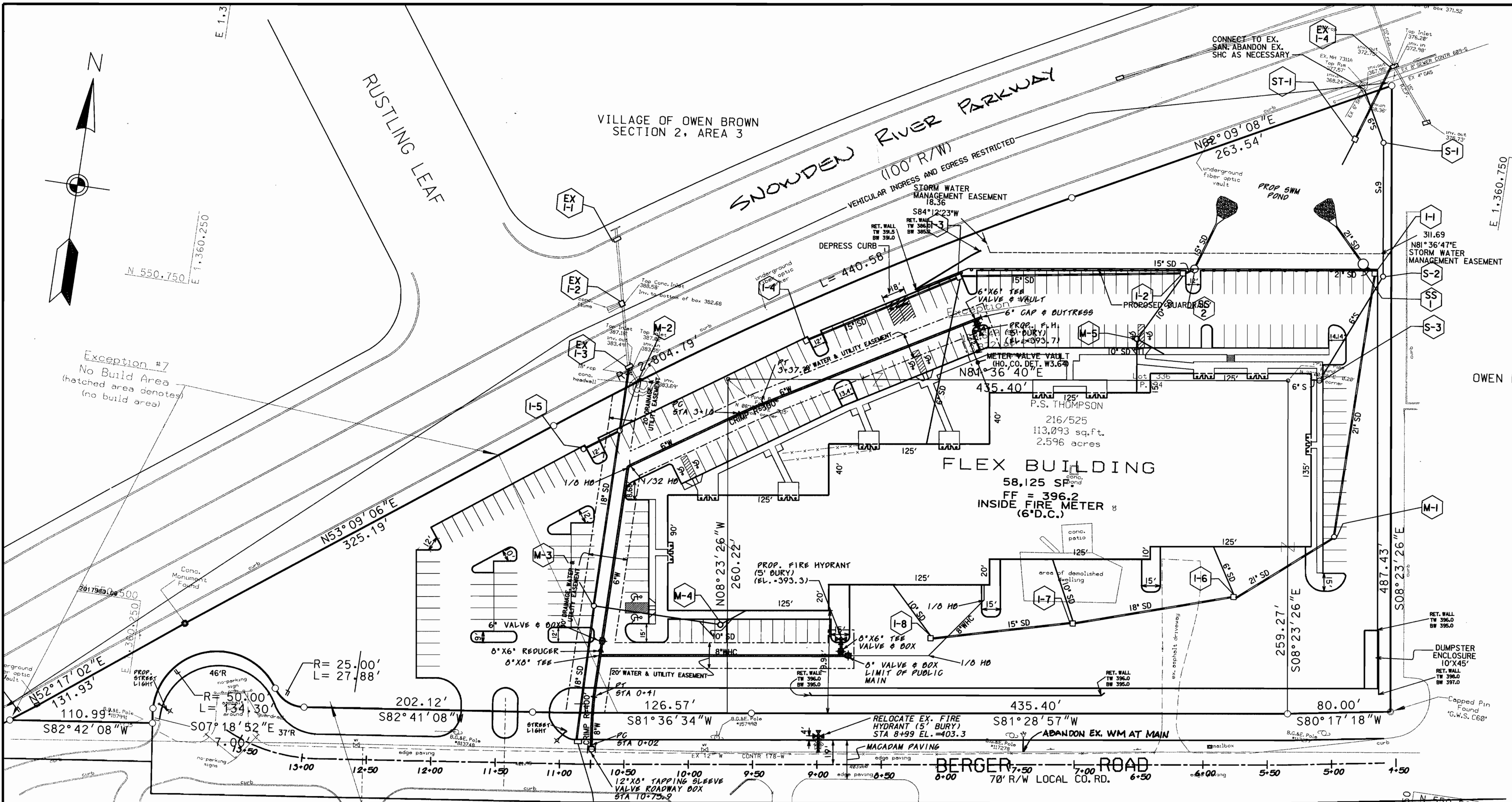
COLUMBIA TECH CENTER
 9212 BERGER ROAD
 CONTRACT NO. 44-3784-D

TAX MAP NO. 30 BLOCK NO. 7
 PARCEL/LOT NO. : 194 & 401 ZONING : M-1 & NT
 6th ELECTION DISTRICT HOWARD COUNTY, MARYLAND

P&J FILE NO.
 8099-01

SCALE
 AS
 SHOWN

SHEET
 1 OF 1



BENCH MARK: HOWARD CO. GEODETIC CONTROL
 STA 42CA NORTH 551695.723
 EAST 1362506.439
 ELEV. = 37.14
 STA 361B NORTH 553348.642
 EAST 1364085.211
 ELEV. = 386.337'

PIPE CHART	EST QUANTITY	AS-BUILT QUANTITY	TYPE
6" DIP	460 LF		
8" DIP	409 LF		
FIRE HYDRANT	2		
RELOCATED FIRE HYDRANT	2		
6" VALVE & BOX	2		
1/2" COPPER	33 LF		

WAT CODE: E-06
 SEWER CODE: 5330300
 TEST CODE: 700-00

VICINITY MAP 1"=600'

TYPE OF BUILDING: OFFICE/WAREHOUSE
 NO. OF LOTS: 1
 NO. OF WATER HOUSE CONNECTIONS: 1
 NO. OF SEWER HOUSE CONNECTIONS: 1 (EXISTING)
 DRAINAGE AREA:
 TREATMENT PLANT: PATAPSCO
 WATER CODE: E-06
 SEWER CODE: 5330300

OWEN BROWN BUSINESS SDP 79-11E

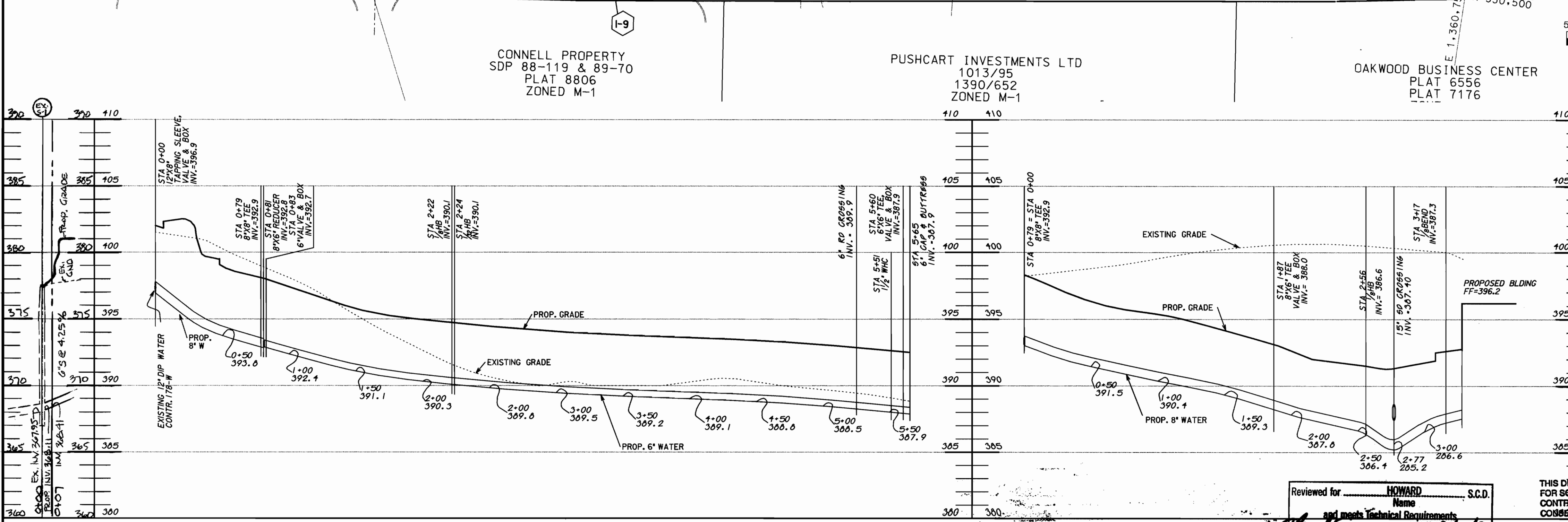
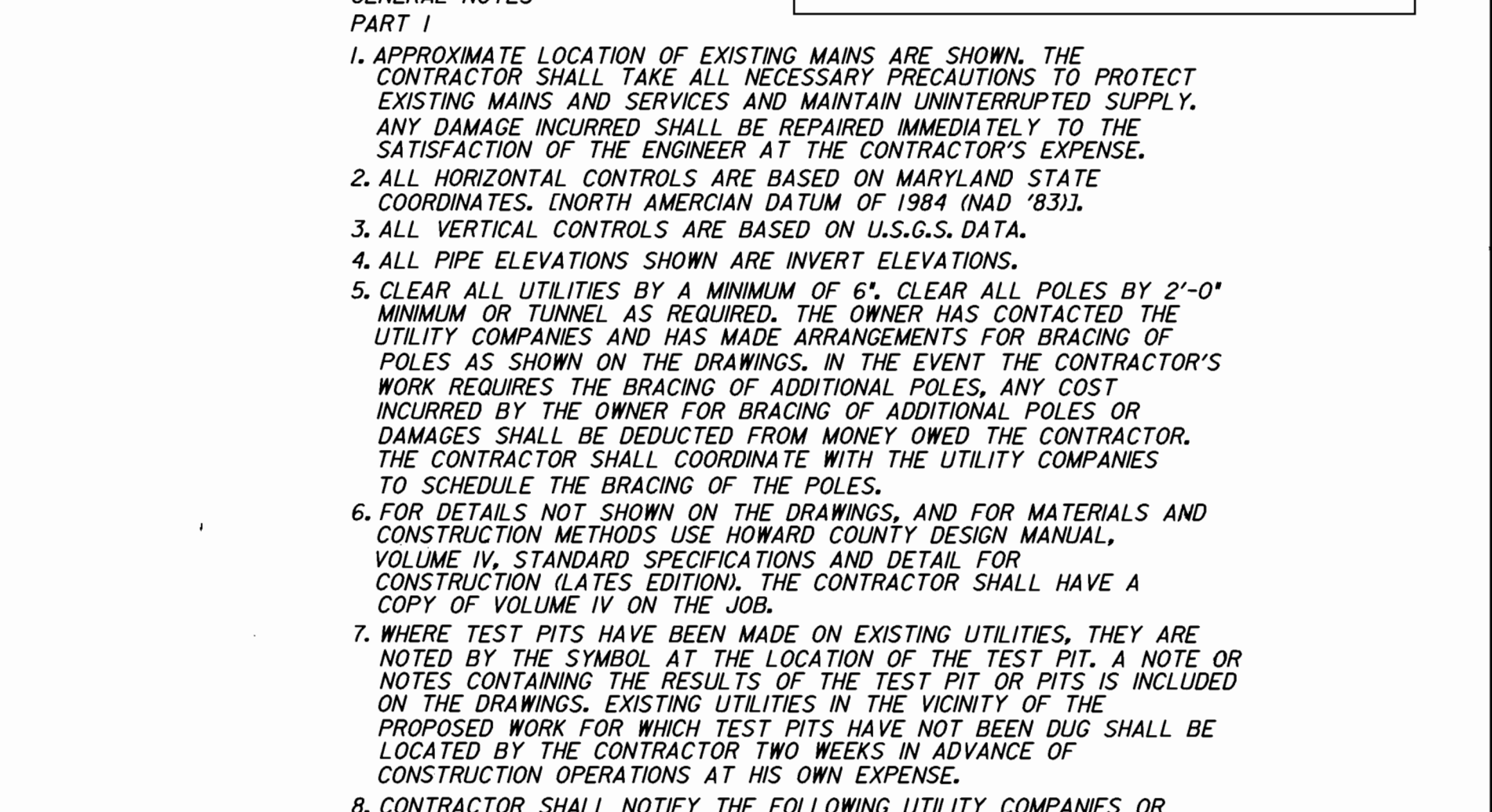
GENERAL NOTES
 PART I

- APPROXIMATE LOCATION OF EXISTING MAINS ARE SHOWN. THE CONTRACTOR SHALL TAKE ALL NECESSARY PRECAUTIONS TO PROTECT EXISTING MAINS AND SERVICES AND MAINTAIN UNINTERRUPTED SUPPLY. ANY DAMAGE INCURRED SHALL BE REPAIRED IMMEDIATELY TO THE SATISFACTION OF THE ENGINEER AT THE CONTRACTOR'S EXPENSE.
- ALL HORIZONTAL CONTROLS ARE BASED ON MARYLAND STATE COORDINATES. (NORTH AMERICAN DATUM OF 1984 (NAD '83)).
- ALL VERTICAL CONTROLS ARE BASED ON U.S.G.S. DATA.
- ALL PIPE ELEVATIONS SHOWN ARE INVERT ELEVATIONS.
- CLEAR ALL UTILITIES BY A MINIMUM OF 6'. CLEAR ALL POLES BY 2'-0" MINIMUM OR TUNNEL AS REQUIRED. THE OWNER HAS CONTACTED THE UTILITY COMPANIES AND HAS MADE ARRANGEMENTS FOR BRACING OF POLES AS SHOWN ON THE DRAWINGS. IN THE EVENT THE CONTRACTOR'S WORK REQUIRES THE BRACING OF ADDITIONAL POLES, ANY COST INCURRED BY THE OWNER FOR BRACING OF ADDITIONAL POLES OR DAMAGES SHALL BE DEDUCTED FROM MONEY OWED THE CONTRACTOR. THE CONTRACTOR SHALL COORDINATE WITH THE UTILITY COMPANIES TO SCHEDULE THE BRACING OF THE POLES.
- FOR DETAILS NOT SHOWN ON THE DRAWINGS, AND FOR MATERIALS AND CONSTRUCTION METHODS USE HOWARD COUNTY DESIGN MANUAL, VOLUME IV, STANDARD SPECIFICATIONS AND DETAIL FOR CONSTRUCTION LATEST EDITION. THE CONTRACTOR SHALL HAVE A COPY OF VOLUME IV ON THE JOB.
- WHERE TEST PITS HAVE BEEN MADE ON EXISTING UTILITIES, THEY ARE NOTED BY THE SYMBOL AT THE LOCATION OF THE TEST PIT. A NOTE OR NOTES CONTAINING THE RESULTS OF THE TEST PIT OR PITS IS INCLUDED ON THE DRAWINGS. EXISTING UTILITIES IN THE VICINITY OF THE PROPOSED WORK FOR WHICH TEST PITS HAVE NOT BEEN DUG SHALL BE LOCATED BY THE CONTRACTOR TWO WEEKS IN ADVANCE OF CONSTRUCTION OPERATIONS AT HIS OWN EXPENSE.
- CONTRACTOR SHALL NOTIFY THE FOLLOWING UTILITY COMPANIES OR AGENCIES AT LEAST FIVE (5) WORKING DAYS BEFORE STARTING WORK SHOWN ON THESE PLANS:

STATE HIGHWAY ADMINISTRATION	(410) 531-5533
BGE CONTRACTOR SERVICES	(410) 850-4620
BGE UNDER GROUND DAMAGE CONTROL	(410) 291-4607
MISS UTILITY PIPELINE CO.	(800) 257-7777
HOWARD COUNTY DEPARTMENT OF PUBLIC WORKS, BUREAU OF UTILITIES	(410) 549-4120
BELL ATLANTIC	(800) 446-5266
- TREES AND SHRUBS ARE TO BE PROTECTED FROM DAMAGE TO MAXIMUM EXTENT. TREES AND SHRUBS LOCATED WITHIN THE CONSTRUCTION STRIP ARE NOT TO BE REMOVED OR DAMAGED BY THE CONTRACTOR.
- CONTRACTOR SHALL REMOVE TREES, STUMPS AND ROOTS ALONG LINE OF EXCAVATION. PAYMENT FOR SUCH REMOVAL SHALL BE INCLUDED IN THE UNIT PRICE BID FOR CONSTRUCTION OF THE MAIN.

II. GENERAL NOTES (SEE ATTACHED).

12. THE CONTRACTOR SHALL NOTIFY THE BUREAU OF HIGHWAYS, HOWARD COUNTY, AT (410) 313-2450 AT LEAST FIVE (5) WORKING DAYS BEFORE ANY OPEN CUT OF ANY COUNTY ROAD OR BORING/JACKING OPERATION IN COUNTY ROADS FOR LAYING WATER/SEWER MAINS OR HOUSE CONNECTIONS. THE APPROVAL OF THESE DRAWINGS WILL CONSTITUTE COMPLIANCE WITH DPW REQUIREMENTS PER SECTION 18.14(a) OF THE HOWARD COUNTY CODE.



SEWER (SDP-19-139)

WATER PROFILES
 SCALE 1"=50'H, 1"=5'V

Reviewed for: HOWARD CO. S.C.D.
 Name: [Signature]
 Date: 8/19/99
 Signature: [Signature]
 Date: 8/19/99
 Approved: [Signature]
 Name: Howard S.C.D.

THIS DEVELOPMENT PLAN IS APPROVED FOR SOIL EROSION AND SEDIMENT CONTROL BY THE HOWARD SOIL CONSERVATION DISTRICT.

WATER CODE E-06
 SEWER CODE 5330300
 VILLAGE OF OWEN BROWN SECTION 2/ AREA 3

CONTRACT 44-3784-D
 COLUMBIA TECH CENTER
 VILLAGE OF OWEN BROWN SECTION 2, AREA 3
 BERGER ROAD

APPROVED: DEPARTMENT OF PUBLIC WORKS
 HOWARD COUNTY, MARYLAND

APPROVED: DEPARTMENT OF PLANNING AND ZONING
 HOWARD COUNTY, MARYLAND

PURDUM and JESCHKE, LLC
 Consulting Engineers and Land Surveyors Civil · Structural · Environmental
 The Professional Engineering Center
 8005 Harford Road - Baltimore, Maryland 21234
 Phone: 410-668-8800 - Fax: 410-668-8801

DESIGNED BY: PCR
 DRAWN BY: JLP
 CHECKED BY: PCR
 DATE: 7/13/99

BY: NO. REVISION DATE

PLAN & PROFILE SHEET

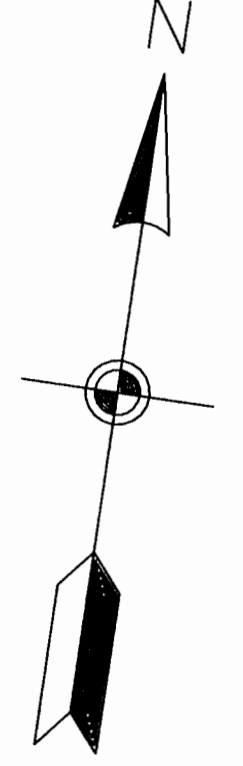
COLUMBIA TECH CENTER
 9212 BERGER ROAD
 CONTRACT NO. 44-3784-D

TAX MAP NO. 30 BLOCK No. 7
 PARCEL/LOT No.: 194 & 401 ZONING: M-1 & NT
 6th ELECTION DISTRICT HOWARD COUNTY, MARYLAND

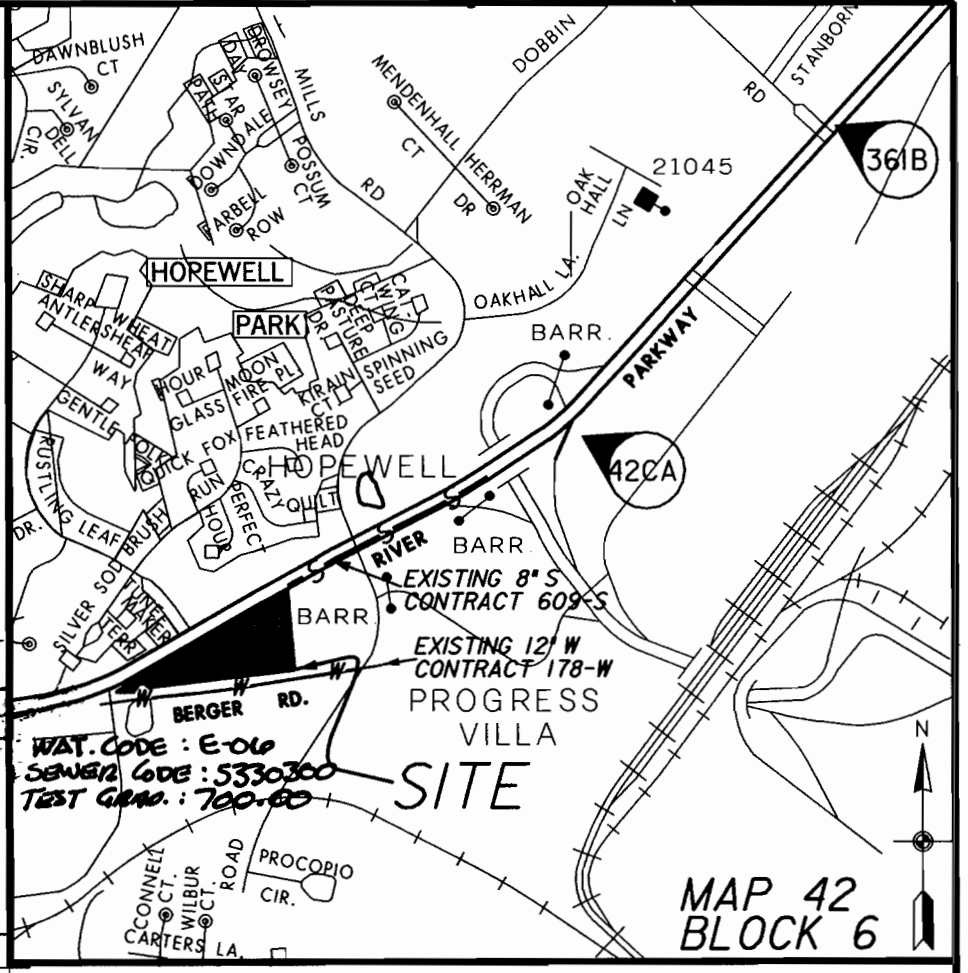
P&J FILE NO. 8099-01

SCALE AS SHOWN

SHEET 1 OF 1



BENCH MARK: HOWARD CO. GEODETIC CONTROL
 STA 42CA NORTH 551695.723
 EAST 1362506.439
 ELEV. 337.147'
 STA 361B NORTH 553348.642
 EAST 1364085.211
 ELEV. 386.337'



PIPE CHART		AS-BUILT	
TYPE	EST QUANTITY	QUANTITY	TYPE
6" DIP	460 LF	445 LF	CL-52
8" DIP	409 LF	411 LF	CL-52
FIRE HYDRANT	2	2	K&N
RELOCATED FIRE HYDRANT	2	2	MUELLER
6" VALVE & BOX	2	1	MUELLER
1/2" COPPER	33 LF	8 LF	TYPE K
2" COPPER	0	23 LF	TYPE K
8" VALVE & BOX	1	1	MUELLER
(2"x8" T&E VALVE	1	1	

TYPE OF BUILDING: OFFICE/WAREHOUSE
 NO. OF LOTS: 1
 NO. OF WATER HOUSE CONNECTIONS: 1
 NO. OF SEWER HOUSE CONNECTIONS: 1 (EXISTING)
 DRAINAGE AREA:
 TREATMENT PLANT: PATAPSCO
 WATER CODE E06
 SEWER CODE 5930300

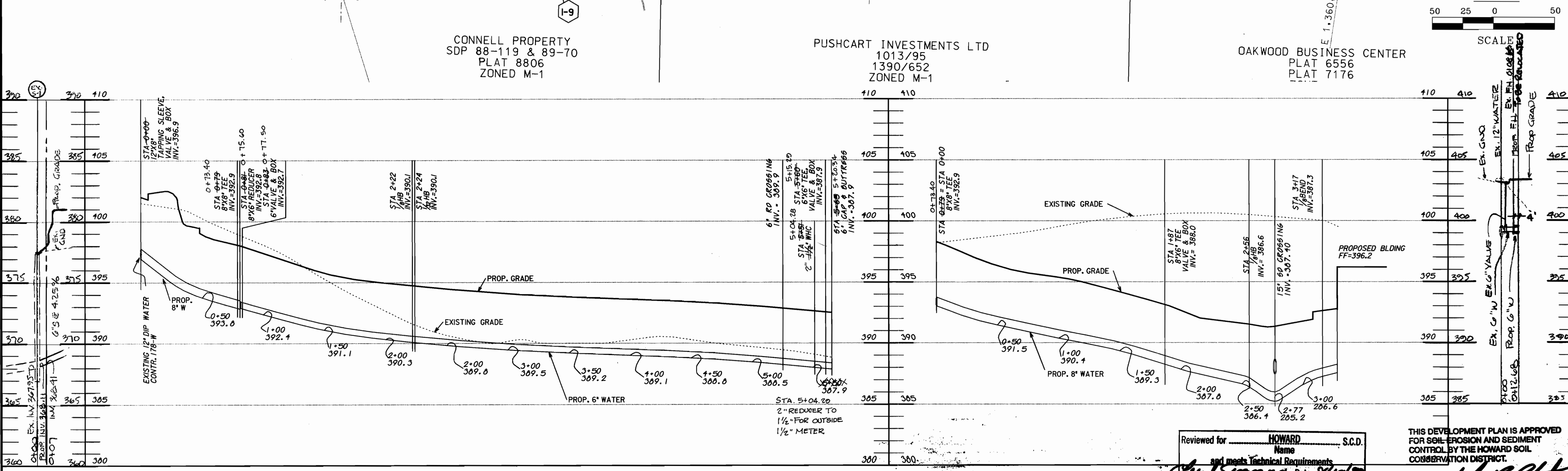
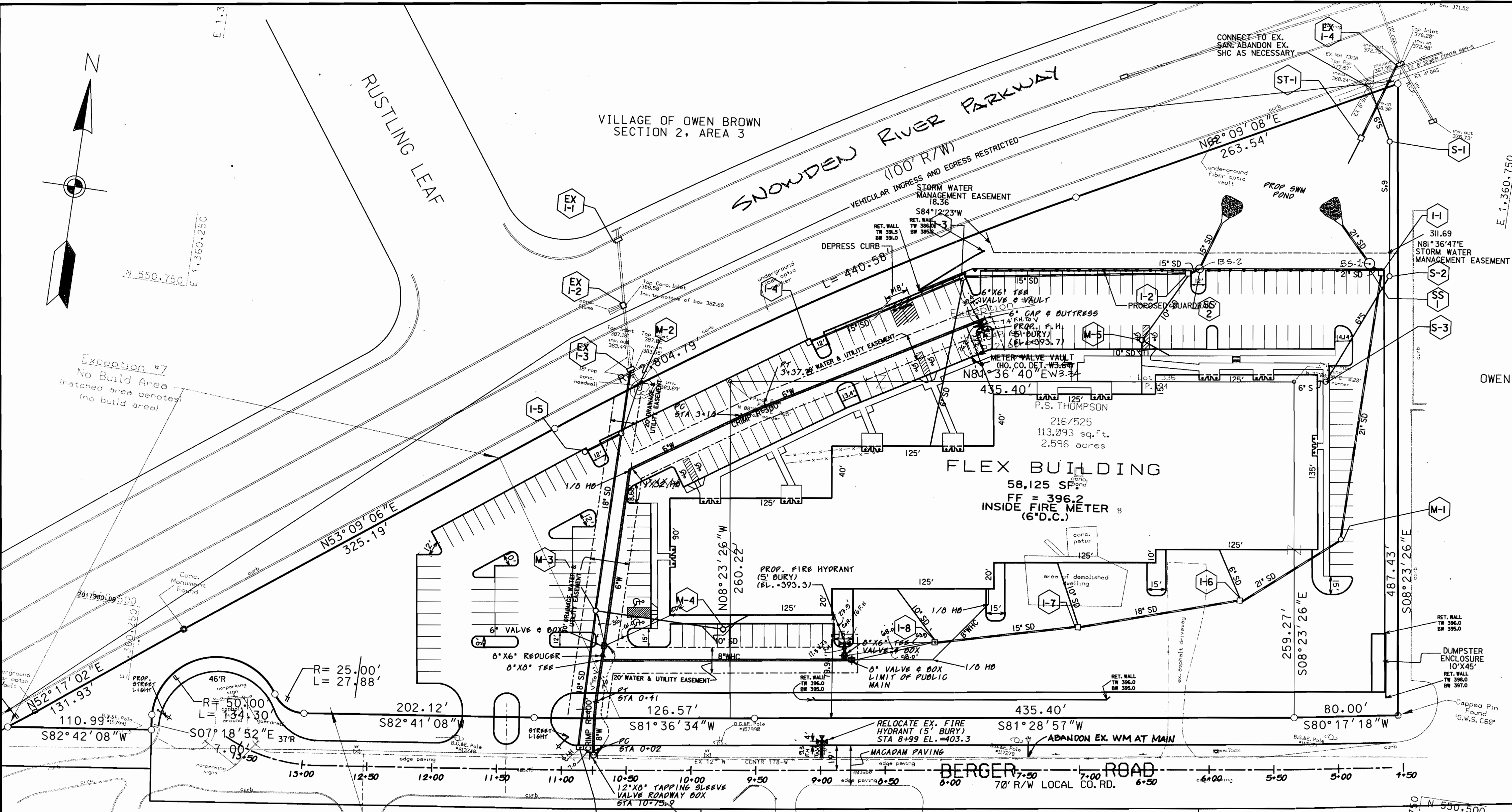
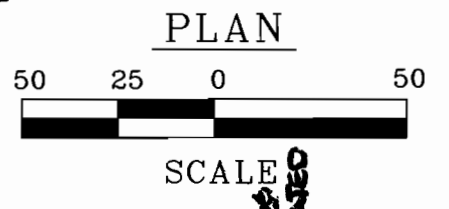
GENERAL NOTES
 PART I

- APPROXIMATE LOCATION OF EXISTING MAINS ARE SHOWN. THE CONTRACTOR SHALL TAKE ALL NECESSARY PRECAUTIONS TO PROTECT EXISTING MAINS AND SERVICES AND MAINTAIN UNINTERRUPTED SUPPLY. ANY DAMAGE INCURRED SHALL BE REPAIRED IMMEDIATELY TO THE SATISFACTION OF THE ENGINEER AT THE CONTRACTOR'S EXPENSE.
- ALL HORIZONTAL CONTROLS ARE BASED ON MARYLAND STATE COORDINATES. (NORTH AMERICAN DATUM OF 1984 (NAD '83)).
- ALL VERTICAL CONTROLS ARE BASED ON U.S.G.S. DATA.
- ALL PIPE ELEVATIONS SHOWN ARE INVERT ELEVATIONS.
- CLEAR ALL UTILITIES BY A MINIMUM OF 6'. CLEAR ALL POLES BY 2'-0" MINIMUM OR TUNNEL AS REQUIRED. THE OWNER HAS CONTACTED THE UTILITY COMPANIES AND HAS MADE ARRANGEMENTS FOR BRACING OF POLES AS SHOWN ON THE DRAWINGS. IN THE EVENT THE CONTRACTOR'S WORK REQUIRES THE BRACING OF ADDITIONAL POLES, ANY COST INCURRED BY THE OWNER FOR BRACING OF ADDITIONAL POLES OR DAMAGES SHALL BE DEDUCTED FROM MONEY OWED THE CONTRACTOR. THE CONTRACTOR SHALL COORDINATE WITH THE UTILITY COMPANIES TO SCHEDULE THE BRACING OF THE POLES.
- FOR DETAILS NOT SHOWN ON THE DRAWINGS, AND FOR MATERIALS AND CONSTRUCTION METHODS USE HOWARD COUNTY DESIGN MANUAL, VOLUME IV, STANDARD SPECIFICATIONS AND DETAIL FOR CONSTRUCTION (LATEST EDITION). THE CONTRACTOR SHALL HAVE A COPY OF VOLUME IV ON THE JOB.
- WHERE TEST PITS HAVE BEEN MADE ON EXISTING UTILITIES, THEY ARE NOTED BY THE SYMBOL AT THE LOCATION OF THE TEST PIT. A NOTE OR NOTES CONTAINING THE RESULTS OF THE TEST PIT OR PITS IS INCLUDED ON THE DRAWINGS. EXISTING UTILITIES IN THE VICINITY OF THE PROPOSED WORK FOR WHICH TEST PITS HAVE NOT BEEN DUG SHALL BE LOCATED BY THE CONTRACTOR TWO WEEKS IN ADVANCE OF CONSTRUCTION OPERATIONS AT HIS OWN EXPENSE.
- CONTRACTOR SHALL NOTIFY THE FOLLOWING UTILITY COMPANIES OR AGENCIES AT LEAST FIVE (5) WORKING DAYS BEFORE STARTING WORK SHOWN ON THESE PLANS:

STATE HIGHWAY ADMINISTRATION	(410) 531-5533
BGE CONTRACTOR SERVICES	(410) 850-4620
BGE UNDER GROUND DAMAGE CONTROL	(410) 291-4607
MISS UTILITY	(800) 257-7777
COLONIAL PIPELINE CO.	(410) 549-4120
HOWARD COUNTY DEPARTMENT OF PUBLIC WORKS, BUREAU OF UTILITIES	(410) 313-4900
BELL ATLANTIC	(800) 446-5266
- TREES AND SHRUBS ARE TO BE PROTECTED FROM DAMAGE TO MAXIMUM EXTENT. TREES AND SHRUBS LOCATED WITHIN THE CONSTRUCTION STRIP ARE NOT TO BE REMOVED OR DAMAGED BY THE CONTRACTOR.
- CONTRACTOR SHALL REMOVE TREES, STUMPS AND ROOTS ALONG LINE OF EXCAVATION. PAYMENT FOR SUCH REMOVAL SHALL BE INCLUDED IN THE UNIT PRICE BID FOR CONSTRUCTION OF THE MAIN.
- GENERAL NOTES (SEE ATTACHED).
- THE CONTRACTOR SHALL NOTIFY THE BUREAU OF HIGHWAYS, HOWARD COUNTY, AT (410) 313-2450 AT LEAST FIVE (5) WORKING DAYS BEFORE ANY OPEN CUT OF ANY COUNTY ROAD OR BORING/JACKING OPERATION IN COUNTY ROADS FOR LAYING WATER/SEWER MAINS OR HOUSE CONNECTIONS. THE APPROVAL OF THESE DRAWINGS WILL CONSTITUTE COMPLIANCE WITH DPW REQUIREMENTS PER SECTION 18.114(c) OF THE HOWARD COUNTY CODE.

PART II - WATER

- ALL WATER MAINS TO BE D.I.P. CLASS 52 UNLESS OTHERWISE NOTED.
- TOPS OF ALL WATER MAINS TO HAVE A MINIMUM OF 3-1/2" COVER UNLESS OTHERWISE NOTED.
- VALVES ADJACENT TO TEES SHALL BE STRAPPED TO TEES.
- ALL FITTINGS SHALL BE BUTTRESSED OR ANCHORED WITH CONCRETE IN ACCORDANCE WITH THE STANDARD DETAILS UNLESS OTHERWISE PROVIDED FOR ON THE DRAWINGS.
- FIRE HYDRANTS SHALL BE SET TO THE BURY LINE ELEVATIONS SHOWN ON THE DRAWINGS. ALL FIRE HYDRANTS SHALL BE RESTRAINED AND BUTTRESSED WITH CONCRETE IN ACCORDANCE WITH THE STANDARD DETAILS. SOIL AROUND THE FIRE HYDRANT SHALL BE COMPACTED IN ACCORDANCE WITH SECTION 1000 AND 1005 OF THE STANDARD SPECIFICATIONS.
- THE CONTRACTOR SHALL NOT OPERATE ANY WATER MAIN VALVES ON THE EXISTING WATER SYSTEM.



SEWER (SDP-17-137)

WATER PROFILES
 SCALE 1"=50'H, 1"=5'V

Reviewed for: HOWARD S.C.D.
 Name
 and meets Technical Requirements
 Signature: [Signature]
 Date: 5/14/99
 USDA, NATURAL RESOURCES CONSV. SERVICE

THIS DEVELOPMENT PLAN IS APPROVED FOR SOIL EROSION AND SEDIMENT CONTROL BY THE HOWARD SOIL CONSERVATION DISTRICT.
 Approved: [Signature] 5/14/99
 Howard S.C.D. Date

WATER CODE E-06
 SEWER CODE 5930300
 VILLAGE OF OWEN BROWN
 SECTION 2/ AREA 3

CONTRACT 44-3784-D
 COLUMBIA TECH CENTER
 VILLAGE OF OWEN BROWN
 SECTION 2, AREA 3
 BERGER ROAD

APPROVED: DEPARTMENT OF PUBLIC WORKS
 HOWARD COUNTY, MARYLAND

APPROVED: DEPARTMENT OF PLANNING AND ZONING
 HOWARD COUNTY, MARYLAND

[Signature] 8-26-99
 CHIEF, BUREAU OF UTILITIES DATE

[Signature]
 CHIEF, DEVELOPMENT ENGINEERING DIVISION DATE

PURDUM and JESCHKE, LLC
 Consulting Engineers and Land Surveyors Civil - Structural - Environmental
 The Professional Engineering Center
 8005 Harford Road, Baltimore, Maryland 21234
 Phone: 410-668-8800 - Fax: 410-668-8801



DESIGNED BY: PCR
 DRAWN BY: JLP
 CHECKED BY: PCR
 DATE: 7/13/99

PK 1
 ABANDON EX. WM
 11/29/99

K&I 1
 AS-BUILT CONDITIONS ADDED TO PLAN
 10/17/00

BY NO. REVISION DATE

PLAN & PROFILE SHEET

600' SCALE MAP NO. _____ BLOCK NO. _____

COLUMBIA TECH CENTER
 9212 BERGER ROAD
 CONTRACT NO. 44-3784-D

TAX MAP NO. 30 BLOCK NO. 7
 PARCEL/LOT NO.: 194 & 401 ZONING: M-1 & NT
 6th ELECTION DISTRICT HOWARD COUNTY, MARYLAND

P&J FILE NO.
 8099-01

SCALE
 AS
 SHOWN

SHEET
 1 OF 1