

WATER & SEWER EXTENSIONS

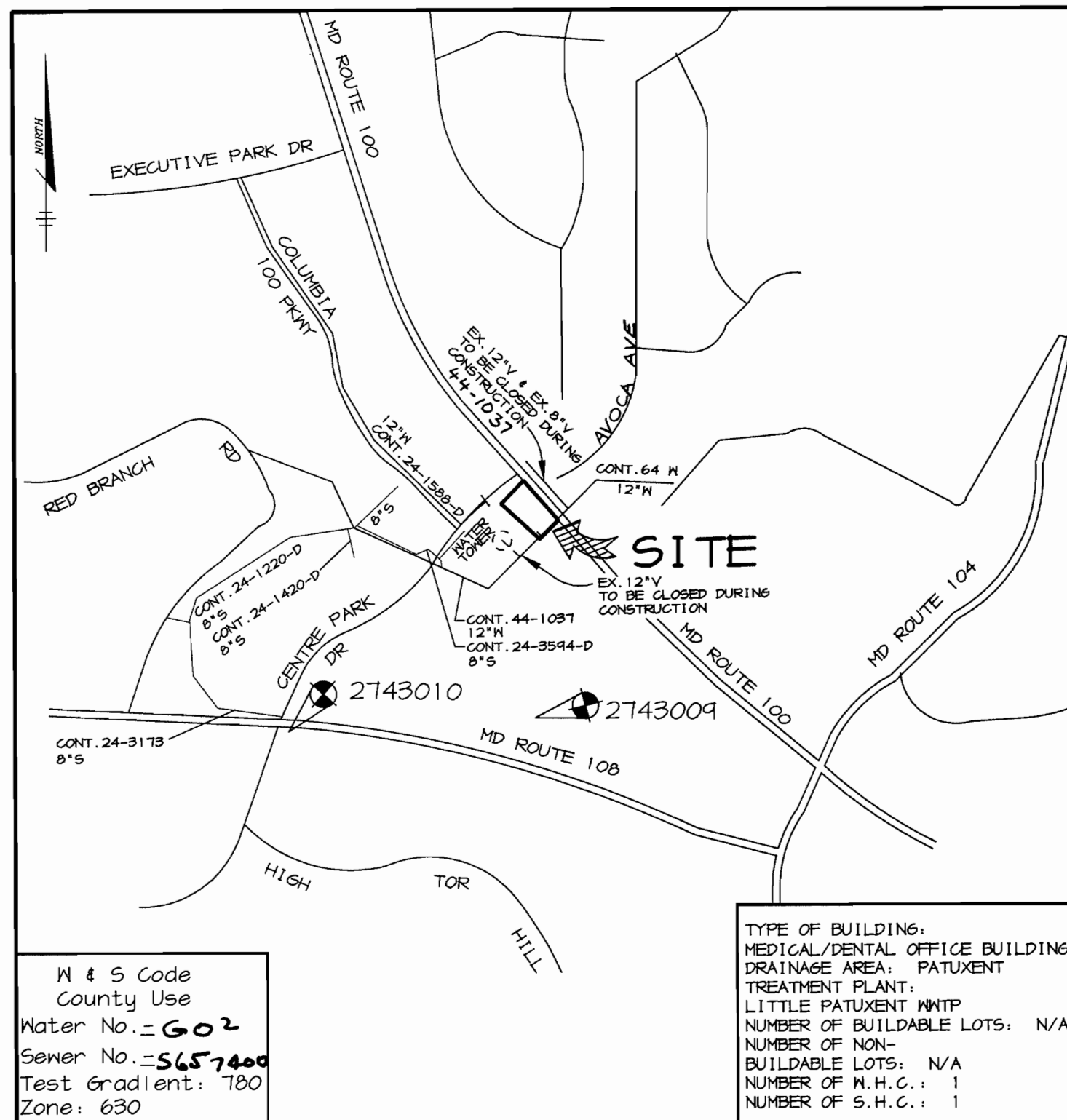
COLUMBIA 100

PARCEL A-2

2nd ELECTION DISTRICT

HOWARD COUNTY, MARYLAND

CONTRACT NO. 24-3767-D



M & S Code
County Use
Water No. = 602
Sewer No. = 5657400
Test Gradient: 780
Zone: 630

TYPE OF BUILDING:
MEDICAL/DENTAL OFFICE BUILDING
DRAINAGE AREA: PATUXENT
TREATMENT PLANT
LITTLE PATUXENT WWTP
NUMBER OF BUILDABLE LOTS: N/A
NUMBER OF NON-BUILDABLE LOTS: N/A
NUMBER OF M.H.C.: 1
NUMBER OF S.H.C.: 1

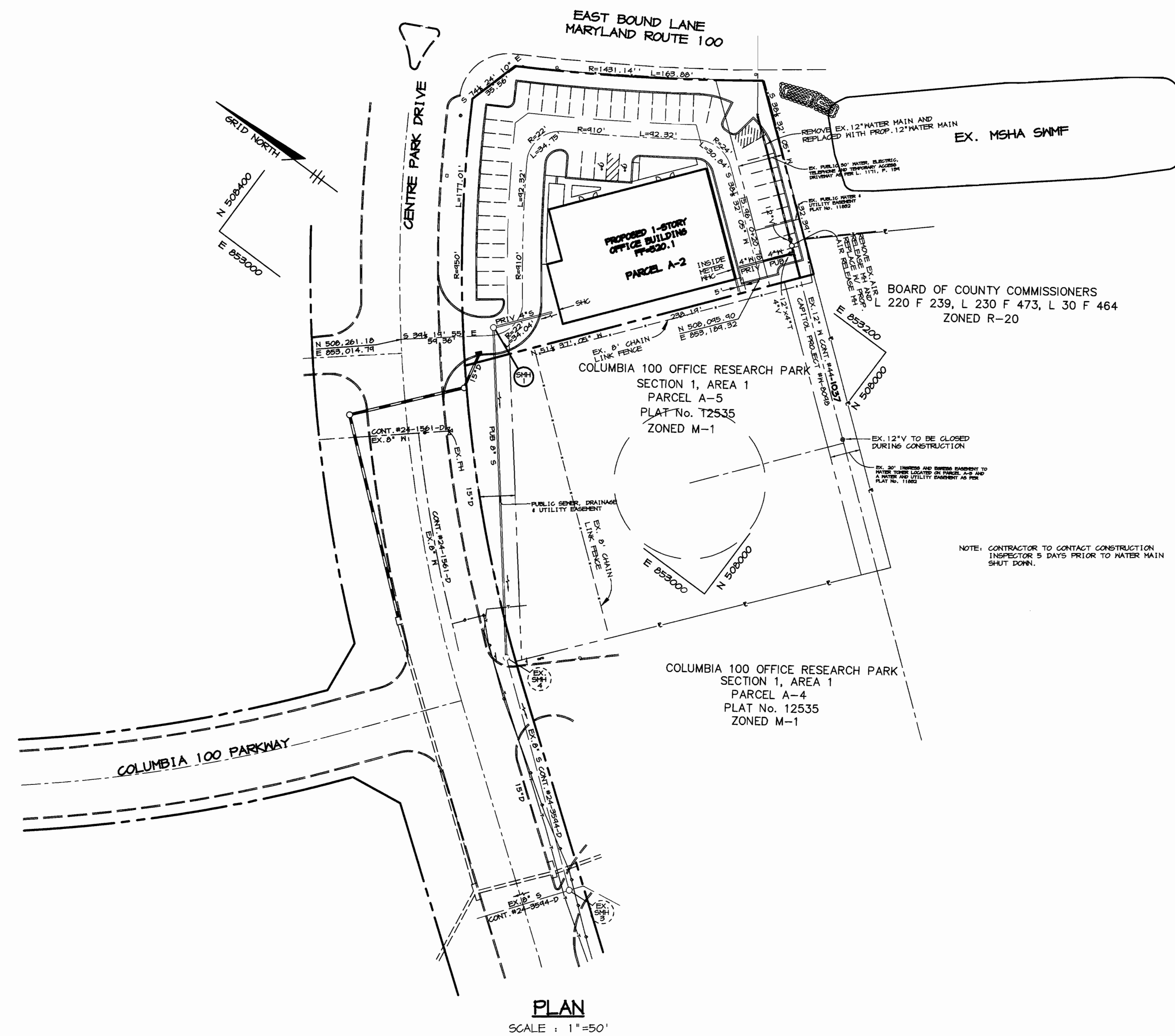
BENCHMARKS

HO. CO. SURVEY CONTROL
STATION: 2743009
N 507,261 E 852,631

HO. CO. SURVEY CONTROL
STATION: 2743010
N 507,089 E 851,924

VICINITY MAP

SCALE: 1"=600'



GENERAL NOTES

- Approximate location of existing mains are shown. The contractor shall take all necessary precautions to protect existing mains and services and maintain uninterrupted supply. Any damage incurred shall be repaired immediately to the satisfaction of the Engineer at the contractor's expense.
- All horizontal controls are based on Maryland State Coordinates.
- All vertical controls are based on U.S.G.S. data.
- All pipe elevations shown are Invert elevations.
- Clear all utilities by a minimum of 6'. Clear all poles by 2'-0" minimum or tunnel as required. The owner has contacted the utility companies and has made arrangements for bracing of poles as shown on the drawings. In the event the contractor's work requires the bracing of additional poles, any cost incurred by the owner for bracing of additional poles or damages shall be deducted from money owed the contractor. The contractor shall coordinate with the utility companies to schedule the bracing of the poles.
- For details not shown on the drawings, and for materials and construction methods use Howard County Design Manual, Volume IV, Standard Specifications and Detail for Construction. (Latest Edition). The contractor shall have a copy of Volume IV on the job.
- Where test pits have been made on existing utilities, they are noted by the symbol at the location of the test pit. A note or notes containing the results of the test pit or pits is included on the drawings. Existing utilities in the vicinity of the proposed work for which test pits have not been dug shall be located by the contractor two weeks in advance of construction operations at his own expense.
- Contractor shall notify the following utility companies or agencies at least five working days before starting work shown on these plans:

State Highway Administration	531-5533
Baltimore Gas & Electric Co. Contractor Services	850-4620
Baltimore Gas & Electric Co. Underground Damage Control	781-4068
Miss Utility	1-800-257-7777
Colonial Pipeline Co.	745-1340
Bureau of Utilities, Howard County Department of Public Works	313-4400
- Trees and shrubs are to be protected from damage to maximum extent. Trees and shrubs located within the construction strip are not to be removed or damaged by the contractor.
- Contractor shall remove trees, stumps and roots along line of excavation. Payment for such removal shall be included in the unit price bid for construction of the main.
- All water mains to be D.I.P. Class 52 unless otherwise noted.
- Top of all water mains to have a minimum of 3-1/2' cover unless otherwise noted.
- Valves adjacent to tees shall be strapped to tees.
- All fittings shall be buttressed or anchored with concrete in accordance with the Standard Details unless otherwise provided for on the drawings.
- The contractor shall not operate any water main provided on the existing water system.
- All water house connections shall be for inside meter setting unless otherwise noted on plans or in specifications.
- All sewer mains shall be D.I.P. and P.V.C. unless otherwise noted.
- All manholes shall be 4'-0" inside diameter unless otherwise noted.
- Force mains shall be D.I.P. only.
- Manholes shown with 12" and 16" walls are for brick manholes only.
- Manholes designated N.T. in plan and profile shall have watertight frame and covers, Standard Detail 65.52. Where watertight manhole frame and cover is used, set top of frame 1'-6" above finished grade unless otherwise noted on the drawings.
- House(s) with the symbol "C.N.S." indicates that cellar cannot be served.
- Manholes can be either brick or precast concrete structures.
- Contractor is solely responsible for construction means, methods, techniques, sequences, procedures, and safety precautions and programs.
- The contractor shall notify the Bureau of Highways, Howard County, at (410) 313-7450 at least five (5) working days before any open cut of any County road or boring/jacking operation in County roads for laying water/sewer mains or house connections. The approval of these drawings will constitute compliance with DPM requirements per Section 10.114(a) of the Howard County Code.
- Howard County DPM is hereby granted permission to access private lots shown on these plans in order to maintain public water and sewer house connections at the curb stops and/or cleanouts.

QUANTITIES

ITEMS	QUANTITIES ESTIMATED	AS-BUILT		
		QUANTITIES	TYPE	MANUFACTURER / SUPPLIER
4" WATER	21 LF			
12" WATER	110 LF			
AIR RELEASE MANHOLE	1 EA.			
8" SEWER	198 LF.			

NAME OF UTILITY CONTRACTOR:

Sediment control measures for this contract will be implemented in accordance with Section 219 of the Specifications and as shown on SDP-99-110

Review for Howard Soil Conservation District and meets technical requirements.

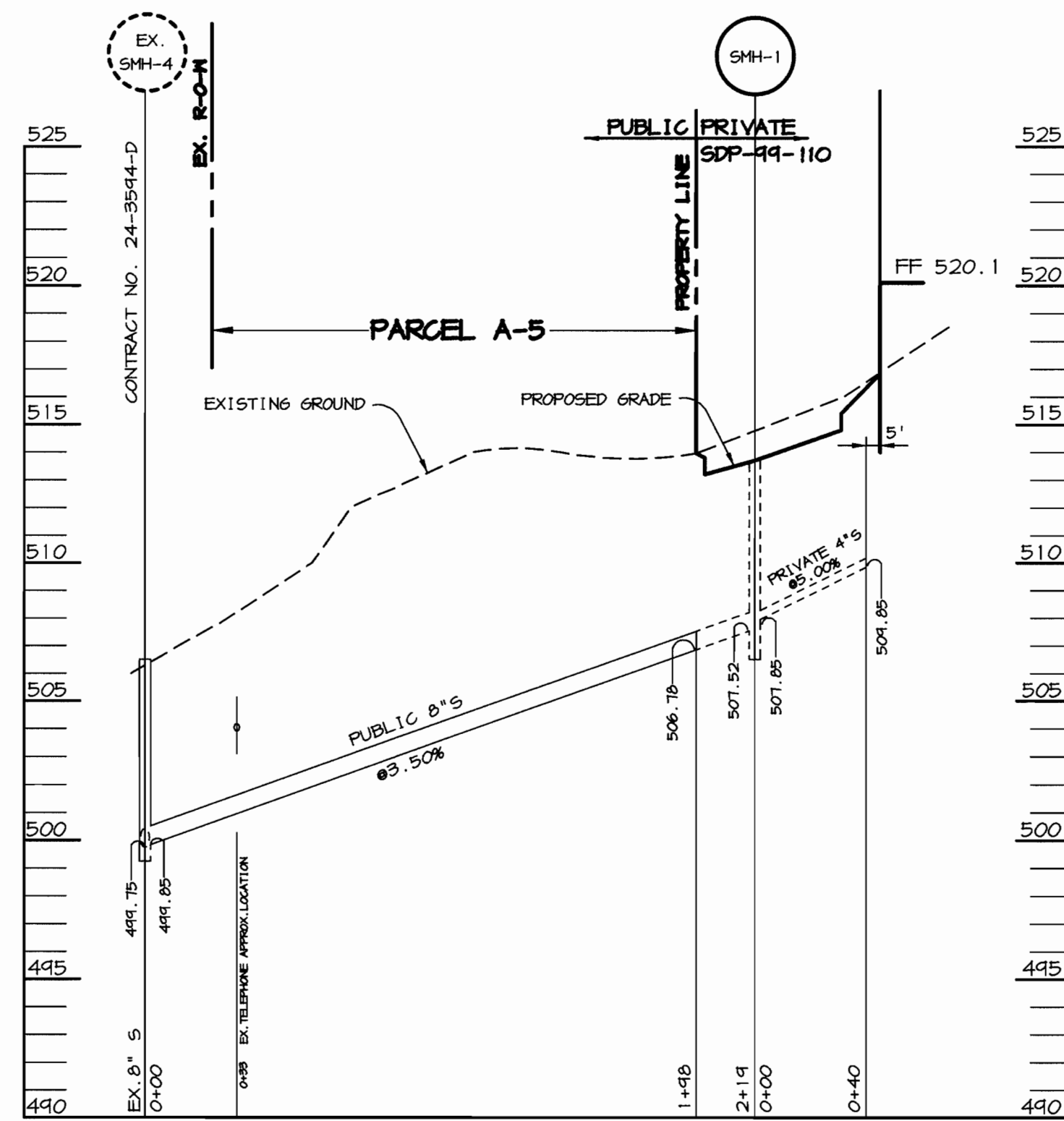
Carol Simmons 6-2-99
NATURAL RESOURCES CONSERVATION SERVICE DATE

This plan is approved for soil erosion and sediment control by the Howard Soil Conservation District.

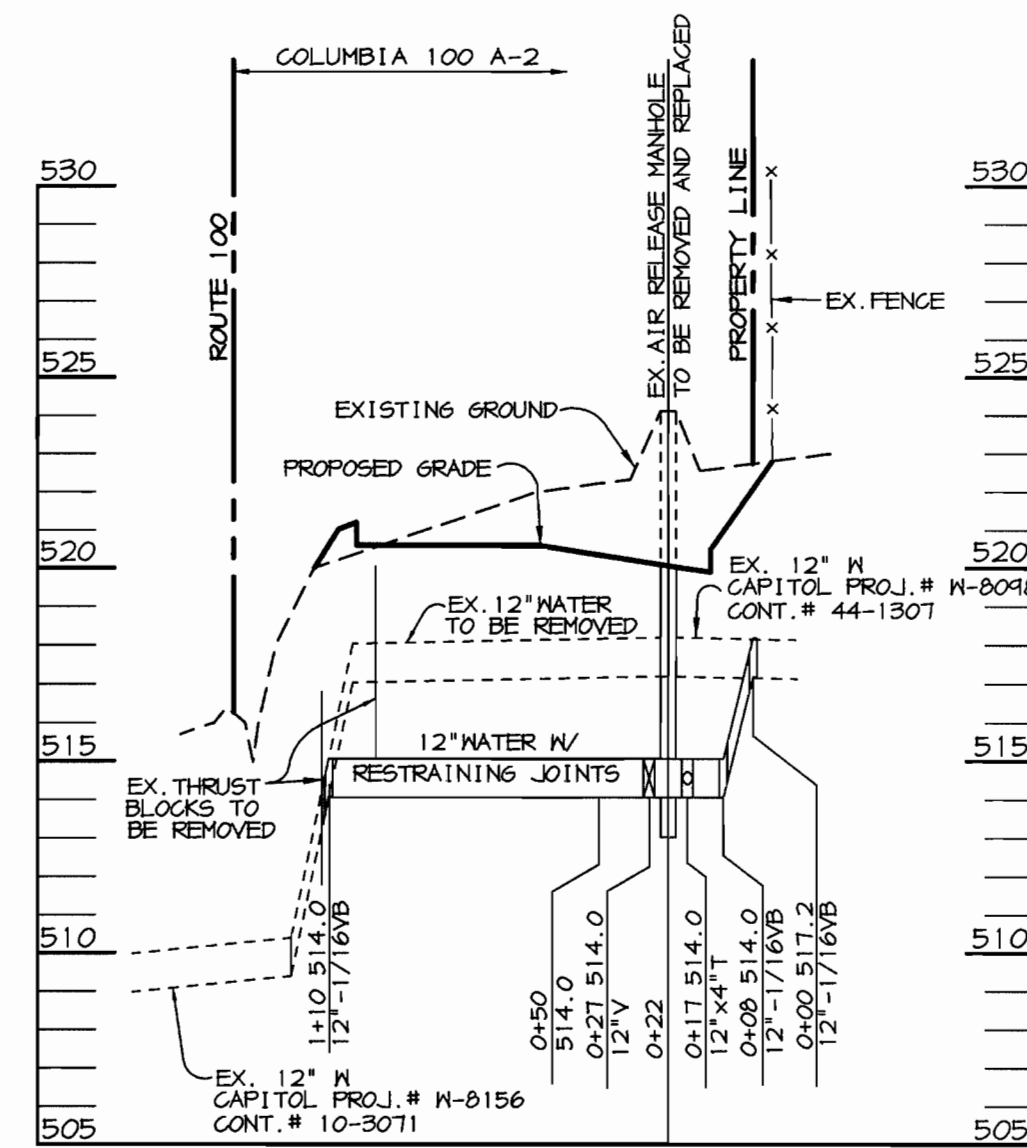
John R. Robertson 6-2-99
HOWARD SOIL CONSERVATION DISTRICT DATE

DEPARTMENT OF PUBLIC WORKS HOWARD COUNTY, MARYLAND <i>Robert R. Reimer</i> 5-26-99 CHIEF, BUREAU OF UTILITIES DATE	DEPARTMENT OF PLANNING & ZONING HOWARD COUNTY, MARYLAND <i>Arthur E. Muegge</i> 6/4/99 CHIEF, DEVELOPMENT ENGINEERING DIVISION DATE	RIEMER MUEGGE & ASSOCIATES, INC. ENGINEERING • ENVIRONMENTAL SERVICES • PLANNING • SURVEYING 8818 Centre Park Drive, Columbia, Maryland 21045 tel 410.997.8900 fax 410.997.9282 99029 WSI.DWG ARTHUR E. MUEGGE # 8707	DES: C.J.R. DRN: DRD CHK: C.J.R. DATE: 5/24/99 BY NO. REVISION DATE	PLAN OF WATER MAIN & SEWER MAINS 600' SCALE MAP NO. 30 BLOCK NO. 18	COLUMBIA 100 OFFICE RESEARCH PARK, PARCEL A-2 TAX MAP 30, BLOCK 18 2nd ELECTION DISTRICT HOWARD COUNTY, MARYLAND CONTRACT 24-3767-D SCALE AS SHOWN SHEET 1 OF 2
---	--	--	---	---	---

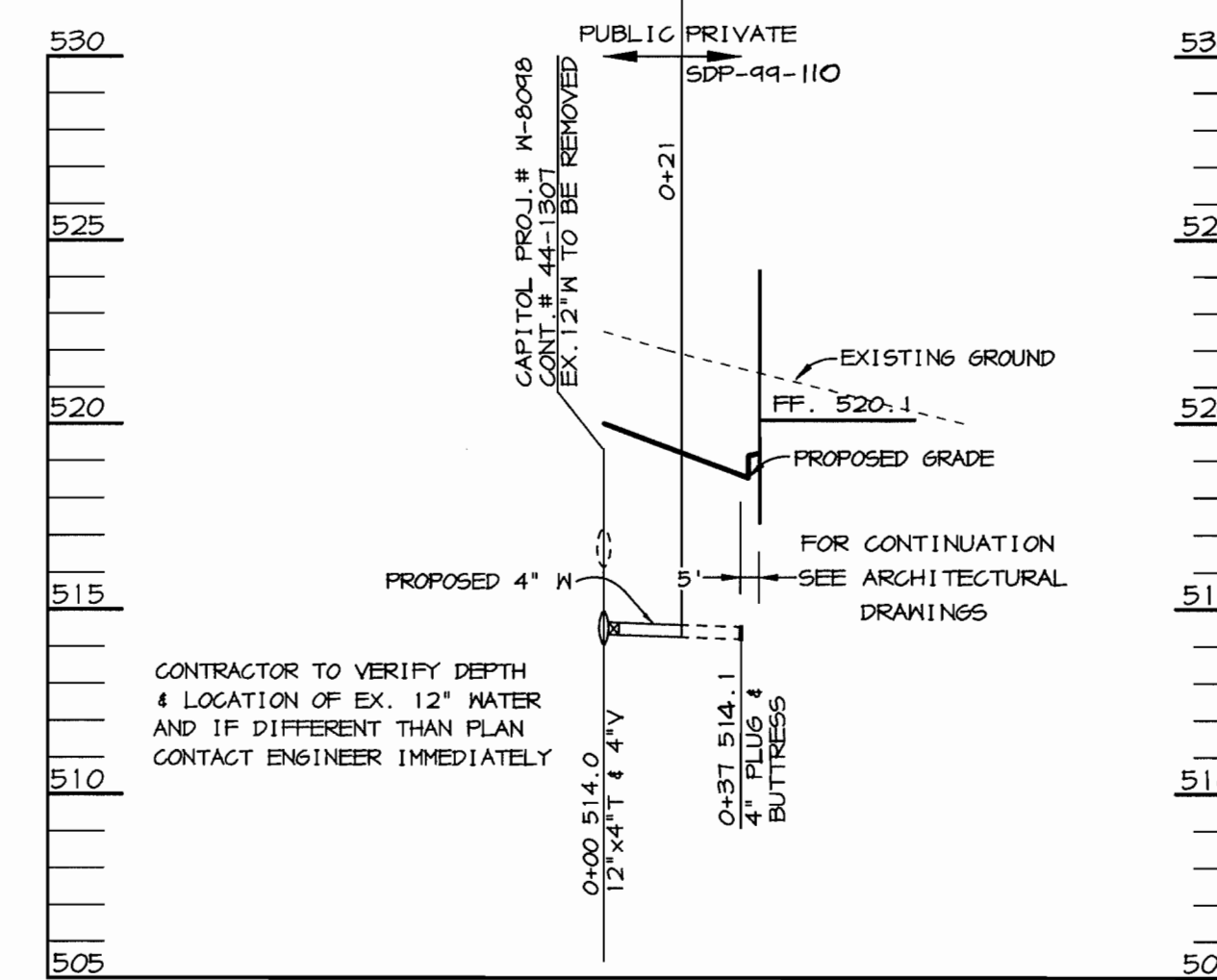
M:\PROJECT\99029\WS2.DWG Mon May 24 08:44:52 1999 Riemer Muegge & Associates, Inc.



SEWER PROFILE
SCALE:
HOR. 1"=50'
VERT. 1"=5'



WATER PROFILE
SCALE:
HOR. 1"=50'
VERT. 1"=5'

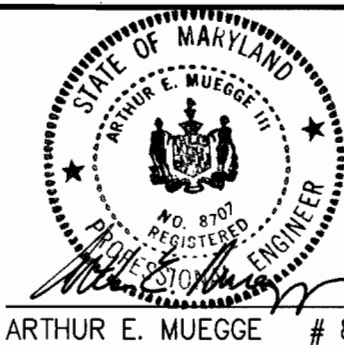


WATER PROFILE
SCALE:
HOR. 1"=50'
VERT. 1"=5'

DEPARTMENT OF PUBLIC WORKS
HOWARD COUNTY, MARYLAND

DEPARTMENT OF PLANNING & ZONING
HOWARD COUNTY, MARYLAND

RIEMER MUEGGE & ASSOCIATES, INC.
ENGINEERING • ENVIRONMENTAL SERVICES • PLANNING • SURVEYING
8818 Centre Park Drive, Columbia, Maryland 21045
tel 410.997.8900 fax 410.997.9282
99029 WS2.DWG



DES: C.J.R.

DRN: DRD

CHK: C.J.R.

DATE: 5/24/99

BY	NO.	REVISION	DATE

WATER & SEWER PROFILES

600' SCALE MAP NO. 30 BLOCK NO. 18

COLUMBIA 100 OFFICE RESEARCH
PARK, PARCEL A-2
TAX MAP 30, BLOCK 18
2nd ELECTION DISTRICT
HOWARD COUNTY, MARYLAND
CONTRACT -

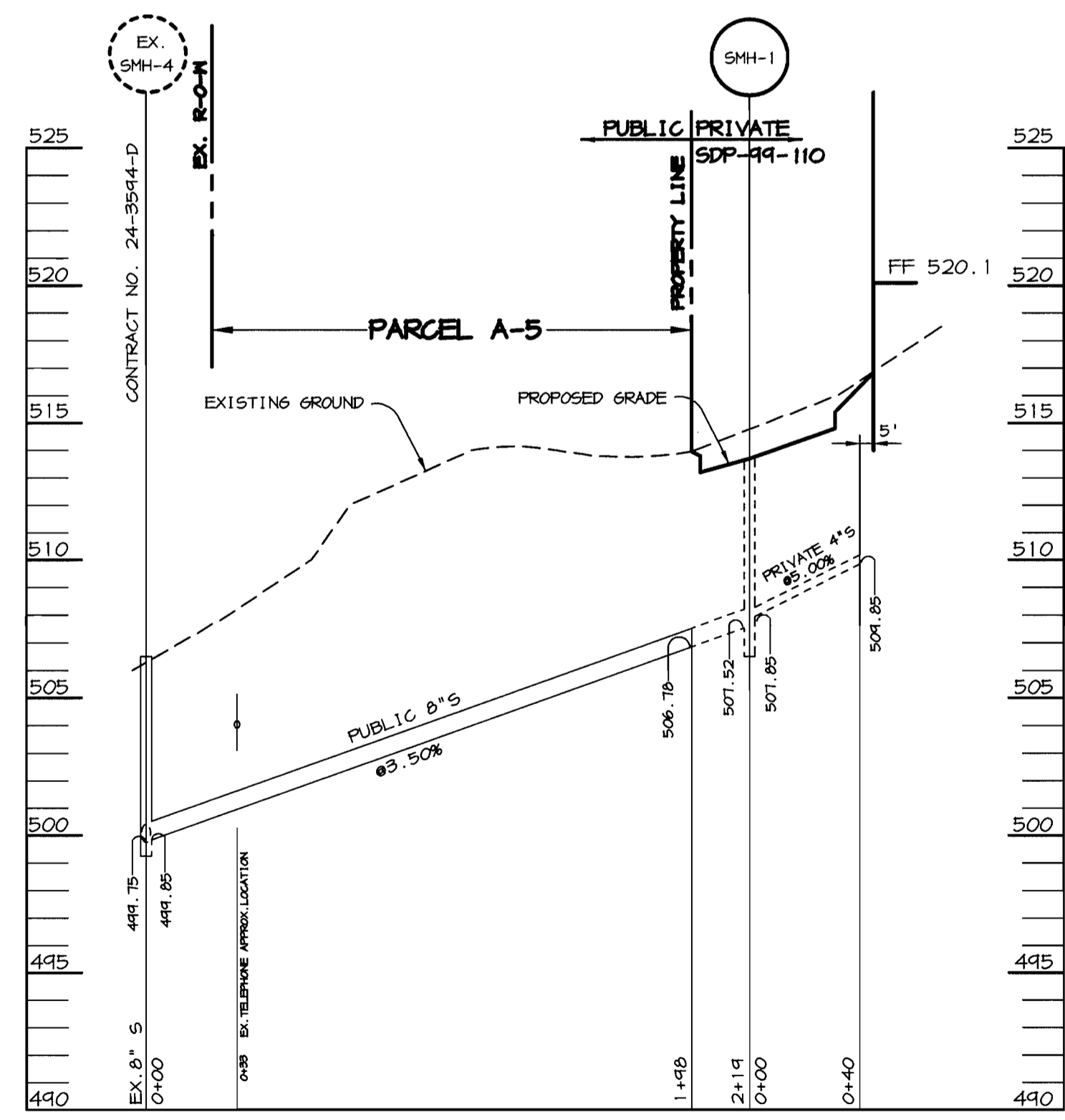
SCALE
AS
SHOWN

SHEET
2 OF 2

Robert Benjamin 5-26-99
CHIEF, BUREAU OF UTILITIES DATE

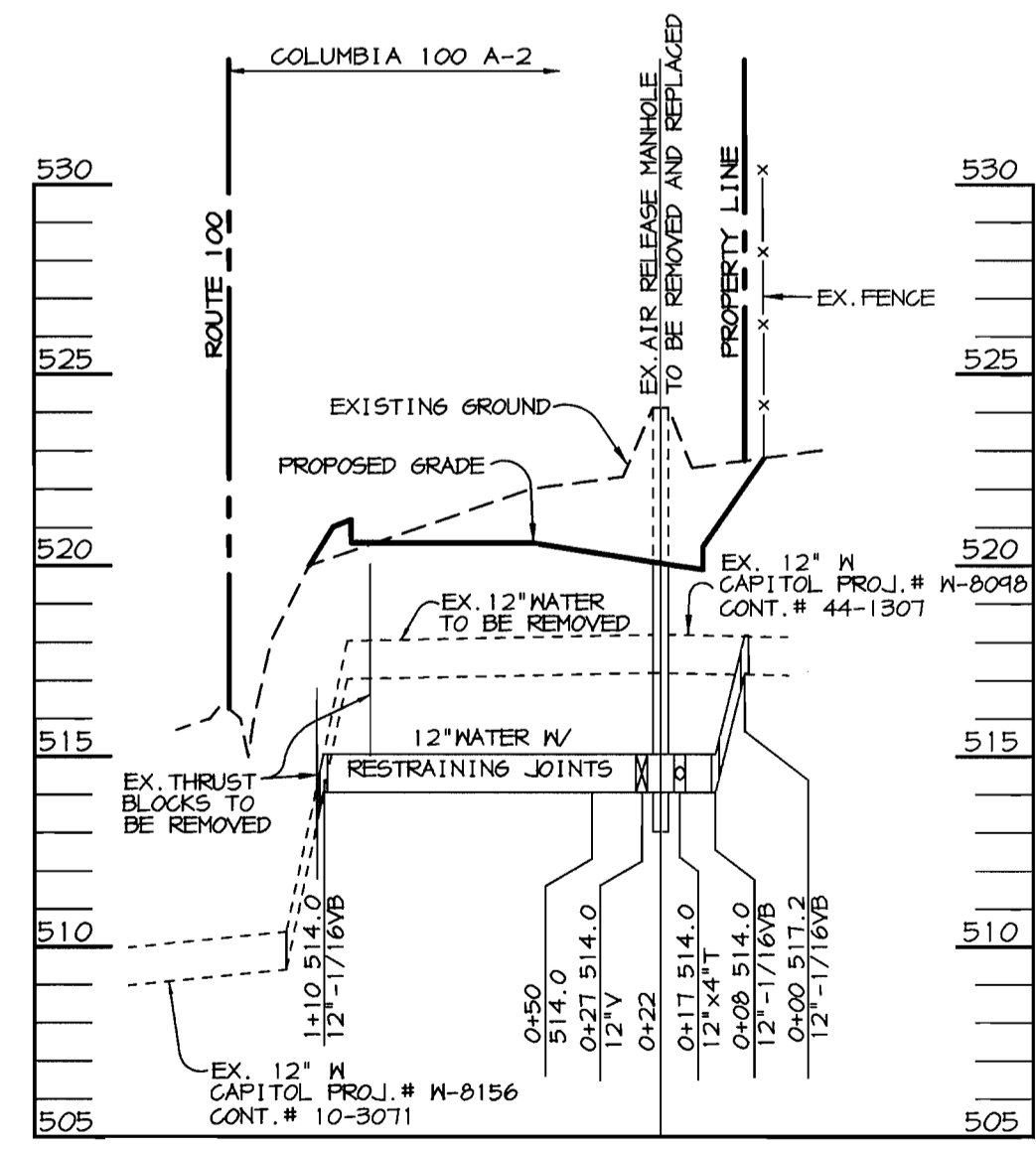
Arthur E. Muegge 6/1/99
CHIEF, DEVELOPMENT ENGINEERING DIVISION DATE

K:\PROJECT\99029\WS2.DWG Mon May 24 08:44:52 1999 Riemer Muegge & Associates, Inc.



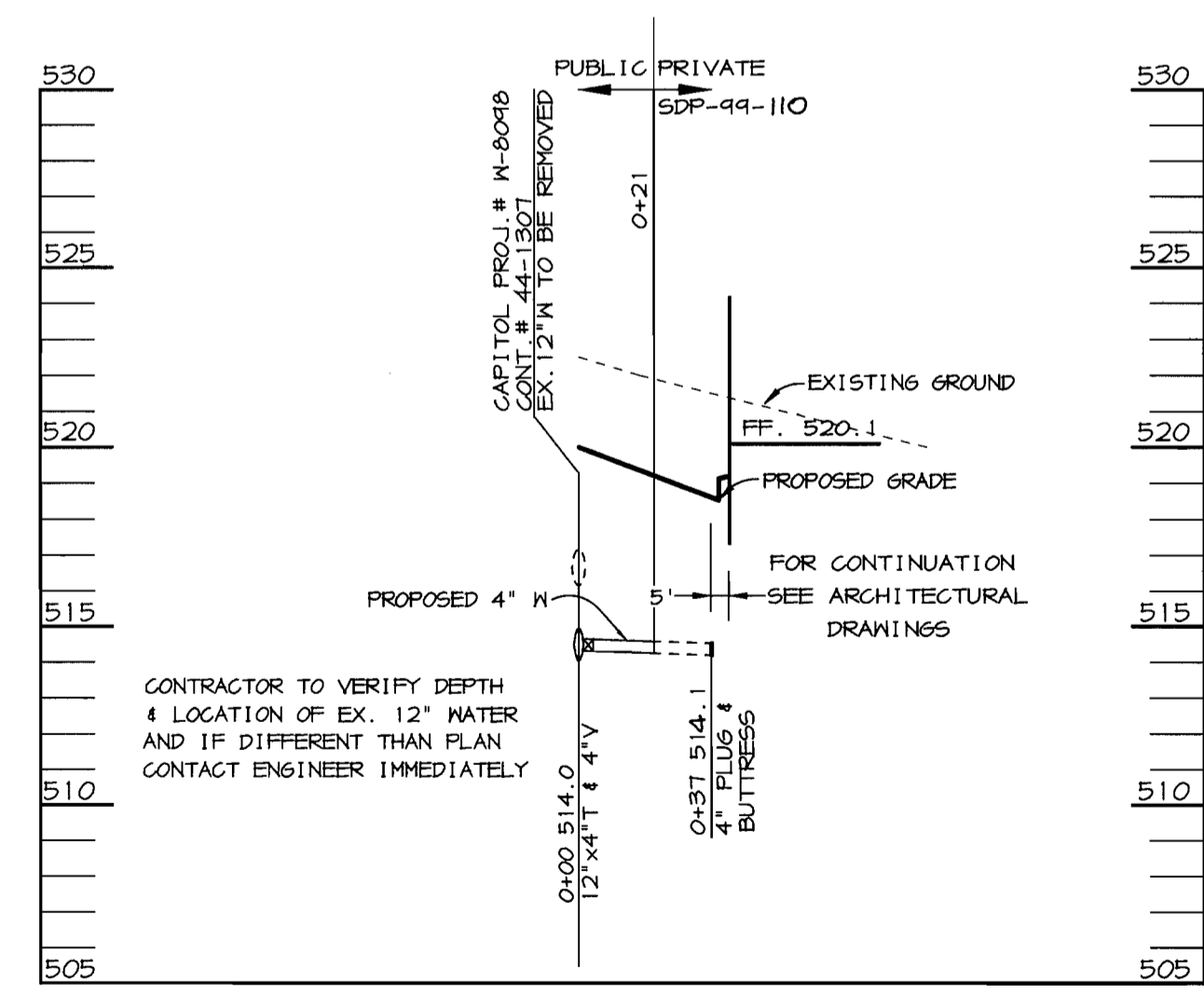
SEWER PROFILE

SCALE:
HOR. 1"=50'
VERT. 1"=5'



WATER PROFILE

SCALE:
HOR. 1"=50'
VERT. 1"=5'



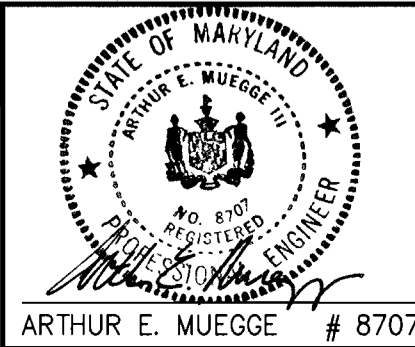
WATER PROFILE

SCALE:
HOR. 1"=50'
VERT. 1"=5'

DEPARTMENT OF PUBLIC WORKS
HOWARD COUNTY, MARYLAND

DEPARTMENT OF PLANNING & ZONING
HOWARD COUNTY, MARYLAND

RIEMER MUEGGE & ASSOCIATES, INC.
ENGINEERING • ENVIRONMENTAL SERVICES • PLANNING • SURVEYING
8818 Centre Park Drive, Columbia, Maryland 21045
tel 410.997.8900 fax 410.997.9282
99029 WS2.DWG



DES: C.J.R.					
DRN: DRD					
CHK: C.J.R.					
DATE: 5/24/99	BY	NO.	REVISION	DATE	

WATER & SEWER PROFILES

600' SCALE MAP NO. 30 BLOCK NO. 18

COLUMBIA 100 OFFICE RESEARCH
PARK, PARCEL A-2
TAX MAP 30, BLOCK 18
2nd ELECTION DISTRICT
HOWARD COUNTY, MARYLAND
CONTRACT 24-3767-D

SCALE
AS
SHOWN

SHEET
2 OF 2

Robert B. Bauer 5-26-99
CHIEF, BUREAU OF UTILITIES DATE

Arthur E. Muegge 6/4/99
CHIEF, DEVELOPMENT ENGINEERING DIVISION DATE