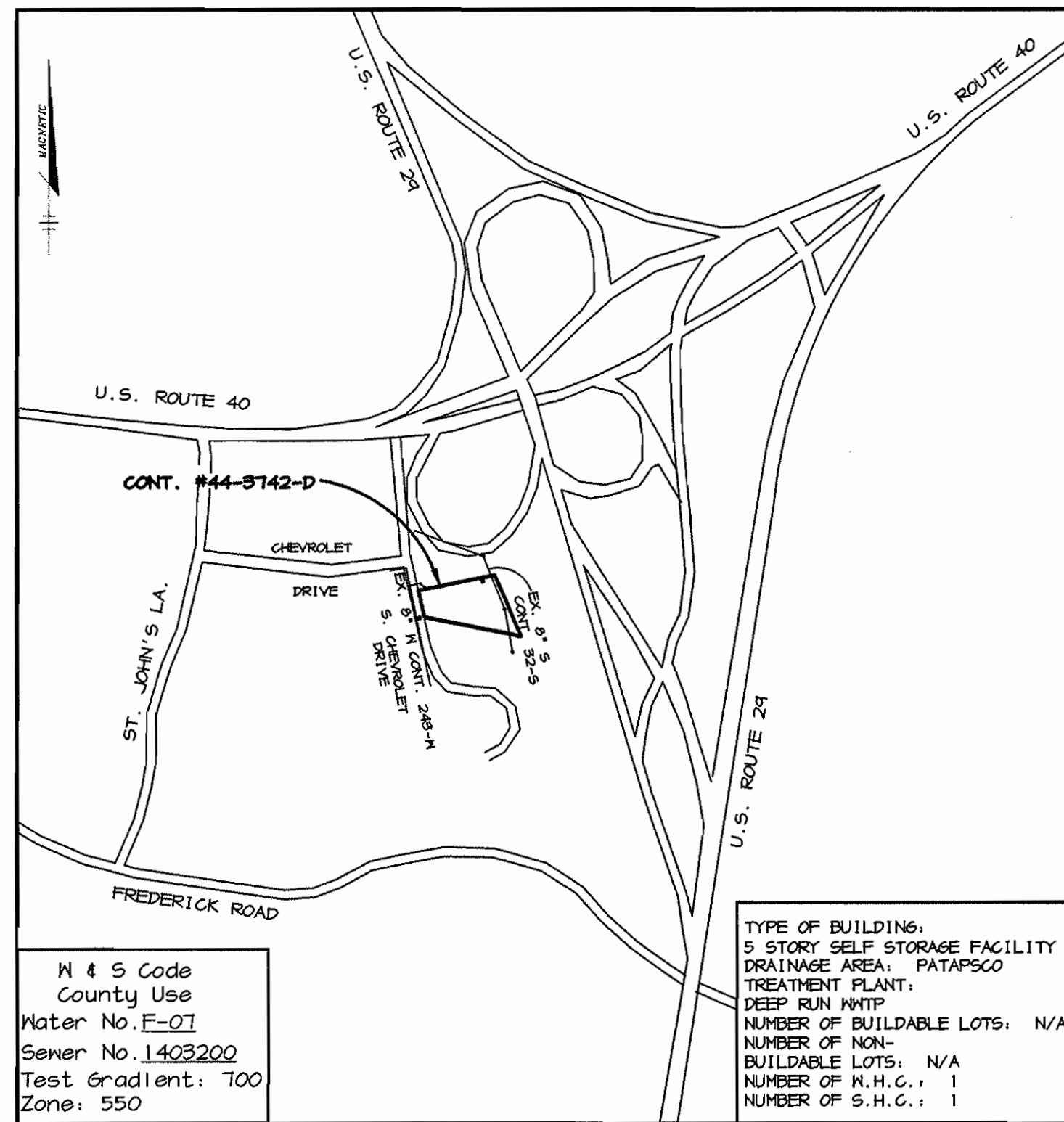


E-Z STORAGE ELLICOTT CITY

CONTRACT NO. 44-3742-D



N 4 S Code
County Use
Water No. E-01
Sewer No. 1405200
Test Gradient: 700
Zone: 550

TYPE OF BUILDING:
5 STORY SELF STORAGE FACILITY
DRAINAGE AREA: FATAP502
TREATMENT PLANT:
DEEP RUN WWTP
NUMBER OF BUILDABLE LOTS: N/A
NUMBER OF NON-BUILDABLE LOTS: N/A
NUMBER OF R.H.C.: 1
NUMBER OF S.H.C.: 1

VICINITY MAP

SCALE: 1"=600'

BENCHMARKS

HO. CO. SURVEY CONTROL
STATION: 24B3
N 586,661 E 1,359,226

HO. CO. SURVEY CONTROL
STATION: 24B5
N 586,456 E 1,356,571

QUANTITIES

ITEMS	QUANTITIES ESTIMATED	AS-BUILT		
		QUANTITIES	TYPE	MANUFACTURER / SUPPLIER
8" WATER	237 LF			
6" WATER	24 LF			
FIRE HYDRANTS	1 EA.			
8" 1/16 HB	1 EA.			
6" VALVES	2 EA.			
8" X 6" T	2 EA.			

NAME OF UTILITY CONTRACTOR:

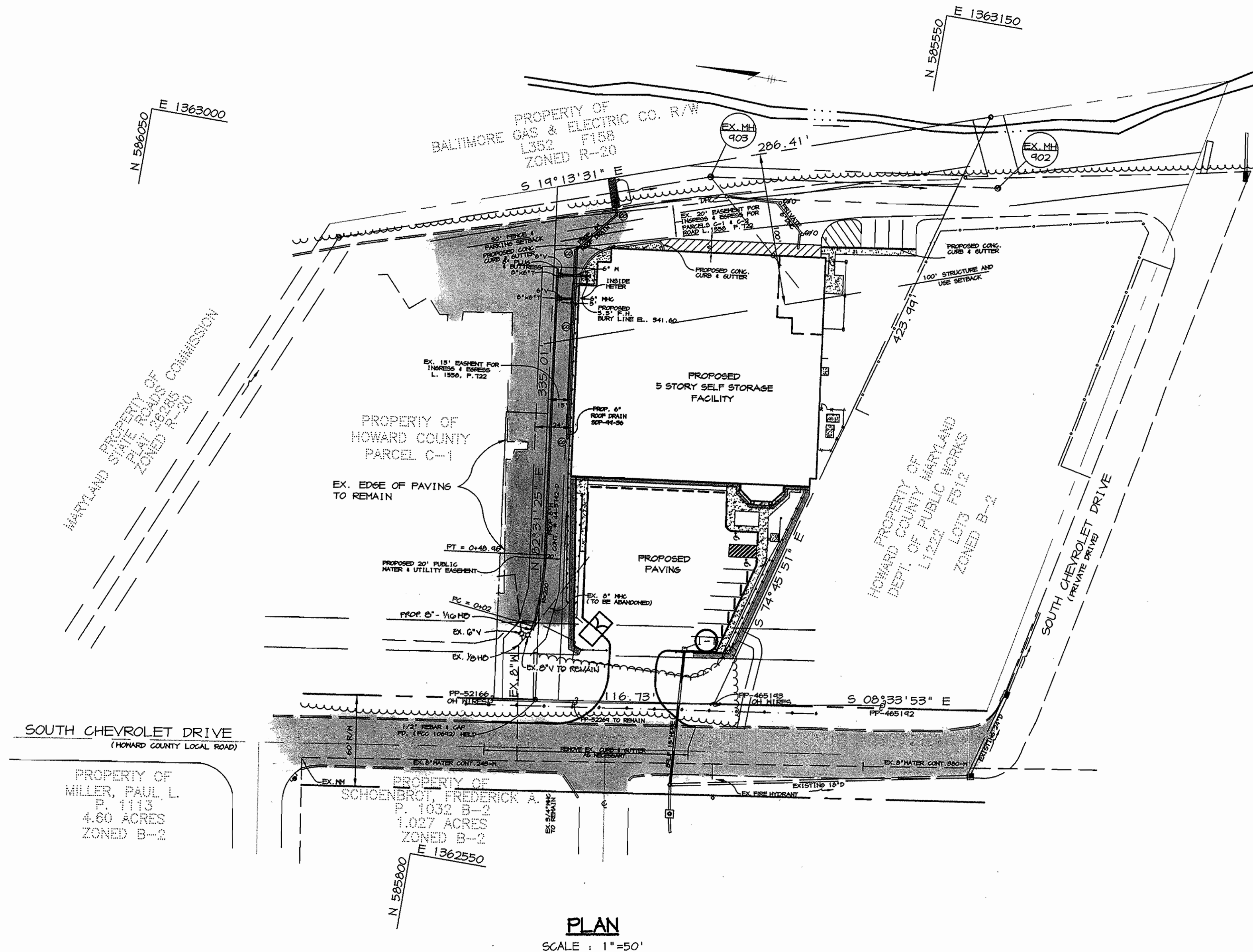
Sediment control measures for this contract will be implemented in accordance with Section 219 of the Specifications and as shown on SDP-99-36

Review for Howard Soil Conservation District and meets technical requirements.

Cheryl Simman 1/13/99
NATURAL RESOURCES CONSERVATION SERVICE DATE

This plan is approved for soil erosion and sediment control by the Howard Soil Conservation District.

John R. Plummer 1/13/99
HOWARD SOIL CONSERVATION DISTRICT DATE



PLAN
SCALE: 1"=50'

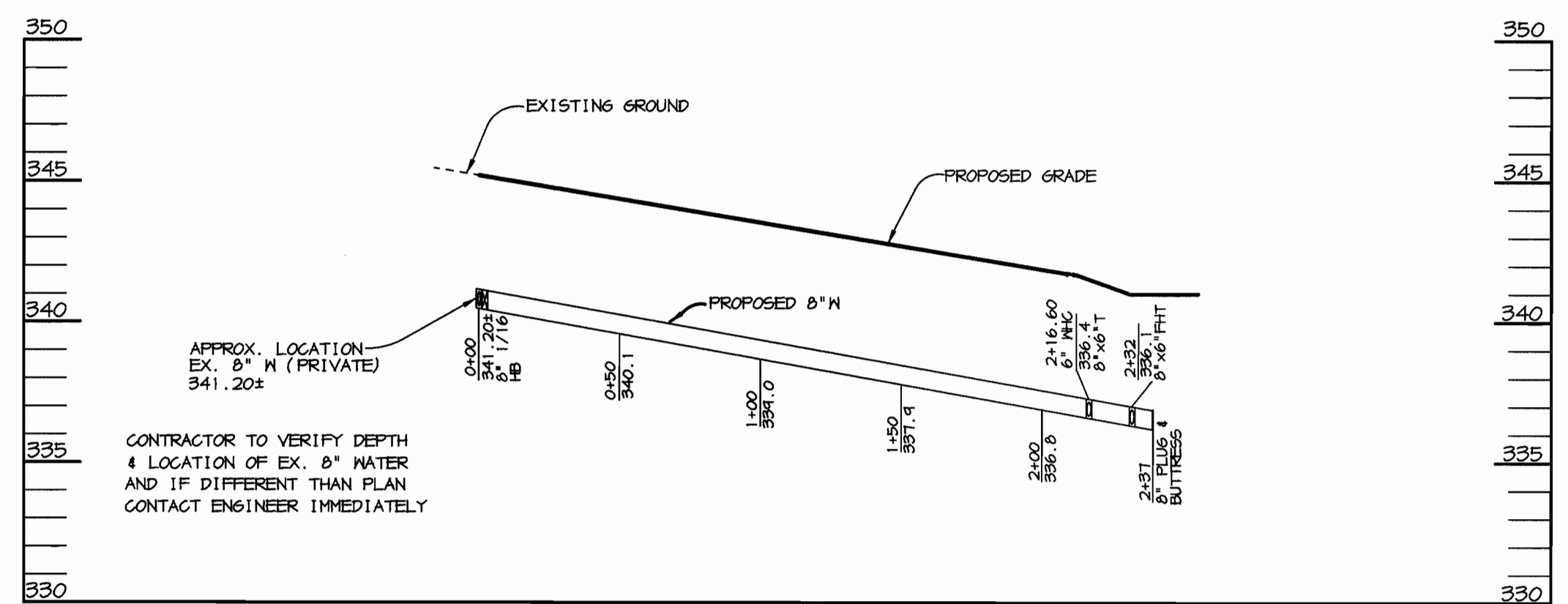
GENERAL NOTES

- Approximate location of existing mains are shown. The contractor shall take all necessary precautions to protect existing mains and services and maintain uninterrupted supply. Any damage incurred shall be repaired immediately to the satisfaction of the Engineer at the Contractor's expense.
- All horizontal controls are based on Maryland State Coordinates.
- All vertical controls are based on U.S.G.S. data.
- All pipe elevations shown are invert elevations.
- Clear all utilities by a minimum of 6'. Clear all poles by 2'-0" minimum or tunnel as required. The owner has contacted the utility companies and has made arrangements for bracing of poles as shown on the drawings. In the event the contractor's work requires the bracing of additional poles, any cost incurred by the owner for bracing of additional poles or damages shall be deducted from money owed the contractor. The contractor shall coordinate with the utility companies to schedule the bracing of the poles.
- For details not shown on the drawings, and for materials and construction methods use Howard County Design Manual, Volume IV, Standard Specifications and Detail for Construction. (Latest Edition). The contractor shall have a copy of Volume IV on the job.
- Where test pits have been made on existing utilities, they are noted by the symbol at the location of the test pit. A note or notes containing the results of the test pit or pits is included on the drawings. Existing utilities in the vicinity of the proposed work for which test pits have not been dug shall be located by the contractor two weeks in advance of construction operations at his own expense.
- Contractor shall notify the following utility companies or agencies at least five working days before starting work shown on these plans.

State Highway Administration	551-5533
Baltimore Gas & Electric Co. Contractor Services	850-4620
Baltimore Gas & Electric Co. Underground Damage Control	787-9088
Miss Utility	1-800-257-7171
Colonial Pipeline Co.	785-1540
Bureau of Utilities, Howard County Department of Public Works	313-4900
- Trees and shrubs are to be protected from damage to maximum extent. Trees and shrubs located within the construction strip are not to be removed or damaged by the contractor.
- Contractor shall remove trees, stumps and roots along line of excavation. Payment for such removal shall be included in the unit price bid for construction of the main.
- All water mains to be D.I.P. Class 52 unless otherwise noted.
- Top of all water mains to have a minimum of 3'-1/2' cover unless otherwise noted.
- Valves adjacent to trees shall be strapped to trees.
- All fittings shall be buttressed or anchored with concrete in accordance with the Standard Details unless otherwise provided for on the drawings.
- Fire hydrants shall be set to the bury line elevations shown on the drawings. All fire hydrants shall be restrained and buttressed with concrete in accordance with standard details. Soil around the fire hydrant shall be compacted in accordance with section 1000 and 1005 of the Standard Specifications.
- The contractor shall not operate any water main valves on the existing water system.
- All water house connections shall be for inside meter setting unless otherwise noted on plans or in specifications.
- Force mains shall be D.I.P. only.
- House(s) with the symbol "C.N.S." indicates that cellar cannot be served.
- Contractor is solely responsible for construction means, methods, techniques, sequences, procedures, and safety precautions and programs.
- The fire hydrant shall be installed as per standard detail M.1.11.
- Fire hydrants will be located 3' FROM BACK OF CURB unless otherwise noted.
- For sprinkler systems, all townhomes or multi-family dwelling units should have a minimum of 1" connection with a 3/4" meter.
- The contractor shall notify the Bureau of Highways, Howard County, at (410) 313-7450 at least five (5) working days before any open cut of any county road or boring/jacking operation in county roads for laying water/sewer mains or house connections. The approval of these drawings will constitute compliance with DPM requirements per Section 18.114(a) of the Howard County Code.
- Howard County DPM is hereby granted permission to access private lots shown on these plans in order to maintain public water and sewer house connections at the curb stops and/or cleanouts.


N:\PROJECT\98293\WS1 Thu Dec 31 11:41:16 1998 RIEMER MUEGGE & ASSOCIATES, INC.

DEPARTMENT OF PUBLIC WORKS HOWARD COUNTY, MARYLAND <i>John R. Plummer</i> 1-12-99 CHIEF, BUREAU OF UTILITIES DATE	DEPARTMENT OF PLANNING & ZONING HOWARD COUNTY, MARYLAND <i>Arthur Muegge</i> 1/14/99 CHIEF, DEVELOPMENT ENGINEERING DIVISION DATE	RIEMER MUEGGE & ASSOCIATES, INC. ENGINEERING • ENVIRONMENTAL SERVICES • PLANNING • SURVEYING 8818 Centre Park Drive, Columbia, Maryland 21045 tel 410.997.8900 fax 410.997.9282 98293 WSI.DWG ARTHUR MUEGGE # 8707	DES: CJR DRN: DRD CHK: DATE: 12/31/98 BY NO. REVISION DATE	PLAN OF WATER MAIN 600' SCALE MAP NO. 24 BLOCK NO. 5	E-Z STORAGE, ELLICOTT CITY TAX MAP 24, BLOCK 5, PARCEL 1011 PARCEL C-2 2nd ELECTION DISTRICT HOWARD COUNTY, MARYLAND CONTRACT 44-3742-D SCALE AS SHOWN SHEET 1 OF 2
--	--	---	--	---	--



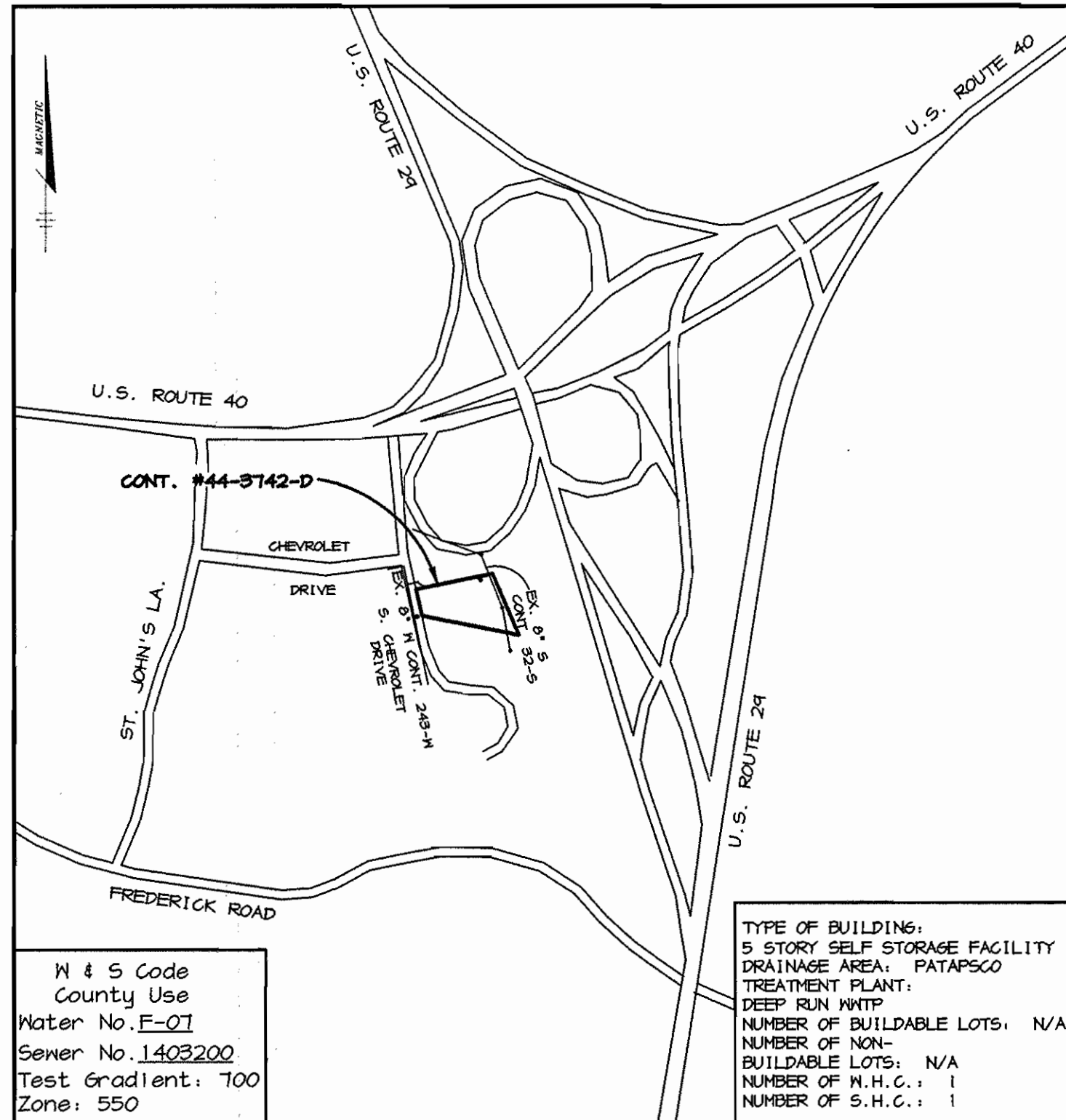
WATER PROFILE
SCALE:
HOR. 1"=50'
VERT. 1"=5'

M:\PROJECT\98293\WSE2 Thu Dec 31 11:23:27 1998 RIEMER MUEGGE & ASSOCIATES, INC.

DEPARTMENT OF PUBLIC WORKS HOWARD COUNTY, MARYLAND <i>Robert Danner</i> CHIEF, BUREAU OF UTILITIES 1-12-99 DATE	DEPARTMENT OF PLANNING & ZONING HOWARD COUNTY, MARYLAND <i>Arthur E. Muegge</i> CHIEF, DEVELOPMENT ENGINEERING DIVISION 1/14/99 DATE	RIEMER MUEGGE & ASSOCIATES, INC. <small>ENGINEERING • ENVIRONMENTAL SERVICES • PLANNING • SURVEYING</small> 8818 Centre Park Drive, Columbia, Maryland 21045 tel 410.997.8900 fax 410.997.9282 98293 WSE.DWG	 ARTHUR E. MUEGGE # 8707	<table border="1"> <tr> <td>DES:</td> <td>CJR</td> </tr> <tr> <td>DRN:</td> <td>DRD</td> </tr> <tr> <td>CHK:</td> <td></td> </tr> <tr> <td>DATE:</td> <td>12/31/98</td> </tr> <tr> <td>BY:</td> <td>NO.</td> </tr> <tr> <td>REVISION:</td> <td></td> </tr> <tr> <td>DATE:</td> <td></td> </tr> </table>	DES:	CJR	DRN:	DRD	CHK:		DATE:	12/31/98	BY:	NO.	REVISION:		DATE:		PROFILE OF WATER MAIN 600' SCALE MAP NO. 24 BLOCK NO. 5	E-Z STORAGE, ELLICOTT CITY TAX MAP 24, BLOCK 5, PARCEL 1011 LOT C-2 2nd ELECTION DISTRICT HOWARD COUNTY, MARYLAND CONTRACT 44-3742-D	SCALE AS SHOWN SHEET 2 OF 2
DES:	CJR																				
DRN:	DRD																				
CHK:																					
DATE:	12/31/98																				
BY:	NO.																				
REVISION:																					
DATE:																					

E-Z STORAGE ELLICOTT CITY

CONTRACT NO. 44-3742-D



M & S Code
County Use
Water No. F-07
Sewer No. 1402200
Test Gradient: 700
Zone: 550

TYPE OF BUILDING:
5 STORY SELF STORAGE FACILITY
DRAINAGE AREA: PATAPSCO
TREATMENT PLANT:
DEEP RUN WWTP
NUMBER OF BUILDABLE LOTS: N/A
NUMBER OF NON-BUILDABLE LOTS: N/A
NUMBER OF N.H.C.: 1
NUMBER OF S.H.C.: 1

VICINITY MAP

SCALE: 1"=600'

BENCHMARKS

HO. CO. SURVEY CONTROL
STATION: 24B3
N 506,661 E 1,359,226

HO. CO. SURVEY CONTROL
STATION: 24B5
N 506,956 E 1,356,571

QUANTITIES

ITEMS	QUANTITIES ESTIMATED	AS-BUILT		
		QUANTITIES	TYPE	MANUFACTURER / SUPPLIER
8" WATER	237 LF			
6" WATER	29 LF			
FIRE HYDRANTS	1 EA.			
8" 1/16 HB	1 EA.			
6" VALVES	2 EA.			
8" X 6" T	2 EA.			

NAME OF UTILITY CONTRACTOR:

Sediment control measures for this contract will be implemented in accordance with Section 219 of the Specifications and as shown on SDP-99-36

CHECKBOX
AS-BUILT DATE
SURVEY AND DRAFTING DIVISION

Review for Howard Soil Conservation District and meets technical requirements.

Cheryl Simman
NATURAL RESOURCES CONSERVATION SERVICE
1/13/99
DATE

This plan is approved for soil erosion and sediment control by the Howard Soil Conservation District.

John P. Blanton
HOWARD SOIL CONSERVATION DISTRICT
1/13/99
DATE

DEPARTMENT OF PUBLIC WORKS
HOWARD COUNTY, MARYLAND

DEPARTMENT OF PLANNING & ZONING
HOWARD COUNTY, MARYLAND

RIEMER MUEGGE & ASSOCIATES, INC.
ENGINEERING • ENVIRONMENTAL SERVICES • PLANNING • SURVEYING
8818 Centre Park Drive, Columbia, Maryland 21045
tel 410.997.8900 fax 410.997.9282
98298 WSI.DWG



DES:	CJR				
DRN:	DRD				
CHK:					
DATE:	12/31/98				
BY:					
NO.:					
REVISION:					
DATE:	12/31/98				
NO.:	1	REV. PRIVATE SHC PER SDP-99-36			4-8-99

PLAN OF WATER MAIN

600' SCALE MAP NO. 24 BLOCK NO. 5

E-Z STORAGE, ELLICOTT CITY
TAX MAP 24, BLOCK 5, PARCEL 1011
PARCEL C-2
2nd ELECTION DISTRICT
HOWARD COUNTY, MARYLAND
CONTRACT 44-3742-D

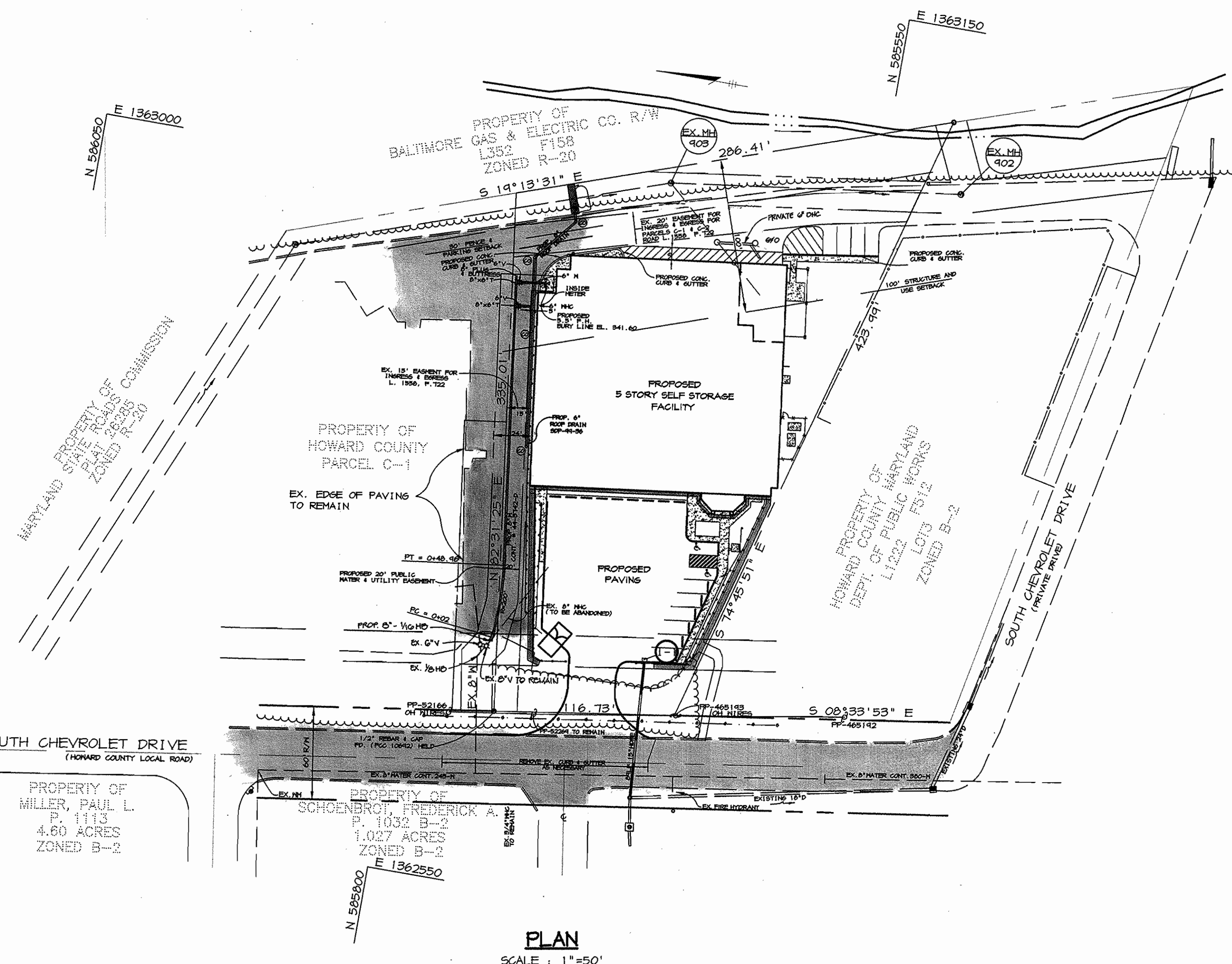
SCALE AS SHOWN

SHEET 1 OF 2

GENERAL NOTES

- Approximate location of existing mains are shown. The contractor shall take all necessary precautions to protect existing mains and services and maintain uninterrupted supply. Any damage incurred shall be repaired immediately to the satisfaction of the Engineer at the Contractor's expense.
- All horizontal controls are based on Maryland State Coordinates.
- All vertical controls are based on U.S.G.S. data.
- All pipe elevations shown are invert elevations.
- Clear all utilities by a minimum of 6". Clear all poles by 2'-0" minimum or tunnel as required. The owner has contacted the utility companies and has made arrangements for bracing of poles as shown on the drawings. In the event the contractor's work requires the bracing of additional poles, any cost incurred by the owner for bracing of additional poles or damages shall be deducted from money owed the contractor. The contractor shall coordinate with the utility companies to schedule the bracing of the poles.
- For details not shown on the drawings, and for materials and construction methods use Howard County Design Manual, Volume IV, Standard Specifications and Detail for Construction. (Latest Edition). The contractor shall have a copy of Volume IV on the job.
- Where test pits have been made on existing utilities, they are noted by the symbol at the location of the test pit. A note or notes containing the results of the test pit or pits is included on the drawings. Existing utilities in the vicinity of the proposed work for which test pits have not been dug shall be located by the contractor two weeks in advance of construction operations at his own expense.
- Contractor shall notify the following utility companies or agencies at least five working days before starting work shown on these plans:

State Highway Administration	531-5533
Baltimore Gas & Electric Co. Contractor Services	950-4620
Baltimore Gas & Electric Co. Underground Damage Control	781-4069
Miss Utility	1-800-251-7177
Colonial Pipeline Co.	785-1340
Bureau of Utilities, Howard County Department of Public Works	313-4400
- Trees and shrubs are to be protected from damage to maximum extent. Trees and shrubs located within the construction strip are not to be removed or damaged by the contractor.
- Contractor shall remove trees, stumps and roots along line of excavation. Payment for such removal shall be included in the unit price bid for construction of the main.
- All water mains to be D.I.P. Class 52 unless otherwise noted.
- Tops of all water mains to have a minimum of 3-1/2' cover unless otherwise noted.
- Valves adjacent to tees shall be strapped to tees.
- All fittings shall be buttressed or anchored with concrete in accordance with the Standard Details unless otherwise provided for on the drawings.
- Fire hydrants shall be set to the bury line elevations shown on the drawings. All fire hydrants shall be restrained and buttressed with concrete in accordance with Standard Details. Soil around the fire hydrant shall be compacted in accordance with Section 1000 and 1005 of the Standard Specifications.
- The contractor shall not operate any water main valves on the existing water system.
- All water house connections shall be for inside meter setting unless otherwise noted on plans or in specifications.
- Force mains shall be D.I.P. only.
- House(s) with the symbol "C.N.S." indicates that cellar cannot be served.
- Contractor is solely responsible for construction means, methods, techniques, sequences, procedures, and safety precautions and programs.
- The fire hydrant shall be installed as per standard detail K.1.11.
- Fire hydrants will be located 3' FROM BACK OF CURB unless otherwise noted.
- For sprinkler systems, all townhomes or multi-family dwelling units should have a minimum of 1" connection with a 3/4" meter.
- The contractor shall notify the Bureau of Highways, Howard County, at (410) 313-7450 at least five (5) working days before any open cut of any County road or boring/jacking operation in County roads for laying water/sewer mains or house connections. The approval of these drawings will constitute compliance with DPM requirements per Section 18.114(a) of the Howard County Code.
- Howard County DPM is hereby granted permission to access private lots shown on these plans in order to maintain public water and sewer house connections at the curb stops and/or cleanouts.

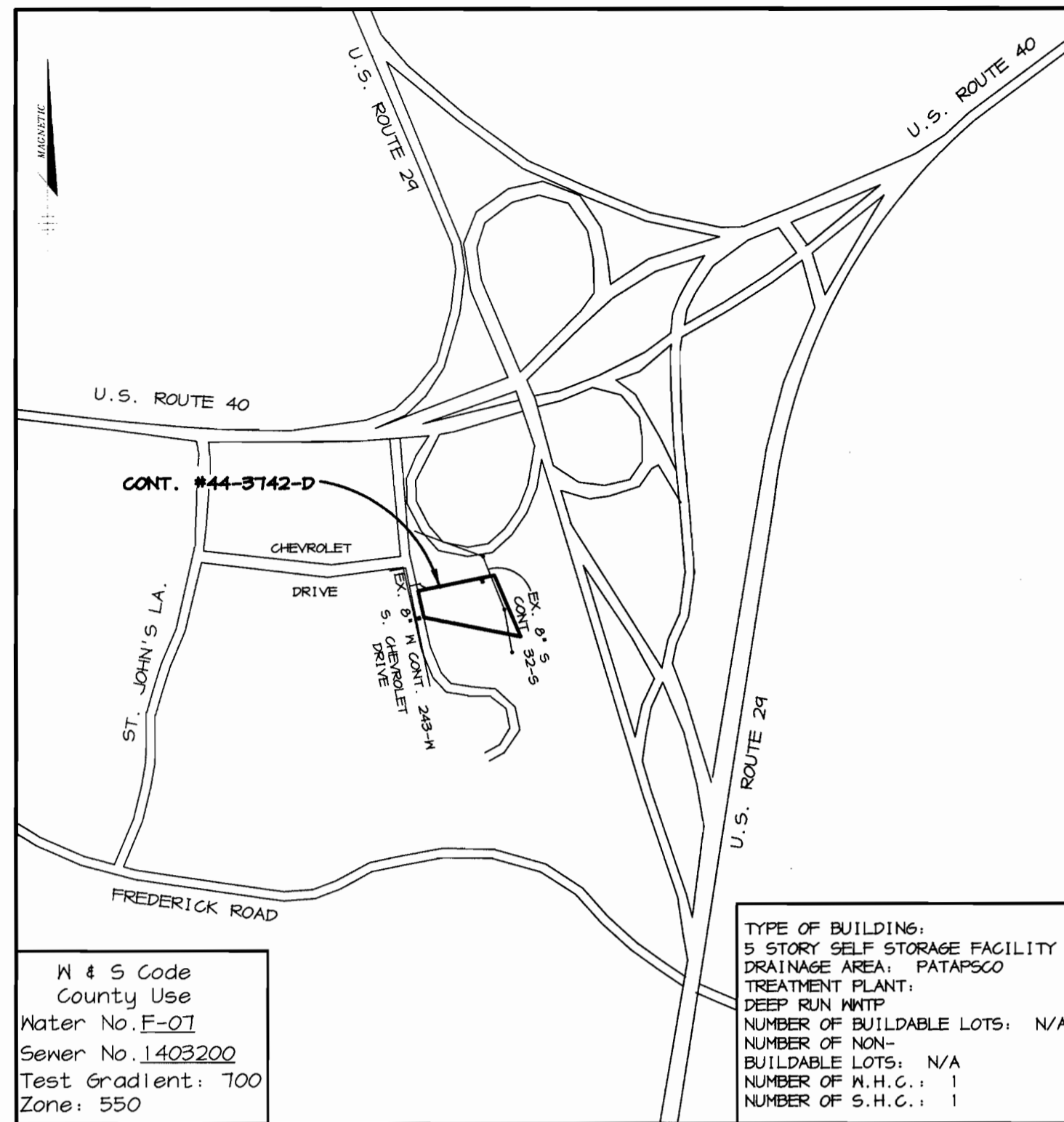


PLAN
SCALE: 1"=50'

H:\PROJECT\08293\WSI Thu Dec 31 11:41:16 1998 RIEMER MUEGGE & ASSOCIATES, INC.

E-Z STORAGE ELLICOTT CITY

CONTRACT NO. 44-3742-D



VICINITY MAP

SCALE: 1"=600'

BENCHMARKS

HO. CO. SURVEY CONTROL STATION: 24B3
N 506,661 E 1,359,226

HO. CO. SURVEY CONTROL STATION: 24B5
N 506,956 E 1,356,571

QUANTITIES

ITEMS	QUANTITIES ESTIMATED	AS-BUILT		
		QUANTITIES	TYPE	MANUFACTURER / SUPPLIER
8" WATER	237 LF	243 LF	CL 52 P.I.P.	ATLANTIC STATES
6" WATER	29 LF	26 LF	CL 52 P.I.P.	ATLANTIC STATES
FIRE HYDRANTS	1 EA.	1	CENTURION	MUELLER
8" 1/16 HB	1 EA.	2	M. J.	ATLANTIC STATES
6" VALVES	2 EA.	2	RES. WEOQE	MUELLER
8" X 6" T	2 EA.	2	M. J.	ATLANTIC STATES

NAME OF UTILITY CONTRACTOR: LACO BOUI SITE SPECIALISTS

Sediment control measures for this contract will be implemented in accordance with Section 219 of the Specifications and as shown on SDP-99-36

Review for Howard Soil Conservation District and meets technical requirements.

Cheryl Simmon 1/13/99
NATURAL RESOURCES CONSERVATION SERVICE DATE

This plan is approved for soil erosion and sediment control by the Howard Soil Conservation District.

John P. Rutter 1/13/99
HOWARD SOIL CONSERVATION DISTRICT DATE

DEPARTMENT OF PUBLIC WORKS
HOWARD COUNTY, MARYLAND

DEPARTMENT OF PLANNING & ZONING
HOWARD COUNTY, MARYLAND

RIEMER MUEGGE & ASSOCIATES, INC.
ENGINEERING • ENVIRONMENTAL SERVICES • PLANNING • SURVEYING
8818 Centre Park Drive, Columbia, Maryland 21045
tel 410.997.8900 fax 410.997.9282
98293 WSI.DWG

DES: CJR
DRN: DRD
CHK: K.C.I. 2 AS-BUILT CONDITIONS ADDED TO PLAN 2/2/00
R.M.A. 1 REV. PRIVATE SHC PER SDP-99-36 4-8-99
DATE: 12/31/98 BY NO. REVISION DATE

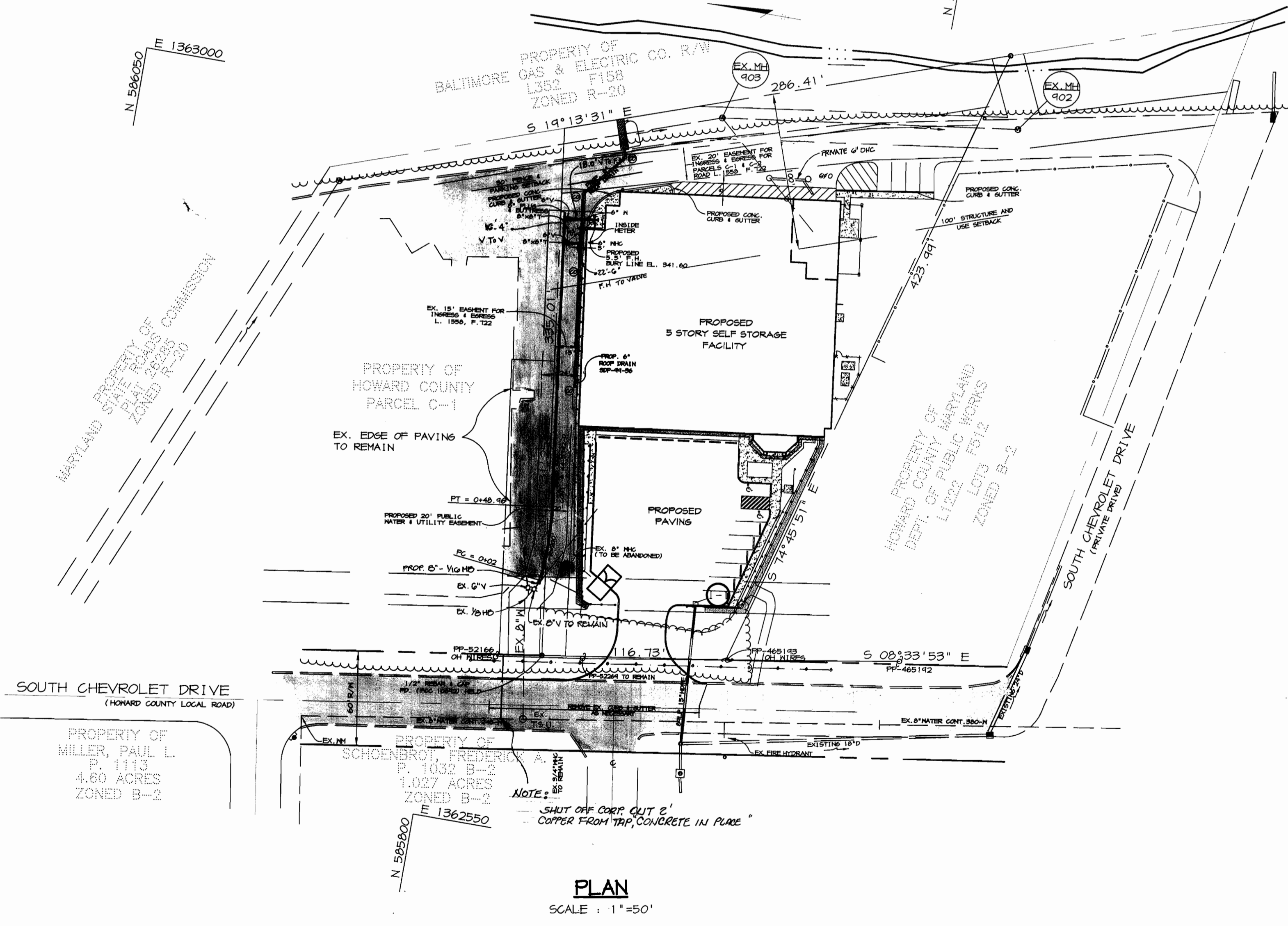
600' SCALE MAP NO. 24 BLOCK NO. 5

E-Z STORAGE, ELLICOTT CITY
TAX MAP 24, BLOCK 5, PARCEL 1011
PARCEL C-2
2nd ELECTION DISTRICT
HOWARD COUNTY, MARYLAND
CONTRACT 44-3742-D

SCALE AS SHOWN
SHEET 1 OF 2

GENERAL NOTES

- Approximate location of existing mains are shown. The contractor shall take all necessary precautions to protect existing mains and services and maintain uninterrupted supply. Any damage incurred shall be repaired immediately to the satisfaction of the Engineer at the Contractor's expense.
- All horizontal controls are based on Maryland State Coordinates.
- All vertical controls are based on U.S.G.S. data.
- All pipe elevations shown are invert elevations.
- Clear all utilities by a minimum of 6". Clear all poles by 2'-0" minimum or tunnel as required. The owner has contacted the utility companies and has made arrangements for bracing of poles as shown on the drawings. In the event the contractor's work requires the bracing of additional poles, any cost incurred by the owner for bracing of additional poles or damages shall be deducted from money owed the contractor. The contractor shall coordinate with the utility companies to schedule the bracing of the poles.
- For details not shown on the drawings, and for materials and construction methods use Howard County Design Manual, Volume IV, Standard Specifications and Detail for Construction (Latest Edition). The contractor shall have a copy of Volume IV on the job.
- Where test pits have been made on existing utilities, they are noted by the symbol [] at the location of the test pit. A note or notes containing the results of the test pit or pits is included on the drawings. Existing utilities in the vicinity of the proposed work for which test pits have not been dug shall be located by the contractor two weeks in advance of construction operations at his own expense.
- Contractor shall notify the following utility companies or agencies at least five working days before starting work shown on these plans.
State Highway Administration 531-5533
Baltimore Gas & Electric Co. Contractor Services 850-4620
Baltimore Gas & Electric Co. Underground Damage Control 787-9068
Miss Utility 1-800-257-7777
Colonial Pipeline Co. 745-1940
Bureau of Utilities, Howard County Department of Public Works 313-4400
- Trees and shrubs are to be protected from damage to maximum extent. Trees and shrubs located within the construction strip are not to be removed or damaged by the contractor.
- Contractor shall remove trees, stumps and roots along line of excavation. Payment for such removal shall be included in the unit price bid for construction of the main.
- All water mains to be D.I.P. Class 52 unless otherwise noted.
- Tops of all water mains to have a minimum of 3'-1/2' cover unless otherwise noted.
- Valves adjacent to tees shall be strapped to tees.
- All fittings shall be buttressed or anchored with concrete in accordance with the Standard Details unless otherwise provided for on the drawings.
- Fire hydrants shall be set to the bury line elevations shown on the drawings. All fire hydrants shall be restrained and buttressed with concrete in accordance with Standard Details. Soil around the fire hydrant shall be compacted in accordance with Section 1000 and 1005 of the Standard Specifications.
- The contractor shall not operate any water main valves on the existing water system.
- All water house connections shall be for inside meter setting unless otherwise noted on plans or in specifications.
- Force mains shall be D.I.P. only.
- House(s) with the symbol "C.N.S." indicates that cellar cannot be served.
- Contractor is solely responsible for construction means, methods, techniques, sequences, procedures, and safety precautions and programs.
- The fire hydrant shall be installed as per standard detail N.1.11.
- Fire hydrants will be located 3' FROM BACK OF CURB unless otherwise noted.
- For sprinkler systems, all townhomes or multi-family dwelling units should have a minimum of 1" connection with a 3/4" meter.
- The contractor shall notify the Bureau of Highways, Howard County, at (410) 313-7450 at least five (5) working days before any open cut of any county road or boring/lacking operation in County roads for laying water/sewer mains or house connections. The approval of these drawings will constitute compliance with DFN requirements per Section 18.114(a) of the Howard County Code.
- Howard County DPN is hereby granted permission to access private lots shown on these plans in order to maintain public water and sewer house connections at the curb stops and/or cleanouts.



PLAN
SCALE: 1"=50'

K:\PROJECT\1992\WSI Thu Dec 31 11:41:16 1998 RIEMER MUEGGE & ASSOCIATES, INC.