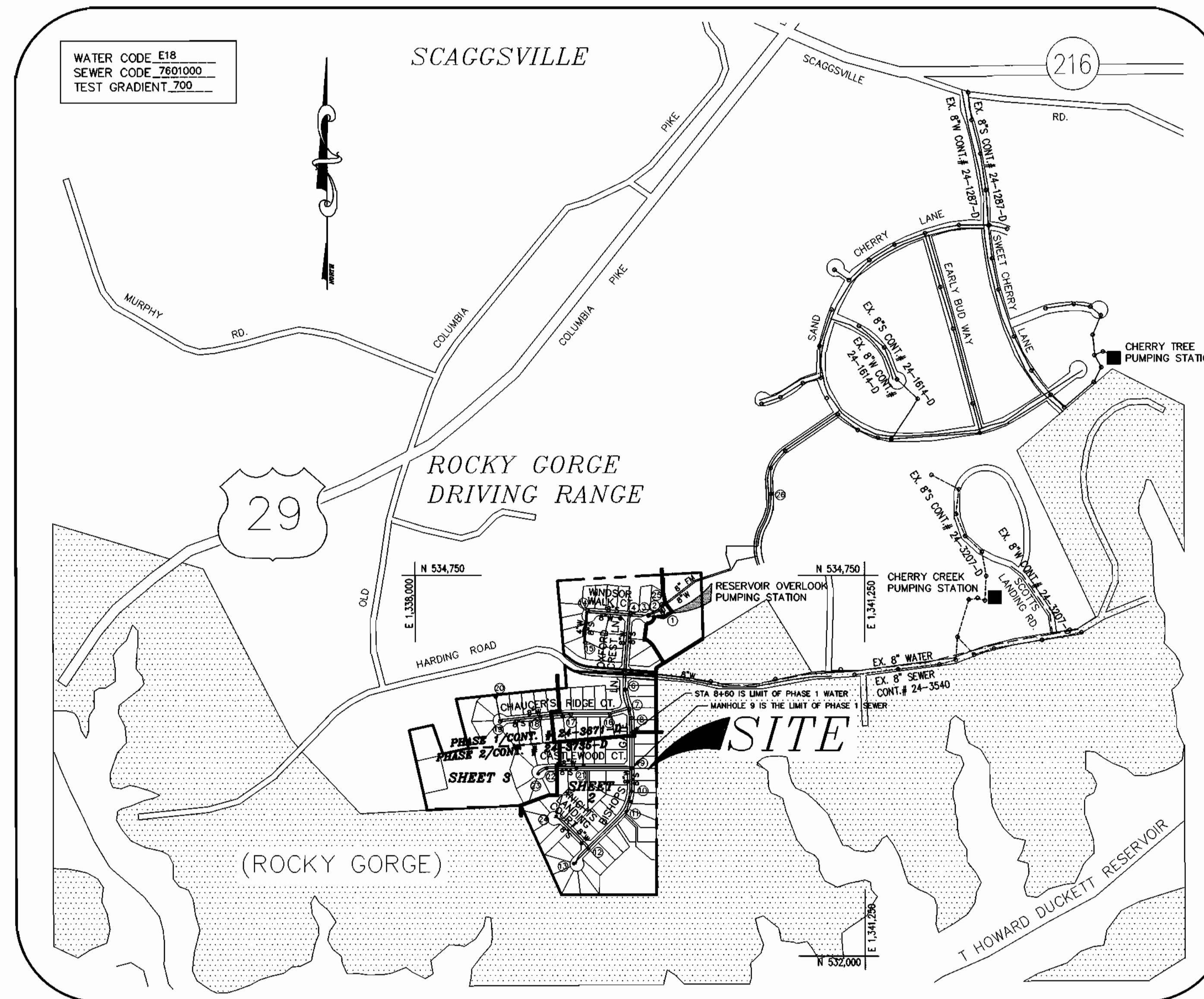


QUANTITY TABLE

ITEMS	QUANTITIES ESTIMATED	QUANTITIES	TYPE	MANUFACTURER/SUPPLIER
STANDARD MH (excluding drops)	4	4		Atlantic Concrete
DROP MH, TYPE "A"	4	4		Atlantic Concrete
INTERMEDIATE LANDING	1	1		Atlantic Concrete
8" SEWER MAIN	1260 L.F.	1259 L.F.	SDR-35	J.M. Manufacturing
8" D.I.P. SEWER MAIN	615 L.F.	615 L.F.	CL-52	Atlantic States
4" SEWER HOUSE CONNECTION	1451 L.F.	1451 L.F.	PVC	Atlantic States
6" SEWER HOUSE CONNECTION	23 L.F.	23 L.F.	SDR-35	J.M. Manufacturing
# TWIN SEWER HOUSE CONNECTIONS	1	0		
# DROP HOUSE CONNECTIONS	24	24		
# SEWER HOUSE CONNECTIONS	14	14		
# MH CONNECTIONS	10	11		
8" WATER	1888 L.F.	1848 L.F.	CL-52	Atlantic States
6" WATER	265 L.F.	315 L.F.	CL-52	
F.H.	5	5	A 423	Mueller
F.H.T. & V.	5	5	MT RS	Mueller
8"x8" T	2	2	MT	Tyler Pipe
8" V	4	4	MT RS	Mueller
6" CAP & BUTTRESS	3	3	1/2 Solid	Tyler Pipe
# WHC (1")	8	8	15000	Mueller
# TWHC (1 1/2" x 1")	23	23	Ball Valve	Mueller
1" WHC	489 L.F.	671	K	Cambridge-Lee
1 1/2" WHC	739 L.F.	634	K	Cambridge-Lee
1" AIR RELEASE MH	1	1		Atlantic Conc./Pagler
6" REDUCER	3	3	MT	Tyler Pipe
1/32 HB	1	0		
1/8 HB	3	3	MJ	Tyler Pipe

NAME OF UTILITY CONTRACTOR: **GAINES**
 SURVEY AND DRAFTING DIVISION AS-BUILT DATE



VICINITY MAP

SCALE : 1" = 600'

TYPE OF BUILDING	SFD
No. OF UNITS	54
No. OF WATER HOUSE CONNECTION	54
No. OF SEWER HOUSE CONNECTIONS	50
DRAINAGE AREA	LITTLE PATUXENT
TREATMENT PLANT	LITTLE PATUXENT WATER RECLAMATION PLANT

GENERAL NOTES

- APPROXIMATE LOCATION OF EXISTING MAINS ARE SHOWN. THE CONTRACTOR SHALL TAKE ALL NECESSARY PRECAUTIONS TO PROTECT EXISTING MAINS AND SERVICES AND MAINTAIN UNINTERRUPTED SUPPLY. ANY DAMAGE INCURRED SHALL BE REPAIRED IMMEDIATELY TO THE SATISFACTION OF THE ENGINEER AT THE CONTRACTOR'S EXPENSE.
- ALL HORIZONTAL CONTROLS ARE BASED ON MARYLAND STATE COORDINATES.
- ALL VERTICAL CONTROLS ARE BASED ON U.S.G.S. DATA.
- ALL PIPE ELEVATIONS SHOWN ARE INVERT ELEVATIONS.
- CLEAR ALL UTILITIES BY A MINIMUM OF 6". CLEAR ALL POLES BY 2'-0" MINIMUM OR TUNNEL AS REQUIRED. THE OWNER HAS CONTACTED THE UTILITY COMPANIES AND HAS MADE ARRANGEMENTS FOR BRACING OF POLES AS SHOWN ON THE DRAWINGS. IN THE EVENT THE CONTRACTOR'S WORK REQUIRES THE BRACING OF ADDITIONAL POLES, ANY COST INCURRED BY THE OWNER FOR BRACING OF ADDITIONAL POLES OR DAMAGES SHALL BE DEDUCTED FROM MONEY OWED THE CONTRACTOR. THE CONTRACTOR SHALL COORDINATE WITH THE UTILITY COMPANIES TO SCHEDULE THE BRACING OF THE POLES.
- FOR DETAILS NOT SHOWN ON THE DRAWINGS, AND FOR MATERIALS AND CONSTRUCTION METHODS USE HOWARD COUNTY DESIGN MANUAL, VOLUME IV, STANDARD SPECIFICATIONS AND DETAIL FOR CONSTRUCTION (LATEST EDITION). THE CONTRACTOR SHALL HAVE A COPY OF VOLUME IV ON THE JOB.
- WHERE TEST PITS HAVE BEEN MADE ON EXISTING UTILITIES, THEY ARE NOTED BY THE SYMBOL AT THE LOCATION OF THE TEST PIT. A NOTE OR NOTES CONTAINING THE RESULTS OF THE TEST PIT OR PITS IS INCLUDED ON THE DRAWINGS. EXISTING UTILITIES IN THE VICINITY OF THE PROPOSED WORK FOR WHICH TEST PITS HAVE NOT BEEN DUG SHALL BE LOCATED BY THE CONTRACTOR TWO WEEKS IN ADVANCE OF CONSTRUCTION OPERATIONS AT HIS OWN EXPENSE.
- CONTRACTOR SHALL NOTIFY THE FOLLOWING UTILITY COMPANIES OR AGENCIES AT LEAST FIVE WORKING DAYS BEFORE STARTING WORK SHOWN ON THESE PLANS:
 - STATE HIGHWAY ADMINISTRATION (410) 531-5533
 - BG & E CO. CONTRACTOR SERVICES (410) 850-4620
 - BG & E CO. UNDERGROUND DAMAGE CONTROL (410) 787-9068
 - MISS UTILITY 1-800-257-7777
 - COLONIAL PIPELINE CO. (410) 795-1390
 - HOWARD COUNTY DEPARTMENT OF PUBLIC WORKS (410) 313-4900
 - BUREAU OF UTILITIES (410) 313-4900
- TREES AND SHRUBS ARE TO BE PROTECTED FROM DAMAGE TO THE MAXIMUM EXTENT. TREES AND SHRUBS LOCATED OUTSIDE THE CONSTRUCTION STRIP ARE NOT TO BE REMOVED OR DAMAGED BY THE CONTRACTOR.
- CONTRACTOR SHALL REMOVE TREES, STUMPS AND ROOTS ALONG LINE OF EXCAVATION. PAYMENT FOR SUCH REMOVAL SHALL BE INCLUDED IN THE UNIT PRICE BID FOR CONSTRUCTION OF THE MAIN.
- ALL WATER MAINS TO BE D.I.P. CLASS 52 UNLESS OTHERWISE NOTED.
- TOPS OF ALL WATER MAINS TO HAVE A MINIMUM OF 3'-1/2" COVER UNLESS OTHERWISE NOTED.
- VALVES ADJACENT TO TEES SHALL BE STRAPPED TO TEES.
- ALL FITTINGS SHALL BE BUTTRESSED OR ANCHORED WITH CONCRETE IN ACCORDANCE WITH THE STANDARD DETAILS UNLESS OTHERWISE PROVIDED FOR ON THE DRAWINGS.
- FIRE HYDRANTS SHALL BE SET TO THE BURY LINE ELEVATIONS SHOWN ON THE DRAWINGS. ALL FIRE HYDRANTS SHALL BE STRAPPED AND BUTTRESSED WITH CONCRETE IN ACCORDANCE WITH STANDARD DETAILS. SOIL AROUND THE FIRE HYDRANT SHALL BE COMPACTED IN ACCORDANCE WITH SECTION 1000 AND 1005 OF THE STANDARD SPECIFICATIONS.
- THE CONTRACTOR SHALL NOT OPERATE ANY WATER MAIN VALVES ON THE EXISTING WATER SYSTEM.
- ALL WATER HOUSE CONNECTIONS SHALL BE FOR INSIDE METER SETTING UNLESS OTHERWISE NOTED ON PLANS OR IN SPECIFICATIONS.
- ALL SEWER MAINS SHALL BE P.V.C. OR D.I.P. UNLESS OTHERWISE NOTED.
- THE CONTRACTOR SHALL PROVIDE A JOINT IN ALL SEWER MAINS WITHIN 2'-0" OF EXTERIOR MANHOLE WALL.
- ALL MANHOLES SHALL BE 4'-0" INSIDE DIAMETER UNLESS OTHERWISE NOTED.
- FORCE MAINS SHALL BE D.I.P. ONLY.
- MANHOLES SHOWN WITH 12" AND 16" WALLS ARE FOR BRICK MANHOLES ONLY.
- MANHOLES DESIGNATED W.T. IN PLAN AND PROFILE SHALL HAVE WATERTIGHT FRAME AND COVERS, STANDARD DETAIL 05.52. WHERE WATERTIGHT MANHOLE FRAME AND COVER IS USED, SET TOP OF FRAME 1' - 6" ABOVE FINISHED GRADE UNLESS OTHERWISE NOTED ON THE DRAWINGS.
- HOUSE(S) WITH THE SYMBOL "C.N.S." INDICATES THAT CELLAR CANNOT BE SERVED.
- ALL WATER METERS TO BE LOCATED INSIDE PROPOSED UNITS.
- STATIONING SHOWN IS WATER MAIN AND CENTER LINE STATIONING.
- ALL CLEANOUTS AND BALL VALVES ARE TO BE LOCATED AT THE WATER, SEWER AND UTILITY EASEMENT LINE.
- CONTRACTOR TO VERIFY THE LOCATION OF ALL EXISTING UTILITIES PRIOR TO COMMENCING CONSTRUCTION.
- ON-SITE SEDIMENT CONTROL TO BE PROVIDED BY F-98-61.
- ALL SEWER HOUSE CONNECTIONS TO BE 4" IN SIZE.
- ALL WATER HOUSE CONNECTIONS TO BE 1" IN SIZE AND TWIN WATER HOUSE CONNECTIONS TO BE 1 1/2" x 1" IN SIZE UNLESS OTHERWISE NOTED.
- ALL CELLARS WILL HAVE SERVICE TO LOWEST FLOOR UNLESS OTHERWISE NOTED.
- THERE WILL BE NO TWIN SEWER HOUSE CONNECTIONS ON SITE UNLESS APPROVED BY HOWARD COUNTY.
- ALL WATER MAINS TO BE 8", 6", OR 4" DIP CLASS 52.
- THE EXISTING WELL AND SEPTIC SERVICING THE EXISTING HOUSE ARE TO BE ABANDONED.
- STORM DRAIN SYSTEM INDICATED FOR INFORMATIONAL PURPOSES ONLY, SEE ROAD PLANS FOR CONSTRUCTION DATA.
- COMPACTION IN FILL AREAS TO BE 95% AS DETERMINED PER AASHTO T-180.
- IF MATERIAL IS WITHIN 8% OF OPTIMUM MOISTURE, WORKING THE MATERIAL UNTIL REQUIRED COMPACTION IS ACHIEVED IS CONTRACTOR'S RESPONSIBILITY.
- THE CONSTRUCTION IS TO BE LIMITED TO THAT WHICH CAN BE BACKFILLED AND STABILIZED IN ANY ONE WORKING DAY.
- APPLICATION WAS APPROVED ON MAY 4, 1998, BY THE MDE NON-TIDAL WETLANDS & WATERWAYS DIVISION FOR THE TEMPORARY DISTURBANCE OF THE WETLANDS, FLOODPLAIN, STREAM, AND THEIR BUFFERS FOR THE INSTALLATION OF A 6" FORCE MAIN AND 8" WATER MAIN UNDER AUTHORIZATION # 97-NI-0052/199761555.

Reviewed for **HOWARD** S.C.D.
 Name
 and meets Technical Requirements
 Signature *[Signature]* Date *11/19/99*
 USA, NATURAL RESOURCES CONSV. SERVICE

THIS DEVELOPMENT PLAN IS APPROVED FOR SOIL EROSION AND SEDIMENT CONTROL BY THE HOWARD SOIL CONSERVATION DISTRICT.
 Approved *[Signature]* Date *11/19/99*
 Howard S.C.D.

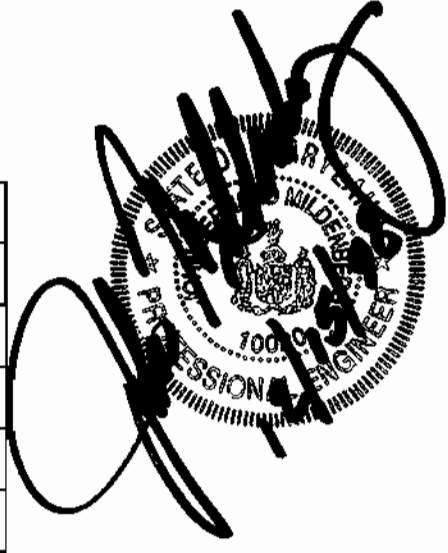
CONTRACT # 24-3735-D
RESERVOIR OVERLOOK
LOTS 29 THRU 83
PHASE 2
WATER AND SEWER MAIN EXTENSIONS
HOWARD COUNTY, MARYLAND
DEPARTMENT OF PUBLIC WORKS

PLAN REFERENCE NUMBERS

F-88-112	P-98-03
S-97-07	F-98-61
WP-97-62	GP-98-99
WP-97-138	CONT. # 24-3671-D

INDEX OF DRAWINGS

NO.	DESCRIPTION
1	TITLE SHEET
2	WATER & SEWER PLAN
3	WATER & SEWER PLAN & PROFILES
4	WATER & SEWER PROFILES
5	SEWER PROFILES



CONTRACT NO.: 24-3735-D
 RESERVOIR OVERLOOK
 WATER AND SEWER MAIN EXTENSIONS
 HOWARD COUNTY, MARYLAND

DEPARTMENT OF PUBLIC WORKS
 HOWARD COUNTY, MARYLAND
 Michael A. Spaniollo for *[Signature]* 12-23-98
 CHIEF, BUREAU OF UTILITIES DATE

DEPARTMENT OF PLANNING & ZONING
 HOWARD COUNTY, MARYLAND
[Signature] 1/5/99
 CHIEF, DEVELOPMENT ENGINEERING DIVISION DATE

MILDENBERG, BOENDER & ASSOC., INC.
 Engineers Planners Surveyors
 5072 Dorsey Hall Drive, Suite 202, Elkridge City, Maryland 21042
 (410) 897-0286 Ball. (301) 621-5521 Wash. (410) 997-0298 Fax

engineering	SJD
illustration	SJD
approval	
project	97084
date	DEC 1998

BY	NO.	REVISION	DATE

TITLE SHEET

RESERVOIR OVERLOOK,
LOTS 29 THRU 83
 CONTRACT # 24-3735-D
 SIXTH ELECTION DISTRICT
 HOWARD COUNTY, MARYLAND

scale
 AS SHOWN
1 OF 5

F:\197084\DWG\FINAL\PH2-1865\84meson2.DWG 12-15-98 7:23:14 am EST

E 1,338,750 N 532,250
 E 1,338,750 N 532,250



BISHOP GATE WHC

LOT	TO	DIST.
LOT 12	TO	51.0
LOT 13	TO	51.0
LOT 14	TO	51.0
LOT 15	TO	51.0
LOT 16	TO	51.0
LOT 17	TO	51.0
LOT 18	TO	51.0
LOT 19	TO	51.0
LOT 20	TO	51.0
LOT 21	TO	51.0
LOT 22	TO	51.0
LOT 23	TO	51.0
LOT 24	TO	51.0
LOT 25	TO	51.0
LOT 26	TO	51.0
LOT 27	TO	51.0
LOT 28	TO	51.0
LOT 29	TO	51.0
LOT 30	TO	51.0
LOT 31	TO	51.0
LOT 32	TO	51.0
LOT 33	TO	51.0
LOT 34	TO	51.0
LOT 35	TO	51.0
LOT 36	TO	51.0
LOT 37	TO	51.0
LOT 38	TO	51.0
LOT 39	TO	51.0
LOT 40	TO	51.0
LOT 41	TO	51.0
LOT 42	TO	51.0
LOT 43	TO	51.0
LOT 44	TO	51.0
LOT 45	TO	51.0
LOT 46	TO	51.0
LOT 47	TO	51.0
LOT 48	TO	51.0
LOT 49	TO	51.0
LOT 50	TO	51.0
LOT 51	TO	51.0
LOT 52	TO	51.0
LOT 53	TO	51.0
LOT 54	TO	51.0
LOT 55	TO	51.0
LOT 56	TO	51.0
LOT 57	TO	51.0
LOT 58	TO	51.0
LOT 59	TO	51.0
LOT 60	TO	51.0
LOT 61	TO	51.0
LOT 62	TO	51.0
LOT 63	TO	51.0
LOT 64	TO	51.0
LOT 65	TO	51.0
LOT 66	TO	51.0
LOT 67	TO	51.0
LOT 68	TO	51.0
LOT 69	TO	51.0
LOT 70	TO	51.0
LOT 71	TO	51.0
LOT 72	TO	51.0
LOT 73	TO	51.0
LOT 74	TO	51.0
LOT 75	TO	51.0
LOT 76	TO	51.0
LOT 77	TO	51.0
LOT 78	TO	51.0
LOT 79	TO	51.0
LOT 80	TO	51.0
LOT 81	TO	51.0
LOT 82	TO	51.0
LOT 83	TO	51.0
LOT 84	TO	51.0
LOT 85	TO	51.0
LOT 86	TO	51.0
LOT 87	TO	51.0
LOT 88	TO	51.0
LOT 89	TO	51.0
LOT 90	TO	51.0
LOT 91	TO	51.0
LOT 92	TO	51.0
LOT 93	TO	51.0
LOT 94	TO	51.0
LOT 95	TO	51.0
LOT 96	TO	51.0
LOT 97	TO	51.0
LOT 98	TO	51.0
LOT 99	TO	51.0
LOT 100	TO	51.0

MANHOLE LOCATION CHART

MH #	ROAD OR NORTHING & EASTING	CL STATION	OFFSET
EX 9	BISHOPS GATE LANE	6+88.83	7.00' LT.
10	BISHOPS GATE LANE	8+56.43	8.20' LT.
11	BISHOPS GATE LANE	10+03.03	17.00' LT.
12	BISHOPS GATE LANE	13+85.76	7.00' LT.
13	BISHOPS GATE LANE	15+27.21	24.37' RT.
21	CASTLEWOOD COURT	3+93.00	7.00' LT.
22	CASTLEWOOD COURT	6+08.80	3.00' LT.
23	CASTLEWOOD COURT	LP +117.17	27.84' RT.
24	KNIGHTS LANDING COURT	3+19.26	16.67' RT.

NOTE: CONTRACTOR TO VERIFY THE LOCATION OF APPURTENANCES WITHIN EASEMENTS.

WATER MAIN TABULATION CHART

BISHOPS GATE LANE

STATION	APPURTENANCE	DIST. FROM E
6+75	8" x 8" T	7' RT.
6+77	8" V	7' RT.
9+29.16	8" x 6" FHT	7' RT.
9+29.16	6" V	5' RT.
9+29.16	FH	16.1' LT.
13+72	8" x 8" T	7' RT.
13+74	8" V	7' RT.
14+32.52	8" x 6" FHT	7' RT.
14+32.52	6" V	9' RT.
14+32.52	FH	16.1' RT.
14+42.52	6" REDUCER	7' RT.
14+92.63	1/8" HB	15.52' RT.
15+13.01	6" C&B	7.9' RT.

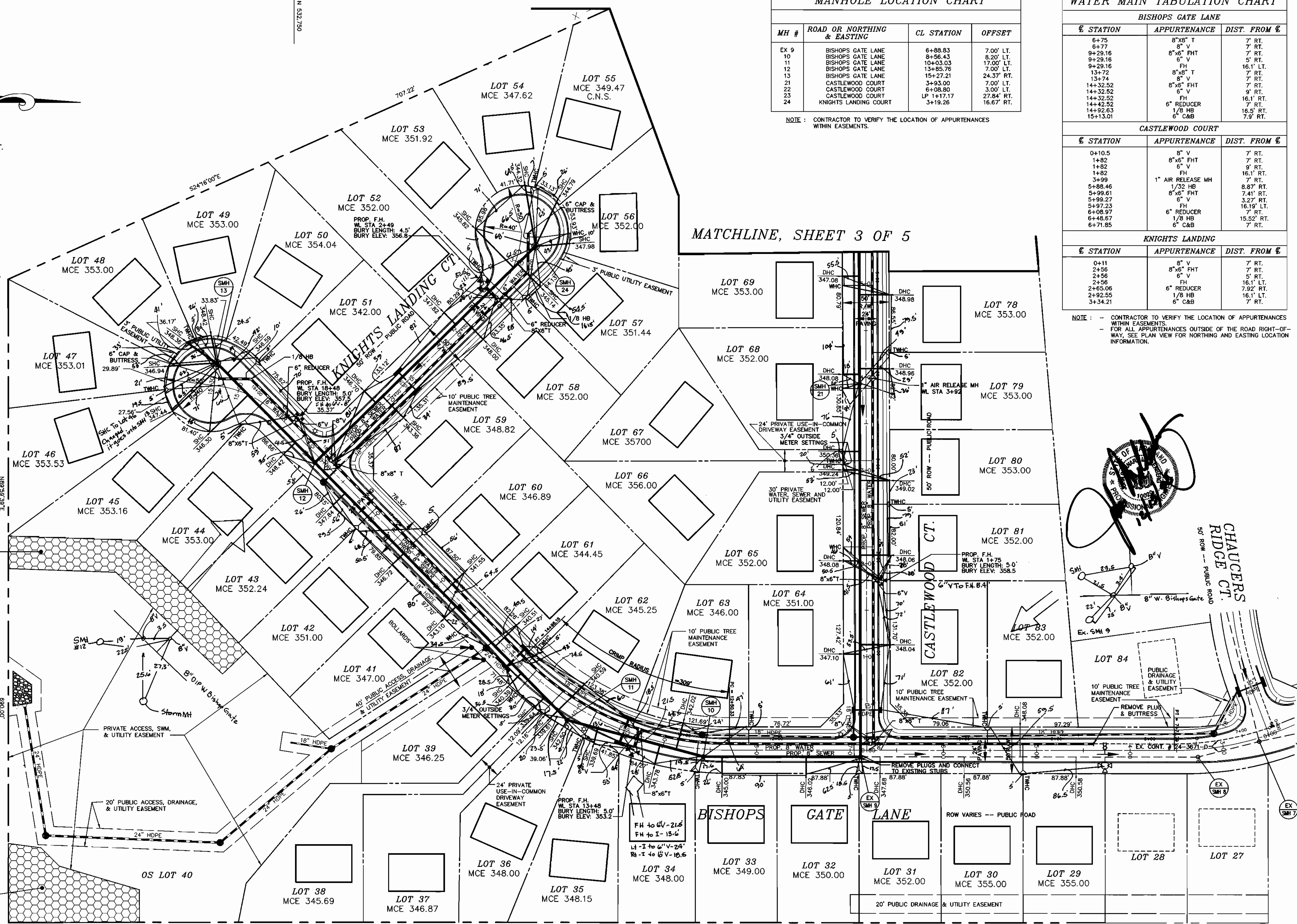
CASTLEWOOD COURT

STATION	APPURTENANCE	DIST. FROM E
0+10.5	8" V	7' RT.
1+82	8" x 6" FHT	7' RT.
1+82	6" V	9' RT.
1+82	FH	16.1' RT.
3+99	1" AIR RELEASE MH	7' RT.
5+88.46	1/32" HB	8.87' RT.
5+99.61	8" x 6" FHT	7.41' RT.
5+99.27	6" V	3.27' RT.
5+97.23	FH	16.19' LT.
6+08.97	6" REDUCER	7' RT.
6+48.87	1/8" HB	15.52' RT.
6+71.85	6" C&B	7' RT.

KNIGHTS LANDING

STATION	APPURTENANCE	DIST. FROM E
0+11	8" V	7' RT.
2+56	8" x 6" FHT	7' RT.
2+56	6" V	5' RT.
2+56	FH	16.1' RT.
2+65.06	6" REDUCER	7.92' RT.
2+92.55	1/8" HB	16.1' LT.
3+34.21	6" C&B	7' RT.

NOTE: CONTRACTOR TO VERIFY THE LOCATION OF APPURTENANCES WITHIN EASEMENTS. FOR ALL APPURTENANCES OUTSIDE OF THE ROAD RIGHT-OF-WAY, SEE PLAN VIEW FOR NORTHING AND EASTING LOCATION INFORMATION.



PLAN REFERENCE NUMBERS

F-88-112	P-98-03
S-97-07	F-98-61
WP-97-62	GP-98-99
WP-97-138	CONT # 24-3671-D

WASH. SUB. SANITARY COMMISSION. 221,774
ROCKY GORGE RESERVOIR
 WATER & SEWER AS-BUILTS

DEPARTMENT OF PUBLIC WORKS
 HOWARD COUNTY, MARYLAND

Michael A. ... 12-22-98
 CHIEF, BUREAU OF UTILITIES

DEPARTMENT OF PLANNING & ZONING
 HOWARD COUNTY, MARYLAND

... 1/5/99
 CHIEF, DEVELOPMENT ENGINEERING DIVISION

MILDENBERG BOENDER & ASSOC., INC.
 Engineers Planners Surveyors
 6072 Dorsey Hall Drive, Suite 202, Elkton City, Maryland 21042
 (410) 997-0286 Bull. (301) 621-5521 Wash. (410) 997-0286 Fax

engineering	SJD
illustration	SJD
approval	
project	97084
date	DEC 1998
BY NO.	KS 1
REVISION	REVISE BURY LENGTH ON CASTLEWOOD
DATE	4/13/99

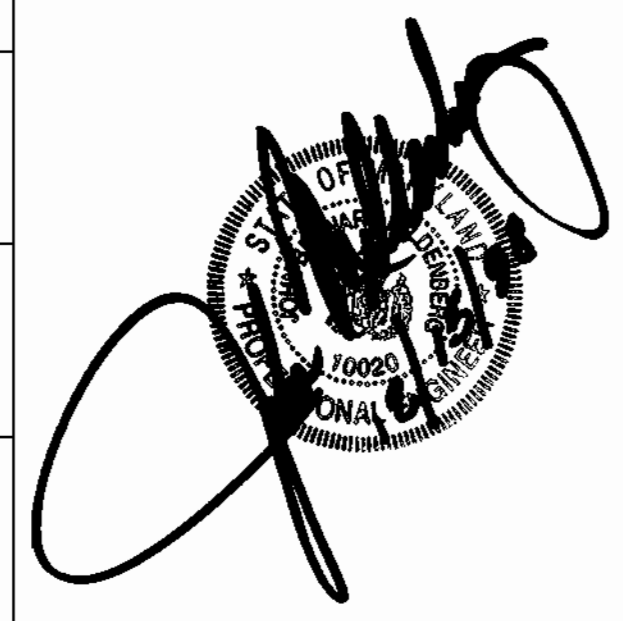
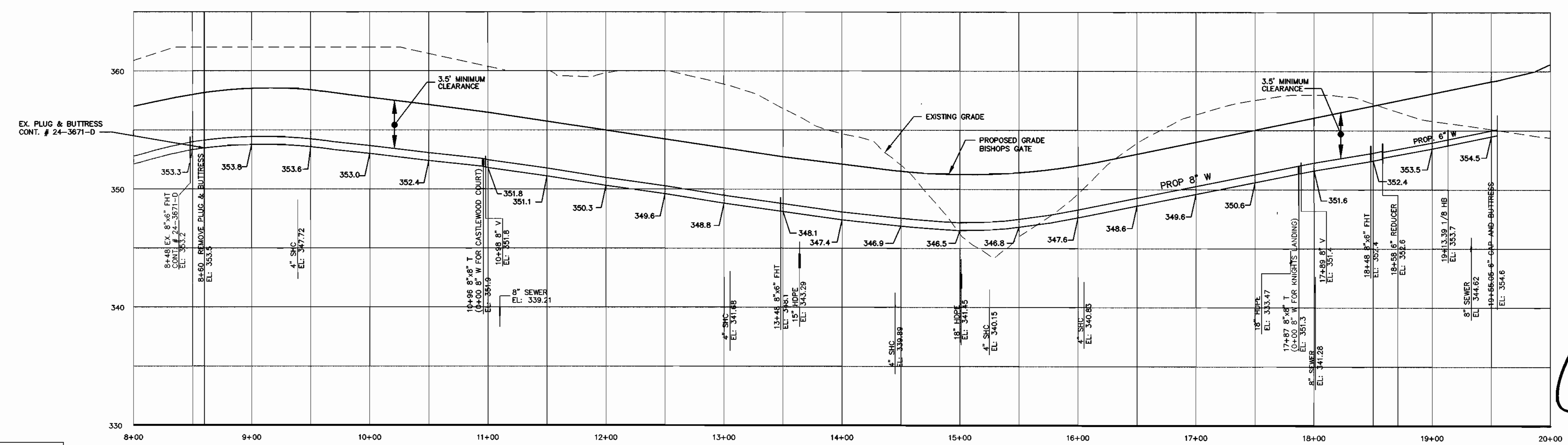
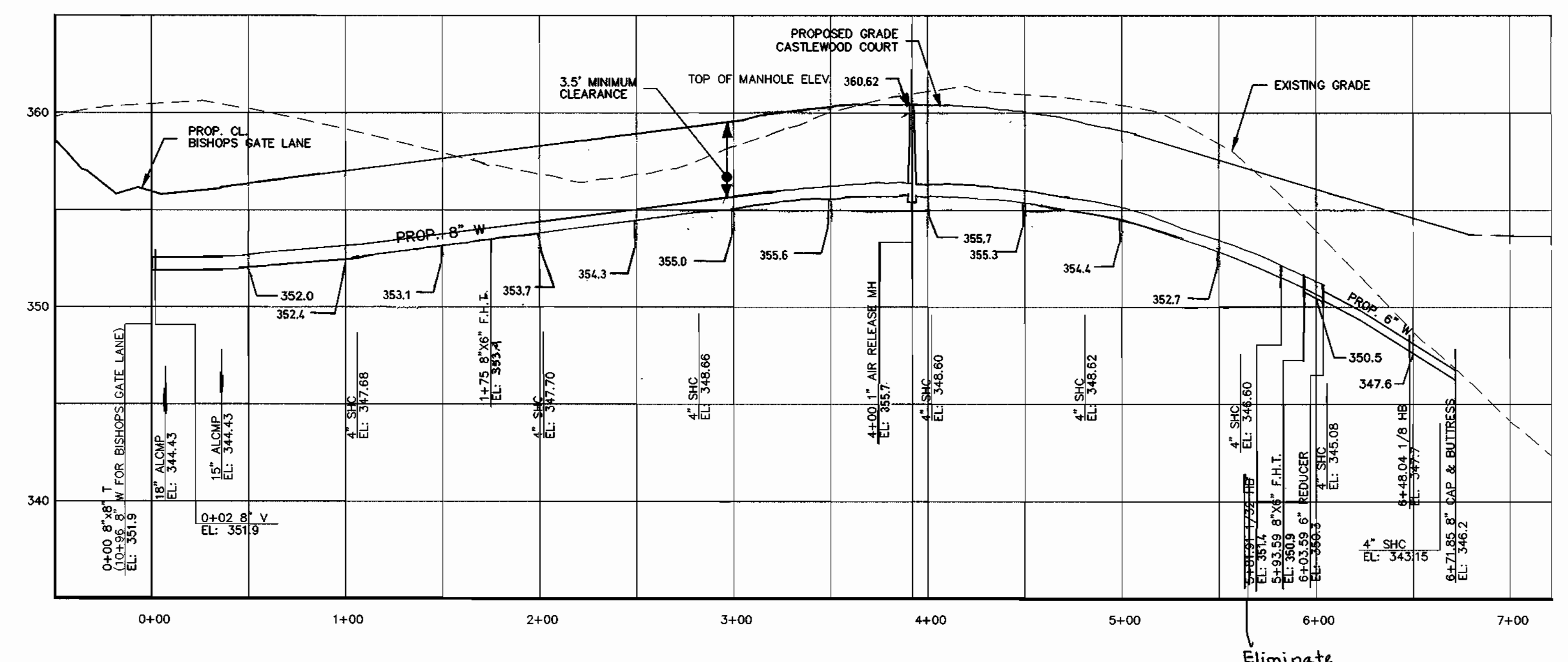
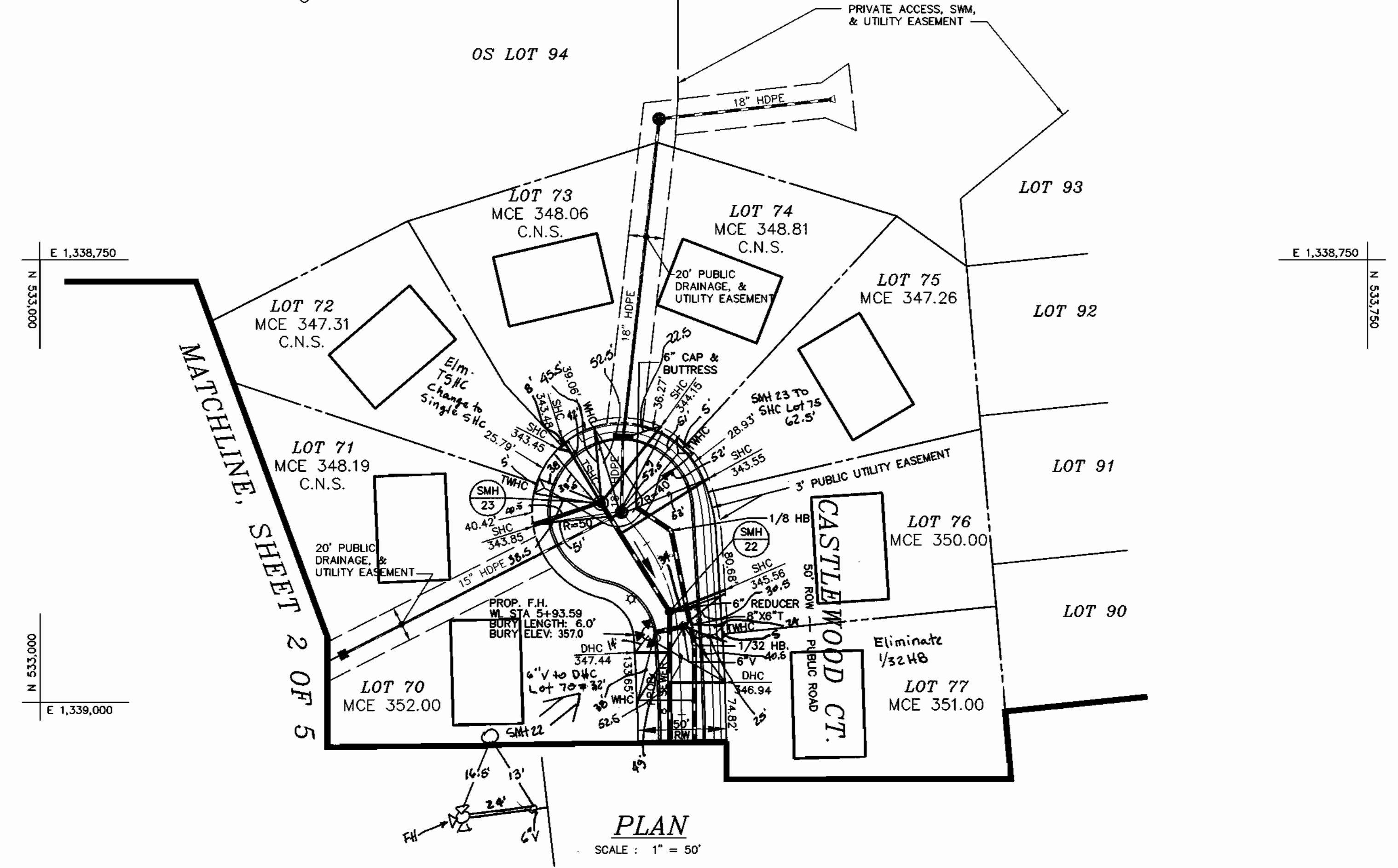
WATER & SEWER PLAN

600' SCALE MAP NO. 46 BLOCK NO. 15 & 16

RESERVOIR OVERLOOK,
 LOTS 29 THRU 83
 CONTRACT # 24-3735-D
 SIXTH ELECTION DISTRICT
 HOWARD COUNTY, MARYLAND

scale 1"=50'
 2 OF 5

F:\197084\DWG\FINAL\PH2-M&S\84-m&2-2.dwg 12-15-98 9:36:43 am EST



PLAN REFERENCE NUMBERS

F-88-112	P-98-03
S-97-07	F-98-61
WP-97-62	GP-98-99
WP-97-138	CONT # 24-3671-D

DEPARTMENT OF PUBLIC WORKS
HOWARD COUNTY, MARYLAND

Richard A. Berman
CHIEF, BUREAU OF UTILITIES RMB DATE 12-23-98

DEPARTMENT OF PLANNING & ZONING
HOWARD COUNTY, MARYLAND

Richard A. Berman
CHIEF, DEVELOPMENT ENGINEERING DIVISION DATE 1/13/99

MILDENBERG, BOENDER & ASSOC., INC.
Engineers Planners Surveyors
5072 Dorsey Hall Drive, Suite 202, Ellicott City, Maryland 21042
(410) 997-0286 Ball. (301) 621-5521 Wash. (410) 997-0286 Fax.

engineering	SJD				
illustration	SJD				
approval					
project	97084	KS	1	REVISE BURY ELEV. OF FH & CASTLEWOOD 8" WATER MAIN	1/13/99
date	DEC 1998	BY	NO.	REVISION	DATE

WATER & SEWER AS-BUILTS

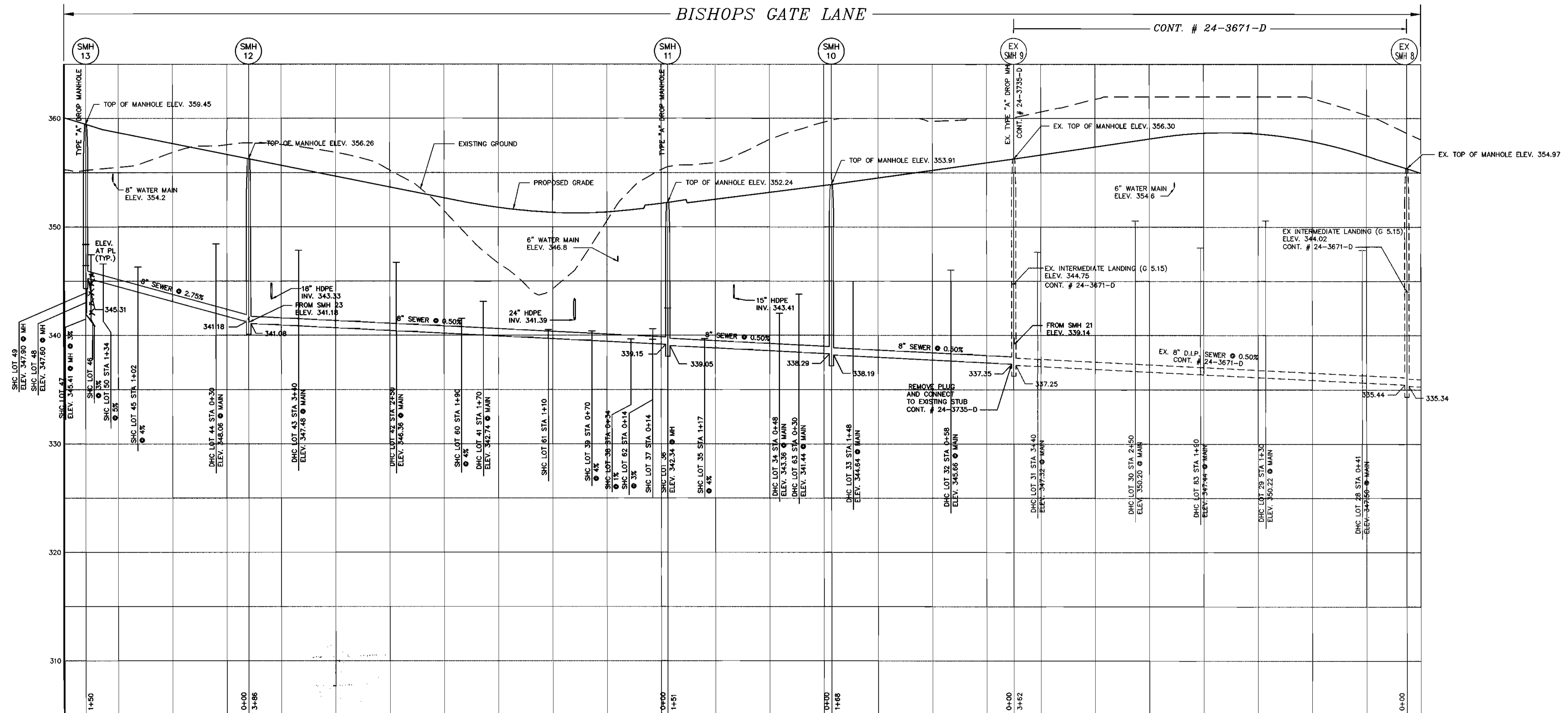
WATER & SEWER PLAN & PROFILES

600' SCALE MAP NO. 46 BLOCK NO. 15 & 16

RESERVOIR OVERLOOK,
LOTS 29 THRU 83
CONTRACT # 24-3735-D
SIXTH ELECTION DISTRICT
HOWARD COUNTY, MARYLAND

scale AS SHOWN
3 OF 5

F:\197084\DWG\FINAL\PH2-W&S\84-ws2-3.dwg 12-15-98 9:33:48 am EST



SEWER PROFILE - SMH 13 TO SMH 6

HORIZONTAL SCALE : 1" = 50'
 VERTICAL SCALE : 1" = 5'



CONTRACT NO.: 24-3735-D
 RESERVOIR OVERLOOK
 WATER AND SEWER MAIN EXTENSIONS
 HOWARD COUNTY, MARYLAND

SEWER AS-BUILTS

DEPARTMENT OF PUBLIC WORKS
 HOWARD COUNTY, MARYLAND
 Michael A. Burnett 12-23-98
 CHIEF, BUREAU OF UTILITIES RMB DATE

DEPARTMENT OF PLANNING & ZONING
 HOWARD COUNTY, MARYLAND
 [Signature] 1/5/99
 CHIEF, DEVELOPMENT ENGINEERING DIVISION DATE

MILDENBERG, BOENDER & ASSOC., INC.
 Engineers Planners Surveyors
 5072 Dorsey Hall Drive, Suite 202, Ellicott City, Maryland 21042
 (410) 997-0296 Bal. (301) 621-5521 Wash. (410) 997-0296 Fax

engineering	SJD				
illustration	SJD				
approval					
project	97084				
date	DEC 1998	BY	NO.	REVISION	DATE

SEWER PROFILES
 600' SCALE MAP NO. 46 BLOCK NO. 15 & 16

RESERVOIR OVERLOOK,
 LOTS 29 THRU 83
 CONTRACT # 24-3735-D
 SIXTH ELECTION DISTRICT
 HOWARD COUNTY, MARYLAND

scale
 AS SHOWN
 5 OF 5

F:\97084\DWG\FINAL\PR2-W&S\94-#52-5.dwg 12-14-98 5:07:12 pm EST

E 1,338,750

E 1,338,750

N 532,250

N 532,250



MANHOLE LOCATION CHART			
MH #	ROAD OR NORTHING & EASTING	CL STATION	OFFSET
EX 9	BISHOPS GATE LANE	6+88.83	7.00' LT.
10	BISHOPS GATE LANE	8+56.43	8.20' LT.
11	BISHOPS GATE LANE	10+03.03	17.00' LT.
12	BISHOPS GATE LANE	13+85.76	7.00' LT.
13	BISHOPS GATE LANE	15+27.21	24.37' RT.
21	CASTLEWOOD COURT	3+93.00	7.00' LT.
22	CASTLEWOOD COURT	6+08.80	3.00' LT.
23	CASTLEWOOD COURT	LP 1+17.17	27.84' RT.
24	KNIGHTS LANDING COURT	3+19.26	16.67' RT.

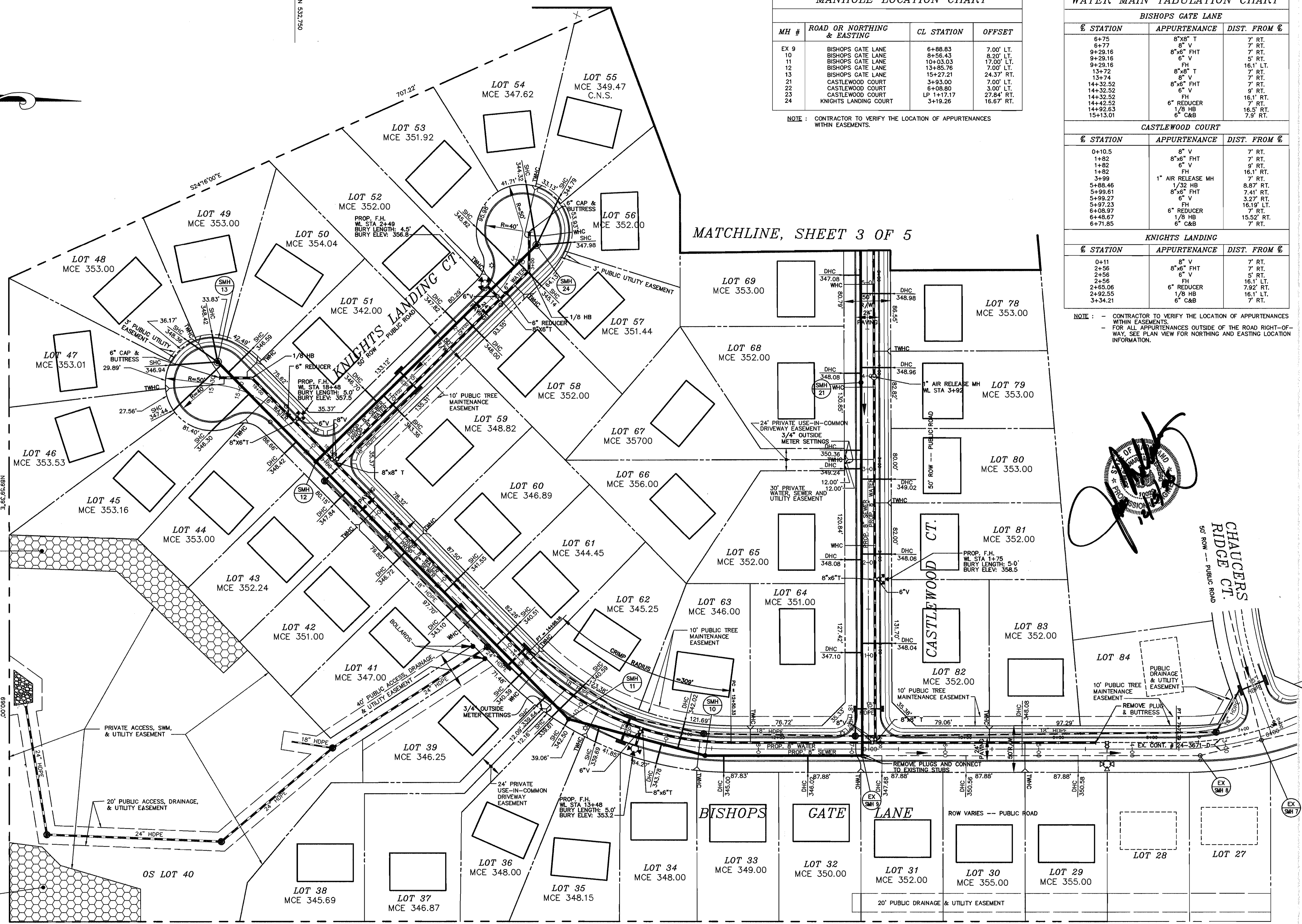
NOTE: CONTRACTOR TO VERIFY THE LOCATION OF APPURTENANCES WITHIN EASEMENTS.

WATER MAIN TABULATION CHART		
BISHOPS GATE LANE		
STATION	APPURTENANCE	DIST. FROM CL
6+75	8"x8" T	7' RT.
6+77	8" V	7' RT.
9+29.16	8"x6" FHT	5' RT.
9+29.16	6" V	5' RT.
9+29.16	FH	16.1' LT.
13+72	8" V	7' RT.
13+74	8"x6" T	7' RT.
14+32.52	8"x6" FHT	7' RT.
14+32.52	6" V	9' RT.
14+32.52	FH	16.1' RT.
14+42.52	6" REDUCER	7' RT.
14+92.63	1/8" HB	16.5' RT.
15+13.01	6" C&B	7.9' RT.

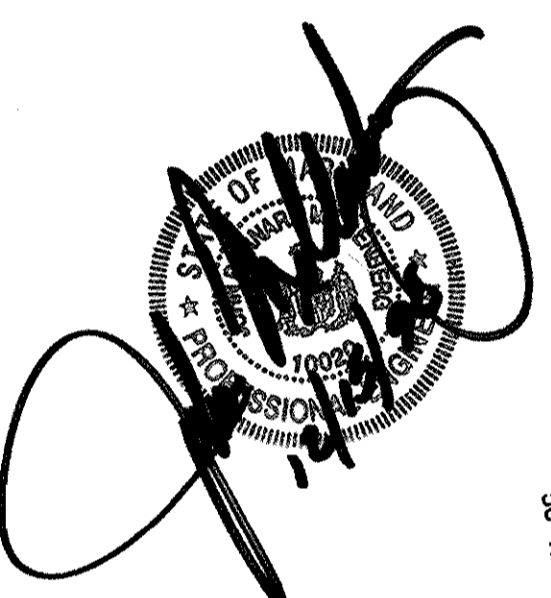
CASTLEWOOD COURT		
STATION	APPURTENANCE	DIST. FROM CL
0+10.5	8" V	7' RT.
1+82	8"x6" FHT	7' RT.
1+82	6" V	9' RT.
1+82	FH	16.1' RT.
3+99	1" AIR RELEASE MH	7' RT.
5+88.46	1/32" HB	8.87' RT.
5+99.61	8"x6" FHT	7.41' RT.
5+99.27	6" V	3.27' RT.
5+97.23	FH	16.19' LT.
6+08.97	6" REDUCER	7' RT.
6+48.67	1/8" HB	15.52' RT.
6+71.85	6" C&B	7' RT.

KNIGHTS LANDING		
STATION	APPURTENANCE	DIST. FROM CL
0+11	8" V	7' RT.
2+56	8"x6" FHT	7' RT.
2+56	6" V	5' LT.
2+56	FH	16.1' RT.
2+65.06	6" REDUCER	7.92' RT.
2+92.55	1/8" HB	16.1' LT.
3+34.21	6" C&B	7' RT.

NOTE: - CONTRACTOR TO VERIFY THE LOCATION OF APPURTENANCES WITHIN EASEMENTS.
- FOR ALL APPURTENANCES OUTSIDE OF THE ROAD RIGHT-OF-WAY, SEE PLAN VIEW FOR NORTHING AND EASTING LOCATION INFORMATION.



MATCHLINE, SHEET 3 OF 5



PLAN REFERENCE NUMBERS	
F-88-112	P-98-03
S-97-07	F-98-61
WP-97-62	GP-98-99
WP-97-138	CONT # 24-3671-D

WASH. SUB. SANITARY COMMISSION. 221/74

ROCKY GORGE RESERVOIR

CONTRACT NO.: 24-3735-D
RESERVOIR OVERLOOK
WATER AND SEWER MAIN EXTENSIONS
HOWARD COUNTY, MARYLAND

DEPARTMENT OF PUBLIC WORKS
HOWARD COUNTY, MARYLAND

DEPARTMENT OF PLANNING & ZONING
HOWARD COUNTY, MARYLAND

MILDENBERG, BOENDER & ASSOC., INC.
Engineers Planners Surveyors

5072 Dorsey Hall Drive, Suite 202, Ellicott City, Maryland 21042
(410) 937-0296 Fax (301) 821-5521 Wash. (410) 937-0298 Fax

Michael A. D'Amico
CHIEF, BUREAU OF UTILITIES
DATE 12-23-98

Michael A. D'Amico
CHIEF, DEVELOPMENT ENGINEERING DIVISION
DATE 1/5/99

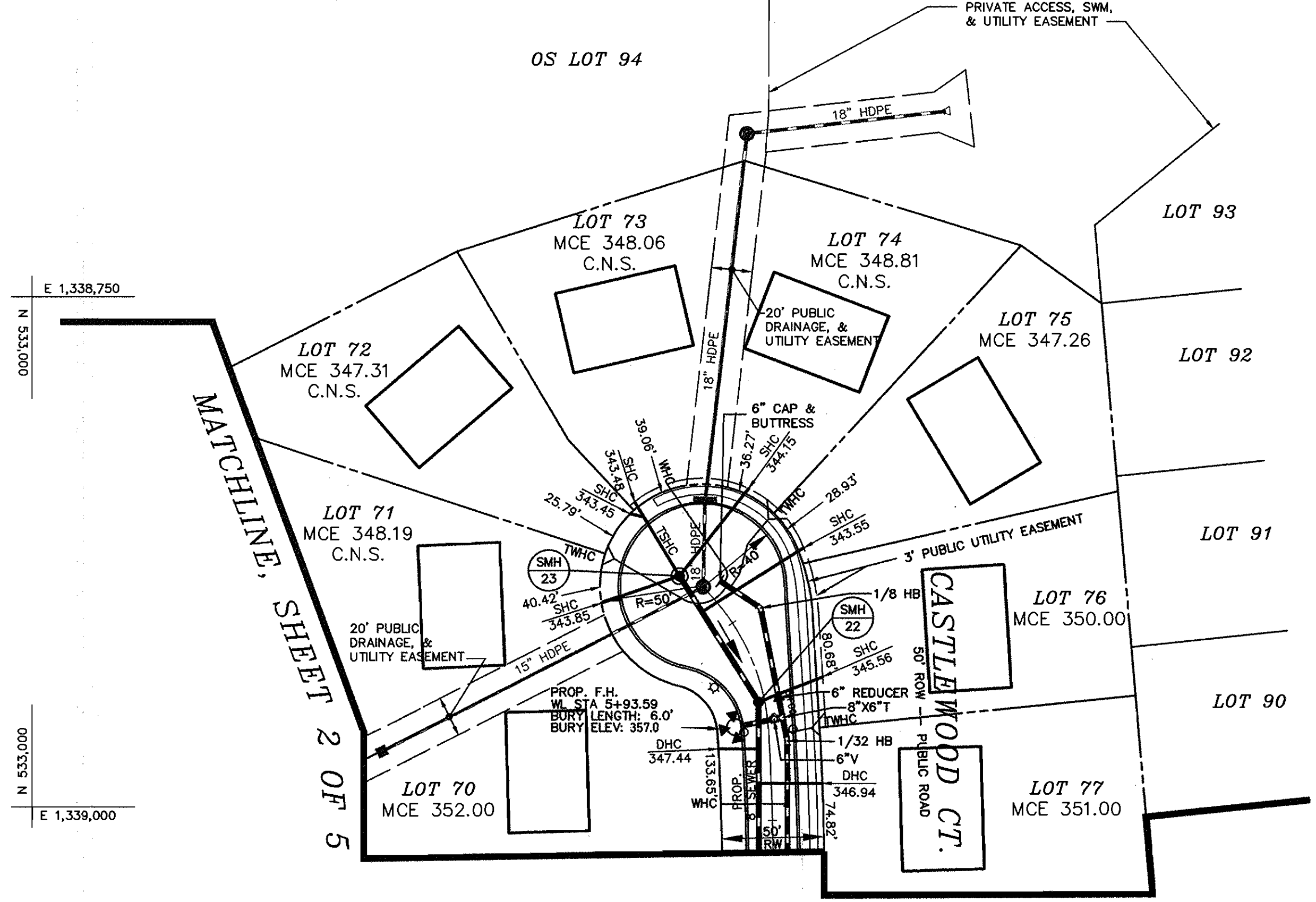
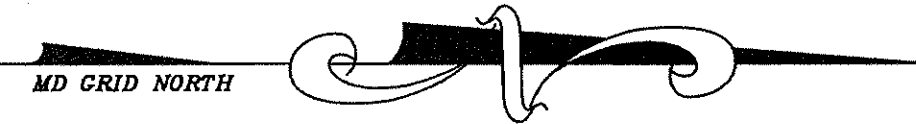
engineering	SJD	illustration	SJD	approval		project	97084	date	DEC 1998
BY	NO.	REVISION	DATE	600' SCALE MAP NO. 46	BLOCK NO. 15 & 16	1	REVISE BURY LENGTH ON CASTLEWOOD	4/13/99	

WATER & SEWER PLAN

RESERVOIR OVERLOOK,
LOTS 29 THRU 83
CONTRACT # 24-3735-D
SIXTH ELECTION DISTRICT
HOWARD COUNTY, MARYLAND

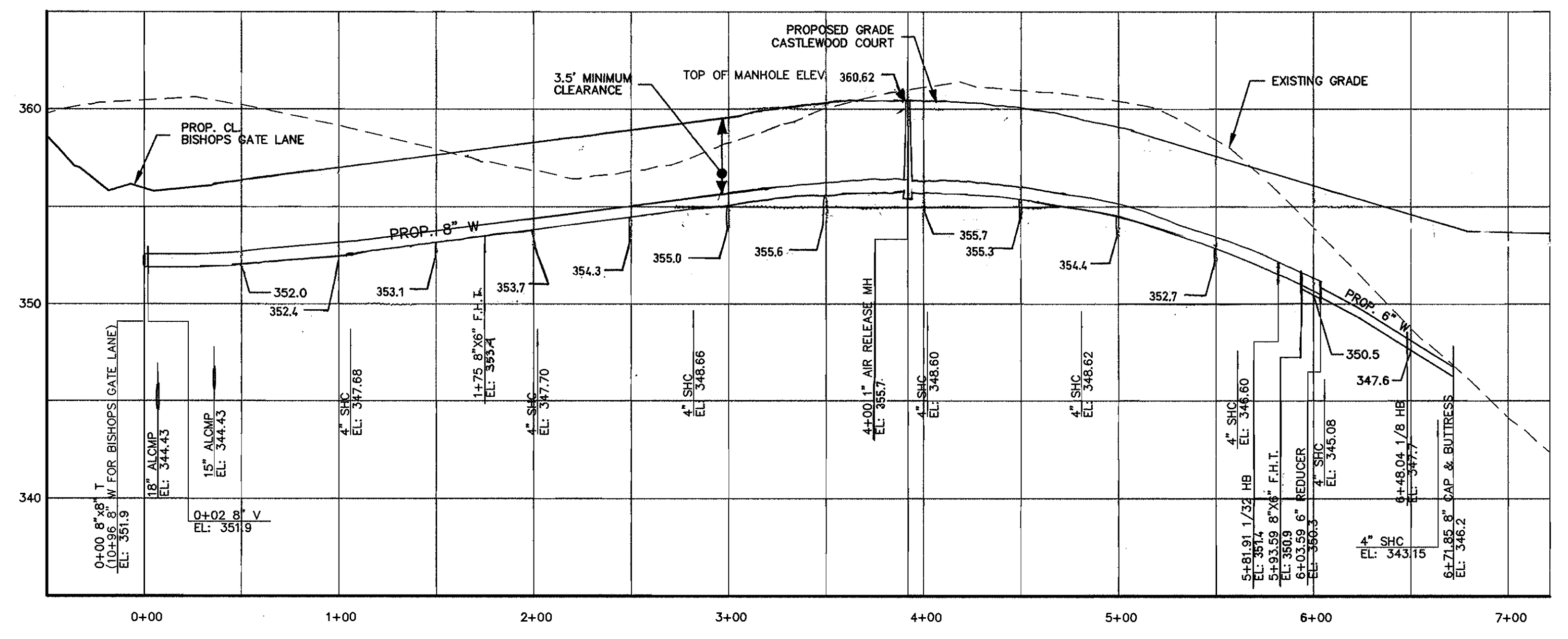
scale
1"=50'
2 of 5

F:\197084\DWG\FINAL\PH2-W&S\04-mw2-2.dwg 12-15-98 9:36:43 am EST

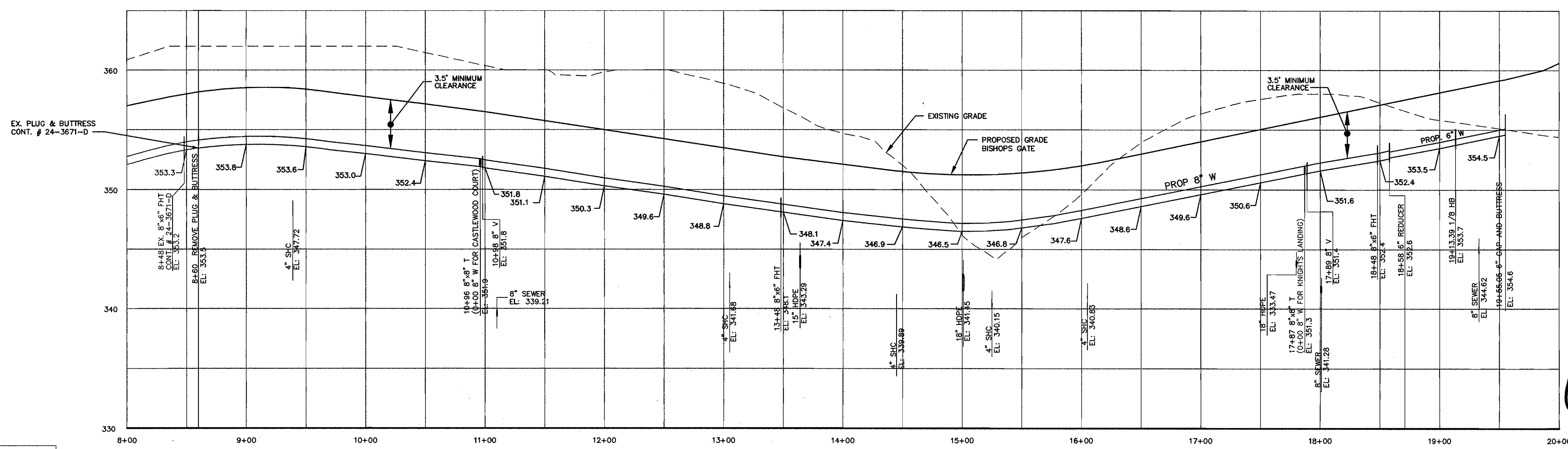


PLAN
SCALE: 1" = 50'

NOTE: FOR DETAIL OF TSHC FOR LOTS 72 & 73 SEE HO. CO. STD. DTL. S-214.



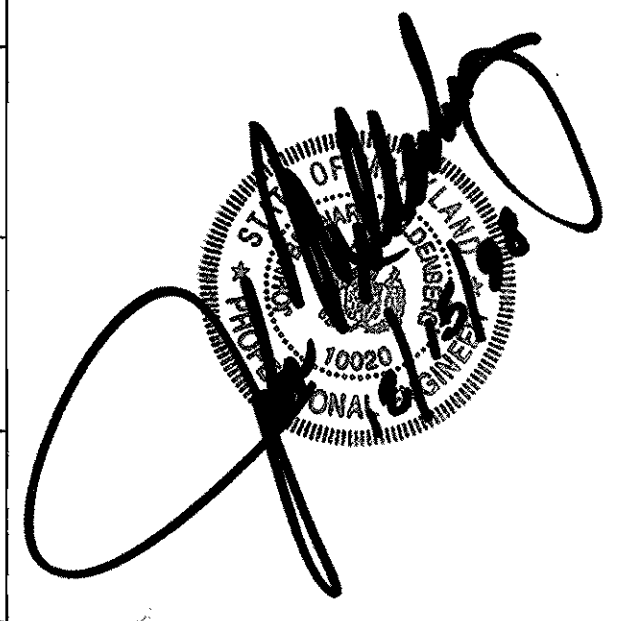
8" MAIN CASTLEWOOD COURT
ALL STATIONING IS WATER MAIN STATIONING
HORIZONTAL SCALE: 1" = 50'
VERTICAL SCALE: 1" = 5'



8" MAIN BISHOPS GATE LANE
ALL STATIONING IS WATER MAIN STATIONING
HORIZONTAL SCALE: 1" = 50'
VERTICAL SCALE: 1" = 5'

PLAN REFERENCE NUMBERS

F-88-112	P-98-03
S-97-07	F-98-61
WP-97-62	QP-98-99
WP-97-138	CONT # 24-3671-D



CONTRACT NO.: 24-3735-D
RESERVOIR OVERLOOK
WATER AND SEWER MAIN EXTENSIONS
HOWARD COUNTY, MARYLAND

DEPARTMENT OF PUBLIC WORKS
HOWARD COUNTY, MARYLAND

Richard A. Romanillo for 12-23-98
CHIEF, BUREAU OF UTILITIES RMB DATE

DEPARTMENT OF PLANNING & ZONING
HOWARD COUNTY, MARYLAND

Ham [Signature] 1/5/99
CHIEF, DEVELOPMENT ENGINEERING DIVISION DATE

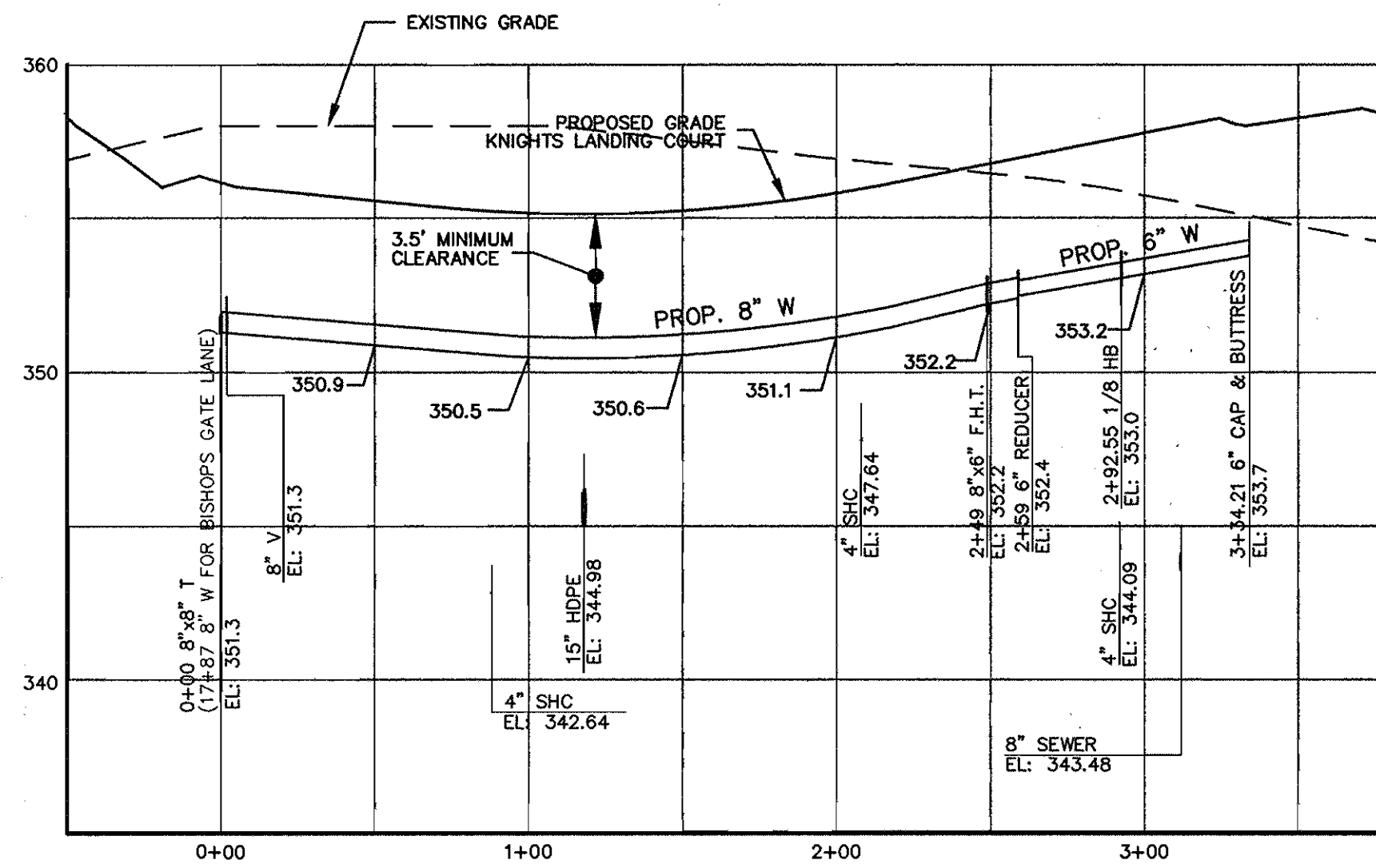
MILDENBERG, BOENDER & ASSOC., INC.
Engineers Planners Surveyors
5072 Dorsey Hall Drive, Suite 202, Ellicott City, Maryland 21042
(410) 997-0296 Fax (301) 621-5521 Wash. (410) 997-0298 Fax

engineering	SJD			
illustration	SJD			
approval				
project	97084	KS	1	REVISE BURY ELEV. OF FH & CASTLEWOOD 8" WATER MAIN
date	DEC 1998	BY	NO.	REVISION

**WATER & SEWER
PLAN & PROFILES**

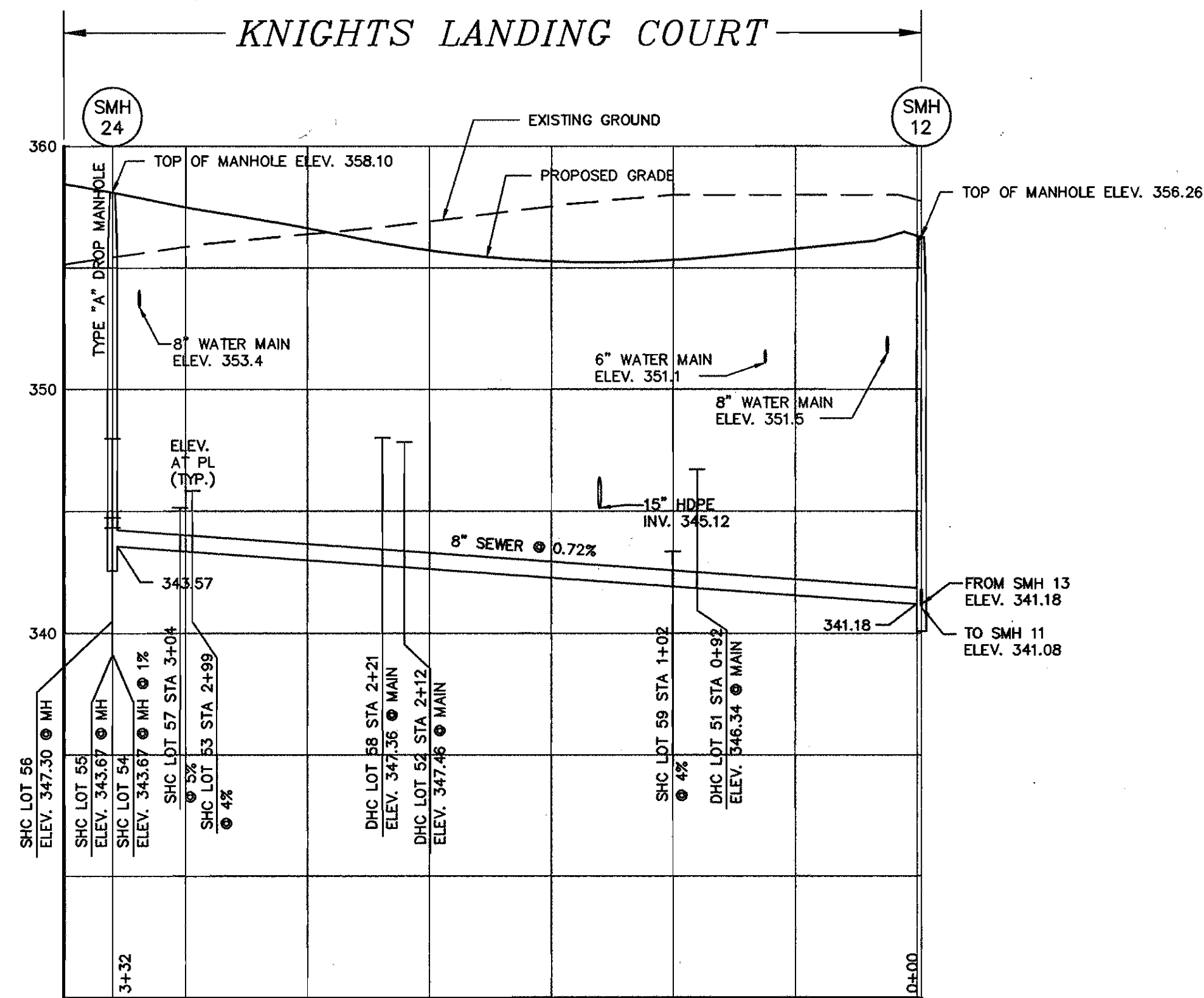
RESERVOIR OVERLOOK,
LOTS 29 THRU 83
CONTRACT # 24-3735-D
SIXTH ELECTION DISTRICT
HOWARD COUNTY, MARYLAND

F:\197084\DWG\FINAL\PH2-W&S\14-ws2-3.dwg 12-15-98 9:35:48 am EST



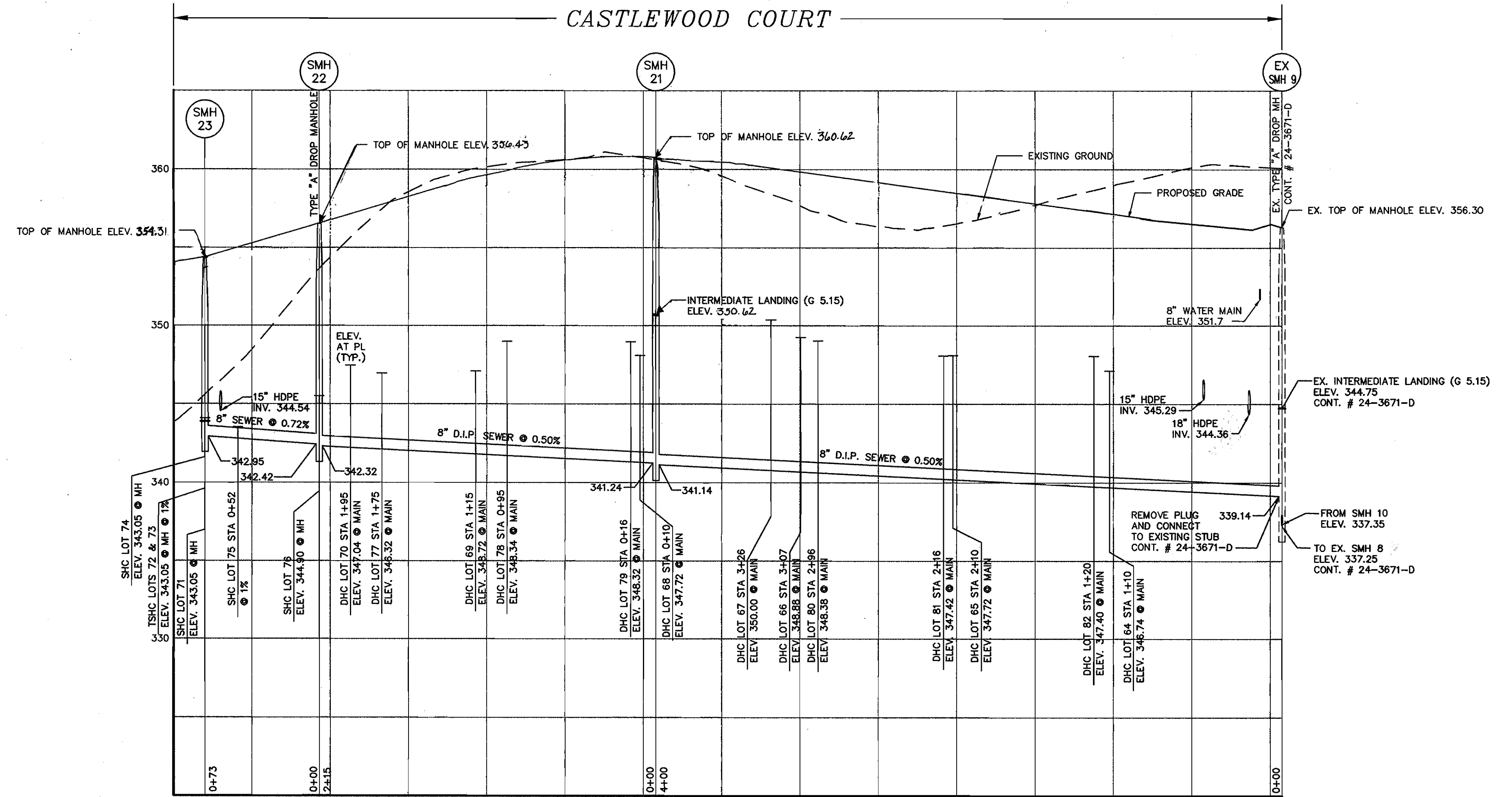
8" MAIN KNIGHTS LANDING

ALL STATIONING IS WATER MAIN STATIONING
 HORIZONTAL SCALE : 1" = 50'
 VERTICAL SCALE : 1" = 5'



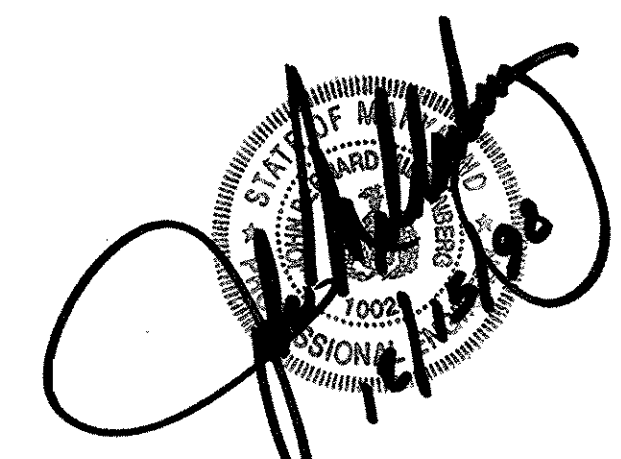
SEWER PROFILE - SMH 24 TO SMH 12

HORIZONTAL SCALE : 1" = 50'
 VERTICAL SCALE : 1" = 5'



SEWER PROFILE - SMH 23 TO SMH 9

HORIZONTAL SCALE : 1" = 50'
 VERTICAL SCALE : 1" = 5'



CONTRACT NO.: 24-3735-D
 RESERVOIR OVERLOOK
 WATER AND SEWER MAIN EXTENSIONS
 HOWARD COUNTY, MARYLAND

DEPARTMENT OF PUBLIC WORKS
 HOWARD COUNTY, MARYLAND

DEPARTMENT OF PLANNING & ZONING
 HOWARD COUNTY, MARYLAND

MILDENBERG, BOENDER & ASSOC., INC.
 Engineers Planners Surveyors
 5072 Dorsey Hall Drive, Suite 202, Ellicott City, Maryland 21042
 (410) 997-0296 Fax (301) 821-5321 Wash. (410) 997-0298 Fax

Michael A. Buscivilla for 12/29/98
 CHIEF, BUREAU OF UTILITIES RWD DATE

H. [Signature] 4/6/99
 CHIEF, DEVELOPMENT ENGINEERING DIVISION DATE

engineering	SJD			
illustration	SJD			
approval				
project	97084	K5	1	REVISE PROPOSED GRADE ON SEWER PROFILE - SMH 23 TO SMH 9
date	DEC 1998	BY	NO.	REVISION
				DATE

WATER & SEWER PROFILES

RESERVOIR OVERLOOK,
 LOTS 29 THRU 83
 CONTRACT # 24-3735-D
 SIXTH ELECTION DISTRICT
 HOWARD COUNTY, MARYLAND

scale
 AS SHOWN
 4 OF 5