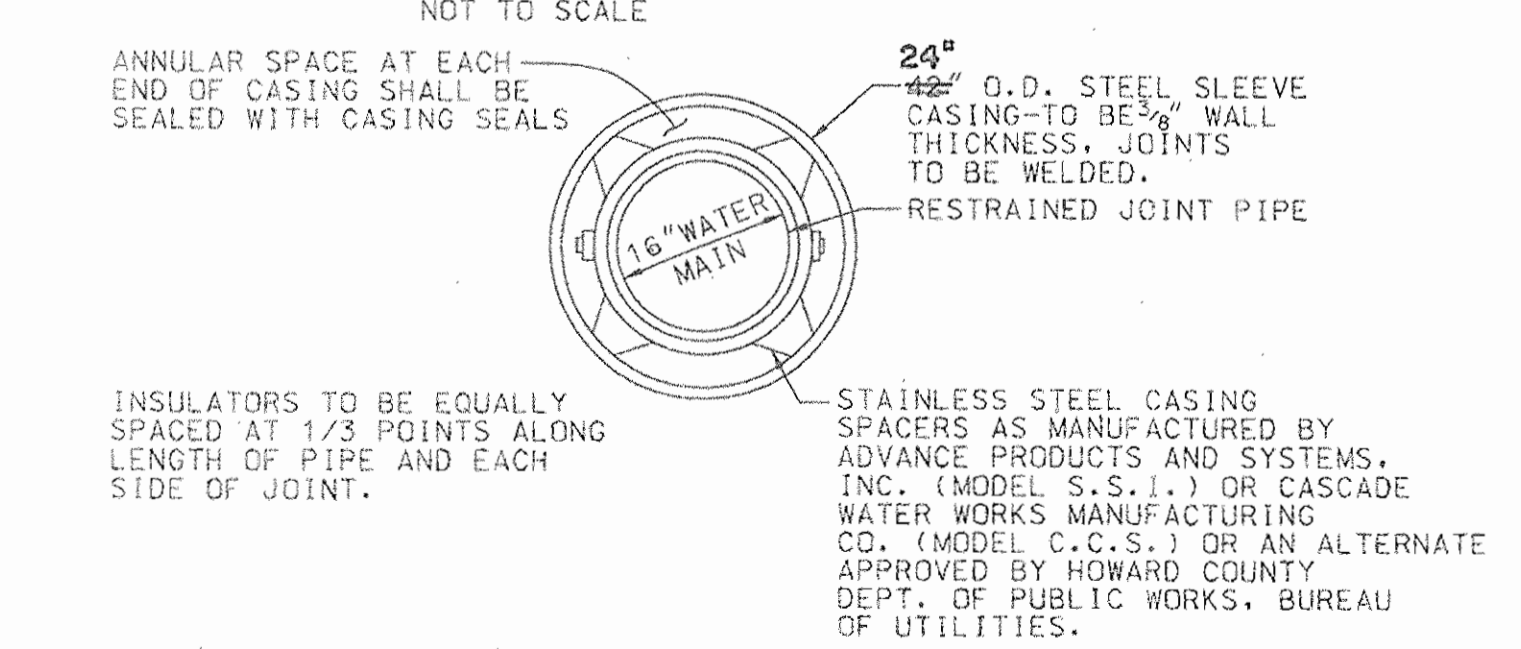


SCHMATIC PLACEMENT OF DIVISION VALVE
NOT TO SCALE



PLAN
SCALE: 1"=50'

ADDITIONAL FITTINGS

STA.	DESCRIPTION
2+08	1/8 HB - 16"
2+20	1/8 HB - 16"
2+26	16" HDPE ADAPTER
5+94	1/8 HB - 16" HDPE ADAPTER
6+00	1/16 HB - 16"
6+68	1/16 HB - 16"

NOTE: ALL STATIONING ON PLAN REFERS TO C WATER MAIN. SEE STAKEOUT SCHEDULE ON SHIT. 1 OF 12 FOR COORDINATED LOCATIONS OF STRUCTURES.

DEPARTMENT OF PUBLIC WORKS
HOWARD COUNTY, MARYLAND

[Signature] 9/20/05
DIRECTOR OF PUBLIC WORKS DATE

[Signature] 9/20/05
CHIEF, BUREAU OF ENGINEERING DATE

[Signature] 9-20-05
CHIEF, WATER & SEWER DESIGN DIV. DATE

H.E.C. JOB #93110

HICKS ENGINEERING CO., INC.
ENGINEERS, SURVEYORS & PLANNERS
100 EAST JOPPA ROAD - SUITE 402
TOWSON, MARYLAND 21286-3166
(410) 494-0001

[Signature] P.E.

DES:	FW				
DRN:	JPM				
CHK:	DEH	HEC	REVISED PER HOWARD COUNTY'S COMMENTS	9/12/05	
		HEC	REVISED PER HOWARD COUNTY'S COMMENTS	7/8/05	
DATE:	9/13/04	HEC	REVISED PER HOWARD COUNTY'S COMMENTS	3/05	
BY:	NO.		REVISION	DATE	

PLAN
16" WATER MAIN

600' SCALE MAP NO. W16 BLOCK NO.

ALBETH HEIGHTS WATER TRANSMISSION MAIN
ELECTION DISTRICT NO. 3
HOWARD COUNTY, MARYLAND
CAPITAL PROJECT NO. W-8195
CONTRACT NO. 44-3724

SCALE AS SHOWN
SHEET 2 OF 12

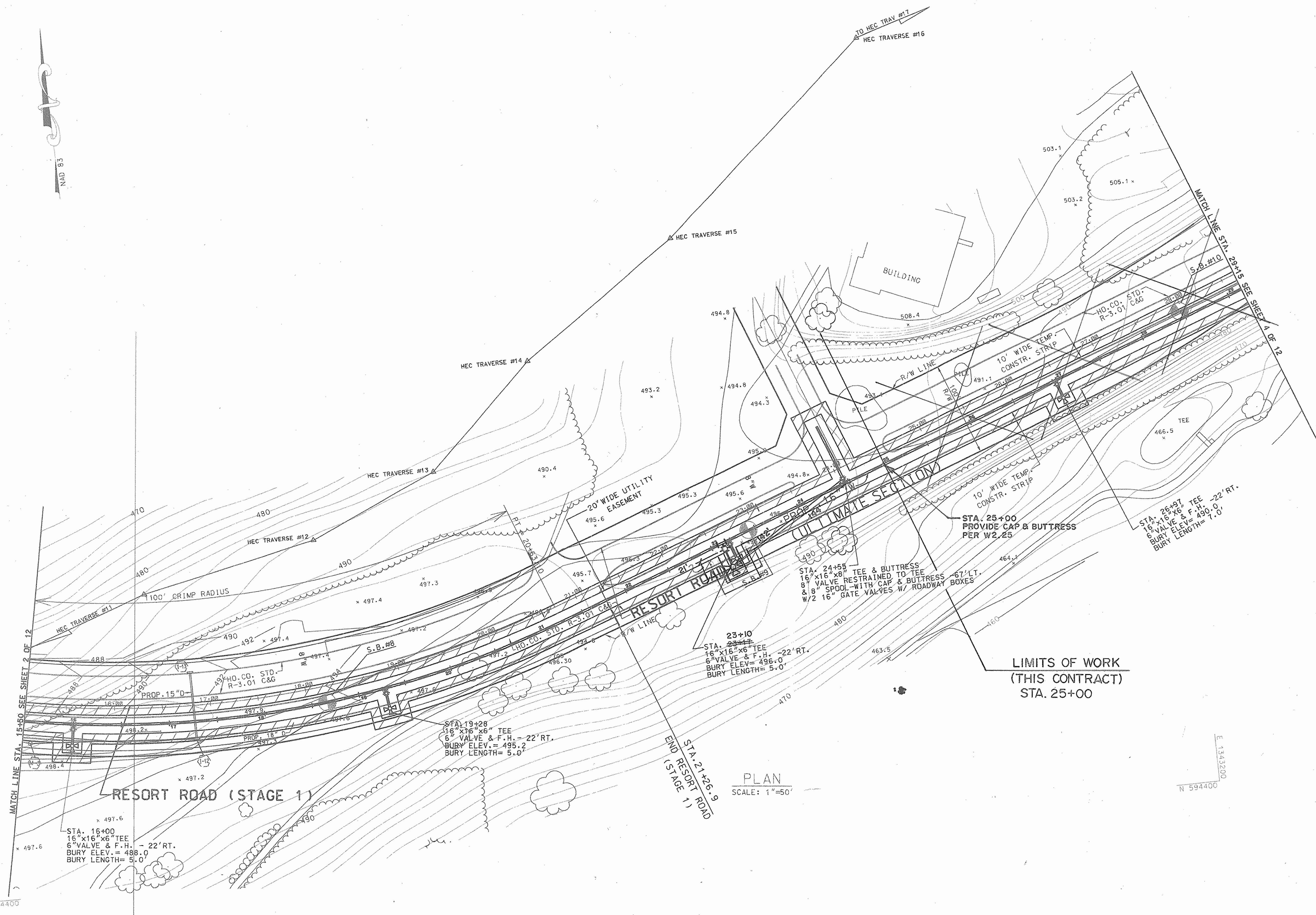
AS-BUILT 09/07



E 1341900
N 595000

E 1341900
N 594400

E 1343200
N 594400



PLAN
SCALE: 1"=50'

DEPARTMENT OF PUBLIC WORKS
HOWARD COUNTY, MARYLAND

James J. 930105
DIRECTOR OF PUBLIC WORKS DATE

Paul C. 9/20/05
CHIEF, BUREAU OF ENGINEERING DATE

9-20-05
CHIEF, BUREAU OF UTILITIES DATE

CHIEF, WATER & SEWER DESIGN DIV. DATE

H HICKS ENGINEERING CO., INC.
ENGINEERS, SURVEYORS & PLANNERS
200 EAST JOPP ROAD - SUITE 402
TOWSON, MARYLAND 21286-3166
(410) 494-0001



DES:	FW			
DRN:	JPM			
CHK:	DEH	HEC	REVISED PER HOWARD COUNTY'S COMMENTS	9/12/05
		HEC	REVISED PER HOWARD COUNTY'S COMMENTS	7/8/05
		HEC	REVISED PER HOWARD COUNTY'S COMMENTS	3/05
DATE:	9/13/04	BY	NO.	REVISION

16" PLAN
WATER MAIN

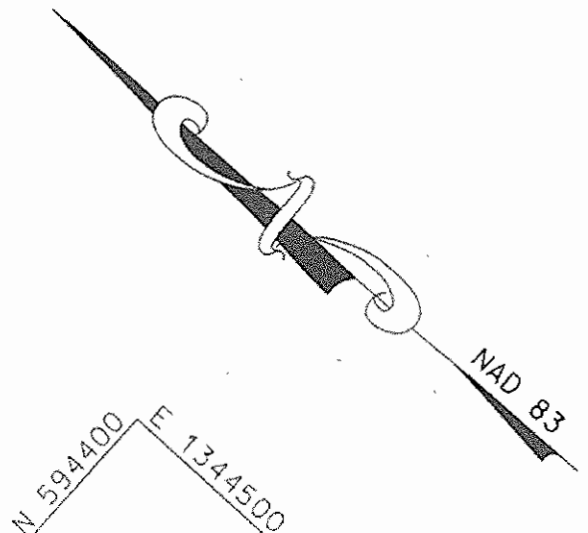
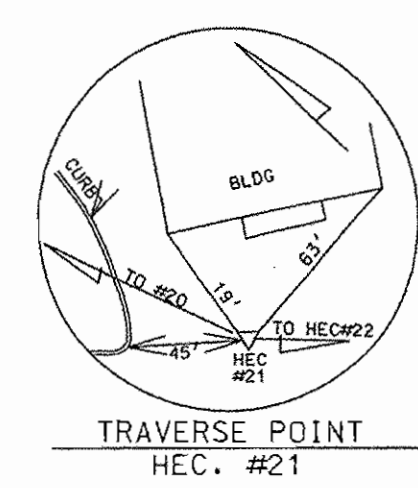
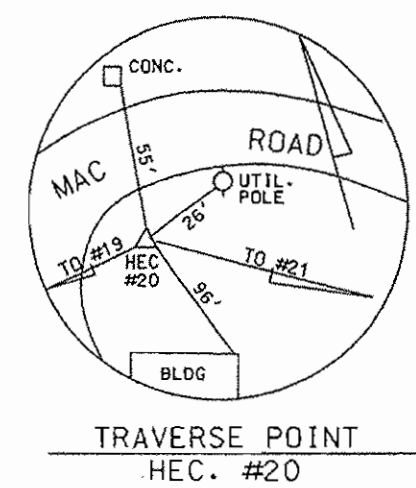
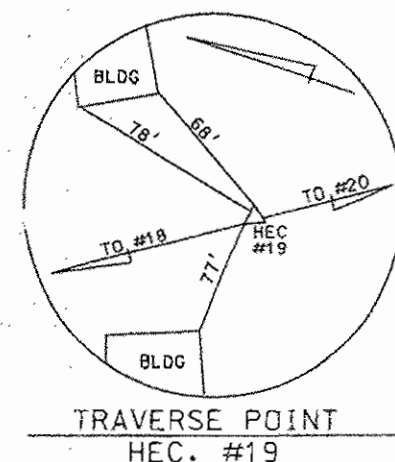
600' SCALE MAP NO. W16 BLOCK NO.

ALBETH HEIGHTS
WATER TRANSMISSION MAIN
ELECTION DISTRICT NO. 3
HOWARD COUNTY, MARYLAND
CAPITAL PROJECT NO. W-8195
CONTRACT NO. 44-3724

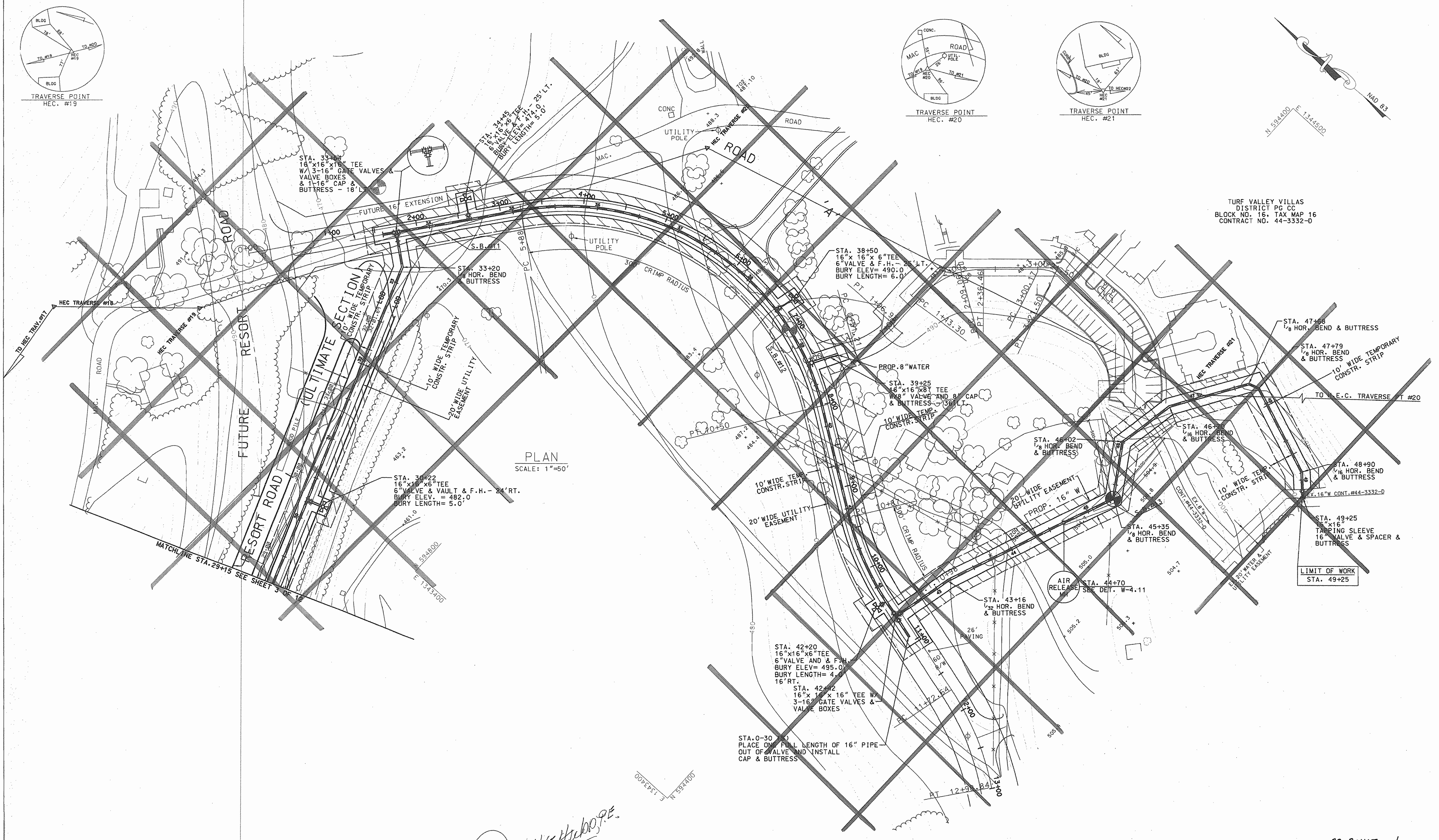
SCALE
AS
SHOWN

SHEET
3 OF 12

AS-BUILT 09/07



TURF VALLEY VILLAS
DISTRICT PG CC
BLOCK NO. 16, TAX MAP 16
CONTRACT NO. 44-3332-D



PLAN
SCALE: 1"=50'

AS-BUILT 9/07

DEPARTMENT OF PUBLIC WORKS
HOWARD COUNTY, MARYLAND

Director of Public Works: *John A. Roberts* 9/20/05
Chief, Bureau of Engineering: *Paul J. Deegan*

Chief, Bureau of Utilities: *John A. Roberts* 9-20-05
Chief, Water & Sewer Design Div.: *John A. Roberts*

HICKS ENGINEERING CO., INC.
ENGINEERS, SURVEYORS & PLANNERS
200 EAST JOPPA ROAD, SUITE 402
TOWSON, MARYLAND 21286-3160
(410) 494-0001

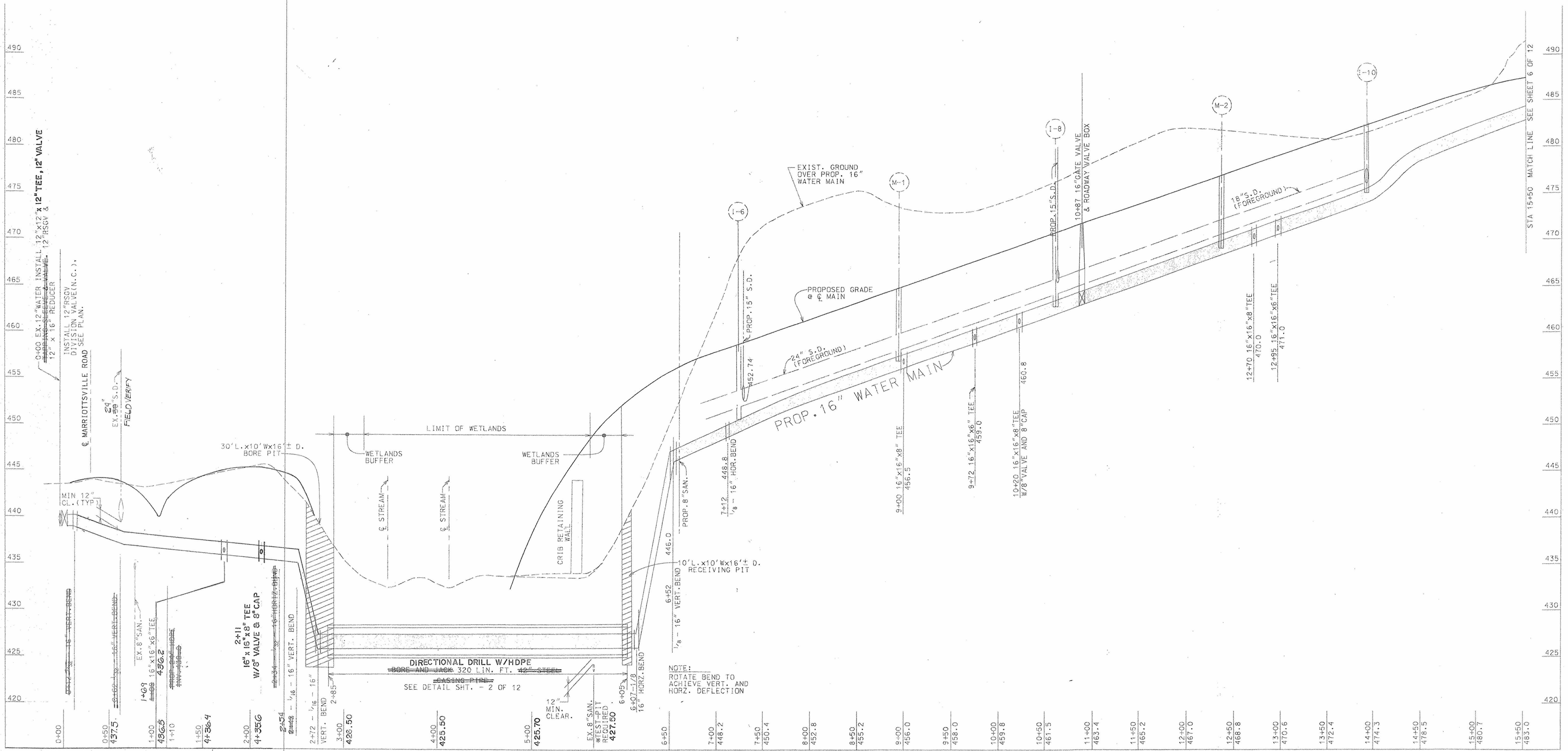
David Edwin Hicks
Professional Engineer

DES:	FW		
DRN:	JPM		
CHK:	DEH	HEC	REVISED PER HOWARD COUNTY COMMENTS 9/12/05
		HEC	REVISED PER HOWARD COUNTY COMMENTS 7/8/05
		HEC	REVISED PER HOWARD COUNTY COMMENTS 3/05
DATE:	9/13/04	BY	NO.
			REVISION
			DATE

600' SCALE MAP NO. W16 BLOCK NO.

ALBETH HEIGHTS
WATER TRANSMISSION MAIN
ELECTION DISTRICT NO. 3
HOWARD COUNTY, MARYLAND
CAPITAL PROJECT NO. W-8195
CONTRACT NO. 44-3724

SCALE AS SHOWN
SHEET 4 OF 12



PROFILE
SCALE: HOR. 1"=50'
VERT. 1"=5'

DEPARTMENT OF PUBLIC WORKS
HOWARD COUNTY, MARYLAND

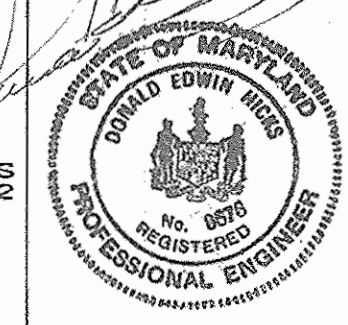
Carroll 9/20/05
DIRECTOR OF PUBLIC WORKS DATE

Paul 9/20/05
CHIEF, BUREAU OF ENGINEERING DATE

Don 9-20-05
CHIEF, WATER & SEWER DESIGN DIV. DATE

H.E.C. JOB #93110

H HICKS ENGINEERING CO., INC.
ENGINEERS, SURVEYORS & PLANNERS
200 EAST JOPPA ROAD, SUITE 402
TOWSON, MARYLAND 21286-3160
(410) 494-0001



DES:	FW				
DRN:	JPM				
CHK:	DEH	HEC	REVISED PER HOWARD COUNTY'S COMMENTS	9/12/05	
		HEC	REVISED PER HOWARD COUNTY'S COMMENTS	7/8/05	
		HEC	REVISED PER HOWARD COUNTY'S COMMENTS	3/05	
DATE:	9/13/04	BY	NO.	REVISION	DATE

600' SCALE MAP NO. W16 BLOCK NO.

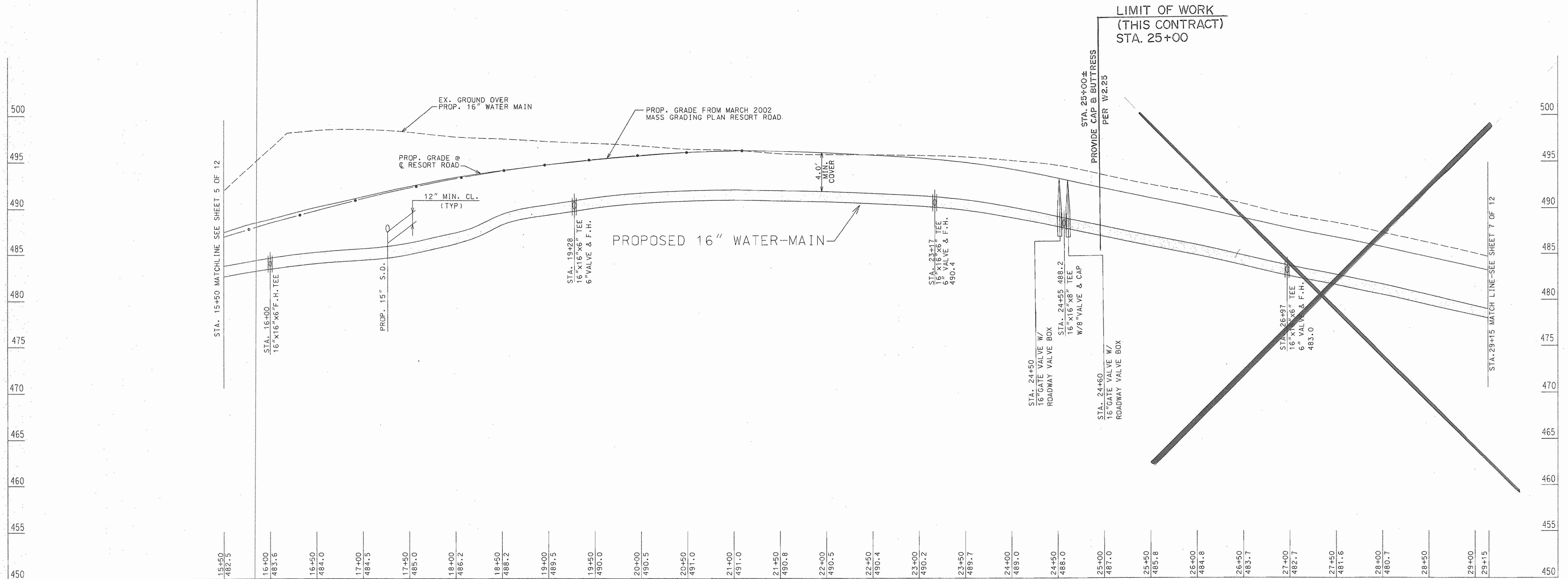
**PROFILE
16" WATER MAIN**

ALBETH HEIGHTS
WATER TRANSMISSION MAIN
ELECTION DISTRICT NO. 3
HOWARD COUNTY, MARYLAND
CAPITAL PROJECT NO. W-8195
CONTRACT NO. 44-3724

SCALE AS SHOWN
SHEET 5 OF 12

AS-BUILT 09/07

RESORT ROAD



PROFILE
SCALE: HOR. 1"=50'
VERT. 1"=5'

AS-BUILT 09/07

DEPARTMENT OF PUBLIC WORKS
HOWARD COUNTY, MARYLAND

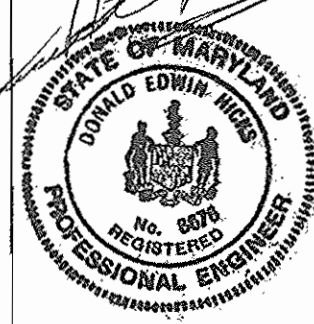
John J. ... 9/30/05 DIRECTOR OF PUBLIC WORKS
Paul D. ... 9/20/05 CHIEF, BUREAU OF ENGINEERING

John ... 9/20/05 CHIEF, BUREAU OF UTILITIES
... 9-20-05 CHIEF, WATER & SEWER DESIGN DIV.

HOWARD COUNTY JOB #93110

HICKS ENGINEERING CO., INC.
ENGINEERS, SURVEYORS & PLANNERS
205 EAST JOHNS ROAD - SUITE 402
TOWSON, MARYLAND 21286-3160
(410) 494-0001

W. H. ...



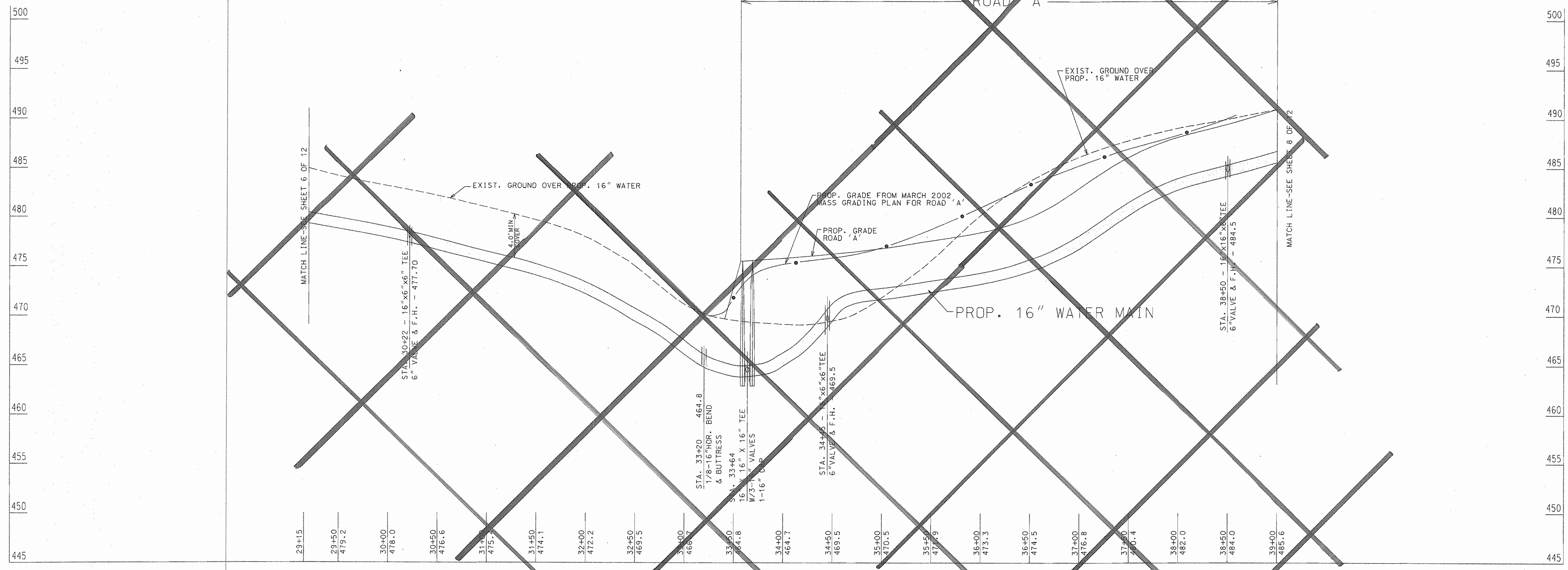
DES:	FW		
DRN:	KEB		
CHK:	DEH	HEC	REVISED PER HOWARD COUNTY'S COMMENTS 9/12/05
		HEC	REVISED PER HOWARD COUNTY'S COMMENTS 7/8/05
		HEC	REVISED PER HOWARD COUNTY'S COMMENTS 3/05
DATE:	03/16/05	BY	NO.
		REVISION	DATE

PROFILE
16" WATER MAIN

600' SCALE MAP NO. W16 BLOCK NO.

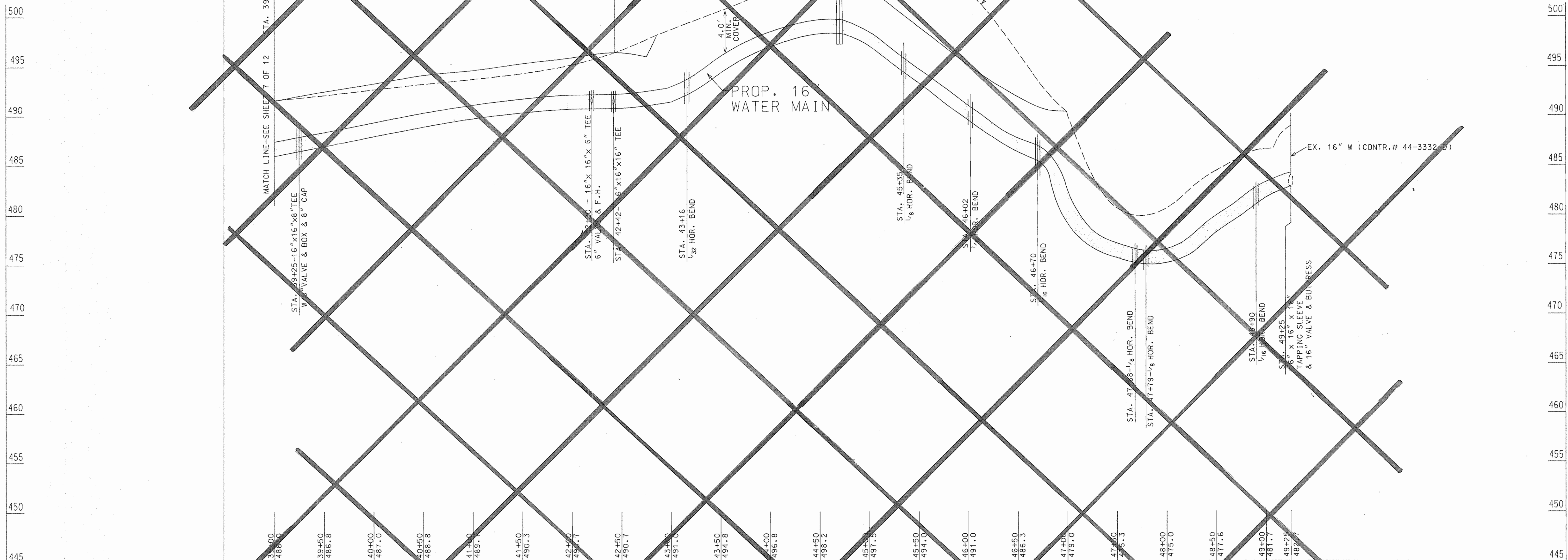
ALBETH HEIGHTS
WATER TRANSMISSION MAIN
ELECTION DISTRICT NO. 3
HOWARD COUNTY, MARYLAND
CAPITAL PROJECT NO. W-8195
CONTRACT NO. 44-3724

SCALE AS SHOWN
SHEET 6 OF 12



PROFILE
SCALE: HOR. 1"=50'
VERT. 1"=5'

DEPARTMENT OF PUBLIC WORKS HOWARD COUNTY, MARYLAND				AS-BUILT 09/07		ALBETH HEIGHTS WATER TRANSMISSION MAIN		SCALE AS SHOWN			
Director of Public Works: <i>[Signature]</i> 9/30/05 Date: 9/30/05		Chief, Bureau of Engineering: <i>[Signature]</i> 9/20/05 Date: 9/20/05		DES: FW		PROFILE 16" WATER MAIN		ELECTION DISTRICT NO. 3 HOWARD COUNTY, MARYLAND CAPITAL PROJECT NO. W-8195 CONTRACT NO. 44-3724			
Chief, Bureau of Utilities: <i>[Signature]</i> 9/20/05 Date: 9/20/05		Chief, Water & Sewer Design Div.: <i>[Signature]</i> 9-20-05 Date: 9-20-05		DRN: KEB							
Hicks Engineering Co., Inc. ENGINEERS, SURVEYORS & PLANNERS 200 EAST JOPPA ROAD, SUITE 402 TOWSON, MARYLAND 21286-3160 (410) 494-0001		State of Maryland Professional Engineer		CHK: DEH HEC REVISOR HEC REVISOR HEC REVISOR DATE: 3/18/05						REVISION REVISION REVISION DATE: 9/12/05 DATE: 7/8/05 DATE: 3/05	
Job #33110		600' SCALE MAP NO. W16		BLOCK NO.						SHEET 7 OF 12	



PROFILE
SCALE: HOR. 1"=50'
VERT. 1"=5'

AS-BUILT 09/07

DEPARTMENT OF PUBLIC WORKS
HOWARD COUNTY, MARYLAND

Langley 9/20/05
DIRECTOR OF PUBLIC WORKS DATE

David S. ... 9/20/05
CHIEF, BUREAU OF ENGINEERING DATE

... 9-20-05
CHIEF, WATER & SEWER DESIGN DIV. DATE

H HICKS ENGINEERING CO., INC.
ENGINEERS, SURVEYORS & PLANNERS
200 EAST JOPPA ROAD - SUITE 402
TOWSON, MARYLAND 21286-3165
(410) 494-0001



DES:	FW		
DRN:	KEB		
CHK:	DEH	HEC	REVISED PER HOWARD COUNTY COMMENTS 9/12/05
		HEC	REVISED PER HOWARD COUNTY COMMENTS 7/8/05
		HEC	REVISED PER HOWARD COUNTY COMMENTS 3/05
DATE:	03/21/05	BY:	NO.
		REVISION	DATE

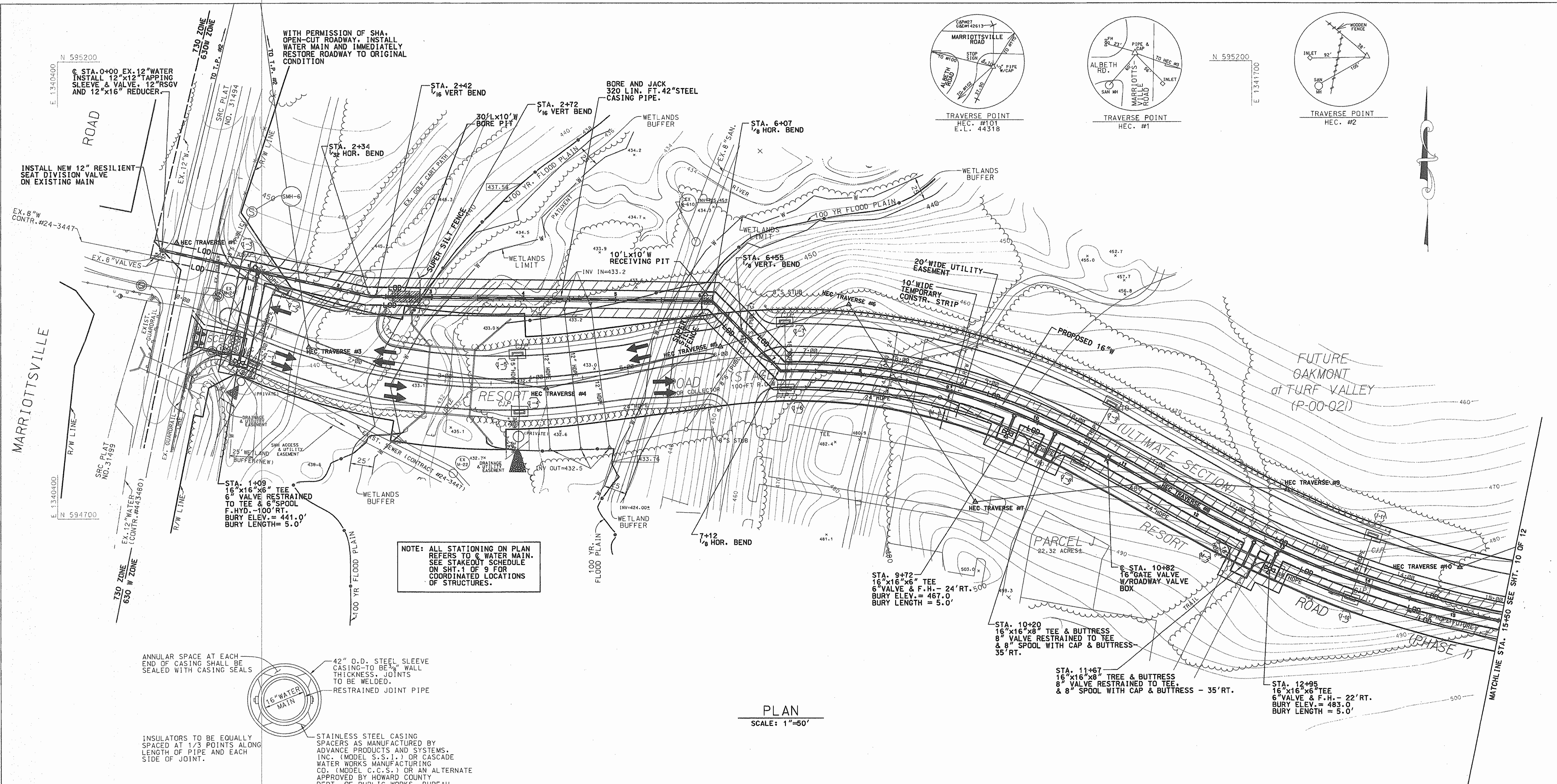
PROFILE
16" WATER MAIN

600' SCALE MAP NO. W16 BLOCK NO.

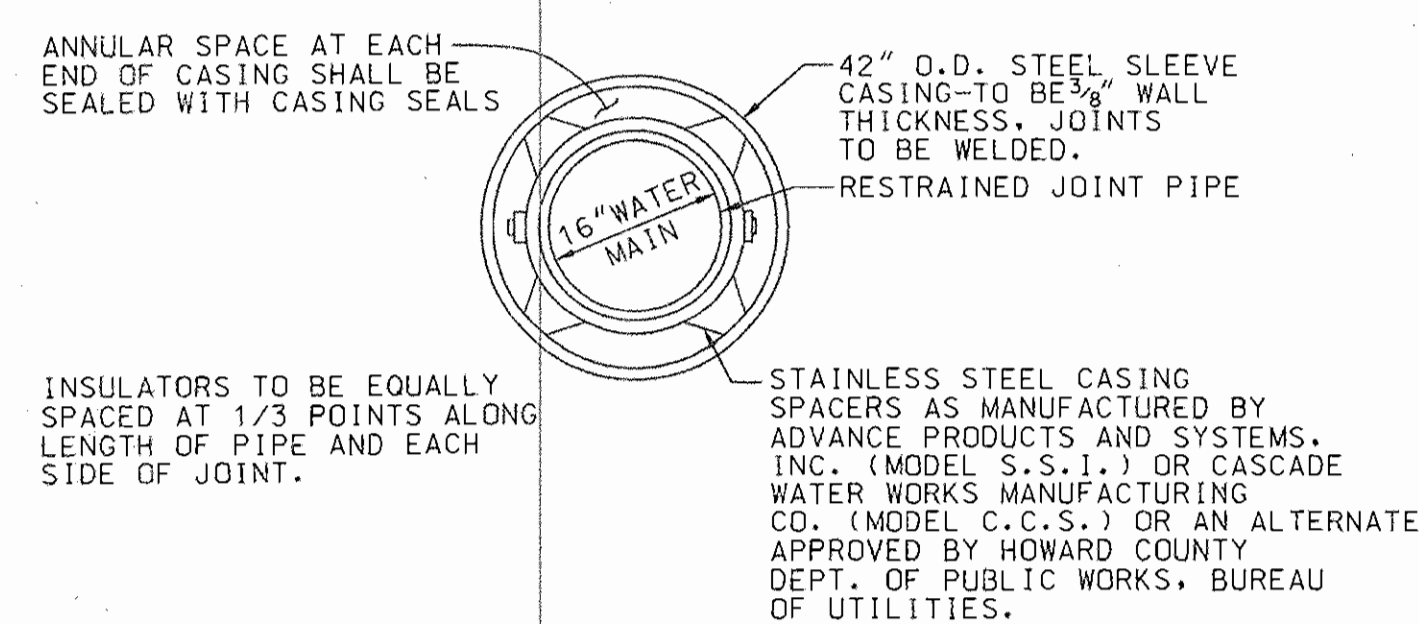
ALBETH HEIGHTS
WATER TRANSMISSION MAIN
ELECTION DISTRICT NO. 3
HOWARD COUNTY, MARYLAND
CAPITAL PROJECT NO. W-8195
CONTRACT NO. 44-3724

SCALE AS SHOWN

SHEET 8 OF 12



NOTE: ALL STATIONING ON PLAN REFERS TO C WATER MAIN. SEE STAKEOUT SCHEDULE ON SHT. 1 OF 9 FOR COORDINATED LOCATIONS OF STRUCTURES.



DETAIL FOR TRENCHLESS EXCAVATION CROSSING @ LITTLE PATUXENT RIVER
NOT TO SCALE

PLAN
SCALE: 1"=50'

AS-BUILT 09/07

DEPARTMENT OF PUBLIC WORKS
HOWARD COUNTY, MARYLAND
DIRECTOR OF PUBLIC WORKS: [Signature] 9/20/05
DATE: 9/20/05
CHIEF, BUREAU OF ENGINEERING: [Signature]
CHIEF, BUREAU OF UTILITIES: [Signature] 9/20/05
DATE: 9/20/05
CHIEF WATER & SEWER DESIGN DIV.: [Signature]
DATE: 9/20/05
JOB #93110

HICKS ENGINEERING CO., INC.
ENGINEERS, SURVEYORS & PLANNERS
200 EAST JOFFA ROAD - SUITE 402
TOWSON, MARYLAND 21286-3166
(410) 494-0001
Professional Engineer Seal: [Signature] H. E. Hicks, P.E.

DES:	FW			
DRN:	JPM			
CHK:	DEH	HEC	REVISED PER HOWARD COUNTY'S COMMENTS	9/12/05
		HEC	REVISED PER HOWARD COUNTY'S COMMENTS	7/8/05
		HEC	REVISED PER HOWARD COUNTY'S COMMENTS	3/05
DATE:	9/13/04			
BY:	NO.	REVISION		DATE

SOIL EROSION AND SEDIMENT CONTROL PLAN
600' SCALE MAP NO. W16 BLOCK NO.

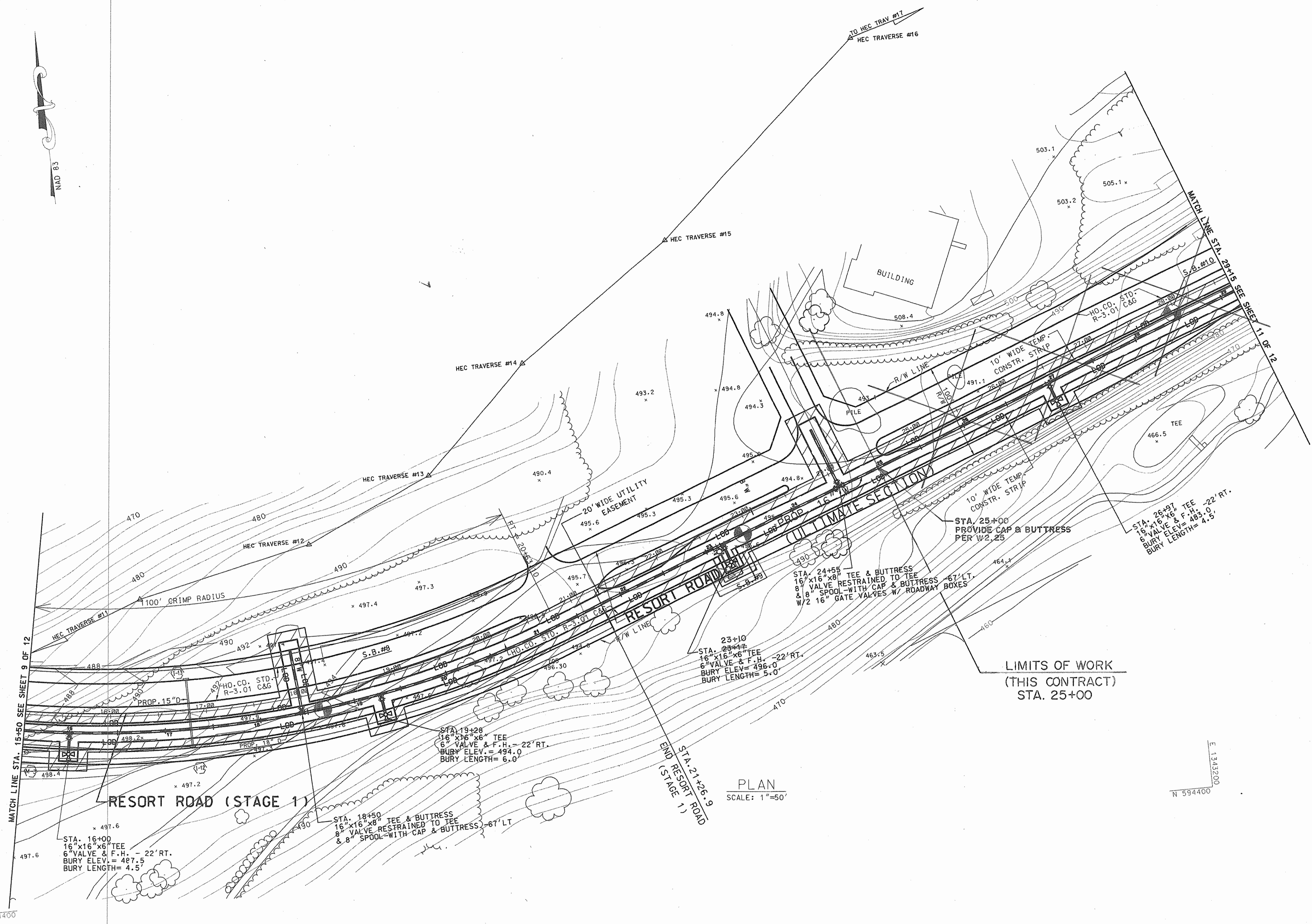
ALBETH HEIGHTS WATER TRANSMISSION MAIN
ELECTION DISTRICT NO. 3
HOWARD COUNTY, MARYLAND
CAPITAL PROJECT NO. W-8195
CONTRACT NO. 44-3724
SCALE AS SHOWN
SHEET 9 OF 12



E 1341900
N 595000

E 1341900
N 594400

E 1343200
N 594400



PLAN
SCALE: 1"=50'

AS-BUILT 09/07

DEPARTMENT OF PUBLIC WORKS
HOWARD COUNTY, MARYLAND

John A. ... 9/22/05
DIRECTOR OF PUBLIC WORKS DATE

Paul ... 9/22/05
CHIEF, BUREAU OF ENGINEERING DATE

... 9-20-05
CHIEF BUREAU UTILITIES DATE

... 9-20-05
CHIEF WATER & SEWER DESIGN DIV. DATE

H.E.C. JOB #93110

H HICKS ENGINEERING CO., INC.
ENGINEERS, SURVEYORS & PLANNERS
200 EAST JOFFA ROAD - SUITE 402
TOWSON, MARYLAND 21286-3165
(410) 494-0001

...

DES:	FW			
DRN:	JPM			
CHK:	DEH	HEC	REVISED PER HOWARD COUNTY'S COMMENTS	9/12/05
DATE:	9/13/04	HEC	REVISED PER HOWARD COUNTY'S COMMENTS	3/05
BY	NO.		REVISION	DATE

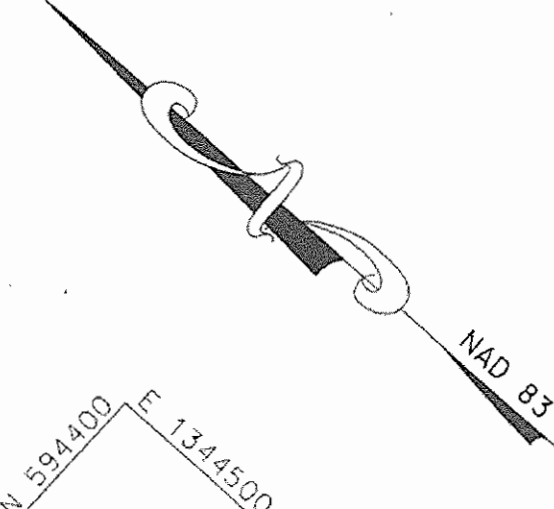
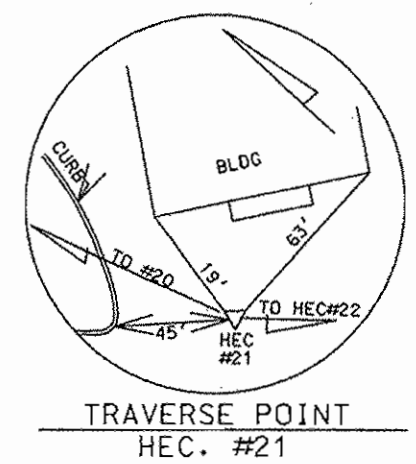
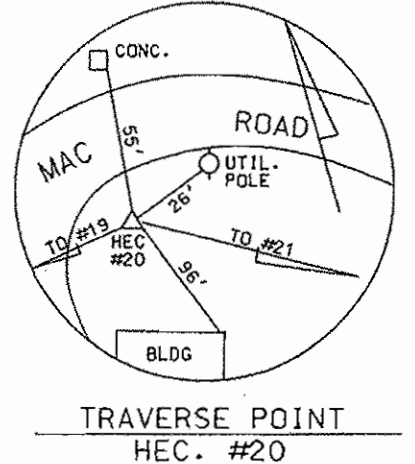
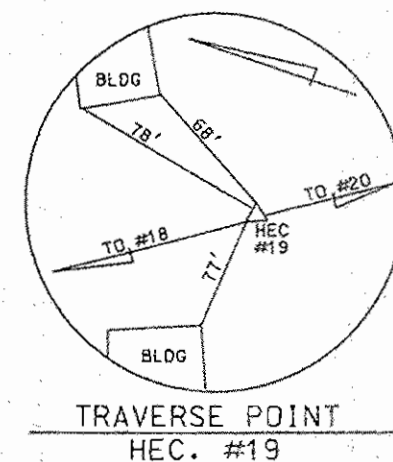
SOIL EROSION AND
SEDIMENT CONTROL
PLAN

600' SCALE MAP NO. W16 BLOCK NO.

ALBETH HEIGHTS
WATER TRANSMISSION MAIN
ELECTION DISTRICT NO. 3
HOWARD COUNTY, MARYLAND
CAPITAL PROJECT NO. W-8195
CONTRACT NO. 44-3724

SCALE AS SHOWN

SHEET 10 OF 12



PLAN
SCALE: 1"=50'

TURF VALLEY VILLAS
DISTRICT PG CC
BLOCK NO. 16, TAX MAP 16
CONTRACT NO. 44-3332-D

MATCHLINE STA. 29+15 SEE SHEET 10 OF 12

LIMIT OF WORK
STA. 49+25

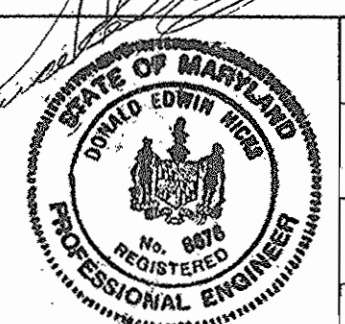
DEPARTMENT OF PUBLIC WORKS
HOWARD COUNTY, MARYLAND

Director of Public Works DATE 9/20/05
Chief, Bureau of Engineering DATE 9-20-05
Chief, Bureau of Utilities DATE 9-20-05
Chief, Water & Sewer Design Div. DATE

H.C. JOB #93110

HICKS ENGINEERING CO., INC.
ENGINEERS, SURVEYORS & PLANNERS
200 EAST JOHNS ROAD, SUITE 402
TOWSON, MARYLAND 21286-3160
(410) 494-0001

Professional Engineer



DES:	FW				
DRN:	JPM				
CHK:	DEH	HEC	REVISED PER HOWARD COUNTY COMMENTS	9/12/05	
DATE:	9/13/04	HEC	REVISED PER HOWARD COUNTY COMMENTS	3/05	
BY	NO.		REVISION	DATE	

SOIL EROSION AND
SEDIMENT CONTROL
PLAN

600' SCALE MAP NO. W16 BLOCK NO.

ALBETH HEIGHTS
WATER TRANSMISSION MAIN
ELECTION DISTRICT NO. 3
HOWARD COUNTY, MARYLAND
CAPITAL PROJECT NO. W-8195
CONTRACT NO. 44-3724

SCALE
AS
SHOWN

SHEET
11 OF 12

