

SHEET INDEX	
NO	DESCRIPTION
1	TITLE SHEET
2	PLAN OF SEWER MAINS
3	PROFILE OF SEWER MAINS

OUTFALL SEWER EXTENSION

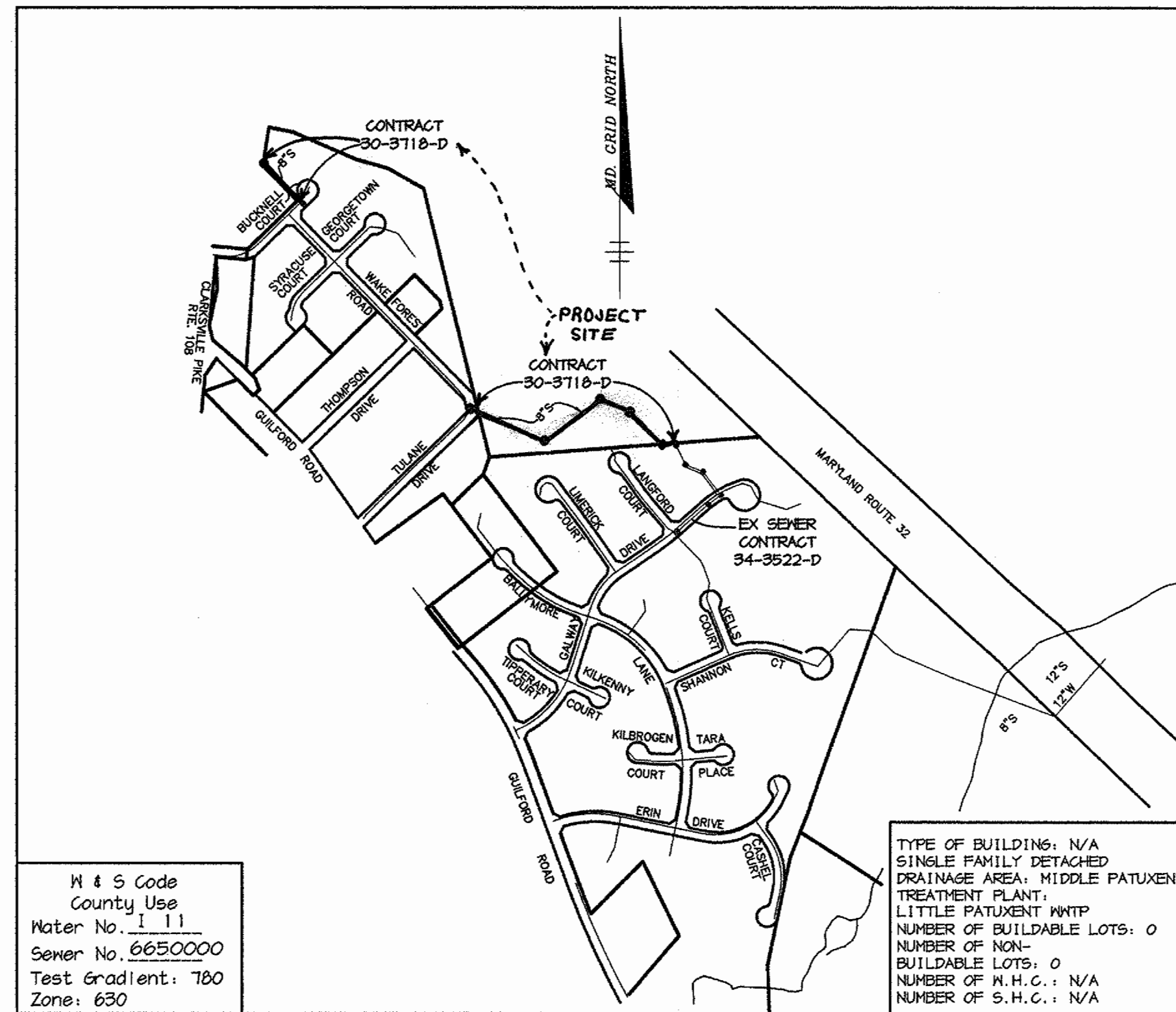
CLARKS GLEN NORTH

5th ELECTION DISTRICT
HOWARD COUNTY, MARYLAND
CONTRACT NO. 30-3718-D

GENERAL NOTES

1. Approximate location of existing mains are shown. The contractor shall take all necessary precautions to protect existing mains and services and maintain uninterrupted supply. Any damage incurred shall be repaired immediately to the satisfaction of the Engineer at the Contractor's expense.
2. All horizontal controls are based on Maryland State Coordinates.
3. All vertical controls are based on U.S.G.S. data.
4. All pipe elevations shown are invert elevations.
5. Clear all utilities by a minimum of 6". Clear all poles by 2'-0" minimum or tunnel as required. The owner has contacted the utility companies and has made arrangements for bracing of poles as shown on the drawings. In the event the contractor's work requires the bracing of additional poles, any cost incurred by the owner for bracing of additional poles or damages shall be deducted from money owed the contractor. The contractor shall coordinate with the utility companies to schedule the bracing of the poles.
6. For details not shown on the drawings, and for materials and construction methods use Howard County Design Manual, Volume IV, Standard Specifications and Detail for Construction, (Latest Edition). The contractor shall have a copy of Volume IV on the job.
7. Where test pits have been made on existing utilities, they are noted by the symbol at the location of the test pit. A note or notes containing the results of the test pit or pits is included on the drawings. Existing utilities in the vicinity of the proposed work for which test pits have not been dug shall be located by the contractor two weeks in advance of construction operations at his own expense.
8. Contractor shall notify the following utility companies or agencies at least five working days before starting work shown on these plans.

State Highway Administration	531-5533
Baltimore Gas & Electric Co. Contractor Services	250-4620
Baltimore Gas & Electric Co. Underground Damage Control	781-5068
Miss Utility	1-800-257-7777
Colonial Pipeline Co.	745-1340
Bureau of Utilities, Howard County Department of Public Works	313-4900
9. Trees and shrubs are to be protected from damage to maximum extent. Trees and shrubs located within the construction strip are not to be removed or damaged by the contractor.
10. Contractor shall remove trees, stumps and roots along line of excavation. Payment for such removal shall be included in the unit price bid for construction of the main.
11. All sewer mains shall be D.I.P. and P.V.C. unless otherwise noted.
12. All manholes shall be 4'-0" inside diameter unless otherwise noted.
13. Force mains shall be D.I.P. only.
14. Manholes shown with 12" and 16" walls are for brick manholes only.
15. Manholes designated M.T. in plan and profile shall have watertight frame and covers, Standard Detail 65.52. Where watertight manhole frame and cover is used, set top of frame 1'-6" above finished grade unless otherwise noted on the drawings.
16. House(s) with the symbol "C.N.S." indicates that cellar cannot be served.
17. Manholes can be either brick or precast concrete structures.
18. Contractor is solely responsible for construction means, methods, techniques, sequences, procedures, and safety precautions and programs.
19. The contractor shall notify the Bureau of Highways, Howard County, at (410) 313-7450 at least five (5) working days before any open cut of any county road or boring/jacking operation in county roads for laying water/sewer mains or house connections. The approval of these drawings will constitute compliance with DFN requirements per Section 18.114(a) of the Howard County Code.
20. Howard County DFN is hereby granted permission to access private lots shown on these plans in order to maintain public water and sewer house connections at the curb stops and/or cleanouts.



VICINITY MAP
SCALE: 1"=600'

QUANTITIES				
ITEMS	QUANTITIES ESTIMATED	AS-BUILT		
		QUANTITIES	TYPE	MANUFACTURER / SUPPLIER
8" SEWER	1333 LF			
SEWER MANHOLES	6 EA.			

NAME OF UTILITY CONTRACTOR: _____

Sediment control measures for this contract will be implemented in accordance with Section 219 of the Specifications and as shown on F-99-52

CHECKBOX
AS-BUILT DATE _____
SURVEY AND DRAFTING DIVISION

Review for Howard Soil Conservation District and meets technical requirements.

Devin Simmons 1/20/99
NATURAL RESOURCES CONSERVATION SERVICE DATE

This plan is approved for soil erosion and sediment control by the Howard Soil Conservation District.

John R. Robertson 1/20/99
HOWARD SOIL CONSERVATION DISTRICT DATE

DEPARTMENT OF PUBLIC WORKS HOWARD COUNTY, MARYLAND <i>Robert B. ...</i> CHIEF, BUREAU OF UTILITIES DATE: 1-13-99	DEPARTMENT OF PLANNING & ZONING HOWARD COUNTY, MARYLAND <i>Arthur E. Muegge</i> CHIEF, DEVELOPMENT ENGINEERING DIVISION DATE: 1/20/99
--	---

RIEMER MUEGGE & ASSOCIATES, INC.
ENGINEERING • ENVIRONMENTAL SERVICES • PLANNING • SURVEYING
8818 Centre Park Drive, Columbia, Maryland 21045
tel 410.597.8900 fax 410.597.5282
97016/PWALS OFFICE.DWG

STATE OF MARYLAND
PROFESSIONAL ENGINEER
ARTHUR E. MUEGGE # 8707

DES: CJR	BY NO.	REVISION	DATE
DRN: KEV			
CHK: CJR			
DATE: 1/11/99			

TITLE SHEET

600' SCALE MAP NO. 34 BLOCK NO. 12

CLARKS GLEN NORTH
OUTFALL SEWER
5th ELECTION DISTRICT
HOWARD COUNTY, MARYLAND
CONTRACT 30-3718-D

SCALE AS SHOWN
SHEET 1 OF 3

M:\PROJECTS\97016\FINAL\OFFMS1.F11 Jan 8 15:54:27 1999 RIEMER MUEGGE & ASSOCIATES, INC.



DEPARTMENT OF PUBLIC WORKS
HOWARD COUNTY, MARYLAND

Robert Bauman 1-13-99
CHIEF, BUREAU OF UTILITIES DATE

DEPARTMENT OF PLANNING & ZONING
HOWARD COUNTY, MARYLAND

Arthur E. Muegge 1/22/99
CHIEF, DEVELOPMENT ENGINEERING DIVISION DATE

RIEMER MUEGGE & ASSOCIATES, INC.
ENGINEERING • ENVIRONMENTAL SERVICES • PLANNING • SURVEYING
8818 Centre Park Drive, Columbia, Maryland 21045
tel 410.997.8900 fax 410.997.9282
97016 OFFMS2.DWG

STATE OF MARYLAND
ARTHUR E. MUEGGE # 8707
PROFESSIONAL ENGINEER

DES:	CJR	BY	NO.	REVISION	DATE
DRN:	KEV				
CHK:	CJR				
DATE:	1/11/99				

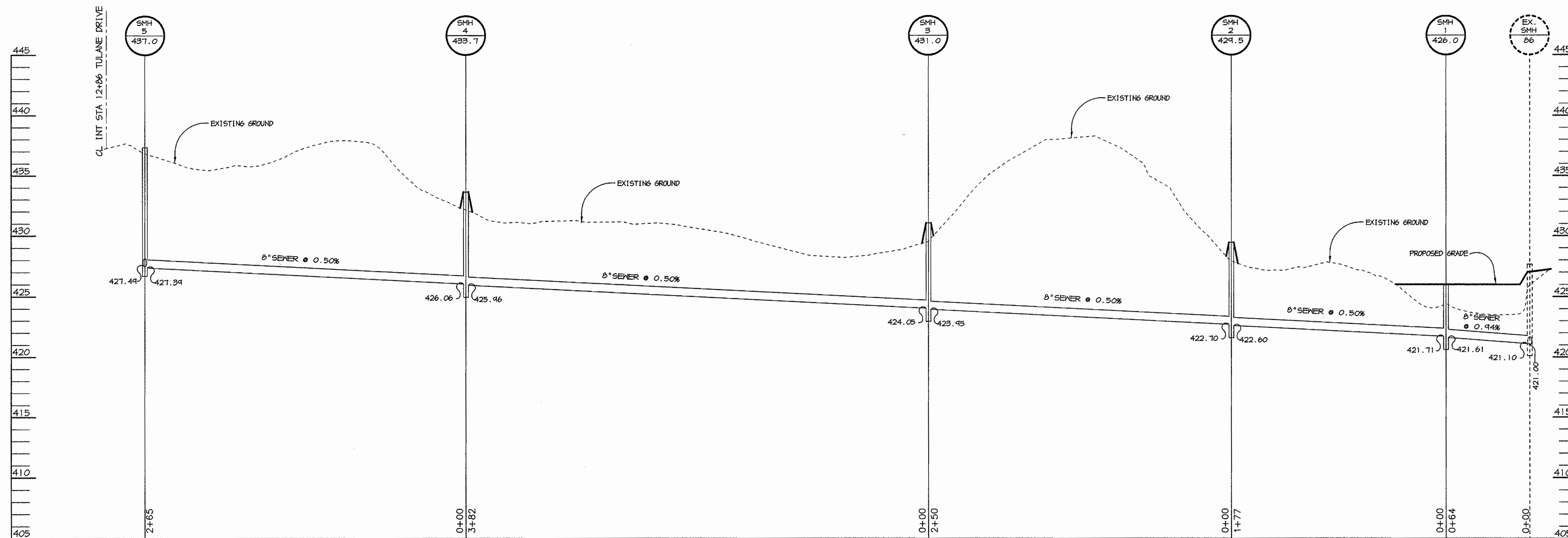
PLAN OF SEWER MAIN

60' SCALE MAP NO. 34 BLOCK NO. 12

CLARKS GLEN NORTH
OUTFALL SEWER
5th ELECTION DISTRICT
HOWARD COUNTY, MARYLAND
CONTRACT 30-3718-D

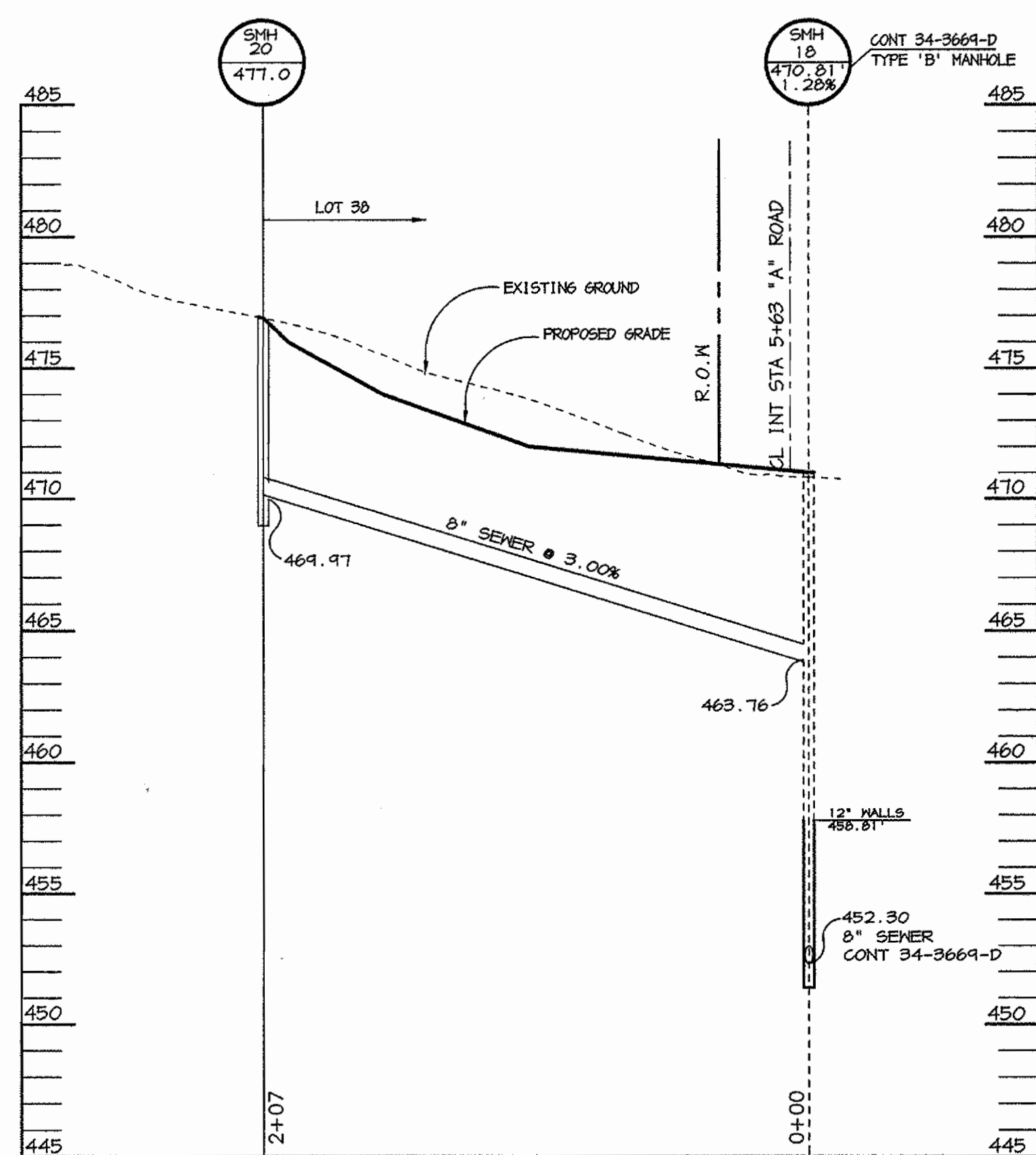
SCALE AS SHOWN
SHEET 2 OF 3

K:\PROJECTS\97016\FINALS\OFFMS2.F11 Jan 8 16:45:34 1999 RIEMER MUEGGE & ASSOCIATES, INC.



PROFILE

SCALE:
HOR. 1"=50'
VERT. 1"=5'



PROFILE

SCALE:
HOR. 1"=50'
VERT. 1"=5'

STRUCTURE SCHEDULE

STRUCTURE	TYPE	LOCATION	INV. IN	INV. OUT	TOP	REMARKS
SMH-1	STD. MH	* N 559,917.83 E 1,330,665.83	421.71 (0')	421.61 (0')	426.0	HOCO STD. DETAIL 6 5.12
SMH-2	STD. MH	* N 559,449.50 E 1,330,547.42	422.72 (0')	422.60 (0')	429.5	HOCO STD. DETAIL 6 5.12
SMH-3	STD. MH	* N 559,577.10 E 1,330,332.77	424.05 (0')	423.95 (0')	431.0	HOCO STD. DETAIL 6 5.12
SMH-4	STD. MH	* N 559,367.50 E 1,331,002.88	426.06 (0')	425.96 (0')	433.7	HOCO STD. DETAIL 6 5.12
SMH-5	STD. MH	* N 559,481.98 E 1,329,750.76	427.59 (0')	427.49 (0')	437.7	HOCO STD. DETAIL 6 5.12
SMH-20	STD. MH	* N 560,621.10 E 1,328,790.07	-	469.97 (0')	477.0	HOCO STD. DETAIL 6 5.12

NOTES: * LOCATION OF MANHOLES IS AT CENTER OF TOP COVER.

N: PROJECT 97016/FINALS/05FWS3 Fr1 Jan 8 16:24:30 1999 RIEMER MUEGGE & ASSOCIATES, INC.

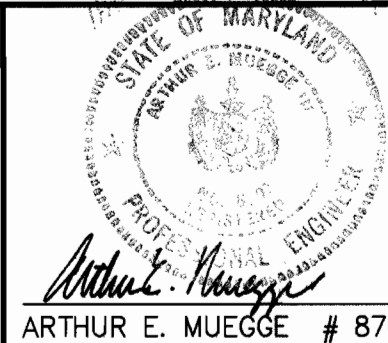
DEPARTMENT OF PUBLIC WORKS HOWARD COUNTY, MARYLAND <i>Robert J. Danner</i> CHIEF, BUREAU OF UTILITIES 1-13-99 DATE	DEPARTMENT OF PLANNING & ZONING HOWARD COUNTY, MARYLAND <i>Arthur E. Muegge</i> CHIEF, DEVELOPMENT ENGINEERING DIVISION 1/26/99 DATE	RIEMER MUEGGE & ASSOCIATES, INC. ENGINEERING • ENVIRONMENTAL SERVICES • PLANNING • SURVEYING 8818 Centre Park Drive, Columbia, Maryland 21045 tel 410.997.8900 fax 410.997.9282 97016/FINALS OFFWS3.DWG ARTHUR E. MUEGGE # 8707	DES: CJR DRN: KEV CHK: CJR DATE: 1/11/99 BY NO. REVISION DATE	PROFILES OF SEWER MAIN	CLARKS GLEN NORTH OUTFALL SEWER 5th ELECTION DISTRICT HOWARD COUNTY, MARYLAND CONTRACT 30-3718-D 600' SCALE MAP NO. 34 BLOCK NO. 12	SCALE AS SHOWN SHEET 3 OF 3
---	---	---	---	-----------------------------------	--	---



DEPARTMENT OF PUBLIC WORKS
HOWARD COUNTY, MARYLAND

DEPARTMENT OF PLANNING & ZONING
HOWARD COUNTY, MARYLAND

RIEMER MUEGGE & ASSOCIATES, INC.
ENGINEERING • ENVIRONMENTAL SERVICES • PLANNING • SURVEYING
8818 Centre Park Drive, Columbia, Maryland 21045
tel 410.997.8900 fax 410.997.9282
97016 OPW2.DWG



DES:	CJR				
DRN:	KEV				
CHK:	CJR				
DATE:	1/11/99				
BY:	CJR	ADJUST SEWER MH NUMBERING	10-19-99		
NO.		REVISION	DATE		

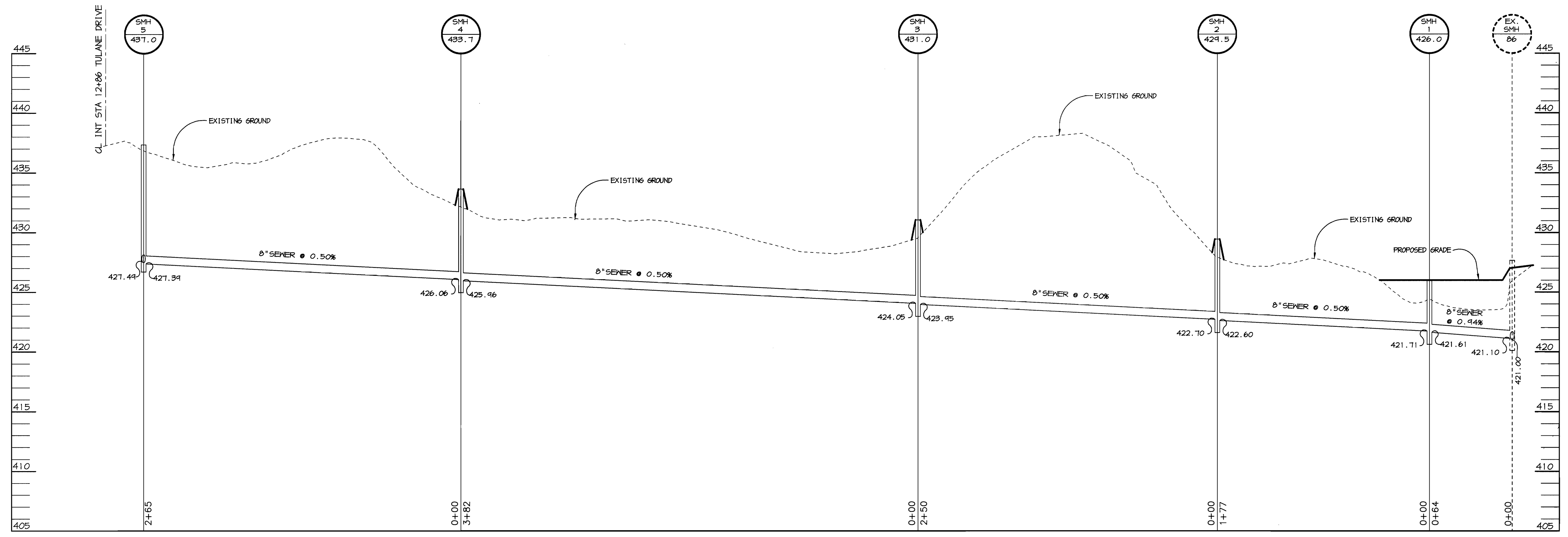
**PLAN OF
SEWER MAIN**

600' SCALE MAP NO. 34 BLOCK NO. 12

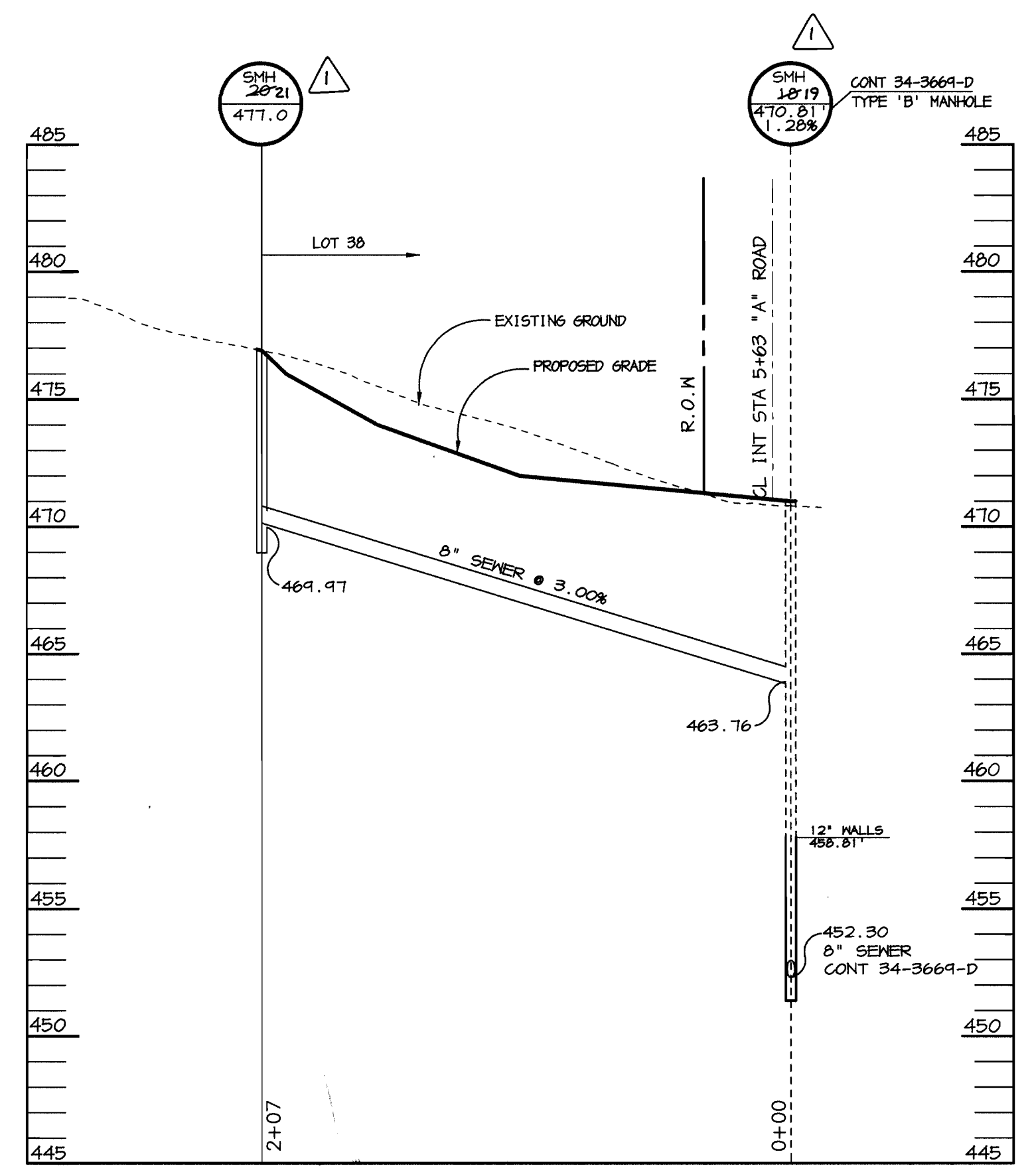
**CLARKS GLEN NORTH
OUTFALL SEWER**
5th ELECTION DISTRICT
HOWARD COUNTY, MARYLAND
CONTRACT 30-3718-D

SCALE
AS
SHOWN

SHEET
2 OF 3



PROFILE
SCALE:
HOR. 1"=50'
VERT. 1"=5'


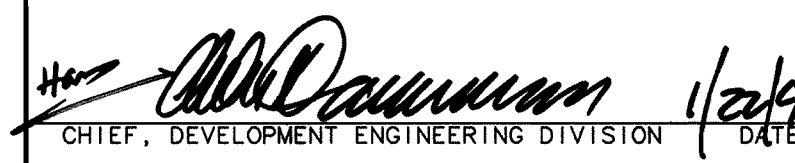



PROFILE
SCALE:
HOR. 1"=50'
VERT. 1"=5'

STRUCTURE SCHEDULE

STRUCTURE	TYPE	LOCATION	INV. IN	INV. OUT	TOP	REMARKS
SMH-1	STD. MH	* N 559,317.33 E 1,330,665.83	421.71 (8")	421.61 (8")	426.0	HOCO STD. DETAIL 6 5.12
SMH-2	STD. MH	* N 559,449.50 E 1,330,547.42	422.72 (8")	422.60 (8")	429.5	HOCO STD. DETAIL 6 5.12
SMH-3	STD. MH	* N 559,577.10 E 1,330,332.77	424.05 (8")	423.95 (8")	431.0	HOCO STD. DETAIL 6 5.12
SMH-4	STD. MH	* N 559,367.50 E 1,331,002.88	426.06 (8")	425.96 (8")	433.7	HOCO STD. DETAIL 6 5.12
SMH-5	STD. MH	* N 559,773.88 E 1,329,758.77	427.54 (8")	427.44 (8")	437.7	HOCO STD. DETAIL 6 5.12
SMH-2621	STD. MH	* N 560,621.10 E 1,328,790.07	-	469.97 (8")	477.0	HOCO STD. DETAIL 6 5.12

NOTES: * LOCATION OF MANHOLES IS AT CENTER OF TOP COVER.

DEPARTMENT OF PUBLIC WORKS HOWARD COUNTY, MARYLAND  1-13-99 CHIEF, BUREAU OF UTILITIES DATE	DEPARTMENT OF PLANNING & ZONING HOWARD COUNTY, MARYLAND  1/2/99 CHIEF, DEVELOPMENT ENGINEERING DIVISION DATE	RIEMER MUEGGE & ASSOCIATES, INC. ENGINEERING • ENVIRONMENTAL SERVICES • PLANNING • SURVEYING 8618 Centre Park Drive, Columbia, Maryland 21045 tel 410.997.8900 fax 410.997.9282 97016/FINALS OFFMS.DWG	 ARTHUR E. MUEGGE # 8707	DES: CJR				PROFILES OF SEWER MAIN	CLARKS GLEN NORTH OUTFALL SEWER 5th ELECTION DISTRICT HOWARD COUNTY, MARYLAND CONTRACT 30-3718-D	SCALE AS SHOWN
				DRN: KEV						DATE: 1/11/99

N:\PROJECT\97016\FINALS\OFFMS.DWG F1 Jan 8 16:24:30 1999 RIEMER MUEGGE & ASSOCIATES, INC.



M:\PROJECTS\97016\ENV\PLANS\OFFICE\F11 Jan 8 16:45:34 1999 RIEMER MUEGGE & ASSOCIATES, INC.

DEPARTMENT OF PUBLIC WORKS
HOWARD COUNTY, MARYLAND

Robert B. Berman 1-17-99
CHIEF, BUREAU OF UTILITIES DATE

DEPARTMENT OF PLANNING & ZONING
HOWARD COUNTY, MARYLAND

Arthur E. Muegge 1/22/99
CHIEF, DEVELOPMENT ENGINEERING DIVISION DATE

RIEMER MUEGGE & ASSOCIATES, INC.
ENGINEERING • ENVIRONMENTAL SERVICES • PLANNING • SURVEYING
8818 Centes Park Drive, Columbia, Maryland 21045
tel 410.997.8900 fax 410.997.9282
97016 OTTWS2.DWG

Arthur E. Muegge
ARTHUR E. MUEGGE # 8707

DES:	CJR				
DRN:	KEV				
CHK:	CJR				
DATE:	1/11/99				
BY:	CJR	ADJUST SEWER MH NUMBERING	10/19/99		
NO.		REVISION	DATE		

PLAN OF SEWER MAIN

600' SCALE MAP NO. 34 BLOCK NO. 12

**CLARKS GLEN NORTH
OUTFALL SEWER**
5th ELECTION DISTRICT
HOWARD COUNTY, MARYLAND
CONTRACT 30-3718-D

SCALE AS SHOWN

SHEET 2 OF 3