

# PUBLIC WATER AND SEWER CONSTRUCTION PLANS GROVEMONT

## PHASE 1

### 1st ELECTION DISTRICT HOWARD COUNTY, MARYLAND CONTRACT No. 14-3699-D

**BENCH MARKS NAD'83**  
 HO. CO. #311E  
 3/4" REBAR 0.5' BELOW SURFACE  
 5' SOUTHWEST OF ILCHESTER ROAD PAVING  
 500'± WEST OF WHARF LANE.  
 N 570852.3717' E 1376700.6467'  
 HO. CO. #311F  
 3/4" REBAR 0.5' BELOW SURFACE  
 9' SOUTHEAST OF ILCHESTER ROAD PAVING  
 250'± WEST OF BEECHWOOD ROAD  
 N 572335.3503' E 1377504.0332'  
 HO. CO. BM#2745004 ELEV. 364.78'  
 USED FOR VERTICAL CONTROL.

#### GENERAL NOTES

##### PART 1 - GENERAL

- APPROXIMATE LOCATION OF EXISTING MAINS ARE SHOWN. THE CONTRACTOR SHALL TAKE ALL NECESSARY PRECAUTIONS TO PROTECT EXISTING MAINS AND SERVICES AND MAINTAIN UNINTERRUPTED SUPPLY. ANY DAMAGE INCURRED SHALL BE REPAIRED IMMEDIATELY TO THE SATISFACTION OF THE ENGINEER AT THE CONTRACTOR'S EXPENSE. ALL HORIZONTAL CONTROLS ARE BASED ON MARYLAND STATE COORDINATES.
- ALL VERTICAL CONTROLS ARE BASED ON U.S.G.S. DATA.
- ALL PIPE ELEVATIONS SHOWN ARE INVERT ELEVATIONS.
- CLEAR ALL UTILITIES BY A MINIMUM OF 6". CLEAR ALL POLES BY 2'-0" MINIMUM OR TUNNEL AS REQUIRED. THE OWNER HAS CONTACTED THE UTILITY COMPANIES AND HAS MADE ARRANGEMENTS FOR BRACING OF POLES AS SHOWN ON THE DRAWINGS. IN THE EVENT THE CONTRACTOR'S WORK REQUIRES THE BRACING OF ADDITIONAL POLES, ANY COST INCURRED BY THE OWNER FOR BRACING OF ADDITIONAL POLES OR DAMAGES SHALL BE DEDUCTED FROM MONEY OWED THE CONTRACTOR. THE CONTRACTOR SHALL COORDINATE WITH THE UTILITY COMPANIES TO SCHEDULE THE BRACING OF THE POLES.
- FOR DETAILS NOT SHOWN ON THE DRAWINGS, AND FOR MATERIALS AND CONSTRUCTION METHODS USE HOWARD COUNTY DESIGN MANUAL VOLUME IV, STANDARD SPECIFICATIONS AND DETAIL FOR CONSTRUCTION (LATEST EDITION). THE CONTRACTOR SHALL HAVE A COPY OF VOLUME IV ON THE JOB.
- WHERE TEST PITS HAVE BEEN MADE ON EXISTING UTILITIES, THEY ARE NOTED BY THE SYMBOL AT THE LOCATION OF THE TEST PIT. A NOTE OR NOTES CONTAINING THE RESULTS OF THE TEST PIT OR PITS IS INCLUDED ON THE DRAWINGS. EXISTING UTILITIES IN THE VICINITY OF THE PROPOSED WORK FOR WHICH TEST PITS HAVE NOT BEEN DUG SHALL BE LOCATED BY THE CONTRACTOR TWO WEEKS IN ADVANCE OF CONSTRUCTION OPERATIONS AT HIS OWN EXPENSE. CONTRACTOR SHALL NOTIFY THE FOLLOWING UTILITY COMPANIES OR AGENCIES AT LEAST FIVE WORKING DAYS BEFORE STARTING WORK SHOWN ON THESE PLANS:  
 STATE HIGHWAY ADMINISTRATION.....531-5533  
 BALTIMORE GAS & ELECTRIC CO. ....850-4620  
 BALTIMORE GAS & ELECTRIC CO. ....1-800-257-7777  
 UNDERGROUND DAMAGE CONTROL.....787-9068  
 MISS UTILITY.....1-800-257-7777  
 COLONIAL PIPELINE CO.....795-1390  
 HOWARD CO. DEPT. OF PUBLIC WORKS.....313-4900  
 BUREAU OF UTILITIES.....
- TREES AND SHRUBS ARE TO BE PROTECTED FROM DAMAGE TO MAXIMUM EXTENT. TREES AND SHRUBS LOCATED WITHIN THE CONSTRUCTION STRIP ARE NOT TO BE REMOVED OR DAMAGED BY THE CONTRACTOR. CONTRACTOR SHALL REMOVE TREES, STUMPS AND ROOTS ALONG LINE OF EXCAVATION. PAYMENT FOR SUCH REMOVAL SHALL BE INCLUDED IN THE UNIT PRICE BID FOR CONSTRUCTION OF THE MAIN.
- PLACE REGULATION "MEN WORKING" AND WARNING SIGNS AS REQUIRED TO COMPLY WITH MARYLAND STATE HIGHWAY ADMINISTRATION MANUAL OF TRAFFIC CONTROL FOR HIGHWAY MAINTENANCE OPERATIONS.
- THE CONTRACTOR SHALL NOTIFY THE BUREAU OF HIGHWAYS, HOWARD COUNTY, AT (410) 313-2450 AT LEAST FIVE WORKING DAYS BEFORE ANY OPEN CUT OF ANY COUNTY ROAD OR BORING/JACKING OPERATION IN COUNTY ROADS FOR LAYING WATER/SEWER MAINS OR HOUSE CONNECTIONS. THE APPROVAL OF THESE DRAWINGS WILL CONSTITUTE COMPLIANCE WITH DPW REQUIREMENTS PER SECTION 18.114(a) OF THE HOWARD COUNTY CODE.

CERTIFICATES OF USE AND OCCUPANCY WILL NOT BE ISSUED FOR THE DEVELOPMENT UNTIL THE SEWAGE PUMPING STATION AND FORCE MAIN TO BE CONSTRUCTED UNDER CAPITAL PROJECT 9-6200, ROCKBURN PUMP STATION FORCE MAIN AND SEWER HAS BEEN RELEASED FOR SERVICE BY THE HOWARD COUNTY BUREAU OF UTILITIES.



WATER AND SEWER COUNTY CODE		TYPE OF BUILDING: SINGLE FAMILY DETACHED	
WATER CODE: D-03	SEWER CODE: 1254550	NUMBER OF LOTS: 121	NUMBER OF SHCS: 123
TEST GRADIENT: 700		DRAINAGE AREA: PATAPSCO	TREATMENT PLANT: PATAPSCO WASTEWATER TREATMENT PLANT

VICINITY MAP  
SCALE: 1" = 600'

#### LEGEND

- EXIST. WATER MAIN
- EXIST. SEWER MAIN
- EXIST. SEWER MANHOLE
- PROP. WATER MAIN
- PROP. SEWER MAIN
- PROP. STORM DRAIN (BY OTHERS)
- PROP. SEWER MANHOLE
- PROP. SEWER HOUSE CONNECTION
- PROP. WATER HOUSE CONNECTION (DOUBLE - 1 1/2" x 1")
- PROP. WATER HOUSE CONNECTION (SINGLE - 1")
- PROP. FIRE HYDRANT
- PROP. VALVE
- PROP. PLUG & BUTTRISS

QUANTITIES		AS-BUILT	
ITEMS	QUANTITIES ESTIMATED	QUANTITIES	TYPE MANUF./SUPPLIER
12" WATER	3304 L.F.	4,286.5	D.I.P. GRIFFIN MUNICIPAL
8" WATER	3160 L.F.	2,133.0	D.I.P. " "
6" WATER	226 L.F.	40.0	D.I.P. " "
4" WATER	1262 L.F.	1,986.5	D.I.P. " "
12" VALVES	3 EA.	5	KENNEDY MUNICIPAL
8" VALVES	6 EA.	7	" "
6" VALVES	12 EA.	10	" "
4" VALVES	6 EA.	6	" "
1 1/2" DRAIN	6 EA.	0	PRECAST
FIRE HYDRANTS	10 EA.	0	KENNEDY MUNICIPAL
1" WHC	610 L.F.	653.5	COPPER READING MUNICIPAL
1-1/2" WHC	1689 L.F.	1,882.0	COPPER READING MUNICIPAL
AIR RELEASE MH	1 EA.	1	ATLANTIC/G.A. MUNICIPAL
8" SEWER	7291 L.F.	7,074.1	P.V.C. I.M. MUNICIPAL
8" SEWER D.I.P.	1633 L.F.	1,597.0	D.I.P. GRIFFIN MUNICIPAL
MANHOLES	58 EA.	60	ATLANTIC/ATLANTIC
4" SHC	1025 L.F.	1,591.2	P.V.C.
4" DHC	1292 L.F.	540.2	P.V.C.

NAME OF UTILITY CONTRACTOR: C.J. MILLER  
 SURVEY AND DRAFTING DIVISION AS-BUILT DATE: 8/00

HOWARD SOIL CONSERVATION DISTRICT:  
REVIEWED FOR HOWARD SOIL CONSERVATION DISTRICT AND MEETS TECHNICAL REQUIREMENTS

*Cheryl Simmons* 3-8-99  
NATURAL RESOURCES CONSERVATION SERVICE DATE

THIS PLAN IS APPROVED FOR SOIL EROSION AND SEDIMENT CONTROL BY THE HOWARD SOIL CONSERVATION DISTRICT.  
*John P. Rauter* 3-8-99  
HOWARD SOIL CONSERVATION DISTRICT DATE

SEDIMENT CONTROL MEASURES FOR THIS CONTRACT WILL BE IMPLEMENTED IN ACCORDANCE WITH SECTION 219 OF THE HOWARD COUNTY STANDARD SPECIFICATIONS AND AS PER ROAD CONSTRUCTION PLANS F-99-22

DEPARTMENT OF PUBLIC WORKS  
HOWARD COUNTY, MARYLAND  
*Robert M. Baugher* 2-24-99  
CHIEF, BUREAU OF UTILITIES DATE

DEPARTMENT OF PLANNING AND ZONING  
HOWARD COUNTY, MARYLAND  
*John P. Rauter* 2/15/99  
CHIEF, DEVELOPMENT ENGINEERING DIVISION DATE

**BENCHMARK ENGINEERING, INC.**  
2480 BALTIMORE NATIONAL PIKE - SUITE 418 - ELICOTT CITY, MARYLAND 21043  
PHONE: 410-465-6105 FAX: 410-465-6844

*Donald Mean*  
REGISTERED PROFESSIONAL ENGINEER

DES: GWF/DBT			
DRN: DBT/YSL			
CHK: DAM	K.R.I.	2	AS-BUILT CONDITIONS ADDED TO PLAN 8/24/00
DATE: 7/98	B.E.I.	1	ADD 1" W.C. W.M. FOR L.S. SPRINKLER @ 25' LOT 180 2-15-00
DATE: 2/99	BY: NO.		REVISIONS

TITLE PAGE  
600 SCALE MAP NO. 31  
BLOCKS 17 AND 23

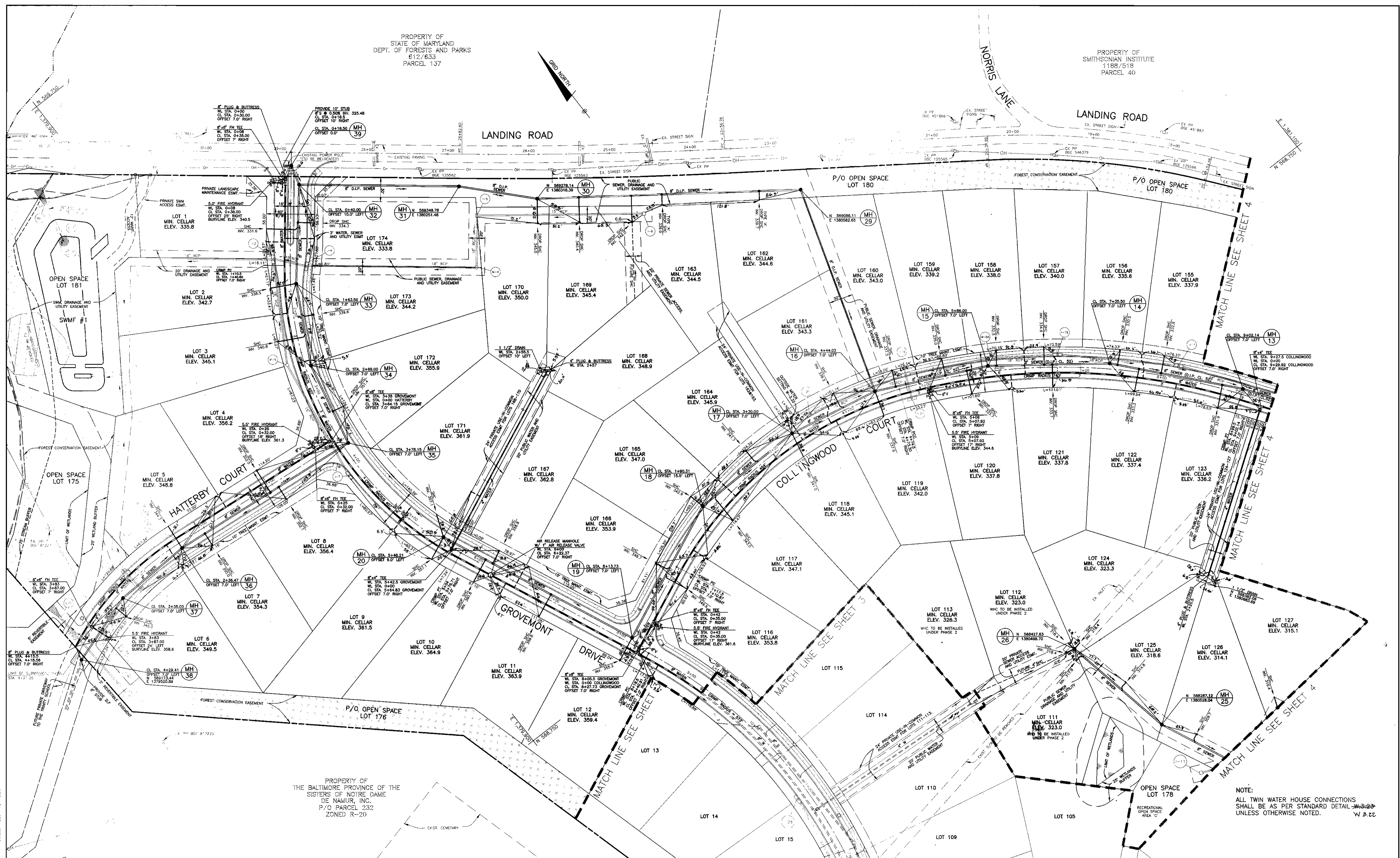
GROVEMONT  
PHASE 1  
LOTS 1-18, 58-75, 77-81, 94, AND 96-174  
ELECTION DISTRICT NO. 1  
CONTRACT NO. 14-3699-D  
SCALE: AS SHOWN  
SHEET NO. 1 OF 9

SHEET INDEX	
NO.	DESCRIPTION
1	TITLE SHEET
2-4	PLAN OF WATER AND SEWER MAINS
5-9	PROFILES OF WATER AND SEWER MAINS



PROPERTY OF  
STATE OF MARYLAND  
DEPT. OF FORESTS AND PARKS  
612/633  
PARCEL 137

PROPERTY OF  
SMITHSONIAN INSTITUTION  
1188/518  
PARCEL 40



PROPERTY OF  
THE BALTIMORE PROVINCE OF THE  
SISTERS OF NOIRE DAME  
DE NASHUR, INC.  
P/O PARCEL 232  
ZONED R-20

NOTE:  
ALL TWIN WATER HOUSE CONNECTIONS  
SHALL BE AS PER STANDARD DETAIL W-3-23  
UNLESS OTHERWISE NOTED.  
W B.22

DEPARTMENT OF PUBLIC WORKS  
HOWARD COUNTY, MARYLAND

*Robert W. Bainger* 2-24-99  
CHIEF, BUREAU OF UTILITIES

DEPARTMENT OF PLANNING AND ZONING  
HOWARD COUNTY, MARYLAND

*W. B. 22* 3/15/99  
CHIEF, DEVELOPMENT ENGINEERING DIVISION

**BENCHMARK**  
ENGINEERS - LAND SURVEYORS - PLANNERS  
**ENGINEERING, INC.**

8480 BALTIMORE NATIONAL PIKE • SUITE 418 • ELLICOTT CITY, MARYLAND 21045  
PHONE: 410-465-8105 FAX: 410-465-8844



DES:	GWF/DBT				
DRN:	DBT/YSL				
CHK:	DAM				
DATE:	7/98	BY:	K. I. 1	AS-BUILTS ADDED TO PLAN	8/6/00
	2/99			REVISIONS	

PLAN OF  
WATER AND SEWER MAINS

600 SCALE MAP NO. 31

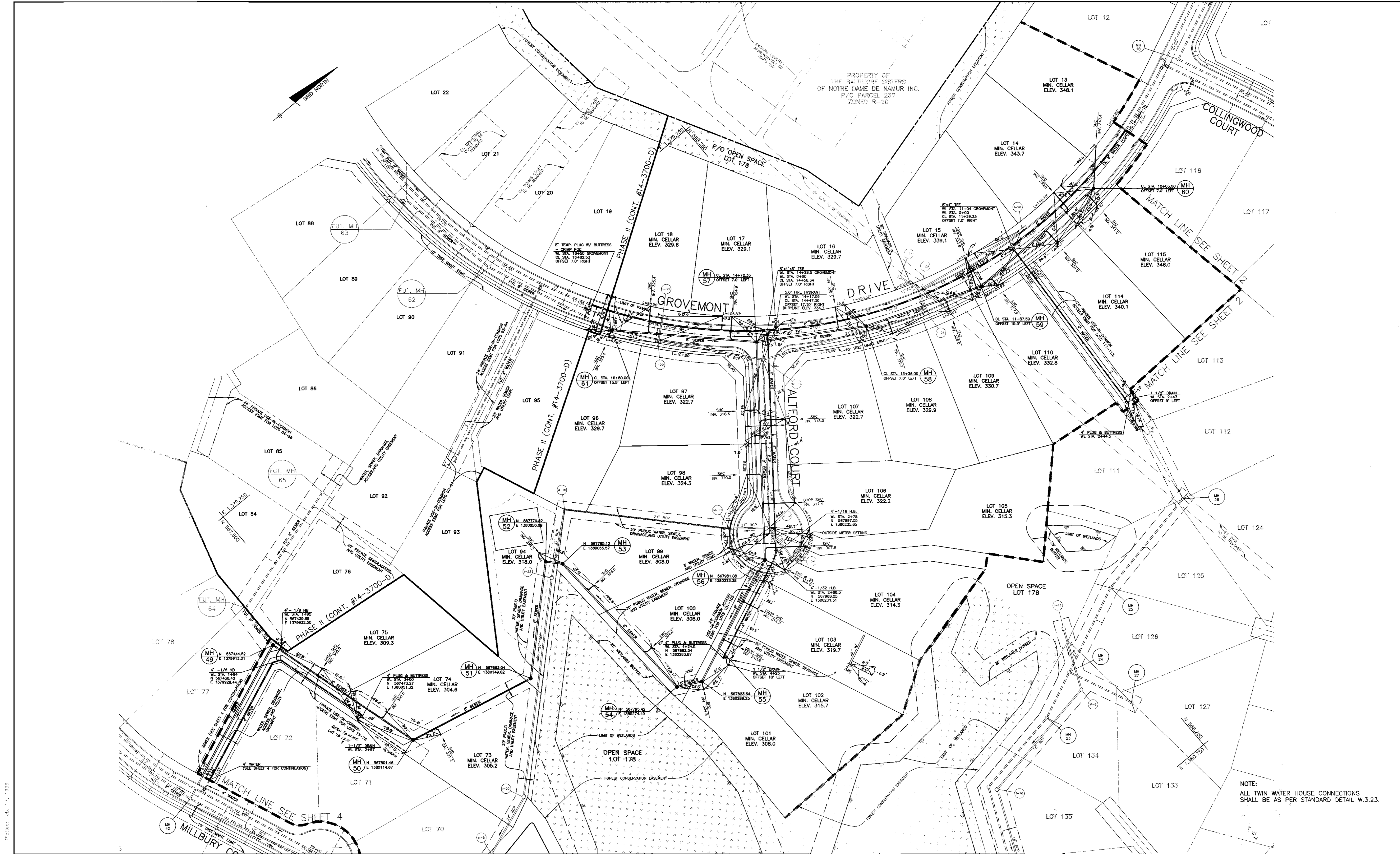
**GROVEMONT**  
PHASE 1  
LOTS 1-18, 58-75, 77-81, 94, AND 96-174  
ELECTION DISTRICT NO. 1

CONTRACT NO. 14-3699-D

SCALE:  
1" = 50'

SHEET NO.  
2 OF 9





NOTE:  
ALL TWIN WATER HOUSE CONNECTIONS  
SHALL BE AS PER STANDARD DETAIL W.3.23.

Printed: Feb. 11, 1999  
 Acad Draw: 6001503

DEPARTMENT OF PUBLIC WORKS  
HOWARD COUNTY, MARYLAND

*Robert W. Deinger* 2-24-99  
CHIEF, BUREAU OF UTILITIES

DEPARTMENT OF PLANNING AND ZONING  
HOWARD COUNTY, MARYLAND

*John W. Dammann* 3/15/99  
CHIEF, DEVELOPMENT ENGINEERING DIVISION

**BENCHMARK**  
ENGINEERS • LAND SURVEYORS • PLANNERS

*Donald M. ...*

8480 BALTIMORE NATIONAL PIKE • SUITE 410 • ELLICOTT CITY, MARYLAND 21043  
PHONE: 410-685-8105 FAX: 410-685-8644

DES:	GWF/DBT				
DRN:	DBT/YSL				
CHK:	DAM				
DATE:	7/98	K.C.I.	1	AS-BUILT CONDITIONS ADDED TO PLAN	8/19/00
	2/99	BY	NO.	REVISIONS	DATE

PLAN OF  
WATER AND SEWER MAINS

600 SCALE MAP NO. 31      BLOCKS 17 AND 23

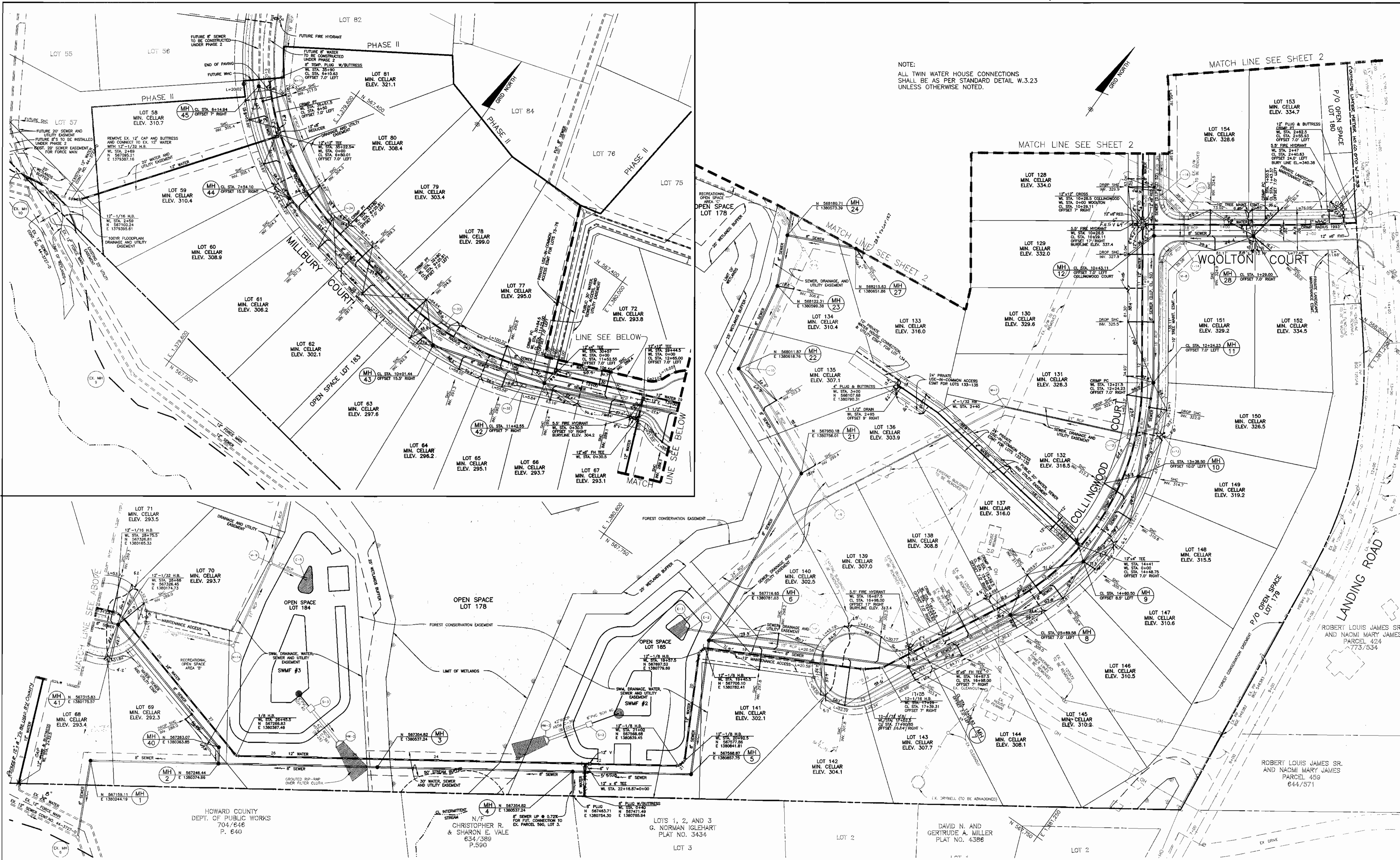
**GROVEMONT**  
PHASE 1  
LOTS 1-18, 58-75, 77-81, 94, AND 96-174  
ELECTION DISTRICT NO. 1

CONTRACT NO. 14-3699-D

SCALE:  
1" = 50'

SHEET NO.  
3 OF 9





NOTE:  
ALL TWIN WATER HOUSE CONNECTIONS  
SHALL BE AS PER STANDARD DETAIL W.3.23  
UNLESS OTHERWISE NOTED.

Plotted: Feb. 17, 1999  
 Acad. Dwg.: 600/S04

DEPARTMENT OF PUBLIC WORKS  
HOWARD COUNTY, MARYLAND

*Robert M. Bainger* 2-24-99  
CHIEF, BUREAU OF UTILITIES

DEPARTMENT OF PLANNING AND ZONING  
HOWARD COUNTY, MARYLAND

*Chad Dummer* 2/24/99  
CHIEF, DEVELOPMENT ENGINEERING DIVISION

**BENCHMARK**  
ENGINEERING, INC.

8480 BALTIMORE NATIONAL PIKE - SUITE 418 - BELTSVILLE CITY, MARYLAND 21154  
PHONE: 410-445-8100 FAX: 410-445-8644



DES:	GWF/DBT				
DRN:	DBT/YSL				
CHK:	DAM	KCI	Z	ASBUILT CONDITIONS ADDED TO PLAN	8-25-00
DATE:	7/98	BEI	1	ADD 1" W.C. W/IN FOR L.S. SPRINKLER C.O.S. LOT 180	2-15-00
				NO.	REVISIONS
				DATE	600 SCALE MAP NO. 31

DAVID N. AND GERTRUDE A. MILLER  
PLAT NO. 4386

LOT 2

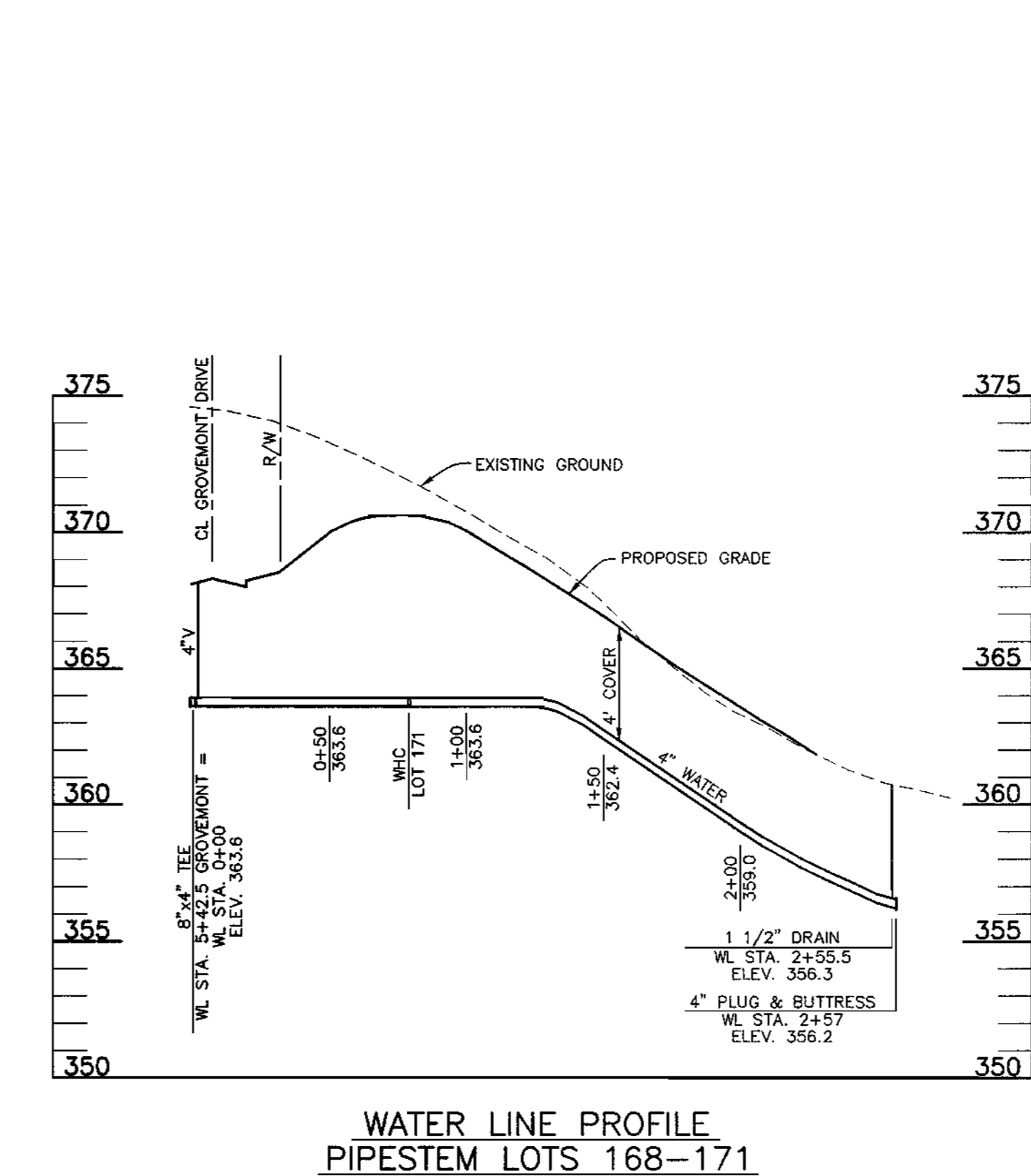
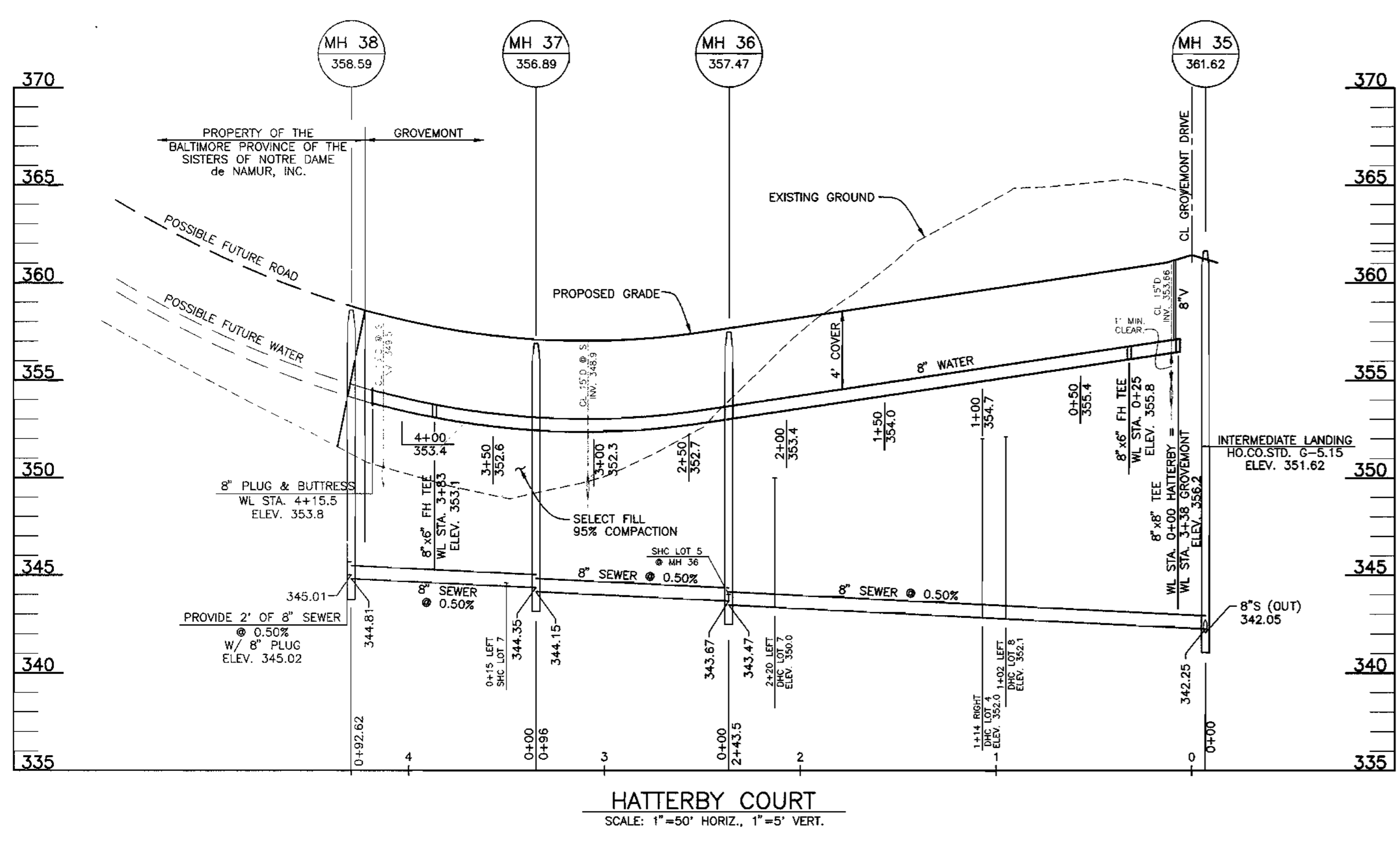
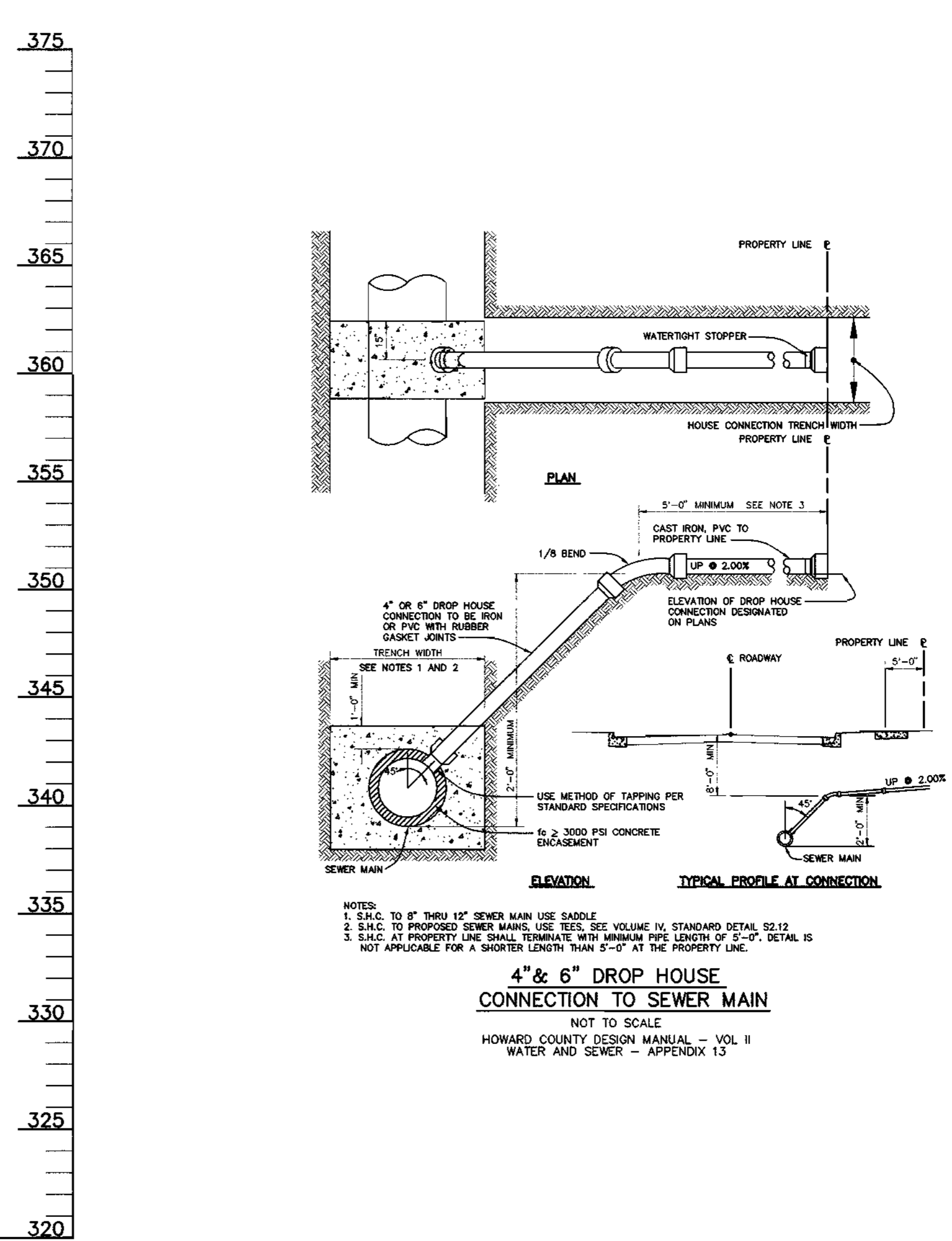
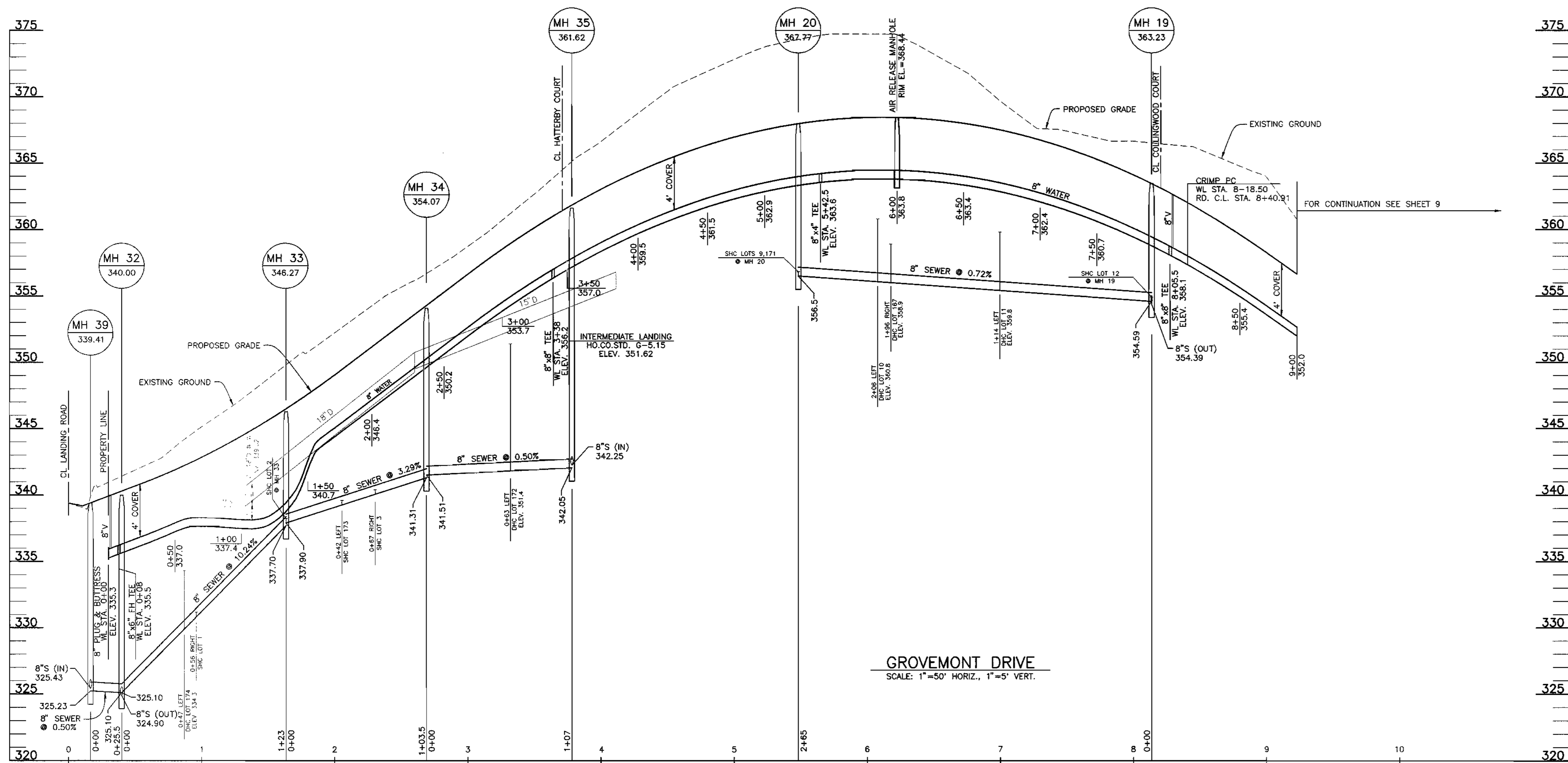
**GROVEMONT**  
PHASE 1  
LOTS 1-18, 58-75, 77-81, 94, AND 96-174  
ELECTION DISTRICT NO. 1

CONTRACT NO. 14-3699-D

SCALE:  
1" = 50'

SHEET NO.  
4 OF 9



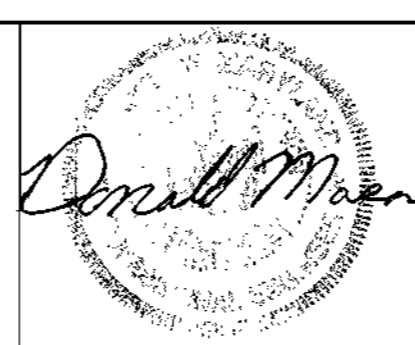


Acad Dwg: 6001525  
 Plotted: Feb. 17, 1999

DEPARTMENT OF PUBLIC WORKS  
 HOWARD COUNTY, MARYLAND  
 Robert Benjamin 2-24-99  
 CHIEF, BUREAU OF UTILITIES DATE

DEPARTMENT OF PLANNING AND ZONING  
 HOWARD COUNTY, MARYLAND  
 John Dammann 3/15/99  
 CHIEF, DEVELOPMENT ENGINEERING DIVISION DATE

**BENCHMARK**  
 ENGINEERS • LAND SURVEYORS • PLANNERS  
 ENGINEERING, INC.  
 8480 BALTIMORE NATIONAL PIKE • SUITE 418 • ELICOTT CITY, MARYLAND 21043  
 PHONE: 410-465-6105 FAX: 410-465-6614

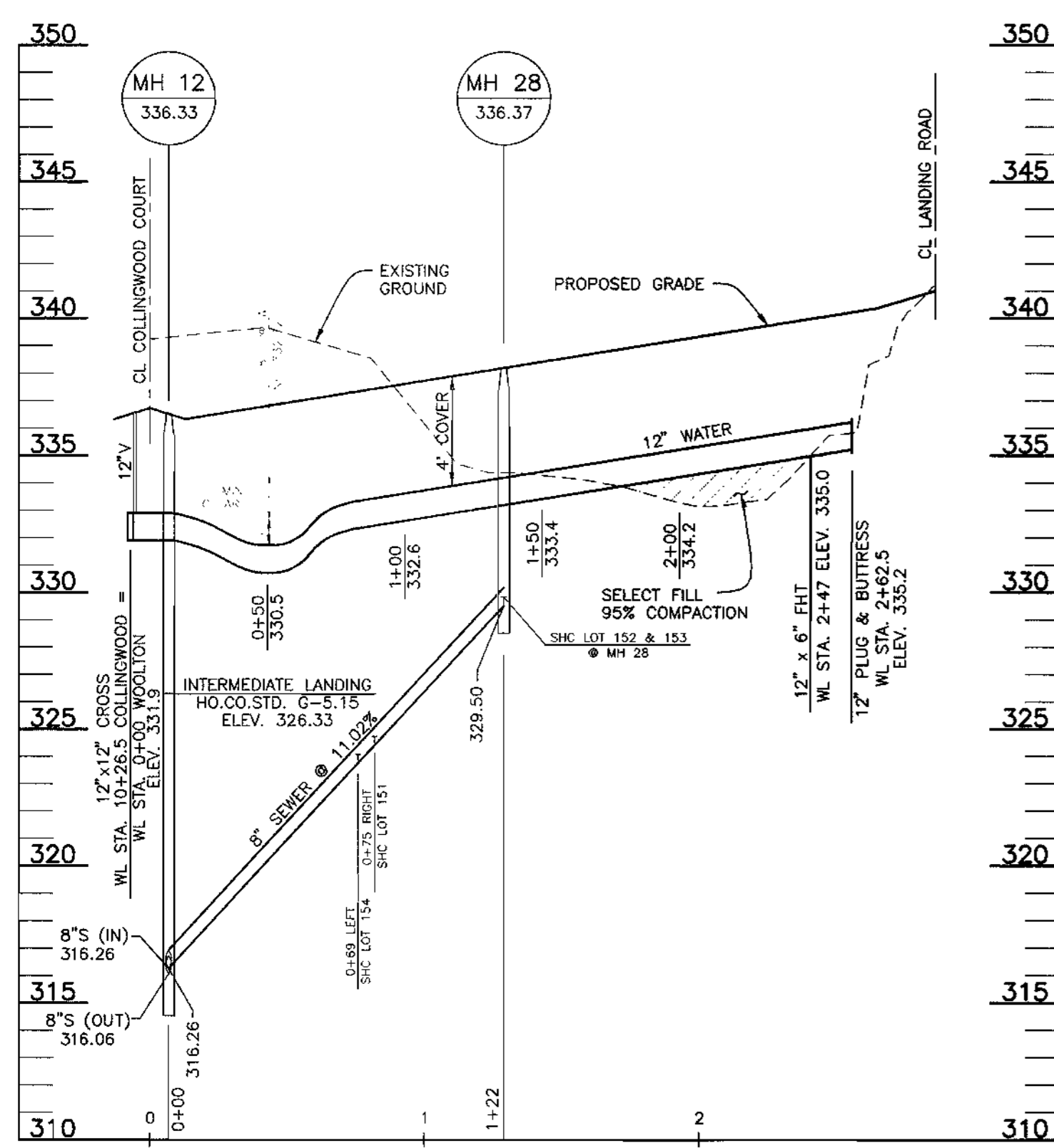
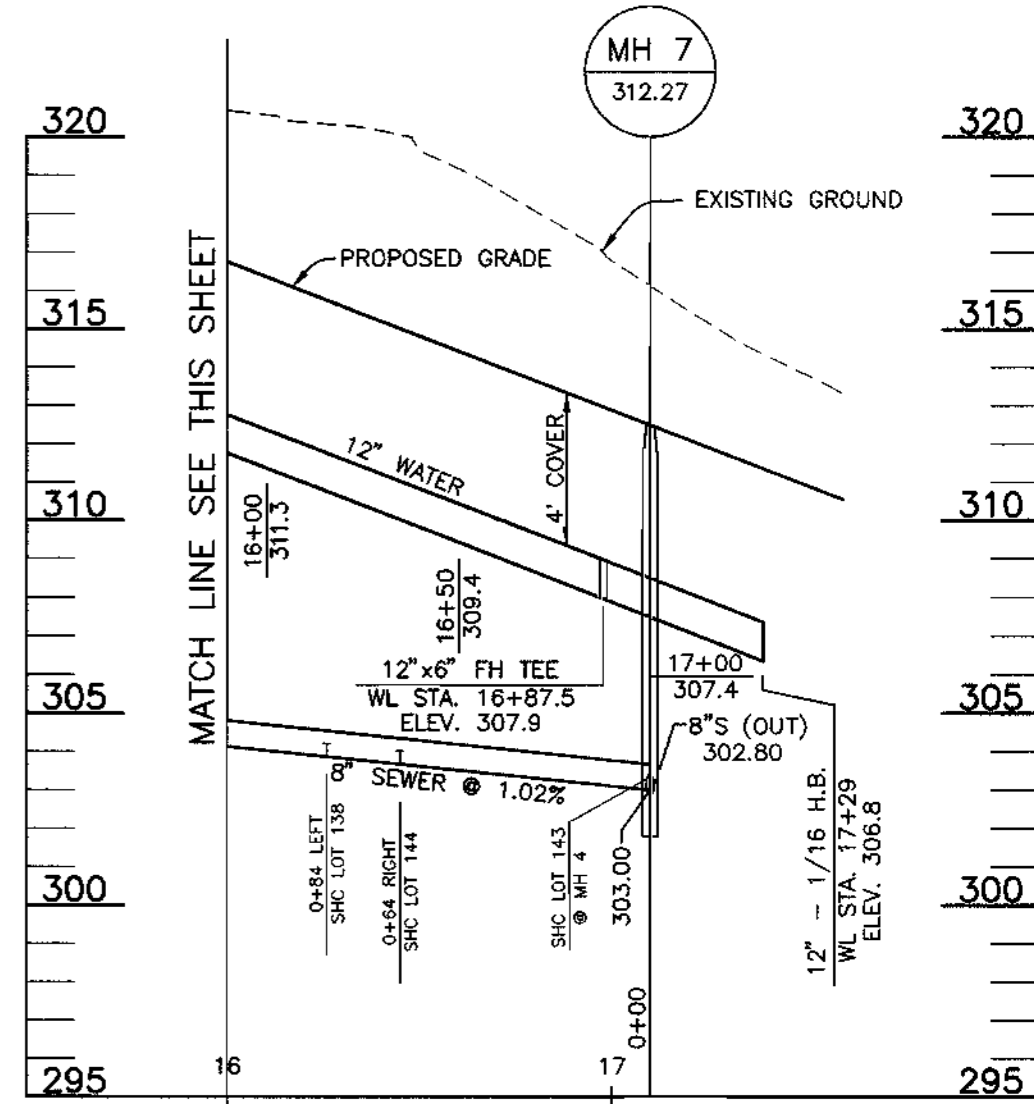
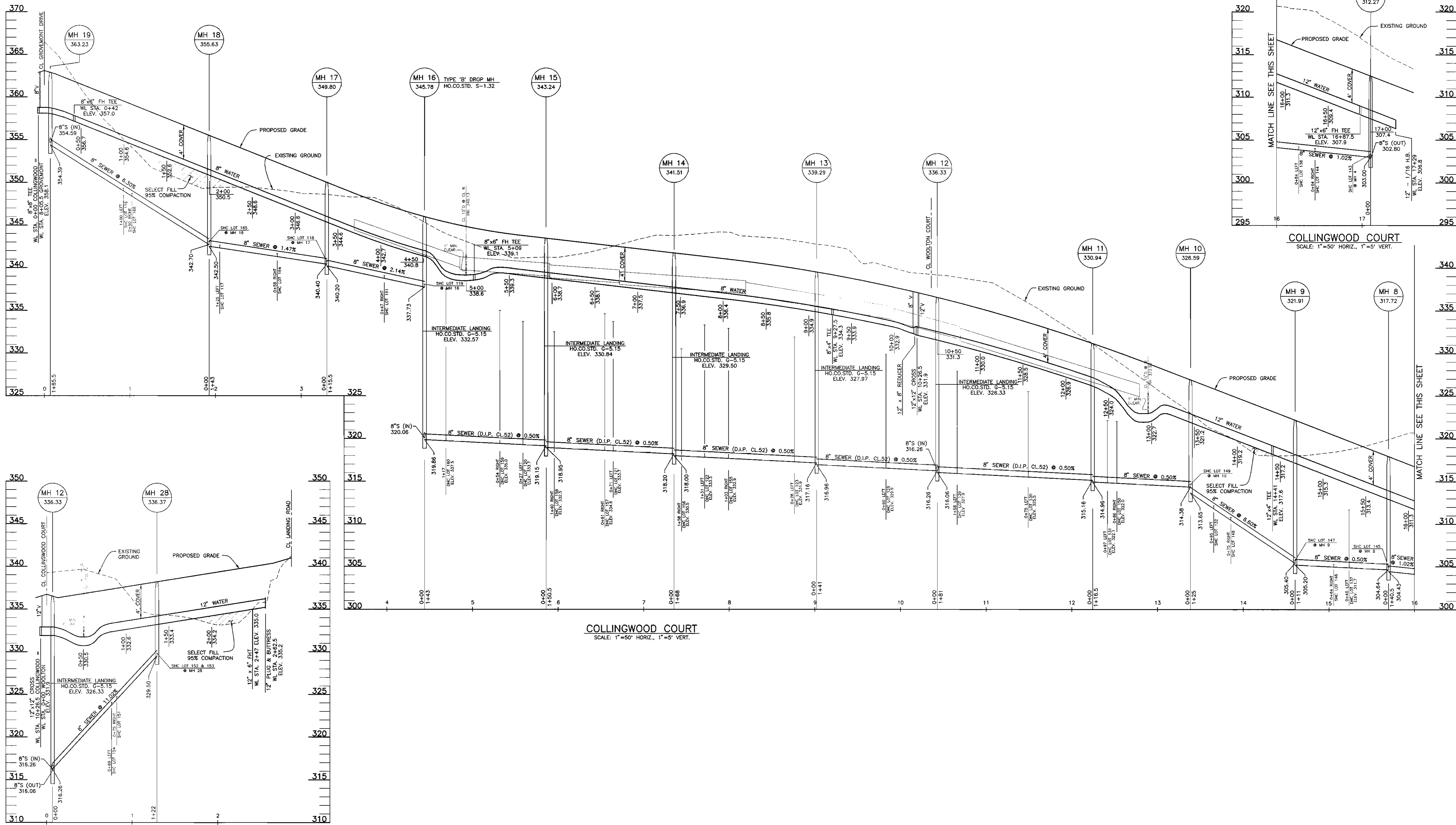


DES:	GWF/DBT				
DRN:	DBT/YSL				
CHK:	DAM				
DATE:	7/98				
	2/99	BY	NO.	REVISIONS	DATE

PROFILES OF  
 WATER AND SEWER MAINS  
 600 SCALE MAP NO. 31 BLOCKS 17 AND 23

**GROVEMONT**  
 PHASE 1  
 LOTS 1-18, 58-75, 77-81, 94, AND 96-174  
 ELECTION DISTRICT NO. 1  
 CONTRACT NO. 14-3699-D

SCALE:  
 1" = 50' HORIZ.  
 1" = 5' VERT.  
 SHEET NO.  
 5 OF 9



COLLINGWOOD COURT  
SCALE: 1"=50' HORIZ., 1"=5' VERT.

WOOLTON COURT  
SCALE: 1"=50' HORIZ., 1"=5' VERT.

COLLINGWOOD COURT  
SCALE: 1"=50' HORIZ., 1"=5' VERT.

Printed: Feb. 17, 1999

DEPARTMENT OF PUBLIC WORKS  
HOWARD COUNTY, MARYLAND

DEPARTMENT OF PLANNING AND ZONING  
HOWARD COUNTY, MARYLAND

**BENCHMARK**  
ENGINEERS - LAND SURVEYORS - PLANNERS  
**ENGINEERING, INC.**



DES:	GWF/DBT				
DRN:	DBT/YSL				
CHK:	DAM				
DATE:	7/98				
	2/99	BY	NO.	REVISIONS	DATE

PROFILES OF  
WATER AND SEWER MAINS

**GROVEMONT**  
PHASE 1  
LOTS 1-18, 58-75, 77-81, 94, AND 96-174  
ELECTION DISTRICT NO. 1  
CONTRACT NO. 14-3699-D

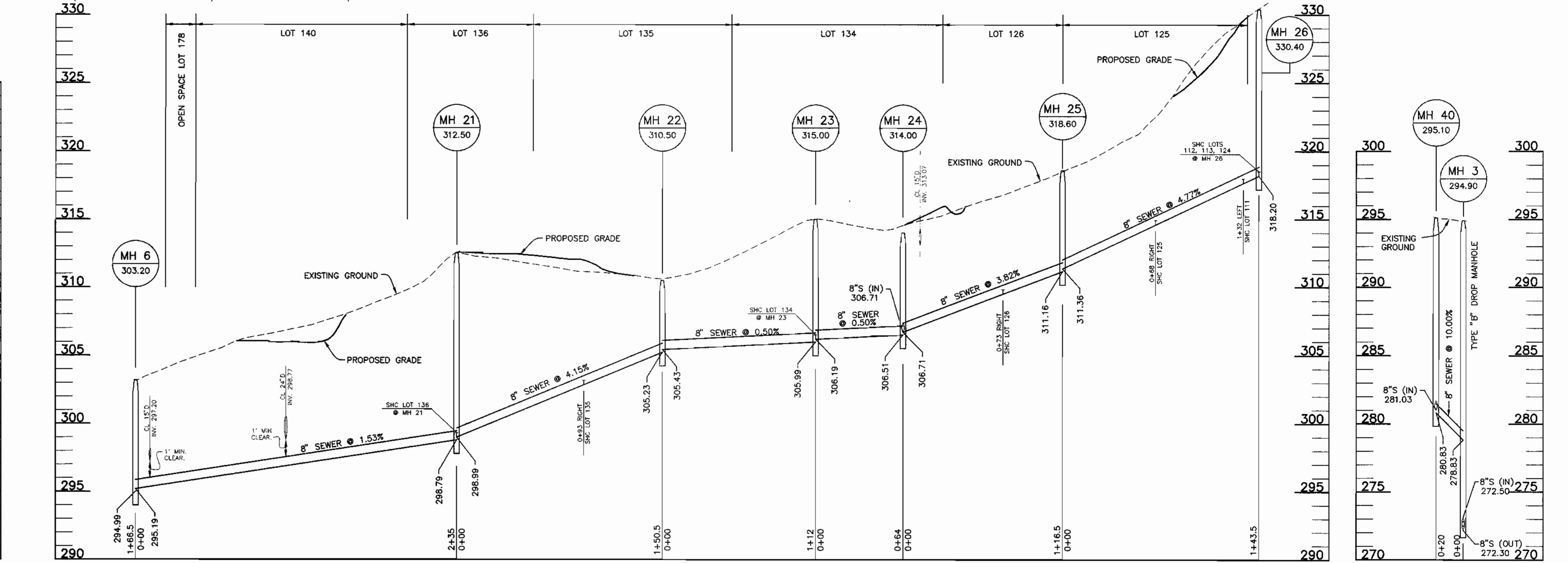
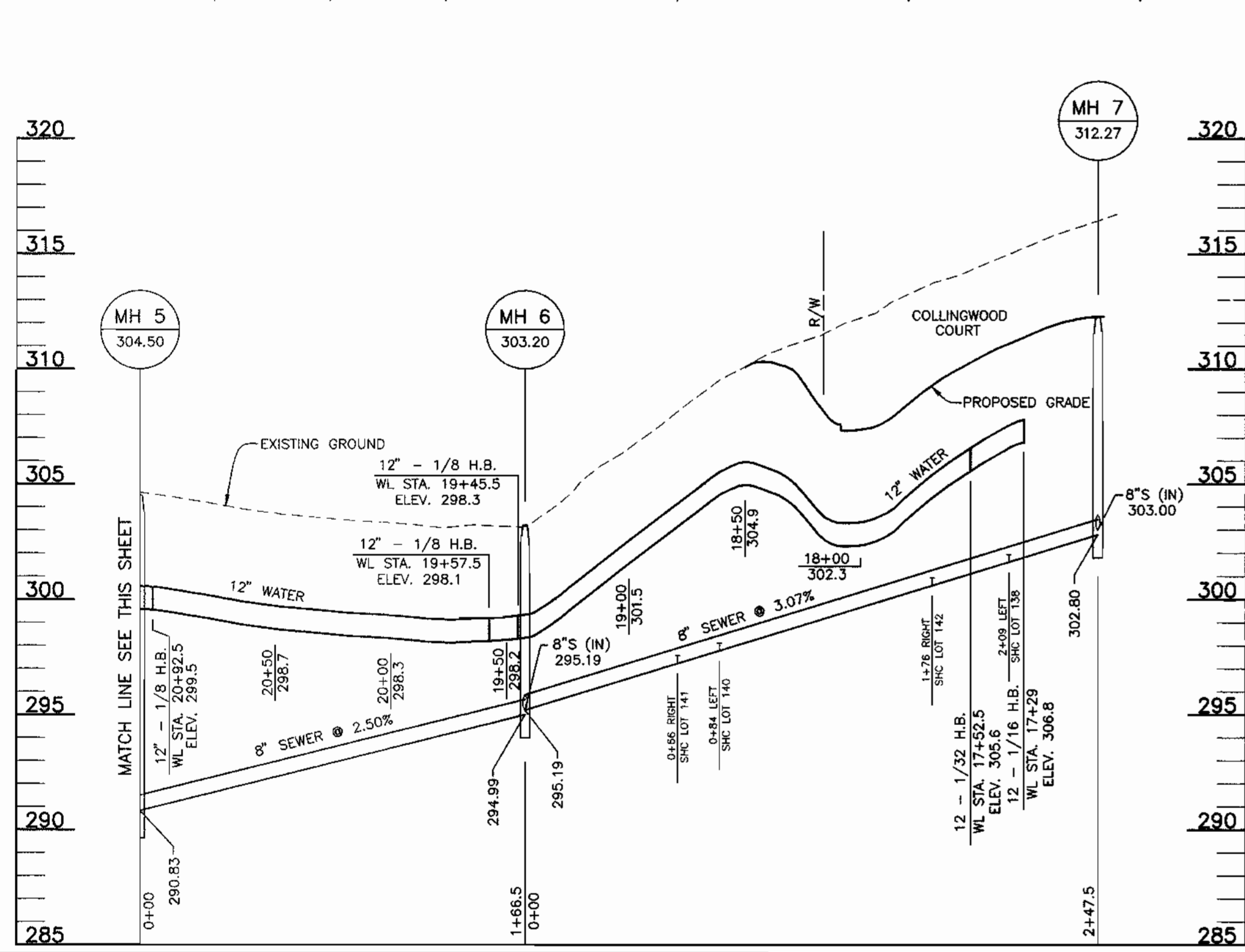
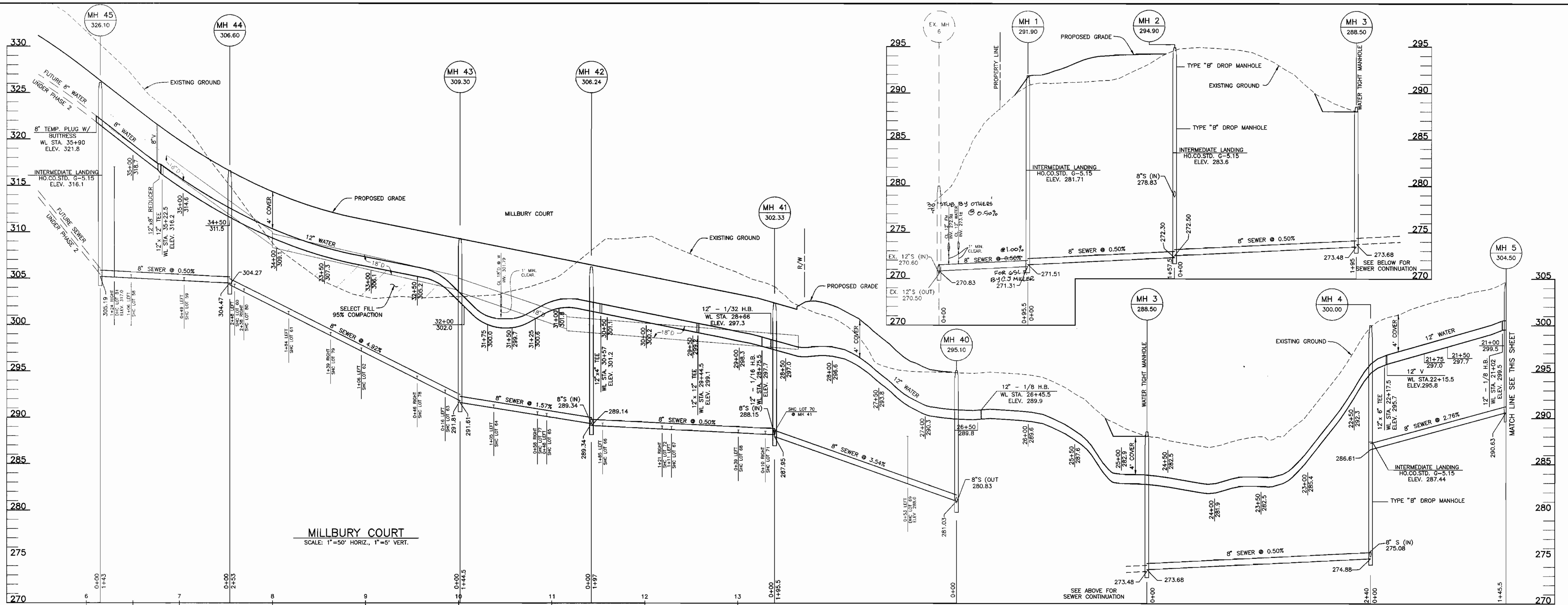
SCALE:  
1" = 50' HORIZ.  
1" = 5' VERT.  
SHEET NO.  
6 OF 9

*Robert Jennings* 2-24-99  
CHIEF, BUREAU OF UTILITIES DATE

*Donald M. Mason* 3/15/99  
CHIEF, DEVELOPMENT ENGINEERING DIVISION DATE

6480 BALTIMORE NATIONAL PIKE • SUITE 418 • ELLICOTT CITY, MARYLAND 21043  
PHONE: 410-485-6105 FAX: 410-485-0844

600 SCALE MAP NO. 31 BLOCKS 17 AND 23



Revised: Feb. 7, 1999

DEPARTMENT OF PUBLIC WORKS  
HOWARD COUNTY, MARYLAND

*Robert W. Bainger* 2-24-99  
CHIEF, BUREAU OF UTILITIES

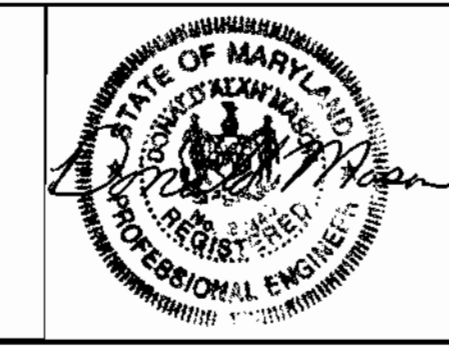
DEPARTMENT OF PLANNING AND ZONING  
HOWARD COUNTY, MARYLAND

*John D. ...* 3/1/99  
CHIEF, DEVELOPMENT ENGINEERING DIVISION

**BENCHMARK**  
ENGINEERS • LAND SURVEYORS • PLANNERS

**ENGINEERING, INC.**

2480 BALTIMORE NATIONAL PIKE • SUITE 418 • ELLICOTT CITY, MARYLAND 21104  
PHONE: 410-485-8105 FAX: 410-485-8844



DES:	GWF/DBT				
DRN:	DBT/YSL				
CHK:	DAM				
DATE:	7/98	KCI	1	ASBUILT CONDITIONS ADDED TO PLAN	8/21/00
	2/99	BY	NO.	REVISIONS	DATE

PROFILES OF  
WATER AND SEWER MAINS

600 SCALE MAP NO. 31 BLOCKS 17 AND 23

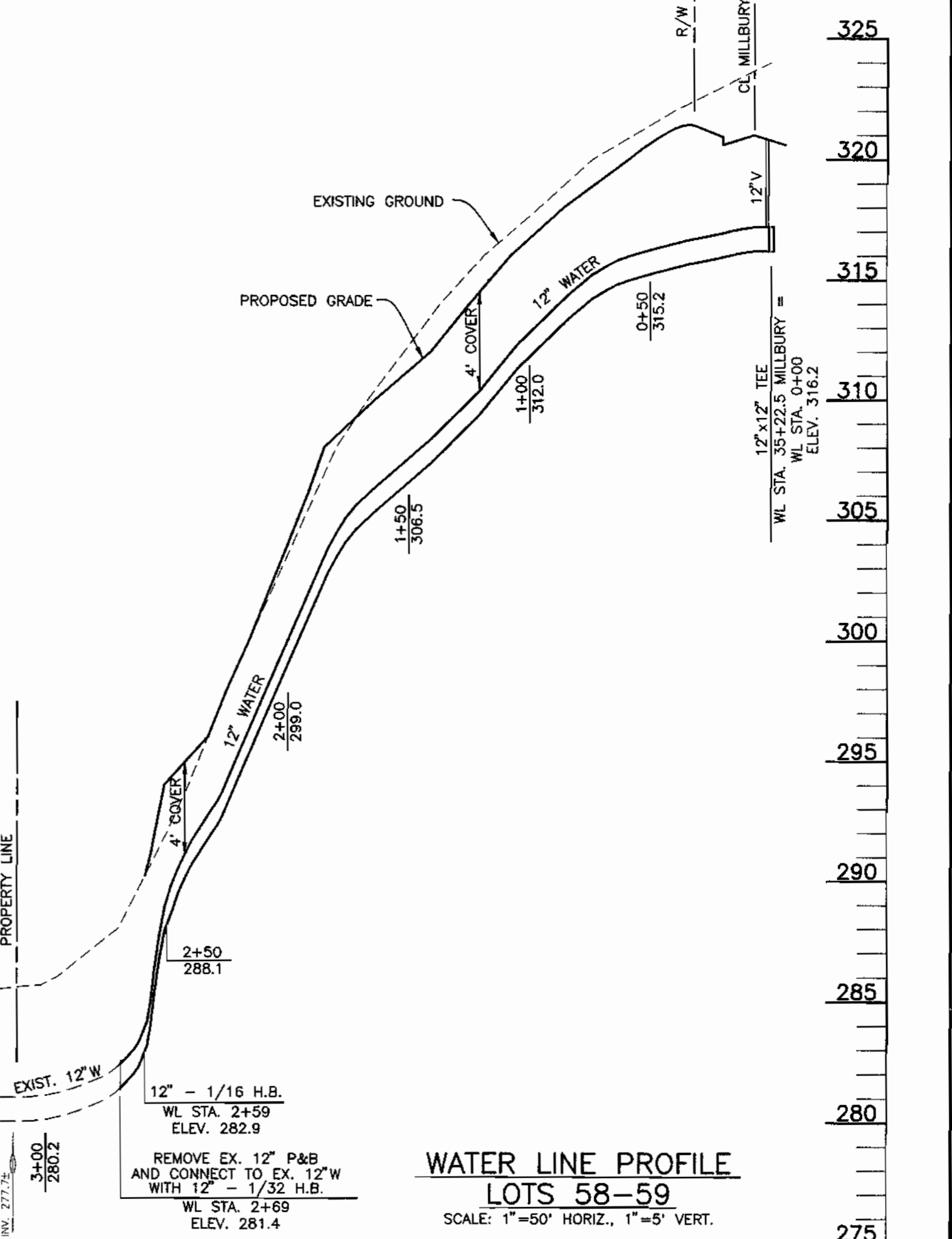
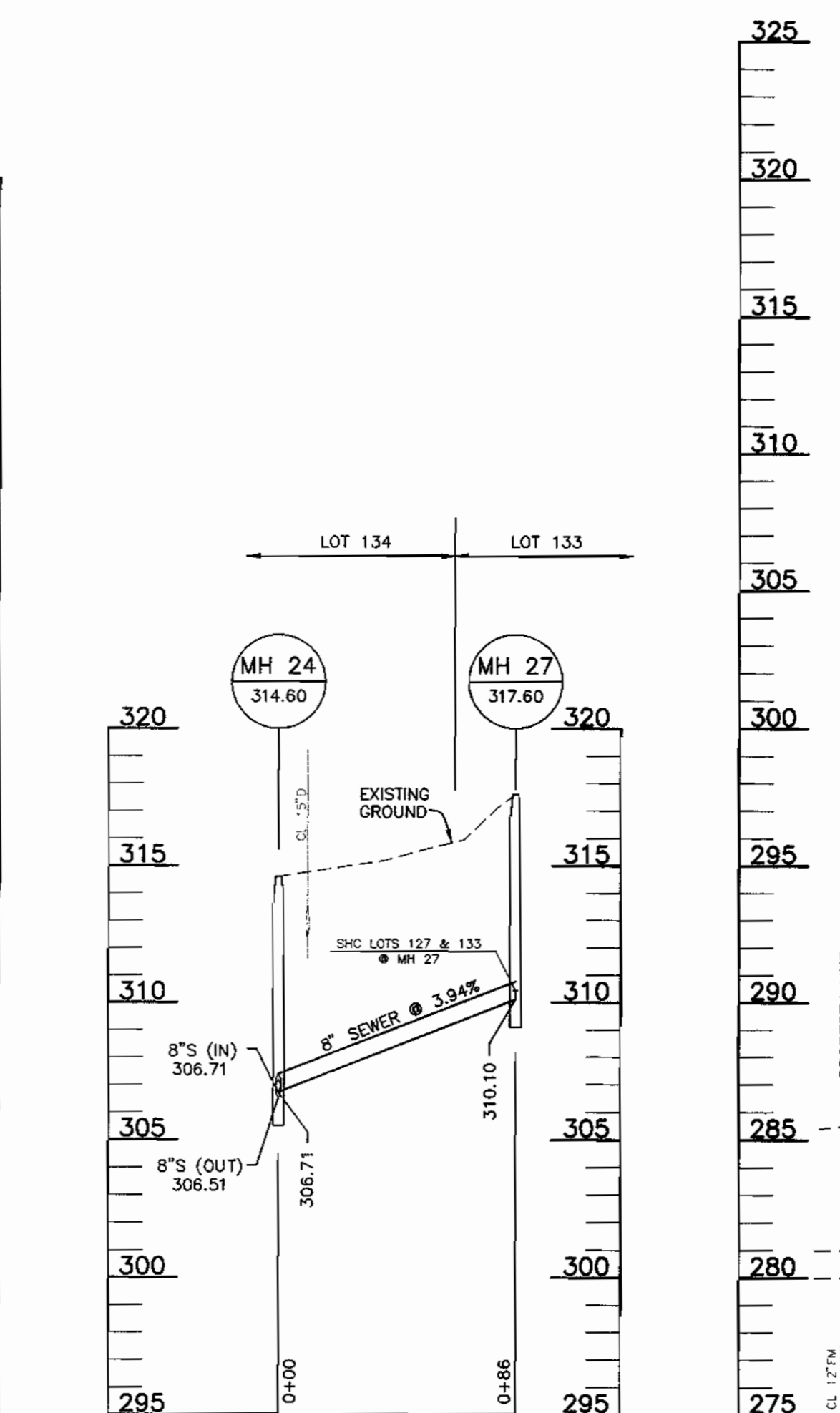
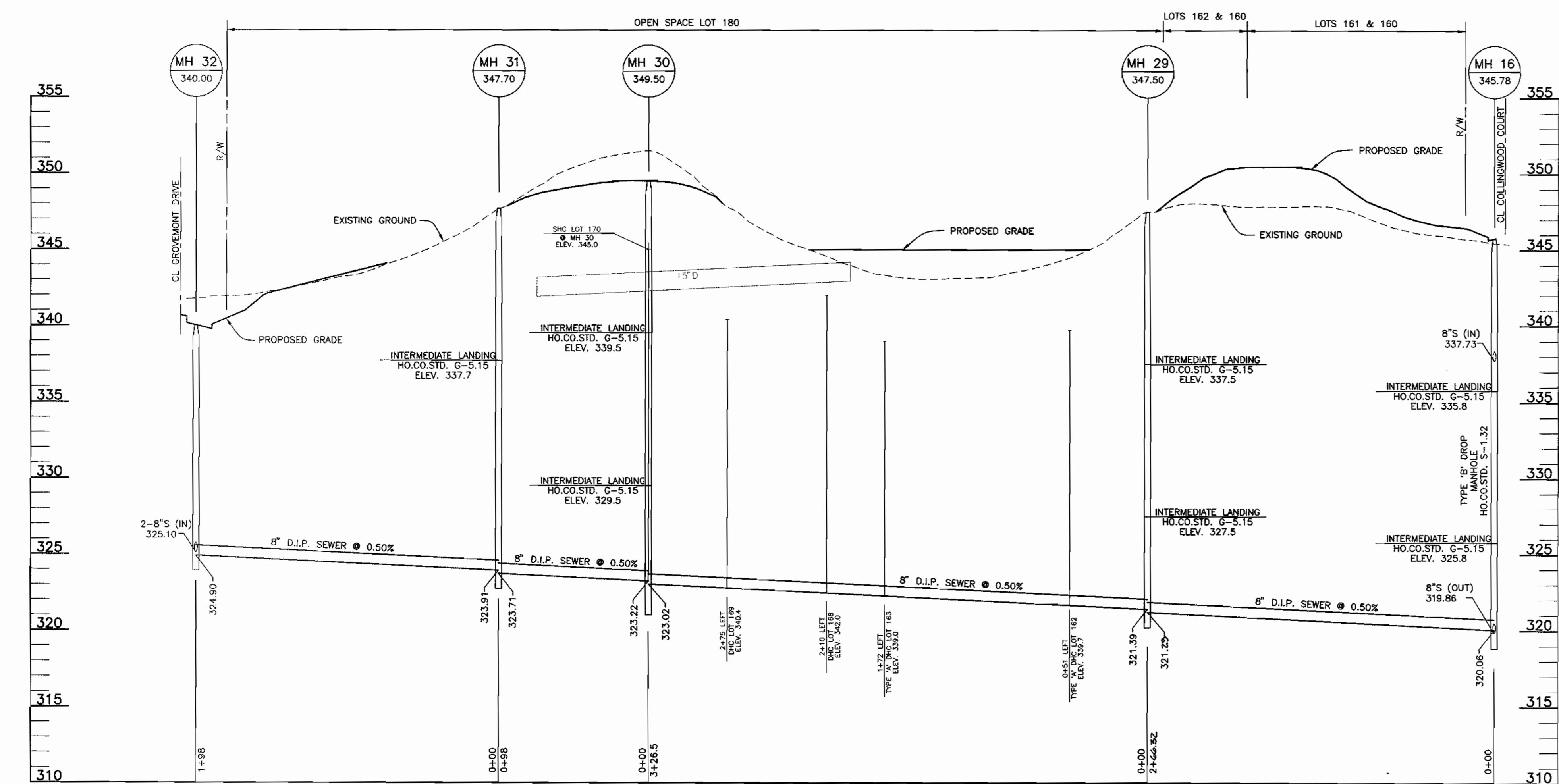
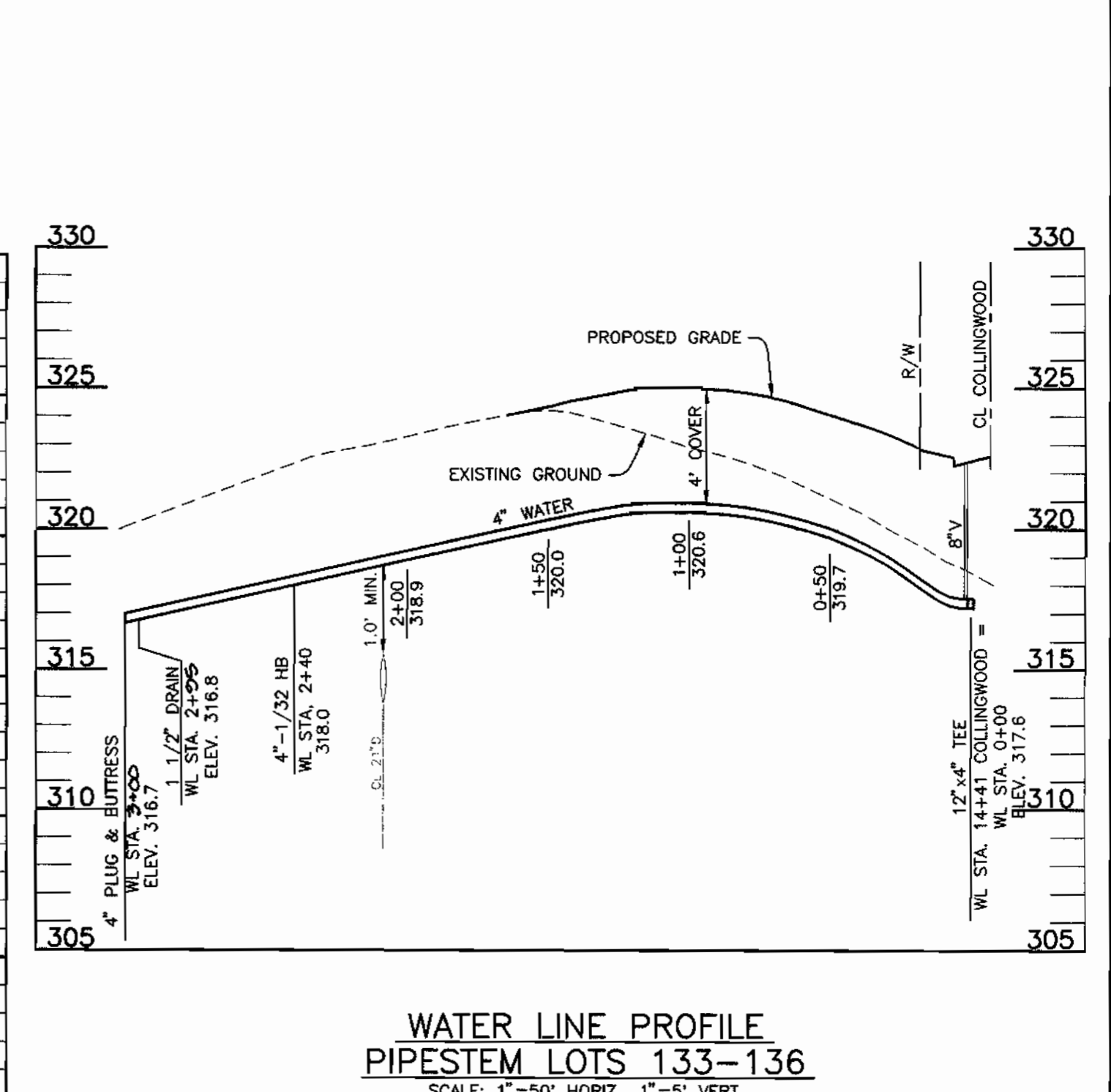
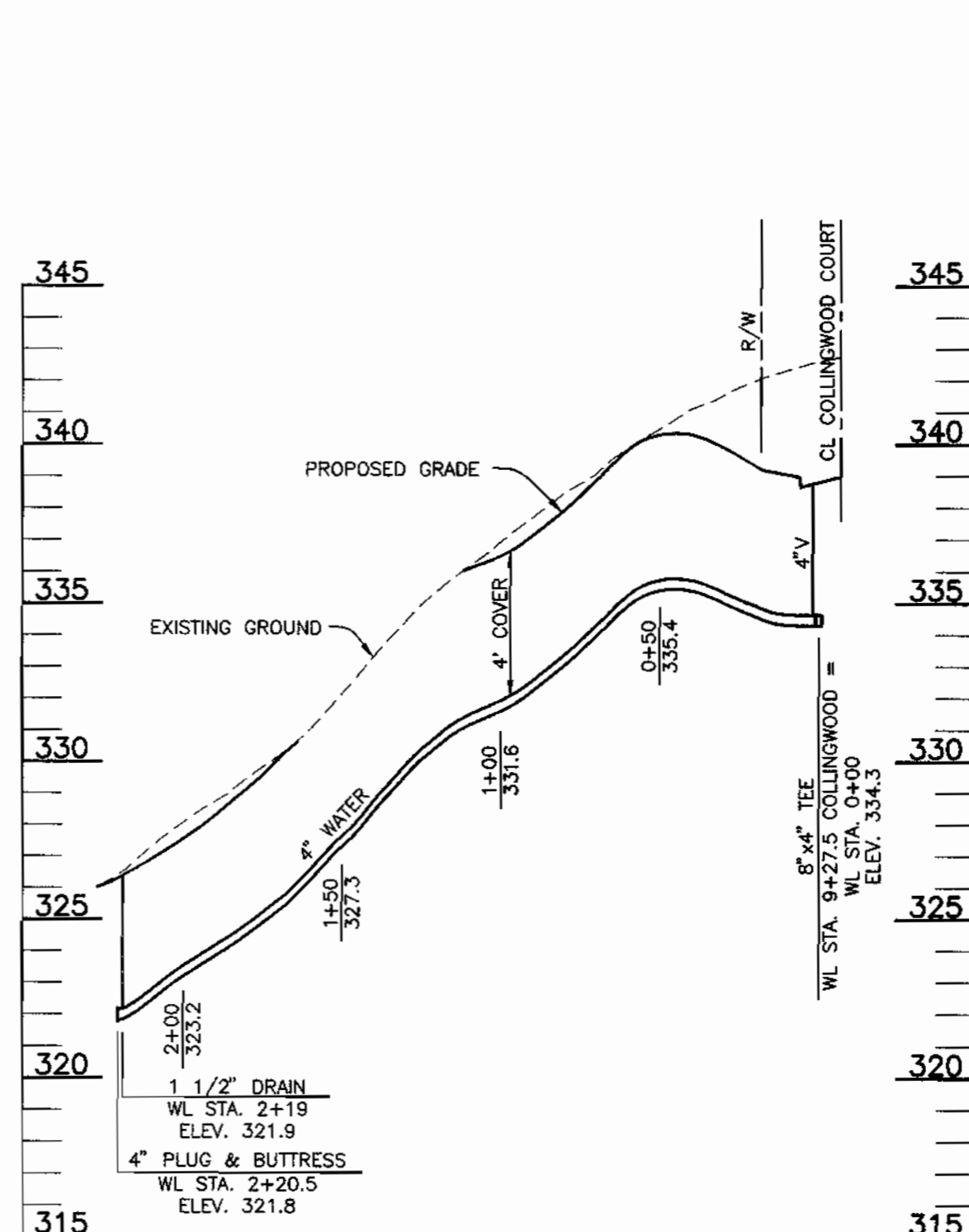
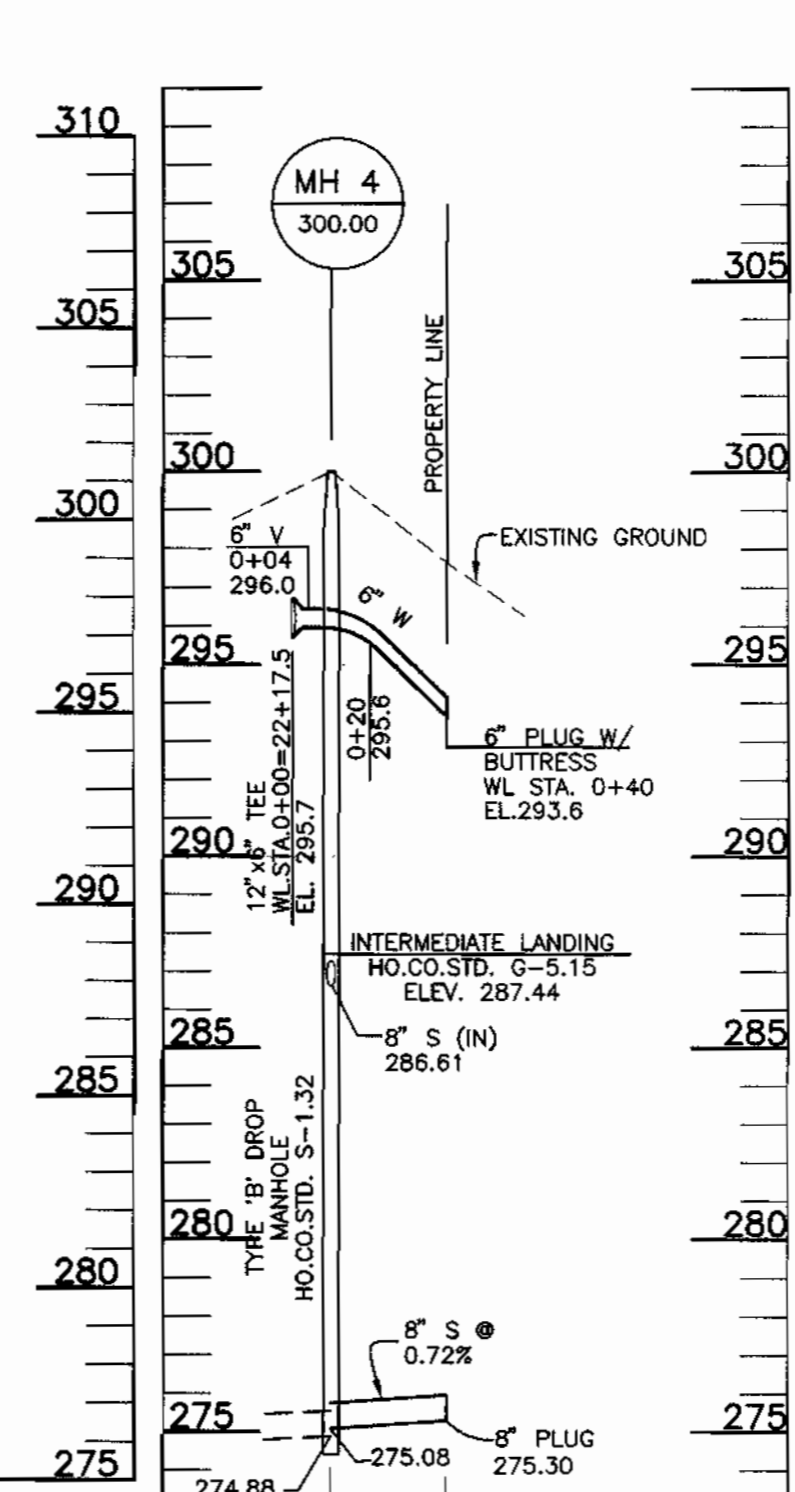
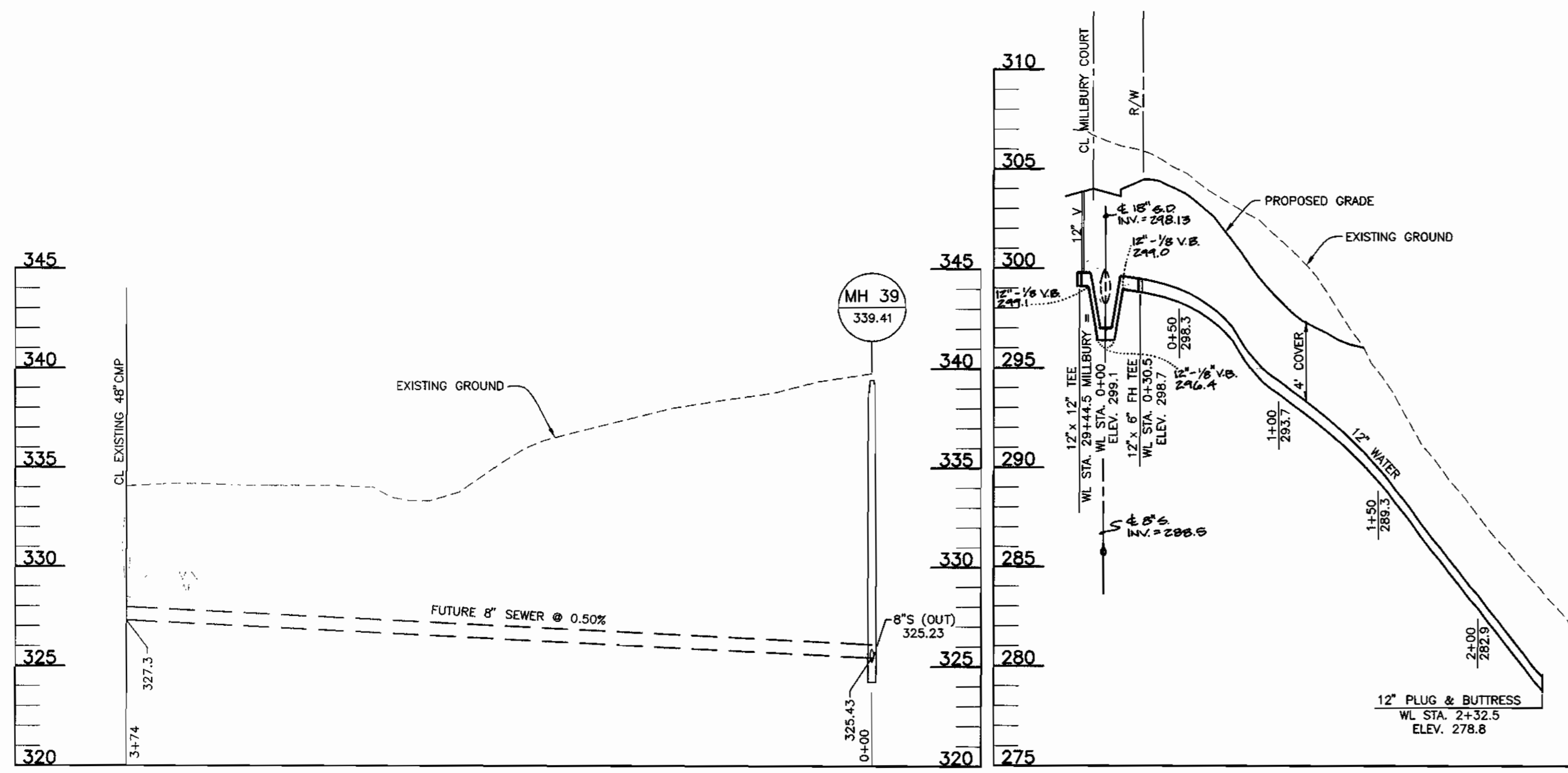
**GROVEMONT**  
PHASE 1  
LOTS 1-10, 58-75, 77-81, 94, AND 96-174  
ELECTION DISTRICT NO. 1

CONTRACT NO. 14-3699-D

SCALE:  
1" = 50' HORIZ.  
1" = 5' VERT.

SHEET NO.  
7 OF 9





DEPARTMENT OF PUBLIC WORKS  
HOWARD COUNTY, MARYLAND

*Robert D. Deinger* 2/24/99  
CHIEF, BUREAU OF UTILITIES

DEPARTMENT OF PLANNING AND ZONING  
HOWARD COUNTY, MARYLAND

*William J. Deinger* 3/15/99  
CHIEF, DEVELOPMENT ENGINEERING DIVISION

**BENCHMARK  
ENGINEERING, INC.**

8480 BALTIMORE NATIONAL PIKE • SUITE 418 • ELIJAH CITY, MARYLAND 21043  
PHONE: 410-465-8105 FAX: 410-465-8644



DES:	GWF/DBT				
DRN:	DBT/YSL				
CHK:	DAM				
DATE:	7/98	MCR:	1	DATE:	3-28-00
	2/99	BY:	NO.	REVISIONS:	
ADD 15" - 1/8" V.B. TO WATER MAIN BETWEEN LOTS 67 & 68					

**PROFILES OF  
WATER AND SEWER MAINS**

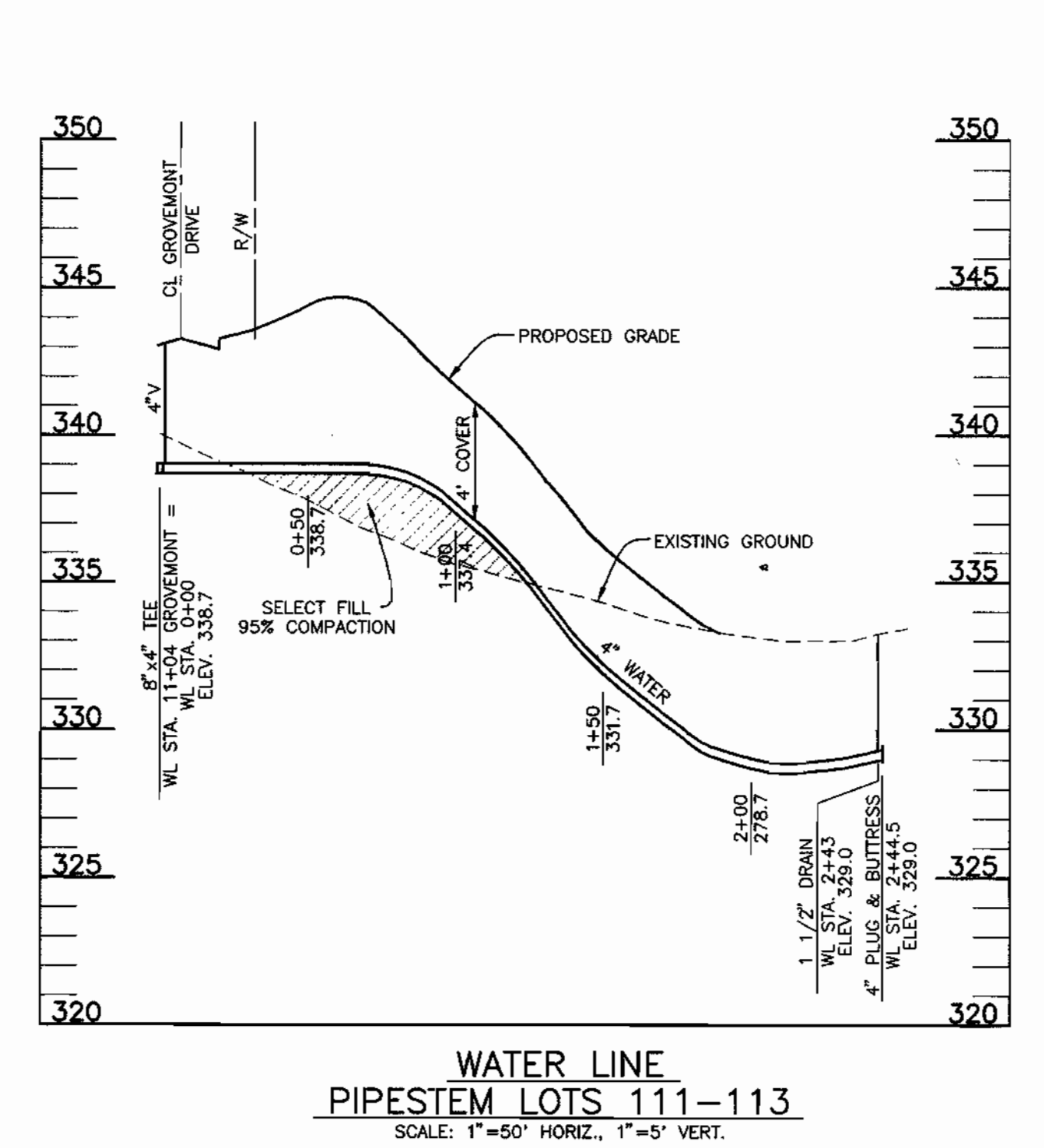
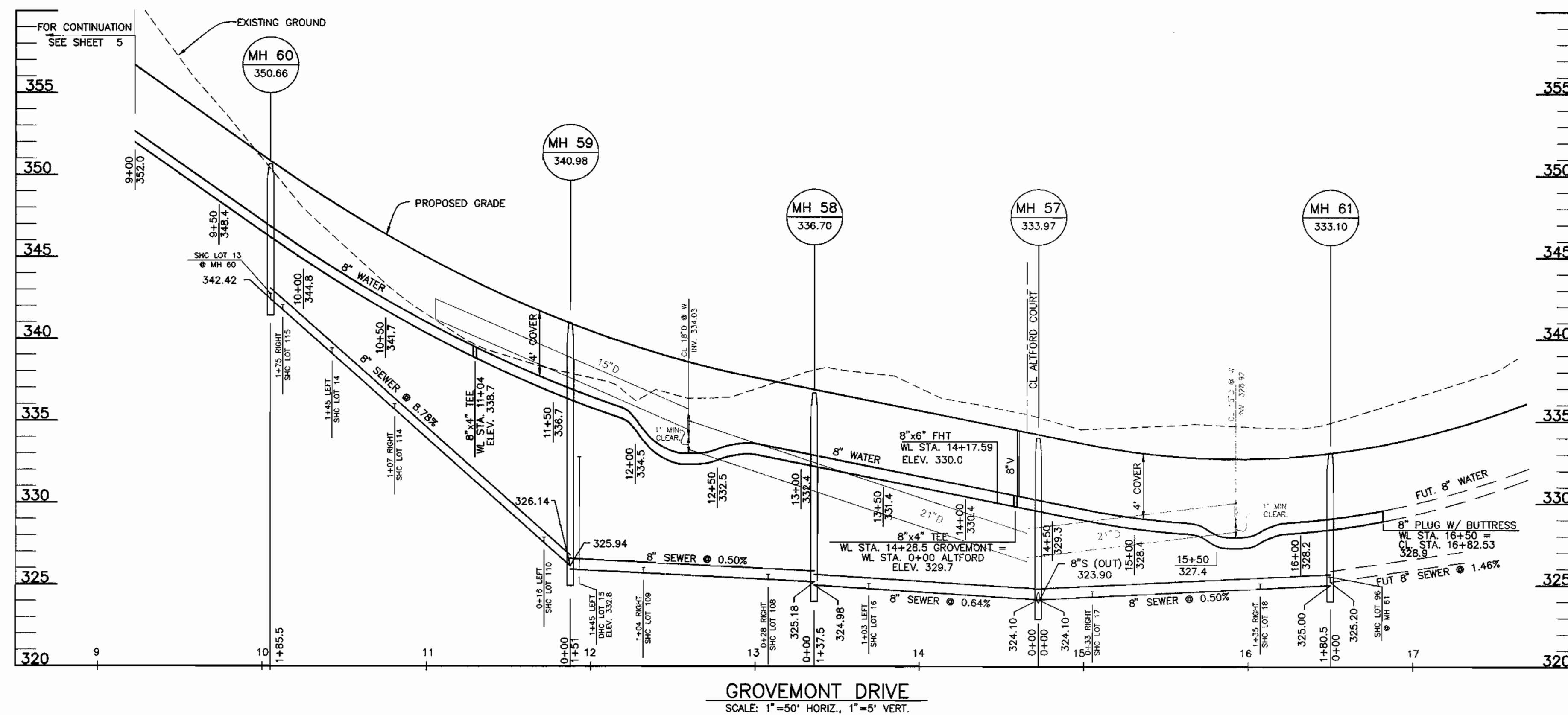
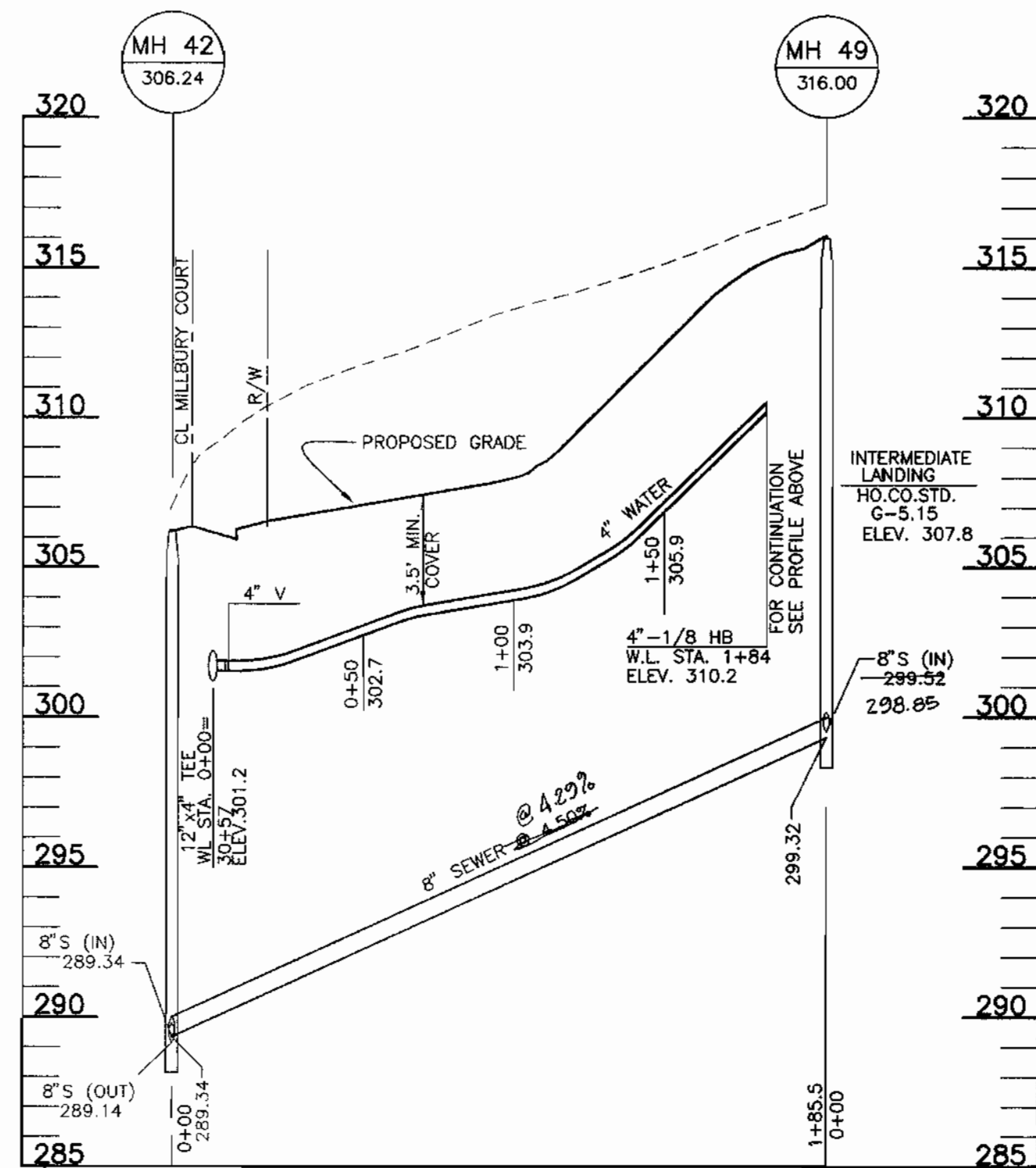
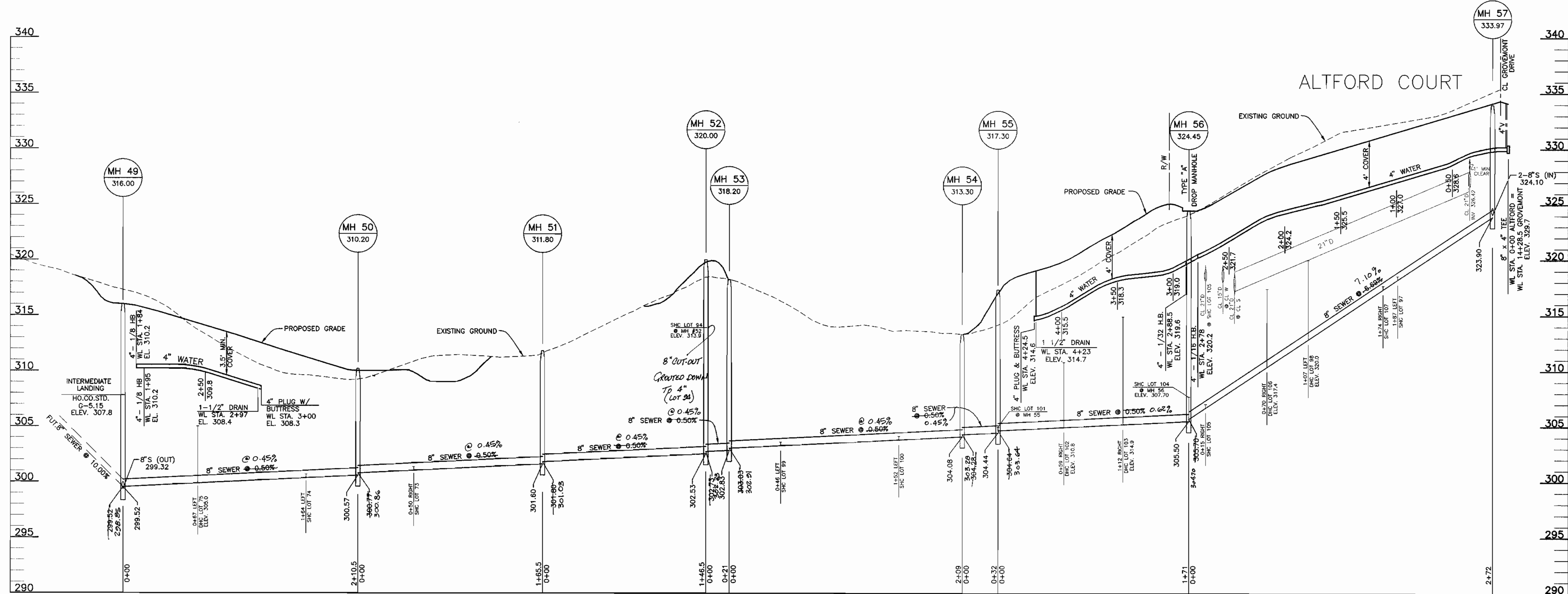
600 SCALE MAP NO. 31 BLOCKS 17 AND 23

**GROVEMONT  
PHASE 1  
LOTS 1-18, 58-75, 77-81, 94, AND 96-174**  
ELECTION DISTRICT NO. 1

**CONTRACT NO. 14-3699-D**

SCALE: 1"=50' HORIZ., 1"=5' VERT.  
SHEET NO. 8 OF 9





DEPARTMENT OF PUBLIC WORKS  
HOWARD COUNTY, MARYLAND

*Robert W. Bennett* 2-24-99  
CHIEF, BUREAU OF UTILITIES

DEPARTMENT OF PLANNING AND ZONING  
HOWARD COUNTY, MARYLAND

*John J. ...*  
CHIEF, DEVELOPMENT ENGINEERING DIVISION

**BENCHMARK**  
ENGINEERS • LAND SURVEYORS • PLANNERS  
**ENGINEERING, INC.**

8460 BALTIMORE NATIONAL PIKE • SUITE 418 • ELLICOTT CITY, MARYLAND 21043  
PHONE: 410-465-6105 FAX: 410-465-6844

*Donald M. ...*

DES:	GWF/DBT		
DRN:	DBT/YSL		
CHK:	DAM		
DATE:	7/98	KEI 1	AS-BUILT CONDITIONS ADDED TO PLAN
	2/99	BY NO.	REVISIONS
			DATE

**PROFILES OF  
WATER AND SEWER MAINS**

600 SCALE MAP NO. 31

**GROVEMONT**  
PHASE 1  
LOTS 1-18, 58-75, 77-81, 94, AND 96-174  
ELECTION DISTRICT NO. 1  
**CONTRACT NO. 14-3699-D**

SCALE:  
1" = 50' HORIZ.  
1" = 5' VERT.

SHEET NO.  
9 OF 9