

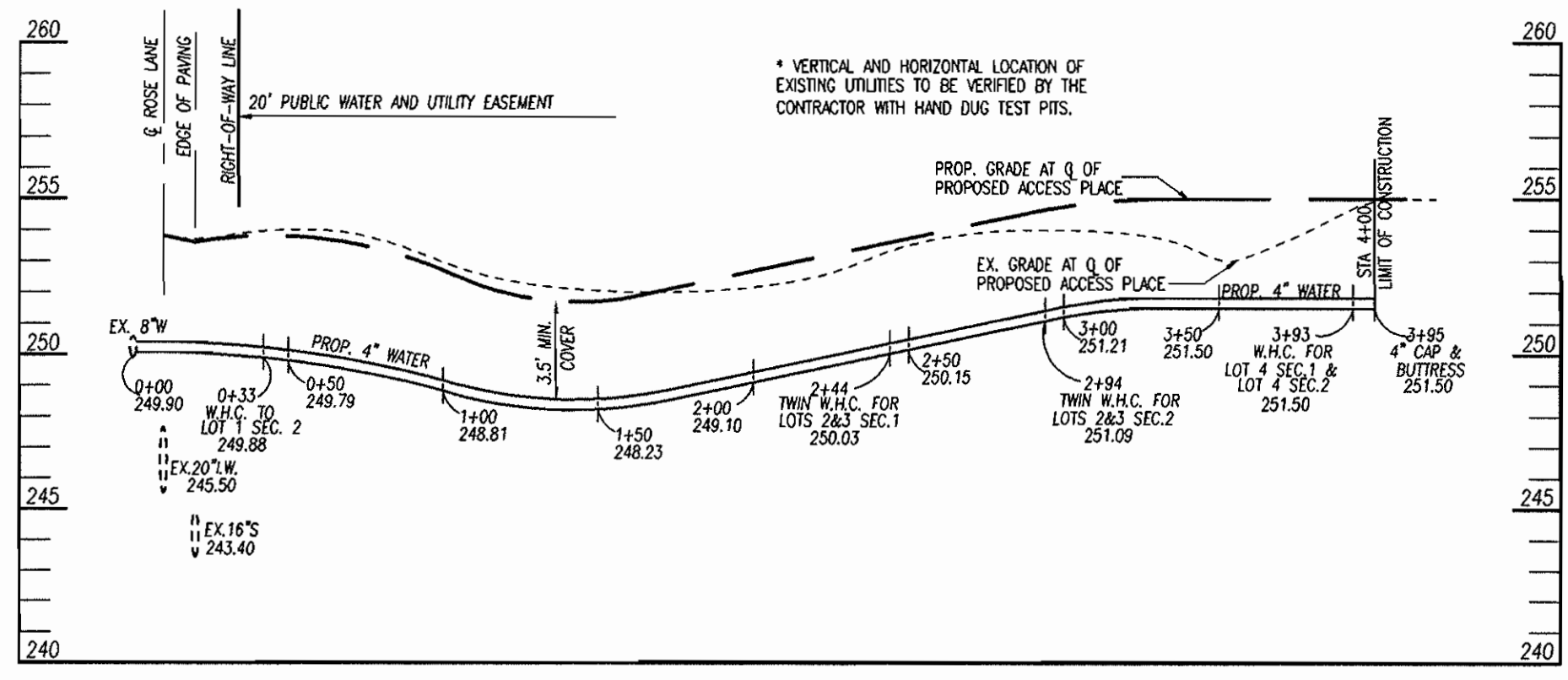
ROSE LANE

PLAN
SCALE: 1" = 50'

LEGEND

- EXISTING WATER _____
- EXISTING SEWER _____
- PROPERTY LINE _____
- PROPOSED WATER _____

SEWER TAPPING TABULATION			
SEC.	LOT NO.	ELEV. @ MAIN	ELEV. @ LOT/R.O.W.
1	1	235.25	235.40
	2	230.74	230.85
	3	232.36	232.48
	4	238.16	238.32
2	1	243.75	243.90
	2	243.61	243.76
	3	243.59	243.74
	4	238.16	238.93



PROPOSED WATER MAIN PROFILE

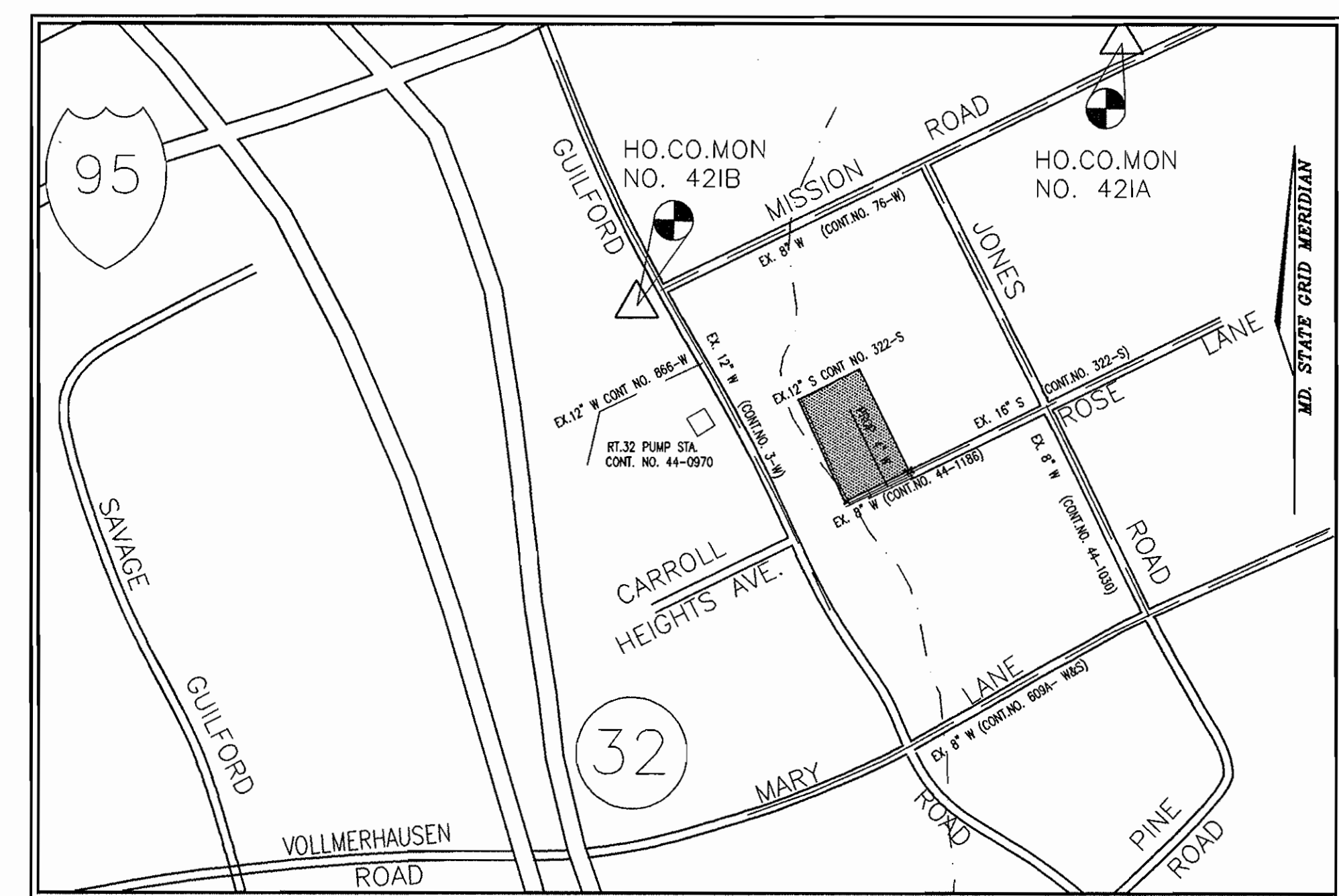
GENERAL NOTES

- PART I**
- APPROXIMATE LOCATION OF EXISTING MAINS ARE SHOWN. THE CONTRACTOR SHALL TAKE ALL NECESSARY PRECAUTIONS TO PROTECT EXISTING MAINS AND SERVICES AND MAINTAIN UNINTERRUPTED SUPPLY. ANY DAMAGE INCURRED SHALL BE REPAIRED IMMEDIATELY TO THE SATISFACTION OF THE ENGINEER AT THE CONTRACTOR'S EXPENSE.
 - ALL HORIZONTAL CONTROLS ARE BASED ON MARYLAND STATE COORDINATES.
 - ALL VERTICAL CONTROLS ARE BASED ON U.S.G.S DATA.
 - ALL PIPE ELEVATIONS SHOWN ARE INVERT ELEVATIONS.
 - CLEAR ALL UTILITIES BY A MINIMUM OF 6". CLEAR ALL POLES BY 2'-0" MINIMUM OR TUNNEL AS REQUIRED. THE OWNER HAS CONTRACTED THE UTILITY COMPANIES AND HAS MADE ARRANGEMENTS FOR BRACING OF POLES AS SHOWN ON DRAWINGS. IN THE EVENT THE CONTRACTOR'S WORK REQUIRES THE BRACING OF ADDITIONAL POLES, ANY COST INCURRED BY THE OWNER FOR BRACING OF ADDITIONAL POLES OR DAMAGES SHALL BE DEDUCTED FROM MONEY OWED THE CONTRACTOR. THE CONTRACTOR SHALL COORDINATE WITH THE UTILITY COMPANIES TO SCHEDULE THE BRACING OF THE POLES.
 - FOR DETAILS NOT SHOWN ON THE DRAWINGS, AND FOR MATERIALS AND CONSTRUCTION METHODS USE HOWARD COUNTY DESIGN MANUAL, VOLUME IV, STANDARD SPECIFICATIONS AND DETAILS FOR CONSTRUCTION (LATEST EDITION). THE CONTRACTOR SHALL HAVE A COPY OF VOLUME IV ON THE JOB.
 - THE CONTRACTOR SHALL NOTIFY THE FOLLOWING UTILITY COMPANIES OR AGENCIES AT LEAST FIVE WORKING DAYS BEFORE STARTING WORK SHOWN THESE PLANS:

STATE HIGHWAY ADMINISTRATION	531-5533
B.G.&E. CO. CONTRACTOR SERVICES	850-4620
B.G.&E. CO. UNDER GROUND DAMAGE CONTROL	787-9068
MISS. UTILITY	1-800-257-7777
COLONIAL PIPELINE CO.	795-1390
HOWARD COUNTY DEPARTMENT OF PUBLIC WORKS	313-4900
BUREAU OF UTILITIES	
 - TREES AND SHRUBS ARE TO BE PROTECTED FROM DAMAGE TO THE MAXIMUM EXTENT. TREES AND SHRUBS LOCATED WITHIN THE CONSTRUCTION STRIP ARE NOT TO BE REMOVED OR DAMAGED BY THE CONTRACTOR.
 - THE CONTRACTOR SHALL REMOVE TREES, STUMPS AND ROOTS ALONG LINE OF EXCAVATION. PAYMENT FOR SUCH REMOVAL SHALL BE INCLUDED IN THE UNIT PRICE BID FOR THE CONSTRUCTION OF THE MAIN.
 - THE CONTRACTOR SHALL NOTIFY THE BUREAU OF HIGHWAYS, HOWARD COUNTY, AT (410) 313-2450 AT LEAST FIVE WORKING DAYS BEFORE ANY OPEN CUT OF ANY COUNTY ROAD FOR LAYING SEWER HOUSE CONNECTIONS. THE APPROVAL OF THESE DRAWINGS WILL CONSTITUTE COMPLIANCE WITH DPW REQUIREMENTS PER SECTION 18.114(a) OF THE HOWARD COUNTY CODE.

PART II - WATER

- ALL WATER MAINS TO BE D.I.P. CLASS 52 UNLESS OTHERWISE NOTED.
- TOPS OF ALL WATER MAINS TO HAVE A MINIMUM OF 3'-1/2' COVER UNLESS OTHERWISE NOTED.
- VALVES ADJACENT TO TEES SHALL BE STRAPPED TO TEES.
- ALL FITTINGS SHALL BE BUTTRESSED OR ANCHORED WITH CONCRETE IN ACCORDANCE WITH CONCRETE IN ACCORDANCE WITH THE STANDARD DETAILS UNLESS OTHERWISE PROVIDED FOR ON THE DRAWINGS.
- THE CONTRACTOR SHALL NOT OPERATE ANY WATER MAIN VALVES ON THE EXISTING WATER SYSTEM.
- ALL WATER HOUSE CONNECTIONS SHALL BE FOR INSIDE METER SETTING UNLESS OTHERWISE NOTED ON PLANS OR IN SPECIFICATIONS.



VICINITY MAP
SCALE: 1" = 600'

SEWER CODE: B 03
WATER CODE: 440000
TEST GRADIENT: .550 PSI

BENCHMARKS:

- HOWARD COUNTY CONTROL NO. 421A
N. 543,390.358 E. 1,364,912.687, ELEV. = 312.66
- HOWARD COUNTY CONTROL NO. 421B
N. 542,366.848 E. 1,363,076.011, ELEV. = 283.12

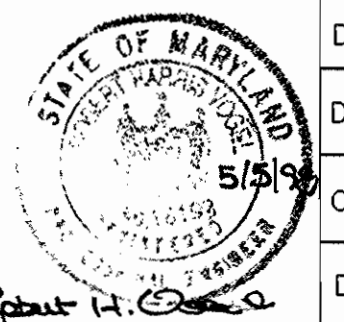
ITEMS	QUANTITIES ESTIMATED	QUANTITIES	TYPE	MANUFACTURER/SUPPLIER
4" S.H.C.	160 LF			
1" W.H.C.	30 LF.			
3/4" W.H.C.	80 LF.			
4" CAP & BUTTRESS	1 EA.			
8"x4" T.S. & V.	1 EA.			
4" DIP WATER MAIN	400 LF			
AS-BUILT				
QUANTITIES				
NAME OF UTILITY CONTRACTOR				
SURVEY AND DRAFTING DIVISION AS-BUILT DATE				

TYPE OF BUILDING:	SINGLE FAMILY DETACHED
NO. OF LOTS/PARCELS:	8
NO. OF WATER HOUSE CONNECTIONS:	7
NO. OF SEWER HOUSE CONNECTIONS:	8
DRAINAGE AREA:	LITTLE PATUXENT
TREATMENT PLANT:	LITTLE PATUXENT

SEDIMENT CONTROL MEASURES WILL BE IMPLEMENTED IN ACCORDANCE WITH SECTION 219 OF THE HOWARD COUNTY DESIGN MANUAL STANDARD AND SPECIFICATIONS AND WITH THE ROAD CONSTRUCTION PLAN F-98-71 & F-98-72.

THIS DEVELOPMENT IS APPROVED FOR SOIL EROSION AND SEDIMENT CONTROL BY THE HOWARD COUNTY SOIL CONSERVATION DISTRICT. <i>John R. Robertson</i> 5/28/98 SOIL CONSERVATION DISTRICT DATE	REVIEWED FOR HOWARD COUNTY SOIL CONSERVATION DISTRICT AND MEETS TECHNICAL REQUIREMENTS. <i>Cheryl Simmons</i> 5/28/98 U.S. SOIL CONSERVATION DISTRICT DATE
--	--

DEPARTMENT OF PUBLIC WORKS HOWARD COUNTY, MARYLAND <i>Robert W. Bennis</i> 5-20-98 CHIEF, BUREAU OF UTILITIES DATE	DEPARTMENT OF PLANING & ZONING HOWARD COUNTY, MARYLAND <i>Michael W. ...</i> 6/1/98 CHIEF, DEVELOPMENT ENGINEERING DIVISION DATE	VOGEL & ASSOCIATES, INC. ENGINEERS - SURVEYORS - PLANNERS 8691 PARK AVENUE, SUITE 101 KILGORE CITY, MARYLAND 21093 TELEPHONE: (410) 461-5828 FAX: (410) 465-3998 <i>Robert W. ...</i>
---	---	--



NO.	REVISION	DATE
DES: J.E.R.		
DRN: J.E.R.		
CHK: R.H.V.		
DATE: MAR, 1998	BY NO.	REVISION

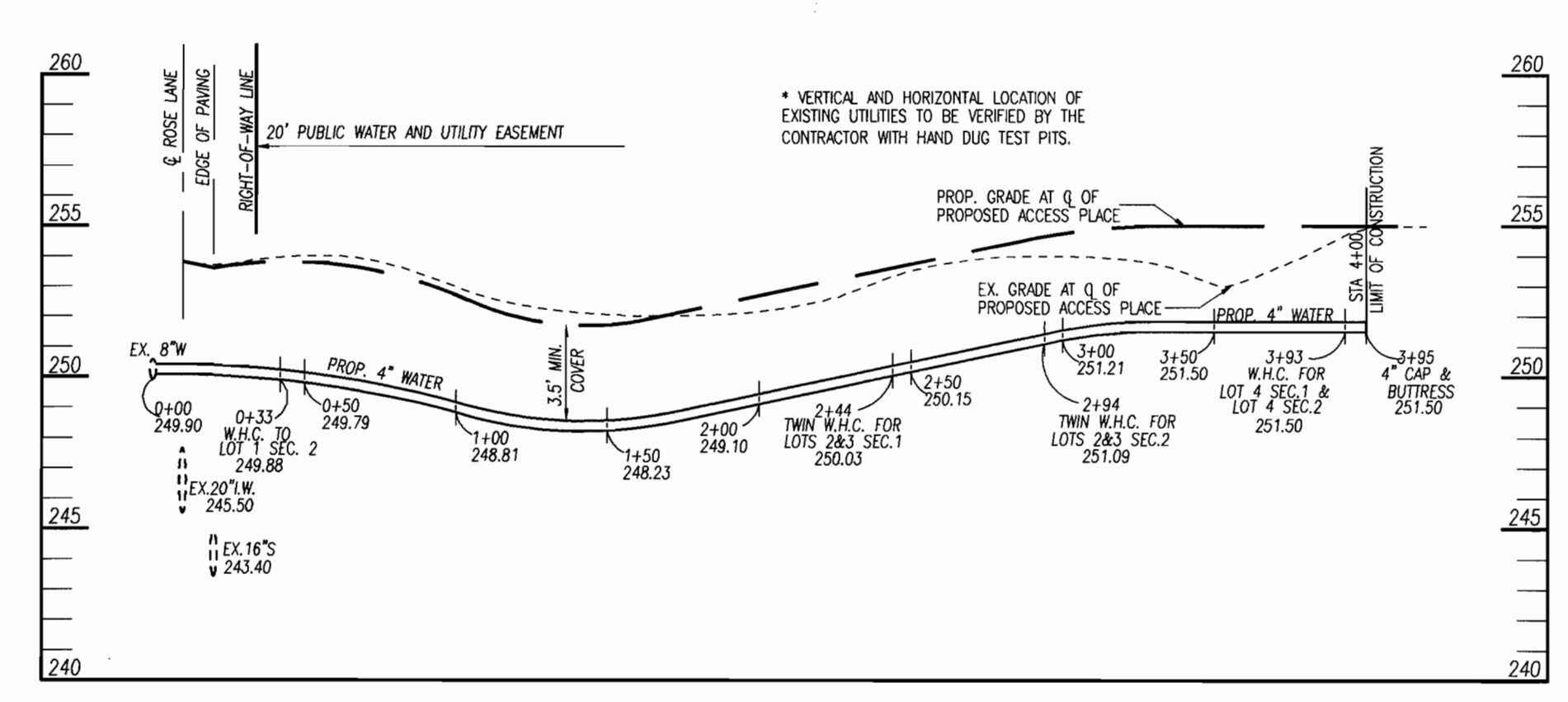
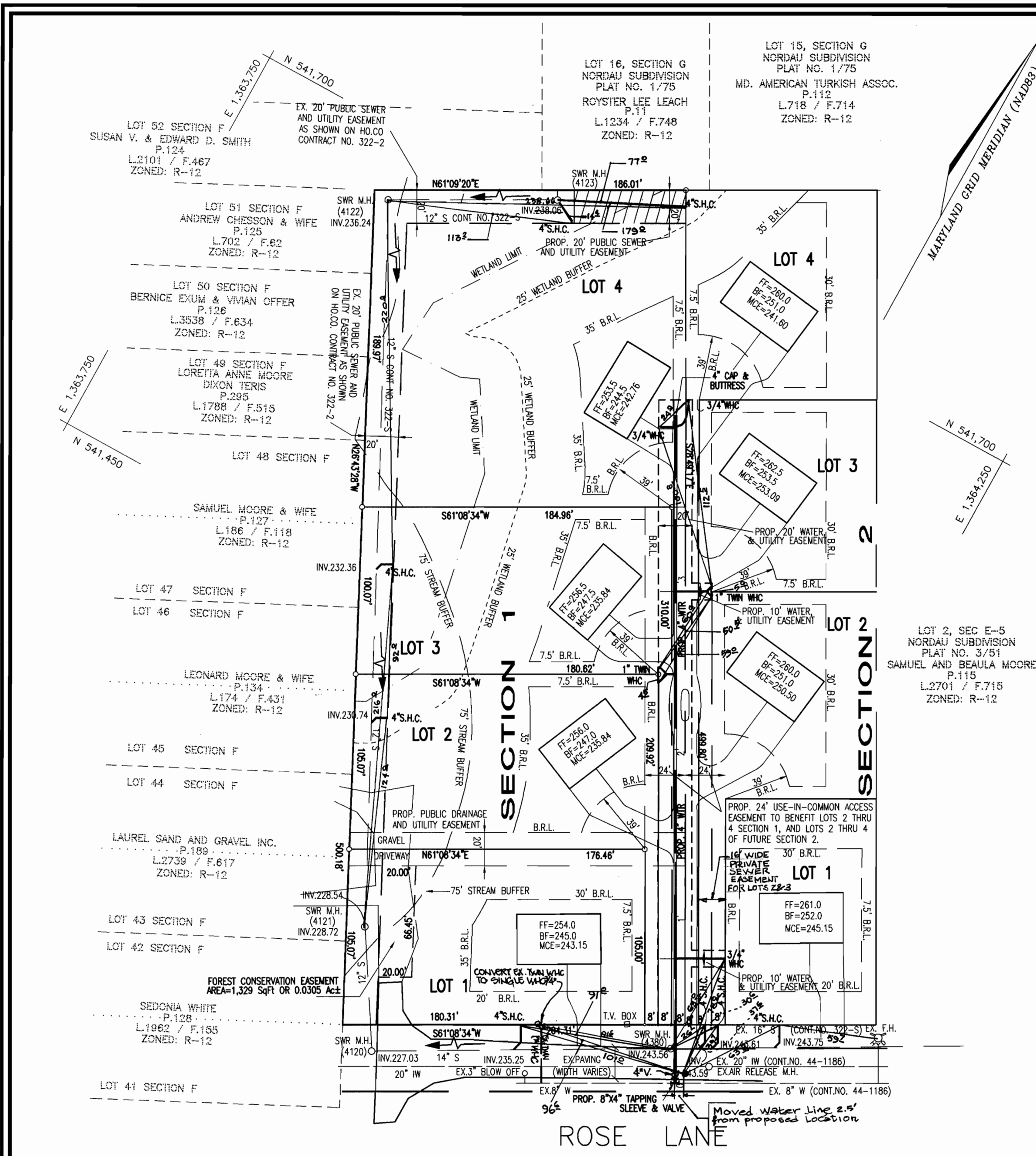
**PLAN AND PROFILE
WATER MAINS**

600' SCALE MAP NO. 42 BLOCK NO. 24

ROSE LANE
SECTION 1 : LOTS 1 - 4
SECTION 2 : LOTS 1 - 4
CONTRACT NO. 24-3677-D

TAX MAP NO. 42 PARCELS 115 & 116 REF. PLAT BK. 3/51
6TH ELECTION DISTRICT HOWARD COUNTY, MARYLAND

CONTRACT PURCHASER
ROBERT McLEWEE
2519 LONDONDERRY ROAD
TIMONIUM, MD 21093

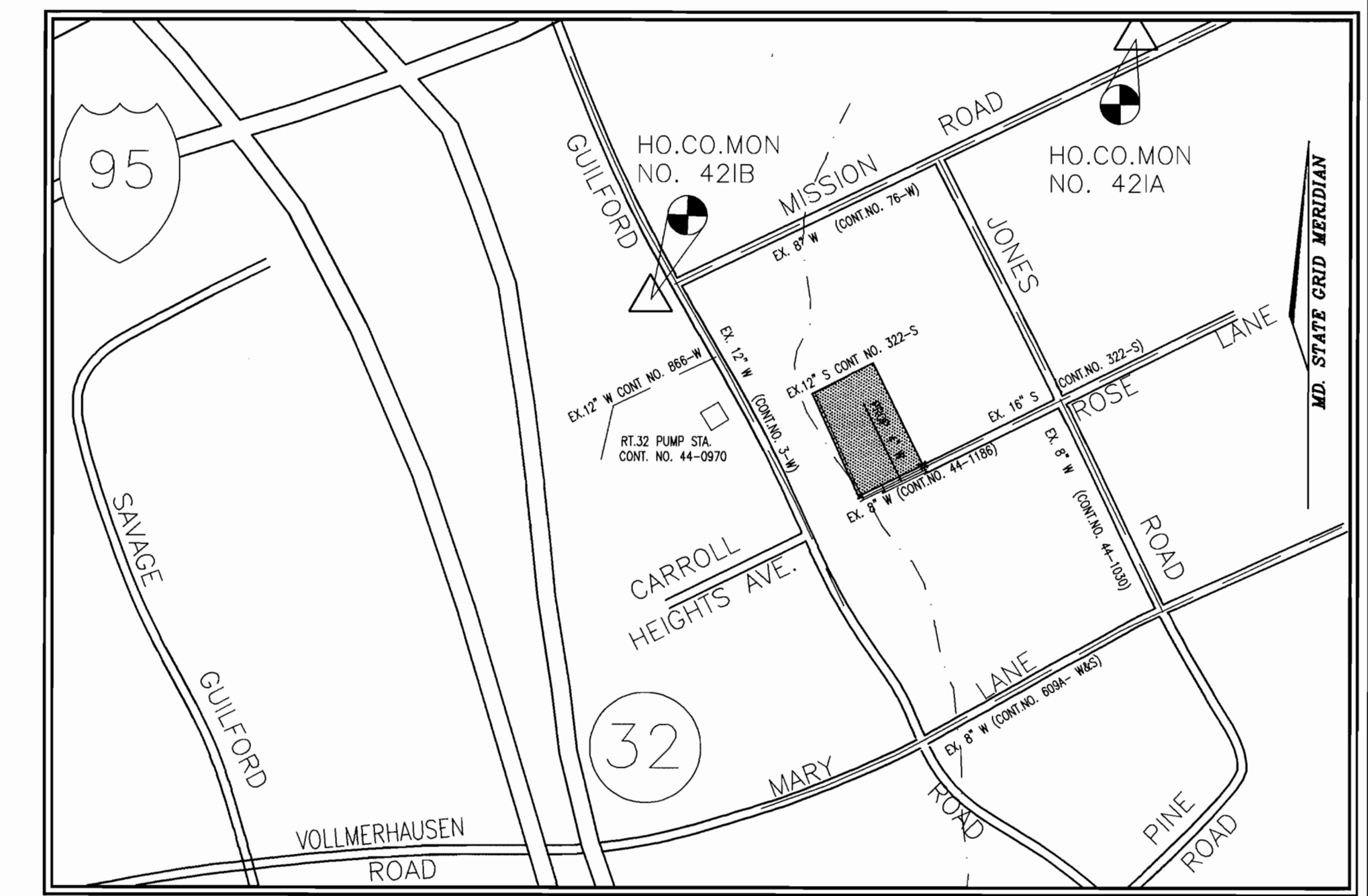


PROPOSED WATER MAIN PROFILE
SCALE: HOR 1" = 50' VERT 1" = 5'

GENERAL NOTES

- PART I**
- APPROXIMATE LOCATION OF EXISTING MAINS ARE SHOWN. THE CONTRACTOR SHALL TAKE ALL NECESSARY PRECAUTIONS TO PROTECT EXISTING MAINS AND SERVICES AND MAINTAIN UNINTERRUPTED SUPPLY. ANY DAMAGE INCURRED SHALL BE REPAIRED IMMEDIATELY TO THE SATISFACTION OF THE ENGINEER AT THE CONTRACTOR'S EXPENSE.
 - ALL HORIZONTAL CONTROLS ARE BASED ON MARYLAND STATE COORDINATES.
 - ALL VERTICAL CONTROLS ARE BASED ON U.S.G.S DATA.
 - ALL PIPE ELEVATIONS SHOWN ARE INVERT ELEVATIONS.
 - CLEAR ALL UTILITIES BY A MINIMUM OF 6". CLEAR ALL POLES BY 2'-0" MINIMUM OR TUNNEL AS REQUIRED. THE OWNER HAS CONTRACTED THE UTILITY COMPANIES AND HAS MADE ARRANGEMENTS FOR BRACING OF POLES AS SHOWN ON DRAWINGS. IN THE EVENT THE CONTRACTOR'S WORK REQUIRES THE BRACING OF ADDITIONAL POLES, ANY COST INCURRED BY THE OWNER FOR BRACING OF ADDITIONAL POLES OR DAMAGES SHALL BE DEDUCTED FROM MONEY OWED THE CONTRACTOR. THE CONTRACTOR SHALL COORDINATE WITH THE UTILITY COMPANIES TO SCHEDULE THE BRACING OF THE POLES.
 - FOR DETAILS NOT SHOWN ON THE DRAWINGS, AND FOR MATERIALS AND CONSTRUCTION METHODS USE HOWARD COUNTY DESIGN MANUAL, VOLUME IV, STANDARD SPECIFICATIONS AND DETAILS FOR CONSTRUCTION (LATEST EDITION). THE CONTRACTOR SHALL HAVE A COPY OF VOLUME IV ON THE JOB.
 - THE CONTRACTOR SHALL NOTIFY THE FOLLOWING UTILITY COMPANIES OR AGENCIES AT LEAST FIVE WORKING DAYS BEFORE STARTING WORK SHOWN THESE PLANS:

STATE HIGHWAY ADMINISTRATION	531-5533
B.G.&E. CO. CONTRACTOR SERVICES	850-4620
B.G.&E. CO. UNDER GROUND DAMAGE CONTROL	787-9068
MISS UTILITY	1-800-257-7777
COLONIAL PIPELINE CO.	795-1390
HOWARD COUNTY DEPARTMENT OF PUBLIC WORKS BUREAU OF UTILITIES	313-4900
 - TREES AND SHRUBS ARE TO BE PROTECTED FROM DAMAGE TO THE MAXIMUM EXTENT. TREES AND SHRUBS LOCATED WITHIN THE CONSTRUCTION STRIP ARE NOT TO BE REMOVED OR DAMAGED BY THE CONTRACTOR.
 - THE CONTRACTOR SHALL REMOVE TREES, STUMPS AND ROOTS ALONG LINE OF EXCAVATION. PAYMENT FOR SUCH REMOVAL SHALL BE INCLUDED IN THE UNIT PRICE BID FOR THE CONSTRUCTION OF THE MAIN.
 - THE CONTRACTOR SHALL NOTIFY THE BUREAU OF HIGHWAYS, HOWARD COUNTY, AT (410) 313-2450 AT LEAST FIVE WORKING DAYS BEFORE ANY OPEN CUT OF ANY COUNTY ROAD FOR LAYING SEWER HOUSE CONNECTIONS. THE APPROVAL OF THESE DRAWINGS WILL CONSTITUTE COMPLIANCE WITH DPW REQUIREMENTS PER SECTION 18.114(a) OF THE HOWARD COUNTY CODE.



VICINITY MAP
SCALE: 1" = 600'

SEWER CODE: B_03
WATER CODE: 440000
TEST GRADIENT: 550 PSI

BENCHMARKS:

- HOWARD COUNTY CONTROL NO. 421A
N. 543,390.358 E. 1,364,912.687 ELEV. = 312.66
- HOWARD COUNTY CONTROL NO. 421B
N. 542,366.848 E. 1,363,076.011 ELEV. = 283.12

ITEMS	QUANTITIES ESTIMATED	QUANTITIES	TYPE	MANUFACTURER/SUPPLIER
4" S.H.C.	180 LF	181.5 LF	PVC	JM MANUFACTURING / U.S. FILTER
1" W.H.C.	30 LF	26.0 LF	COPPER	READING TUBE / U.S. FILTER
3/4" W.H.C.	80 LF	85.0 LF	COPPER	READING TUBE / U.S. FILTER
4" CAP & BUTTRESS	1 EA.	1.0 EA.	M3 CAP	UNION FOUNDRY / U.S. FILTER
8"x4" T.S. & V.	1 EA.	1.0 EA.	H615	MULLER CO. / U.S. FILTER
4" DIP WATER MAIN	400 LF	399.0 LF	DIP	ATLANTIC STATES / U.S. FILTER

QUANTITIES

NAME OF UTILITY CONTRACTOR **J.F.C. INC.**
SURVEY AND DRAFTING DIVISION AS-BUILT DATE **01-19-99**

TYPE OF BUILDING:	SINGLE FAMILY DETACHED
NO. OF LOTS/PARCELS:	8
NO. OF WATER HOUSE CONNECTIONS:	7
NO. OF SEWER HOUSE CONNECTIONS:	8
DRAINAGE AREA:	LITTLE PATUXENT
TREATMENT PLANT:	LITTLE PATUXENT

WATER & SEWER AS-BUILT

LEGEND

EXISTING WATER ————
EXISTING SEWER ————
PROPERTY LINE ————
PROPOSED WATER ————

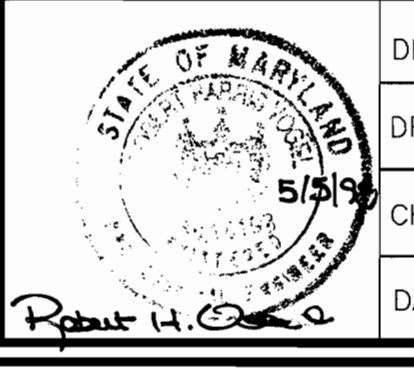
SEWER CONNECTION TABULATION

SEC.	LOT NO.	ELEV. @ MAIN	ELEV. @ LOT/R.O.W.
1	1	235.25	235.40
	2	230.74	230.85
	3	232.36	232.48
	4	238.16	238.32
2	1	243.75	243.90
	2	243.61	243.76
	3	243.59	243.74
	4	238.16	238.93

SEDIMENT CONTROL MEASURES WILL BE IMPLEMENTED IN ACCORDANCE WITH SECTION 219 OF THE HOWARD COUNTY DESIGN MANUAL STANDARD AND SPECIFICATIONS AND WITH THE ROAD CONSTRUCTION PLAN F-98-71 & F-98-72.

THIS DEVELOPMENT IS APPROVED FOR SOIL EROSION AND SEDIMENT CONTROL BY THE HOWARD COUNTY SOIL CONSERVATION DISTRICT. <i>John R. Robertson</i> 5/28/98 SOIL CONSERVATION DISTRICT DATE	REVIEWED FOR HOWARD COUNTY SOIL CONSERVATION DISTRICT AND MEETS TECHNICAL REQUIREMENTS. <i>Cheryl Simmons</i> 5/28/98 U.S. SOIL CONSERVATION DISTRICT DATE
--	--

DEPARTMENT OF PUBLIC WORKS HOWARD COUNTY, MARYLAND <i>Robert W. ...</i> 5-20-98 CHIEF, BUREAU OF UTILITIES DATE	DEPARTMENT OF PLANING & ZONING HOWARD COUNTY, MARYLAND <i>...</i> 6/1/99 CHIEF, DEVELOPMENT ENGINEERING DIVISION DATE	VOGEL & ASSOCIATES, INC. ENGINEERS - SURVEYORS - PLANNERS 2801 PARK AVENUE, SUITE 101 ELICOTT CITY, MARYLAND 21043 TELEPHONE: (410) 461-5828 FAX: (410) 465-3988 Robert H. ...
--	--	---



DES: J.E.R.	
DRN: J.E.R.	
CHK: R.H.V.	
DATE: MAR, 1998	
BY NO.	REVISION

**PLAN AND PROFILE
WATER MAINS**

DATE: MAR, 1998 BY NO. REVISION DATE 600' SCALE MAP NO. 42 BLOCK NO. 24

ROSE LANE
SECTION 1 : LOTS 1 - 4
SECTION 2 : LOTS 1 - 4
CONTRACT NO. 24-3677-D

TAX MAP NO. 42 PARCELS 115 & 116 REF. PLAT BK. 3/51
6TH ELECTION DISTRICT HOWARD COUNTY, MARYLAND

CONTRACT PURCHASER
ROBERT McLEWEE
2519 LONDONDERRY ROAD
TIMONIUM, MD 21093

SCALE AS SHOWN
SHEET 1 of 1