

CONTRACT NO. 24-3660-D

GENERAL NOTES

SNOWDEN RIDGE

SECTION 2, AREA 1

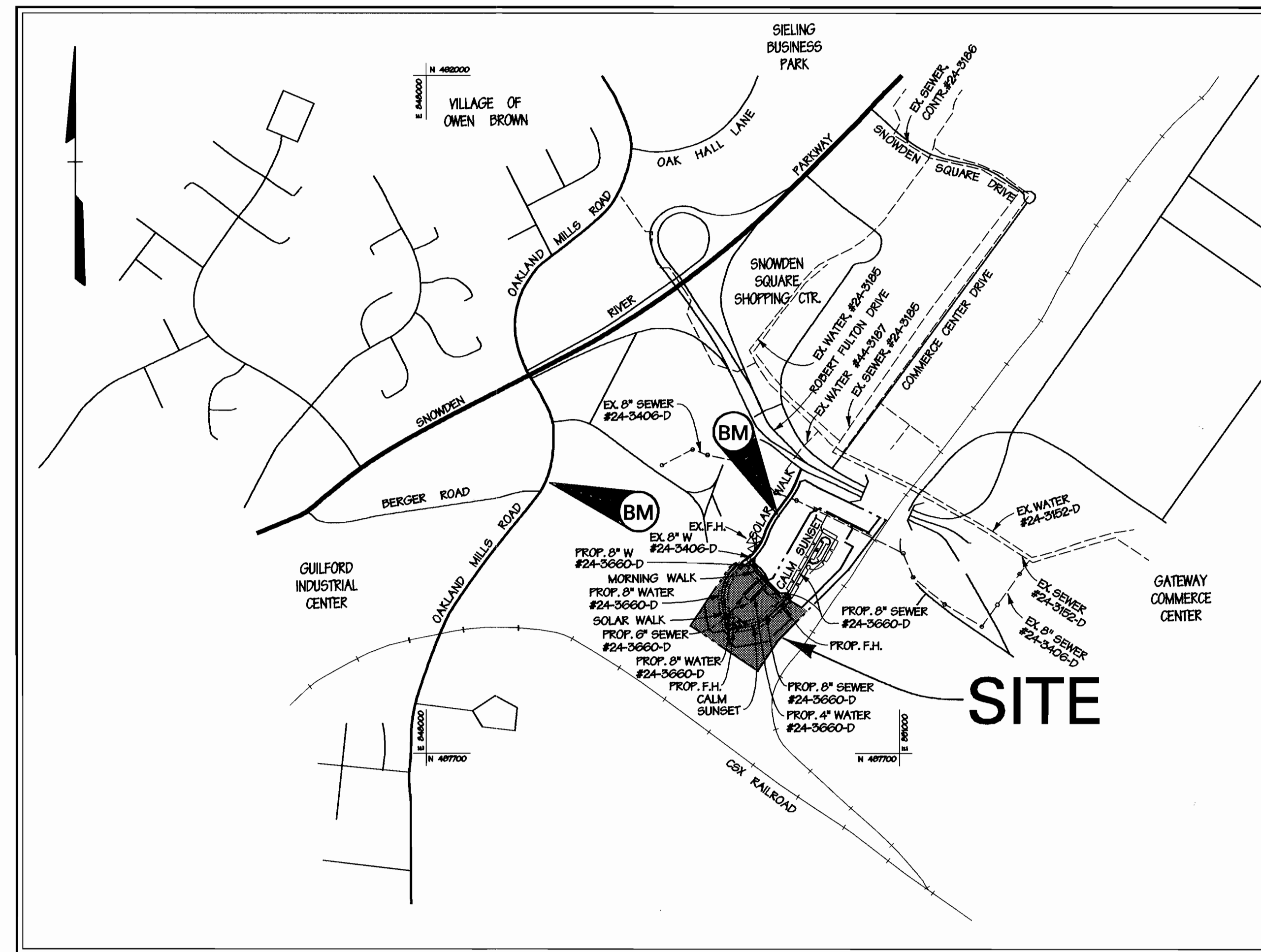
HOWARD COUNTY, MARYLAND

DEPARTMENT OF PUBLIC WORKS

SEWER HOUSE CONNECTION TABLE

LOT	INV. AT E	MIN. C	SLOPE	LOT	INV. AT E	MIN. C	SLOPE
281	350.84	354.46	2%	*198	341.45	344.85	2%
283	351.88	355.42	2%	*199	341.54	344.88	2%
284	352.60	356.10	2%	*200	341.24	344.66	2%
285	352.87	356.55	2%	*201	341.07	344.41	2%
286	353.43	356.89	2%	*202	340.93	344.35	2%
				*203	340.84	344.18	2%
274	346.26	348.82	2%	*204	340.59	344.01	2%
275	346.96	350.54	2%	*205	340.58	343.89	2%
276	347.08	350.80	2%	*206	340.39	343.81	2%
277	347.76	351.54	2%	*207	340.29	343.63	2%
278	347.97	351.75	2%	*208	340.17	343.59	2%
280	347.35	350.91	2%	*209	340.07	343.41	2%
				*210	339.97	343.39	2%
268	343.05	346.57	2%	*211	339.88	343.22	2%
269	343.63	347.09	2%	*212	339.62	343.04	2%
270	344.01	347.53	2%	*215	338.97	342.31	2%
271	344.21	347.77	2%	*214	338.66	342.00	2%
272	344.90	348.40	2%	*215	338.58	341.80	2%
168	343.19	346.87	2%	*216	338.12	342.72	2%
169	343.63	347.19	2%	*228	340.69	344.96	2%
170	343.94	347.42	2%	*240	341.04	345.16	2%
171	344.35	347.89	2%	*241	341.15	345.35	2%
172	345.08	348.64	2%	*242	341.24	345.36	2%
173	345.22	348.78	2%	*245	341.25	345.55	2%
174	345.42	348.12	2%	*244	341.42	345.54	2%
175	345.77	349.55	2%	*245	341.73	345.88	2%
176	345.83	349.75	2%	279	347.08	350.84	2%
177	346.06	349.42	2%	275	344.93	348.51	2%
178	346.08	349.26	2%	282	351.09	354.59	2%
179	346.09	349.45	2%	282	347.31	350.79	2%
180	346.20	349.58	2%	263	346.83	350.31	2%
181	346.40	349.76	2%	264	346.10	349.58	2%
182	346.46	349.74	2%	265	345.65	349.15	2%
183	346.60	349.96	2%	266	344.91	348.43	2%
184	346.70	349.88	2%	267	344.30	347.78	2%
185	346.88	350.20	2%				
186	347.08	350.38	2%				
187	347.18	350.40	2%				
188	347.24	350.54	2%				
189	347.37	350.59	2%				
190	347.47	350.77	2%				
191	347.57	350.79	2%				
192	347.70	351.00	2%				
195	341.74	345.08	2%				
*196	341.63	345.05	2%				
*197	341.54	344.88	2%				

* FUTURE LOTS, SECTION 2 AREA 2.
ALL WATER AND SEWER HOUSE CONNECTIONS UNDER THIS CONTRACT TO BE EXTENDED FROM THE MAIN TO THE EDGE OF EASEMENT OR RIGHT OF WAY.



LOCATION MAP

SCALE: 1" = 600'

NOTE:

THESE ORIGINAL MYLARS SHEETS 1 THRU 3, OF CONTRACT # 24-3660-D, SNOWDEN RIDGE SECTION 2, AREA 1 PARCEL B-1 SUPERSEDE THE ORIGINAL MYLARS SIGNED AND APPROVED BY CHIEF DEVELOPMENT ENGINEERING DIVISION ON 9/22/98.

SEDIMENT CONTROL MEASURES WILL BE IMPLEMENTED IN ACCORDANCE WITH SECTION 219 OF THE SPECIFICATIONS AND WITH ROAD CONSTRUCTION PLANS F-98-49.

TYPE OF BUILDING: TOWNHOUSE
NO. OF LOTS / PARCELS: 82
NO. OF WATER HOUSE CONNECTIONS: 50
NO. OF SEWER HOUSE CONNECTIONS: 79**
DRAINAGE AREA: LITTLE PATENT
TREATMENT PLANT: LITTLE PATENT WATER QUALITY MANAGEMENT CENTER, SAVAGE, HOWARD COUNTY

WATER CODE: 508
SEWER CODE: 4800000
TEST GRADIENT: 700

BENCHMARK

BM-1 DESCRIPTION
** CUT TOP OF BOLT
WEST SIDE GAE TRANS.
TOWER # 425342
ELEV. = 374.28'

BM-2 DESCRIPTION
CUT NAIL IN GAE POLE
ELEV. = 387.97'

** LOCAL BENCHMARKS ABOVE ESTABLISHED FROM HOWARD COUNTY SURVEY CONTROL POINTS #2243002 AND #2243003.

** 29 SEWER HOUSE CONNECTIONS UNDER THIS CONTRACT FOR FUTURE LOTS IN SECTION 2, AREA 2

PART I

- APPROXIMATE LOCATION OF EXISTING MAINS ARE SHOWN. THE CONTRACTOR SHALL TAKE ALL NECESSARY PRECAUTIONS TO PROTECT EXISTING MAINS AND SERVICES AND MAINTAIN UNINTERRUPTED SUPPLY. ANY DAMAGE INCURRED SHALL BE REPAIRED IMMEDIATELY TO THE SATISFACTION OF THE ENGINEER AT THE CONTRACTOR'S EXPENSE.
- ALL HORIZONTAL CONTROLS ARE BASED ON MARYLAND STATE COORDINATES.
- ALL VERTICAL CONTROLS ARE BASED ON U.S.G.S. DATA.
- ALL PIPE ELEVATIONS SHOWN ARE INVERT ELEVATIONS, UNLESS OTHERWISE NOTED.
- CLEAR ALL UTILITIES BY A MINIMUM OF 12" CLEAR ALL POLES BY 2'-0" MINIMUM OR TUNNEL AS REQUIRED. THE OWNER HAS CONTACTED THE UTILITY COMPANIES AND HAS MADE ARRANGEMENTS FOR BRACING OF POLES AS SHOWN ON THE DRAWINGS. IN THE EVENT THE CONTRACTOR'S WORK REQUIRES THE BRACING OF ADDITIONAL POLES, ANY COST INCURRED BY THE OWNER FOR BRACING OF ADDITIONAL POLES OR DAMAGES SHALL BE DEDUCTED FROM MONEY OWED THE CONTRACTOR. THE CONTRACTOR SHALL COORDINATE WITH THE UTILITY COMPANIES TO SCHEDULE THE BRACING OF THE POLES.
- FOR DETAILS NOT SHOWN ON THE DRAWINGS AND FOR MATERIALS AND CONSTRUCTION METHODS USE HOWARD COUNTY DESIGN MANUAL VOLUME IV, STANDARD SPECIFICATIONS AND DETAIL FOR CONSTRUCTION (LATEST EDITION). THE CONTRACTOR SHALL HAVE A COPY OF VOLUME IV ON THE JOB.
- WHERE TEST PITS HAVE BEEN MADE ON EXISTING UTILITIES, THEY ARE NOTED BY THE SYMBOL AT THE LOCATION OF THE TEST PIT. A NOTE OR NOTES CONTAINING THE RESULTS OF THE TEST PIT OR PITS IS INCLUDED ON THE DRAWINGS. EXISTING UTILITIES IN THE VICINITY OF THE PROPOSED WORK FOR WHICH TEST PITS HAVE NOT BEEN DUG SHALL BE LOCATED BY THE CONTRACTOR TWO WEEKS IN ADVANCE OF CONSTRUCTION OPERATIONS AT HIS OWN EXPENSE.
- CONTRACTOR SHALL NOTIFY THE FOLLOWING UTILITY COMPANIES OR AGENCIES AT LEAST FIVE WORKING DAYS BEFORE STARTING WORK SHOWN ON THESE PLANS:
 - STATE HIGHWAY ADMINISTRATION 410-531-5533
 - BGE CO. CONTRACTOR SERVICES 410-850-4620
 - BGE CO. UNDER GROUND DAMAGE CONTROL 410-787-9068
 - MS&S UTILITY 1-800-257-7777
 - COLONIAL PIPELINE CO. 410-796-1390
 - HOWARD COUNTY DEPARTMENT OF PUBLIC WORKS BUREAU OF UTILITIES 410-313-4900
- TREES AND SHRUBS ARE TO BE PROTECTED FROM DAMAGE TO MAXIMUM EXTENT. TREES AND SHRUBS LOCATED WITHIN THE CONSTRUCTION STRIP ARE NOT TO BE REMOVED OR DAMAGED BY THE CONTRACTOR.
- CONTRACTOR SHALL REMOVE TREES, STUMPS, AND ROOTS ALONG LINE OF EXCAVATION. PAYMENT FOR SUCH REMOVAL SHALL BE INCLUDED IN THE UNIT PRICE BID FOR CONSTRUCTION OF THE MAIN.
- THE CONTRACTOR SHALL NOTIFY THE BUREAU OF HIGHWAYS, HOWARD COUNTY, AT (410) 313-2450 AT LEAST FIVE WORKING DAYS BEFORE ANY OPEN CUT OF ANY COUNTY ROAD OR BORING/JACKING OPERATION IN COUNTY ROADS FOR LAYING WATER/SEWER MAINS OR HOUSE CONNECTIONS. THE APPROVAL OF THESE DRAWINGS WILL CONSTITUTE COMPLIANCE WITH DPW REQUIREMENTS PER SECTION 18.14(A) OF THE HOWARD COUNTY CODE.

PART II - WATER

- ALL WATER MAINS TO BE D.I.P. CLASS 52 UNLESS OTHERWISE NOTED.
- TOPS OF ALL WATER MAINS TO HAVE A MINIMUM OF 3'-1/2" COVER UNLESS OTHERWISE NOTED.
- VALVES ADJACENT TO TEES SHALL BE STRAPPED TO TEES.
- ALL FITTINGS SHALL BE BUTTRESSED OR ANCHORED WITH CONCRETE IN ACCORDANCE WITH THE STANDARD DETAILS UNLESS OTHERWISE PROVIDED FOR ON THE DRAWINGS.
- FIRE HYDRANTS SHALL BE SET TO THE BURY LINE ELEVATIONS SHOWN ON THE DRAWINGS. ALL FIRE HYDRANTS SHALL BE RESTRAINED AND BUTTRESSED WITH CONCRETE IN ACCORDANCE WITH STANDARD DETAILS. SOIL AROUND THE FIRE HYDRANT SHALL BE COMPACTED IN ACCORDANCE WITH SECTION 1000 AND 1005 OF THE STANDARD SPECIFICATIONS.
- THE CONTRACTOR SHALL NOT OPERATE ANY WATER MAIN VALVES ON THE EXISTING WATER SYSTEM.
- ALL WATER HOUSE CONNECTIONS SHALL BE FOR INSIDE METER SETTING UNLESS OTHERWISE NOTED ON PLANS OR IN SPECIFICATIONS.
- ALL SINGLE WATER HOUSE CONNECTIONS SHALL BE 1" ALL DOUBLE WATER HOUSE CONNECTIONS SHALL BE 1/2" WITH 1" BRANCHES.
- ALL WATER METERS SHALL BE 3/4".

PART III - SEWER

- ALL SEWER MAINS SHALL BE D.I.P. OR P.V.C. UNLESS OTHERWISE NOTED.
- THE CONTRACTOR SHALL PROVIDE A JOINT IN ALL SEWER MAINS WITHIN 2'-0" OF EXTERIOR MANHOLE WALL.
- ALL MANHOLES SHALL BE 4'-0" INSIDE DIAMETER UNLESS OTHERWISE NOTED.
- FORCE MAINS SHALL BE D.I.P. ONLY.
- MANHOLES SHOWN WITH 12" AND 18" WALLS ARE FOR BRICK MANHOLES ONLY.
- MANHOLES DESIGNATED W.T. IN PLAN AND PROFILE SHALL HAVE WATERTIGHT FRAME AND COVERS, STANDARD DETAIL 05.52. WHERE WATERTIGHT MANHOLE FRAME AND COVER IS USED, SET TOP OF FRAME 1'-0" ABOVE FINISHED GRADE UNLESS OTHERWISE NOTED ON THE DRAWINGS.
- HOUSE(S) WITH THE SYMBOL "C.N.S." INDICATES THAT CELLAR CANNOT BE SERVED.
- ALL SEWER HOUSE CONNECTIONS SHALL BE 4".

ITEM	QUANTITIES		AS-BUILT	
	ESTIMATED	QUANTITIES	TYPE	MANUFACTURER/SUPPLIER
8" WATER	1,237 L.F.	1,237	D.I.P. CLASS 52	ATLANTIC STATES
8" WATER	341 L.F.	50	D.I.P. CLASS 52	ATLANTIC STATES
8" SEWER	1,935 L.F.	1,881	P.V.C. SDR 35	J.M. MANUFACTURING
4" SEWER	2,062 L.F.	2,651	P.V.C. SDR 35	J.M. MANUFACTURING
1" W.H.C.	750 L.F.	600	TYP. K.O. GA.	CAMBRIDGE - LEE
1 1/2" W.H.C.	750 L.F.	850	TYP. K.O. GA.	CAMBRIDGE - LEE
FIRE HYDRANT	2 EACH	2	MUELLER CO.	MUELLER CO.
4" DIA. H.H.	17 EACH	15	SANT H.H.	ATLANTIC CONCRETE
8" VALVE	4 EACH	4	M.J. GATEV.	MUELLER CO.
8" VALVE	4 EACH	2	M.J. GATEV.	MUELLER CO.
8"x8" TEE	1 EACH	1	D.I. TEE	TJLER PIPE
8"x6" TEE	2 EACH	2	D.I. TEE	TJLER PIPE
8"x4" TEE	2 EACH	2	D.I. TEE	TJLER PIPE

NAME OF UTILITY CONTRACTOR: CARLES AND COMPANY
SURVEY AND DRAFTING DIVISION AS-BUILT DATE:

REVIEWED FOR NATURAL RESOURCES CONSERVATION SERVICE AND MEETS TECHNICAL REQUIREMENT

Signature: J. G. Warfield
DATE: 11/16/01

THIS DEVELOPMENT PLAN IS APPROVED FOR SOIL EROSION AND SEDIMENT CONTROL BY THE HOWARD COUNTY CONSERVATION DISTRICT.

APPROVED: [Signature]
HOWARD COUNTY DATE: 11/16/01

DEPARTMENT OF PUBLIC WORKS
HOWARD COUNTY, MARYLAND

DEPARTMENT OF PLANNING & ZONING
HOWARD COUNTY, MARYLAND

DMW
Daft - McCune - Walker, Inc.
A Team of Land Planners, 200 East Pennsylvania Avenue
Landscape Architects, Towson, Maryland 21286
Engineers, Surveyors & Environmental Professionals 410 296 3333
Fax 296 4705

DESIGN BY:	JLS
DRAWN BY:	JMH
CHECKED BY:	K.C.I. Z
DATE:	Sept. 3, 1998
BY NO.	NO.

REVISION	05/23/01
REVISION	1-8-01
REVISION	05/23/01
REVISION	05/23/01

TITLE SHEET

SNOWDEN RIDGE

SECTION 2, AREA 1 (LOTS 168-197, 262-286), (FUTURE LOTS 195-216, 239-245)

TAX MAP 42 PARCEL 513

6TH ELECTION DISTRICT OF HOWARD COUNTY, MARYLAND

CONTRACT NO. 24-3660-D

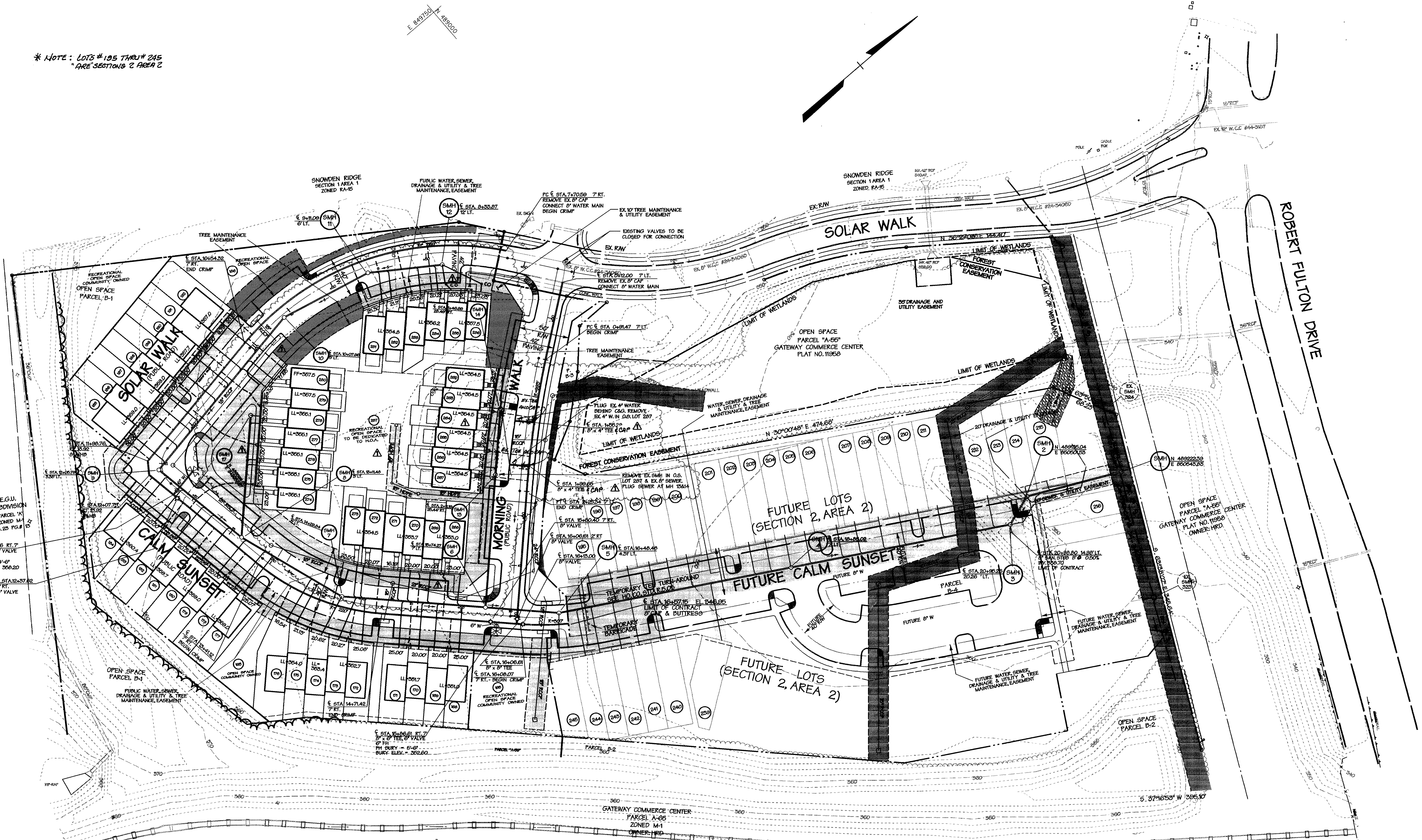
SCALE AS SHOWN

SHEET 1 OF 3

"SEWER" ASBUILT FIELD MEASUREMENTS

LOT#	FROM DIST.	FROM DIST.	REMARK
167	SMH*7 40'	I-12 105'	INLET
168	SMH*6 53'	SDH*14 27'	
169	" " 68'	" " 82'	
170	" " 79'	" " 73'	
171	" " " " SMH*7 70'	" " " " 82'	
172	SMH*7 53'	SDH*14 71'	
173	" " 45'	" " 78'	
174	" " 48'	" " 93'	
175	" " 56'	SDH*16 86'	
176	" " 67'	" " 80'	
177	" " 100'	" " 53'	
178	SDH*16 59'	SMH*8 42'	
179	SDH*16 60'	" " 46'	
180	SMH*8 40'	SMH*9 28'	
181	" " 58'	" " 76'	
182	" " 68'	" " 60'	
183	" " 20'	" " 51'	
184	" " 111'	" " 44'	
185	SMH*9 47'	MH*18 54'	
186	" " 53'	" " 60'	
187	" " 63'	" " 67'	
188	" " 78'	" " 76'	
189	" " 103'	" " 27'	INLET
190	I-20 85'	I-22 71'	
191	" " 70'	" " 52'	
192	" " 60'	" " 37'	
193	SMH*5 47'	I-26 43'	
194	SMH*5 62'	SMH*4 168'	
195	" " 70'	" " 147'	
196	" " 97'	" " 144'	
197	" " 117'	" " 129'	
198	" " 136'	" " 107'	
199	" " 172'	" " 74'	
200	" " 197'	" " 55'	
201	" " 218'	" " 41'	
202	" " 236'	" " 34'	
203	SMH*4 48'	SMH*3 227'	
204	" " 63'	" " 208'	
205	" " 80'	" " 175'	
206	" " 103'	" " 155'	
207	" " 123'	" " 131'	
208	" " 141'	" " 112'	
209	" " 160'	" " 92'	
210	I-26 21'	" " 76'	
211	SMH*3 23'	SMH*2 18'	
212	" " 40'	" " 12'	
213	SMH*2 23'	SMH*1 76'	
214	SMH*4 99'	SMH*5 102'	
215	" " 142'	" " 102'	
216	SMH*5 71'	I-28 95'	INLET
217	" " 70'	" " 78'	
218	" " 58'	" " 50'	
219	" " 50'	" " 44'	
220	SMH*13 27'	SMH*14 30'	
221	" " 82'	" " 10.5'	
222	" " 76.0'	" " 19.5'	
223	" " 62.0'	SMH*14 33'	
224	" " 22.0'	" " 61'	
225	" " 13.0'	" " 80.5'	
226	SMH*6 44.0'	SMH*7 125'	
227	" " 68.0'	" " 23'	
228	" " 86.0'	" " 72'	
229	" " 96.0'	" " 64'	
230	" " 142.0'	" " 38'	
231	" " 148.0'	" " 35'	
232	SMH*17 89'	SMH*8 44.5'	
233	" " 52'	" " 76'	
234	" " 45'	" " 84'	
235	" " 21'	" " 111'	
236	" " 15'	" " 128'	
237	" " 31.5'	" " 153'	
238	" " 46'	" " 167'	
239	SMH*11 33'	SMH*12 75'	
240	" " 37'	" " 63.5'	
241	" " 53'	" " 41'	
242	" " 73'	" " 31'	
243	" " 85.5'	" " 35'	
244	" " 118'	" " 52'	

* NOTE: LOTS #195 THRU #245 ARE SECTIONS 2 AREA 2



"WATER ASBUILT FIELD MEASUREMENTS"

ITEM	FROM (FT)	FROM (FT)	LOT #	FROM (FT)	FROM (FT)	LOT #	FROM	FROM	LOT #	FROM	FROM
8" V @ 12+38	FH @ 12+31 28'	SMH 9 20'	175	SMH 14 85'	SMH 7 47'	191	I-22 62'	I-20 76'	216	SMH 17 33'	SMH 8 25'
6" V @ 12+32	FH @ 12+31 26'	SMH 9 26'	176	SMH 7 66'	SMH 8 83'	192	" " 20'	" " 54'	217	SMH 17 20'	" " 26.5'
8" V @ 15+81	FH @ 15+74 8'	SMH 6 18'	177	" " 83'	" " 65'	262	SMH 13 113'	SMH 14 24'	278	" " 16.5'	" " 137.5'
6" V @ 15+87	FH @ 15+86 7'	SMH 6 19'	178	SMH 8 48'	SMH 18 123'	263	SMH 13 89.5'	SMH 14 10.5'	279	" " 20'	" " 140.5'
8" V @ 16+07	FH @ 15+86 24'	INLET 26 32'	179	" " 42'	" " 121'	264	" " 84.5'	" " 13'	280	" " 50'	" " 178.0'
8" V @ 16+13	FH @ 15+86 24'	INLET 26 34'	180	" " 48'	" " 80'	265	" " 52.5'	" " 41'	281	SMH 11 34'	SMH 12 85'
4" V @ 1+100	SMH 13 30'	SDH 6 36'	181	" " 51'	" " 87'	266	" " 48.5'	" " 45'	282	" " 44'	" " 53'
4" V @ 1+158	SMH 4 33'	SDH 6 21'	182	" " 70'	" " 63'	267	" " 25.0'	" " 68.5'	283	" " 47.5'	" " 47'
			183	" " 81'	" " 61'	268	SMH 6 55'	SMH 7 107'	284	" " 68'	" " 31.5'
LOT 168	SMH 6 56'	SMH 7 118'	184	SDH 18 54'	SMH 9 41'	269	" " 58'	" " 103'	285	" " 100'	" " 37.5'
LOT 169	" " 50'	" " 115'	185	" " 57'	SMH 9 48'	270	" " 78'	" " 81'	286	" " 104'	" " 39.5'
LOT 170	" " 85'	" " 84'	186	SDH 17 103'	SMH 18 63'	271	" " 100'	" " 40'			
LOT 171	" " 80'	" " 81'	187	" " 101'	" " 64'	272	" " 103'	" " 46'			
LOT 172	SDH 14 73'	" " 44'	188	" " 84'	SMH 9 28'	273	" " 160'	" " 36'			
LOT 173	" " 74'	" " 42'	189	" " 88'	" " 25'	274	SMH 17 75.5'	SMH 8 56.5'			
LOT 174	" " 83'	" " 45'	190	I-22 64'	I-20 78'	275	" " 67'	" " 61'			

DEPARTMENT OF PUBLIC WORKS
HOWARD COUNTY, MARYLAND

Robert M. Berman 1-9-01
CHIEF - BUREAU OF UTILITIES - DATE

DEPARTMENT OF PLANNING & ZONING
HOWARD COUNTY, MARYLAND

Alfred Bauman 1/12/01
CHIEF - DEVELOPMENT ENGINEERING DIVISION - DATE

DMW
Daft · McCune · Walker, Inc.

A Team of Land Planners,
Landscape Architects,
Engineers, Surveyors &
Environmental Professionals

200 East Pennsylvania Avenue
Towson, Maryland 21286
410 296 3350
Fax: 296 4705



DESIGN BY: JMH
DRAWN BY: JMH
CHECKED BY: KCI 2
DATE: Sept. 3, 1998

REVISIONS:
1. ASBUILT CONDITIONS ADDED TO PLAN 8/12/01
2. REVERSED LOTS 158-187 TO 288-296, REV. MHC & SHC, REV. W.A. & S.MANN 1-9-01

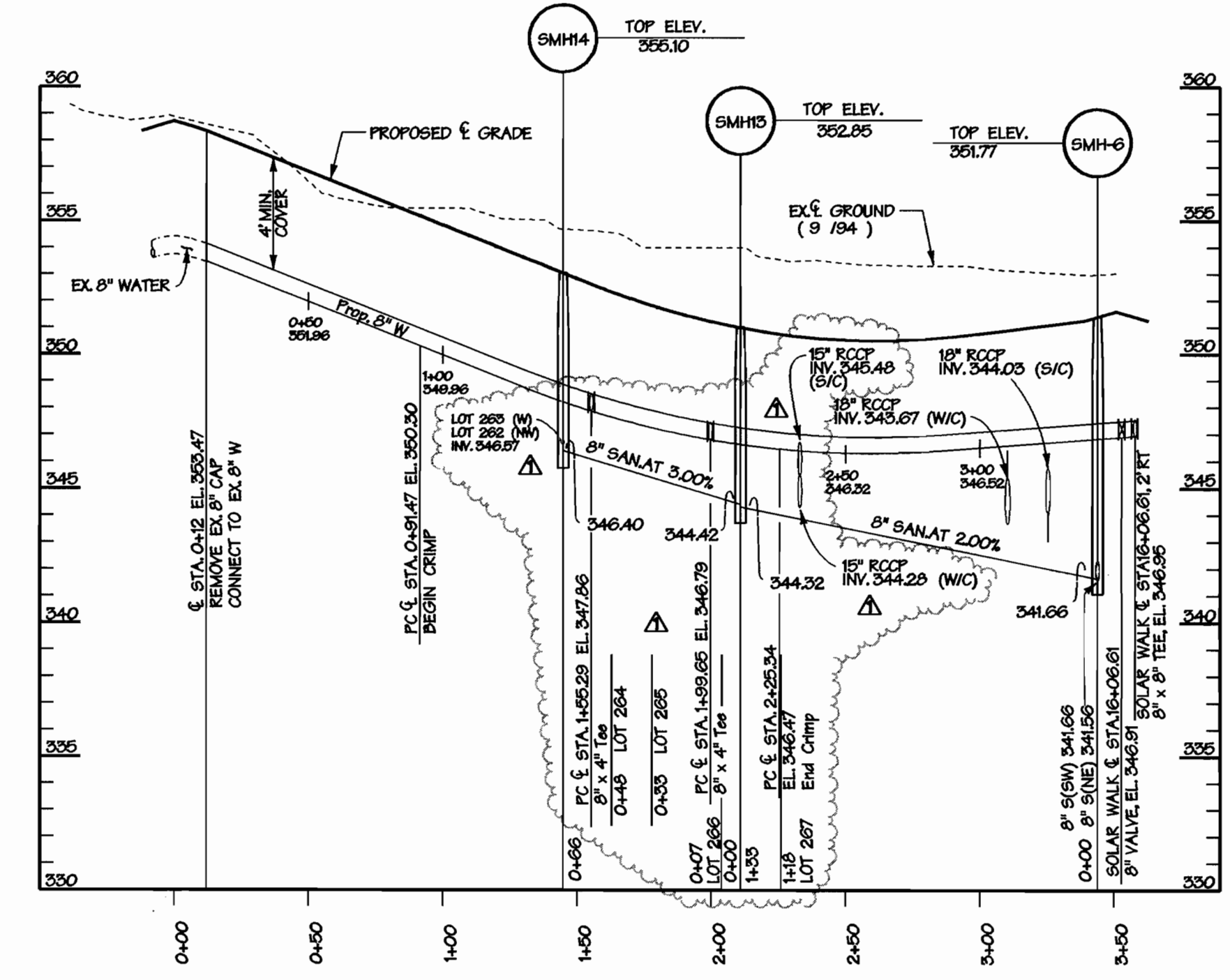
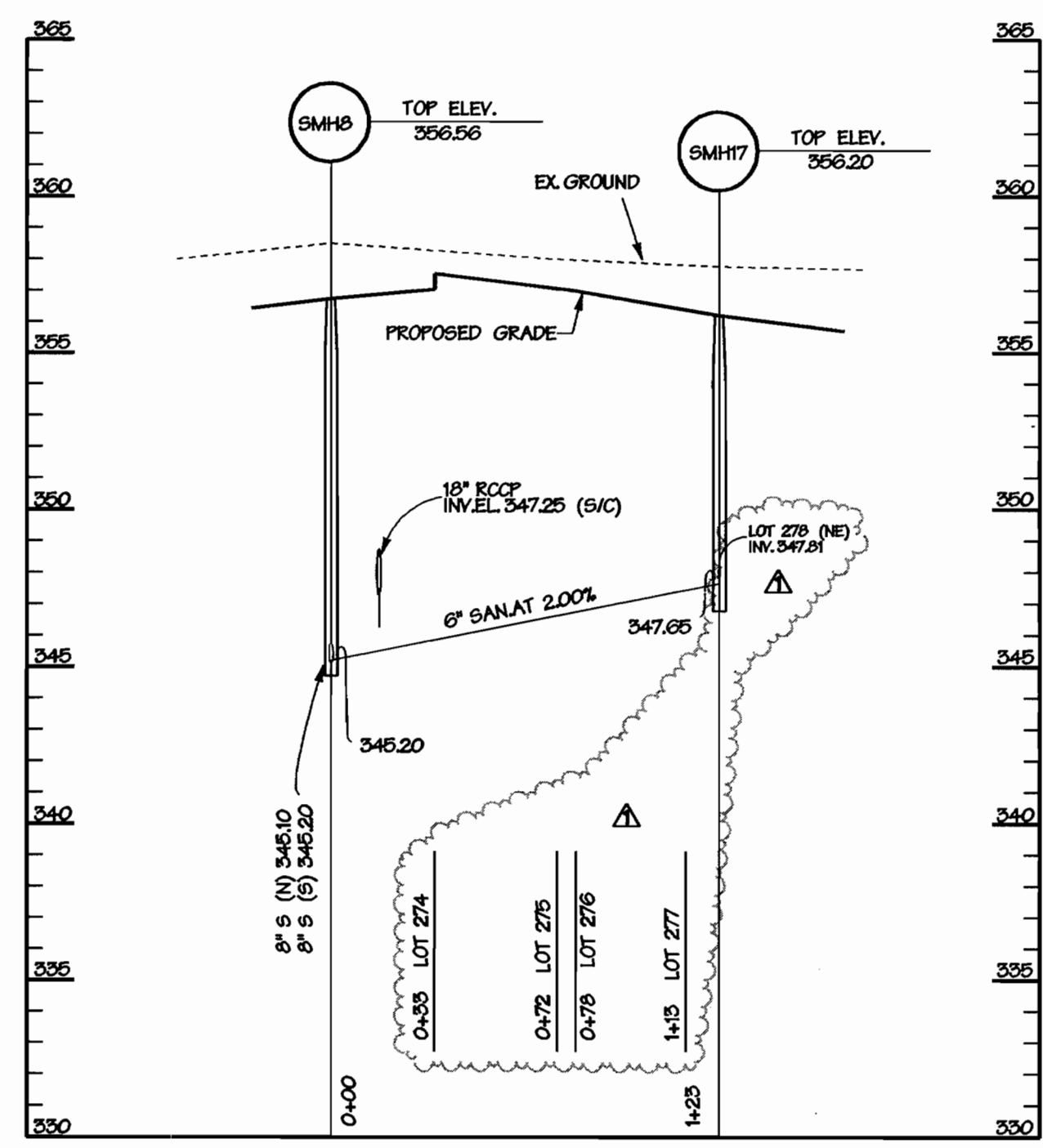
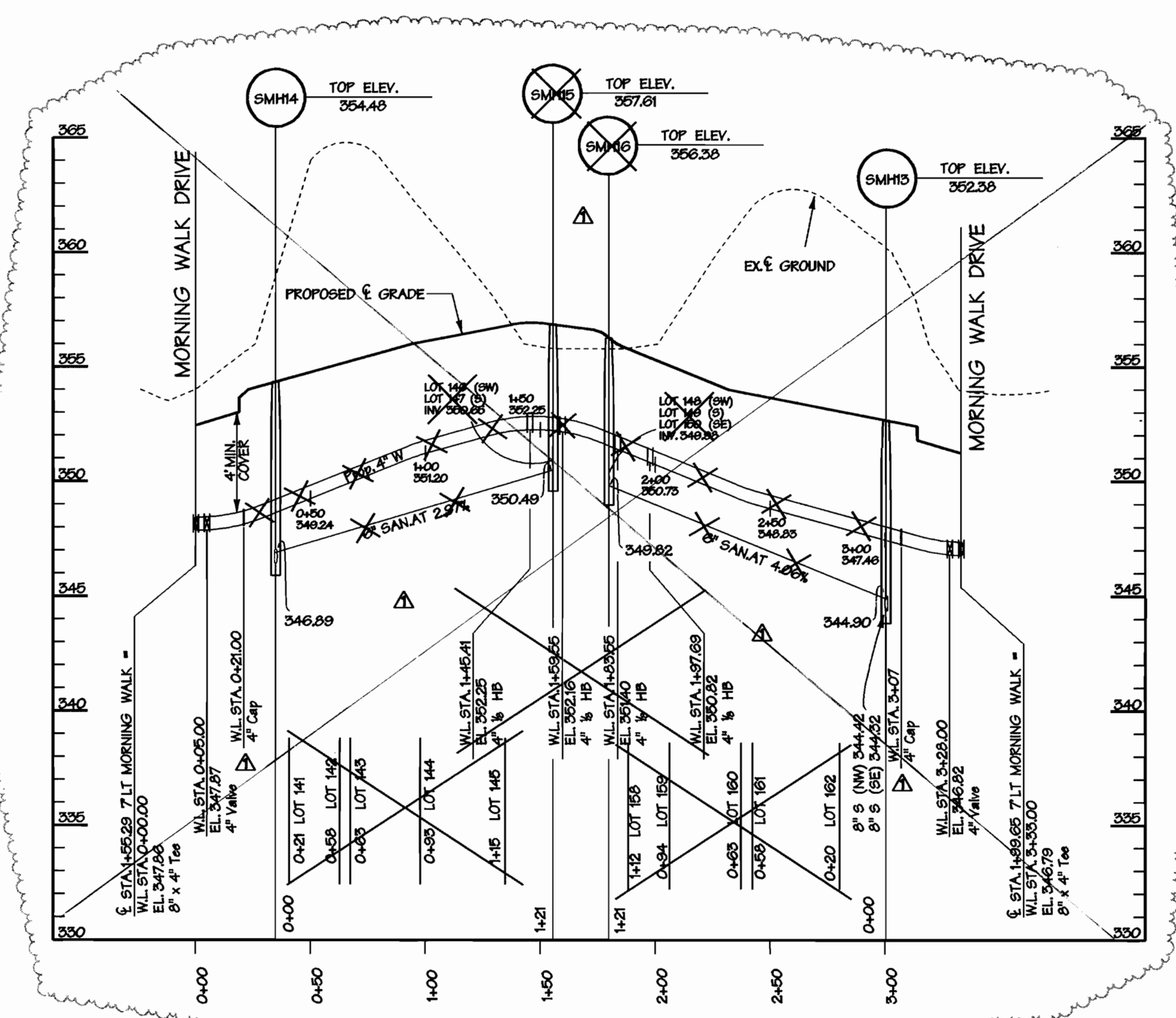
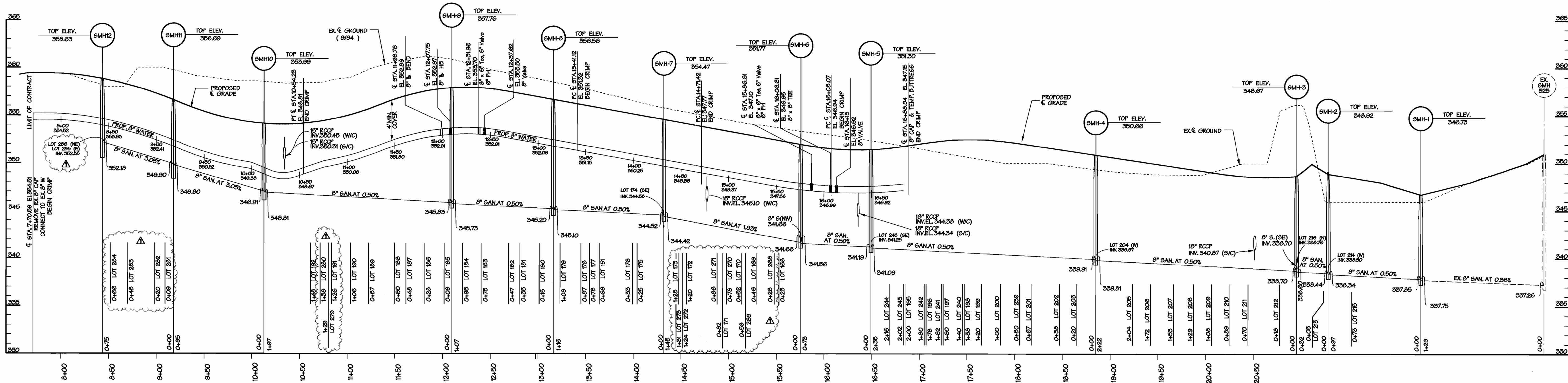
WATER AND SEWER PLAN

SCALE MAP NO. 42 BLOCK NO. 5

SNOWDEN RIDGE
SECTION 2, AREA 1 (LOTS 108-192, 212-246) (FUTURE LOTS 195-216, 239-245)
TAX MAP 42 PARCEL 513
6TH ELECTION DISTRICT OF HOWARD COUNTY, MARYLAND
CONTRACT NO. 24-3660-D

SCALE
1" = 50'

SHEET
2 OF 3



Mon Jan 8 10:57:20 AM 2001 m091104351164.wps

DEPARTMENT OF PUBLIC WORKS
HOWARD COUNTY, MARYLAND

Robert B. ... 1-9-01
CHIEF - BUREAU OF UTILITIES - DATE

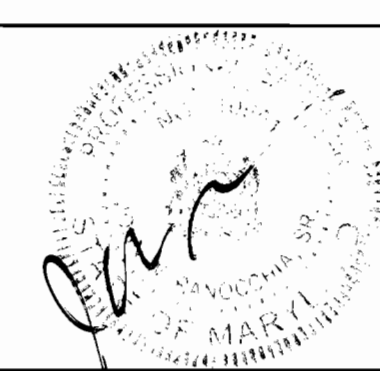
DEPARTMENT OF PLANNING & ZONING
HOWARD COUNTY, MARYLAND

... 1/12/01
CHIEF - DEVELOPMENT ENGINEERING DIVISION - DATE

DMW
Daft · McCune · Walker, Inc.

A Team of Land Planners,
Landscape Architects,
Engineers, Surveyors &
Environmental Professionals

300 East Pennsylvania Avenue,
Towson, Maryland 21286
410 296 3333
Fax: 296 4705



DESIGN BY:	JMH
DRAWN BY:	JMH
CHECKED BY:	K.O.I. 2 ASBUILT CONDITIONS ADDED TO PLAN 05/23/01
DATE:	Sept. 3, 1998
BY:	NO.
REVISION:	
DATE:	1-9-01

WATER AND SEWER PROFILES

600 SCALE MAP NO. 42 BLOCK NO. 5

SNOWDEN RIDGE

SECTION 2, AREA 1 (LOTS 168-172, 212-216) (FUTURE LOTS 195-216, 239-245)
TAX MAP 42 PARCEL 513
6TH ELECTION DISTRICT OF HOWARD COUNTY, MARYLAND
CONTRACT NO. 24-3660-D

SCALE
1" = 50' Hor.
1" = 5' Ver.

SHEET
3 OF 3