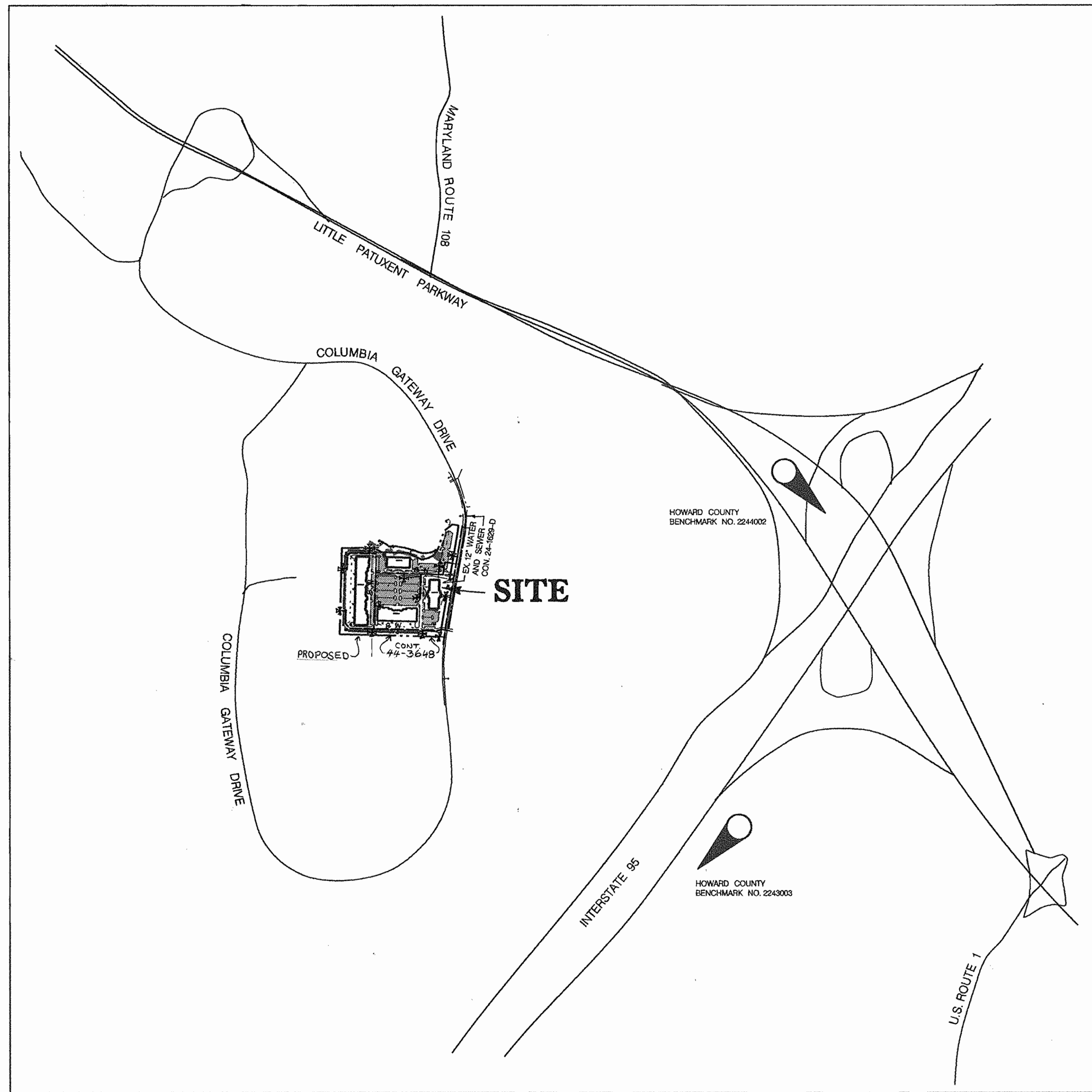


QUANTITIES				
ITEMS	QUANTITIES ESTIMATED	AS-BUILT		
		QUANTITIES	TYPE	MANUFACTURER / SUPPLIER
8" W.	860 LF	861.0 LF	D.I.P. CL-52	GRIFFIN PIPE PRODUCTS CO.
6" W.	30 LF	28.0 LF	D.I.P. CL-52	GRIFFIN PIPE PRODUCTS CO.
8" x 6" TEE	3	3.0 EA.		GRIFFIN PIPE PRODUCTS CO.
6" V.	3	3.0 EA.		U.S. PIPE
FIRE HYDRANT	3	3.0 EA.		KENNEDY VALVE
8" x 6" TEE	2	2.0 EA.		GRIFFIN PIPE PRODUCTS
1/8 BEND	4	4.0 EA.		GRIFFIN PIPE PRODUCTS
8" CAP	4	4.0 EA.		GRIFFIN PIPE PRODUCTS
8" V	1	1.0 EA.		U.S. PIPE
NAME OF UTILITY CONTRACTOR: KINGSLEY CONSTRUCTION CO.				
SURVEY AND DRAFTING DIVISION AS-BUILT DATE: 01-21-99				



VICINITY MAP

SCALE: 1" = 600'

CONTRACT NO. 44-3649-D

Westridge Corporate Center

At Columbia Gateway
Howard County, Maryland
Department of Public Works

GENERAL NOTES

- APPROXIMATE LOCATION OF EXISTING MAINS ARE SHOWN. THE CONTRACTOR SHALL TAKE ALL NECESSARY PRECAUTIONS TO PROTECT EXISTING MAINS AND SERVICES AND MAINTAIN UNINTERRUPTED SUPPLY. ANY DAMAGE INCURRED SHALL BE REPAIRED IMMEDIATELY TO THE SATISFACTION OF THE ENGINEER AT THE CONTRACTOR'S EXPENSE.
- ALL HORIZONTAL CONTROLS ARE BASED ON MARYLAND STATE COORDINATES.
- ALL VERTICAL CONTROLS ARE BASED ON U.S.G.S. DATA.
- ALL PIPE ELEVATIONS SHOWN ARE INVERT ELEVATIONS.
- CLEAR ALL UTILITIES BY A MINIMUM OF 6 INCHES.
- FOR DETAILS NOT SHOWN ON THE DRAWINGS, AND FOR MATERIALS AND CONSTRUCTION METHODS, USE HOWARD COUNTY DESIGN MANUAL, VOLUME IV, STANDARD SPECIFICATIONS AND DETAILS FOR CONSTRUCTION. THE CONTRACTOR SHALL HAVE A COPY OF VOLUME IV ON THE JOB.
- WHERE TEST PITS HAVE BEEN MADE ON EXISTING UTILITIES, THEY ARE NOTED BY THE SYMBOL [] AT THE LOCATION OF THE TEST PIT. A NOTE OR NOTES CONTAINING THE RESULTS OF THE TEST PIT OR PITS IS INCLUDED ON THE DRAWINGS. EXISTING UTILITIES IN THE VICINITY OF THE PROPOSED WORK FOR WHICH TEST PITS HAVE NOT BEEN DUG SHALL BE VERIFIED BY THE CONTRACTOR TO HIS OWN SATISFACTION. ANY DAMAGE TO EXISTING FACILITIES DUE TO THE CONTRACTOR'S NEGLIGENCE SHALL BE REPAIRED AT THE CONTRACTOR'S EXPENSE.
- CONTRACTOR SHALL NOTIFY THE FOLLOWING UTILITIES OR AGENCIES AT LEAST FIVE WORKING DAYS BEFORE STARTING WORK SHOWN ON THESE PLANS:
STATE HIGHWAY ADMINISTRATION - 410-531-5533
BALTIMORE GAS & ELECTRIC CO. - CONTRACTOR SERVICES - 410-561-2585
BALTIMORE GAS & ELECTRIC CO. UNDERGROUND DAMAGE CONTROL - 410-234-5621
BALTIMORE GAS & ELECTRIC CO. TROUBLE SHOOTING - 410-298-9013
MISS UTILITY - 1-800-559-0100
COLONIAL PIPELINE CO. - 410-795-1390
BUREAU OF UTILITIES, HOWARD COUNTY DEPARTMENT OF PUBLIC WORKS - 410-992-2366
- TREES AND SHRUBS ARE TO BE PROTECTED FROM DAMAGE TO MAXIMUM EXTENT. TREES AND SHRUBS LOCATED WITHIN THE CONSTRUCTION STRIP ARE NOT TO BE REMOVED OR DAMAGED BY THE CONTRACTOR.
- CONTRACTOR SHALL REMOVE TREES, STUMPS AND ROOTS ALONG LINE OF EXCAVATION. PAYMENT FOR SUCH REMOVAL SHALL BE INCLUDED IN THE UNIT PRICE BID FOR CONSTRUCTION OF THE MAIN.
- THE CONTRACTOR SHALL NOTIFY THE BUREAU OF HIGHWAYS, HOWARD COUNTY, AT LEAST FIVE (5) WORKING DAYS BEFORE ANY OPEN CUT OF ANY COUNTY ROAD OR BORING/JACKING OPERATION IN COUNTY ROADS FOR LAYING WATER/SEWER MAINS OR HOUSE CONNECTIONS. THE APPROVAL OF THESE DRAWINGS WILL CONSTITUTE COMPLIANCE WITH DPW REQUIREMENTS PER SECTION 18.14(C) OF THE HOWARD COUNTY CODE.

PART II - WATER

- ALL WATER MAINS TO BE D.I.P. CLASS 52 UNLESS OTHERWISE NOTED.
- TOPS OF ALL WATER MAINS TO HAVE A MINIMUM OF 3-1/2' COVER UNLESS OTHERWISE NOTED.
- VALVES ADJACENT TO TEES SHALL BE STRAPPED TO TEES.
- ALL FITTINGS SHALL BE BUTTRESSED OR ANCHORED WITH CONCRETE IN ACCORDANCE WITH THE STANDARD DETAILS UNLESS OTHERWISE PROVIDED FOR ON THE DRAWINGS.
- FIRE HYDRANTS SHALL BE SET TO THE BURY LINE ELEVATIONS SHOWN ON THE DRAWINGS. ALL FIRE HYDRANTS SHALL BE STRAPPED AND BUTTRESSED WITH CONCRETE IN ACCORDANCE WITH STANDARD DETAILS. SOIL AROUND THE FIRE HYDRANT SHALL BE COMPACTED IN ACCORDANCE WITH SECTION 1003 OF THE STANDARD SPECIFICATIONS.
- THE CONTRACTOR SHALL NOT OPERATE ANY WATER MAIN VALVES ON THE EXISTING WATER SYSTEM.
- ALL WATER HOUSE CONNECTIONS SHALL BE FOR INSIDE METER SETTING, UNLESS OTHERWISE NOTED ON THE PLANS OR IN THE SPECIFICATIONS.
- ALL D.I.P. FITTINGS SHALL BE IN ACCORDANCE WITH A.W.W.A. SPECIFICATION C-153 DUCTILE IRON COMPACT FITTINGS, 3 INCH THROUGH 12 INCH FOR WATER AND OTHER LIQUIDS.
- ALL EXISTING VALVES TO BE CLOSED WHEN CONNECTION TO THE SYSTEM IS MADE.

WATER AS-BUILT

TYPE OF BUILDING: OFFICE BUILDING & WAREHOUSE	
NO. OF LOTS / PARCELS	1
NO. OF WATER HOUSE CONNECTIONS:	2
NO. OF SEWER HOUSE CONNECTIONS:	2
DRAINAGE AREA:	DORSEY RUN
TREATMENT PLANT:	LITTLE PATUXENT WATER RECLAMATION PLANT
	SAVAGE, HOWARD COUNTY
WATER CODE:	E06
TEST GRADIENT:	700
SEWER CODE:	3380000

PARCEL S-23, BUILDING D, COLUMBIA GATEWAY DRIVE, SDP98-40

REVIEWED FOR NATURAL RESOURCES CONSERVATION SERVICE AND MEETS TECHNICAL REQUIREMENT

Cheryl Simpson/ias 12/15/97
SIGNATURE DATE

THIS DEVELOPMENT PLAN IS APPROVED FOR SOIL EROSION AND SEDIMENT CONTROL BY THE HOWARD COUNTY CONSERVATION DISTRICT.

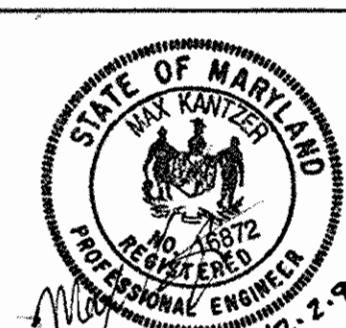
APPROVED *Jeffrey R. Slij* 12/15/97
HOWARD S.C.D. DATE

SEDIMENT CONTROL MEASURES WILL BE IMPLEMENTED IN ACCORDANCE WITH SECTION 219 OF THE SPECIFICATIONS AND WITH ROAD CONSTRUCTION PLANS SDP-98-40.

DEPARTMENT OF PUBLIC WORKS
HOWARD COUNTY, MARYLAND

DEPARTMENT OF PLANNING & ZONING
HOWARD COUNTY, MARYLAND

DMW
Daft · McCune · Walker, Inc.
A Team of Land Planners, Landscape Architects, Engineers, Surveyors & Environmental Professionals
200 East Pennsylvania Avenue
Towson, Maryland 21286
410 296 3333
Fax 296 4705

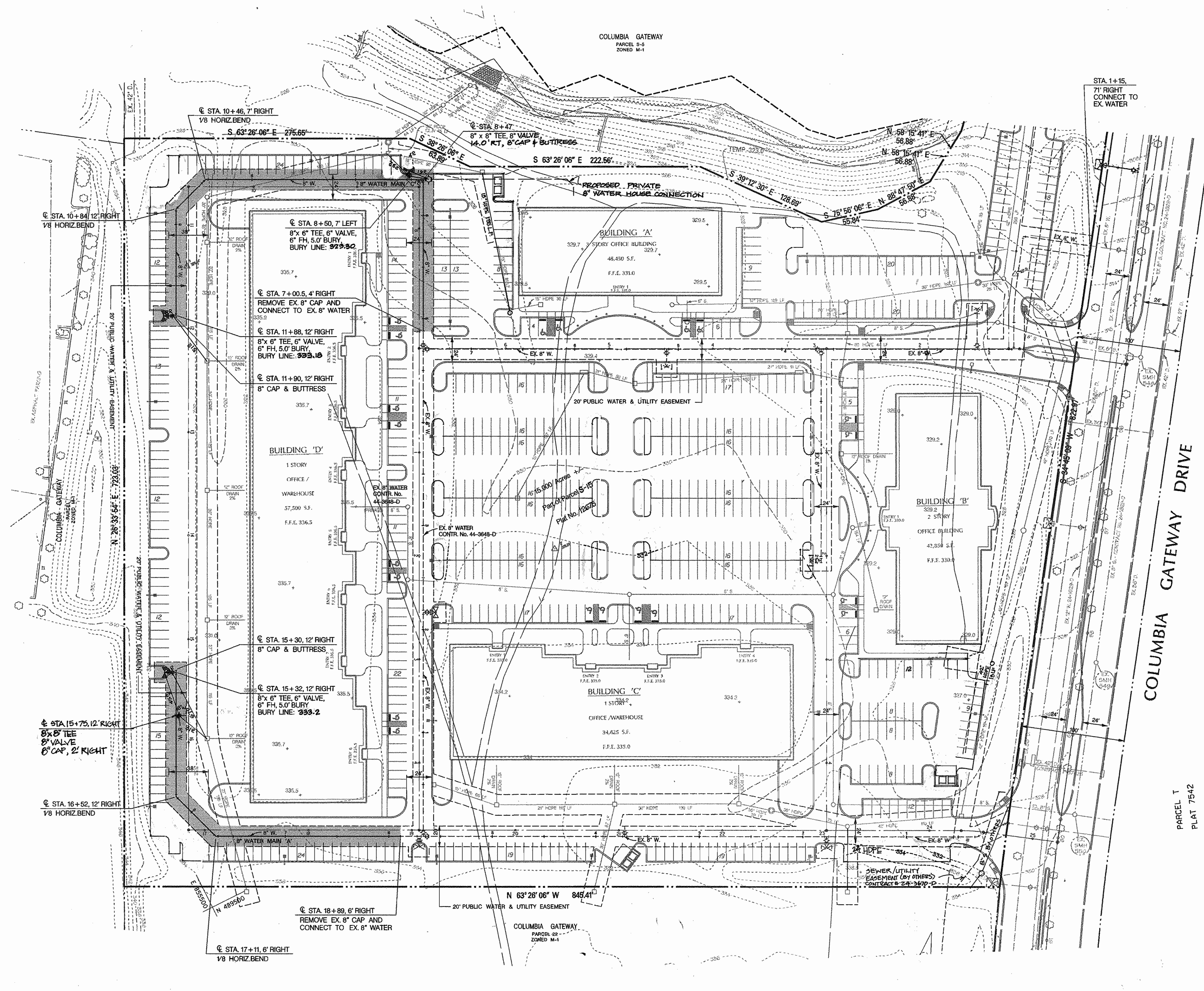


DESIGN BY:	DFM		
DRAWN BY:	MSS		
CHECKED BY:	JLS		
DATE:	Oct. 15, 1997		
BY NO.	DMW 2	REV. QUANTITIES	4-27-96
	DMW 1	REVISE BILL OF MATERIALS	12/28/97
		REVISION	DATE

Phase Two
TITLE SHEET

Westridge Corporate Center
At Columbia Gateway
6th ELECTION DISTRICT - HOWARD COUNTY, MARYLAND
CONTRACT NO. 44-3649-D

SHEET
1 OF 3



STRUCTURE SCHEDULE

STA. 7+00.5, CONNECT TO EX. WATER N 489947.11 E 855931.32
STA. 8+47, 8" x 8" TEE, 8" CAP & BUT. N 490038.29 E 855996.91
STA. 8+50, 8" x 6" TEE N 490044.41 E 855984.67
STA. 10+46, 1/8" HORIZ BEND N 490132.95 E 855908.92
STA. 10+84, 1/8" HORIZ BEND N 490119.56 E 855770.71
STA. 11+88, 8" x 6" TEE N 489926.97 E 855724.40
STA. 11+90, 8" CAP N 489925.18 E 855723.51
STA. 15+30, 8" CAP N 489720.85 E 855571.33
STA. 15+32, 8" x 6" TEE N 489719.56 E 855570.44
STA. 16+52, 1/8" HORIZ BEND N 489611.53 E 855516.72
STA. 17+11, 1/8" HORIZ BEND N 489580.28 E 855533.83
STA. 18+89, CONNECT TO EX. WATER N 489460.58 E 855683.21
STA. 15+75, 8" x 6" TEE N 489680.26 E 855551.00

LEGEND

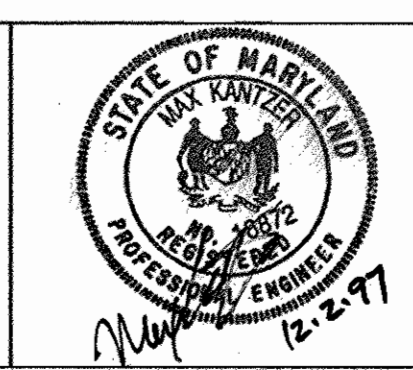
- - - - - EXISTING 10' CONTOUR
- - - - - EXISTING 2' CONTOURS
- TRENCH DRAIN
- MANHOLE, TYP.
- STORM DRAIN INLET
- STORM DRAIN PIPE
- YARD INLET OR COURTYARD DRAIN
- TEE
- 8" W. WATER LINE
- WATER VALVE
- FIRE HYDRANT
- 8" S. SEWER MANHOLE
- SEWER LINE

DWG. NO. 2 13/24/31 1997 d:\88036\dwg\180362.dwg

DEPARTMENT OF PUBLIC WORKS
 HOWARD COUNTY, MARYLAND
 Robert W. Berman 12-9-97
 CHIEF - BUREAU OF UTILITIES - DATE

DEPARTMENT OF PLANNING & ZONING
 HOWARD COUNTY, MARYLAND
 [Signature] 12/16/97
 CHIEF - DEVELOPMENT ENGINEERING DIVISION - DATE

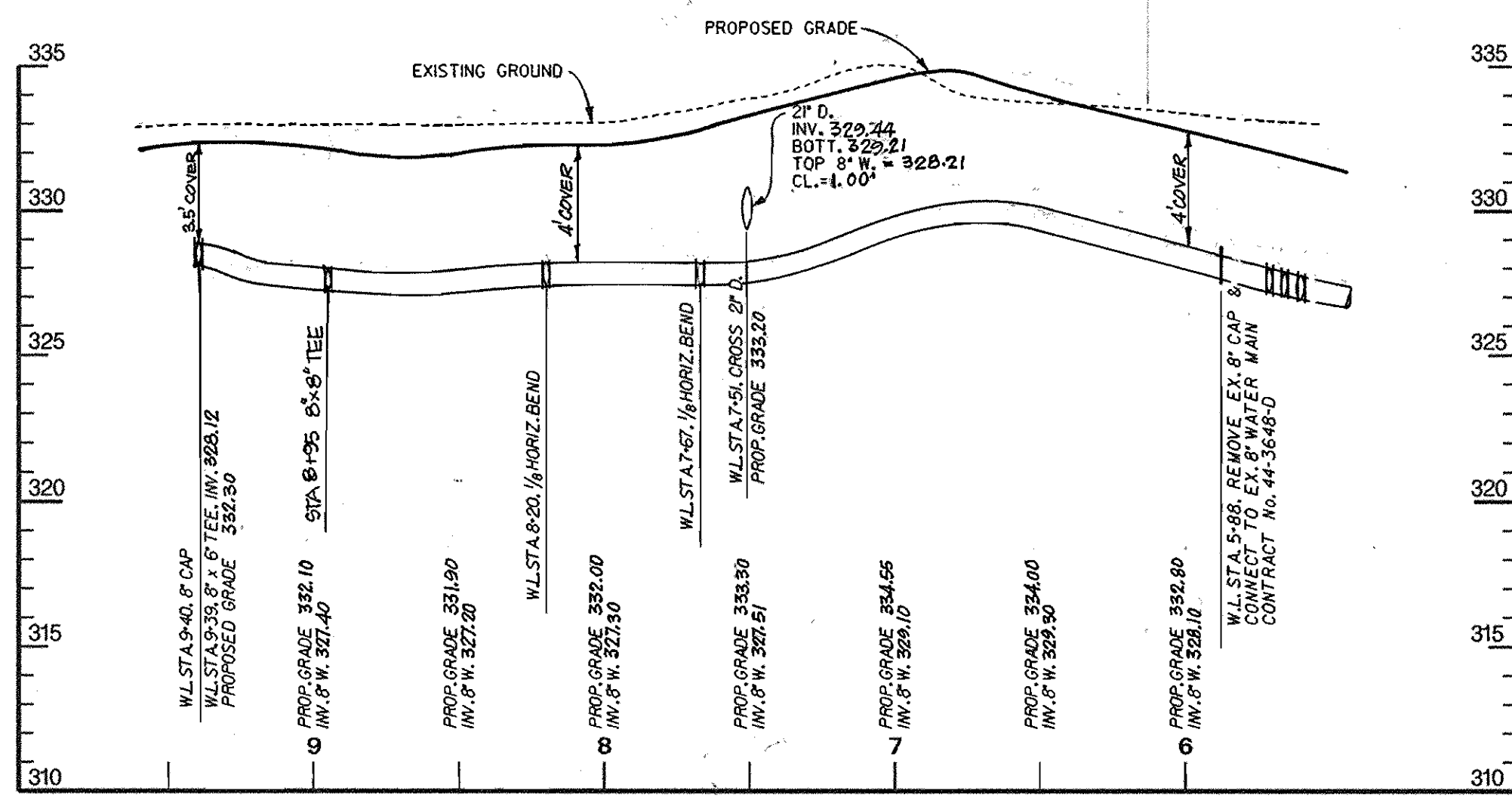
DMW
Daft · McCune · Walker, Inc.
 A Team of Land Planners, 200 East Pennsylvania Avenue, Towson, Maryland 21286
 Landscape Architects, Engineers, Surveyors & Environmental Professionals
 410 296 3333 Fax 296 4705



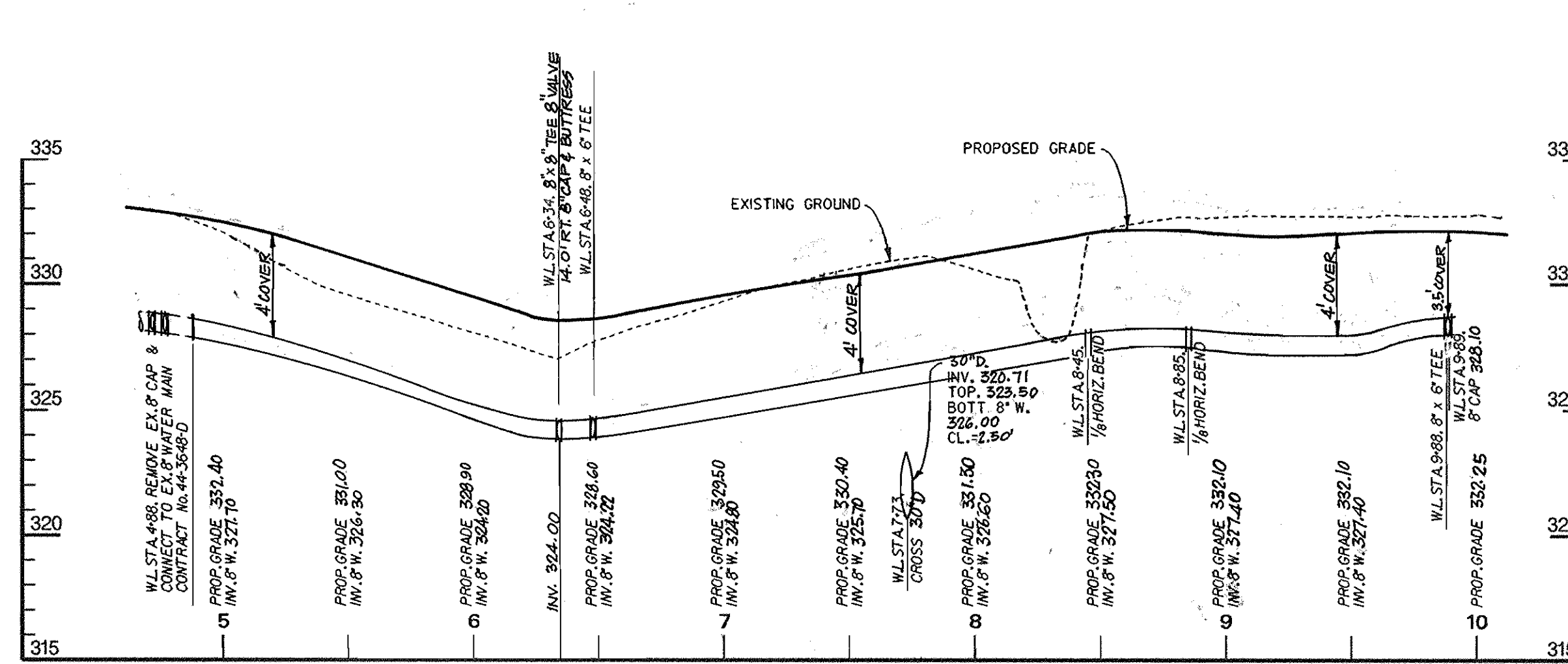
DESIGN BY:	DFM			
DRAWN BY:	MSS	JWM	3	REV. WATER HOUSE CONNECTIONS 7-20-96
CHECKED BY:	JLS	DMW	2	REV. PKG. ADD PROP. SEWER, KEY WATER, 4-27-97
DATE:	Nov. 18, 1997	DMW	1	BURY LINE ELEVATIONS 12/23/97
BY NO.				REVISION

Phase Two
PLAN SHEET
 600 SCALE MAP NO. 43 BLOCK NO.

Westridge Corporate Center
 At Columbia Gateway
 CONTRACT NO. 44-3649-D
 SCALE 1"=50'
 SHEET 2 OF 3



8" WATER MAIN 'A'



8" WATER MAIN 'C'

PROFILE

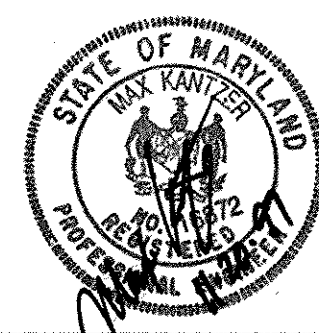
SCALE: HORIZ. 1"=50'
VERT. 1"=5'

DEPARTMENT OF PUBLIC WORKS
HOWARD COUNTY, MARYLAND

DEPARTMENT OF PLANNING & ZONING
HOWARD COUNTY, MARYLAND

DMW
Daft · McCune · Walker, Inc.

A Team of Land Planners, Landscape Architects, Engineers, Surveyors & Environmental Professionals
200 East Pennsylvania Avenue
Towson, Maryland 21286
410 296 3333
Fax 296 4705



DESIGN BY:	DFM		
DRAWN BY:	MSS		
CHECKED BY:	JWM	3	REVISED 8" WATER MAIN 'C' & 'A'
	JLS	2	REVISE 8" WATER MAIN 'A'
DATE:	DMW	1	REVISE PROFILES DUE TO GRADE CHANGES.
Nov. 7, 1997	BY	NO.	REVISION
			DATE

Phase Two
PROFILES SHEET

Westridge Corporate Center
At Columbia Gateway

SCALE
As Shown

SHEET
3 OF 3

CONTRACT NO. 44-3649-D

600 SCALE MAP NO. 43 BLOCK NO. 1