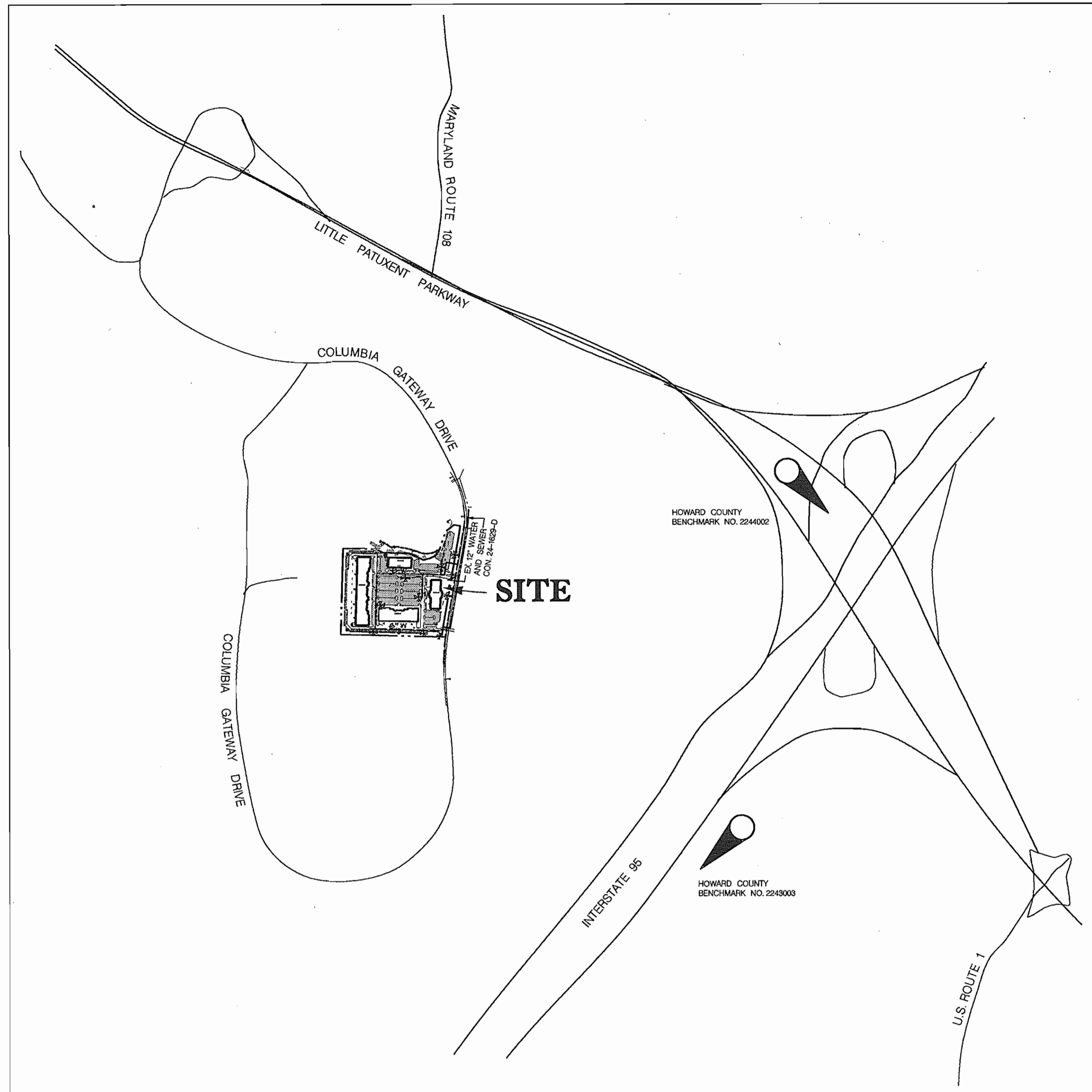


QUANTITIES				
ITEMS	QUANTITIES ESTIMATED	AS-BUILT		
		QUANTITIES	TYPE	MANUFACTURER / SUPPLIER
8" W.	2,012 LF	2010.0 LF	DIP CL 92	GRIFFIN PIPE PRODUCTS CO.
6" W.	136 LF	131.0 LF	DIP CL 92	GRIFFIN PIPE PRODUCTS CO.
8" x 8" TEE	7	7.0 EA.		GRIFFIN PIPE PRODUCTS CO.
8" x 6" TEE	6	6.0 EA.		GRIFFIN PIPE PRODUCTS CO.
6" V.	6	6.0 EA.		U.S. PIPE
8" V.	8	8.0 EA.		U.S. PIPE
FIRE HYDRANT	6	6.0 EA.		KENNEDY VALVE
1/2 BEND	2	2.0 EA.		GRIFFIN PIPE PRODUCTS
8" x 6" TS&V	2			
8" CAP	7	7.0 EA.		GRIFFIN PIPE PRODUCTS
1/2 BEND	1	1.0 EA.		GRIFFIN PIPE PRODUCTS
6" CAP	2			
NAME OF UTILITY CONTRACTOR: KINGSLEY CONSTRUCTION INC.				
SURVEY AND DRAFTING DIVISION AS-BUILT DATE: 01-21-99				



VICINITY MAP

SCALE: 1" = 600'

GENERAL NOTES

- APPROXIMATE LOCATION OF EXISTING MAINS ARE SHOWN. THE CONTRACTOR SHALL TAKE ALL NECESSARY PRECAUTIONS TO PROTECT EXISTING MAINS AND SERVICES AND MAINTAIN UNINTERRUPTED SUPPLY. ANY DAMAGE INCURRED SHALL BE REPAIRED IMMEDIATELY TO THE SATISFACTION OF THE ENGINEER AT THE CONTRACTOR'S EXPENSE.
- ALL HORIZONTAL CONTROLS ARE BASED ON MARYLAND STATE COORDINATES.
- ALL VERTICAL CONTROLS ARE BASED ON U.S.G.S. DATA.
- ALL PIPE ELEVATIONS SHOWN ARE INVERT ELEVATIONS.
- CLEAR ALL UTILITIES BY A MINIMUM OF 6 INCHES.
- FOR DETAILS NOT SHOWN ON THE DRAWINGS, AND FOR MATERIALS AND CONSTRUCTION METHODS, USE HOWARD COUNTY DESIGN MANUAL, VOLUME IV, STANDARD SPECIFICATIONS AND DETAILS FOR CONSTRUCTION. THE CONTRACTOR SHALL HAVE A COPY OF VOLUME IV ON THE JOB.
- WHERE TEST PITS HAVE BEEN MADE ON EXISTING UTILITIES, THEY ARE NOTED BY THE SYMBOL [] AT THE LOCATION OF THE TEST PIT. A NOTE OR NOTES CONTAINING THE RESULTS OF THE TEST PIT OR PITS IS INCLUDED ON THE DRAWINGS. EXISTING UTILITIES IN THE VICINITY OF THE PROPOSED WORK FOR WHICH TEST PITS HAVE NOT BEEN DUG SHALL BE VERIFIED BY THE CONTRACTOR TO HIS OWN SATISFACTION. ANY DAMAGE TO EXISTING FACILITIES DUE TO THE CONTRACTOR'S NEGLIGENCE SHALL BE REPAIRED AT THE CONTRACTOR'S EXPENSE.
- CONTRACTOR SHALL NOTIFY THE FOLLOWING UTILITIES OR AGENCIES AT LEAST FIVE WORKING DAYS BEFORE STARTING WORK SHOWN ON THESE PLANS:
 - STATE HIGHWAY ADMINISTRATION - 410-531-5533
 - BALTIMORE GAS & ELECTRIC CO. - CONTRACTOR SERVICES 410-561-2585
 - BALTIMORE GAS & ELECTRIC CO. UNDERGROUND DAMAGE CONTROL - 410-234-5621
 - BALTIMORE GAS & ELECTRIC CO. TROUBLE SHOOTING - 410-298-9013
 - MISS UTILITY - 1-800-559-0100
 - COLONIAL PIPELINE CO. - 410-795-1390
 - BUREAU OF UTILITIES, HOWARD COUNTY DEPARTMENT OF PUBLIC WORKS - 410-992-2366
- TREES AND SHRUBS ARE TO BE PROTECTED FROM DAMAGE TO MAXIMUM EXTENT. TREES AND SHRUBS LOCATED WITHIN THE CONSTRUCTION STRIP ARE NOT TO BE REMOVED OR DAMAGED BY THE CONTRACTOR.
- CONTRACTOR SHALL REMOVE TREES, STUMPS AND ROOTS ALONG LINE OF EXCAVATION. PAYMENT FOR SUCH REMOVAL SHALL BE INCLUDED IN THE UNIT PRICE BID FOR CONSTRUCTION OF THE MAIN.
- THE CONTRACTOR SHALL NOTIFY THE BUREAU OF HIGHWAYS, HOWARD COUNTY, AT 410-313-2450 AT LEAST FIVE (5) WORKING DAYS BEFORE ANY OPEN CUT OF ANY COUNTY ROAD OR BORING/JACKING OPERATION IN COUNTY ROADS FOR LAYING WATER/SEWER MAINS OR HOUSE CONNECTIONS. THE APPROVAL OF THESE DRAWINGS WILL CONSTITUTE COMPLIANCE WITH DPW REQUIREMENTS PER SECTION 18.141(G) OF THE HOWARD COUNTY CODE.

PART II - WATER

- ALL WATER MAINS TO BE D.I.P. CLASS 52 UNLESS OTHERWISE NOTED.
- TOPS OF ALL WATER MAINS TO HAVE A MINIMUM OF 3-1/2' COVER UNLESS OTHERWISE NOTED.
- VALVES ADJACENT TO TEES SHALL BE STRAPPED TO TEES.
- ALL FITTINGS SHALL BE BUTTRESSED OR ANCHORED WITH CONCRETE IN ACCORDANCE WITH THE STANDARD DETAILS UNLESS OTHERWISE PROVIDED FOR ON THE DRAWINGS.
- FIRE HYDRANTS SHALL BE SET TO THE BURY LINE ELEVATIONS SHOWN ON THE DRAWINGS. ALL FIRE HYDRANTS SHALL BE STRAPPED AND BUTTRESSED WITH CONCRETE IN ACCORDANCE WITH STANDARD DETAILS. SOIL AROUND THE FIRE HYDRANT SHALL BE COMPACTED IN ACCORDANCE WITH SECTION 1003 OF THE STANDARD SPECIFICATIONS.
- THE CONTRACTOR SHALL NOT OPERATE ANY WATER MAIN VALVES ON THE EXISTING WATER SYSTEM.
- ALL WATER HOUSE CONNECTIONS SHALL BE FOR INSIDE METER SETTING, UNLESS OTHERWISE NOTED ON THE PLANS OR IN THE SPECIFICATIONS.
- ALL D.I.P. FITTINGS SHALL BE IN ACCORDANCE WITH A.W.W.A. SPECIFICATION C-153 DUCTILE IRON COMPACT FITTINGS, 3 INCH THROUGH 12 INCH FOR WATER AND OTHER LIQUIDS.
- ALL EXISTING VALVES TO BE CLOSED WHEN CONNECTION TO THE SYSTEM IS MADE.

WATER AS-BUILT

CONTRACT NO. 44-3648-D

Westridge Corporate Center

At Columbia Gateway
Howard County, Maryland
Department of Public Works

REVIEWED FOR NATURAL RESOURCES CONSERVATION SERVICE AND MEETS TECHNICAL REQUIREMENT
Cheryl Simmons / as 12/16/97
SIGNATURE DATE

THIS DEVELOPMENT PLAN IS APPROVED FOR SOIL EROSION AND SEDIMENT CONTROL BY THE HOWARD COUNTY CONSERVATION DISTRICT.
Jeffrey J. Schaefer 12/16/97
APPROVED HOWARD S.C.D. DATE

SEDIMENT CONTROL MEASURES WILL BE IMPLEMENTED IN ACCORDANCE WITH SECTION 219 OF THE SPECIFICATIONS AND WITH ROAD CONSTRUCTION PLANS SDP-98-40.

TYPE OF BUILDING: OFFICE BUILDING & WAREHOUSE
NO. OF LOTS / PARCELS: 1
NO. OF WATER HOUSE CONNECTIONS: 2
NO. OF SEWER HOUSE CONNECTIONS: 2
DRAINAGE AREA: DORSEY RUN
TREATMENT PLANT: LITTLE PATUXENT WATER RECLAMATION PLANT SAVAGE, HOWARD COUNTY
WATER CODE: E06
TEST GRADIENT: 700
SEWER CODE: 3380000

For Revision 4 by Tesseract Sites, Inc.

PARCEL S-23 BUILDINGS A,B+C, COLUMBIA GATEWAY DRIVE

DEPARTMENT OF PUBLIC WORKS
HOWARD COUNTY, MARYLAND
Robert M. Bruns 12-9-97
CHIEF - BUREAU OF UTILITIES - DATE

DEPARTMENT OF PLANNING & ZONING
HOWARD COUNTY, MARYLAND
Michael J. Damman 12/16/97
CHIEF - DEVELOPMENT ENGINEERING DIVISION 1 DATE

DMW
Daft · McCune · Walker, Inc.
A Team of Land Planners, 200 East Pennsylvania Avenue
Landscape Architects, Towson, Maryland 21286
Engineers, Surveyors & Environmental Professionals 410 296 3333 Fax 296 4705



DESIGN BY:	DFM				
DRAWN BY:	MSS	TS/AC	4	REV. QUANTITIES FOR Reloc Hydrant for New Bldg E	7/02/07
CHECKED BY:	JLS	JWM	3	REV. QUANTITIES	7-20-98
DATE:	Nov. 7, 1997	DMW	2	REV. QUANTITIES	4-27-98
		DMW	1	BILL OF MATERIALS	12/24/97
		BY	NO.	REVISION	DATE

Phase One
TITLE SHEET
600 SCALE MAP NO. 43 BLOCK NO. 1

Westridge Corporate Center
At Columbia Gateway
6th ELECTION DISTRICT - HOWARD COUNTY, MARYLAND
CONTRACT NO. 44-3648-D

SHEET 1 OF 3

N 490250
E 856500

W.L. STA. 0+00.
REMOVE EXISTING CAP &
BUTTRISS AND CONNECT
TO EXISTING WATER

CONTRACTOR SHALL TEST FIT FOR
LOCATION AND DEPTH OF EXISTING
8" WATER STUB BEFORE FINAL AND
GRADE WILL BE GIVEN.

EXISTING HYDRANT TO BE
REMOVED AND RELOCATED
BURY LINE ELEV. 308.6 +/-

Remove Existing
Hydrant & 6" Lead
and install 6" Cap
and buttress.

EXISTING HYDRANT TO BE
REMOVED AND RELOCATED
BURY LINE ELEV. 321.8 +/-

EXISTING HYDRANT TO BE
REMOVED AND RELOCATED
BURY LINE ELEV. 331.00 +/-

CONTRACTOR SHALL TEST FIT FOR
LOCATION AND DEPTH OF EXISTING
8" WATER STUB BEFORE FINAL AND
GRADE WILL BE GIVEN.



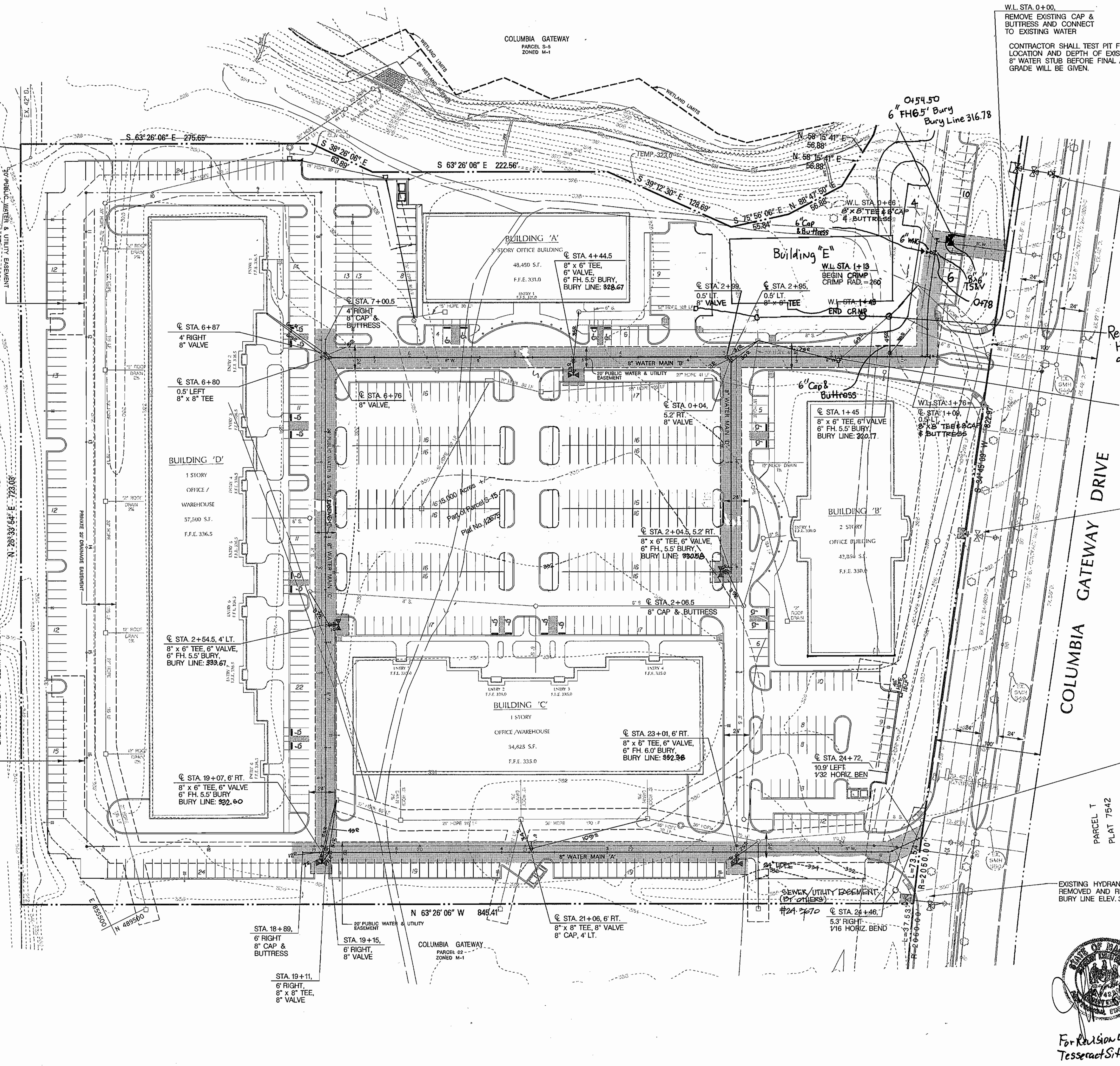
For Revision 4 by
Tesseract Sites, Inc.

LEGEND

- - - - - EXISTING 10' CONTOUR
- - - - - EXISTING 2' CONTOURS
- TRENCH DRAIN MANHOLE, TYP.
- STORM DRAIN INLET
- STORM DRAIN PIPE
- YARD INLET OR COURTYARD DRAIN
- TEE
- WATER LINE
- WATER VALVE
- FIRE HYDRANT
- SEWER MANHOLE
- SEWER LINE

STRUCTURE SCHEDULE

STA 1+15, CONNECT TO EX. 8" WATER N 489693.20 E 856545.08	STA 2+04.5, 8" x 6" TEE N 489537.24 E 856176.13
STA 1+15, 1/8 HORIZ BEND N 489730.52 E 856440.91	STA 2+54.5, 8" x 6" TEE N 489654.43 E 855909.96
STA 0+30.5, BEGIN CRIMP N 489664.25 E 856447.61	STA 18+89, 8" CAP N 489460.58 E 855693.21
STA 0+59, END CRIMP N 489698.27 E 856461.79	STA 19+07, 8" x 6" TEE N 489472.44 E 855709.49
STA 1+09, 1/8 HORIZ BEND N 489636.50 E 856433.74	STA 19+11, 8" x 8" TEE N 489470.66 E 855713.06
STA 1+45, 8" x 6" TEE N 489652.38 E 856401.97	STA 19+11, 8" VALVE N 489473.93 E 855714.74
STA 2+95, 8" x 8" TEE N 489719.70 E 856267.37	STA 19+15, 8" VALVE N 489469.02 E 855716.35
STA 4+44.5, 8" x 6" TEE N 489786.44 E 856133.87	STA 19+15, 8" VALVE N 489469.02 E 855716.35
STA 6+76, 8" VALVE N 489889.97 E 855926.84	STA 24+46, 1/4 HORIZ BEND N 489231.52 E 856191.26
STA 6+80, 8" x 8" TEE N 489891.61 E 855923.56	STA 24+72, 1/4 HORIZ BEND N 489230.86 E 856221.33
STA 6+87, 8" VALVE N 489894.89 E 855925.20	STA 24+74, 1/4 HORIZ BEND CONNECT TO EX. WATER N 489230.43 E 856223.29
STA 1+33, 8" x 8" TEE N 489718.78 E 856356.88	STA 7+00.5, 8" CAP N 489907.11 E 855931.32
	STA 0+04, 8" VALVE N 489716.43 E 856265.72
STA 2+99, 8" VALVE N 489721.29 E 856294.04	STA 2+06.5, 8" CAP & BUTTRISS N 489535.45 E 856175.24



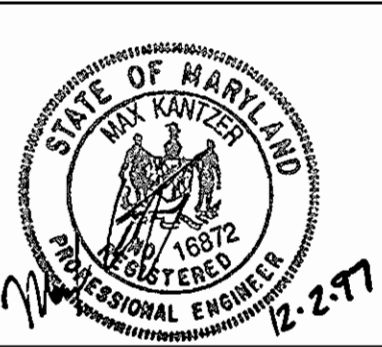
DEPARTMENT OF PUBLIC WORKS
HOWARD COUNTY, MARYLAND

Robert M. Benion 12-9-97
CHIEF - BUREAU OF UTILITIES - DATE

DEPARTMENT OF PLANNING & ZONING
HOWARD COUNTY, MARYLAND

[Signature] 12/16/97
CHIEF - DEVELOPMENT ENGINEERING DIVISION - DATE

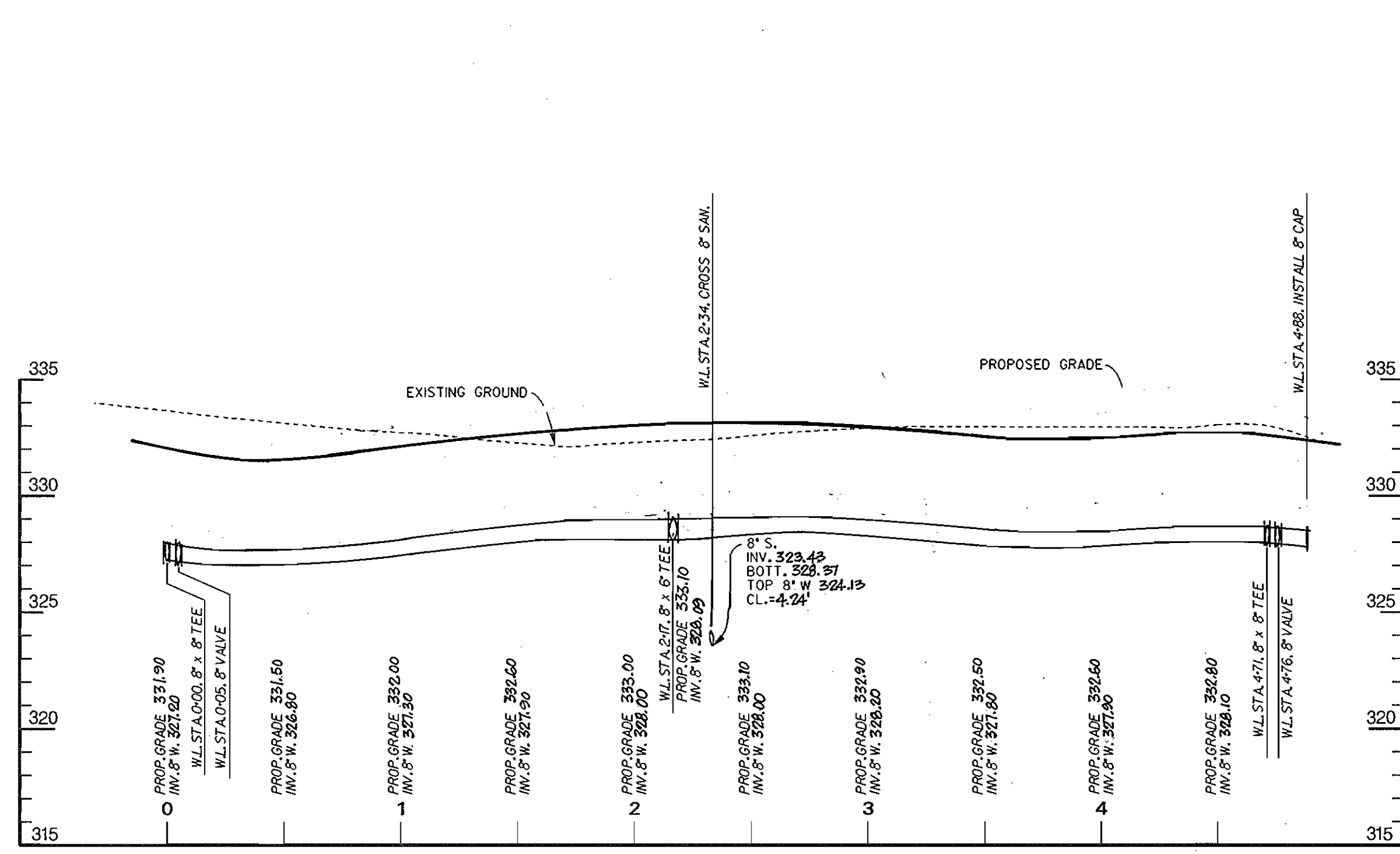
DMW
Daft · McCune · Walker, Inc.
A Team of Land Planners, 200 East Pennsylvania Avenue
Landscape Architects, Towson, Maryland 21286
Engineers, Surveyors & Environmental Professionals 410 286 3333
Fax 296 4705



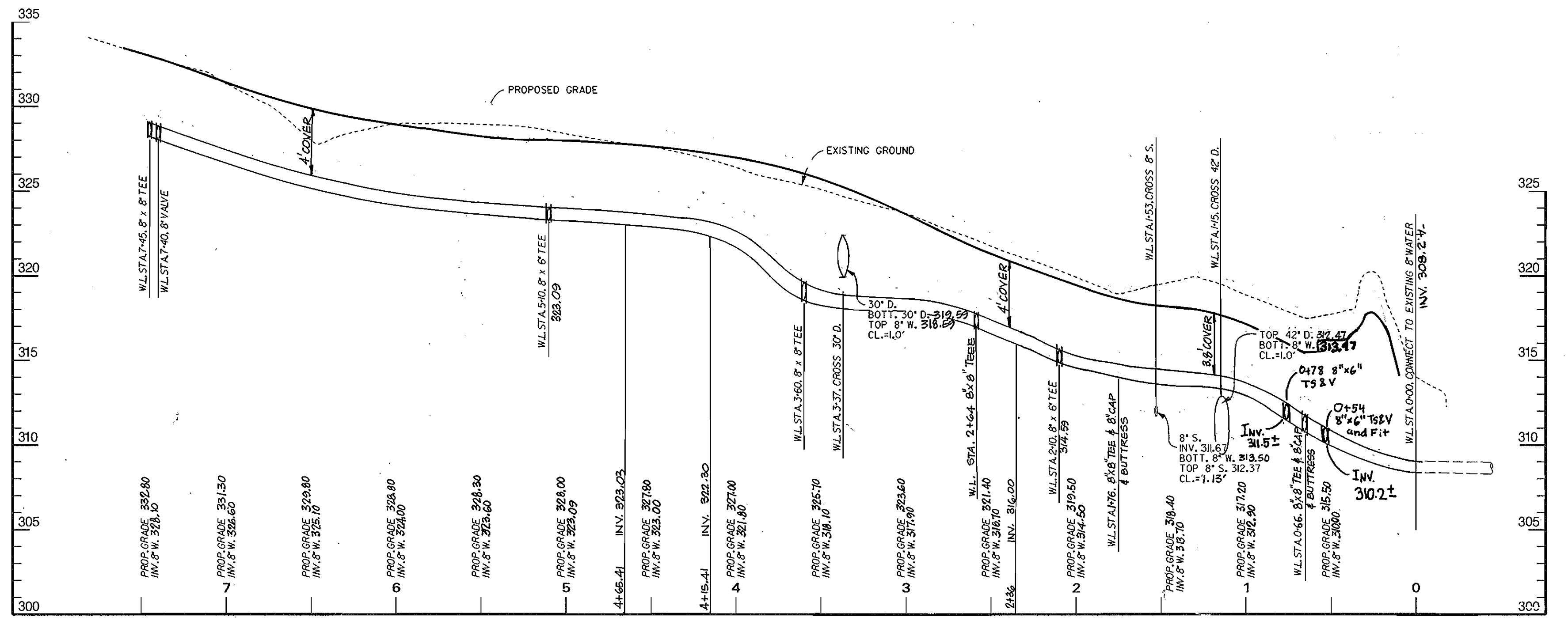
DESIGN BY:	TS INC	4	Removed Parking & Relocated Hydrant for Building "E"	7/2/07
DRAWN BY: <td>JWM</td> <td>3</td> <td>REVISED WATER HOUSE LOCATIONS</td> <td>7-20-06</td>	JWM	3	REVISED WATER HOUSE LOCATIONS	7-20-06
CHECKED BY: <td>DMW</td> <td>2</td> <td>REV. PKG. ADD PROP. SEWER, REV. WATER HOUSE CONNECTION TO BLDG D</td> <td>4-17-06</td>	DMW	2	REV. PKG. ADD PROP. SEWER, REV. WATER HOUSE CONNECTION TO BLDG D	4-17-06
DATE: <td>DMW</td> <td>1</td> <td>BURY LINE ELEVATIONS</td> <td>12/24/97</td>	DMW	1	BURY LINE ELEVATIONS	12/24/97
NOV. 18, 1997	BY	NO.	REVISION	DATE

Phase One
PLAN SHEET
600 SCALE MAP NO. 43 BLOCK NO. 1

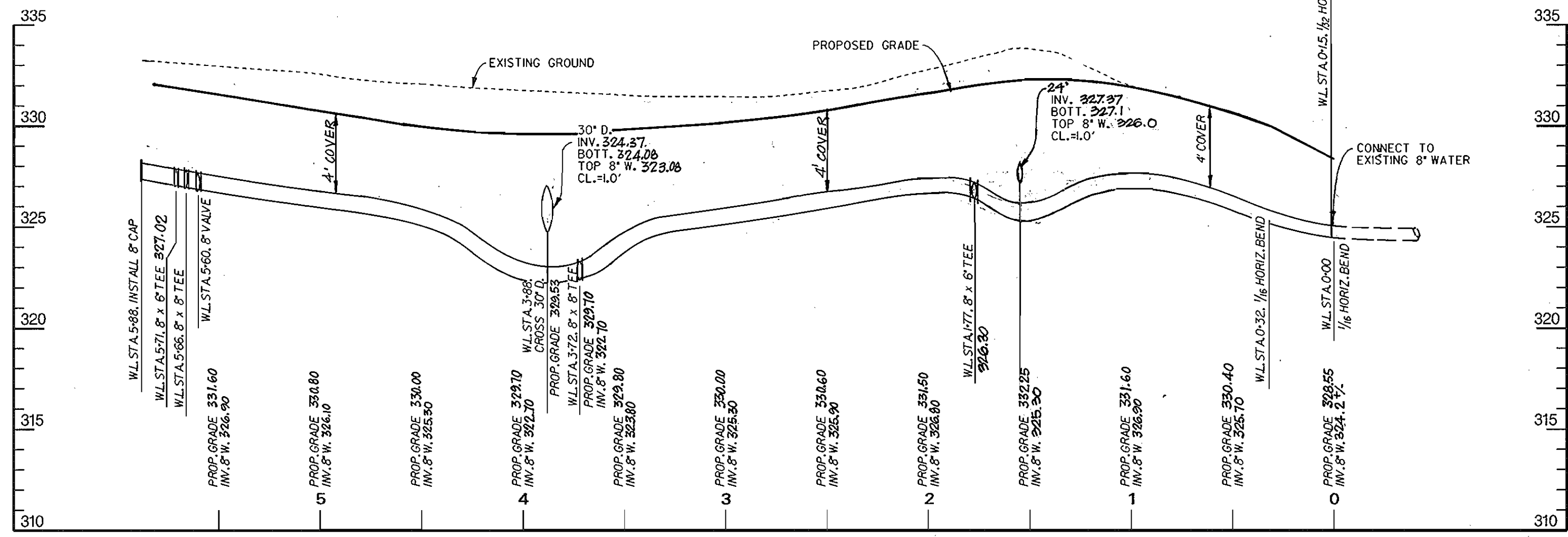
Westridge Corporate Center
At Columbia Gateway
CONTRACT NO. 44-3648-D
SCALE 1"=50'
SHEET 2 OF 3



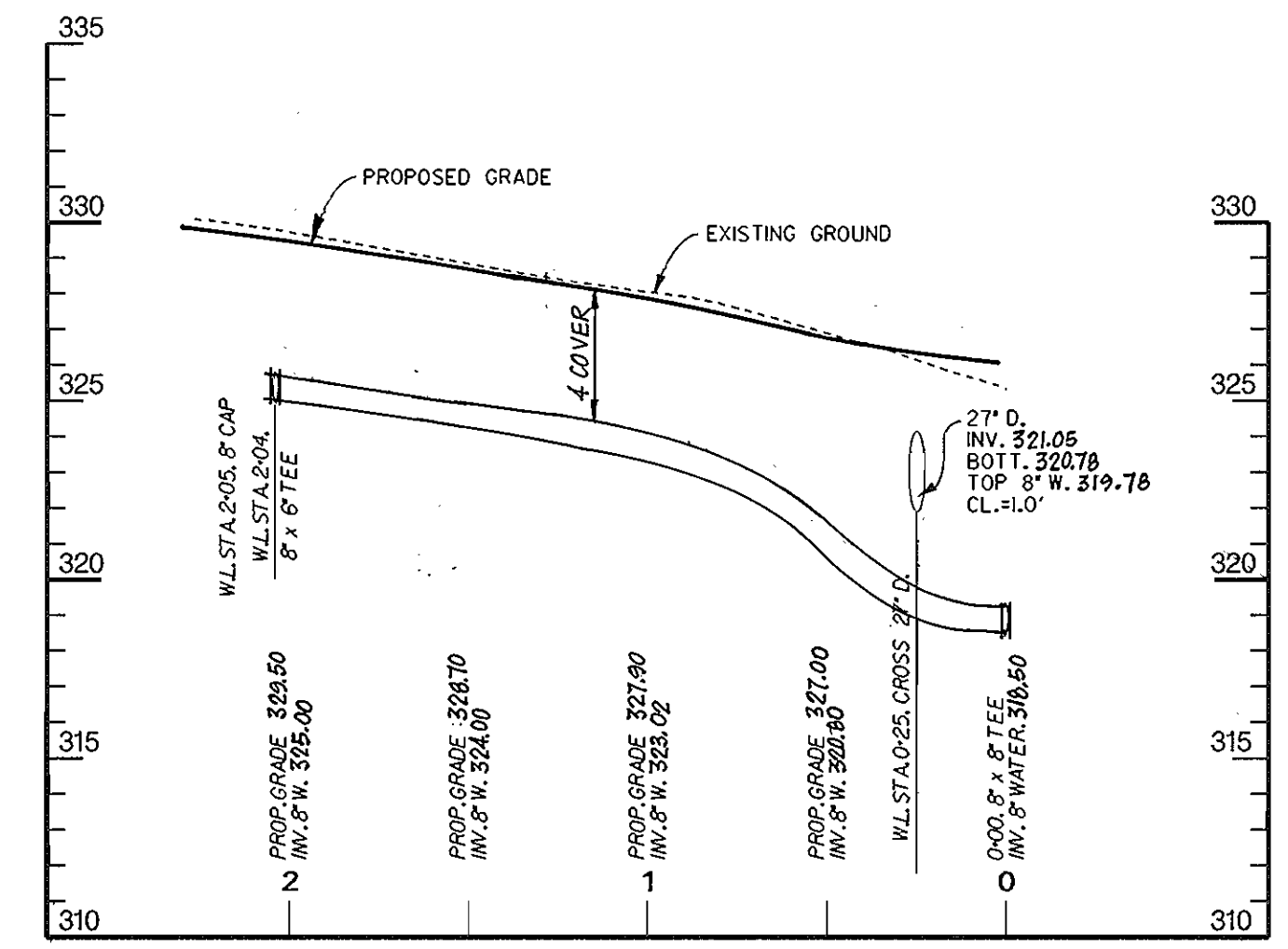
8" WATER MAIN 'C'



8" WATER MAIN 'B'



8" WATER MAIN 'A'



8" WATER MAIN 'D'

PROFILE
SCALE: HORIZ. 1"=50'
VERT. 1"=5'



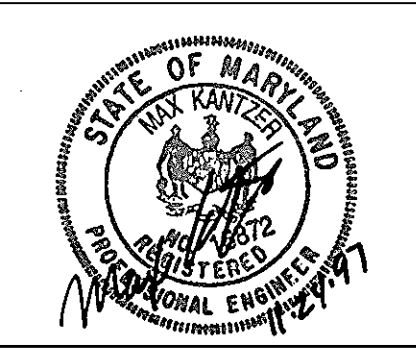
For Revision 4 by
Tesseract Sites, Inc.

F:\Nov 21 10:16:06 1997 T:\080360\080360.dwg

DEPARTMENT OF PUBLIC WORKS
HOWARD COUNTY, MARYLAND
Robert Dennis 12-9-97
CHIEF - BUREAU OF UTILITIES - DATE

DEPARTMENT OF PLANNING & ZONING
HOWARD COUNTY, MARYLAND
William Dammann 12/16/97
CHIEF - DEVELOPMENT ENGINEERING DIVISION - DATE

DMW
Daft · McCune · Walker, Inc.
A Team of Land Planners, 200 East Pennsylvania Avenue
Landscape Architects, Towson, Maryland 21286
Engineers, Surveyors & Environmental Professionals 410 296 3333
Fax 296 4705



DESIGN BY:	DFM		
DRAWN BY:	MSS	TS INC 4	REVISED 8" WATER MAINS FOR SUE E CONNOR'S REL. FR 10/2/07
CHECKED BY:	JLS	JWM 3	REVISED 8" WATER MAIN 'A', 'B', 'C', & 'D' 7-20-98
DATE:	Nov. 18, 1997	DMW 2	REVISE 8" WATER MAIN 'A' & 'C'
		DMW 1	REVISE PROFILES DUE TO GRADE CHANGE 12/24/97
		BY NO.	REVISION
			DATE

Phase One
PROFILES SHEET
600 SCALE MAP NO. 43 BLOCK NO. 1

Westridge Corporate Center
At Columbia Gateway
CONTRACT NO. 44-3648-D
SCALE As Shown
SHEET 3 OF 3