

SHEET INDEX	
NO.	DESCRIPTION
1	TITLE SHEET
2	WATER AND SEWER PLAN AND PROFILES

WATER AND SEWER EXTENSIONS

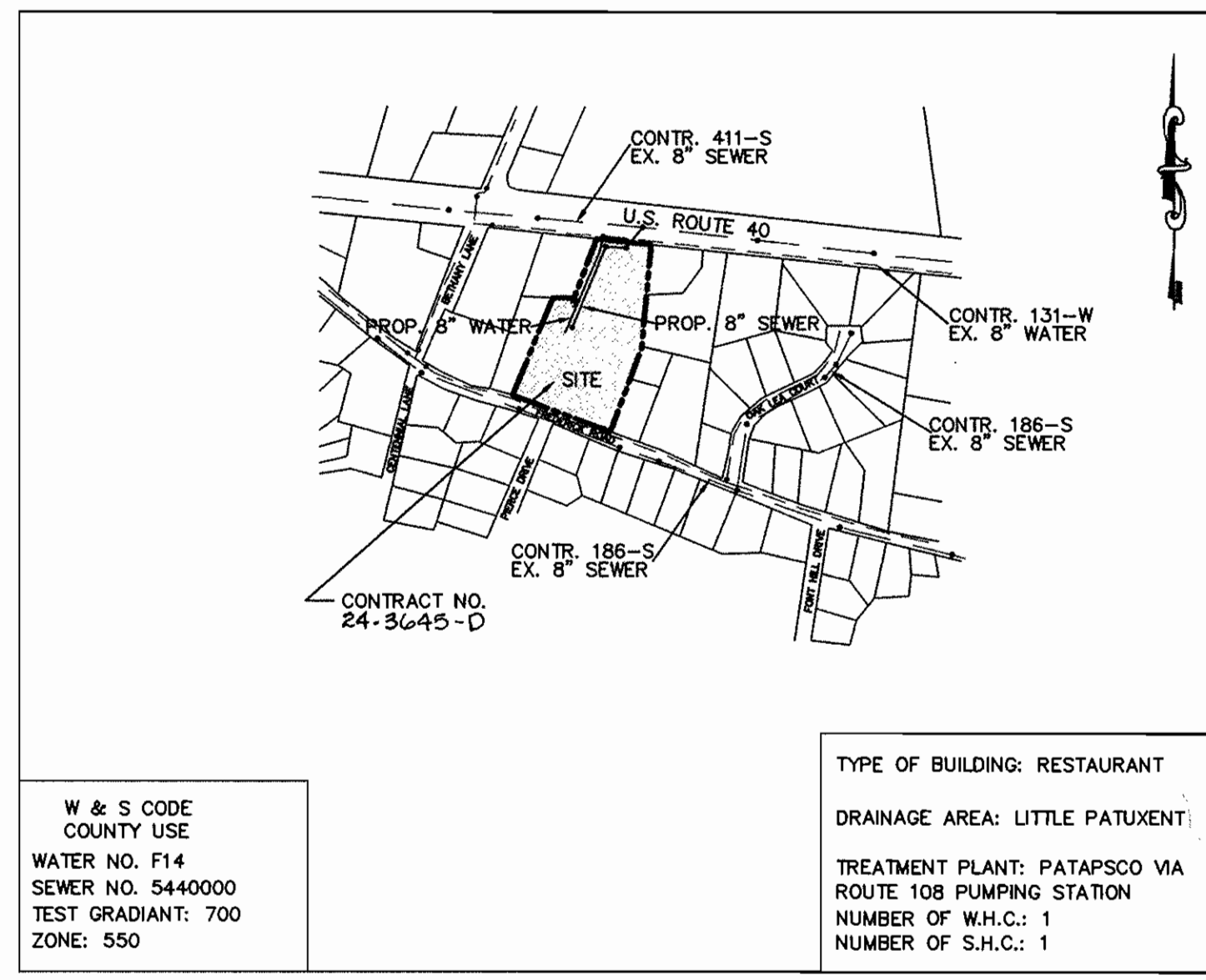
STAVLAS - ROUTE 40 DINER

2nd ELECTION DISTRICT
HOWARD COUNTY, MARYLAND
CONTRACT NO. 24-3645-D

GENERAL NOTES

1. APPROXIMATE LOCATION OF EXISTING MAINS ARE SHOWN. THE CONTRACTOR SHALL TAKE ALL NECESSARY PRECAUTIONS TO PROTECT EXISTING MAINS AND SERVICES AND MAINTAIN UNINTERRUPTED SUPPLY. ANY DAMAGE INCURRED SHALL BE REPAIRED IMMEDIATELY TO THE SATISFACTION OF THE ENGINEER AT THE CONTRACTOR'S EXPENSE.
2. ALL HORIZONTAL CONTROLS ARE BASED ON MARYLAND STATE COORDINATES. [NORTH AMERICAN DATUM OF 1983 (NAD'83)].
3. ALL VERTICAL CONTROLS ARE BASED ON U.S.G.S. DATA.
4. ALL PIPE ELEVATIONS SHOWN ARE INVERT ELEVATIONS.
5. CLEAR ALL UTILITIES BY A MINIMUM OF 6". CLEAR ALL POLES BY 2' - 0" MINIMUM OR TUNNEL AS REQUIRED. THE OWNER HAS CONTACTED THE UTILITY COMPANIES AND HAS MADE ARRANGEMENTS FOR BRACING OF POLES AS SHOWN ON THE DRAWINGS. IN THE EVENT THE CONTRACTOR'S WORK REQUIRES THE BRACING OF ADDITIONAL POLES, ANY COST INCURRED BY THE OWNER FOR BRACING OF ADDITIONAL POLES OR DAMAGES SHALL BE DEDUCTED FROM MONEY OWED THE CONTRACTOR. THE CONTRACTOR SHALL COORDINATE WITH THE UTILITY COMPANIES TO SCHEDULE THE BRACING OF THE POLES.
6. FOR DETAILS NOT SHOWN ON THE DRAWINGS, AND FOR MATERIALS AND CONSTRUCTION METHODS USE HOWARD COUNTY DESIGN MANUAL, VOLUME IV, STANDARD SPECIFICATIONS AND DETAIL FOR CONSTRUCTION (LATEST EDITION). THE CONTRACTOR SHALL HAVE A COPY OF VOLUME IV ON THE JOB.
7. WHERE TEST PITS HAVE BEEN MADE ON EXISTING UTILITIES, THEY ARE NOTED BY THE SYMBOL AT THE LOCATION OF THE TEST PIT. A NOTE OR NOTES CONTAINING THE RESULTS OF THE TEST PIT OR PITS IS INCLUDED ON THE DRAWINGS. EXISTING UTILITIES IN THE VICINITY OF THE PROPOSED WORK FOR WHICH TEST PITS HAVE NOT BEEN DUG SHALL BE LOCATED BY THE CONTRACTOR TWO WEEKS IN ADVANCE OF CONSTRUCTION OPERATIONS AT HIS OWN EXPENSE.
8. CONTRACTOR SHALL NOTIFY THE FOLLOWING UTILITY COMPANIES OR AGENCIES AT LEAST FIVE (5) WORKING DAYS BEFORE STARTING WORK SHOWN ON THESE PLANS.

AT & T	865-3803
BG & E - (CONTRACTOR SERVICES)	850-4620
BG & E - UNDERGROUND DAMAGE CONTROL	787-9068
BUREAU OF UTILITIES (DPW)	313-4900
CHESAPEAKE & POTOMAC TELEPHONE CO.	597-8585
COLONIAL PIPELINE CO.	795-1390
MISS UTILITY	(800) 257-7777
STATE HIGHWAY ADMINISTRATION	531-5533
9. TREES AND SHRUBS ARE TO BE PROTECTED FROM DAMAGE TO MAXIMUM EXTENT. TREES AND SHRUBS LOCATED WITHIN THE CONSTRUCTION STRIP ARE NOT TO BE REMOVED OR DAMAGED BY THE CONTRACTOR.
10. CONTRACTOR SHALL REMOVE TREES, STUMPS, AND ROOTS ALONG LINE OF EXCAVATION. PAYMENT FOR SUCH REMOVAL SHALL BE INCLUDED IN THE UNIT PRICE BID FOR CONSTRUCTION OF THE MAIN.
11. THE CONTRACTOR SHALL NOTIFY THE BUREAU OF HIGHWAYS, HOWARD COUNTY, AT (410) 313-2450 AT LEAST FIVE (5) WORKING DAYS BEFORE ANY OPEN CUT OF ANY COUNTY ROAD OR BORING/JACKING OPERATION IN COUNTY ROADS FOR LAYING WATER/SEWER MAINS OR HOUSE CONNECTIONS. THE APPROVAL OF THESE DRAWINGS WILL CONSTITUTE COMPLIANCE WITH DPW REQUIREMENTS PER SECTION 18.114(A) OF THE HOWARD COUNTY CODE.
12. ALL WATER MAINS TO BE D.I.P. CLASS 52 UNLESS OTHERWISE NOTED.
13. TOPS OF ALL WATER MAINS TO HAVE A MINIMUM OF 3-1/2" COVER UNLESS OTHERWISE NOTED.
14. VALVES ADJACENT TO TEES SHALL BE STRAPPED TO TEES.
15. ALL FITTINGS SHALL BE BUTTRESSED OR ANCHORED WITH CONCRETE IN ACCORDANCE WITH THE STANDARD DETAILS UNLESS OTHERWISE PROVIDED FOR ON THE DRAWINGS.
16. FIRE HYDRANTS SHALL BE SET TO THE BURY LINE ELEVATIONS SHOWN ON THE DRAWINGS. ALL FIRE HYDRANTS SHALL BE RESTRAINED AND BUTTRESSED WITH CONCRETE IN ACCORDANCE WITH THE STANDARD DETAILS. SOIL AROUND THE FIRE HYDRANT SHALL BE COMPACTED IN ACCORDANCE WITH SECTION 1000 AND 1005 OF THE STANDARD SPECIFICATIONS.
17. THE CONTRACTOR SHALL NOT OPERATE ANY WATER MAIN VALVES ON THE EXISTING WATER SYSTEM.
18. ALL WATER HOUSE CONNECTIONS SHALL BE FOR INSIDE METER SETTING UNLESS OTHERWISE NOTED ON PLANS OR IN SPECIFICATIONS.
19. FOR SPRINKLER SYSTEM FOR ALL TOWNHOMES OR MULTI-FAMILY DWELLING UNITS SHOULD HAVE A MINIMUM OF 1' CONNECTION WITH A 3/4" METER.
20. ALL SEWER MAINS SHALL BE P.V.C. OR D.I.P. CLASS 52 UNLESS OTHERWISE NOTED.
21. ALL MANHOLES SHALL BE 4' - 0" INSIDE DIAMETER UNLESS OTHERWISE NOTED.
22. FORCE MAINS SHALL BE D.I.P. ONLY.
23. MANHOLES DESIGNATED W.T. IN PLAN AND PROFILE SHALL HAVE WATERTIGHT FRAME AND COVERS, STANDARD DETAIL G5.52. WHERE WATERTIGHT FRAME AND COVER IS USED, SET TOP OF FRAME 1" - 6" ABOVE FINISHED GRADE UNLESS OTHERWISE NOTED ON THE DRAWINGS.
24. HOUSE(S) WITH THE SYMBOL "C.N.S." INDICATES THAT CELLAR CANNOT BE SERVED.



VICINITY MAP
SCALE: 1" = 600'

QUANTITIES				
ITEMS	QUANTITIES ESTIMATED	AS-BUILT		
		QUANTITIES	TYPE	MANUFACTURER/SUPPLIER
8" WATER D.I.P.	282'			
6" WATER D.I.P.	7'			
8" 1/16 BEND	1			
8" VALVES	3			
8"x8" TEE	1			
8"x6" TEE	1			
6" VALVES	1			
FIRE HYDRANT	1			
8"x8" TAP SLEEVE	1			
8"x4" TEE	1			
4"x 1 1/2" TEE	1			
1 1/2" WATER D.I.P.	15'			
4" WATER D.I.P.	23'			
1 1/2" 90° BEND	1			
1 1/2" WATER METER	1			
DETECTOR CHECK METER	1			
8" SEWER P.V.C.	329'			
8" SEWER D.I.P.	46'			
4" SEWER P.V.C.	50'			
PRECAST MANHOLES	3			
2000 GALLON GREASE TRAP	1			

NAME OF UTILITY CONTRACTOR:	CHECK BOX
SEDIMENT CONTROL MEASURES FOR THIS CONTRACT WILL BE IMPLEMENTED IN ACCORDANCE WITH SECTION 21a OF THE SPECIFICATIONS AND AS SHOWN ON SDP-78-3e.	AS-BUILT DATE
	SURVEY AND DRAFTING DIVISION

REVIEW FOR HOWARD SOIL CONSERVATION DISTRICT AND MEETS TECHNICAL REQUIREMENTS.
Clayton Sommers 10/31/97
NATURAL RESOURCES CONSERVATION SERVICE

THIS PLAN IS APPROVED FOR SOIL EROSION AND SEDIMENT CONTROL BY THE HOWARD SOIL CONSERVATION DISTRICT.
John P. Roberts 10/31/97
HOWARD SOIL CONSERVATION DISTRICT

DEPARTMENT OF PUBLIC WORKS
HOWARD COUNTY, MARYLAND
Robert B. Bunting 10-27-97
CHIEF, BUREAU OF UTILITIES

DEPARTMENT OF PLANNING AND ZONING
HOWARD COUNTY, MARYLAND
John P. Roberts 10/27/97
CHIEF, DEVELOPMENT ENGINEERING DIVISION

GAMMA ENGINEERING
844 WEST STREET
ANNAPOLIS, MD 21401
(410) 626-1070



DES: MHH				
DRN: BAT				
CHK: MHH				
DATE: 9 - 97	BY	NO.	REVISION	DATE

TITLE SHEET

600' SCALE MAP NO. BLOCK NO.

STAVLAS - ROUTE 40
DINER
2nd ELECTION DISTRICT
HOWARD COUNTY, MARYLAND
CONTRACT # 24-3645-D

SCALE AS SHOWN
SHEET 1 OF 2

