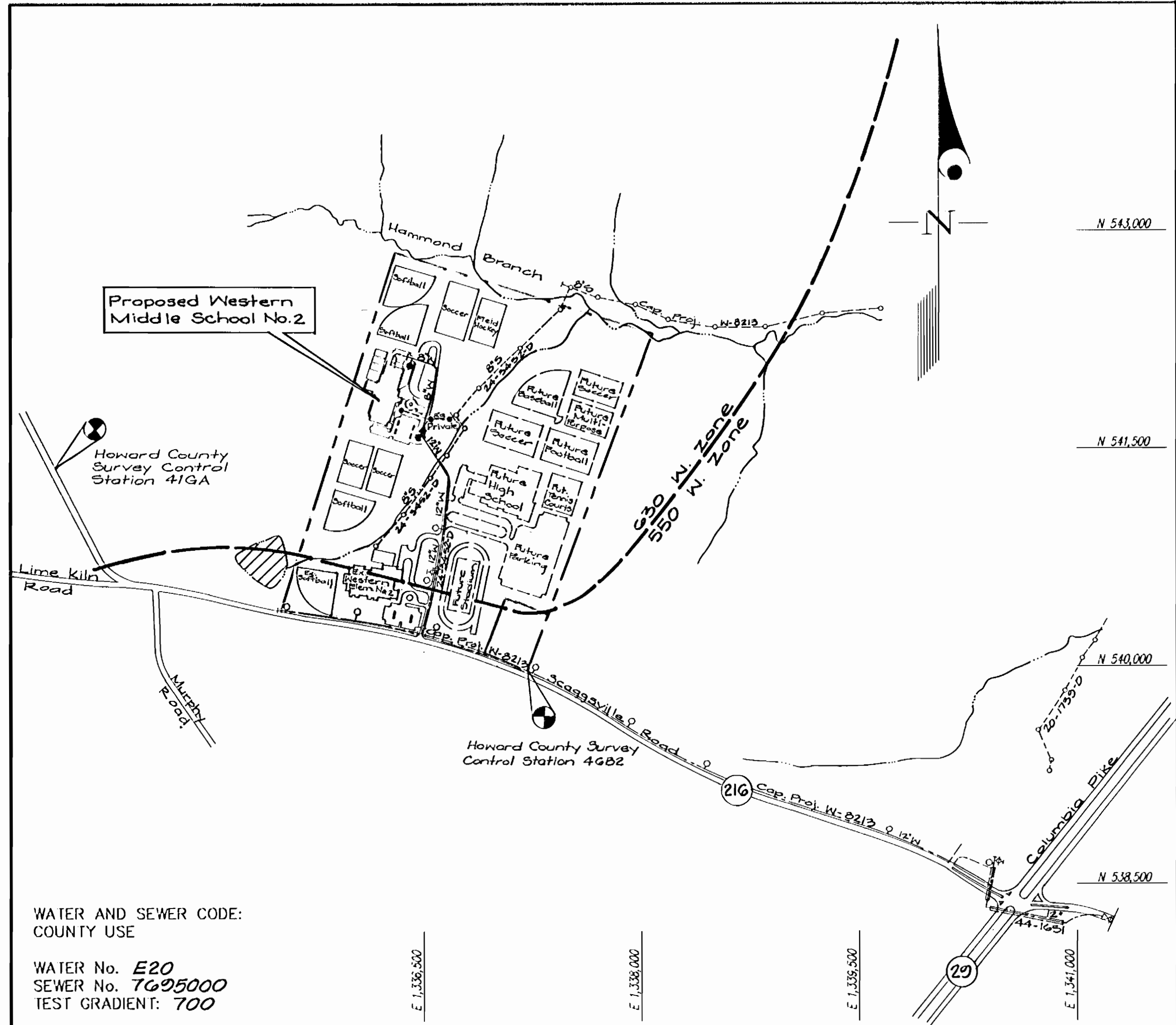


QUANTITIES				
ITEMS	QUANTITIES ESTIMATED	AS-BUILT		
		QUANTITIES	TYPE	MANUFACTURER/SUPPLIER
12" Water	705 l.f.	700 3/4 l.f.	CL 52 D.I.P.	ATLANTIC STATES
12" Valve	2 ea.	2 EA.	12" M.J.G.V.	MUELLER CO.
12" - 1/2" H.B.	1 ea.	1 EA.	M.J.C.L. 52	UNION FOUNDRY
12" - 1/2" H.B.	1 ea.	1 EA.	M.J.C.L. 52	"
12" x 8" Reducer	1 ea.	1 EA.	M.J.C.L. 52	"
8" Water	645 l.f.	640 5/8 l.f.	CL 52 D.I.P.	ATLANTIC STATES
8" Valve	2 ea.	2 EA.	8" M.J.G.V.	MUELLER CO.
8" - 1/2" H.B.	2 ea.	2 EA.	M.J.C.L. 52	UNION FOUNDRY
8" - 1/2" V.B.	2 ea.	2 EA.	M.J.C.L. 52	UNION FOUNDRY
Fire Hydrant Valve	2 ea.	2 EA.	M.J.C.L. 52	"
6" Water	25 l.f.	26 7/8 l.f.	A423	MUELLER CO.
8" x 6" TEE	1 ea.	1 EA.	M.J.C.L. 52	UNION FOUNDRY
12" x 8" TEE	1 ea.	1 EA.	M.J.C.L. 52	"
12" x 6" TEE	1 ea.	1 EA.	M.J.C.L. 52	"
12" SLEEVE	1 ea.	1 EA.	M.J.C.L. 52	"
6" VALVE	1 ea.	1 EA.	8" 1888L	AMERICAN VALVE CO.

NAME OF UTILITY CONTRACTOR: RICHARD F. KLING, FREDERICK MD. FOREMAN: BILL MONTLEY
 SURVEY AND DRAFTING DIV. CHECKBOX: AS-BUILT DATE: 9/29/92



WATER AND SEWER CODE:
 COUNTY USE
 WATER No. E20
 SEWER No. 7695000
 TEST GRADIENT: 700

VICINITY MAP
 SCALE: 1"=600'

WESTERN MIDDLE SCHOOL No. 2
 CONTRACT No. 44-3633-D
 CLARKSVILLE ELECTION DISTRICT No. 5
 HOWARD COUNTY, MARYLAND
 DEPARTMENT OF PUBLIC WORKS

TYPE OF BUILDING	Institutional (School)
NUMBER OF UNITS	1
NUMBER OF S.H.C.'s	1
NUMBER OF W.H.C.'s	1
DRAINAGE AREA	Little Patuxent
TREATMENT PLANT	Little Patuxent Water Quality Management Ctr.

GENERAL NOTES

- PART I**
- Approximate location of existing mains are shown. The contractor shall take all necessary precautions to protect existing mains and services and maintain uninterrupted supply. Any damage incurred shall be repaired immediately to the satisfaction of the Engineer at the Contractor's expense.
 - All horizontal controls are based on Maryland State Coordinates [North American Datum 1983 (NAD '83)].
 - All vertical controls are based on U.S.C.S. data.
 - All pipe elevations shown are invert elevations.
 - Clear all utilities by a minimum of 6". Clear all poles by 2'-0" minimum or tunnel as required. The owner has contacted the utility companies and has made arrangements for bracing of poles as shown on the drawings. In the event the contractor's work requires the bracing of additional poles, any cost incurred by the owner for bracing of additional poles or damages shall be deducted from money owed the contractor. The contractor shall coordinate with the utility companies to schedule the bracing of the poles.
 - For details not shown on the drawings, and for materials and construction methods use Howard County Design Manual, Volume IV, Standard Specifications and Detail for Construction (Latest Edition). The contractor shall have a copy of Volume IV on the job.
 - Where test pits have been made on existing utilities, they are noted by the symbol at the location of the test pit. A note or notes containing the results of the test pit or pits is included on the drawings. Existing utilities in the vicinity of the proposed work for which test pits have not been dug shall be located by the contractor two weeks in advance of construction operations at his own expense.
 - Contractor shall notify the following utility companies or agencies at least (5) working days before starting work shown on these plans:

State Highway Administration	531-5533
BCE Contractor Services	850-4620
BCE Under Ground Damage Control	787-9068
Miss Utility	1-800-257-7777
Colonial Pipeline Co.	795-1390
Howard County Department of Public Works Bureau of Utilities	313-4900
 - Trees and shrubs are to be protected from damage to maximum extent. Trees and shrubs located within the construction strip are not to be removed or damaged by the contractor.
 - Contractor shall remove trees, stumps and roots along line of excavation. Payment for such removal shall be included in the unit price bid for construction of the main.
 - The contractor shall notify the Bureau of Highways, Howard County, at (410) 313-2450 at least five (5) working days before any open cut of any County road or boring/jacking operation on County roads for laying water/sewer mains or house connections. The approval of these drawings will constitute compliance with DPW requirement per Section 18.114(a) of the Howard County Code.
- PART II - WATER**
- All water mains to be D.I.P. Class 52 unless otherwise noted.
 - Tops of all water mains to have a minimum of 3'-1/2' cover unless otherwise noted.
 - Valves adjacent to tees shall be strapped to tees.
 - All fittings shall be buttressed or anchored with concrete in accordance with the Standard Details unless otherwise provided for on the drawings.
 - Fire hydrants shall be set to the bury line elevations shown on the drawings. All fire hydrants shall be restrained and buttressed with concrete in accordance with the Standard Details. Soil around the fire hydrant shall be compacted in accordance with Section 1000 and 1005 of the Standard Specifications.
 - The contractor shall not operate any water main valves on the existing water system.
 - All water house connections shall be for inside meter setting unless otherwise noted on plans or in specifications.
 - For sprinkler system for all townhomes or multi-family dwelling units should have a minimum of 1' connection with a 3/4" meter.
- PART III - SEWER**
- All sewer mains shall be D.I.P. and P.V.C. unless otherwise noted.
 - All manholes shall be 4' - 0" inside diameter unless otherwise noted.
 - Force mains shall be D.I.P. only.
 - Manholes shown with 12" and 16" walls are for brick manholes only.
 - Manholes designated W.T. in plan and profile shall have watertight frame and covers, Standard Detail C5.52. Where watertight frame and cover is used, set top of frame 1'-6" above finished grade unless otherwise noted on drawings.
 - Household connections with the symbol "C.N.S." indicates that cellar cannot be served.

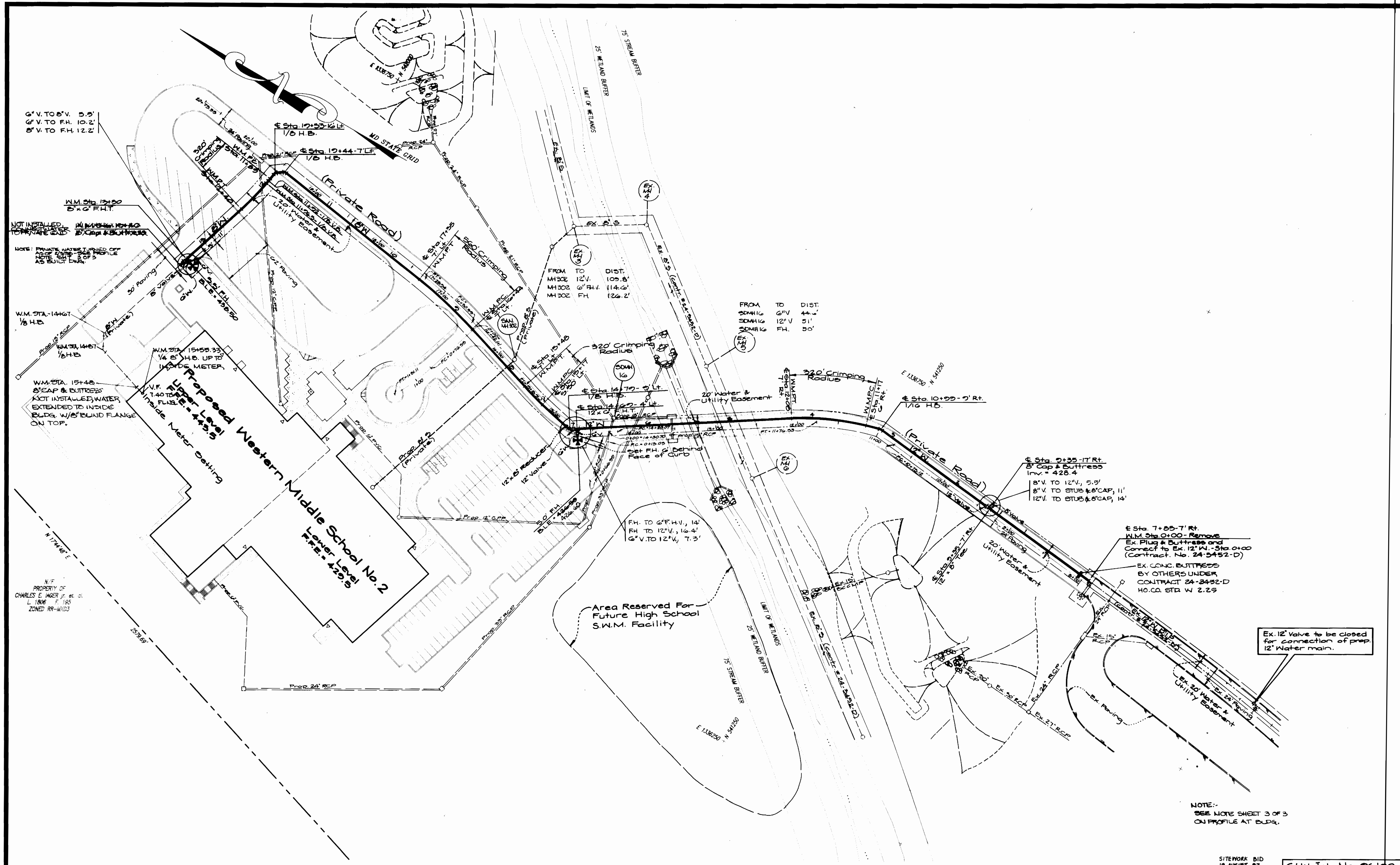
Sediment Control Measures will be implemented in accordance with Section 219 of the Specifications & with Site Development Plan SDP-28-001. Drawings C-7 thru C-11 for Sediment & Erosion Control.

REVIEWED FOR HOWARD SOIL CONSERVATION DISTRICT AND MEETS TECHNICAL REQUIREMENT.
 Chief Surveyor 1/65 9/29/92
 U.S.D.A. NATURAL RESOURCES CONSERVATION SERVICE
 THIS DEVELOPMENT PLAN IS APPROVED FOR SOIL EROSION AND SEDIMENT CONTROL BY THE HOWARD SOIL CONSERVATION DISTRICT.
 APPROVED: 9/29/92

DEPARTMENT OF PUBLIC WORKS HOWARD COUNTY, MARYLAND Michael A. Hunsainville Jr. 9-24-92 CHIEF, BUREAU OF UTILITIES	DEPARTMENT OF PLANNING AND ZONING HOWARD COUNTY, MARYLAND Chief, Development Engineering Division	GLW GUTSCHICK LITTLE & WEBER, P.A. CIVIL ENGINEERS, SURVEYORS, PLANNERS, LANDSCAPE ARCHITECTS 3909 NATIONAL DRIVE - SUITE 250 - BURTONSVILLE OFFICE PARK - BURTONSVILLE, MARYLAND 20866 TEL: (410) 880-1820 ~ FAX: (301) 421-4186	DES: CAH DRN: CAD/CAH CHK: CAG DATE: 8/17/92	GAH BY NO Originals Submitted 9-12-92 REVISION DATE	TITLE SHEET PUBLIC WATER EXTENSION 600' SCALE MAP NO. 11/66 BLOCK NO. 2042/2A3	WESTERN MIDDLE SCHOOL No. 2 CLARKSVILLE ELECTION DISTRICT No. 5 HOWARD COUNTY, MARYLAND CONTRACT No. 44-3633-D	SCALE AS SHOWN SHEET 1 OF 1
--	---	---	---	--	--	---	--------------------------------

SITWORK 810
 19 AUGUST 92

GLW FILE No.
 56100



6" V. TO 6" V. 5.5'
 6" V. TO FH. 10.2'
 8" V. TO FH. 12.2'

NOT INSTALLED
 PRIVATE WATER TAPPED OFF
 AS BUILT DWG.

W.M. STA. 13+50
 8" x 6" F.H.T.

W.M. STA. 14+67
 1/8" H.B.

W.M. STA. 15+45
 8" CAP & BUTTRESS
 NOT INSTALLED, WATER
 EXTENDED TO INSIDE
 BLDG. W/ 8" BLIND FLANGE
 ON TOP.

N.F.
 PROPERTY OF
 CHARLES E. WAGY, JR. ET AL.
 L. 7806 - P. 155
 ZONED RR-40D3

FROM TO DIST.
 MH 302 12" V. 109.8'
 MH 302 6" FH. 114.6'
 MH 302 FH. 126.2'

FROM TO DIST.
 SDMH 16 6" V. 44.0'
 SDMH 16 12" V. 51'
 SDMH 16 FH. 50'

Sta. 9+35 - 17' Rt.
 8" Cap & Buttress
 Inv. = 428.4
 8" V. TO 12" V. 5.3'
 8" V. TO STUB & 8" CAP, 11'
 12" V. TO STUB & 8" CAP, 14'

Sta. 7+55 - 7' Rt.
 W.M. Sta. 0+00 - Remove
 Ex. Plug & Buttress and
 Connect to Ex. 12" W. - Sta. 0+00
 (Contract No. 24-3452-D)
 EX. CONC. BUTTRESS
 BY OTHERS UNDER
 CONTRACT 24-3452-D
 HO. CO. STD. W. 2.25

Ex. 12" Valve to be closed
 for connection of prep.
 12" Water main.

NOTE:-
 SEE NOTE SHEET 3 OF 3
 ON PROFILE AT BUDG.

SITWORK BID
 19 AUGUST 97
 GLW Job No. 96190

DEPARTMENT OF
 PUBLIC WORKS
 HOWARD COUNTY, MARYLAND
 Michael A. Bursainville for 9-24-97
 CHIEF, BUREAU OF UTILITIES RMB DATE

DEPARTMENT OF
 PLANNING AND ZONING
 HOWARD COUNTY, MARYLAND
 [Signature]
 CHIEF, DEVELOPMENT ENGINEERING DIVISION DATE

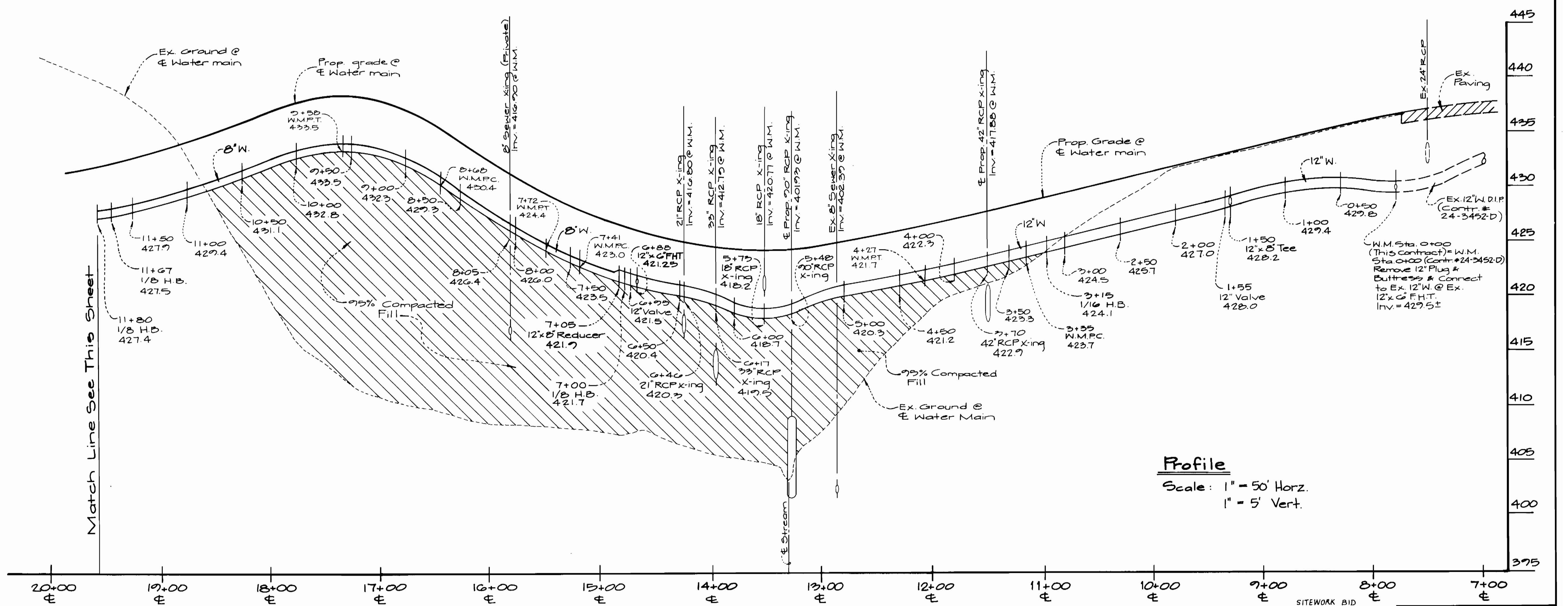
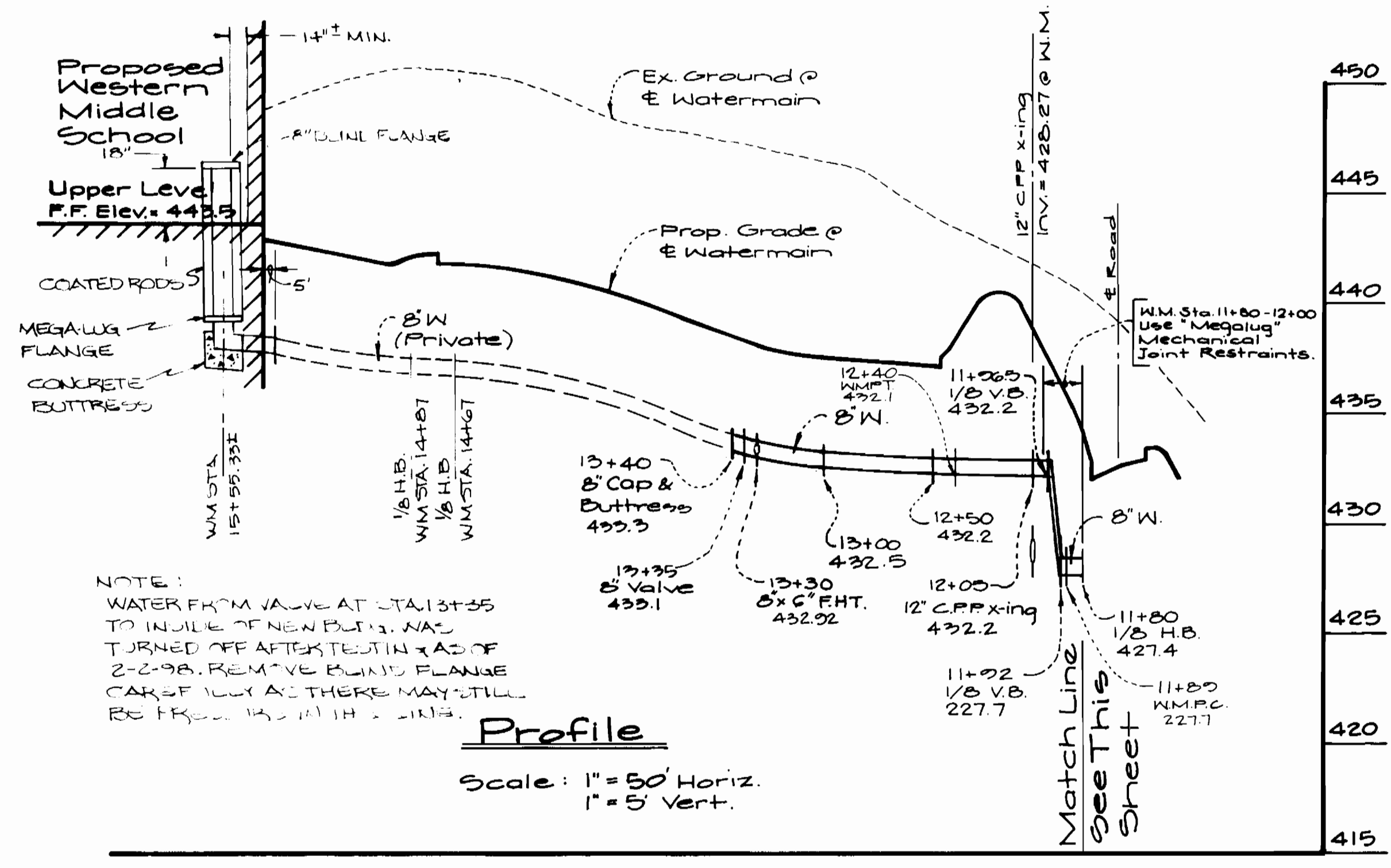
GLW GUTSCHICK LITTLE & WEBER, P.A.
 CIVIL ENGINEERS, SURVEYORS, PLANNERS, LANDSCAPE ARCHITECTS
 3909 NATIONAL DRIVE - SUITE 250 - BURTONSVILLE OFFICE PARK - BURTONSVILLE, MARYLAND 20866
 TEL: (410) 880-1820 ~ FAX: (301) 421-4186



DES:	GAH		
DRN:	CAD/		
CHK:	CKG		
DATE:	JULY 1997		
BY:	GAH	Originals Submitted	5/12/97
NO:		REVISION	DATE

PUBLIC WATER MAIN
 EXTENSION PLAN
 SCALE: 1" = 50'
 600' SCALE MAP NO. 41/96 BLOCK NO. 2042/262

WESTERN MIDDLE SCHOOL No. 2
 CLARKSVILLE ELECTION DISTRICT No. 5
 HOWARD COUNTY, MARYLAND
 CONTRACT No.: 44-3633-D
 SCALE AS SHOWN
 SHEET 2 OF 3



Department of Public Works
Howard County, Maryland

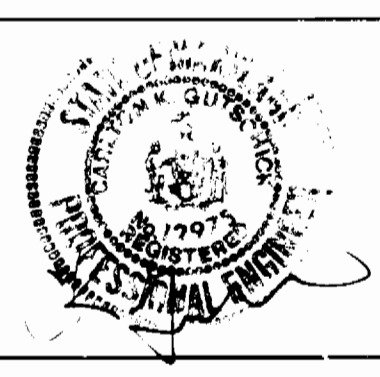
Michael A. Burmann
Chief, Bureau of Utilities

Department of Planning & Zoning
Howard County, Maryland

Mrs. Burmann
Chief Development Engineering Division

GLW GUTSCHICK LITTLE & WEBER, P.A.
ENGINEERS, PLANNERS, SURVEYORS

3909 NATIONAL DRIVE, SUITE 250, BURTONTVILLE OFFICE PARK
BURTONTVILLE, MD 21156
(301) 421-4024



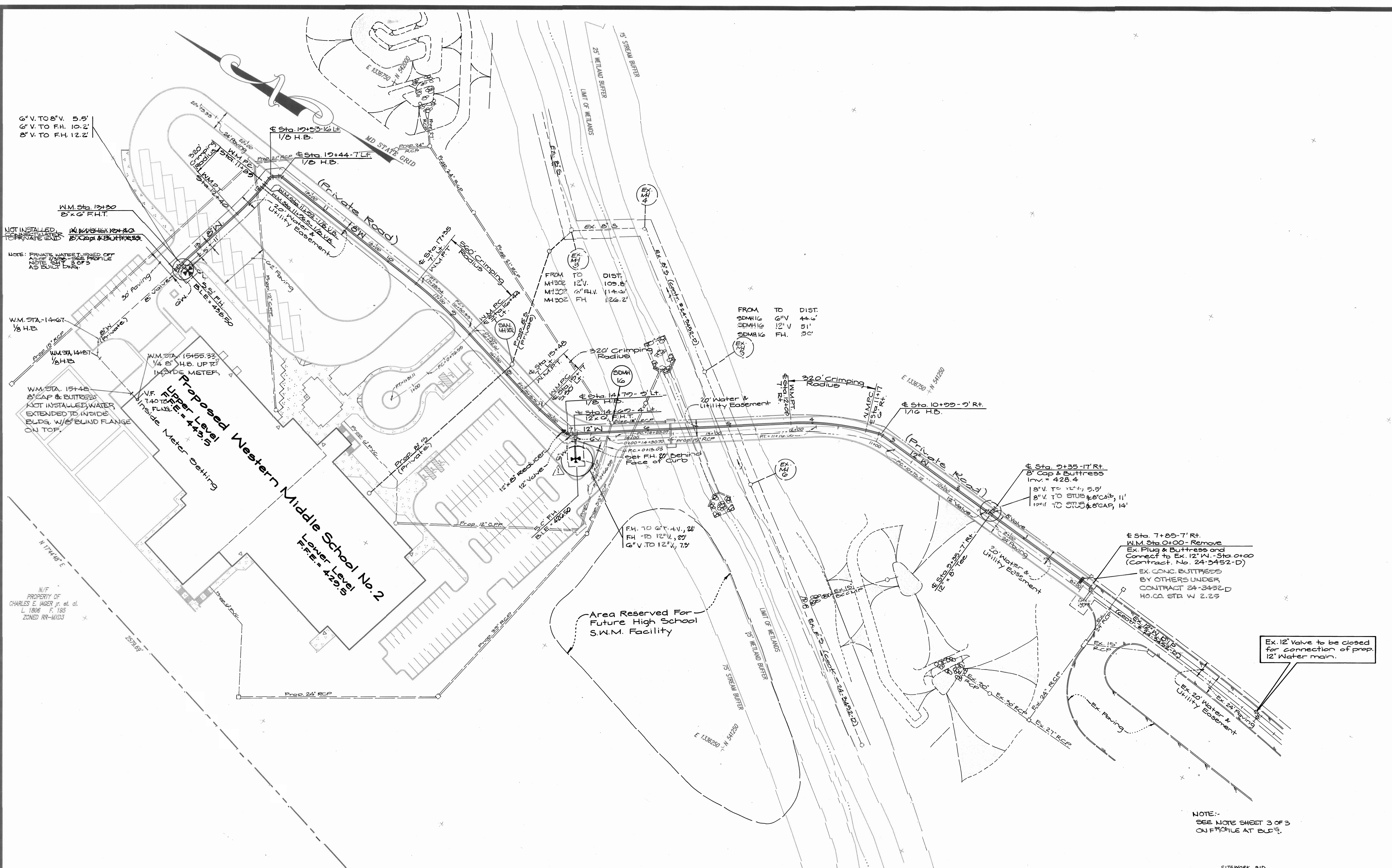
DES: GAH	DATE: July 1997
DRN: ENG/GAH	BY: NO.
CHK: CKG	REVISION
Added Specification for Mechanical Joint Restraints - Originals Submitted	
DATE: 9-12-97	DATE: 600 SCALE MAP NO 41/46 BLOCK NO. 20&21/2&3

Public Waterline Extension Profiles & Details

Western Middle School No. 2
Clarksville Election District No. 5
Howard County, Maryland
Contract No: 44-3633-D

SCALE AS SHOWN
SHEET 3 OF 3

5/2/04



6" V. TO 8" V. 5.5'
 6" V. TO FH. 10.2'
 8" V. TO FH. 12.2'

NOT INSTALLED FOR PRIVATE EASEMENT
 NOTE: PRIVATE WATER MAIN OFF 12" V. TO 8" V. SEE PROFILE NOTE SHEET 3 OF 3 AS BUILT DRAWING

W.M. STA. 13+20
 8" x 6" F.H.T.

W.M. STA. 14+67
 1/8 H.B.

W.M. STA. 14+87
 1/8 H.B.

W.M. STA. 15+48
 8" CAP & BUTTRESS
 NOT INSTALLED, WATER EXTENDED TO INSIDE BLDG. W/ 8" BLIND FLANGE ON TOP.

N/F PROPERTY OF CHARLES E. IAGER, JR. et al. L. 1806 F. 185 ZONED RR-4R03

Area Reserved For Future High School S.W.M. Facility

FROM TO DIST.
 SDMH 16 6" V. 44.6'
 SDMH 16 12" V. 51'
 SDMH 16 FH. 50'

Sta. 2+35-17' Rt.
 8" Cap & Buttress
 Inv. = 428.4
 8" V. TO 12" V. 5.5'
 8" V. TO STUB & CAP, 11'
 12" V. TO STUB & CAP, 14'

Sta. 7+85-7' Rt.
 W.M. Sta. 0+00 - Remove
 Ex. Plug & Buttress and
 Connect to Ex. 12" W. Sta. 0+00
 (Contract No. 24-3452-D)
 EX. CONC. BUTTRESS
 BY OTHERS UNDER
 CONTRACT 24-3452-D
 HO. CO. STR. W. 2.25

Ex. 12" Valve to be closed for connection of prop. 12" Water main.

NOTE: SEE NOTE SHEET 3 OF 3 ON PROFILE AT EXP. 19.

SITWORK BID 19 AUGUST 97

DEPARTMENT OF PUBLIC WORKS
 HOWARD COUNTY, MARYLAND
 Michael A. Surinelle for 9-24-97
 CHIEF, BUREAU OF UTILITIES DATE

DEPARTMENT OF PLANNING AND ZONING
 HOWARD COUNTY, MARYLAND
 [Signature] 10/1/97
 CHIEF, DEVELOPMENT ENGINEERING DIVISION DATE

GLW GUTSCHICK LITTLE & WEBER, P.A.
 CIVIL ENGINEERS, SURVEYORS, PLANNERS, LANDSCAPE ARCHITECTS
 3909 NATIONAL DRIVE - SUITE 250 - BURTONSVILLE OFFICE PARK - BURTONSVILLE, MARYLAND 20866
 TEL: (410) 880-1820 ~ FAX: (301) 421-4186



DES:	GAH			
DRN:	CAD/ GAH			
CHK:	CKG	PGC	REVERSE LOCATION OF F.H. ROAD WIDENING	7/7/05
DATE:	JULY 1997	GAH	Originals Submitted	3-12-97
BY:	NO		REVISION	DATE

PUBLIC WATER MAIN EXTENSION PLAN
 SCALE: 1" = 50'
 600' SCALE MAP NO. 41/46 BLOCK NO. 2022/283

WESTERN MIDDLE SCHOOL No. 2
 CLARKSVILLE ELECTION DISTRICT No. 5
 HOWARD COUNTY, MARYLAND
 CONTRACT No. 44-3633-D
 SCALE AS SHOWN
 SHEET 2 OF 3