

**SITE PLAN**  
SCALE: 1"=10'

- NOTES:**
1. THE CONTRACTOR WILL MAINTAIN ONE (1) LANE OF TRAFFIC AT ALL TIMES. ONE (1) LANE MAINTENANCE OF TRAFFIC WILL BE ALLOWED FROM 9:00 A.M. TO 4:00 P.M. MONDAY THROUGH FRIDAY ONLY.
  2. TWO (2) LANES OF TRAFFIC WILL BE MAINTAINED WEEKENDS AND HOLIDAYS AND FROM 4:00 P.M. TO 9:00 A.M. MONDAY THROUGH FRIDAY.
  3. CONTRACTOR PARKING WILL BE PROHIBITED ALONG MAIN STREET, ROUTE 144, OFF STREET PARKING IS AVAILABLE.

LEGEND	
	BENCH MARK
	DECIDUOUS TREE
	CONIFEROUS TREE
	SHRUB
	GAS METER
	GAS HAND BOX
	GAS VALVE
	FIRE HYDRANT
	WATER VALVE
	WATER METER
	SANITARY MANHOLE
	STORM DRAIN MANHOLE
	UTILITY POLE
	UTILITY POLE & GUY WIRE
	WOOD FENCE
	WIRE FENCE
	CURB LINE
	PROPERTY LINE

**AS-BUILT**

**RECORD DRAWING**  
AUG 11 1998

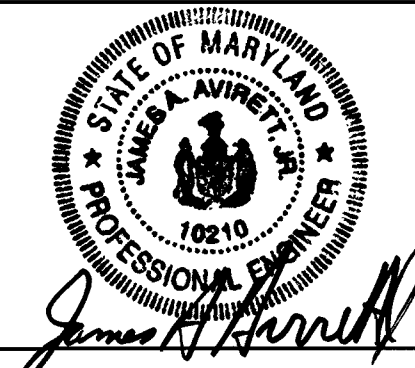
DEPARTMENT OF PUBLIC WORKS  
HOWARD COUNTY, MARYLAND.

*Elizabeth D. Cohen* 9/9/97 DATE  
CHIEF, BUREAU OF ENGINEERING

*Robert W. Sumner* 9-14-97 DATE  
CHIEF, BUREAU OF UTILITIES

*James A. ...* 9-9-97 DATE  
CHIEF, WATER AND SEWER DESIGN

PREPARED BY:  
**WR&A**  
Whitman, Reardon and Associates



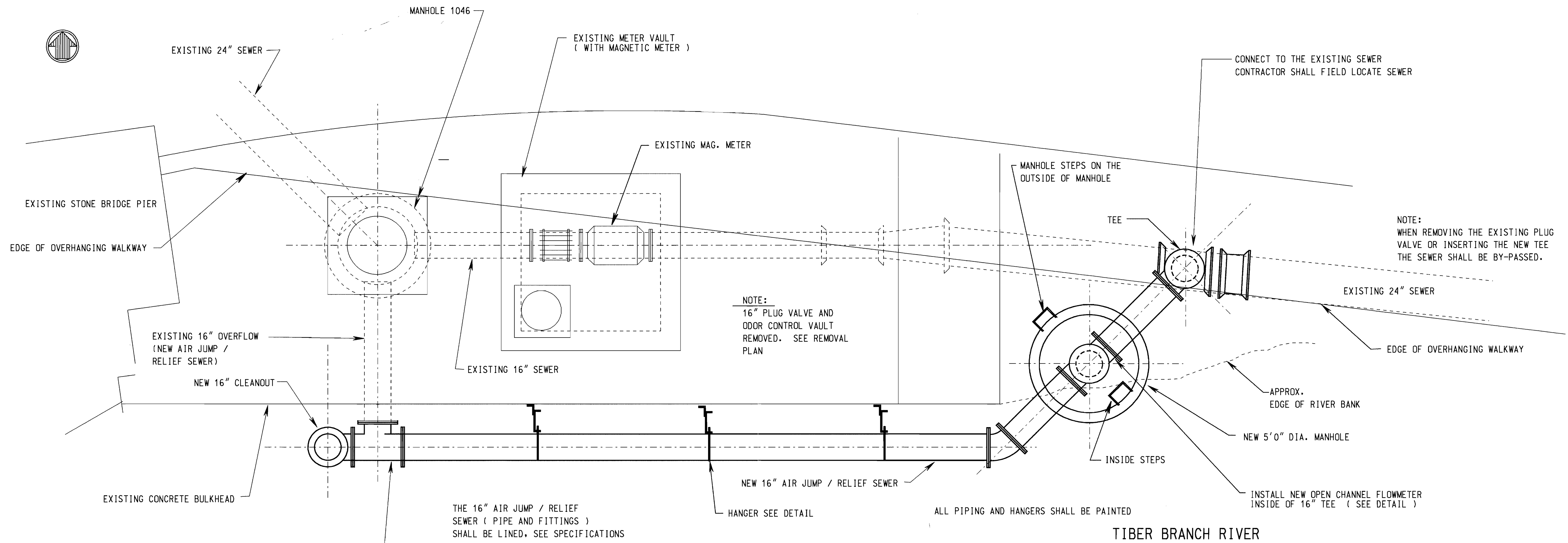
DES :	
DRN :	
CHK :	
DATE :	

BY	NO.	REVISION	DATE

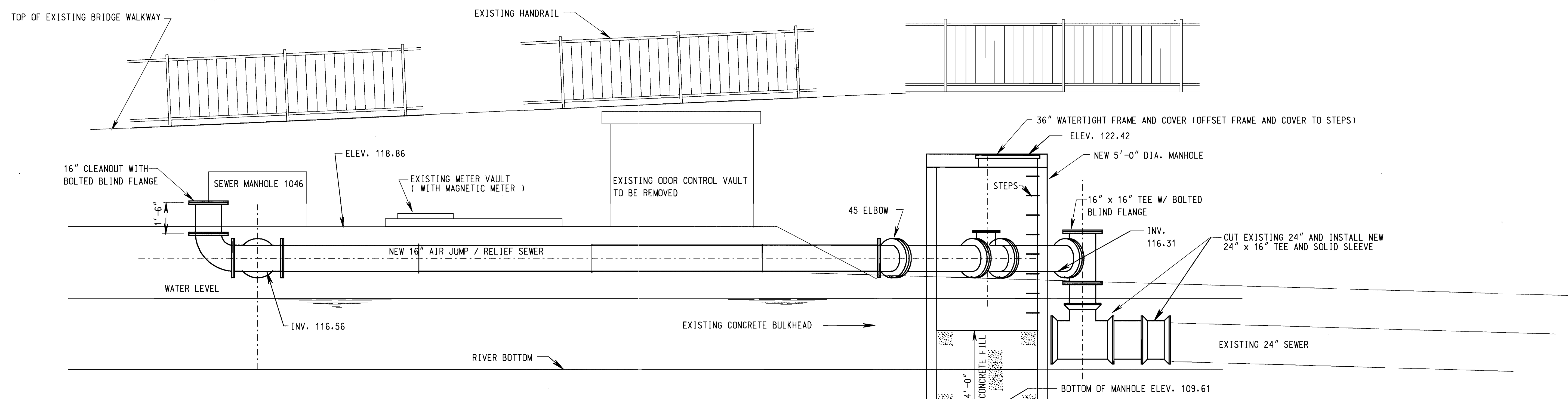
**SITE PLAN**

TIBER BRANCH INTERCEPTOR IMPROVEMENTS  
PARALLEL METERING / AIR JUMP  
CAPITAL PROJECT S-6181  
CONTRACT NUMBER 10 - 3628

SCALE AS SHOWN  
SHEET 2 OF 6



PLAN - METER VAULT  
SCALE: 3/8" = 1'-0"



TYPICAL SECTION  
SCALE: 3/8" = 1'-0"

AS-BUILT

RECORD DRAWING  
AUG 11 1998

DEPARTMENT OF PUBLIC WORKS  
HOWARD COUNTY, MARYLAND.

*Elizabeth A. Calia* 9/9/97  
CHIEF, BUREAU OF ENGINEERING acting DATE

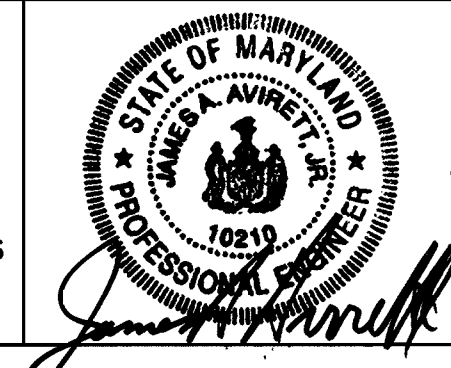
*Robert A. Bauninger* 2-11-97  
CHIEF, BUREAU OF UTILITIES DATE

*John J. ...* 9-9-97  
DIRECTOR OF PUBLIC WORKS DATE

*...*  
CHIEF, WATER AND SEWER DESIGN DATE

PREPARED BY :

**WR&A**  
Whitman, Reardon and Associates



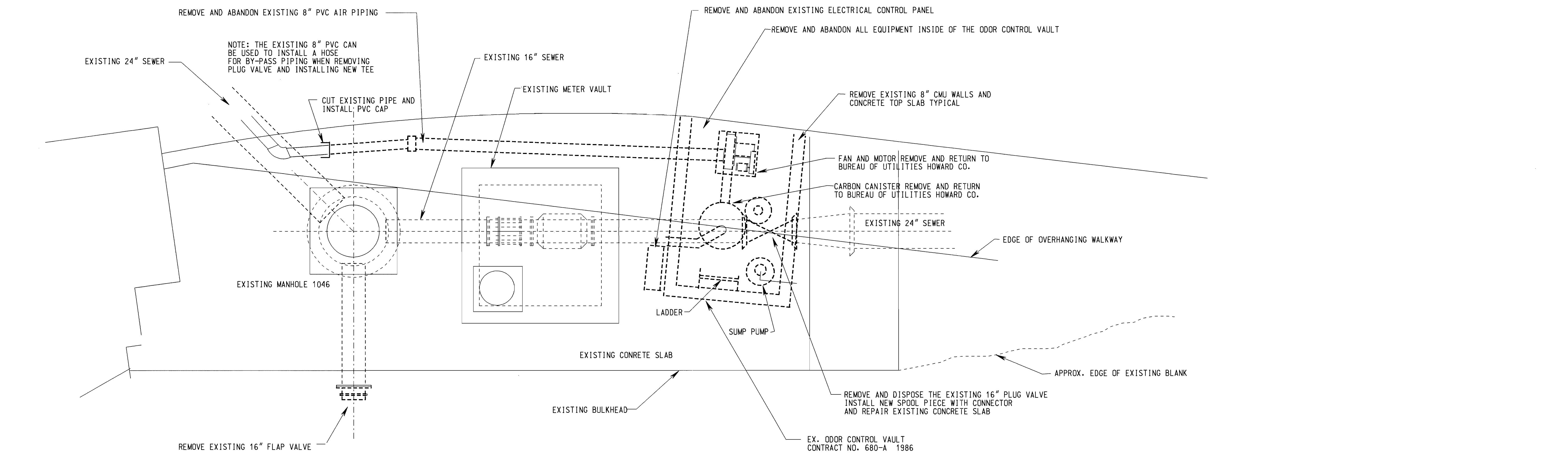
DES :	
DRN :	
CHK :	
DATE :	
BY :	NO.
REVISION	

**PLAN - VAULT**

DATE 600' SCALE MAP NO. BLOCK NO.

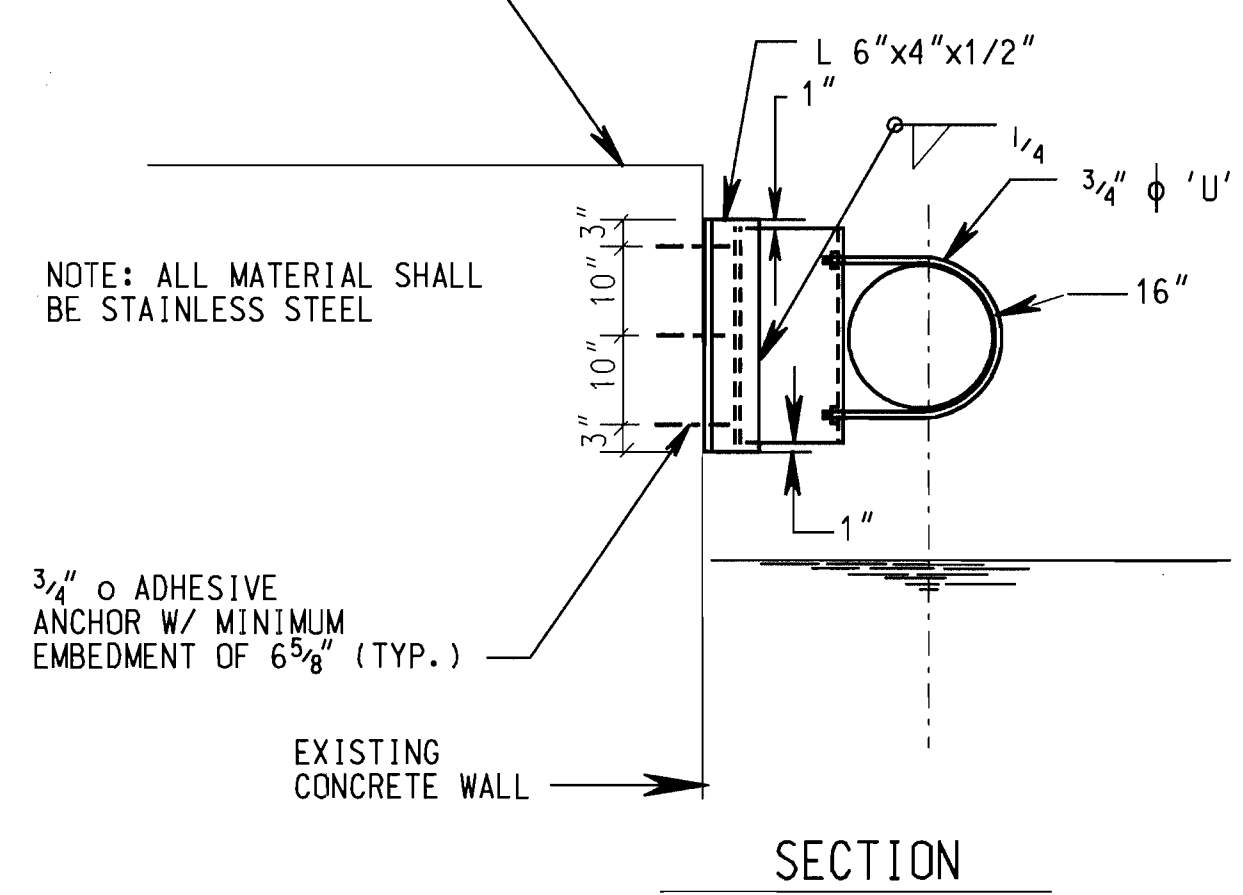
TIBER BRANCH INTERCEPTOR IMPROVEMENTS  
PARALLEL METERING / AIR JUMP  
CAPITAL PROJECT S-6181  
CONTRACT NUMBER 10 - 3628

SCALE AS SHOWN  
SHEET 3 OF 6

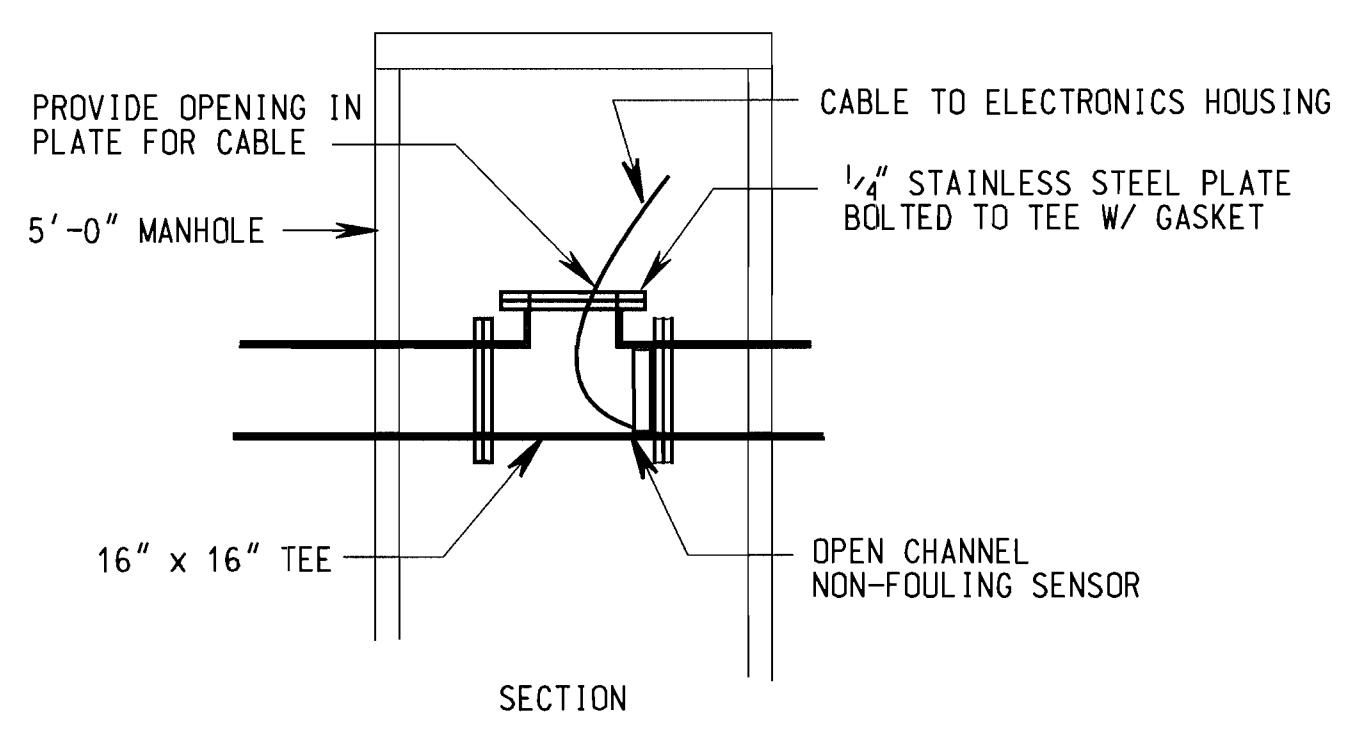


TOP OF CONCRETE SLAB ELEV. 118.86

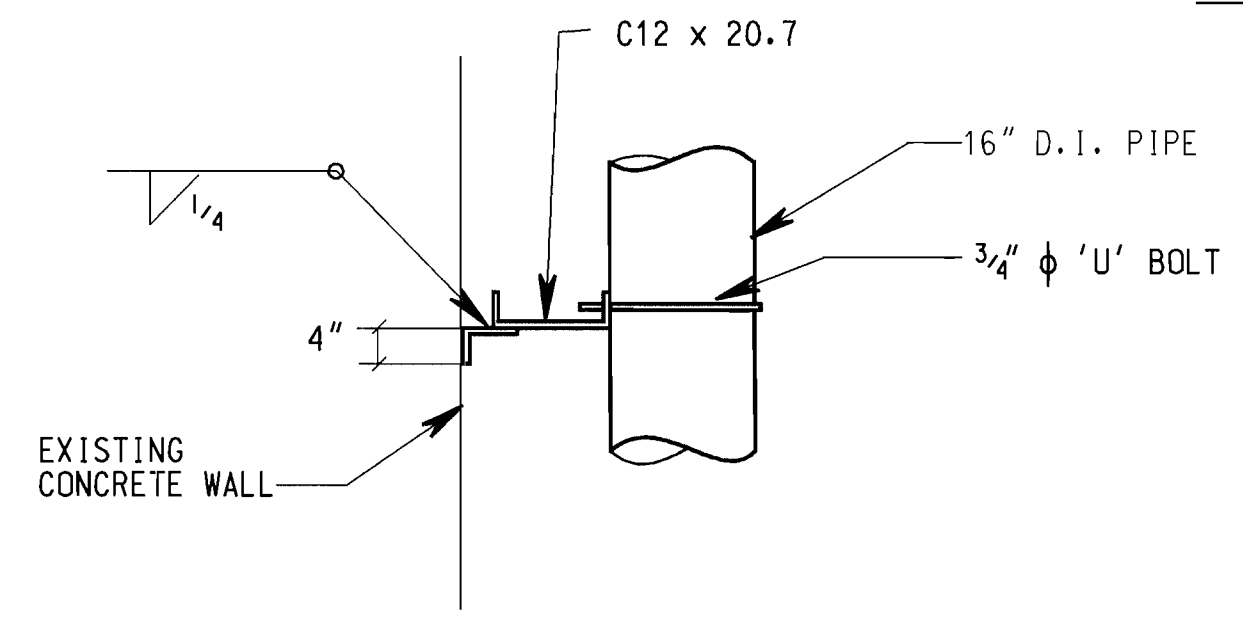
REMOVAL PLAN  
SCALE: 3/8" = 1'-0"



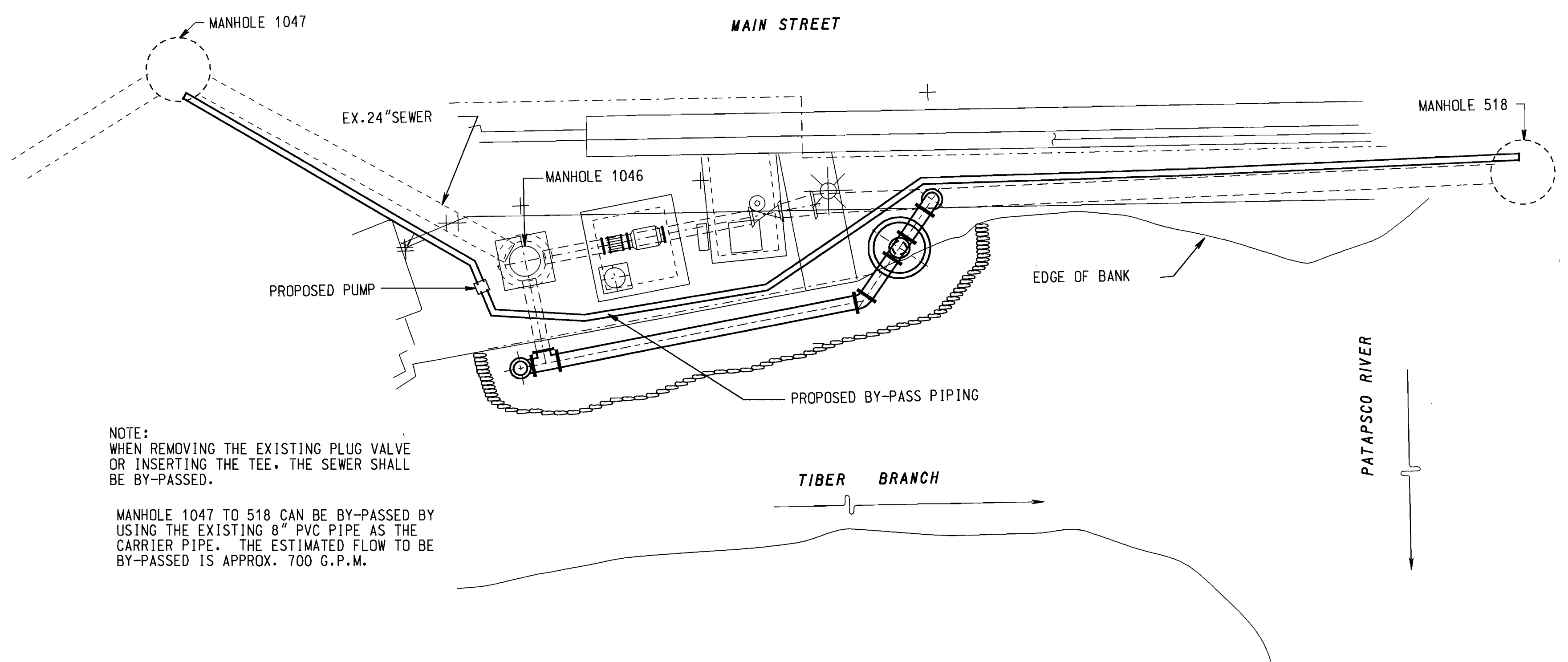
SECTION



OPEN CHANNEL FLOWMETER DETAIL  
SCALE: 3/8" = 1'-0"



HANGER DETAIL  
SCALE: 3/4" = 1'-0"



NOTE:  
WHEN REMOVING THE EXISTING PLUG VALVE OR INSERTING THE TEE, THE SEWER SHALL BE BY-PASSED.  
MANHOLE 1047 TO 518 CAN BE BY-PASSED BY USING THE EXISTING 8" PVC PIPE AS THE CARRIER PIPE. THE ESTIMATED FLOW TO BE BY-PASSED IS APPROX. 700 G.P.M.

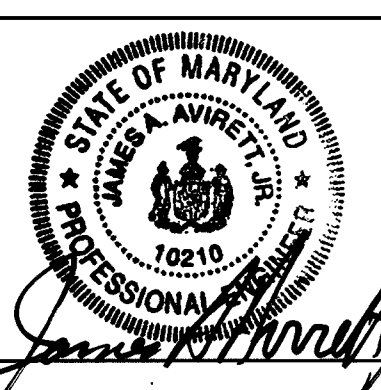
BY-PASS PIPING PLAN  
NO SCALE

AS-BUILT

RECORD DRAWING  
AUG 11 1998

DEPARTMENT OF PUBLIC WORKS  
HOWARD COUNTY, MARYLAND.  
Elizabeth A. Collins 9/9/97  
CHIEF, BUREAU OF ENGINEERING  
DATE  
Robert W. Dunning 9-11-97  
CHIEF, BUREAU OF UTILITIES  
DATE  
James J. ... 9-9-97  
CHIEF, WATER AND SEWER DESIGN  
DATE

PREPARED BY:  
**WR&A**  
Whitman, Reardon and Associates

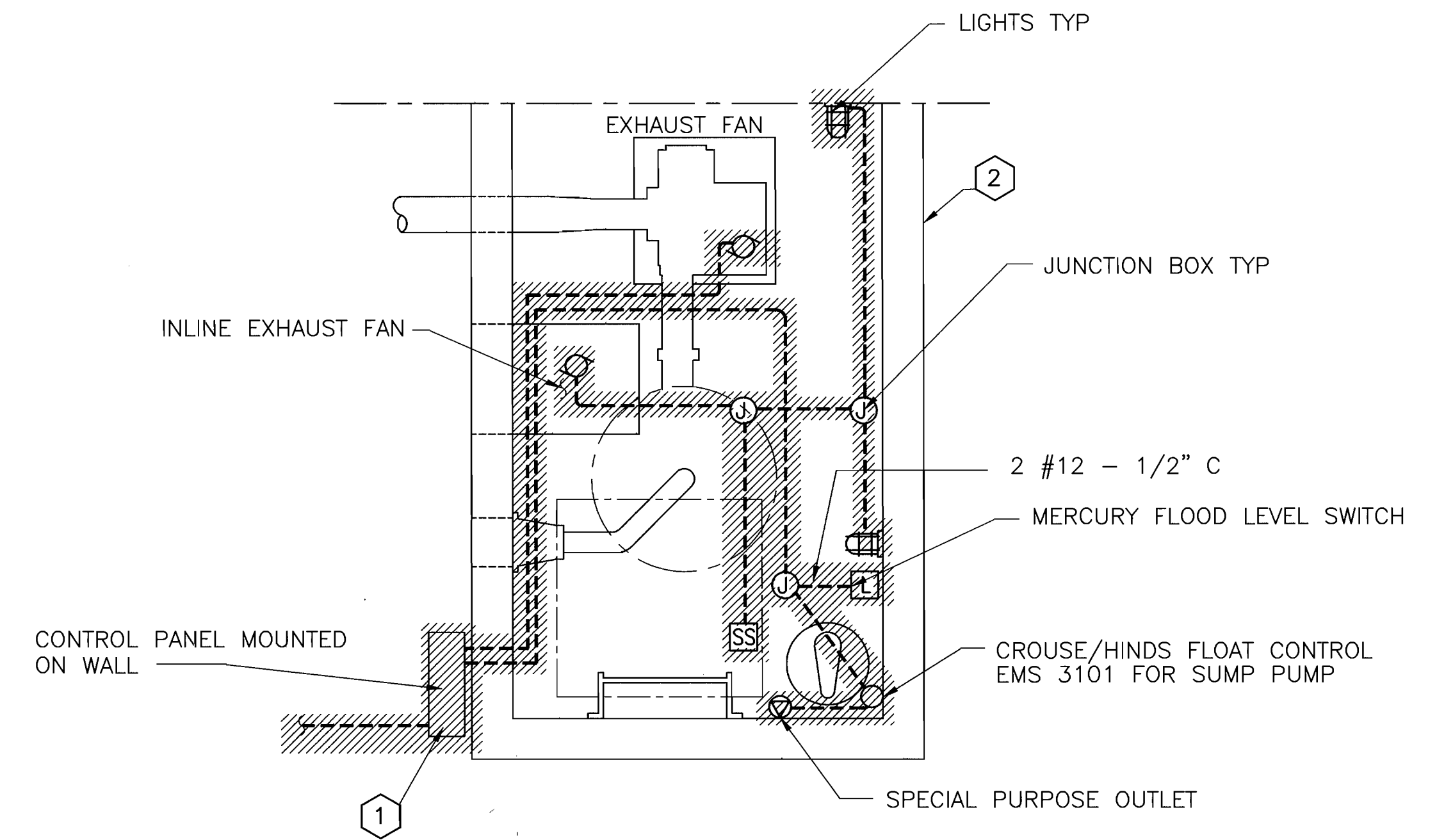
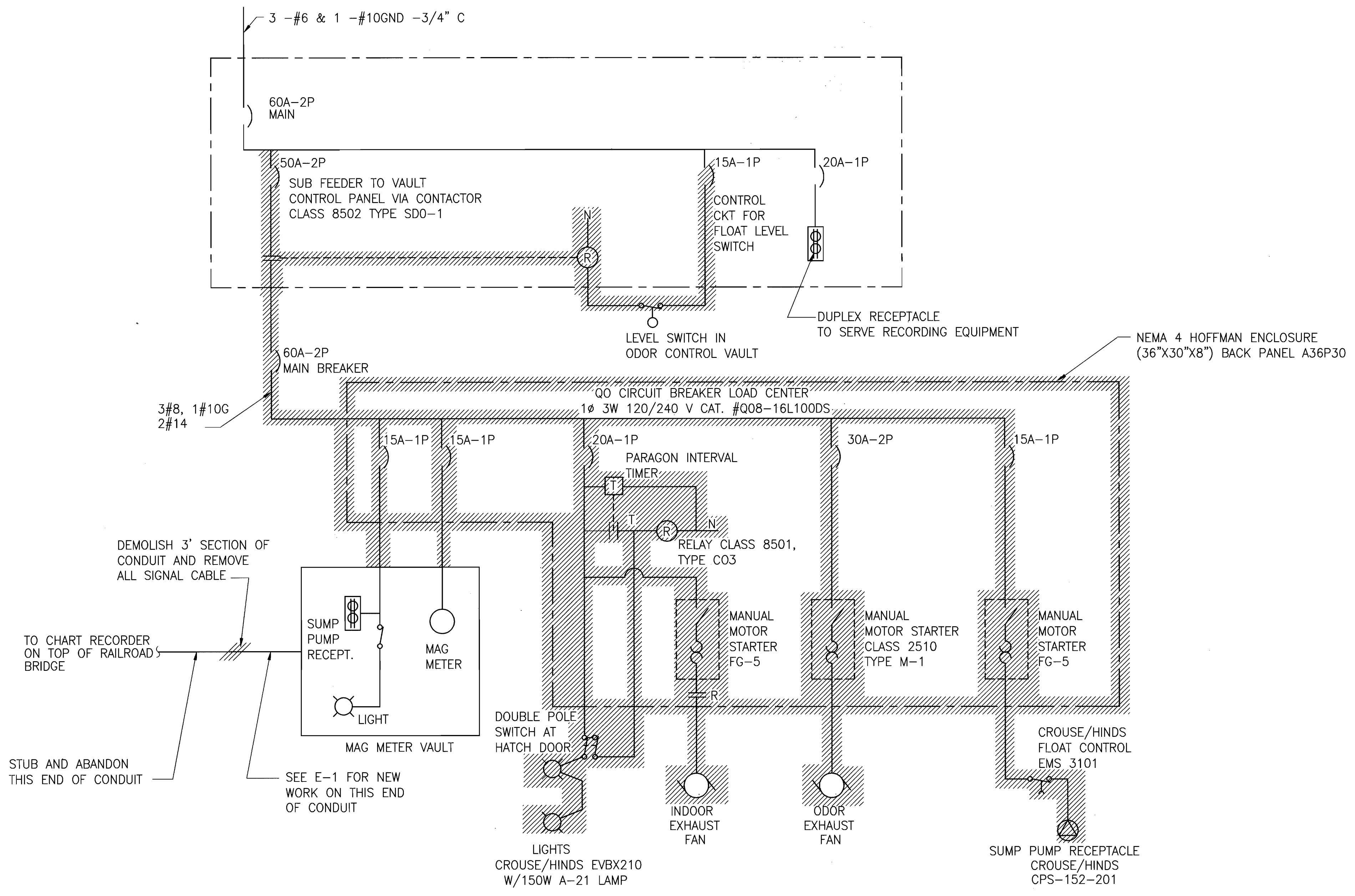


DES :				
DRN :				
CHK :				
DATE :				
BY :	NO.	REVISION	DATE	

**REMOVAL PLAN,  
SECTIONS AND  
DETAILS**

TIBER BRANCH INTERCEPTOR IMPROVEMENTS  
PARALLEL METERING / AIR JUMP  
CAPITAL PROJECT S-6181  
CONTRACT NUMBER 10 - 3628

SCALE AS SHOWN  
SHEET 4 OF 6



**ELECTRICAL DEMOLITION - PATAPSCO RIVER ODOR CONTROL VAULT**  
 SCALE : 1/2" = 1' - 0"

**WIRING DIAGRAM - DEMOLITION**  
**PATAPSCO RIVER ODOR CONTROL VAULT**

**DEMOLITION NOTES:**

- ① REMOVE PANEL AND ASSOCIATED POWER/CONTROL CIRCUITS. RELOCATE PANEL AS PER DWG. E-1 AND RECONNECT POWER/CONTROL CIRCUITS FOR EQUIPMENT NOT LOCATED IN ODOR CONTROL VAULT.
- ② SEE WIRING DIAGRAM DEMOLITION, ON THIS DRAWING, FOR MORE DETAILS.

**LEGEND:**

- CIRCUIT BREAKER MOLDED CASE
- THERMAL OVERLOADS
- MOTOR
- NORMALLY OPEN CONTACT
- NORMALLY CLOSED CONTACT
- JUNCTION BOX
- SAFETY SWITCH
- MERCURY FLOOD LEVEL SWITCH
- RECEPTACLE
- INDICATES EQUIPMENT TO BE REMOVED (DEMOLISHED)

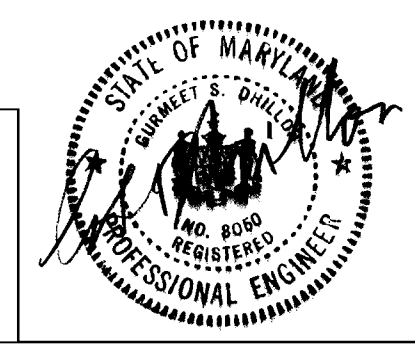
**INDEX OF ELECTRICAL DRAWINGS:**

- DE-1 ELECTRICAL DEMOLITION
- E-1 NEW WORK

**GENERAL NOTES:**

1. ALL NEW CONDUIT, JUNCTION BOXES, STRAPS FITTINGS, ETC. SHALL BE RIGID STEEL CONDUIT WITH AN ULTRAVIOLET (UV) TREATED PVC COATING.
2. ALL NEW AND RELOCATED POWER AND/OR CONTROL PANELS SHALL BE MOUNTED 48" ABOVE GRADE, UNLESS OTHERWISE NOTED.
3. WHERE APPLICABLE PROVIDE 3 (THREE) COPIES OF OPERATION AND MAINTENANCE (O&M) AND/OR OWNER'S MANUALS FOR ALL NEW EQUIPMENT, SHOWING MANUFACTURER'S LITERATURE, PART NUMBERS, SCHEMATICS AND ORIGINAL CONTRACT DRAWINGS.
4. SUBMIT SHOP DRAWINGS FOR ALL PREFABRICATED ENCLOSURES AND SUPPORT STRUCTURES BEFORE MANUFACTURE.
5. PROVIDE 2 (TWO) ANGLES FOR A LOCK OR PROVIDE CLASP MECHANISM FOR INSTALLATION OF HOWARD COUNTY'S LOCKS ON PREFABRICATED ENCLOSURES. THIS WOULD BE IN ADDITION OR IN LIEU OF ANY LOCK ALREADY PROVIDED.

**DHILLON ENGINEERING, INC.**  
 11400 CRONRIDGE DRIVE SUITE D  
 OWINGS MILLS, MD 21117



DEPARTMENT OF PUBLIC WORKS  
 HOWARD COUNTY, MARYLAND.

*Robert A. Calver* 9/9/97  
 CHIEF, BUREAU OF ENGINEERING acting DATE

*Robert A. Calver* 9/9/97  
 CHIEF, BUREAU OF UTILITIES DATE

*Robert A. Calver* 9/9/97  
 CHIEF, WATER AND SEWER DESIGN DATE

PREPARED BY:  
**WR&A**  
 Whitman, Requardt and Associates

DES :					
DRN :					
CHK :					
DATE :					
BY :	NO.	REVISION	DATE	DRAWING No.	BLOCK No.

PREPARED BY  
**ELECTRICAL DEMOLITION**

TIBER BRANCH INTERCEPTOR IMPROVEMENTS  
 PARALLEL METERING / AIR JUMP  
 CAPITAL PROJECT S-6181  
 CONTRACT NUMBER 10 - 3628

**RECORD DRAWING**  
 AUG 11 1998

**AS-BUILT**

SCALE AS SHOWN  
 SHEET 5 of 6

