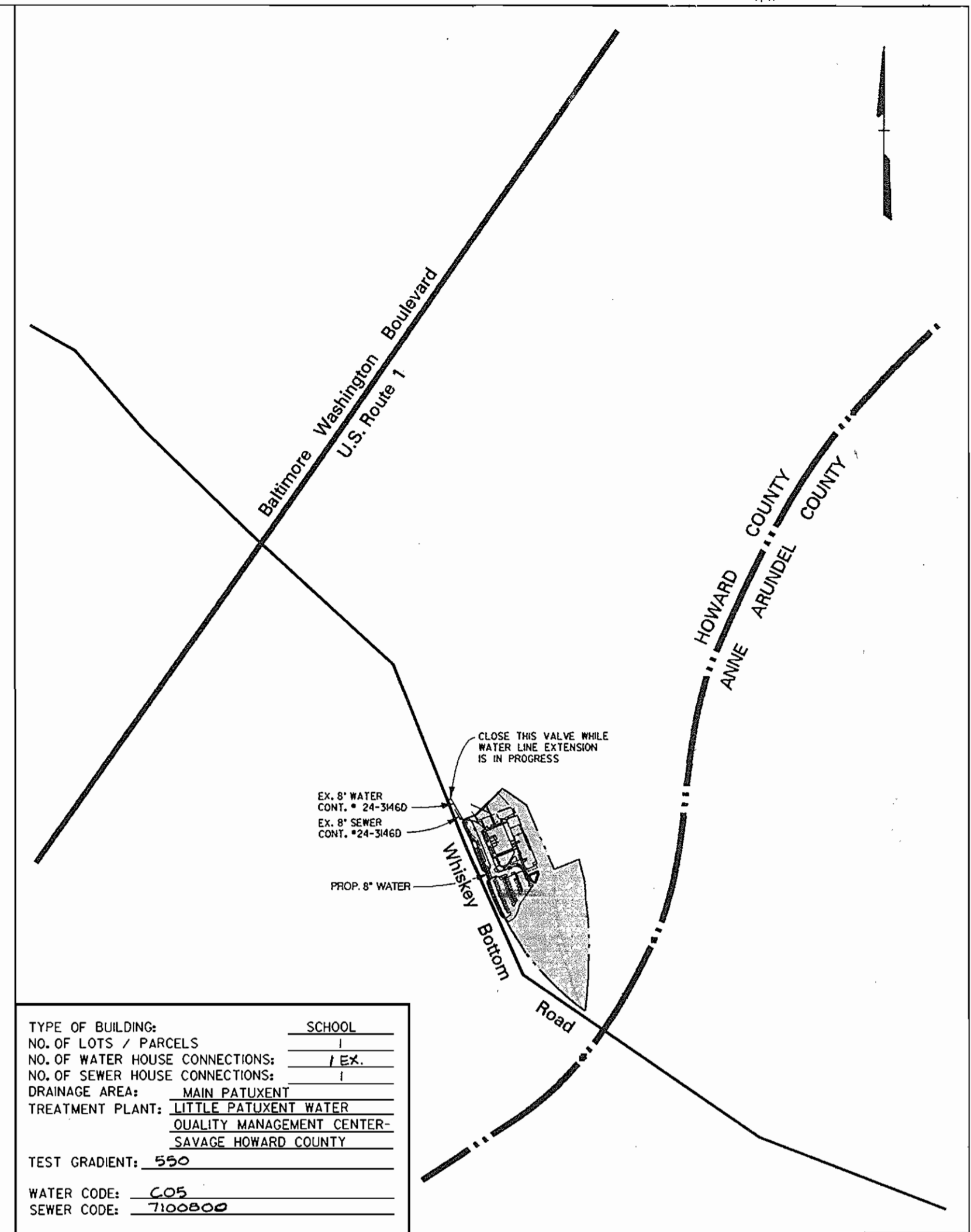


GENERAL NOTES

- PART I**
- APPROXIMATE LOCATION OF EXISTING MAINS ARE SHOWN. THE CONTRACTOR SHALL TAKE ALL NECESSARY PRECAUTIONS TO PROTECT EXISTING MAINS AND SERVICES AND MAINTAIN UNINTERRUPTED SUPPLY. ANY DAMAGE INCURRED SHALL BE REPAIRED IMMEDIATELY TO THE SATISFACTION OF THE ENGINEER AT THE CONTRACTOR'S EXPENSE.
 - ALL HORIZONTAL CONTROLS ARE BASED ON MARYLAND STATE COORDINATES (NORTH AMERICAN DATUM OF 1983/NA83).
 - ALL VERTICAL CONTROLS ARE BASED ON U.S.C.S. DATA.
 - ALL PIPE ELEVATIONS SHOWN ARE INVERT ELEVATIONS.
 - CLEAR ALL UTILITIES BY A MINIMUM OF 6". CLEAR ALL POLES BY 2'-0" MINIMUM OR TUNNEL AS REQUIRED. THE OWNER HAS CONTACTED THE UTILITY COMPANIES AND HAS MADE ARRANGEMENTS FOR BRACING OF POLES AS SHOWN ON THE DRAWINGS. IN THE EVENT THE CONTRACTOR'S WORK REQUIRES THE BRACING OF ADDITIONAL POLES, ANY COST INCURRED BY THE OWNER FOR BRACING OF ADDITIONAL POLES OR DAMAGES SHALL BE DEDUCTED FROM MONEY OWED THE CONTRACTOR. THE CONTRACTOR SHALL COORDINATE WITH THE UTILITY COMPANIES TO SCHEDULE THE BRACING OF THE POLES.
 - FOR DETAILS NOT SHOWN ON THE DRAWINGS AND FOR MATERIALS AND CONSTRUCTION METHODS USE HOWARD COUNTY DESIGN MANUAL, VOLUME IV, STANDARD SPECIFICATIONS AND DETAIL FOR CONSTRUCTION (LATEST EDITION). THE CONTRACTOR SHALL HAVE A COPY OF VOLUME IV ON THE JOB.
 - WHERE TEST PITS HAVE BEEN MADE ON EXISTING UTILITIES, THEY ARE NOTED BY THE SYMBOL AT THE LOCATION OF THE TEST PIT. A NOTE OR NOTES CONTAINING THE RESULTS OF THE TEST PIT OR PITS IS INCLUDED ON THE DRAWINGS. EXISTING UTILITIES IN THE VICINITY OF THE PROPOSED WORK FOR WHICH TEST PITS HAVE NOT BEEN DUG SHALL BE LOCATED BY THE CONTRACTOR TWO WEEKS IN ADVANCE OF CONSTRUCTION OPERATIONS AT HIS OWN EXPENSE.
 - CONTRACTOR SHALL NOTIFY THE FOLLOWING UTILITY COMPANIES OR AGENCIES AT LEAST FIVE (5) WORKING DAYS BEFORE STARTING WORK SHOWN ON THESE PLANS:

STATE HIGHWAY ADMINISTRATION	1-410-531-5533
BOGE CO. CONTRACTOR SERVICES	1-410-850-4620
BOGE CO. UNDER GROUND DAMAGE CONTROL	1-410-781-9668
MSS UTILITY	1-800-291-1777
COLONIAL PIPELINE CO.	1-410-795-1390
HOWARD COUNTY DEPARTMENT OF PUBLIC WORKS	
BUREAU OF UTILITIES	1-410-313-4900
AT&T	1-410-865-3803
CHESAPEAKE & POTOMAC TELEPHONE COMPANY	1-410-597-8585
 - TREES AND SHRUBS ARE TO BE PROTECTED FROM DAMAGE TO MAXIMUM EXTENT. TREES AND SHRUBS LOCATED WITHIN THE CONSTRUCTION STRIP ARE NOT TO BE REMOVED OR DAMAGED BY THE CONTRACTOR.
 - CONTRACTOR SHALL REMOVE TREES, STUMPS, AND ROOTS ALONG LINE OF EXCAVATION. PAYMENT FOR SUCH REMOVAL SHALL BE INCLUDED IN THE UNIT PRICE BID FOR CONSTRUCTION OF THE MAIN.
 - THE CONTRACTOR SHALL NOTIFY THE BUREAU OF HIGHWAYS, HOWARD COUNTY, AT (410) 313-2450 AT LEAST FIVE (5) WORKING DAYS BEFORE ANY OPEN CUT OF ANY COUNTY ROAD OR BORING/JACKING OPERATION IN COUNTY ROADS FOR LAYING WATER/SEWER MAINS OR HOUSE CONNECTIONS. THE APPROVAL OF THESE DRAWINGS WILL CONSTITUTE COMPLIANCE WITH DPW REQUIREMENTS PER SECTION 18.11(A) OF THE HOWARD COUNTY CODE.
- PART II - WATER**
- ALL WATER MAINS TO BE D.I.P. CLASS 52 UNLESS OTHERWISE NOTED.
 - TOPS OF ALL WATER MAINS TO HAVE A MINIMUM OF 3-1/2" COVER UNLESS OTHERWISE NOTED.
 - VALVES ADJACENT TO TEES SHALL BE STRAPPED TO TEES.
 - ALL FITTINGS SHALL BE BUTTRESSED OR ANCHORED WITH CONCRETE IN ACCORDANCE WITH THE STANDARD DETAILS UNLESS OTHERWISE PROVIDED FOR ON THE DRAWINGS.
 - FIRE HYDRANTS SHALL BE SET TO THE BURY LINE ELEVATIONS SHOWN ON THE DRAWINGS. ALL FIRE HYDRANTS SHALL BE RESTRAINED AND BUTTRESSED WITH CONCRETE IN ACCORDANCE WITH STANDARD DETAILS. SOIL AROUND THE FIRE HYDRANT SHALL BE COMPACTED IN ACCORDANCE WITH SECTION 1000 AND 1005 OF THE STANDARD SPECIFICATIONS.
 - THE CONTRACTOR SHALL NOT OPERATE ANY WATER MAIN VALVES ON THE EXISTING WATER SYSTEM.
 - ALL WATER HOUSE CONNECTIONS SHALL BE FOR INSIDE METER SETTING UNLESS OTHERWISE NOTED ON PLANS OR IN SPECIFICATIONS.



VICINITY MAP

SCALE: 1" = 600'

BENCHMARK

DESCRIPTION

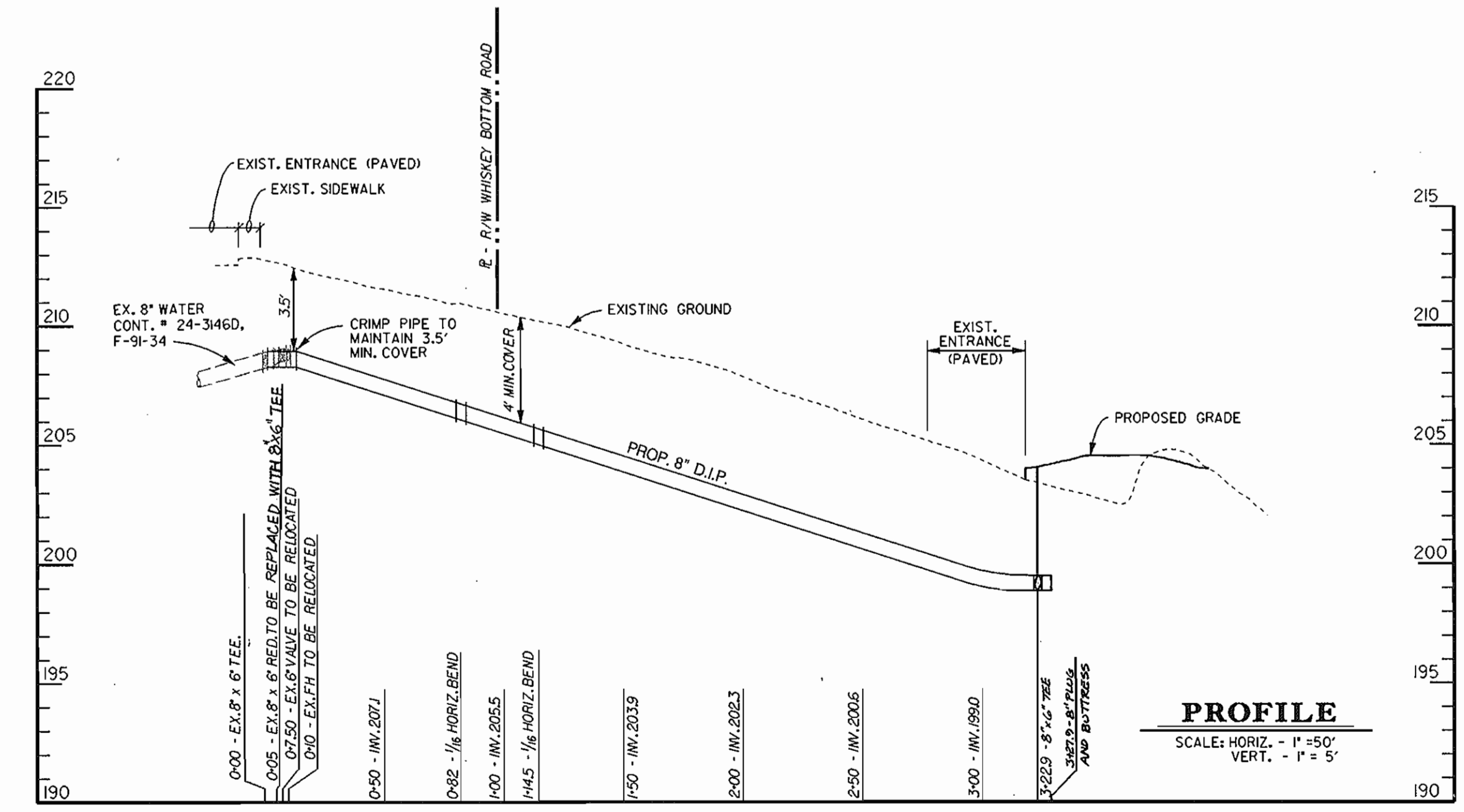
N-163326.2341, E-413336.2634
CONTROL STATION 47E4 (0941004), ELEV. = 338.320 CONCRETE MONUMENT AT NORTH EAST CORNER OF RTE.95 AND GORMAN ROAD.
1' NORTH OF NORTH EDGE OF CONCRETE WALK, 2' EAST OF NORTHEAST CORNER OF BRIDGE, 0.2' BELOW SURFACE

N-164484.3288, E-414949.2600
CONTROL STATION 47C4 (2042004), ELEV. = 288.156 STAMPED CONCRETE MONUMENT AT NORTH EAST CORNER OF VOLLMERHAUSEN ROAD AND SAVAGE-GULFORD ROAD, 2.8' EAST OF CROSS CUT IN TOP OF CURB OF NORTHEAST CORNER OF SAVAGE - GULFORD ROAD, 70.63' SOUTH OF G & E POLE *309354.

CONTRACTOR IS TO TEST PIT AND LOCATE EXISTING 6" HOUSE CONNECTION PRIOR TO CONSTRUCTION.

NOTE: STATIONING ALONG CENTERLINE OF WATER LINE.

PLAN
SCALE: 1" = 50'



PROFILE
SCALE: HORIZ. - 1" = 50'
VERT. - 1" = 5'

QUANTITIES				
ITEMS	QUANTITIES ESTIMATED	AS-BUILT		
		QUANTITIES	TYPE	MANUFACTURER / SUPPLIER
8" DIP	327'	332'	CL52 DIP	GRIFFIN / M&C SALES
6" DIP	10'	8'	CL52 DIP	GRIFFIN / M&C SALES
1/16 BEND	2	2'		GRIFFIN / M&C SALES
6" VALVE	2	1		KENNEDY / M&C SALES
8" PLUG	1	1		GRIFFIN / M&C SALES
6" FH	1	1		KENNEDY / M&C SALES
8" x 6" TEE	2	2		GRIFFIN / M&C SALES

NAME OF UTILITY CONTRACTOR: **RONKIN**
SURVEY AND DRAFTING DIVISION AS-BUILT DATE: **NOV. 25, 1998**

WATER & SEWER AS-BUILTS

REVIEWED FOR HOWARD SOIL CONSERVATION DISTRICT AND MEETS TECHNICAL REQUIREMENT

Clay Simmonds 5/1/97
SIGNATURE DATE

THIS DEVELOPMENT PLAN IS APPROVED FOR SOIL EROSION AND SEDIMENT CONTROL BY THE HOWARD COUNTY CONSERVATION DISTRICT.

APPROVED *John P. Robertson* 5/1/97
HOWARD S.C.D. DATE

SEDIMENT CONTROL MEASURES WILL BE IMPLEMENTED IN ACCORDANCE WITH SECTION 219 OF THE SPECIFICATIONS AND WITH SITE DEVELOPMENT PLAN SDP 97-80.

DEPARTMENT OF PUBLIC WORKS
HOWARD COUNTY, MARYLAND

Robert Benjamin 5-7-97
CHIEF - BUREAU OF UTILITIES - DATE

DEPARTMENT OF PLANNING & ZONING
HOWARD COUNTY, MARYLAND

John P. Robertson 5/1/97
CHIEF - DEVELOPMENT ENGINEERING DIVISION - DATE

DMW
Daft · McCune · Walker, Inc.

A Team of Land Planners, 200 East Pennsylvania Avenue
Landscape Architects, Towson, Maryland 21286
Engineers, Surveyors & Environmental Professionals 410 296 3333
Fax 296 4705



DESIGN BY:	CRW				
DRAWN BY:	MSS				
CHECKED BY:	MK				
DATE:	JAN. 29, 1997	BY	NO.	REVISION	DATE

8" WATER MAIN
PLAN AND PROFILE

600 SCALE MAP NO. 50 BLOCK NO. 5

SCHOOL FOR CONTEMPORARY EDUCATION
HOWARD COUNTY, MARYLAND

CONTRACT NO. 44-3624-D ELECTION DISTRICT: 6th

SCALE AS SHOWN
SHEET 1 OF 1