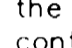


ITEMS	QUANTITIES ESTIMATED	AS-BUILT		MANUFACTURER/SUPPLIER
		QUANTITIES	TYPE	
8" Water	255 L.F.	350 L.F.	D.I.P.	U.S. Pipe/Belmont Supply
6" Water	48 L.F.	48 L.F.	U.I.P.	U.S. Pipe/Belmont Supply
Fire hydrant & valve	1 Ea.	1 Ea.		Weller Co/Belmont Supply
12" x 6" T.S. & V.	1 Ea.	1 Ea.		Weller Co/Belmont Supply
8" x 1/2 HD	3 Ea.	3 Ea.	D.I.P.	U.S. Pipe/Belmont Supply
8" x 1/2 V.B.	1 Ea.	1 Ea.	"	"
8" x 8" Cross	1 Ea.	1 Ea.	"	"
8" Cap & Butress	3 Ea.	3 Ea.	"	"
4" Manhole	1 Ea.	1 Ea.		Atlantic
8" Sewer	17 L.F.	22 L.F.	P.V.C.	J.M. Little, Inc.
8" Stopper	1 Ea.	0		
8" Valve	2 Ea.	2 Ea.		Mason Co. E.P.S.
3" W.H.C.	10 I.P.	0		
4" valve	1 Ea.	1 Ea.		Mason Co. E.P.S.
8" x 1" Tee	1 Ea.	1 Ea.	D.I.P.	U.S. Pipe/Belmont Supply
8" Transition Tee	1 Ea.	1 Ea.	P.V.C.	J.M. Little, Inc.

TYPE OF BUILDING	Commercial
NUMBER OF UNITS	1 Buildings
NUMBER OF S.H.C.'s	1 C.O.S.I.s
NUMBER OF W.H.C.'s	2
DRAINAGE AREA	Middle Patuxent
TREATMENT PLANT	Little Patuxent Water Reclamation Plant

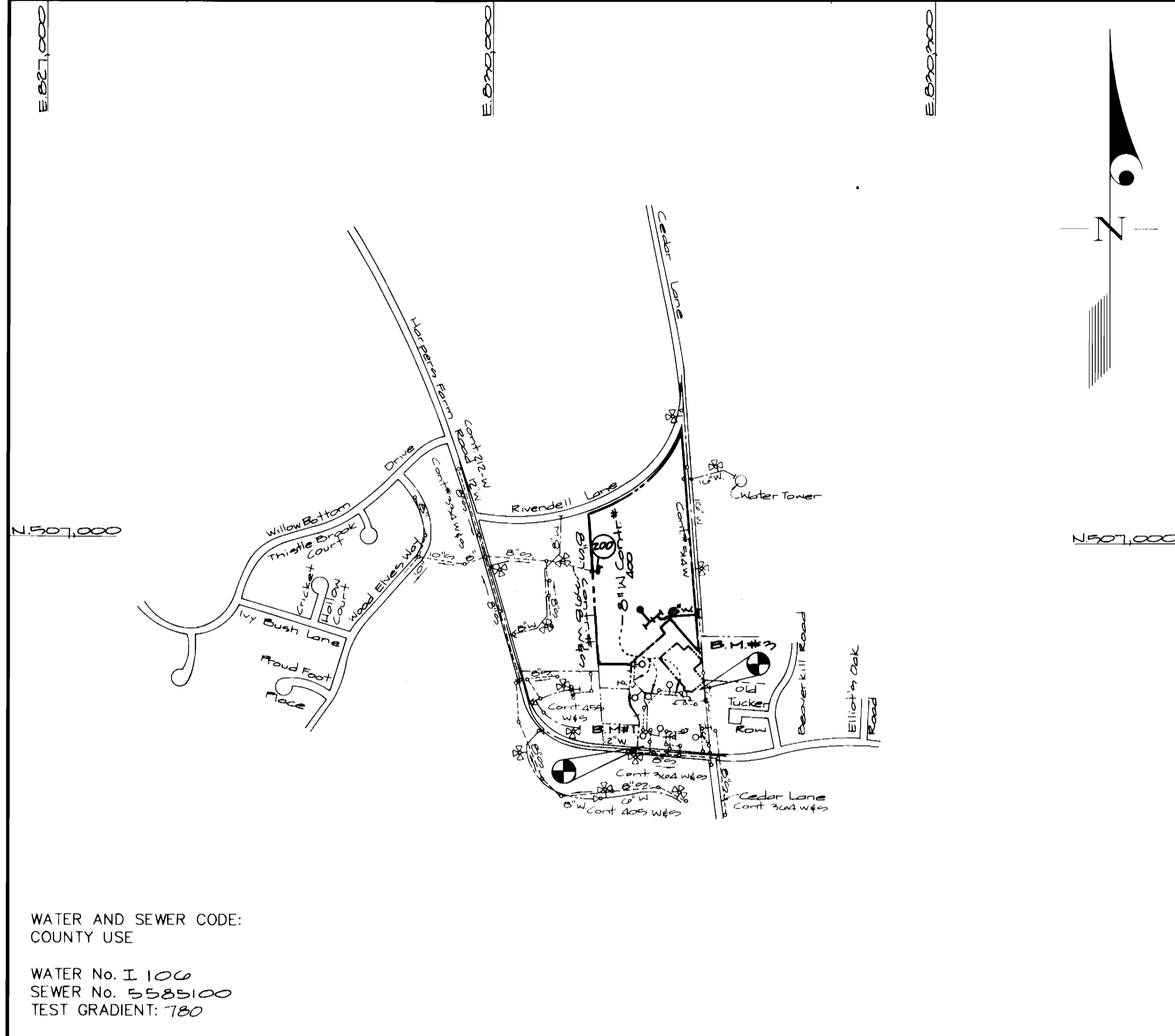
GENERAL NOTES

- PART I**
- Approximate location of existing mains are shown. The contractor shall take all necessary precautions to protect existing mains and services and maintain uninterrupted supply. Any damage incurred shall be repaired immediately to the satisfaction of the Engineer at the Contractor's expense.
 - All horizontal controls are based on Maryland State Coordinates [North American Datum 1927 (NAD '27)].
 - All vertical controls are based on U.S.G.S. data.
 - All pipe elevations shown are invert elevations.
 - Clear all utilities by a minimum of 6". Clear all poles by 2'-0" minimum or tunnel as required. The owner has contacted the utility companies and has made arrangements for bracing of poles as shown on the drawings. In the event the contractor's work requires the bracing of additional poles, any cost incurred by the owner for bracing of additional poles or damages shall be deducted from money owed the contractor. The contractor shall coordinate with the utility companies to schedule the bracing of the poles.
 - For details not shown on the drawings, and for materials and construction methods use Howard County Design Manual, Volume IV, Standard Specifications and Detail for Construction (Latest Edition). The contractor shall have a copy of Volume IV on the job.
 - Where test pits have been made on existing utilities, they are noted by the symbol  at the location of the test pit. A note or notes containing the results of the test pit or pits is included on the drawings. Existing utilities in the vicinity of the proposed work for which test pits have not been dug shall be located by the contractor two weeks in advance of construction operations at his own expense.
 - Contractor shall notify the following utility companies or agencies at least (5) working days before starting work shown on these plans:

State Highway Administration	531-5533
BGE Contractor Services	850-4620
BGE Under Ground Damage Control	787-9068
Miss Utility	1-800-257-7777
Colonial Pipeline Co.	795-1390
Howard County Department of Public Works Bureau of Utilities	313-4900
 - Trees and shrubs are to be protected from damage to maximum extent. Trees and shrubs located within the construction strip are not to be removed or damaged by the contractor.
 - Contractor shall remove trees, stumps and roots along line of excavation. Payment for such removal shall be included in the unit price bid for construction of the main.
 - The contractor shall notify the Bureau of Highways, Howard County, at (410) 313-2450 at least five (5) working days before any open cut of any County road or boring/jacking operation on County roads for laying water/sewer mains or house connections. The approval of these drawings will constitute compliance with DPW requirement per Section 18.114(a) of the Howard County Code.

- PART II - WATER**
- All water mains to be D.I.P. Class 52 unless otherwise noted.
 - Tops of all water mains to have a minimum of 3-1/2' cover unless otherwise noted.
 - Valves adjacent to tees shall be strapped to tees.
 - All fittings shall be buttressed or anchored with concrete in accordance with the Standard Details unless otherwise provided for on the drawings.
 - Fire hydrants shall be set to the bury line elevations shown on the drawings. All fire hydrants shall be restrained and buttressed with concrete in accordance with the Standard Details. Soil around the fire hydrant shall be compacted in accordance with Section 1000 and 1005 of the Standard Specifications.
 - The contractor shall not operate any water main valves on the existing water system.
 - All water house connections shall be for inside meter setting unless otherwise noted on plans or in specifications.
 - For sprinkler system for all townhomes or multi-family dwelling units should have a minimum of 1' connection with a 3/4" meter.

- PART III - SEWER**
- All sewer mains shall be D.I.P. and P.V.C. unless otherwise noted.
 - All manholes shall be 4' - 0" inside diameter unless otherwise noted.
 - Force mains shall be D.I.P. only.
 - Manholes shown with 12" and 16" walls are for brick manholes only. Manholes designated W.T. in plan and profile shall have watertight frame and covers, Standard Detail G5.52. Where watertight frame and cover is used, set top of frame 1'-6" above finished grade unless otherwise noted on drawings.
 - House(s) with the symbol "C.N.S." indicates that cellar cannot be served.



VICINITY MAP
SCALE: 1"=600'

Bench Marks
 B.M.#1 Right Front Cor. Inlet I-6, Elev = 475.20
 B.M.#2 Rim ex. air release MH. Elev = 480.75

WATER AND SEWER CODE:
 COUNTY USE
 WATER No. I 100
 SEWER No. 5585100
 TEST GRADIENT: 1:80

CONTRACT No. 34-3611-D
 Harper's Choice Sports Park
 Section 5 Area 1
 Open Space Lot 1
 HOWARD COUNTY, MARYLAND
 DEPARTMENT OF PUBLIC WORKS

Sediment Control Measures will be implemented in accordance with Section 219 of the Specifications & with Drawings 02-110 02P-07-75 for Sediment & Erosion Control.

REVIEWED FOR HOWARD SOIL CONSERVATION DISTRICT AND MEETS TECHNICAL REQUIREMENT.

U.S.D.A. NATURAL RESOURCES CONSERVATION SERVICE

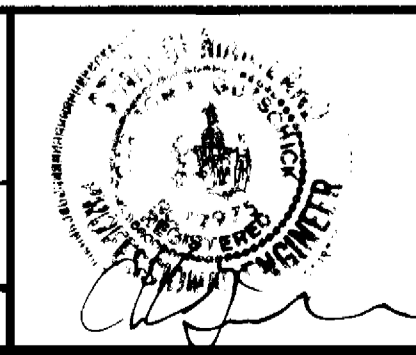
THIS DEVELOPMENT PLAN IS APPROVED FOR SOIL EROSION AND SEDIMENT CONTROL BY THE HOWARD SOIL CONSERVATION DISTRICT.

APPROVED: [Signature]

DEPARTMENT OF PUBLIC WORKS
 HOWARD COUNTY, MARYLAND
 [Signature] 4/20/97
 CHIEF, BUREAU OF UTILITIES

DEPARTMENT OF PLANNING AND ZONING
 HOWARD COUNTY, MARYLAND
 [Signature] 4/16/97
 CHIEF, DEVELOPMENT ENGINEERING DIVISION

GLW GUTSCHICK LITTLE & WEBER, P.A.
 CIVIL ENGINEERS, SURVEYORS, PLANNERS, LANDSCAPE ARCHITECTS
 3909 NATIONAL DRIVE - SUITE 250 - BURTONSVILLE OFFICE PARK - BURTONSVILLE, MARYLAND 20866
 TEL: (410) 880-1820 ~ FAX: (301) 421-4186



DES: WJ			
DRN: GT			
CHK: CKG	GT	2	Rev Quantities & Vicinity Map 1/12/96
	WJ	1	Rev. Elevation with Adjacent Pipe 2/25/97
DATE: Apr 1997	BY	NO	REVISION

Title Sheet
 Scale: 1"=600'
 600' SCALE MAP NO. 29 BLOCK NO. 29

AS-BUILT TO WORK
 Harper's Choice Sports Park
 Section 5 Area 1
 Open Space Lot 1
 5th Elec. District - Howard County, Maryland
 Contract No.: 34-3611-D

GLW FILE No. 96072

SCALE AS SHOWN

SHEET 1 OF 2

