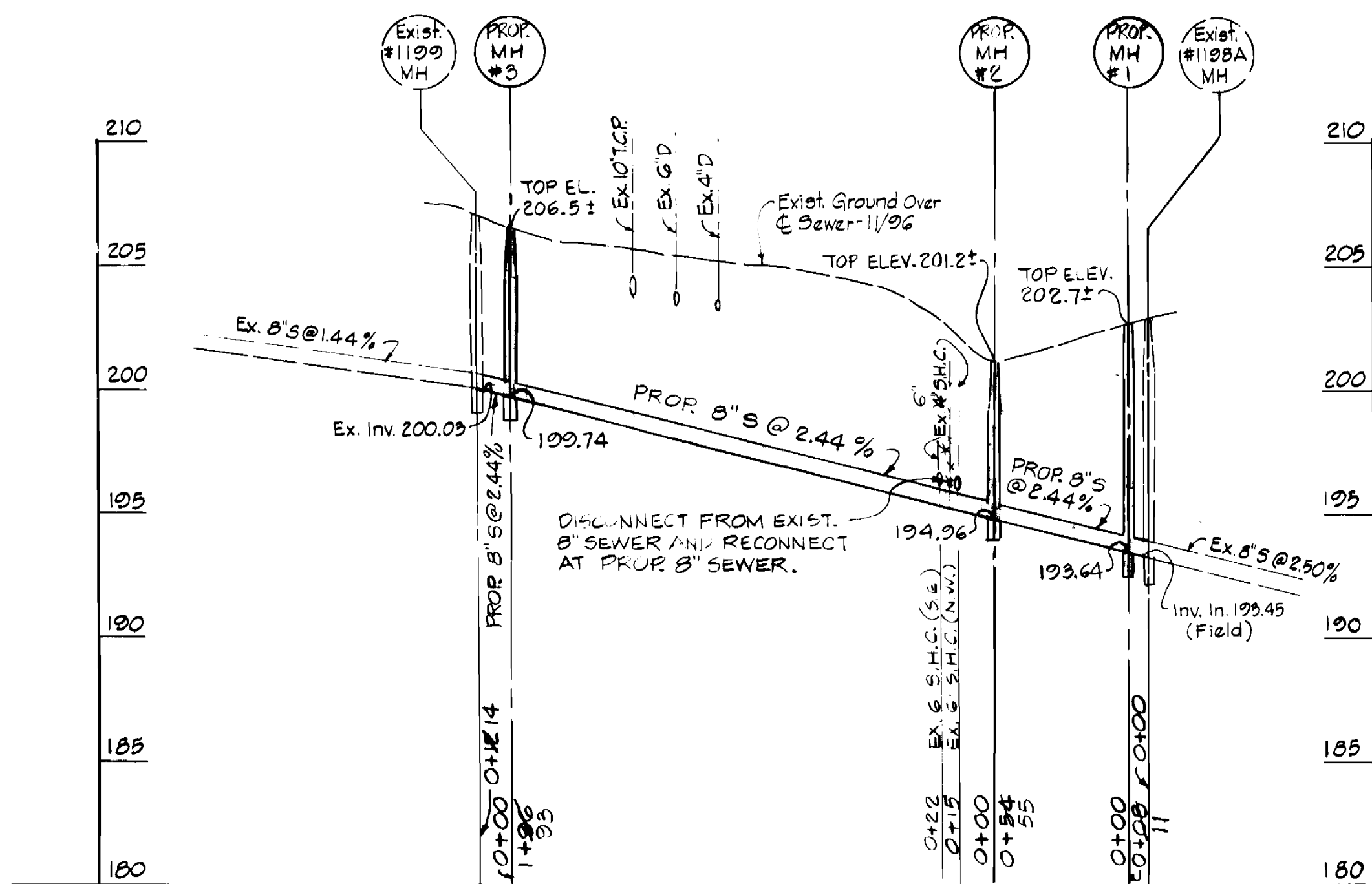
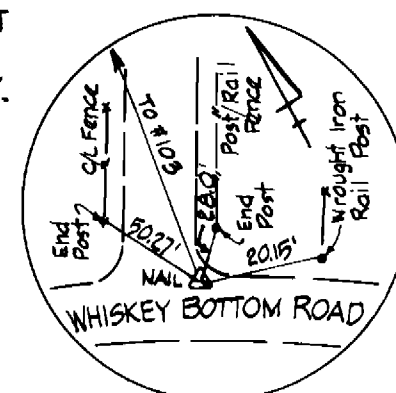


PLAN SCALE: 1"=50'

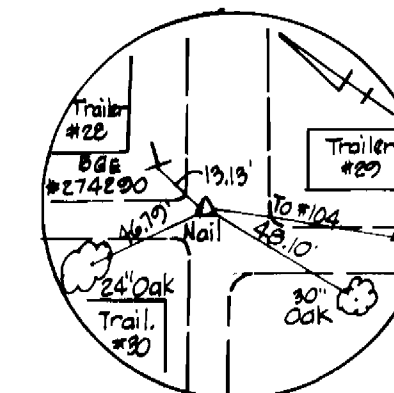


PROFILE SCALE: HOR. 1"=50' VERT. 1"=5'

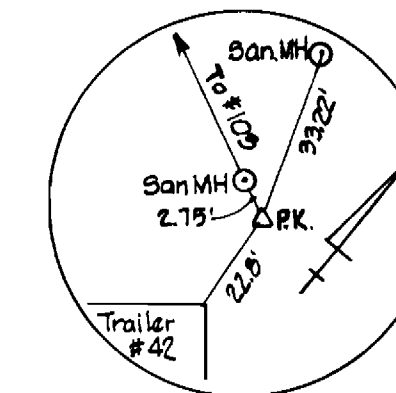
BENCH MARK-HOWARD COUNTY B.M.# 508A
STANDARD DISC ON CONC. MON. EAST SIDE OF
BALTO-WASH. BLVD. 12' FROM FACE OF CURB
(B-W BLVD) AND 40' S.W. OF STONE PLANTER
W/MOTEL SIGN.
N 527261.66
E 1,359,772.98
ELEV. 242.41



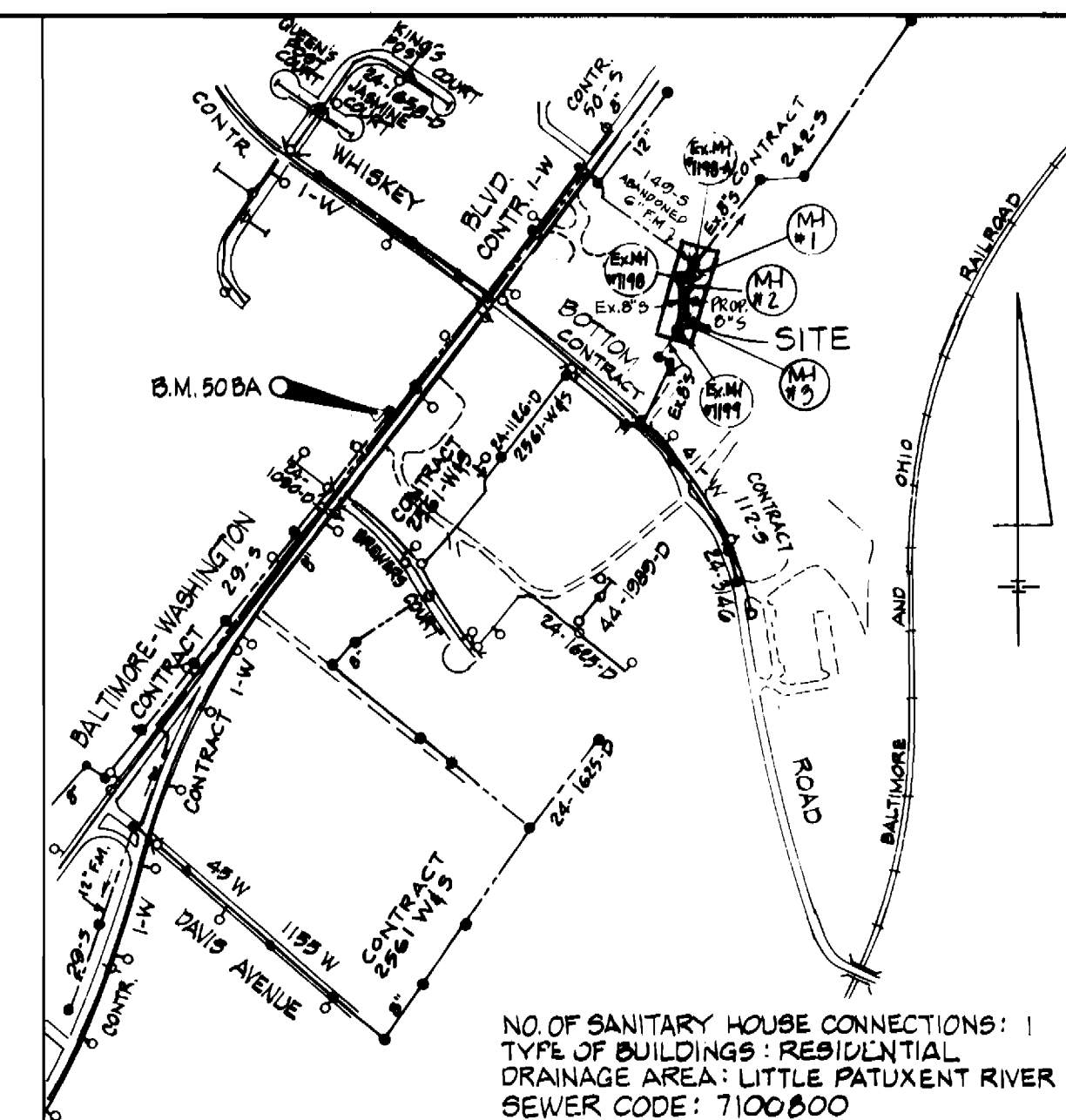
TRAVERSE POINT
H.C.#102
N 527,999.19
E 1,360,713.94
ELEV. 219.55



TRAVERSE POINT
H.C.#103
N 927,704.67
E 1,960,723.37
ELEV. 209.90



TRAVERSE POINT
H.C.#104
N 527,084.90
E 1,360,819.05
ELEV. 206.32



VICINITY MAP SCALE: 1"=600'

ITEMS	QUANTITIES ESTIMATED	AS BUILT	
		QUANTITIES	TYPE MANUFACTURER/SUPPLIER
8" SEWER MAIN	254 L.F.	273	PVC SURF WATER-TITE
4'-0" DIA. MH	3 EA.	3	PRE-CAST WATER-PRO
6" S.H.C.	3 L.F.	20	PVC 24" WATER-PRO

CONTRACTOR: W.F. WILSON & SONS

RESTORATION SCHEDULE

LOCATION	LENGTH	TYPE
8" SANITARY		
EX. MH#1198A TO MH#1	8 L.F.	SEED & MULCH
MH#1 TO MH#2	54 L.F.	SEED & MULCH
MH#2 TO MH#3		
STA. 0+00 TO STA. 0+50	50 L.F.	SEED & MULCH
STA. 0+50 TO STA. 0+85	35 L.F.	PAVING
STA. 0+85 TO STA. 1+06	30 L.F.	SEED & MULCH
STA. 1+06 TO STA. 1+06	31 L.F.	PAVING
MH#3 TO EX. MH#1192		
STA. 0+00 TO STA. 0+12	12 L.F.	PAVING

STAKEOUT DATA

MH #1	N 528,132.45	E 1,360,872.53
MH #2	N 528,088.68	E 1,360,838.88
MH #3	N 527,893.58	E 1,360,819.62

- GENERAL NOTES
- Approximate location of existing mains are shown. The Contractor shall take all necessary precautions to protect existing mains and services and maintain uninterrupted service. Any damage incurred shall be repaired immediately to the satisfaction of the Engineer at the Contractor's expense.
 - All horizontal controls are based on Maryland State Coordinates.
 - All vertical controls are based on U.S.G.S. data.
 - All pipe elevations shown are invert elevations unless otherwise noted on the plans.
 - Clear all utilities by a minimum of 6'. Clear all poles by 5'-0" minimum or tunnel as required. The owner has contacted the utility companies and has made arrangements for bracing of poles as shown on the drawings. In the event the Contractor's work requires the bracing of additional poles, any cost incurred by the owner for the bracing of additional poles or damages shall be deducted from money owed the Contractor. The Contractor shall coordinate with the utility companies to schedule the bracing of the poles.
 - For details not shown on the drawings, and for materials and construction methods, use Howard County Design Manual, Volume IV, Standard Specifications and Details for Construction (Latest Edition). The Contractor shall have a copy of Volume IV on the job.
 - Where test pits have been made on existing utilities, they are noted by the symbol \boxtimes at the location of the test pit. A note or notes containing the results of the test pit or pits is included on the drawings. Existing utilities in the vicinity of the proposed work for which test pits have not been dug shall be located by the Contractor two weeks in advance of construction operations at his own expense.
 - Contractor shall notify the following utility companies or agencies at least five working days before starting work shown on these plans:
 - AT&T 865-3803
 - BGE - Contractor Services 850-4620
 - BGE - Underground Damage Control 787-9068
 - Bureau of Utilities (DPW) 313-4900
 - Bell Atlantic - MD, Inc. 597-8585
 - Colonial Pipeline Co. 795-1990
 - Miss Utility 1-800-257-7777
 - State Highway Administration 531-5533
 - Trees and shrubs are to be protected from damage to the maximum extent. Trees and shrubs located within the construction strip are not to be removed or damaged by the Contractor.
 - Contractor shall remove trees, stumps and roots along line of excavation. Payment for such removal shall be included in the unit price bid for construction of the main.
 - The Contractor shall notify the Bureau of Highways, Howard County, at (410) 313-2450 at least five working days before any open cut of any County road or trenchless installation operation in county roads for laying water/sewer mains or house connections. The approval of these drawings will constitute compliance with DPW requirements per Section 18114(a) of the Howard County Code.

SEWER NOTES

- All sewer mains shall be D.I.P. or P.V.C. unless otherwise noted.
- All manholes shall be 4'-0" inside diameter unless otherwise noted.
- Force mains shall be 4'-0" inside diameter unless otherwise noted.
- Manholes shown with 12" and 16" walls are for brick manholes only.
- Manholes designated W.T. in plan and profile shall have watertight frame and cover, Standard Detail G5.52. Where watertight manhole frames and covers are used, set top of frame 1'-6" above finished grade unless otherwise noted on the drawings.
- House(s) with the symbol 'C.N.S.' indicates cellar cannot be served.

THIS DEVELOPMENT PLAN IS APPROVED FOR THE SOIL EROSION AND SEDIMENT CONTROL BY THE HOWARD COUNTY SOIL CONSERVATION DISTRICT.

John R. Deaton 12/9/96
APPROVED, HOWARD COUNTY S.C.D. DATE

REVIEWED FOR HOWARD COUNTY S.C.D. AND MEETS TECHNICAL REQUIREMENTS.
Cheryl K. 12/19/96
U.S. NATURAL RESOURCES CONSERVATION SERVICE DATE

DEVELOPER'S CERTIFICATION:
"I/WE CERTIFY THAT ALL DEVELOPMENT AND CONSTRUCTION WILL BE DONE ACCORDING TO THIS PLAN AND THAT ANY RESPONSIBLE PERSONNEL INVOLVED IN THE CONSTRUCTION PROJECT WILL HAVE A CERTIFICATION OF ATTENDANCE AT A MARYLAND DEPARTMENT OF ENVIRONMENT APPROVED TRAINING PROGRAM FOR THE CONTROL OF SEDIMENT AND EROSION BEFORE BEGINNING THE PROJECT."

Paul D. Symon 12/2/96
BUREAU OF ENGINEERING DEPARTMENT OF PUBLIC WORKS. DATE

ENGINEER'S CERTIFICATION:
"I CERTIFY THAT THIS PLAN FOR EROSION AND SEDIMENT CONTROL REPRESENTS A PRACTICAL AND WORKABLE PLAN BASED ON MY PERSONAL KNOWLEDGE OF THE SITE CONDITIONS AND THAT IT WAS PREPARED IN ACCORDANCE WITH THE REQUIREMENTS OF THE HOWARD COUNTY SOIL CONSERVATION DISTRICT."

Mark S. Hicks P.E. 11/14/96
DATE

HICKS ENGINEERING COMPANY, INC.
ENGINEERS, SURVEYORS & PLANNERS
200 EAST JOPPA ROAD, SUITE 402
TOWSON, MARYLAND 21286-3160
(410) 494-0001

DEPARTMENT OF PUBLIC WORKS
HOWARD COUNTY, MARYLAND

James P. Sullivan 12/6/96
DIRECTOR OF PUBLIC WORKS DATE

Paul D. Symon 12/2/96
CHIEF, BUREAU OF ENGINEERING DATE

Robert J. Zimmerman 12-3-96
CHIEF, BUREAU OF UTILITIES DATE

Paul D. Symon 11-27-96
CHIEF, WATER & SEWER DESIGN DIV. DATE

HICKS ENGINEERING CO., INC.
ENGINEERS, SURVEYORS & PLANNERS
200 EAST JOPPA ROAD, SUITE 402
TOWSON, MARYLAND 21286-3160
(410) 494-0001

DES: F.W.
DRN: F.W.
CHK: D.E.H.
DATE: 11/96
BY: NO. REVISION

PLAN AND PROFILE
8" SANITARY SEWER MAIN

600' SCALE MAP NO. 3507W-30 BLOCK NO. 373

WHISKEY BOTTOM ROAD OUTFALL SEWER MAIN
6TH ELECTION DISTRICT
HOWARD COUNTY, MARYLAND
CAPITAL PROJECT S-6207
CONTRACT NO. 20-3582

SCALE AS SHOWN
SHEET 1 OF 2

