

**GENERAL NOTES**

**PART I - GENERAL**

1. Approximate location of existing mains are shown. The contractor shall take all necessary precautions to protect existing mains and services and maintain uninterrupted supply. Any damage incurred shall be repaired immediately to the satisfaction of the Engineer at the Contractor's expense.
2. All horizontal controls are based on Maryland State Coordinates. [North American Datum of 1983 (NAD '83)].
3. All vertical controls are based on U.S.G.S. data.
4. All pipe elevations shown are invert elevations.
5. Clear all utilities by a minimum of 6". Clear all poles by 2'-0" minimum or tunnel as required. The owner has contacted the utility companies and has made arrangements for bracing of poles as shown on the drawings. In the event that the contractor's work requires the bracing of additional poles, any cost incurred by the owner for bracing of additional poles or damages shall be deducted from money owed the contractor. The contractor shall coordinate with the utility companies to schedule the bracing of the poles.
6. For details not shown on the drawings, and for materials and construction methods, use Howard County Design Manual, Volume IV, Standard Specifications and Details for Construction (Latest Edition). The contractor shall have a copy of Volume IV on the job.
7. Where test pits have been made on existing utilities, they are noted by the symbol at the location of the test pit. A note or notes containing the results of the test pit or pits is included on the drawings. Existing utilities in the vicinity of the proposed work for which test pits have not been dug shall be located by the contractor two weeks in advance of construction operations at his own expense.
8. Contractor shall notify the following utility companies or agencies at least five working days before starting work shown on these plans:
 

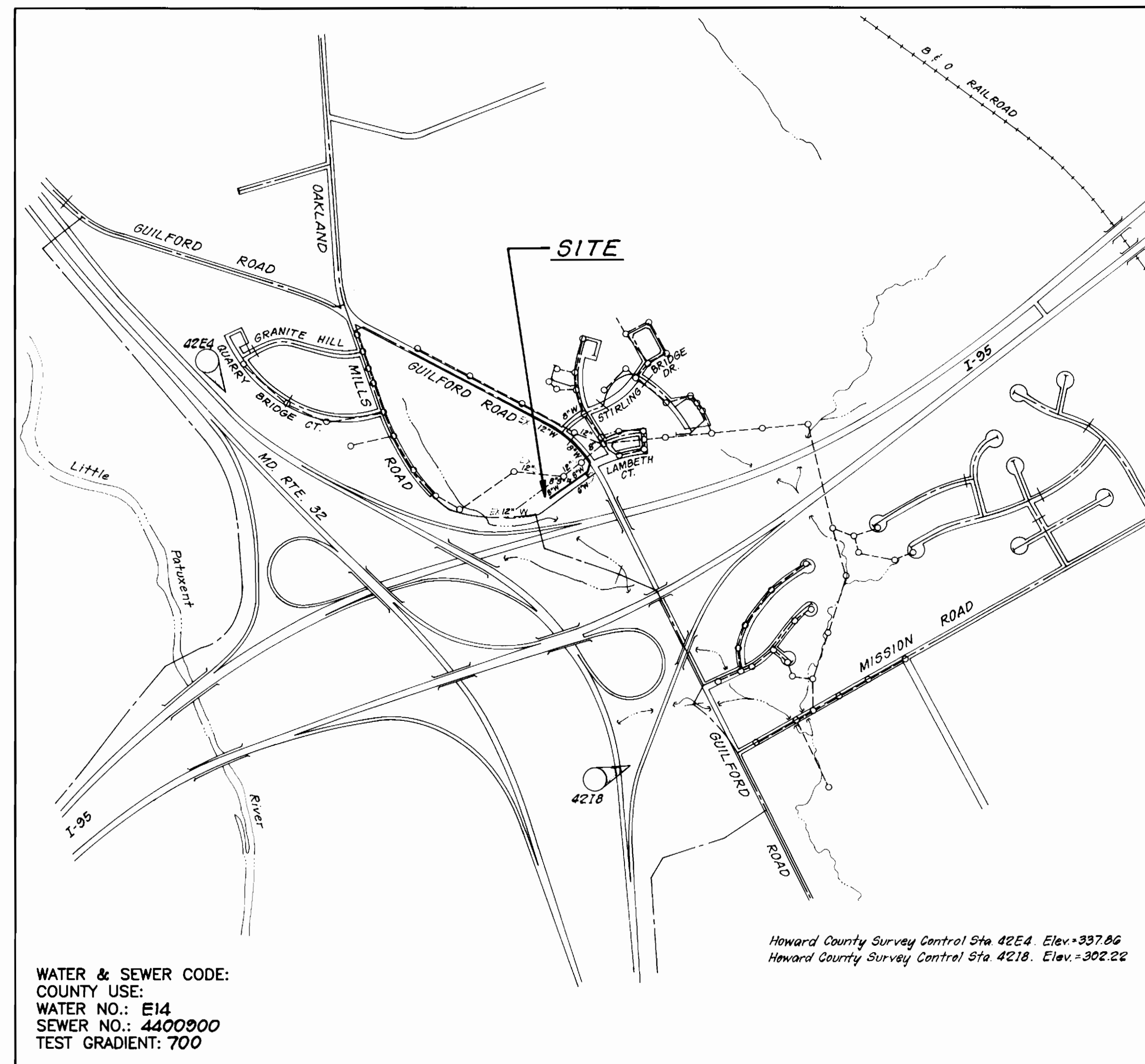
State Highway Administration	531-5533
BG&E Co. Contractor Services	850-4620
BG&E Co. Under Ground Damage Control	787-9068
Miss Utility	1-800-257-7777
Colonial Pipeline Co.	795-1390
Howard County Department of Public Works Bureau of Utilities	313-4900
9. Trees and shrubs are to be protected from damage to maximum extent. Trees and shrubs located within the construction strip are not to be removed or damaged by the contractor.
10. Contractor shall remove trees, stumps and roots along line of excavation. Payment for such removal shall be included in the unit price bid for construction of the main.
11. The contractor shall notify the Bureau of Highways, Howard County, at (410) 313-2450 at least five working days before any open cut of any County road or boring/jacking operation in County roads for laying water/sewer mains or house connections. The approval of these drawings will constitute compliance with DPW requirements per Section 18.114(a) of the Howard County Code.

**PART II - WATER**

1. All water mains to be D.I.P. Class 52 unless otherwise noted.
2. Tops of all water mains to have a minimum of 3'-1/2' cover unless otherwise noted.
3. Valves adjacent to tees shall be strapped to tees.
4. All fittings shall be buttressed or anchored with concrete in accordance with the Standard Details unless otherwise provided for on the drawings.
5. Fire hydrants shall be set to the bury line elevations shown on the drawings. All fire hydrants shall be restrained and buttressed with concrete in accordance with Standard Details. Soil around the fire hydrant shall be compacted in accordance with Sections 1000 and 1005 of the Standard Specifications.
6. The contractor shall not operate any water main valves on the existing water system.
7. All water house connections shall be for inside meter setting unless otherwise noted on plans or in specifications.
8. For sprinkler system for all townhomes or multi-family dwelling units shall have a minimum of 1" connection with a 3/4" meter.

**PART III - SEWER**

1. All sewer mains shall be DIP or P.V.C. unless otherwise noted.
2. All manholes shall be 4'-0" inside diameter unless otherwise noted.
3. Force mains shall be D.I.P. only.
4. Manholes shown with 12" and 16" walls are for brick manholes only.
5. Manholes designated W.T. in plan and profile shall have watertight frame and covers, Standard Detail G5.52. Where watertight manhole frame and cover is used, set top of frame 1" - 6" above finished grade unless otherwise noted on the drawings.
6. House(s) with the symbol "C.N.S." indicates that cellar cannot be served.



WATER & SEWER CODE:  
 COUNTY USE:  
 WATER NO.: E14  
 SEWER NO.: 4400900  
 TEST GRADIENT: 700

Howard County Survey Control Sta. 42E4. Elev.=337.86  
 Howard County Survey Control Sta. 4218. Elev.=302.22

**VICINITY MAP**

SCALE: 1" = 600'

TYPE OF BUILDING	TOWNHOUSE	CONDOMINIUM
NO. OF LOTS/PARCELS	ONE	
NO. OF WATER HOUSE CONNECTIONS	11	
NO. OF SEWER HOUSE CONNECTIONS	3	
DRAINAGE AREA	LITTLE PATUXENT	
TREATMENT PLANT	LITTLE PATUXENT WATER RECLAMATION PLANT	

SEDIMENT CONTROL MEASURES WILL BE IMPLEMENTED IN ACCORDANCE WITH SECTION 219 OF THE SPECIFICATIONS AND WITH SDP-96-147 DRAWING SEDIMENT AND EROSION CONTROL.

REVIEWED FOR HOWARD SOIL CONSERVATION DISTRICT AND MEETS TECHNICAL REQUIREMENTS.

*Charles Simmons* 11/26/96  
 SIGNATURE DATE  
 U. S. SOIL CONSERVATION SERVICE

THIS DEVELOPMENT PLAN IS APPROVED FOR SOIL EROSION AND SEDIMENT CONTROL BY THE HOWARD SOIL CONSERVATION DISTRICT.

APPROVED:  
*John K. Holsinger* 11/26/96  
 HOWARD S. C. D. DATE

**CONTRACT NO. 24-3579-D**  
**COLEMAN SITE**  
**BUILDINGS A AND B**  
**HOWARD COUNTY, MARYLAND**  
**DEPARTMENT OF PUBLIC WORKS**

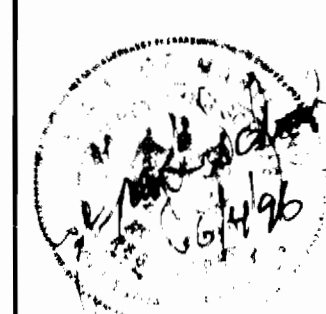
ITEMS	QUANTITIES ESTIMATED	AS-BUILT		
		QUANTITIES	TYPE	MANUFACTURER/SUPPLIER
8" W	647 LF	647 LF	CL 52 DIP	Griffin Pipe Products
6" W	26 LF	66 LF	CL 52 DIP	Griffin Pipe Products
8" S	10 LF	10 LF	SDR-35 PVC	J.M. Manufacturing / BRS
TYPE CROWN	2 EA	2 EA	CB 4.215 Saddle	Romac Industries / BRS
4" SHC	30 LF	30 LF	SDR-35 PVC	J.M. Manufacturing / BRS
1" W/C	165 LF	172 LF	"K" Copper	Howell Metals / BRS
FH	2 EA	2 EA		Muller Jr. / BRS
0" V	2 EA	3 EA	Gate Valve	Muller Jr. / BRS
1/2" Drain	1 EA	1 EA	Flap	Municipal & Construction Sales
2" V	1 EA	1 EA	Gate Valve	Muller Jr. / BRS

NAME OF UTILITY CONTRACTOR: FALLSTON UTILITIES  
 SURVEY AND DRAFTING DIVISION AS-BUILT DATE: 11-04-97  
 WATER & SEWER AS-BUILT

DEPARTMENT OF PUBLIC WORKS  
 HOWARD COUNTY, MARYLAND

DEPARTMENT OF PLANNING & ZONING  
 HOWARD COUNTY, MARYLAND

**CFE** CLARK · FINEFROCK & SACKETT, INC.  
 ENGINEERS · PLANNERS · SURVEYORS  
 7135 MINSTREL WAY COLUMBIA, MD 21045  
 (410) 381-7500 BALT. (301) 621-8100 WASH.



DES:	CM
DRN:	LAI
CHK:	
DATE:	BAL 1 12-4-95
BY:	NO.
REVISION:	

TITLE SHEET

**COLEMAN SITE**  
**BUILDINGS A AND B**  
 6TH ELECTION DISTRICT  
 HOWARD COUNTY, MARYLAND  
**CONTRACT No. 24-3579-D**

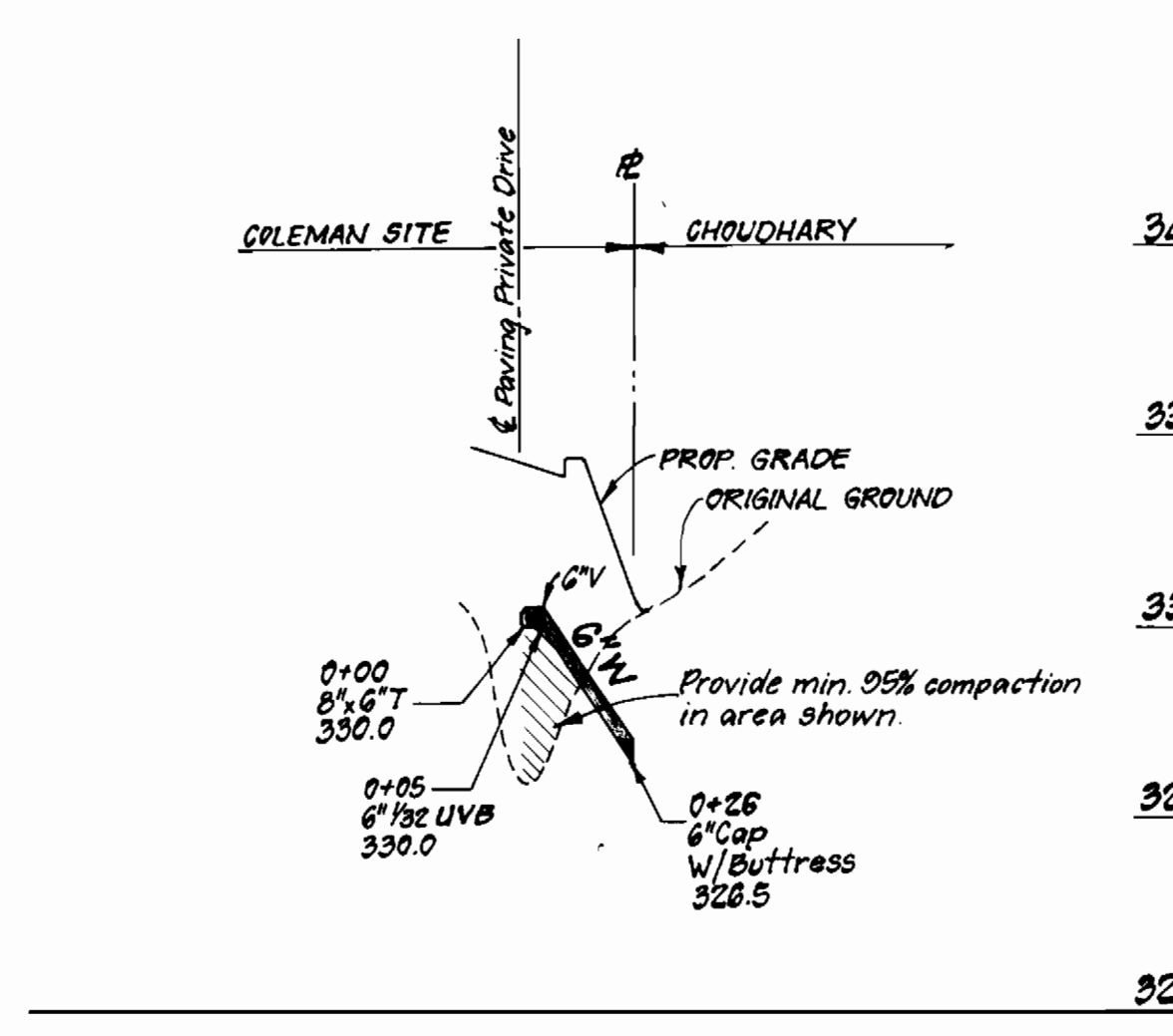
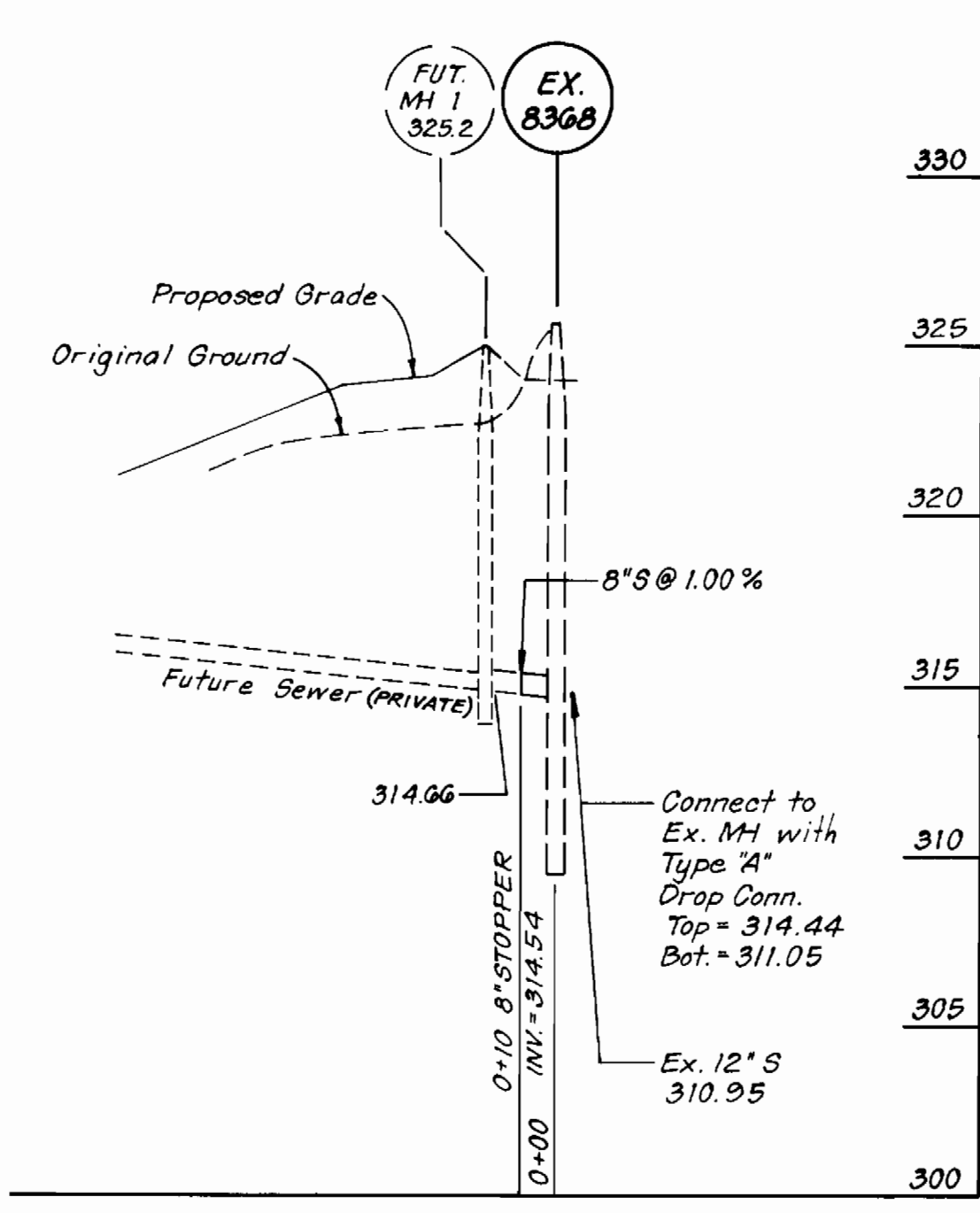
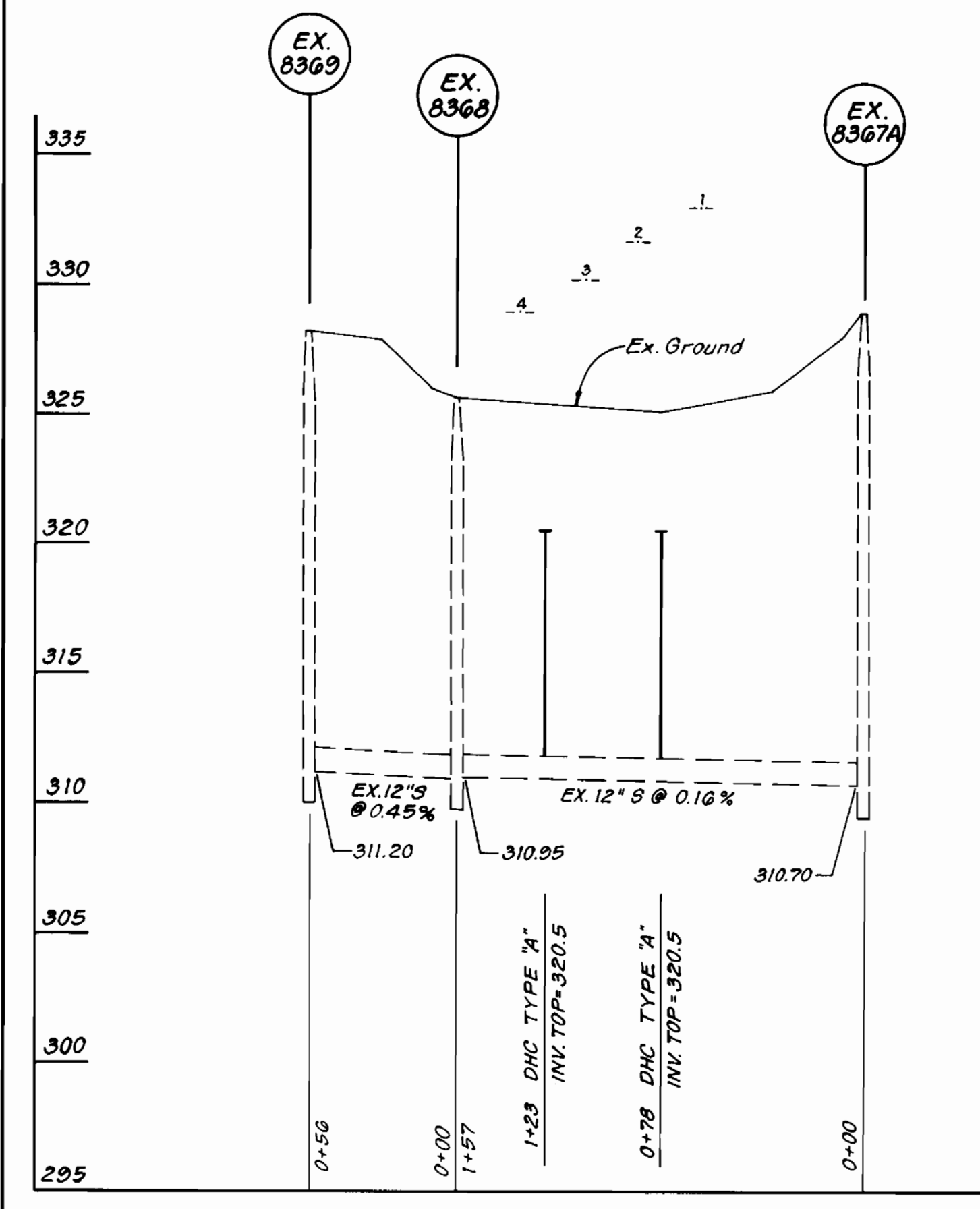
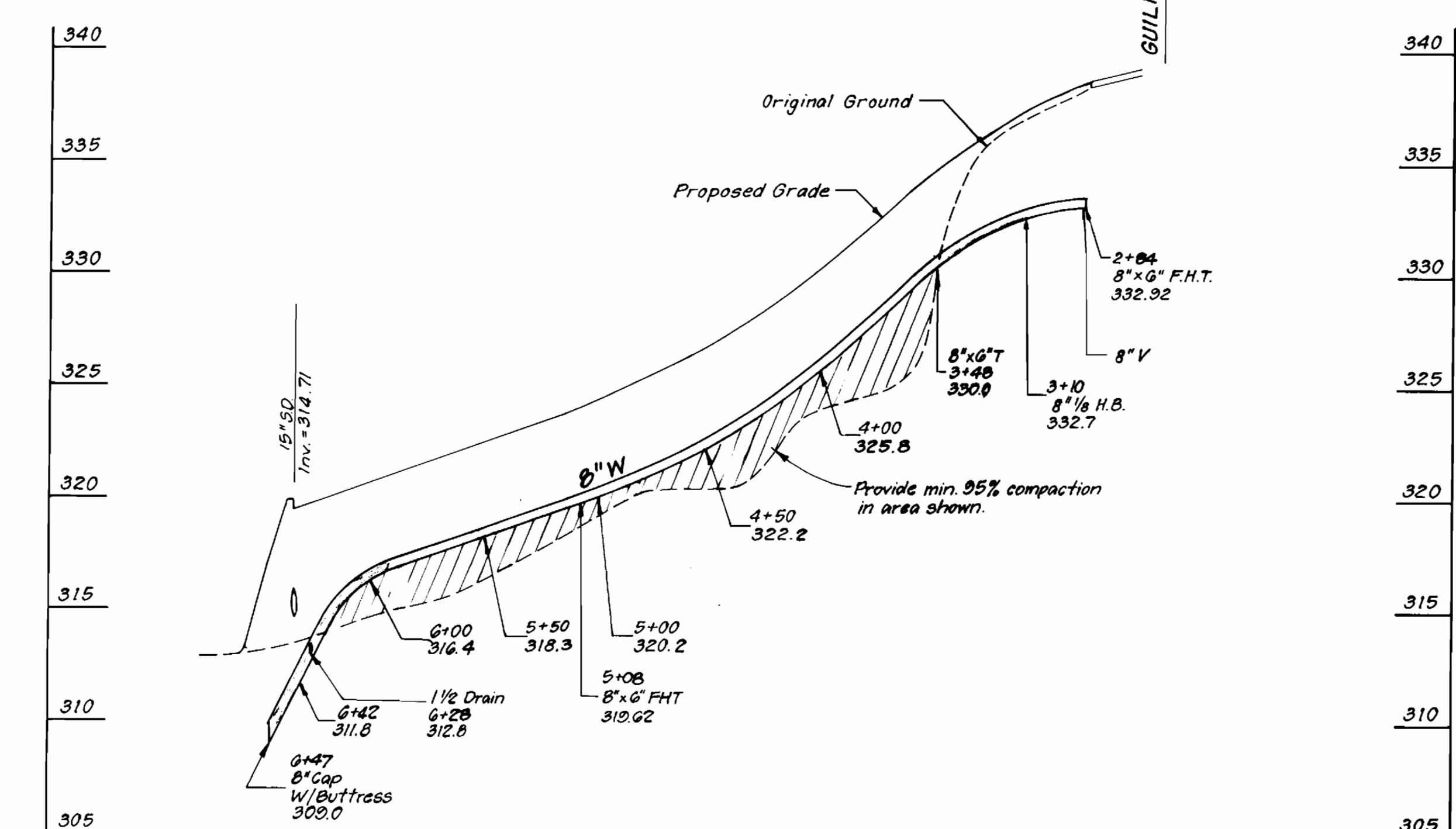
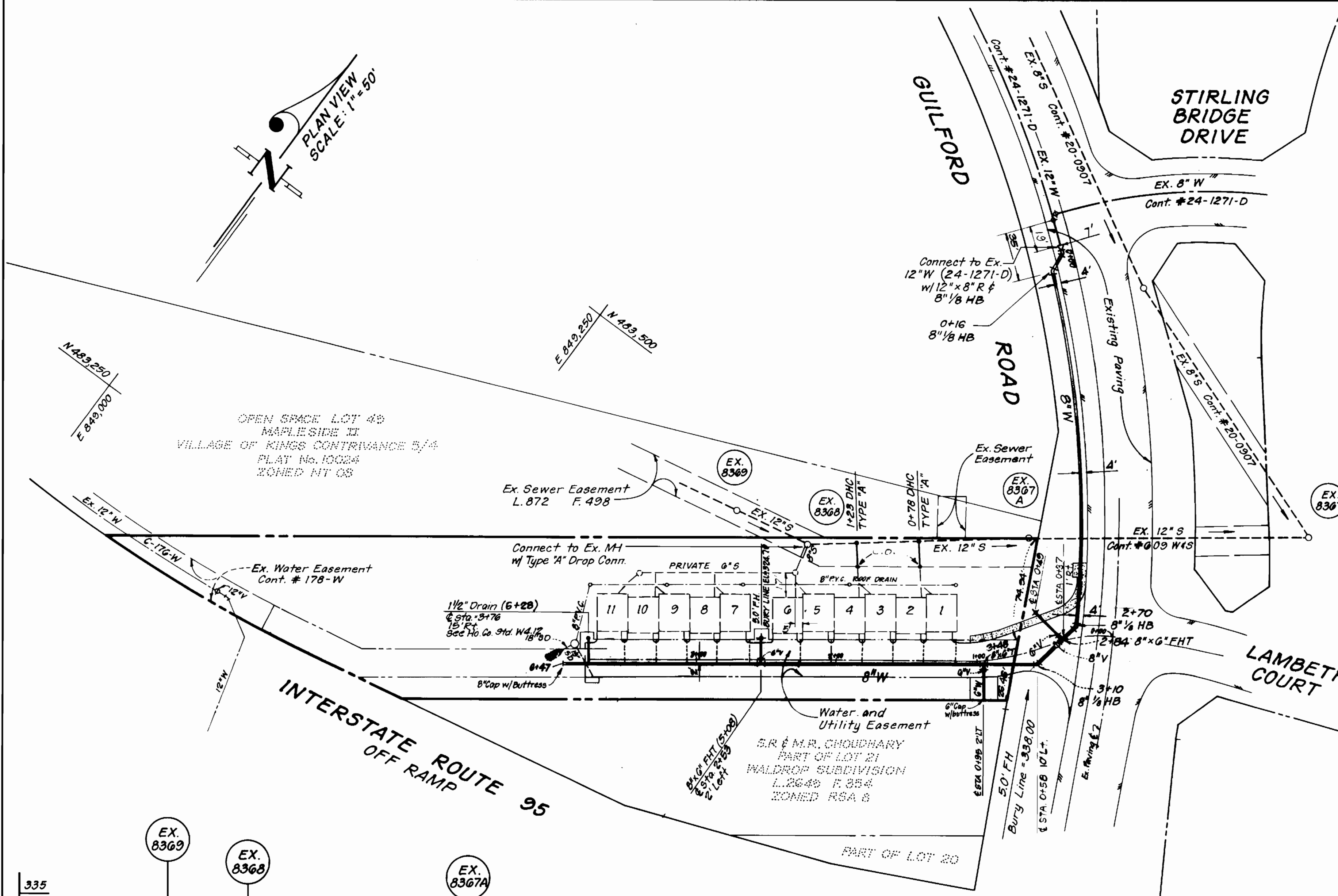
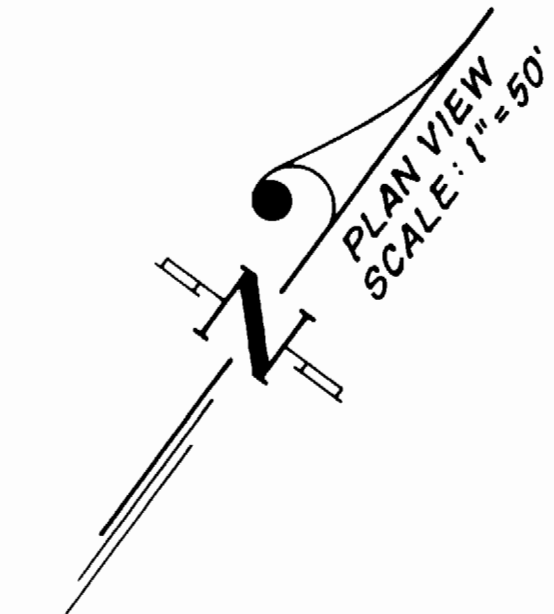
SCALE:

AS SHOWN

SHEET

1 OF 2

B 2 96 - REVISED



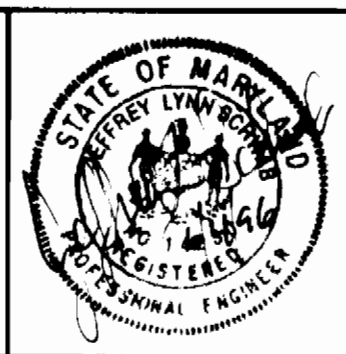
FROM:	TO:	DIST.	FROM:	TO:	DIST.	FROM:	TO:	DIST.	FROM:	TO:	DIST.
EX. 12" W	24-1271-D	0+00	0+00	0+16	335.5	0+00	0+16	335.5	0+00	0+16	335.5
0+16	0+26	335.3	0+16	0+26	335.3	0+16	0+26	335.3	0+16	0+26	335.3
0+26	0+42	334.0	0+26	0+42	334.0	0+26	0+42	334.0	0+26	0+42	334.0
0+42	0+50	334.0	0+42	0+50	334.0	0+42	0+50	334.0	0+42	0+50	334.0
0+50	0+78	334.0	0+50	0+78	334.0	0+50	0+78	334.0	0+50	0+78	334.0
0+78	1+00	334.0	0+78	1+00	334.0	0+78	1+00	334.0	0+78	1+00	334.0
1+00	1+50	334.0	1+00	1+50	334.0	1+00	1+50	334.0	1+00	1+50	334.0
1+50	2+00	334.0	1+50	2+00	334.0	1+50	2+00	334.0	1+50	2+00	334.0
2+00	2+70	334.0	2+00	2+70	334.0	2+00	2+70	334.0	2+00	2+70	334.0
2+70	2+84	332.92	2+70	2+84	332.92	2+70	2+84	332.92	2+70	2+84	332.92

**PROFILE SCALE**  
 HORIZ. : 1" = 50'  
 VERT. : 1" = 5'

DEPARTMENT OF PUBLIC WORKS  
 HOWARD COUNTY, MARYLAND

DEPARTMENT OF PLANNING & ZONING  
 HOWARD COUNTY, MARYLAND

**CLARK · FINEFROCK & SACKETT, INC.**  
 ENGINEERS · PLANNERS · SURVEYORS  
 7135 MINSTREL WAY COLUMBIA, MD 21045  
 (410) 381-7500 BALT. (301) 621-8100 WASH.



DES:	CM
DRN:	LA1
CHK:	
DATE:	12-4-96
BY:	BAL
NO.:	1
REVISION:	Rev. 8" W (Guilford Rd.) Plan and Profile
DATE:	12-4-96

**PLAN AND PROFILES**  
**WATER AND SEWER MAINS**

**COLEMAN SITE**  
 BUILDINGS A AND B  
 6TH ELECTION DISTRICT  
 HOWARD COUNTY, MARYLAND  
**CONTRACT No. 24-3579-D**

SCALE:  
 AS SHOWN  
 SHEET  
 2 OF 2