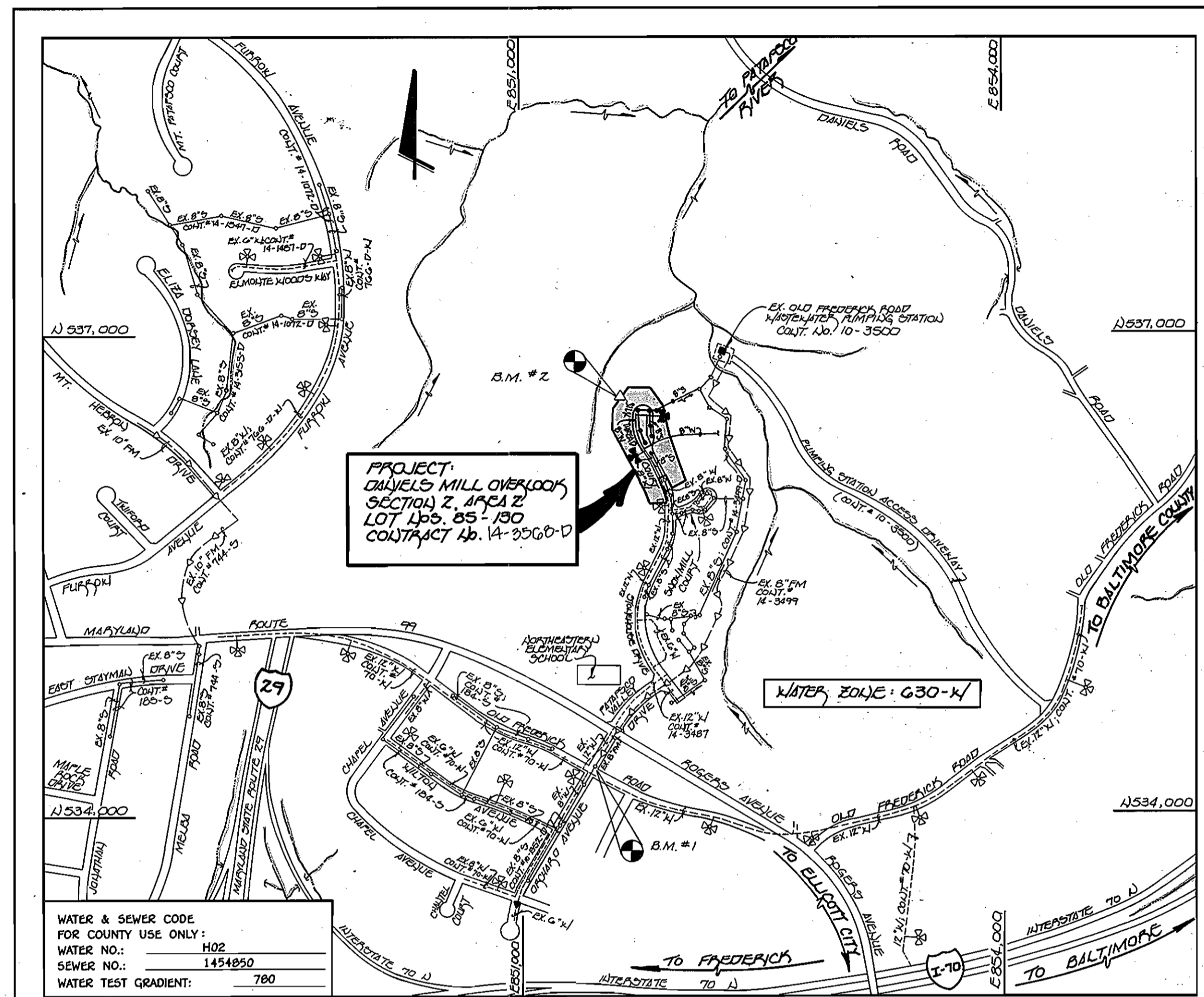


QUANTITIES				
ITEM	ESTIMATED	QUANTITIES	AS-BUILT	SUPPLIER
			TYPE	
8" SEWER	812 L.F.	778.0	P.V.C.	J.M. MANUFACTURE
8" SEWER D.I.P.	135 L.F.	135.0	D.I.P.	ATLANTIC STATES
4" SEWER	860 L.F.	865.0	P.V.C.	J.M.
MANHOLES	9 EACH	9 EA.	PRECAST	ATLANTIC CON. PRO.
12" WATER	218 L.F.	217	O.I.P.	ATLANTIC STATES
8" WATER	1,013 L.F.	997	O.I.P.	ATLANTIC STATES
6" WATER	43 L.F.	40	D.I.P.	ATLANTIC STATES
1" W.H.C.	846 L.F.	1009		READING TUBE
FIRE HYDRANTS	2 EACH	2 EA.		MUELLER CO.
12" x 8" REDUCERS	1 EACH	1 EA.		UNION FOUNDRY
8" x 6" TEE	4 EACH	4 EA.		"
8" VALVE	5 EACH	5 EA.		MUELLER CO.
8" 1/2" H.B.	1 EACH	1 EA.		UNION FOUNDRY
8" PLUG BUTTRESS	2 EACH	2 EA.		"
8" x 6" REDUCER	1 EACH	1 EA.		"
8" x 6" TEE	2 EACH	2 EA.		"
8" 1/2" H.B.	2 EACH	2 EA.		MUELLER CO.
6" VALVE	2 EACH	2 EA.		MUELLER CO.
1 1/2" DRAIN VAULT	1 EACH	1 EA.		MUELLER CO.



WATER & SEWER CODE FOR COUNTY USE ONLY:
 WATER NO.: H02
 SEWER NO.: 1454850
 WATER TEST GRADIENT: 780

TYPE OF BUILDING: RESIDENTIAL: SINGLE FAMILY DETACHED
 NUMBER OF LOTS: 46 (44 BUILDABLE)
 NO. OF WATER HOUSE CONNECTIONS: 34
 NO. OF SEWER HOUSE CONNECTIONS: 30
 DRAINAGE AREA: PATAPSCO
 TREATMENT PLANT: PATAPSCO W.W.T.P.; CITY OF BALTIMORE, VIA THE OLD FREDERICK ROAD PUMPING STATION

VICINITY MAP
 SCALE: 1"=600'

PLAN REFERENCE NUMBERS:
 F 97-30

GENERAL NOTES

- APPROXIMATE LOCATION OF EXISTING MAINS ARE SHOWN. THE CONTRACTOR SHALL TAKE ALL NECESSARY PRECAUTIONS TO PROTECT EXISTING MAINS AND SERVICES AND MAINTAIN UNINTERRUPTED SUPPLY. ANY DAMAGE INCURRED SHALL BE REPAIRED IMMEDIATELY TO THE SATISFACTION OF THE ENGINEER AT THE CONTRACTOR'S EXPENSE.
- ALL HORIZONTAL CONTROLS ARE BASED ON MARYLAND STATE COORDINATES.
- ALL VERTICAL CONTROLS ARE BASED ON U.S.G.S. DATUM.
- ALL PIPE ELEVATIONS ARE INVERT ELEVATIONS.
- CLEAR ALL UTILITIES BY A MINIMUM OF 6". CLEAR ALL POLES BY 2'-0" MINIMUM.
- FOR DETAILS NOT SHOWN ON THE DRAWINGS, AND FOR MATERIALS AND CONSTRUCTION METHODS, USE HOWARD COUNTY DESIGN MANUAL VOLUME IV, STANDARD SPECIFICATIONS AND DETAILS FOR CONSTRUCTION (1991 AMENDMENTS) THE CONTRACTOR SHALL HAVE A COPY OF VOLUME IV ON THE JOB SITE.
- WHERE TEST PITS HAVE BEEN MADE ON EXISTING UTILITIES, THEY ARE NOTED BY THE SYMBOL [] AT THE LOCATION OF THE TEST PIT. A NOTE OR NOTES CONTAINING THE RESULTS OF THE TEST PIT OR PITS IS INCLUDED ON THE DRAWINGS. EXISTING UTILITIES IN THE VICINITY OF THE PROPOSED WORK FOR WHICH TEST PITS HAVE NOT BEEN DUG SHALL BE VERIFIED BY THE CONTRACTOR TO HIS OWN SATISFACTION. ANY DAMAGE TO EXISTING FACILITIES DUE TO THE CONTRACTOR'S NEGLIGENCE SHALL BE REPAIRED AT THE CONTRACTOR'S EXPENSE.
- CONTRACTOR SHALL NOTIFY THE FOLLOWING UTILITIES OR AGENCIES AT LEAST FIVE WORKING DAYS BEFORE STARTING WORK SHOWN ON THESE PLANS:
 STATE HIGHWAY ADMINISTRATION - 531-5533
 BALTIMORE GAS & ELECTRIC CO. - CONTRACTOR SERVICES - 850-4620
 BALTIMORE GAS & ELECTRIC CO. - UNDER GROUND DAMAGE CONTROL - 787-9068
 MISS UTILITY - 1-800-257-7777
 COLONIAL PIPELINE CO. - 795-1390
 BUREAU OF UTILITIES, HOWARD COUNTY DEPARTMENT OF PUBLIC WORKS - 313-4900
- TREES AND SHRUBS ARE TO BE PROTECTED FROM DAMAGE TO MAXIMUM EXTENT. TREES AND SHRUBS LOCATED WITHIN THE CONSTRUCTION STRIP ARE NOT TO BE REMOVED OR DAMAGED BY THE CONTRACTOR.
- CONTRACTOR SHALL REMOVE TREES, STUMPS AND ROOTS ALONG THE LINE OF EXCAVATION. PAYMENT FOR SUCH REMOVAL SHALL BE INCLUDED IN THE UNIT PRICE BID FOR CONSTRUCTION OF THE MAIN.
- ALL SEWER MAINS SHALL BE D.I.P. OR P.V.C. UNLESS OTHERWISE NOTED.
- ALL MANHOLES SHALL BE 4'-0" INSIDE DIAMETER UNLESS OTHERWISE NOTED.
- T.B. DENOTES TEST BORING.
- MANHOLES SHOWN WITH 12" AND 18" WALLS ARE FOR BRICK MANHOLES ONLY.
- MANHOLES DESIGNATED W.T. IN PLAN AND PROFILE SHALL HAVE WATERTIGHT FRAME AND COVERS, STANDARD DETAIL G 5.52.
- WHERE WATERTIGHT MANHOLE FRAME AND COVER IS USED, SET TOP OF FRAME 1'-6" ABOVE FINISHED GRADE UNLESS OTHERWISE NOTED ON THE PLANS OR IN THE SPECIFICATIONS.
- HOUSE(S) WITH THE SYMBOL "C.N.S." INDICATES THAT THE CELLAR CANNOT BE SERVED.
- ALL WATER HOUSE CONNECTIONS SHALL BE FOR INSIDE METER SETTING, UNLESS OTHERWISE NOTED ON THE PLANS OR IN THE SPECIFICATIONS.
- MANHOLES LOCATED WITHIN THE PROPOSED ROADWAY SHALL HAVE STANDARD HEAVY TRAFFIC MANHOLE FRAMES AND COVERS, STANDARD DETAIL G5.51.
- WATER MAINS AND WATER HOUSE CONNECTION LINES MUST BE PLACED AS TO HAVE ONE (1) FOOT SEPARATION FROM THE SEWER MAIN OR SEWER HOUSE CONNECTION AS THEY PASS ABOUT IT.
- ALL WATER MAINS SHALL BE D.I.P., CLASS 52 UNLESS OTHERWISE NOTED.
- TOPS OF ALL WATER MAINS TO HAVE A MINIMUM OF 3-1/2" COVER UNLESS OTHERWISE NOTED.
- VALVES ADJACENT TO TEES SHALL BE STRAPPED TO TEES.
- ALL FITTINGS SHALL BE BUTTRESSED OR ANCHORED WITH CONCRETE IN ACCORDANCE WITH THE STANDARD DETAILS UNLESS OTHERWISE PROVIDED FOR ON THE DRAWINGS.
- FIRE HYDRANTS SHALL BE SET TO THE BURY LINE ELEVATION SHOWN ON THE DRAWINGS. ALL FIRE HYDRANTS SHALL BE RESTRAINED AND BUTTRESSED WITH CONCRETE IN ACCORDANCE WITH THE STANDARD DETAILS (W1.11 AND W2.13). SOIL AROUND THE FIRE HYDRANT SHALL BE COMPACTED IN ACCORDANCE WITH SECTION 1000 AND 1005 OF THE STANDARD SPECIFICATIONS.
- THE CONTRACTOR SHALL NOT OPERATE ANY WATER MAIN VALVES ON THE EXISTING WATER SYSTEM.
- ALL D.I.P. FITTINGS SHALL BE IN ACCORDANCE WITH AWWA SPECIFICATIONS C-153; DUCTILE IRON COMPACT FITTINGS, 3-INCH THROUGH 12-INCH FOR WATER AND OTHER LIQUIDS.
- THE CONTRACTOR SHALL NOTIFY THE BUREAU OF HIGHWAYS, HOWARD COUNTY, (410) 313-2450 AT LEAST FIVE WORKING DAYS BEFORE ANY OPEN CUT OF ANY COUNTY ROAD OR BORING/JACKING OPERATION IN COUNTY ROADS FOR LAYING WATER/SEWER MAINS OR HOUSE CONNECTIONS. THE APPROVAL OF THESE DRAWINGS WILL CONSTITUTE COMPLIANCE WITH DPW REQUIREMENTS PER SECTION 18.11(4) OF THE HOWARD COUNTY CODE.
- TWIN WATER HOUSE CONNECTIONS SHALL UTILIZE 1/2" INCH COPPER TUBING FROM THE WATER MAIN TO THE "Y" BRANCH AND 1" INCH COPPER TUBING FROM THE "Y" BRANCH TO THE BALL VALVE CURD SERVICE BOX. SINGLE WATER HOUSE CONNECTIONS SHALL UTILIZE 1" INCH COPPER TUBING.

BENCHMARKS

BENCHMARK No. 1 ELEV. 481.10
 8" DUCTILE IRON MANHOLE P.M. No. 1 (CONT. NO. 14-3568-D)
 1) 534, 318.0510000 ELEV. 475.348000

BENCHMARK No. 2 ELEV. 407.75
 HUB WITH STAKE MARKED "TRANSVERSE PT. 12, 116"
 1) 536, 742.360000 ELEV. 766.890000

CONTRACT NO. 14-3568-D
DANIELS MILL OVERLOOK
SECTION 2, AREA 2
LOT NOS. 85 - 130
WATER AND SEWER MAIN EXTENSIONS
HOWARD COUNTY, MARYLAND

REVIEWED FOR HOWARD COUNTY SOIL CONSERVATION DISTRICT AND MEETS TECHNICAL REQUIREMENTS.
Clayton Simons /as 2/5/97
 U.S.D.A. NATURAL RESOURCES CONSERVATION SERVICE DATE

THIS DEVELOPMENT IS APPROVED FOR EROSION AND SEDIMENT CONTROL BY HOWARD SOIL CONSERVATION DISTRICT.
 APPROVED: *John Selby* 2/5/97
 HOWARD SOIL CONSERVATION DISTRICT DATE

SEDIMENT CONTROL MEASURES FOR THIS CONTRACT WILL BE IMPLEMENTED IN ACCORDANCE WITH SECTION 219 OF THE HOWARD COUNTY DESIGN MANUAL & STANDARDS AND SPECIFICATIONS FOR SOIL EROSION AND SEDIMENT CONTROL IN DEVELOPING AREAS AS SHOWN ON THESE PLANS AND UNDER F 97-30.

Michael J. McCann FOR RYLAND HOMES 1/15/97
 SIGNATURE OF DEVELOPER DATE

DEPARTMENT OF PUBLIC WORKS
 HOWARD COUNTY, MARYLAND

DEPARTMENT OF PLANNING AND ZONING
 HOWARD COUNTY, MARYLAND

Michael J. McCann 2/5/97
 CHIEF, BUREAU OF UTILITIES DATE

John Selby 2/5/97
 CHIEF, DEVELOPMENT ENGINEERING DIVISION DATE

Fisher, Collins & Carter, Inc.
 CIVIL ENGINEERING CONSULTANTS &
 LAND SURVEYORS
 CENTENNIAL SQUARE OFFICE PARK
 10272 Baltimore National Pike
 Ellicott City, Maryland 21042
 (410) 461-2855

STATE OF MARYLAND
 REGISTERED PROFESSIONAL ENGINEER
 TERRELL A. FISHER

DES: M.J.M.			
DRWN: M.J.M./J.M.M.			
CHK: P.W.K.	K.C.T.	AS-BUILT - AS-BUILT CONDITIONS ADDED TO PLAN	1/98
DATE: 1/14/97	F.C.C.	REVISE KAC'S IN QUANTITIES BLOCK	7/97
BY NO.		REVISION	DATE

TITLE SHEET

600' SCALE MAP NO. 17 BLOCK NO. 12

DANIELS MILL OVERLOOK
SECTION 2, AREA 2
LOT NOS. 85-130
CONTRACT NO. 14-3568-D
SECOND ELECTION DISTRICT
HOWARD COUNTY, MARYLAND

SCALE AS SHOWN

SHEET 1 OF 4

CONTRACT NO. 14-3568-D
 DANIELS MILL OVERLOOK
 SECTION 2, AREA 2
 LOT NOS. 85-130
 WATER AND SEWER MAIN EXTENSIONS
 HOWARD COUNTY, MARYLAND

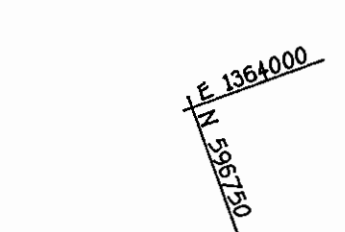
SHC INVERTS @ PROPERTY LINE CHART		
STATION	LOT	ELEVATION
EX. MH 314 TO MH 408		
0+08 FT.	125	416.73
0+21 LT.	90	417.53
* 0+28 FT.	124	417.57
0+60 FT.	123	416.81
0+70 FT.	91	419.49
0+92 FT.	122	420.09
1+04 LT.	92	420.55
* 1+27 LT.	93	421.77
1+37 FT.	121	421.89
1+47 LT.	94	422.57
* 1+56 LT.	120	422.65
@ MH 408 FT.	95 (CHC @ MH)	423.57
@ MH 408 FT.	119 (CHC @ MH)	423.31
MH 401 TO MH 402		
@ MH 402 FT.	111 (CHC @ MH)	419.03
MH 402 TO MH 403		
0+17 FT.	110	419.31
0+36 FT.	109	419.65
* 0+54 FT.	108	419.90
@ MH 403 FT.	107 (CHC @ MH)	420.03
MH 403 TO MH 404		
* 0+10 FT.	106	420.33
0+31 FT.	105	421.21
0+75 FT.	104	421.69
* 0+96 FT.	103	421.15
* 1+14 FT.	102	422.47
MH 404 TO MH 405		
* 0+07 FT.	101	422.97
0+30 FT.	100	423.09
* 0+51 FT.	99	423.09
0+73 FT.	98	424.25
@ MH 405 FT.	97	424.91
@ MH 405 FT.	96	423.13
MH 402 TO MH 406		
* 0+21 LT.	112	419.51
0+63 LT.	113	421.45
* 0+86 LT.	114	421.99
1+08 LT.	115	423.23
MH 406 TO MH 407		
* 0+20 LT.	116	423.95
0+44 LT.	117	424.81
@ MH 406 FT.	118	425.03

* INDICATED REVERSED STATION & ELEVATION

MANHOLE TABULATION CHART				
NO.	LP. STATION	DISTANCE	SLOPE	RIM ELEVATION
400				427.00
401	4+17	5' FT.	+1.0%	429.10
402	3+41	10' FT.	+1.0%	428.36
404	1+90	8' FT.	-2.0%	430.57
405	0+93	20' FT.	-1.5%	432.80
406	5+37	8' FT.	+1.0%	431.15
407	6+07	7' FT.	+1.0%	432.25
408	7+17	6' FT.	-5.5%	430.73
409				430.00

SET RIM FLUSH W/ EXISTING GROUND

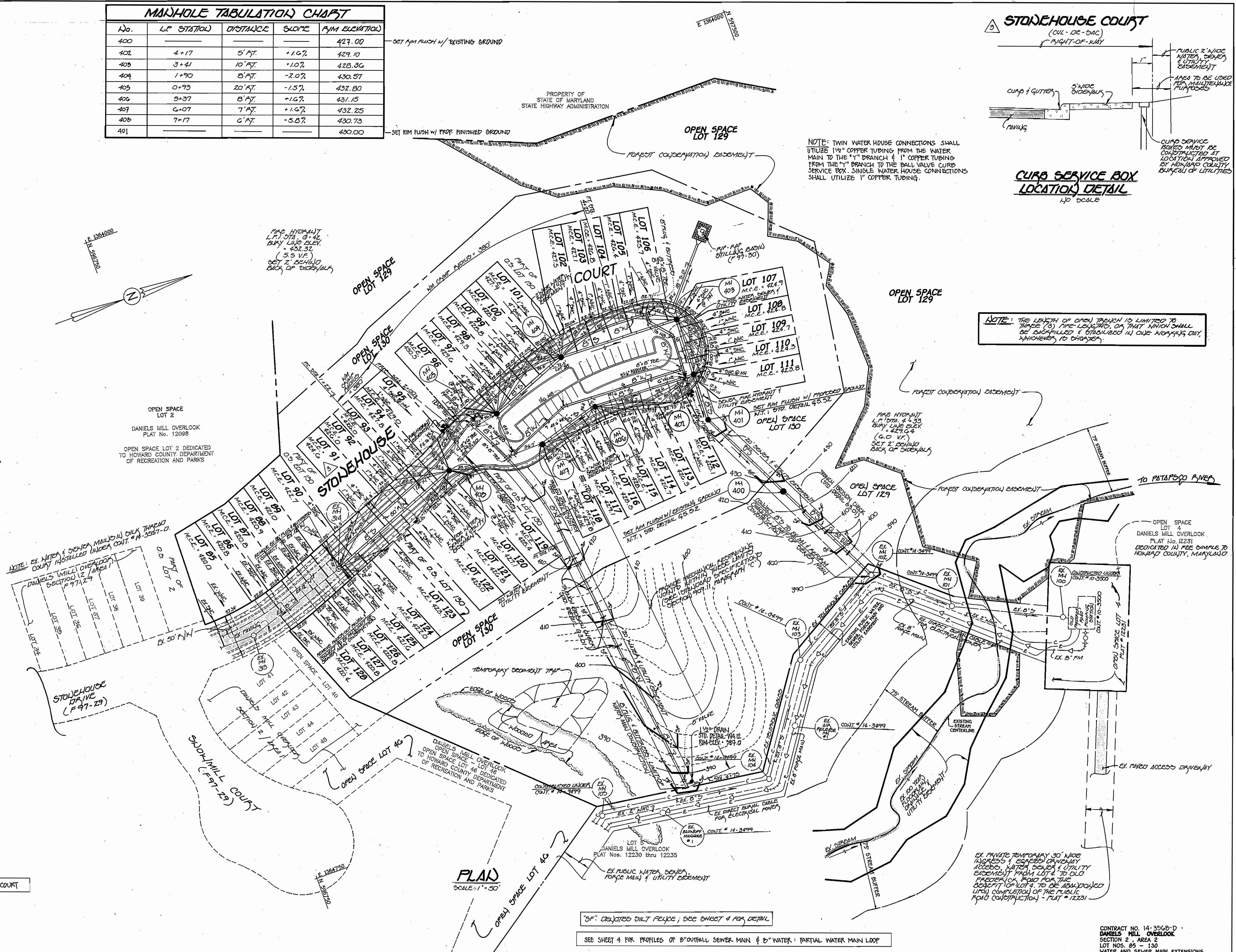
SET RIM FLUSH W/ PROP. FINISHED GROUND



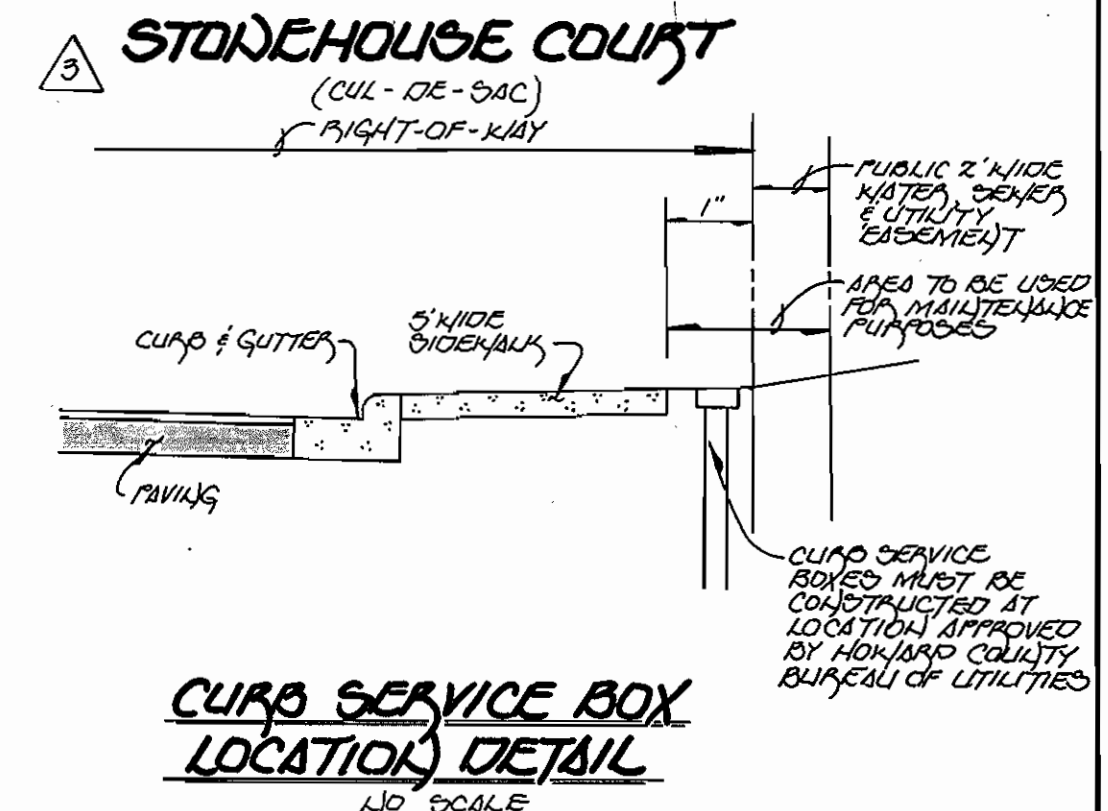
OPEN SPACE LOT 2
DANIELS MILL OVERLOOK
PLAT No. 12098
OPEN SPACE LOT 2 DEDICATED TO HOWARD COUNTY DEPARTMENT OF RECREATION AND PARKS

NOTE: EX. WATER & SEWER MAINS (SILK THREAD COURT) INSTALLED UNDER COURT # 14-3567-D.

NOTE: LOTS 85 THRU 89 & 126 THRU 128 HAVE BEEN PROVIDED WITH HOUSE CONNECTIONS UNDER DANIELS MILL OVERLOOK, SECTION 2, AREA 1, COURT # 14-3567-D. LOTS 85 THRU 90 & LOTS 125 THRU 128 HAVE BEEN PROVIDED WITH HOUSE CONNECTIONS UNDER DANIELS MILL OVERLOOK, SECTION 2, AREA 1, COURT # 14-3567-D.



NOTE: THE LENGTH OF OPEN TRANCH IS LIMITED TO 10 FEET. TRANCHES SHALL BE BACKFILLED & STABILIZED IN ONE WORKING DAY, WHICHEVER IS SHORTER.



SEE SHEET 3 FOR PROFILES OF "WATER & "SEWER MAINS IN SILK THREAD COURT

SEE SHEET 4 FOR PROFILES OF 8" OUTFALL SEWER MAIN & 8" WATER & PARTIAL WATER MAIN LOOP

EX. PRIVATE TEMPORARY 30" WIDE INGRESS & EGRESS DRIVEWAY ACCESS, WATER SEWER & UTILITY EASEMENT FROM LOT 4 TO OLD FARMER'S ROAD FOR THE BENEFIT OF LOT 4 TO BE ABANDONED UPON COMPLETION OF THE PUBLIC ROAD CONSTRUCTION - PLAT # 12231

DEPARTMENT OF PUBLIC WORKS HOWARD COUNTY, MARYLAND Michael A. Swannell, P.E. 2/7/17 CHIEF, BUREAU OF UTILITIES	DEPARTMENT OF PLANNING AND ZONING HOWARD COUNTY, MARYLAND [Signature] 2/7/17 CHIEF, DEVELOPMENT ENGINEERING DIVISION	Fisher, Collins & Carter, Inc. CIVIL ENGINEERING CONSULTANTS & LAND SURVEYORS CENTENNIAL SQUARES OFFICE PARK 10272 Baltimore National Pike Ellicott City, Maryland 21042 (410) 461-2855	DES: M.J.M. DRWN: M.J.M./J.M.M. CHK: P.W.K. DATE: 1/11/17	R.C.I. AS-BUILT CONDITIONS ADDED TO PLAN WATER ONLY 1/98 F.C.C. REVISE NO. NAME FROM "SILK THREAD" TO "STONEHOUSE COURT" 7/97 F.C.C. REVISE CHC INVERT @ PROPERTY LINE CHART 7/97 F.C.C. REVISE LOCATION OF M/4 CHC'S TO W/4'S AS SHOWN ON PLAN 7/97	PLAN WATER AND SEWER MAINS "WATER AS-BUILT" 1/98 600' SCALE MAP NO. 17 BLOCK NO. 12	DANIELS MILL OVERLOOK SECTION 2, AREA 2 LOT NOS. 89 - 130 CONTRACT NO. 14-3568-D SECOND ELECTION DISTRICT HOWARD COUNTY, MARYLAND	SCALE AS SHOWN SHEET 2 OF 4
---	---	--	--	---	---	---	--------------------------------

SHC INVERTS @ PROPERTY LINE CHART

STATION	LOT	ELEVATION
EX. MH 314 TO MH 403		
0+08 FT.	125	416.75
0+21 LT.	90	417.53
* 0+28 FT.	124	417.57
0+60 FT.	123	418.81
0+70 FT.	91	419.49
0+92 FT.	122	420.09
1+04 LT.	92	420.80
* 1+27 LT.	93	421.77
1+37 FT.	121	421.89
1+47 LT.	94	422.57
* 1+56 FT.	120	422.65
@ MH 403 LT.	95 (CHC @ MH)	423.57
@ MH 403 FT.	119 (CHC @ MH)	423.31
MH 401 TO MH 402		
@ MH 402 FT.	111 (CHC @ MH)	419.03
MH 402 TO MH 403		
0+17 FT.	110	419.31
0+36 FT.	109	419.65
* 0+54 FT.	108	419.90
@ MH 403 FT.	107 (CHC @ MH)	420.03
MH 403 TO MH 404		
* 0+10 FT.	106	420.33
0+51 FT.	105	421.21
0+73 FT.	104	421.69
* 0+96 FT.	103	421.15
* 1+14 FT.	102	422.47
MH 404 TO MH 405		
* 0+07 FT.	101	422.97
0+30 FT.	100	423.09
* 0+51 FT.	99	423.09
0+73 FT.	98	424.25
@ MH 405 FT.	97	424.91
@ MH 405 FT.	96	423.15
MH 402 TO MH 406		
* 0+21 LT.	112	419.51
0+63 LT.	113	421.45
* 0+86 LT.	114	421.99
1+03 LT.	115	423.23
MH 406 TO MH 407		
* 0+20 LT.	116	423.95
0+44 LT.	117	424.31
@ MH 407 LT.	118	425.03

* INDICATED REVISION STATION & ELEVATION

MANHOLE TABULATION CHART

No.	L.P. STATION	DISTANCE	SLOPE	R.I.M. ELEVATION
400				429.00
401	4+17	5' FT.	+1.0%	429.10
402	3+41	10' FT.	+1.0%	428.36
403	1+90	8' FT.	-2.0%	430.57
404	0+93	20' FT.	-1.5%	432.80
405	5+37	8' FT.	+1.0%	431.15
407	6+07	7' FT.	+1.0%	432.25
408	7+17	6' FT.	-3.5%	430.73
409				430.00

SET RIM FLUSH W/ PROPOSED FINISHED GROUND

SET RIM FLUSH W/ EXISTING GROUND

PROPERTY OF STATE OF MARYLAND STATE HIGHWAY ADMINISTRATION

FORREST CONSERVATION EASEMENT

OPEN SPACE LOT 129

OPEN SPACE LOT 130

OPEN SPACE LOT 127

OPEN SPACE LOT 128

OPEN SPACE LOT 129

OPEN SPACE LOT 130

OPEN SPACE LOT 127

OPEN SPACE LOT 128

OPEN SPACE LOT 129

OPEN SPACE LOT 130

OPEN SPACE LOT 127

OPEN SPACE LOT 128

OPEN SPACE LOT 129

OPEN SPACE LOT 130

OPEN SPACE LOT 127

OPEN SPACE LOT 128

OPEN SPACE LOT 129

OPEN SPACE LOT 130

OPEN SPACE LOT 127

OPEN SPACE LOT 128

OPEN SPACE LOT 129

OPEN SPACE LOT 130

OPEN SPACE LOT 127

OPEN SPACE LOT 128

OPEN SPACE LOT 129

OPEN SPACE LOT 130

OPEN SPACE LOT 127

OPEN SPACE LOT 128

OPEN SPACE LOT 129

OPEN SPACE LOT 130

OPEN SPACE LOT 127

OPEN SPACE LOT 128

OPEN SPACE LOT 129

OPEN SPACE LOT 130

OPEN SPACE LOT 127

OPEN SPACE LOT 128

OPEN SPACE LOT 129

OPEN SPACE LOT 130

OPEN SPACE LOT 127

OPEN SPACE LOT 128

OPEN SPACE LOT 129

OPEN SPACE LOT 130

OPEN SPACE LOT 127

OPEN SPACE LOT 128

OPEN SPACE LOT 129

OPEN SPACE LOT 130

OPEN SPACE LOT 127

OPEN SPACE LOT 128

OPEN SPACE LOT 129

OPEN SPACE LOT 130

OPEN SPACE LOT 127

OPEN SPACE LOT 128

OPEN SPACE LOT 129

OPEN SPACE LOT 130

OPEN SPACE LOT 127

OPEN SPACE LOT 128

OPEN SPACE LOT 129

OPEN SPACE LOT 130

OPEN SPACE LOT 127

OPEN SPACE LOT 128

OPEN SPACE LOT 129

OPEN SPACE LOT 130

OPEN SPACE LOT 127

OPEN SPACE LOT 128

OPEN SPACE LOT 129

OPEN SPACE LOT 130

OPEN SPACE LOT 127

OPEN SPACE LOT 128

OPEN SPACE LOT 129

OPEN SPACE LOT 130

OPEN SPACE LOT 127

OPEN SPACE LOT 128

OPEN SPACE LOT 129

OPEN SPACE LOT 130

OPEN SPACE LOT 127

OPEN SPACE LOT 128

OPEN SPACE LOT 129

OPEN SPACE LOT 130

OPEN SPACE LOT 127

OPEN SPACE LOT 128

OPEN SPACE LOT 129

OPEN SPACE LOT 130

OPEN SPACE LOT 127

OPEN SPACE LOT 128

OPEN SPACE LOT 129

OPEN SPACE LOT 130

OPEN SPACE LOT 127

OPEN SPACE LOT 128

OPEN SPACE LOT 129

OPEN SPACE LOT 130

OPEN SPACE LOT 127

OPEN SPACE LOT 128

OPEN SPACE LOT 129

OPEN SPACE LOT 130

OPEN SPACE LOT 127

OPEN SPACE LOT 128

OPEN SPACE LOT 129

OPEN SPACE LOT 130

OPEN SPACE LOT 127

OPEN SPACE LOT 128

OPEN SPACE LOT 129

OPEN SPACE LOT 130

OPEN SPACE LOT 127

OPEN SPACE LOT 128

OPEN SPACE LOT 129

OPEN SPACE LOT 130

OPEN SPACE LOT 127

OPEN SPACE LOT 128

OPEN SPACE LOT 129

OPEN SPACE LOT 130

OPEN SPACE LOT 127

OPEN SPACE LOT 128

OPEN SPACE LOT 129

OPEN SPACE LOT 130

OPEN SPACE LOT 127

OPEN SPACE LOT 128

OPEN SPACE LOT 129

OPEN SPACE LOT 130

OPEN SPACE LOT 127

OPEN SPACE LOT 128

OPEN SPACE LOT 129

OPEN SPACE LOT 130

OPEN SPACE LOT 127

OPEN SPACE LOT 128

OPEN SPACE LOT 129

OPEN SPACE LOT 130

OPEN SPACE LOT 127

OPEN SPACE LOT 128

OPEN SPACE LOT 129

OPEN SPACE LOT 130

OPEN SPACE LOT 127

OPEN SPACE LOT 128

OPEN SPACE LOT 129

OPEN SPACE LOT 130

OPEN SPACE LOT 127

OPEN SPACE LOT 128

OPEN SPACE LOT 129

OPEN SPACE LOT 130

OPEN SPACE LOT 127

OPEN SPACE LOT 128

OPEN SPACE LOT 129

OPEN SPACE LOT 130

OPEN SPACE LOT 127

OPEN SPACE LOT 128

OPEN SPACE LOT 129

OPEN SPACE LOT 130

OPEN SPACE LOT 127

OPEN SPACE LOT 128

OPEN SPACE LOT 129

OPEN SPACE LOT 130

OPEN SPACE LOT 127

OPEN SPACE LOT 128

OPEN SPACE LOT 129

OPEN SPACE LOT 130

OPEN SPACE LOT 127

OPEN SPACE LOT 128

OPEN SPACE LOT 129

OPEN SPACE LOT 130

OPEN SPACE LOT 127

OPEN SPACE LOT 128

OPEN SPACE LOT 129

OPEN SPACE LOT 130

OPEN SPACE LOT 127

OPEN SPACE LOT 128

OPEN SPACE LOT 129

OPEN SPACE LOT 130

OPEN SPACE LOT 127

OPEN SPACE LOT 128

OPEN SPACE LOT 129

OPEN SPACE LOT 130

OPEN SPACE LOT 127

OPEN SPACE LOT 128

OPEN SPACE LOT 129

OPEN SPACE LOT 130

OPEN SPACE LOT 127

OPEN SPACE LOT 128

OPEN SPACE LOT 129

OPEN SPACE LOT 130

OPEN SPACE LOT 127

OPEN SPACE LOT 128

OPEN SPACE LOT 129

OPEN SPACE LOT 130

OPEN SPACE LOT 127

OPEN SPACE LOT 128

OPEN SPACE LOT 129

OPEN SPACE LOT 130

OPEN SPACE LOT 127

OPEN SPACE LOT 128

OPEN SPACE LOT 129

OPEN SPACE LOT 130

OPEN SPACE LOT 127

OPEN SPACE LOT 128

OPEN SPACE LOT 129

OPEN SPACE LOT 130

OPEN SPACE LOT 127

OPEN SPACE LOT 128

OPEN SPACE LOT 129

OPEN SPACE LOT 130

OPEN SPACE LOT 127

OPEN SPACE LOT 128

OPEN SPACE LOT 129

OPEN SPACE LOT 130

OPEN SPACE LOT 127

OPEN SPACE LOT 128

OPEN SPACE LOT 129

OPEN SPACE LOT 130

OPEN SPACE LOT 127

OPEN SPACE LOT 128

OPEN SPACE LOT 129

OPEN SPACE LOT 130

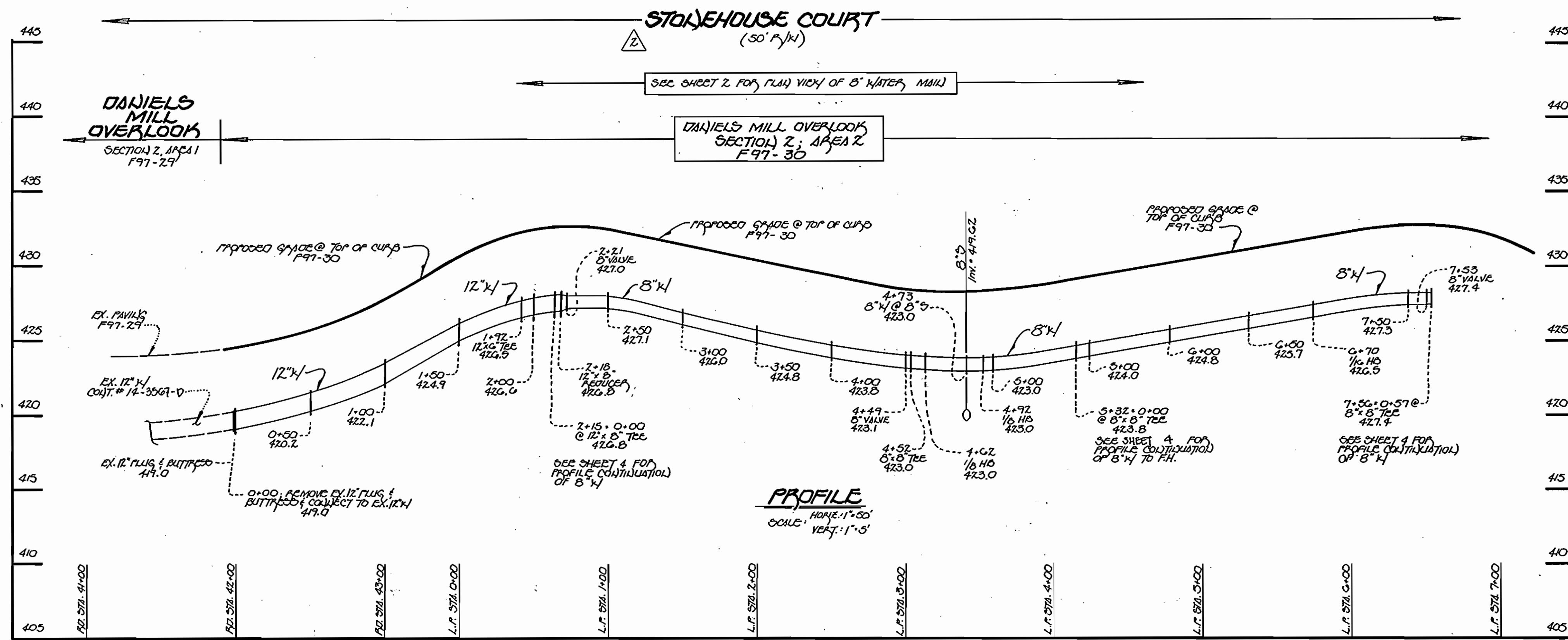
OPEN SPACE LOT 127

OPEN SPACE LOT 128

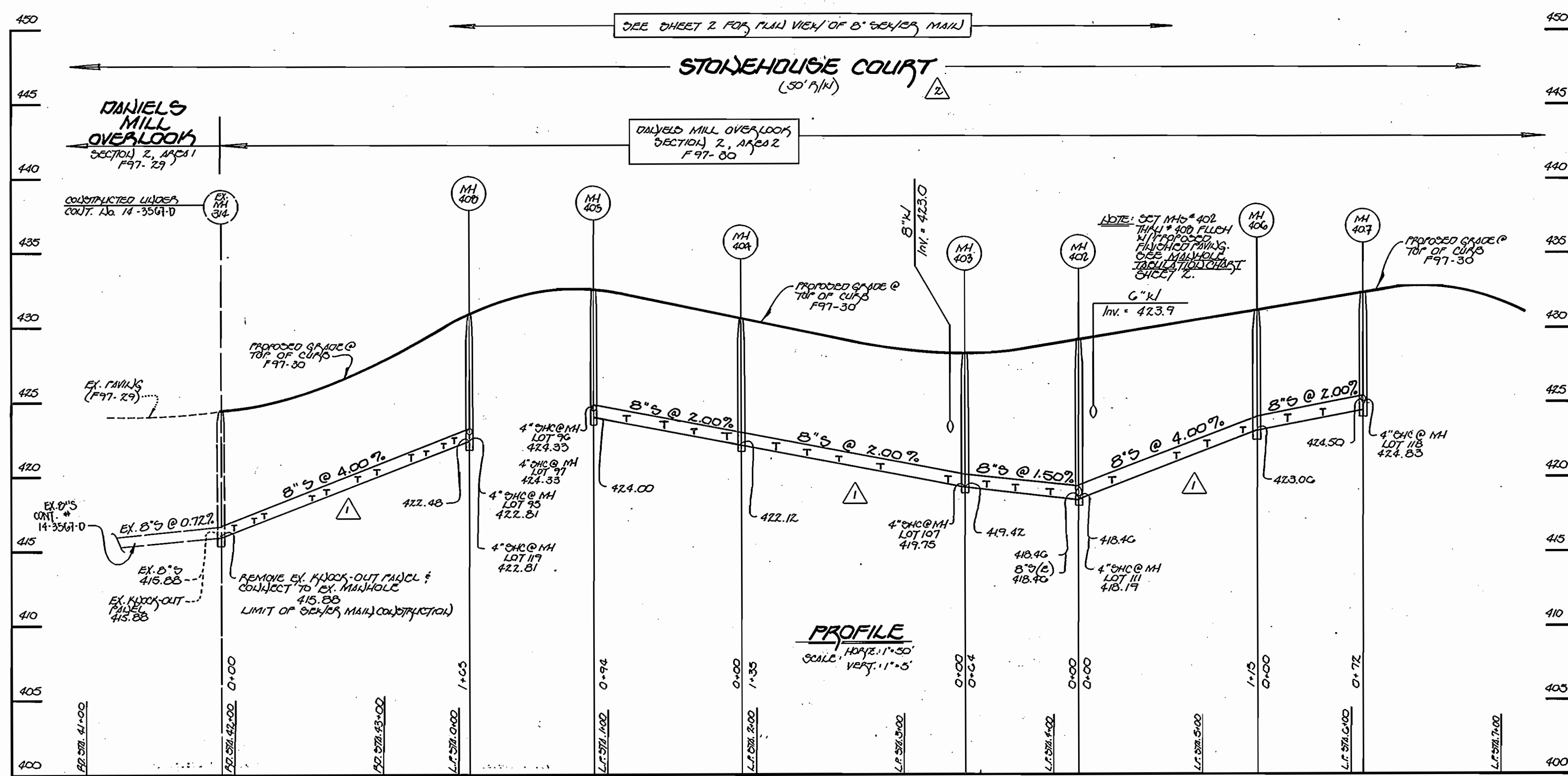
OPEN SPACE LOT 129

OPEN SPACE LOT 130

OPEN SPACE LOT 127



8-INCH WATER MAIN: STONEHOUSE COURT



8-INCH SEWER MAIN: STONEHOUSE COURT

NOTE: THE LENGTH OF OPEN TRENCH IS LIMITED TO THREE (3) PIPE LENGTHS OR THAT WHICH SHALL BE BACKFILLED AND STABILIZED IN ONE WORKING DAY, WHICHEVER IS GREATER.

DEPARTMENT OF PUBLIC WORKS
HOWARD COUNTY, MARYLAND
Michael S. Swannell, P. Eng. 2/13/97
CHIEF, BUREAU OF UTILITIES

DEPARTMENT OF PLANNING AND ZONING
HOWARD COUNTY, MARYLAND
[Signature] 2/13/97
CHIEF, DEVELOPMENT ENGINEERING DIVISION

Fisher, Collins & Carter, Inc.
CIVIL ENGINEERING CONSULTANTS &
LAND SURVEYORS
CENTENNIAL SQUARE OFFICE PARK
10272 Baltimore National Pike
Billets City, Maryland 21042
(410) 461-2855



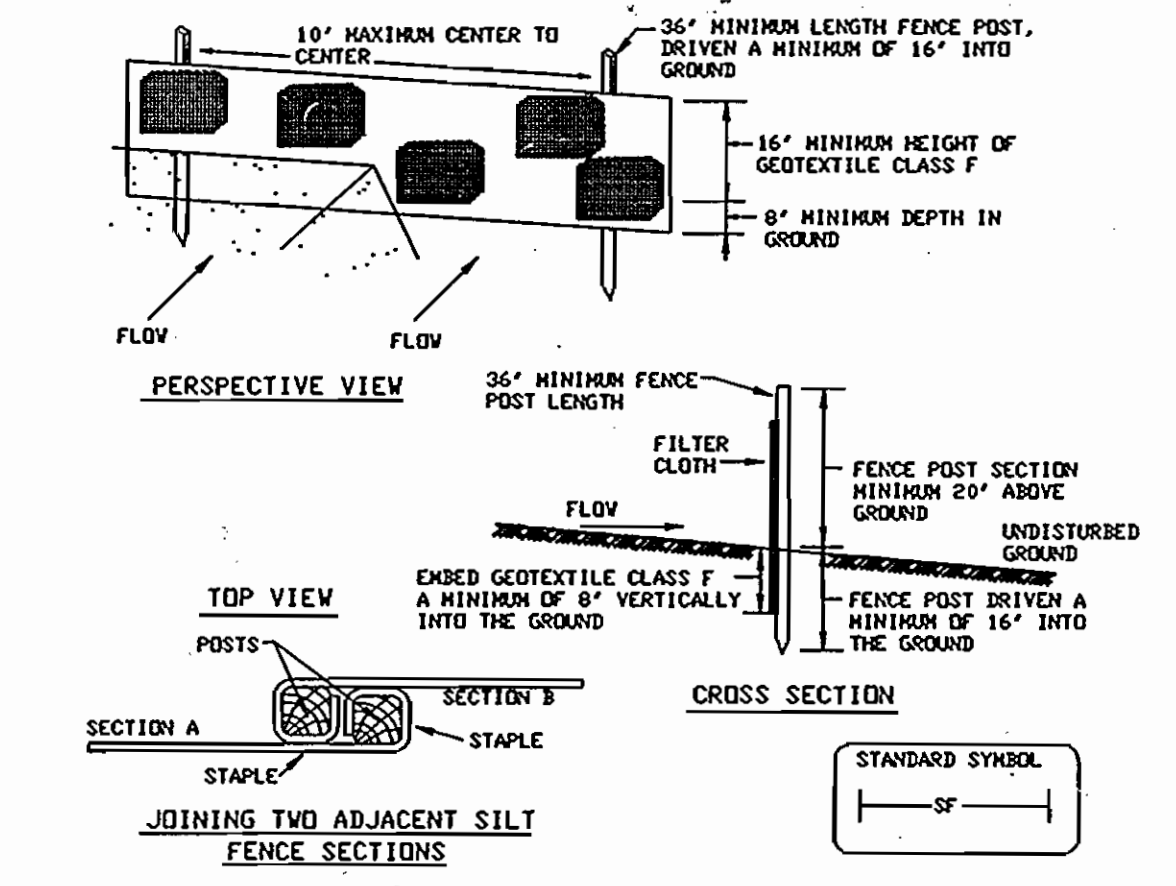
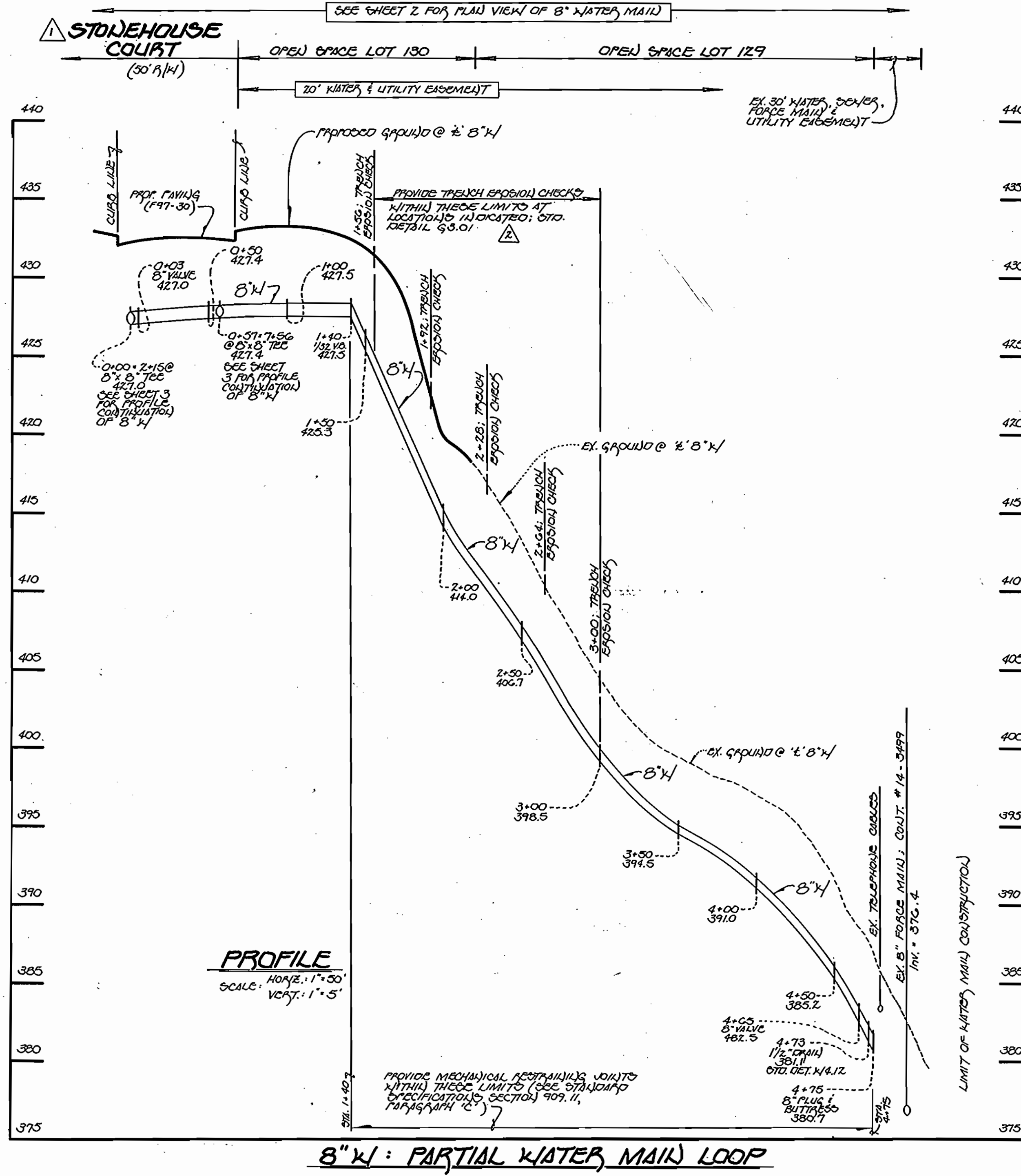
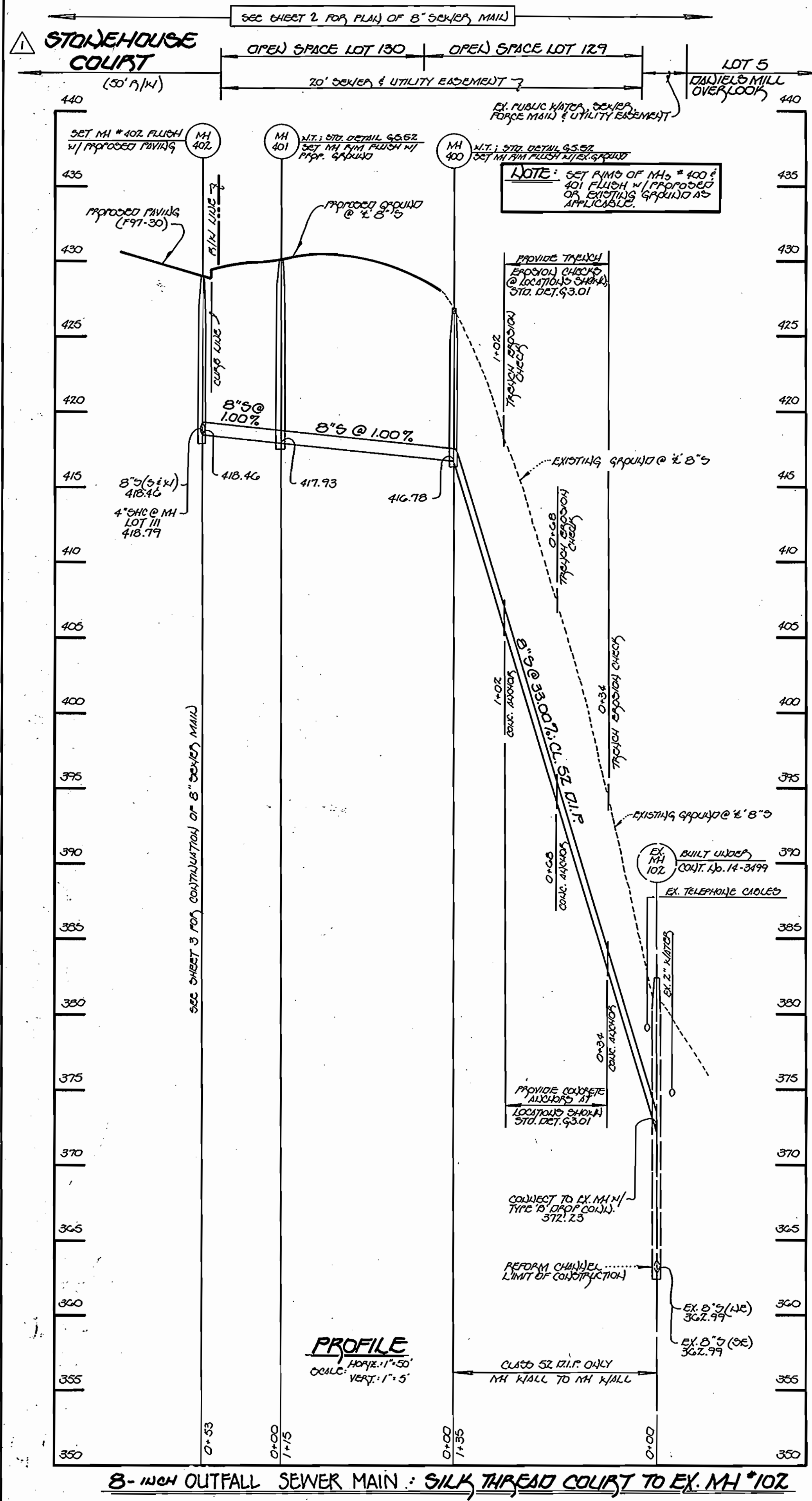
DES:	J.M.H.				
DRWN:	J.M.H.				
CHK:	P.W.K.	F.C.C.	REMOVE NAME FROM "DANIELS MILL OVERLOOK"	7/97	
DATE:	1/14/97	F.C.C.	REMOVE LOCATIONS OF CHCS	7/97	
BY:	NO.	REVISION		DATE	

WATER AND SEWER MAINS
PROFILES
600' SCALE MAP NO. 17 BLOCK NO. 12

DANIELS MILL OVERLOOK
SECTION 2, AREA 2
LOT NOS. 85 - 130
CONTRACT NO. 14-3568-D
SECOND ELECTION DISTRICT
HOWARD COUNTY, MARYLAND

SCALE AS SHOWN
SHEET 3 OF 4

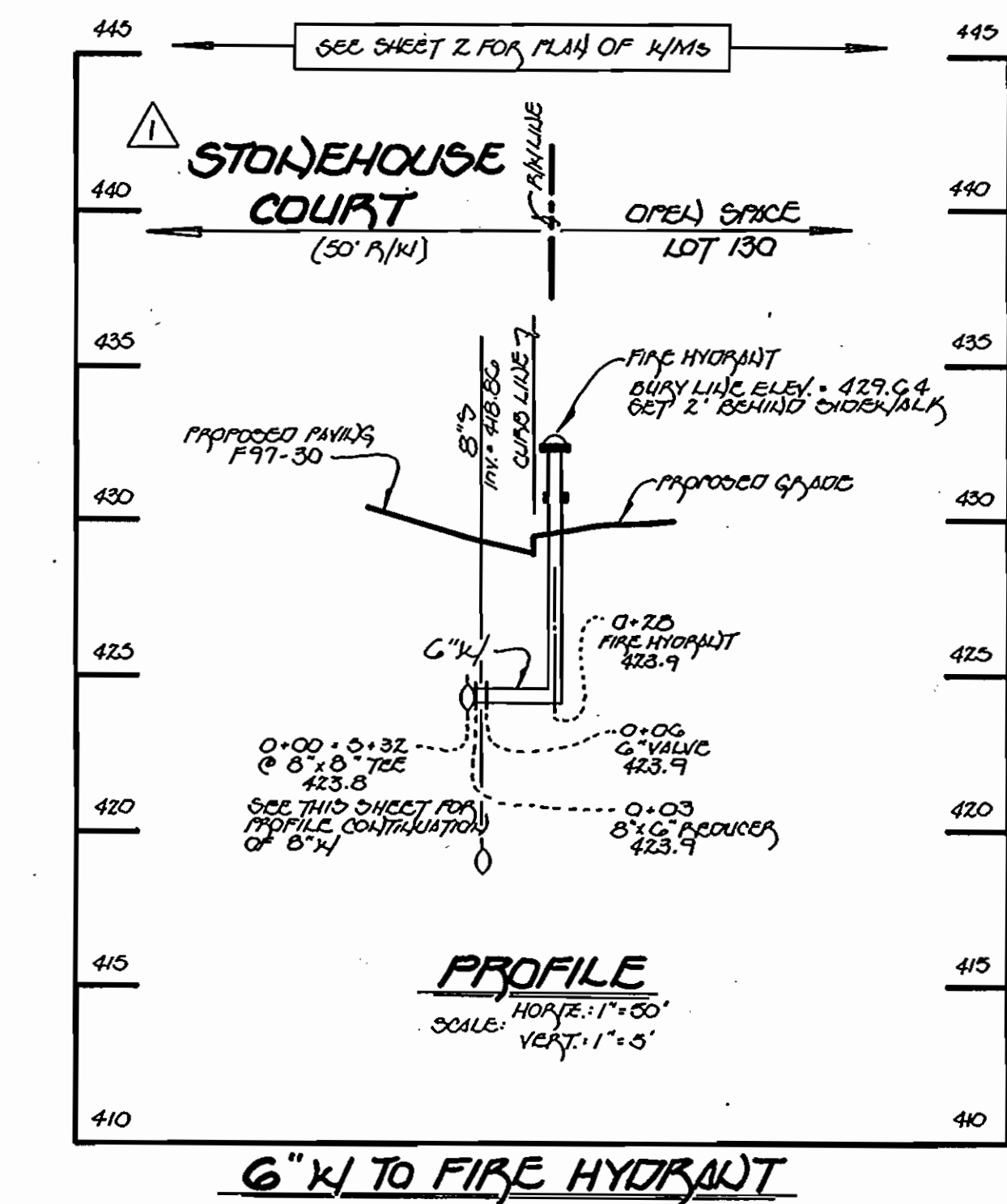
CONTRACT NO. 14-3568-D
DANIELS MILL OVERLOOK
SECTION 2, AREA 2
LOT NOS. 85 - 130
WATER AND SEWER MAIN EXTENSIONS
HOWARD COUNTY, MARYLAND



- Construction Specifications**
- Fence posts shall be a minimum of 36" long driven 16" minimum into the ground. Wood posts shall be 1 1/2" x 1 1/2" square (minimum) cut, or 1 3/4" diameter (minimum) round and shall be of sound quality hardwood. Steel posts will be standard T or U section weighing not less than 1.00 pound per linear foot.
 - Geotextile shall be fastened securely to each fence post with wire ties or staples at top and mid-section and shall meet the following requirements for Geotextile Class F:

Tensile Strength	50 lbs/in (min.)	Test: MSMT 509
Tensile Modulus	20 lbs/in (min.)	Test: MSMT 509
Flow Rate	0.3 gal Ft ² /minute (max.)	Test: MSMT 322
Filtering Efficiency	75% (min.)	Test: MSMT 322
 - Where ends of geotextile fabric come together, they shall be overlapped, folded and stapled to prevent sediment bypass.
 - Silt Fence shall be inspected after each rainfall event and maintained when bulges occur or when sediment accumulation reached 50% of the fabric height.

NOTE: THE LENGTH OF OPEN TRENCH IS LIMITED TO THREE (3) TIME LENGTH OF THAT WHICH SHALL BE BACKFILLED & STABILIZED IN ONE WORKING DAY, WHICHEVER IS SHORTER.



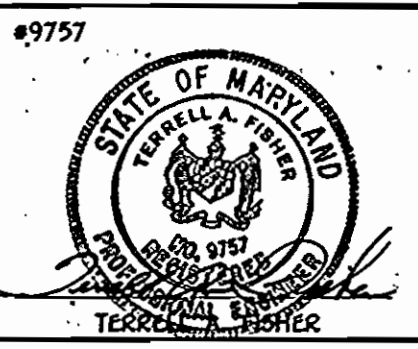
DEPARTMENT OF PUBLIC WORKS
HOWARD COUNTY, MARYLAND

Michael A. Burchinal
CHIEF, BUREAU OF UTILITIES

DEPARTMENT OF PLANNING AND ZONING
HOWARD COUNTY, MARYLAND

John C. ...
CHIEF, DEVELOPMENT ENGINEERING DIVISION

Fisher, Collins & Carter, Inc.
CIVIL ENGINEERING CONSULTANTS &
LAND SURVEYORS
CENTENNIAL SQUARE OFFICE PARK
10272 Baltimore National Pike
Ellicott City, Maryland 21042
(410) 461-2856



DES: H.J.M.			
DRWN: J.M.M.			
CHK: P.M.K.			
DATE: 11/14/97			
ACC. <input checked="" type="checkbox"/>	DELETE OLD ANCHORS FROM OBSTRUCTION OF 4/11	8/97	
E.C.C. <input checked="" type="checkbox"/>	REMOVE PD. NAME FROM 'SILK THREAD' TO 'SILK THREAD COURT'	7/97	
BY NO.	REVISION	DATE	

PROFILES AND DETAILS

600' SCALE MAP NO. 17 BLOCK NO. 12

DANIELS MILL OVERLOOK
SECTION 2, AREA 2
LOT NOS. 85-130
CONTRACT NO. 14-3568-D
SECOND ELECTION DISTRICT
HOWARD COUNTY, MARYLAND

SCALE AS SHOWN
SHEET 4 OF 4