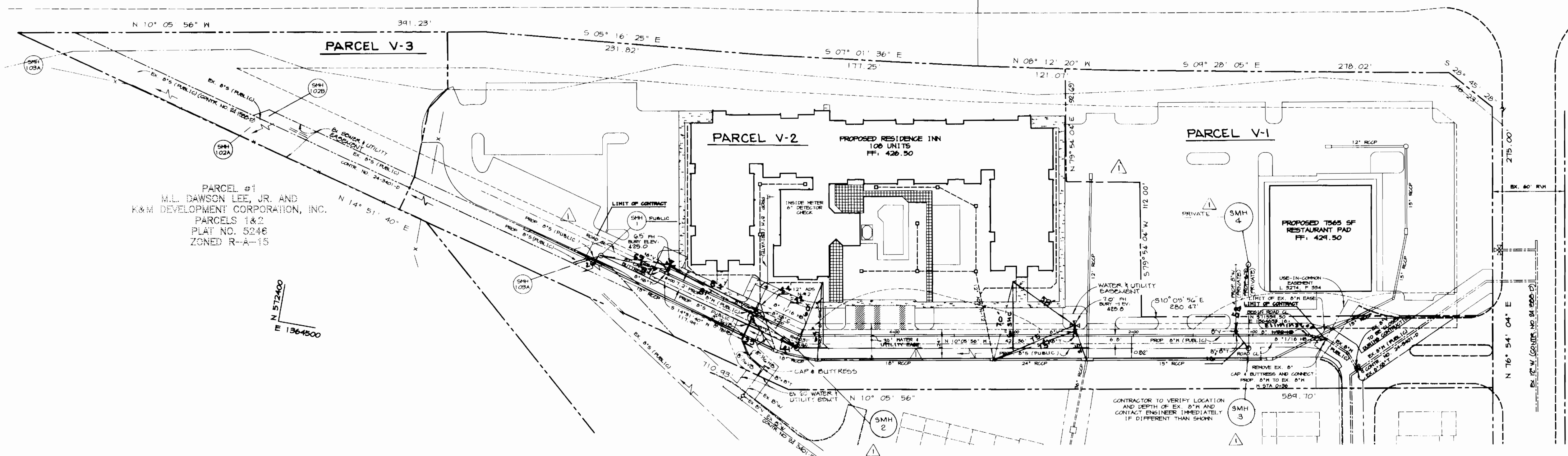


MARYLAND ROUTE 100
A MARYLAND STATE PUBLIC ROAD
(INTERMEDIATE ARTERIAL)



PLAN
SCALE: 1" = 50'

M/F FARMS SECTION 1
SDP-94-71

COLUMBIA 100
OFFICE RESEARCH PARK
SECTION 1, AREA 2
PARCELS G THRU U
PLAT NOS. 7524 THRU 7528
ZONED POR

EXECUTIVE PARK DRIVE
A HOWARD COUNTY PUBLIC ROAD
(MAJOR COLLECTOR)

GENERAL NOTES

- Approximate location of existing mains are shown. The contractor shall take all necessary precautions to protect existing mains and services and maintain uninterrupted supply. Any damage incurred shall be repaired immediately to the satisfaction of the engineer at the contractor's expense.
- All horizontal controls are based on Maryland State Coordinates.
- All vertical controls are based on U.S.G.S. data.
- All pipe elevations shown are invert elevations.
- Clear all utilities by a minimum of 6'. Clear all poles by 2'-0" minimum or tunnel as required. The owner has contacted the utility companies and has made arrangements for bracing of poles as shown on the drawings. In the event the contractor's work requires the bracing of additional poles, any cost incurred by the owner for bracing of additional poles or damages shall be deducted from money owed the contractor. The contractor shall coordinate with the utility companies to schedule the bracing of the poles.
- For details not shown on the drawings, and for materials and construction methods use Howard County Design Manual, Volume V, Standard Specifications and Detail for Construction, (latest Edition). The contractor shall have a copy of Volume IV on the job.
- Where test pits have been made on existing utilities, they are noted by the symbol at the location of the test pit. A note or notes containing the results of the test pit or pits is included on the drawings. Existing utilities in the vicinity of the proposed work for which test pits have not been dug shall be located by the contractor two weeks in advance of construction operations at his own expense.
- Contractor shall notify the following utility companies or agencies at least five working days before starting work shown on these plans:
State Highway Administration 531-5533
Baltimore Gas & Electric Co. Contractor Services 850-4620
Baltimore Gas & Electric Co. Underground Damage Control 867-8088
Miss Utility 1-800-257-7777
Colonial Pipeline Co. 720-3300
Bureau of Utilities, Howard County Department of Public Works 313-4900
- Trees and shrubs are to be protected from damage to maximum extent. Trees and shrubs located within the construction strip are not to be removed or damaged by the contractor.
- Contractor shall remove trees, stumps and roots along line of excavation. Payment for such removal shall be included in the unit price bid for construction of the main.
- All water mains to be D.I.P. Class 52 unless otherwise noted.
- Tops of all water mains to have a minimum of 3 1/2" cover unless otherwise noted.
- Valves adjacent to trees shall be strapped to trees.
- All fittings shall be buttressed or anchored with concrete in accordance with the Standard Details unless otherwise provided for on the drawings.
- Fire hydrants shall be set to the bury line elevations shown on the drawings. All fire hydrants shall be restrained and buttressed with concrete in accordance with Standard Detail. Soil around the fire hydrant shall be compacted in accordance with Section 1000 and 100B of the Standard Specifications.
- The contractor shall not operate any water main valves on the existing water system.
- All water house connections shall be for inside meter setting unless otherwise noted on drawings or in specifications.
- All sewer mains shall be D.I.P. and P.V.C. unless otherwise noted.
- All manholes shall be 4'-0" inside diameter unless otherwise noted.
- Force mains shall be D.I.P. only.
- Manholes shown with 12" and 16" walls are for brick manholes only.
- Manholes designated W.T. in plan and profile shall have watertight frame and covers, Standard Detail 05.52. Where watertight manhole frame and cover is used, set top of frame 1'-6" above finished grade unless otherwise noted on the drawings.
- House(s) with the symbol "C.N.S." indicates that cellar cannot be served.
- Manholes can be either brick or precast concrete structures.
- Contractor is solely responsible for construction means, methods, techniques, sequences, procedures, and safety precautions and programs.
- The fire hydrant shall be installed as per standard detail W.1.11.
- Fire hydrants will be located 1' FROM HACK OR CURB unless otherwise noted.
- For sprinkler systems, all townhomes or multi-family dwelling units should have a minimum of 1" connection with a 3/4" meter.
- The contractor shall notify the Bureau of Highways, Howard County, at (410) 313-7450 at least five (5) working days before any open cut or any County road or boring/jacking operation in County roads for laying water/sewer mains or house connections. The approval of these drawings will constitute compliance with DOW requirements per Section 18.11(c) of the Howard County Code.

QUANTITIES

ITEMS	QUANTITIES ESTIMATED	AS-BUILT		MANUFACTURER/SUPPLIER
		QUANTITIES	TYPE	
8" WATER	698 LF	600 LF	DIP CL 52	Griffin Pipe/ BRS Inc.
6" WATER	14 LF	15 LF	DIP CL 52	Griffin Pipe/ BRS Inc.
FIRE HYDRANTS	2 EA.	2 EA.	SUBSTATION	Mueller/ BRS Inc.
8" VALVES	4 EA.	4 EA.	Resilient Seat OR	Mueller/ BRS Inc.
6" VALVES	2 EA.	2 EA.	Resilient Seat OR	Mueller/ BRS Inc.
1/16 HB	2 EA.	4 EA.	M.J. DIP	Griffin Pipe/ BRS Inc.
1/32 HB	1 EA.	—	M.J. DIP	Griffin Pipe/ BRS Inc.
8"X8" T	2 EA.	2 EA.	M.J. DIP	Griffin Pipe/ BRS Inc.
8"X6" T	2 EA.	2 EA.	M.J. DIP	Griffin Pipe/ BRS Inc.
8" SEWER	610 LF	21 LF	PVC SDR 35	J.M. Manufacturing/ BRS Inc.
8" SC	1 EA.	1 EA.	M.J. DIP	Griffin Pipe/ BRS Inc.

NAME OF UTILITY CONTRACTOR: **CHESAPEAKE CONTRACTORS INC.**

Sediment control measures for this contract will be implemented in accordance with Section 219 of the Specifications and as shown on SDP-97-02

CHECKBOX
AS-BUILT DATE: **8-21-97**

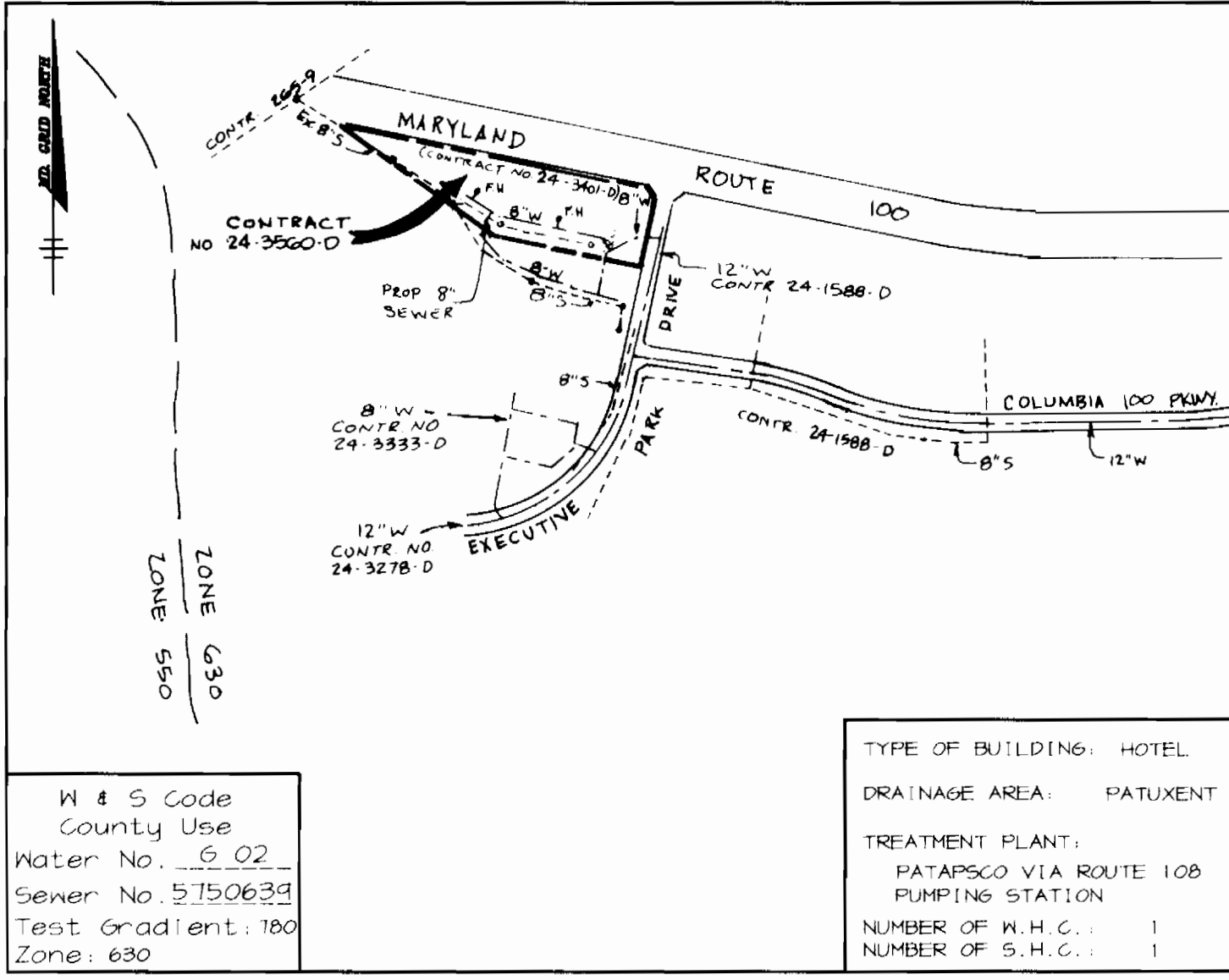
SURVEY AND DRAFTING DIVISION

Review for Howard Soil Conservation District and meets technical requirements.

J.H. Washburn 8/20/97
NATURAL RESOURCES CONSERVATION SERVICE DATE

This plan is approved for soil erosion and sediment control by the Howard Soil Conservation District.

John K. Robertson 8/20/97
HOWARD SOIL CONSERVATION DISTRICT DATE



VICINITY MAP
SCALE: 1" = 600'

DEPARTMENT OF PUBLIC WORKS
HOWARD COUNTY, MARYLAND

John E. Wooten 8/15/96
CHIEF, BUREAU OF UTILITIES DATE

DEPARTMENT OF PLANNING & ZONING
HOWARD COUNTY, MARYLAND

H. [Signature] 8/15/96
CHIEF, DEVELOPMENT ENGINEERING DIVISION DATE

RIEMER MUEGGE & ASSOCIATES, INC.
ENGINEERING & ENVIRONMENTAL SERVICES & PLANNING & SURVEYING
8818 Centre Park Drive, Columbia, Maryland 21045
tel 410.997.8900 fax 410.997.9282
800.698.1100 RSL/DKG

J. Lavell
JAYKANT D. PAREKH #19148

DES: CJR
DRN: BLW
CHK:
DATE: 8-6-96
BY: RJC

EXPANDED WATER, SEWER & UTILITY ESMT FROM 20' TO 30'.
CHANGED PRIVATE 8" TO PUBLIC, REV QUANT. BOOK

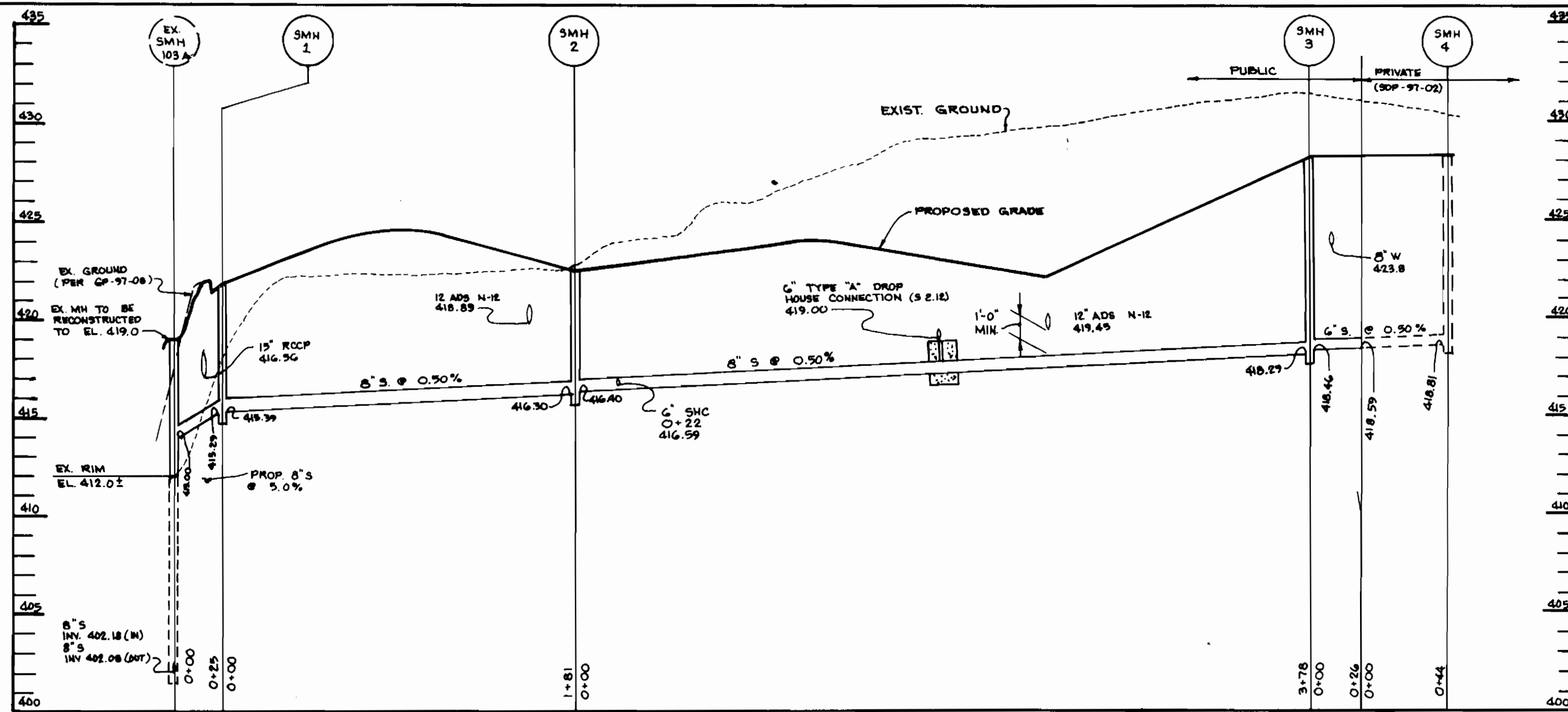
REVISION

600' SCALE MAP NO. 30 BLOCK NO. 12

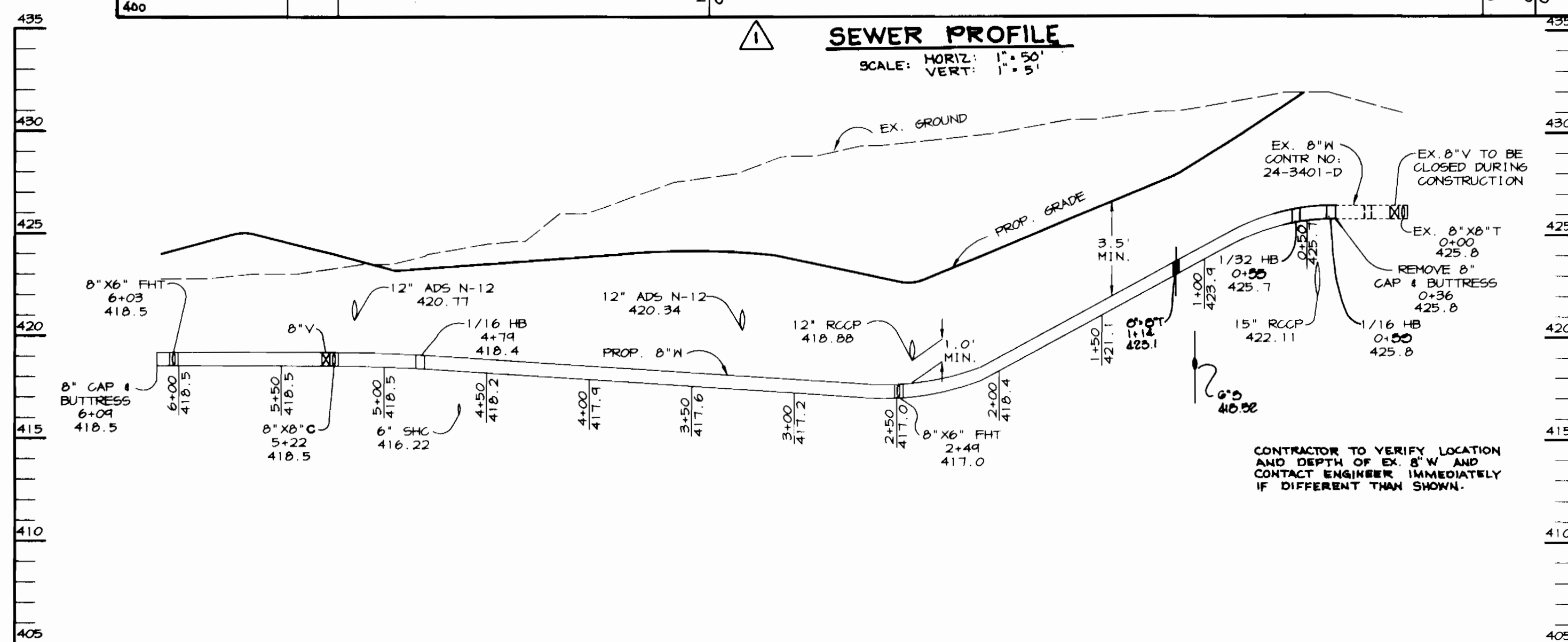
PLAN OF WATER
AND SEWER MAINS

COLUMBIA 100 OFFICE RESEARCH PARK
SECTION 1-AREA 2- PARCEL V
2nd ELECTION DISTRICT
HOWARD COUNTY, MARYLAND
CONTRACT 24-3560-D

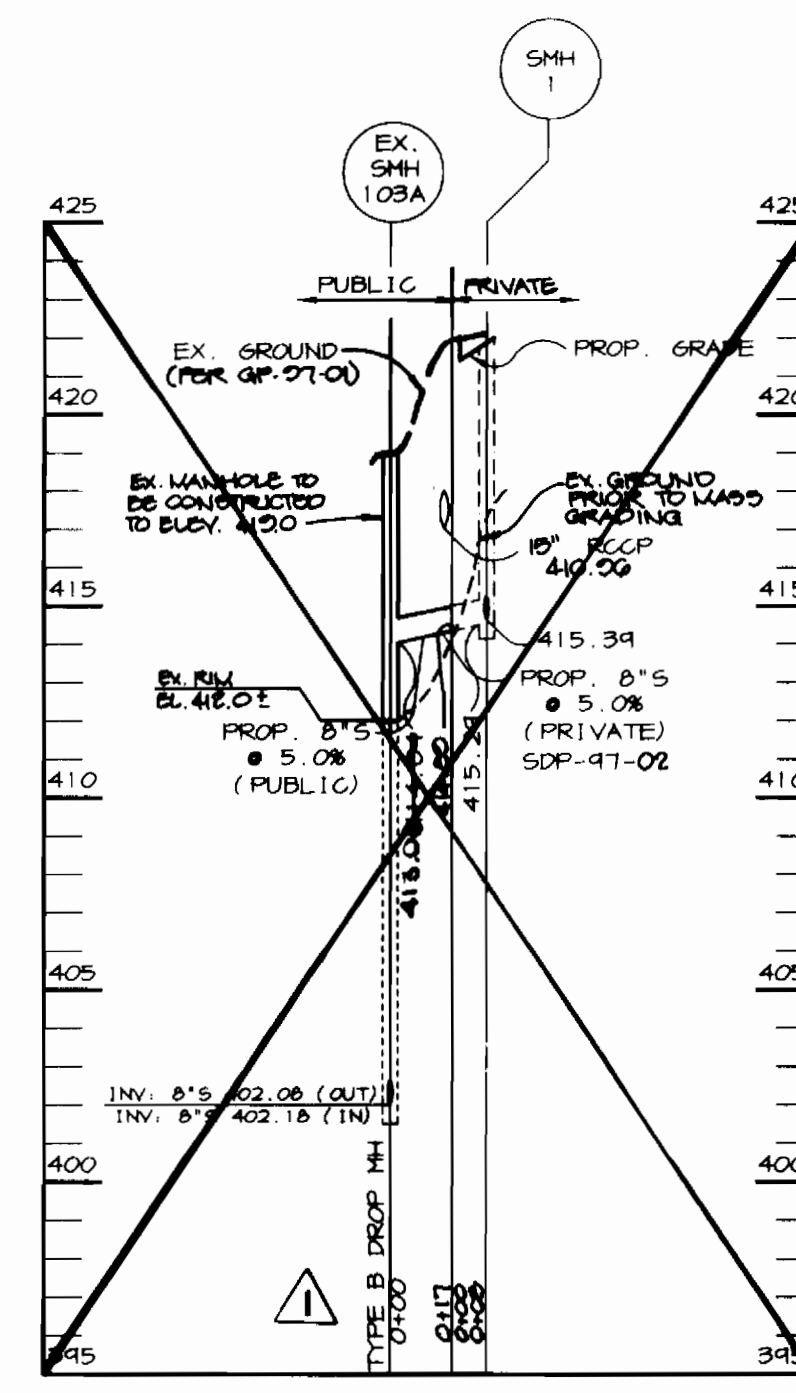
SCALE AS SHOWN
SHEET 1 OF 2



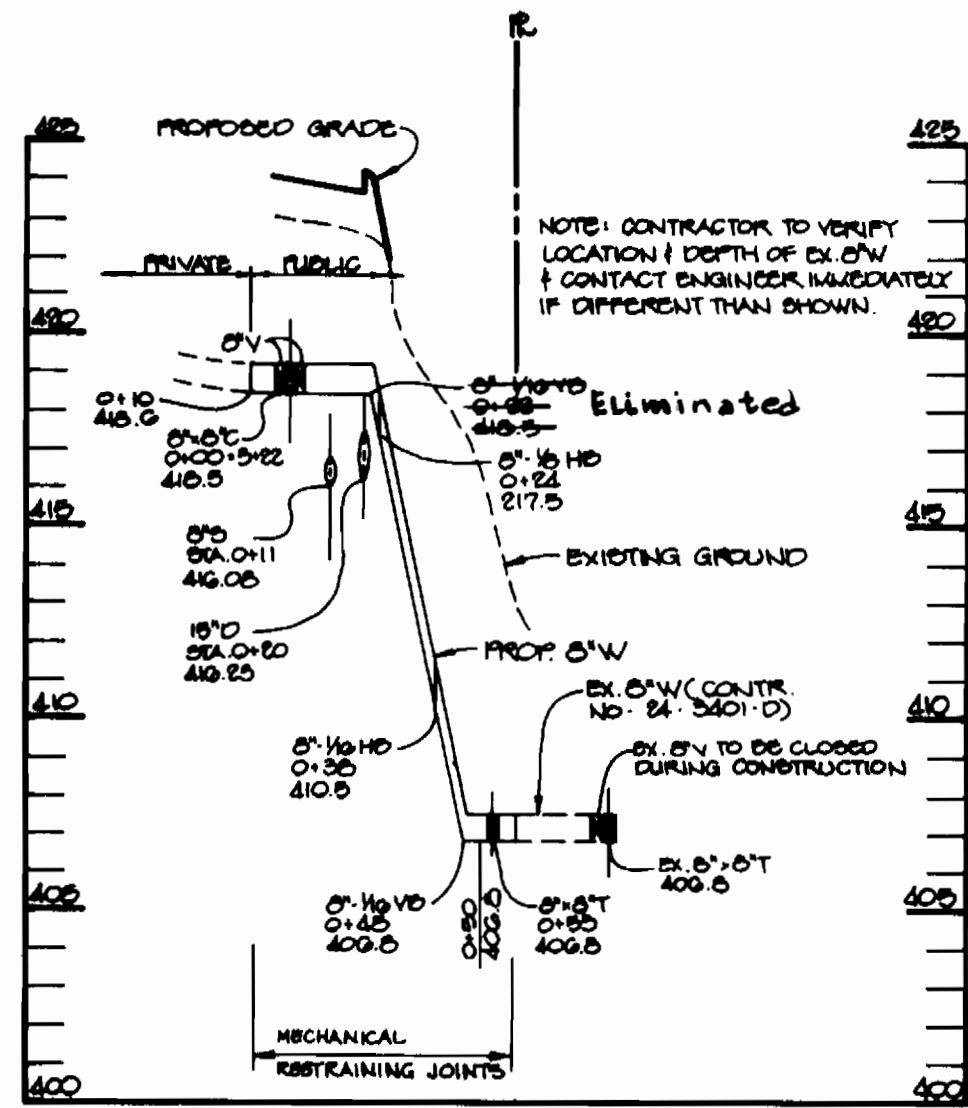
SEWER PROFILE
SCALE: HORIZ: 1"=50'
VERT: 1"=5'



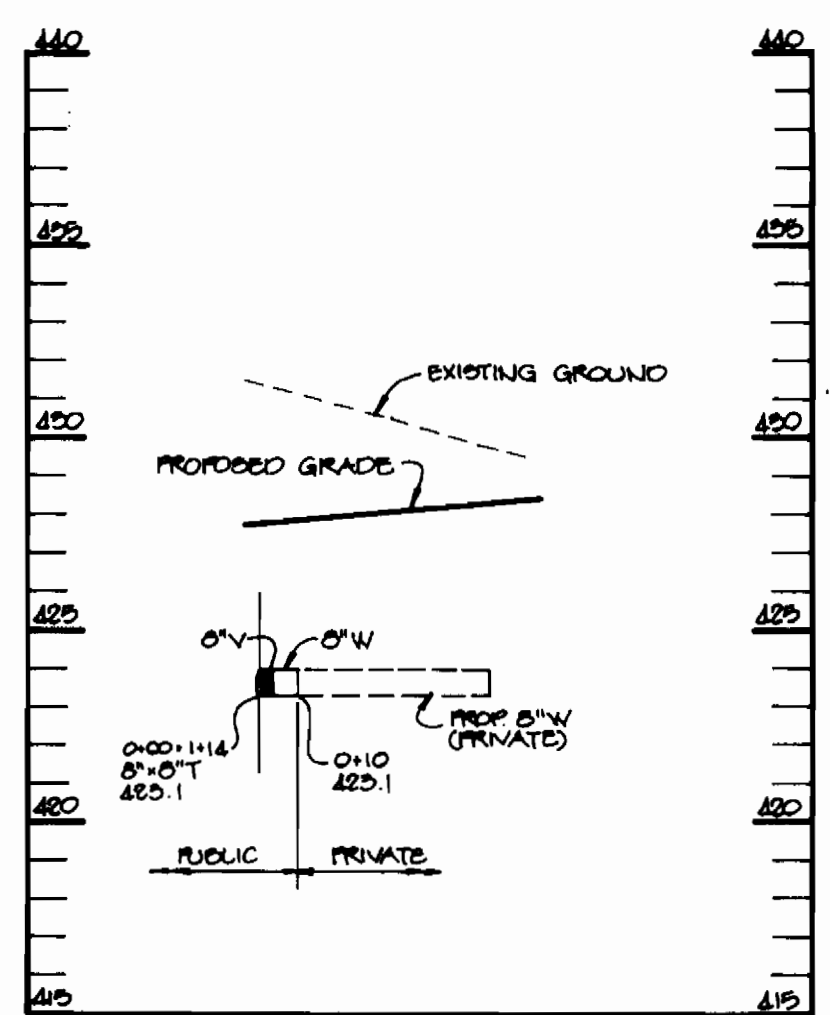
WATER PROFILE
SCALE: HORIZ: 1"=50'
VERT: 1"=5'



SEWER PROFILE
SCALE: HORIZ: 1"=50'
VERT: 1"=5'



WATER PROFILE
SCALE: HORIZ: 1"=50'
VERT: 1"=5'



WATER PROFILE
SCALE: HORIZ: 1"=50'
VERT: 1"=5'

DEPARTMENT OF PUBLIC WORKS
HOWARD COUNTY, MARYLAND

DEPARTMENT OF PLANNING & ZONING
HOWARD COUNTY, MARYLAND

RIEMER MUEGGE & ASSOCIATES, INC.
ENGINEERING • ENVIRONMENTAL SERVICES • PLANNING • SURVEYING
8818 Centre Park Drive, Columbia, Maryland 21045
tel 410.997.8900 fax 410.997.9282
8000/9881100 WBS.DWG

J. Savelle
JAYKANT D. PAREKH # 19148

DES: GJR
DRN: BLW
CHK:
DATE: 8-6-99

PROFILES OF WATER
AND SEWER MAINS

COLUMBIA 100 OFFICE RESEARCH PARK
SECTION 1- AREA 2- PARCEL V
2nd ELECTION DISTRICT
HOWARD COUNTY, MARYLAND
CONTRACT 24-3560-D

SCALE AS SHOWN
SHEET 2 OF 2

John P. Wilty R. Lomb 8/16/99
BUREAU OF UTILITIES DATE

Chief, Development Engineering Division DATE

RJC
BY NO. REVISION DATE

DELETED SMALL SEWER PROFILE (103A TO 4)
ADDED SEWER PROFILE 103A TO PROP SMH 4
3-17-98

600' SCALE MAP NO. 30 BLOCK NO. 12