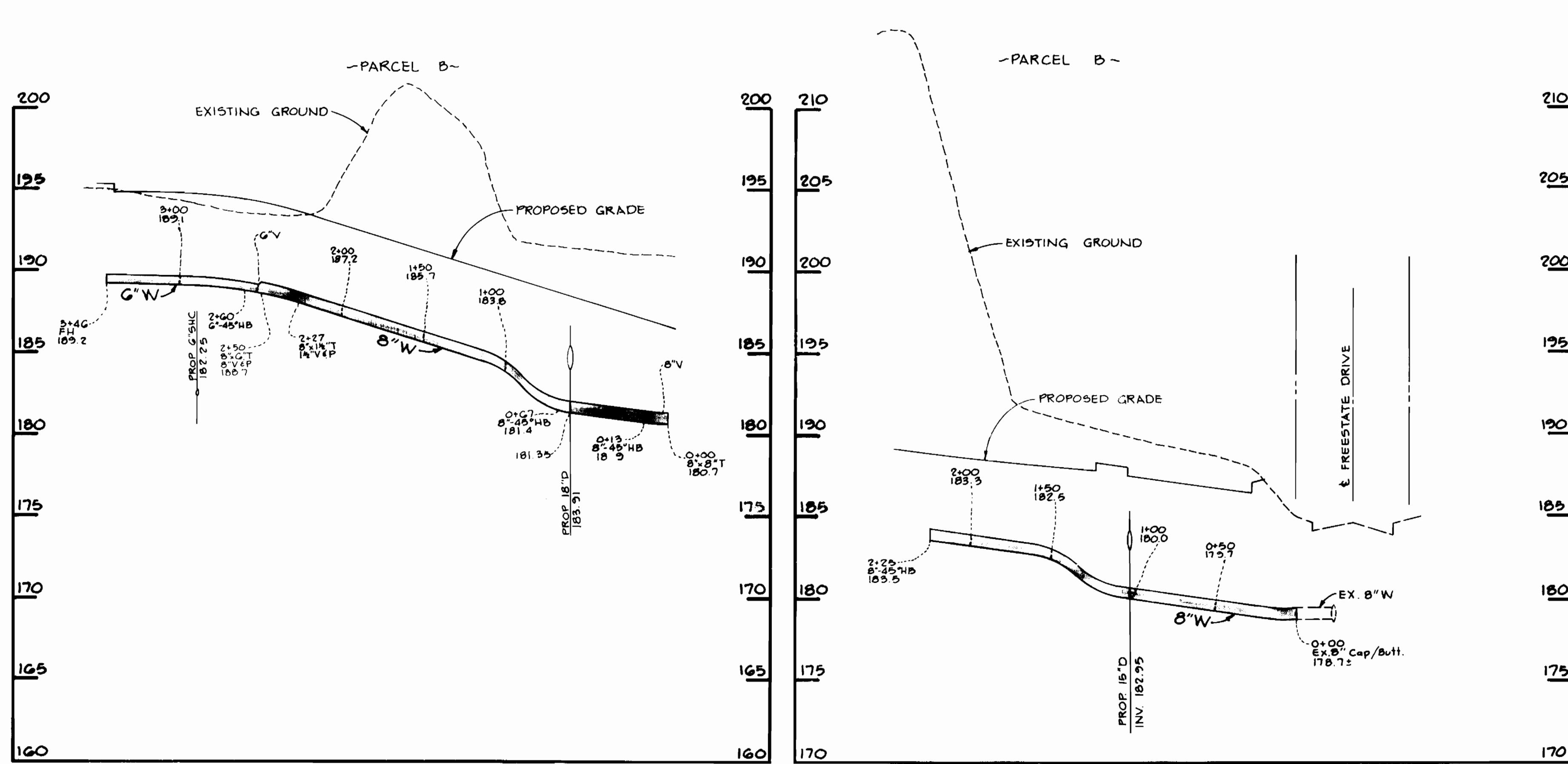






3559 1/5 PART OF PARCEL B

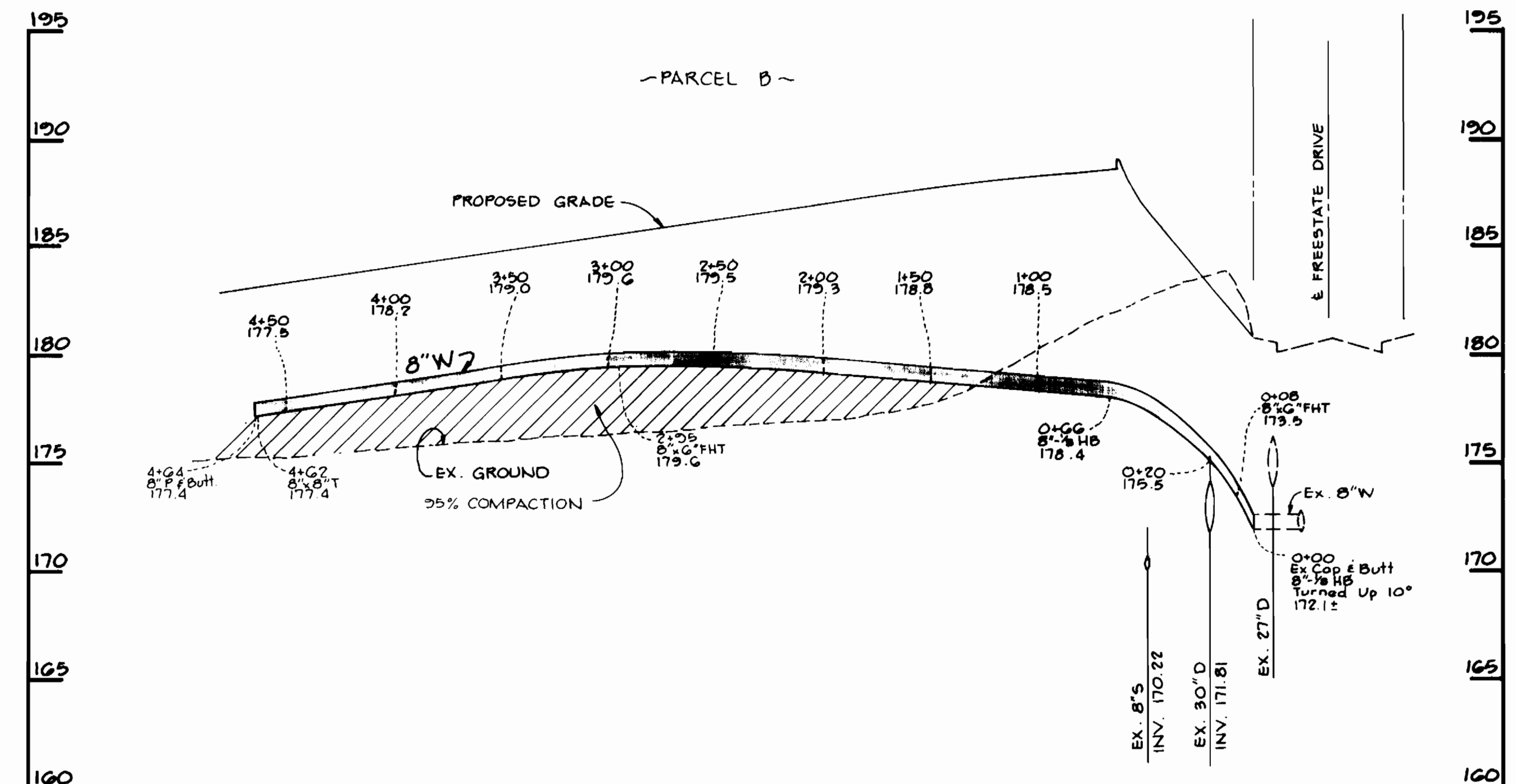


**WATER LINE 'D' PROFILE**

SCALE: H:1"=50'  
V:1"=5'

**WATER LINE 'C' PROFILE**

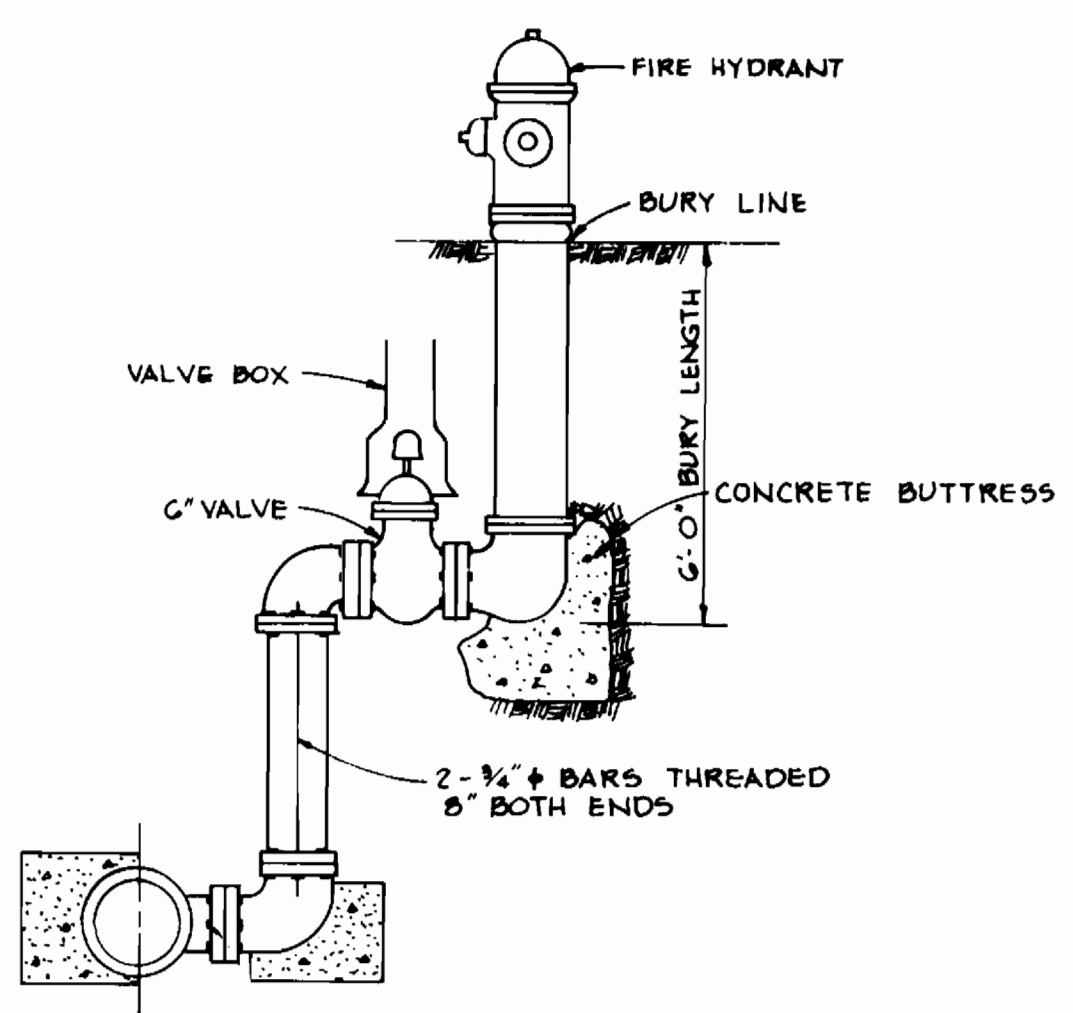
SCALE: H:1"=50'  
V:1"=5'



**WATER LINE 'A' PROFILE**

SCALE: HOR:1"=50'  
VERT:1"=5'

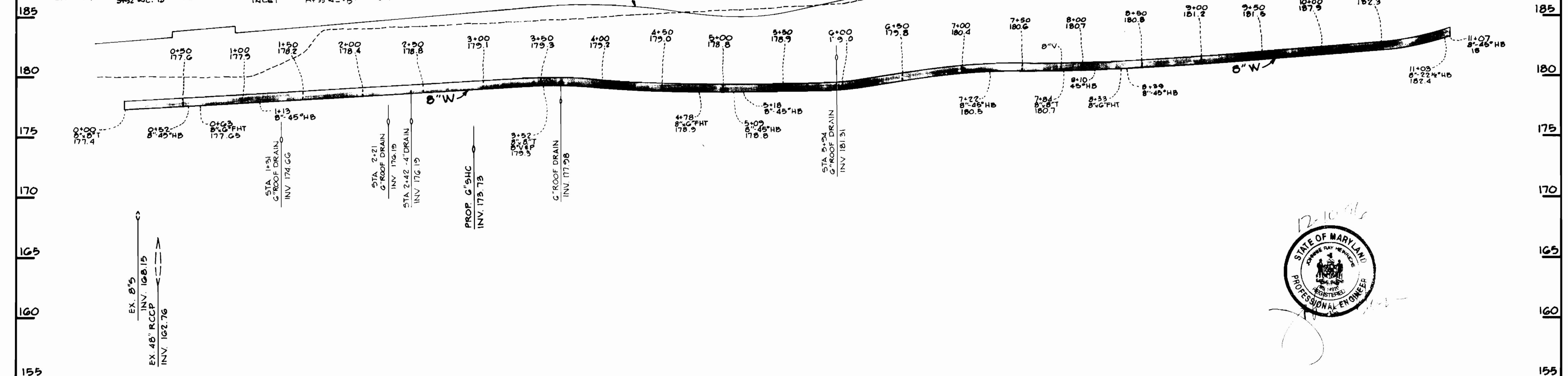
FROM:	TO:	DIST:	FROM:	TO:	DIST:
4" FHV STA. 2+11.0	FH STA. 4+18	4'	FH STA. 4+18	8" V. STA. 3+5.2	12.2'
4" FHV STA. 2+31.0	1/2" METER VAULT	7'	FH STA. 4+18	8" FHV	1.1'
4" FHV STA. 2+31.0	EX. 8" V. STA. 1+15.0	15'	4" FHV STA. 4+18	EX. 8" V. STA. 1+15.0	1.1'
4" FHV STA. 2+31.0	FH	35'	8" V. STA. 1+15.0	8" V. STA. 1+15.0	0'
4" FHV STA. 2+31.0	FH	7'	FH STA. 8+33	8" V. STA. 1+15.0	0'
4" FHV STA. 2+31.0	EX. 8" V. STA. 1+15.0	142'	FH STA. 8+33	8" V. STA. 1+15.0	0'
EX. 8" V. STA. 1+15.0	8" FHV STA. 0+15	50'	STORM DE. INLET	8" V. STA. 1+15.0	0'
4" FHV STA. 2+31.0	8" V. STA. 1+15.0	16'	STORM DE. INLET	8" V. STA. 1+15.0	0'
EX. 8" V. STA. 1+15.0	8" V. STA. 1+15.0	78'	STORM DE. INLET	8" V. STA. 1+15.0	0'



- SPECIAL FIRE HYDRANT SETTING SHALL BE USED IN CASES OF FIRE HYDRANT DEPTH IN EXCESS OF 6' VERTICAL FEET.
- APPLY COAL TAR PROTECTIVE COATING TO ALL EXPOSED STEEL PER AWWA C-203.
- ALL JOINTS NOT STRAPPED SHALL BE RESTRAINED MECHANICAL JOINT.

**SPECIAL FIRE HYDRANT SETTING**

NO SCALE



**WATER LINE 'B' PROFILE**

SCALE: HOR:1"=50'  
VERT:1"=5'



DEPARTMENT OF PUBLIC WORKS HOWARD COUNTY, MARYLAND Robert Benning 1-15-97 CHIEF, BUREAU OF UTILITIES DATE	DEPARTMENT OF PUBLIC WORKS HOWARD COUNTY, MARYLAND [Signature] 1/16/97 CHIEF, DEVELOPMENT ENGINEERING DIVISION DATE	PHOENIX ENGINEERING, INC. CONSULTING ENGINEERS 813 MAIDEN CHOICE LANE BALTIMORE, MARYLAND 21228 (410) 247-8833	DES: R.J.W. DRN: D.R.B. CHK: J.R.H. DATE: 5/96 R.J.W. [Signature] REVISOR NO. DESCRIPTION DATE	PROFILES OF WATER & SEWER MAINS 600' SCALE MAP NO. 47 BLOCK NO. 17	CARMAX THE ASBESTOS OPERATORS FREESTATE P/O PARCEL B ELECTION DISTRICT 6 CONTRACT NO. 44-3559-D	SCALE: AS SHOWN DRAWING NO. 2 OF 2 PROFILES.DWG
--	--	--	---	---	--	---