

WATER AND SEWER EXTENSION LONG GATE CENTER PHASE 2 A COMMERCIAL CENTER CONTRACT NO. 24 - 3558 - D 2nd ELECTION DISTRICT HOWARD COUNTY, MARYLAND

BENCHMARKS
 BM#1 STA 3043001
 ELEV. 437.919
 N 516,549.548 E 853,656.506
 32'+/- NORTH OF BGE TOWER 276-A
 BEHIND SCHOOL GROUNDS

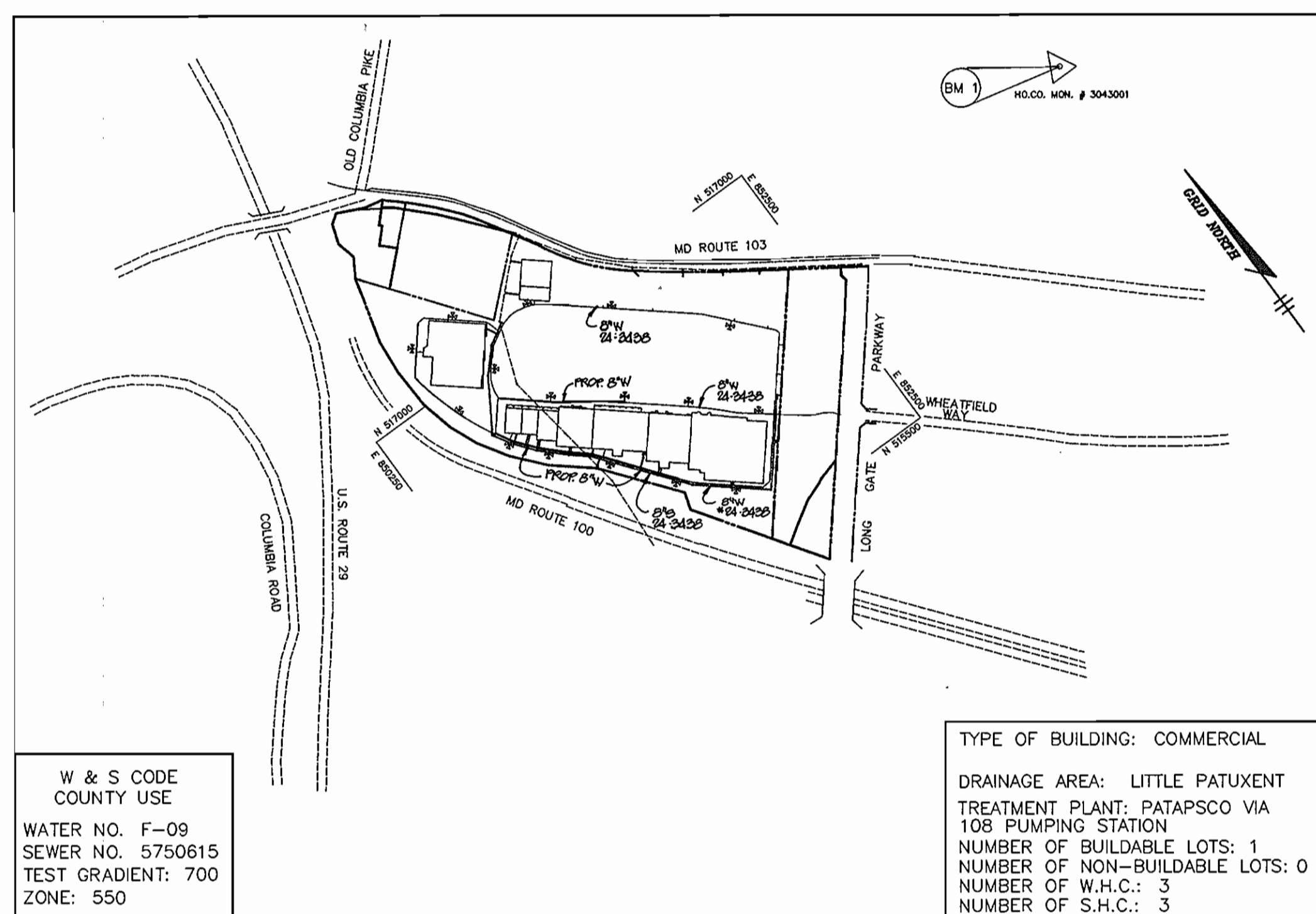
BM#2 STA 2943002
 N 513,205.902 E 857,478.687
 STATION IS LOCATED ON THE TRANSMISSION
 LINE 1700'+/- NORTH OF INTERSECTION
 OF ROUTE 103 AND NEW CUT ROAD AND
 1150'+/- EAST OF NEW CUT ROAD

GENERAL NOTES

1. Approximate location of existing mains are shown. The contractor shall take all necessary precautions to protect existing mains and services and maintain uninterrupted supply. Any damage incurred shall be repaired immediately to the satisfaction of the Engineer at the Contractor's expense.
2. All horizontal controls are based on Maryland State Coordinates.
3. All vertical controls are based on U.S.G.S. data.
4. All pipe elevations shown are invert elevations.
5. Clear all utilities by a minimum of 6". Clear all poles by 2'-0" minimum or tunnel as required. The owner has contacted the utility companies and has made arrangements for bracing of poles as shown on the drawings. In the event the contractor's work requires the bracing of additional poles, any cost incurred by the owner for bracing of additional poles or damages shall be deducted from money owed the contractor. The contractor shall coordinate with the utility companies to schedule the bracing of the poles.
6. For details not shown on the drawings, and for materials and construction methods use Howard County Design Manual, Volume IV, Standard Specifications and Detail for Construction. (Latest Edition). The contractor shall have a copy of Volume IV on the job.
7. Where test pits have been made on existing utilities, they are noted by the symbol at the location of the test pit. A note or notes containing the results of the test pit or pits is included on the drawings. Existing utilities in the vicinity of the proposed work for which test pits have not been dug shall be located by the contractor two weeks in advance of construction operations at his own expense.
8. Contractor shall notify the following utility companies or agencies at least five working days before starting work shown on these plans:

State Highway Administration	531-5533
Baltimore Gas & Electric Co. Contractor Services	850-4620
Baltimore Gas & Electric Co. Underground Damage Control	787-9068
Miss Utility	1-800-257-7777
Colonial Pipeline Co.	795-1390
Bureau of Utilities, Howard County Department of Public Works	313-4900
9. Trees and shrubs are to be protected from damage to maximum extent. Trees and shrubs located within the construction strip are not to be removed or damaged by the contractor.
10. Contractor shall remove trees, stumps and roots along line of excavation. Payment for such removal shall be included in the unit price bid for construction of the main.
11. All water mains to be D.I.P. Class 52 unless otherwise noted.
12. Tops of all water mains to have a minimum of 3-1/2' cover unless otherwise noted.
13. Valves adjacent to tees shall be strapped to tees.
14. All fittings shall be buttressed or anchored with concrete in accordance with the Standard Details unless otherwise provided for on the drawings.
15. Fire hydrants shall be set to the bury line elevations shown on the drawings. All fire hydrants shall be restrained and buttressed with concrete in accordance with Standard Details. Soil around the fire hydrant shall be compacted in accordance with Section 1000 and 1005 of the Standard Specifications.
16. The contractor shall not operate any water main valves on the existing water system.
17. All water house connections shall be for inside meter setting unless otherwise noted on plans or in specifications.
18. All sewer mains shall be D.I.P. and P.V.C. unless otherwise noted.
19. All manholes shall be 4'-0" inside diameter unless otherwise noted.
20. Force mains shall be D.I.P. only.
21. Manholes shown with 12" and 16" walls are for brick manholes only.
22. Manholes designated W.T. in plan and profile shall have watertight frame and covers, Standard Detail GS.52. Where watertight manhole frame and cover is used, set top of frame 1'-6" above finished grade unless otherwise noted on the drawings.
23. House(s) with the symbol "C.N.S." indicates that cellar cannot be served.
24. Manholes can be either brick or precast concrete structures.
25. Contractor is solely responsible for construction means, methods, techniques, sequences, procedures, and safety precautions and programs.
26. The fire hydrant shall be installed as per standard detail W.1.11.
27. Fire hydrants will be located 3' FROM BACK OF CURB unless otherwise noted.

QUANTITIES				
ITEMS	QUANTITIES ESTIMATED	AS-BUILT		
		QUANTITIES	TYPE	MANUFACTURER / SUPPLIER
8" WATER	1593 LF	1568	D.I.P.	ATLANTIC STATES
6" WATER	86 LF	88	D.I.P.	" "
FIRE HYDRANTS	4 EA.	4	BB4E	AMERICAN FLOW CONTROL
8" VALVES	5 EA.	4	A2360-20	MUELLER
6" VALVES	4 EA.	4	" "	" "
6" SHC	100 LF	195	SDR-35	J-M
NAME OF UTILITY CONTRACTOR : MAGNOLIA				
		CHECKBOX		
		AS-BUILT DATE		
		SURVEY AND DRAFTING DIVISION		



W & S CODE COUNTY USE
 WATER NO. F-09
 SEWER NO. 5750615
 TEST GRADIENT: 700
 ZONE: 550

TYPE OF BUILDING: COMMERCIAL
 DRAINAGE AREA: LITTLE PATUXENT TREATMENT PLANT; PATAPSCO VIA 108 PUMPING STATION
 NUMBER OF BUILDABLE LOTS: 1
 NUMBER OF NON-BUILDABLE LOTS: 0
 NUMBER OF W.H.C.: 3
 NUMBER OF S.H.C.: 3

VICINITY MAP
 SCALE : 1"=600'

Sediment control measures for this contract will be implemented in accordance with Section 219 of the Specifications and as shown on SDP-95-62

Review for Howard Soil Conservation District and meets technical requirements.

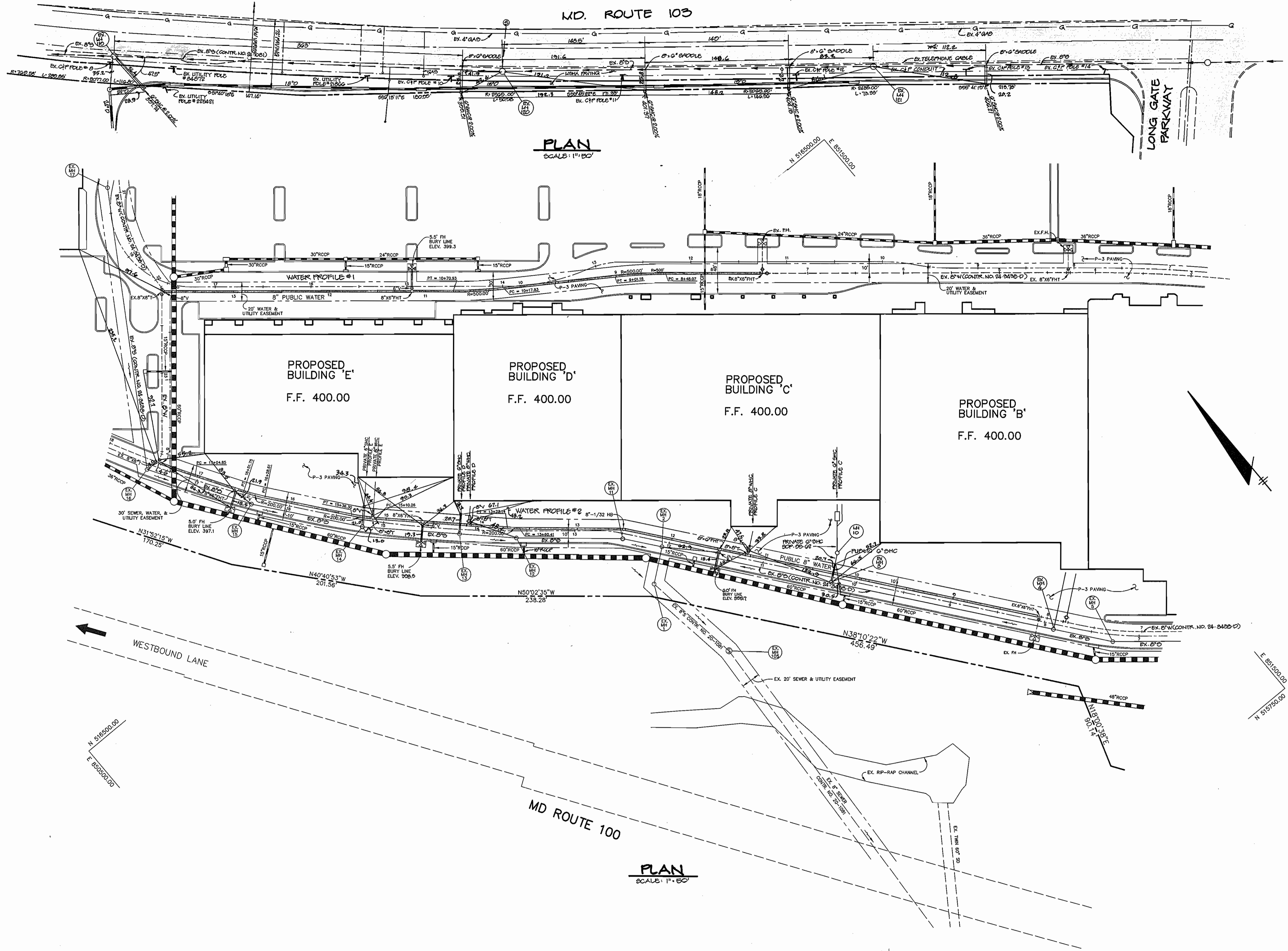
[Signature] 7/13/96
 NATURAL RESOURCES CONSERVATION SERVICE DATE

This plan is approved for soil erosion and sediment control by the Howard Soil Conservation District.

[Signature] 7/13/96
 HOWARD SOIL CONSERVATION DISTRICT DATE

DEPARTMENT OF PUBLIC WORKS HOWARD COUNTY, MARYLAND <i>[Signature]</i> 7-3-96 CHIEF, BUREAU OF UTILITIES DATE	DEPARTMENT OF PLANNING & ZONING HOWARD COUNTY, MARYLAND <i>[Signature]</i> 7/3/96 CHIEF, DEVELOPMENT ENGINEERING DIVISION DATE	RIEMER MUEGGE & ASSOCIATES, INC. Planners • Engineers • Surveyors 8818 Centre Park Drive • Suite 200 • Columbia, MD 21045 410-997-1800 FAX : 410-997-9282 1000/104002 TEL.570 <i>[Signature]</i> JAYKANT D. PAREKH #19148	DES: C.J.R. DRN: DAM CHK: DATE: 7-3-96	BY NO. REVISION DATE	TITLE SHEET 600' SCALE MAP NO. <u>24 & 30</u> BLOCK NO. <u>24 & 6</u>	LONG GATE CENTER PHASE 2 A COMMERCIAL CENTER 2nd ELECTION DISTRICT HOWARD COUNTY, MARYLAND CONTRACT NO. 24 - 3558 - D	SCALE AS SHOWN SHEET 1 OF 3
---	---	--	---	----------------------	---	--	------------------------------------

AS-BUILTS 4/4/97

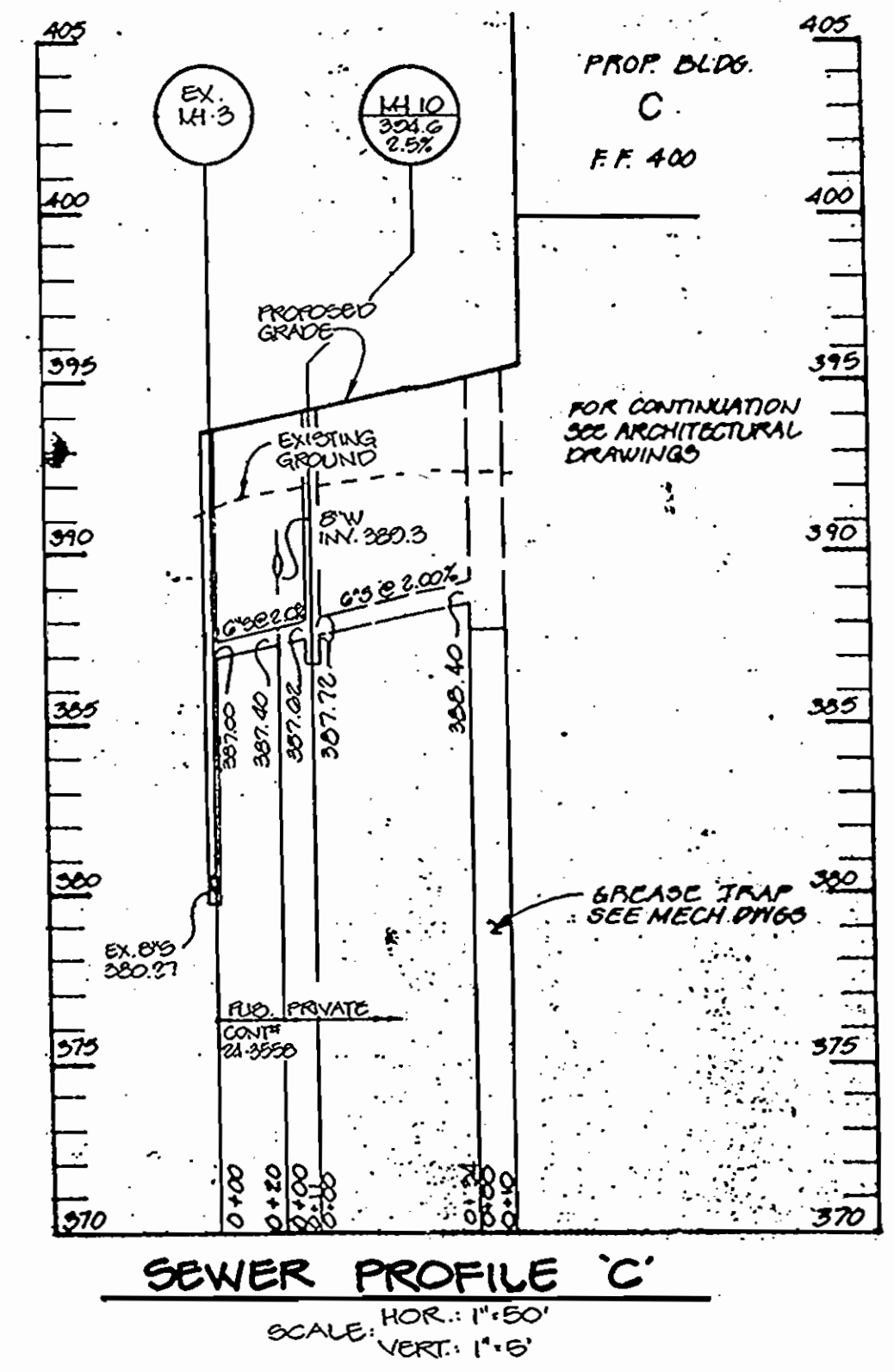
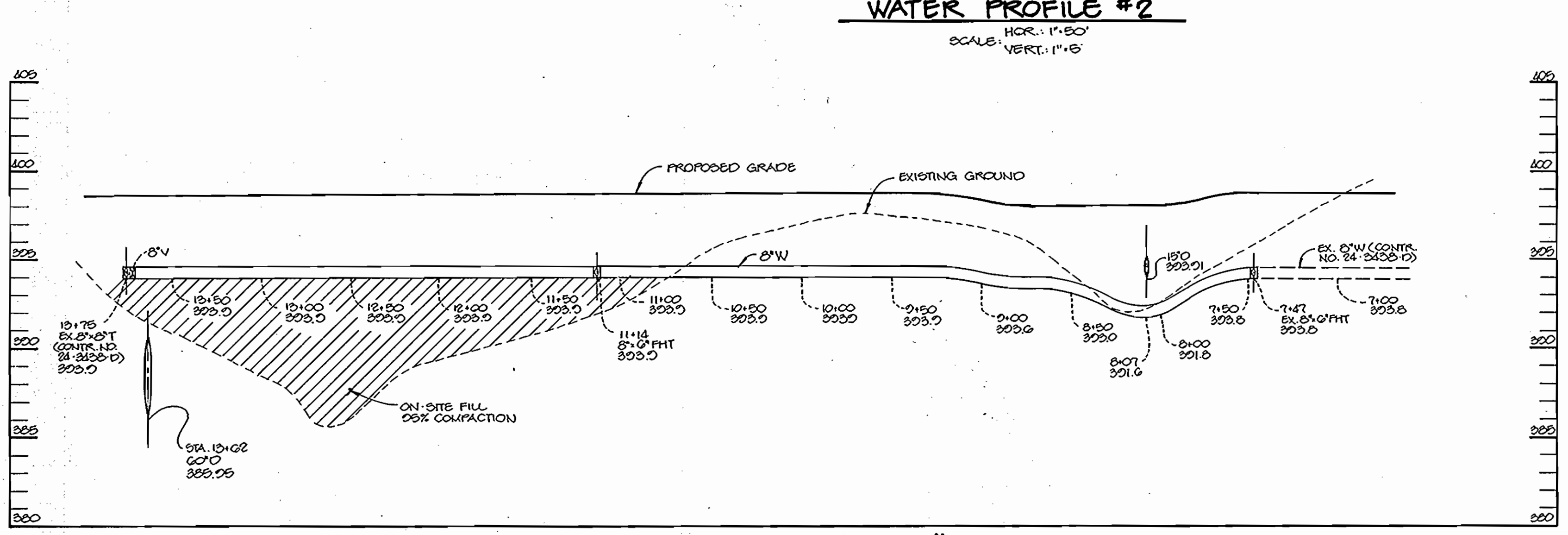
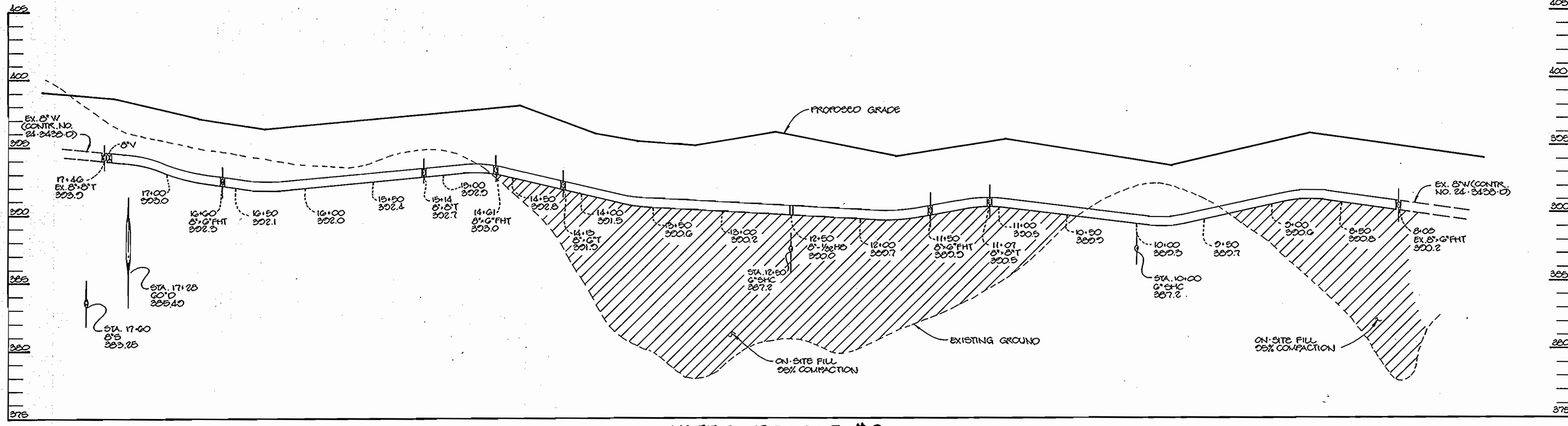
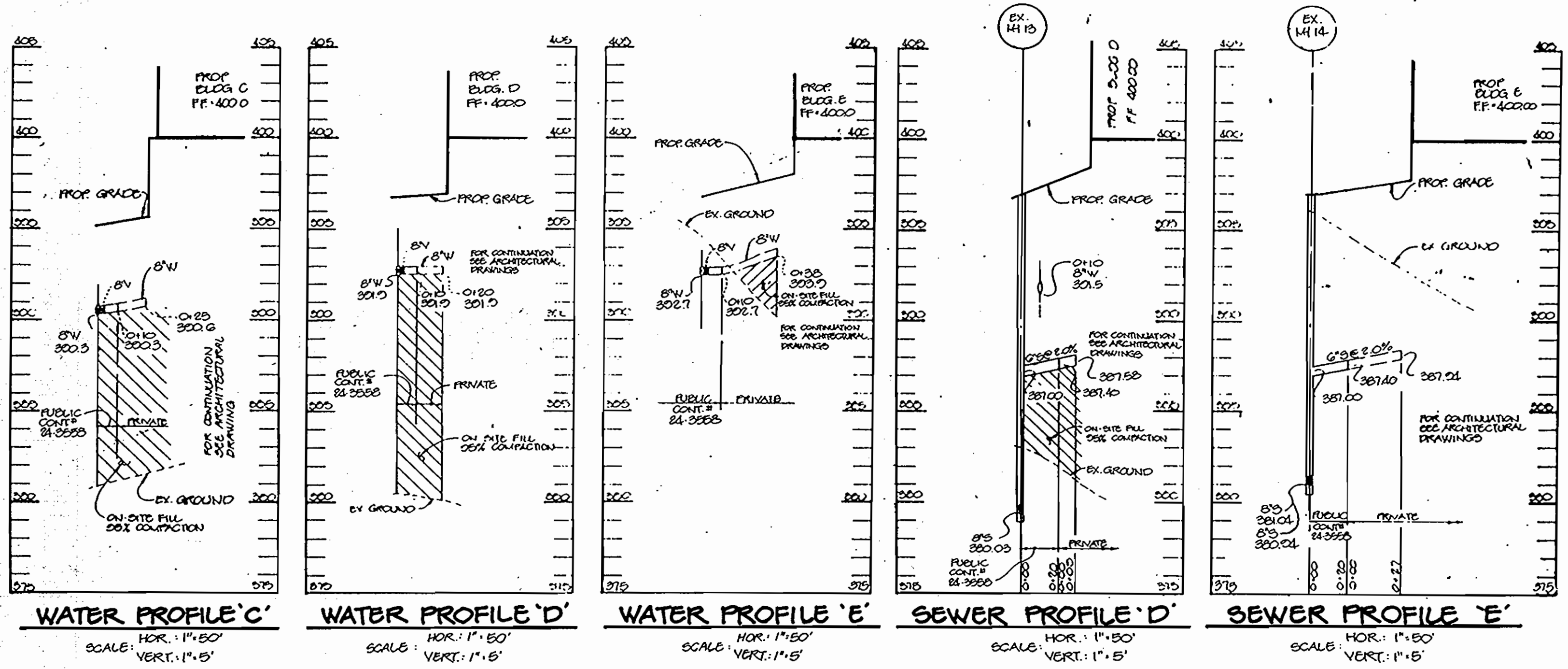


PLAN
SCALE: 1" = 50'

PLAN
SCALE: 1" = 50'

DEPARTMENT OF PUBLIC WORKS HOWARD COUNTY, MARYLAND <i>R. L. Berman</i> 7-3-96 CHIEF, BUREAU OF UTILITIES DATE	DEPARTMENT OF PLANNING & ZONING HOWARD COUNTY, MARYLAND <i>W. J. Danner</i> 7/5/96 CHIEF, DEVELOPMENT ENGINEERING DIVISION DATE	RIEMER MUEGGEL & ASSOCIATES, INC. Planners Engineers Surveyors 8818 Centre Park Drive Suite 200 Columbia, MD 21045 410-997-0900 FAX 410-997-9200 HOCO104202 WS1A.DWG	<i>J. Sarell</i> JAYKAM D. PAREKH # 19148	DES: CJR DRN: RPP/MAD CHK: DATE: 7-3-96 BY NO. REVISION DATE	PLAN OF WATER AND SEWER MAINS 600' SCALE MAP NO. 24 & 30 BLOCK NO. 24 & 6	LONG GATE CENTER PHASE 2 A COMMERCIAL CENTER 2nd ELECTION DISTRICT HOWARD COUNTY, MARYLAND CONTRACT NO. 24-3558-D SCALE 1" = 50' SHEET 2 OF 2
--	--	--	--	--	---	---

AS-BUILTS 4/4/97



DEPARTMENT OF PUBLIC WORKS
HOWARD COUNTY, MARYLAND

[Signature]
7-3-02
CHIEF, BUREAU OF UTILITIES

DEPARTMENT OF PLANNING & ZONING
HOWARD COUNTY, MARYLAND

[Signature]
7/5/02
CHIEF, DEVELOPMENT ENGINEERING DIVISION

RIEMER MUEGGE & ASSOCIATES, INC.
Planners • Engineers • Surveyors
8818 Centre Park Drive • Suite 200 • Columbia, MD 21045
410-997-8900 FAX: 410-997-9282
800/1440000 931.976

STATE OF MARYLAND
NOTARY PUBLIC
J. J. [Signature]
JAYKANT D. PAREKH #19148

DES: CJR				
DRN: MAD				
CHK:				
DATE: 7-3-02	BY:	NO.:	REVISION:	DATE:

PROFILES

600' SCALE MAP NO. 24 & 30 BLOCK NO. 24 & 6

LONG GATE CENTER PHASE 2
A COMMERCIAL CENTER
2nd ELECTION DISTRICT
HOWARD COUNTY, MARYLAND
CONTRACT NO. 24-3558-D

SCALE AS SHOWN
SHEET 3 OF 3