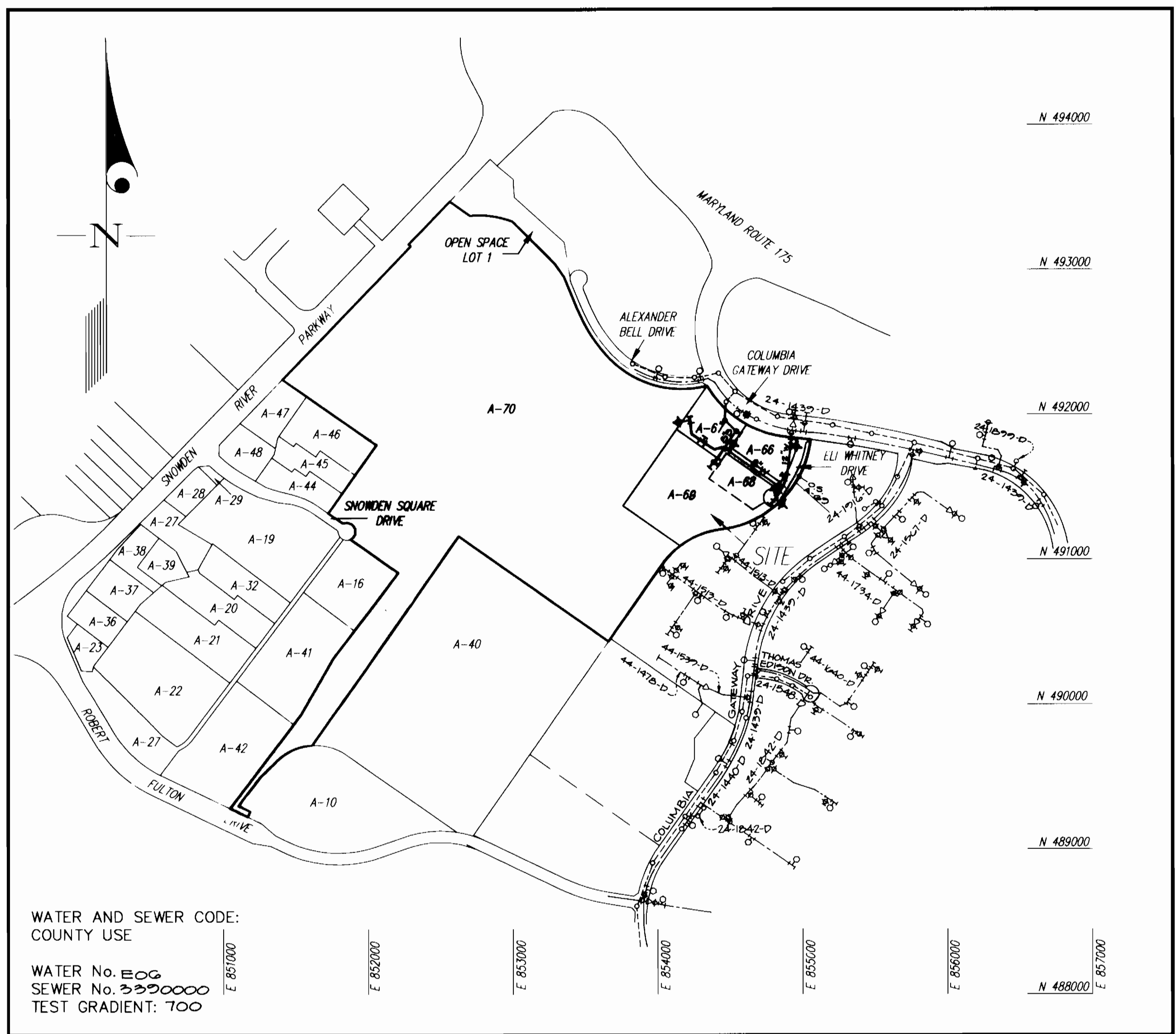


QUANTITIES				
ITEMS	QUANTITIES ESTIMATED	AS-BUILT		
		QUANTITIES	TYPE	MANUFACTURER/SUPPLIER
12" Water	224 LF	224 LF	CL 52 D.I.P.	GRIFFIN PIPE
8" Water	920 LF	920 LF	CL 52 D.I.P.	GRIFFIN PIPE
6" Water	115 LF	115 LF	CL 36 D.I.P.	"
Fire Hydrant & Valve	4 Ea.	4 EA.	3/4" NPT	BEULAH'S SUPPLY/MULLER CO.
2" Valve	5 Ea.	5 EA.	OR. LATE VALVE	"
2-1/8 HD	3 Ea.	3 EA.	MJ C. 1-1/2"	"
8" Sewer	944 LF	923 LF	SRD 36 P.V.	"
4 Manholes	3 Ea.	3 EA.		ATLANTIC CONC. PRODUCTS
12" Valve	1 Ea.	1 EA.	OR. LATE VALVE	BEULAH'S SUPPLY/MULLER CO.
Type B Drop Conn.	1 Ea.	1 EA.		ATLANTIC CONCRETE PRODUCTS
8" x 8" TEE		1 EA.		
1" x 8" TEE		1 EA.		
1" x 2" TEE		1 EA.		
8" x 2" TEE		1 EA.		
8" x 4" TEE		1 EA.		
8" x 4" ELBOW		1 EA.		
12" x 1/2" HE	16.11.01 3/9/97	1 EA.		

NAME OF UTILITY CONTRACTOR: _____

SURVEY AND DRAFTING DIV. _____ CHECKBOX: _____ AS-BUILT DATE: 2/16/97



VICINITY MAP
SCALE: 1"=600'

CONTRACT No. 24-3557-D
GATEWAY COMMERCE CENTER III
PARCELS A-66 THRU A-70
HOWARD COUNTY, MARYLAND
DEPARTMENT OF PUBLIC WORKS

TYPE OF BUILDING	Commercial/Industrial
NUMBER OF UNITS	4 Buildable - 1 Open Space
NUMBER OF S.H.C.'s	1 Existing - 4 Proposed
NUMBER OF W.H.C.'s	1 Existing - 4 Proposed
DRAINAGE AREA	Little Patuxent
TREATMENT PLANT	Little Patuxent Water Quality Management Center, Savage, Howard County

GENERAL NOTES

- PART I**
- Approximate location of existing mains are shown. The contractor shall take all necessary precautions to protect existing mains and services and maintain uninterrupted supply. Any damage incurred shall be repaired immediately to the satisfaction of the Engineer at the Contractor's expense.
 - All horizontal controls are based on Maryland State Coordinates [North American Datum 1983 (NAD '83)].
 - All vertical controls are based on U.S.G.S. data.
 - All pipe elevations shown are invert elevations.
 - Clear all utilities by a minimum of 6". Clear all poles by 2'-0" minimum or tunnel as required. The owner has contacted the utility companies and has made arrangements for bracing of poles as shown on the drawings. In the event the contractor's work requires the bracing of additional poles, any cost incurred by the owner for bracing of additional poles or damages shall be deducted from money owed the contractor. The contractor shall coordinate with the utility companies to schedule the bracing of the poles.
 - For details not shown on the drawings, and for materials and construction methods use Howard County Design Manual, Volume IV, Standard Specifications and Detail for Construction (Latest Edition). The contractor shall have a copy of Volume IV on the job.
 - Where test pits have been made on existing utilities, they are noted by the symbol at the location of the test pit. A note or notes containing the results of the test pit or pits is included on the drawings. Existing utilities in the vicinity of the proposed work for which test pits have not been dug shall be located by the contractor two weeks in advance of construction operations at his own expense.
 - Contractor shall notify the following utility companies or agencies at least (5) working days before starting work shown on these plans:
 - State Highway Administration 531-5533
 - BGE Contractor Services 850-4620
 - BGE Under Ground Damage Control 787-3068
 - Miss Utility 1-800-257-7777
 - Colonial Pipeline Co. 795-1390
 - Howard County Department of Public Works Bureau of Utilities 313-4900
 - Trees and shrubs are to be protected from damage to maximum extent. Trees and shrubs located within the construction strip are not to be removed or damaged by the contractor.
 - Contractor shall remove trees, stumps and roots along line of excavation. Payment for such removal shall be included in the unit price bid for construction of the main.
 - The contractor shall notify the Bureau of Highways, Howard County, at (410) 313-2450 at least five (5) working days before any open cut of any County road or boring/jacking operation on County roads for laying water/sewer mains or house connections. The approval of these drawings will constitute compliance with DPW requirement per Section 18.114(a) of the Howard County Code.
- PART II - WATER**
- All water mains to be D.I.P. Class 52 unless otherwise noted.
 - Tops of all water mains to have a minimum of 3'-1/2" cover unless otherwise noted.
 - Valves adjacent to tees shall be strapped to tees.
 - All fittings shall be buttressed or anchored with concrete in accordance with the Standard Details unless otherwise provided for on the drawings.
 - Fire hydrants shall be set to the bury line elevations shown on the drawings. All fire hydrants shall be restrained and buttressed with concrete in accordance with the Standard Details. Soil around the fire hydrant shall be compacted in accordance with Section 1000 and 1005 of the Standard Specifications.
 - The contractor shall not operate any water main valves on the existing water system.
 - All water house connections shall be for inside meter setting unless otherwise noted on plans or in specifications.
 - For sprinkler system for all townhomes or multi-family dwelling units shall have a minimum of 1' connection with a 3/4" meter.
- PART III - SEWER**
- All sewer mains shall be D.I.P. and P.V.C. unless otherwise noted.
 - All manholes shall be 4'-0" inside diameter unless otherwise noted.
 - Force mains shall be D.I.P. only.
 - Manholes shown with 12" and 16" walls are for brick manholes only.
 - Manholes designated W.T. in plan and profile shall have watertight frame and covers, Standard Detail G5.52. Where watertight frame and cover is used, set top of frame 1'-6" above finished grade unless otherwise noted on drawings.
 - House(s) with the symbol "C.N.S." indicates that cellar cannot be served.

Sediment Control Measures will be implemented in accordance with Section 219 of the Specifications & with Road Drawings Plan F-26-107, Drawings 2&4 of 4 for Sediment & Erosion Control, and GF-26-180

REVIEWED FOR HOWARD SOIL CONSERVATION DISTRICT AND MEETS TECHNICAL REQUIREMENT.

U.S.D.A. NATURAL RESOURCES CONSERVATION SERVICE

THIS DEVELOPMENT PLAN IS APPROVED FOR SOIL EROSION AND SEDIMENT CONTROL BY THE HOWARD SOIL CONSERVATION DISTRICT

APPROVED:

DEPARTMENT OF PUBLIC WORKS
HOWARD COUNTY, MARYLAND

10-31-96
CHIEF, BUREAU OF UTILITIES DATE

DEPARTMENT OF PLANNING AND ZONING
HOWARD COUNTY, MARYLAND

11/24/96
CHIEF, DEVELOPMENT ENGINEERING DIVISION DATE

GLW GUTSCHICK LITTLE & WEBER, P.A.
CIVIL ENGINEERS, SURVEYORS, PLANNERS, LANDSCAPE ARCHITECTS
3909 NATIONAL DRIVE - SUITE 250 - BURTONSVILLE OFFICE PARK - BURTONSVILLE, MARYLAND 20866
TEL: (410) 880-1820 ~ FAX: (301) 421-4186

DES: GAH			
DRN. CAD: GAH			
CHK: CKG	kfp	GAH	GAH
DATE: OCT 1996	BY: NO	REVISION	DATE

Revise 16" in quantities box 5/19/97
Revise Quantities Box, Vicinity Map & Sediment Control Reference 2/24/97

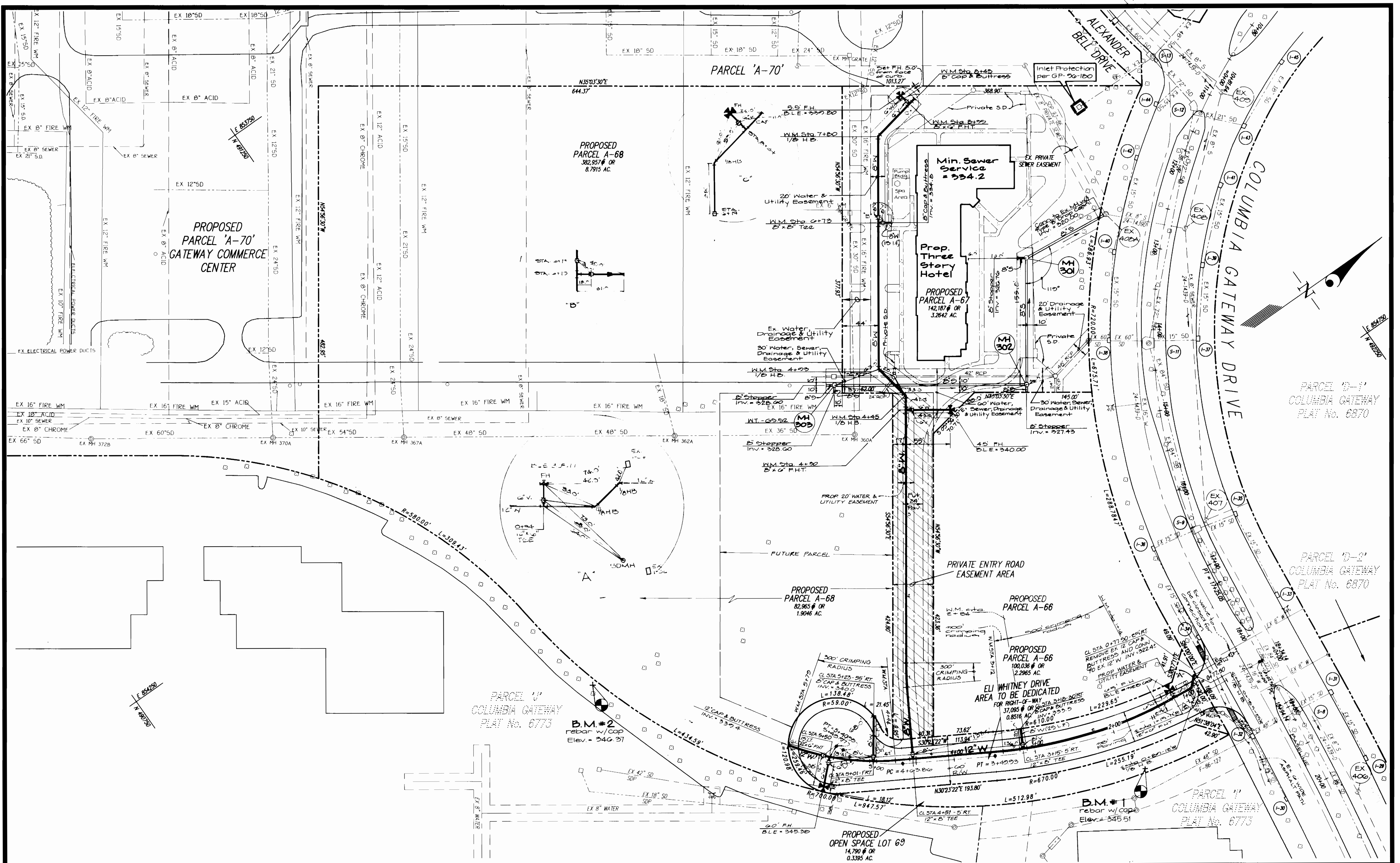
PUBLIC WATER & SEWER EXTENSION COVER SHEET
SCALE: AS SHOWN
600' SCALE MAP NO. 37& 43 BLOCK NO. 19 & 1

GLW FILE No. 96006

SAINTARY & WATER AS SHOWN

GATEWAY COMMERCE CENTER III
PARCELS A-66 THRU A-70
6th ELECTION DISTRICT HOWARD COUNTY, MARYLAND
CONTRACT No. 24-3557-D

SCALE AS SHOWN
SHEET 1 OF 3



DEPARTMENT OF PUBLIC WORKS
HOWARD COUNTY, MARYLAND

10-31-96
DATE

DEPARTMENT OF PLANNING AND ZONING
HOWARD COUNTY, MARYLAND

11/12/96
DATE

GLW GUTSCHICK LITTLE & WEBER, P.A.
CIVIL ENGINEERS, SURVEYORS, PLANNERS, LANDSCAPE ARCHITECTS
3909 NATIONAL DRIVE - SUITE 250 - BURTONSVILLE OFFICE PARK - BURTONSVILLE, MARYLAND 20866
TEL: (410) 880-1820 ~ FAX: (301) 421-4186

DES:	GAH				
DRN:	CAH				
CHK:	CRG	KIP	5/19/97		
DATE:	OCT 1996	GAH	2/24/97		
BY:	NO				
		REVISION	DATE		

PUBLIC WATER & SEWER EXTENSION
SCALE: 1" = 50'
600' SCALE MAP NO. 37 & 43 BLOCK NO. 19 & 1

GATEWAY COMMERCE CENTER III
PARCELS A-66 THRU A-70
6th ELECTION DISTRICT HOWARD COUNTY, MARYLAND
CONTRACT No: 24-3557-D

SCALE AS SHOWN
SHEET 2 OF 3

