

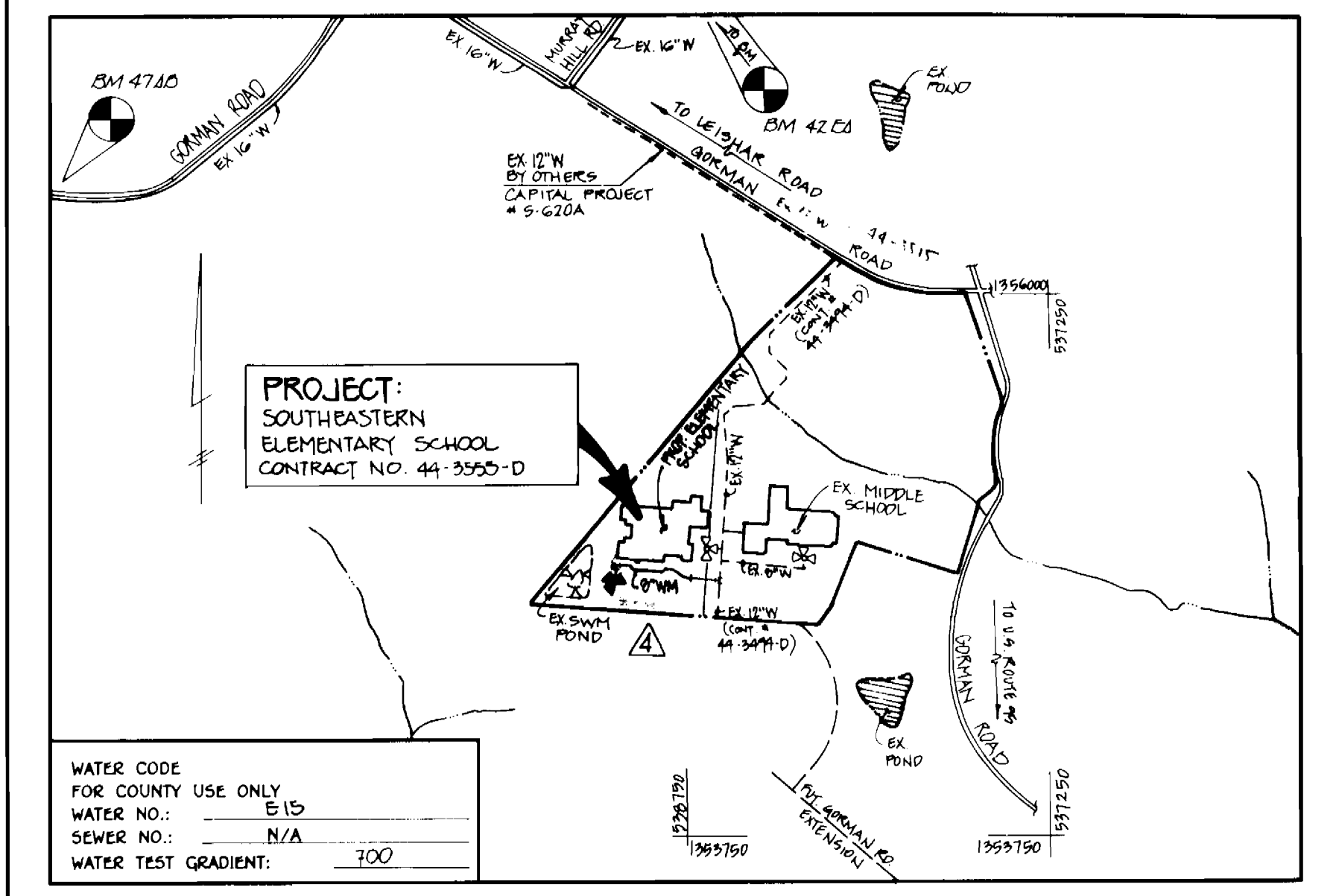
**ENGINEER'S CERTIFICATE**

I HEREBY CERTIFY THAT THIS PLAN FOR EROSION & SEDIMENT CONTROL, RETENTION OF EXISTING & REMOVAL OF EXISTING & PRACTICAL & WORKABLE PLAN BASED ON MY PERSONAL KNOWLEDGE OF THE SITE CONDITIONS & THAT I AM FAMILIAR WITH THE REQUIREMENTS OF THE ADVANCED SOIL CONSERVATION DISTRICT

Paul W. Kriebel 1/29/96  
SIGNATURE OF ENGINEER DATE

**BENCHMARKS**

HORIZONTAL (LVD 83) & VERTICAL (LVD 29)  
CONTROL POINTS 47.80 & 42.12



PROJECT: SOUTHEASTERN ELEMENTARY SCHOOL  
CONTRACT NO. 44-3555-D

WATER CODE FOR COUNTY USE ONLY: E15  
WATER NO.: N/A  
SEWER NO.: N/A  
WATER TEST GRADIENT: 700

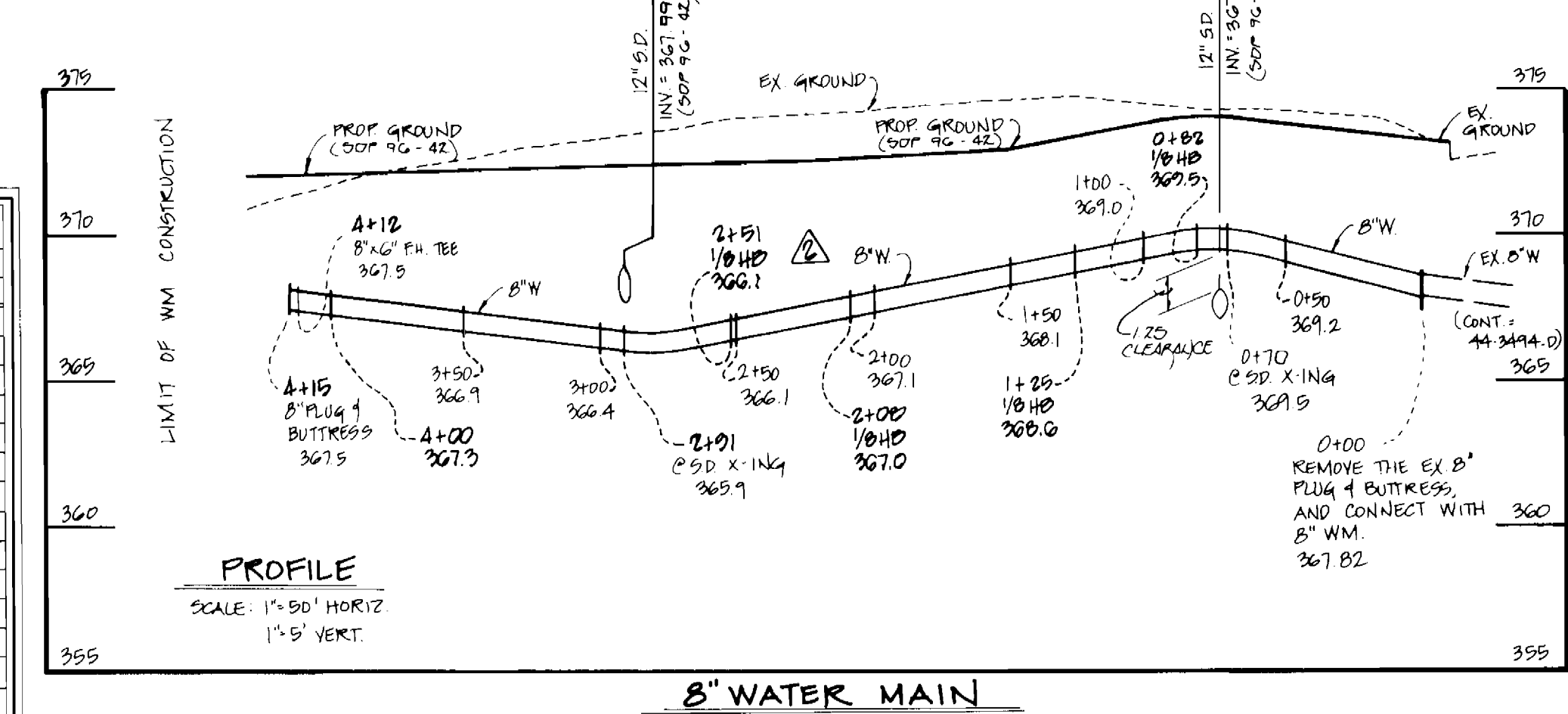
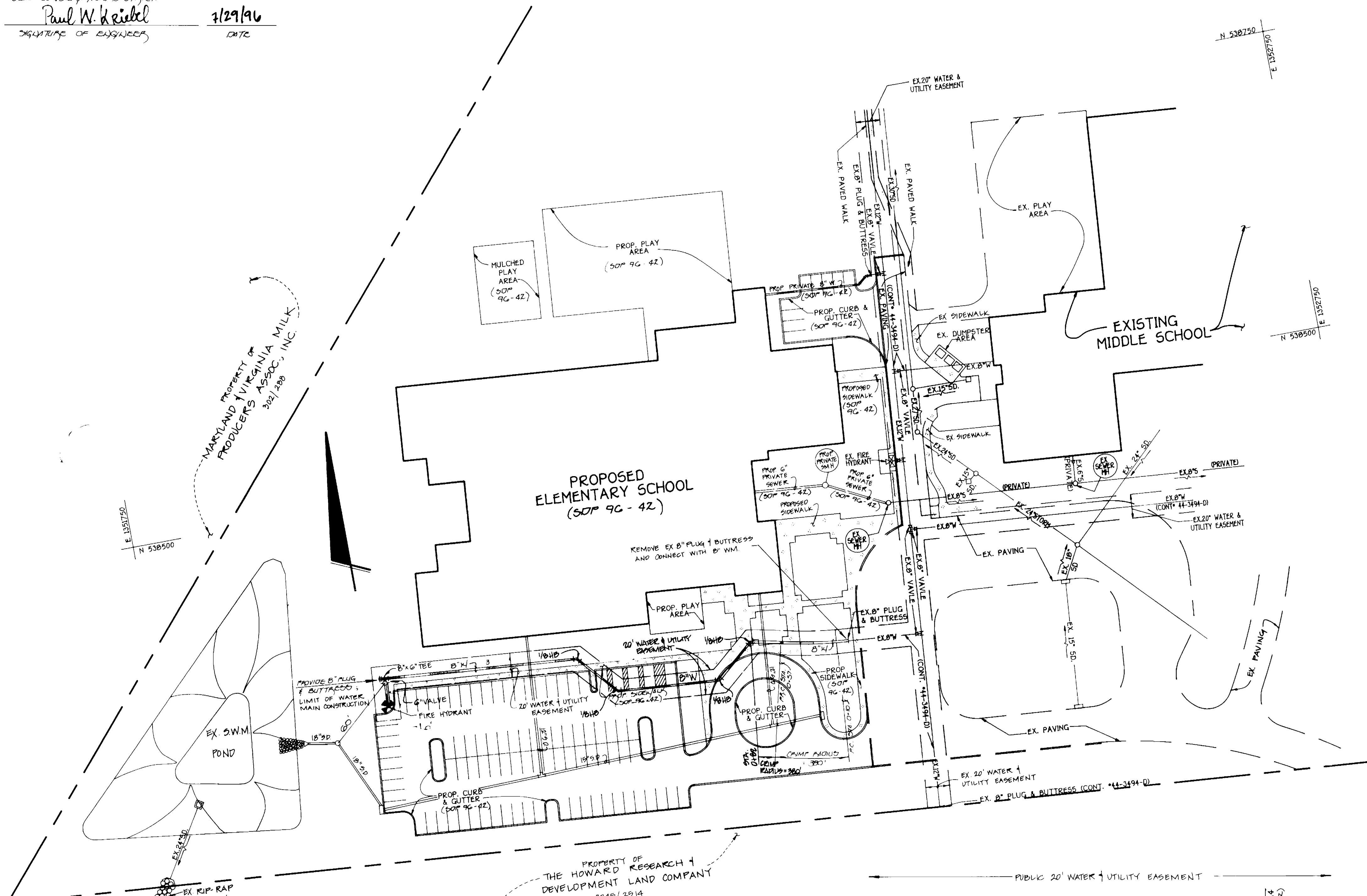
TYPE OF BUILDING: ELEMENTARY SCHOOL  
NUMBER OF PARCELS: 1  
NO. OF WATER HOUSE CONNECTIONS: 0  
NO. OF SEWER HOUSE CONNECTIONS: N/A  
DRAINAGE AREA: LITTLE PATUXENT  
TREATMENT PLANT: LITTLE PATUXENT WATER  
RECLAMATION PLANTS, SAVAGE, MD.

**VICINITY MAP**

SCALE: 1"=600'

**GENERAL NOTES**

- APPROXIMATE LOCATION OF EXISTING MAINS ARE SHOWN. THE CONTRACTOR SHALL TAKE ALL NECESSARY PRECAUTIONS TO PROTECT EXISTING MAINS AND SERVICES AND MAINTAIN UNINTERRUPTED SUPPLY. ANY DAMAGE INCURRED SHALL BE REPAIRED IMMEDIATELY TO THE SATISFACTION OF THE ENGINEER AT THE CONTRACTOR'S EXPENSE.
- ALL HORIZONTAL CONTROLS ARE BASED ON MARYLAND STATE COORDINATES.
- ALL VERTICAL CONTROLS ARE BASED ON U.S.G.S. DATUM.
- ALL PIPE ELEVATIONS ARE INVERT ELEVATIONS.
- CLEAR ALL UTILITIES BY A MINIMUM OF 6". CLEAR ALL POLES BY 2'-0" MINIMUM.
- FOR DETAILS NOT SHOWN ON THE DRAWINGS, AND FOR MATERIALS AND CONSTRUCTION METHODS, USE HOWARD COUNTY DESIGN MANUAL, VOLUME IV, STANDARD SPECIFICATIONS AND DETAILS FOR CONSTRUCTION (1991 AMENDMENTS) THE CONTRACTOR SHALL HAVE A COPY OF VOLUME IV ON THE JOB SITE.
- WHERE TEST PITS HAVE BEEN MADE ON EXISTING UTILITIES, THEY ARE NOTED BY THE SYMBOL AT THE LOCATION OF THE TEST PIT. A NOTE OR NOTES CONTAINING THE RESULTS OF THE TEST PIT OR PITS IS INCLUDED ON THE DRAWINGS. EXISTING UTILITIES IN THE VICINITY OF THE PROPOSED WORK FOR WHICH TEST PITS HAVE NOT BEEN DUG SHALL BE VERIFIED BY THE CONTRACTOR TO HIS OWN SATISFACTION. ANY DAMAGE TO EXISTING FACILITIES DUE TO THE CONTRACTOR'S NEGLIGENCE SHALL BE REPAIRED AT THE CONTRACTOR'S EXPENSE.
- CONTRACTOR SHALL NOTIFY THE FOLLOWING UTILITIES OR AGENCIES AT LEAST FIVE WORKING DAYS BEFORE STARTING WORK SHOWN ON THESE PLANS:
  - STATE HIGHWAY ADMINISTRATION - 531-5533
  - BALTIMORE GAS & ELECTRIC CO. - CONTRACTOR SERVICES - 850-4620
  - BALTIMORE GAS & ELECTRIC CO. - UNDER GROUND DAMAGE CONTROL - 787-9068
  - MISS UTILITY - 1-800-257-7777
  - COLONIAL PIPELINE CO. - 795-1390
  - BUREAU OF UTILITIES, HOWARD COUNTY DEPARTMENT OF PUBLIC WORKS - 313-4900
- TREES AND SHRUBS ARE TO BE PROTECTED FROM DAMAGE TO MAXIMUM EXTENT. TREES AND SHRUBS LOCATED WITHIN THE CONSTRUCTION STRIP ARE NOT TO BE REMOVED OR DAMAGED BY THE CONTRACTOR.
- CONTRACTOR SHALL REMOVE TREES, STUMPS AND ROOTS ALONG THE LINE OF EXCAVATION. PAYMENT FOR SUCH REMOVAL SHALL BE INCLUDED IN THE UNIT PRICE BID FOR CONSTRUCTION OF THE MAIN.
- ALL SEWER MAINS SHALL BE D.I.P. OR P.V.C. UNLESS OTHERWISE NOTED.
- ALL MANHOLES SHALL BE 4'-0" INSIDE DIAMETER UNLESS OTHERWISE NOTED.
- T.B. DENOTES TEST BORING.
- MANHOLES SHOWN WITH 12" AND 18" WALLS ARE FOR BRICK MANHOLES ONLY.
- MANHOLES DESIGNATED W.T. IN PLAN AND PROFILE SHALL HAVE WATERTIGHT FRAME AND COVERS, STANDARD DETAIL G.5.2.
- WHERE WATERTIGHT MANHOLE FRAME AND COVER IS USED, SET TOP OF FRAME 1'-6" ABOVE FINISHED GRADE UNLESS OTHERWISE NOTED ON THE PLANS OR IN THE SPECIFICATIONS.
- HOUSE(S) WITH THE SYMBOL "C.N.S." INDICATES THAT THE CELLAR CANNOT BE SERVED.
- ALL WATER HOUSE CONNECTIONS SHALL BE FOR INSIDE METER SETTING, UNLESS OTHERWISE NOTED ON THE PLANS OR IN THE SPECIFICATIONS.
- MANHOLES LOCATED WITHIN THE PROPOSED ROADWAY SHALL HAVE STANDARD HEAVY TRAFFIC MANHOLE FRAMES AND COVERS, STANDARD DETAIL G.5.1.
- WATER MAINS AND WATER HOUSE CONNECTION LINES MUST BE PLACED AS TO HAVE ONE (1) FOOT SEPARATION FROM THE SEWER MAIN OR SEWER HOUSE CONNECTION AS THEY PASS ABOUT IT.
- ALL WATER MAINS SHALL BE D.I.P., CLASS 52 UNLESS OTHERWISE NOTED.
- TOPS OF ALL WATER MAINS TO HAVE A MINIMUM OF 3-1/2" COVER UNLESS OTHERWISE NOTED.
- VALVES ADJACENT TO TEES SHALL BE STRAPPED TO TEES.
- ALL FITTINGS SHALL BE BUTTRESSED OR ANCHORED WITH CONCRETE IN ACCORDANCE WITH THE STANDARD DETAILS UNLESS OTHERWISE PROVIDED FOR ON THE DRAWINGS.
- FIRE HYDRANTS SHALL BE SET TO THE BURY LINE ELEVATION SHOWN ON THE DRAWINGS. ALL FIRE HYDRANTS SHALL BE RESTRAINED AND BUTTRESSED WITH CONCRETE IN ACCORDANCE WITH THE STANDARD DETAILS (W.11 AND W.2.13). SOIL AROUND THE FIRE HYDRANT SHALL BE COMPACTED IN ACCORDANCE WITH SECTION 1000 AND 1005 OF THE STANDARD SPECIFICATIONS.
- THE CONTRACTOR SHALL NOT OPERATE ANY WATER MAIN VALVES ON THE EXISTING WATER SYSTEM.
- ALL D.I.P. FITTINGS SHALL BE IN ACCORDANCE WITH AWWA SPECIFICATIONS C-153; DUCTILE IRON COMPACT FITTINGS, 3-INCH THROUGH 12-INCH FOR WATER AND OTHER LIQUIDS.
- THE CONTRACTOR SHALL NOTIFY THE BUREAU OF HIGHWAYS, HOWARD COUNTY, (410) 313-2450 AT LEAST FIVE WORKING DAYS BEFORE ANY OPEN CUT OF ANY COUNTY ROAD OR BORING/JACKING OPERATION IN COUNTY ROADS FOR LAYING WATER/SEWER MAINS OR HOUSE CONNECTIONS. THE APPROVAL OF THESE DRAWINGS WILL CONSTITUTE COMPLIANCE WITH DPW REQUIREMENTS PER SECTION 18.114(b) OF THE HOWARD COUNTY CODE.



QUANTITIES				
ITEM	ESTIMATED	QUANTITIES	25' BUILT TYPE	SUPPLIER
8" WATER	415 LF	390 LF	C.L.C.D.I.P.	GRIFFIN / M.G.C.
6" WATER	15 LF	16 LF	C.L.C.D.I.P.	"
FIRE HYDRANT	1 EACH	1 EA.	C.L.C.D.I.P.	KENNEDY / M.G.C.
8" G' TEE	1 EACH	1 EA.	GATE	GRIFFIN / M.G.C.
G' VALVE	1 EACH	1 EA.	GATE	KENNEDY / M.G.C.
8" PLUG & BUTTRESS	1 EACH	1 EA.	M.U.F. 1/2"	GRIFFIN / M.G.C.
8" 1/2 HD	4 EACH			

REVIEWED FOR HOWARD COUNTY SOIL CONSERVATION DISTRICT AND MEETS TECHNICAL REQUIREMENTS.

John H. Winkler 8/28/86  
U.S.D.A. NATURAL RESOURCES CONSERVATION SERVICE DATE

THIS DEVELOPMENT IS APPROVED FOR EROSION AND SEDIMENT CONTROL BY HOWARD SOIL CONSERVATION DISTRICT.

APPROVED: John R. Dutton 8/28/86  
HOWARD SOIL CONSERVATION DISTRICT DATE

SEDIMENT CONTROL MEASURES FOR THIS CONTRACT WILL BE IMPLEMENTED IN ACCORDANCE WITH SECTION 219 OF THE HOWARD COUNTY DESIGN MANUAL & STANDARDS AND SPECIFICATIONS FOR SOIL EROSION AND SEDIMENT CONTROL IN DEVELOPING AREAS AS SHOWN ON S.D.P. 96-42

Cathleen Conley Young 7/10/96  
SIGNATURE OF DEVELOPER DATE

DEPARTMENT OF PUBLIC WORKS  
HOWARD COUNTY, MARYLAND

Robert Young 8-27-96  
CHIEF, BUREAU OF UTILITIES DATE

DEPARTMENT OF PLANNING AND ZONING  
HOWARD COUNTY, MARYLAND

John D. Dammann 8/28/86  
CHIEF, DEVELOPMENT ENGINEERING DIVISION DATE

Fisher, Collins & Carter, Inc.  
#9757  
CIVIL ENGINEERING CONSULTANTS & LAND SURVEYORS  
CENTENNIAL SQUARE OFFICE PARK  
10272 Baltimore National Pike  
Billicott City, Maryland 21042  
(410) 461-2855

TERRELL A. FISHER

DES: M.J.M.			
DRWN: F.J.M./J.L.	PLC	INDICATE REVISION W.M. ALIGNMENT IN VICINITY MAP	2/9/01
CHK: P.W.K.	PLC	REVERSE QUANTITIES TO REFLECT REVISION ALIGNMENT	2/9/01
DATE:	PLC	REVERSE PROFILE TO REFLECT REVISION W.M. ALIGNMENT	2/9/01
	PLC	REVERSE ALIGNMENT TO ACCOMMODATE ADDITION TO SCHOOL	3/9/01
BY NO.		REVISION	DATE

600' SCALE MAP NO. 47	BLOCK NO. 2
-----------------------	-------------

PLAN VIEW & PROFILE

SOUTHEASTERN ELEMENTARY SCHOOL  
CONTRACT NO. 44-3555-D  
SIXTH ELECTION DISTRICT  
HOWARD COUNTY, MARYLAND

SCALE AS SHOWN  
SHEET 1 OF 1