

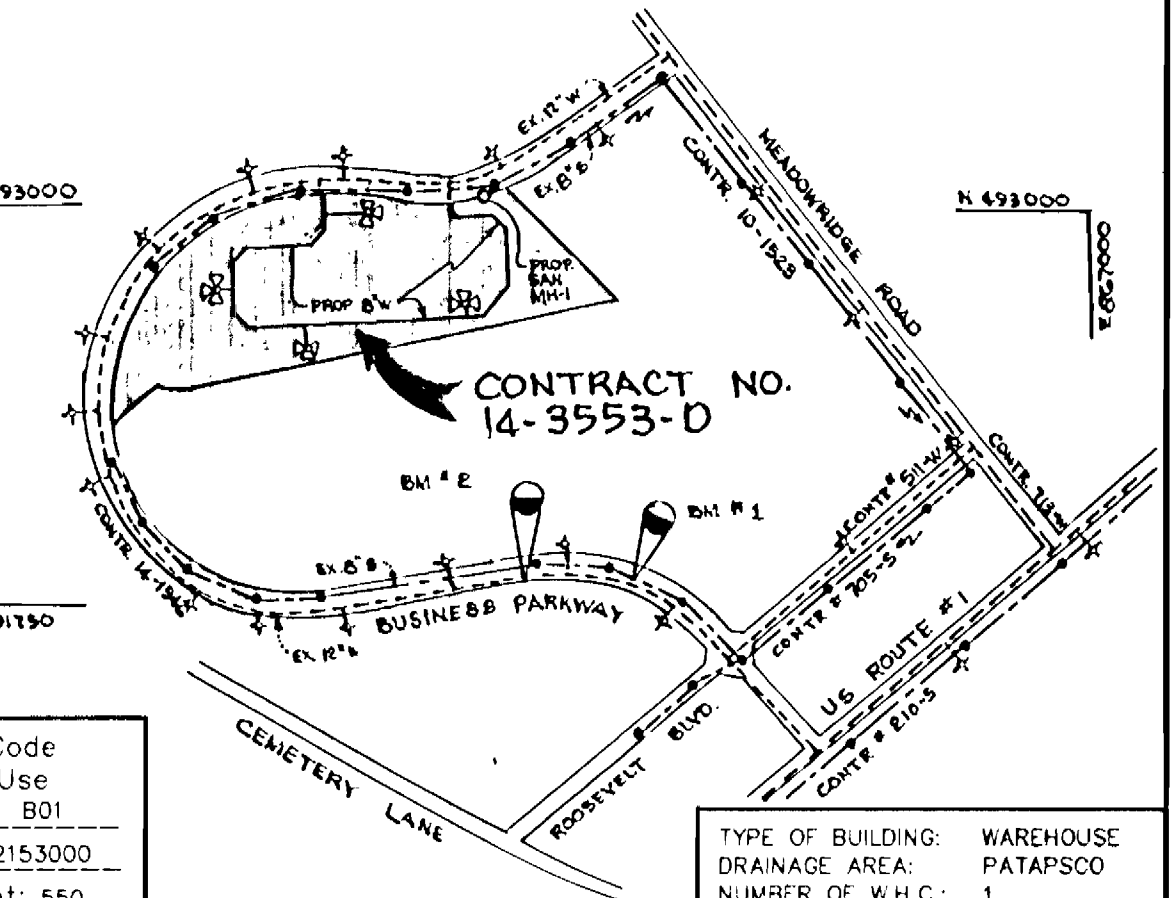
SEWER ABANDONMENT NOTE
CONTRACTOR TO FILL 8" SEWER AT MANHOLE 204

BUSINESS PARKWAY
A HOWARD COUNTY PUBLIC ROAD
A MINOR COLLECTOR

BENCHMARKS

BM #1 ELEV. 201.28
N 491.796 E 865.607
PK NAIL IN CURB
BM #2 ELEV. 195.85
N 491.839 E 865.272
PK NAIL IN CURB

W & S Code
County Use
Water No. BDI
Sewer No. 2153000
Test Gradient: 550
Zone: 400



VICINITY MAP
SCALE: 1"=600'

GENERAL NOTES

- Approximate location of existing mains are shown. The contractor shall take all necessary precautions to protect existing mains and services and maintain uninterrupted supply. Any damage incurred shall be repaired immediately to the satisfaction of the Engineer at the Contractor's expense.
- All horizontal controls are based on Maryland State Coordinates.
- All vertical controls are based on U.S.G.S. data.
- All pipe elevations shown are invert elevations.
- Clear all utilities by a minimum of 6". Clear all poles by 2'-0" minimum or tunnel as required. The owner has contacted the utility companies and has made arrangements for bracing of poles as shown on the drawings. In the event the contractor's work requires the bracing of additional poles, any cost incurred by the owner for bracing of additional poles or damages shall be deducted from money owed the contractor. The contractor shall coordinate with the utility companies to schedule the bracing of the poles.
- For details not shown on the drawings, and for materials and construction methods use Howard County Design Manual - Volume IV, Standard Specifications and Detail for Construction (Latest Edition). The contractor shall have a copy of Volume IV on the job.
- Where test pits have been made on existing utilities, they are noted by the symbol at the location of the test pit. A note or notes containing the results of the test pit or pits is included on the drawings. Existing utilities in the vicinity of the proposed work for which test pits have not been dug shall be located by the contractor two weeks in advance of construction operations at his own expense.
- Contractor shall notify the following utility companies or agencies at least five working days before starting work shown on these plans:
State Highway Administration 531-5533
Baltimore Gas & Electric Co. Contractor Services 850-4620
Baltimore Gas & Electric Co. Underground Damage Control 787-9955
Miss Utility 1-800-257-7777
Colonial Pipeline Co. 765-1350
Bureau of Utilities, Howard County Department of Public Works 313-4900
- Trees and shrubs are to be protected from damage to maximum extent. Trees and shrubs located within the construction strip are not to be removed or damaged by the contractor.
- Contractor shall remove trees, stumps and roots along line of excavation. Payment for such removal shall be included in the unit price bid for construction of the main.
- All water mains to be D.I.P., Class 52 unless otherwise noted.
- Tops of all water mains to have a minimum of 3-1/2" cover unless otherwise noted.
- Valves adjacent to tees shall be strapped to tees.
- All fittings shall be buttressed or anchored with concrete in accordance with the Standard Details unless otherwise provided for on the drawings.
- Fire hydrants shall be set to the bury line elevations shown on the drawings. All fire hydrants shall be restrained and buttressed with concrete in accordance with Standard Details. Soil around the fire hydrant shall be compacted in accordance with Section 1000 and 1005 of the Standard Specifications.
- The contractor shall not operate any water main valves on the existing water system.
- All water house connections shall be for inside meter setting unless otherwise noted on plans or in specifications.
- All sewer mains shall be D.I.P. and P.V.C. unless otherwise noted.
- All manholes shall be 4'-0" inside diameter unless otherwise noted.
- Force mains shall be D.I.P. only.
- Manholes shown with 12" and 16" walls are for brick manholes only.
- Manholes designated W.T. in plan and profile shall have watertight frame and covers, Standard Detail, GS-52. Where watertight manhole frame and cover is used, set top of frame 1"-6" above finished grade unless otherwise noted on the drawings.
- House(s) with the symbol "C.N.S." indicates that cellar cannot be served.
- Manholes can be either brick or precast concrete structures.
- Contractor is solely responsible for construction means, methods, techniques, sequences, procedures, and safety precautions and programs.
- The fire hydrant shall be installed as per standard detail W.1.11.
- Fire hydrants will be located 3' FROM BACK OF CURB unless otherwise noted.
- For sprinkler systems, all townhomes or multi-family dwelling units should have a minimum of 1" connection with a 3/4" meter.
- The contractor shall notify the Bureau of Highways, Howard County, at (410) 313-7450 at least five (5) working days before any open cut of any County road or barrier/locking operation in County road for laying water/sewer mains or house connections. The approval of these drawings will constitute compliance with DMV requirements per Section 16.114(c) of the Howard County Code.

PROPOSED BUILDING
F.F. 226.0

QUANTITIES

ITEMS	QUANTITIES ESTIMATED	AS-BUILT		
		QUANTITIES	TYPE	MANUFACTURER / SUPPLIER
8" WATER	2112 LF	2125 LF	DIP	Atlantic States
6" WATER	293 LF	282 LF	DIP	Atlantic States
FIRE HYDRANTS	4 EA.	4 EA.	Cast Iron	Mueller Co.
6" VALVES	4 EA.	4 EA.	Cast Iron / Gate Valve	Mueller Co.
8" VALVES	3 EA.	3 EA.	Cast Iron / Gate Valve	Mueller Co.
AIR RELEASE MANHOLES	1 EA.	1 EA.	Precast Concrete	Atlantic Concrete
SEWER MANHOLES	1 EA.	1 EA.	Precast Concrete	Atlantic Concrete
8"-1/8 HB	12 EA.	12 EA.	DIP	Union Foundry
8"-1/8 VB	4 EA.	4 EA.	DIP	Union Foundry
8"-1/16 VB	2 EA.	2 EA.	DIP	Union Foundry
8"x8" T	4 EA.	4 EA.	DIP	Union Foundry
8"x8" T	1 EA.	1 EA.	DIP	Union Foundry

FROM:	TO:	DIST.
F.H. #1	M.L. 0+02	7'
6" Inlet Pvc	6" Valve	93'
F.H. #2	M.L. 0+36	103'
6" Valve	6" Valve	84'
F.H. #2	M.L. 0+58	100'
6" Valve	6" Valve	78'
F.H. #2	M.L. 0+02	102'
6" Valve	6" Valve	81'
M.L. 0+58	6" Valve	78'
F.H. #2	M.L. 0+02	60'
6" Valve	6" Valve	24'
Air Release MH	M.L. 0+58	147'
6" Valve	6" Valve	185'
6" Valve	6" Valve	92'
6" Valve	6" Valve	100'

NOTE: WATER AND SEWER CONSTRUCTION PLANS OF CONTRACT 14-3553-D, AS APPROVED AND SIGNED BY THE CHIEF OF THE DEVELOPMENT ENGINEERING DIVISION ON JULY 10, 1999, ARE VOID AND REPLACED BY THESE REVISED WATER AND SEWER CONSTRUCTION PLANS (CONTRACT 14-3553-D), AS APPROVED AND WHEN SIGNED ON 7/27/2007

Sediment control measures for this contract will be implemented in accordance with Section 219 of the Specifications and as shown on SDP-07-102.

Review for Howard Soil Conservation District and meets technical requirements.

Cheryl S. ... 7/25/07
NATURAL RESOURCES CONSERVATION SERVICE DATE

This plan is approved for soil erosion and sediment control by the Howard Soil Conservation District.

John R. ... 7/25/07
HOWARD SOIL CONSERVATION DISTRICT DATE

NAME OF UTILITY CONTRACTOR: Gaines & Co. Inc.

CHECKBOX

AS-BUILT DATE: 12-08-97

SURVEY AND DRAFTING DIVISION

DEPARTMENT OF PUBLIC WORKS
HOWARD COUNTY, MARYLAND

Michael A. ... 7-28-97
CHIEF, BUREAU OF UTILITIES R/M/S DATE

DEPARTMENT OF PLANNING & ZONING
HOWARD COUNTY, MARYLAND

... 7/27/07
CHIEF, DEVELOPMENT ENGINEERING DIVISION DATE

RIEMER MUEGGE & ASSOCIATES, INC.
ENGINEERING • ENVIRONMENTAL SERVICES • PLANNING • SURVEYING
8816 Centre Park Drive • Suite 200 • Columbia, MD 21046
410-997-8800 FAX: 410-997-9282
R000/980502 WSL.DWG

J. ...

JAYKANT D. PAREKH # 19148

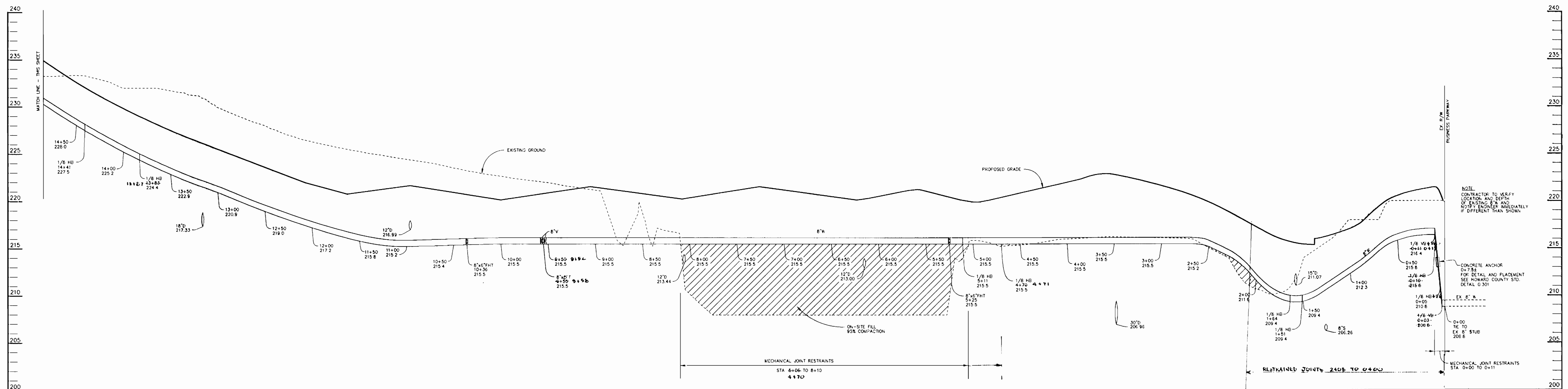
DES: CJR	BY NO.	REVISION	DATE
DRN: RPP			
CHK: JDP			
DATE: 7-21-97			

WATER AND SEWER PLAN

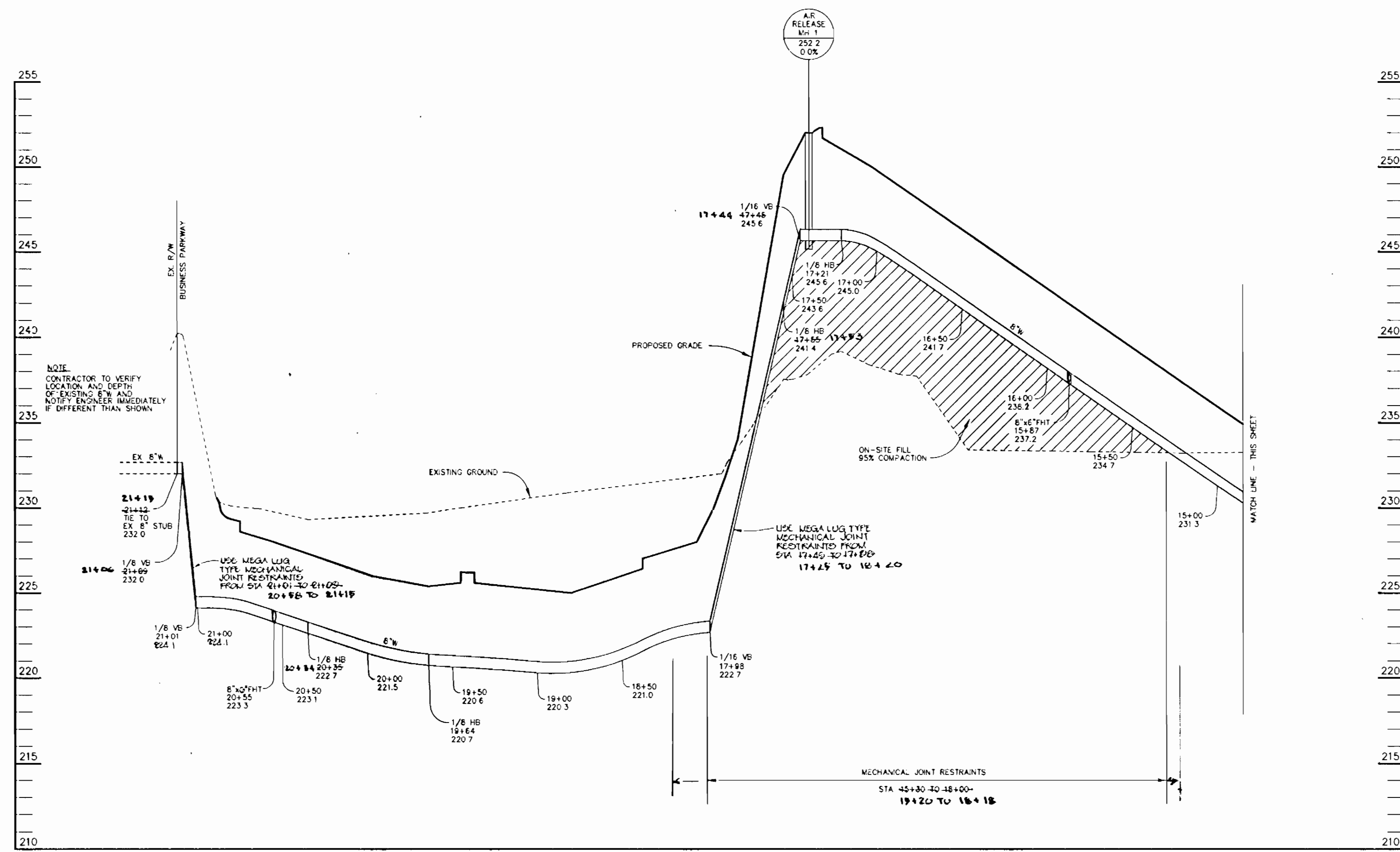
600' SCALE MAP NO. 37 BLOCK NO. 22

MEADOWRIDGE BUSINESS PARK
PARCEL J-2
1st ELECTION DISTRICT
HOWARD COUNTY, MARYLAND
CONTRACT 14-3553-D

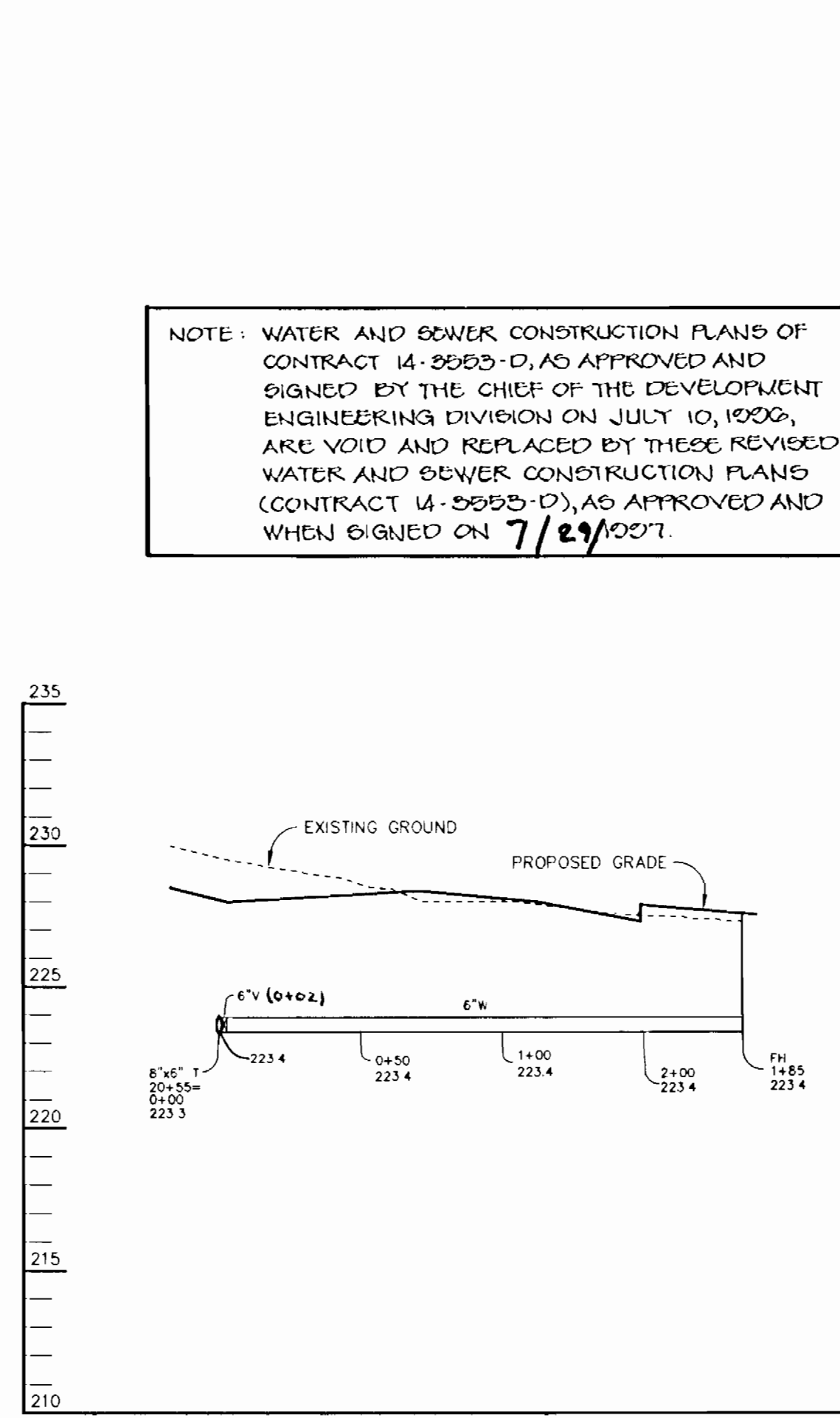
SCALE: 1"=50'
SHEET 1 OF 2



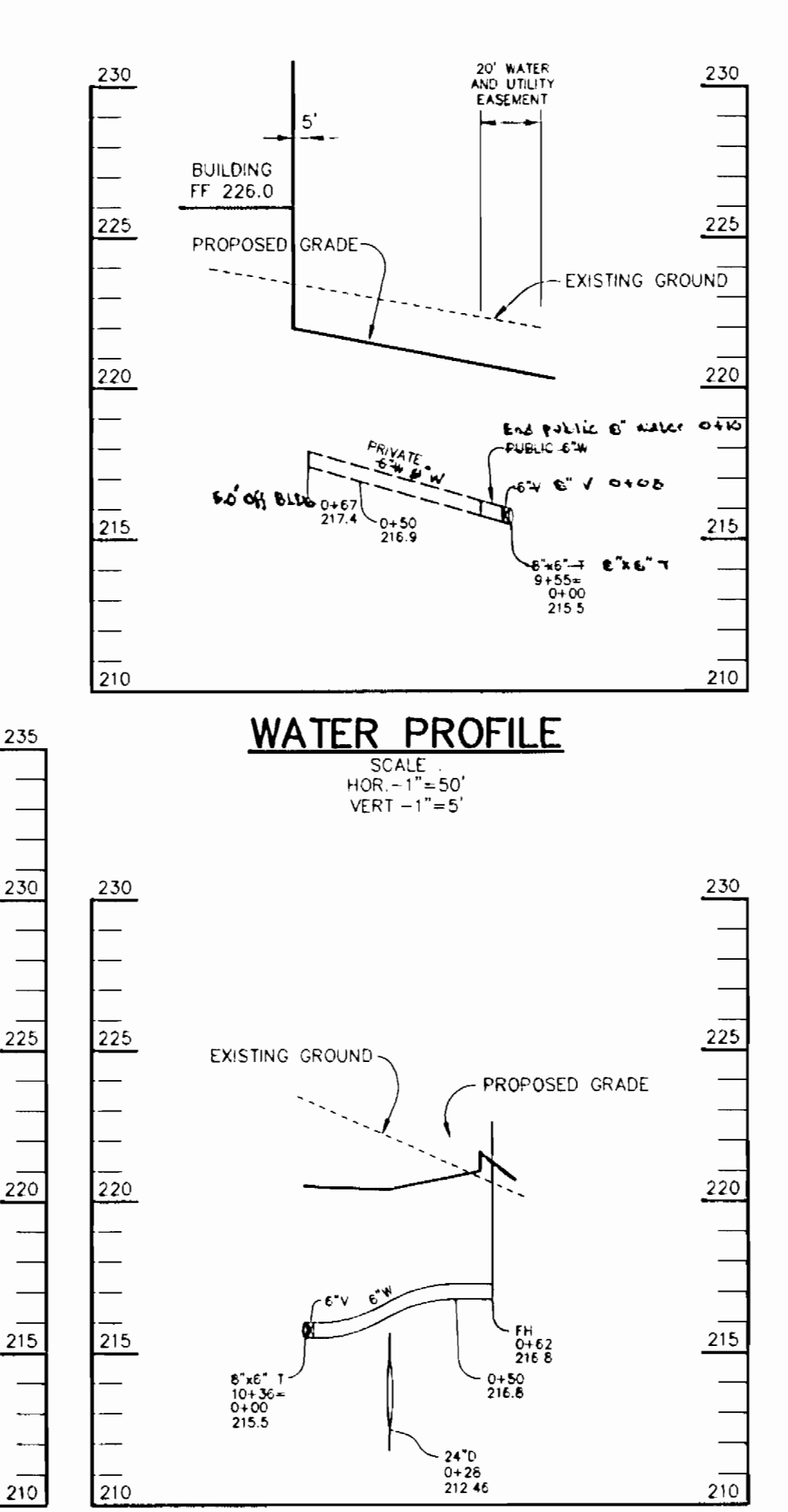
WATER PROFILE
 SCALE:
 HOR. - 1"=50'
 VERT. - 1"=5'



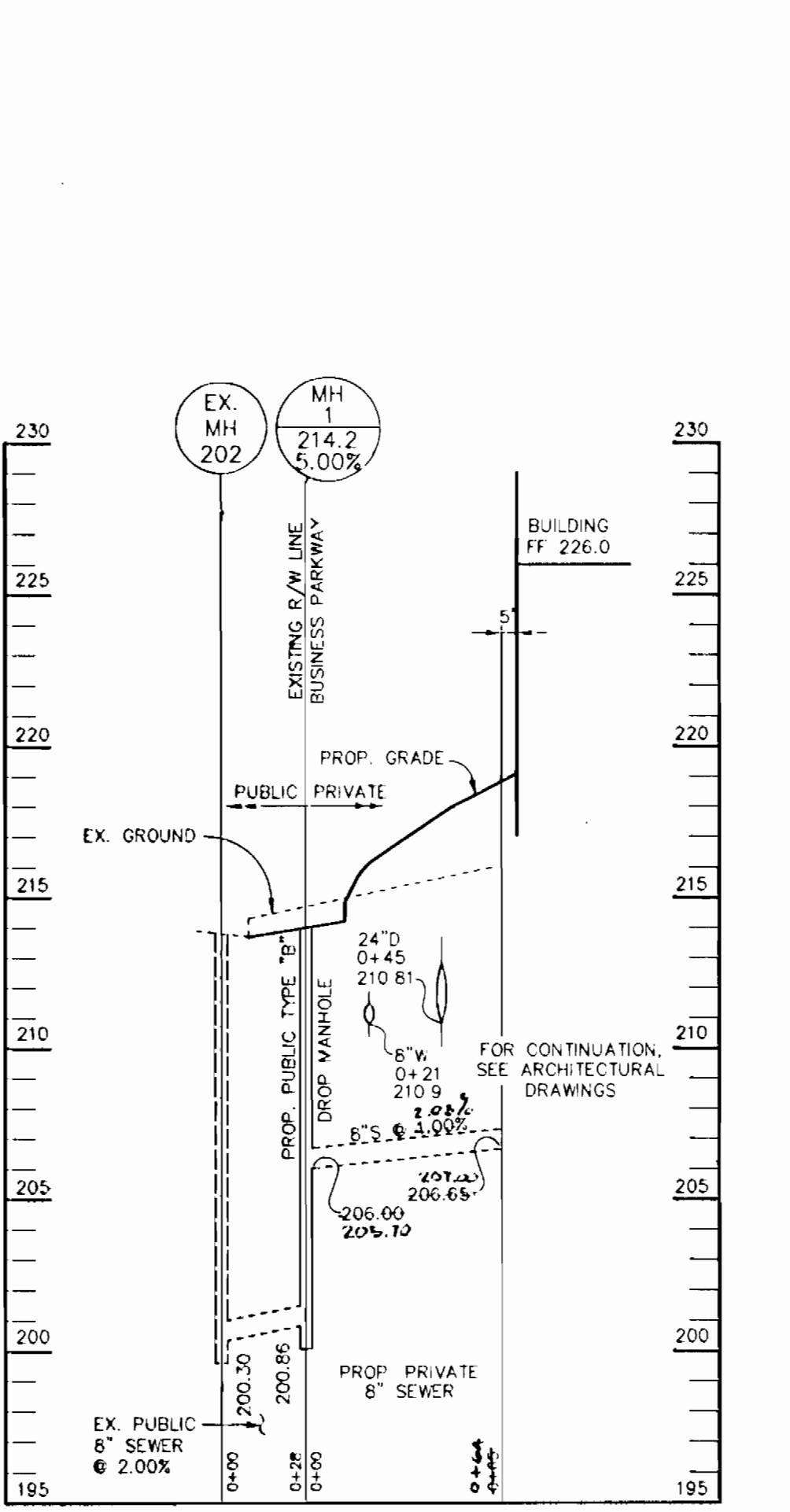
WATER PROFILE
 SCALE:
 HOR. - 1"=50'
 VERT. - 1"=5'



WATER PROFILE
 SCALE:
 HOR. - 1"=50'
 VERT. - 1"=5'



WATER PROFILE
 SCALE:
 HOR. - 1"=50'
 VERT. - 1"=5'



SEWER PROFILE
 SCALE:
 HOR. - 1"=50'
 VERT. - 1"=5'

DEPARTMENT OF PUBLIC WORKS HOWARD COUNTY, MARYLAND Michael Sturman, Jr. CHIEF, BUREAU OF UTILITIES	DEPARTMENT OF PLANNING & ZONING HOWARD COUNTY, MARYLAND [Signature] CHIEF, DEVELOPMENT ENGINEERING DIVISION	RIEMER MUEGGE & ASSOCIATES, INC. ENGINEERING • ENVIRONMENTAL SERVICES • PLANNING • SURVEYING 8818 Centre Park Drive • Suite 200 • Columbia, MD 21045 410-997-8800 FAX: 410-997-8282 [Signature] JAYKANT D. PAREKH # 19148	DES: CJR			WATER AND SEWER PROFILES	MEADOWRIDGE BUSINESS PARK PARCEL J-2 1st ELECTION DISTRICT HOWARD COUNTY, MARYLAND CONTRACT 14-3553-D	SCALE: AS SHOWN
			DRN: RPP	CHK: JDP	DATE: 7-21-07			BY: NO. REVISION DATE