

WATER AND SEWER EXTENSIONS

CLARKS GLEN, SECTION 3

5th ELECTION DISTRICT

HOWARD COUNTY, MARYLAND

CONTRACT NO. 34-3552-D

GENERAL NOTES

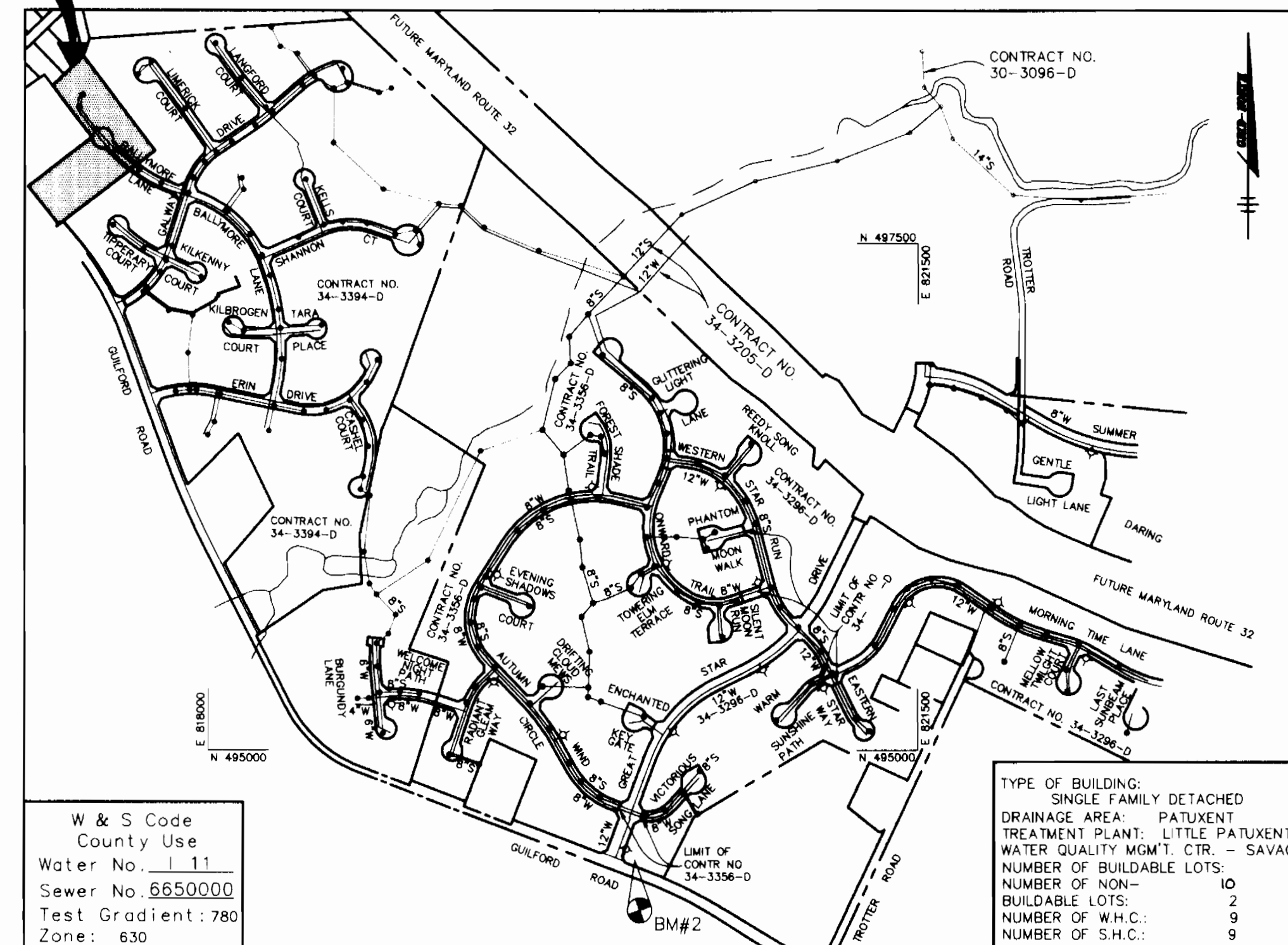
1. Approximate location of existing mains are shown. The contractor shall take all necessary precautions to protect existing mains and services and maintain uninterrupted supply. Any damage incurred shall be repaired immediately to the satisfaction of the Engineer at the Contractor's expense.
2. All horizontal controls are based on Maryland State Coordinates.
3. All vertical controls are based on U.S.C.S. data.
4. All pipe elevations shown \curvearrowright are invert elevations.
5. Clear all utilities by a minimum of 6". Clear all poles by 2'-0" minimum or tunnel as required. The owner has contacted the utility companies and has made arrangements for bracing of poles as shown on the drawings. In the event the contractor's work requires the bracing of additional poles, any cost incurred by the owner for bracing of additional poles or damages shall be deducted from money owed the contractor. The contractor shall coordinate with the utility companies to schedule the bracing of the poles.
6. For details not shown on the drawings, and for materials and construction methods use Howard County Design Manual, Volume IV, Standard Specifications and Detail for Construction. (Latest Edition). The contractor shall have a copy of Volume IV on the job.
7. Where test pits have been made on existing utilities, they are noted by the symbol \square at the location of the test pit. A note or notes containing the results of the test pit or pits is included on the drawings. Existing utilities in the vicinity of the proposed work for which test pits have not been dug shall be located by the contractor two weeks in advance of construction operations at his own expense.
8. Contractor shall notify the following utility companies or agencies at least five working days before starting work shown on these plans:

State Highway Administration	531-5533
Baltimore Gas & Electric Co. Contractor Services	850-4620
Baltimore Gas & Electric Co. Underground Damage Control	787-9068
Miss Utility	1-800-257-7777
Colonial Pipeline Co.	795-1390
Bureau of Utilities, Howard County Department of Public Works	313-4900
9. Trees and shrubs are to be protected from damage to maximum extent. Trees and shrubs located within the construction strip are not to be removed or damaged by the contractor.
10. Contractor shall remove trees, stumps and roots along line of excavation. Payment for such removal shall be included in the unit price bid for construction of the main.
11. All water mains to be D.I.P. Class 52 unless otherwise noted.
12. Tops of all water mains to have a minimum of 3'-1/2" cover unless otherwise noted.
13. Valves adjacent to tees shall be strapped to tees.
14. All fittings shall be buttressed or anchored with concrete in accordance with the Standard Details unless otherwise provided for on the drawings.
15. Fire hydrants shall be set to the bury line elevations shown on the drawings. All fire hydrants shall be restrained and buttressed with concrete in accordance with Standard Details. Soil around the fire hydrant shall be compacted in accordance with Section 1000 and 1005 of the Standard Specifications.
16. The contractor shall not operate any water main valves on the existing water system.
17. All water house connections shall be for inside meter setting unless otherwise noted on plans or in specifications.
18. All sewer mains shall be D.I.P. and P.V.C. unless otherwise noted.
19. All manholes shall be 4'-0" inside diameter unless otherwise noted.
20. Force mains shall be D.I.P. only.
21. Manholes shown with 12" and 16" walls are for brick manholes only.
22. Manholes designated W.T. in plan and profile shall have watertight frame and covers, Standard Detail G5.52. Where watertight manhole frame and cover is used, set top of frame 1'-6" above finished grade unless otherwise noted on the drawings.
23. House(s) with the symbol "C.N.S." indicates that cellar cannot be served.
24. Manholes can be either brick or precast concrete structures.
25. Contractor is solely responsible for construction means, methods, techniques, sequences, procedures, and safety precautions and programs.
26. The fire hydrant shall be installed as per standard detail W.1.11.
27. Fire hydrants will be located 3' FROM BACK OF CURB unless otherwise noted.
28. For sprinkler system for all townhomes or multi-family dwelling units should have a minimum of 1" connection with a 3/4" meter.
29. The contractor shall notify the Bureau of Highways, Howard County, at (410) 313-2450 at least five (5) working days before any open cut of any County road or boring/lacking operation in County roads for laying water/sewer mains or house connections. The approval of these drawings will constitute compliance with DPA requirements per Section 18.114(a) of the Howard County Code.

QUANTITIES

ITEMS	QUANTITIES ESTIMATED	AS-BUILT		MANUFACTURER / SUPPLIER
		QUANTITIES	TYPE	
6" CAP & BUTTRESS	1 EA.	1 EA.	DIP MJ	Union Foundry Water Pro
8"X6" REDUCER	1 EA.	1 EA.	DIP	Union Foundry Water Pro
8"X6" TEE H.V.D.	1 EA.	1 EA.	DIP	Union Foundry Water Pro
6" 1/8 HB	1 EA.	1 EA.	DIP	Union Foundry Water Pro
6" VALVE	1 EA.	1 EA.	REG Wedge Gate Valve	Mueller Co. Water Pro
8" WATER	168 LF	168 LF	DIP Cl. 52	Atlantic States A.I. Pipe
6" WATER	331 LF	329 LF	DIP Cl. 52	Atlantic States A.I. Pipe
3/4" MHC	227 LF	245 LF	Type K	Reading Tube Water Pro
4" SHC	200 LF	259 LF	PVC SDR 35	J.M. Mfg. Water Pro
8" SEWER	472 LF	472 LF	PVC SDR 35	J.M. Mfg. Water Pro
FIRE HYDRANTS	1 EA.	1 EA.	Cast Iron	Mueller Co. Water Pro
SEWER MANHOLES	4 EA.	4 EA.	Precast concrete	Atlantic concrete
VERT. FEET SMH	16 LF			
1-1/2" DRAIN	1 EA.	1 EA.	H10483	Mueller Co. Water Pro

SITE



VICINITY MAP
SCALE : 1"=600'

BENCHMARKS

BM1
HOWARD COUNTY MONUMENT NO.: 2637003
ELEV. 481.25
CONCRETE MONUMENT

BM2
HOWARD COUNTY MONUMENT NO.: 2437003
ELEV. 472.12
CONCRETE MONUMENT

NAME OF UTILITY CONTRACTOR : GAINES & Co. Inc.

Sediment control measures for this contract will be implemented in accordance with Section 219 of the Specifications and as shown on P-07-92

Review for Howard Soil Conservation District and meets technical requirements.

This plan is approved for soil erosion and sediment control by the Howard Soil Conservation District.

DEPARTMENT OF PUBLIC WORKS
HOWARD COUNTY, MARYLAND

DEPARTMENT OF PLANNING & ZONING
HOWARD COUNTY, MARYLAND

RIEMER MUEGGE & ASSOCIATES, INC.
Planners • Engineers • Surveyors
8818 Centre Park Drive • Suite 200 • Columbia, MD 21046
410-997-8900 FAX : 410-997-9282
RMC/THOMPSON WSHR1.DWG

J. Arekh
JAYKANT D. PAREKH # 19146

DES: MMM
DRN: MMM
CHK: CJR
DATE: 4/23/97

5/13/97
5/13/97

5/10/97

Water & Sewer As-Builts

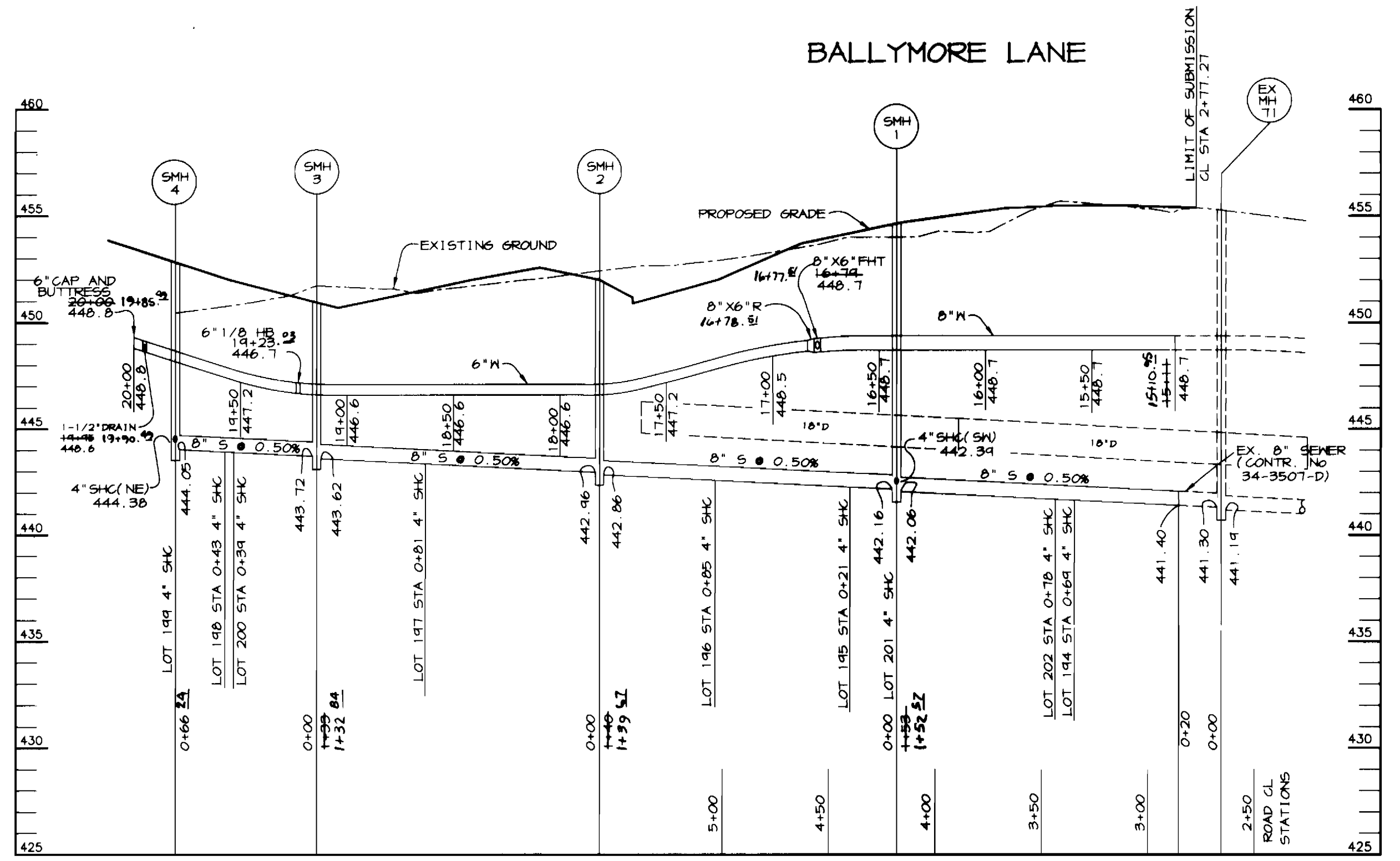
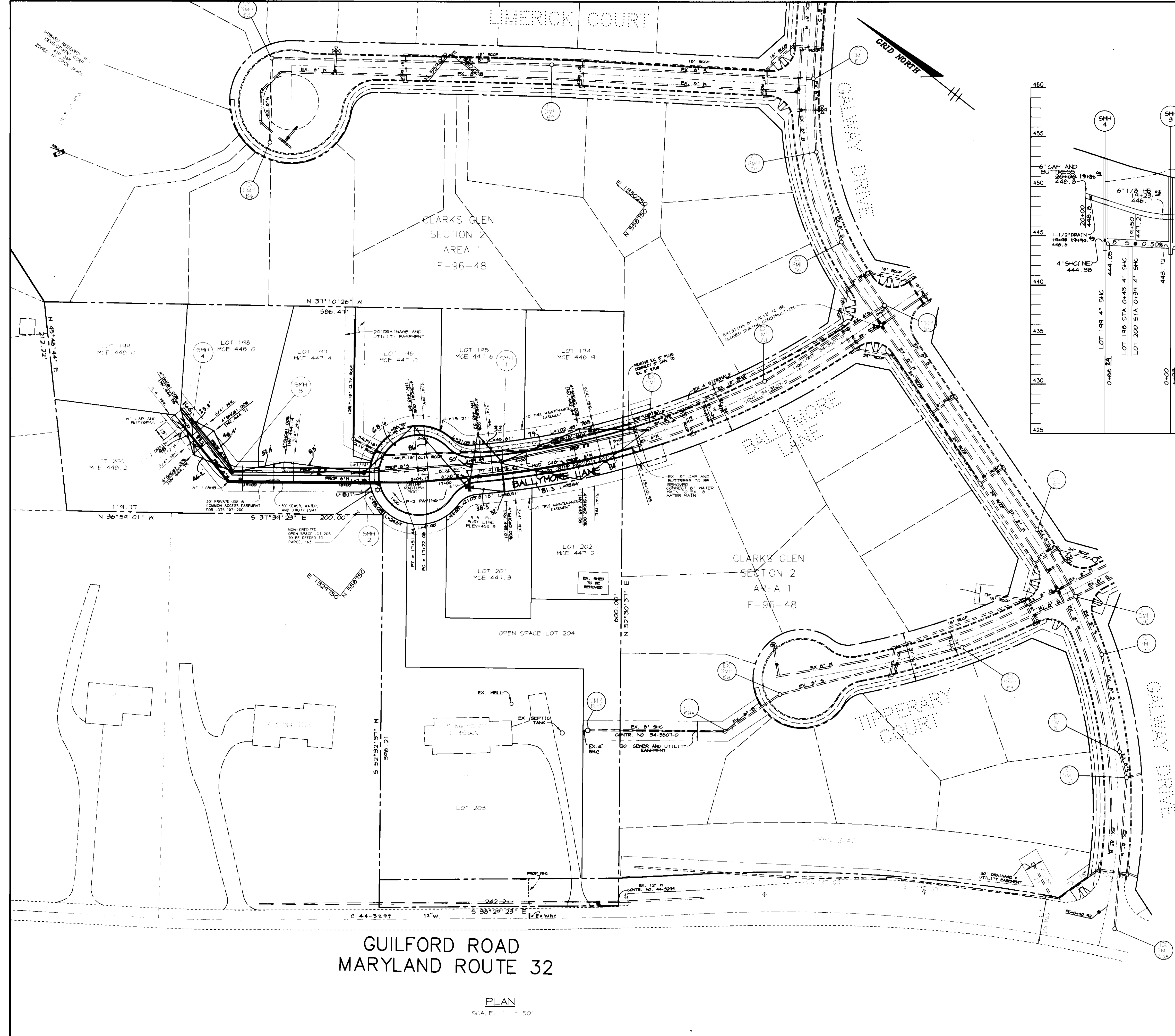
TITLE SHEET

CLARKS GLEN, SECTION 3
LOTS 194 - 205
FORMERLY THOMPSON PROPERTY
5TH ELECTION DISTRICT
HOWARD COUNTY, MARYLAND
CONTRACT 34-3552-D

SCALE AS SHOWN

SHEET 1 OF 2

600' SCALE MAP NO. 35 BLOCK NO. 13



PROFILE
SCALE:
HOR. = 1" = 50'
VERT. = 1" = 5'

STRUCTURE SCHEDULE					
STRUCT. NO.	TYPE	LOCATION	TOP ELEV.	SLOPE %	REMARKS
SMH-1	4'-0" DIA. MANHOLE	S 1/4 CT. CL STA 4+19	454.34	2.00	H. CO. DETAIL 6-5-12
SMH-2	4'-0" DIA. MANHOLE	N 550, 807.96 E 1, 329, 869.07	452.00	0.00	H. CO. DETAIL 6-5-12
SMH-3	4'-0" DIA. MANHOLE	N 550, 913.09 E 1, 329, 191.78	450.80	1.00	H. CO. DETAIL 6-5-12
SMH-4	4'-0" DIA. MANHOLE	N 550, 977.60 E 1, 329, 736.55	453.30	4.00	H. CO. DETAIL 6-5-12

Water As-Builts

Lot	From	To	Size	Depth
195	SMH 71	SMH 1	8"	48"
196	SMH 71	SMH 2	8"	48"
197	SMH 71	SMH 3	8"	48"
198	SMH 71	SMH 4	8"	48"
199	SMH 71	SMH 1	8"	48"
200	SMH 71	SMH 2	8"	48"
201	SMH 71	SMH 3	8"	48"
202	SMH 71	SMH 4	8"	48"

GUILFORD ROAD
MARYLAND ROUTE 32

PLAN
SCALE: 1" = 50'

DEPARTMENT OF PUBLIC WORKS
HOWARD COUNTY, MARYLAND

Michael A. ...
CHIEF, BUREAU OF UTILITIES

DEPARTMENT OF PLANNING & ZONING
HOWARD COUNTY, MARYLAND

...
CHIEF, DEVELOPMENT ENGINEERING DIVISION

RIEMER MUEGGE & ASSOCIATES, INC.
Planners • Engineers • Surveyors
8818 Centre Park Drive • Suite 200 • Columbia, MD 21045
410-997-8900 FAX: 410-997-9282
R000/THOMPSON WBSR7E.DWG

J. Parekh
JAYKANT D. PAREKH # 19148

DES: MMM
DRN: MMM
CHK: GJR
DATE: 4/23/97

WATER AND SEWER PLAN

600' SCALE MAP NO. 34 BLOCK NO. 13

Sewer As-Builts

CLARKS GLEN, SECTION 3
LOTS 194 - 205
FORMERLY THOMPSON PROPERTY
5TH ELECTION DISTRICT
HOWARD COUNTY, MARYLAND
CONTRACT 34-3552-D

SCALE AS SHOWN
SHEET 2 OF 2